

V&V Reference Report

L2 ASCDS Version : 8.4.3.1

Observation 6848 - L2 Version 3
Chandra X-Ray Center

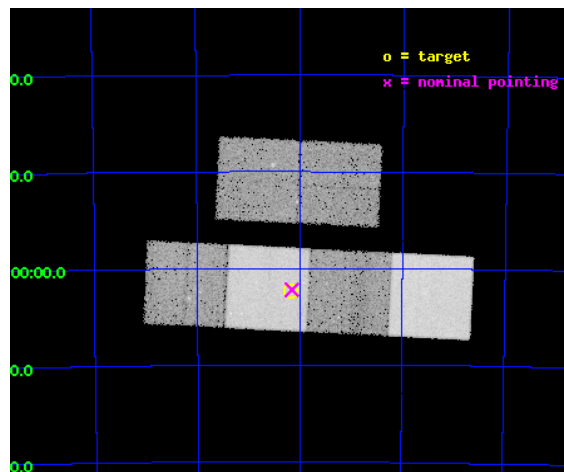
L2 Processing Date : Apr 16 2012

Contents

1	Front	2
2	OBI	3
2.1	OBI	3
2.1.1	Images	3
2.1.2	Bias	3
2.1.3	Parameters	4
2.1.4	Events	4
2.2	Compared Parameters	5
2.3	Aspect	6
2.4	Star Slots	9
2.4.1	Slot 3	9
2.4.2	Slot 4	10
2.4.3	Slot 5	11
2.4.4	Slot 6	12
2.4.5	Slot 7	13
2.5	FID Slots	14
2.5.1	Slot 0	14
2.5.2	Slot 1	15
2.5.3	Slot 2	16
A	Summary	17
A.1	Status	17
A.2	Comments	17

1 Front

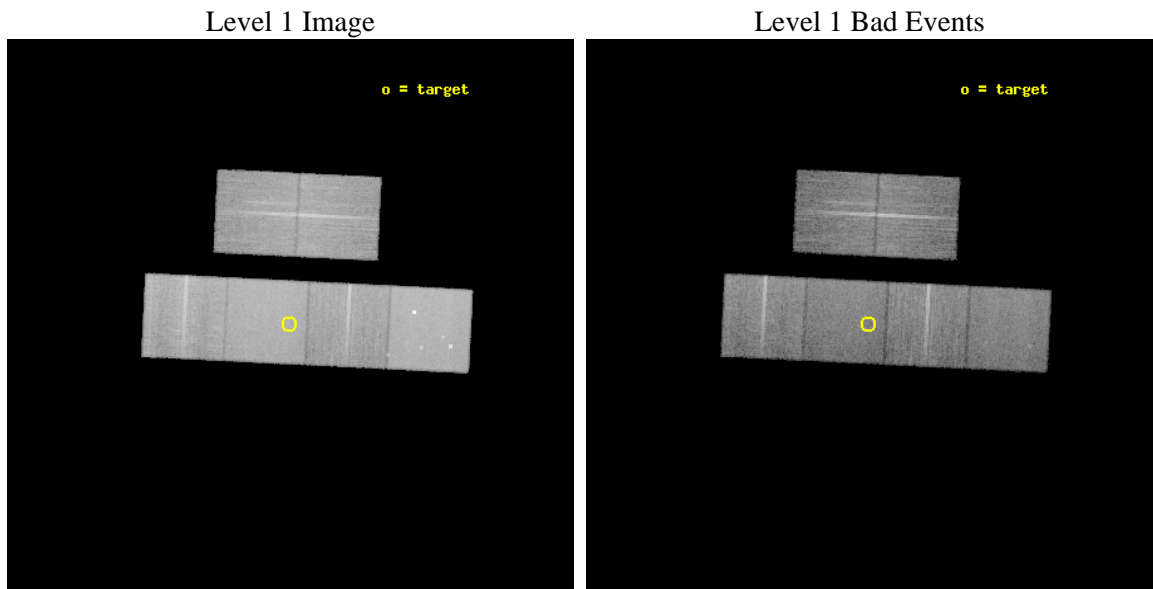
seq_num	701266	Sequence number
obs_id	6848	Observation id
title	Unveiling obscured AGNs in close pairs of similar sized galaxies	P
observer	Dr. Nora Loiseau	Principal investigator
object	AM 2049-691	Source name
dtcycle	0	
cycle	P	events from which exps? Prim/Second/Both
ra_targ	313.542083	Observer's specified target RA [deg]
dec_targ	-69.038611	Observer's specified target Dec [deg]
ra_nom	313.53838730836	Nominal RA [deg]
dec_nom	-69.036997758825	Nominal Dec [deg]
roll_nom	182.83088551485	Nominal Roll [deg]
revision	3	Processing version of data
ontime	19142.399928689	Sum of GTIs [s]
livetime	18900.007334623	Livetime [s]
ontime2	19139.158958375	Sum of GTIs [s]
ontime3	19142.399928689	Sum of GTIs [s]
ontime5	19142.399928689	Sum of GTIs [s]
ontime6	19139.158938468	Sum of GTIs [s]
ontime7	19142.399928689	Sum of GTIs [s]
ontime8	19142.399928689	Sum of GTIs [s]
l2events	261010	Number of level 2 events



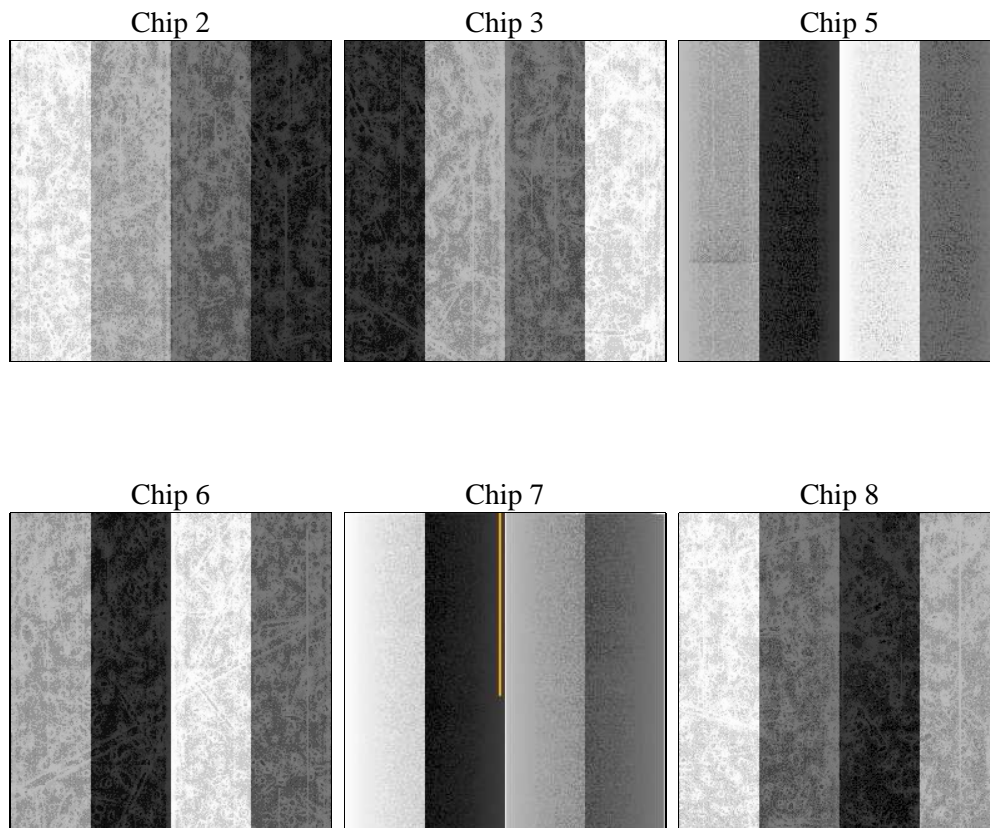
2 OBI

2.1 OBI

2.1.1 Images



2.1.2 Bias



2.1.3 Parameters

obi_num	0	Obi number	sched_exp_time	19000.000000	[s] Scheduled observation exposure time
ascdsver	8.4.3.1	Processing system revision	ontime	19142.399928689	Sum of GTIs [s]
caldbver	4.4.9	 	ontime2	19139.158958375	Sum of GTIs [s]
date	2012-04-16T15:37:33	Date and time of file creation	ontime3	19142.399928689	Sum of GTIs [s]
revision	3	Processing version of data	ontime5	19142.399928689	Sum of GTIs [s]
			ontime6	19139.158938468	Sum of GTIs [s]
			ontime7	19142.399928689	Sum of GTIs [s]
			ontime8	19142.399928689	Sum of GTIs [s]
			l1events	1162010	Number of level 1 events

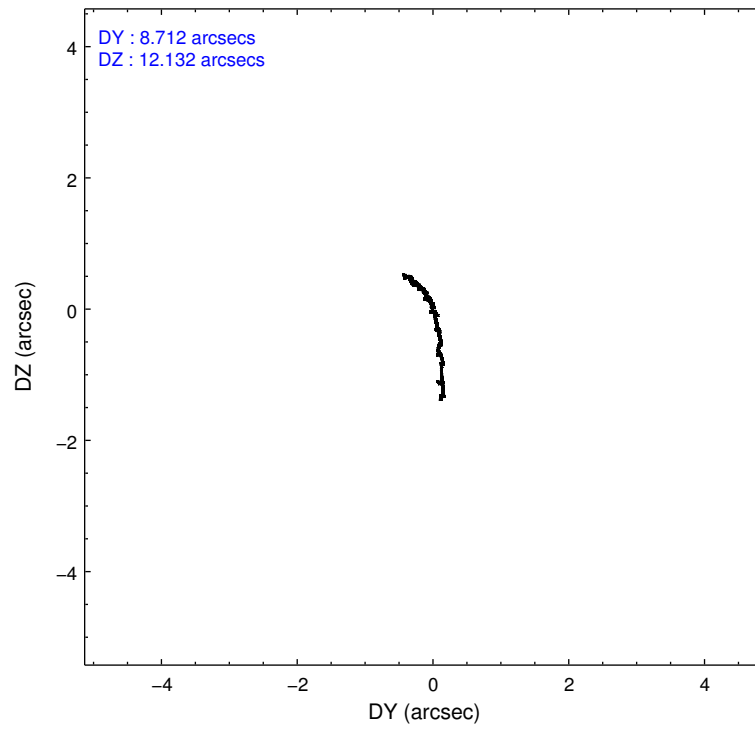
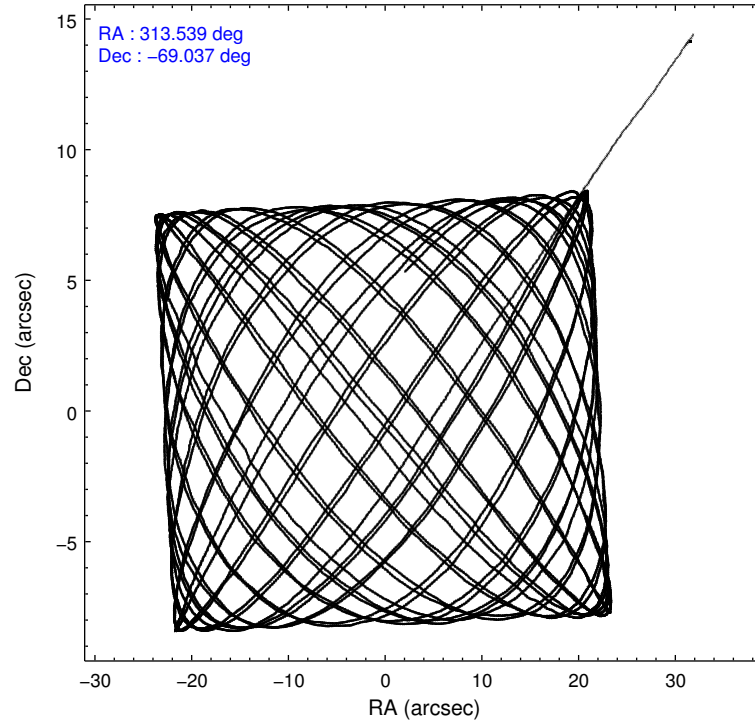
2.1.4 Events

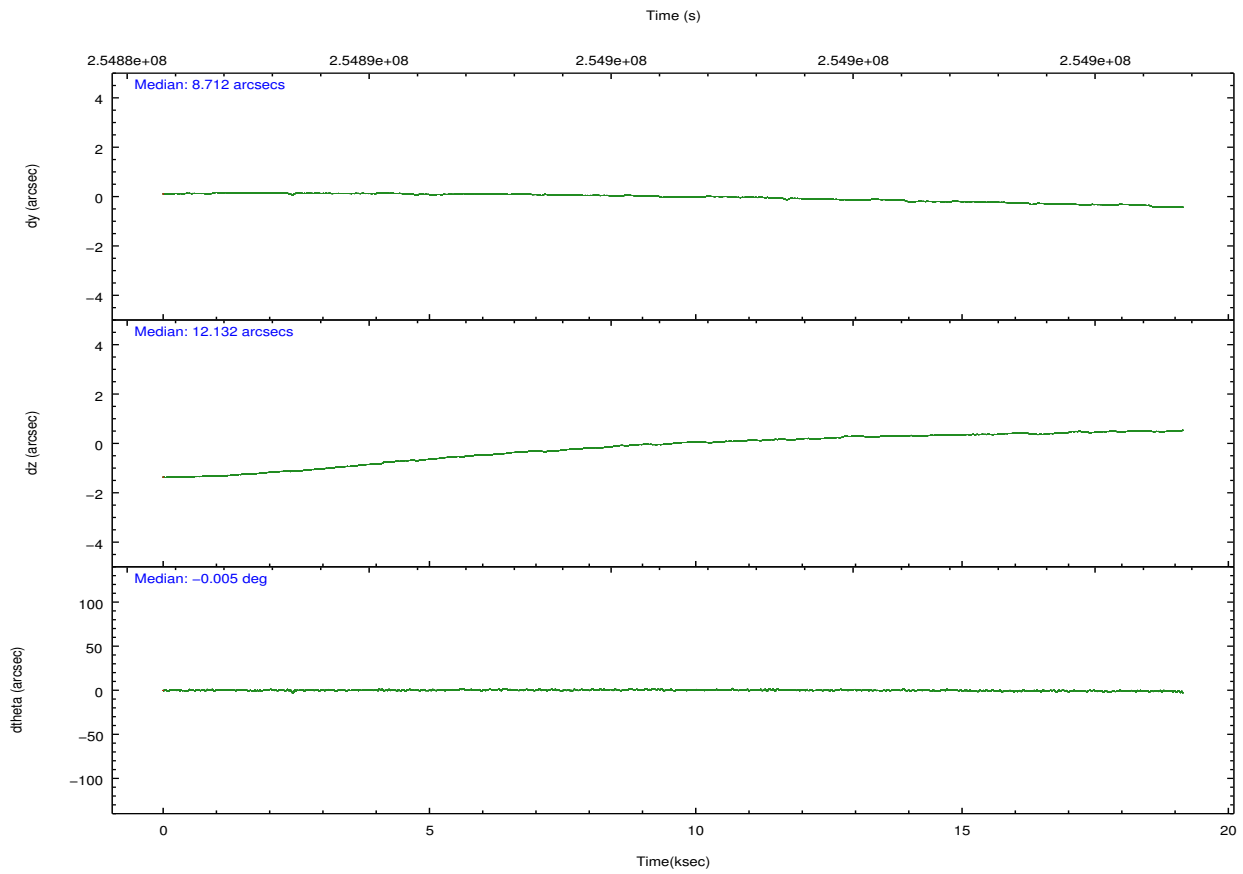
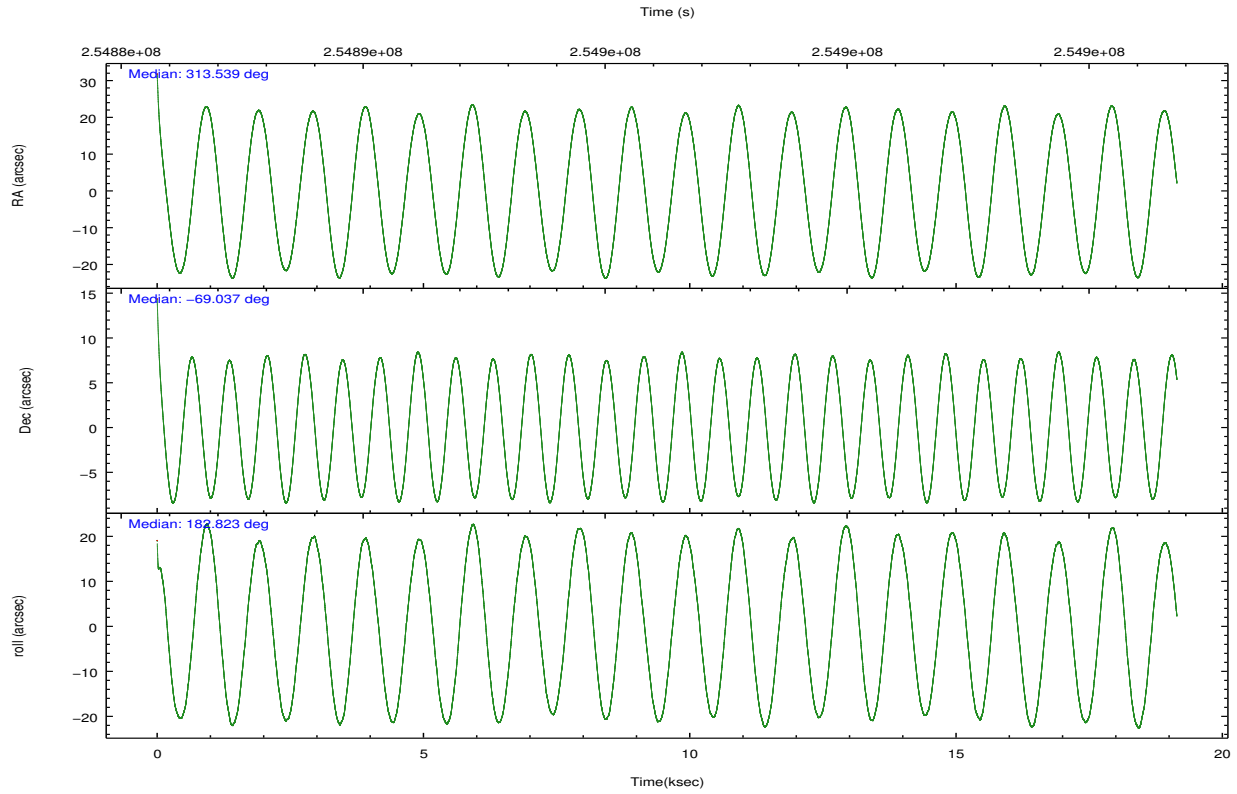
	ccd 2	ccd 3	ccd 5	ccd 6	ccd 7	ccd 8		ccd 2	ccd 3	ccd 5	ccd 6	ccd 7	ccd 8
level 1 events	166364	152813	248920	165611	222364	205938	grade 0 events	8744	8565	14447	7689	8348	14355
rejected events	147062	134110	135573	146506	131889	160866		5%	5%	5%	4%	3%	6%
rejected %	88%	87%	54%	88%	59%	78%	grade 1 events	95	100	531	92	228	127
								0%	0%	0%	0%	0%	0%
							grade 2 events	4125	3635	33471	4131	18614	10619
								2%	2%	13%	2%	8%	5%
							grade 3 events	1766	1840	4238	1910	7998	4580
								1%	1%	1%	1%	3%	2%
							grade 4 events	1847	1773	4177	1841	7856	4279
								1%	1%	1%	1%	3%	2%
							grade 5 events	6408	7306	17733	7490	20818	10033
								3%	4%	7%	4%	9%	4%
							grade 6 events	3245	3317	59510	3929	49710	12318
								1%	2%	23%	2%	22%	5%
							grade 7 events	140134	126277	114813	138529	108792	149627
								84%	82%	46%	83%	48%	72%

2.2 Compared Parameters

Parameter	Planned	Actual	Parameter	Planned	Actual
Instrument	ACIS	ACIS	Obspar format version number	7	7
Detector	ACIS-235678	ACIS-235678	Obspar file type	PREDICTED	ACTUAL
Grating	NONE	NONE	Obspar update status	NONE	UPDATED
Data mode	FAINT	FAINT	Number of optional ACIS chips dropped	0	0
Observation mode	POINTING	POINTING	On-chip summing requested	N	N
[deg] Pointing RA	313.601729	313.5383873083613	Subarray requested	NONE	NONE
[deg] Pointing Dec	-69.021928	-69.03699775882541	Alternating exposures requested	N	N
[deg] Pointing Roll	182.733414	182.8308855148487	[s] Primary exposure time	0.000000	3.2
[mm] SIM focus pos	-0.684267	-0.6828225247311905			
[mm] SIM defocus	0	0.001444936568705701			
[mm] SIM translation stage pos	-190.132523	-190.1425803651734			
[mm] SIM translation stage offset	0	0.01005778216563158			
[s] Observation start time (MET)	254886853.184000	254885588.52834			
Observation start date	2006-01-29T01:53:08	2006-01-29T01:33:08			
[s] Observation end time (MET)	254905853.184000	254906634.85431			
Observation end date	2006-01-29T07:09:48	2006-01-29T07:23:54			
Read mode	TIMED	TIMED			

2.3 Aspect



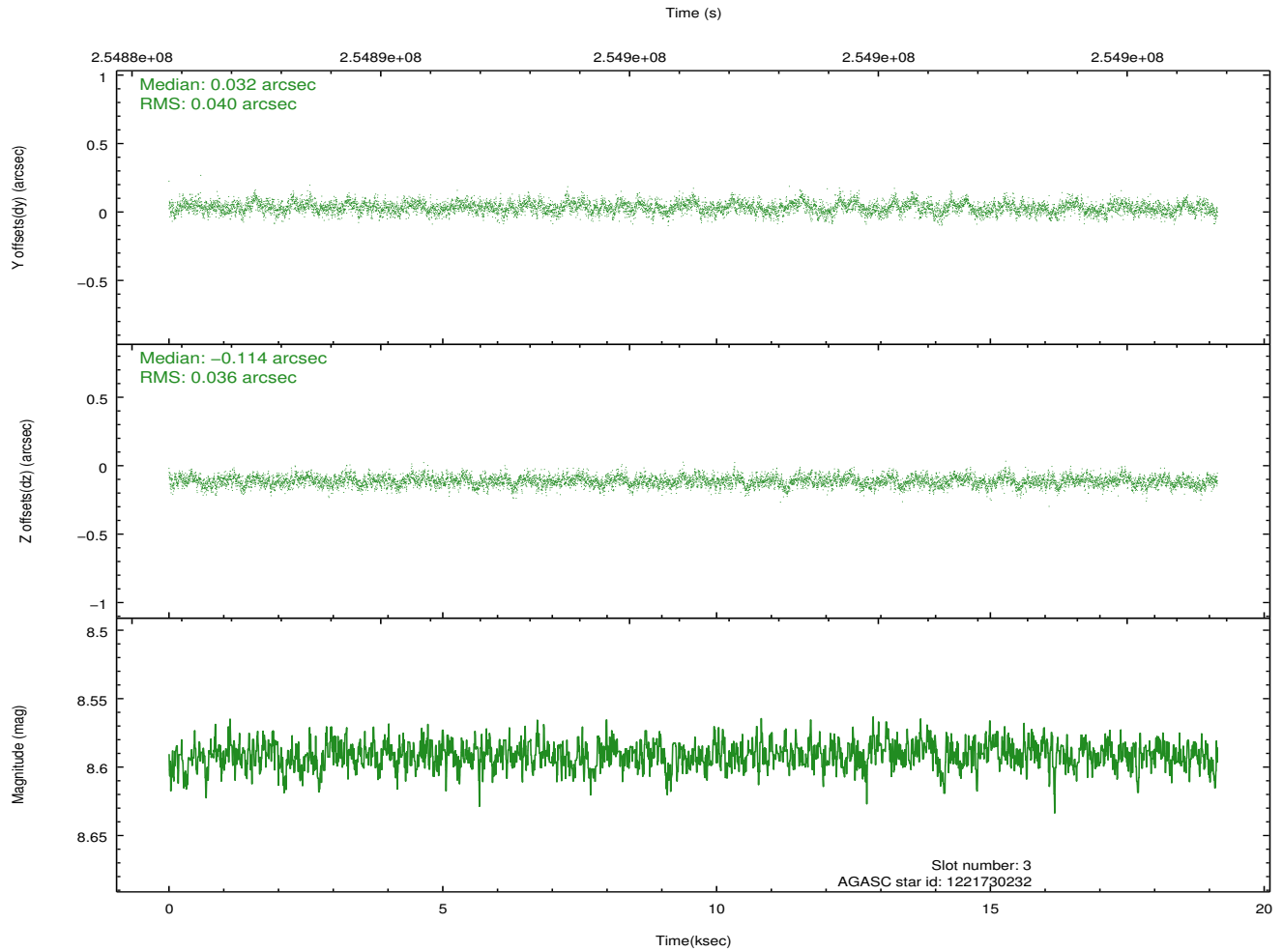
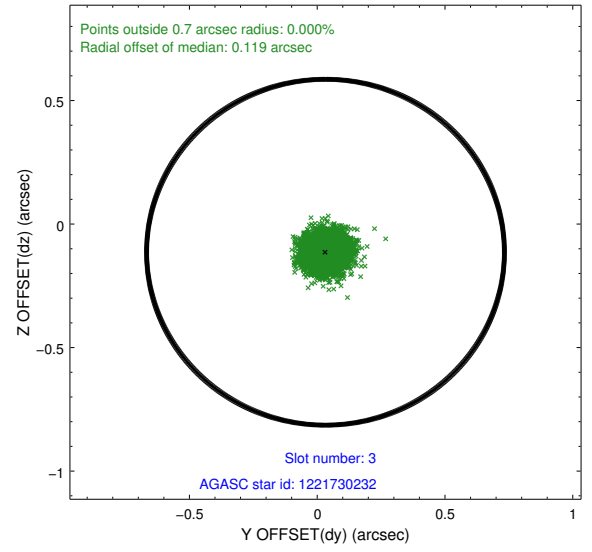
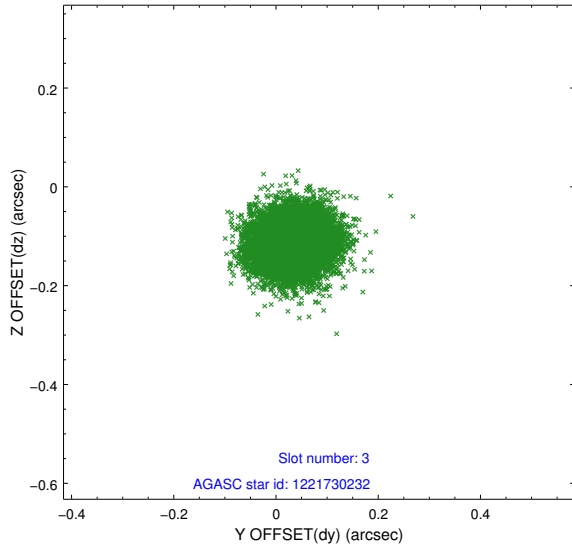


Slot Statistics

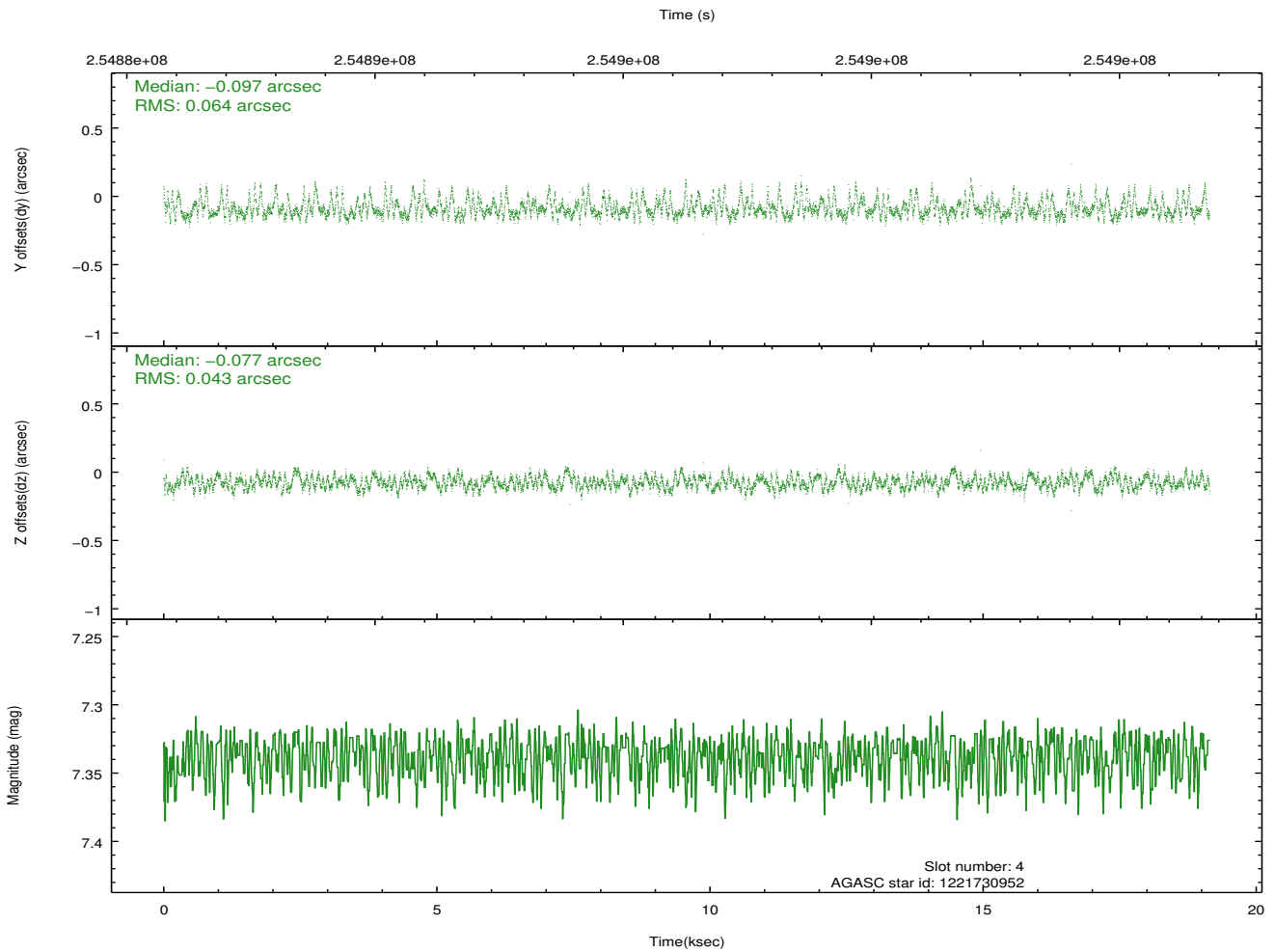
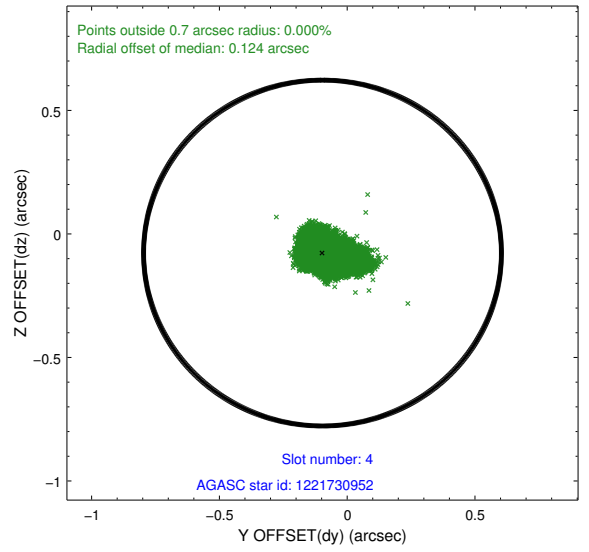
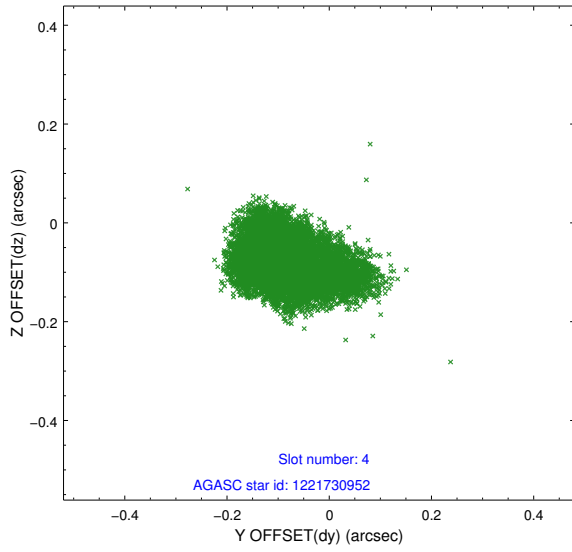
slot	status	id	mag	n_pts	med_dy	med_dz	dr1	dr2	ra	dec	mean_y	mean_z
0	FID	ACIS-S-1	7.19	4671	-0.018	-0.070	0.017	0.025	0.000000	0.000000	934.53	-1728.89
1	FID	ACIS-S-4	7.20	4671	0.049	0.024	0.017	0.024	0.000000	0.000000	2152.13	175.15
2	FID	ACIS-S-6	7.35	4669	-0.052	0.056	0.012	0.018	0.000000	0.000000	400.72	812.78
3	GUIDE	1221730232	8.59	9335	0.032	-0.114	0.057	0.095	315.179934	-69.116380	-2005.08	462.44
4	GUIDE	1221730952	7.34	9340	-0.097	-0.077	0.078	0.142	314.548663	-69.146222	-1190.50	514.78
5	GUIDE	1222256776	9.15	9286	0.142	0.033	0.100	0.161	315.287736	-69.569628	-2020.76	2100.08
6	GUIDE	1221726944	7.33	9336	-0.033	0.120	0.071	0.115	312.235507	-68.791258	1738.42	-892.97
7	GUIDE	1221733240	7.41	9339	-0.057	0.039	0.057	0.089	314.444783	-68.424744	-1216.54	-2086.04

2.4 Star Slots

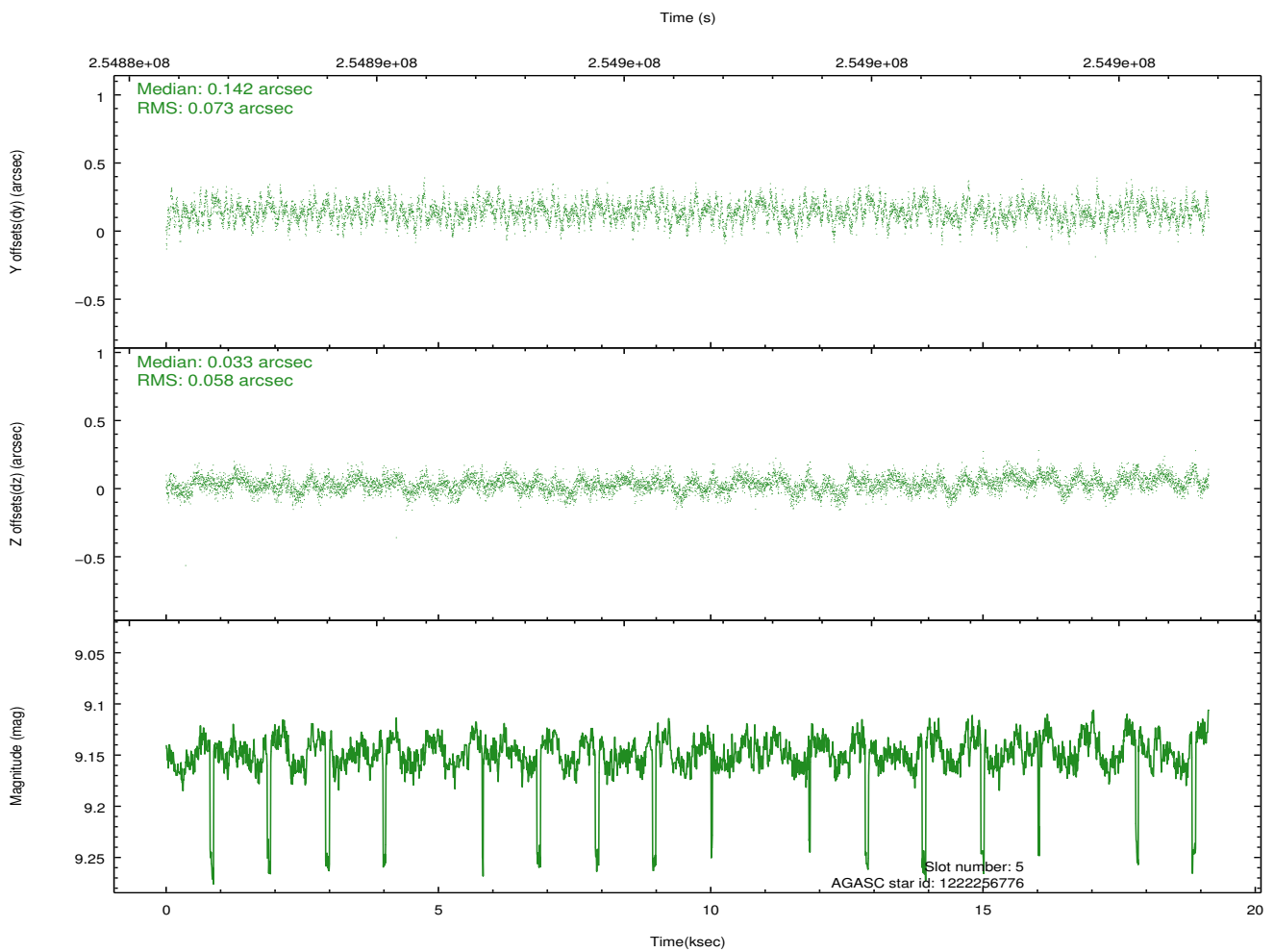
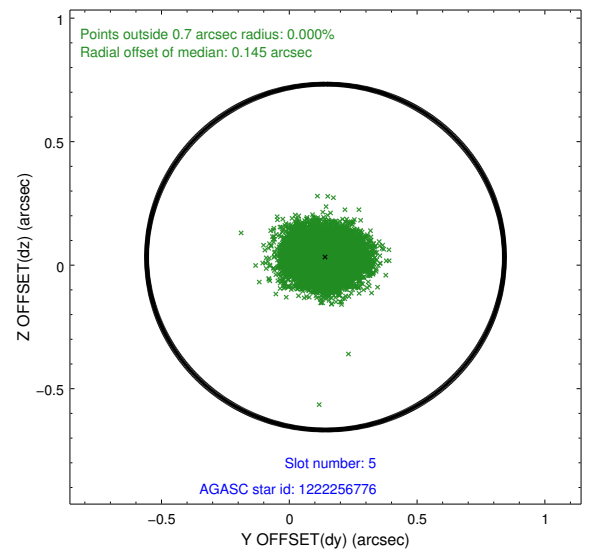
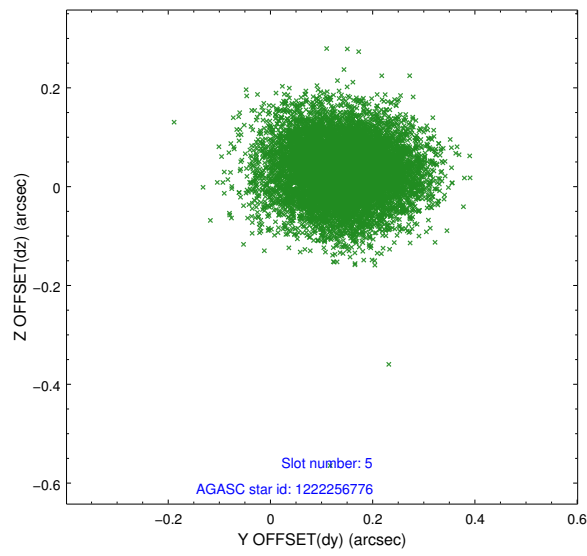
2.4.1 Slot 3



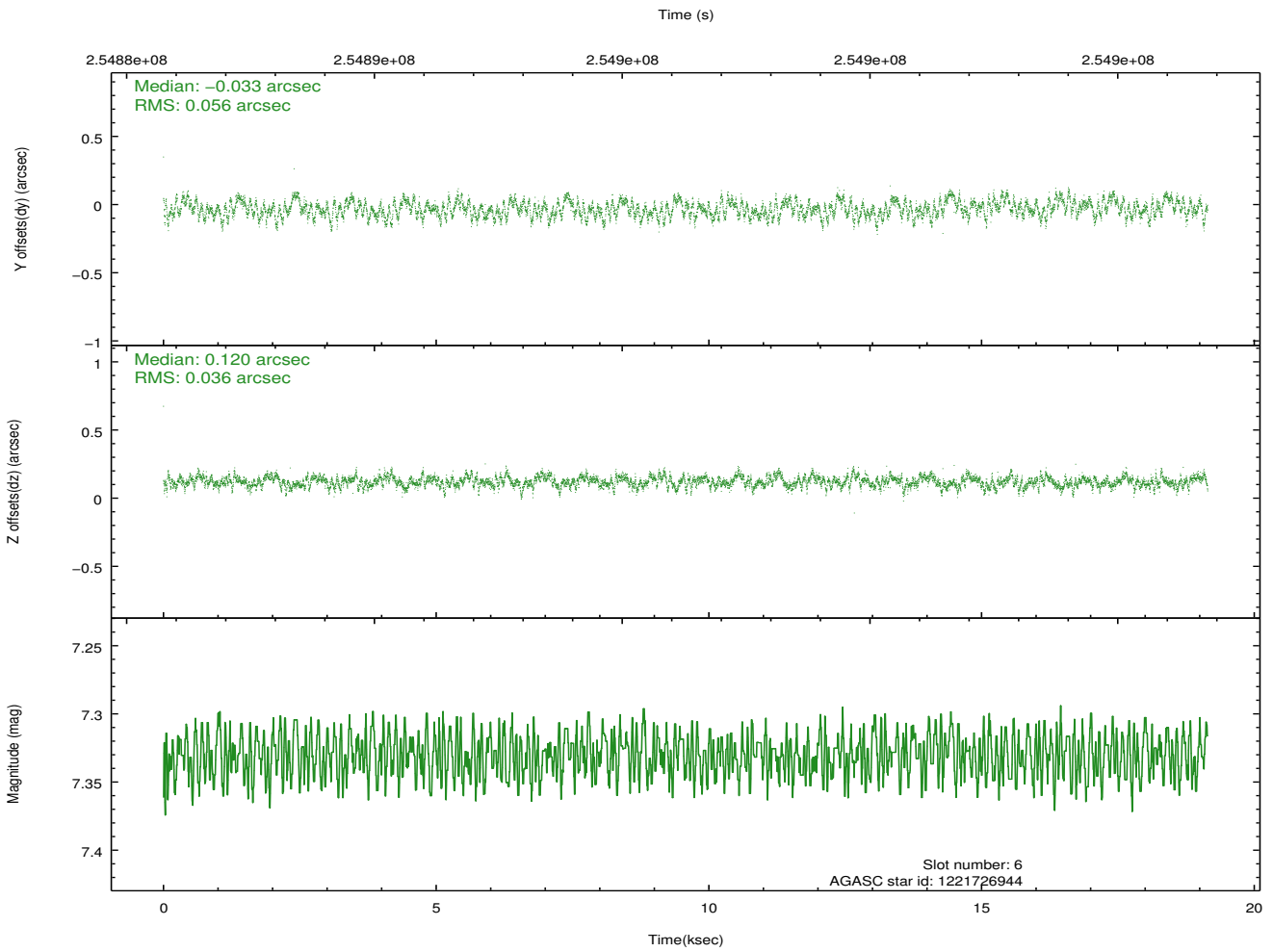
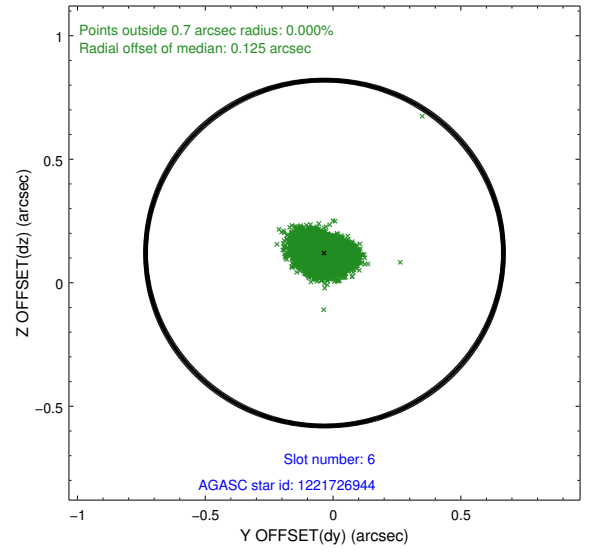
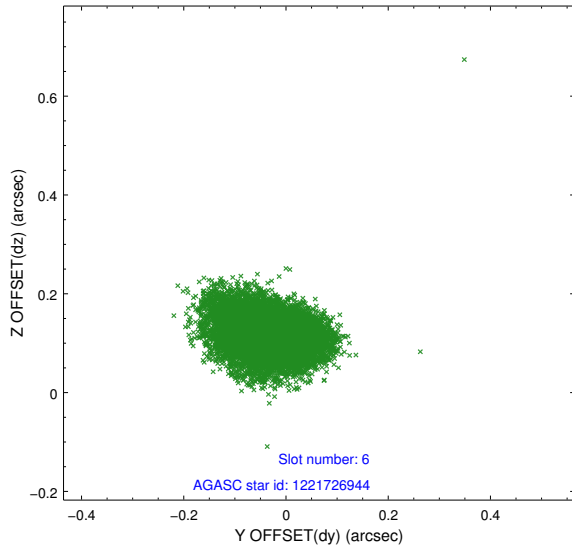
2.4.2 Slot 4



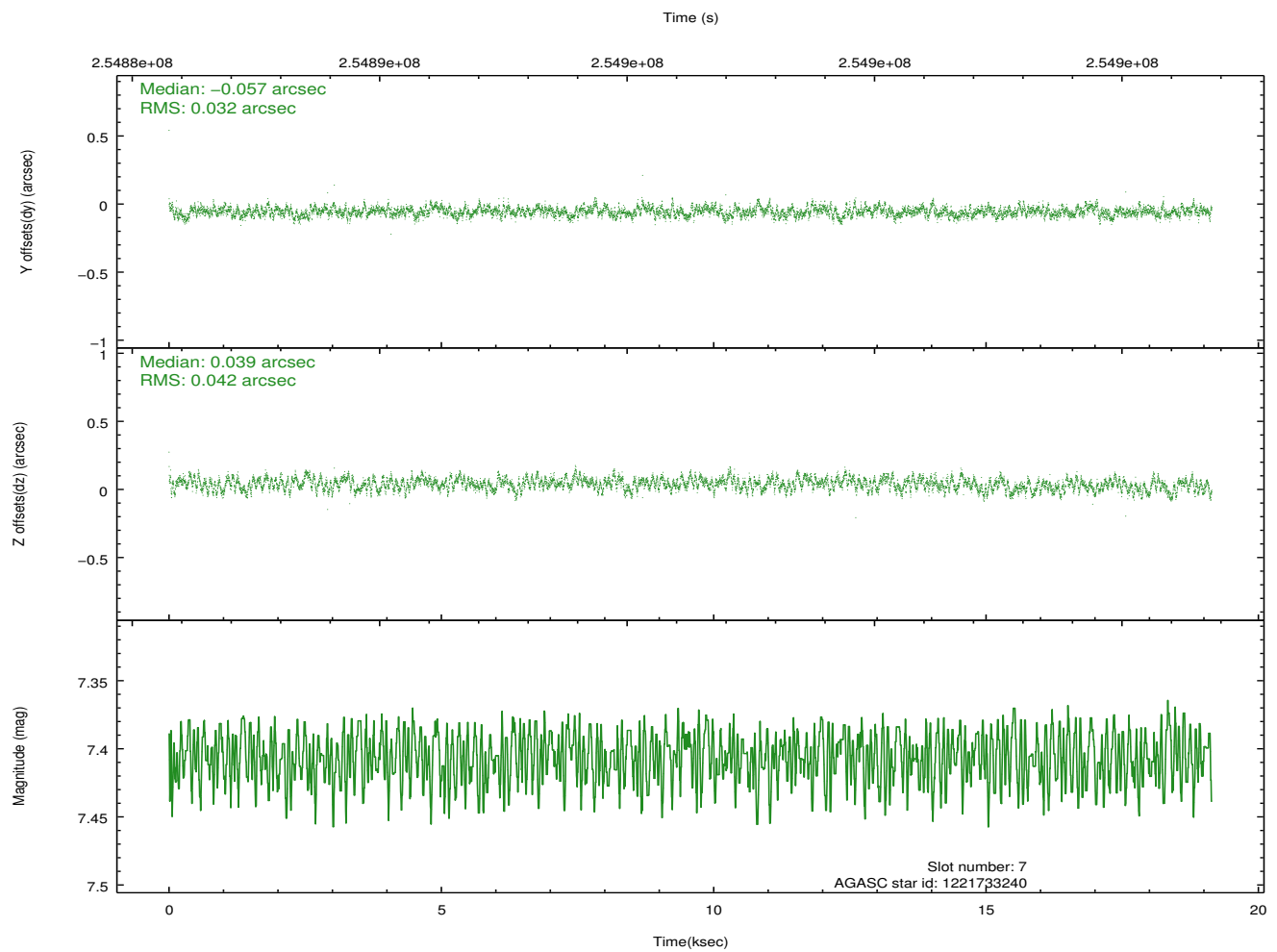
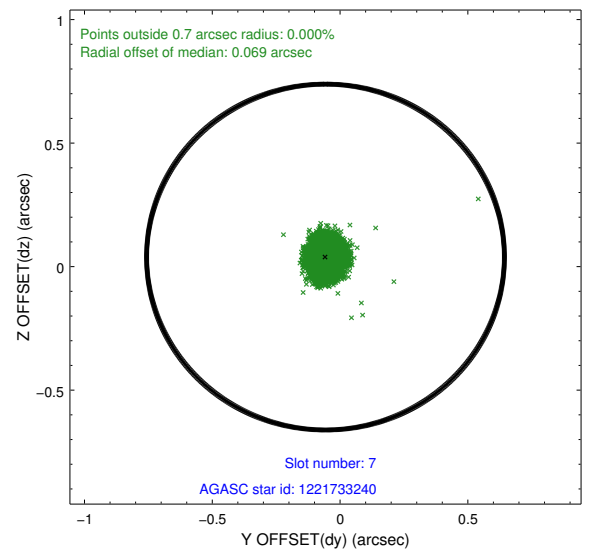
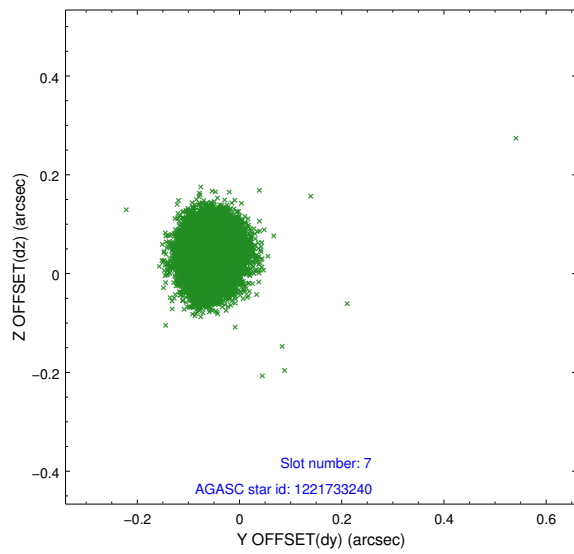
2.4.3 Slot 5



2.4.4 Slot 6

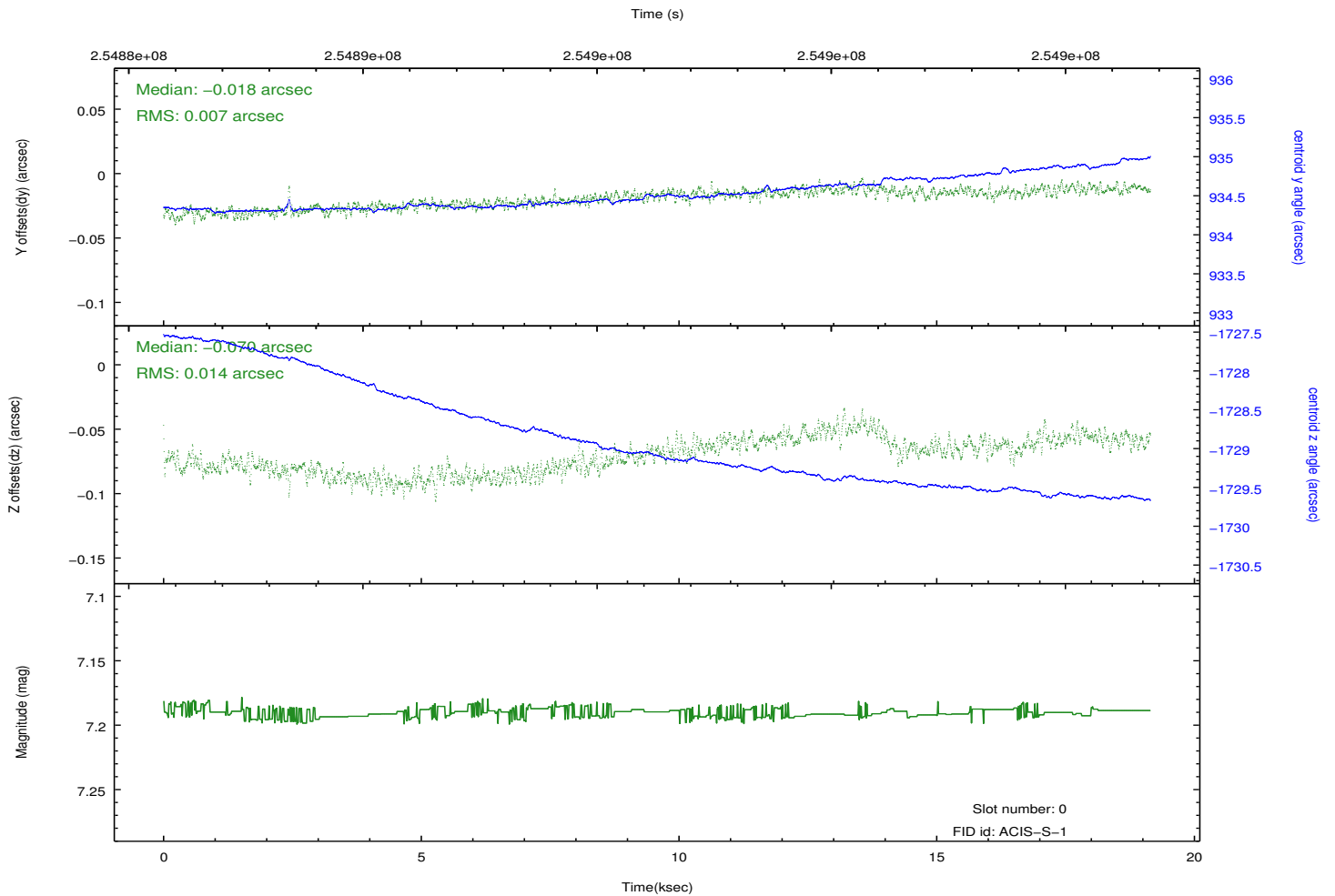
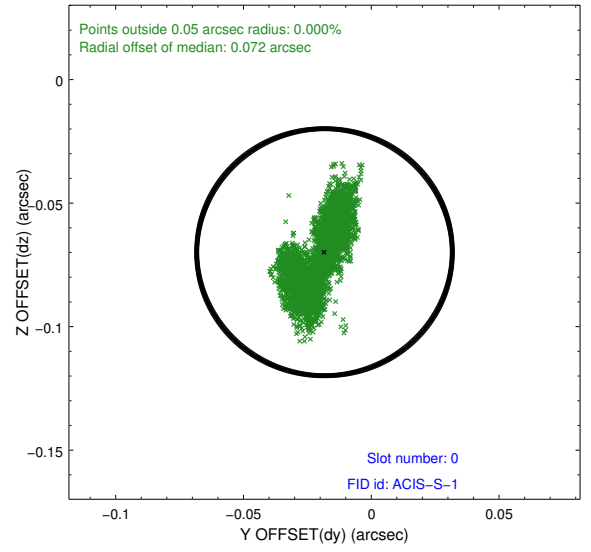
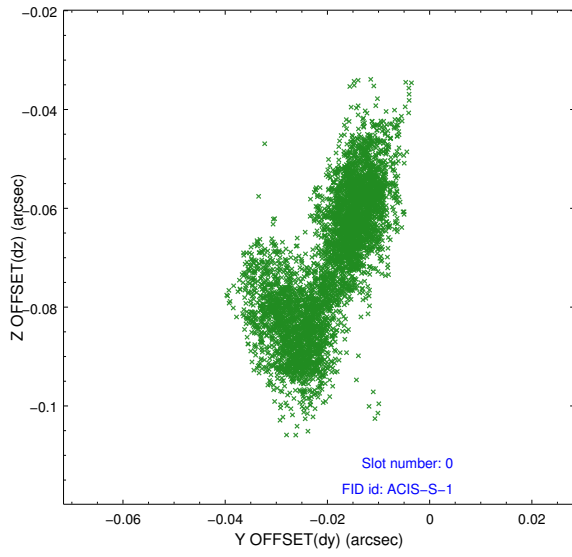


2.4.5 Slot 7

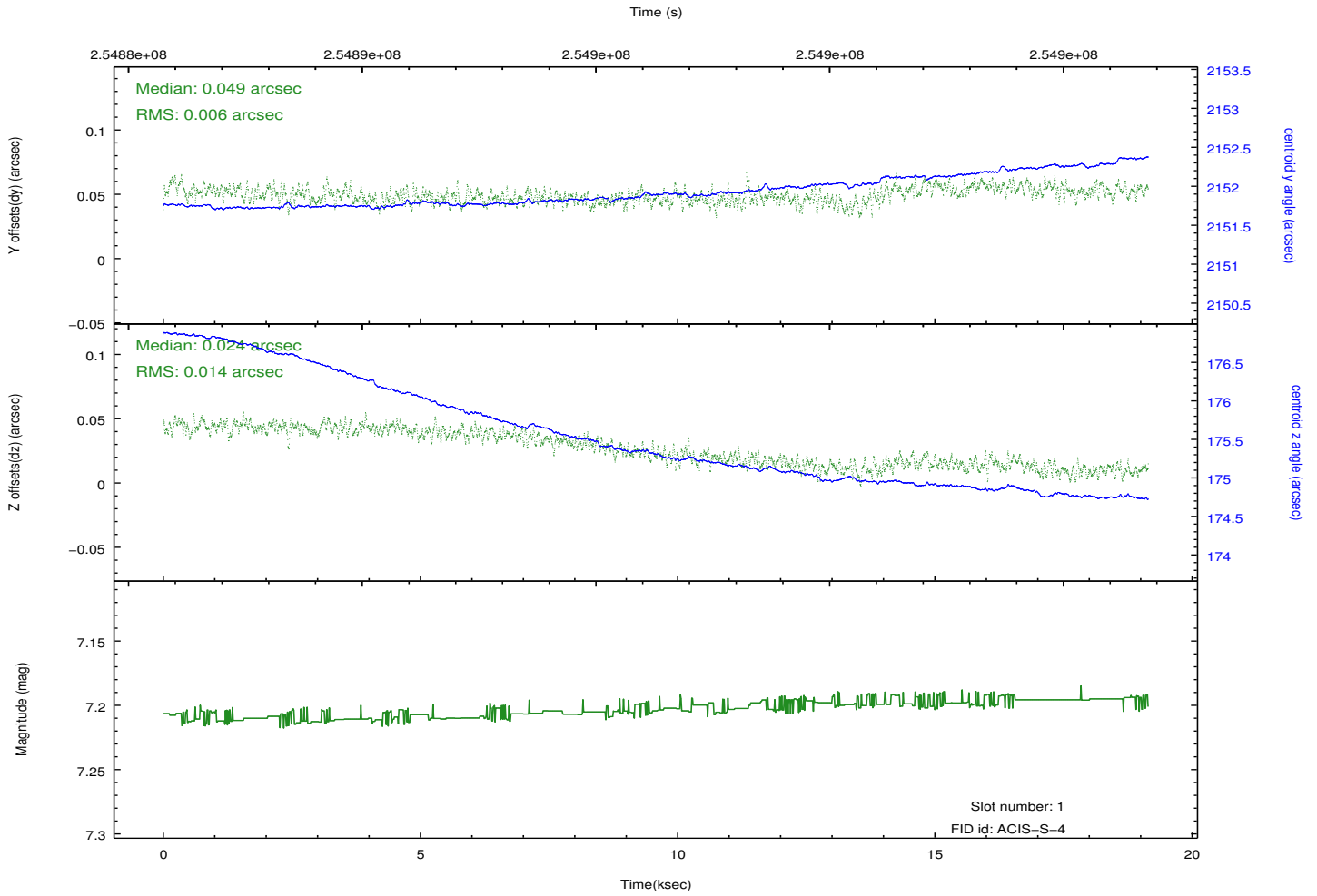
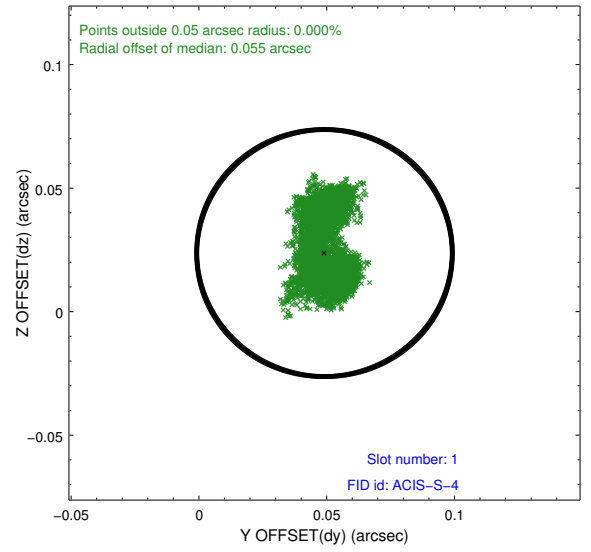
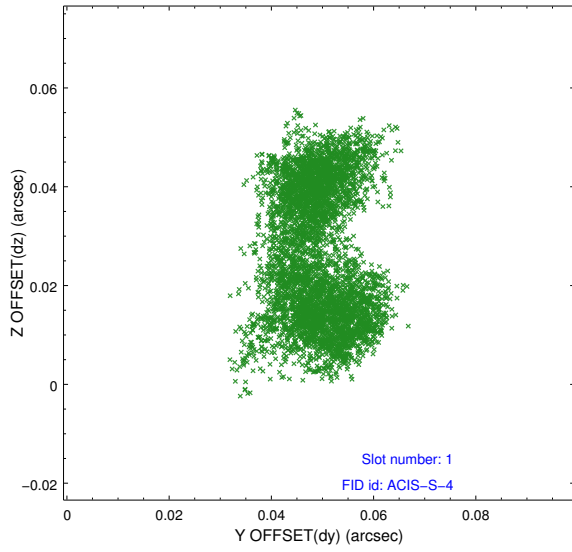


2.5 FID Slots

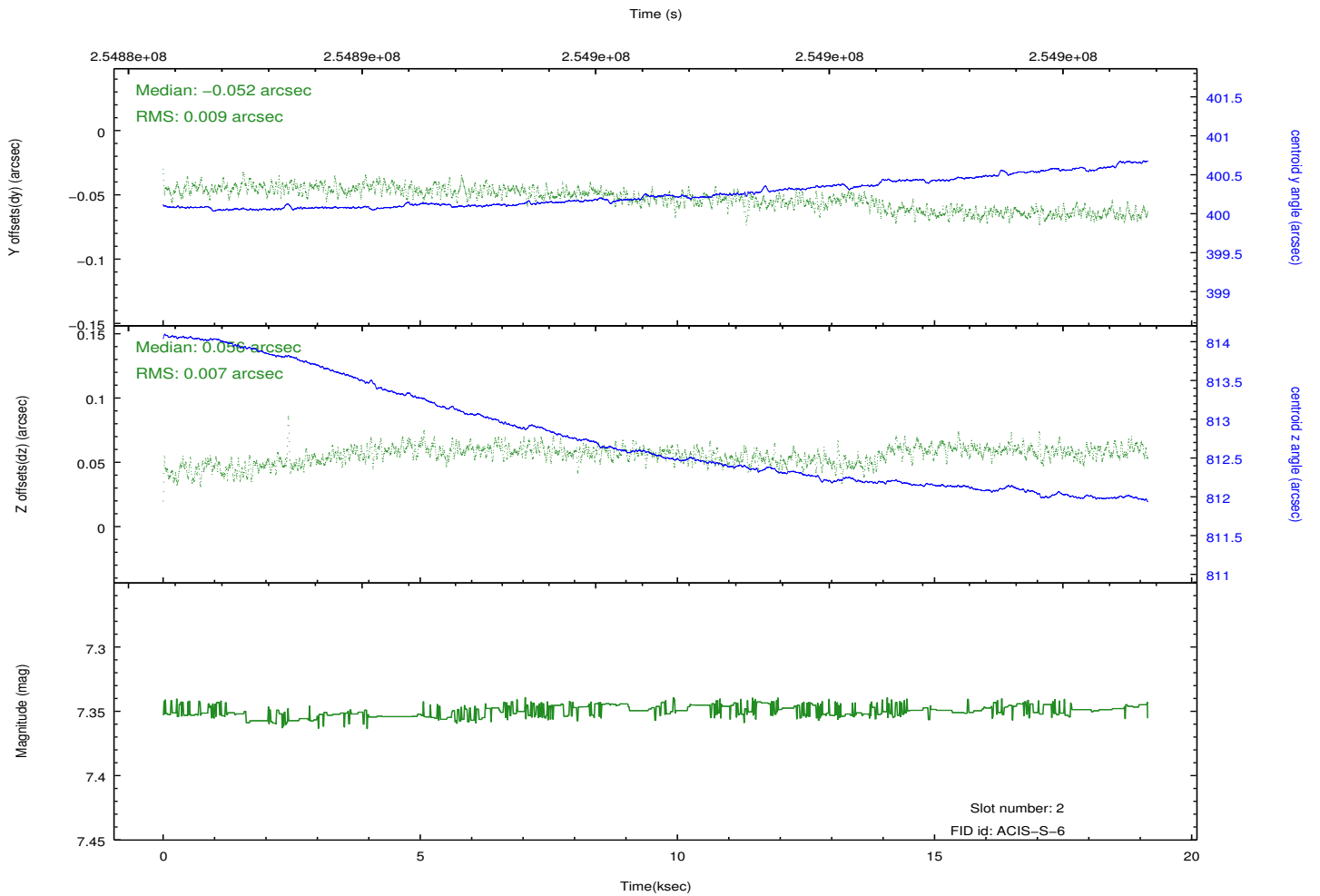
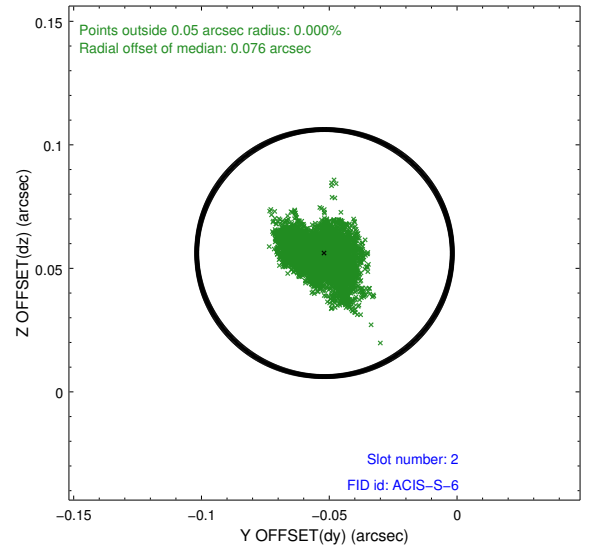
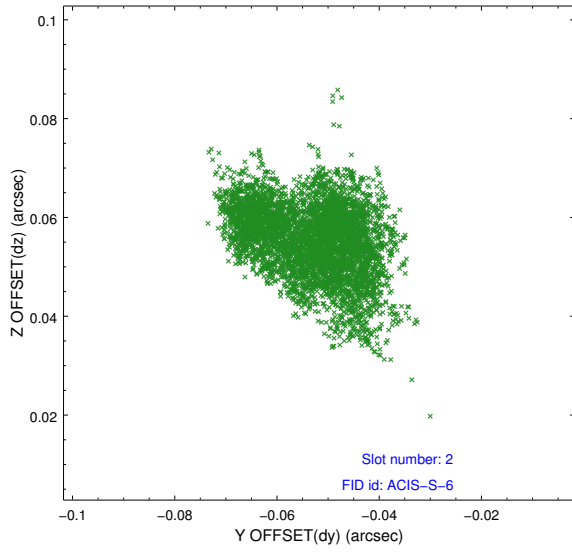
2.5.1 Slot 0



2.5.2 Slot 1



2.5.3 Slot 2



A Summary

A.1 Status

V&V Scientist	Jen Lauer
V&V Date (YYYY-MM-DD)	2012.04.19
V&V Edition	1
V&V Disposition and Status	OK
V&V Charge Time	19.1423999

A.2 Comments

A spatial region of the original bias map for CCD = 2 suffered from anomalously high data values. Pixels in the event data that were bias-corrected by one of the original affected bias pixels may have an apparent energy shift. While the change in energy is expected to be small (~ 20 eV), it depends on many parameters that have not yet been fully explored for this bias anomaly. The bias map for CCD = 2 has been reconstructed for this processing to remove this anomaly using scaled data from a comparable bias map from another observation. The pixels affected by the anomaly are bounded by sky coords:

(313.11468, -68.86475), (313.11521, -68.86897), (313.50163, -68.86262), (313.50103, -68.85840)