

# V&V Reference Report

## L2 ASCDS Version : 8.4.3

Observation 6938 - L2 Version 2  
Chandra X-Ray Center

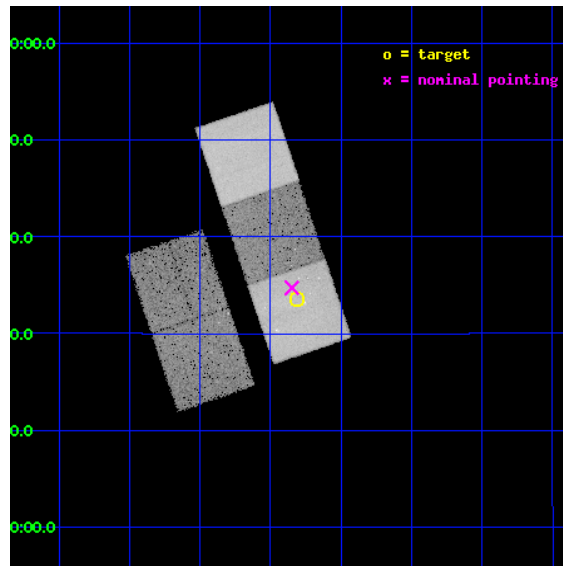
L2 Processing Date : Mar 23 2012

## Contents

<b>1</b>	<b>Front</b>	<b>2</b>
<b>2</b>	<b>OBI</b>	<b>3</b>
2.1	OBI . . . . .	3
2.1.1	Images . . . . .	3
2.1.2	Bias . . . . .	3
2.1.3	Parameters . . . . .	4
2.1.4	Events . . . . .	4
2.2	Compared Parameters . . . . .	5
2.3	Aspect . . . . .	6
2.4	Star Slots . . . . .	9
2.4.1	Slot 3 . . . . .	9
2.4.2	Slot 4 . . . . .	10
2.4.3	Slot 5 . . . . .	11
2.4.4	Slot 6 . . . . .	12
2.4.5	Slot 7 . . . . .	13
2.5	FID Slots . . . . .	14
2.5.1	Slot 0 . . . . .	14
2.5.2	Slot 1 . . . . .	15
2.5.3	Slot 2 . . . . .	16
<b>A</b>	<b>Summary</b>	<b>17</b>
A.1	Status . . . . .	17
A.2	Comments . . . . .	17

# 1 Front

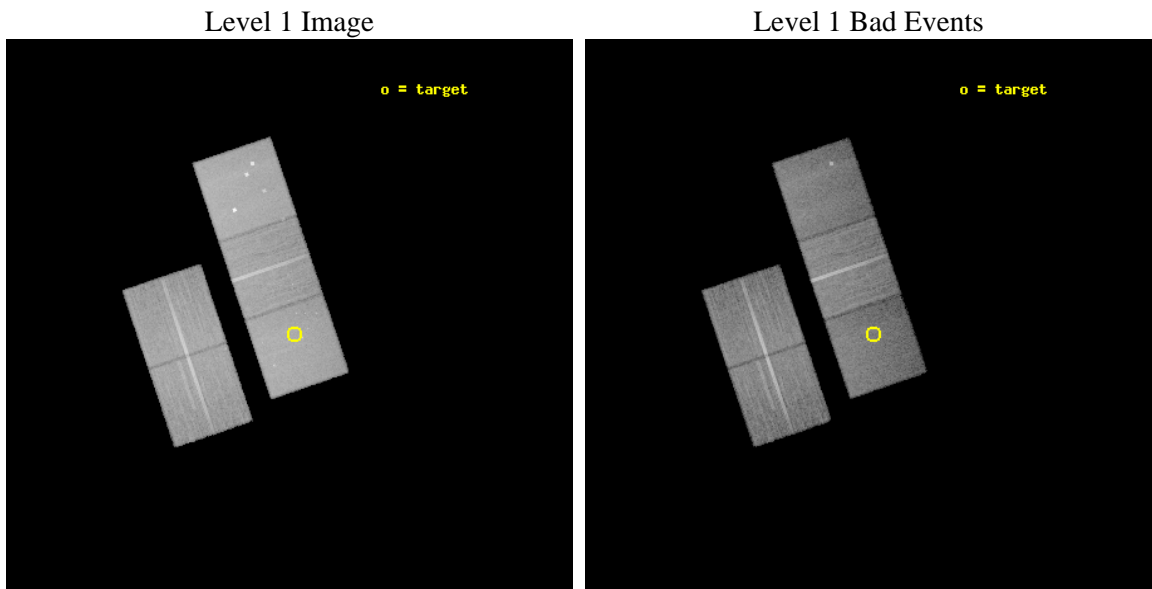
seq_num	800571	Sequence number
obs_id	6938	Observation id
title	The Cosmological Formation of Galaxy Groups	Proposal title
observer	Dr. DAVID BUOTE	Principal investigator
object	RXC J1100.8+1033	Source name
dtcycle	0	&#160
cycle	P	events from which exps? Prim/Second/Both
ra_targ	165.20375	Observer's specified target RA [deg]
dec_targ	10.559722	Observer's specified target Dec [deg]
ra_nom	165.21213546093	Nominal RA [deg]
dec_nom	10.578783979547	Nominal Dec [deg]
roll_nom	71.354588246193	Nominal Roll [deg]
revision	2	Processing version of data
ontime	27038.199947983	Sum of GTIs [s]
livetime	26684.925960429	Livetime [s]
ontime2	27035.058957726	Sum of GTIs [s]
ontime3	27038.199947983	Sum of GTIs [s]
ontime5	27038.199947983	Sum of GTIs [s]
ontime6	27038.199947983	Sum of GTIs [s]
ontime7	27038.199947983	Sum of GTIs [s]
l2events	263312	Number of level 2 events



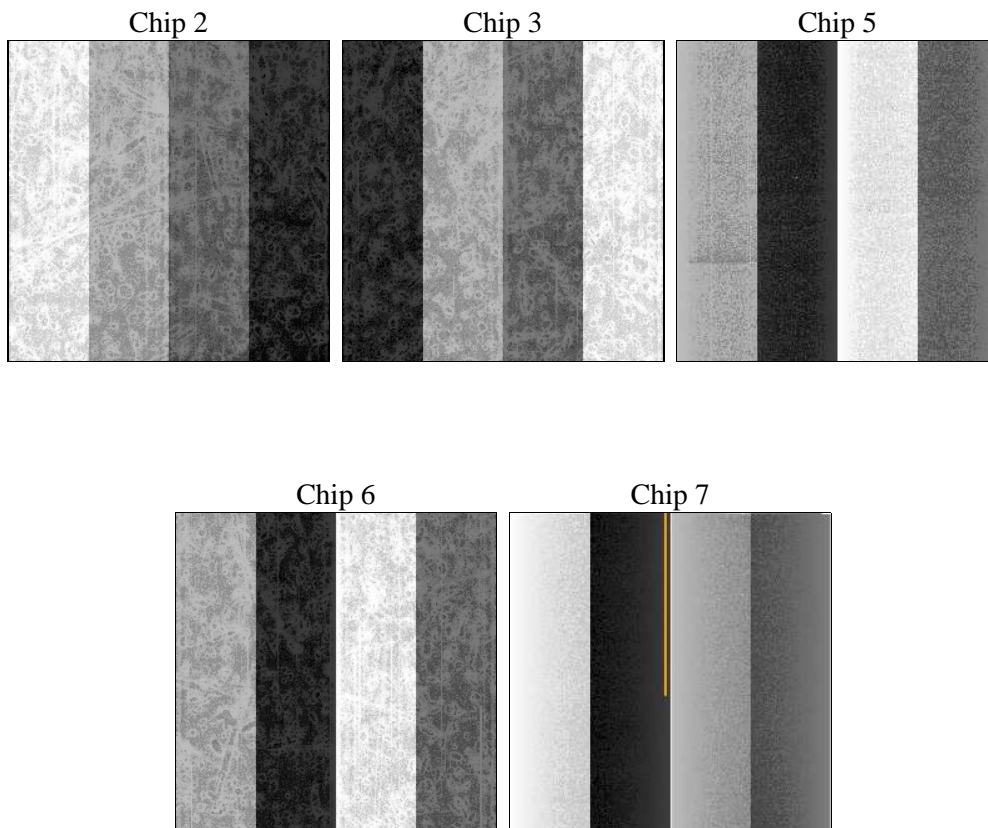
## 2 OBI

### 2.1 OBI

#### 2.1.1 Images



#### 2.1.2 Bias



### 2.1.3 Parameters

obi_num	0	Obi number	sched_exp_time	27000.000000	[s] Scheduled observation exposure time
ascdsver	8.4.3.1	Processing system revision	ontime	27038.199947983	Sum of GTIs [s]
caldbver	4.4.8	&#160	ontime2	27035.058957726	Sum of GTIs [s]
date	2012-03-23T14:49:05	Date and time of file creation	ontime3	27038.199947983	Sum of GTIs [s]
revision	2	Processing version of data	ontime5	27038.199947983	Sum of GTIs [s]
			ontime6	27038.199947983	Sum of GTIs [s]
			ontime7	27038.199947983	Sum of GTIs [s]
			l1events	1037197	Number of level 1 events

### 2.1.4 Events

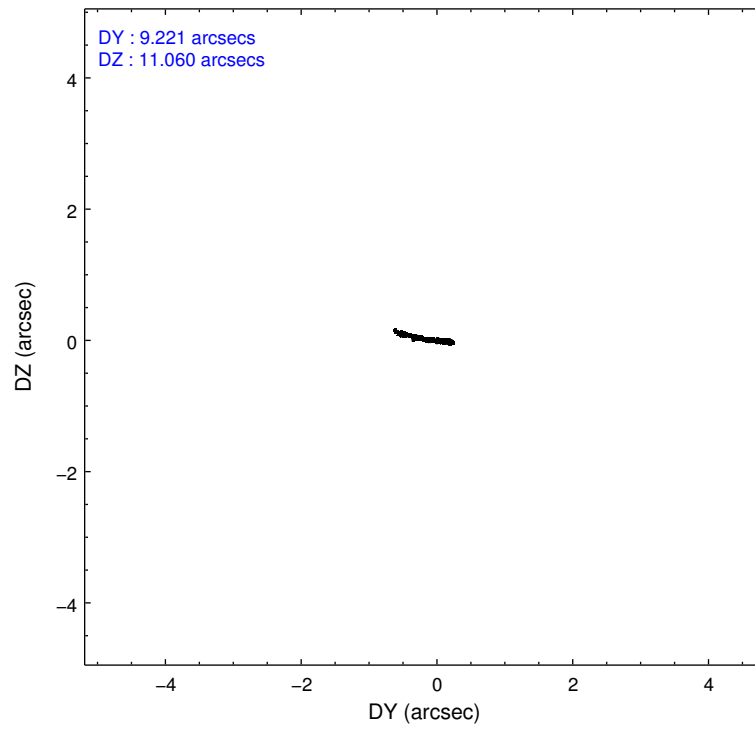
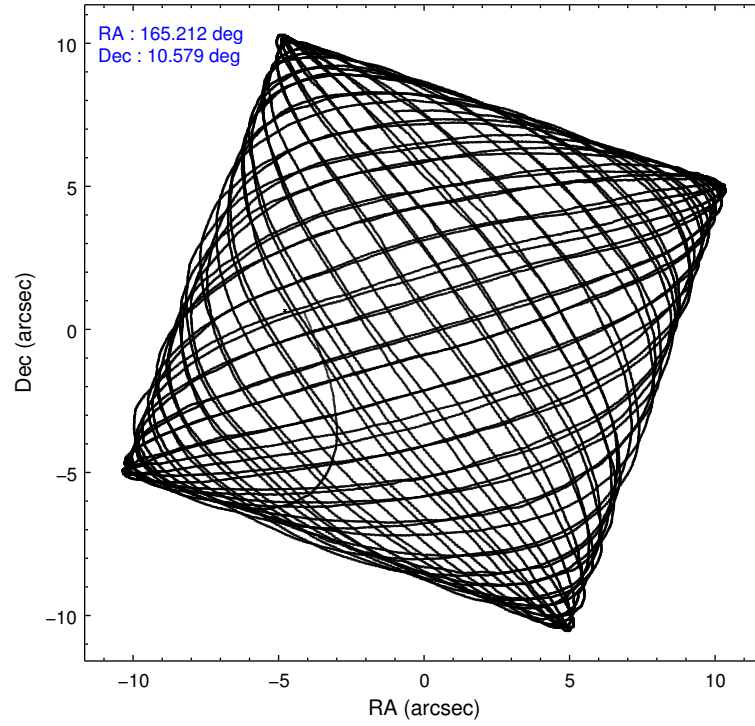
	ccd 2	ccd 3	ccd 5	ccd 6	ccd 7
level 1 events	192132	180921	258803	190455	214886
rejected events	174489	163263	127964	170446	113045
rejected %	90%	90%	49%	89%	52%

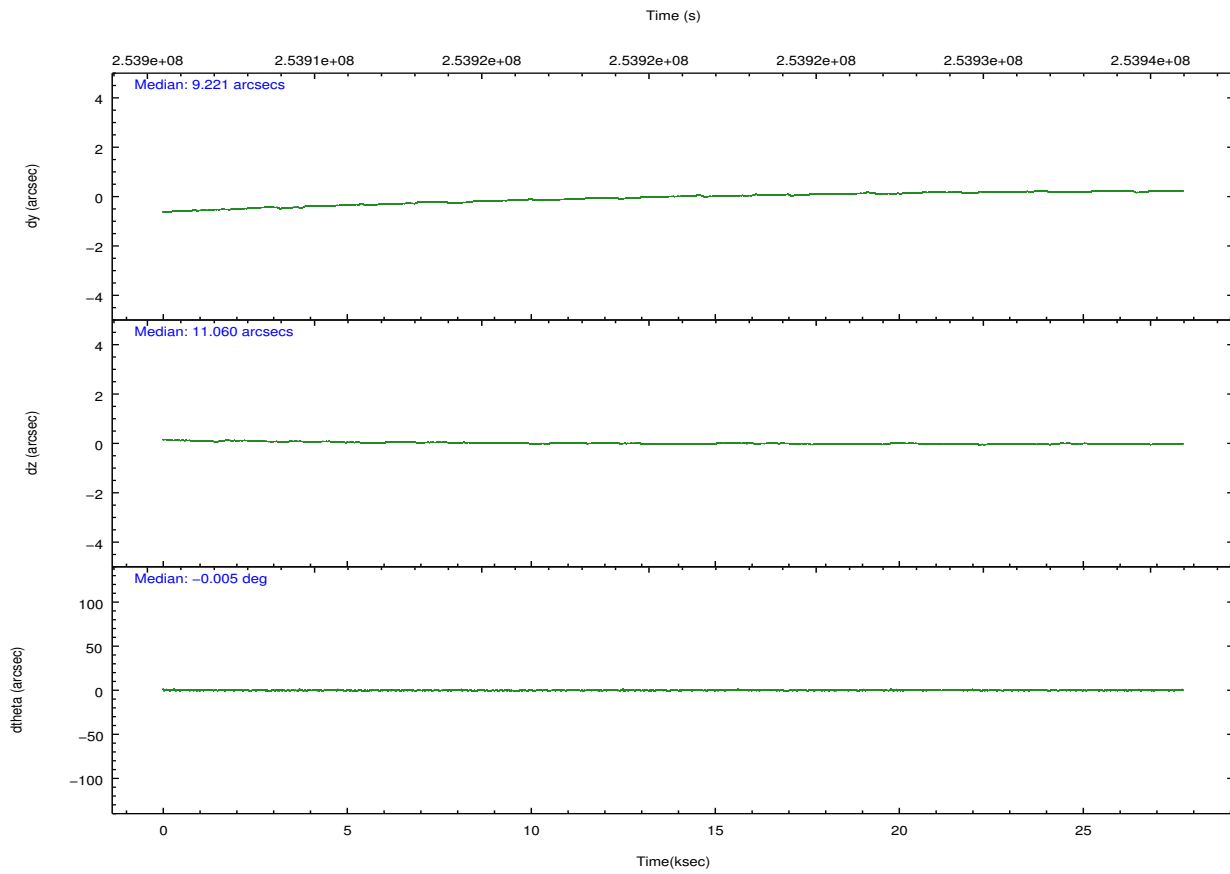
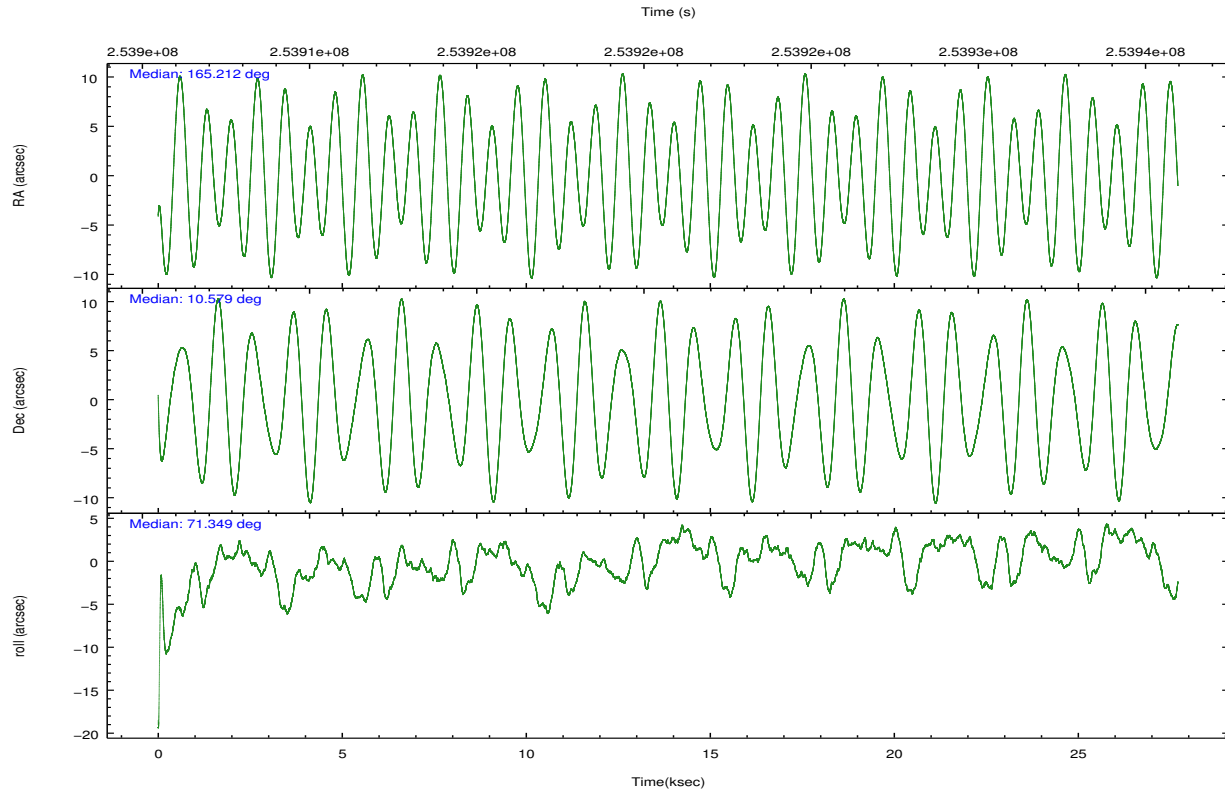
	ccd 2	ccd 3	ccd 5	ccd 6	ccd 7
grade 0 events	6516	6495	17243	7295	11421
	3%	3%	6%	3%	5%
grade 1 events	92	87	245	84	201
	0%	0%	0%	0%	0%
grade 2 events	3994	3737	37427	4257	21001
	2%	2%	14%	2%	9%
grade 3 events	1916	2080	5625	2194	9854
	0%	1%	2%	1%	4%
grade 4 events	1975	1961	5299	2122	9710
	1%	1%	2%	1%	4%
grade 5 events	5872	7171	20730	7531	22001
	3%	3%	8%	3%	10%
grade 6 events	3246	3391	65276	4151	49881
	1%	1%	25%	2%	23%
grade 7 events	168521	155999	106958	162821	90817
	87%	86%	41%	85%	42%

## 2.2 Compared Parameters

Parameter	Planned	Actual	Parameter	Planned	Actual
Instrument	ACIS	ACIS	Obspar format version number	7	7
Detector	ACIS-23567	ACIS-23567	Obspar file type	PREDICTED	ACTUAL
Grating	NONE	NONE	Obspar update status	NONE	UPDATED
Data mode	VFAINT	VFAINT	Number of optional ACIS chips dropped	0	0
Observation mode	POINTING	POINTING	On-chip summing requested	N	N
[deg] Pointing RA	165.217966	165.2121354609296	Subarray requested	NONE	NONE
[deg] Pointing Dec	10.552149	10.57878397954654	Alternating exposures requested	N	N
[deg] Pointing Roll	71.196900	71.35458824619283	[s] Primary exposure time	0.000000	3.1
[mm] SIM focus pos	-0.684267	-0.6828225247311905			
[mm] SIM defocus	0	0.001444936568705701			
[mm] SIM translation stage pos	-190.132523	-190.1400660498719			
[mm] SIM translation stage offset	0	0.00754346686406393			
[s] Observation start time (MET)	253907571.184000	253906223.53293			
Observation start date	2006-01-17T17:51:46	2006-01-17T17:30:23			
[s] Observation end time (MET)	253934571.184000	253935271.52178			
Observation end date	2006-01-18T01:21:46	2006-01-18T01:34:31			
Read mode	TIMED	TIMED			

## 2.3 Aspect



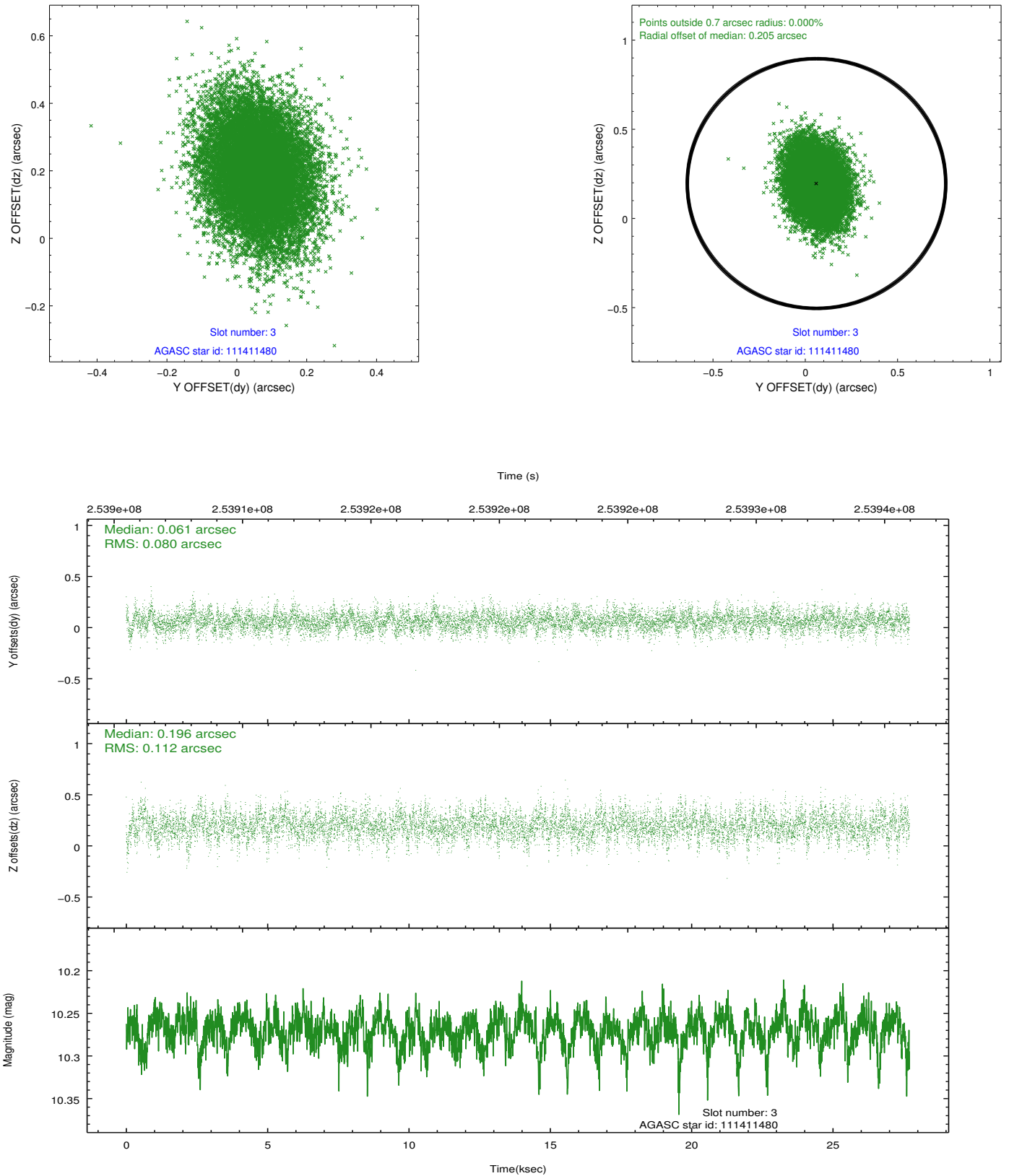


### Slot Statistics

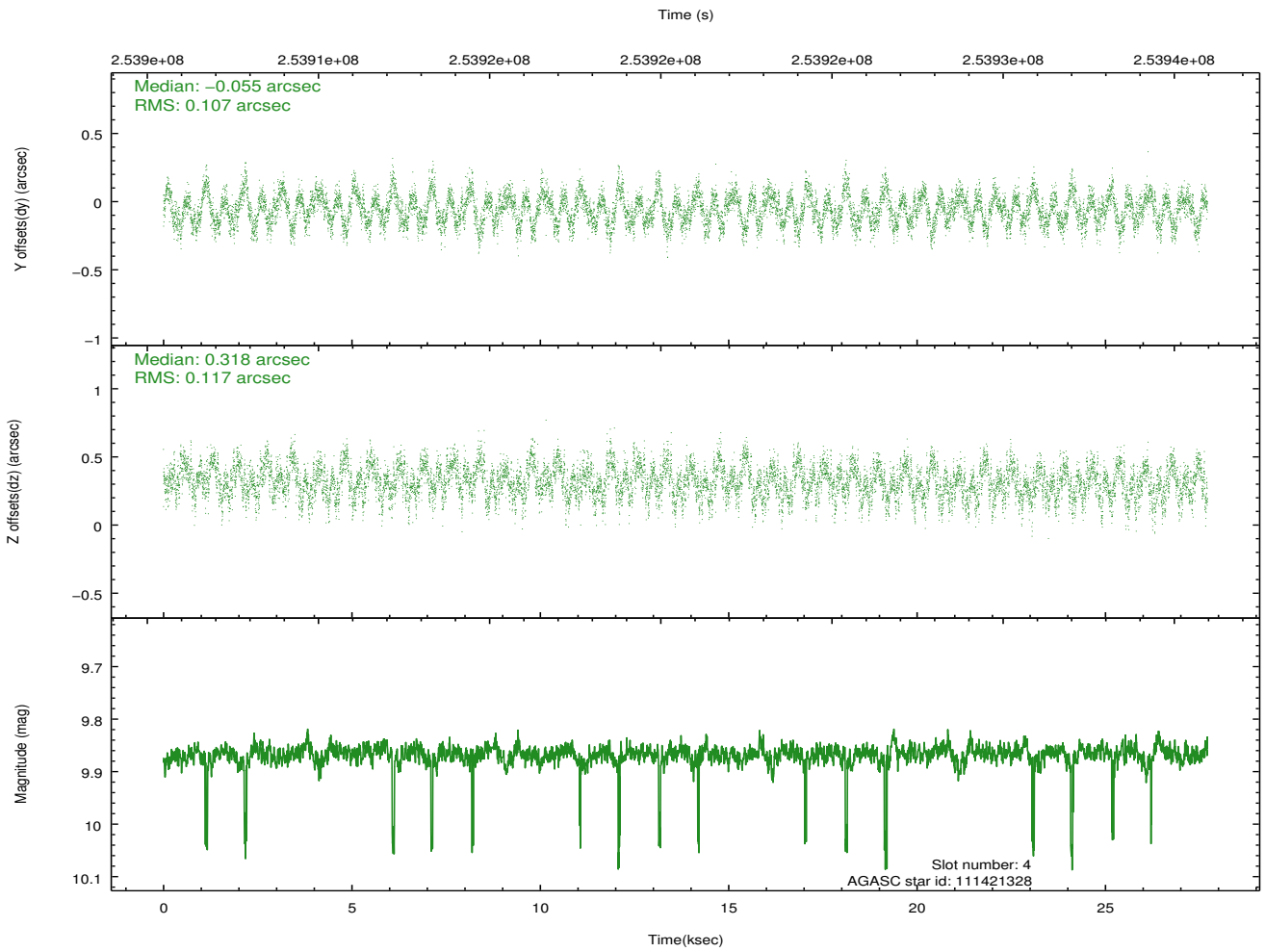
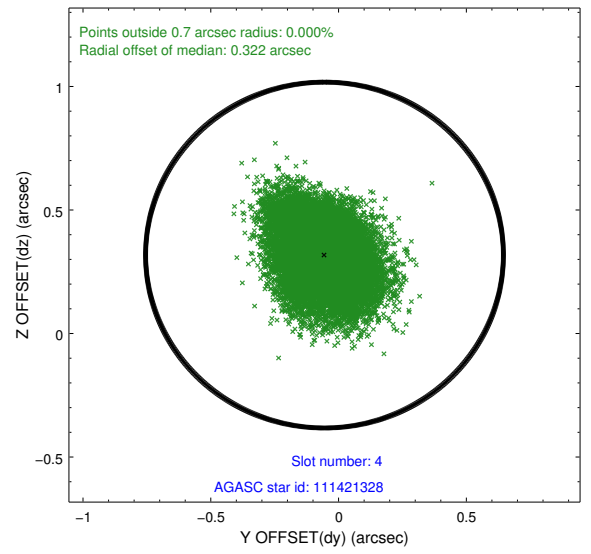
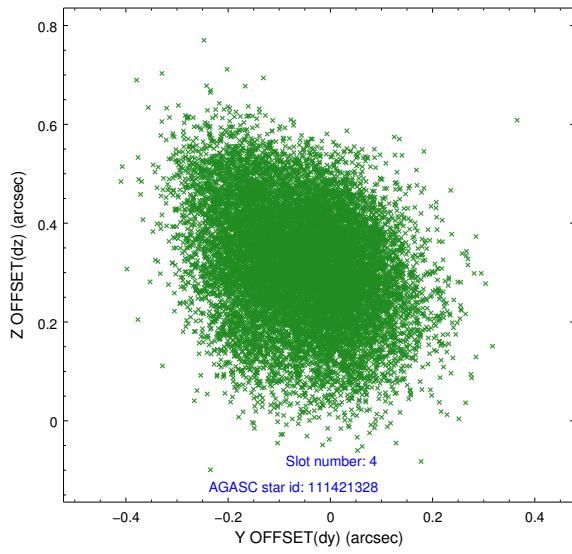
slot	status	id	mag	n_pts	med_dy	med_dz	dr1	dr2	ra	dec	mean_y	mean_z
0	FID	ACIS-S-1	7.19	6759	0.016	-0.076	0.008	0.013	0.000000	0.000000	934.08	-1728.06
1	FID	ACIS-S-4	7.21	6759	0.124	0.049	0.012	0.021	0.000000	0.000000	2151.65	176.13
2	FID	ACIS-S-5	7.23	6759	-0.167	0.039	0.008	0.015	0.000000	0.000000	-1814.85	169.82
3	GUIDE	111411480	10.27	13505	0.061	0.196	0.146	0.244	165.649104	10.327340	-273.06	-1705.60
4	GUIDE	111421328	9.87	13459	-0.055	0.318	0.171	0.270	165.573074	10.143305	-987.05	-1665.18
5	GUIDE	111419256	9.92	13511	-0.173	-0.231	0.147	0.239	164.694588	11.109971	1306.06	2397.94
6	GUIDE	111415536	10.18	13499	0.077	-0.335	0.196	0.320	164.433371	10.298107	-1758.40	2336.97
7	GUIDE	111020448	9.77	13506	0.093	0.055	0.132	0.215	164.870010	9.977854	-2354.30	501.90

## 2.4 Star Slots

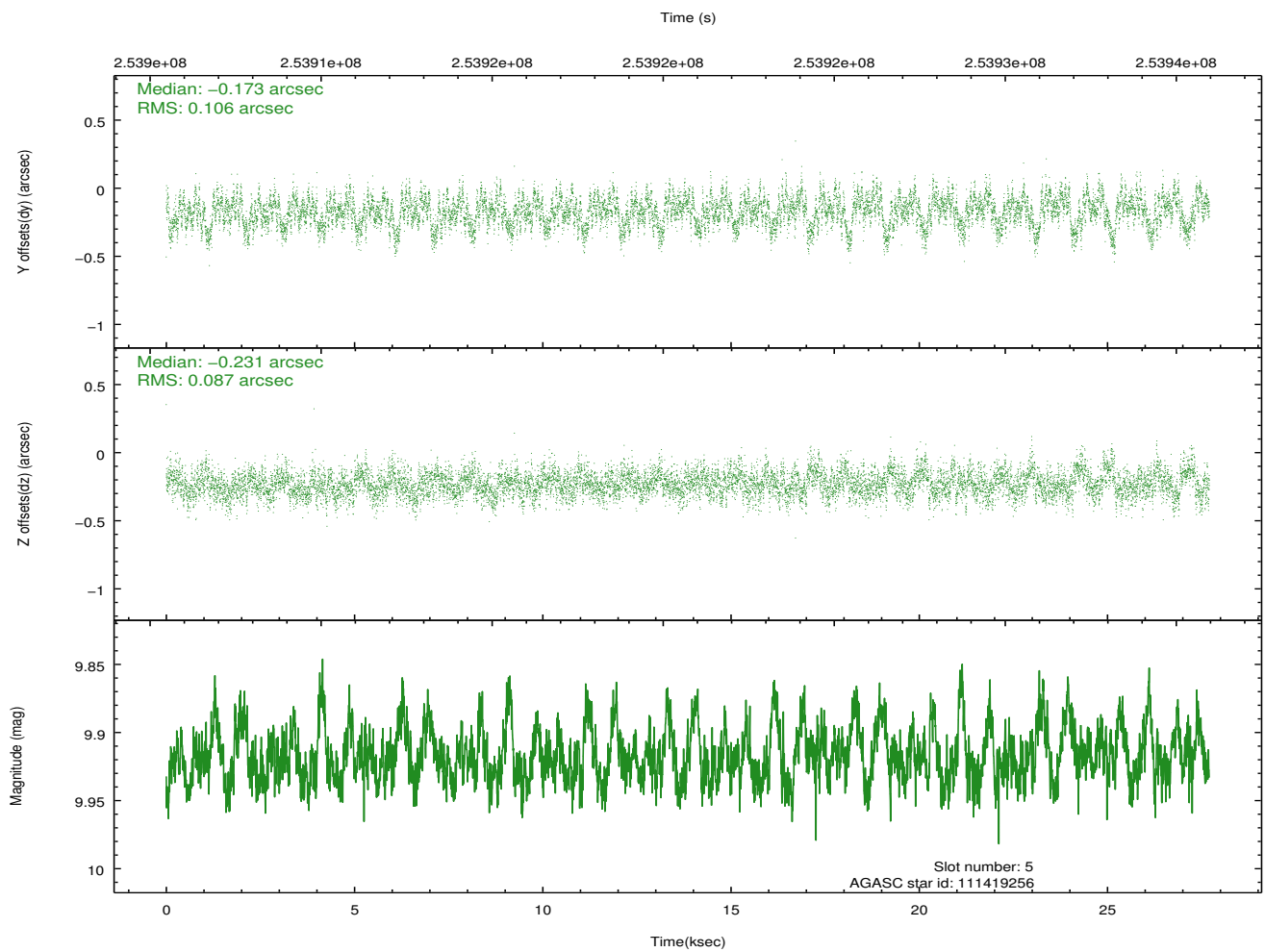
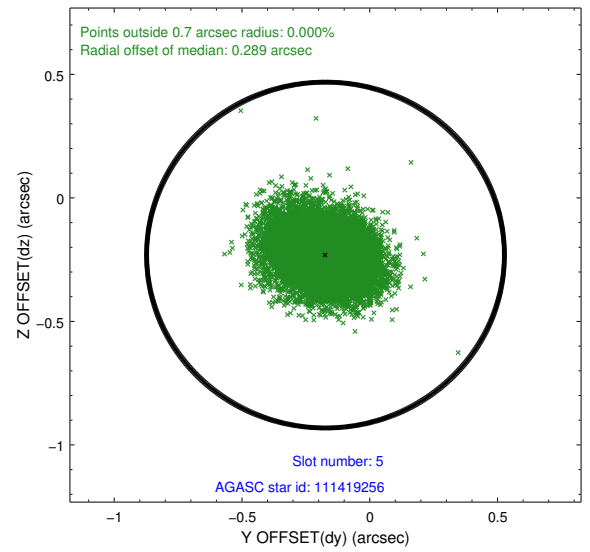
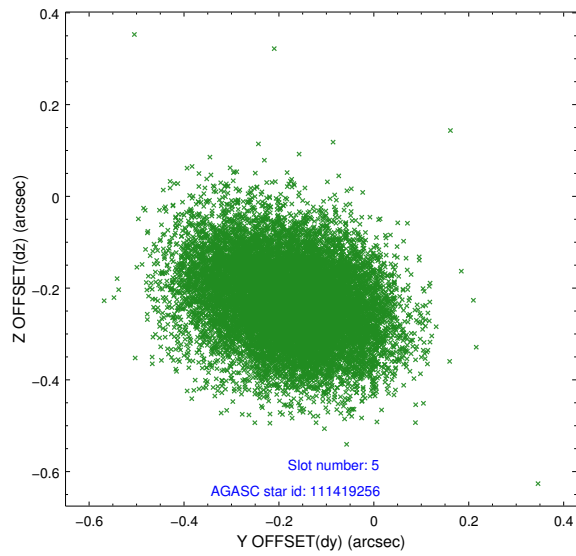
### 2.4.1 Slot 3



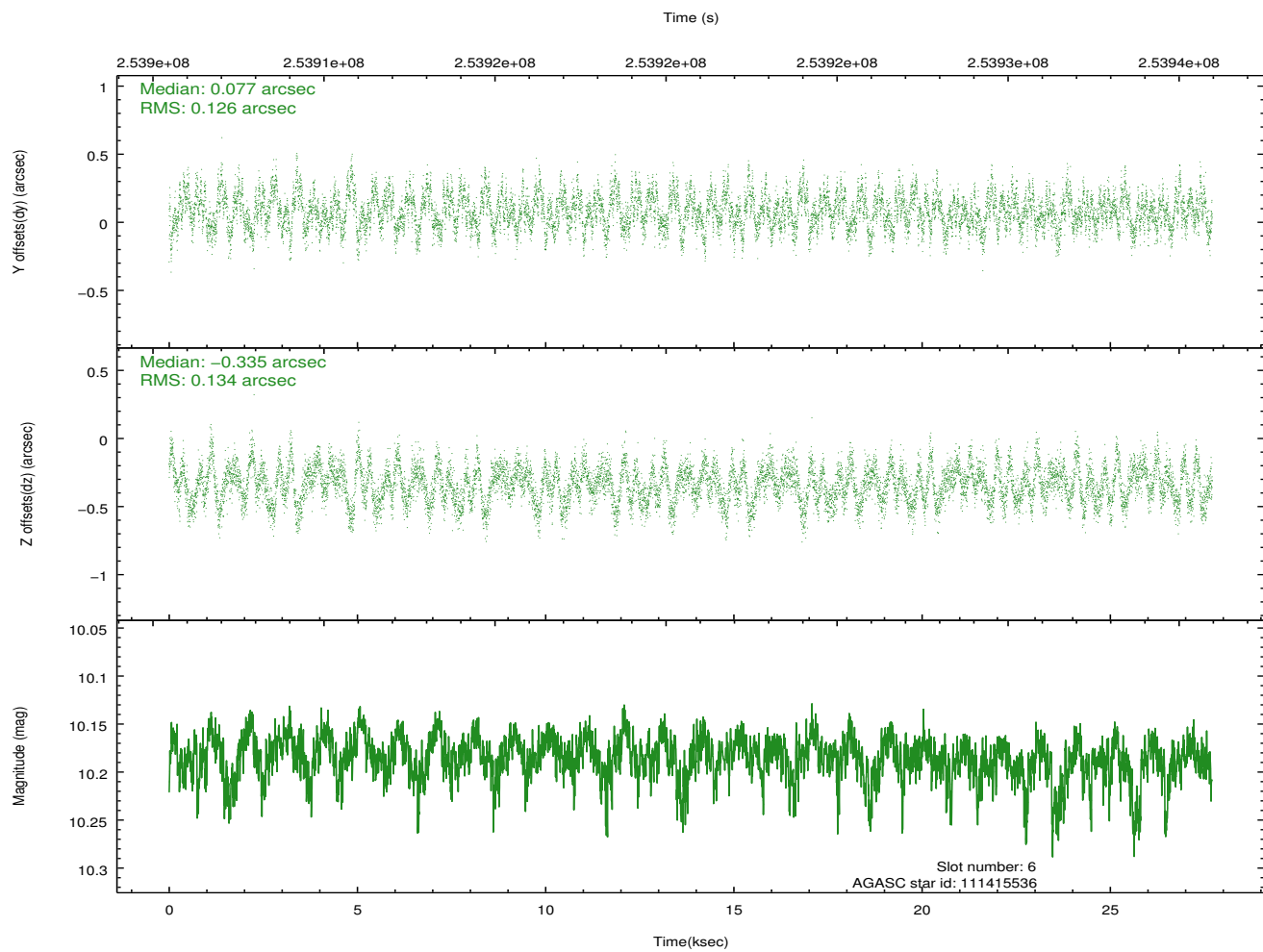
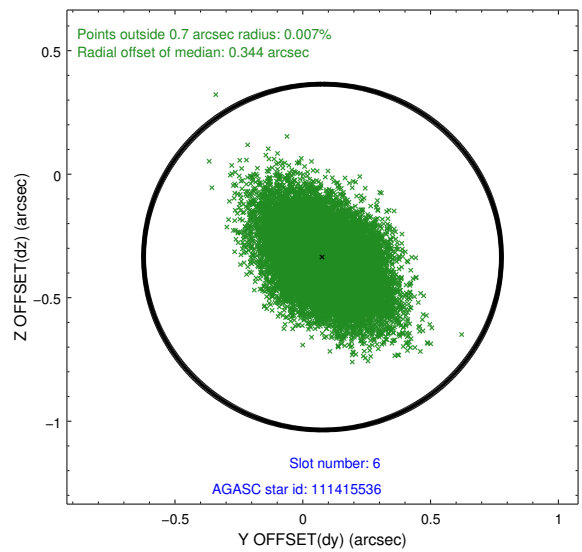
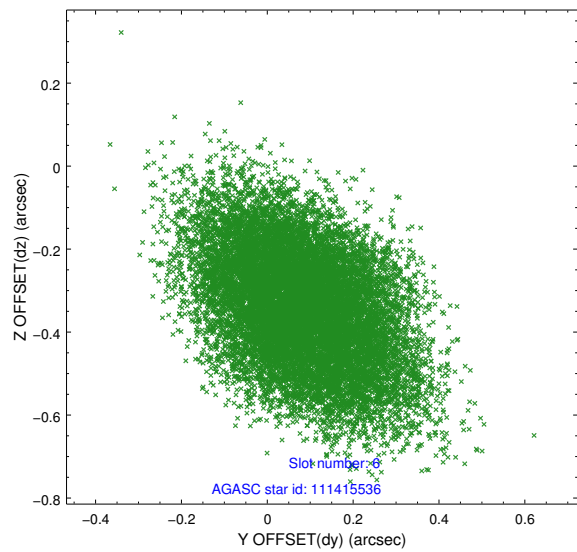
## 2.4.2 Slot 4



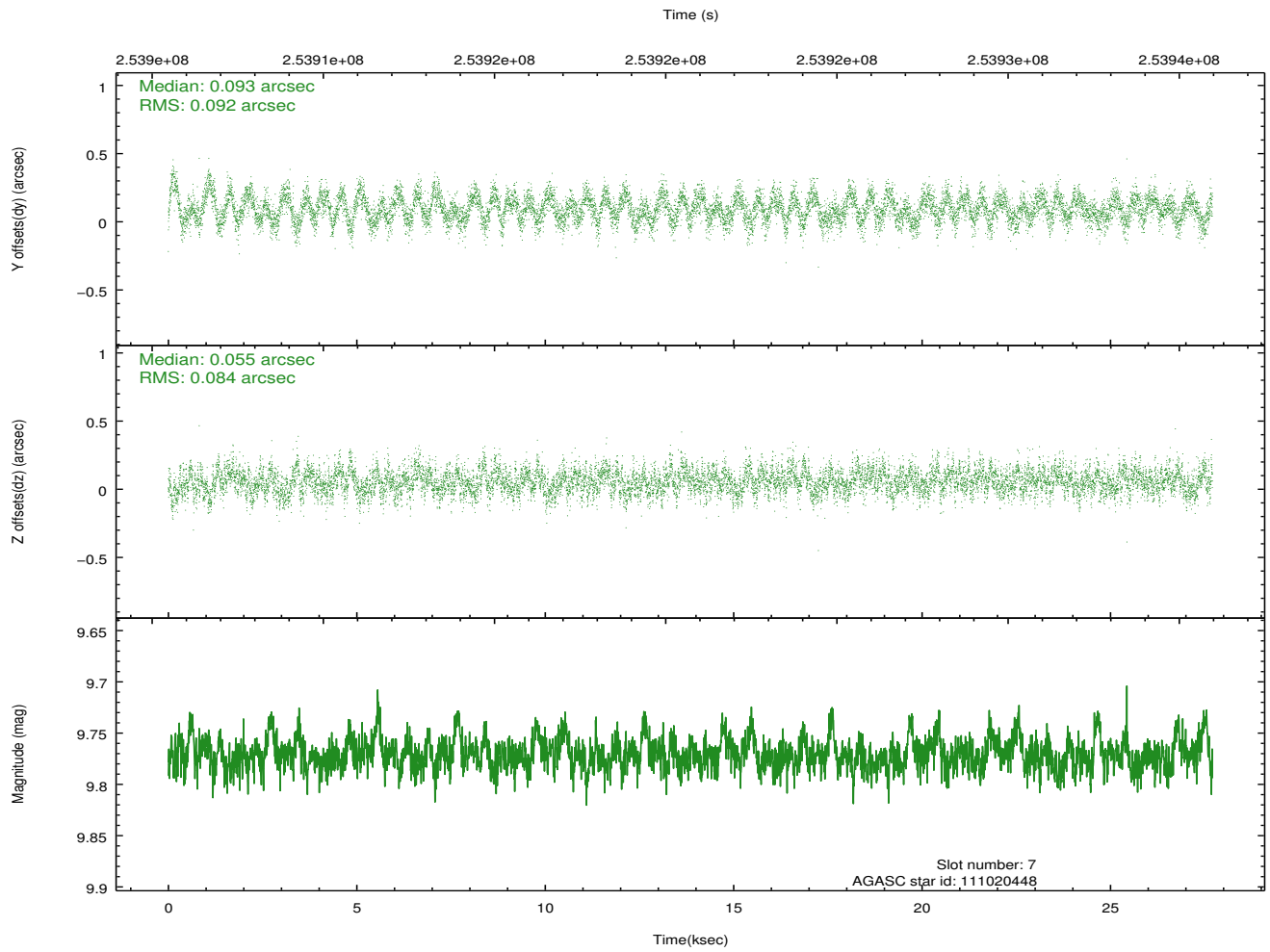
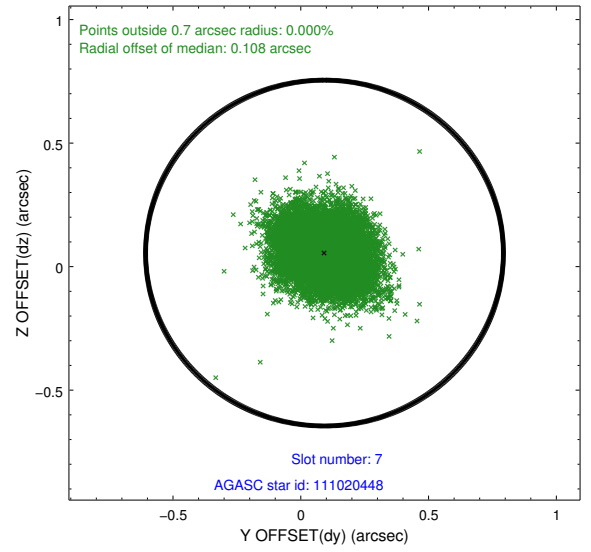
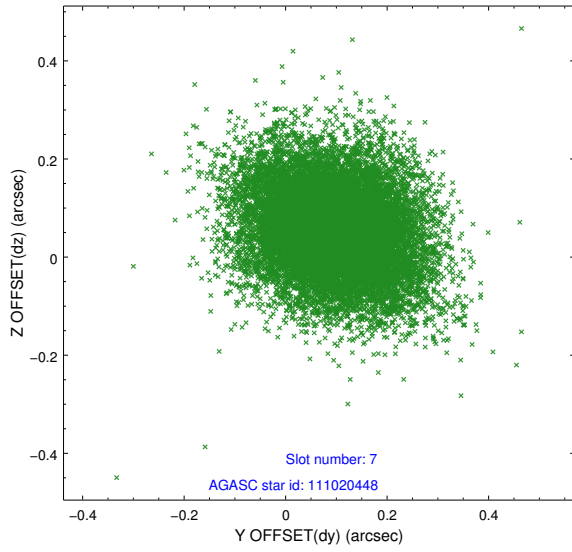
### 2.4.3 Slot 5



## 2.4.4 Slot 6

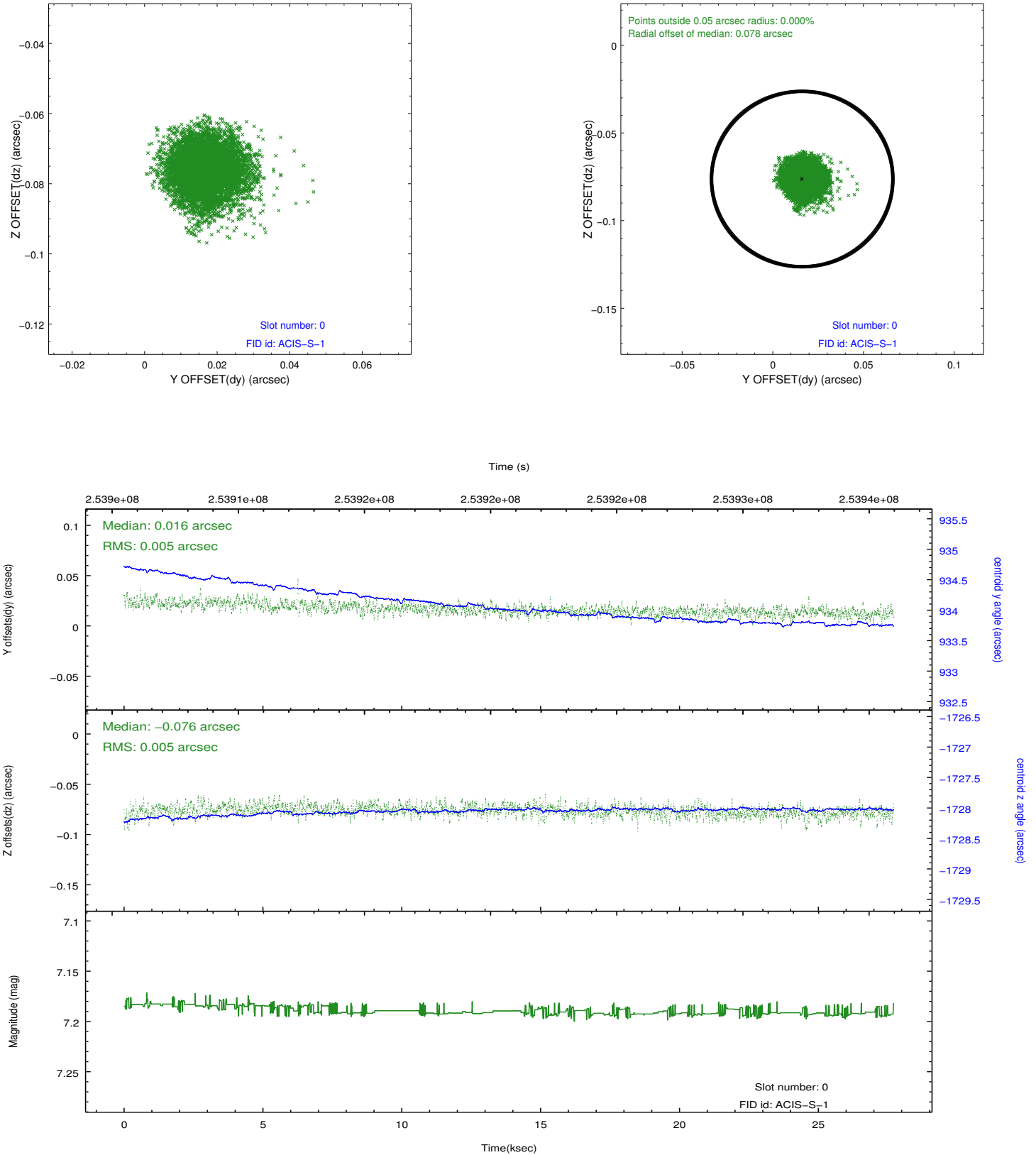


### 2.4.5 Slot 7

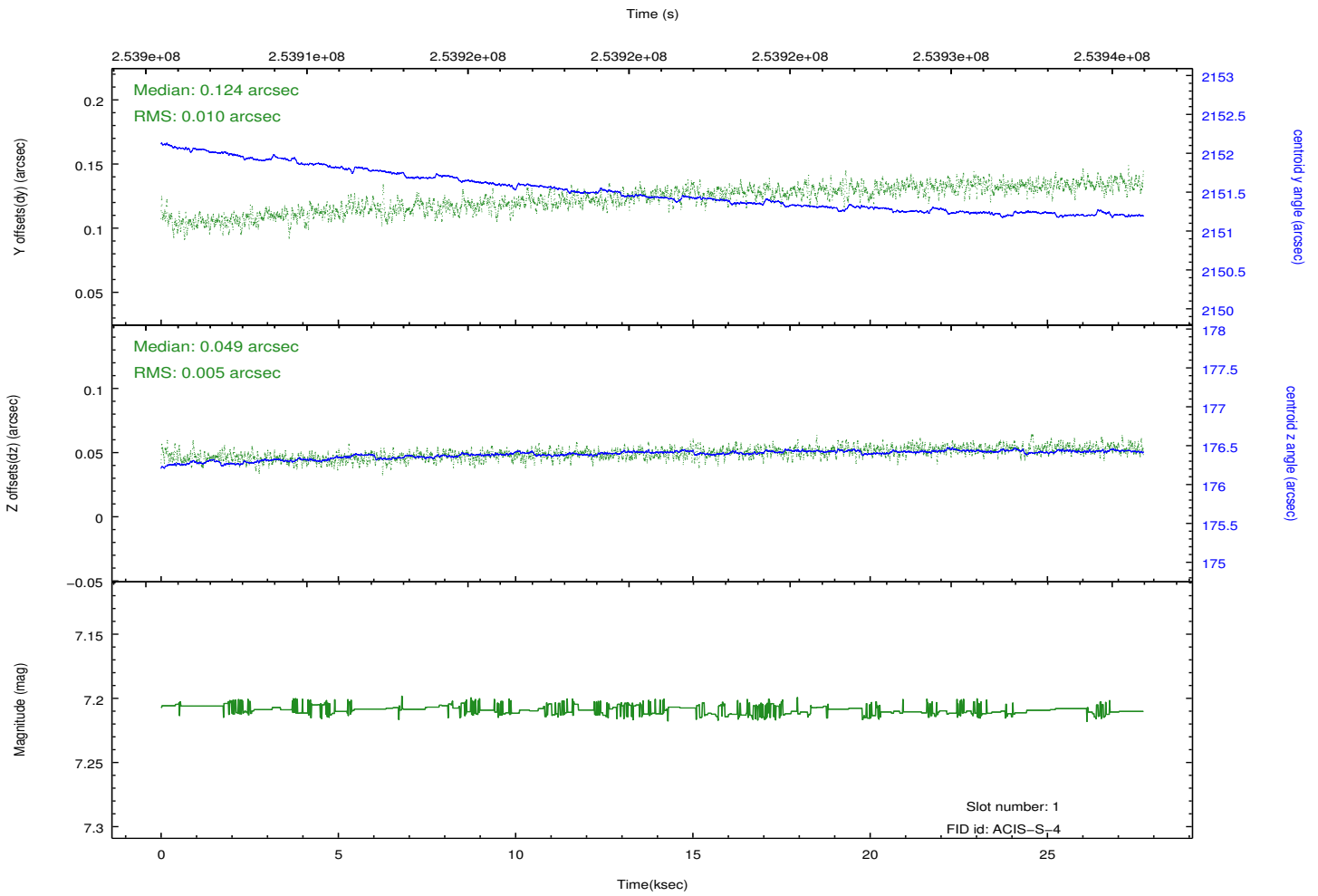
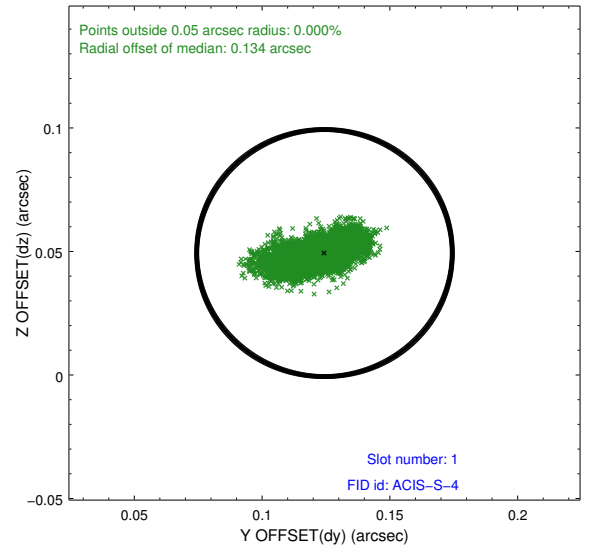
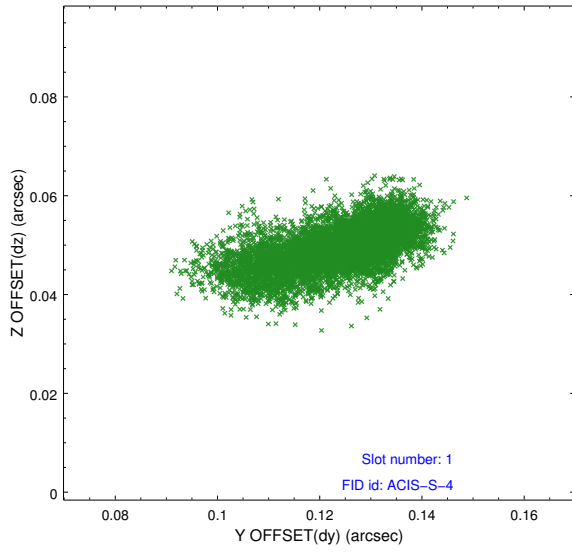


## 2.5 FID Slots

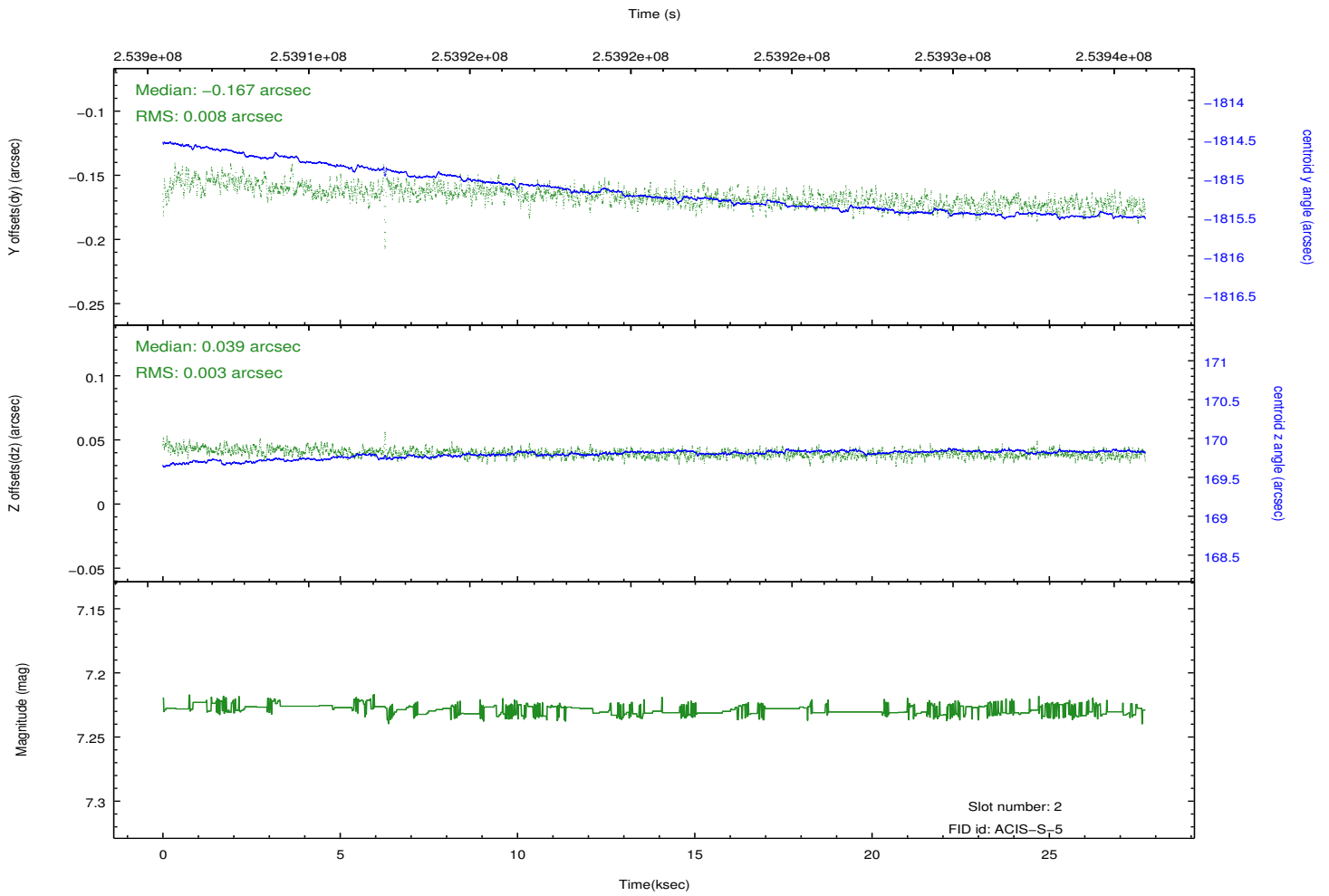
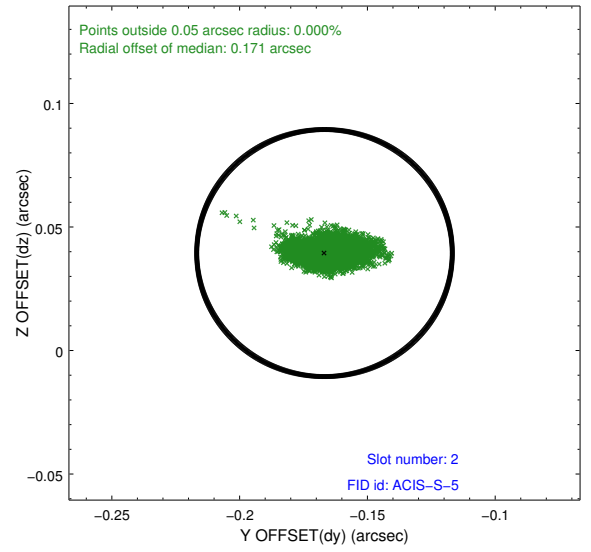
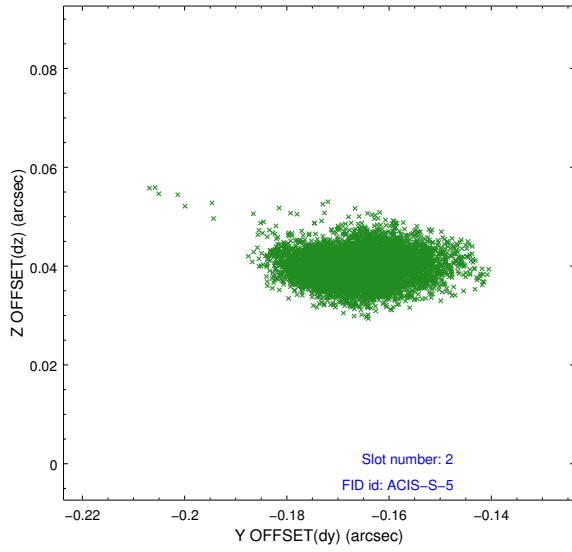
### 2.5.1 Slot 0



## 2.5.2 Slot 1



### 2.5.3 Slot 2



# A Summary

## A.1 Status

V&V Scientist	Jen Lauer
V&V Date (YYYY-MM-DD)	2012.03.23
V&V Edition	1
V&V Disposition and Status	OK
V&V Charge Time	27.0381999

## A.2 Comments