

# V&V Reference Report

## L2 ASCDS Version : 8.4.3

Observation 7018 - L2 Version 2  
Chandra X-Ray Center

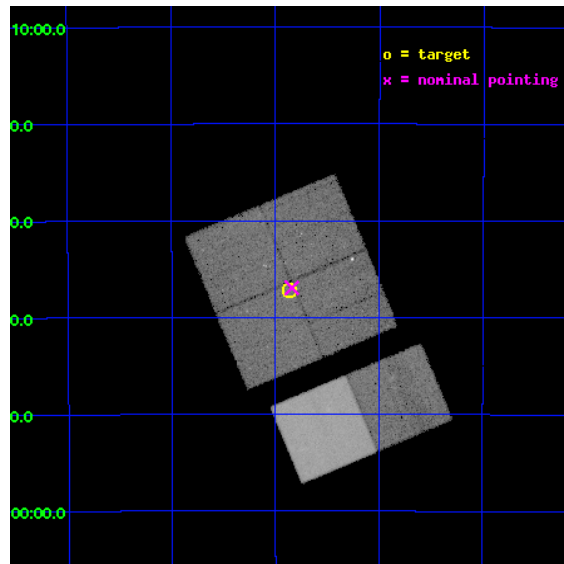
L2 Processing Date : Mar 30 2012

## Contents

<b>1</b>	<b>Front</b>	<b>2</b>
<b>2</b>	<b>OBI</b>	<b>3</b>
2.1	OBI . . . . .	3
2.1.1	Images . . . . .	3
2.1.2	Bias . . . . .	3
2.1.3	Parameters . . . . .	4
2.1.4	Events . . . . .	4
2.2	Compared Parameters . . . . .	5
2.3	Aspect . . . . .	6
2.4	Star Slots . . . . .	9
2.4.1	Slot 3 . . . . .	9
2.4.2	Slot 4 . . . . .	10
2.4.3	Slot 5 . . . . .	11
2.4.4	Slot 6 . . . . .	12
2.4.5	Slot 7 . . . . .	13
2.5	FID Slots . . . . .	14
2.5.1	Slot 0 . . . . .	14
2.5.2	Slot 1 . . . . .	15
2.5.3	Slot 2 . . . . .	16
<b>A</b>	<b>Summary</b>	<b>17</b>
A.1	Status . . . . .	17
A.2	Comments . . . . .	17

# 1 Front

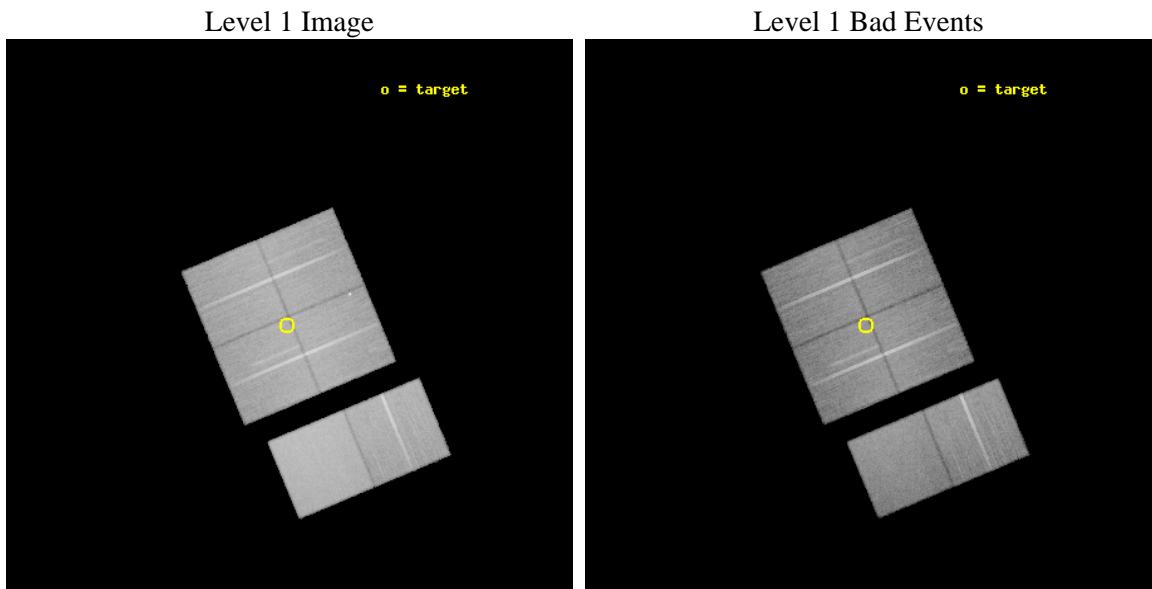
seq_num	900434	Sequence number
obs_id	7018	Observation id
title	The dark side of accretion: chasing type 2 QSOs	Proposal title
observer	Dr Fabrizio Fiore	Principal investigator
object	ELAIS-S1 C	Source name
dtycycle	0	&#160
cycle	P	events from which exps? Prim/Second/Both
ra_targ	8.965	Observer's specified target RA [deg]
dec_targ	-43.619028	Observer's specified target Dec [deg]
ra_nom	8.9605069183048	Nominal RA [deg]
dec_nom	-43.615686835094	Nominal Dec [deg]
roll_nom	157.31737757724	Nominal Roll [deg]
revision	2	Processing version of data
ontime	30124.717937171	Sum of GTIs [s]
livetime	29743.260619724	Livetime [s]
ontime0	30131.199887753	Sum of GTIs [s]
ontime1	30131.199887753	Sum of GTIs [s]
ontime2	30131.199887753	Sum of GTIs [s]
ontime3	30124.717937171	Sum of GTIs [s]
ontime6	30131.199887753	Sum of GTIs [s]
ontime7	30131.199887753	Sum of GTIs [s]
l2events	287530	Number of level 2 events



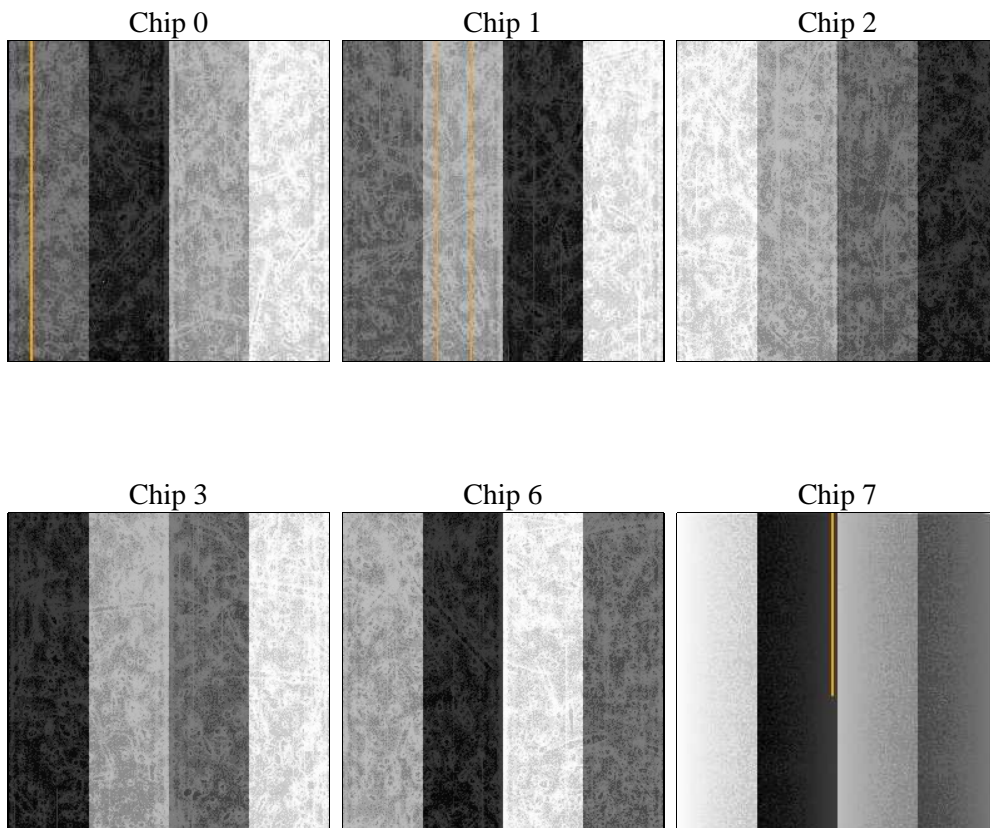
## 2 OBI

### 2.1 OBI

#### 2.1.1 Images



#### 2.1.2 Bias



### 2.1.3 Parameters

obi_num	0	Obi number	sched_exp_time	30000.000000	[s] Scheduled observation exposure time
ascdsver	8.4.3	Processing system revision	ontime	30124.717937171	Sum of GTIs [s]
caldbver	4.4.8	&#160	ontime0	30131.199887753	Sum of GTIs [s]
date	2012-03-30T18:55:35	Date and time of file creation	ontime1	30131.199887753	Sum of GTIs [s]
revision	2	Processing version of data	ontime2	30131.199887753	Sum of GTIs [s]
			ontime3	30124.717937171	Sum of GTIs [s]
			ontime6	30131.199887753	Sum of GTIs [s]
			ontime7	30131.199887753	Sum of GTIs [s]
			l1events	1670878	Number of level 1 events

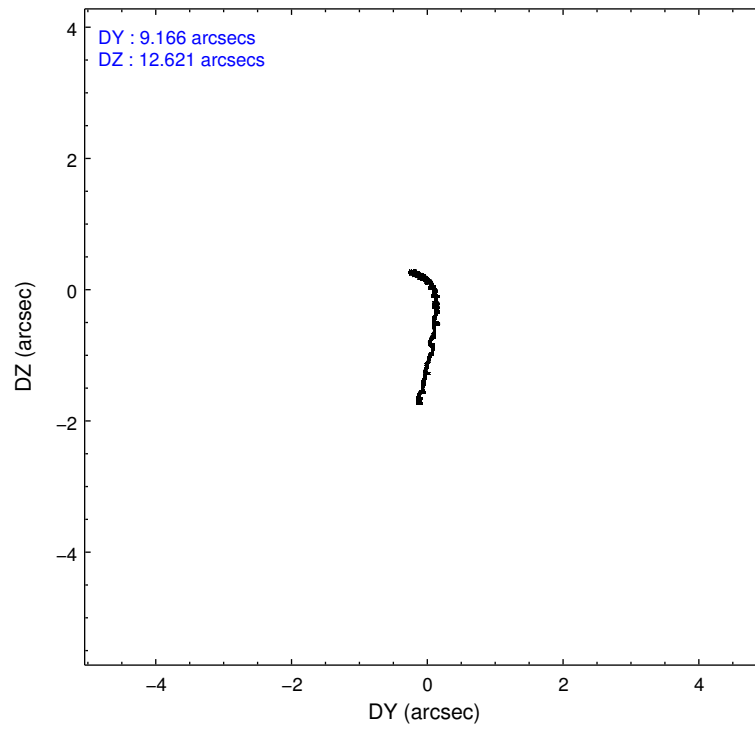
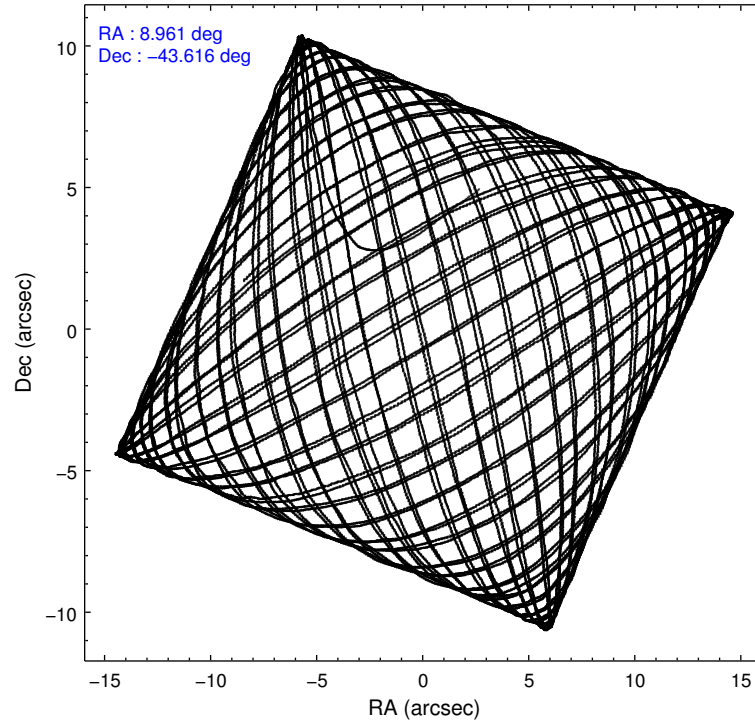
### 2.1.4 Events

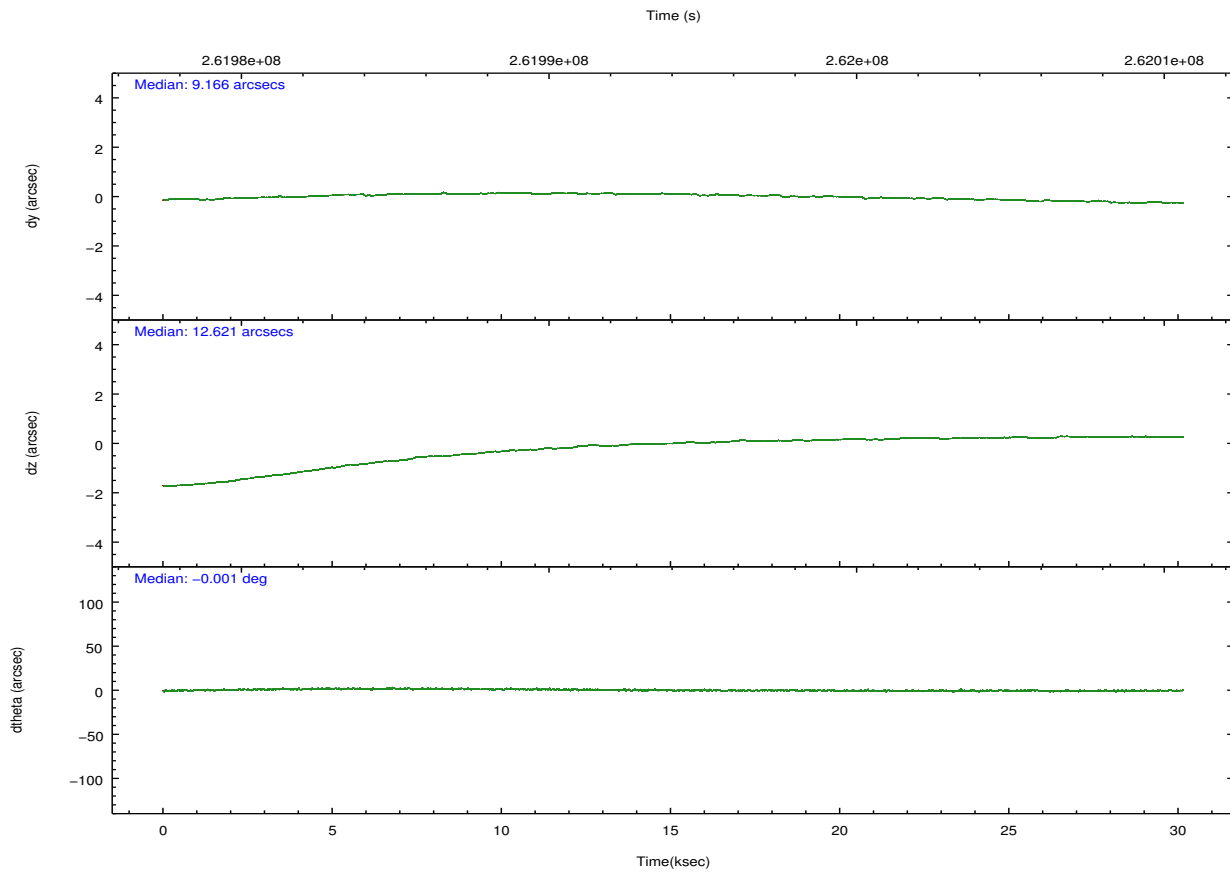
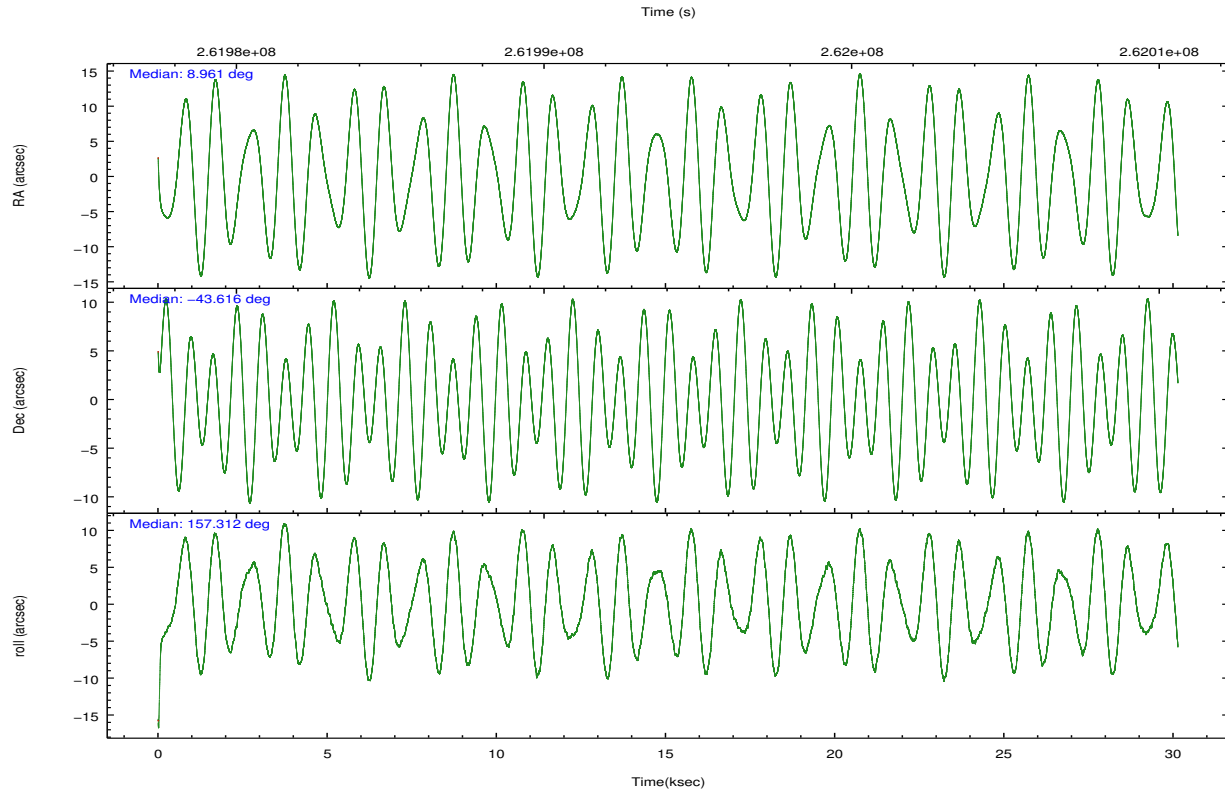
	ccd 0	ccd 1	ccd 2	ccd 3	ccd 6	ccd 7		ccd 0	ccd 1	ccd 2	ccd 3	ccd 6	ccd 7
level 1 events	245611	247673	271306	260802	277769	367717	grade 0 events	13784	13085	15499	13648	12564	13431
rejected events	213582	214062	238204	229808	245744	215995		5%	5%	5%	5%	4%	3%
rejected %	86%	86%	87%	88%	88%	58%	grade 1 events	177	129	173	188	152	373
								0%	0%	0%	0%	0%	0%
							grade 2 events	7207	7638	6803	6194	7028	30371
								2%	3%	2%	2%	2%	8%
							grade 3 events	3045	3294	2935	3102	3129	13521
								1%	1%	1%	1%	1%	3%
							grade 4 events	2899	3229	3026	2961	2948	13398
								1%	1%	1%	1%	1%	3%
							grade 5 events	10460	11735	10353	12336	12803	34961
								4%	4%	3%	4%	4%	9%
							grade 6 events	5397	6662	5180	5414	6659	82393
								2%	2%	1%	2%	2%	22%
							grade 7 events	202642	201901	227337	216959	232486	179269
								82%	81%	83%	83%	83%	48%

## 2.2 Compared Parameters

Parameter	Planned	Actual	Parameter	Planned	Actual
Instrument	ACIS	ACIS	Obspar format version number	7	7
Detector	ACIS-012367	ACIS-012367	Obspar file type	PREDICTED	ACTUAL
Grating	NONE	NONE	Obspar update status	NONE	UPDATED
Data mode	FAINT	FAINT	Number of optional ACIS chips dropped	0	0
Observation mode	POINTING	POINTING	On-chip summing requested	N	N
[deg] Pointing RA	8.998022	8.960506918304816	Subarray requested	NONE	NONE
[deg] Pointing Dec	-43.612105	-43.61568683509355	Alternating exposures requested	N	N
[deg] Pointing Roll	157.134581	157.3173775772428	[s] Primary exposure time	0.000000	3.2
[mm] SIM focus pos	-0.782348	-0.7809083437167272			
[mm] SIM defocus	0	0.001439871863259334			
[mm] SIM translation stage pos	-233.592463	-233.5874344608287			
[mm] SIM translation stage offset	0	-0.005018542100998502			
[s] Observation start time (MET)	261979105.184000	261977916.97067			
Observation start date	2006-04-21T03:57:20	2006-04-21T03:38:36			
[s] Observation end time (MET)	262009105.184000	262009668.90966			
Observation end date	2006-04-21T12:17:20	2006-04-21T12:27:48			
Read mode	TIMED	TIMED			

## 2.3 Aspect



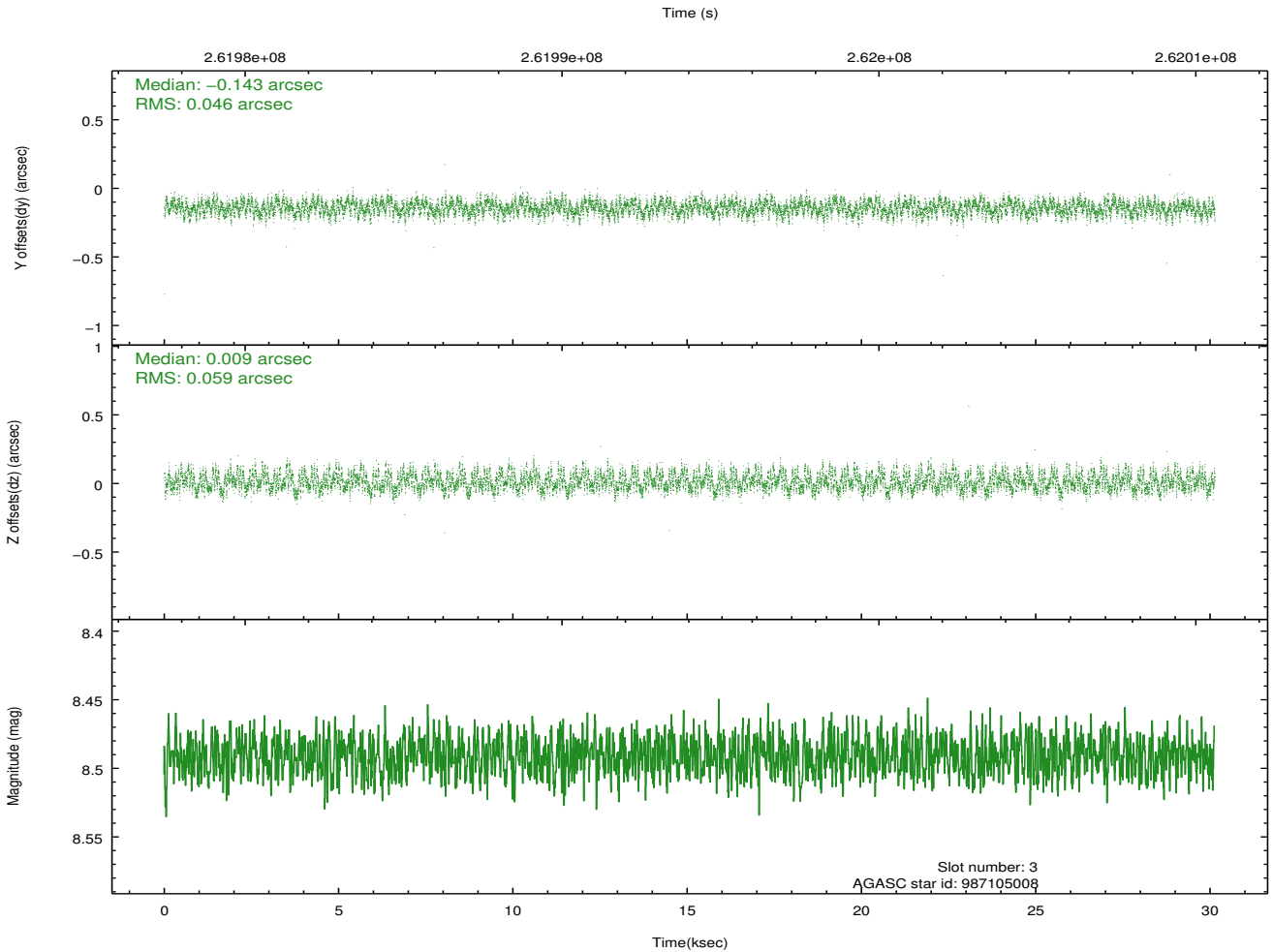
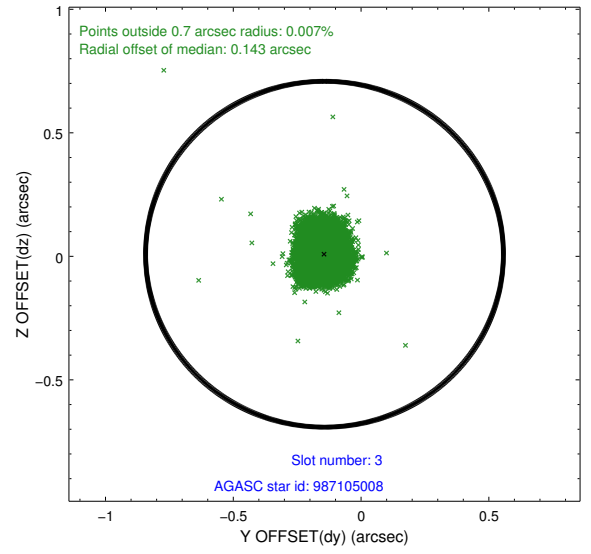
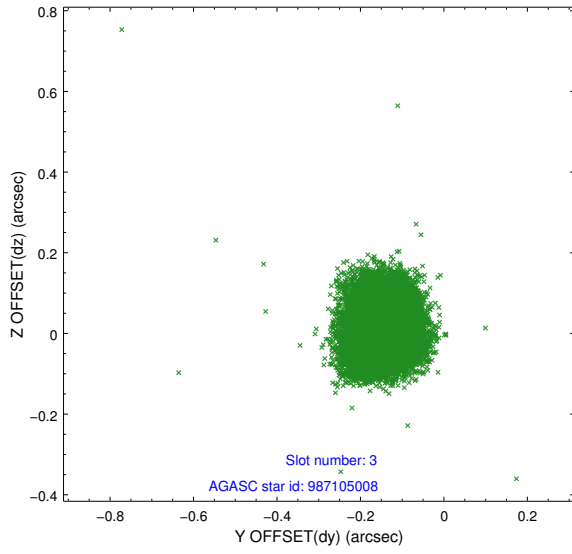


### Slot Statistics

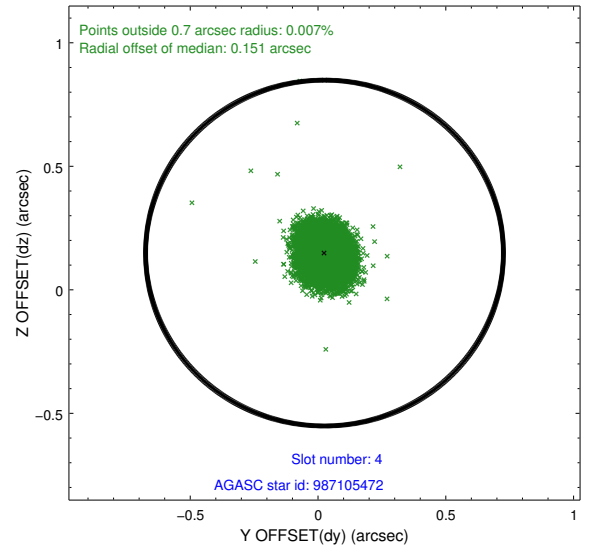
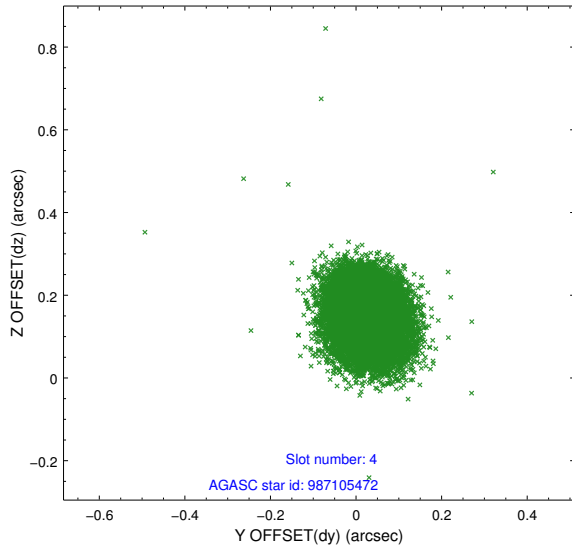
slot	status	id	mag	n_pts	med_dy	med_dz	dr1	dr2	ra	dec	mean_y	mean_z
0	FID	ACIS-I-1	7.24	7351	0.058	-0.002	0.021	0.041	0.000000	0.000000	930.51	-835.91
1	FID	ACIS-I-5	7.23	7351	-0.214	0.067	0.010	0.016	0.000000	0.000000	-1817.80	1061.66
2	FID	ACIS-I-6	7.25	7352	0.063	0.005	0.016	0.049	0.000000	0.000000	396.02	1706.16
3	GUIDE	987105008	8.49	14701	-0.143	0.009	0.080	0.124	8.512368	-44.078521	503.15	2038.92
4	GUIDE	987105472	8.93	14682	0.025	0.149	0.076	0.123	9.076108	-43.240154	332.39	-1312.20
5	GUIDE	987110008	8.87	14699	0.225	-0.111	0.087	0.139	9.369216	-44.407837	-1993.59	2270.51
6	GUIDE	987104432	8.78	14694	-0.156	-0.234	0.088	0.135	8.127720	-44.065974	1434.43	2391.55
7	GUIDE	987107696	7.58	14702	0.054	0.188	0.060	0.100	9.721255	-43.295694	-1306.22	-1777.74

## 2.4 Star Slots

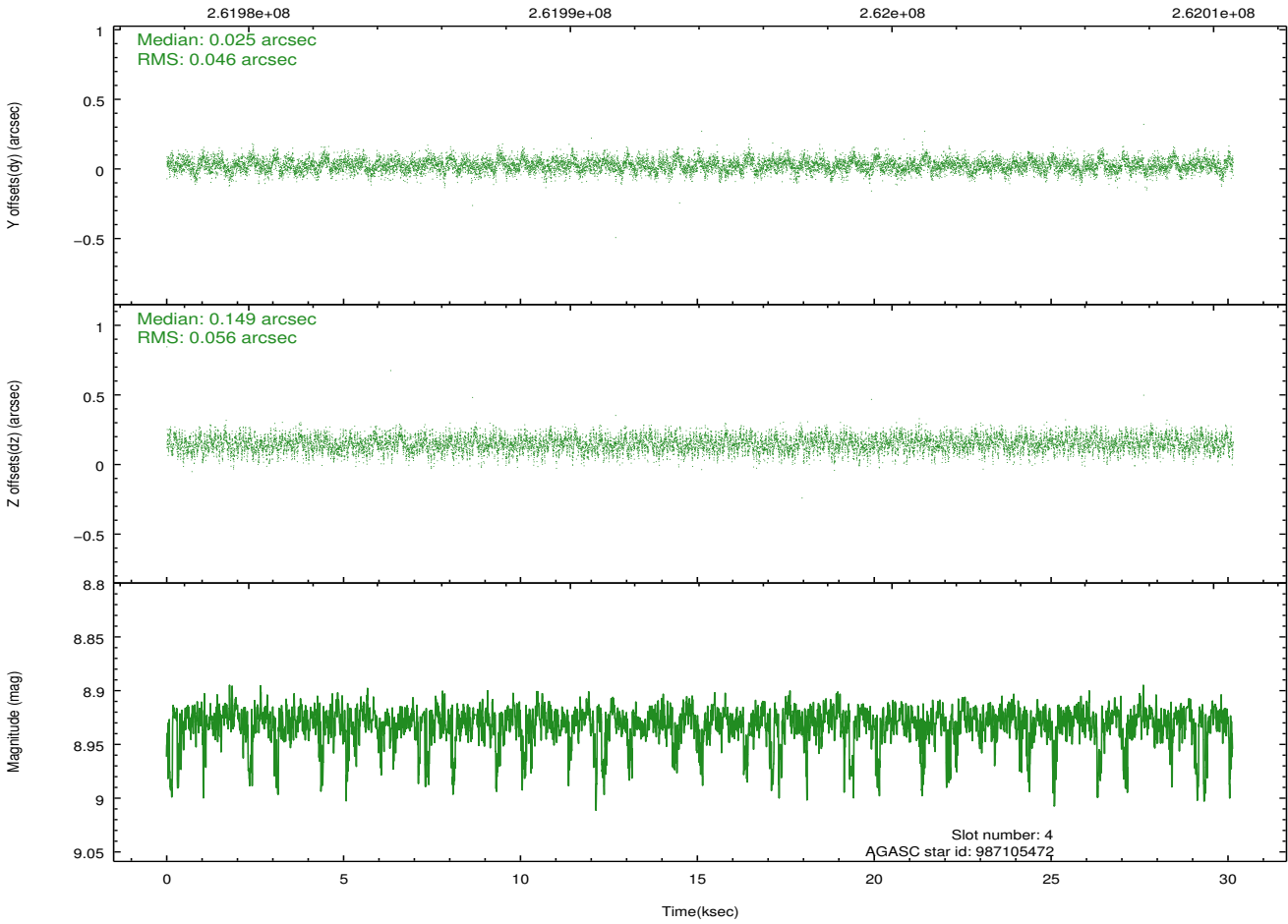
### 2.4.1 Slot 3



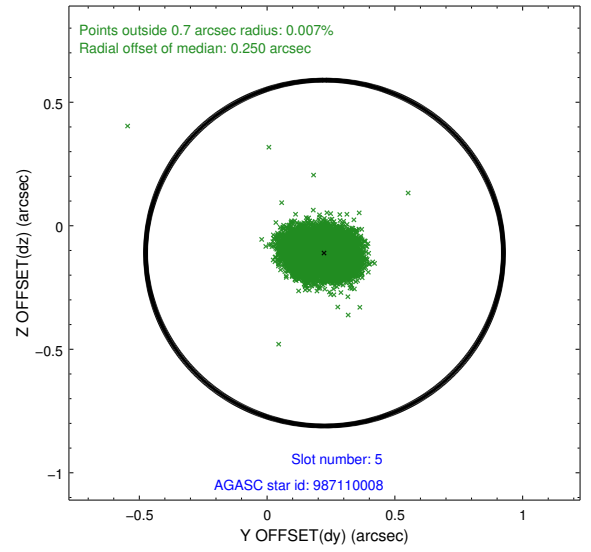
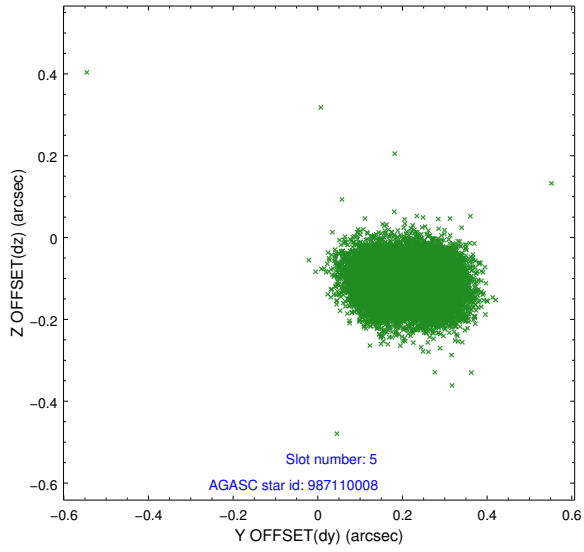
### 2.4.2 Slot 4



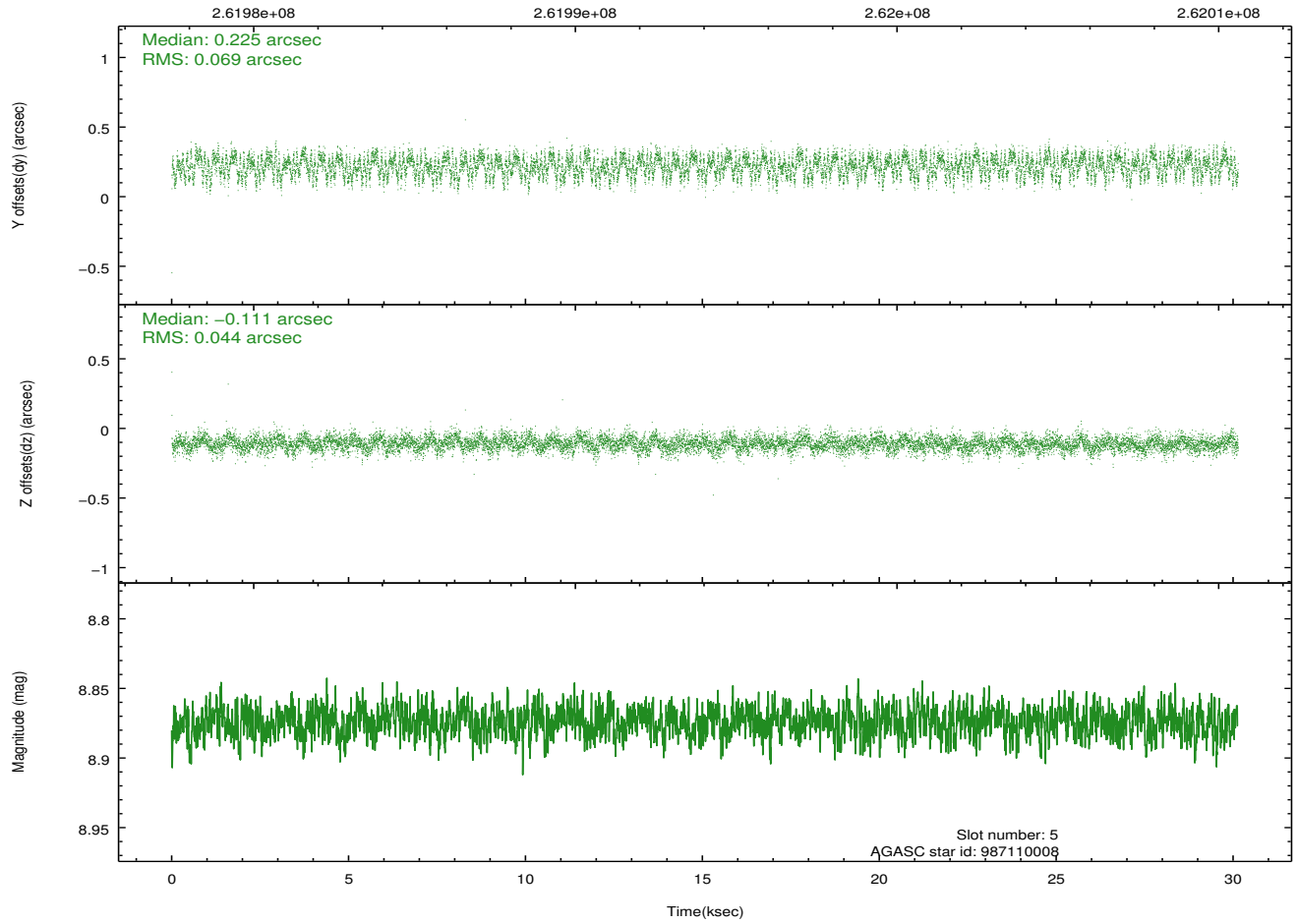
Time (s)



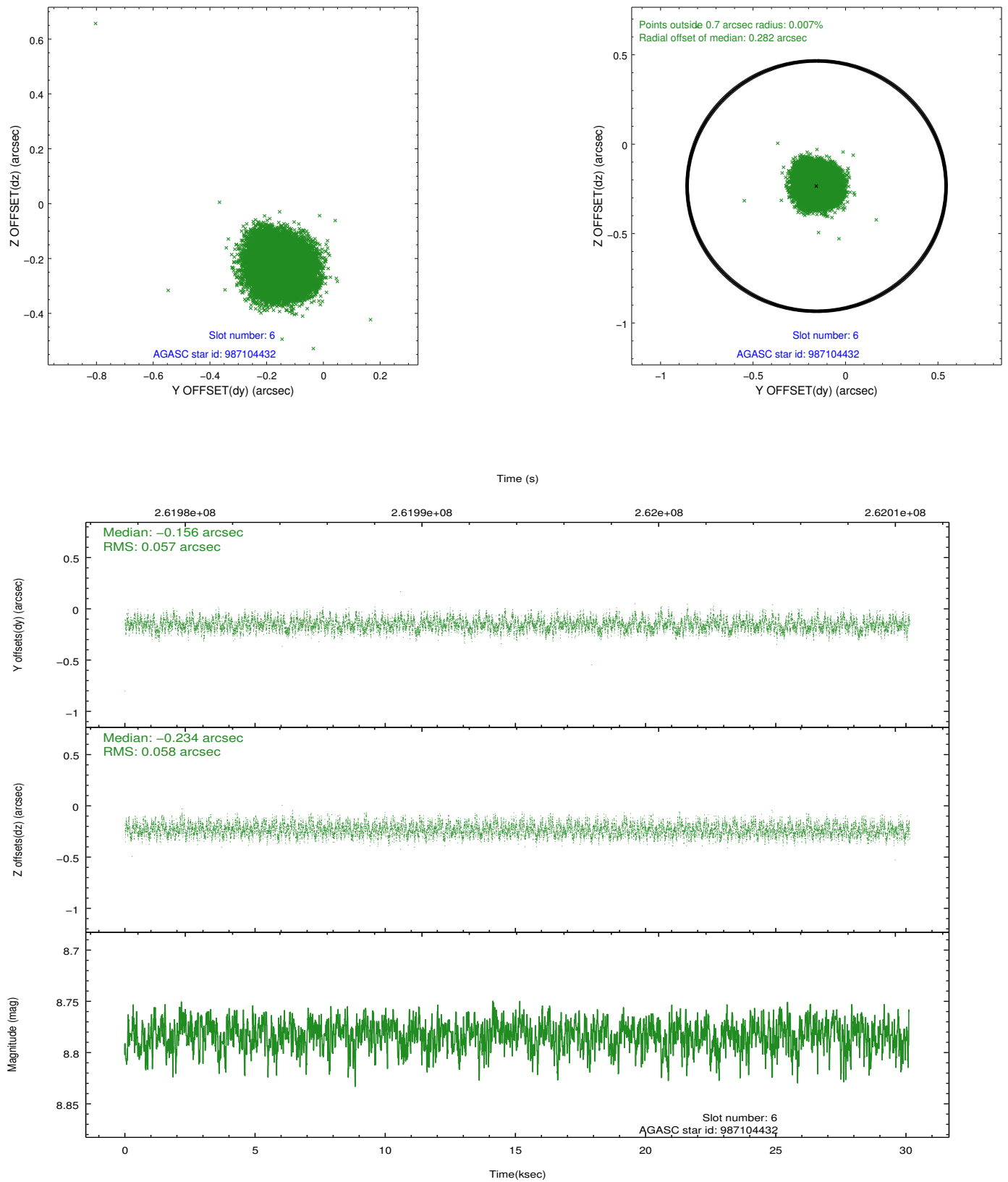
### 2.4.3 Slot 5



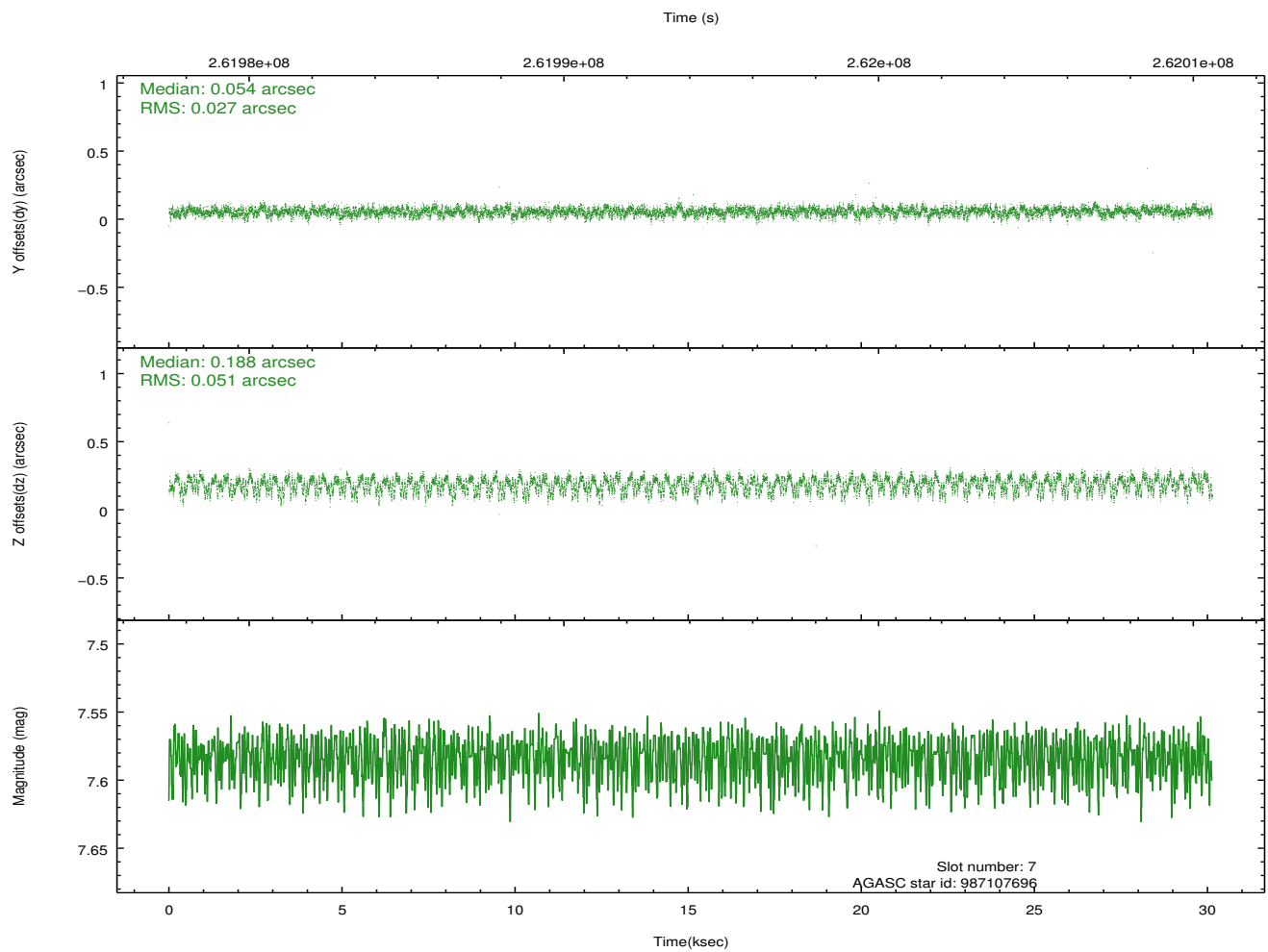
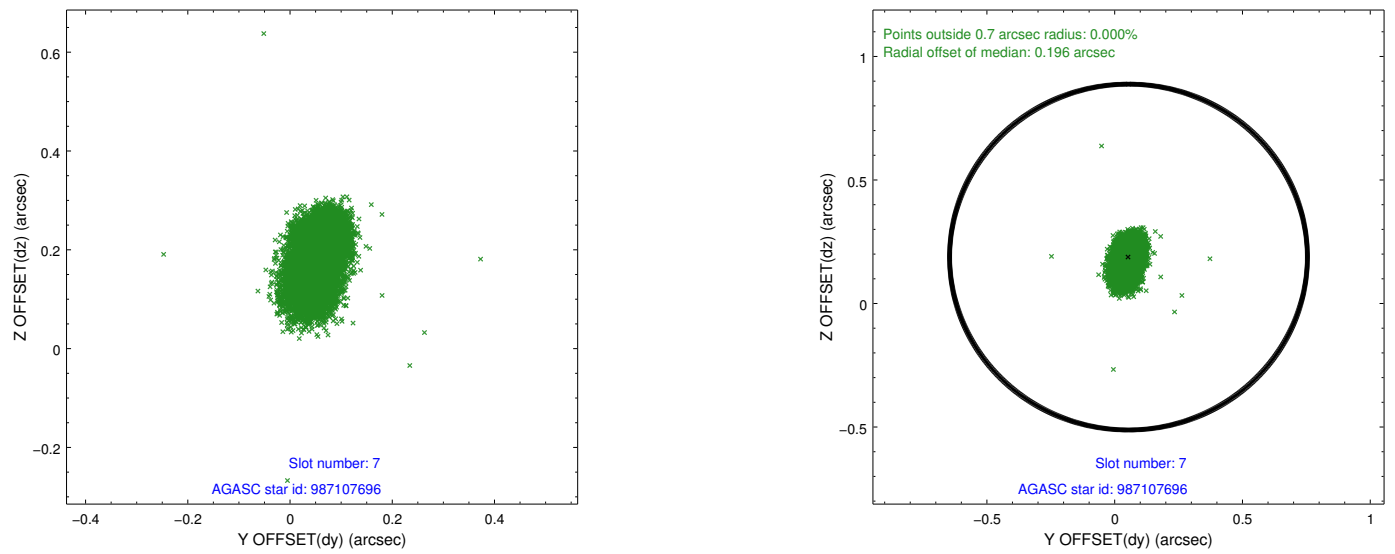
Time (s)



## 2.4.4 Slot 6

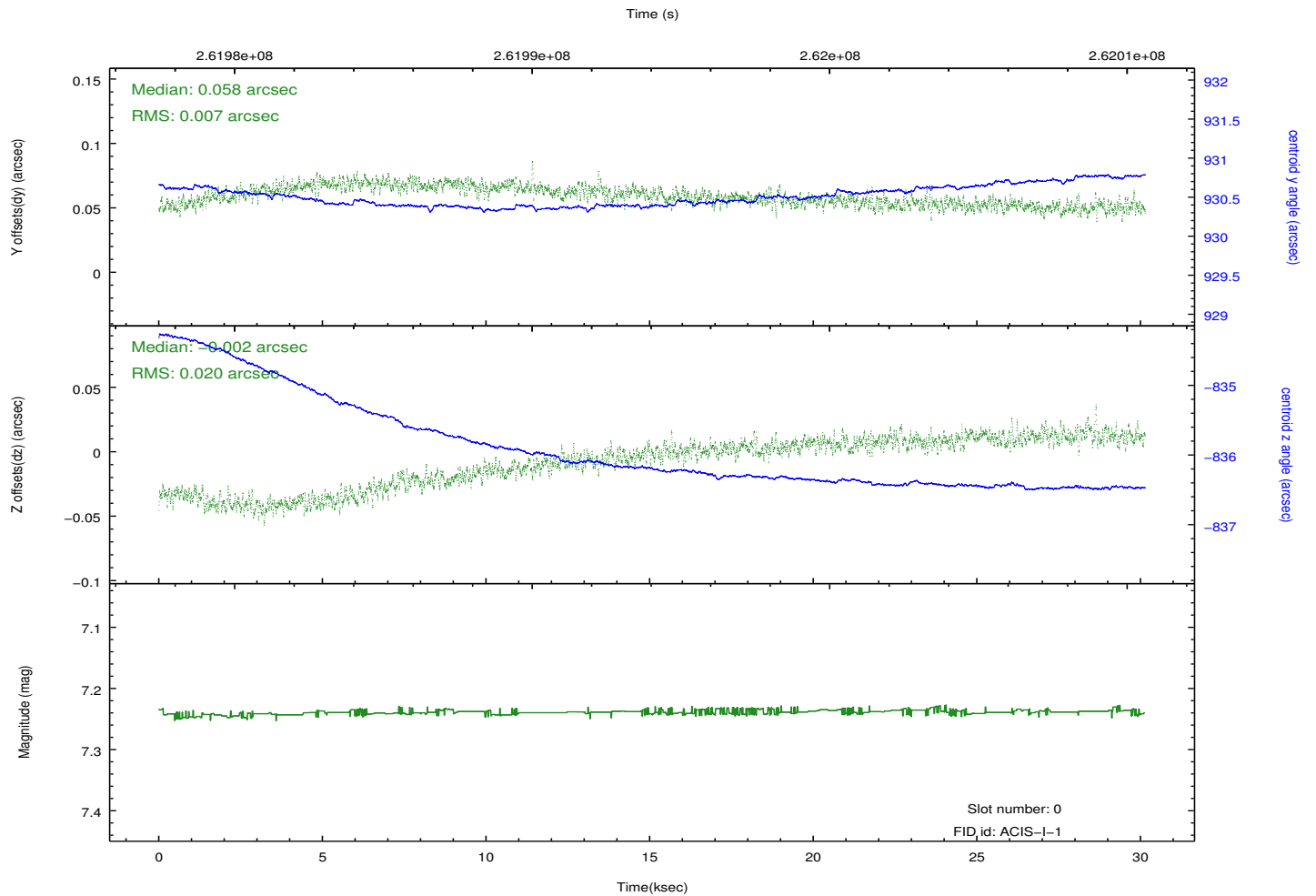
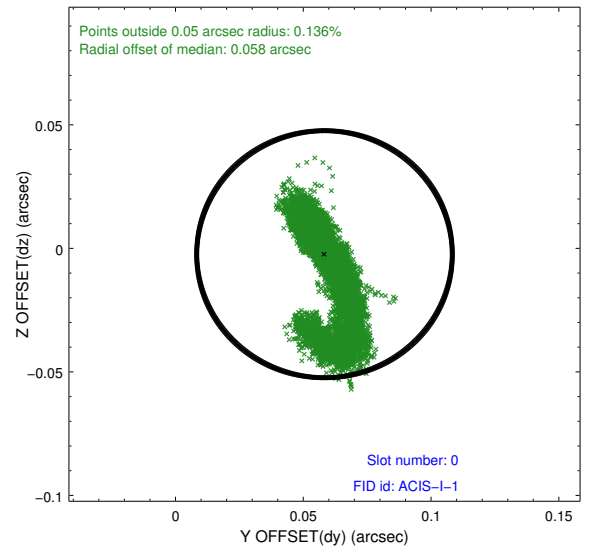
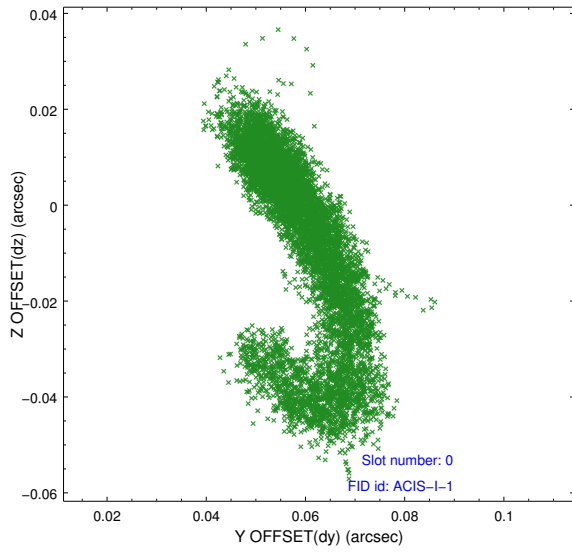


## 2.4.5 Slot 7

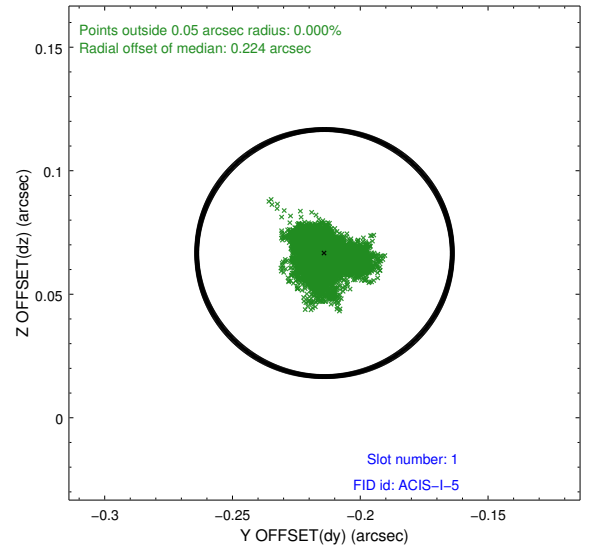
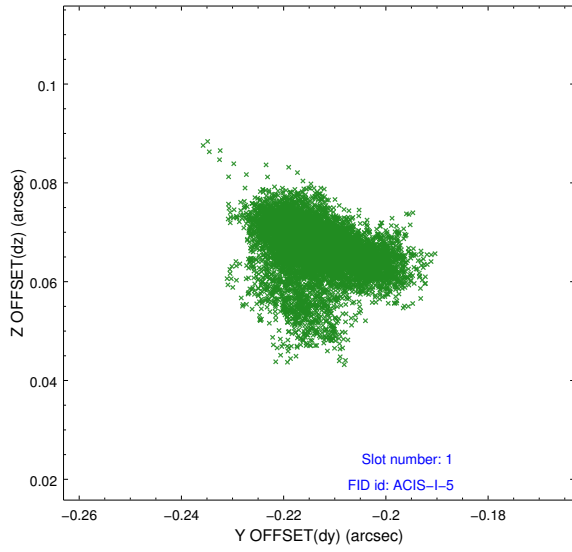


## 2.5 FID Slots

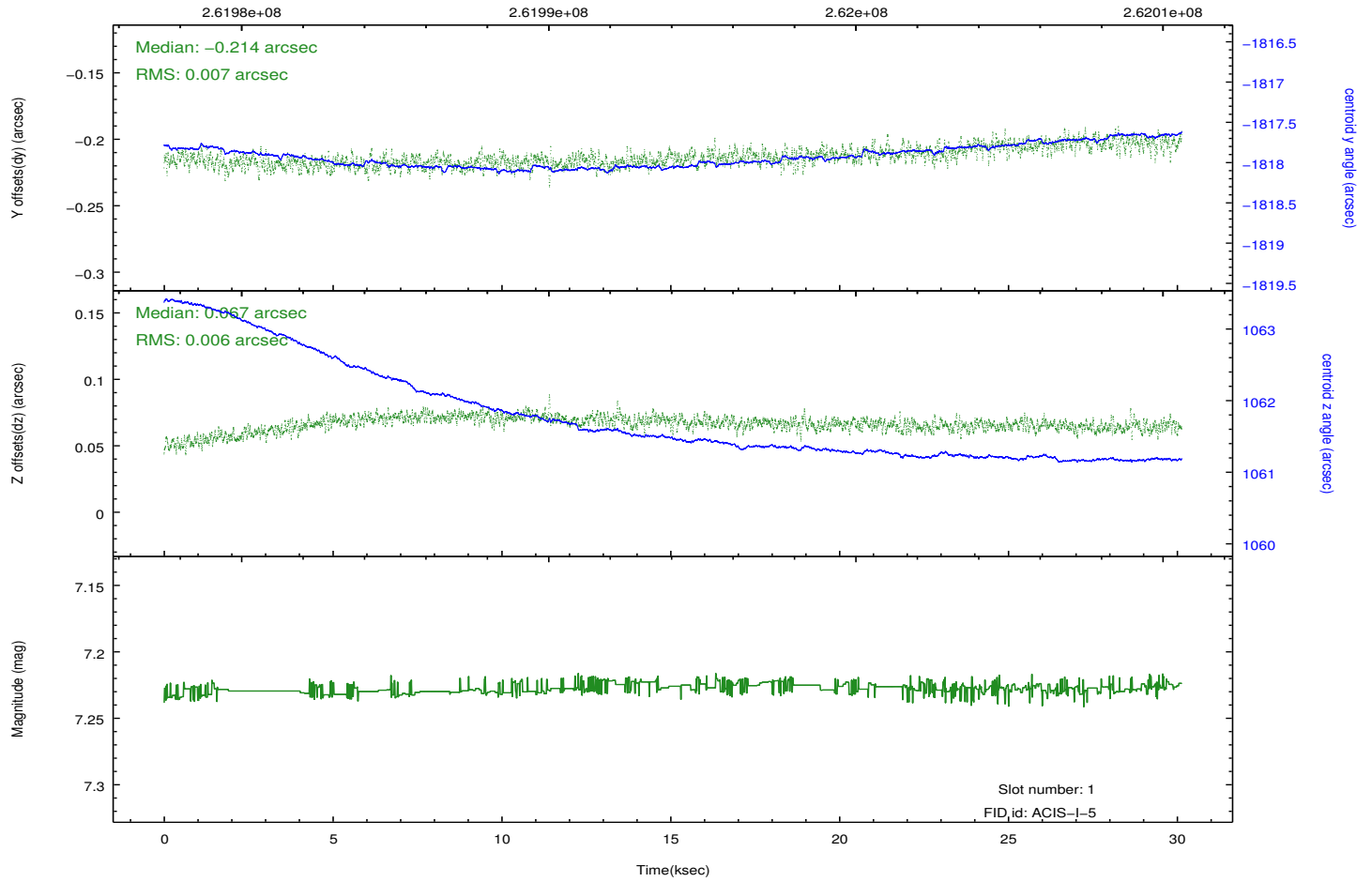
### 2.5.1 Slot 0



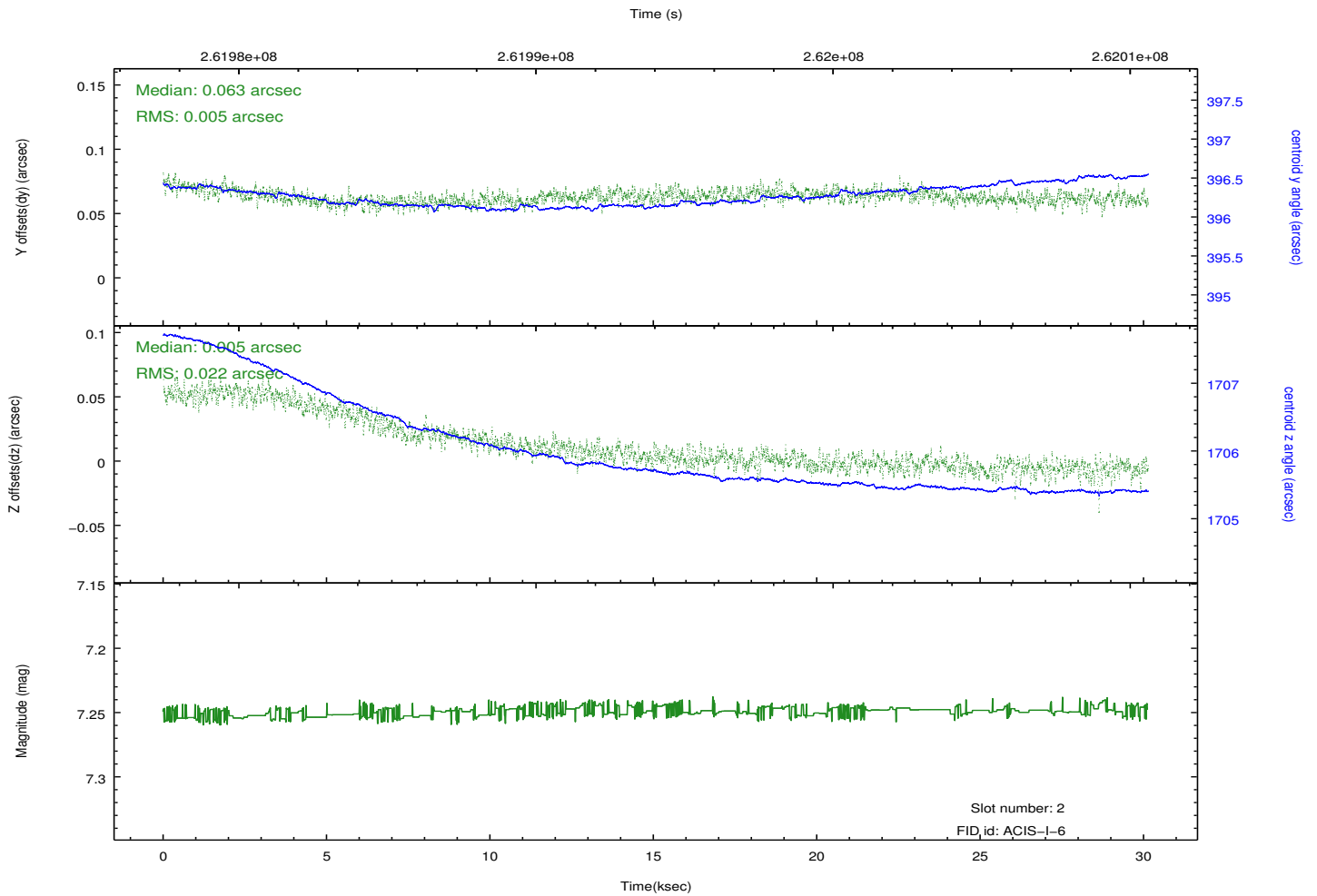
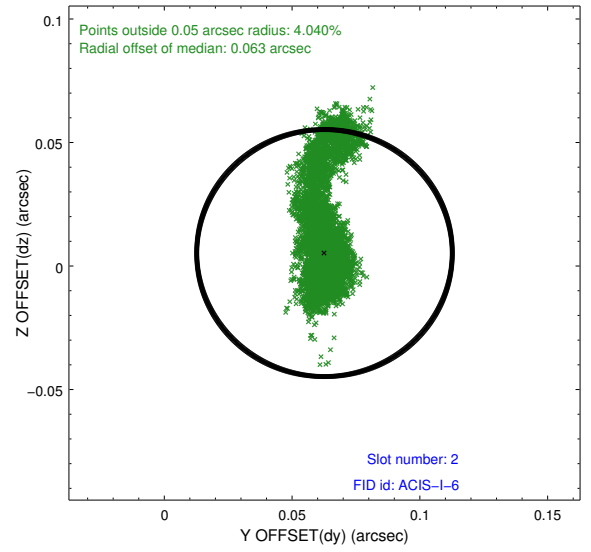
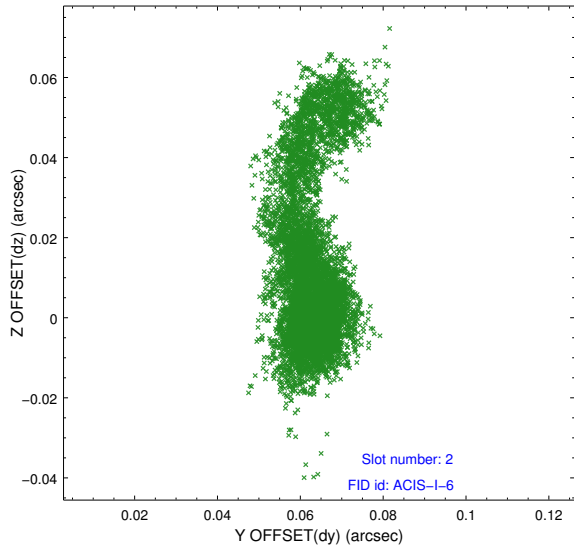
## 2.5.2 Slot 1



Time (s)



### 2.5.3 Slot 2



# A Summary

## A.1 Status

V&V Scientist	Jen Lauer
V&V Date (YYYY-MM-DD)	2012.04.02
V&V Edition	1
V&V Disposition and Status	OK
V&V Charge Time	30.1247179

## A.2 Comments