

V&V Reference Report

L2 ASCDS Version : 8.4.3

Observation 7248 - L2 Version 2
Chandra X-Ray Center

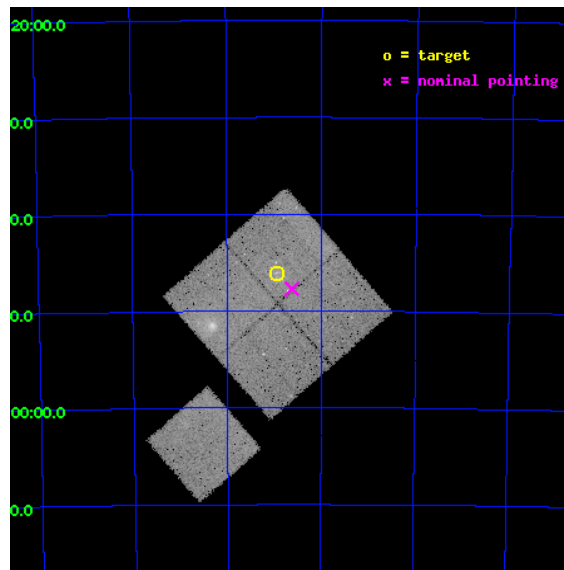
L2 Processing Date : Mar 20 2012

Contents

1	Front	2
2	OBI	3
2.1	OBI	3
2.1.1	Images	3
2.1.2	Bias	3
2.1.3	Parameters	4
2.1.4	Events	4
2.2	Compared Parameters	5
2.3	Aspect	6
2.4	Star Slots	9
2.4.1	Slot 3	9
2.4.2	Slot 4	10
2.4.3	Slot 5	11
2.4.4	Slot 6	12
2.4.5	Slot 7	13
2.5	FID Slots	14
2.5.1	Slot 0	14
2.5.2	Slot 1	15
2.5.3	Slot 2	16
A	Summary	17
A.1	Status	17
A.2	Comments	17

1 Front

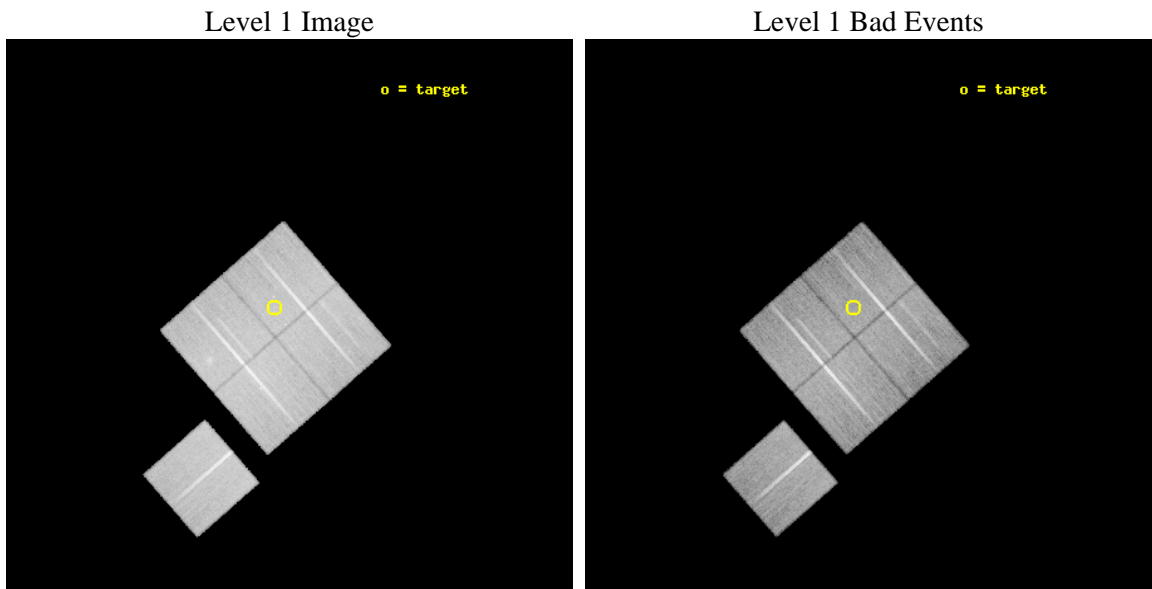
seq_num	600497	Sequence number
obs_id	7248	Observation id
title	Gas-Dynamics of a High Speed Encounter: The Interaction of NGC 6872 with the Pavo Group	Proposal title
observer	Dr. Marie Machacek	Principal investigator
object	NGC6872	Source name
dtcycle	0	
cycle	P	events from which exps? Prim/Second/Both
ra_targ	304.235417	Observer's specified target RA [deg]
dec_targ	-70.76825	Observer's specified target Dec [deg]
ra_nom	304.15585394356	Nominal RA [deg]
dec_nom	-70.795322209554	Nominal Dec [deg]
roll_nom	228.83355125782	Nominal Roll [deg]
revision	2	Processing version of data
ontime	35125.93608135	Sum of GTIs [s]
livetime	34666.989867109	Livetime [s]
ontime0	35135.358972162	Sum of GTIs [s]
ontime1	35125.93608135	Sum of GTIs [s]
ontime2	35132.217971951	Sum of GTIs [s]
ontime3	35125.936051339	Sum of GTIs [s]
ontime6	35129.077031612	Sum of GTIs [s]
l2events	111582	Number of level 2 events



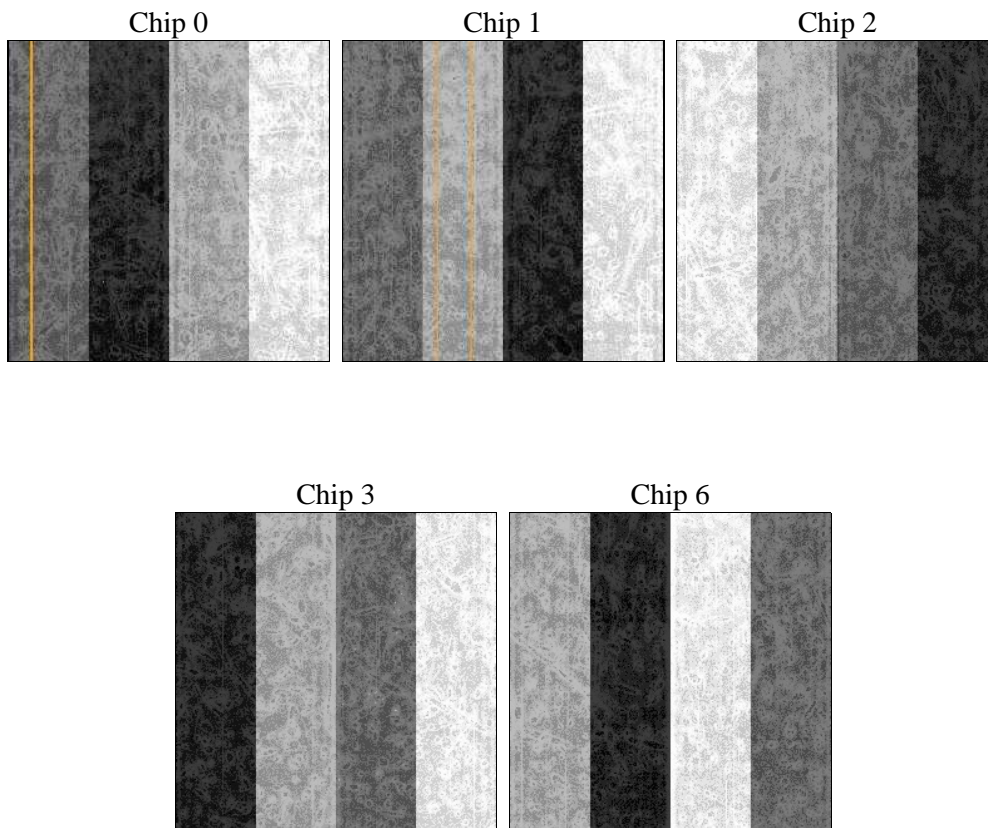
2 OBI

2.1 OBI

2.1.1 Images



2.1.2 Bias



2.1.3 Parameters

obi_num	0	Obi number	sched_exp_time	35000.000000	[s] Scheduled observation exposure time
ascdsver	8.4.3	Processing system revision	ontime	35125.93608135	Sum of GTIs [s]
caldbver	4.4.8	 	ontime0	35135.358972162	Sum of GTIs [s]
date	2012-03-20T03:12:46	Date and time of file creation	ontime1	35125.93608135	Sum of GTIs [s]
revision	2	Processing version of data	ontime2	35132.217971951	Sum of GTIs [s]
			ontime3	35125.936051339	Sum of GTIs [s]
			ontime6	35129.077031612	Sum of GTIs [s]
			l1events	1228587	Number of level 1 events

2.1.4 Events

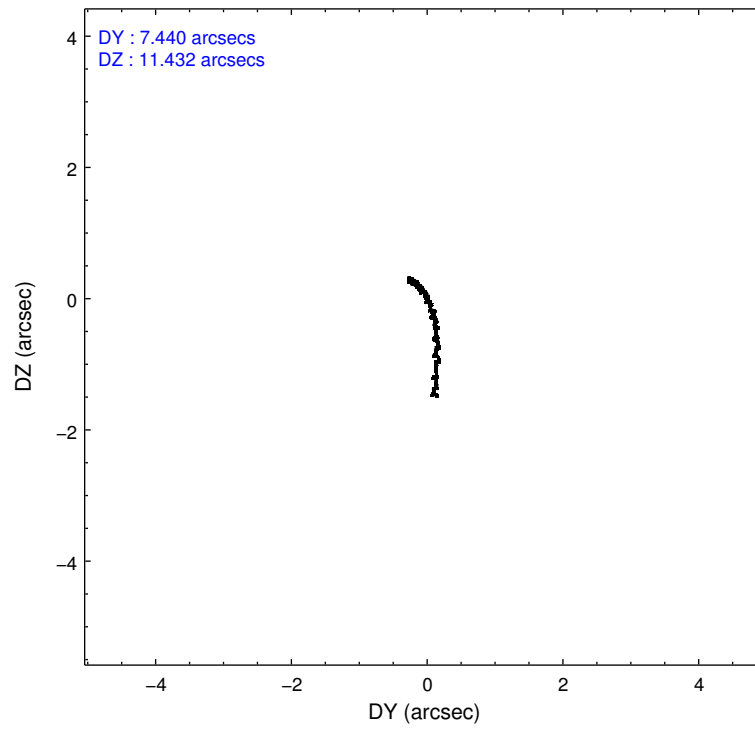
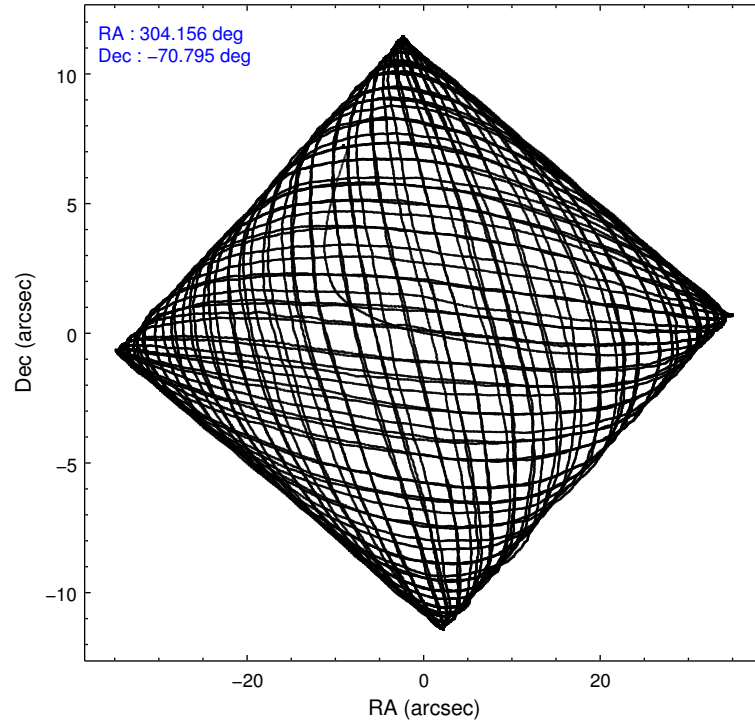
	ccd 0	ccd 1	ccd 2	ccd 3	ccd 6
level 1 events	234690	231471	261379	254975	246072
rejected events	210223	201424	236668	226275	221158
rejected %	89%	87%	90%	88%	89%

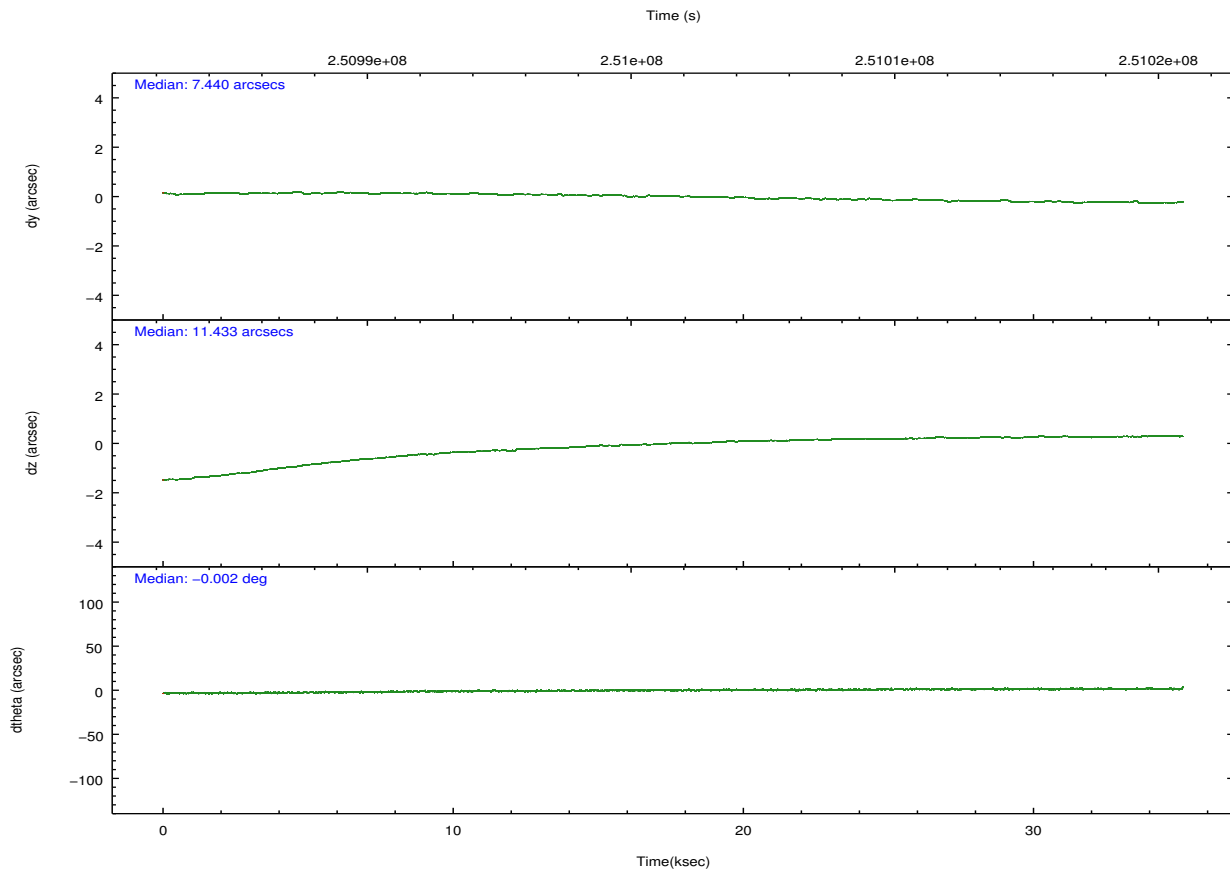
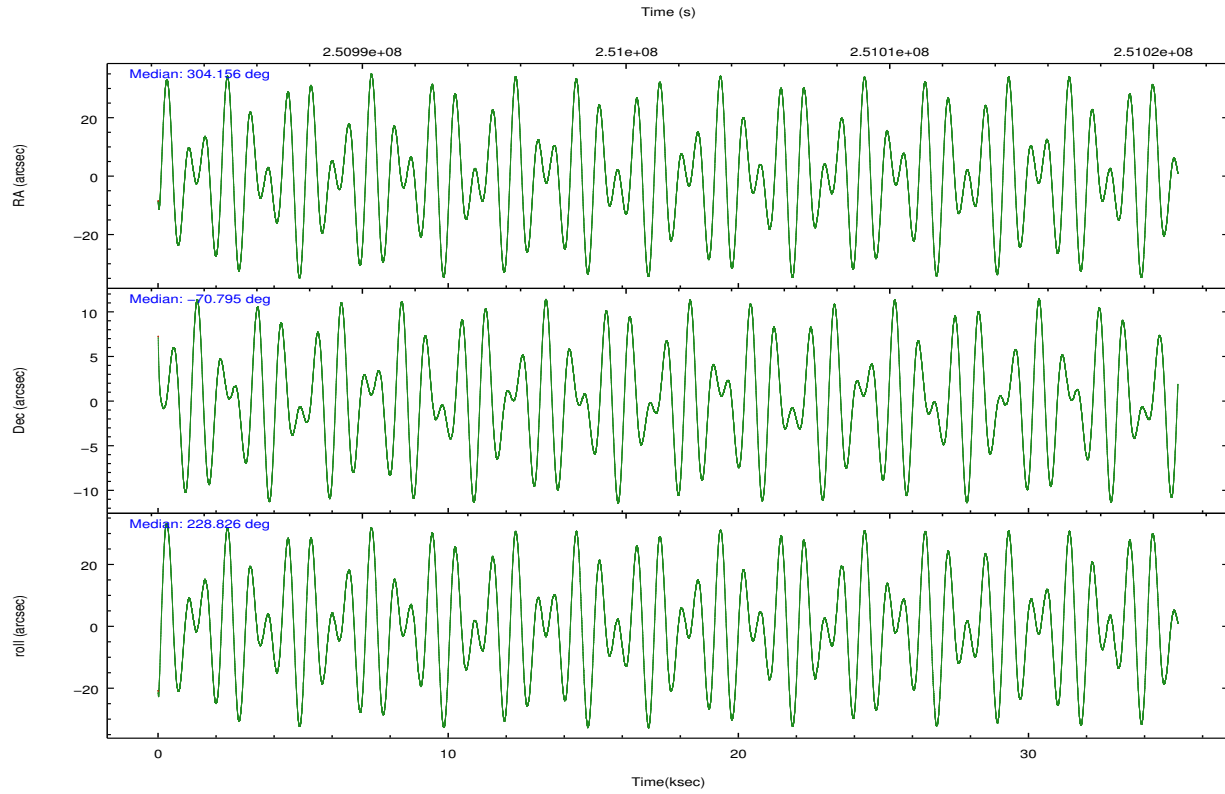
	ccd 0	ccd 1	ccd 2	ccd 3	ccd 6
grade 0 events	9422	12635	9870	13623	9263
	4%	5%	3%	5%	3%
grade 1 events	128	110	142	169	116
	0%	0%	0%	0%	0%
grade 2 events	5814	6505	5700	5437	5348
	2%	2%	2%	2%	2%
grade 3 events	2677	2986	2592	2733	2813
	1%	1%	0%	1%	1%
grade 4 events	2536	2991	2709	2702	2696
	1%	1%	1%	1%	1%
grade 5 events	8314	9298	7688	9672	9740
	3%	4%	2%	3%	3%
grade 6 events	4439	5453	4297	4641	5238
	1%	2%	1%	1%	2%
grade 7 events	201360	191493	228381	215998	210858
	85%	82%	87%	84%	85%

2.2 Compared Parameters

Parameter	Planned	Actual	Parameter	Planned	Actual
Instrument	ACIS	ACIS	Obspar format version number	7	7
Detector	ACIS-01236	ACIS-01236	Obspar file type	PREDICTED	ACTUAL
Grating	NONE	NONE	Obspar update status	NONE	UPDATED
Data mode	VFAINT	VFAINT	Number of optional ACIS chips dropped	0	0
Observation mode	POINTING	POINTING	On-chip summing requested	N	N
[deg] Pointing RA	304.171632	304.1558539435586	Subarray requested	NONE	NONE
[deg] Pointing Dec	-70.768408	-70.79532220955429	Alternating exposures requested	N	N
[deg] Pointing Roll	228.639773	228.833551257822	[s] Primary exposure time	0.000000	3.1
[mm] SIM focus pos	-0.782348	-0.7809083437167272			
[mm] SIM defocus	0	0.001439871863259334			
[mm] SIM translation stage pos	-241.592463	-241.5930143809957			
[mm] SIM translation stage offset	8	8.000561378066038			
[s] Observation start time (MET)	250984166.184000	250982876.76003			
Observation start date	2005-12-14T21:48:22	2005-12-14T21:27:56			
[s] Observation end time (MET)	251019166.184000	251020068.88675			
Observation end date	2005-12-15T07:31:42	2005-12-15T07:47:48			
Read mode	TIMED	TIMED			

2.3 Aspect





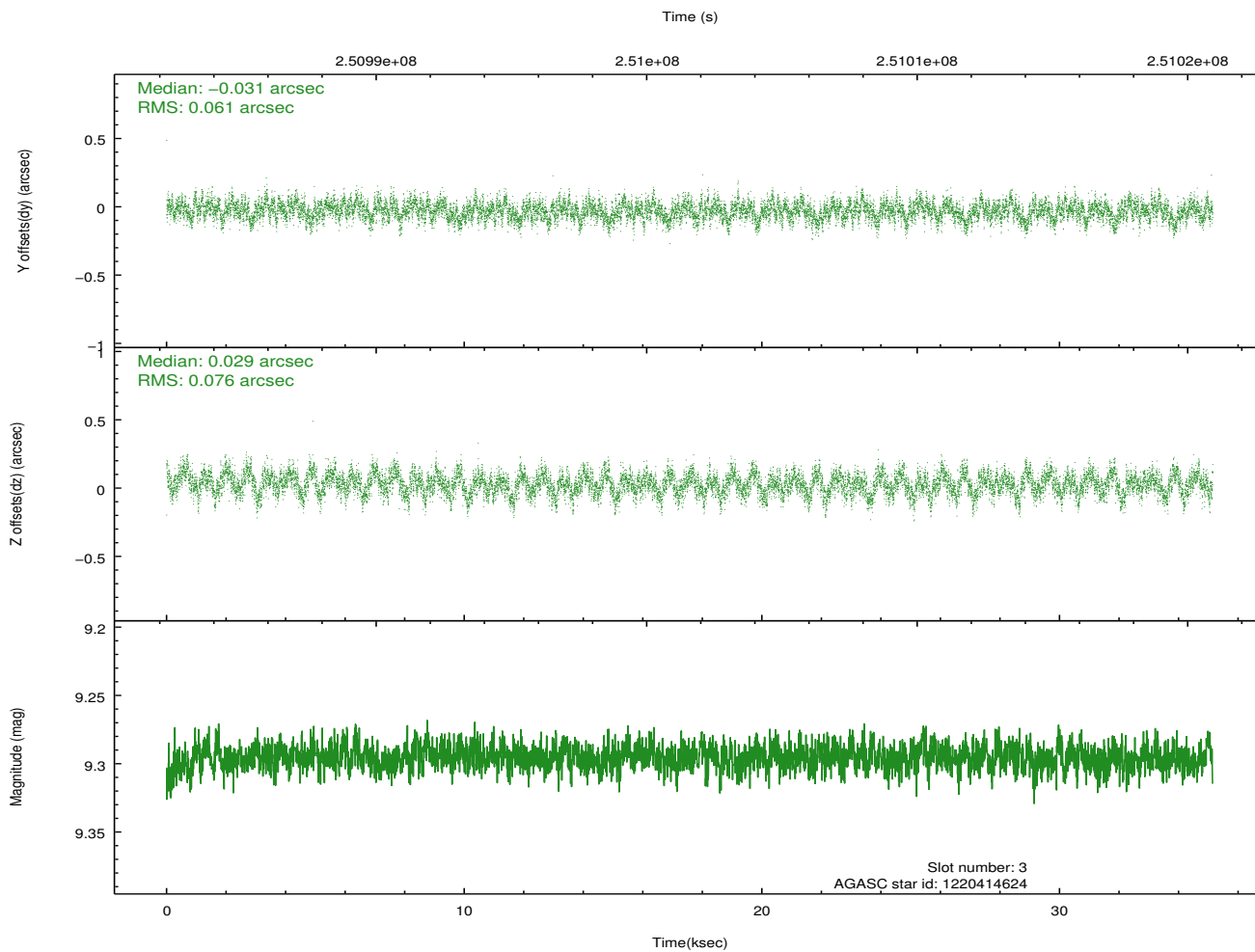
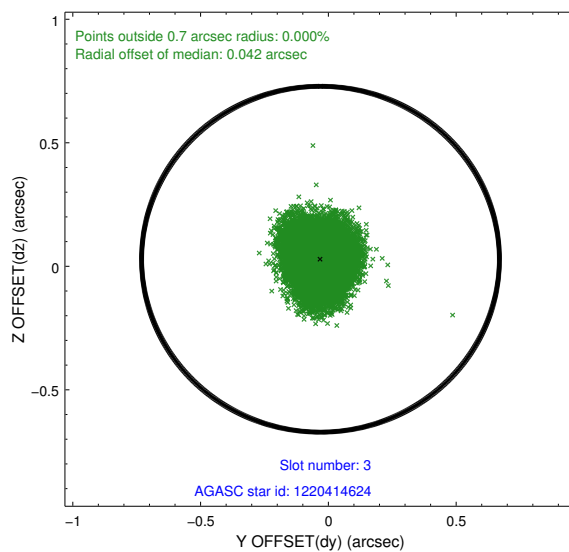
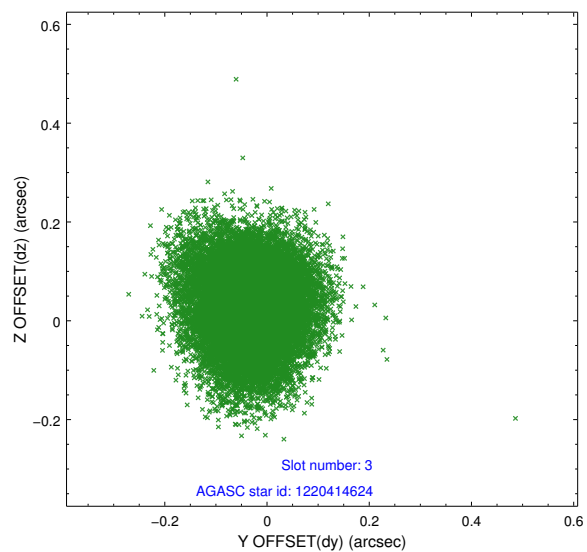
Slot Statistics

slot	status	id	mag	n_pts	med_dy	med_dz	dr1	dr2	ra	dec	mean_y	mean_z
0	FID	ACIS-I-1	7.28	8573	-0.016	0.011	0.014	0.067	0.000000	0.000000	932.38	-670.26
1	FID	ACIS-I-5	7.24	8572	-0.103	0.017	0.010	0.024	0.000000	0.000000	-1815.80	1227.20
2	FID	ACIS-I-6	7.23	8570	0.028	0.040	0.012	0.049	0.000000	0.000000	397.91	1871.78
3	GUIDE	1220414624	9.30	17133	-0.031	0.029	0.104	0.166	304.430463	-70.145362	-1891.74	-1244.06
4	GUIDE	1220417792	8.66	17139	0.032	-0.031	0.100	0.168	301.715364	-70.796240	2041.31	-2076.78
5	GUIDE	1220415312	9.66	17126	-0.088	0.067	0.118	0.191	305.075864	-71.229088	558.81	1887.40
6	GUIDE	1220547248	9.83	17125	-0.002	-0.053	0.153	0.238	306.006962	-71.080661	-547.46	2372.62
7	GUIDE	1220552432	9.66	17106	0.083	-0.023	0.271	0.390	306.817733	-70.729720	-2129.93	2312.35

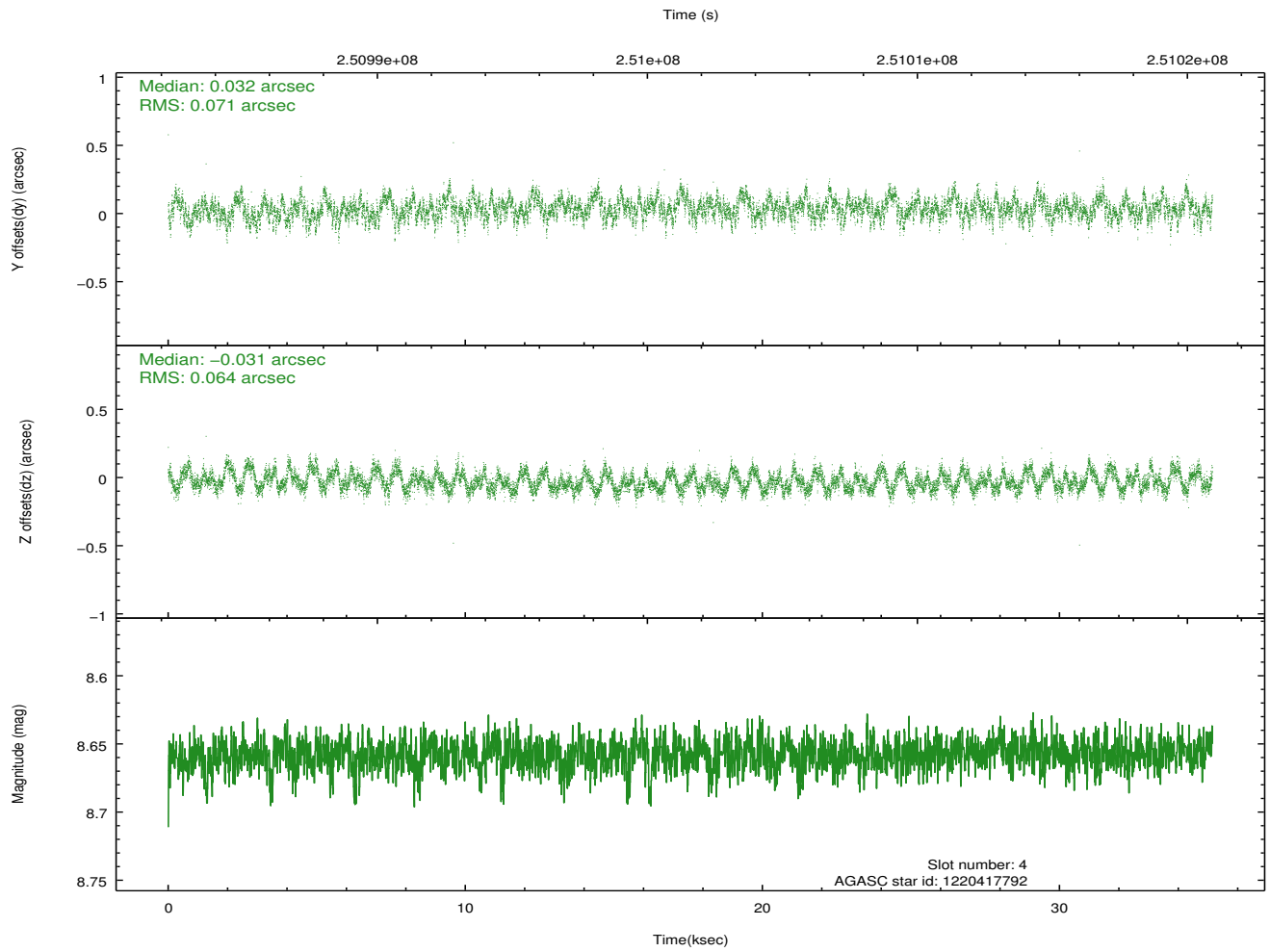
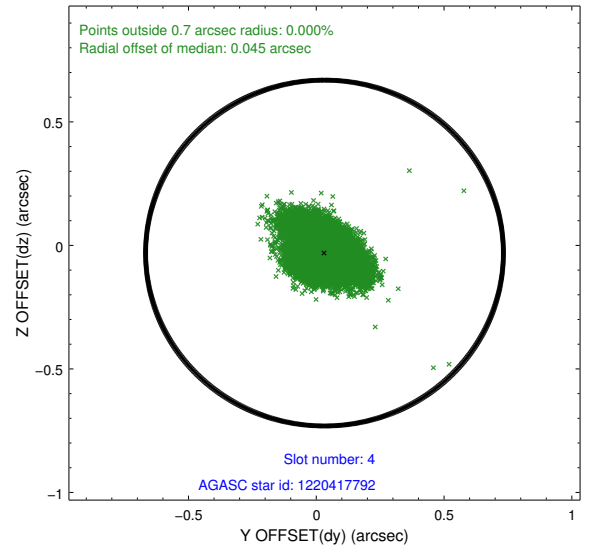
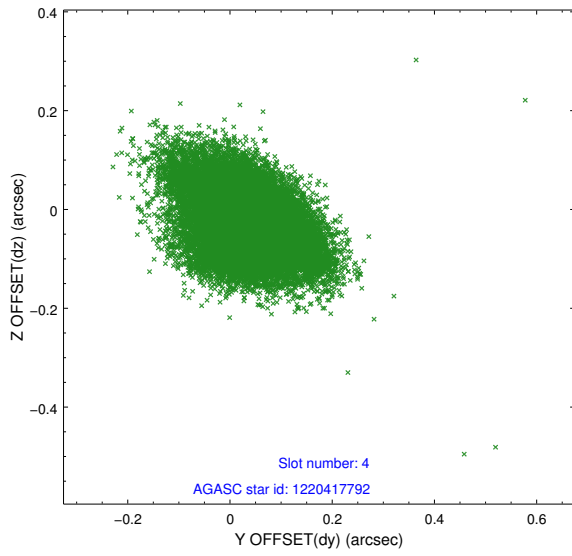
∞

2.4 Star Slots

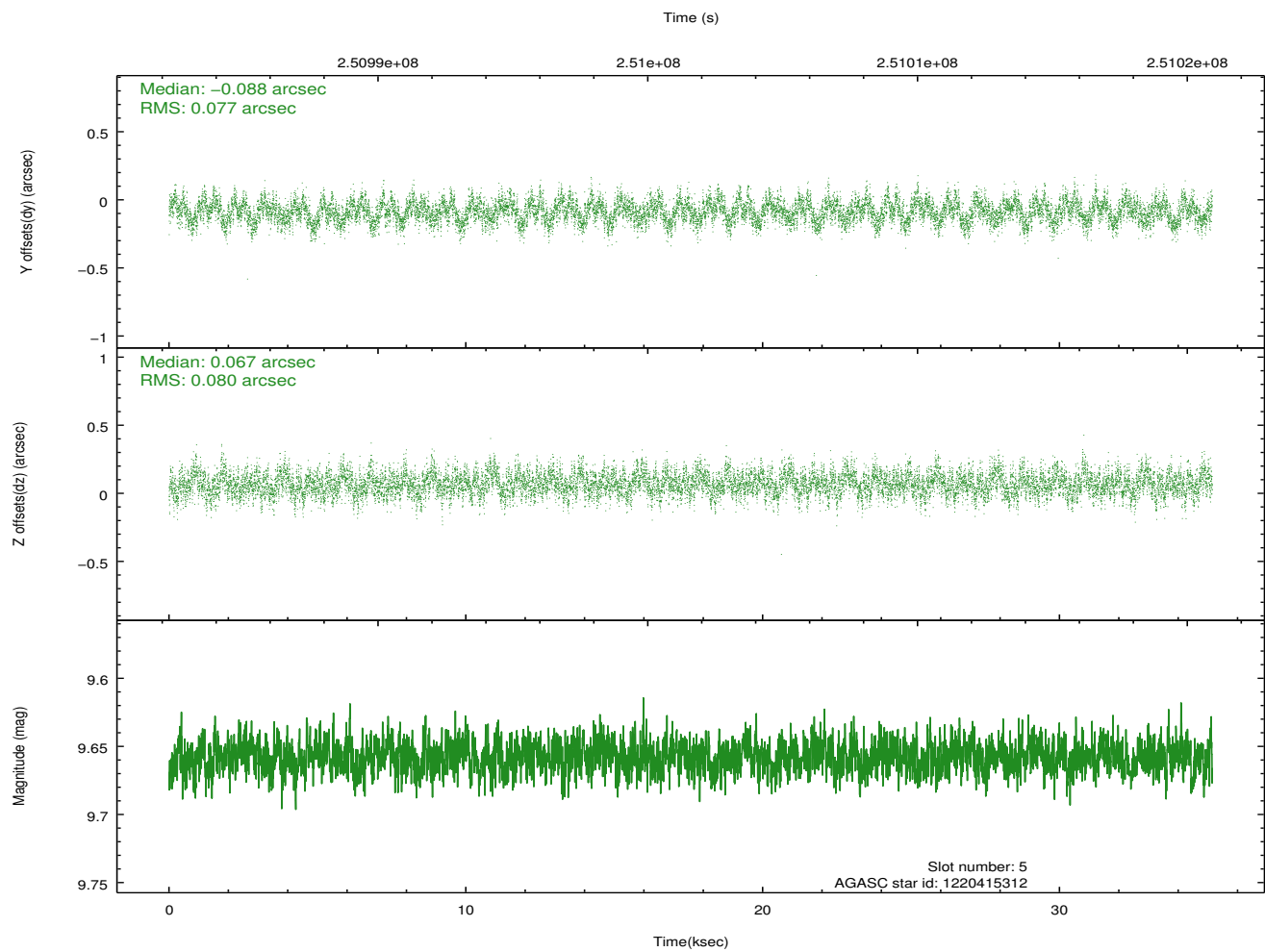
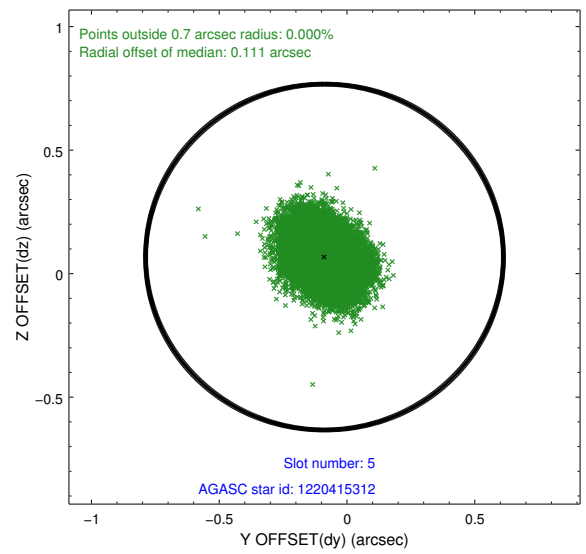
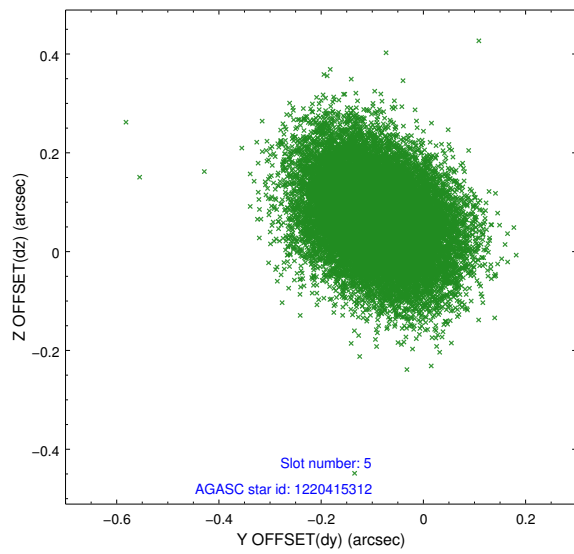
2.4.1 Slot 3



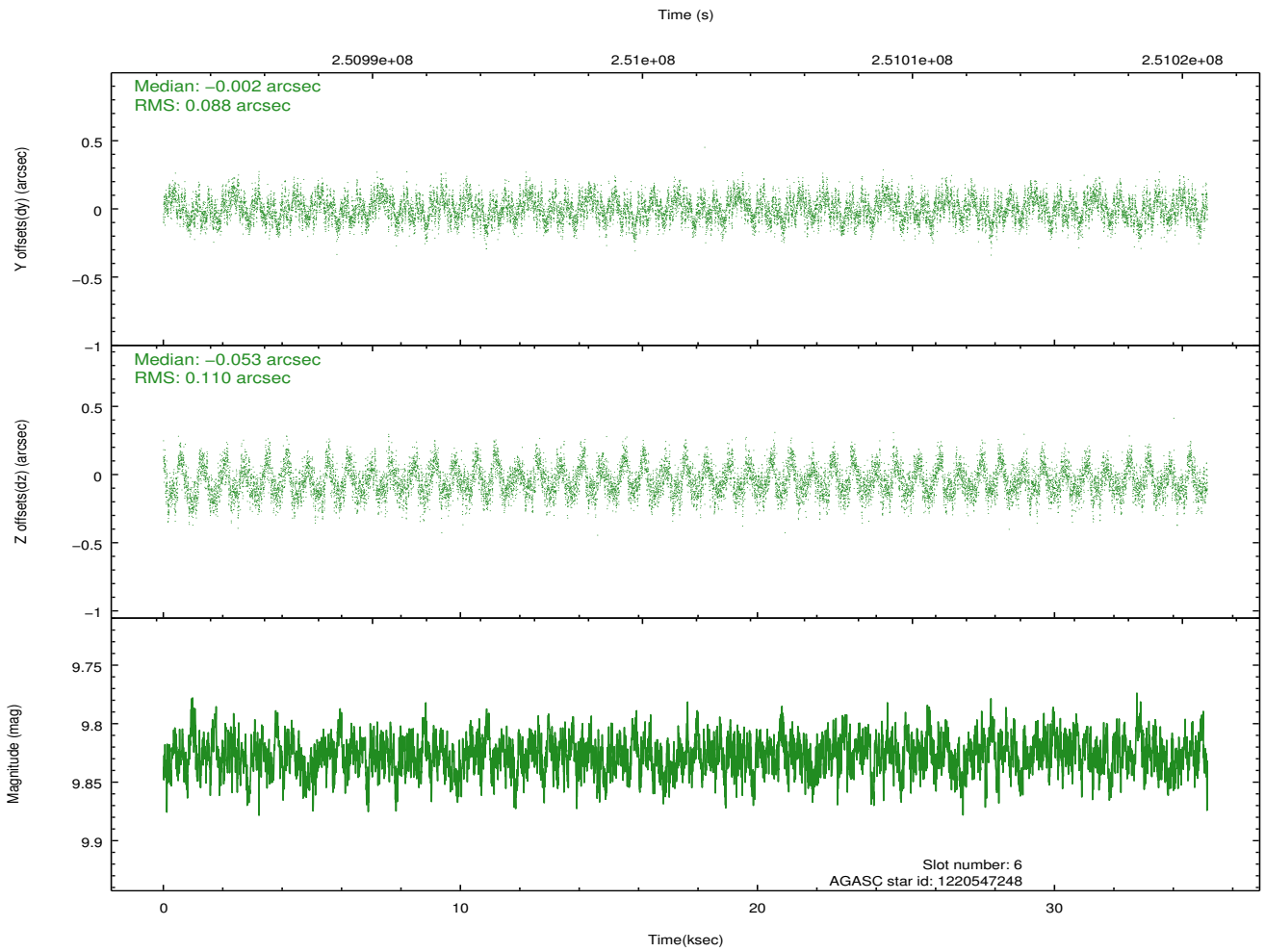
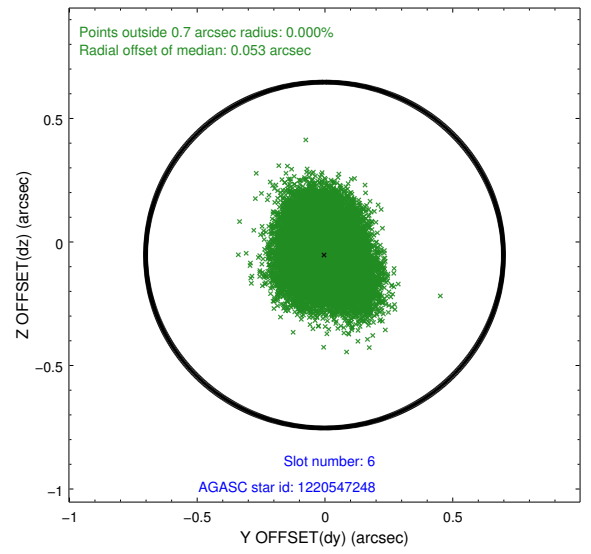
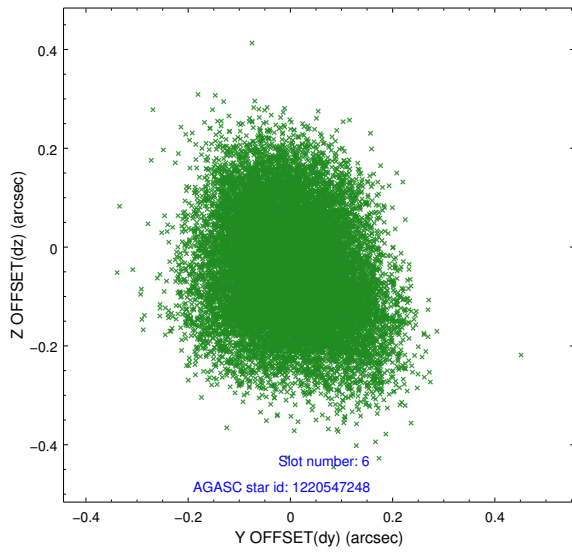
2.4.2 Slot 4



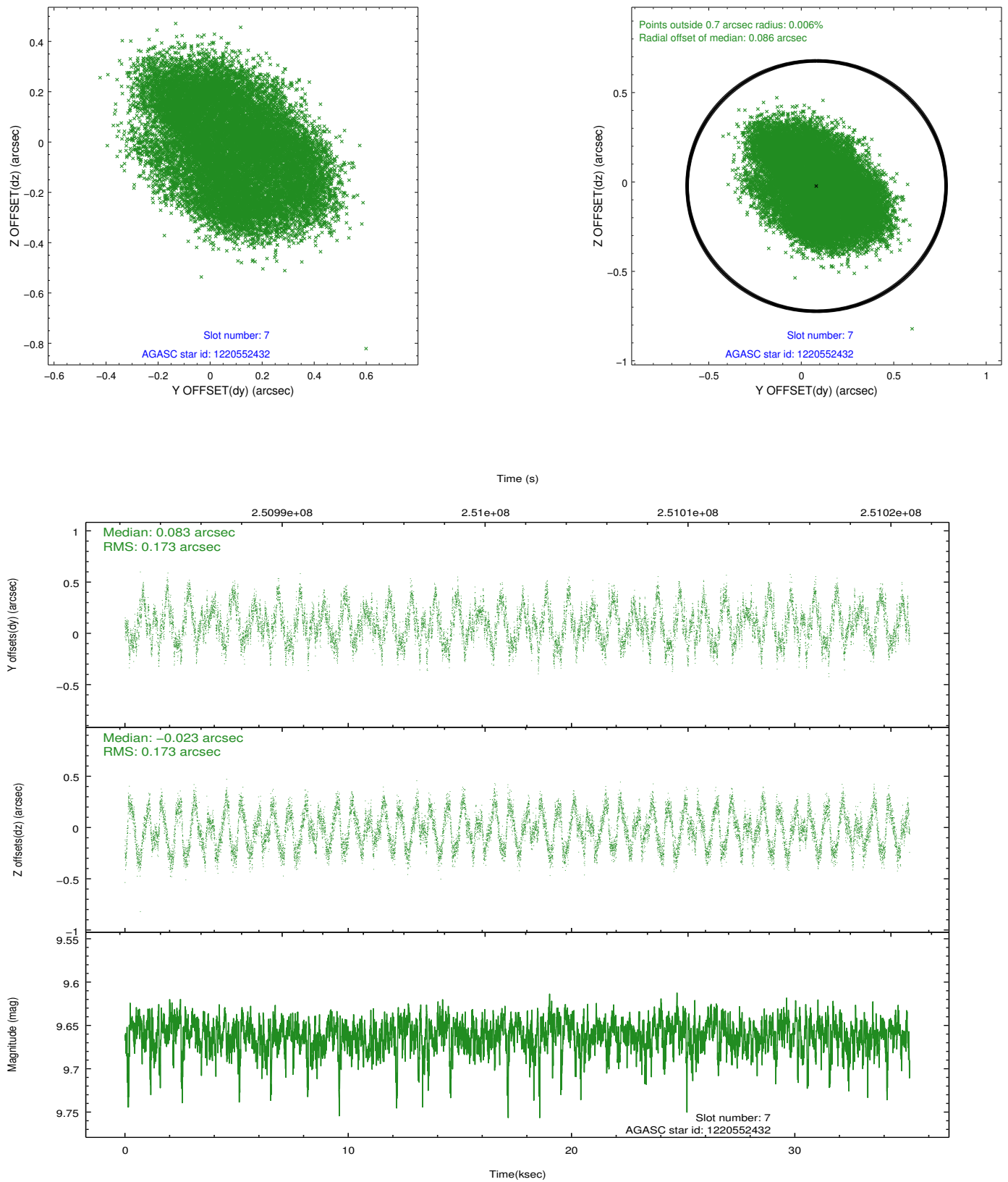
2.4.3 Slot 5



2.4.4 Slot 6

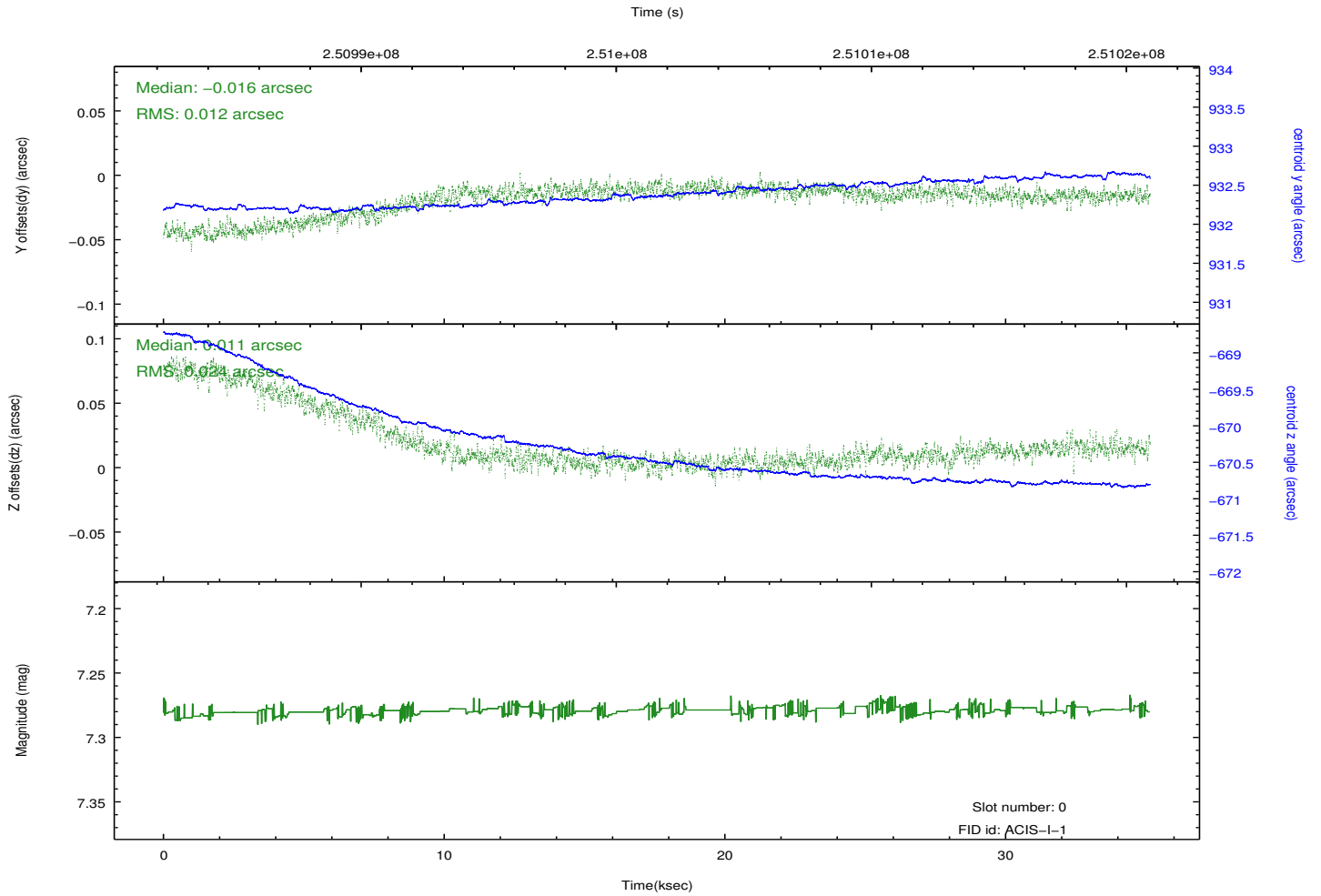
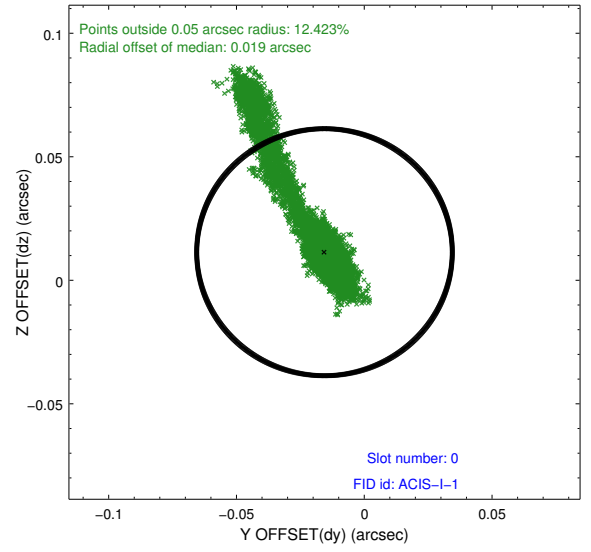
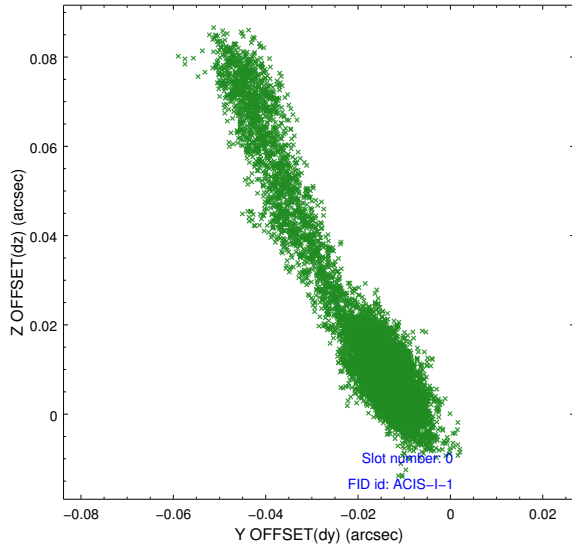


2.4.5 Slot 7

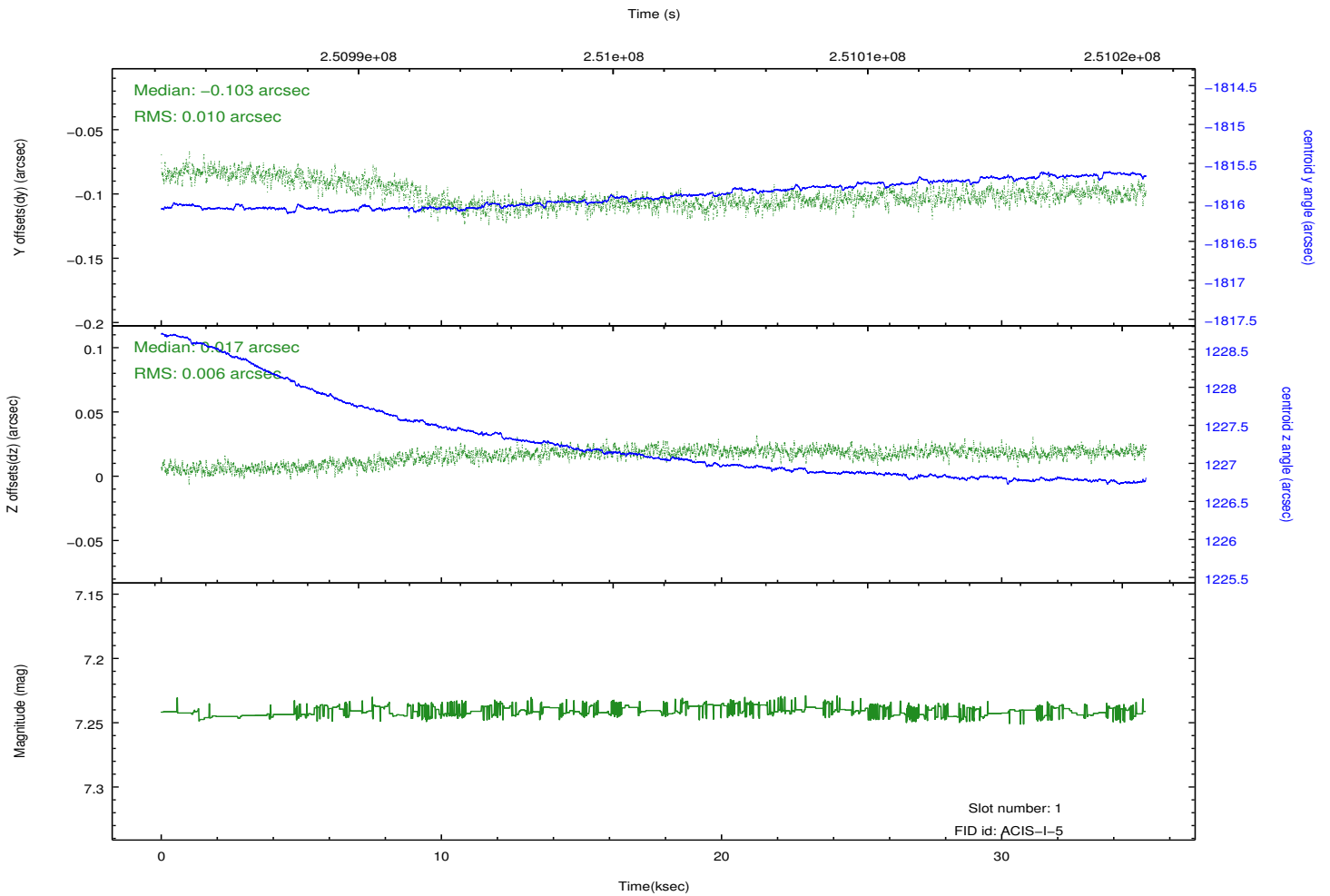
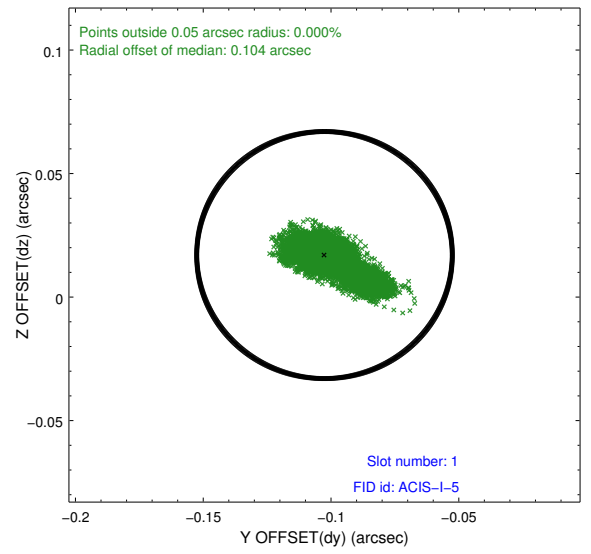
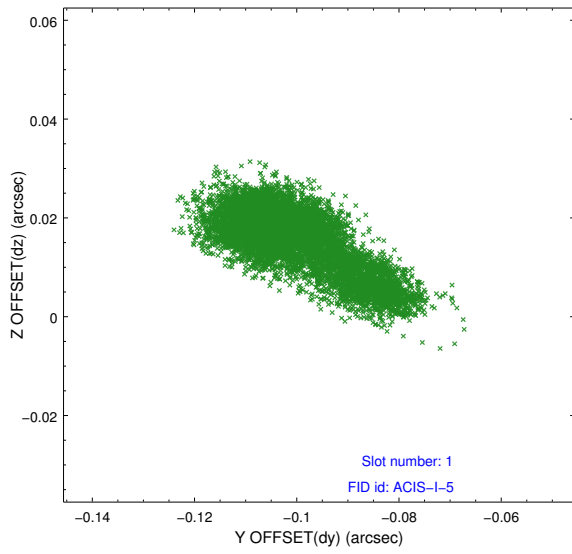


2.5 FID Slots

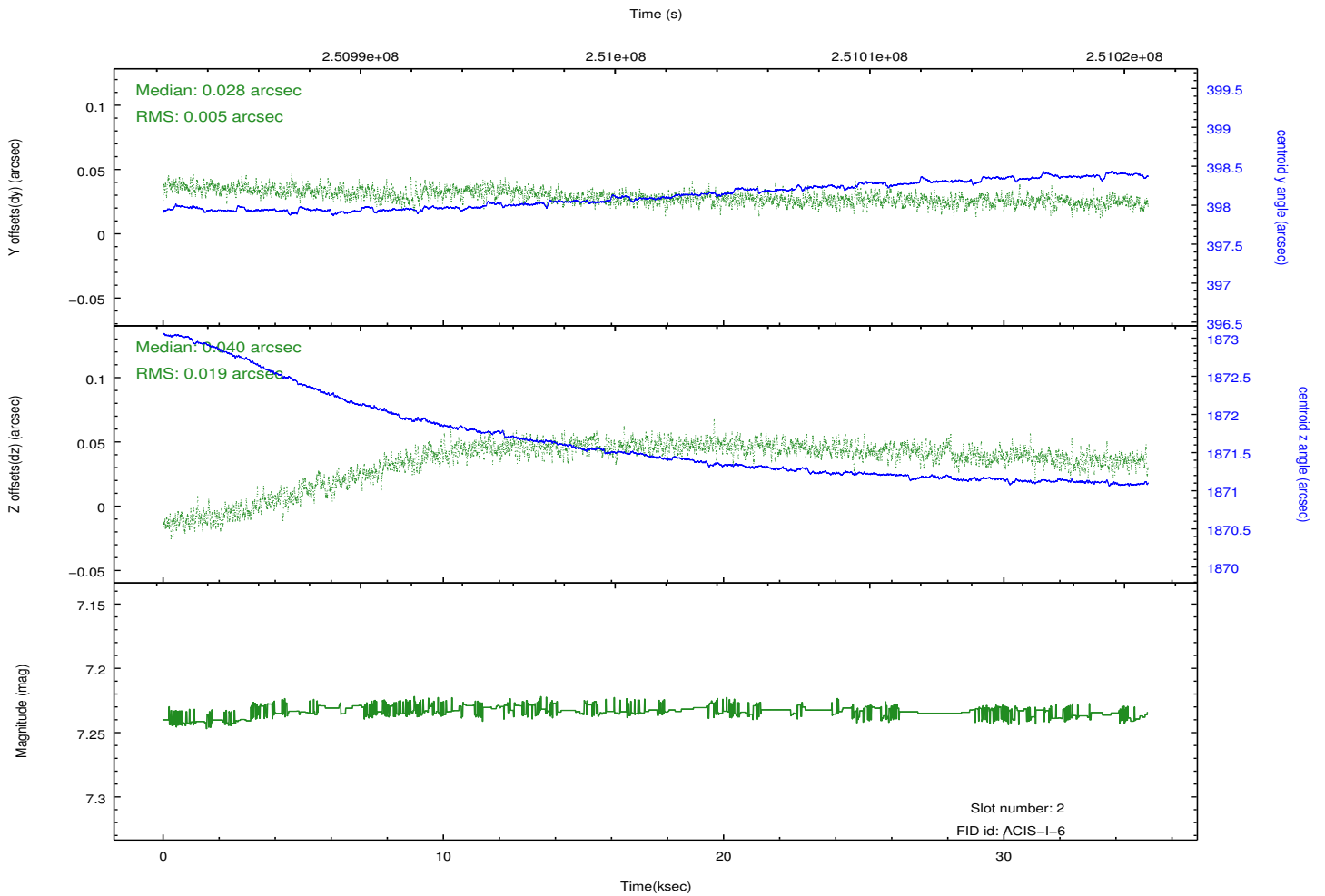
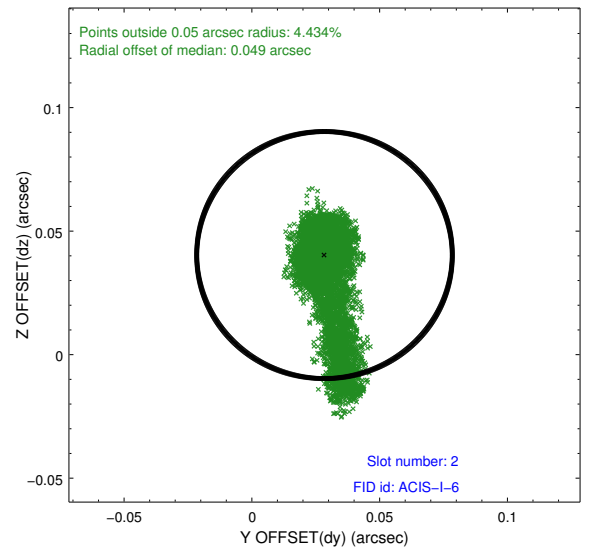
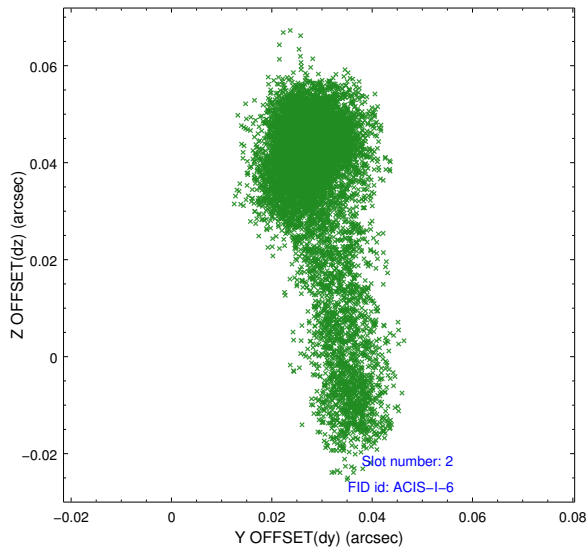
2.5.1 Slot 0



2.5.2 Slot 1



2.5.3 Slot 2



A Summary

A.1 Status

V&V Scientist	Jen Lauer
V&V Date (YYYY-MM-DD)	2012.03.20
V&V Edition	1
V&V Disposition and Status	OK
V&V Charge Time	35.12593

A.2 Comments