

V&V Reference Report

L2 ASCDS Version : 8.4.3

Observation 7288 - L2 Version 4
Chandra X-Ray Center

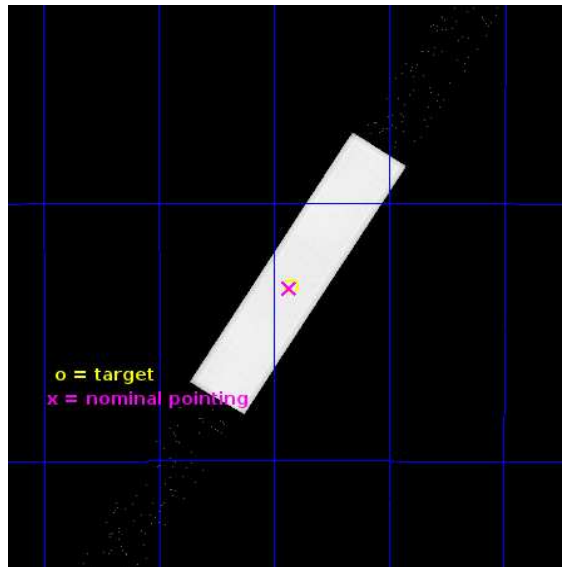
L2 Processing Date : Jun 29 2013

Contents

1	Front	2
2	OBI	3
2.1	OBI	3
2.1.1	Images	3
2.1.2	Parameters	4
2.1.3	Events	4
2.2	Compared Parameters	5
2.3	Aspect	6
2.4	Star Slots	9
2.4.1	Slot 3	9
2.4.2	Slot 4	10
2.4.3	Slot 5	11
2.4.4	Slot 6	12
2.4.5	Slot 7	13
2.5	FID Slots	14
2.5.1	Slot 0	14
2.5.2	Slot 1	15
2.5.3	Slot 2	16
A	Summary	17
A.1	Status	17
A.2	Comments	17

1 Front

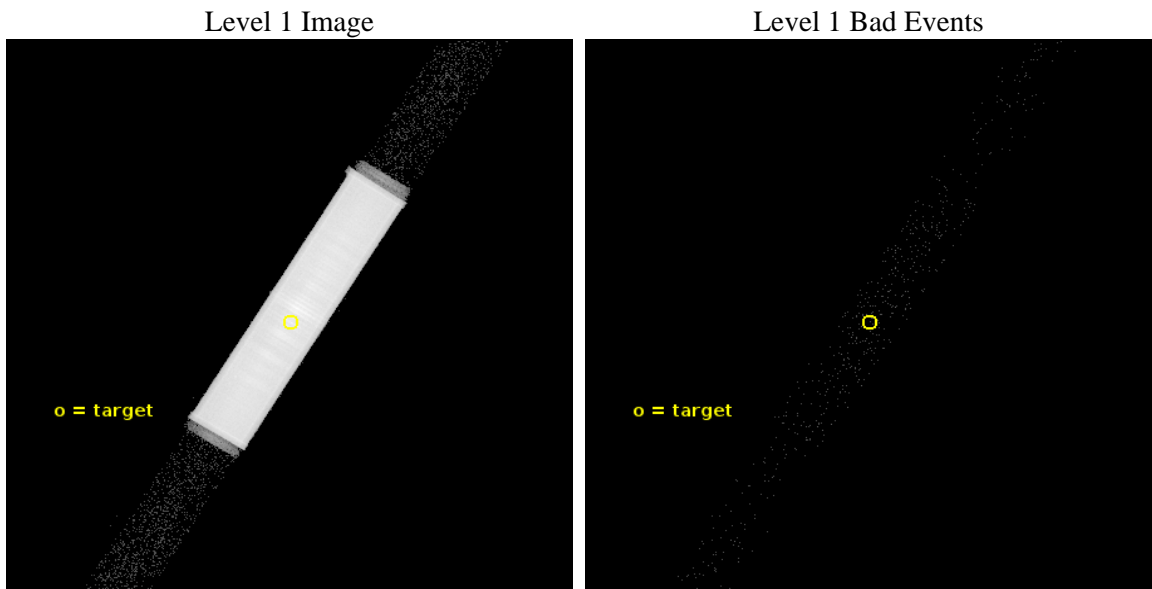
seq_num	400436	Sequence number
obs_id	7288	Observation id
title	Probing the X-ray Emission from Dueling Magnetospheres	Proposal ti
observer	Dr. Shami Chatterjee	Principal investigator
object	PSR J0737-3039	Source name
ra_targ	114.46375	Observer's specified target RA [deg]
dec_targ	-30.661306	Observer's specified target Dec [deg]
ra_nom	114.46654313367	Nominal RA [deg]
dec_nom	-30.665351305255	Nominal Dec [deg]
roll_nom	302.06875096552	Nominal Roll [deg]
revision	4	Processing version of data
ontime	35875.129796386	[s]
livetime	35669.756920797	Ontime multiplied by DTCOR
l2events	1831511	Number of level 2 events



2 OBI

2.1 OBI

2.1.1 Images



2.1.2 Parameters

obi_num	0	Obi number	sched_exp_time	35663.888000	[s] Scheduled observation exposure time
ascdsver	10	Processing system revision	ontime	35877.051667988	[s]
caldsver	4.5.7	 	l1events	2564091	Number of level 1 events
date	2013-06-29T06:05:27	Date and time of file creation			
revision	4	Processing version of data			

2.1.3 Events

Level 1 Events

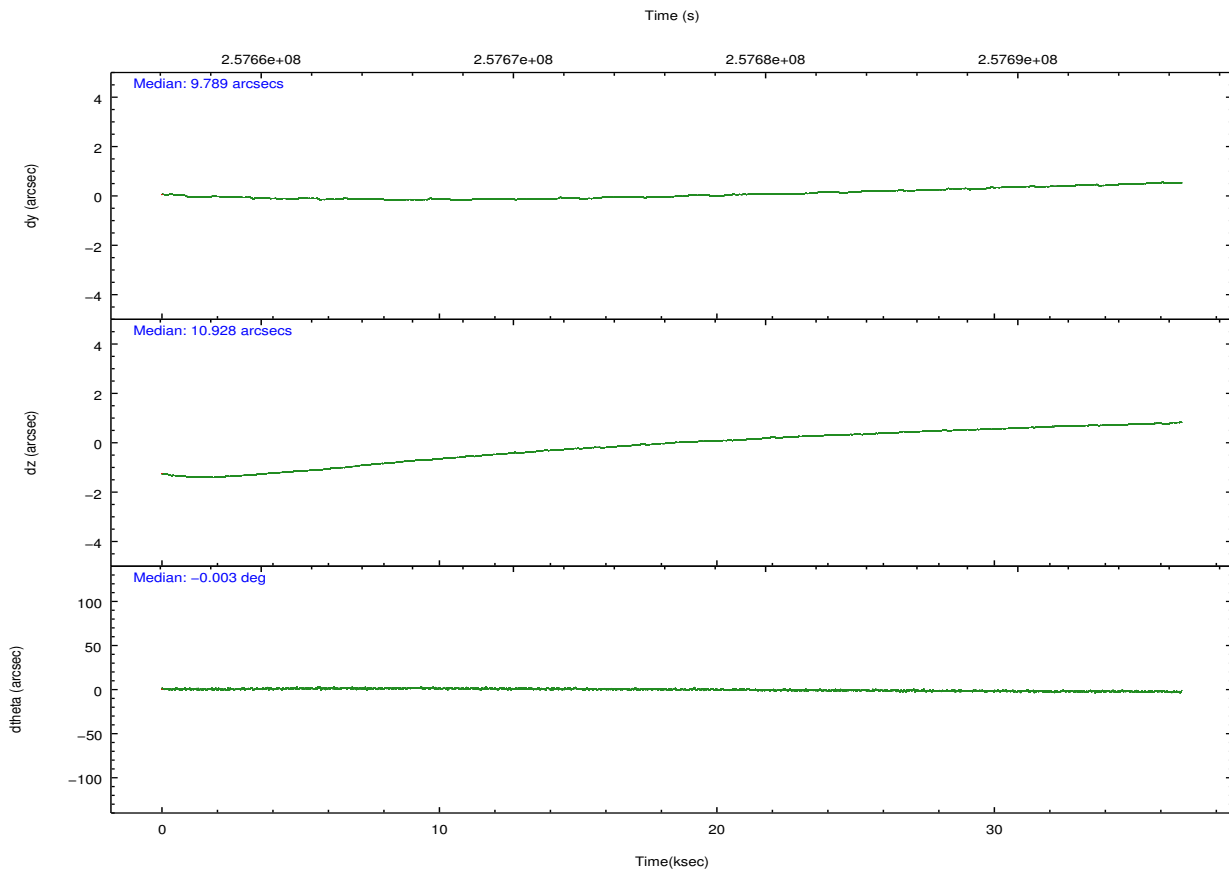
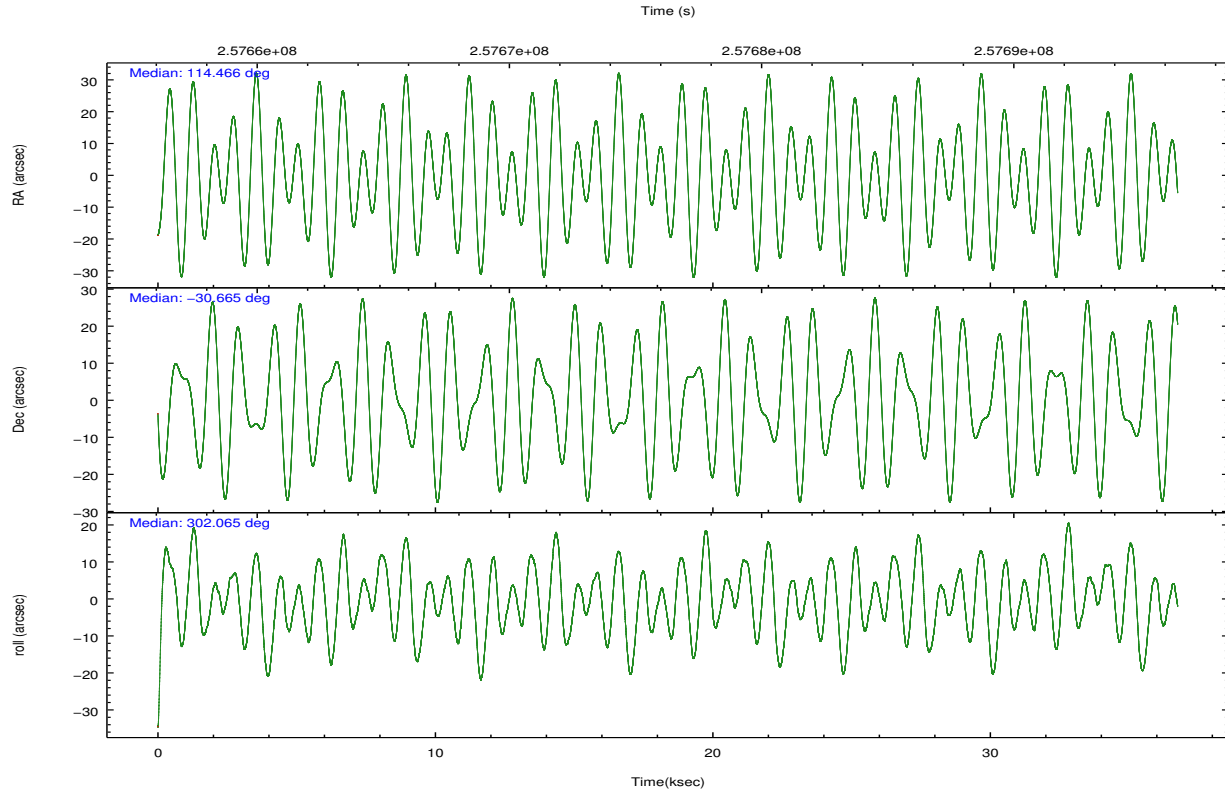
	segment 1	segment 2	segment 3
level 1 events	4643	2557550	1898
rejected events	1745	38956	1729
rejected %	37%	1%	91%

2.2 Compared Parameters

Parameter	Planned	Actual
Instrument	HRC	HRC
Detector	HRC-S	HRC-S
Grating	NONE	NONE
Data mode	OBSERVING	OBSERVING
Observation mode	POINTING	POINTING
[deg] Pointing RA	114.436400	114.4665431336672
[deg] Pointing Dec	-30.653207	-30.66535130525483
[deg] Pointing Roll	301.986058	302.0687509655236
[mm] SIM focus pos	-1.529586	-1.523540733526241
[mm] SIM defocus	0.003750771043328743	0.009795905878055677
[mm] SIM translation stage pos	250.455976	250.466033080201
[mm] SIM translation stage offset	0	-0.01005468664627074
[s] Observation start time (MET)	257658091.184000	257657354.19456
Observation start date	2006-03-02T03:40:26	2006-03-02T03:29:14
[s] Observation end time (MET)	257693755.184000	257695205.39632
Observation end date	2006-03-02T13:34:50	2006-03-02T14:00:05

Parameter	Planned	Actual
Obspar format version number	7	7
Obspar file type	PREDICTED	ACTUAL
Obspar update status	NONE	UPDATED

2.3 Aspect

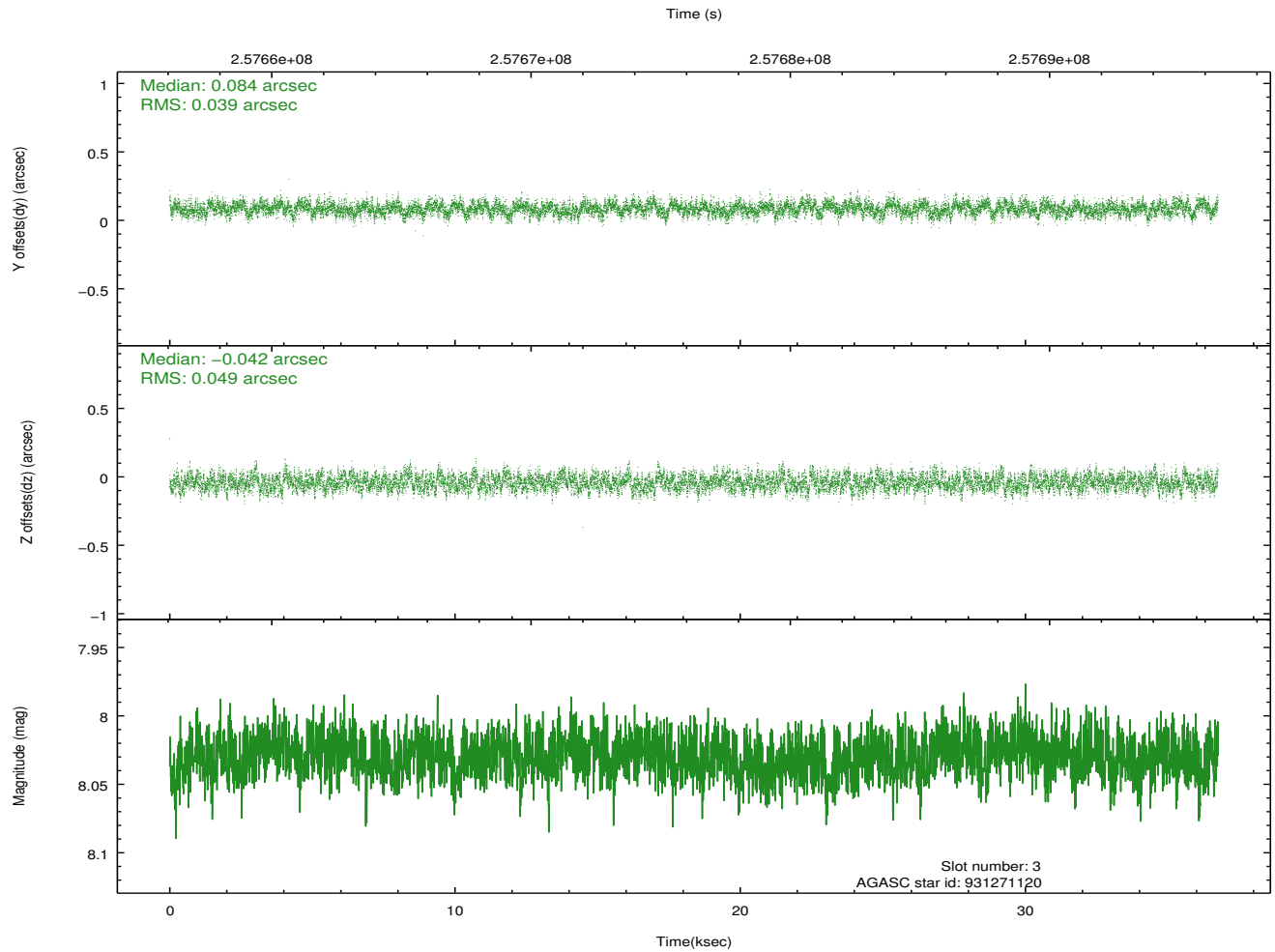
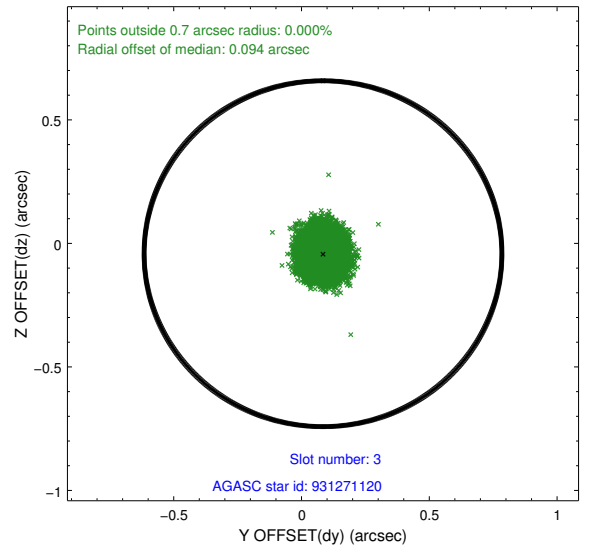
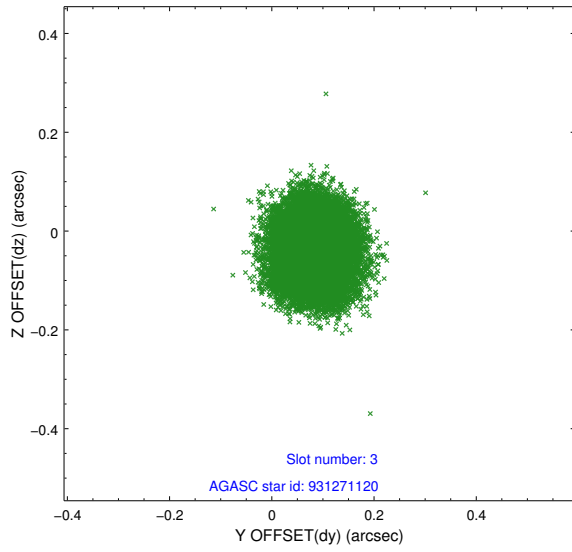


Slot Statistics

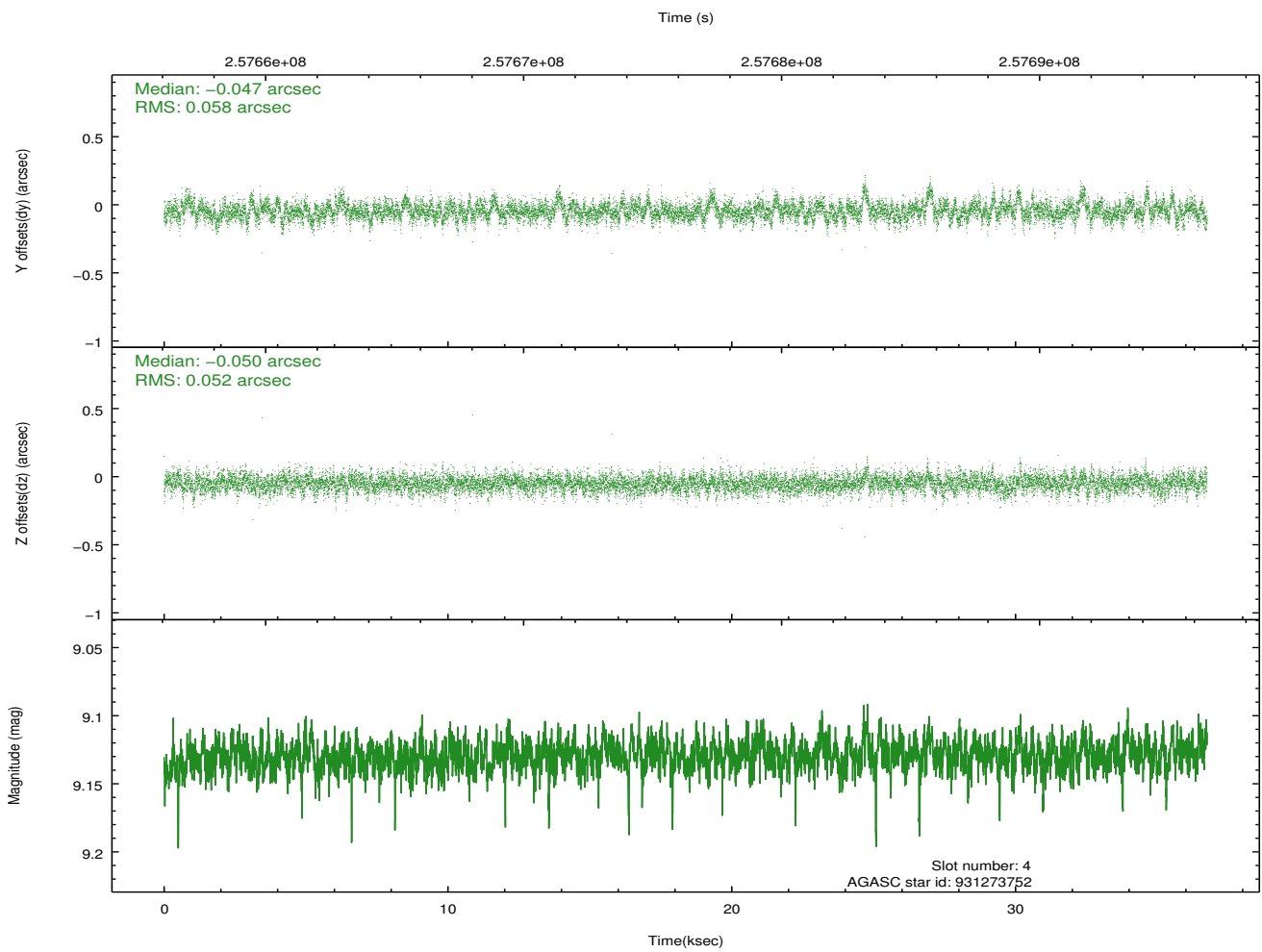
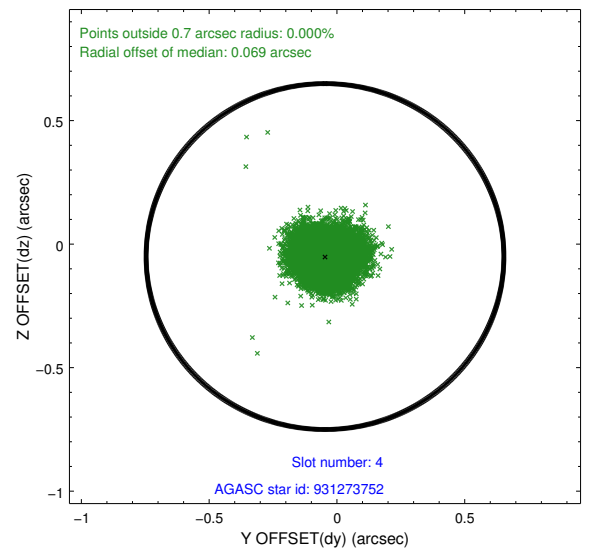
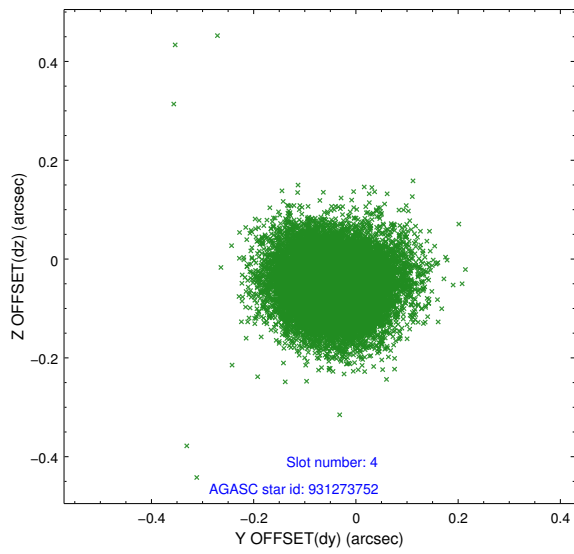
slot	status	id	mag	n_pts	med_dy	med_dz	dr1	dr2	ra	dec	mean_y	mean_z
0	FID	HRC-S-1	7.03	8964	0.130	-0.186	0.028	0.045	0.000000	0.000000	-1164.09	-459.50
1	FID	HRC-S-2	7.02	8965	0.154	-0.111	0.009	0.017	0.000000	0.000000	1235.47	-452.14
2	FID	HRC-S-3	7.04	8965	0.105	-0.005	0.027	0.042	0.000000	0.000000	-1166.68	570.14
3	GUIDE	931271120	8.03	17926	0.084	-0.042	0.068	0.108	114.333464	-30.792205	256.37	-534.89
4	GUIDE	931273752	9.13	17899	-0.047	-0.050	0.081	0.137	114.272866	-30.278196	-1413.80	283.82
5	GUIDE	931276288	9.27	17910	0.040	0.007	0.102	0.169	114.013223	-30.688150	-584.81	-1178.88
6	GUIDE	931278264	9.62	17916	-0.068	0.044	0.114	0.189	113.626469	-30.363819	-2208.24	-1586.73
7	GUIDE	931425192	9.58	17915	-0.012	0.044	0.123	0.202	115.048537	-30.522181	610.46	1857.69

2.4 Star Slots

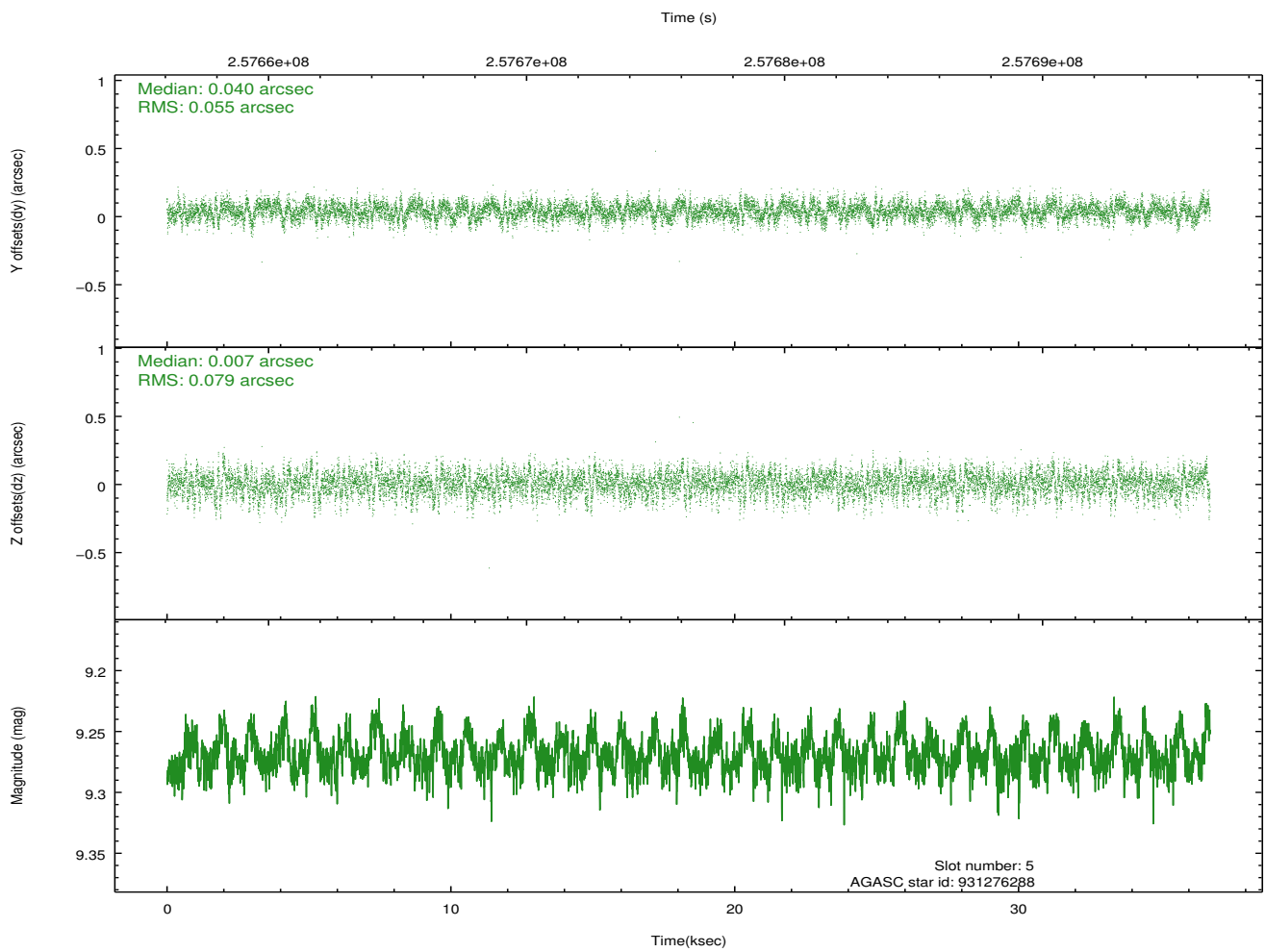
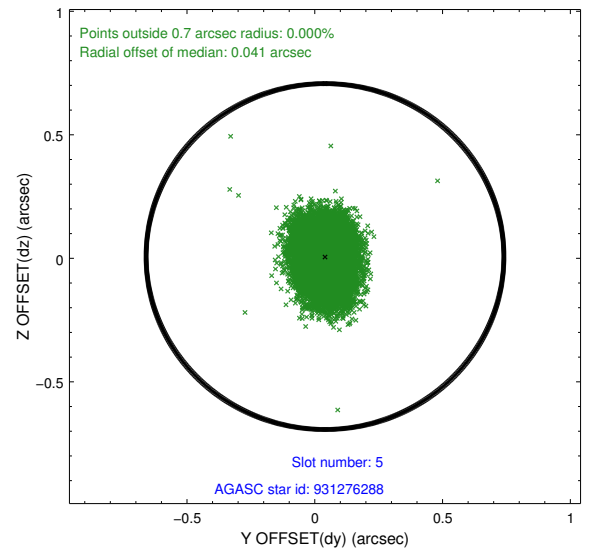
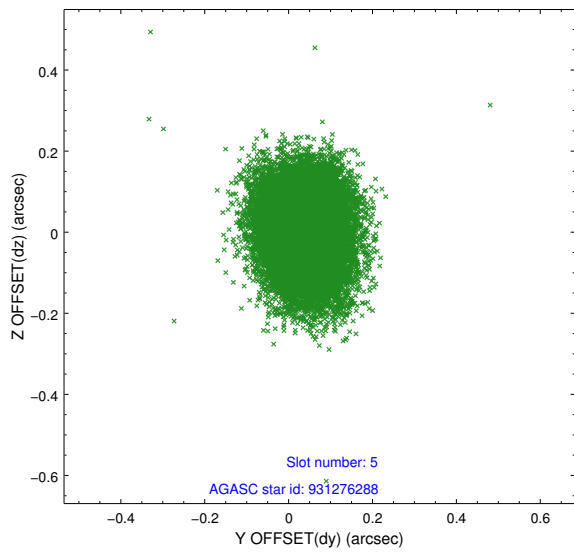
2.4.1 Slot 3



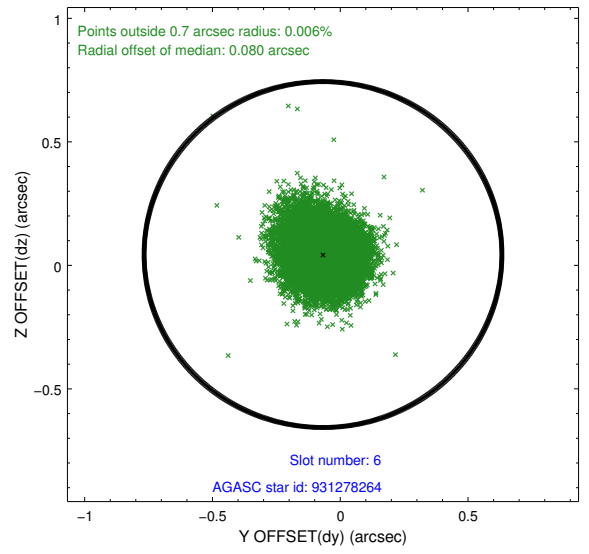
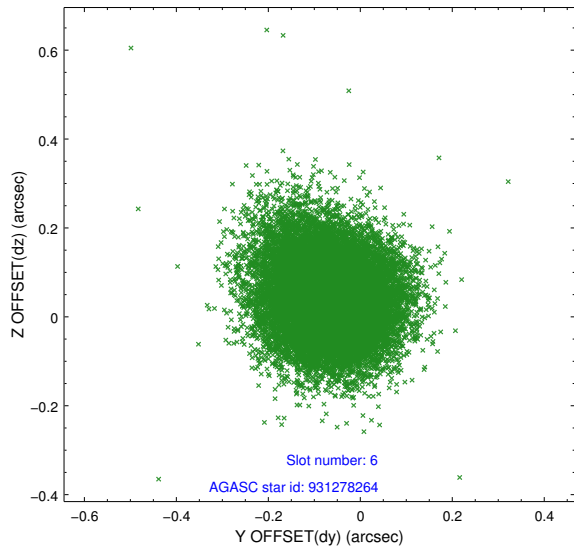
2.4.2 Slot 4



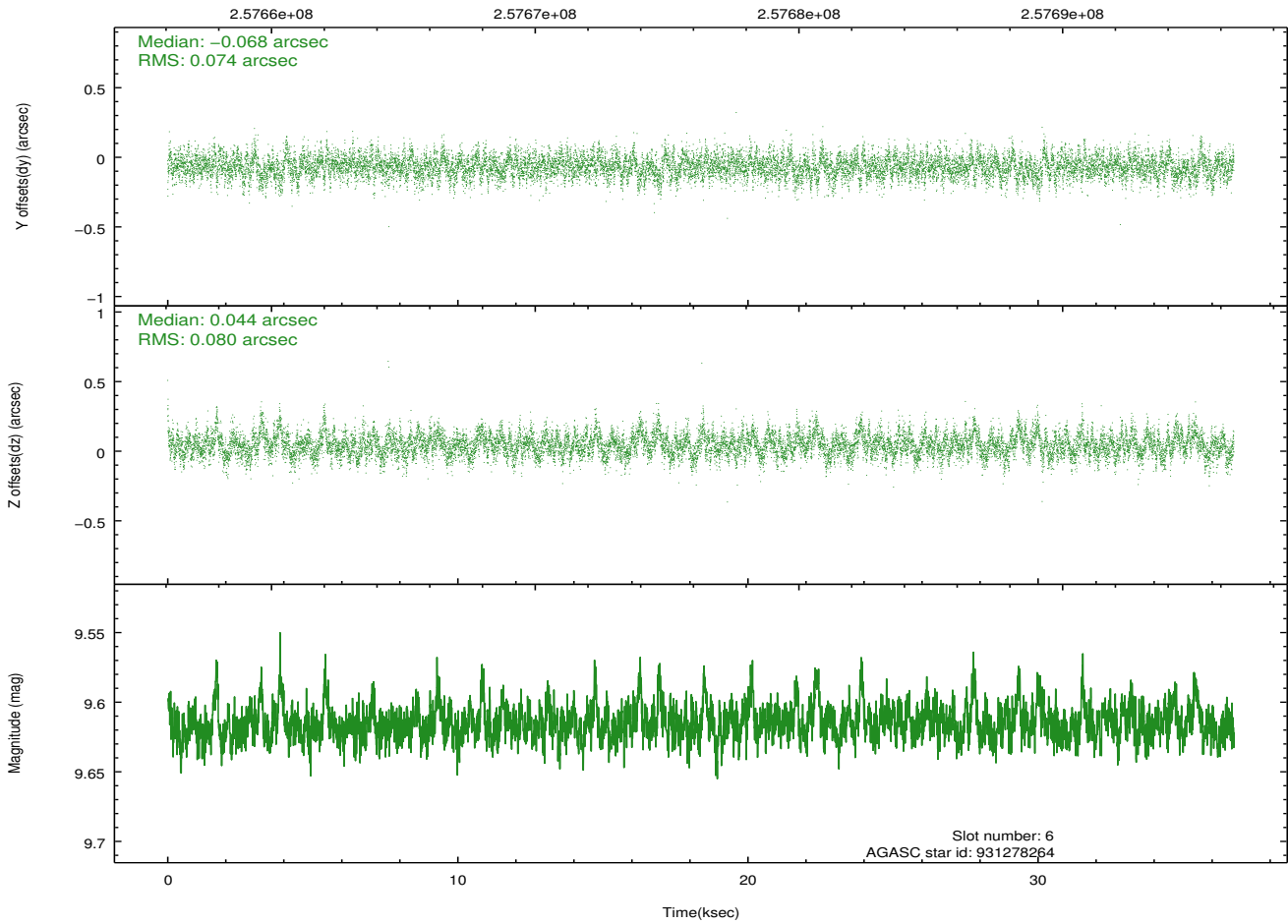
2.4.3 Slot 5



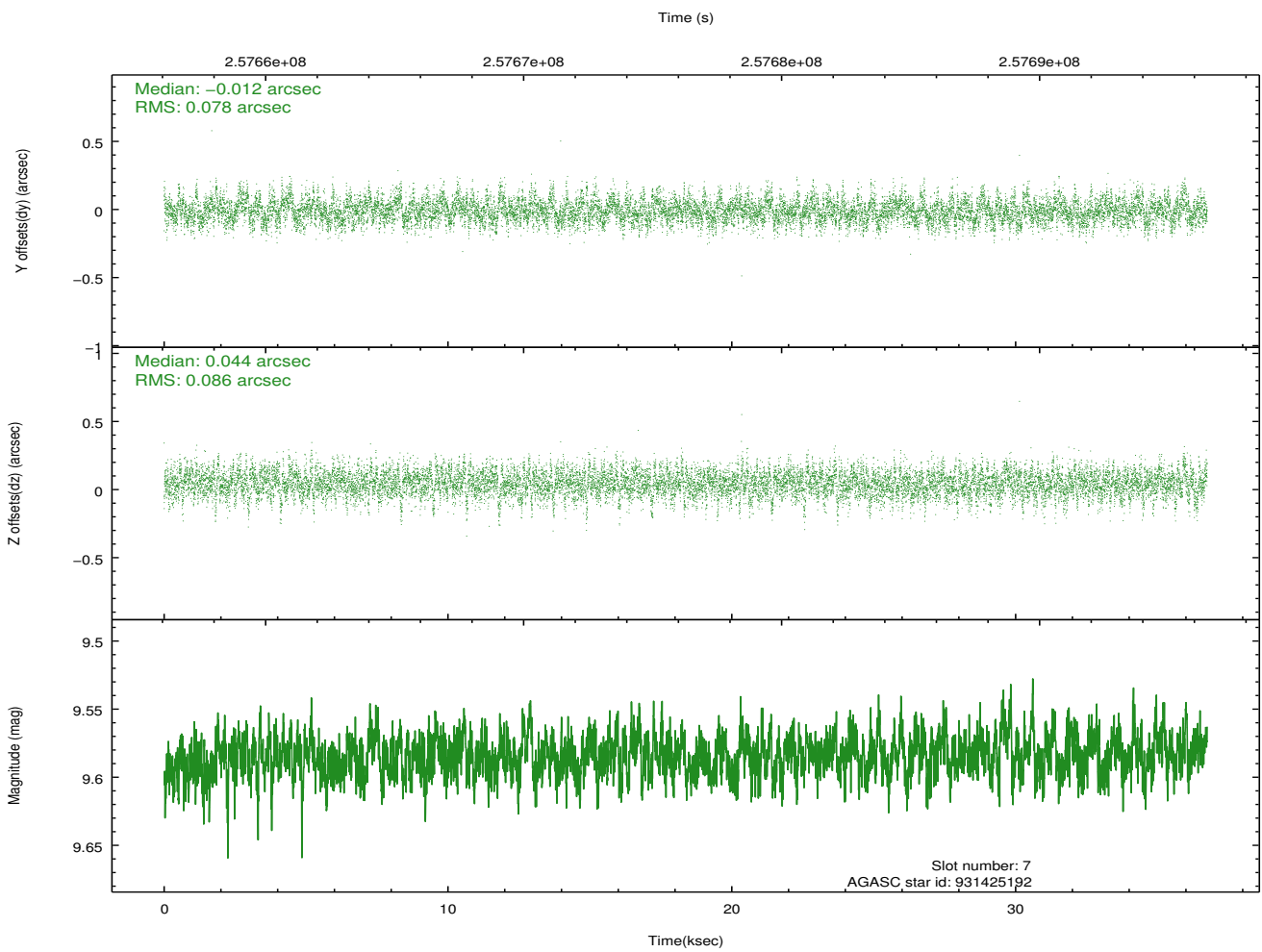
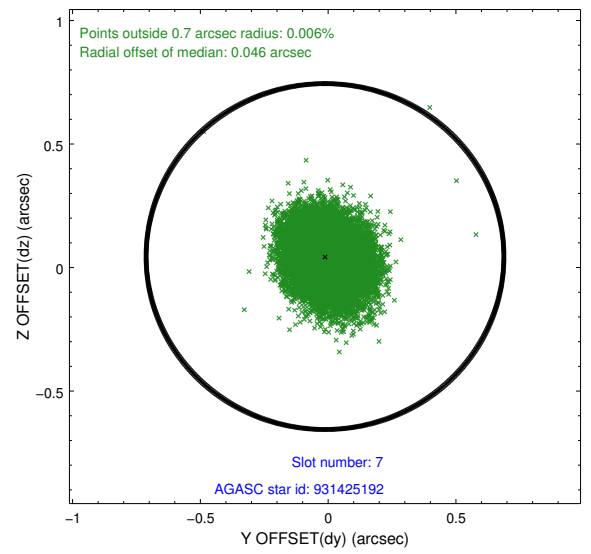
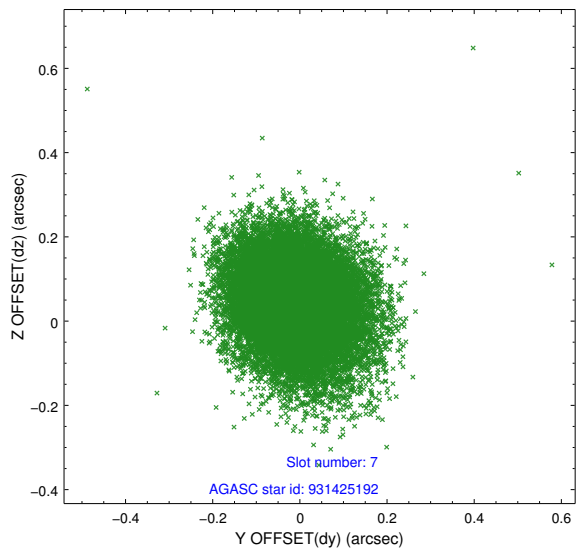
2.4.4 Slot 6



Time (s)

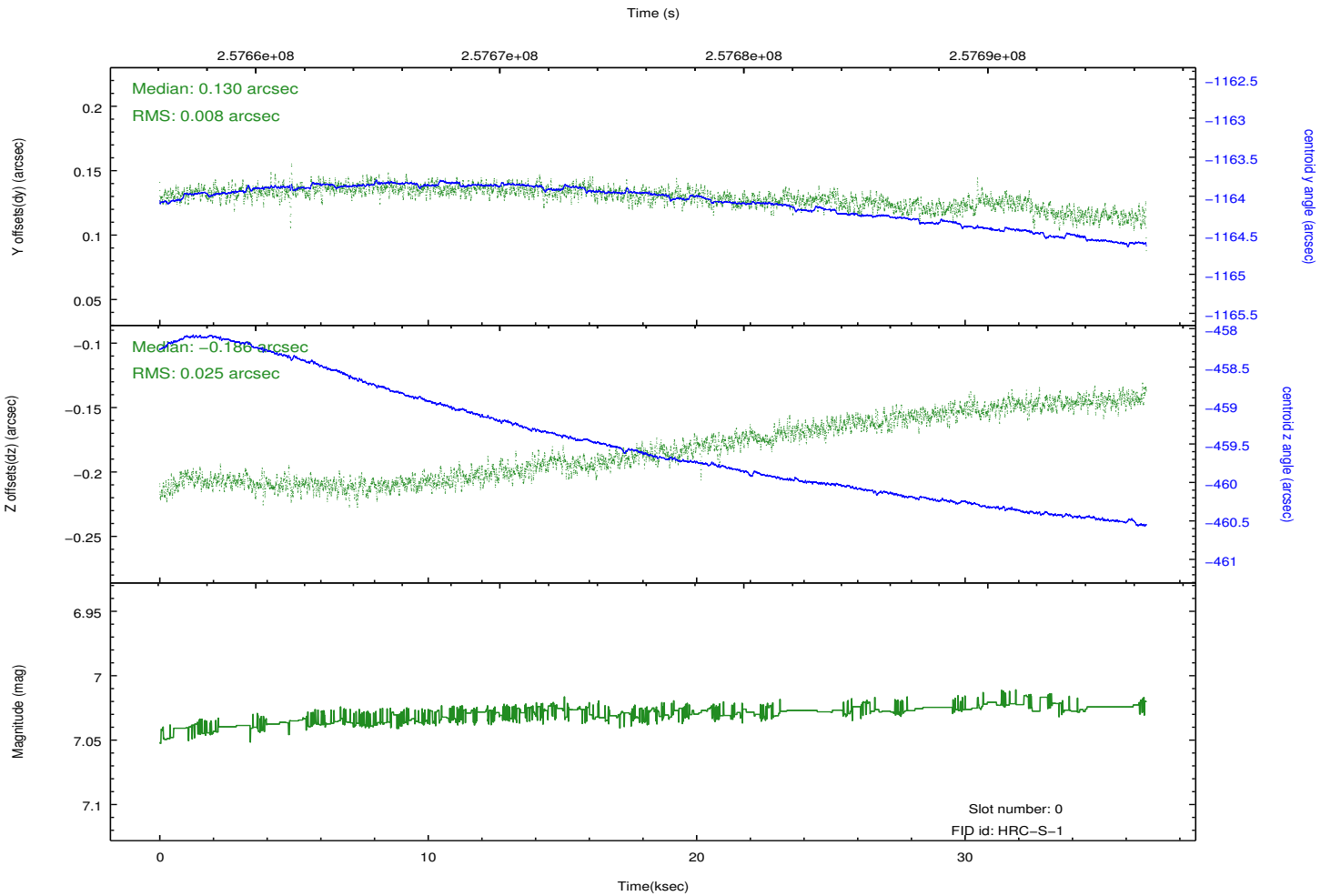
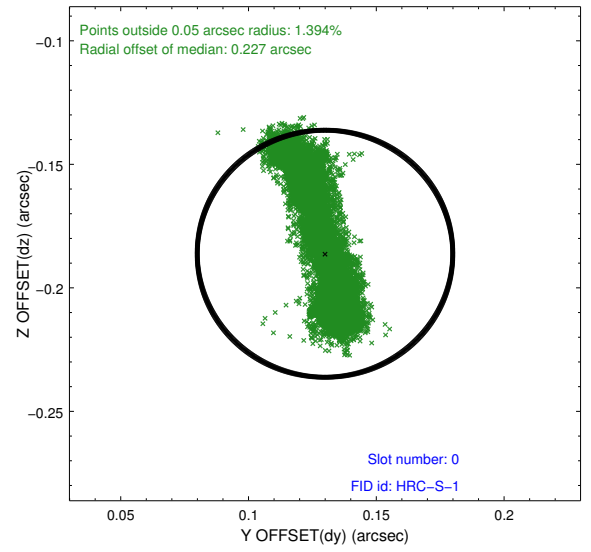
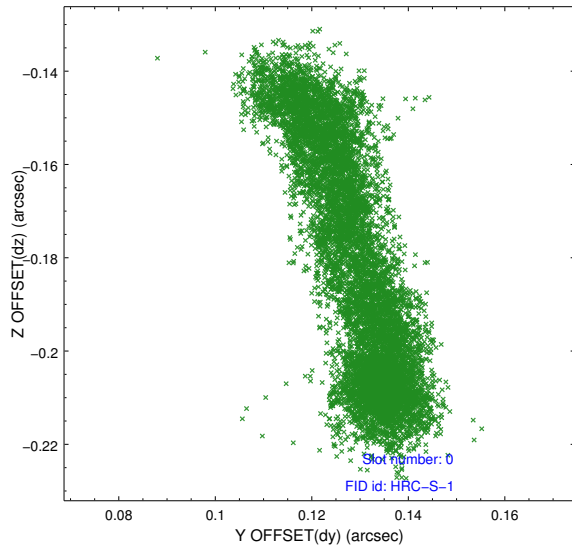


2.4.5 Slot 7

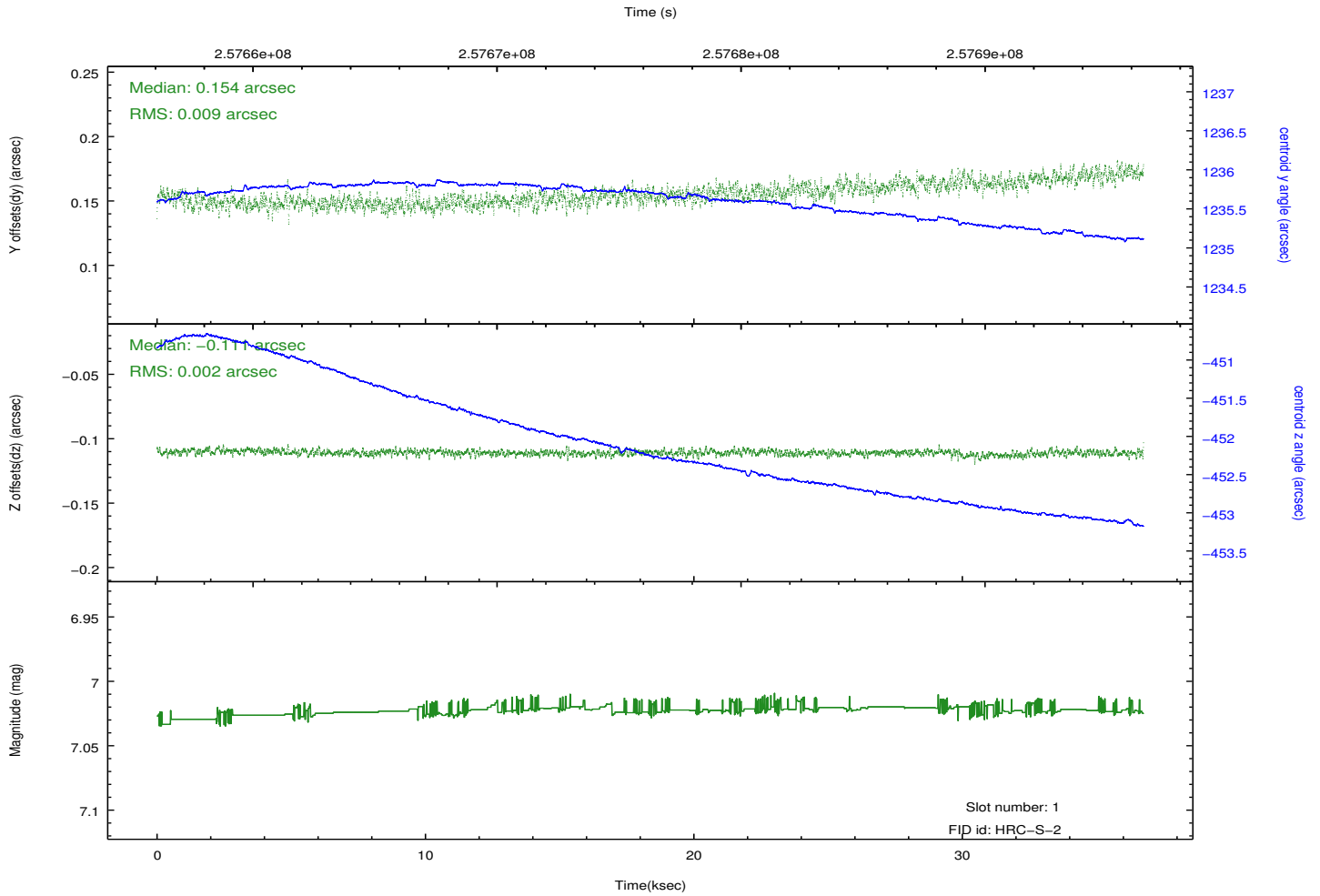
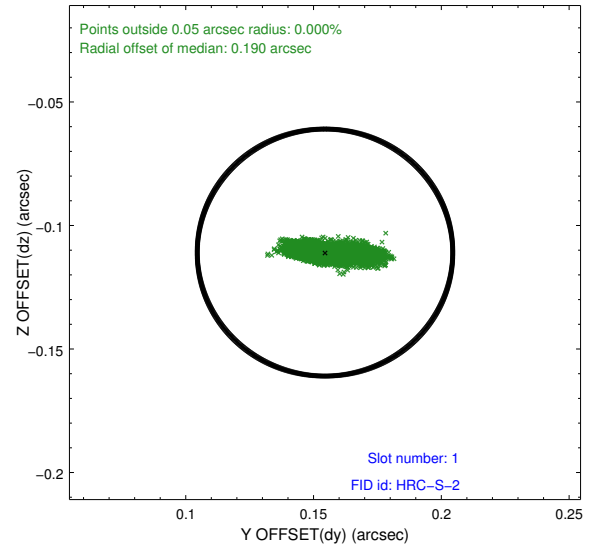
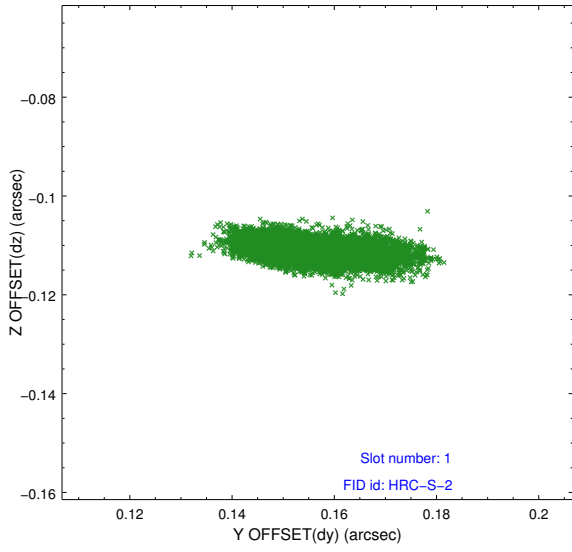


2.5 FID Slots

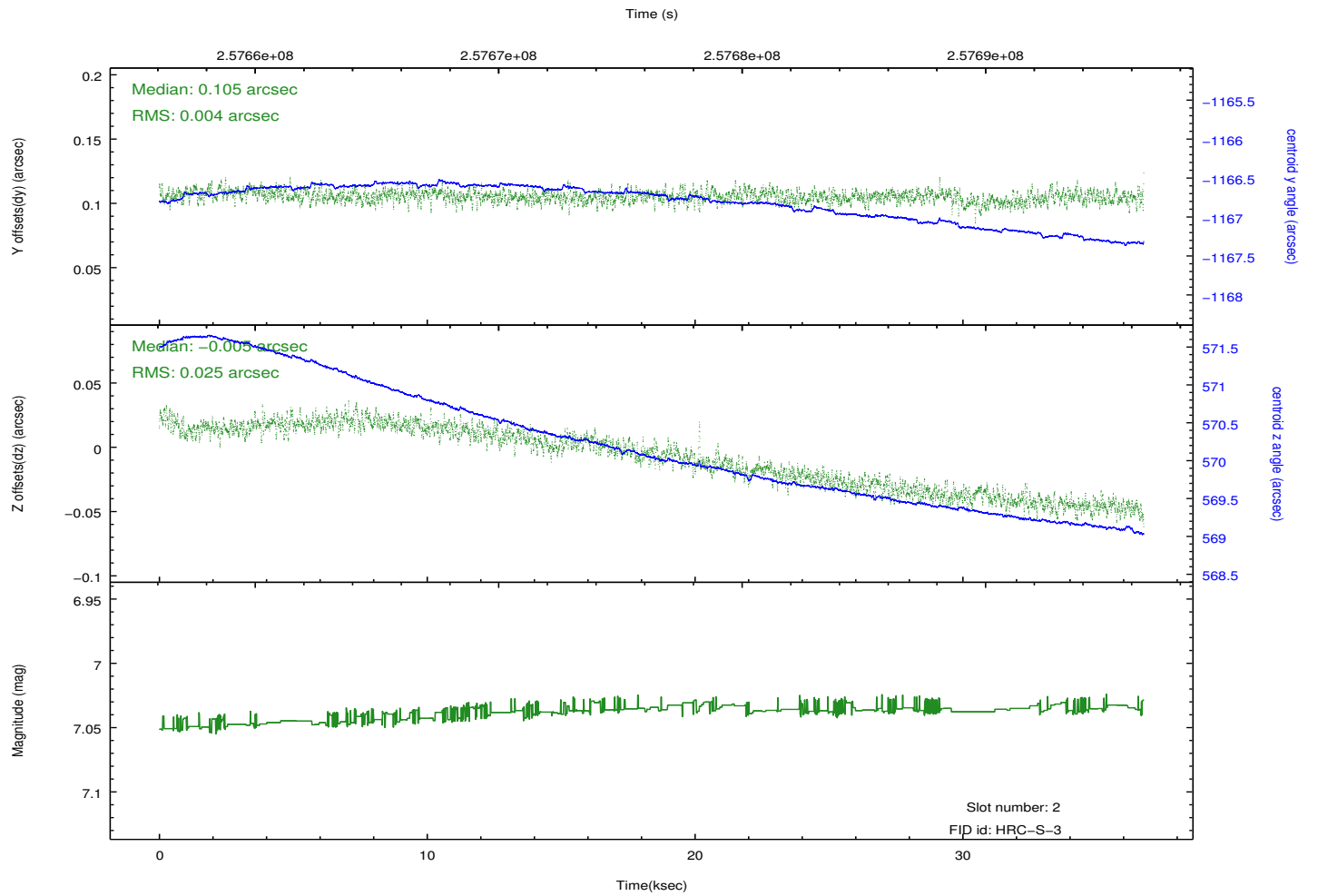
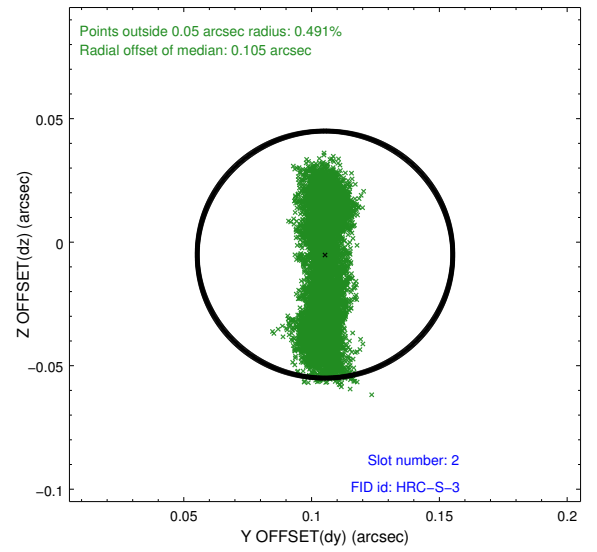
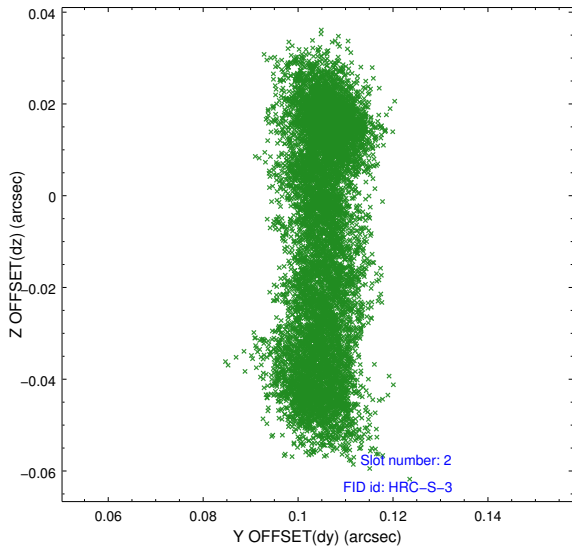
2.5.1 Slot 0



2.5.2 Slot 1



2.5.3 Slot 2



A Summary

A.1 Status

V&V Scientist	Beth Sundheim
V&V Date (YYYY-MM-DD)	2013.07.01
V&V Edition	1
V&V Disposition and Status	OK
V&V Charge Time	35.8750016

A.2 Comments