

V&V Reference Report

L2 ASCDS Version : 8.4.4

Observation 7428 - L2 Version 2
Chandra X-Ray Center

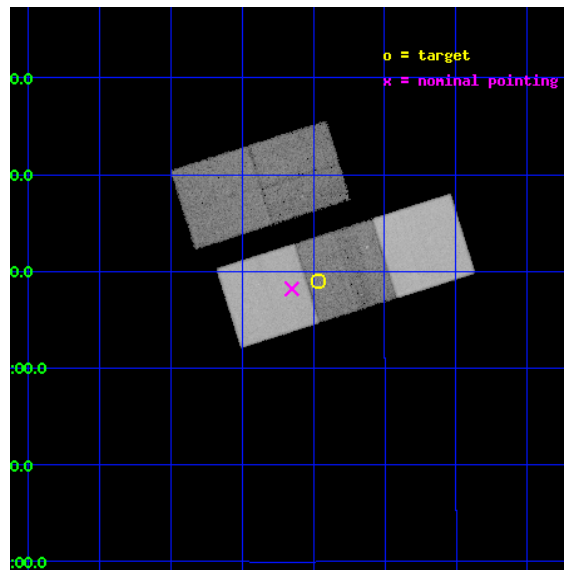
L2 Processing Date : Apr 27 2012

Contents

1	Front	2
2	OBI	3
2.1	OBI	3
2.1.1	Images	3
2.1.2	Bias	3
2.1.3	Parameters	4
2.1.4	Events	4
2.2	Compared Parameters	5
2.3	Aspect	6
2.4	Star Slots	9
2.4.1	Slot 3	9
2.4.2	Slot 4	10
2.4.3	Slot 5	11
2.4.4	Slot 6	12
2.4.5	Slot 7	13
2.5	FID Slots	14
2.5.1	Slot 0	14
2.5.2	Slot 1	15
2.5.3	Slot 2	16
A	Summary	17
A.1	Status	17
A.2	Comments	17

1 Front

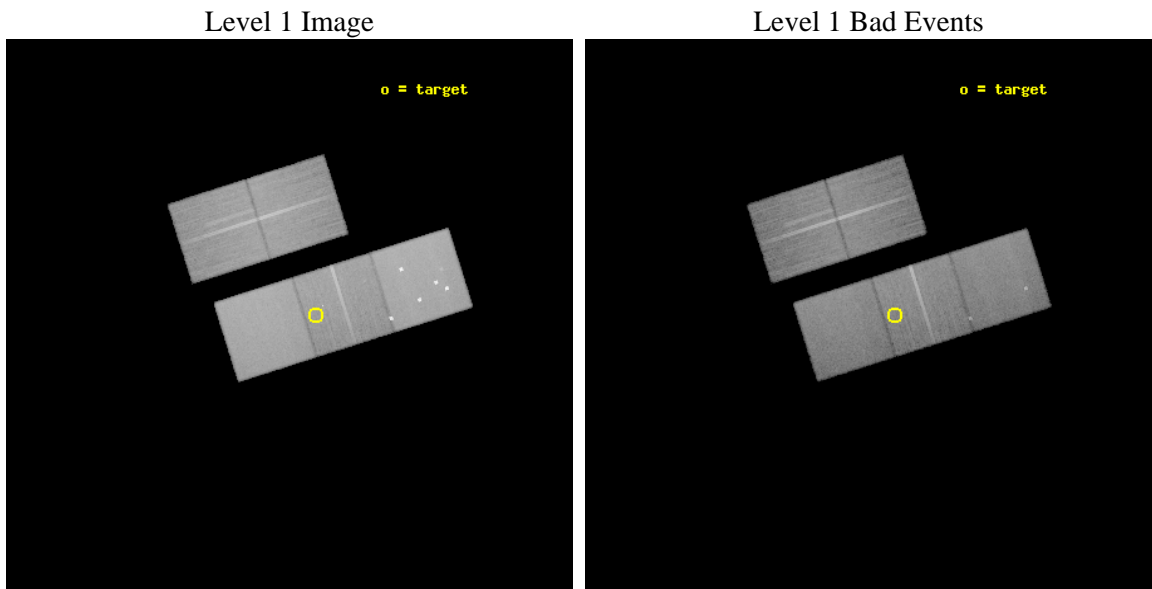
seq_num	200441	Sequence number
obs_id	7428	Observation id
title	The Full Picture of Magnetic Activity in Ultracool Dwarfs: Simultaneous Observations of Coronae and Chromospheres	Proposal title
observer	Prof. Edo Berger	Principal investigator
object	VB10	Source name
dtcycle	0	
cycle	P	events from which exps? Prim/Second/Both
ra_targ	289.240417	Observer's specified target RA [deg]
dec_targ	5.15	Observer's specified target Dec [deg]
ra_nom	289.2875141343	Nominal RA [deg]
dec_nom	5.1367235442829	Nominal Dec [deg]
roll_nom	162.45893684051	Nominal Roll [deg]
revision	2	Processing version of data
ontime	29679.359317422	Sum of GTIs [s]
livetime	29291.576638313	Livetime [s]
ontime2	29676.218307376	Sum of GTIs [s]
ontime3	29676.218247652	Sum of GTIs [s]
ontime5	29682.500228286	Sum of GTIs [s]
ontime6	29679.359317422	Sum of GTIs [s]
ontime7	29682.500228286	Sum of GTIs [s]
l2events	436937	Number of level 2 events



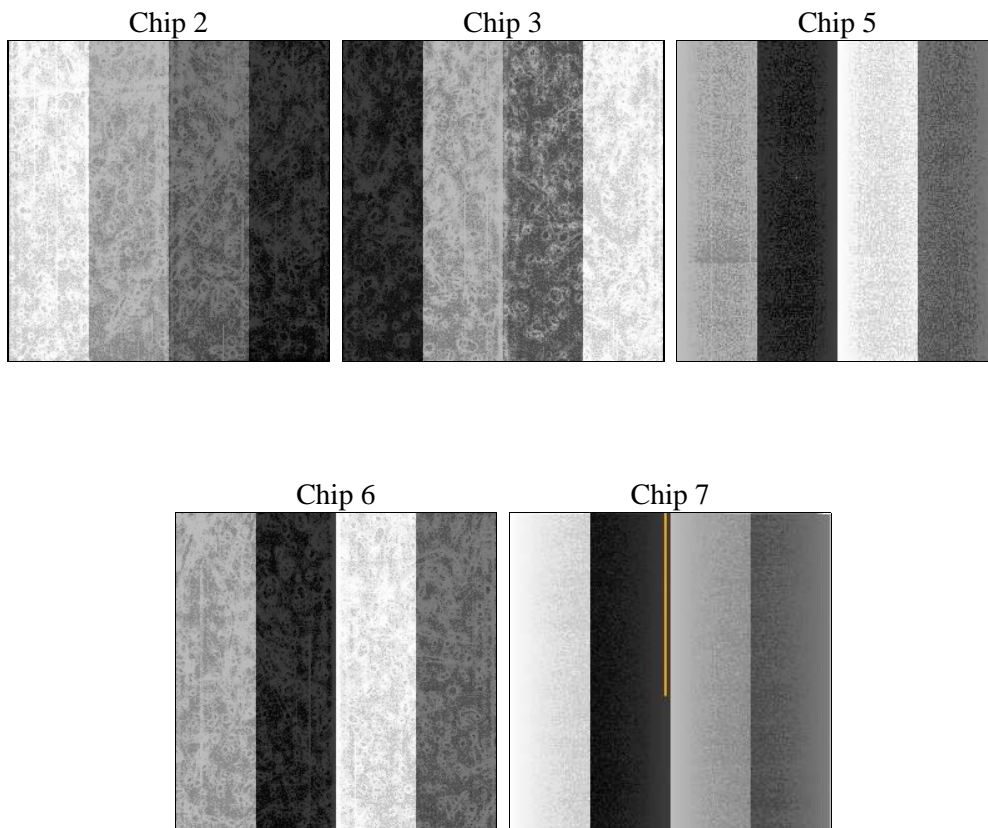
2 OBI

2.1 OBI

2.1.1 Images



2.1.2 Bias



2.1.3 Parameters

obi_num	0	Obi number	sched_exp_time	29500.000000	[s] Scheduled observation exposure time
ascdsver	8.4.4	Processing system revision	ontime	29679.359317422	Sum of GTIs [s]
caldbver	4.4.9	 	ontime2	29676.218307376	Sum of GTIs [s]
date	2012-04-27T13:50:37	Date and time of file creation	ontime3	29676.218247652	Sum of GTIs [s]
revision	2	Processing version of data	ontime5	29682.500228286	Sum of GTIs [s]
			ontime6	29679.359317422	Sum of GTIs [s]
			ontime7	29682.500228286	Sum of GTIs [s]
			l1events	1814059	Number of level 1 events

2.1.4 Events

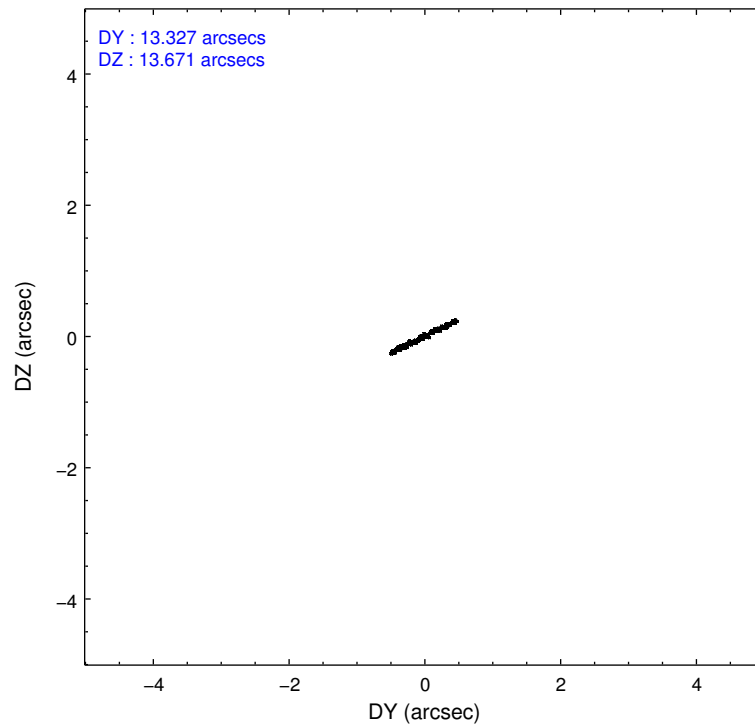
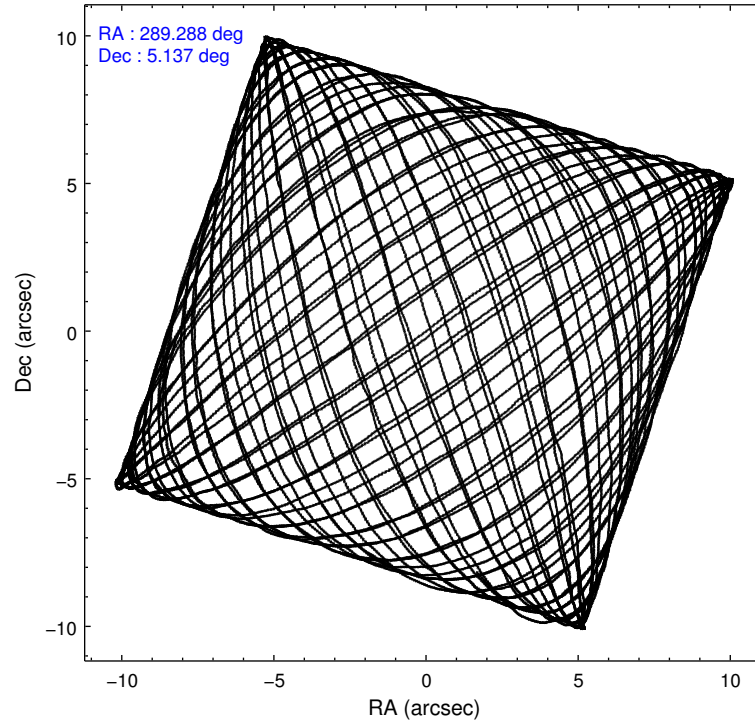
	ccd 2	ccd 3	ccd 5	ccd 6	ccd 7
level 1 events	302710	294305	492750	310699	413595
rejected events	269759	260869	261136	274773	251838
rejected %	89%	88%	52%	88%	60%

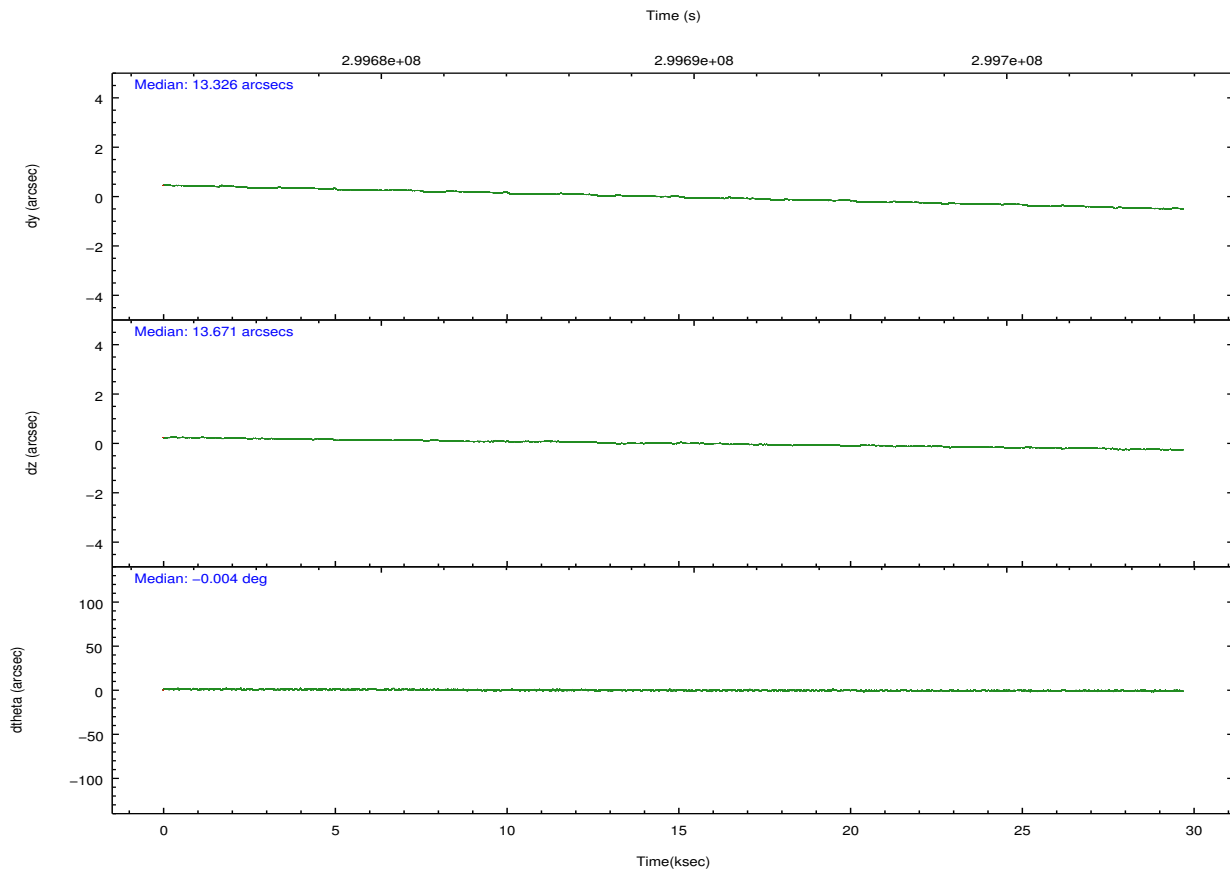
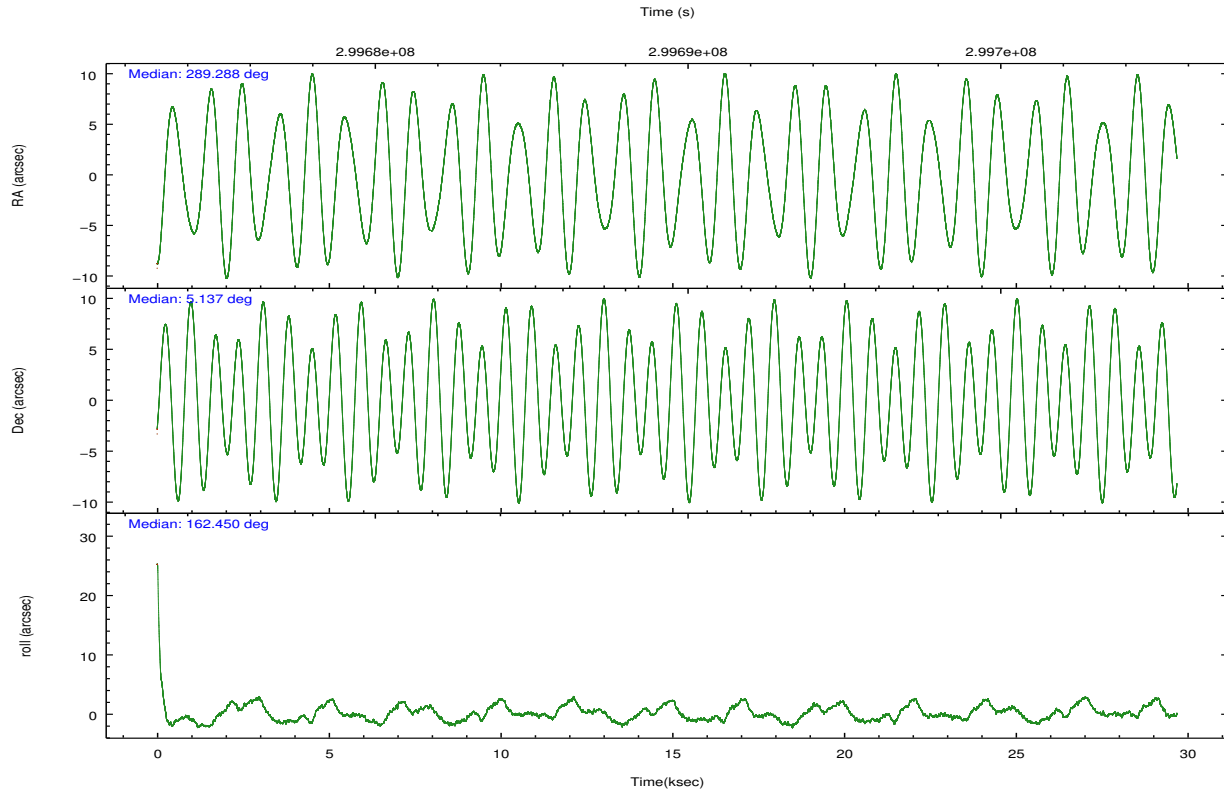
	ccd 2	ccd 3	ccd 5	ccd 6	ccd 7
grade 0 events	14663	15258	46560	15292	14399
	4%	5%	9%	4%	3%
grade 1 events	176	188	2590	156	435
	0%	0%	0%	0%	0%
grade 2 events	7451	6912	67726	8015	34309
	2%	2%	13%	2%	8%
grade 3 events	3282	3322	7849	3380	14428
	1%	1%	1%	1%	3%
grade 4 events	3381	3243	7376	3397	14176
	1%	1%	1%	1%	3%
grade 5 events	11499	13509	32181	14246	38801
	3%	4%	6%	4%	9%
grade 6 events	5674	6309	112351	7522	92400
	1%	2%	22%	2%	22%
grade 7 events	256584	245564	216117	258691	204647
	84%	83%	43%	83%	49%

2.2 Compared Parameters

Parameter	Planned	Actual	Parameter	Planned	Actual
Instrument	ACIS	ACIS	Obspar format version number	7	7
Detector	ACIS-23567	ACIS-23567	Obspar file type	PREDICTED	ACTUAL
Grating	NONE	NONE	Obspar update status	NONE	UPDATED
Data mode	VFAINT	VFAINT	Number of optional ACIS chips dropped	0	0
Observation mode	POINTING	POINTING	On-chip summing requested	N	N
[deg] Pointing RA	289.314228	289.2875141343048	Subarray requested	NONE	NONE
[deg] Pointing Dec	5.142983	5.136723544282896	Alternating exposures requested	N	N
[deg] Pointing Roll	162.299907	162.4589368405083	[s] Primary exposure time	0.000000	3.1
[s] Window start time (MET)	297043265.184000	297043265.184000			
[s] Window stop time (MET)	304992065.184000	304992065.184000			
[mm] SIM focus pos	-0.684267	-0.6828225247311905			
[mm] SIM defocus	0	0.001444936568705701			
[mm] SIM translation stage pos	-190.132523	-190.1400660498719			
[mm] SIM translation stage offset	0	0.00754346686406393			
[s] Observation start time (MET)	299674672.184000	299672965.63913			
Observation start date	2007-07-01T10:56:47	2007-07-01T10:29:25			
[s] Observation end time (MET)	299704172.184000	299704900.54066			
Observation end date	2007-07-01T19:08:27	2007-07-01T19:21:40			
Read mode	TIMED	TIMED			

2.3 Aspect



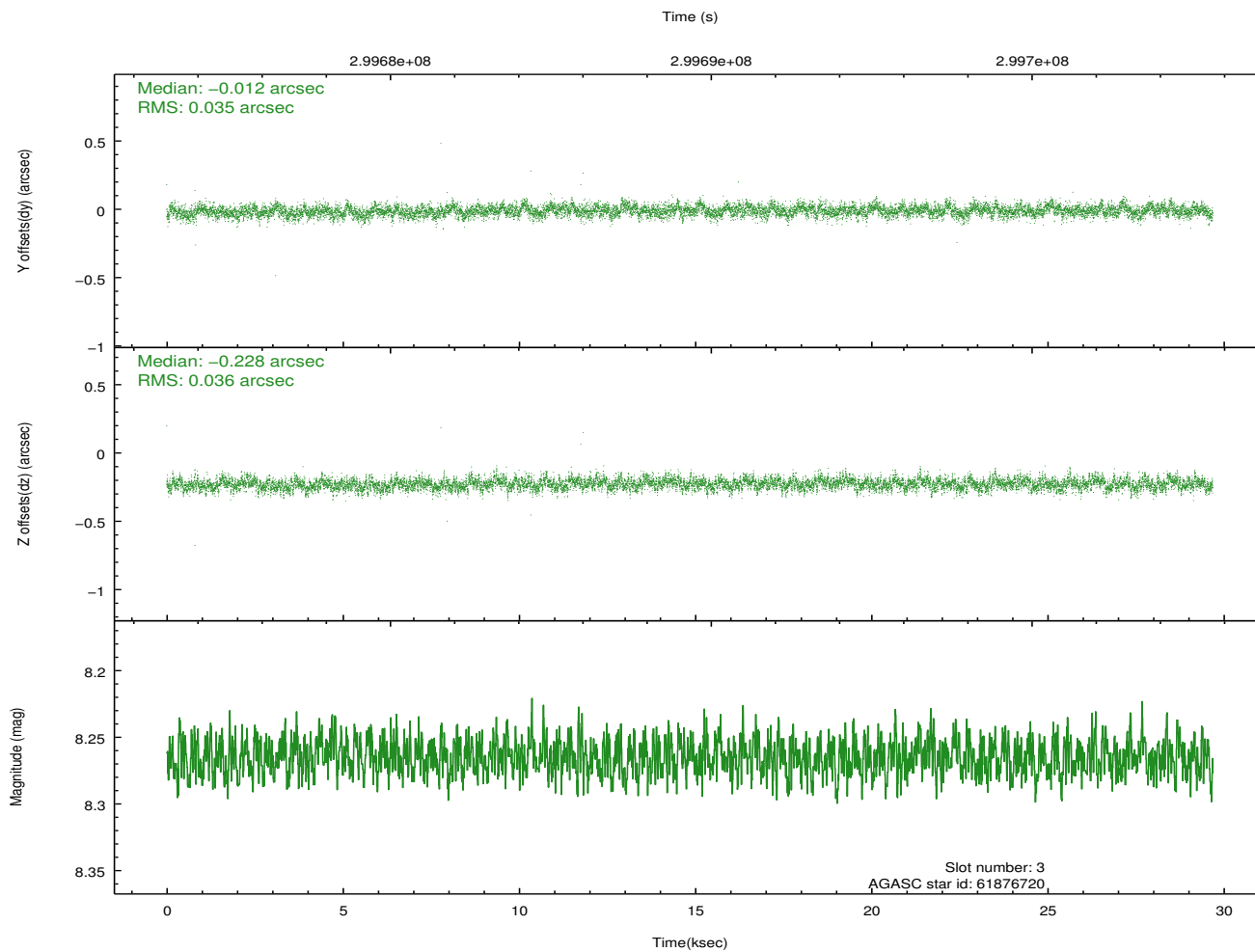
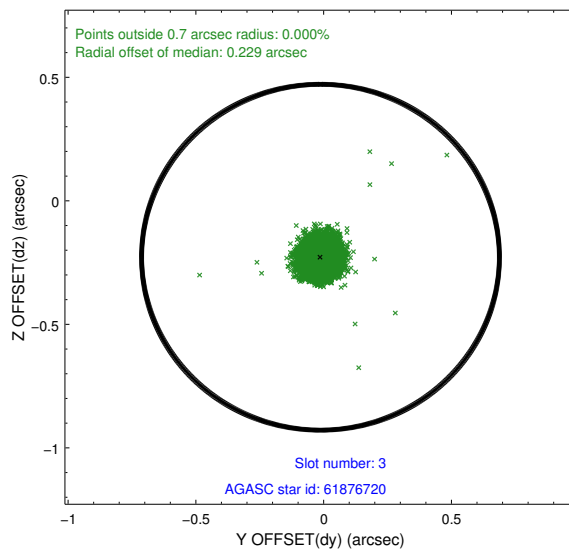
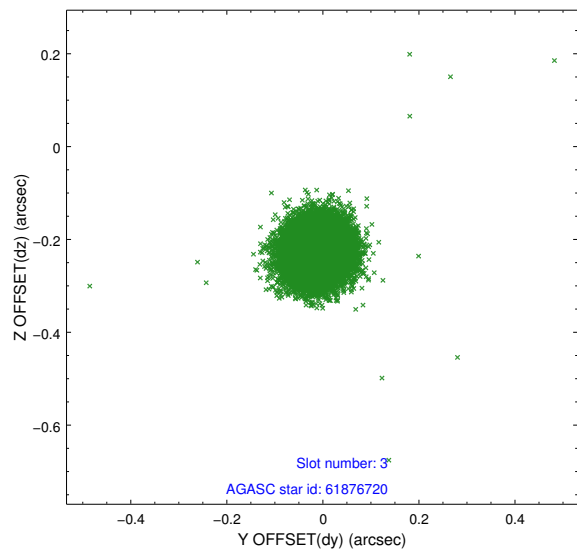


Slot Statistics

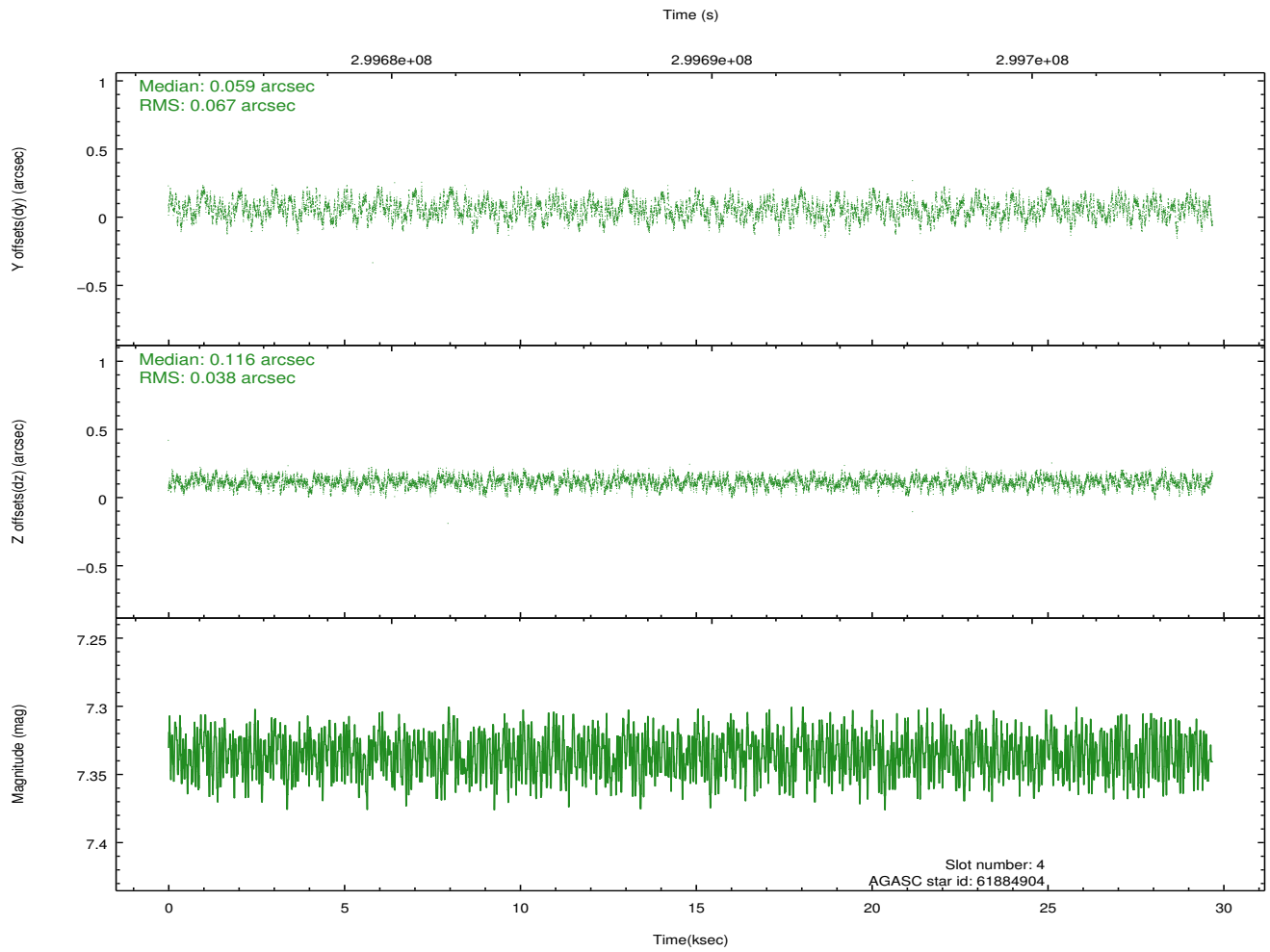
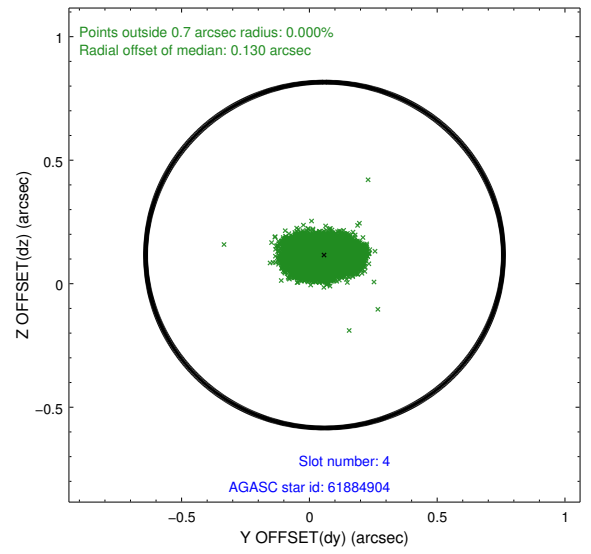
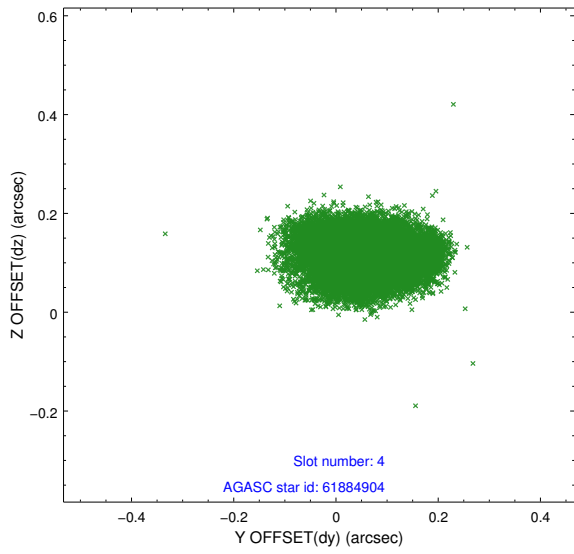
slot	status	id	mag	n_pts	med_dy	med_dz	dr1	dr2	ra	dec	mean_y	mean_z
0	FID	ACIS-S-2	7.10	7241	-0.105	-0.072	0.013	0.024	0.000000	0.000000	-766.35	-1735.08
1	FID	ACIS-S-4	7.19	7242	0.125	0.046	0.012	0.018	0.000000	0.000000	2147.13	173.43
2	FID	ACIS-S-6	7.33	7242	-0.049	0.034	0.010	0.016	0.000000	0.000000	395.80	810.90
3	GUIDE	61876720	8.27	14477	-0.012	-0.228	0.052	0.085	289.011366	5.192818	1089.30	159.16
4	GUIDE	61884904	7.34	14482	0.059	0.116	0.083	0.134	289.597127	5.131045	-979.30	-267.72
5	GUIDE	61890864	9.11	14472	0.055	-0.154	0.090	0.147	289.620015	4.548883	-1695.64	1703.49
6	GUIDE	62408720	8.68	14469	-0.166	0.043	0.093	0.154	289.272224	5.771976	832.12	-2110.91
7	GUIDE	62405800	8.45	14478	0.068	0.226	0.071	0.113	289.113398	5.901791	1516.54	-2383.33

2.4 Star Slots

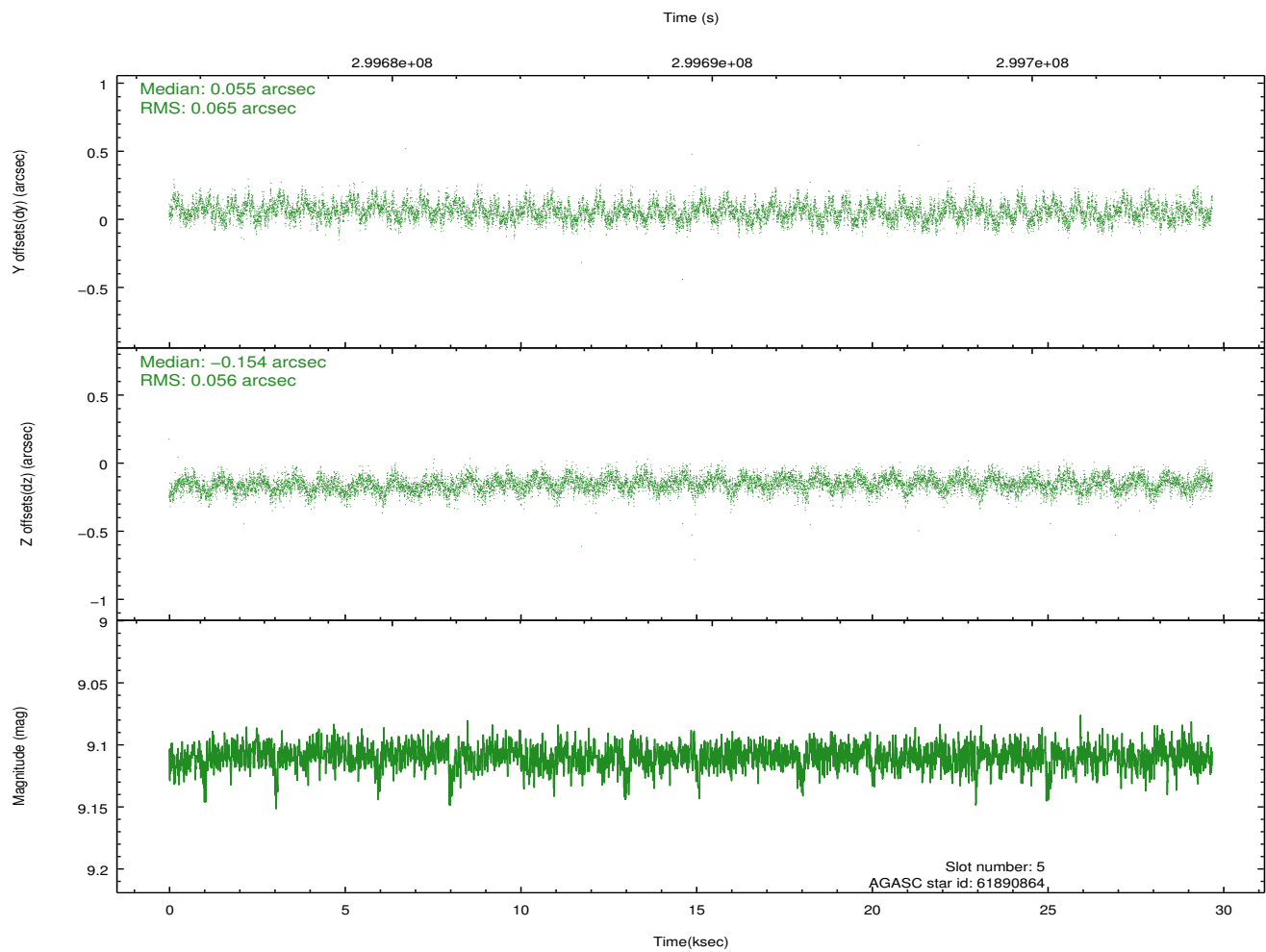
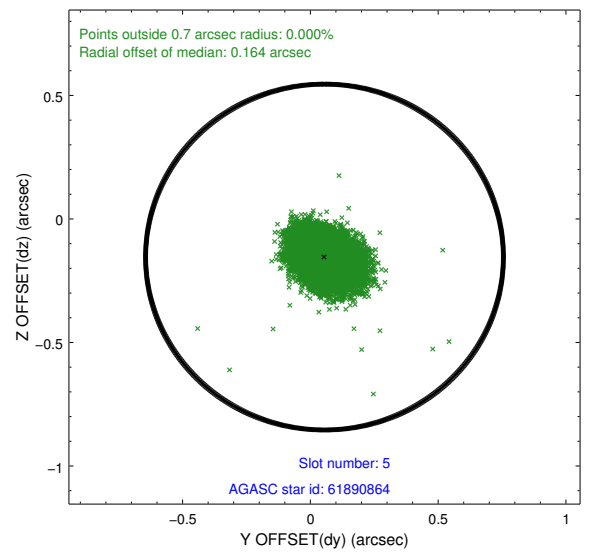
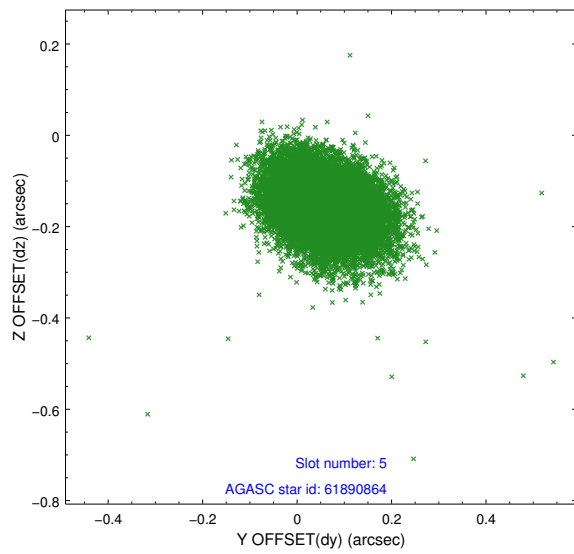
2.4.1 Slot 3



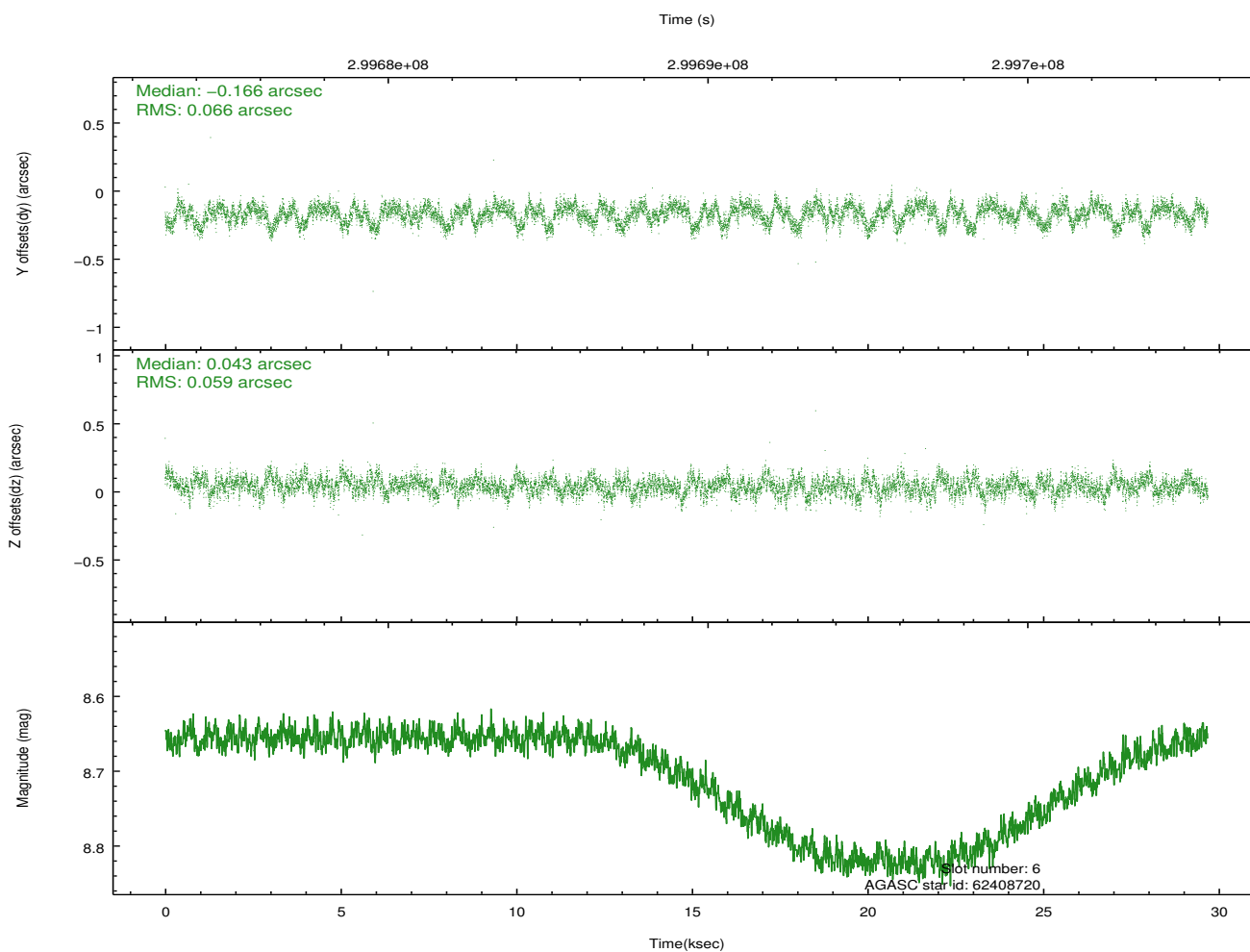
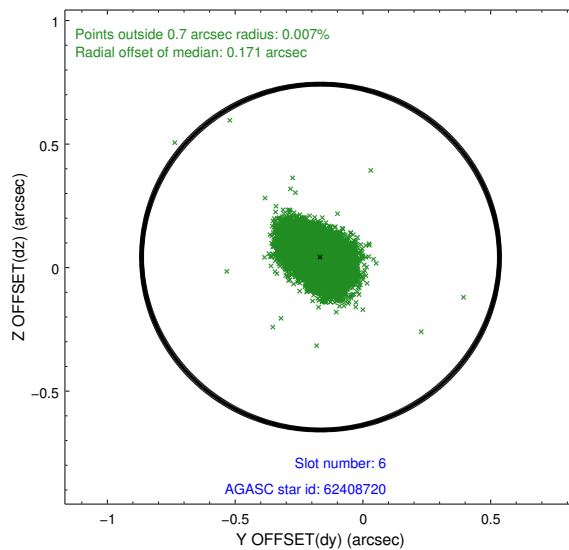
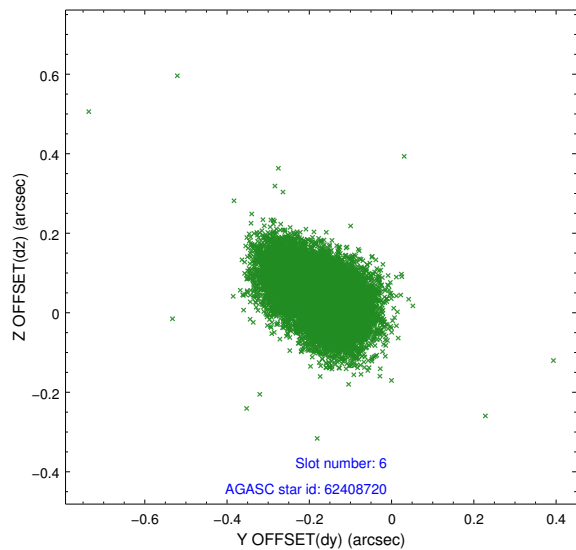
2.4.2 Slot 4



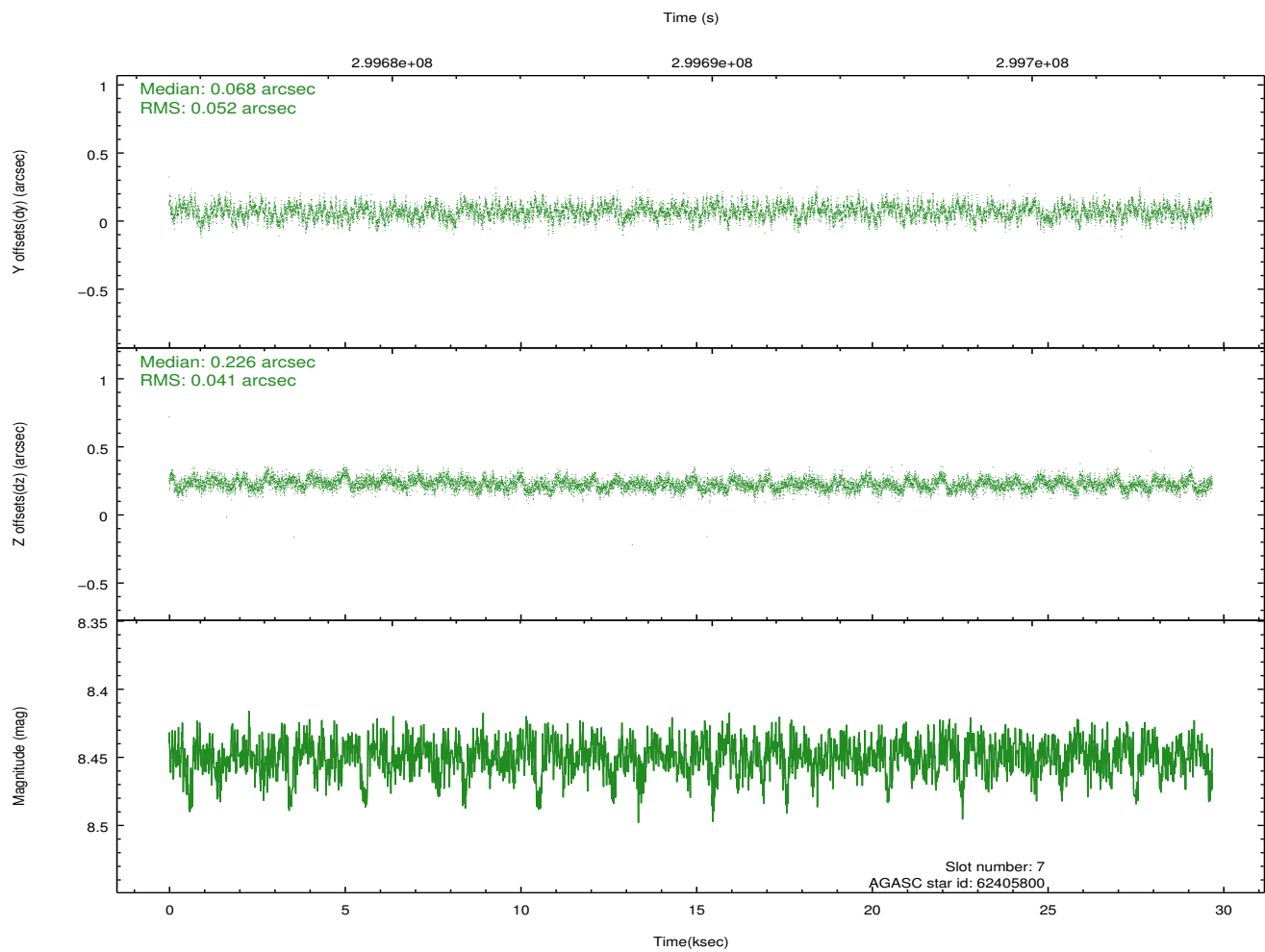
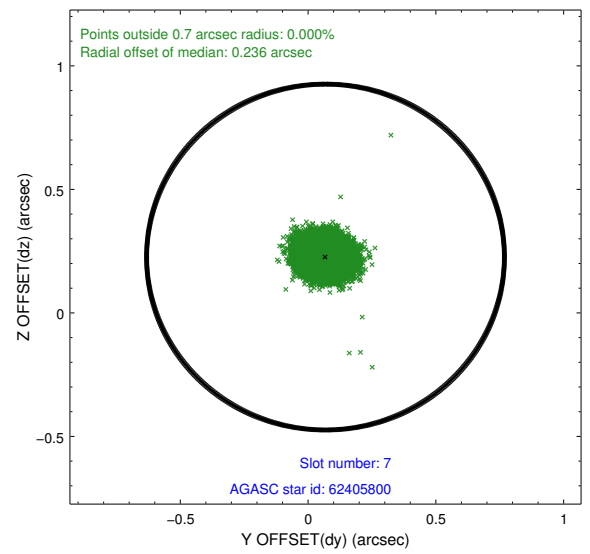
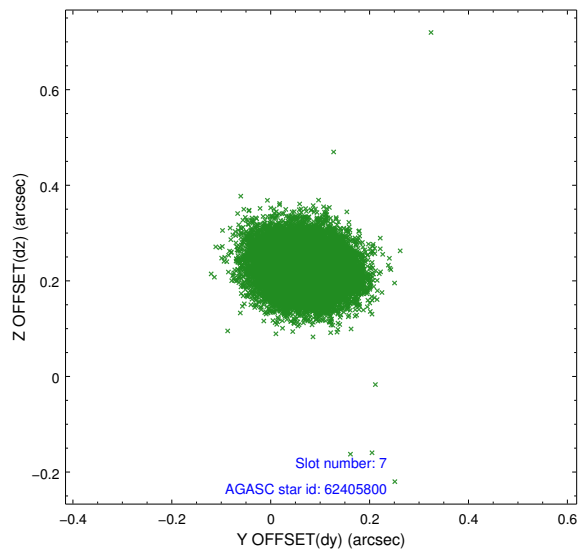
2.4.3 Slot 5



2.4.4 Slot 6

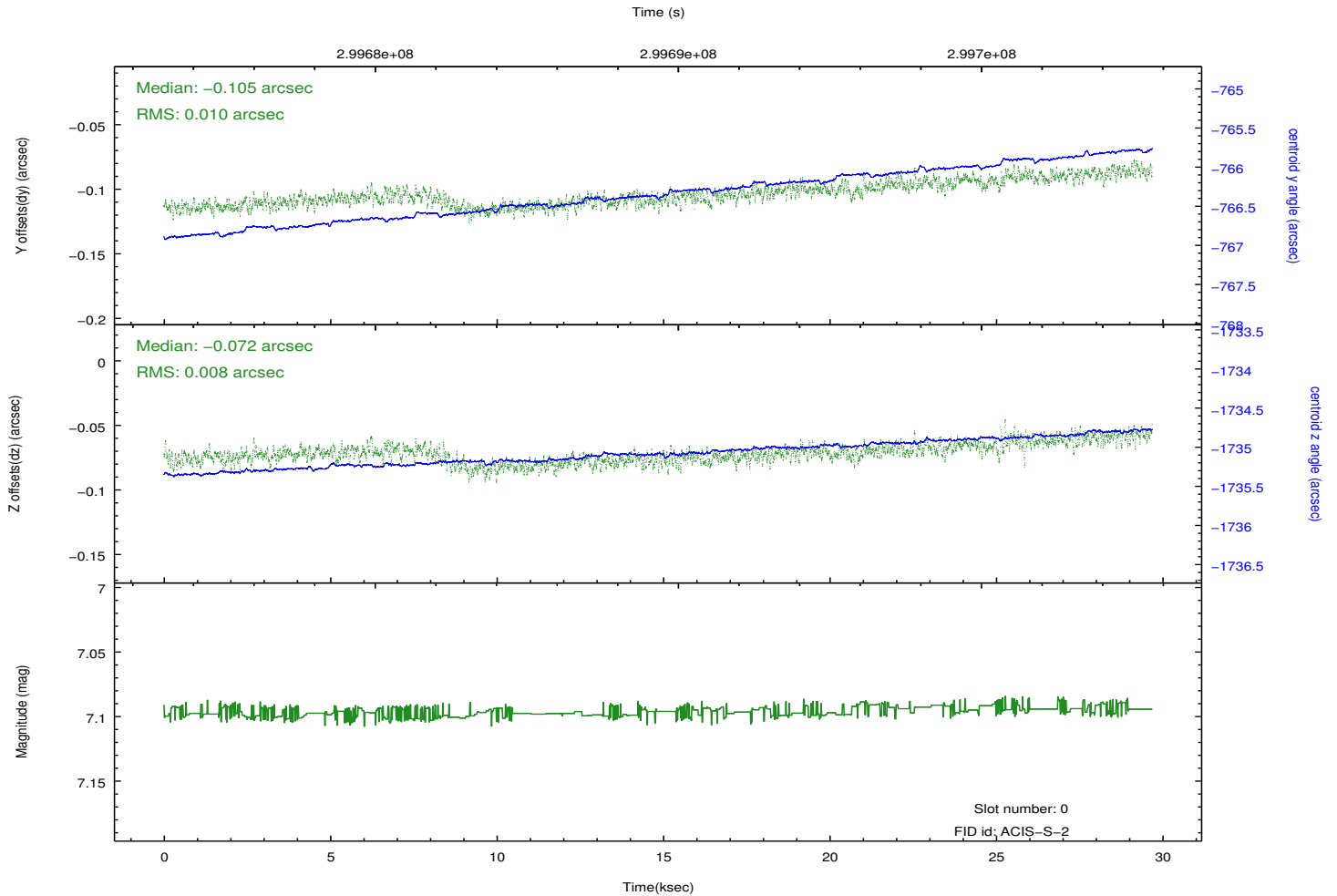
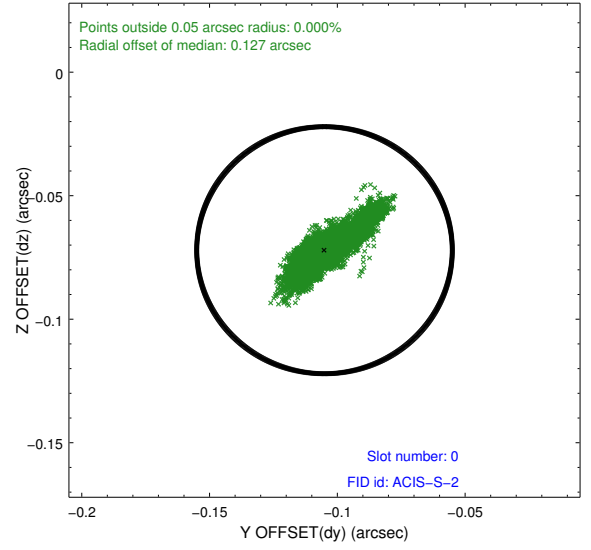
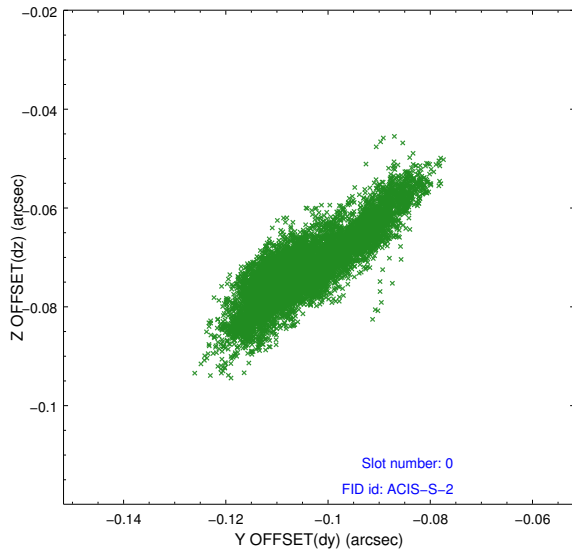


2.4.5 Slot 7

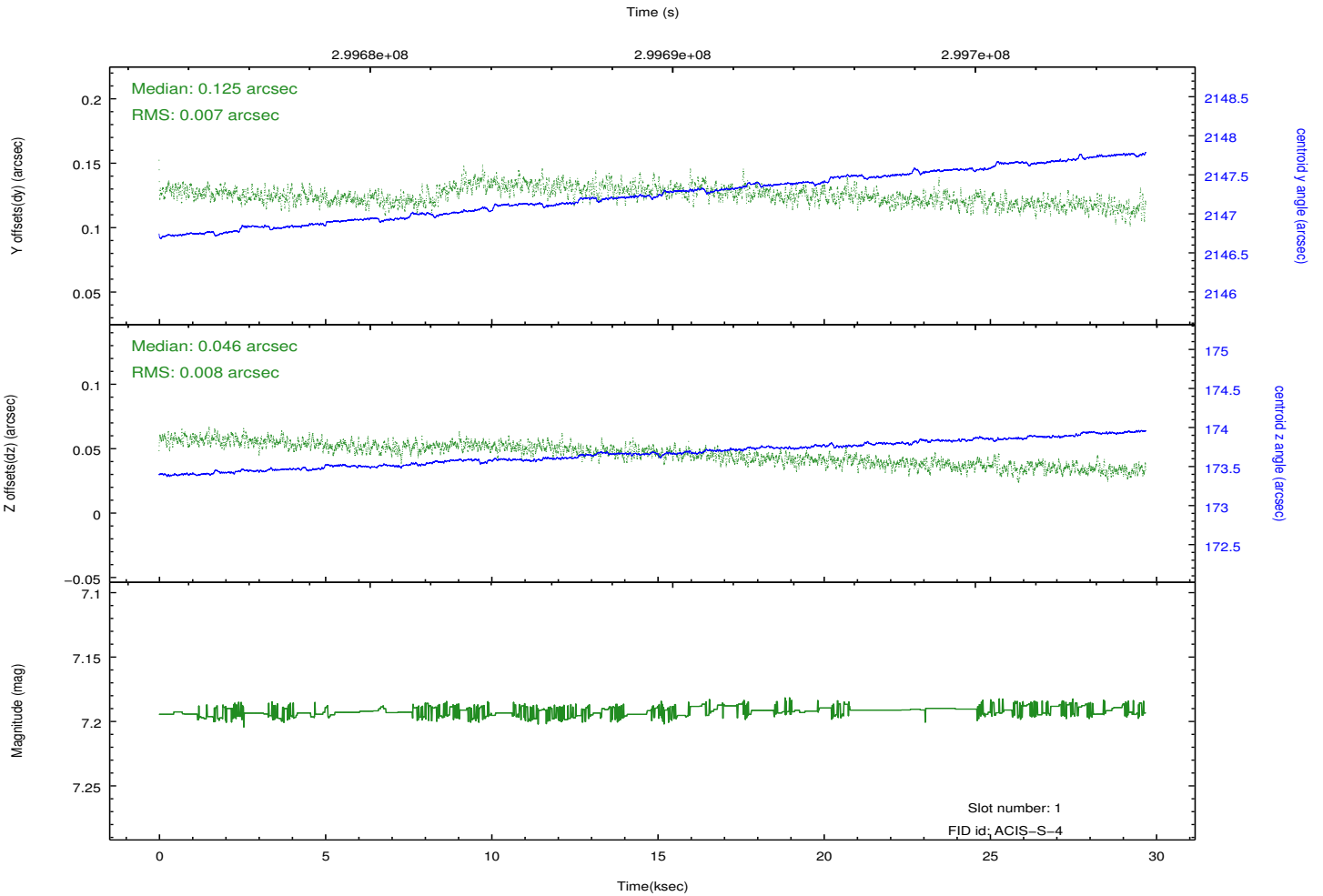
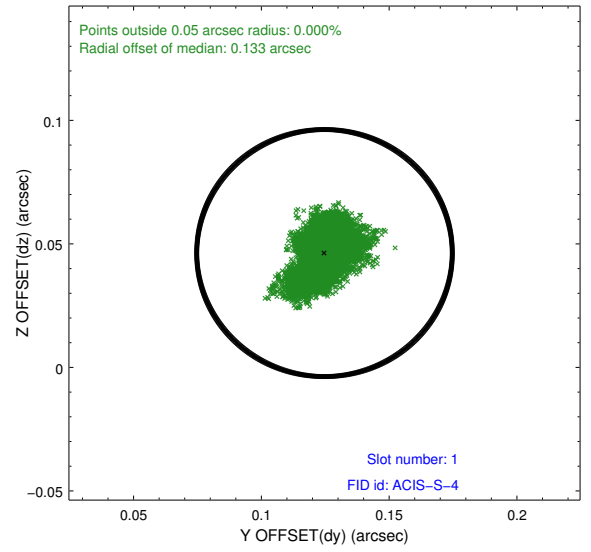
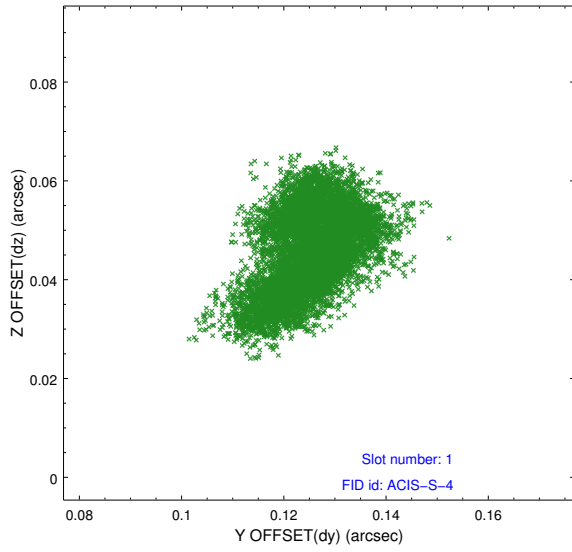


2.5 FID Slots

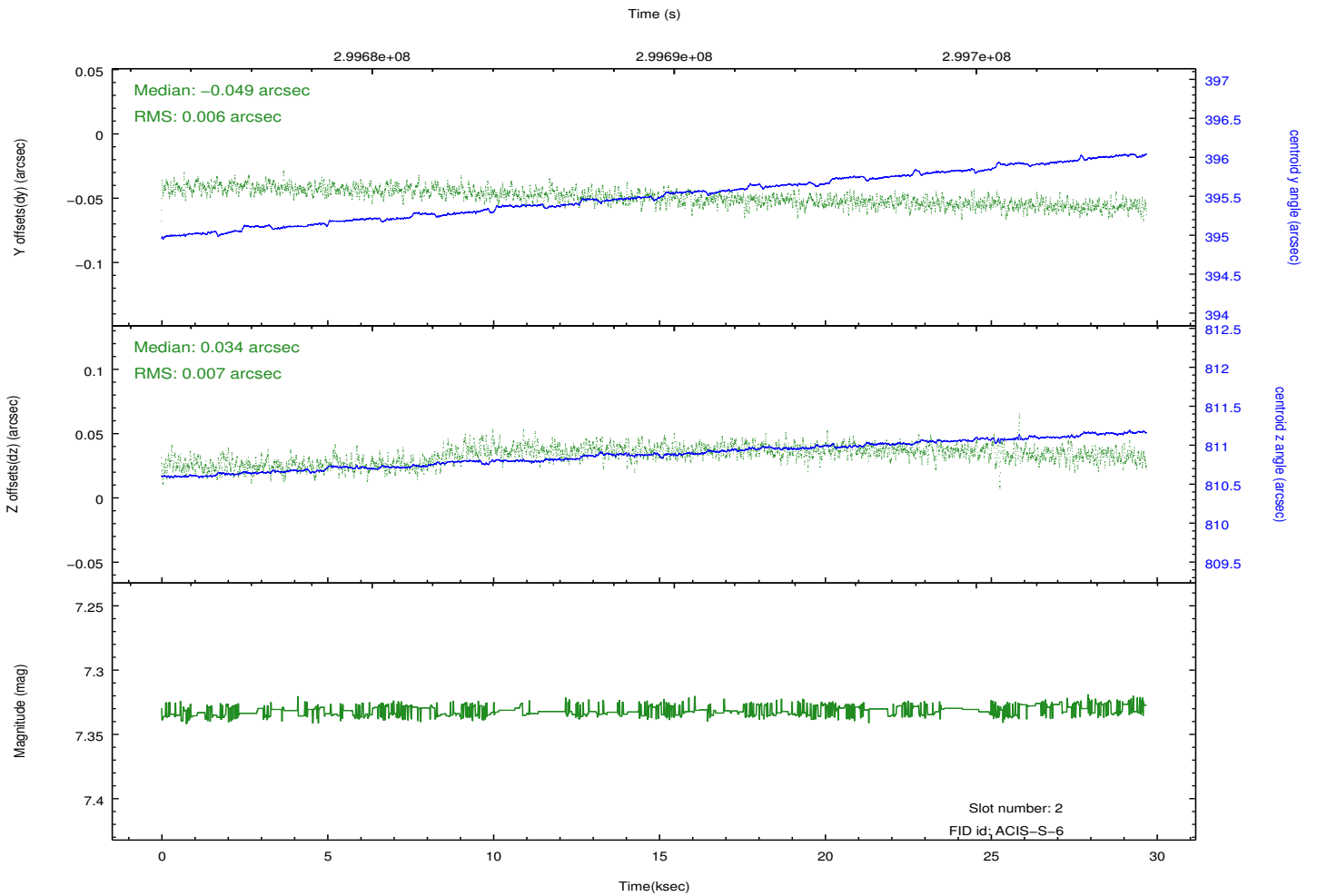
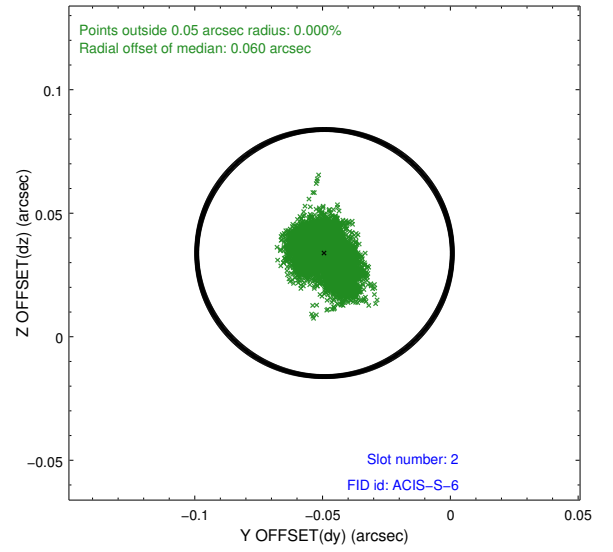
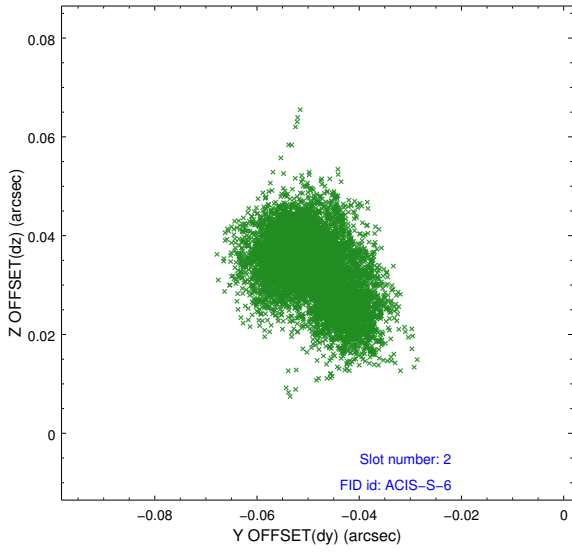
2.5.1 Slot 0



2.5.2 Slot 1



2.5.3 Slot 2



A Summary

A.1 Status

V&V Scientist	Jen Lauer
V&V Date (YYYY-MM-DD)	2012.04.27
V&V Edition	1
V&V Disposition and Status	OK
V&V Charge Time	29.6793593

A.2 Comments

Joint with VLA and NOAO. Time constraint met. By observer request, target is placed on a front-illuminated chip rather than the usual back-illuminated chip.