

V&V Reference Report

L2 ASCDS Version : 8.4.4

Observation 7728 - L2 Version 2
Chandra X-Ray Center

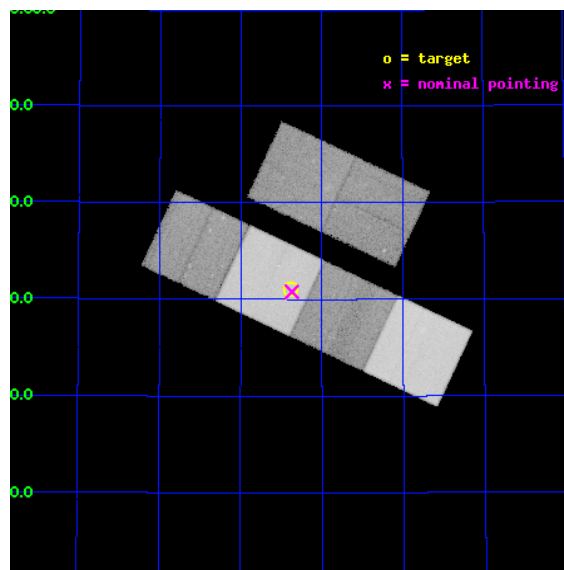
L2 Processing Date : Apr 25 2012

Contents

1	Front	2
2	OBI	3
2.1	OBI	3
2.1.1	Images	3
2.1.2	Bias	3
2.1.3	Parameters	4
2.1.4	Events	4
2.2	Compared Parameters	5
2.3	Aspect	6
2.4	Star Slots	9
2.4.1	Slot 3	9
2.4.2	Slot 4	10
2.4.3	Slot 5	11
2.4.4	Slot 6	12
2.4.5	Slot 7	13
2.5	FID Slots	14
2.5.1	Slot 0	14
2.5.2	Slot 1	15
2.5.3	Slot 2	16
A	Summary	17
A.1	Status	17
A.2	Comments	17

1 Front

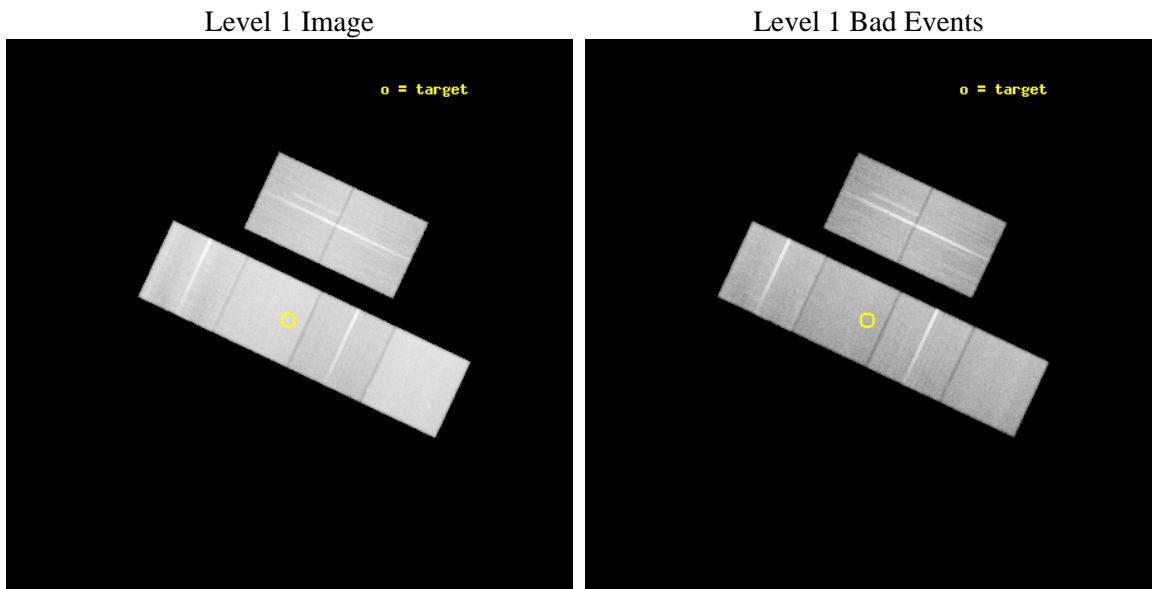
seq_num	701396	Sequence number
obs_id	7728	Observation id
title	NGC 5905: the late phase of the tidal disruption of a star by a SMBH	
observer	Dr. Peter Predehl	Principal investigator
object	NGC5905	Source name
dtycycle	0	
cycle	P	events from which exps? Prim/Second/Both
ra_targ	228.847083	Observer's specified target RA [deg]
dec_targ	55.517167	Observer's specified target Dec [deg]
ra_nom	228.84239193603	Nominal RA [deg]
dec_nom	55.5131078946	Nominal Dec [deg]
roll_nom	205.1604976619	Nominal Roll [deg]
revision	2	Processing version of data
ontime	44946.774730682	Sum of GTIs [s]
livetime	44377.631605344	Livetime [s]
ontime2	44943.574800432	Sum of GTIs [s]
ontime3	44946.651610672	Sum of GTIs [s]
ontime5	44946.733690679	Sum of GTIs [s]
ontime6	44946.692650676	Sum of GTIs [s]
ontime7	44946.774730682	Sum of GTIs [s]
ontime8	44943.369669974	Sum of GTIs [s]
l2events	711918	Number of level 2 events



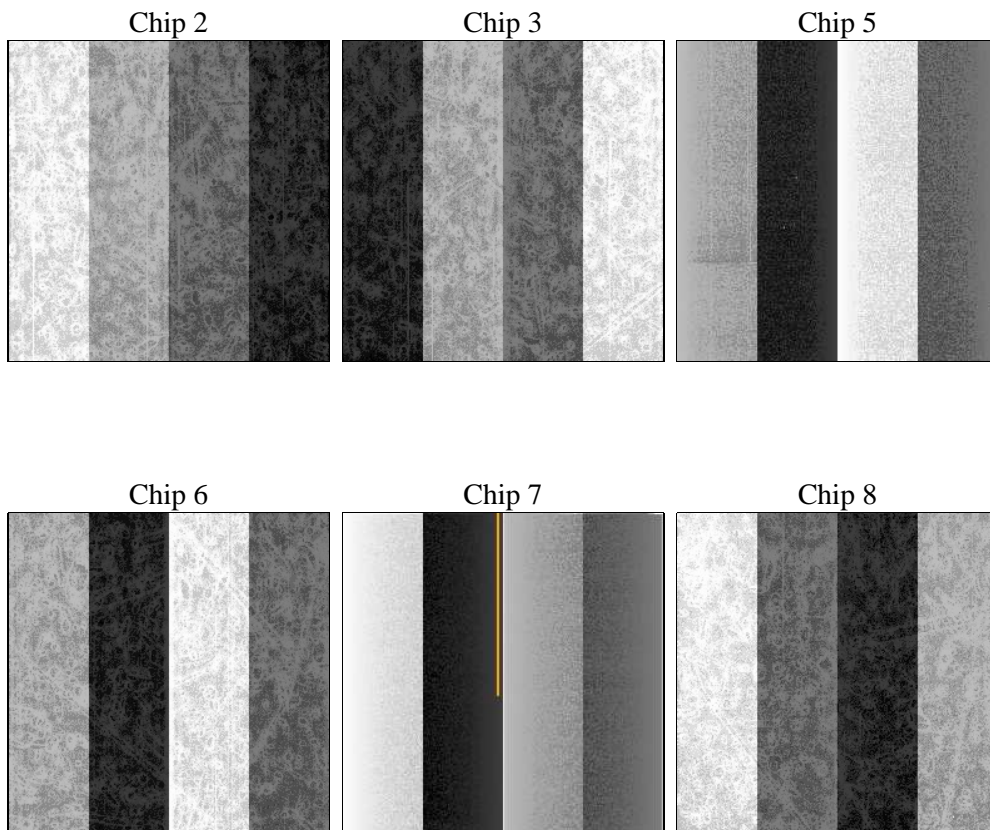
2 OBI

2.1 OBI

2.1.1 Images



2.1.2 Bias



2.1.3 Parameters

obi_num	0	Obi number	sched_exp_time	45000.000000	[s] Scheduled observation exposure time
ascdsver	8.4.4	Processing system revision	ontime	44946.774730682	Sum of GTIs [s]
caldbver	4.4.9	 	ontime2	44943.574800432	Sum of GTIs [s]
date	2012-04-25T22:13:27	Date and time of file creation	ontime3	44946.651610672	Sum of GTIs [s]
revision	2	Processing version of data	ontime5	44946.733690679	Sum of GTIs [s]
			ontime6	44946.692650676	Sum of GTIs [s]
			ontime7	44946.774730682	Sum of GTIs [s]
			ontime8	44943.369669974	Sum of GTIs [s]
			l1events	3117727	Number of level 1 events

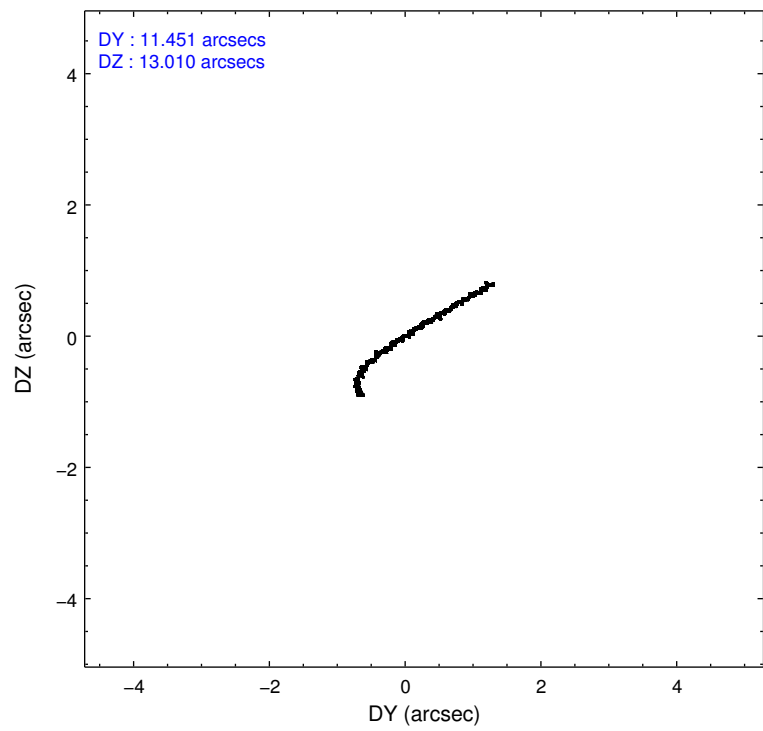
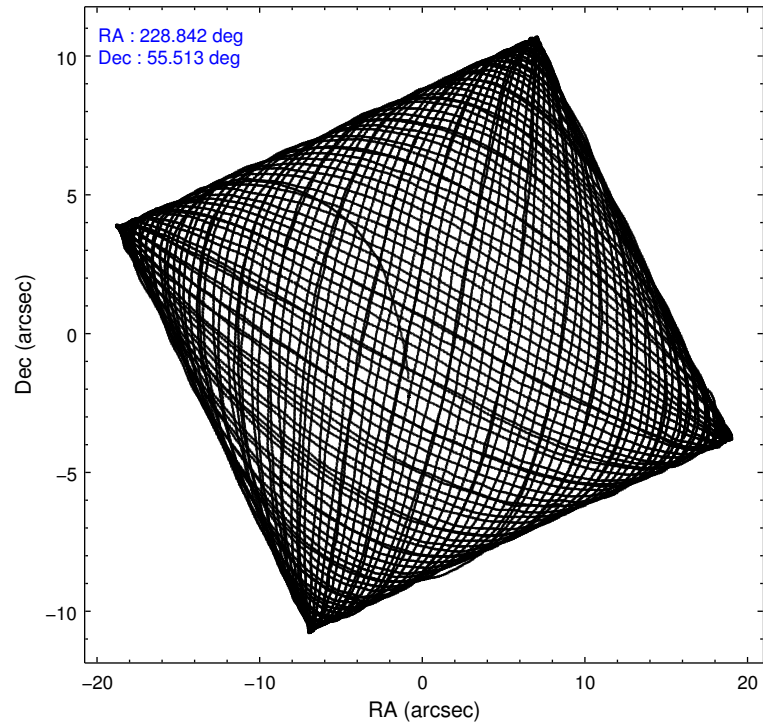
2.1.4 Events

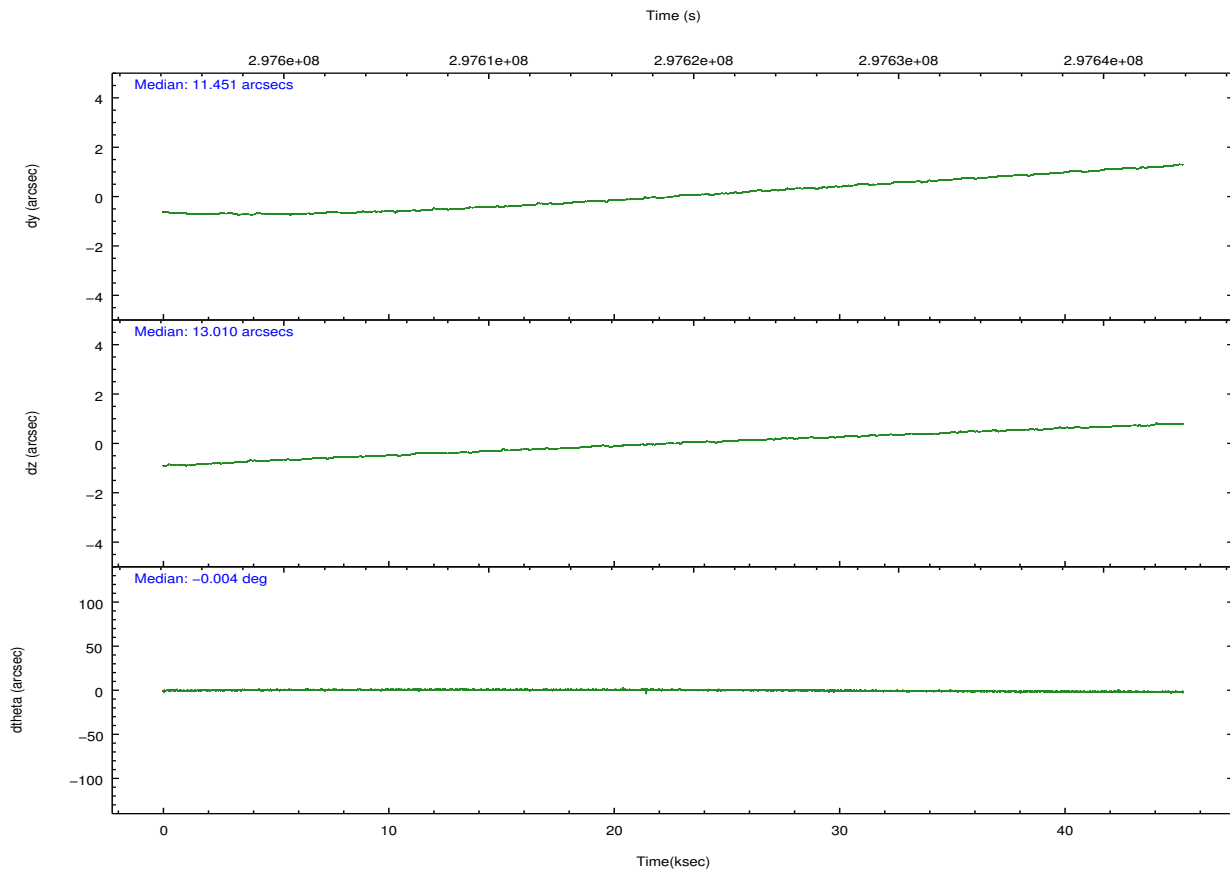
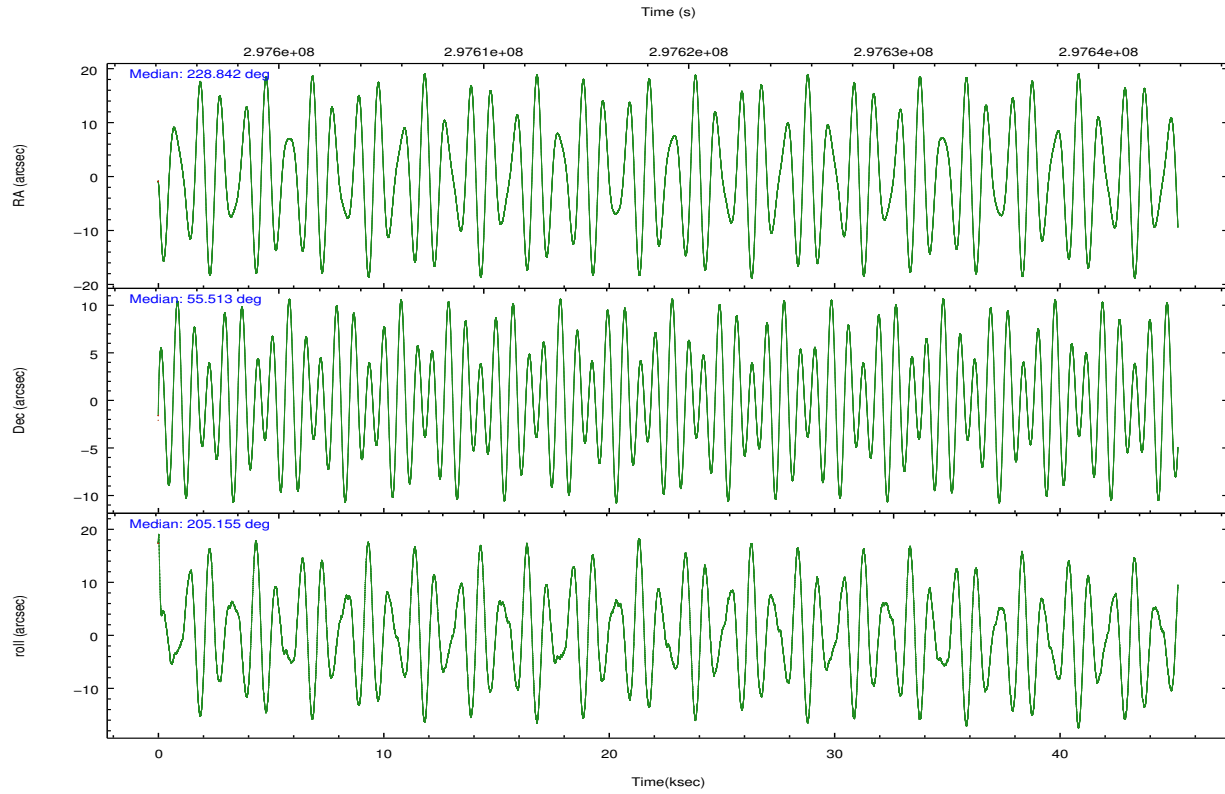
	ccd 2	ccd 3	ccd 5	ccd 6	ccd 7	ccd 8		ccd 2	ccd 3	ccd 5	ccd 6	ccd 7	ccd 8
level 1 events	455651	425357	651266	441117	596158	548178	grade 0 events	22453	22678	17555	19777	21319	38773
rejected events	404639	373661	358568	389178	348965	424609		4%	5%	2%	4%	3%	7%
rejected %	88%	87%	55%	88%	58%	77%	grade 1 events	301	296	953	244	648	423
								0%	0%	0%	0%	0%	0%
							grade 2 events	10728	10272	91227	11459	49595	27609
								2%	2%	14%	2%	8%	5%
							grade 3 events	4623	4845	10703	5043	21085	12855
								1%	1%	1%	1%	3%	2%
							grade 4 events	4690	4892	10548	4939	20816	12291
								1%	1%	1%	1%	3%	2%
							grade 5 events	17288	19784	46828	20162	55832	26834
								3%	4%	7%	4%	9%	4%
							grade 6 events	8527	9017	162702	10728	134410	32061
								1%	2%	24%	2%	22%	5%
							grade 7 events	387041	353573	310750	368765	292453	397332
								84%	83%	47%	83%	49%	72%

2.2 Compared Parameters

Parameter	Planned	Actual	Parameter	Planned	Actual
Instrument	ACIS	ACIS	Obspar format version number	7	7
Detector	ACIS-235678	ACIS-235678	Obspar file type	PREDICTED	ACTUAL
Grating	NONE	NONE	Obspar update status	NONE	UPDATED
Data mode	FAINT	FAINT	CCD I0 on	N	N
Observation mode	POINTING	POINTING	CCD I1 on	N	N
[deg] Pointing RA	228.869457	228.8423919360329	CCD I2 on	O1	Y
[deg] Pointing Dec	55.535766	55.51310789459954	CCD I3 on	O2	Y
[deg] Pointing Roll	204.981558	205.1604976618996	CCD S0 on	N	N
[mm] SIM focus pos	-0.684267	-0.6828225247311905	CCD S1 on	O3	Y
[mm] SIM defocus	0	0.001444936568705701	CCD S2 on	O5	Y
[mm] SIM translation stage pos	-190.132523	-190.145094680475	CCD S3 on	Y	Y
[mm] SIM translation stage offset	0	0.01257209746719923	CCD S4 on	O4	Y
[s] Observation start time (MET)	297596613.184000	297595626.22725	CCD S5 on	N	N
Observation start date	2007-06-07T09:42:28	2007-06-07T09:27:06	Number of optional ACIS chips dropped	0	0
[s] Observation end time (MET)	297641613.184000	297642286.79198	On-chip summing requested	N	N
Observation end date	2007-06-07T22:12:28	2007-06-07T22:24:46	Subarray requested	NONE	NONE
Read mode	TIMED	TIMED	Alternating exposures requested	N	N
			[s] Primary exposure time	0.000000	3.2

2.3 Aspect



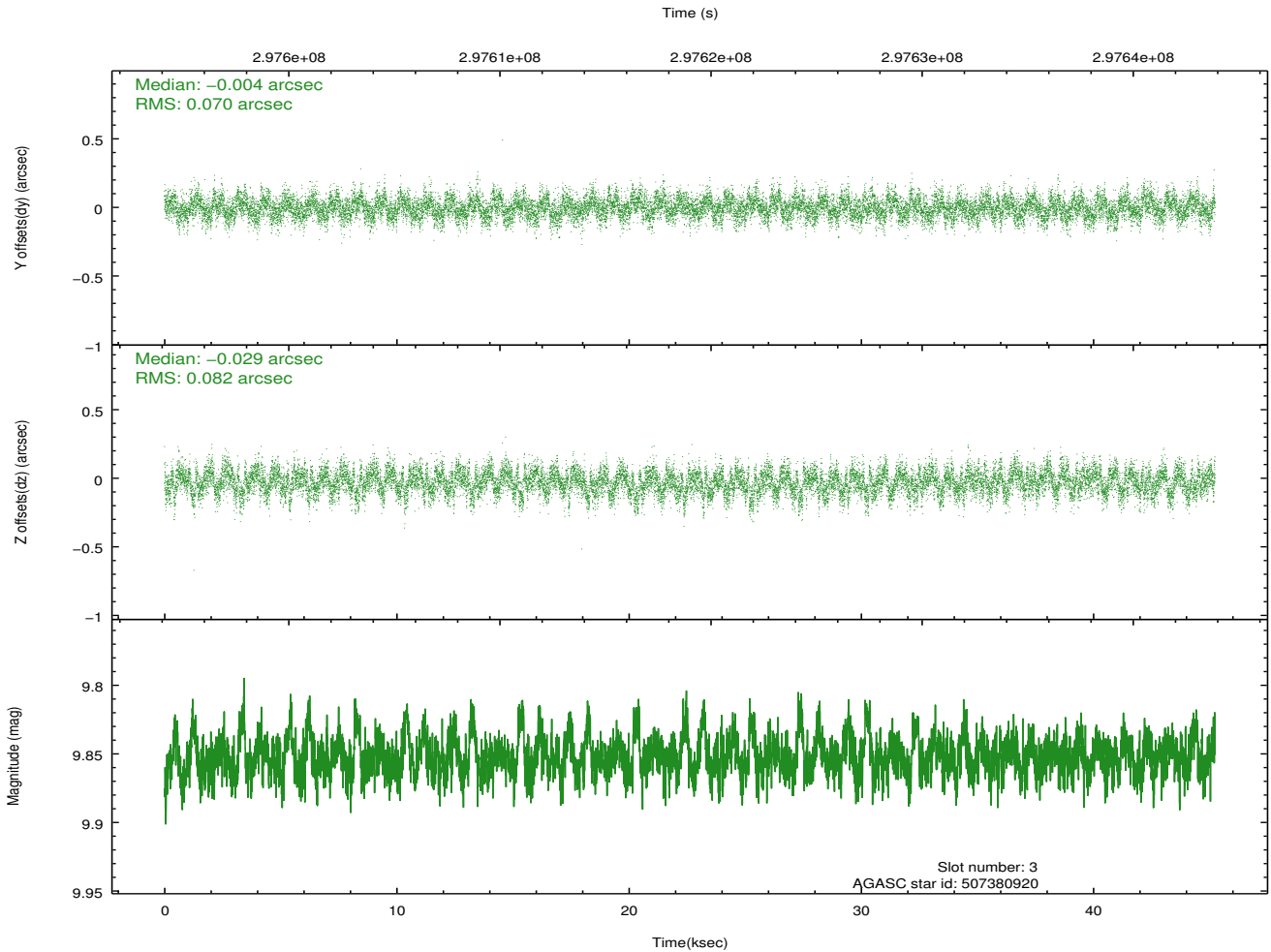
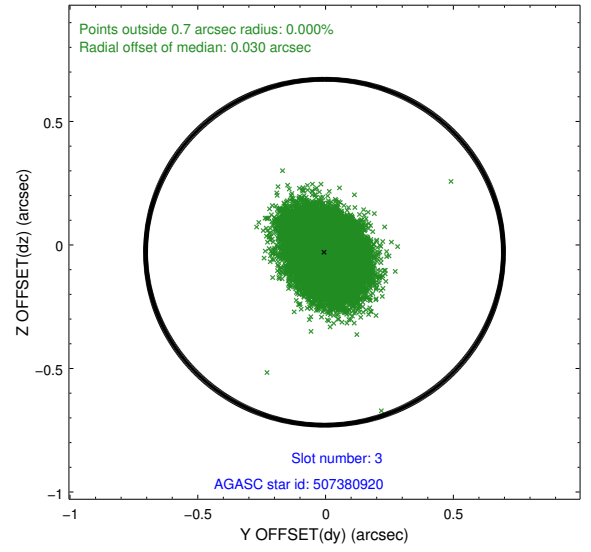
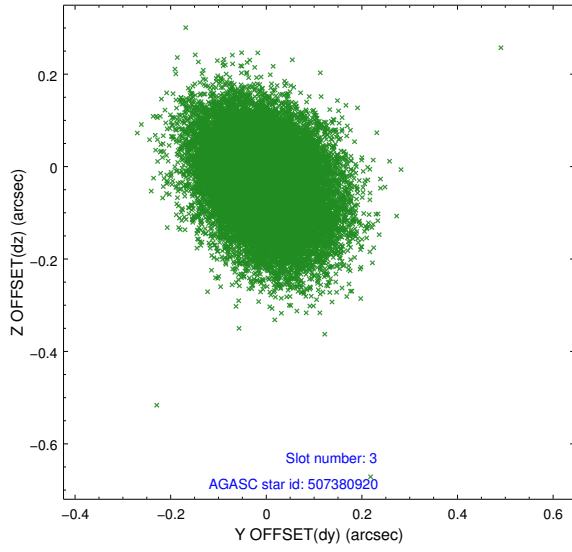


Slot Statistics

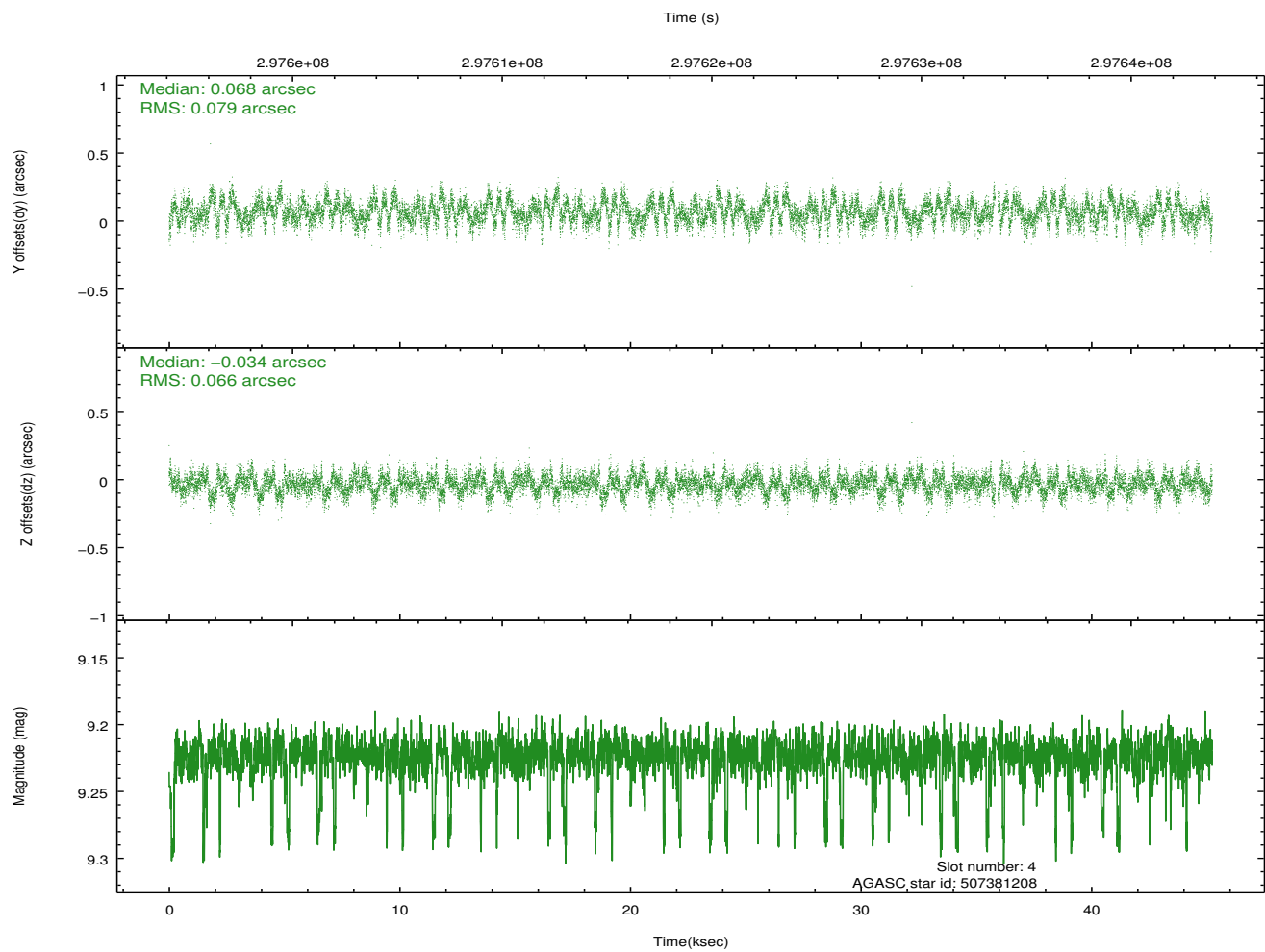
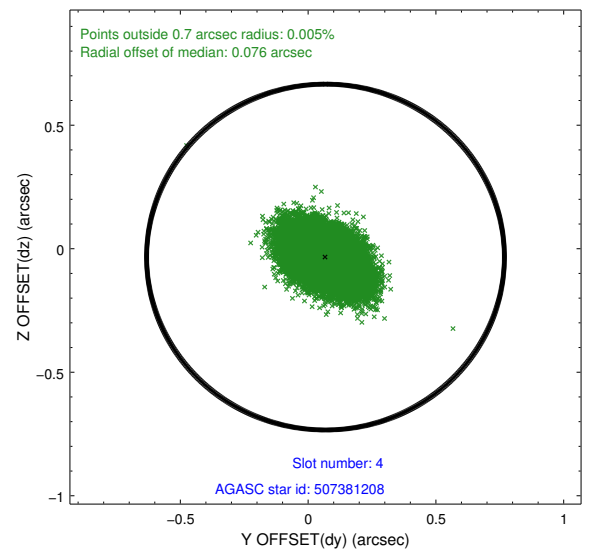
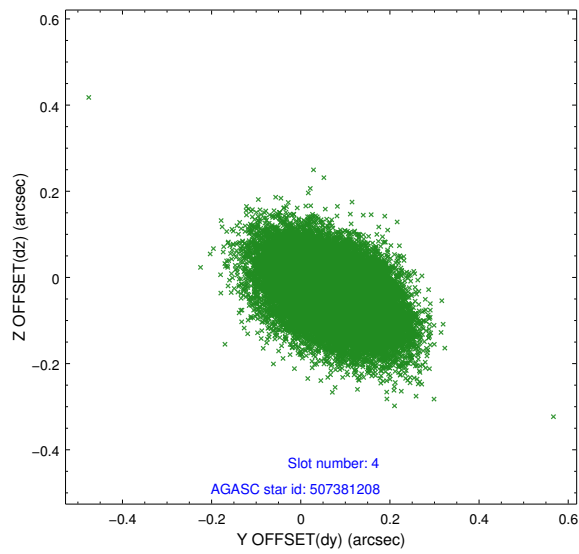
slot	status	id	mag	n_pts	med_dy	med_dz	dr1	dr2	ra	dec	mean_y	mean_z
0	FID	ACIS-S-2	7.09	11034	-0.030	-0.056	0.013	0.023	0.000000	0.000000	-764.45	-1734.26
1	FID	ACIS-S-4	7.19	11033	0.143	0.030	0.017	0.026	0.000000	0.000000	2149.01	174.29
2	FID	ACIS-S-5	7.22	11035	-0.140	0.034	0.014	0.022	0.000000	0.000000	-1817.39	167.99
3	GUIDE	507380920	9.85	22041	-0.004	-0.029	0.114	0.187	229.618284	55.312043	-1053.79	1371.45
4	GUIDE	507381208	9.22	21897	0.068	-0.034	0.109	0.180	228.099016	55.627478	1277.71	-969.72
5	GUIDE	507382224	8.46	22062	0.035	0.069	0.076	0.121	227.706518	55.422449	2318.12	-651.33
6	GUIDE	507382888	8.31	22060	-0.147	-0.002	0.069	0.112	227.987228	56.025159	860.52	-2356.41
7	GUIDE	507383608	8.41	22057	0.045	0.004	0.073	0.127	228.419739	56.118692	-68.79	-2285.68

2.4 Star Slots

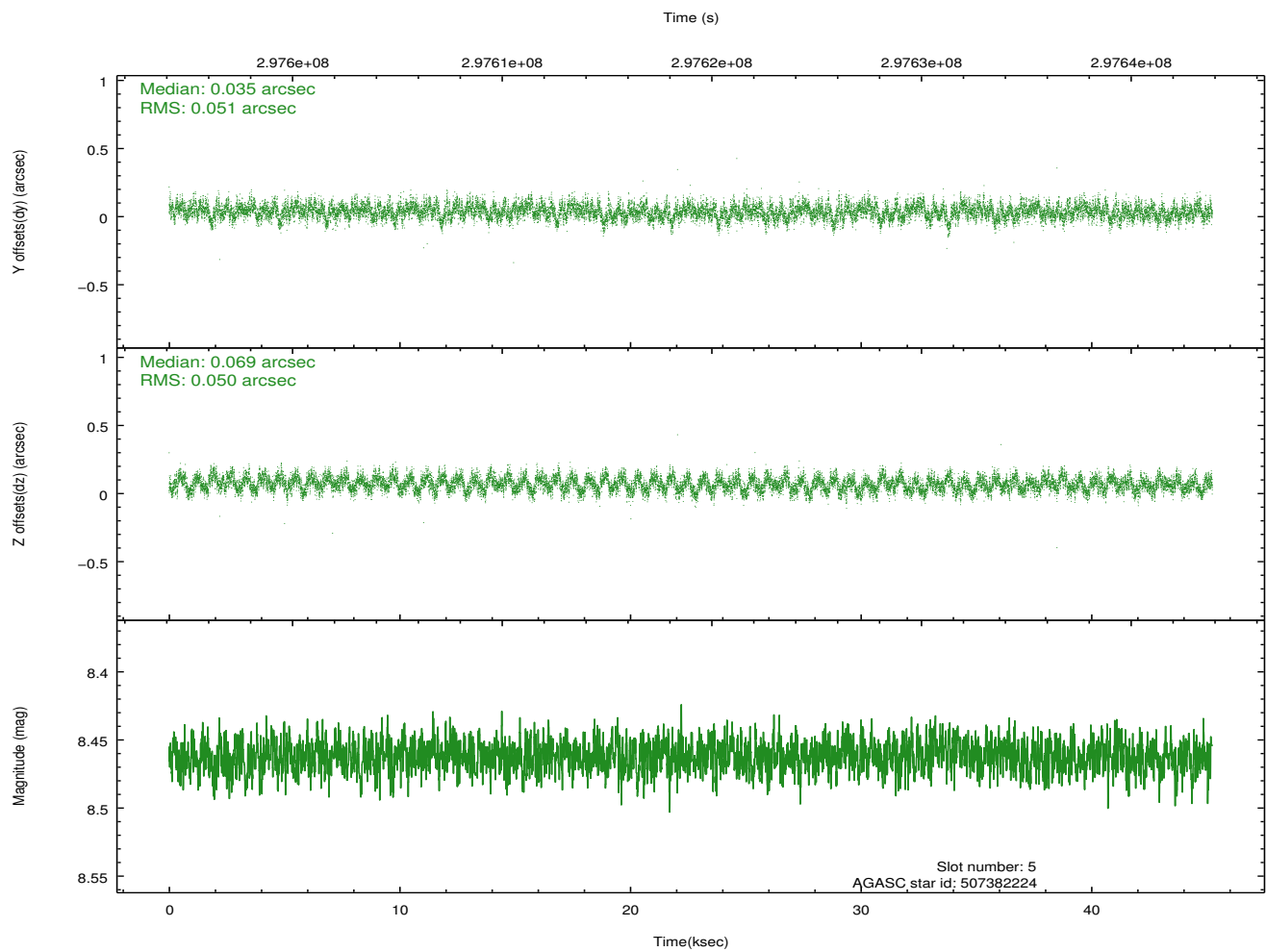
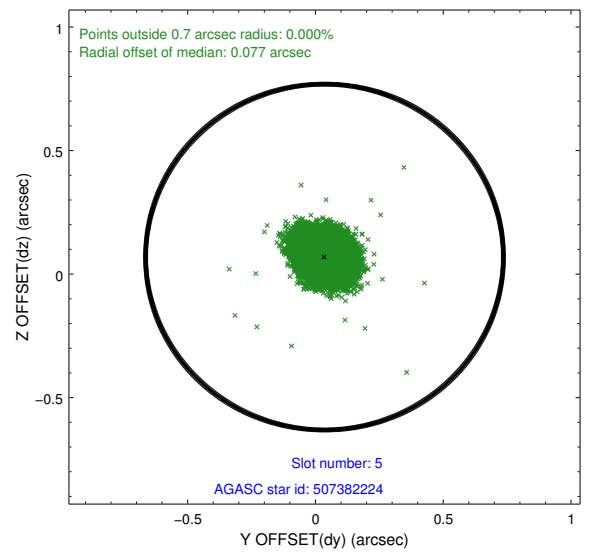
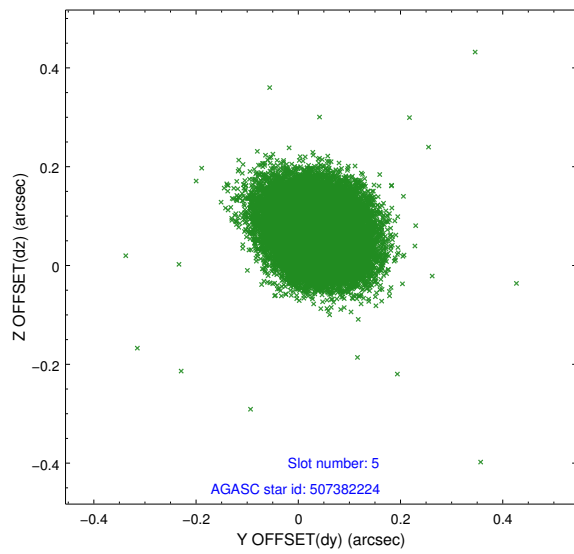
2.4.1 Slot 3



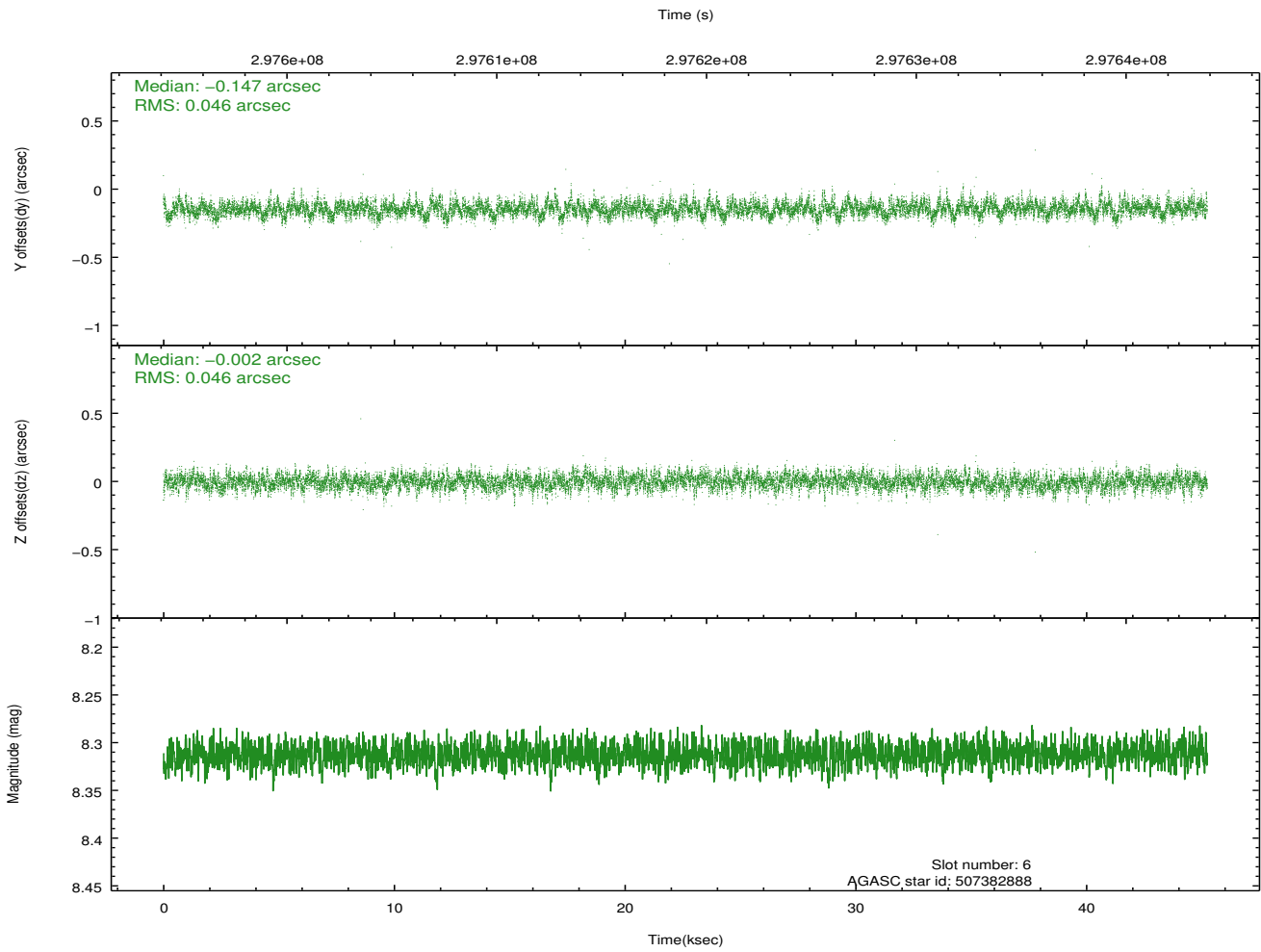
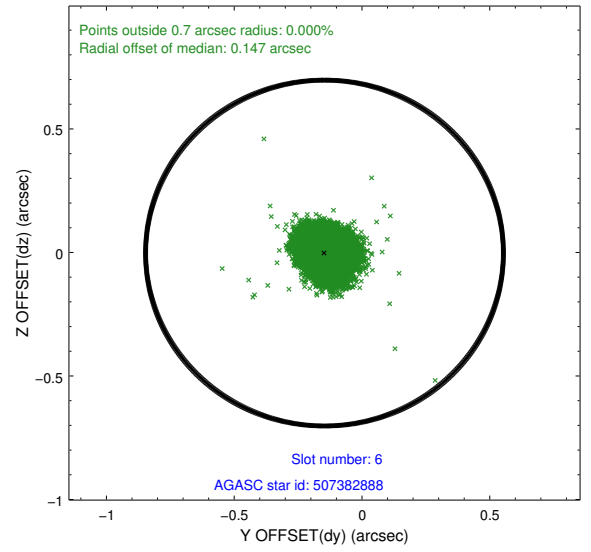
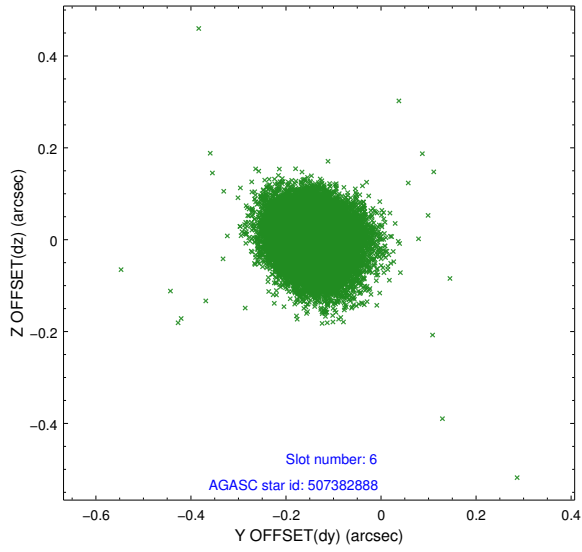
2.4.2 Slot 4



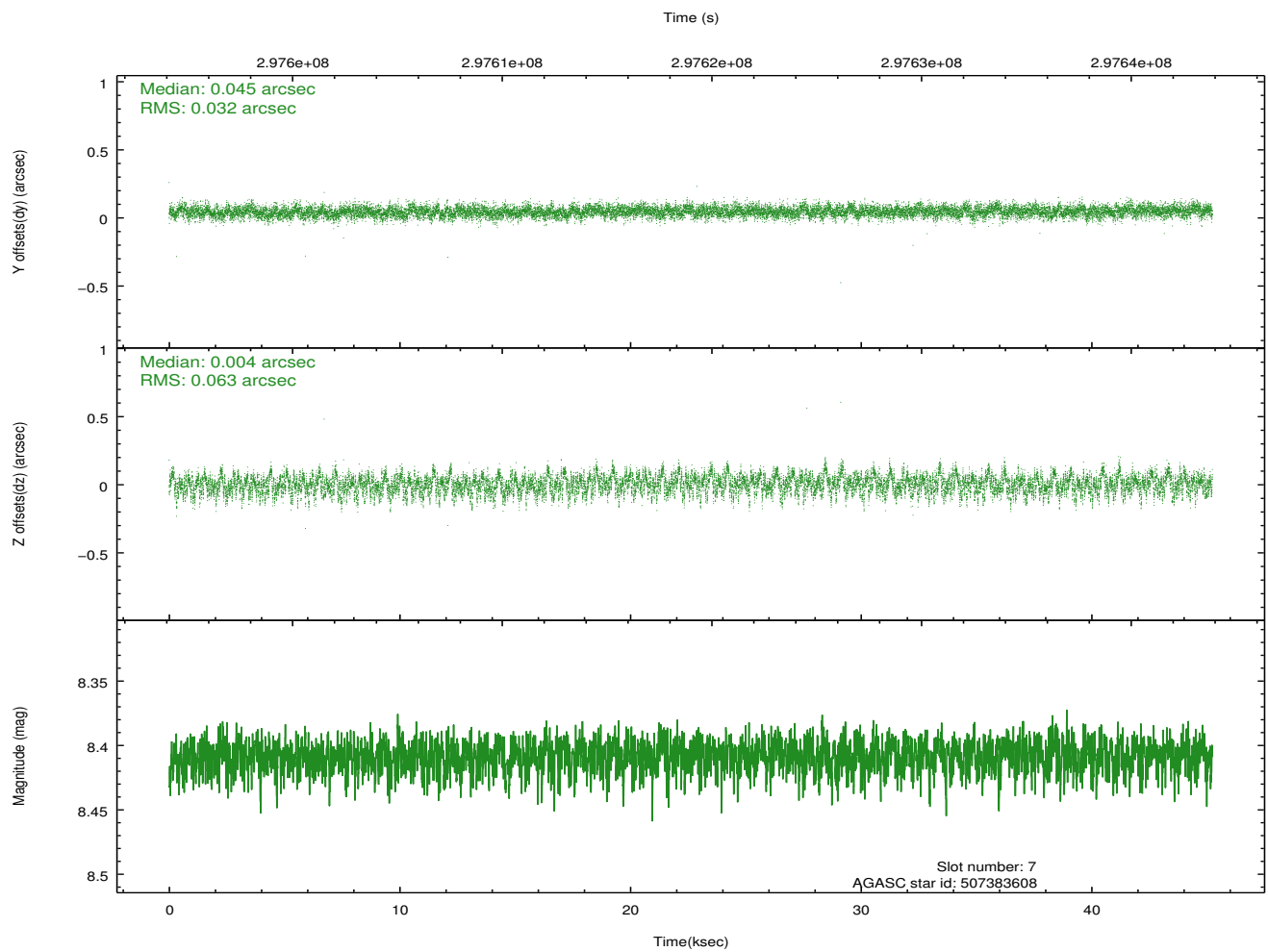
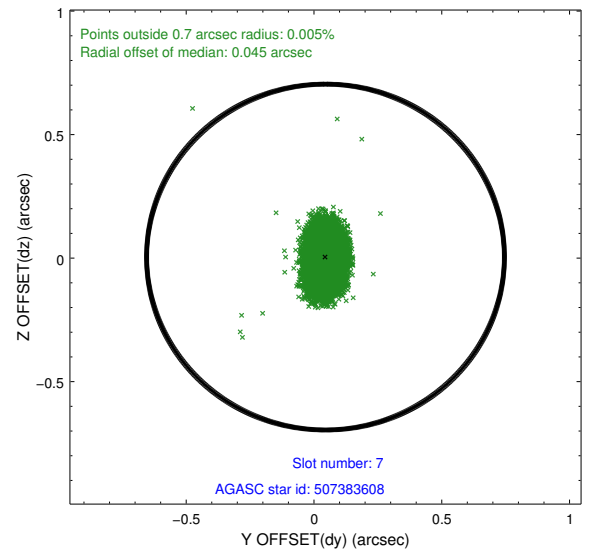
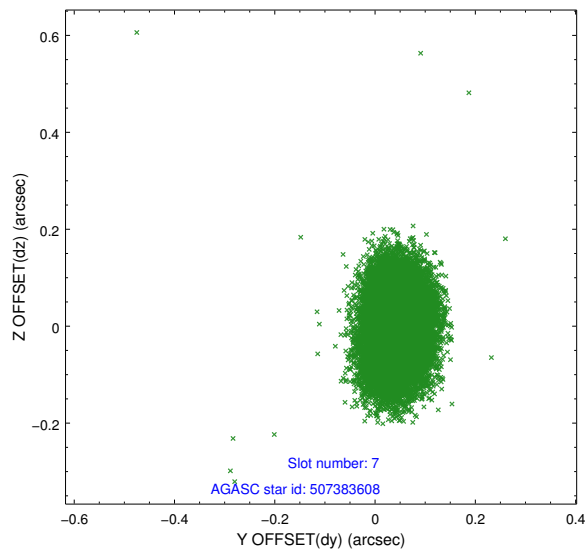
2.4.3 Slot 5



2.4.4 Slot 6

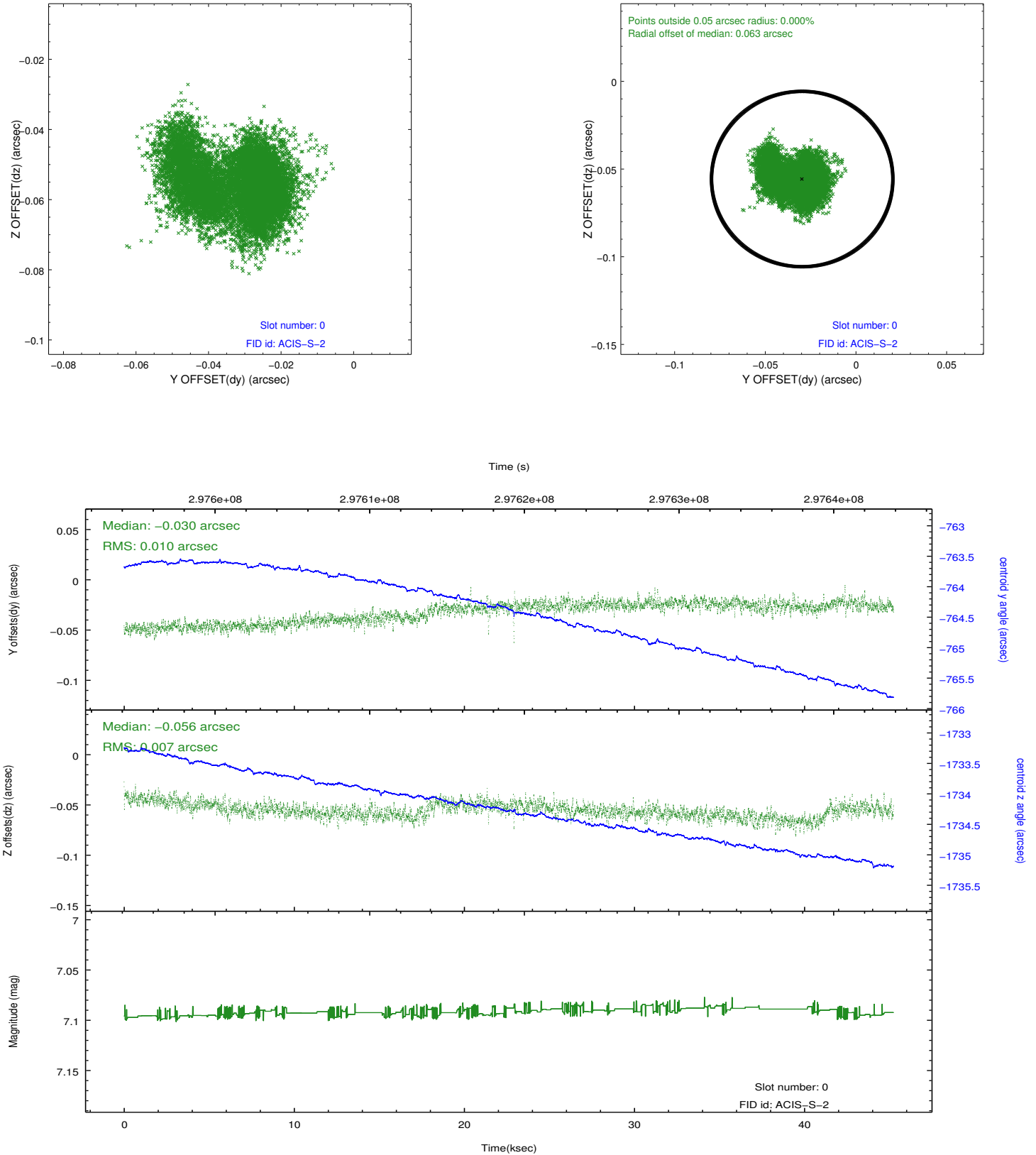


2.4.5 Slot 7

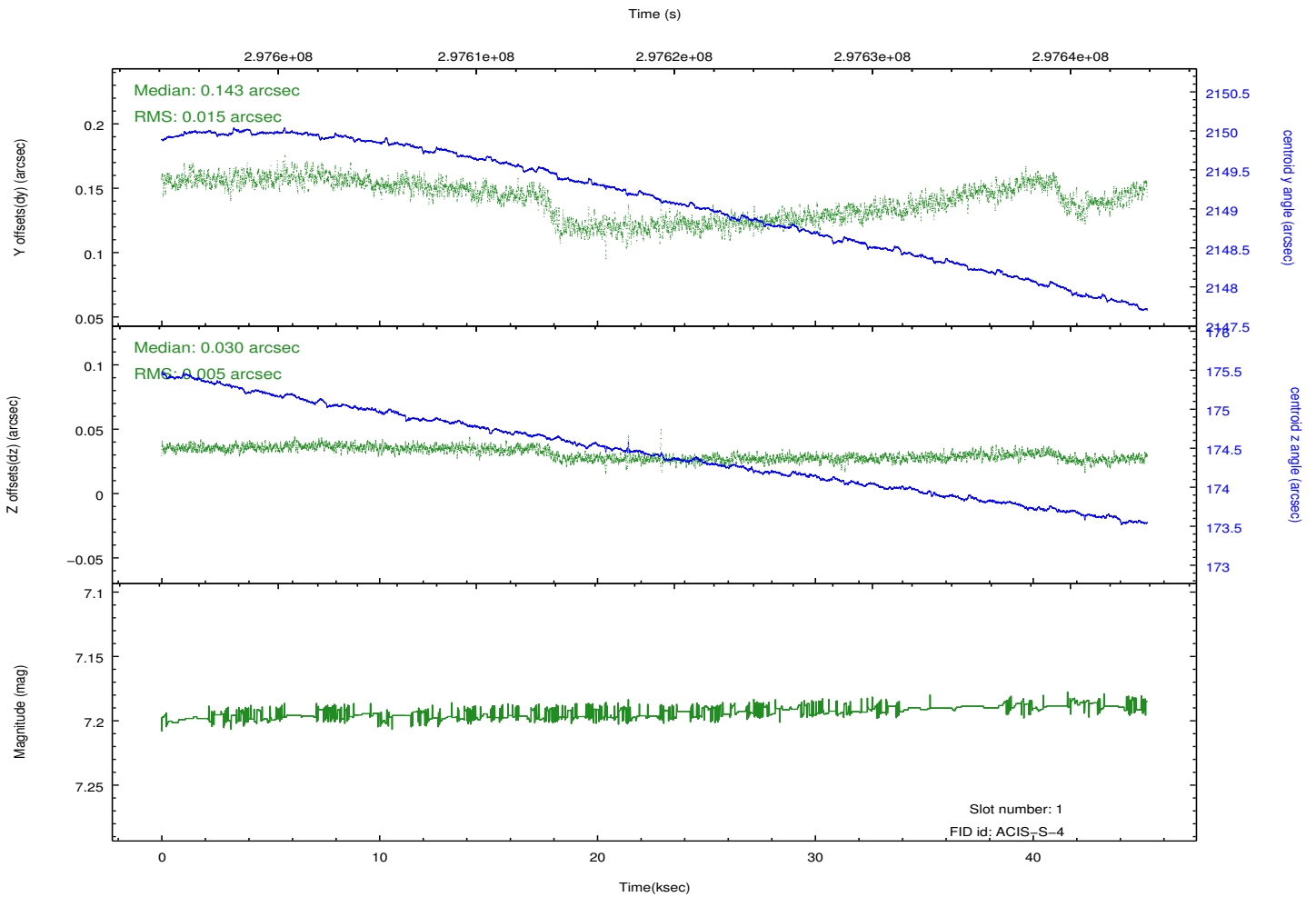
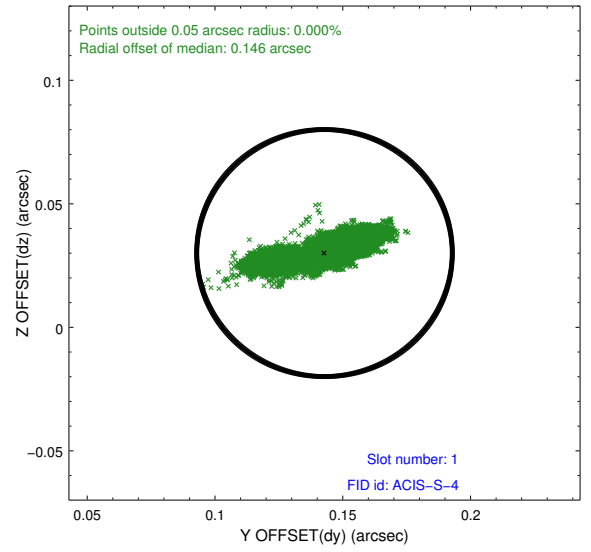
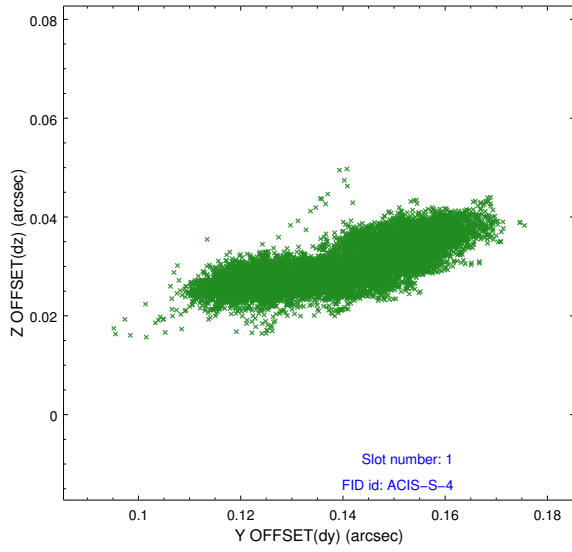


2.5 FID Slots

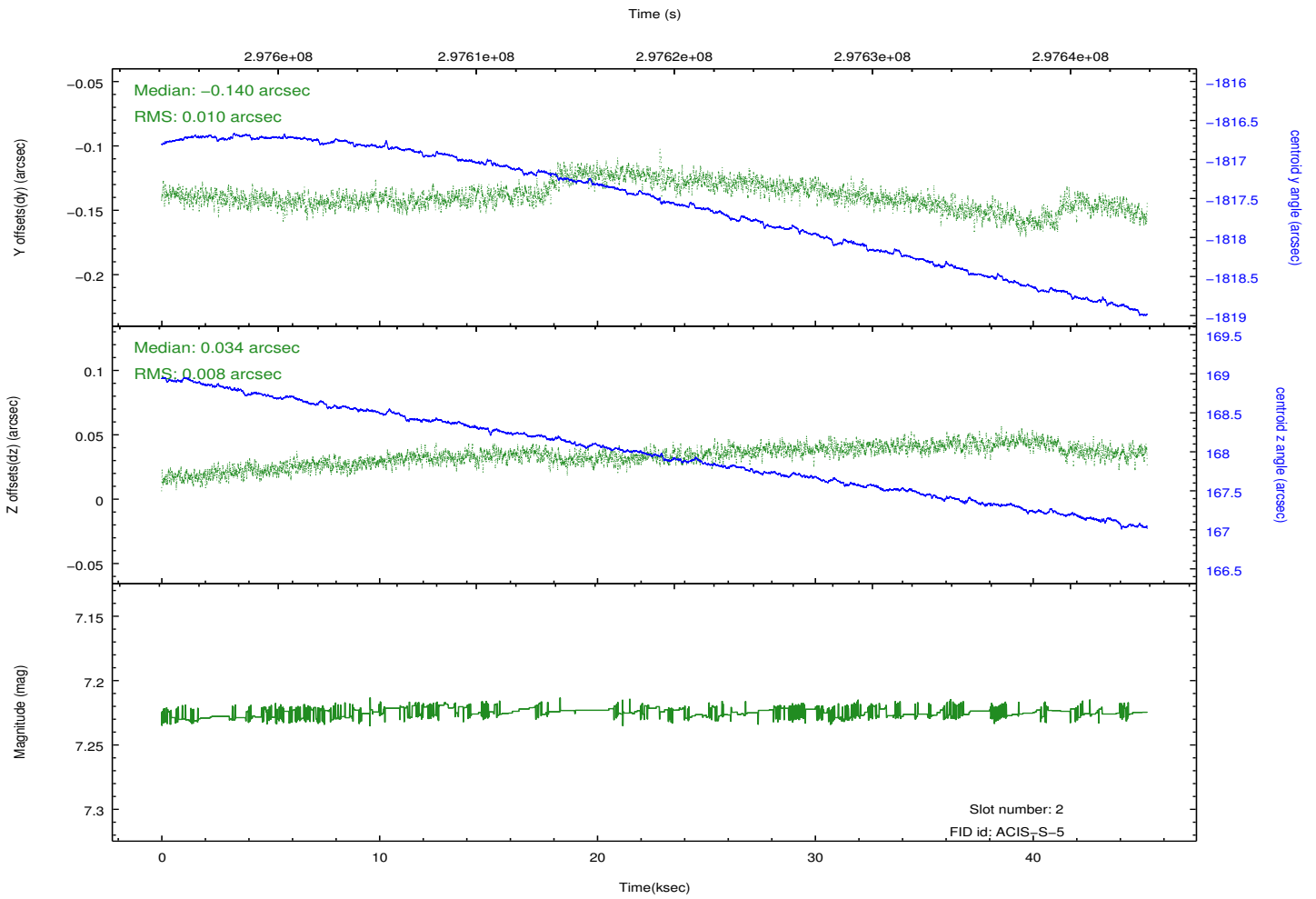
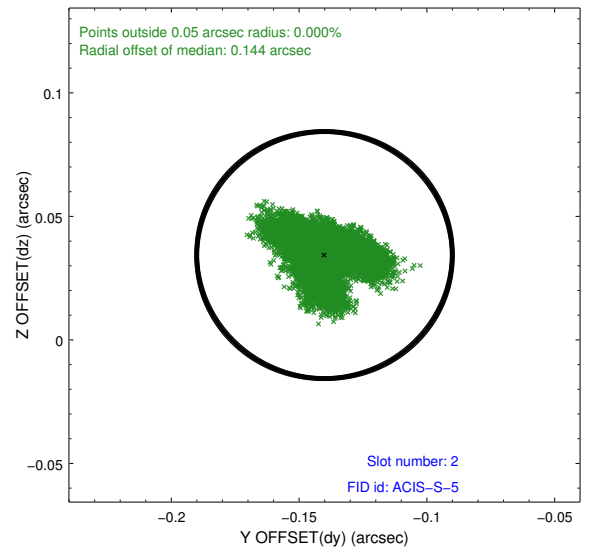
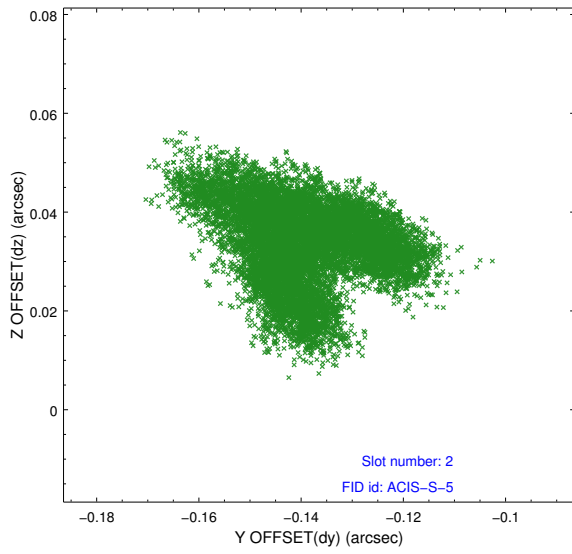
2.5.1 Slot 0



2.5.2 Slot 1



2.5.3 Slot 2



A Summary

A.1 Status

V&V Scientist	Jen Lauer
V&V Date (YYYY-MM-DD)	2012.04.26
V&V Edition	1
V&V Disposition and Status	OK
V&V Charge Time	44.9471998

A.2 Comments