

# V&V Reference Report

## L2 ASCDS Version : 8.4.4

Observation 7818 - L2 Version 2  
Chandra X-Ray Center

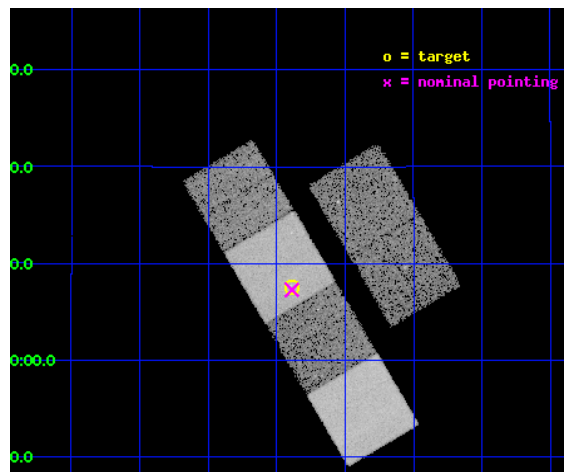
L2 Processing Date : Apr 30 2012

## Contents

<b>1</b>	<b>Front</b>	<b>2</b>
<b>2</b>	<b>OBI</b>	<b>3</b>
2.1	OBI . . . . .	3
2.1.1	Images . . . . .	3
2.1.2	Bias . . . . .	3
2.1.3	Parameters . . . . .	4
2.1.4	Events . . . . .	4
2.2	Compared Parameters . . . . .	5
2.3	Aspect . . . . .	6
2.4	Star Slots . . . . .	9
2.4.1	Slot 3 . . . . .	9
2.4.2	Slot 4 . . . . .	10
2.4.3	Slot 5 . . . . .	11
2.4.4	Slot 6 . . . . .	12
2.4.5	Slot 7 . . . . .	13
2.5	FID Slots . . . . .	14
2.5.1	Slot 0 . . . . .	14
2.5.2	Slot 1 . . . . .	15
2.5.3	Slot 2 . . . . .	16
<b>A</b>	<b>Summary</b>	<b>17</b>
A.1	Status . . . . .	17
A.2	Comments . . . . .	17

# 1 Front

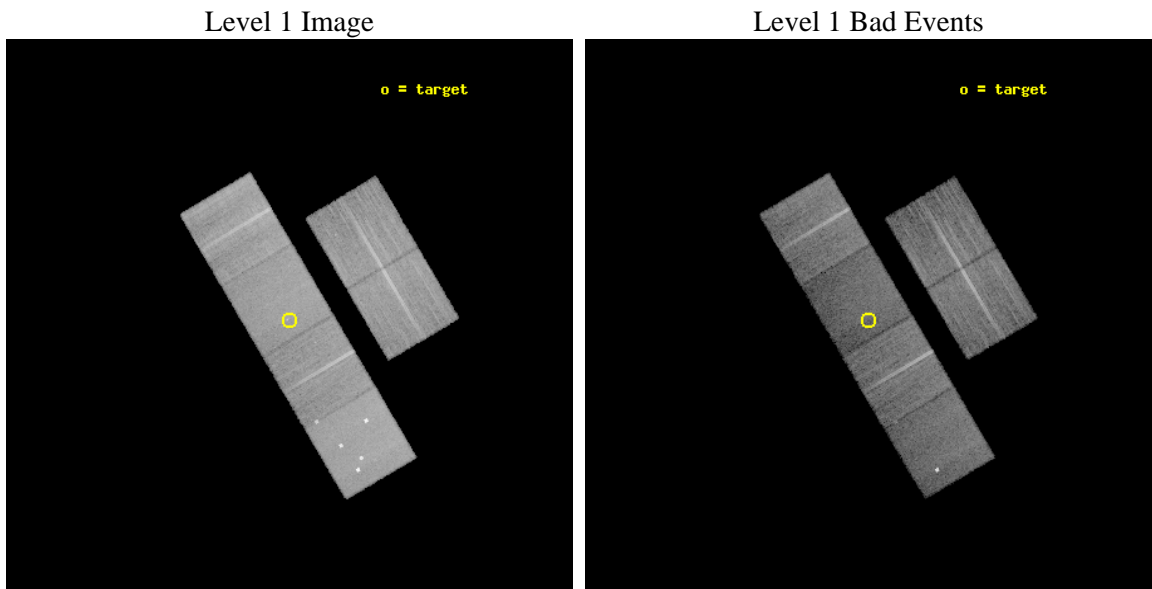
seq_num	701482	Sequence number
obs_id	7818	Observation id
title	The Chandra-RBGS Survey of a Complete Sample of Luminous Infrared Galaxies	Proposal title
observer	Professor David Sanders	Principal investigator
object	CGCG 448-020	Source name
dtcycle	0	&#160
cycle	P	events from which exps? Prim/Second/Both
ra_targ	314.347083	Observer's specified target RA [deg]
dec_targ	17.126194	Observer's specified target Dec [deg]
ra_nom	314.34720361173	Nominal RA [deg]
dec_nom	17.121305204791	Nominal Dec [deg]
roll_nom	239.43375736056	Nominal Roll [deg]
revision	2	Processing version of data
ontime	14751.999945104	Sum of GTIs [s]
livetime	14565.201239211	Livetime [s]
ontime2	14751.999945104	Sum of GTIs [s]
ontime3	14748.75894475	Sum of GTIs [s]
ontime5	14751.999945104	Sum of GTIs [s]
ontime6	14751.999945104	Sum of GTIs [s]
ontime7	14751.999945104	Sum of GTIs [s]
ontime8	14748.758954763	Sum of GTIs [s]
l2events	179339	Number of level 2 events



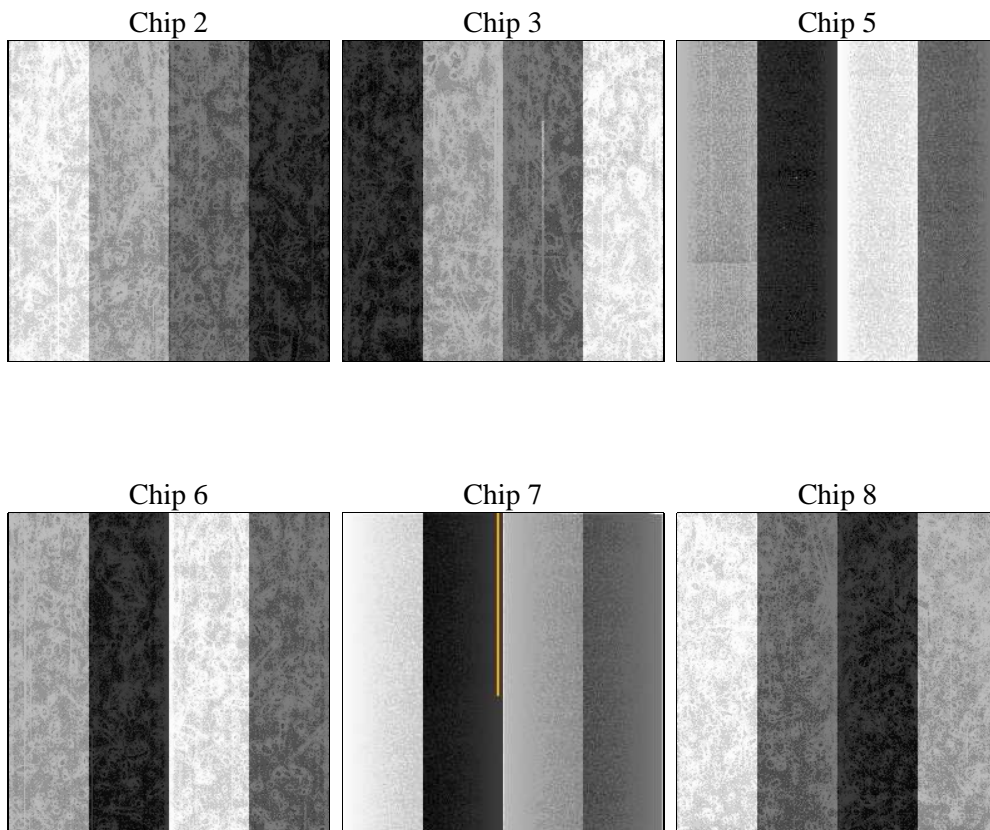
## 2 OBI

### 2.1 OBI

#### 2.1.1 Images



#### 2.1.2 Bias



### 2.1.3 Parameters

obi_num	0	Obi number	sched_exp_time	15000.000000	[s] Scheduled observation exposure time
ascdsver	8.4.4	Processing system revision	ontime	14751.999945104	Sum of GTIs [s]
caldbver	4.4.9	&#160	ontime2	14751.999945104	Sum of GTIs [s]
date	2012-04-30T15:12:51	Date and time of file creation	ontime3	14748.75894475	Sum of GTIs [s]
revision	2	Processing version of data	ontime5	14751.999945104	Sum of GTIs [s]
			ontime6	14751.999945104	Sum of GTIs [s]
			ontime7	14751.999945104	Sum of GTIs [s]
			ontime8	14748.758954763	Sum of GTIs [s]
			l1events	830434	Number of level 1 events

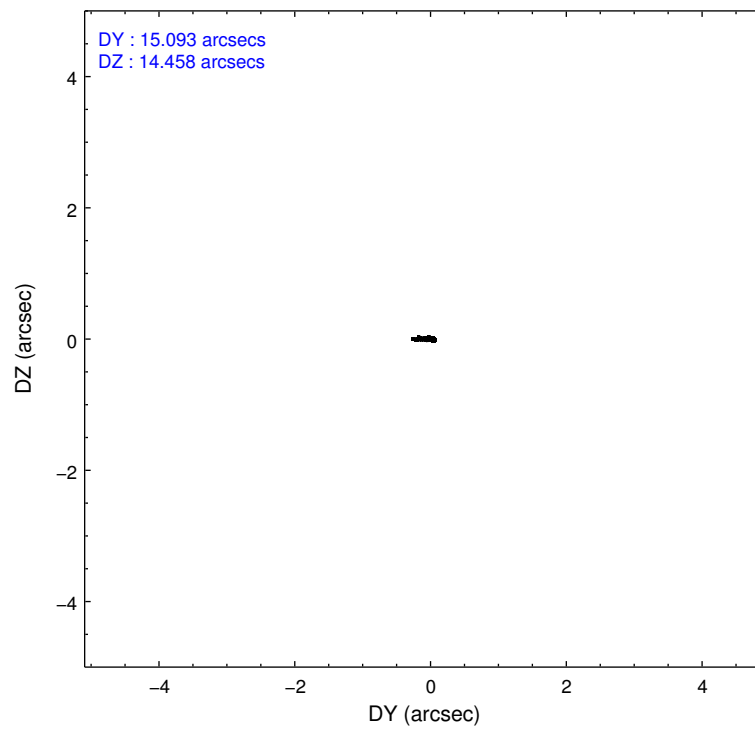
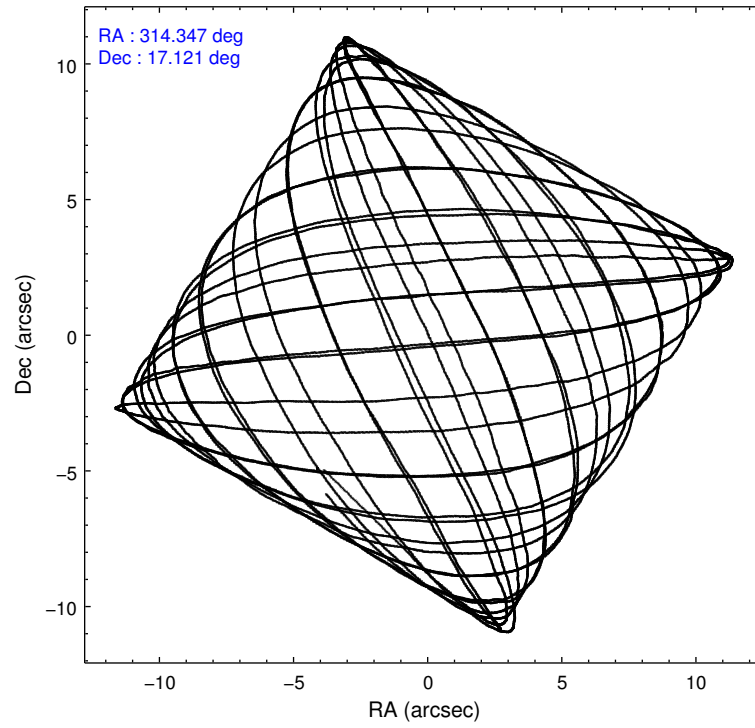
### 2.1.4 Events

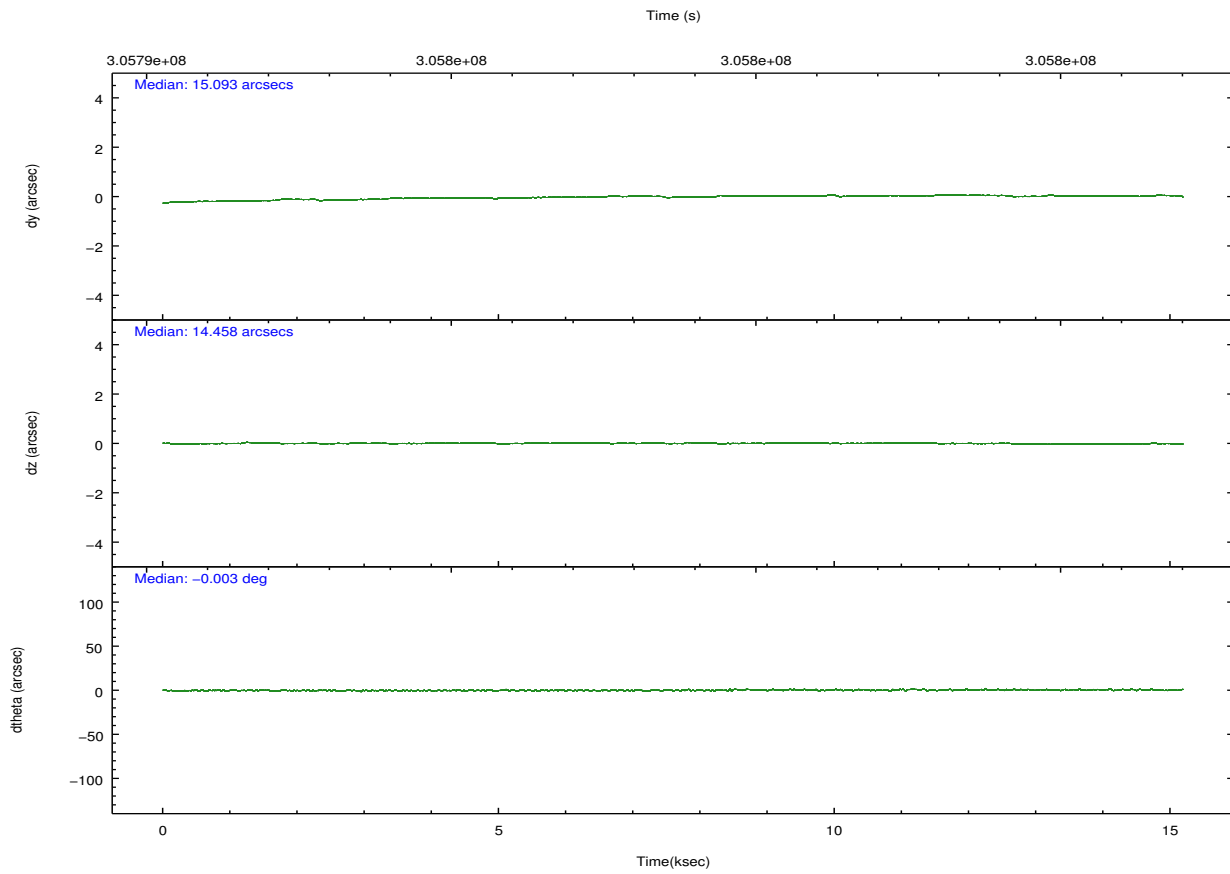
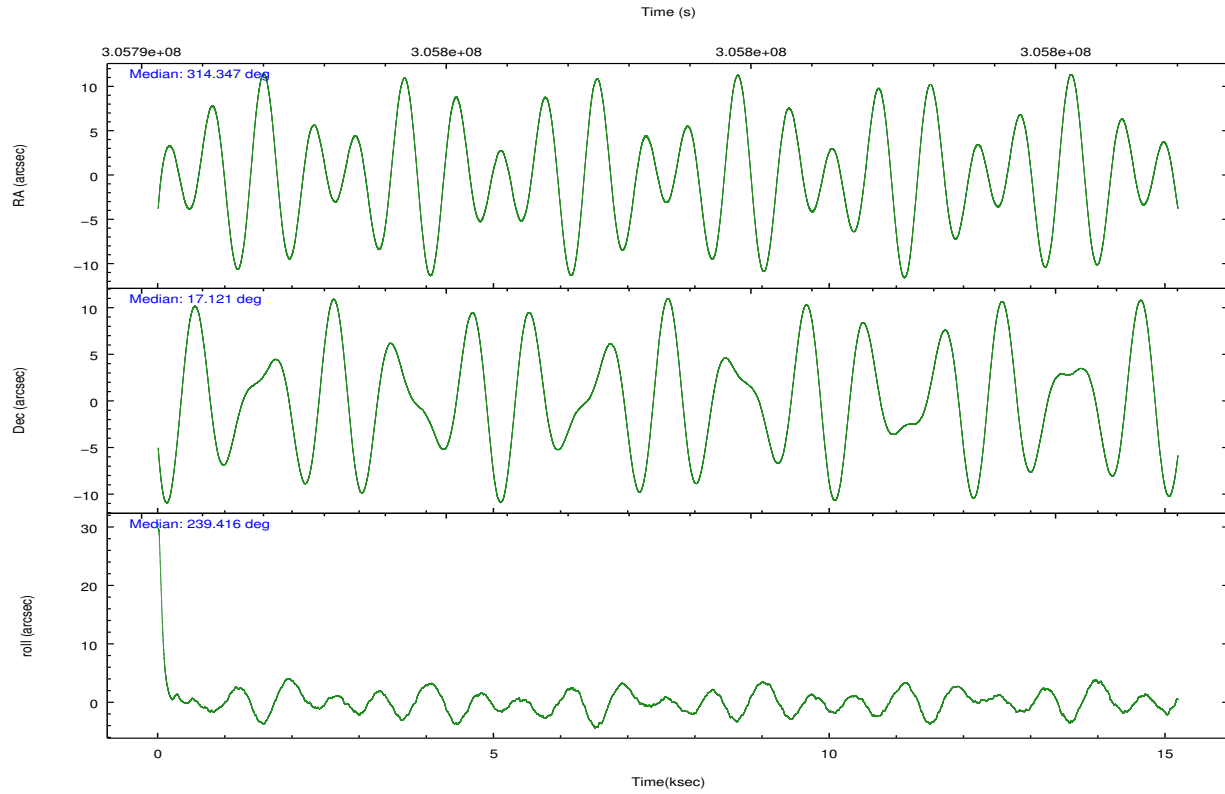
	ccd 2	ccd 3	ccd 5	ccd 6	ccd 7	ccd 8		ccd 2	ccd 3	ccd 5	ccd 6	ccd 7	ccd 8
level 1 events	126665	118195	177923	118646	134282	154723	grade 0 events	4137	4079	16365	4450	5871	10879
rejected events	115089	107132	85870	106267	72824	117367		3%	3%	9%	3%	4%	7%
rejected %	90%	90%	48%	89%	54%	75%	grade 1 events	73	66	393	68	163	148
								0%	0%	0%	0%	0%	0%
							grade 2 events	2812	2358	25877	2721	12307	8574
								2%	1%	14%	2%	9%	5%
							grade 3 events	1234	1224	3462	1345	5549	4000
								0%	1%	1%	1%	4%	2%
							grade 4 events	1214	1218	3277	1307	5748	3705
								0%	1%	1%	1%	4%	2%
							grade 5 events	3917	4665	13850	4571	14232	6916
								3%	3%	7%	3%	10%	4%
							grade 6 events	2184	2186	43115	2563	32006	10204
								1%	1%	24%	2%	23%	6%
							grade 7 events	111094	102399	71584	101621	58406	110297
								87%	86%	40%	85%	43%	71%

## 2.2 Compared Parameters

Parameter	Planned	Actual	Parameter	Planned	Actual
Instrument	ACIS	ACIS	Obspar format version number	7	7
Detector	ACIS-235678	ACIS-235678	Obspar file type	PREDICTED	ACTUAL
Grating	NONE	NONE	Obspar update status	NONE	UPDATED
Data mode	VFAINT	VFAINT	CCD I0 on	N	N
Observation mode	POINTING	POINTING	CCD I1 on	N	N
[deg] Pointing RA	314.347079	314.3472036117324	CCD I2 on	O1	Y
[deg] Pointing Dec	17.148692	17.12130520479121	CCD I3 on	O2	Y
[deg] Pointing Roll	239.277145	239.4337573605611	CCD S0 on	N	N
[mm] SIM focus pos	-0.684267	-0.6828225247311905	CCD S1 on	O3	Y
[mm] SIM defocus	0	0.001444936568705701	CCD S2 on	O5	Y
[mm] SIM translation stage pos	-190.132523	-190.1400660498719	CCD S3 on	Y	Y
[mm] SIM translation stage offset	0	0.00754346686406393	CCD S4 on	O4	Y
[s] Observation start time (MET)	305791233.184000	305790528.7827	CCD S5 on	N	N
Observation start date	2007-09-10T05:59:28	2007-09-10T05:48:48	Number of optional ACIS chips dropped	0	0
[s] Observation end time (MET)	305806233.184000	305807370.04601	On-chip summing requested	N	N
Observation end date	2007-09-10T10:09:28	2007-09-10T10:29:30	Subarray requested	NONE	NONE
Read mode	TIMED	TIMED	Alternating exposures requested	N	N
			[s] Primary exposure time	0.000000	3.2

## 2.3 Aspect



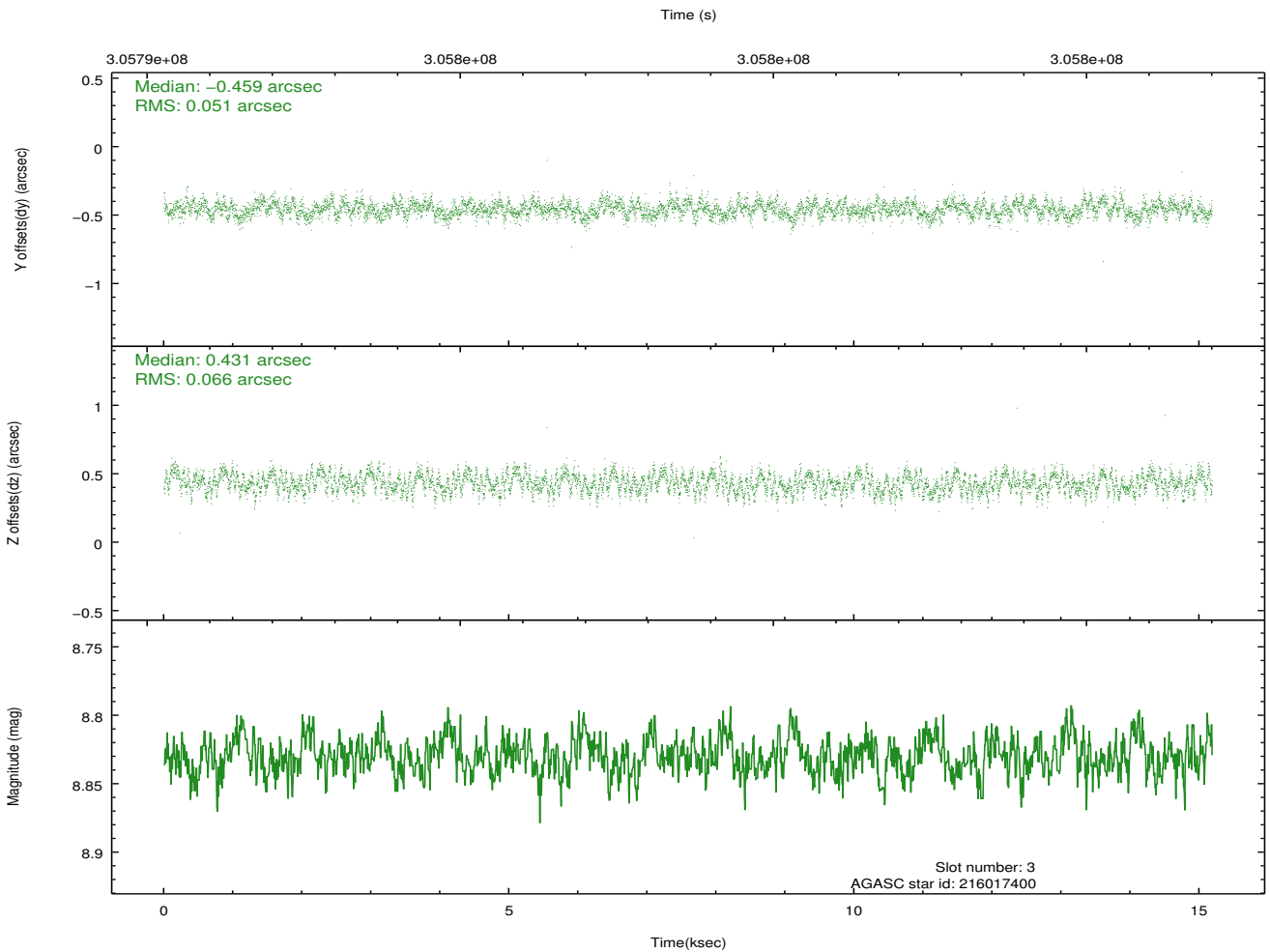
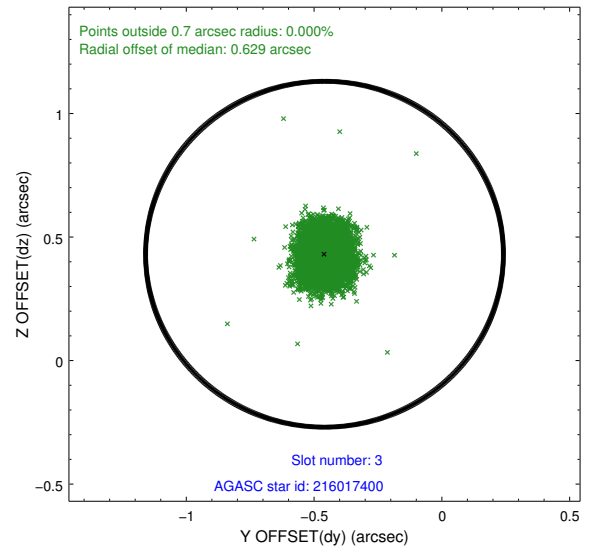
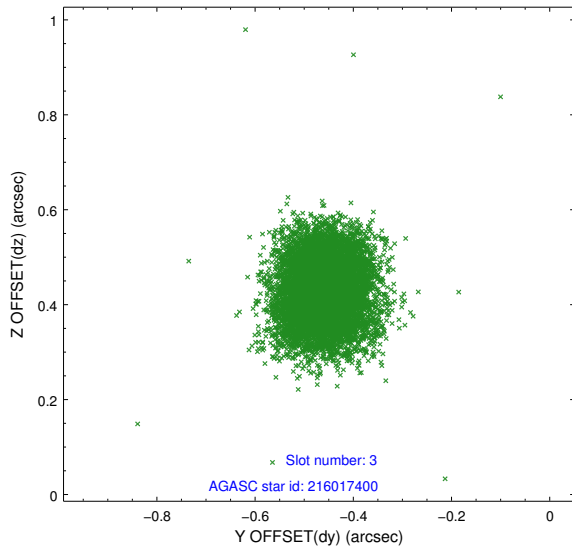


### Slot Statistics

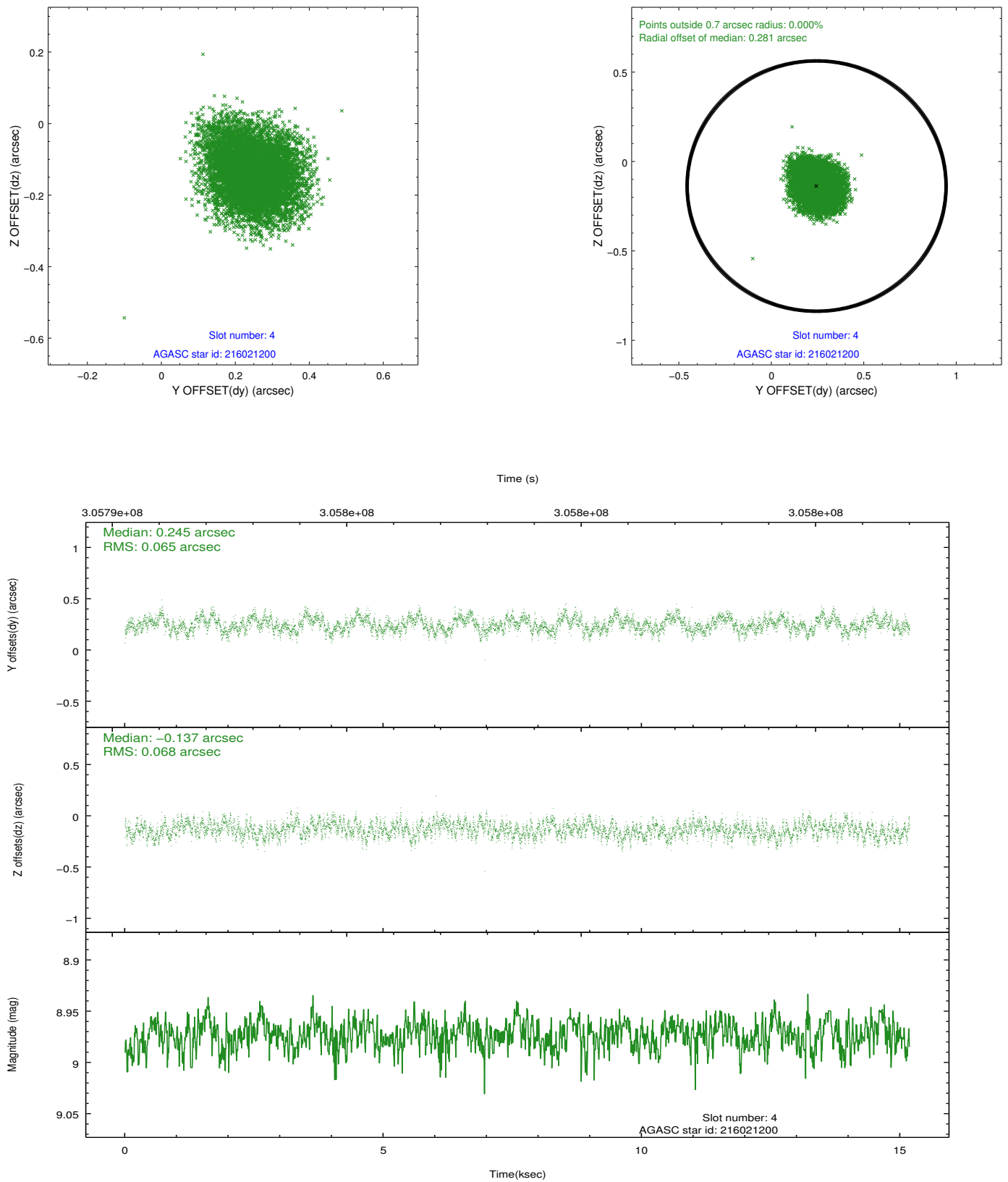
slot	status	id	mag	n_pts	med_dy	med_dz	dr1	dr2	ra	dec	mean_y	mean_z
0	FID	ACIS-S-1	7.18	3704	0.042	0.003	0.007	0.011	0.000000	0.000000	927.98	-1731.48
1	FID	ACIS-S-2	7.10	3704	-0.178	-0.081	0.008	0.013	0.000000	0.000000	-767.98	-1736.36
2	FID	ACIS-S-4	7.19	3704	0.110	0.084	0.009	0.014	0.000000	0.000000	2145.22	172.41
3	GUIDE	216017400	8.83	7408	-0.459	0.431	0.088	0.139	314.627466	16.796926	593.72	1477.94
4	GUIDE	216021200	8.97	7404	0.245	-0.137	0.101	0.161	314.774210	16.777950	393.85	1946.83
5	GUIDE	216412952	8.27	7335	-0.077	-0.139	0.068	0.112	313.759075	17.259564	687.87	-1942.98
6	GUIDE	216543984	9.25	7401	0.177	-0.120	0.109	0.174	314.525601	16.987395	185.40	824.73
7	GUIDE	216546464	7.54	7408	0.105	-0.041	0.078	0.120	314.255747	17.097474	319.46	-175.82

## 2.4 Star Slots

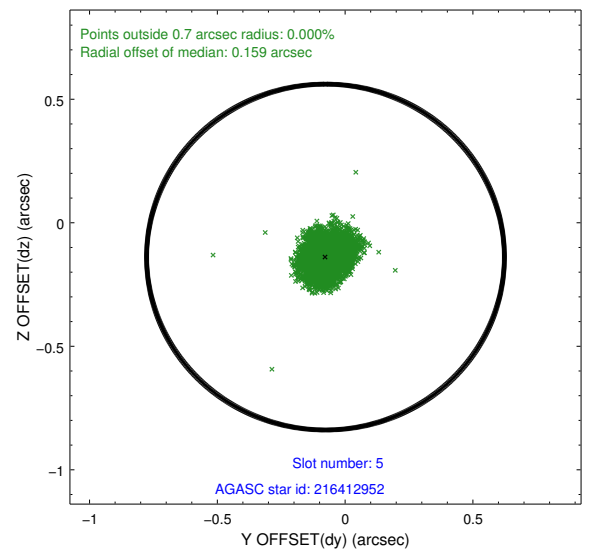
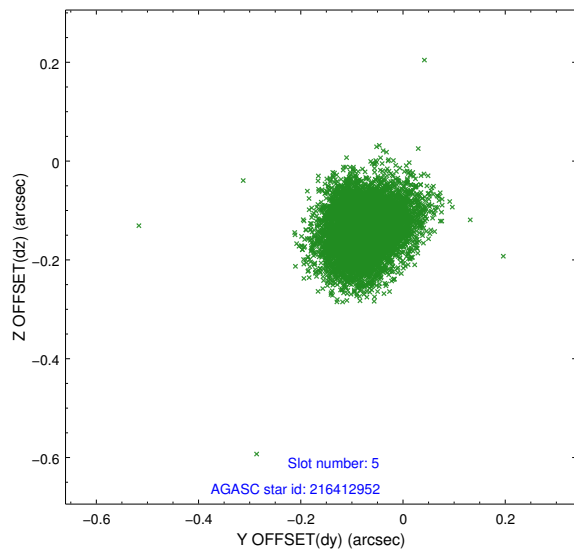
### 2.4.1 Slot 3



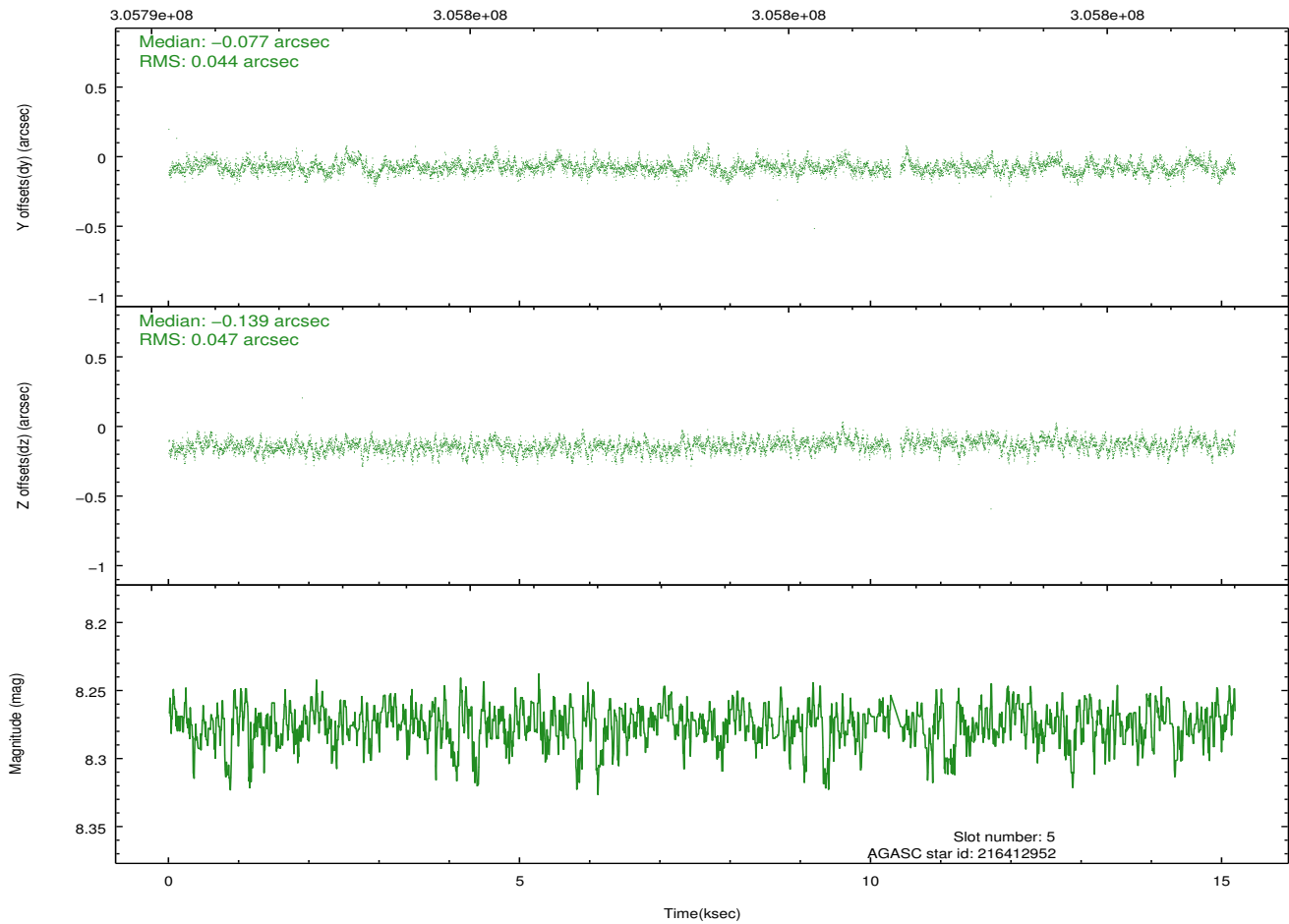
## 2.4.2 Slot 4



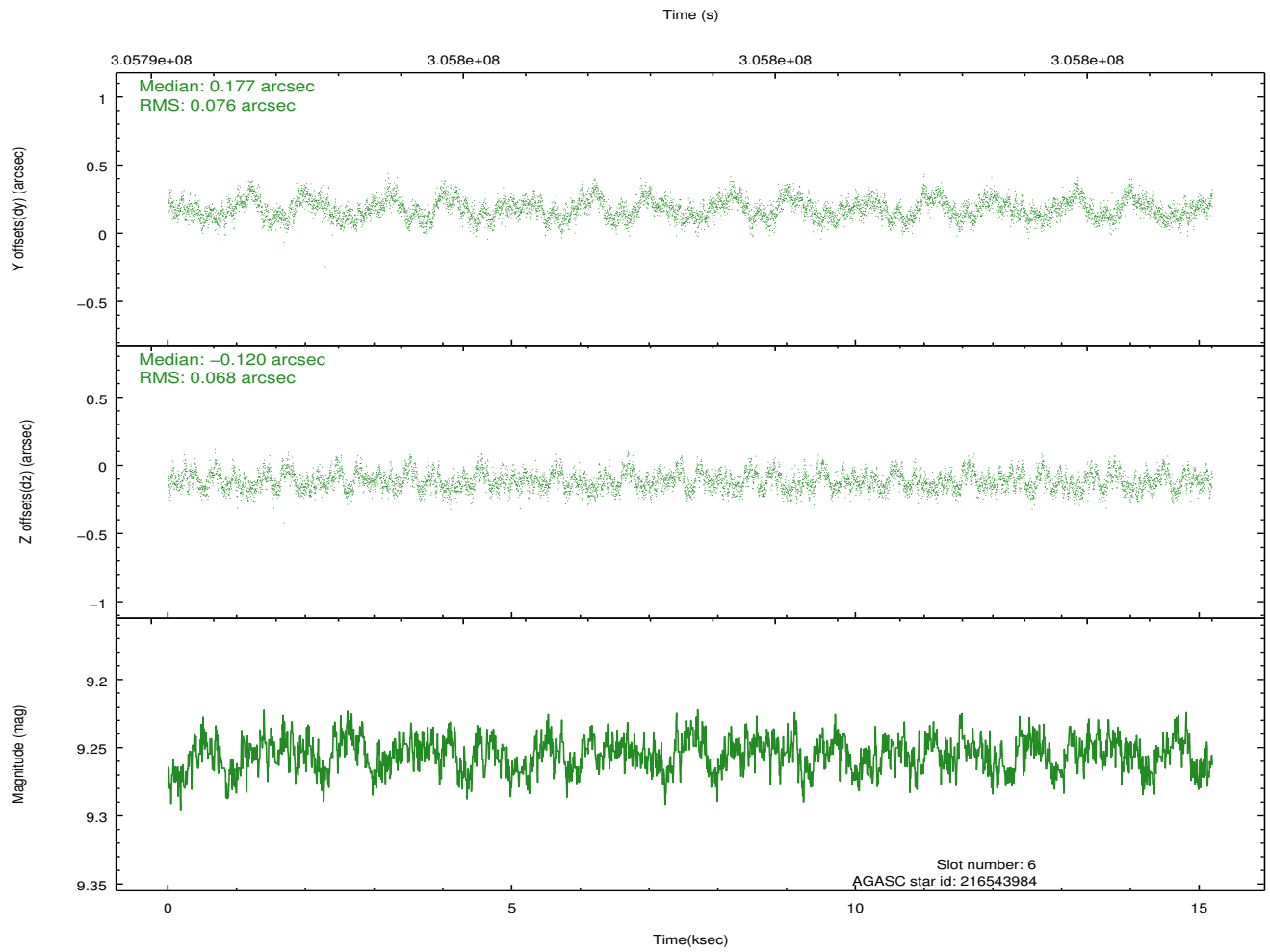
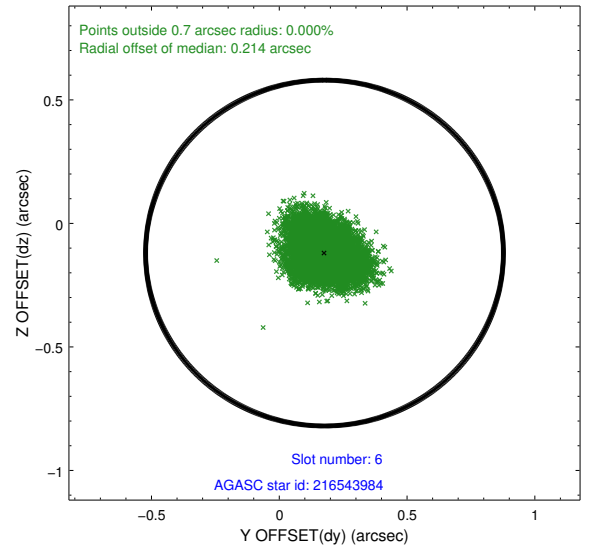
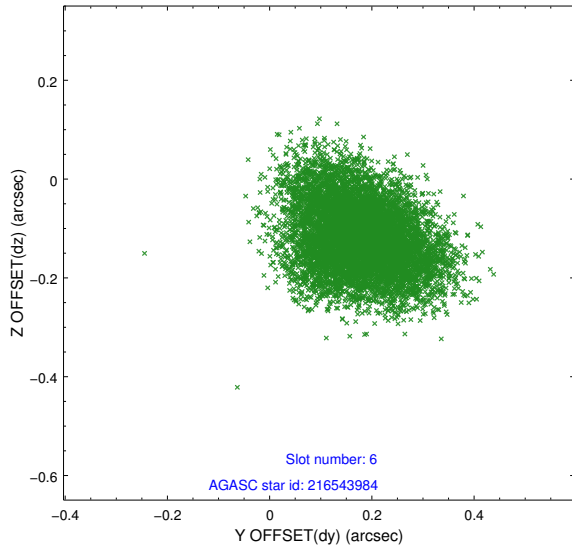
### 2.4.3 Slot 5



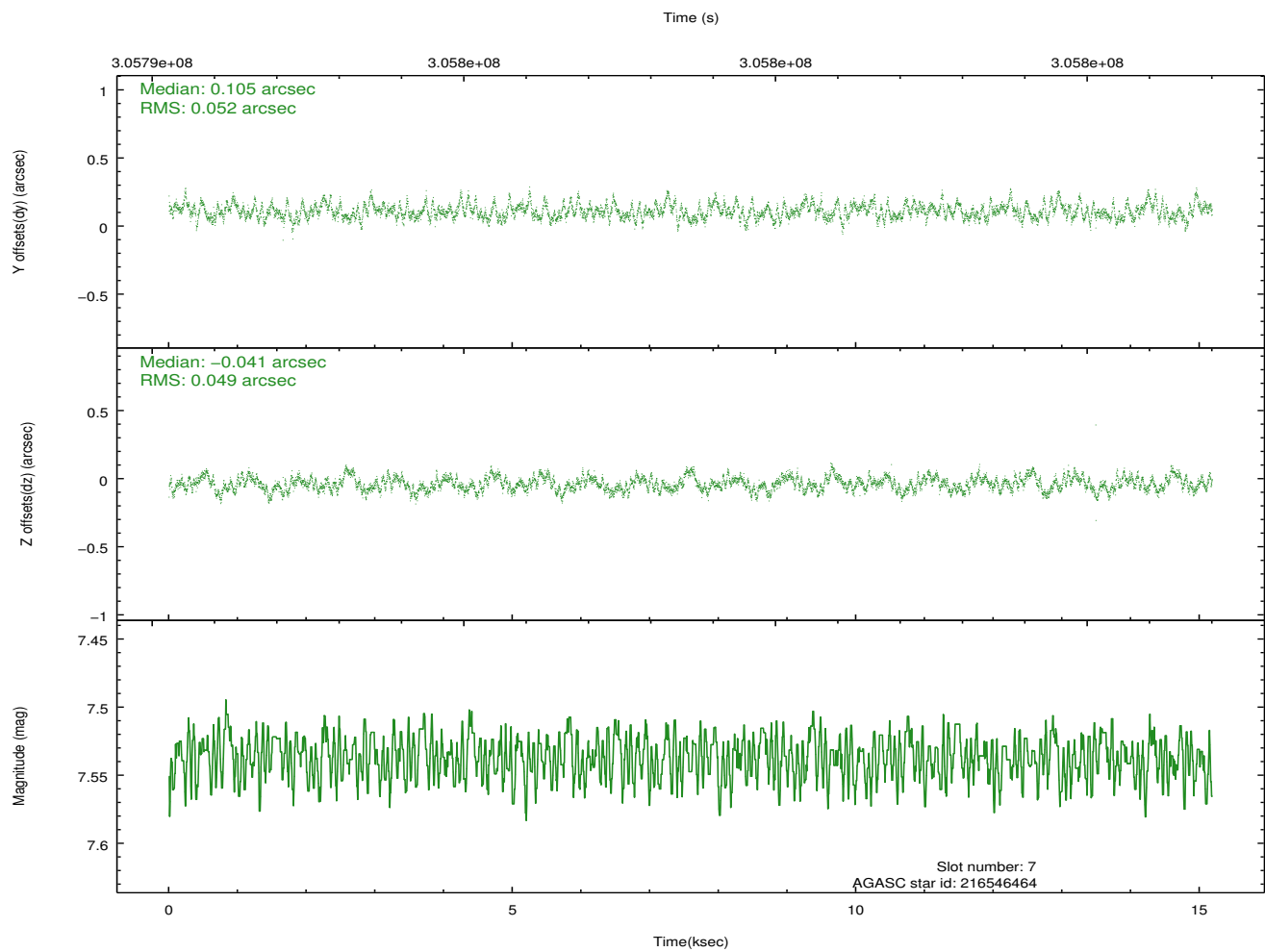
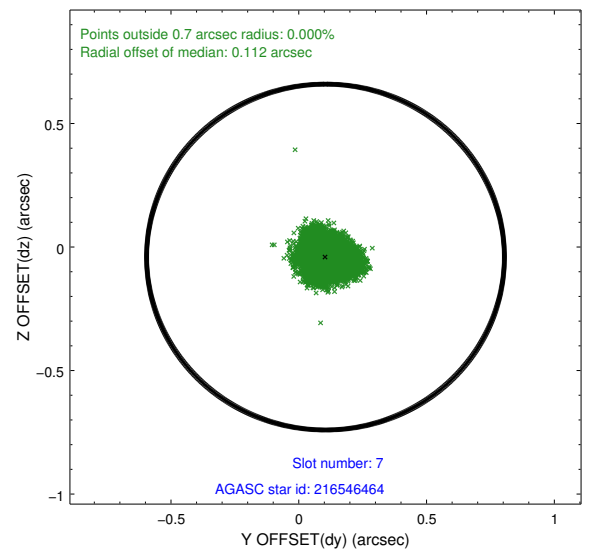
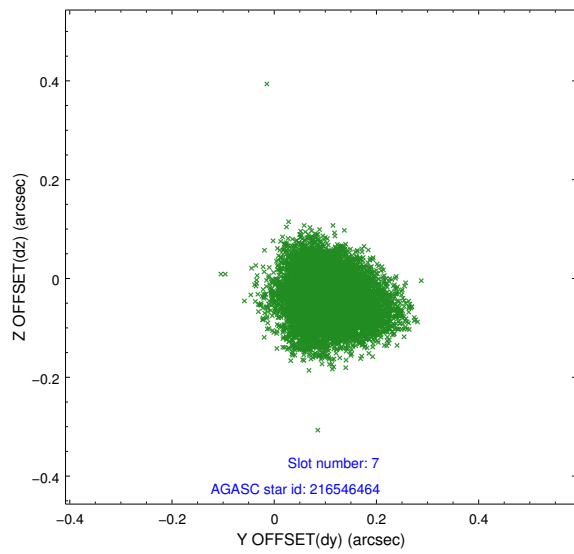
Time (s)



### 2.4.4 Slot 6

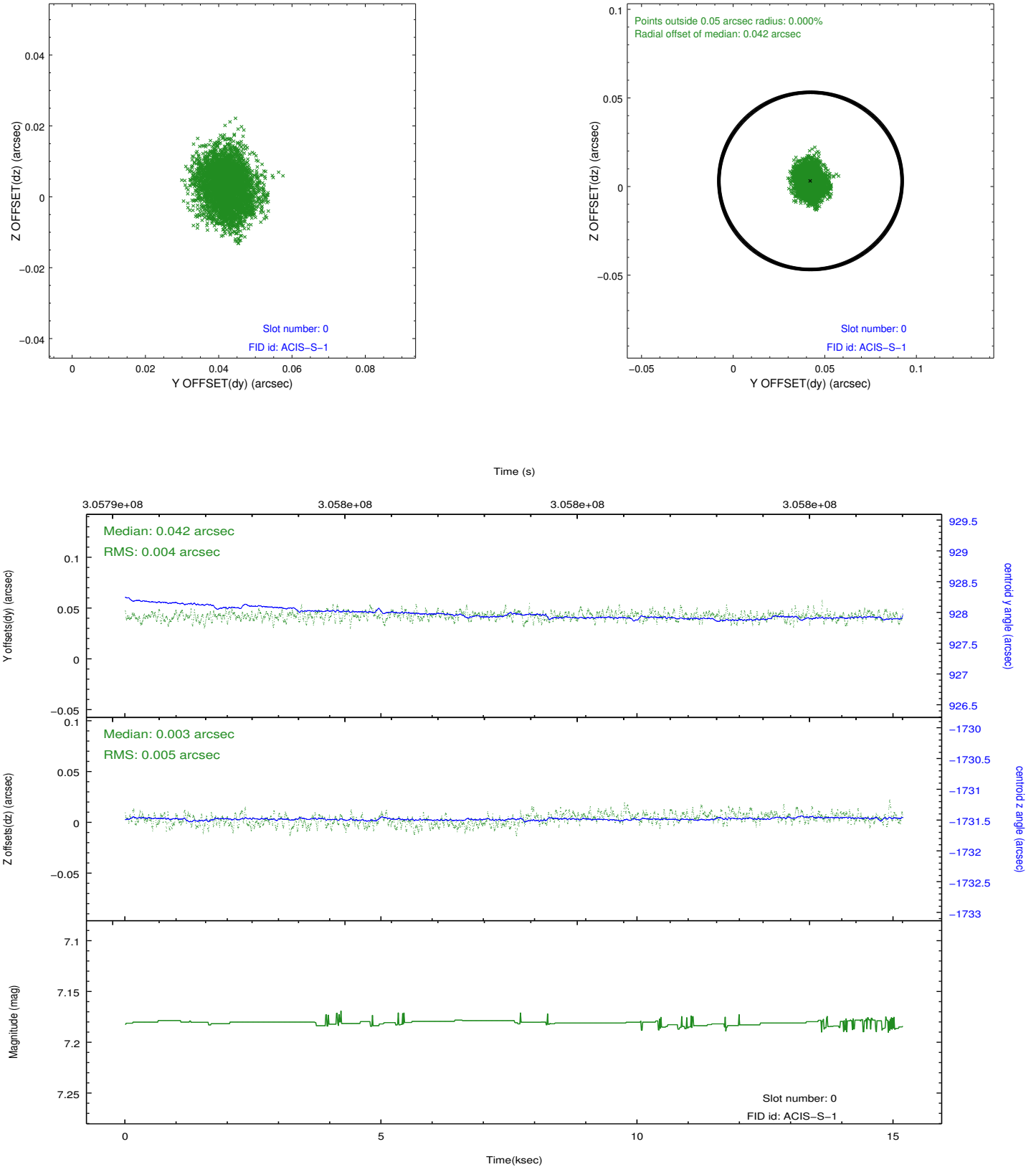


## 2.4.5 Slot 7

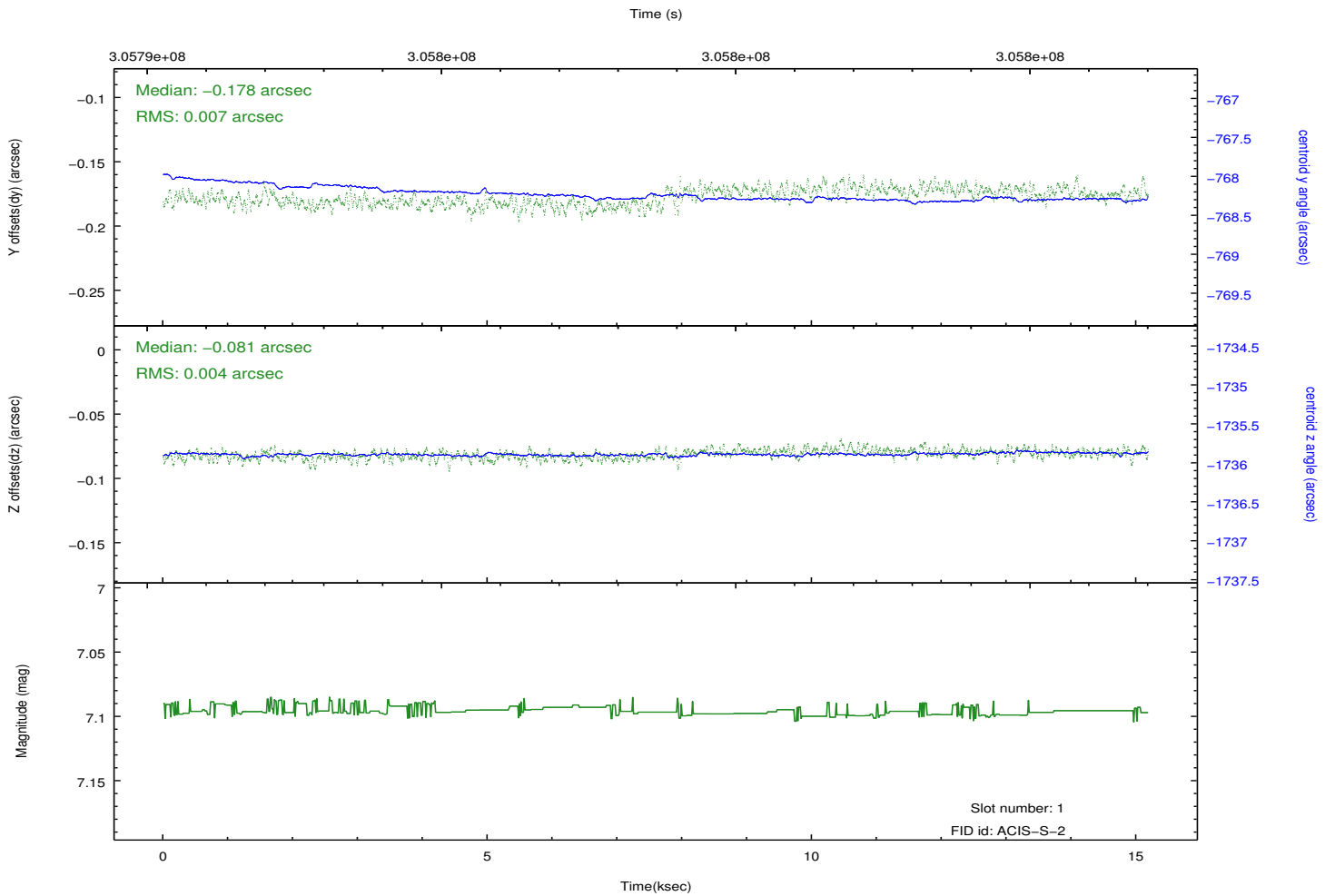
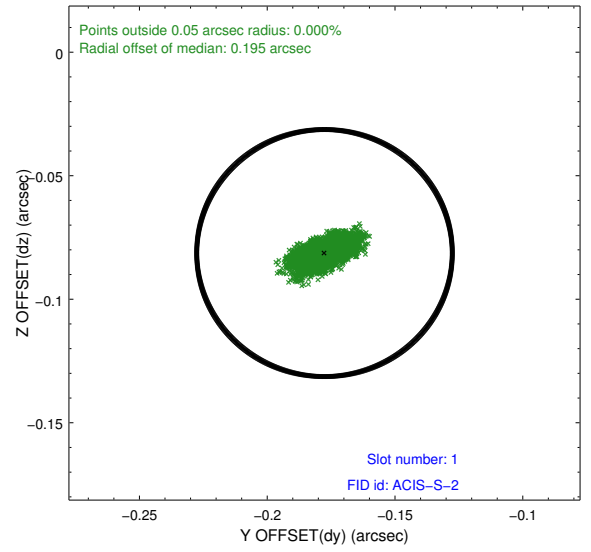
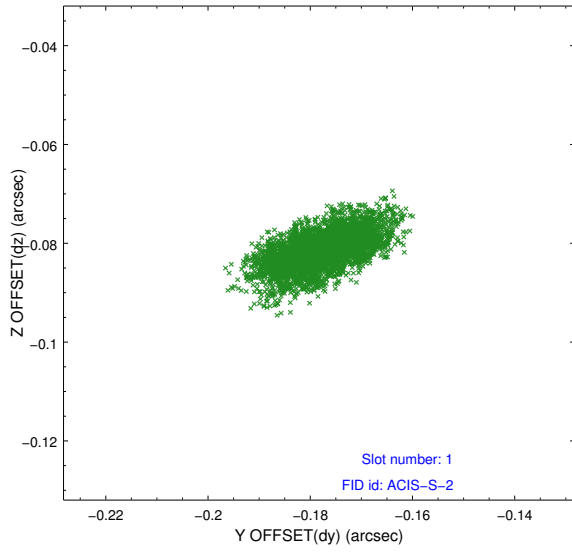


## 2.5 FID Slots

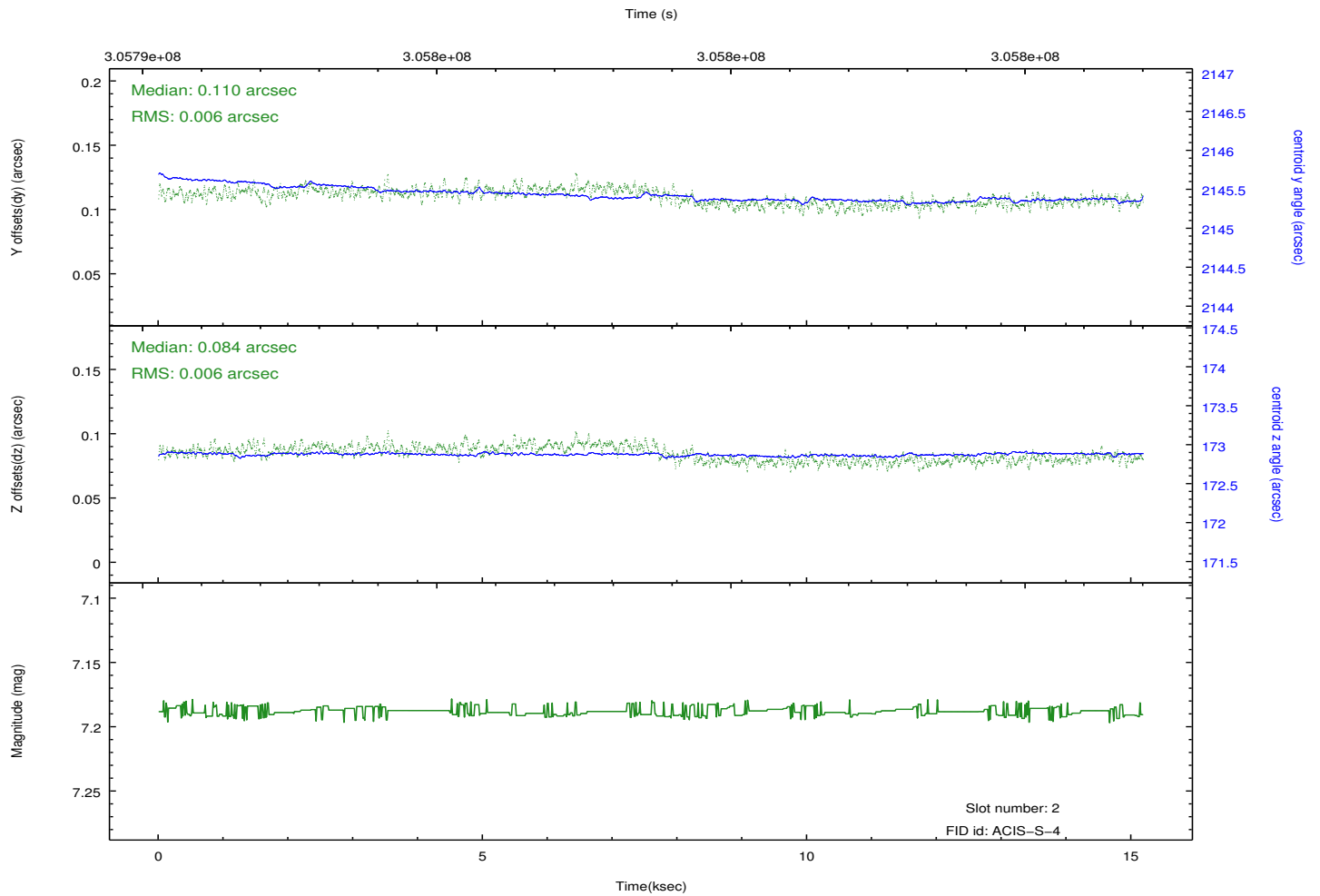
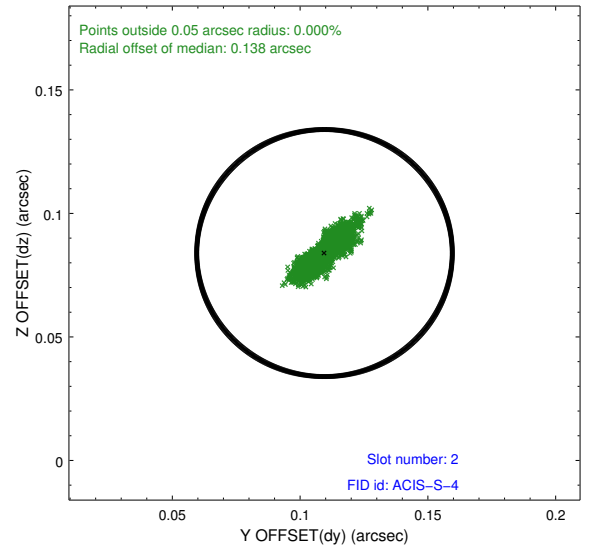
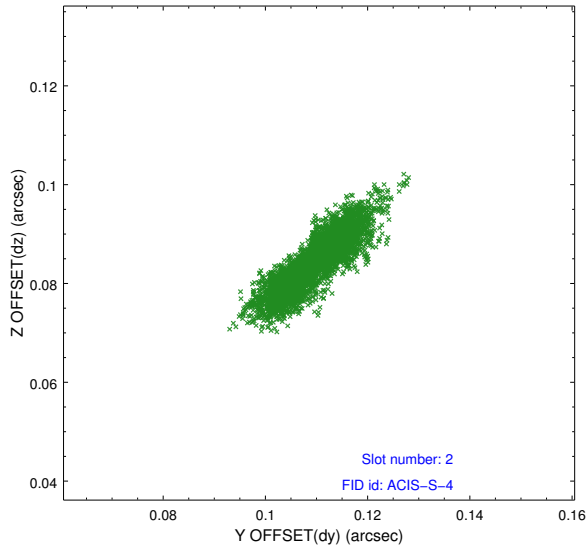
### 2.5.1 Slot 0



## 2.5.2 Slot 1



### 2.5.3 Slot 2



# A Summary

## A.1 Status

V&V Scientist	Jen Lauer
V&V Date (YYYY-MM-DD)	2012.05.02
V&V Edition	1
V&V Disposition and Status	OK
V&V Charge Time	14.7519999

## A.2 Comments