

V&V Reference Report

L2 ASCDS Version : 8.4.4

Observation 7828 - L2 Version 2
Chandra X-Ray Center

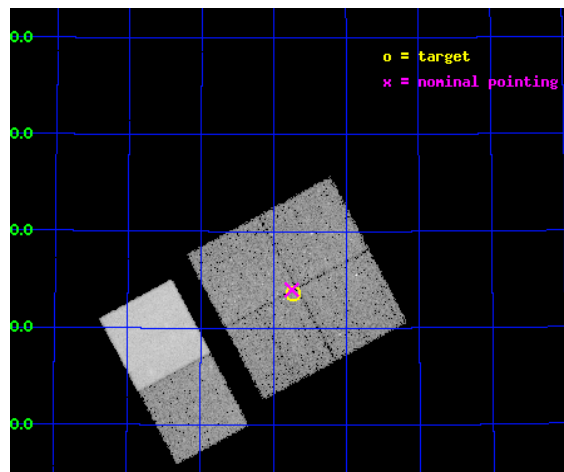
L2 Processing Date : Apr 29 2012

Contents

1	Front	2
2	OBI	3
2.1	OBI	3
2.1.1	Images	3
2.1.2	Bias	3
2.1.3	Parameters	4
2.1.4	Events	4
2.2	Compared Parameters	5
2.3	Aspect	6
2.4	Star Slots	9
2.4.1	Slot 3	9
2.4.2	Slot 4	10
2.4.3	Slot 5	11
2.4.4	Slot 6	12
2.4.5	Slot 7	13
2.5	FID Slots	14
2.5.1	Slot 0	14
2.5.2	Slot 1	15
2.5.3	Slot 2	16
A	Summary	17
A.1	Status	17
A.2	Comments	17

1 Front

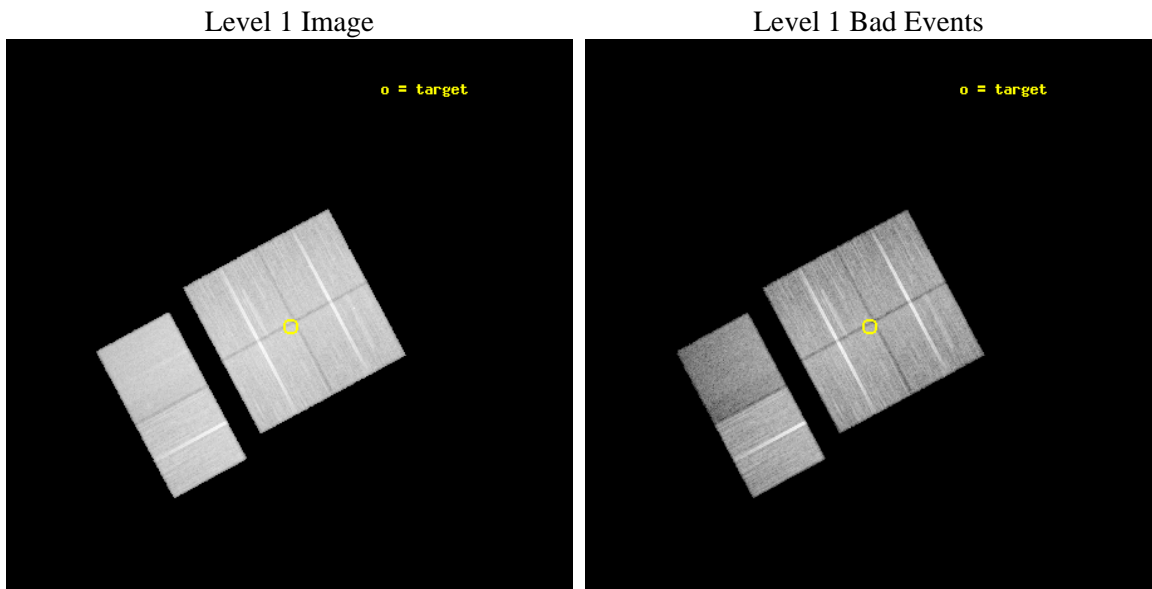
seq_num	701492	Sequence number
obs_id	7828	Observation id
title	What Powers the z~2 Spitzer ULIRGs in the First Look Survey	Propos
observer	Dr. Lin Yan	Principal investigator
object	FLS6	Source name
dtcycle	0	
cycle	P	events from which exps? Prim/Second/Both
ra_targ	260.934167	Observer's specified target RA [deg]
dec_targ	59.393306	Observer's specified target Dec [deg]
ra_nom	260.93719373344	Nominal RA [deg]
dec_nom	59.399799104911	Nominal Dec [deg]
roll_nom	241.79593060712	Nominal Roll [deg]
revision	2	Processing version of data
ontime	28159.958914816	Sum of GTIs [s]
livetime	27803.380559145	Livetime [s]
ontime0	28159.95892483	Sum of GTIs [s]
ontime1	28153.476954341	Sum of GTIs [s]
ontime2	28159.959014475	Sum of GTIs [s]
ontime3	28159.958914816	Sum of GTIs [s]
ontime6	28153.477063835	Sum of GTIs [s]
ontime7	28163.199895144	Sum of GTIs [s]
l2events	180194	Number of level 2 events



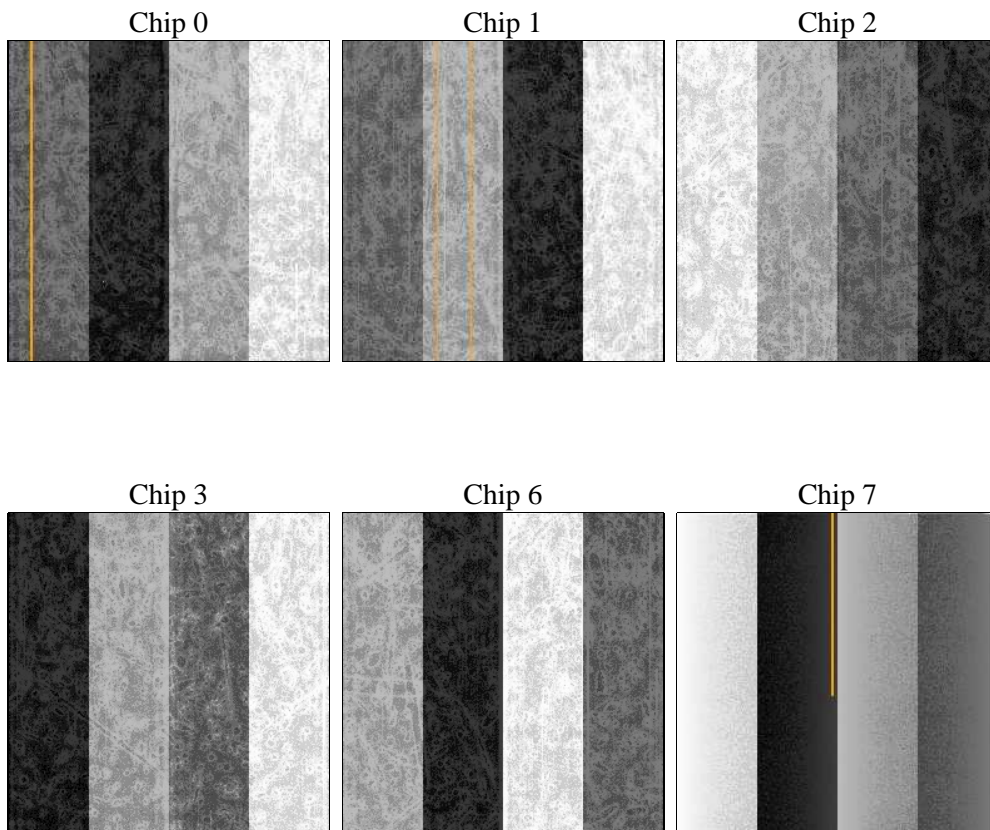
2 OBI

2.1 OBI

2.1.1 Images



2.1.2 Bias



2.1.3 Parameters

obi_num	1	Obi number	sched_exp_time	28000.000000	[s] Scheduled observation exposure time
ascdsver	8.4.4	Processing system revision	ontime	28159.958914816	Sum of GTIs [s]
caldbver	4.4.9	 	ontime0	28159.95892483	Sum of GTIs [s]
date	2012-04-29T14:27:59	Date and time of file creation	ontime1	28153.476954341	Sum of GTIs [s]
revision	2	Processing version of data	ontime2	28159.959014475	Sum of GTIs [s]
			ontime3	28159.958914816	Sum of GTIs [s]
			ontime6	28153.477063835	Sum of GTIs [s]
			ontime7	28163.199895144	Sum of GTIs [s]
			l1events	1259990	Number of level 1 events

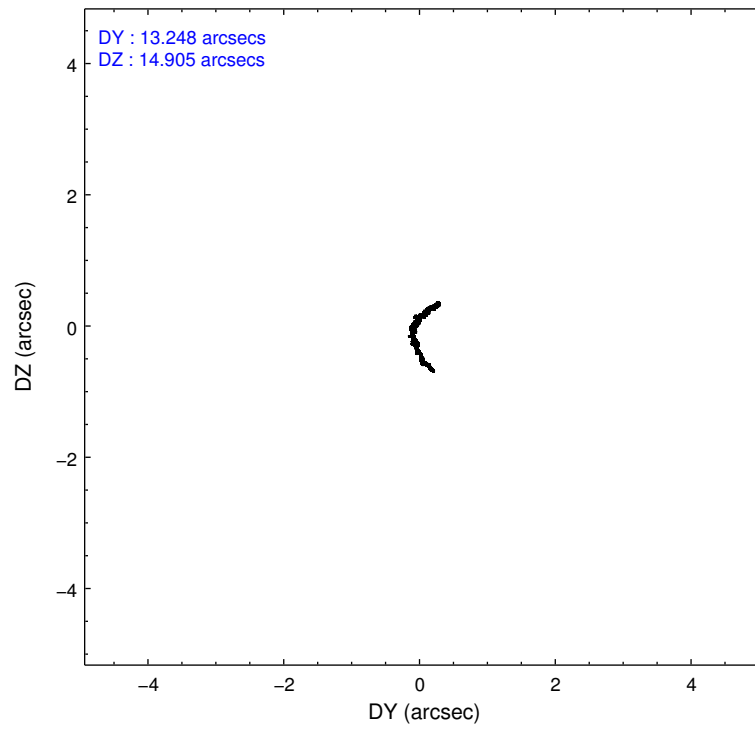
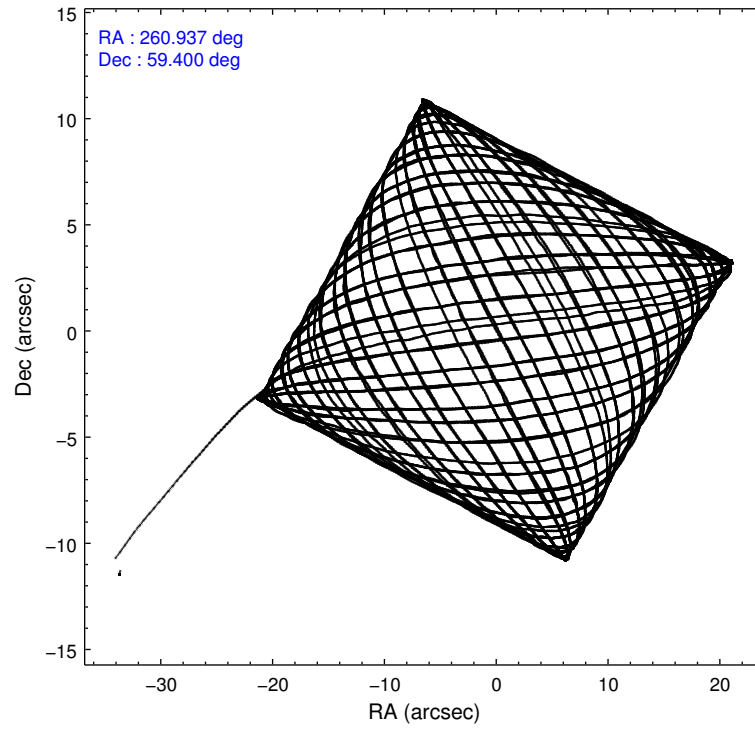
2.1.4 Events

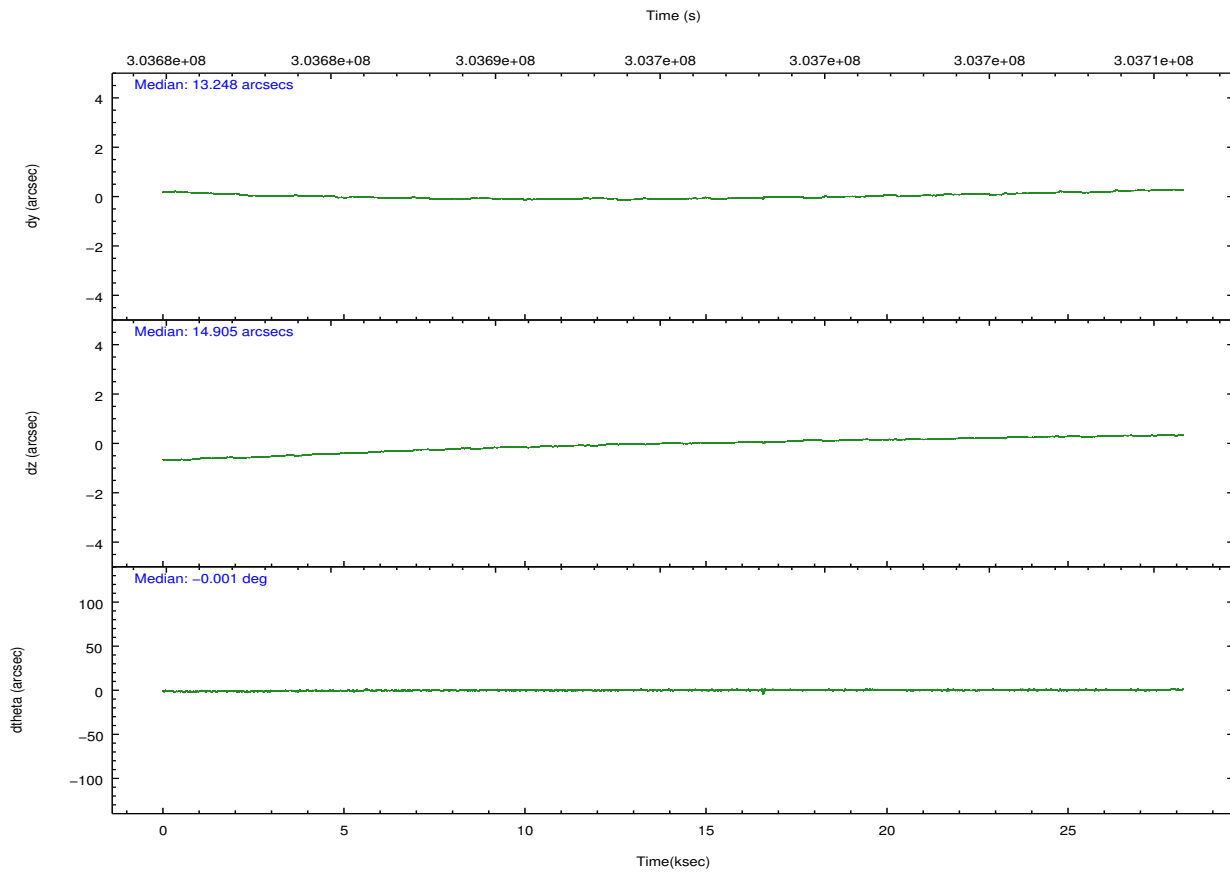
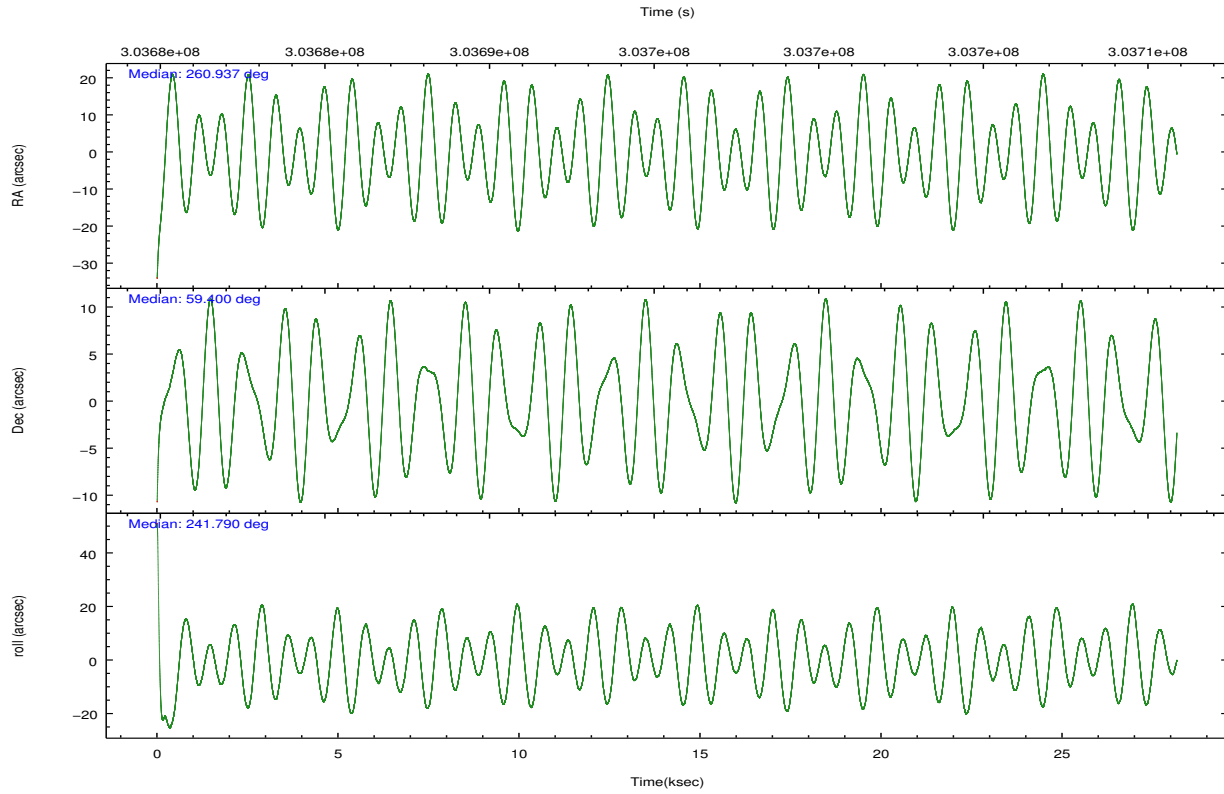
	ccd 0	ccd 1	ccd 2	ccd 3	ccd 6	ccd 7		ccd 0	ccd 1	ccd 2	ccd 3	ccd 6	ccd 7
level 1 events	202701	194530	224337	211708	225994	200720	grade 0 events	7524	7519	7511	7357	7540	9961
rejected events	181972	173040	204131	192032	204690	101873		3%	3%	3%	3%	3%	4%
rejected %	89%	88%	90%	90%	90%	50%	grade 1 events	122	94	114	128	103	289
								0%	0%	0%	0%	0%	0%
							grade 2 events	4974	4778	4786	4103	4876	20877
								2%	2%	2%	1%	2%	10%
							grade 3 events	2355	2439	2168	2195	2326	9429
								1%	1%	0%	1%	1%	4%
							grade 4 events	2213	2412	2269	2243	2287	9347
								1%	1%	1%	1%	1%	4%
							grade 5 events	6062	6684	5775	7283	7340	21574
								2%	3%	2%	3%	3%	10%
							grade 6 events	3689	4364	3497	3802	4302	49384
								1%	2%	1%	1%	1%	24%
							grade 7 events	175762	166240	198217	184597	197220	79859
								86%	85%	88%	87%	87%	39%

2.2 Compared Parameters

Parameter	Planned	Actual	Parameter	Planned	Actual
Instrument	ACIS	ACIS	Obspar format version number	7	7
Detector	ACIS-012367	ACIS-012367	Obspar file type	PREDICTED	ACTUAL
Grating	NONE	NONE	Obspar update status	NONE	UPDATED
Data mode	VFAINT	VFAINT	CCD I0 on	Y	Y
Observation mode	POINTING	POINTING	CCD I1 on	Y	Y
[deg] Pointing RA	260.935303	260.9371937334369	CCD I2 on	Y	Y
[deg] Pointing Dec	59.427297	59.39979910491137	CCD I3 on	Y	Y
[deg] Pointing Roll	241.588841	241.7959306071211	CCD S0 on	N	N
[mm] SIM focus pos	-0.782348	-0.7809083437167272	CCD S1 on	N	N
[mm] SIM defocus	0	0.001439871863259334	CCD S2 on	O1	Y
[mm] SIM translation stage pos	-233.992463	-233.9897249090783	CCD S3 on	O2	Y
[mm] SIM translation stage offset	0.4	0.3972719061486032	CCD S4 on	N	N
[s] Observation start time (MET)	303681487.184000	303680405.25627	CCD S5 on	N	N
Observation start date	2007-08-16T19:57:02	2007-08-16T19:40:05	Number of optional ACIS chips dropped	0	0
[s] Observation end time (MET)	303709487.184000	303710156.3952	On-chip summing requested	N	N
Observation end date	2007-08-17T03:43:42	2007-08-17T03:55:56	Subarray requested	NONE	NONE
Read mode	TIMED	TIMED	Alternating exposures requested	N	N
			[s] Primary exposure time	0.000000	3.2

2.3 Aspect



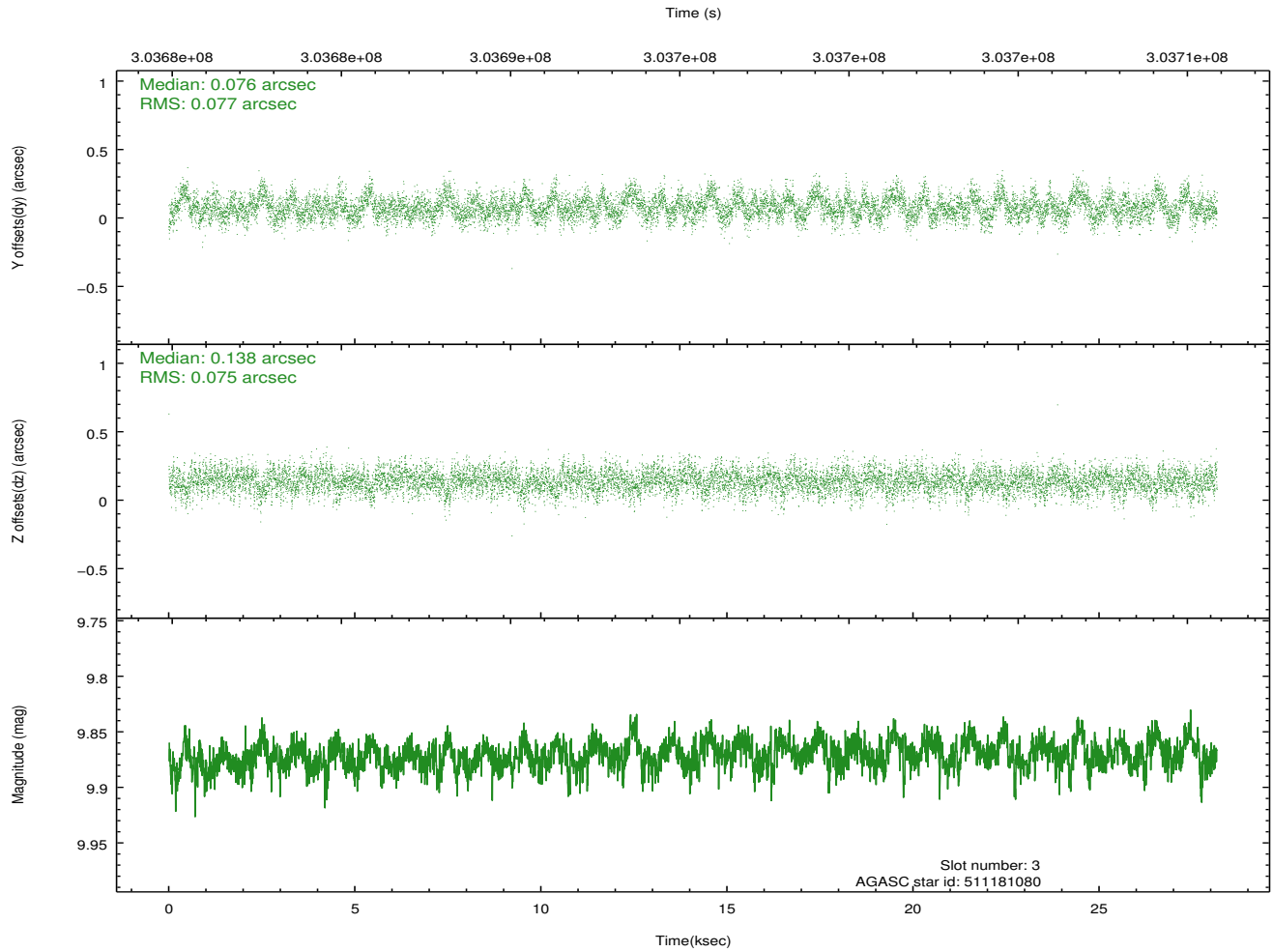
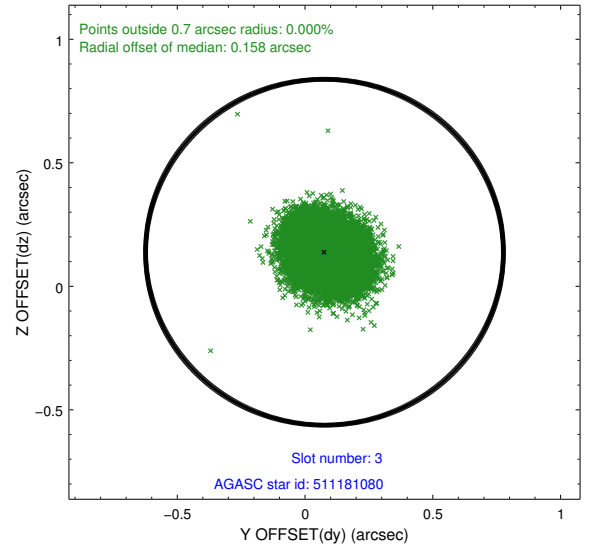
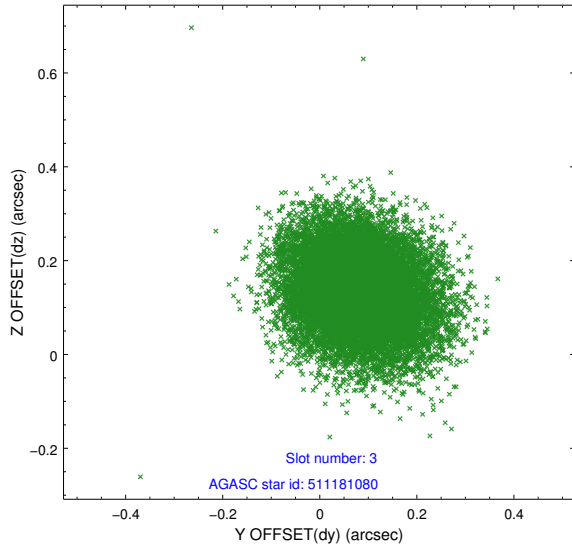


Slot Statistics

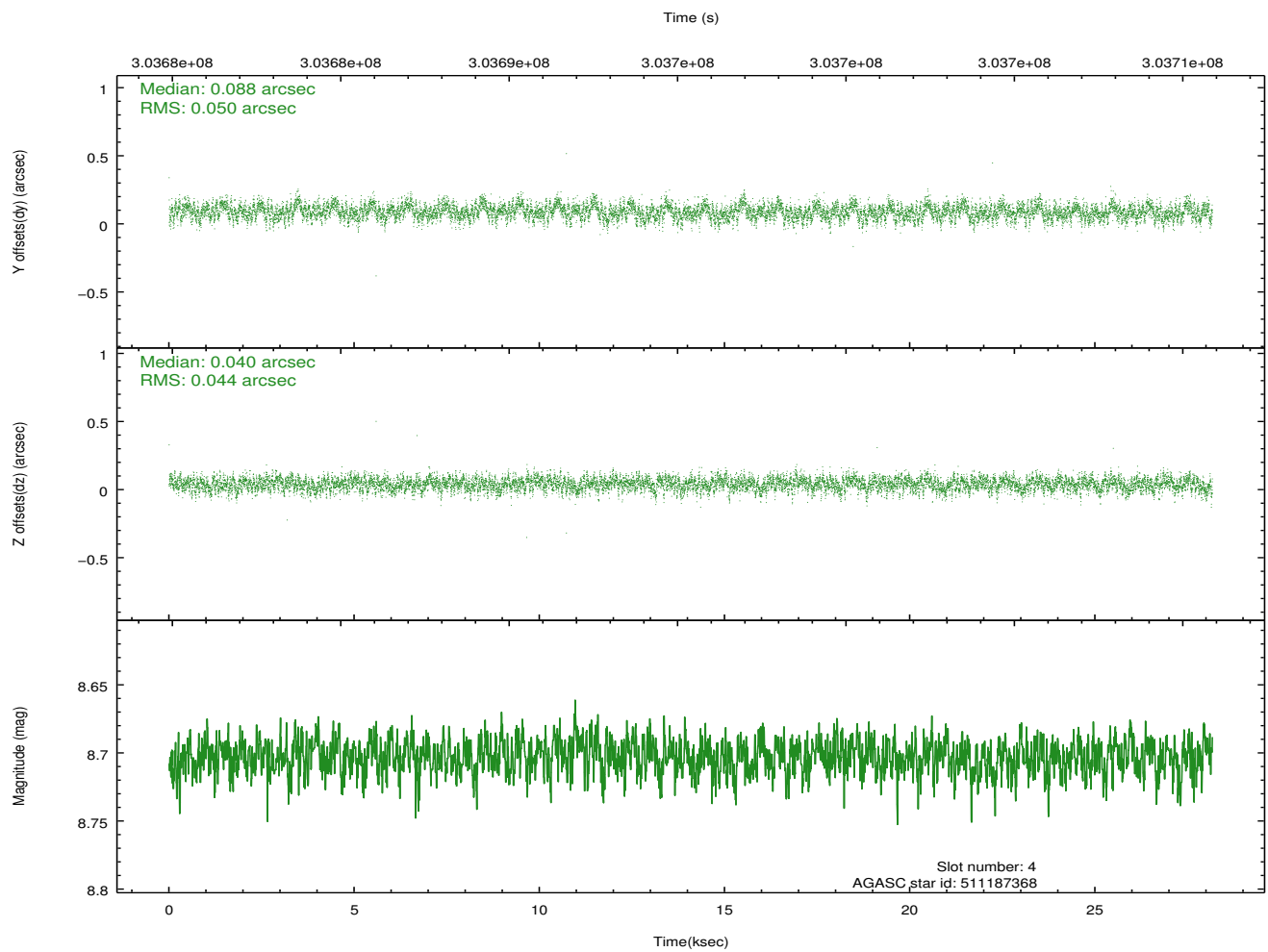
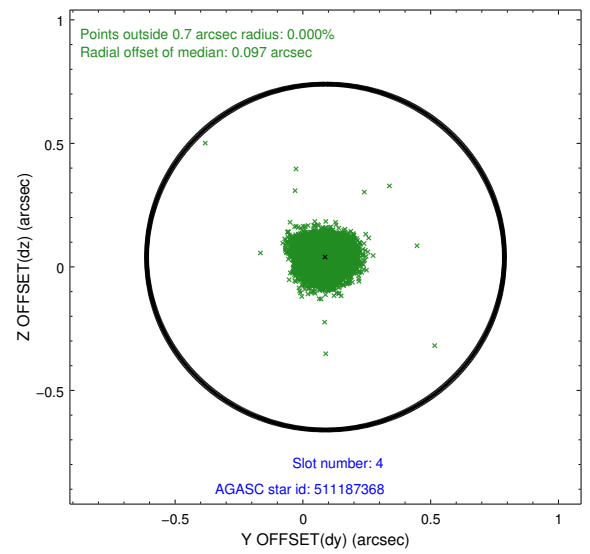
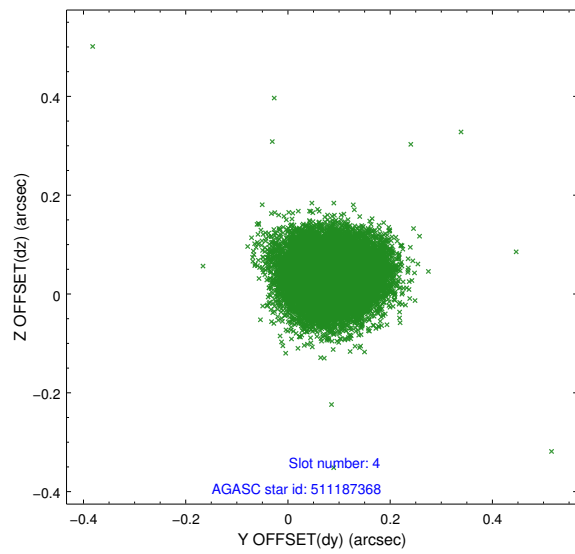
slot	status	id	mag	n_pts	med_dy	med_dz	dr1	dr2	ra	dec	mean_y	mean_z
0	FID	ACIS-I-1	7.23	6870	0.074	-0.050	0.008	0.013	0.000000	0.000000	926.31	-830.24
1	FID	ACIS-I-5	7.22	6869	-0.221	0.072	0.008	0.014	0.000000	0.000000	-1822.02	1067.37
2	FID	ACIS-I-6	7.23	6871	0.054	0.049	0.011	0.019	0.000000	0.000000	391.77	1711.92
3	GUIDE	511181080	9.87	13725	0.076	0.138	0.114	0.186	260.972109	59.782719	-1156.92	-550.46
4	GUIDE	511187368	8.70	13734	0.088	0.040	0.070	0.112	260.113514	59.198929	1435.90	-945.54
5	GUIDE	511189312	6.91	13741	-0.063	-0.139	0.083	0.132	261.520153	58.651895	1929.84	2289.16
6	GUIDE	511191200	9.18	13733	0.005	-0.040	0.086	0.142	261.055405	58.698675	2200.24	1445.83
7	GUIDE	511186496	7.89	13738	-0.118	0.001	0.071	0.113	261.617553	59.038333	624.77	1774.63

2.4 Star Slots

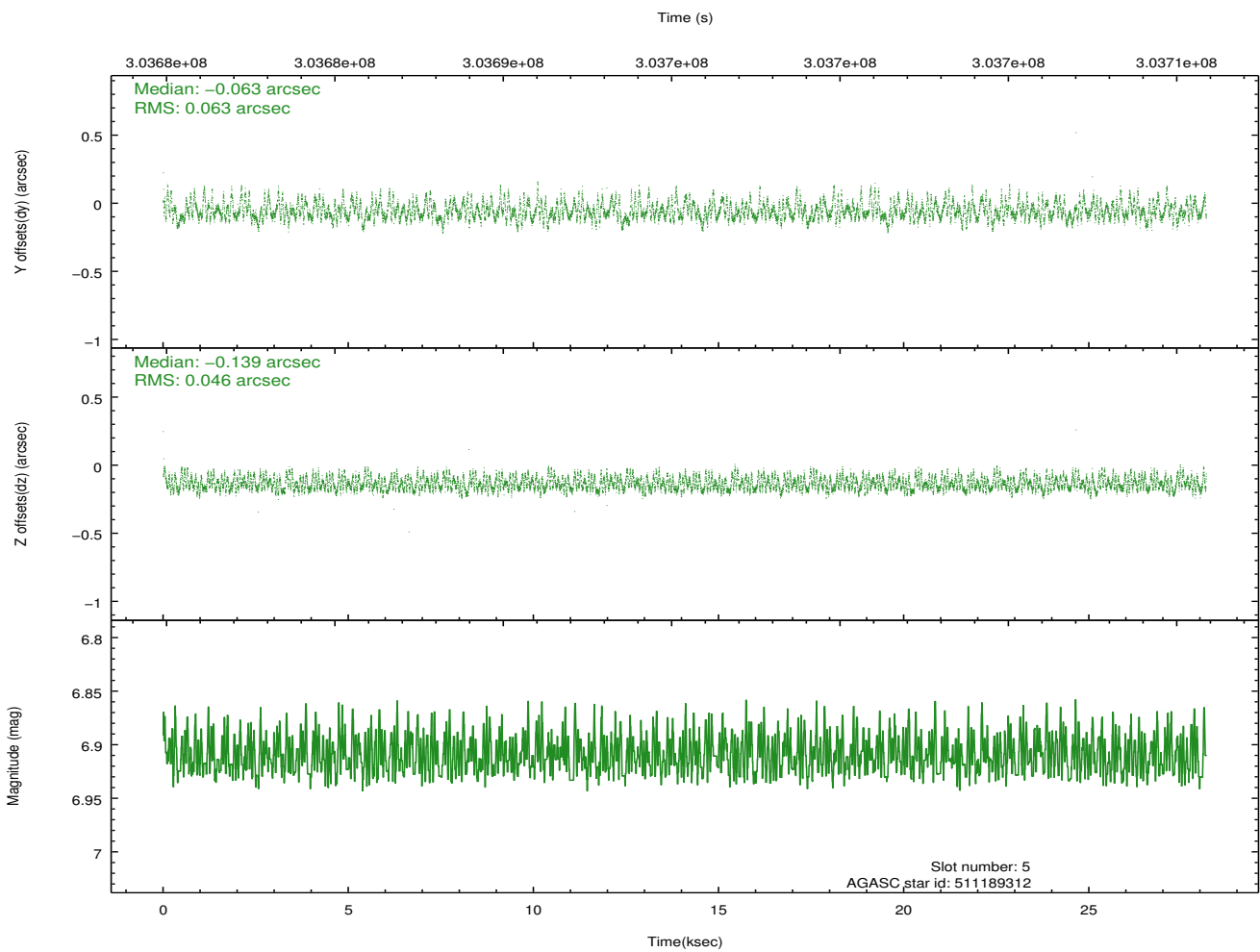
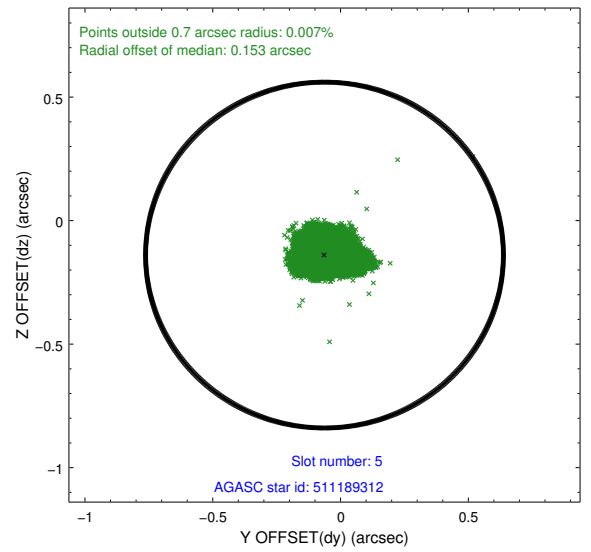
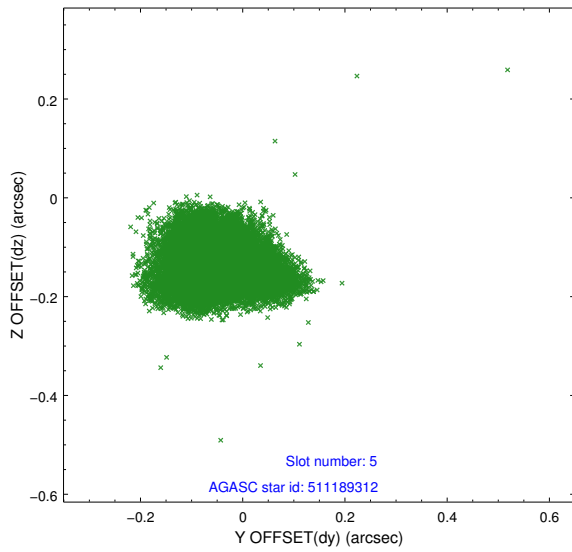
2.4.1 Slot 3



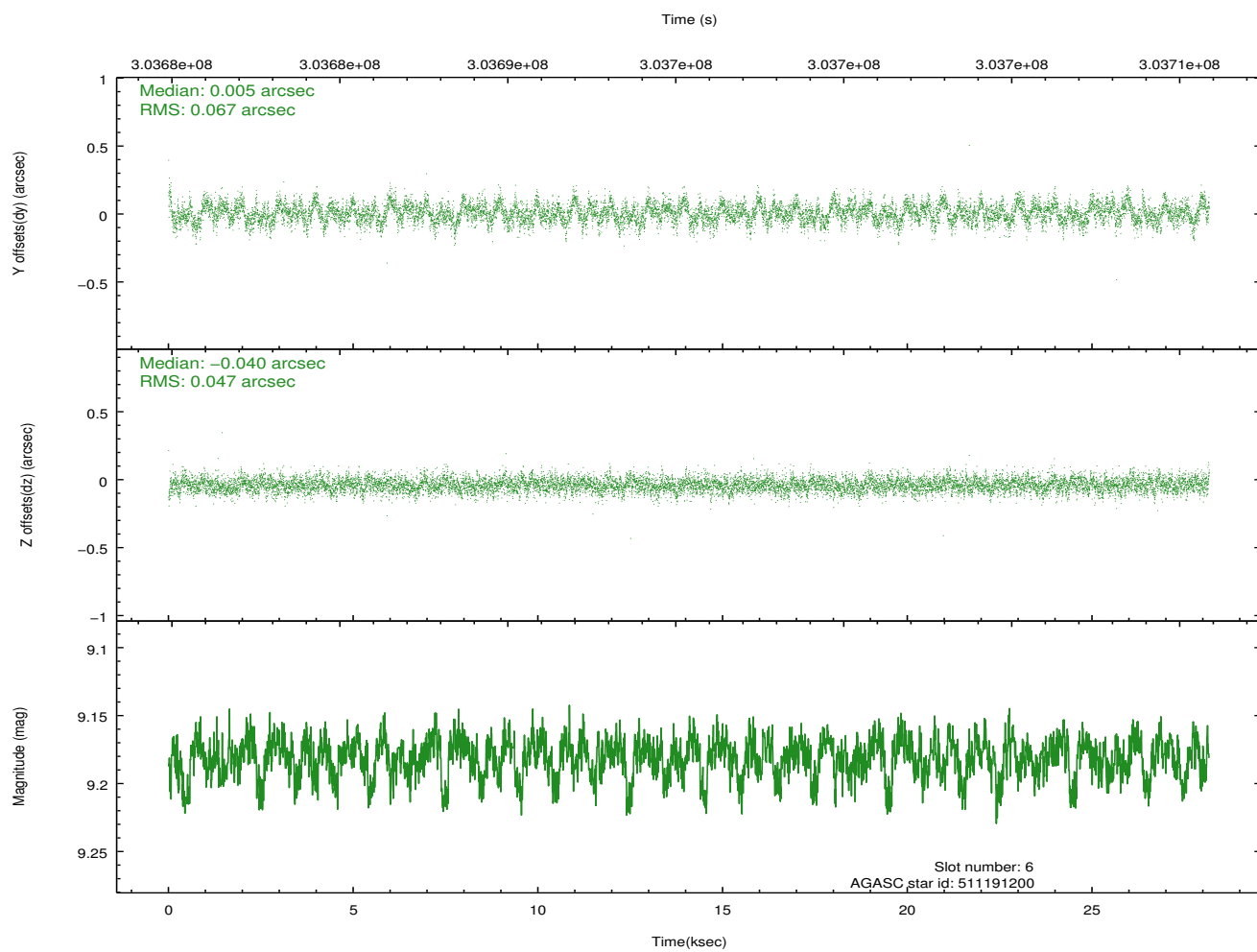
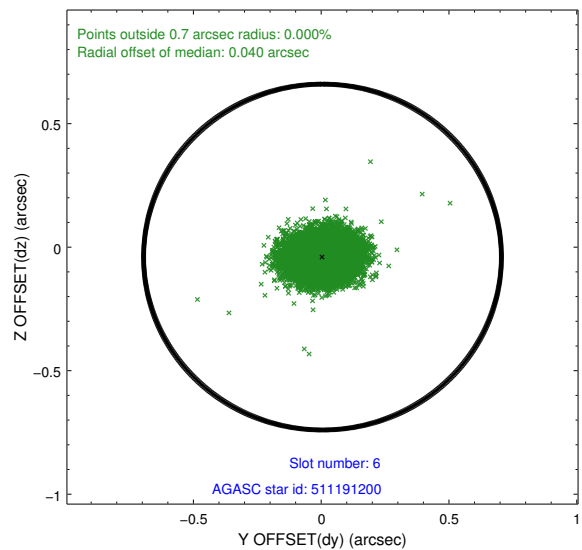
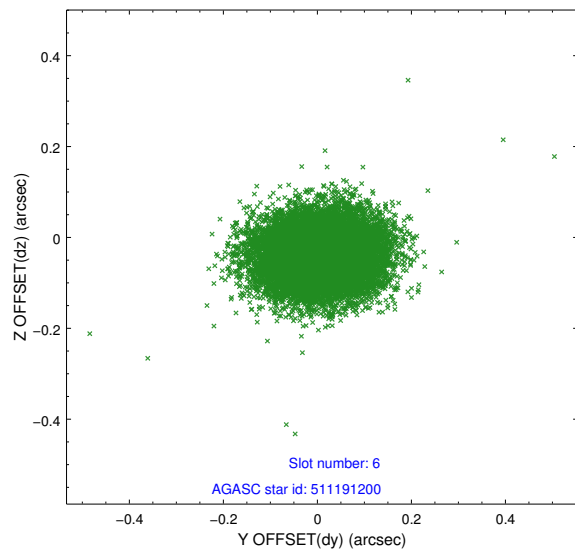
2.4.2 Slot 4



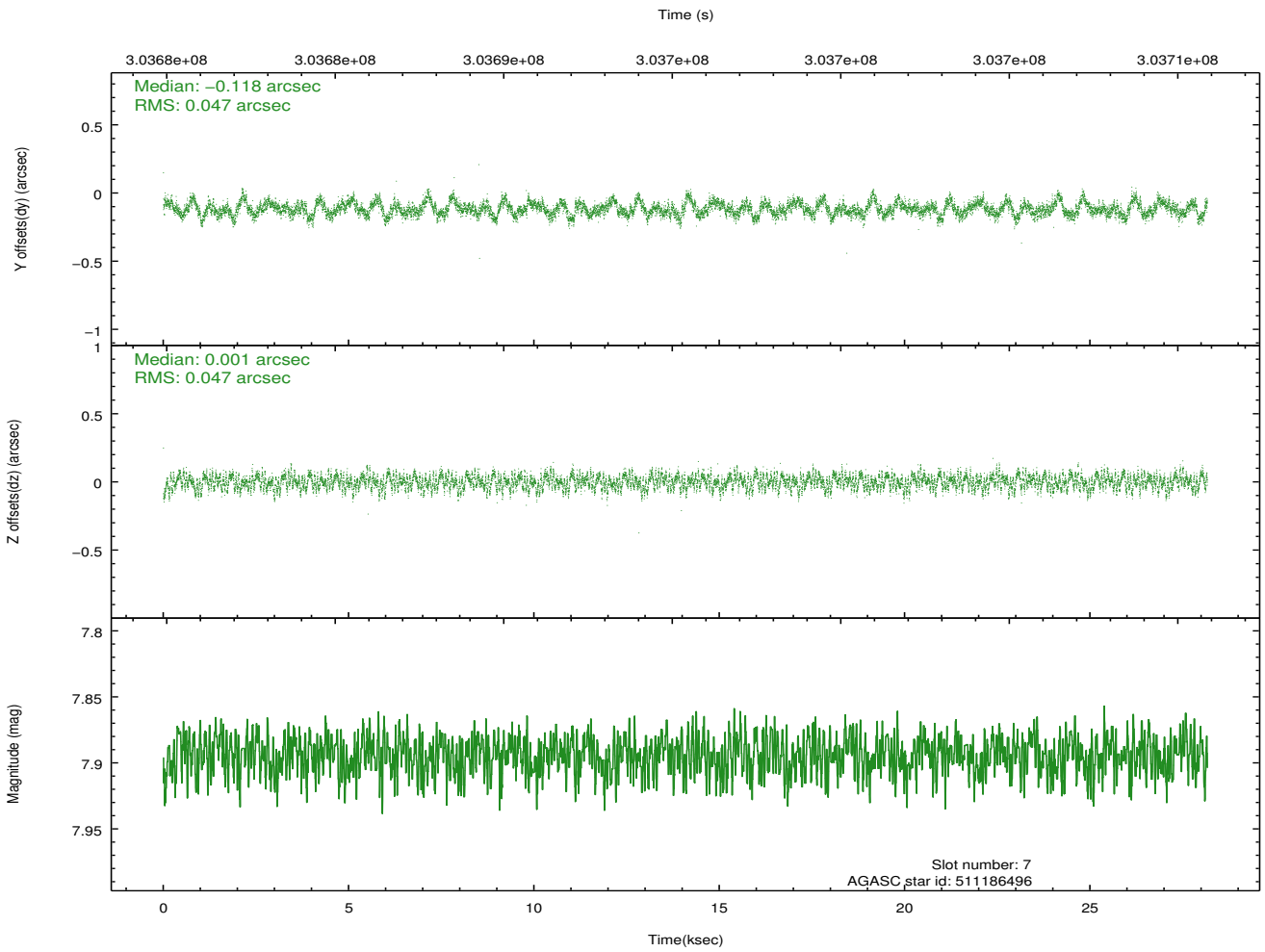
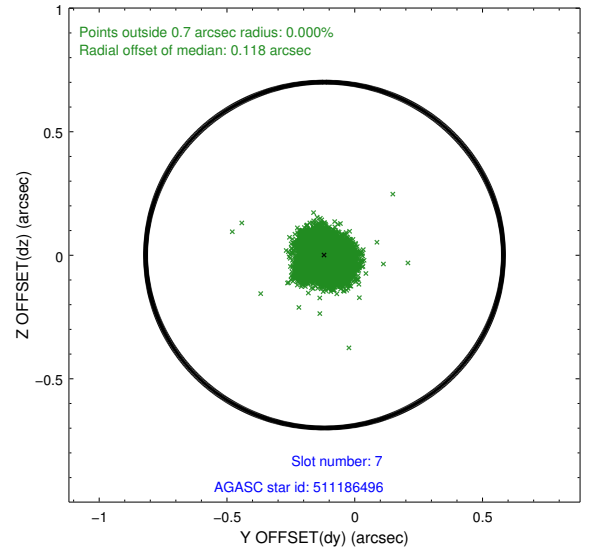
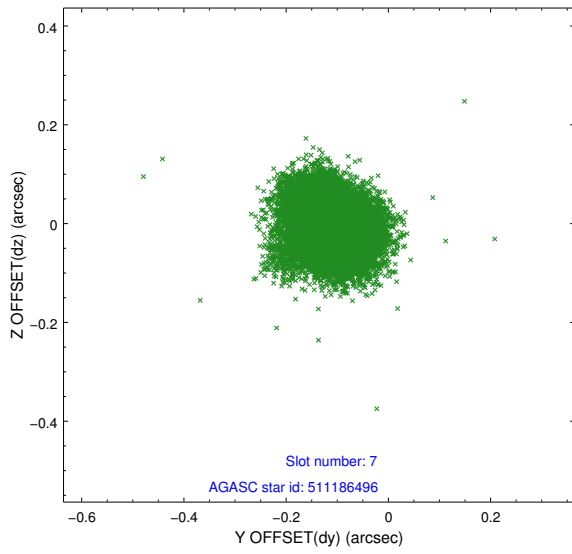
2.4.3 Slot 5



2.4.4 Slot 6

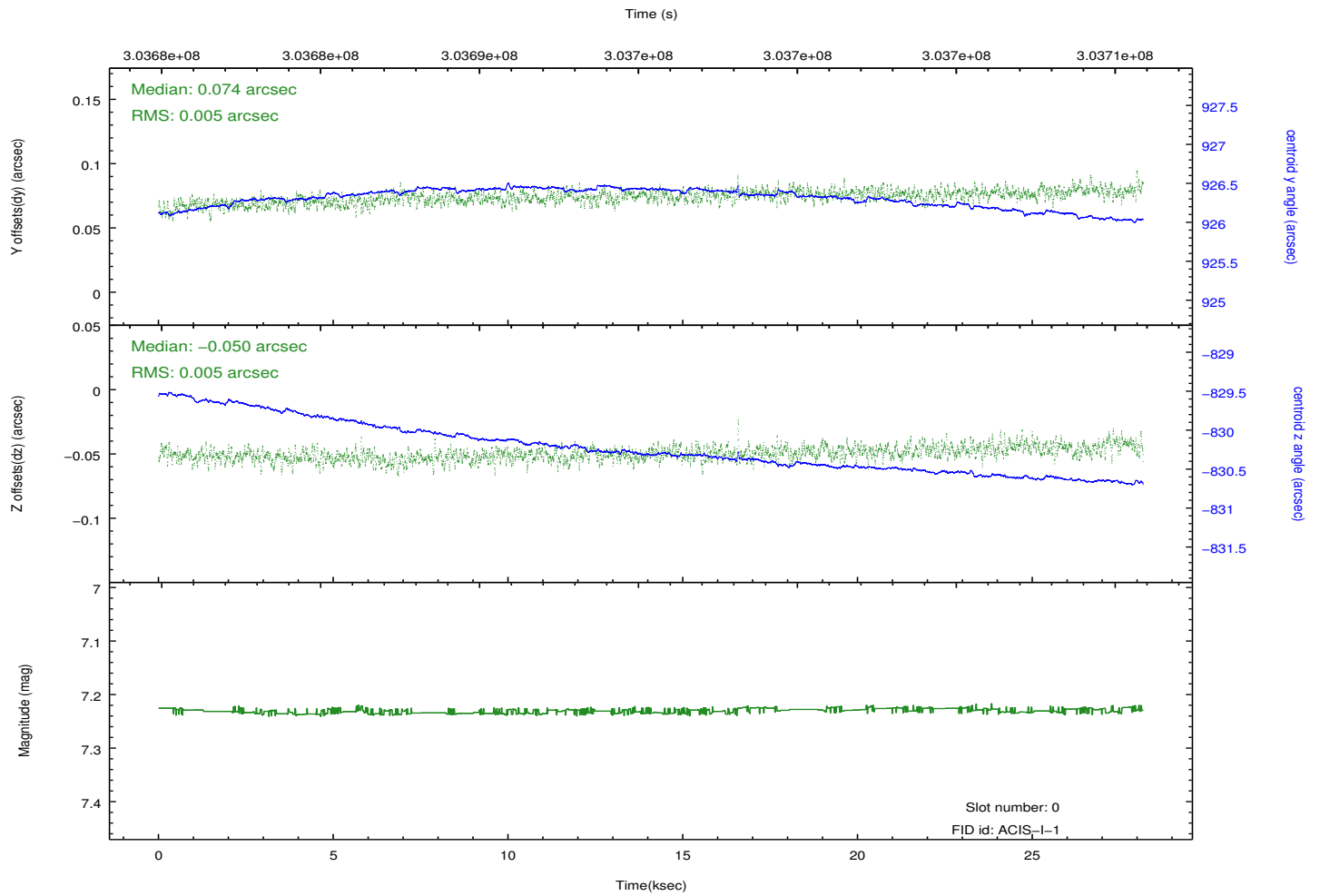
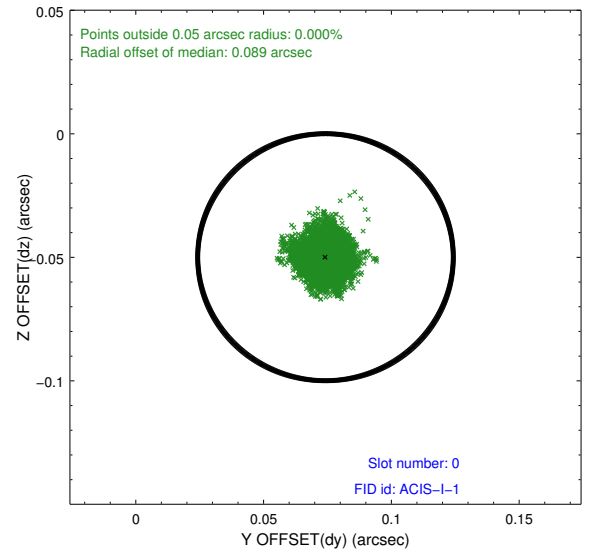
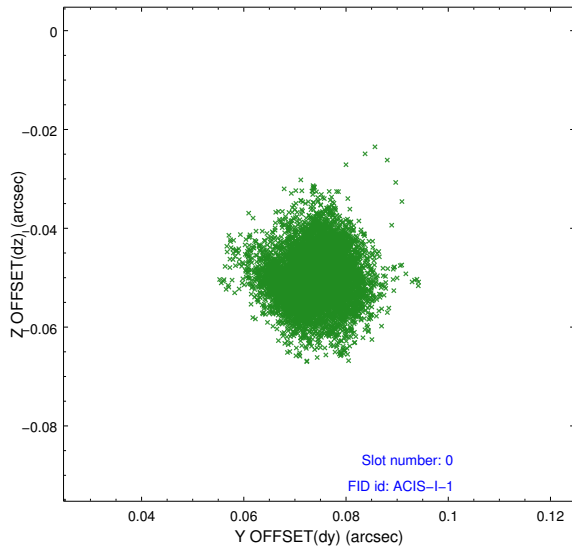


2.4.5 Slot 7

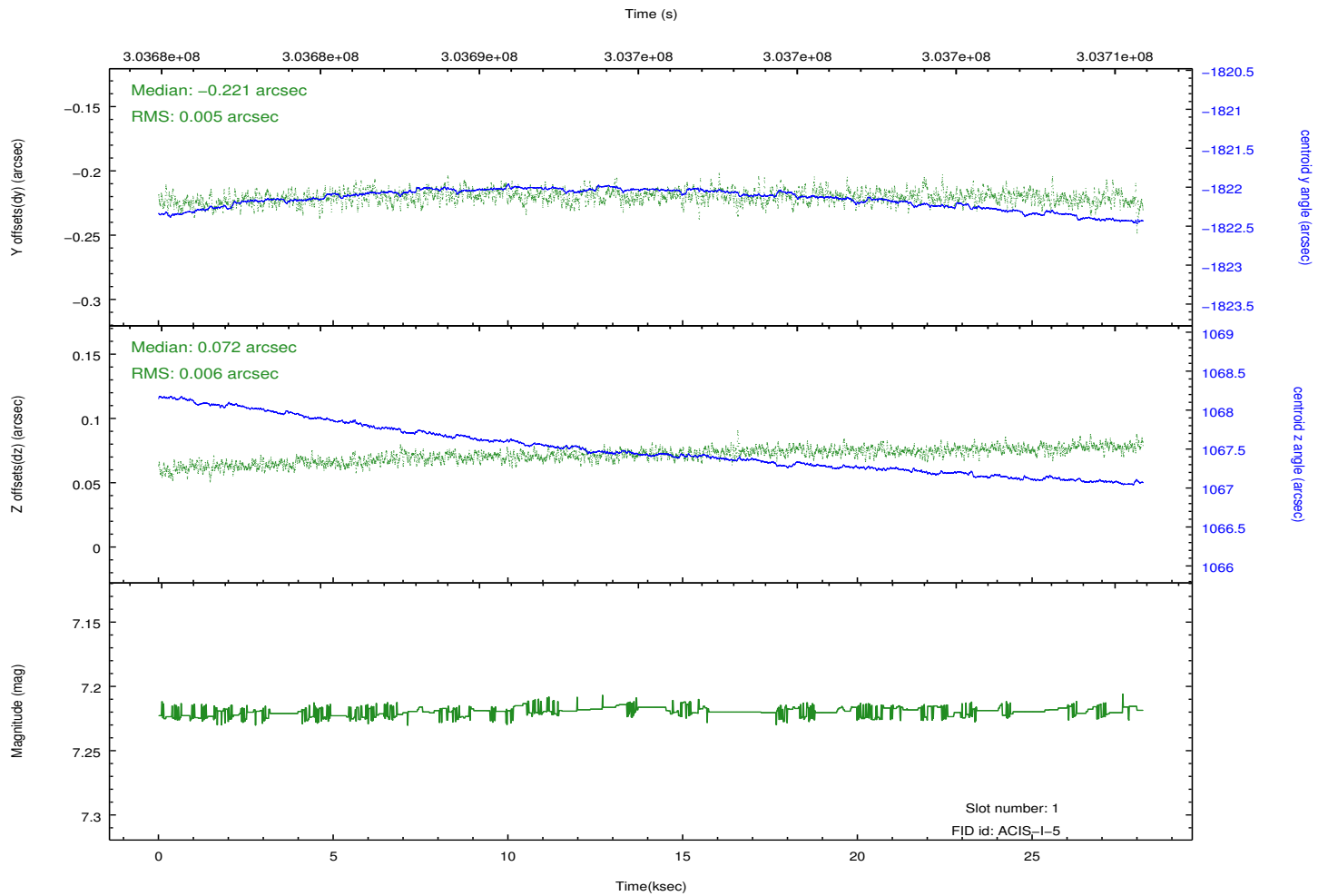
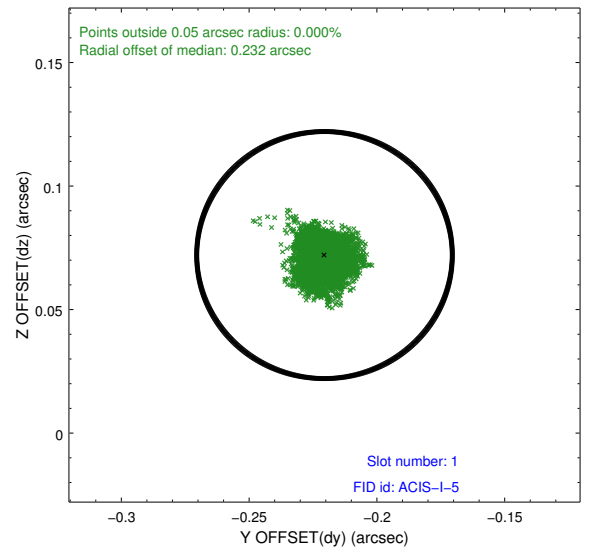
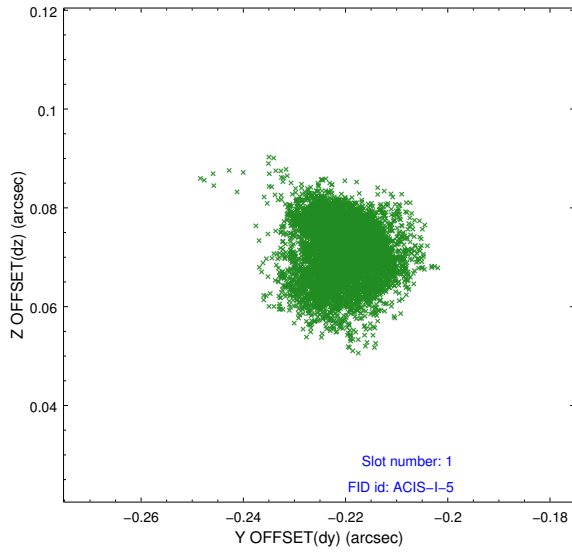


2.5 FID Slots

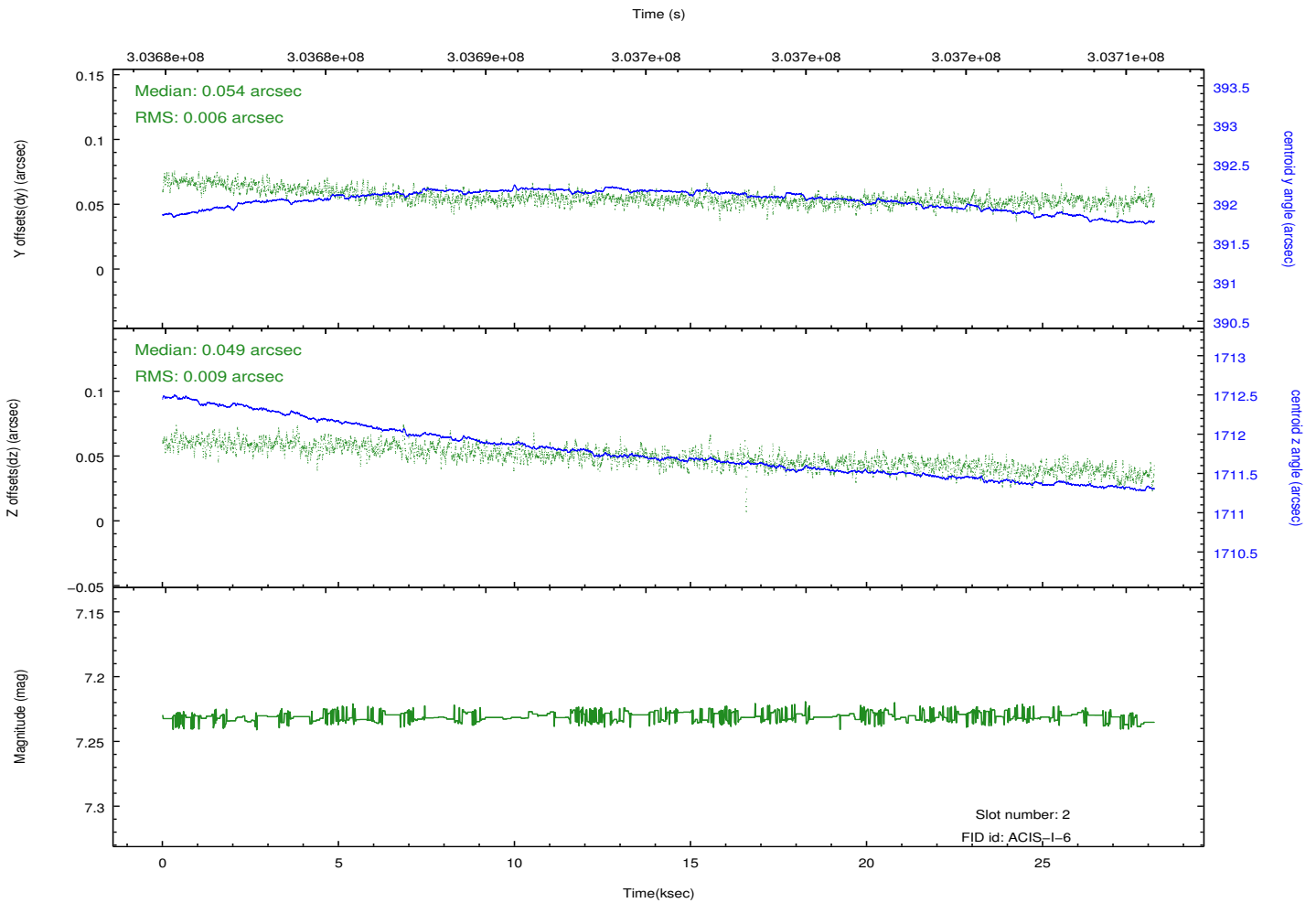
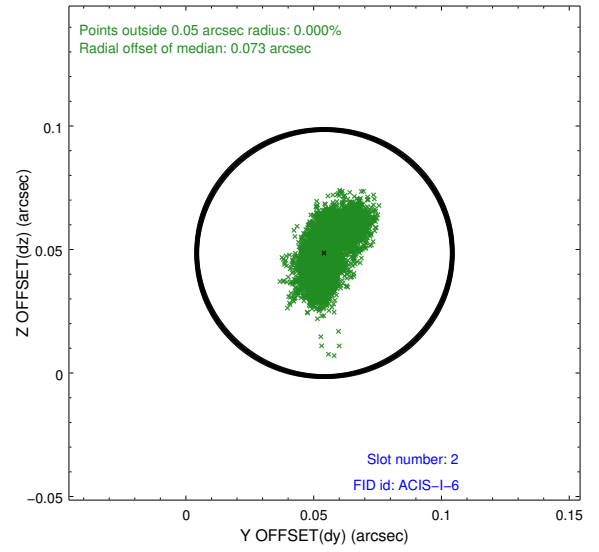
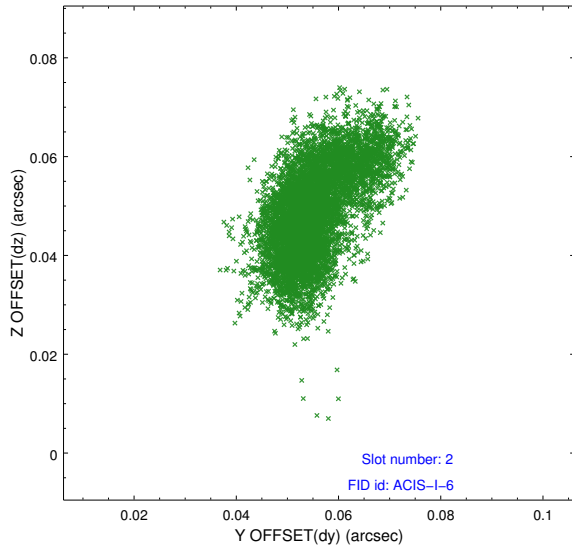
2.5.1 Slot 0



2.5.2 Slot 1



2.5.3 Slot 2



A Summary

A.1 Status

V&V Scientist	Beth Sundheim
V&V Date (YYYY-MM-DD)	2012.05.02
V&V Edition	1
V&V Disposition and Status	OK
V&V Charge Time	28.1599589

A.2 Comments