

V&V Reference Report

L2 ASCDS Version : 8.4.4

Observation 7868 - L2 Version 2
Chandra X-Ray Center

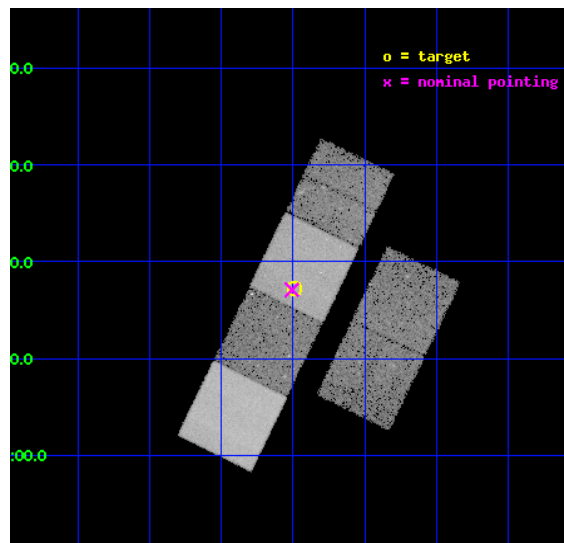
L2 Processing Date : May 8 2012

Contents

1	Front	2
2	OBI	3
2.1	OBI	3
2.1.1	Images	3
2.1.2	Bias	3
2.1.3	Parameters	4
2.1.4	Events	4
2.2	Compared Parameters	5
2.3	Aspect	6
2.4	Star Slots	9
2.4.1	Slot 3	9
2.4.2	Slot 4	10
2.4.3	Slot 5	11
2.4.4	Slot 6	12
2.4.5	Slot 7	13
2.5	FID Slots	14
2.5.1	Slot 0	14
2.5.2	Slot 1	15
2.5.3	Slot 2	16
A	Summary	17
A.1	Status	17
A.2	Comments	17

1 Front

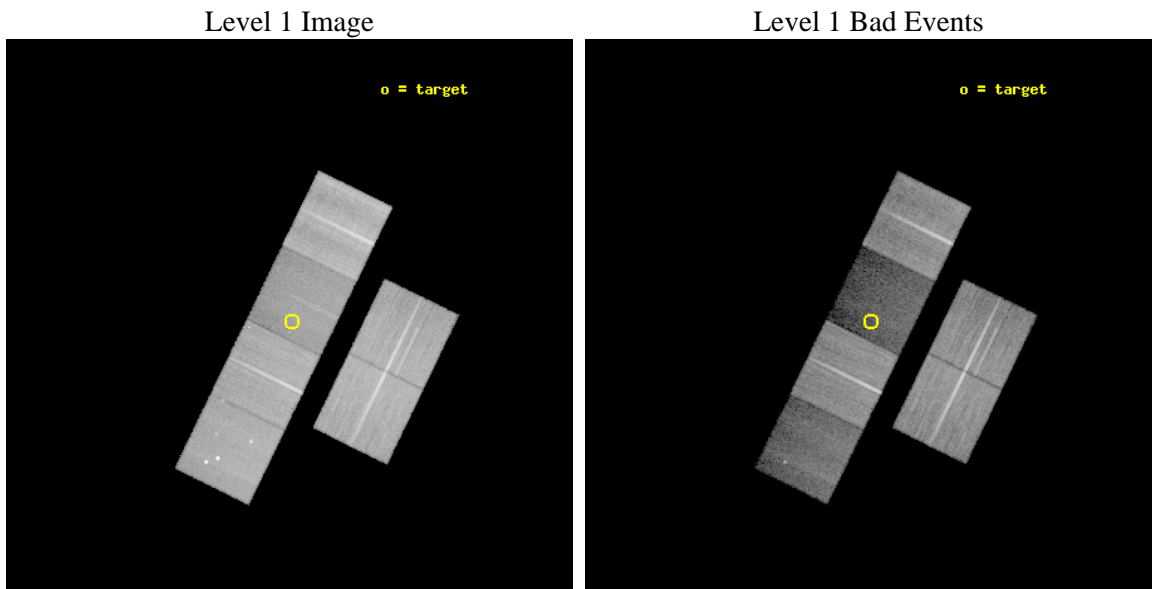
seq_num	701532	Sequence number
obs_id	7868	Observation id
title	Rapid Follow-Up Observations of Tidal Disruption Events Discovered in the GALEX Deep Imaging Survey	Proposal title
observer	Dr. Suvi Gezari	Principal investigator
object	Tidal Disruption Event	Source name
dtcycle	0	
cycle	P	events from which exps? Prim/Second/Both
ra_targ	352.997917	Observer's specified target RA [deg]
dec_targ	0.287389	Observer's specified target Dec [deg]
ra_nom	353.00202083762	Nominal RA [deg]
dec_nom	0.28480627363666	Nominal Dec [deg]
roll_nom	296.01409404069	Nominal Roll [deg]
revision	2	Processing version of data
ontime	30134.3998878	Sum of GTIs [s]
livetime	29752.819971664	Livetime [s]
ontime2	30131.158897579	Sum of GTIs [s]
ontime3	30131.158887565	Sum of GTIs [s]
ontime5	30134.3998878	Sum of GTIs [s]
ontime6	30134.3998878	Sum of GTIs [s]
ontime7	30134.3998878	Sum of GTIs [s]
ontime8	30134.3998878	Sum of GTIs [s]
l2events	227746	Number of level 2 events



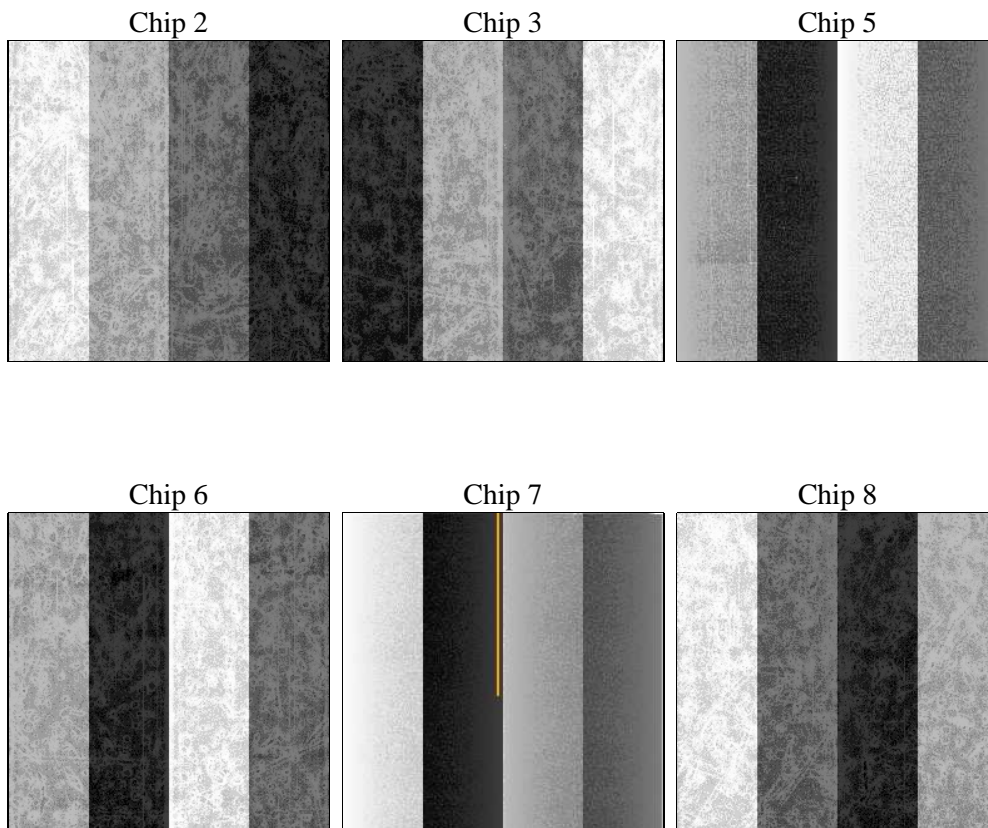
2 OBI

2.1 OBI

2.1.1 Images



2.1.2 Bias



2.1.3 Parameters

obi_num	0	Obi number	sched_exp_time	30000.000000	[s] Scheduled observation exposure time
ascdsver	8.4.4	Processing system revision	ontime	30134.3998878	Sum of GTIs [s]
caldbver	4.4.9	 	ontime2	30131.158897579	Sum of GTIs [s]
date	2012-05-08T15:25:54	Date and time of file creation	ontime3	30131.158887565	Sum of GTIs [s]
revision	2	Processing version of data	ontime5	30134.3998878	Sum of GTIs [s]
			ontime6	30134.3998878	Sum of GTIs [s]
			ontime7	30134.3998878	Sum of GTIs [s]
			ontime8	30134.3998878	Sum of GTIs [s]
			l1events	1182393	Number of level 1 events

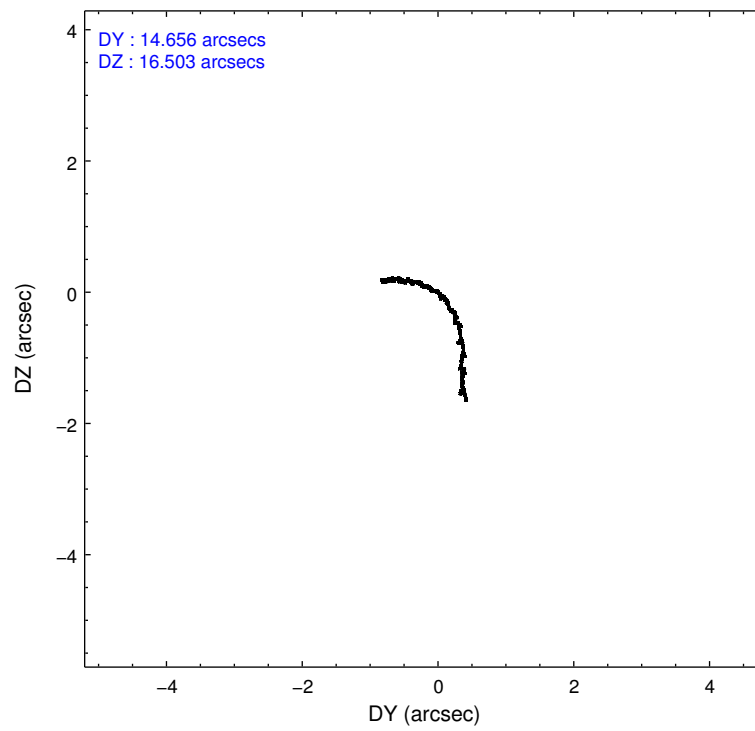
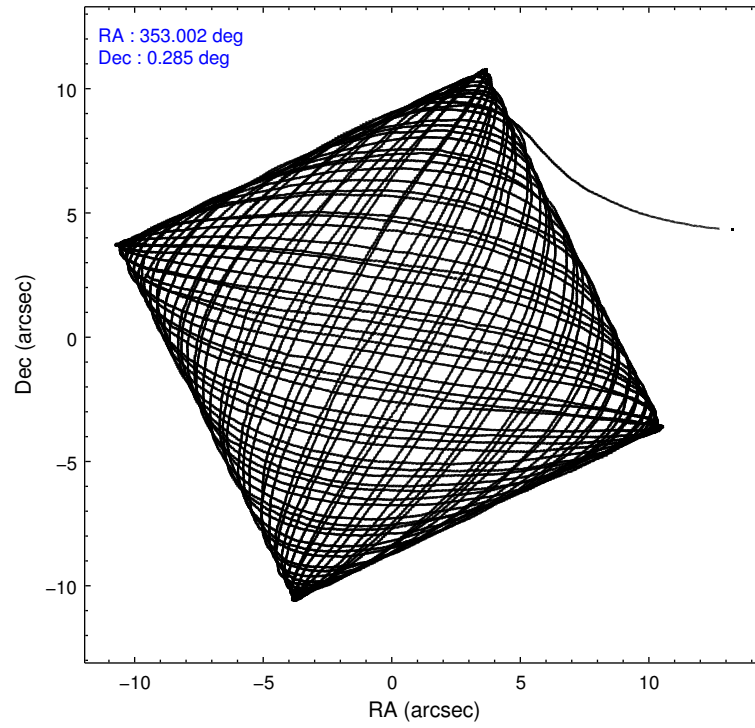
2.1.4 Events

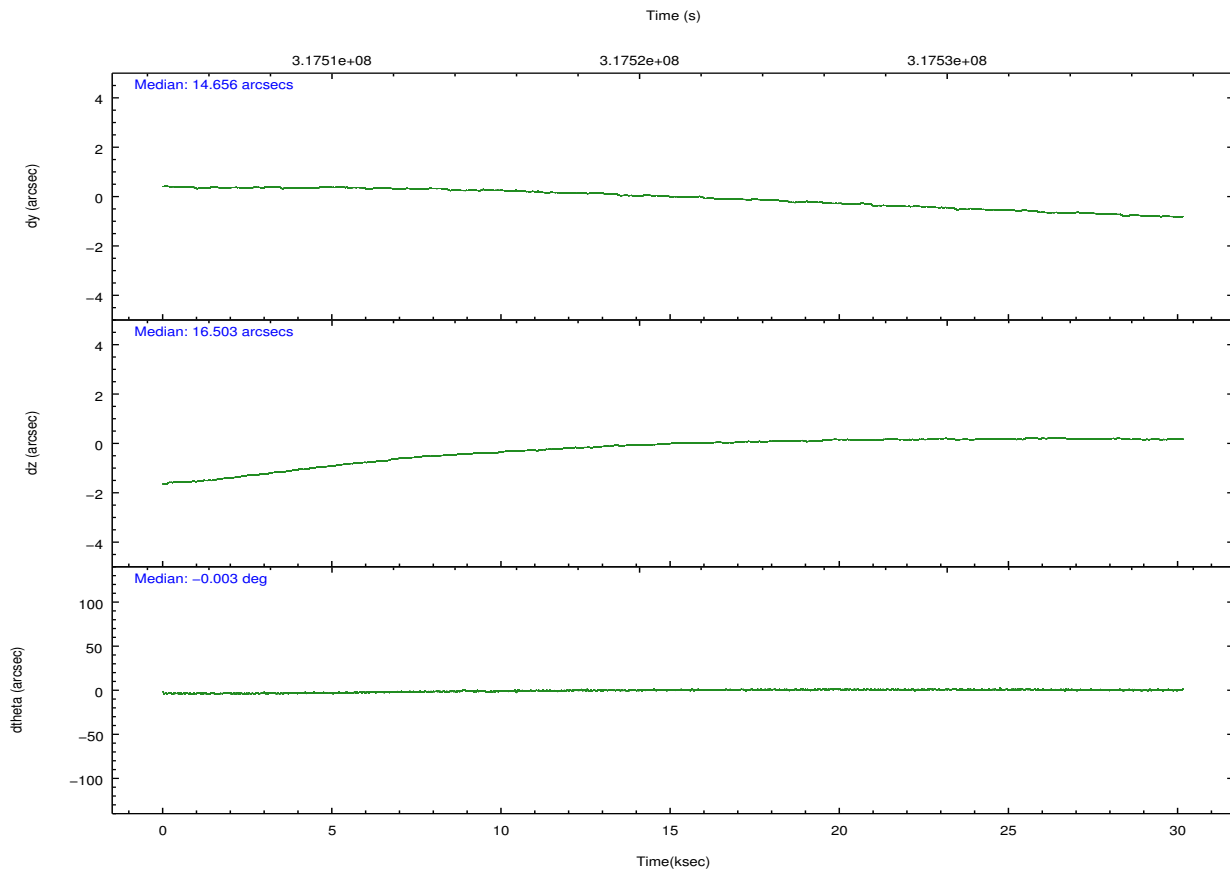
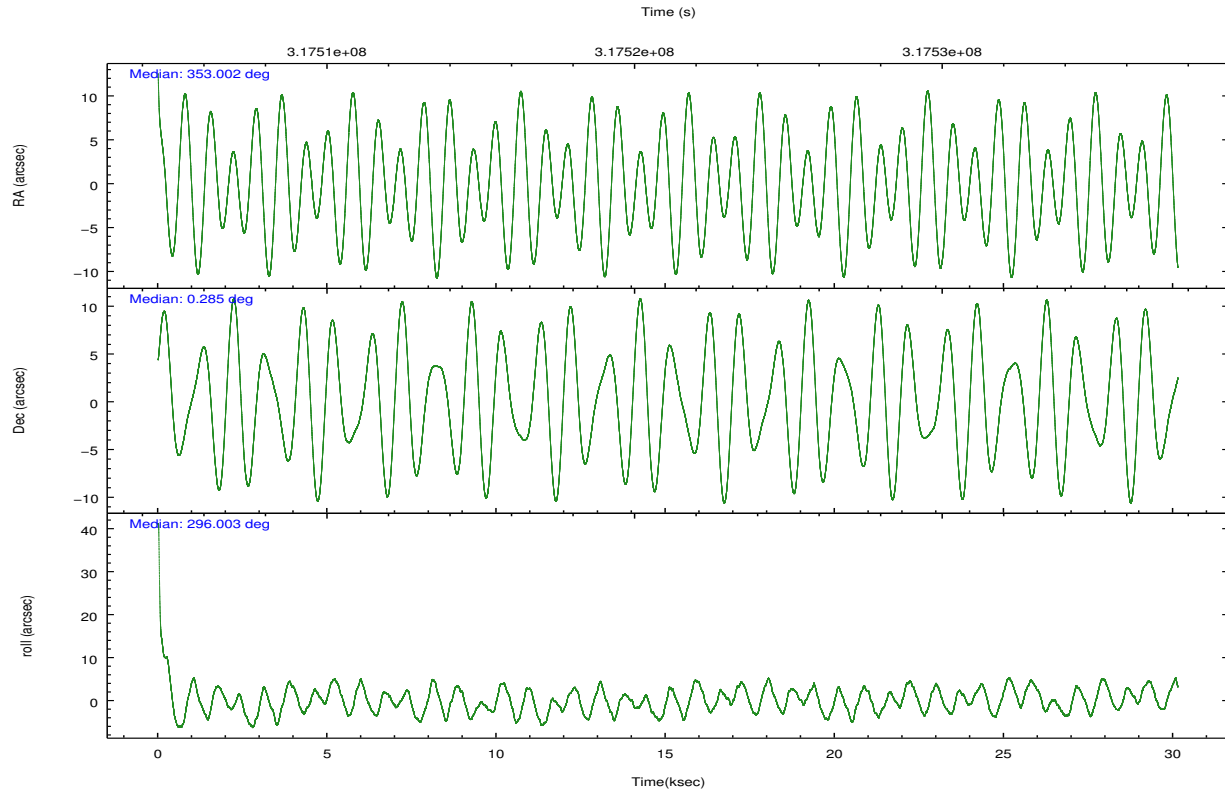
	ccd 2	ccd 3	ccd 5	ccd 6	ccd 7	ccd 8		ccd 2	ccd 3	ccd 5	ccd 6	ccd 7	ccd 8
level 1 events	223977	199734	188088	203470	121152	245972	grade 0 events	7306	6596	18295	7587	9558	19329
rejected events	206140	183676	75078	185111	51278	179849		3%	3%	9%	3%	7%	7%
rejected %	92%	91%	39%	90%	42%	73%	grade 1 events	127	114	1043	103	304	232
								0%	0%	0%	0%	0%	0%
							grade 2 events	4456	3403	35274	4061	16942	15221
								1%	1%	18%	1%	13%	6%
							grade 3 events	1756	1869	5549	1876	7114	7659
								0%	0%	2%	0%	5%	3%
							grade 4 events	1893	1708	5410	1979	6936	7179
								0%	0%	2%	0%	5%	2%
							grade 5 events	3331	4055	14746	4019	12563	6985
								1%	2%	7%	1%	10%	2%
							grade 6 events	2521	2586	49237	2947	29750	17165
								1%	1%	26%	1%	24%	6%
							grade 7 events	202587	179403	58534	180898	37985	172202
								90%	89%	31%	88%	31%	70%

2.2 Compared Parameters

Parameter	Planned	Actual	Parameter	Planned	Actual
Instrument	ACIS	ACIS	Obspar format version number	7	7
Detector	ACIS-235678	ACIS-235678	Obspar file type	PREDICTED	ACTUAL
Grating	NONE	NONE	Obspar update status	NONE	UPDATED
Data mode	VFAINT	VFAINT	CCD I0 on	N	N
Observation mode	POINTING	POINTING	CCD I1 on	N	N
[deg] Pointing RA	352.979134	353.0020208376206	CCD I2 on	O1	Y
[deg] Pointing Dec	0.299772	0.2848062736366557	CCD I3 on	O2	Y
[deg] Pointing Roll	295.857579	296.0140940406936	CCD S0 on	N	N
[mm] SIM focus pos	-0.684267	-0.6828225247311905	CCD S1 on	Y	Y
[mm] SIM defocus	0	0.001444936568705701	CCD S2 on	Y	Y
[mm] SIM translation stage pos	-190.132523	-190.1400660498719	CCD S3 on	Y	Y
[mm] SIM translation stage offset	0	0.00754346686406393	CCD S4 on	O3	Y
[s] Observation start time (MET)	317506174.184000	317504984.26092	CCD S5 on	N	N
Observation start date	2008-01-23T20:08:29	2008-01-23T19:49:44	Number of optional ACIS chips dropped	0	0
[s] Observation end time (MET)	317536174.184000	317537545.4375	On-chip summing requested	N	N
Observation end date	2008-01-24T04:28:29	2008-01-24T04:52:25	Subarray requested	NONE	NONE
Read mode	TIMED	TIMED	Alternating exposures requested	N	N
			[s] Primary exposure time	0.000000	3.2

2.3 Aspect



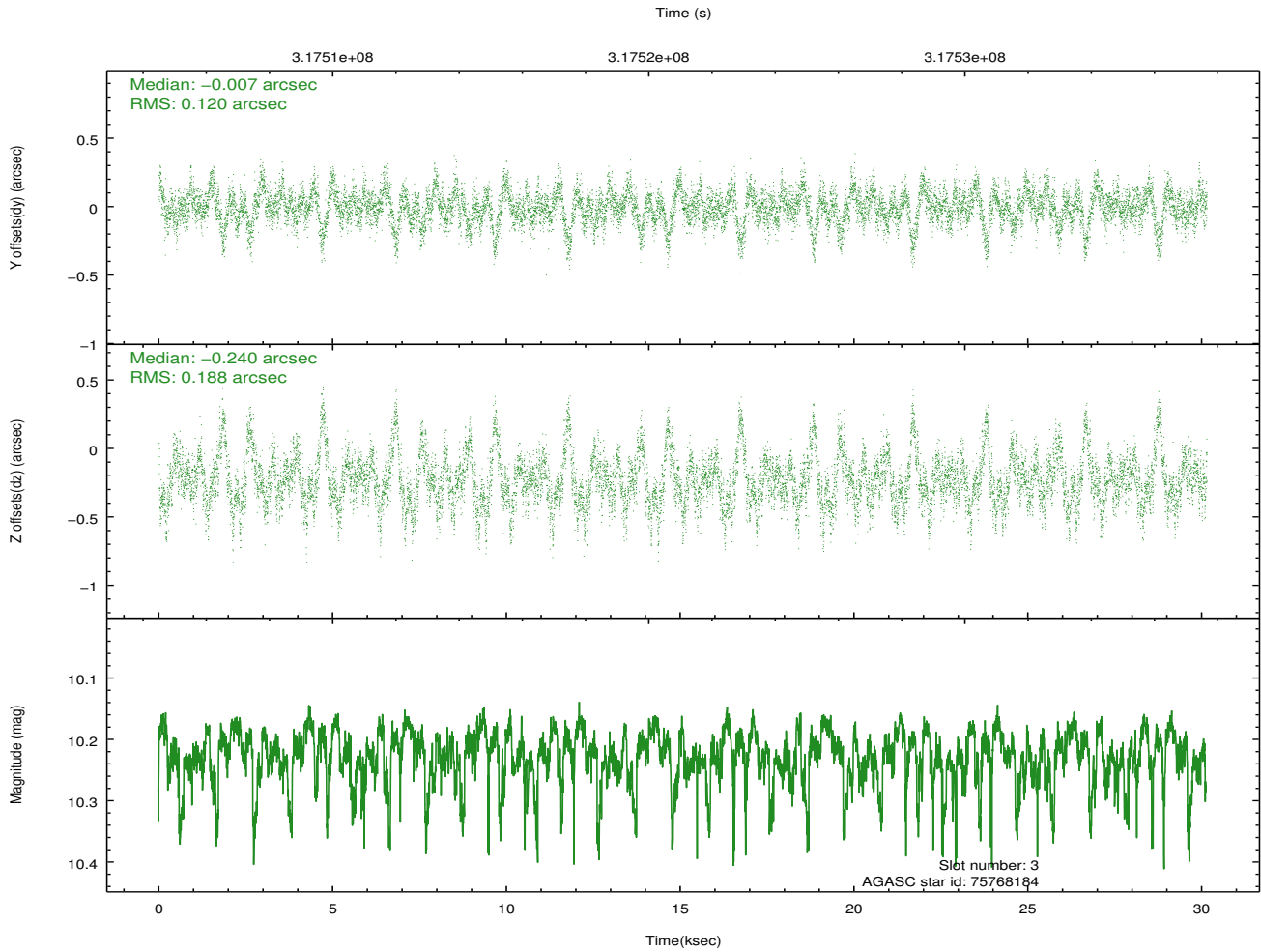
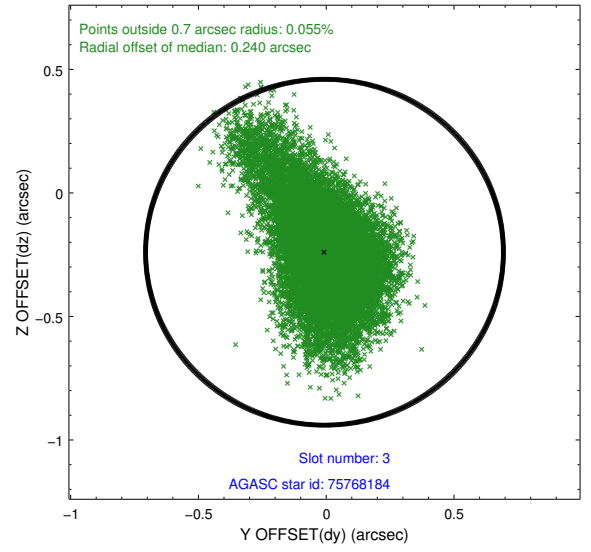
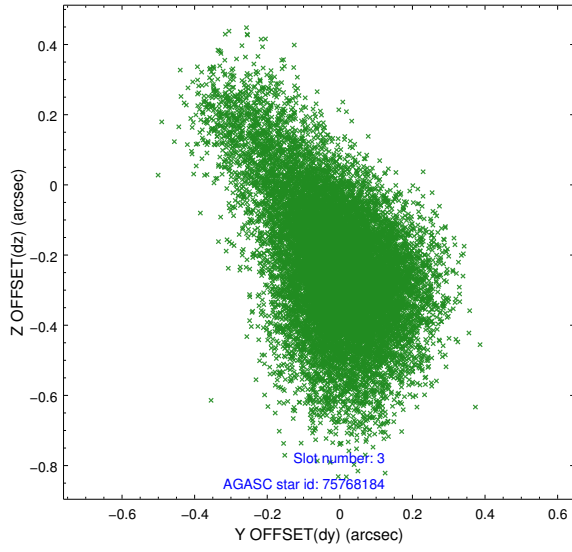


Slot Statistics

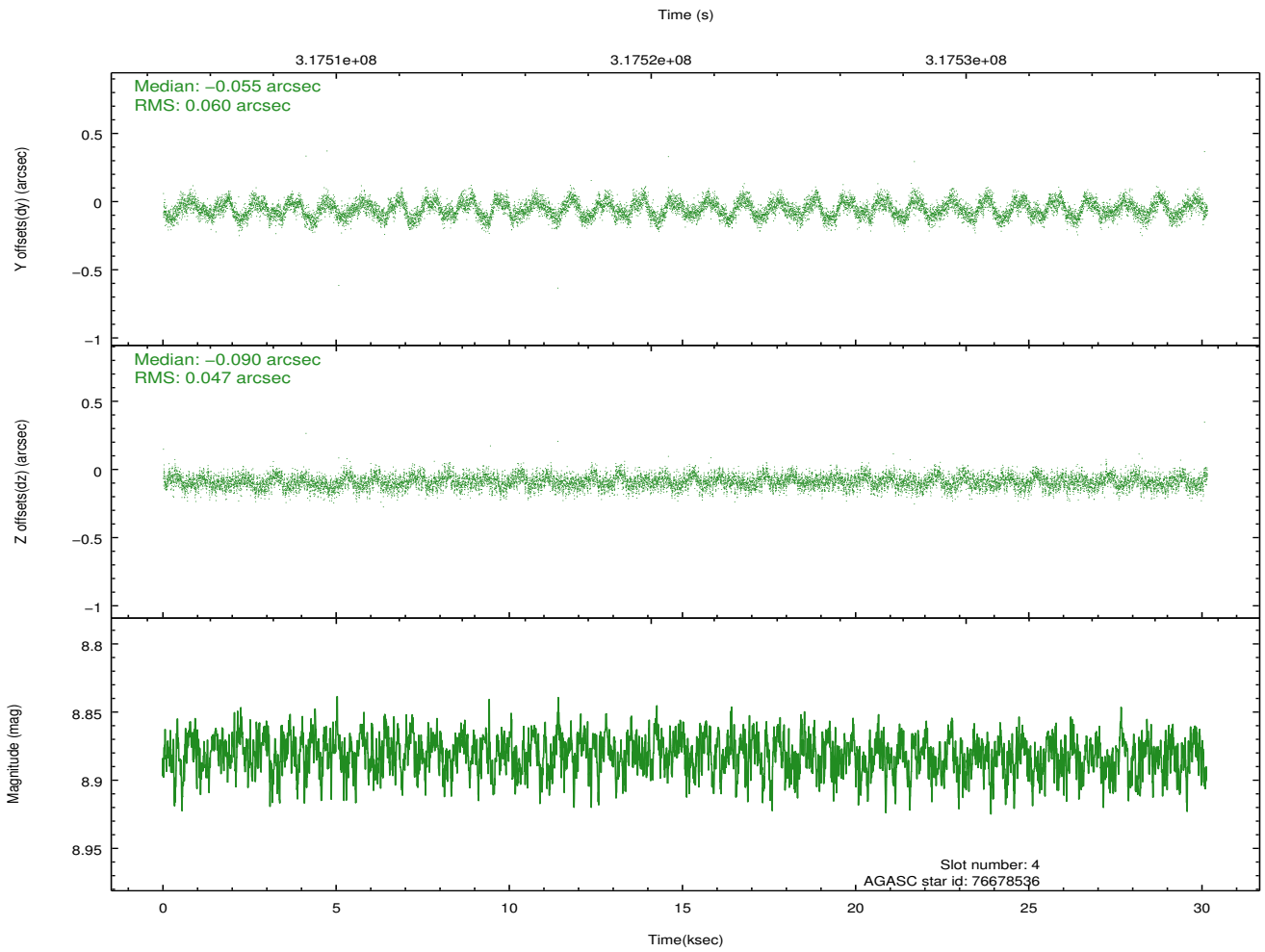
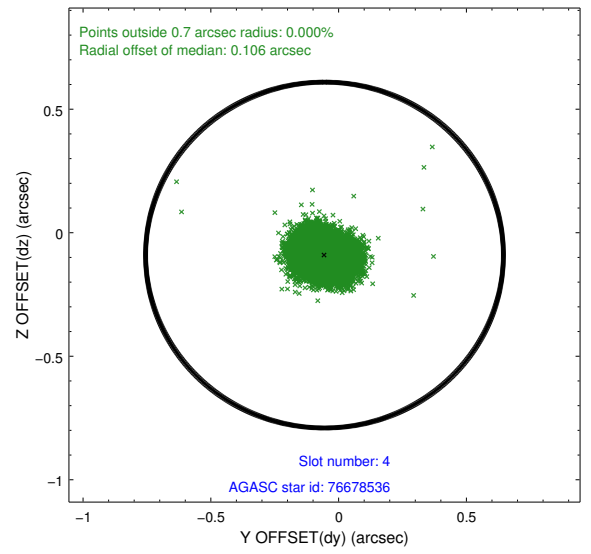
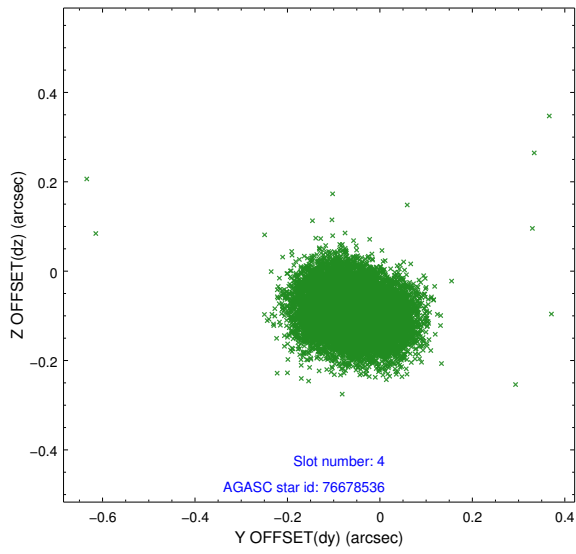
slot	status	id	mag	n_pts	med_dy	med_dz	dr1	dr2	ra	dec	mean_y	mean_z
0	FID	ACIS-S-2	7.09	7350	-0.077	-0.036	0.026	0.036	0.000000	0.000000	-767.62	-1737.67
1	FID	ACIS-S-4	7.19	7351	0.189	0.048	0.013	0.025	0.000000	0.000000	2145.90	170.79
2	FID	ACIS-S-5	7.22	7352	-0.149	0.002	0.020	0.044	0.000000	0.000000	-1820.43	164.53
3	GUIDE	75768184	10.23	14664	-0.007	-0.240	0.216	0.434	352.363704	0.298036	-959.79	-1996.51
4	GUIDE	76678536	8.88	14698	-0.055	-0.090	0.082	0.128	353.237558	0.180446	792.49	650.13
5	GUIDE	76683080	9.87	14671	0.086	0.152	0.178	0.275	353.475595	0.556305	-51.63	2011.45
6	GUIDE	76685264	9.67	14672	0.027	0.123	0.142	0.237	353.301878	0.237362	709.02	948.19
7	GUIDE	688265896	9.15	14680	-0.044	0.027	0.097	0.155	352.587516	-0.177872	933.33	-2018.09

2.4 Star Slots

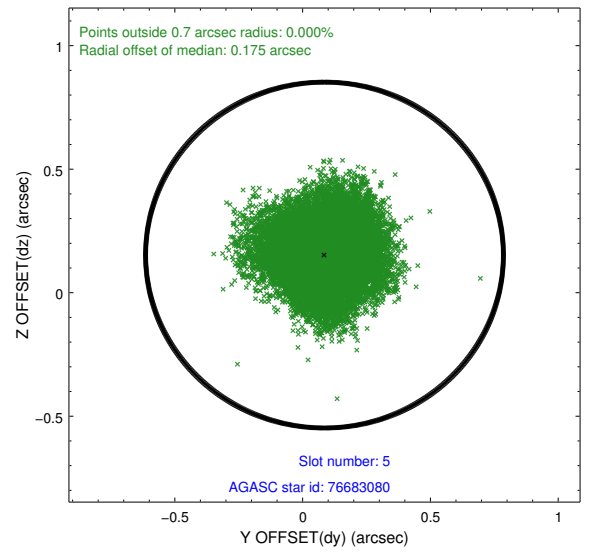
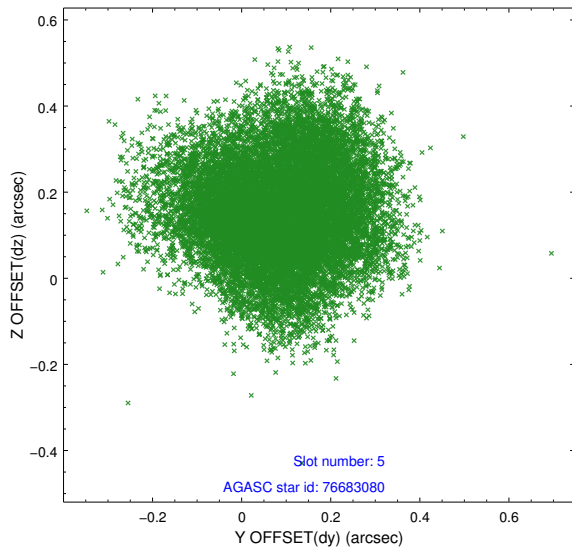
2.4.1 Slot 3



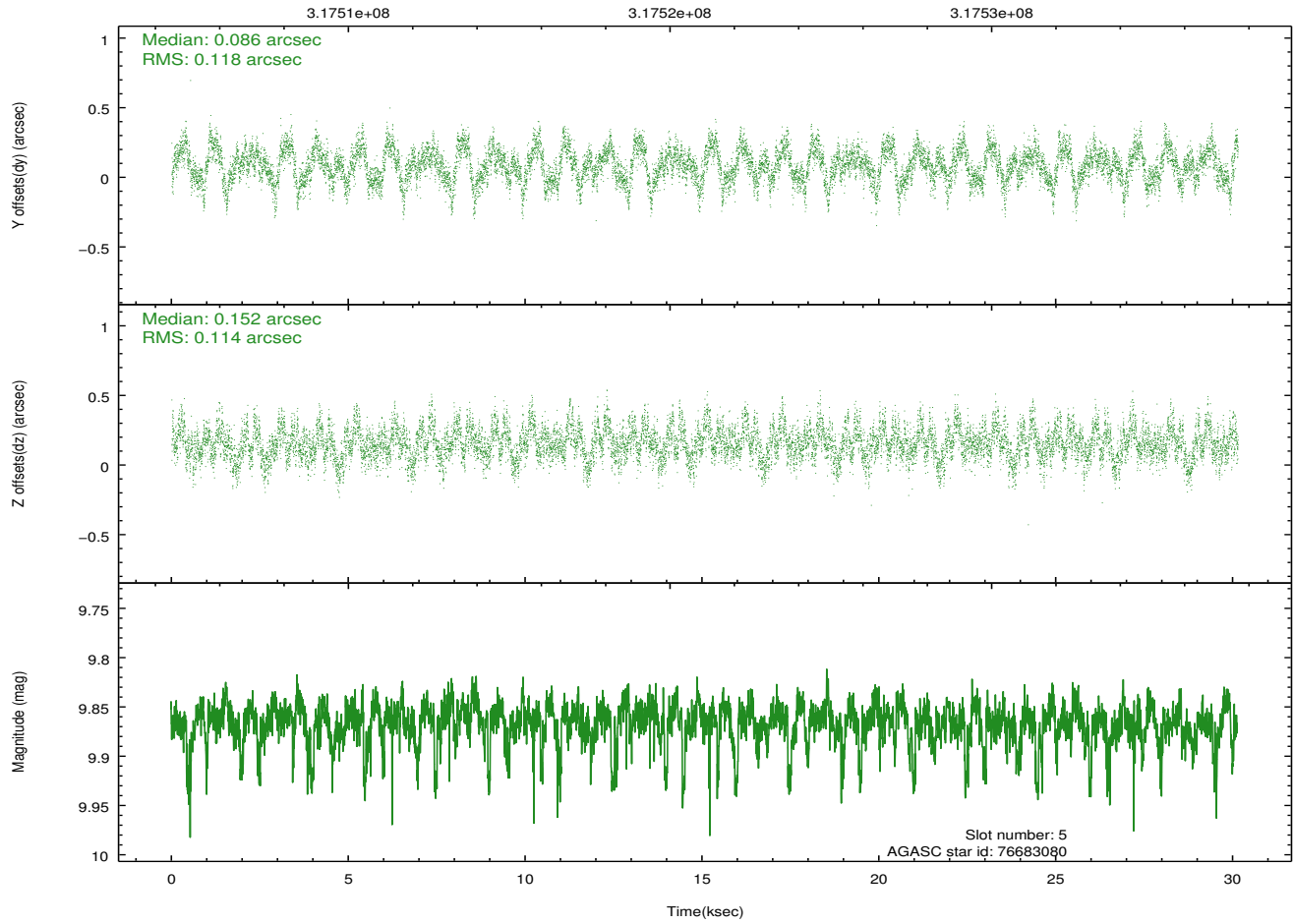
2.4.2 Slot 4



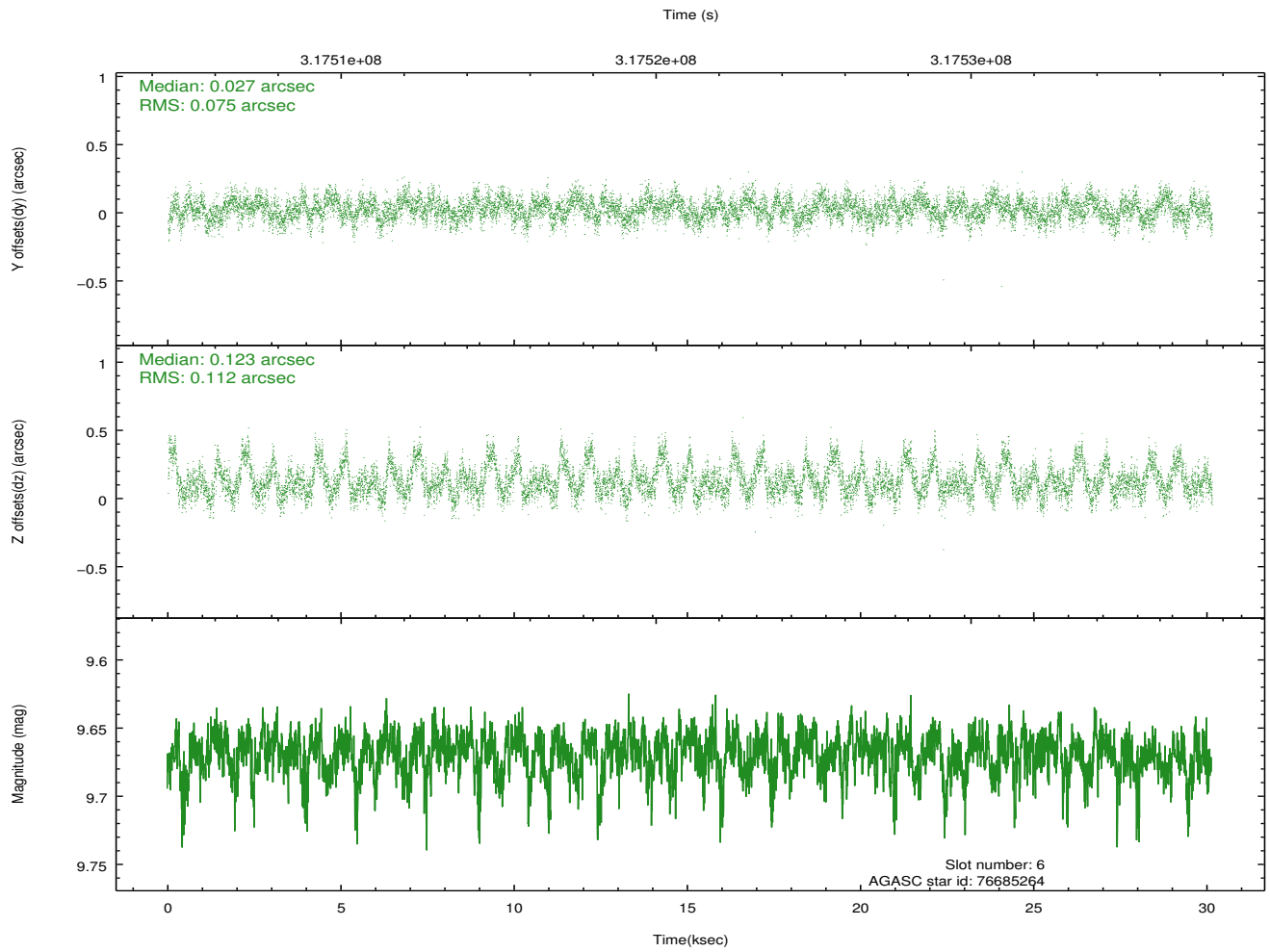
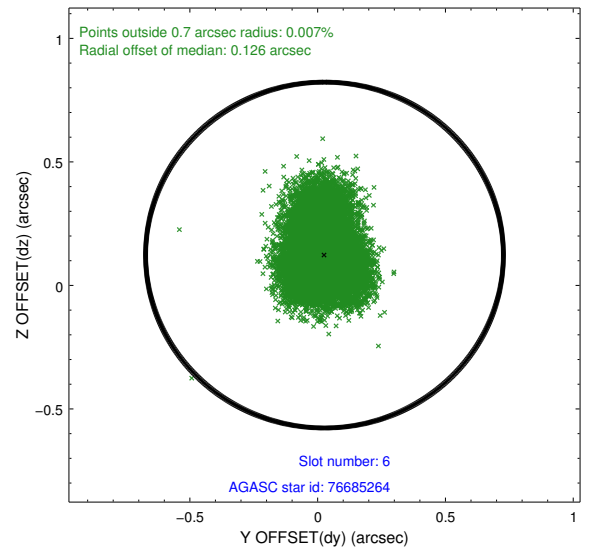
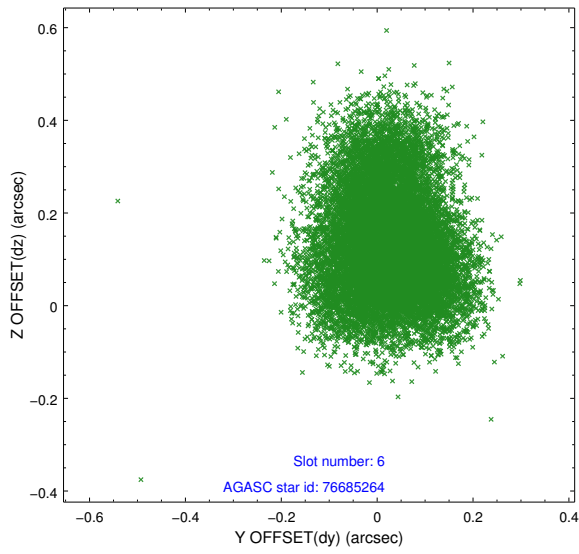
2.4.3 Slot 5



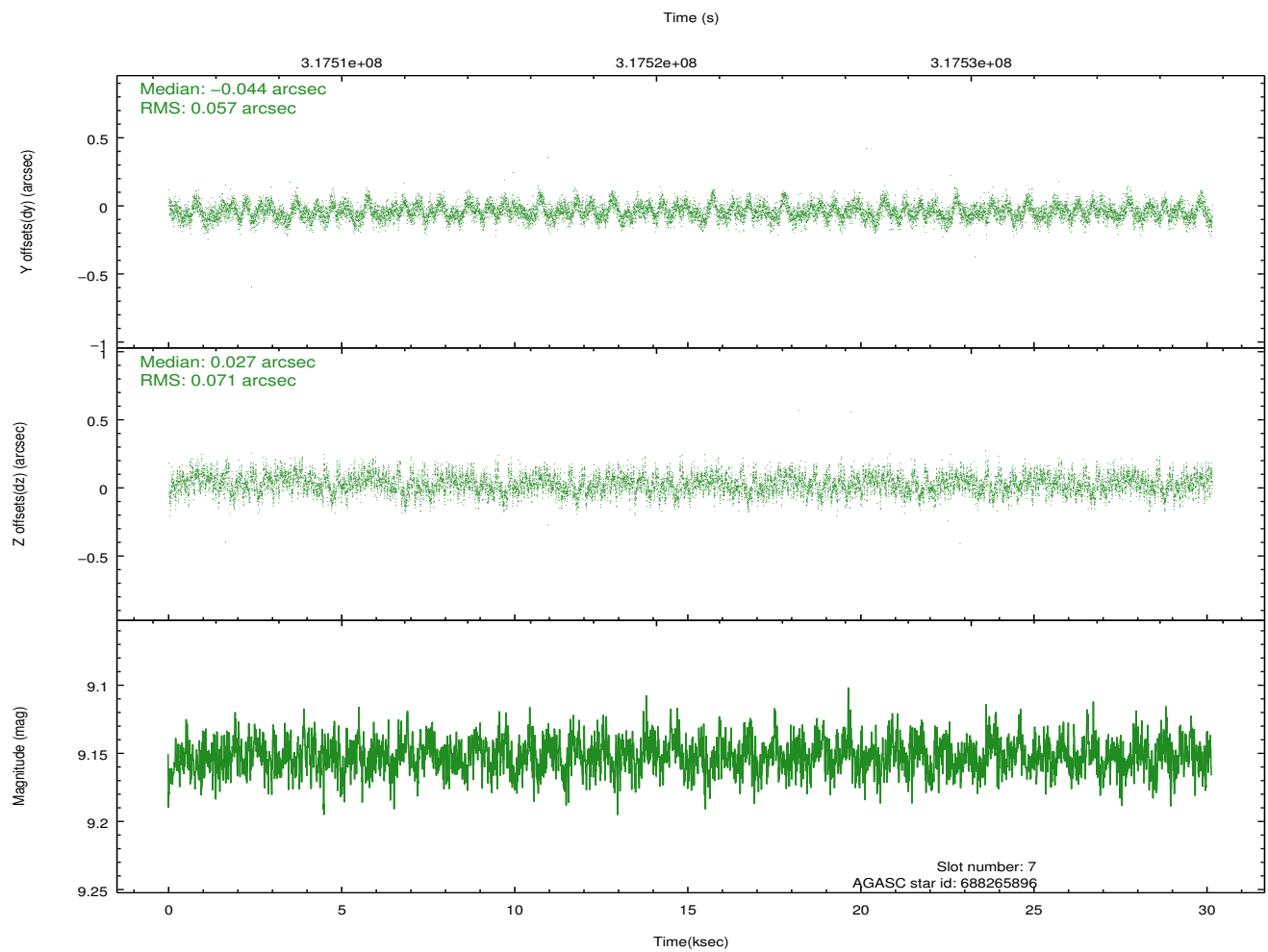
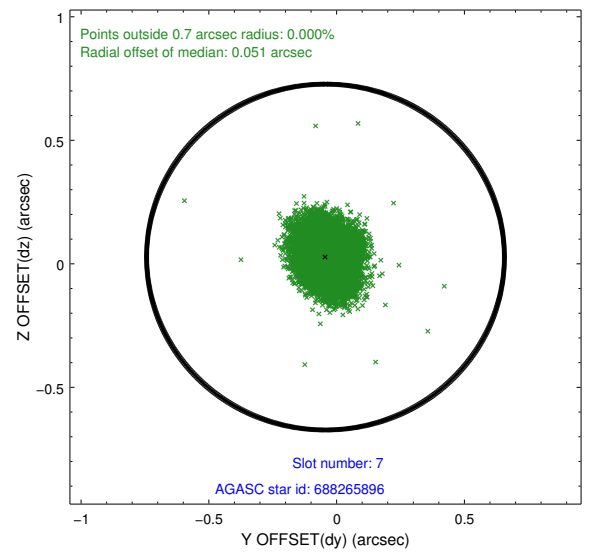
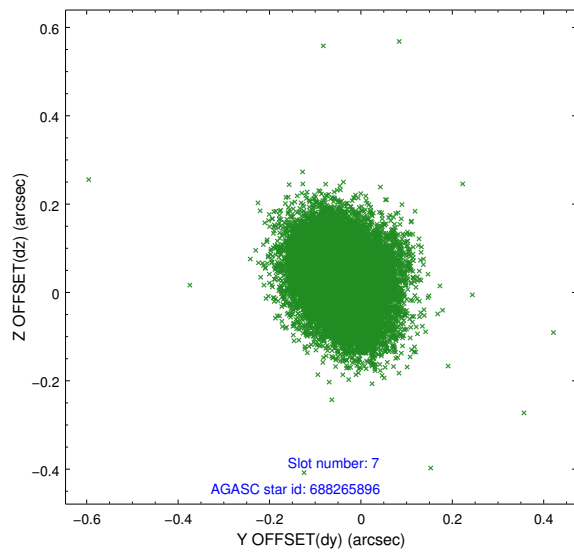
Time (s)



2.4.4 Slot 6

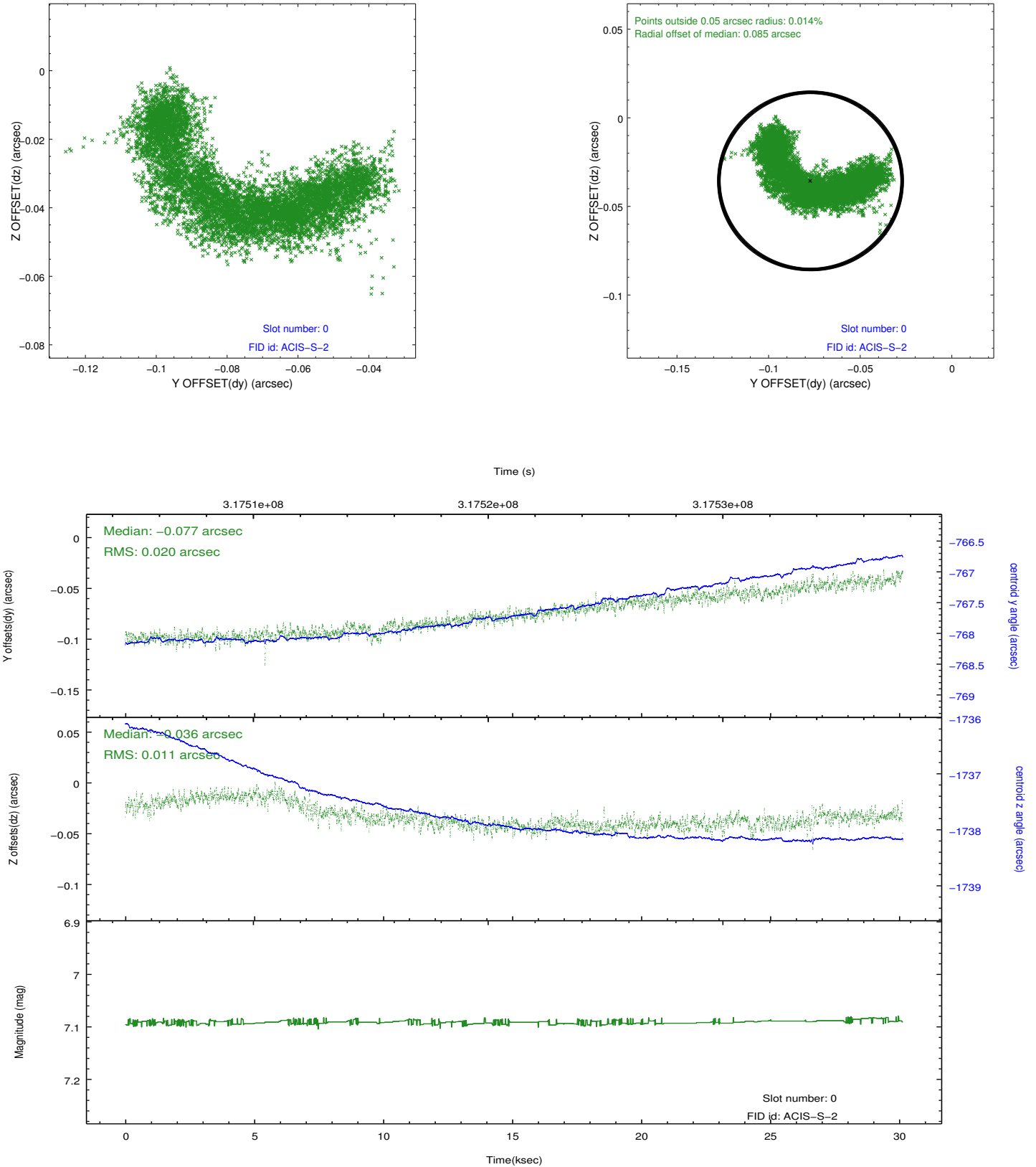


2.4.5 Slot 7

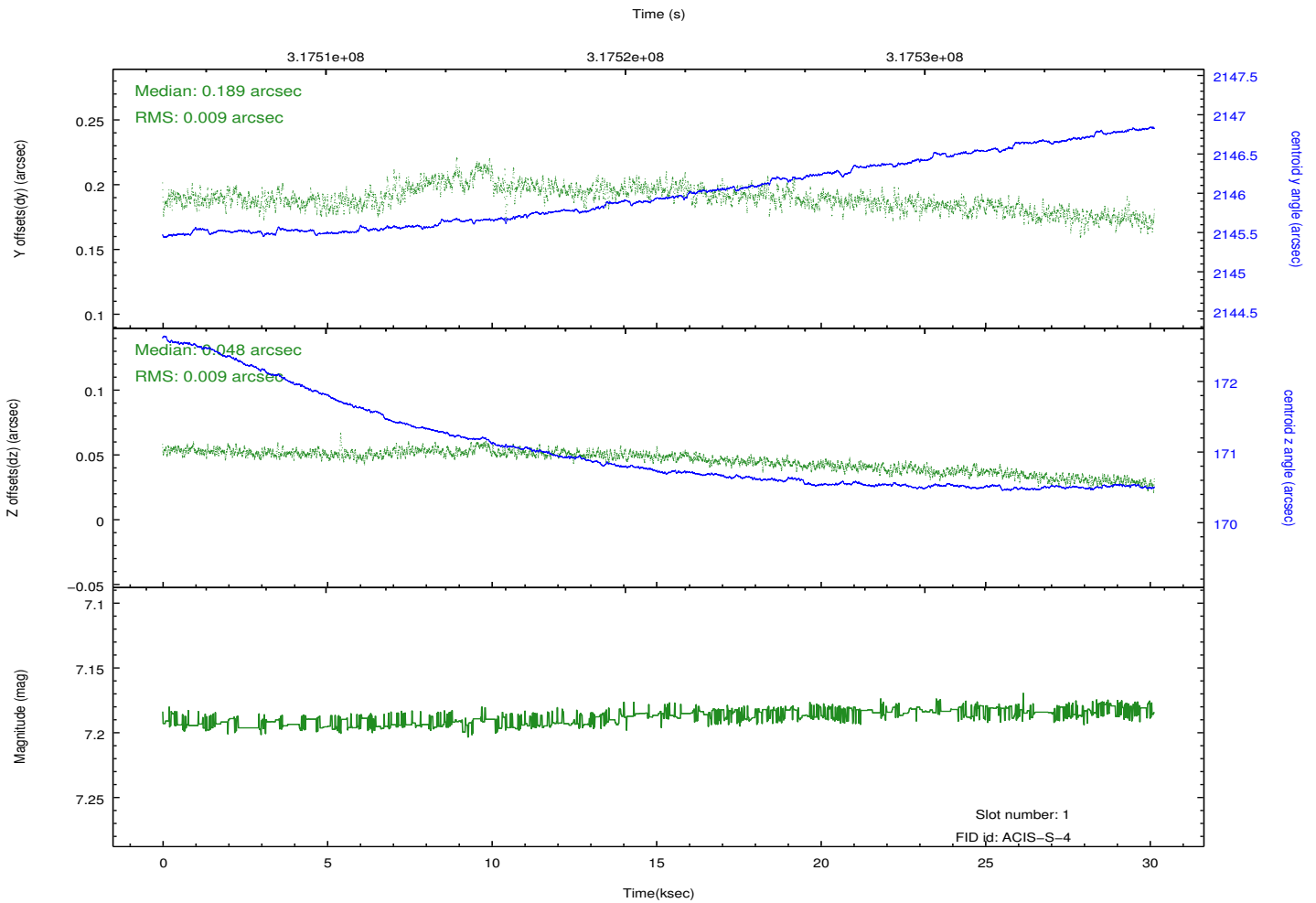
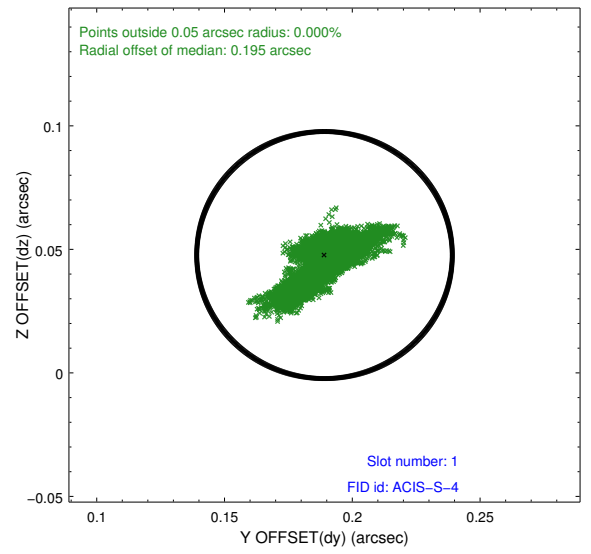
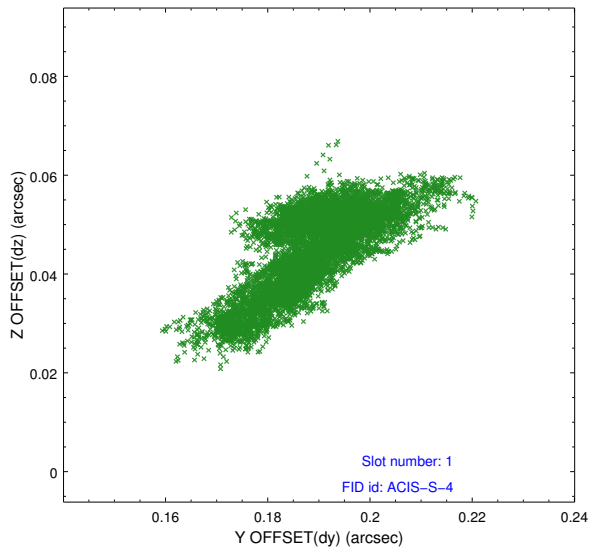


2.5 FID Slots

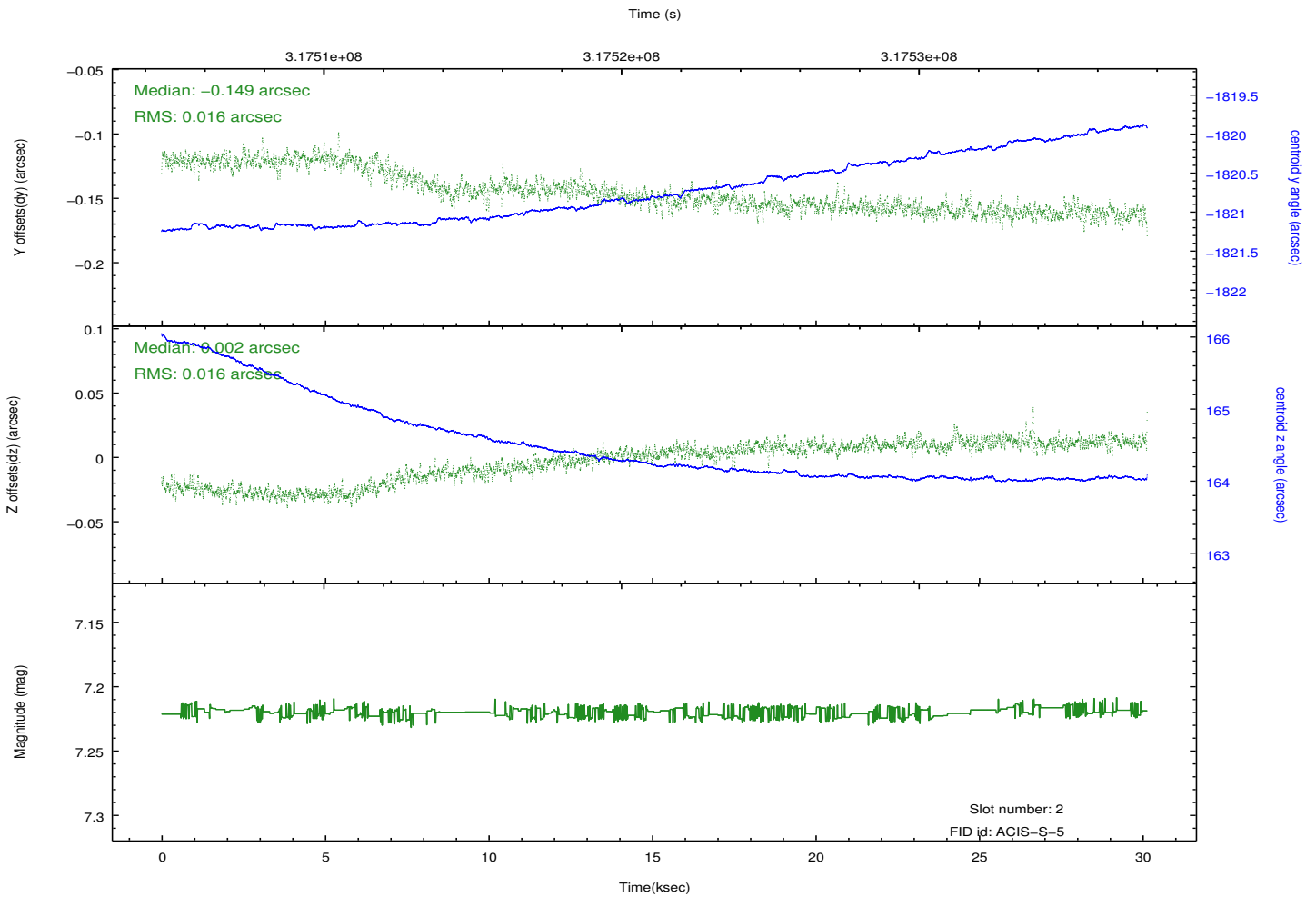
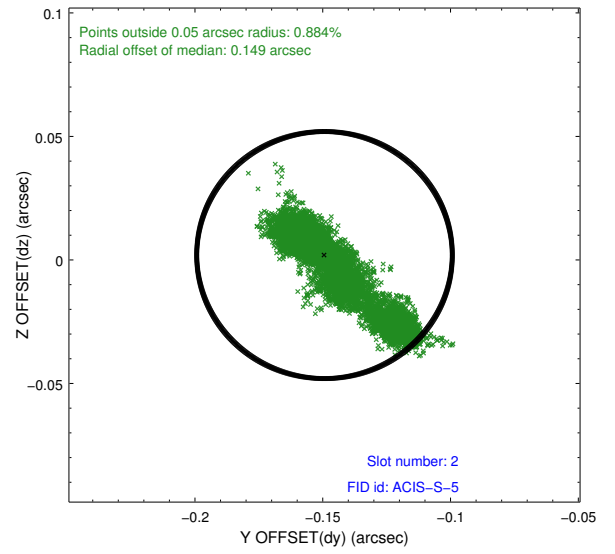
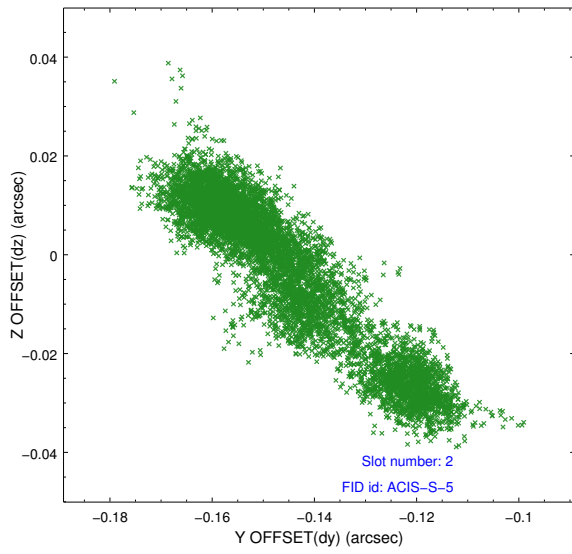
2.5.1 Slot 0



2.5.2 Slot 1



2.5.3 Slot 2



A Summary

A.1 Status

V&V Scientist	Jen Lauer
V&V Date (YYYY-MM-DD)	2012.05.10
V&V Edition	1
V&V Disposition and Status	OK
V&V Charge Time	30.1343998

A.2 Comments