

V&V Reference Report

L2 ASCDS Version : 8.4.5

Observation 788 - L2 Version 4
Chandra X-Ray Center

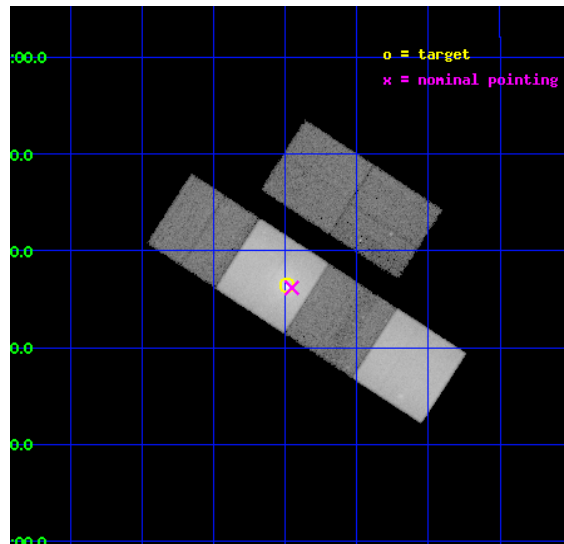
L2 Processing Date : Aug 28 2012

Contents

1	Front	2
2	OBI	3
2.1	OBI	3
2.1.1	Images	3
2.1.2	Bias	3
2.1.3	Parameters	4
2.1.4	Events	4
2.2	Compared Parameters	5
2.3	Aspect	6
2.4	Star Slots	9
2.4.1	Slot 3	9
2.4.2	Slot 4	10
2.4.3	Slot 5	11
2.4.4	Slot 6	12
2.4.5	Slot 7	13
2.5	FID Slots	14
2.5.1	Slot 0	14
2.5.2	Slot 1	15
2.5.3	Slot 2	16
A	Summary	17
A.1	Status	17
A.2	Comments	17

1 Front

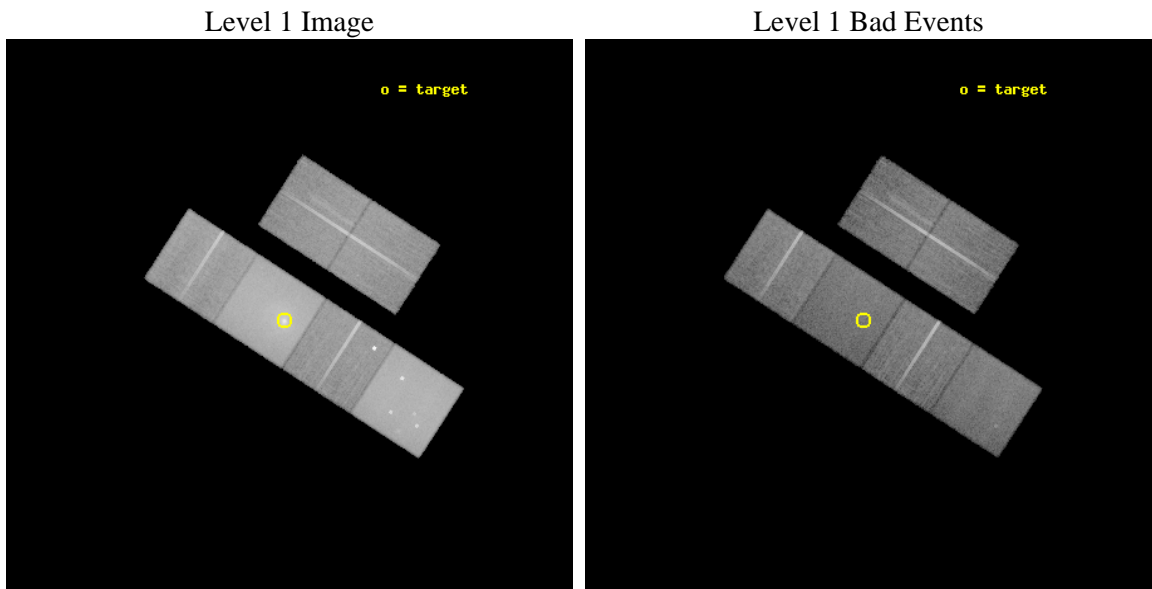
seq_num	600091	Sequence number
obs_id	788	Observation id
title	THE NATURE OF PECULIAR GAS FILAMENTS IN EARLY TYPE GALAXIES	Propos
observer	Dr. Ginevra Trinchieri	Principal investigator
object	NGC 5846	Source name
dtcycle	0	
cycle	P	events from which exps? Prim/Second/Both
ra_targ	226.6225	Observer's specified target RA [deg]
dec_targ	1.606944	Observer's specified target Dec [deg]
ra_nom	226.61326067489	Nominal RA [deg]
dec_nom	1.6031448587457	Nominal Dec [deg]
roll_nom	212.85761866021	Nominal Roll [deg]
revision	4	Processing version of data
ontime	30246.400028154	Sum of GTIs [s]
livetime	29863.401898802	Livetime [s]
ontime2	30246.400028154	Sum of GTIs [s]
ontime3	30246.400028154	Sum of GTIs [s]
ontime5	30246.400028154	Sum of GTIs [s]
ontime6	30246.400028154	Sum of GTIs [s]
ontime7	30246.400028154	Sum of GTIs [s]
ontime8	30243.159067914	Sum of GTIs [s]
l2events	722408	Number of level 2 events



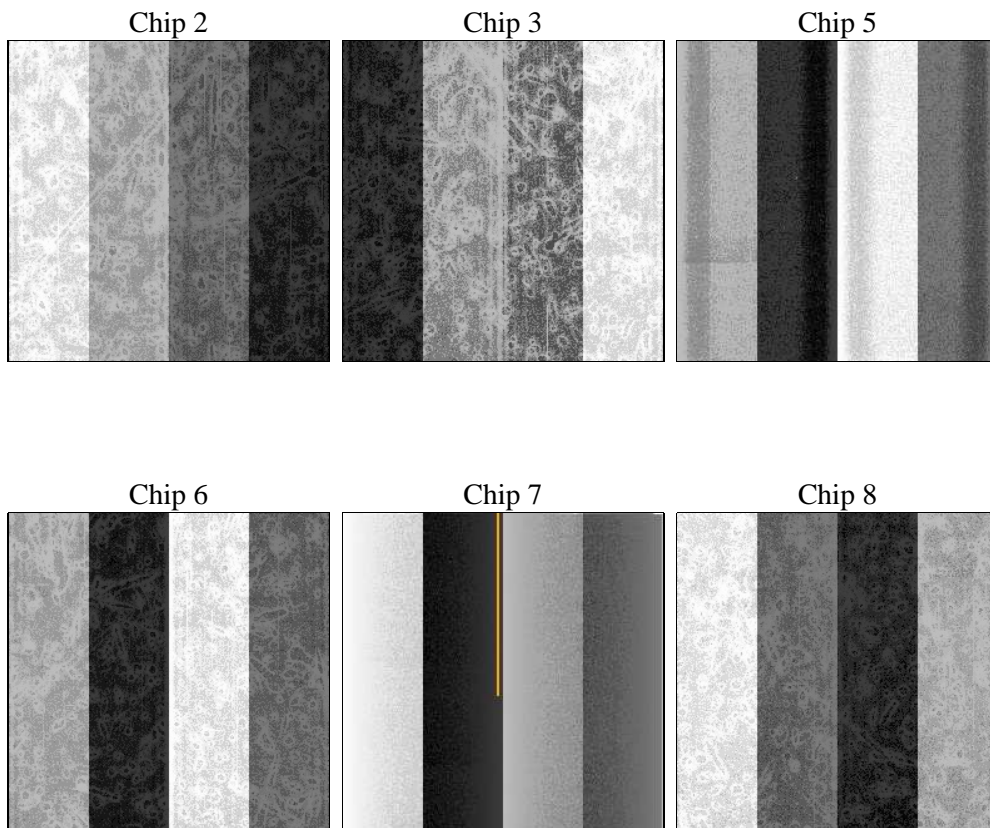
2 OBI

2.1 OBI

2.1.1 Images



2.1.2 Bias



2.1.3 Parameters

obi_num	0	Obi number	sched_exp_time	30061.624000	[s] Scheduled observation exposure time
ascdsver	8.4.5	Processing system revision	ontime	30246.400028154	Sum of GTIs [s]
caldbver	4.5.1.1	 	ontime2	30246.400028154	Sum of GTIs [s]
date	2012-08-28T06:17:35	Date and time of file creation	ontime3	30246.400028154	Sum of GTIs [s]
revision	4	Processing version of data	ontime5	30246.400028154	Sum of GTIs [s]
			ontime6	30246.400028154	Sum of GTIs [s]
			ontime7	30246.400028154	Sum of GTIs [s]
			ontime8	30243.159067914	Sum of GTIs [s]
			l1events	1762985	Number of level 1 events

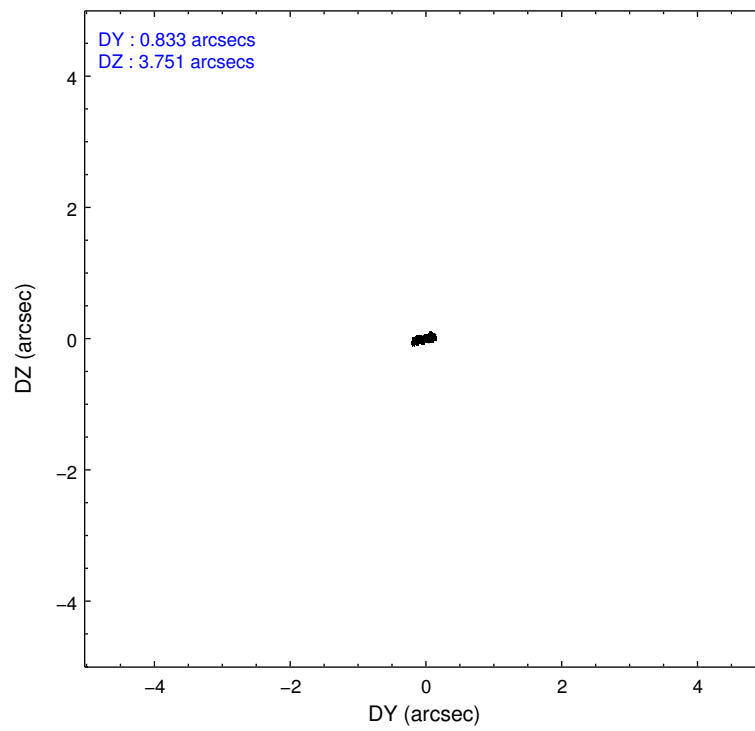
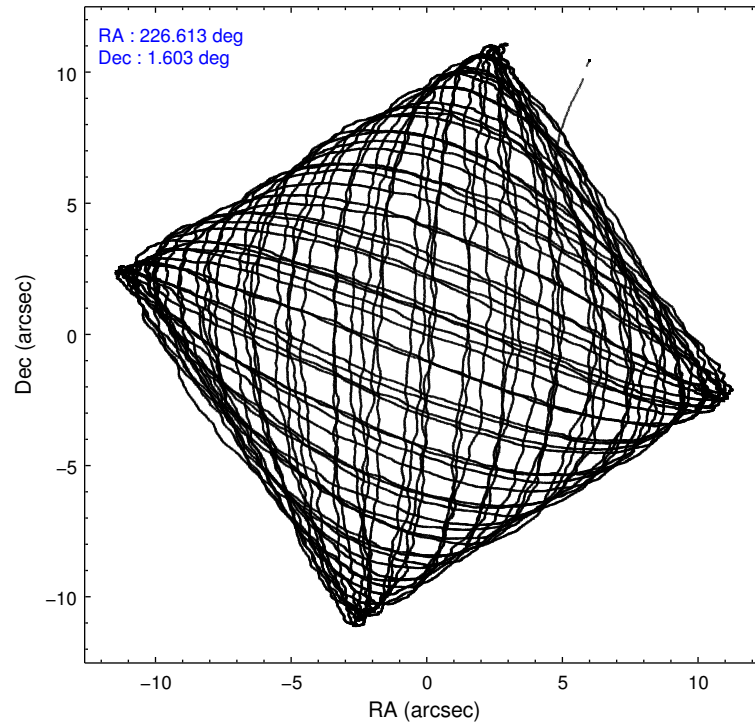
2.1.4 Events

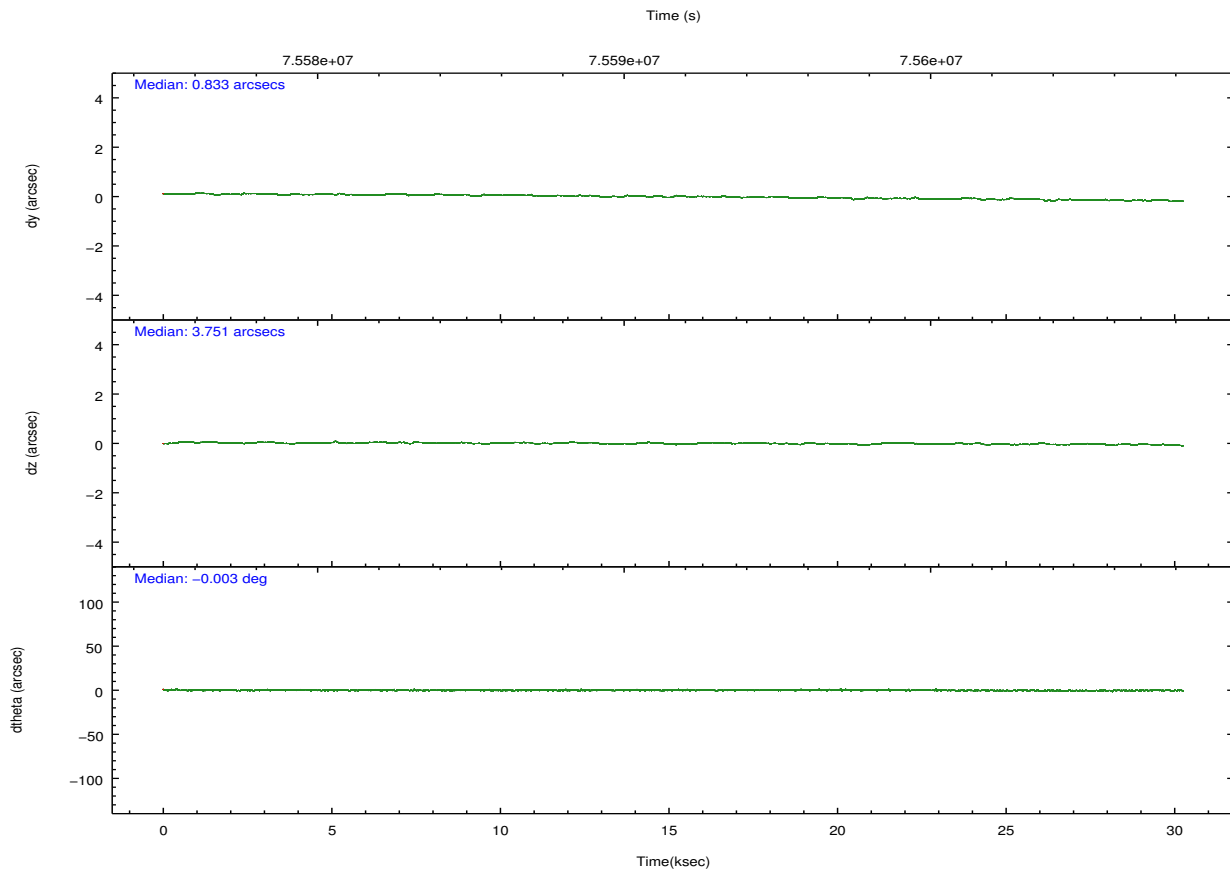
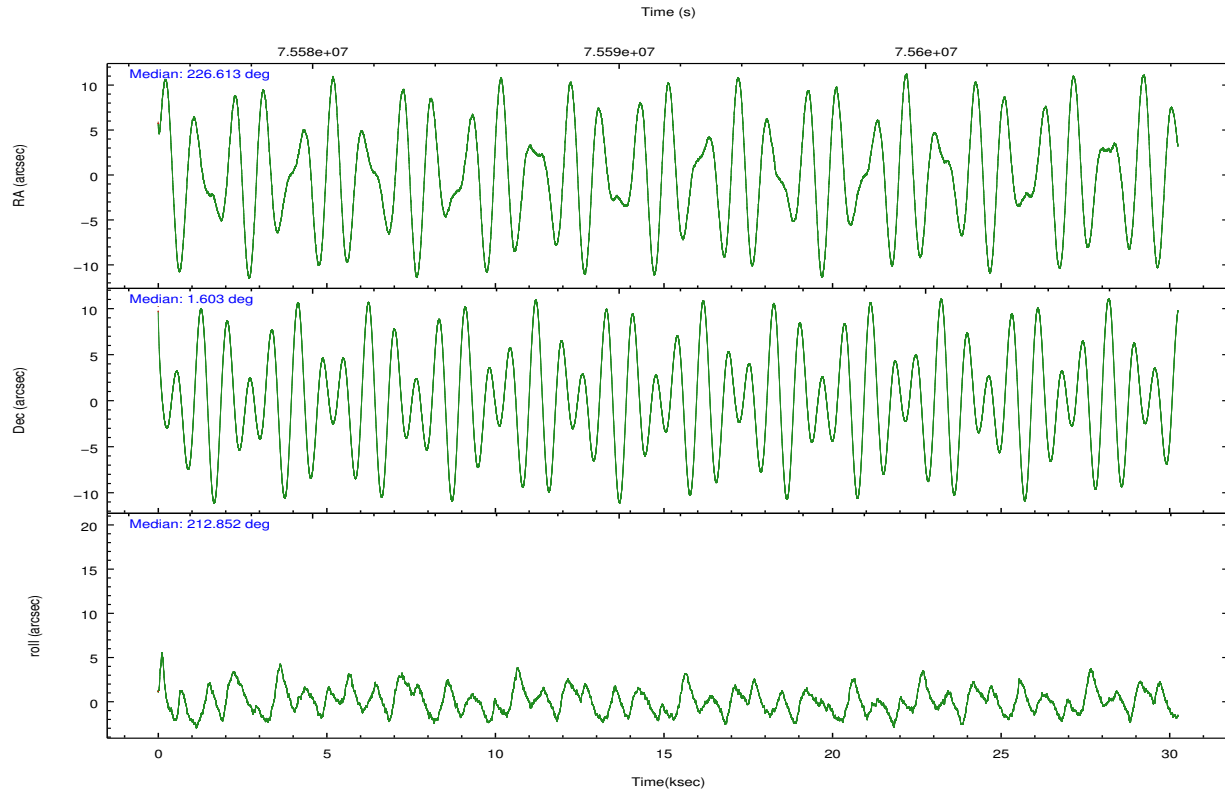
	ccd 2	ccd 3	ccd 5	ccd 6	ccd 7	ccd 8		ccd 2	ccd 3	ccd 5	ccd 6	ccd 7	ccd 8
level 1 events	205585	198340	430818	216477	461538	250227	grade 0 events	17760	19303	54857	31516	53472	27221
rejected events	173973	165374	145310	170059	133014	189273		8%	9%	12%	14%	11%	10%
rejected %	84%	83%	33%	78%	28%	75%	grade 1 events	125	128	586	169	218	186
								0%	0%	0%	0%	0%	0%
							grade 2 events	5644	5234	78012	5837	66856	11448
								2%	2%	18%	2%	14%	4%
							grade 3 events	2366	2382	17601	2489	30319	5309
								1%	1%	4%	1%	6%	2%
							grade 4 events	2299	2325	17407	2515	29746	5033
								1%	1%	4%	1%	6%	2%
							grade 5 events	5911	6413	20590	7169	22770	9100
								2%	3%	4%	3%	4%	3%
							grade 6 events	3866	4045	119552	4583	149746	12616
								1%	2%	27%	2%	32%	5%
							grade 7 events	167614	158510	122213	162199	108411	179314
								81%	79%	28%	74%	23%	71%

2.2 Compared Parameters

Parameter	Planned	Actual	Parameter	Planned	Actual
Instrument	ACIS	ACIS	Obspar format version number	7	7
Detector	ACIS-235678	ACIS-235678	Obspar file type	PREDICTED	ACTUAL
Grating	NONE	NONE	Obspar update status	NONE	UPDATED
Data mode	FAINT	FAINT	Number of optional ACIS chips dropped	0	0
Observation mode	POINTING	POINTING	On-chip summing requested	N	N
[deg] Pointing RA	226.625673	226.6132606748906	Subarray requested	NONE	NONE
[deg] Pointing Dec	1.627595	1.603144858745683	Alternating exposures requested	N	N
[deg] Pointing Roll	212.700637	212.8576186602109	[s] Primary exposure time	0.000000	3.2
[mm] SIM focus pos	-0.684267	-0.6828225247311905			
[mm] SIM defocus	0	0.001444936568705701			
[mm] SIM translation stage pos	-190.132523	-190.1425803651734			
[mm] SIM translation stage offset	0	0.01005778216563158			
[s] Observation start time (MET)	75576660.184000	75575286.67110001			
Observation start date	2000-05-24T17:29:56	2000-05-24T17:08:06			
[s] Observation end time (MET)	75606722.184000	75607031.43476599			
Observation end date	2000-05-25T01:50:58	2000-05-25T01:57:11			
Read mode	TIMED	TIMED			

2.3 Aspect



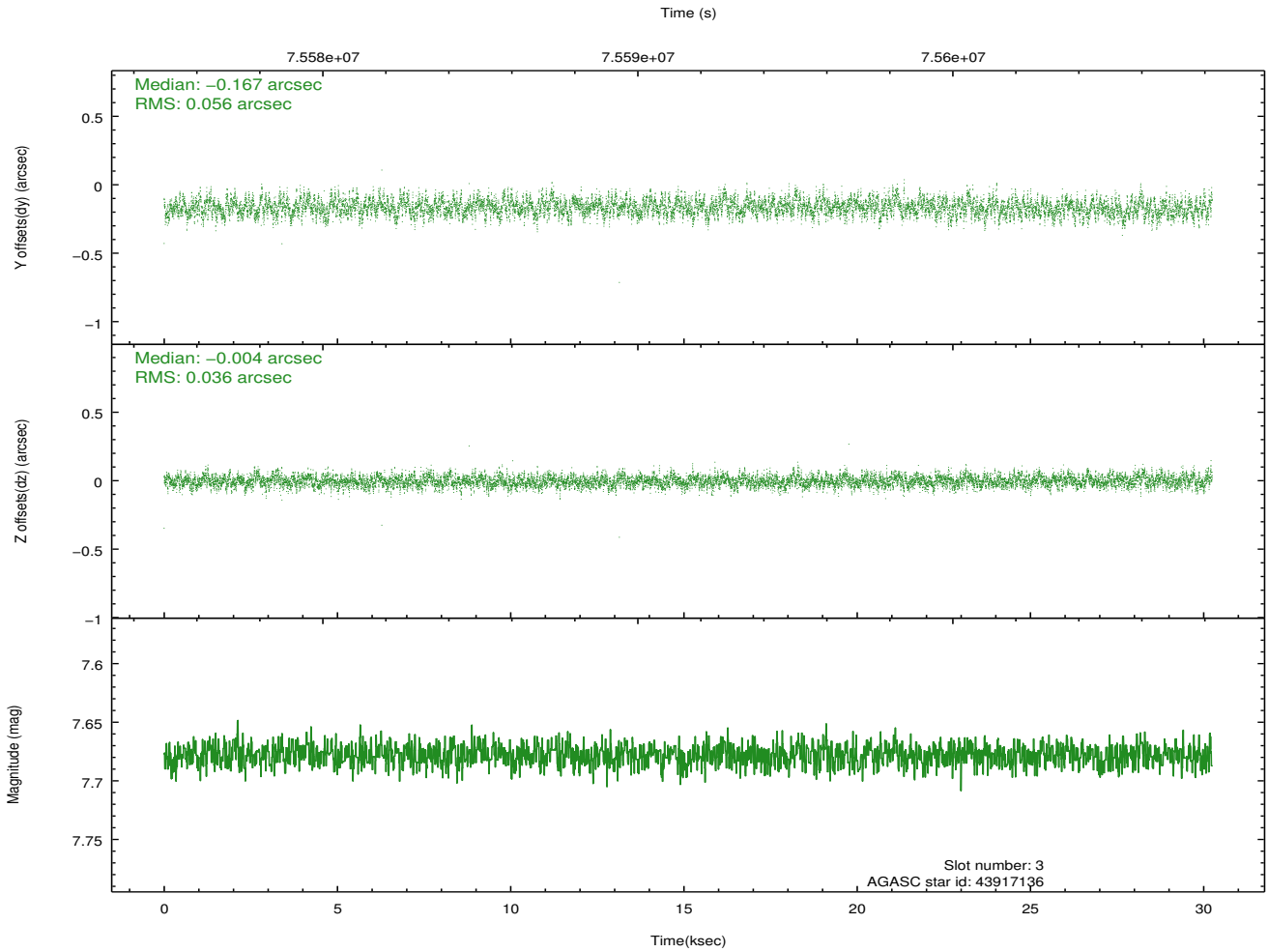
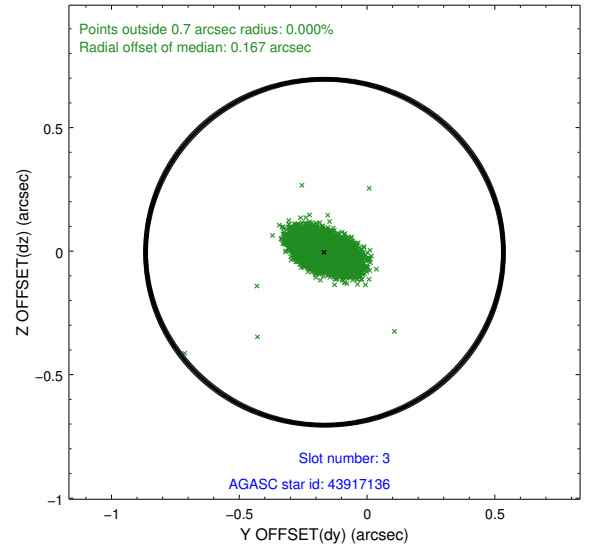
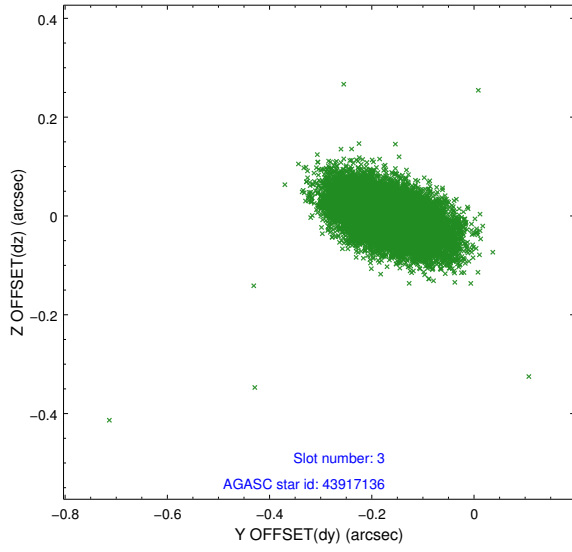


Slot Statistics

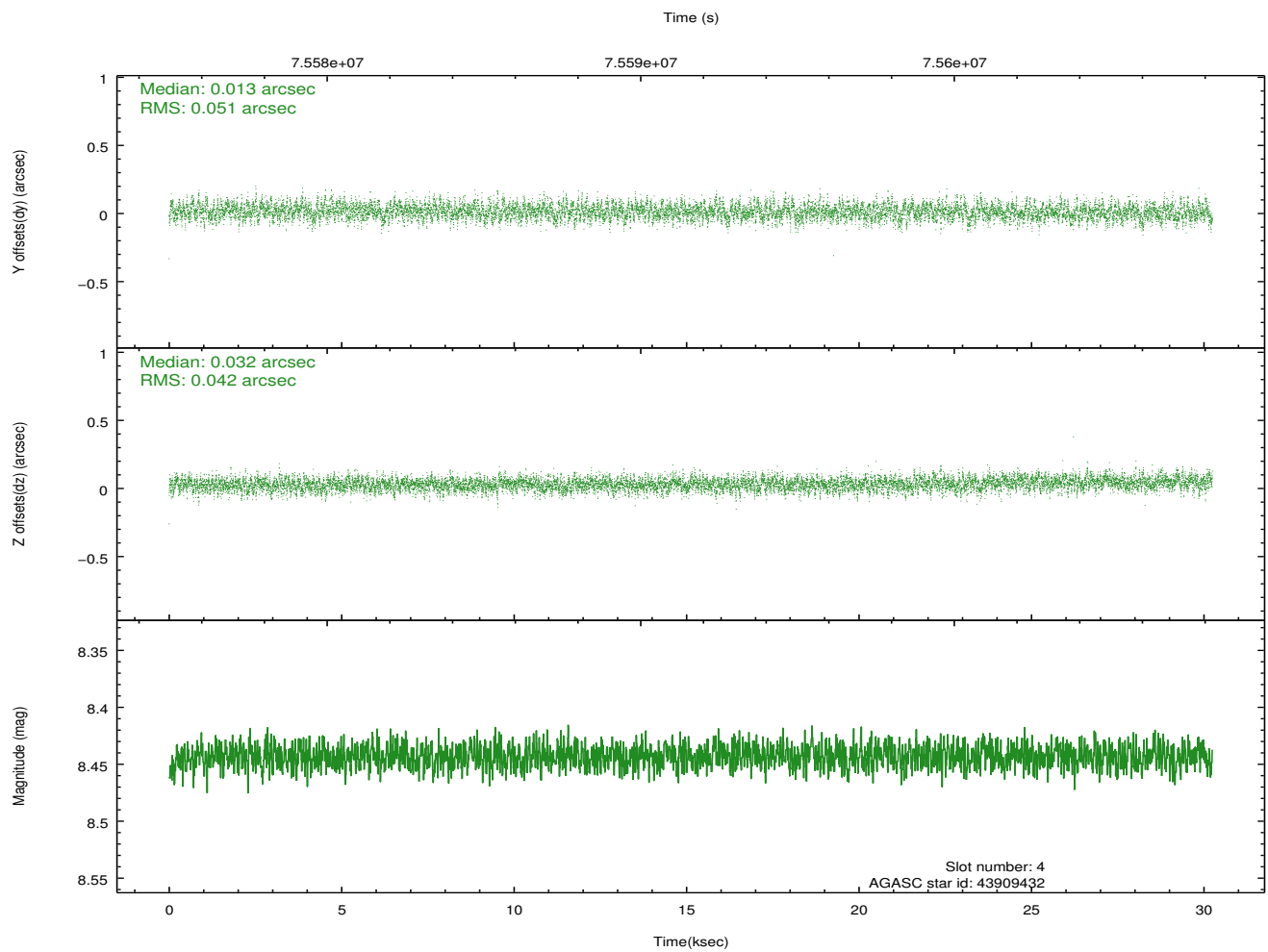
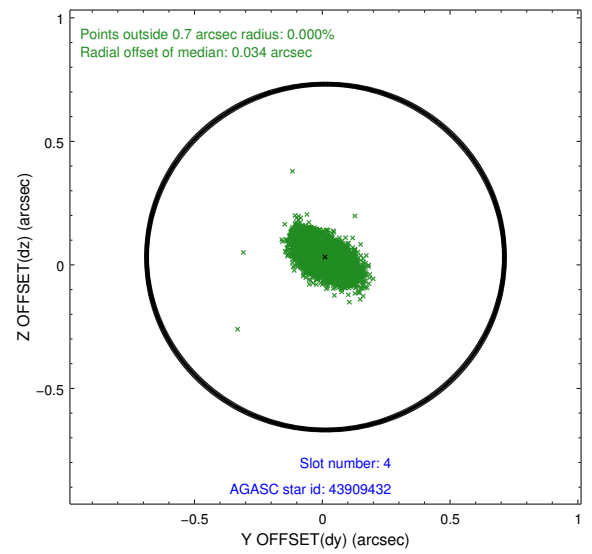
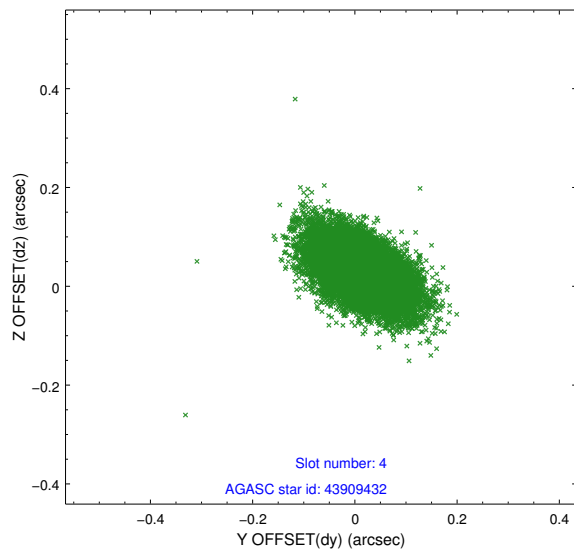
slot	status	id	mag	n_pts	med_dy	med_dz	dr1	dr2	ra	dec	mean_y	mean_z
0	FID	ACIS-S-2	7.11	7378	-0.010	-0.015	0.010	0.021	0.000000	0.000000	-753.45	-1724.77
1	FID	ACIS-S-4	7.21	7376	-0.003	0.009	0.010	0.039	0.000000	0.000000	2159.84	183.60
2	FID	ACIS-S-5	7.24	7378	-0.020	0.016	0.011	0.028	0.000000	0.000000	-1806.18	177.44
3	GUIDE	43917136	7.68	14755	-0.167	-0.004	0.069	0.120	227.238891	1.689288	-1976.19	1004.95
4	GUIDE	43909432	8.44	14753	0.013	0.032	0.068	0.117	227.032488	1.308525	-610.75	1757.69
5	GUIDE	43784968	9.97	14749	0.026	0.024	0.109	0.179	226.169476	1.766344	1112.70	-1306.93
6	GUIDE	43785336	9.32	14752	0.112	-0.004	0.102	0.169	226.723432	1.018553	889.59	2035.30
7	GUIDE	44302592	7.85	14755	0.020	-0.048	0.061	0.104	226.320439	2.016885	168.38	-1772.44

2.4 Star Slots

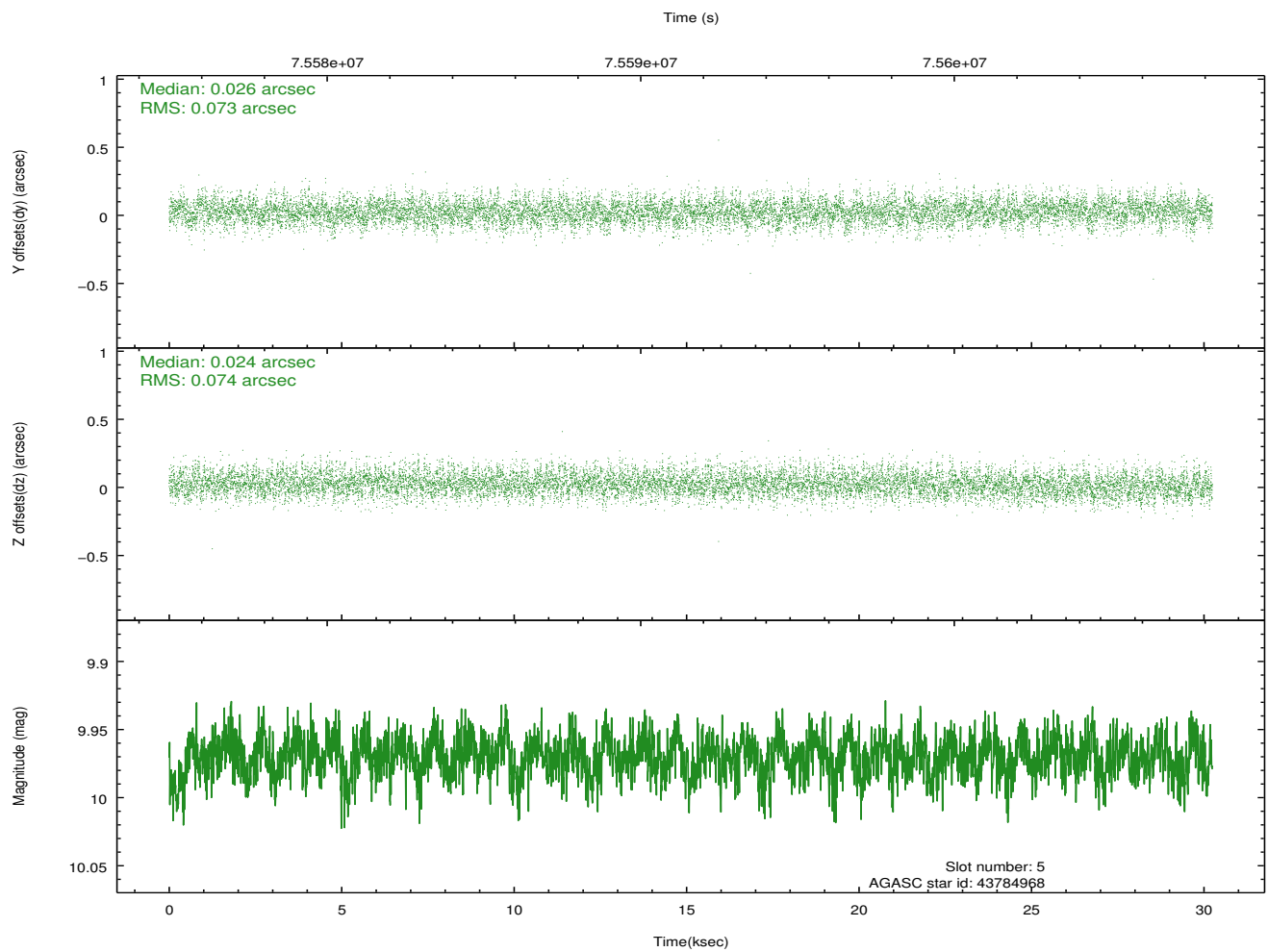
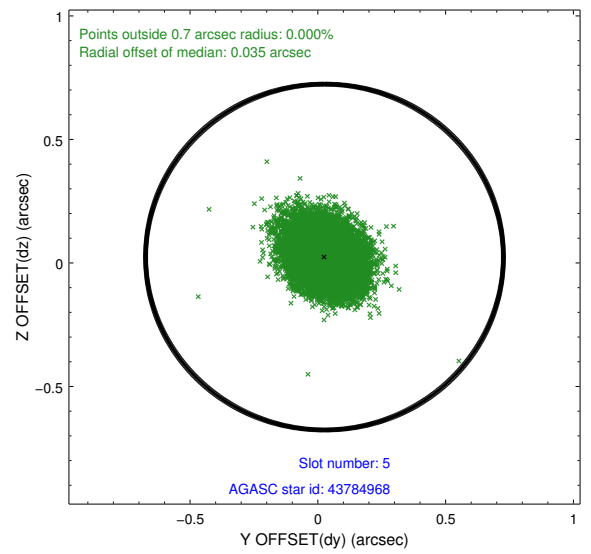
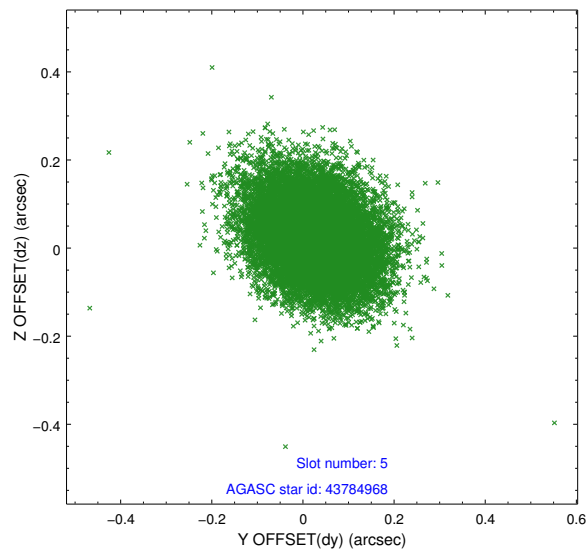
2.4.1 Slot 3



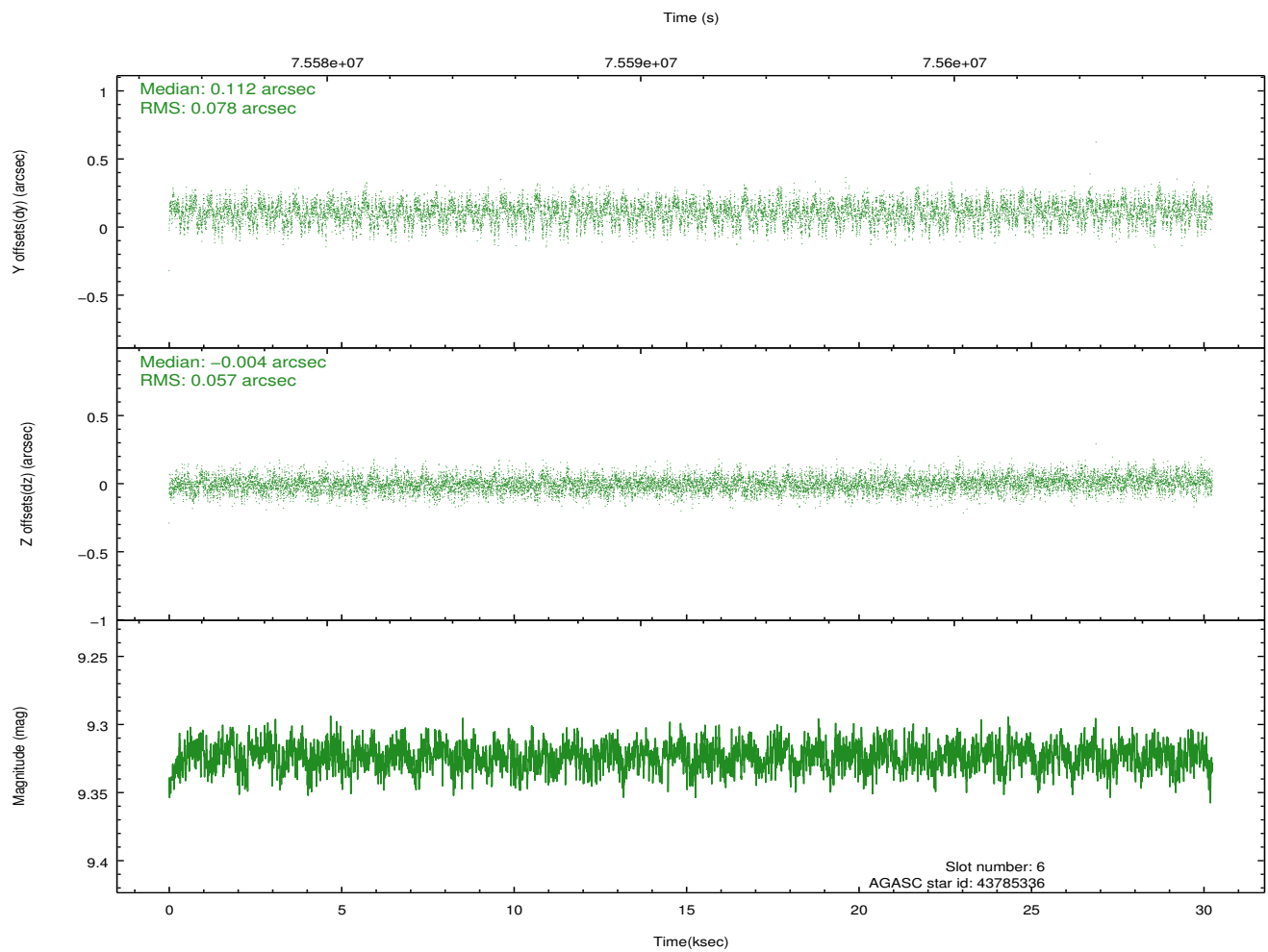
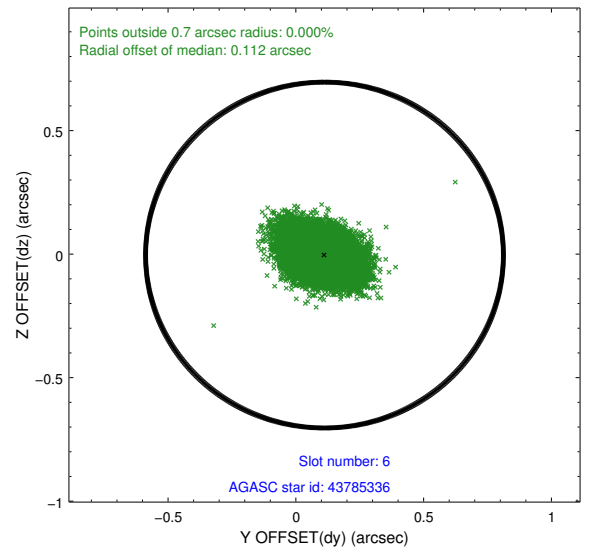
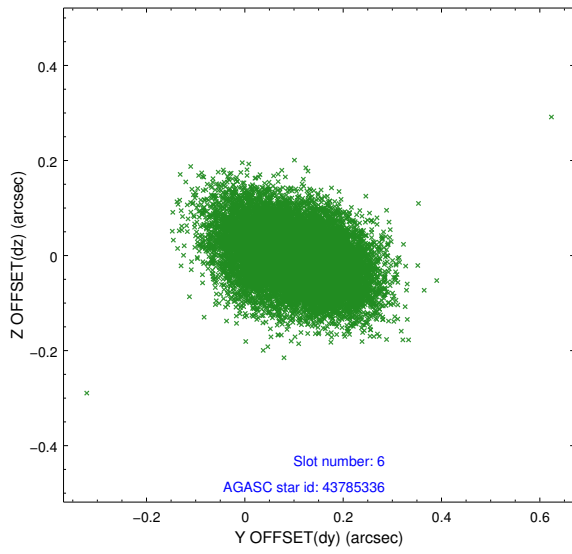
2.4.2 Slot 4



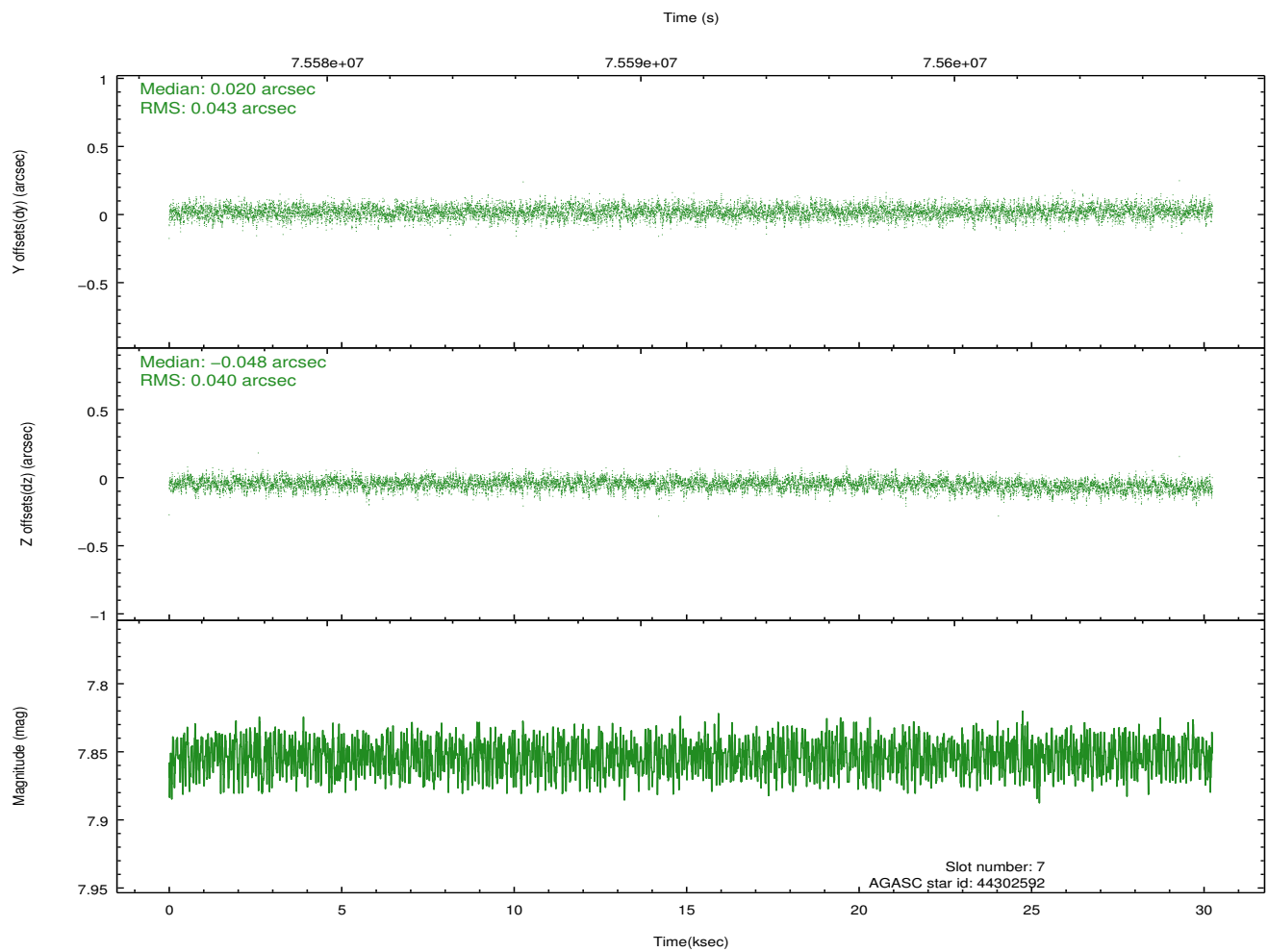
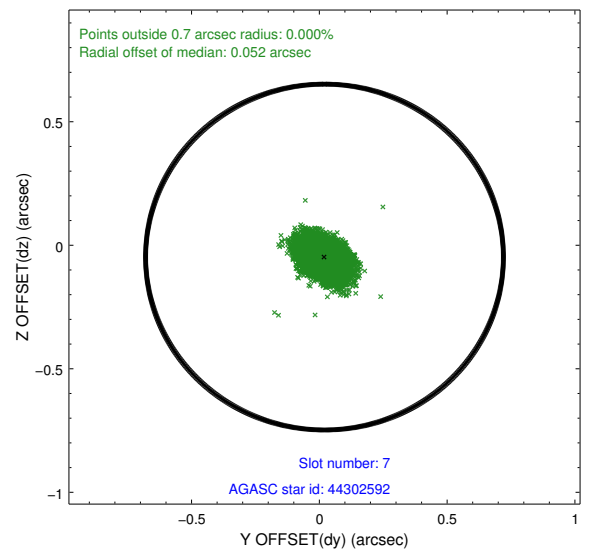
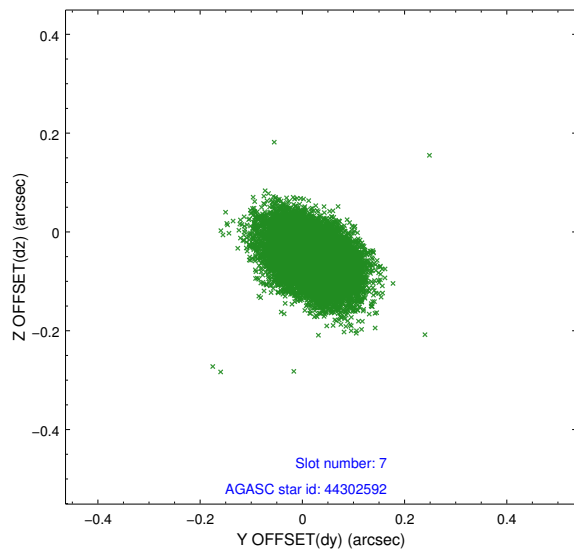
2.4.3 Slot 5



2.4.4 Slot 6

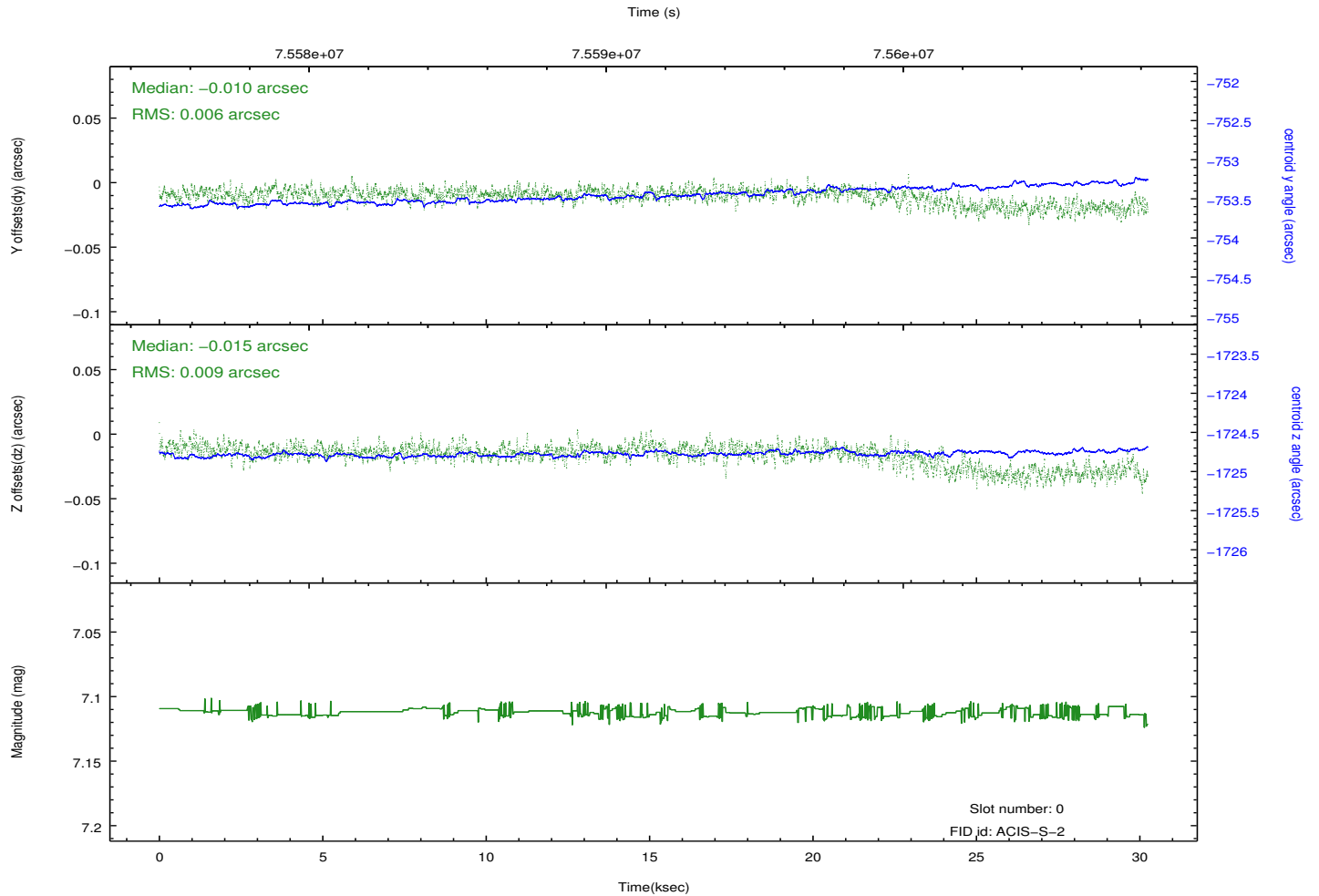
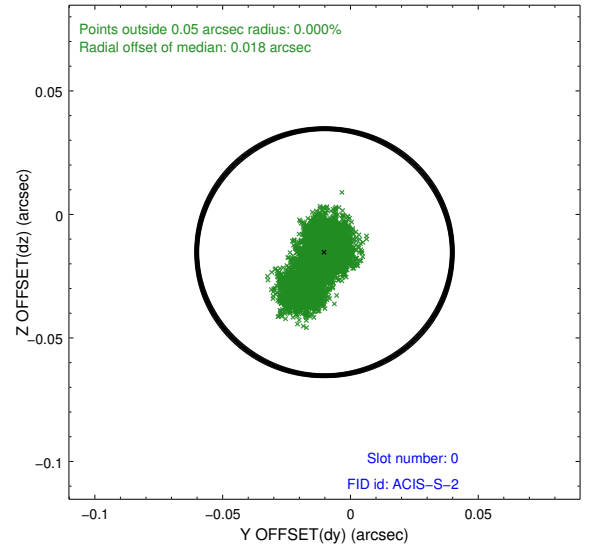
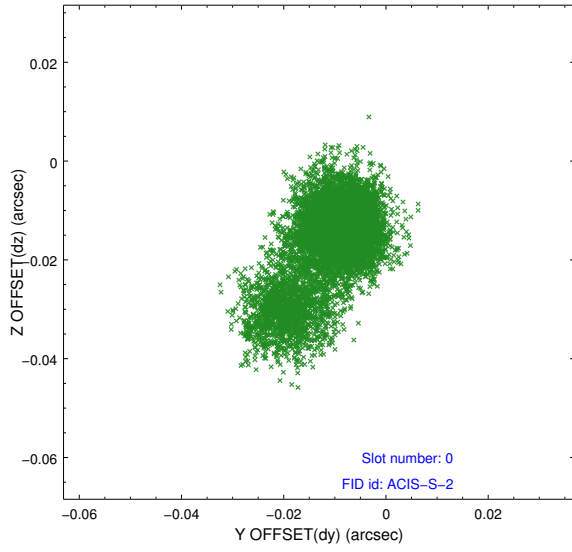


2.4.5 Slot 7

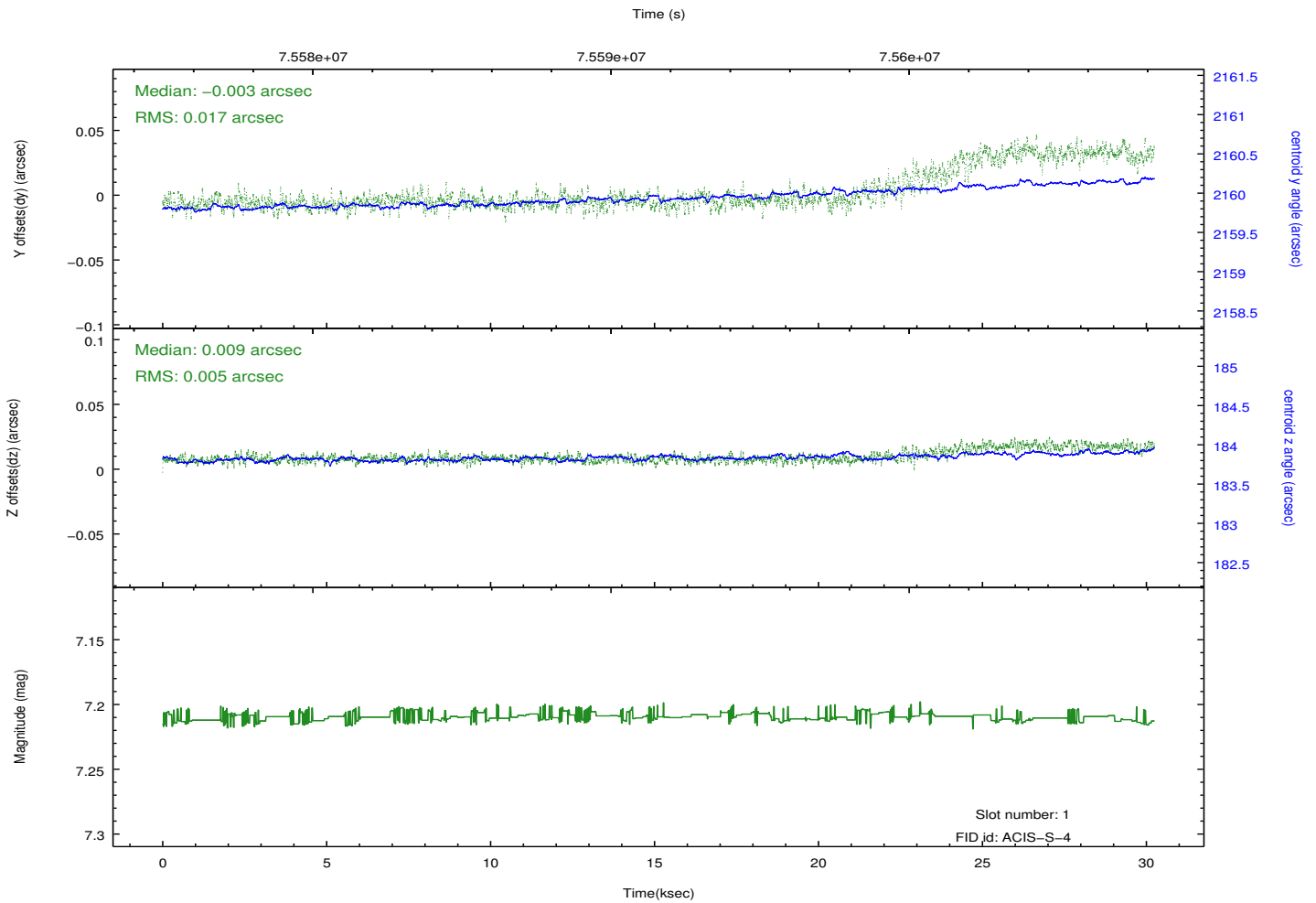
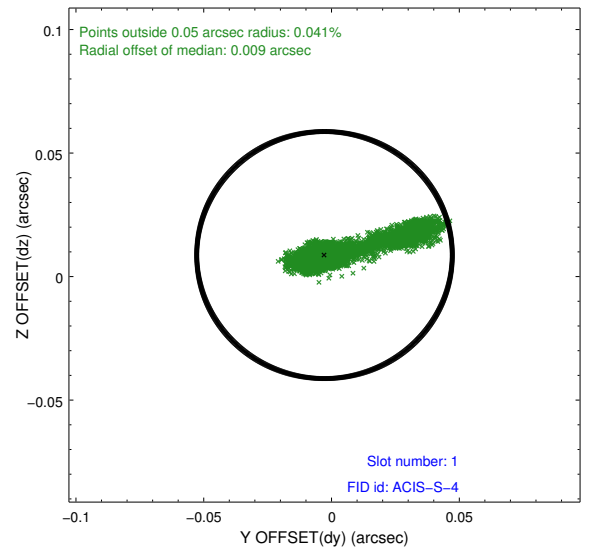
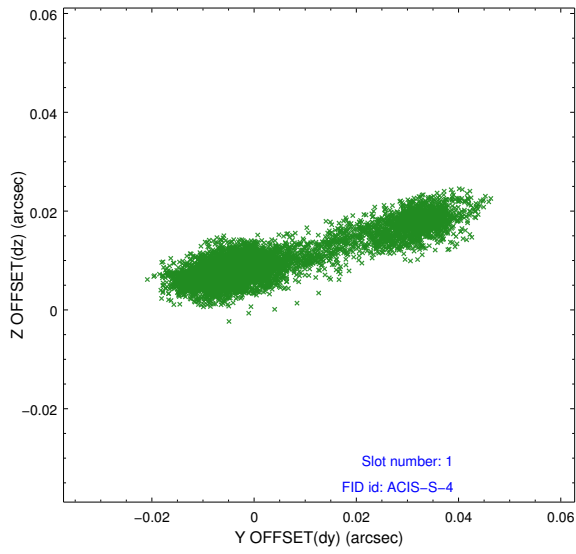


2.5 FID Slots

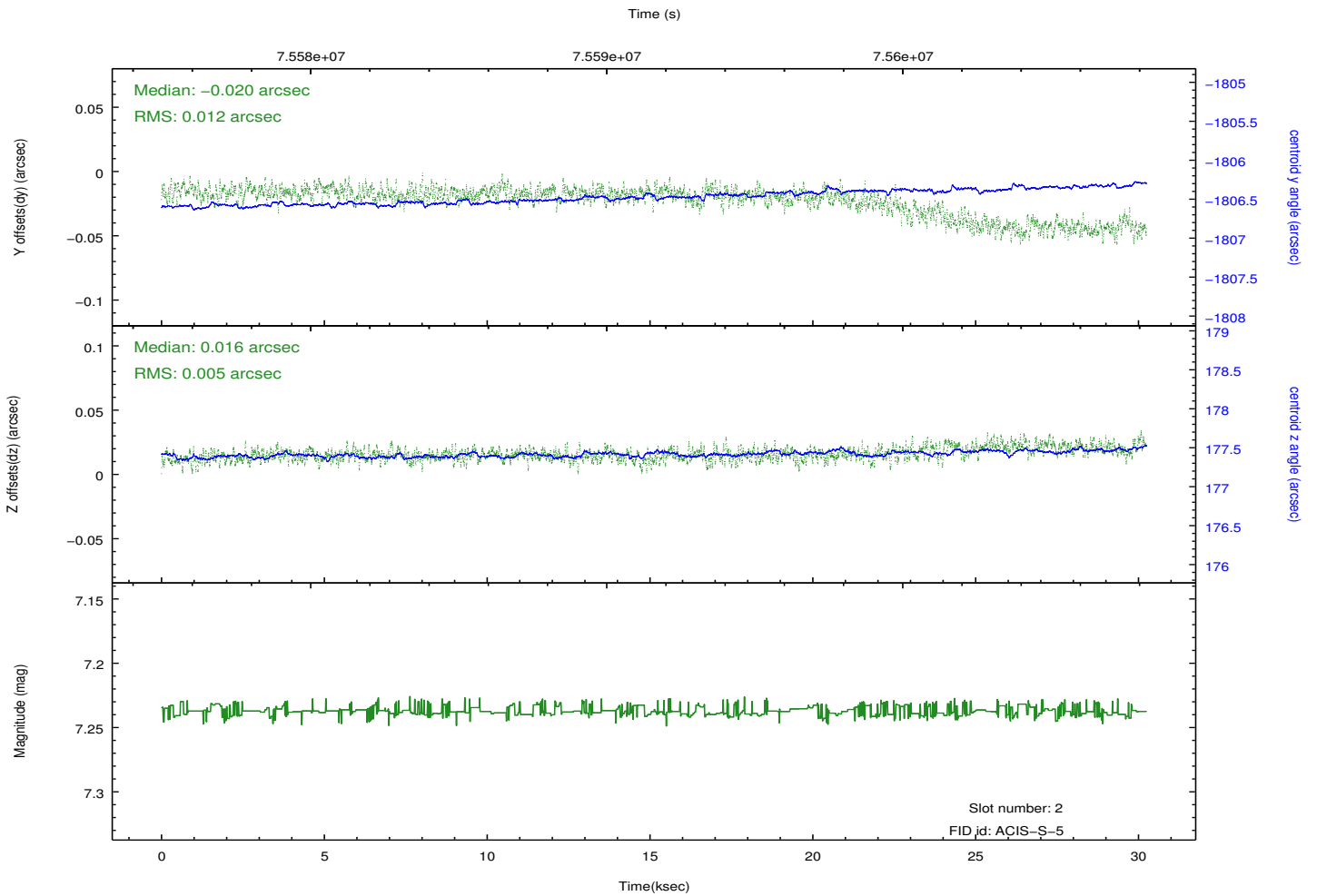
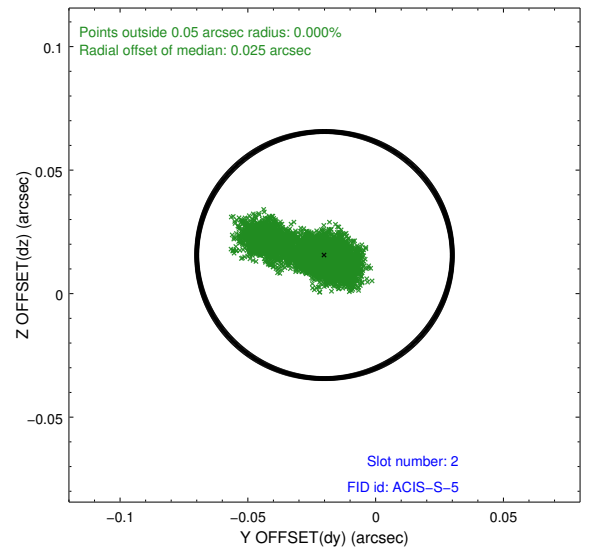
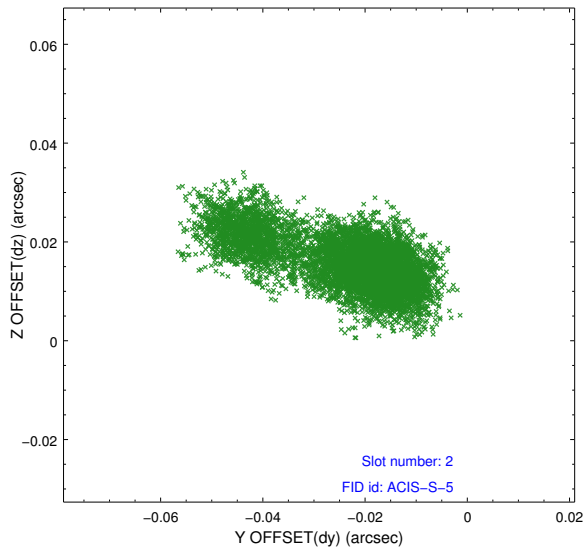
2.5.1 Slot 0



2.5.2 Slot 1



2.5.3 Slot 2



A Summary

A.1 Status

V&V Scientist	Jen Lauer
V&V Date (YYYY-MM-DD)	2012.08.30
V&V Edition	1
V&V Disposition and Status	OK
V&V Charge Time	30.246

A.2 Comments