

V&V Reference Report

L2 ASCDS Version : 8.4.4

Observation 7918 - L2 Version 2
Chandra X-Ray Center

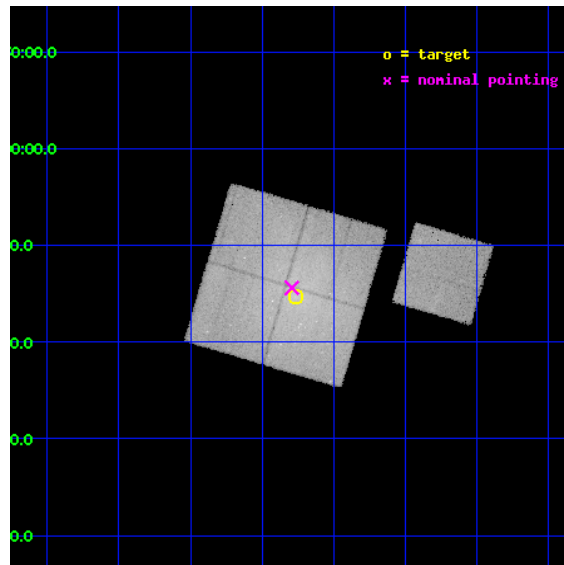
L2 Processing Date : Apr 29 2012

Contents

1	Front	2
2	OBI	3
2.1	OBI	3
2.1.1	Images	3
2.1.2	Bias	3
2.1.3	Parameters	4
2.1.4	Events	4
2.2	Compared Parameters	5
2.3	Aspect	6
2.4	Star Slots	9
2.4.1	Slot 3	9
2.4.2	Slot 4	10
2.4.3	Slot 5	11
2.4.4	Slot 6	12
2.4.5	Slot 7	13
2.5	FID Slots	14
2.5.1	Slot 0	14
2.5.2	Slot 1	15
2.5.3	Slot 2	16
A	Summary	17
A.1	Status	17
A.2	Comments	17

1 Front

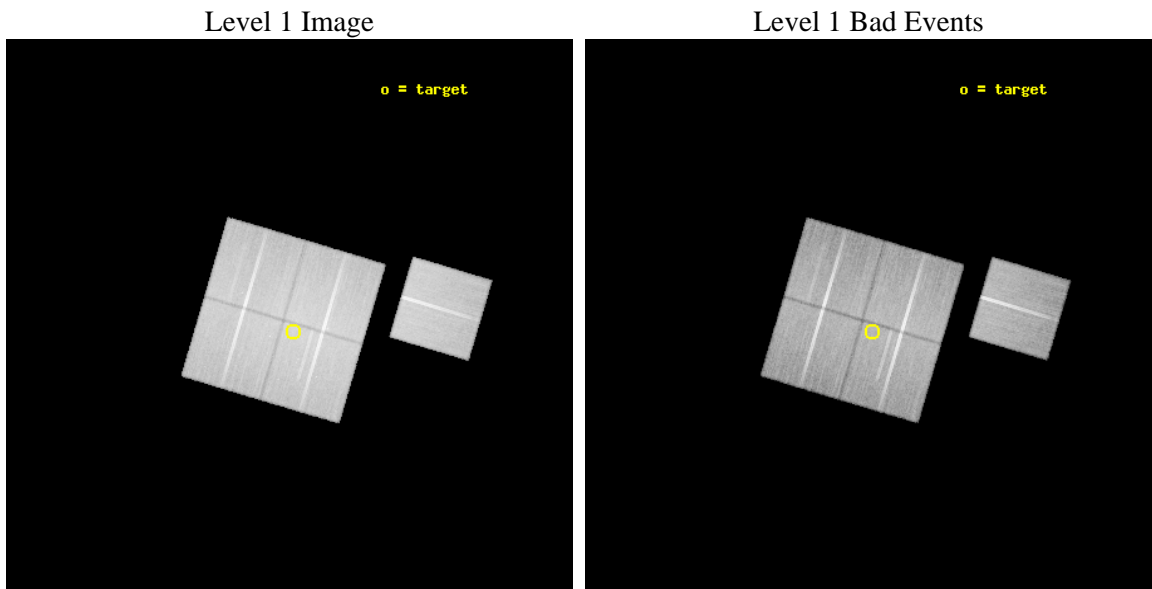
seq_num	800636	Sequence number
obs_id	7918	Observation id
title	Abell 119: Cluster Mergers and the Origin of Narrow-Angle-Tail Radio Galaxies	Proposal title
observer	Dr. CRAIG SARAZIN	Principal investigator
object	Abell 119	Source name
dtcycle	0	
cycle	P	events from which exps? Prim/Second/Both
ra_targ	14.067083	Observer's specified target RA [deg]
dec_targ	-1.255111	Observer's specified target Dec [deg]
ra_nom	14.073179590854	Nominal RA [deg]
dec_nom	-1.2400705735986	Nominal Dec [deg]
roll_nom	106.54458556649	Nominal Roll [deg]
revision	2	Processing version of data
ontime	45634.977360368	Sum of GTIs [s]
livetime	45038.722785173	Livetime [s]
ontime0	45625.554409385	Sum of GTIs [s]
ontime1	45641.259370685	Sum of GTIs [s]
ontime2	45628.695519149	Sum of GTIs [s]
ontime3	45634.977360368	Sum of GTIs [s]
ontime6	45641.259350836	Sum of GTIs [s]
l2events	284636	Number of level 2 events



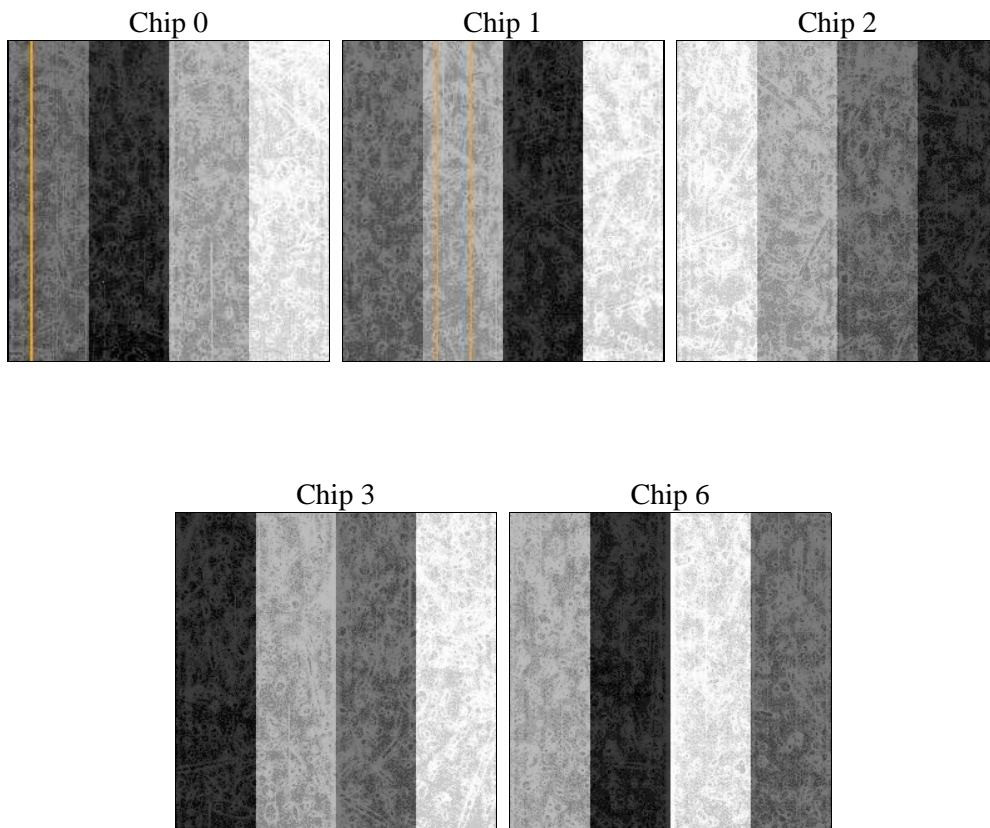
2 OBI

2.1 OBI

2.1.1 Images



2.1.2 Bias



2.1.3 Parameters

obi_num	0	Obi number	sched_exp_time	45500.000000	[s] Scheduled observation exposure time
ascdsver	8.4.4	Processing system revision	ontime	45634.977360368	Sum of GTIs [s]
caldsver	4.4.9	 	ontime0	45625.554409385	Sum of GTIs [s]
date	2012-04-29T15:56:56	Date and time of file creation	ontime1	45641.259370685	Sum of GTIs [s]
revision	2	Processing version of data	ontime2	45628.695519149	Sum of GTIs [s]
			ontime3	45634.977360368	Sum of GTIs [s]
			ontime6	45641.259350836	Sum of GTIs [s]
			l1events	2044510	Number of level 1 events

2.1.4 Events

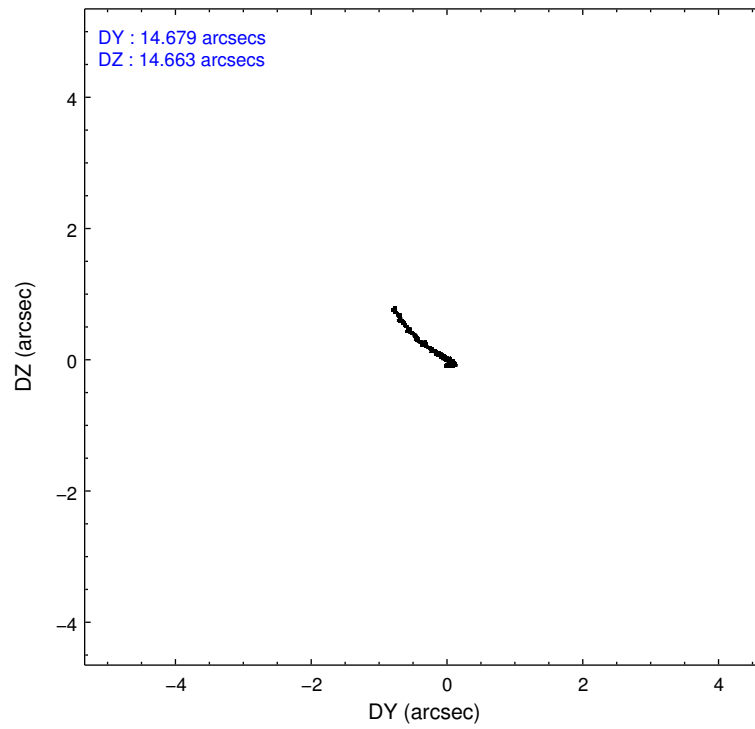
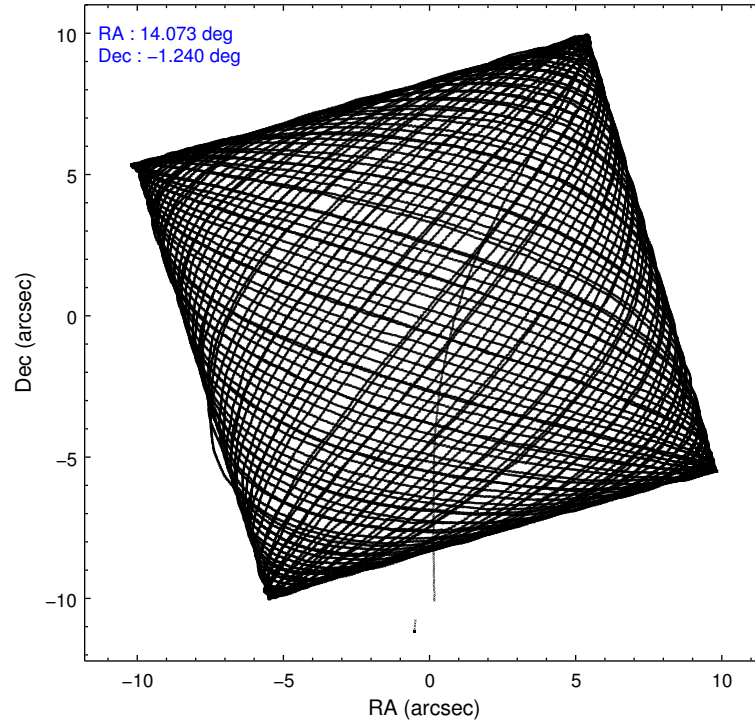
	ccd 0	ccd 1	ccd 2	ccd 3	ccd 6
level 1 events	392700	392258	442690	426235	390627
rejected events	329162	323859	372289	345847	349585
rejected %	83%	82%	84%	81%	89%

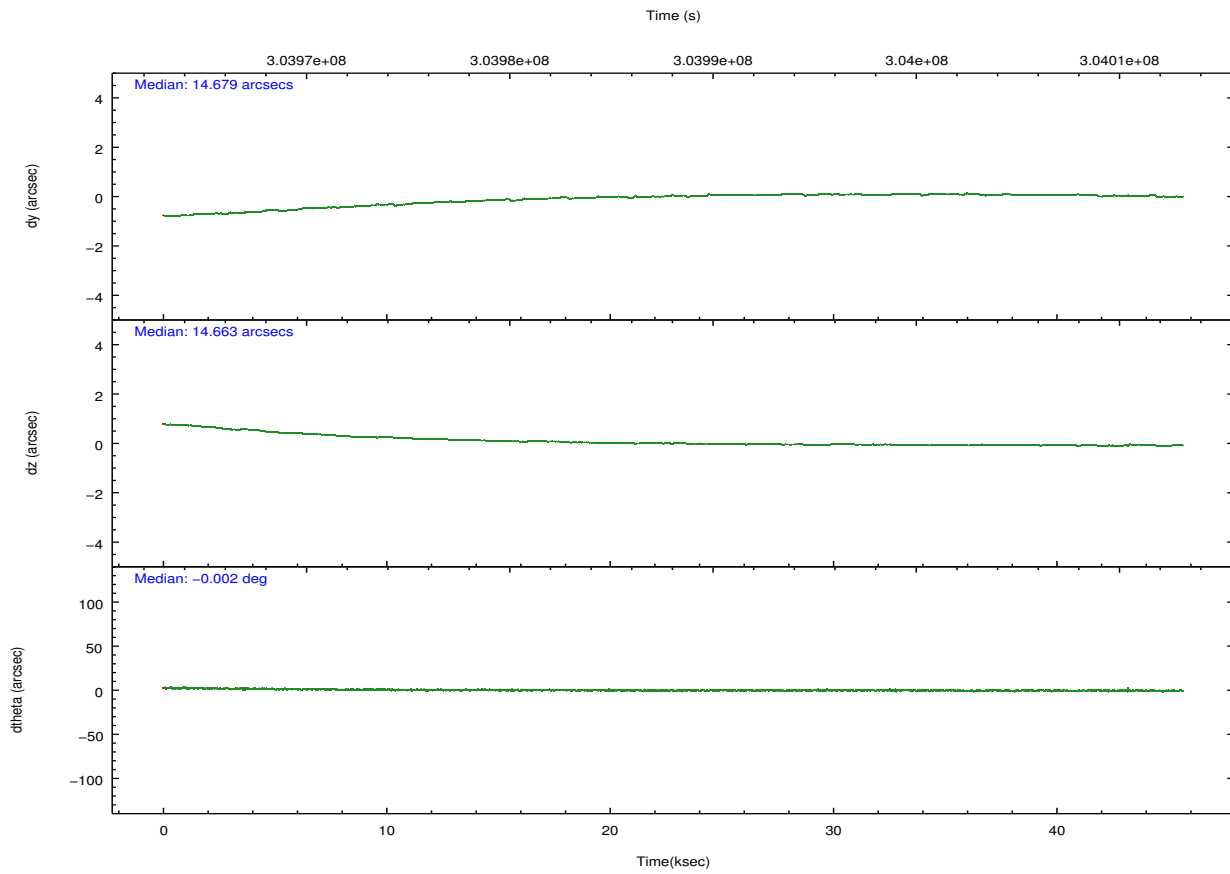
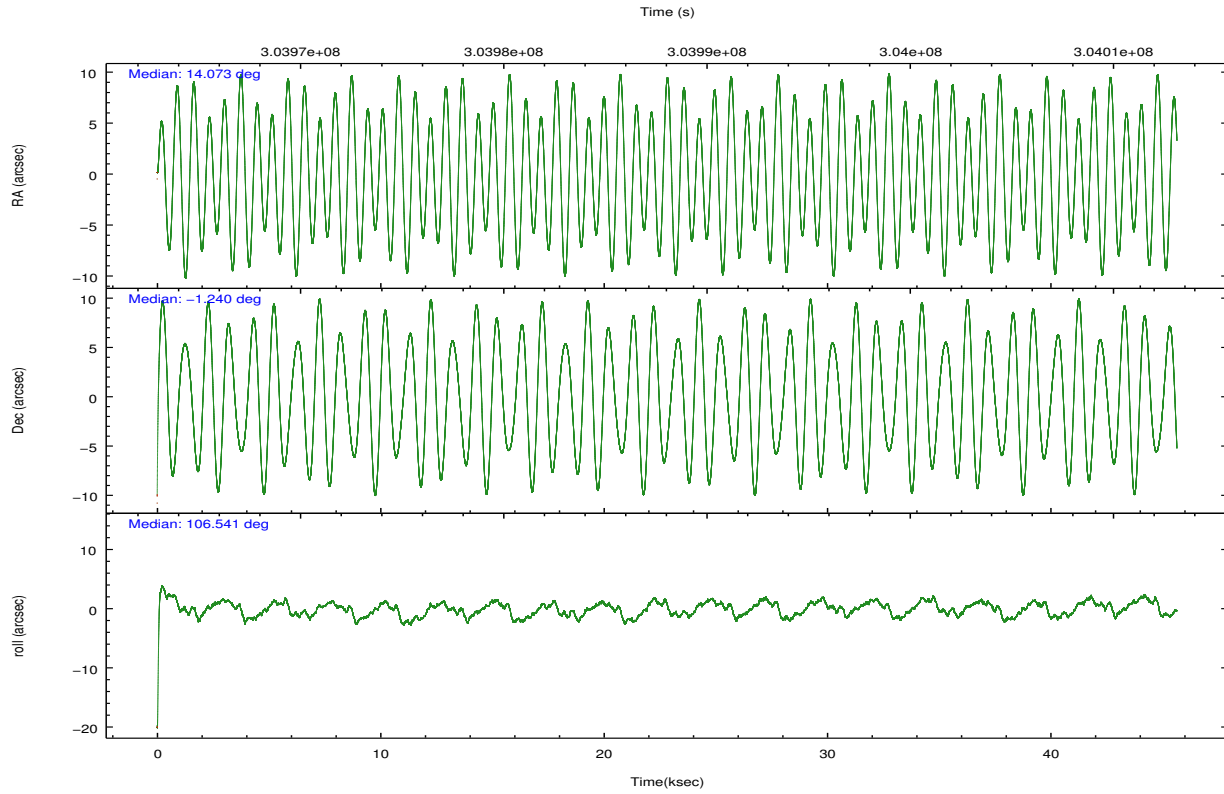
	ccd 0	ccd 1	ccd 2	ccd 3	ccd 6
grade 0 events	35272	37672	41785	50451	16847
	8%	9%	9%	11%	4%
grade 1 events	315	340	426	450	205
	0%	0%	0%	0%	0%
grade 2 events	11940	12413	12417	12410	8991
	3%	3%	2%	2%	2%
grade 3 events	5044	5529	5134	5450	4400
	1%	1%	1%	1%	1%
grade 4 events	5041	5395	5046	5470	4224
	1%	1%	1%	1%	1%
grade 5 events	13331	14919	12949	15818	15326
	3%	3%	2%	3%	3%
grade 6 events	7984	9321	7897	8317	8385
	2%	2%	1%	1%	2%
grade 7 events	313773	306669	357036	327869	332249
	79%	78%	80%	76%	85%

2.2 Compared Parameters

Parameter	Planned	Actual	Parameter	Planned	Actual
Instrument	ACIS	ACIS	Obspar format version number	7	7
Detector	ACIS-01236	ACIS-01236	Obspar file type	PREDICTED	ACTUAL
Grating	NONE	NONE	Obspar update status	NONE	UPDATED
Data mode	VFAINT	VFAINT	CCD I0 on	Y	Y
Observation mode	POINTING	POINTING	CCD I1 on	Y	Y
[deg] Pointing RA	14.093219	14.07317959085361	CCD I2 on	Y	Y
[deg] Pointing Dec	-1.258917	-1.240070573598562	CCD I3 on	Y	Y
[deg] Pointing Roll	106.336341	106.5445855664936	CCD S0 on	N	N
[mm] SIM focus pos	-0.782348	-0.7809083437167272	CCD S1 on	N	N
[mm] SIM defocus	0	0.001439871863259334	CCD S2 on	O1	Y
[mm] SIM translation stage pos	-233.592463	-233.5874344608287	CCD S3 on	N	N
[mm] SIM translation stage offset	0	-0.005018542100998502	CCD S4 on	N	N
[s] Observation start time (MET)	303965357.184000	303963386.24486	CCD S5 on	N	N
Observation start date	2007-08-20T02:48:12	2007-08-20T02:16:26	Number of optional ACIS chips dropped	0	0
[s] Observation end time (MET)	304010857.184000	304011220.94716	On-chip summing requested	N	N
Observation end date	2007-08-20T15:26:32	2007-08-20T15:33:40	Subarray requested	NONE	NONE
Read mode	TIMED	TIMED	Alternating exposures requested	N	N
			[s] Primary exposure time	0.000000	3.1

2.3 Aspect



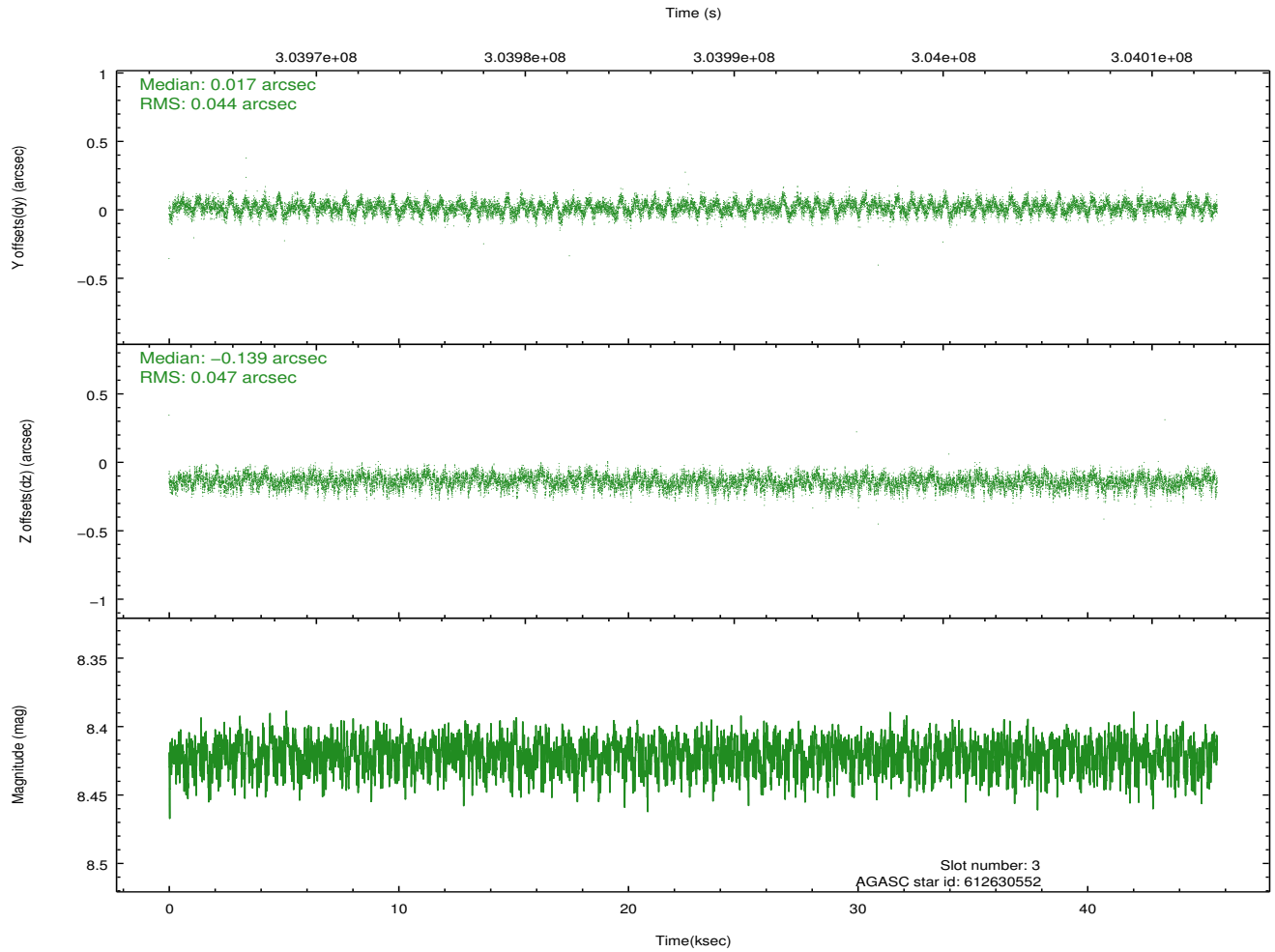
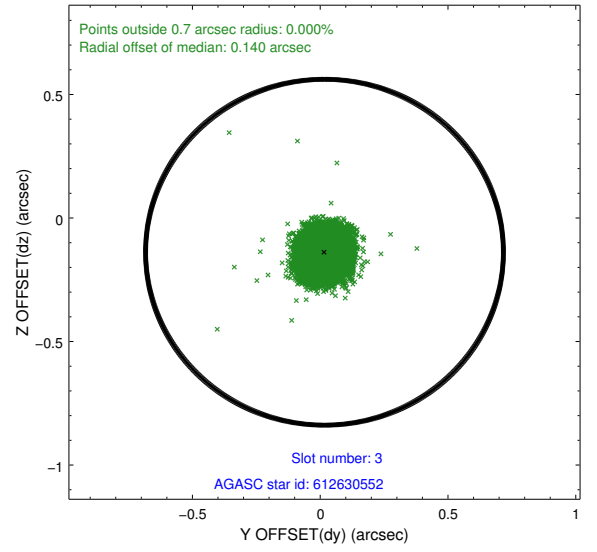
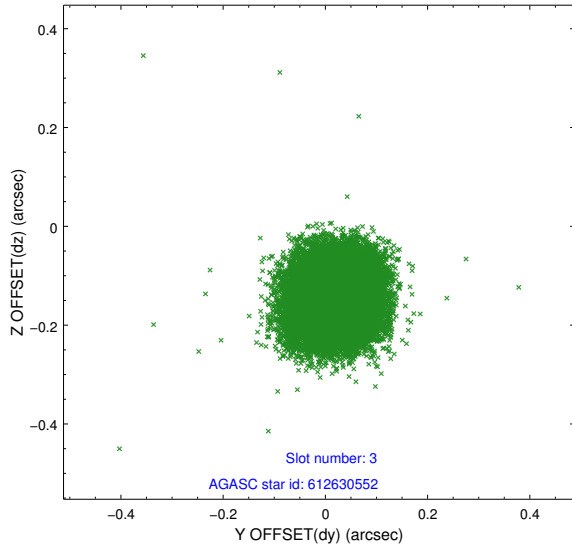


Slot Statistics

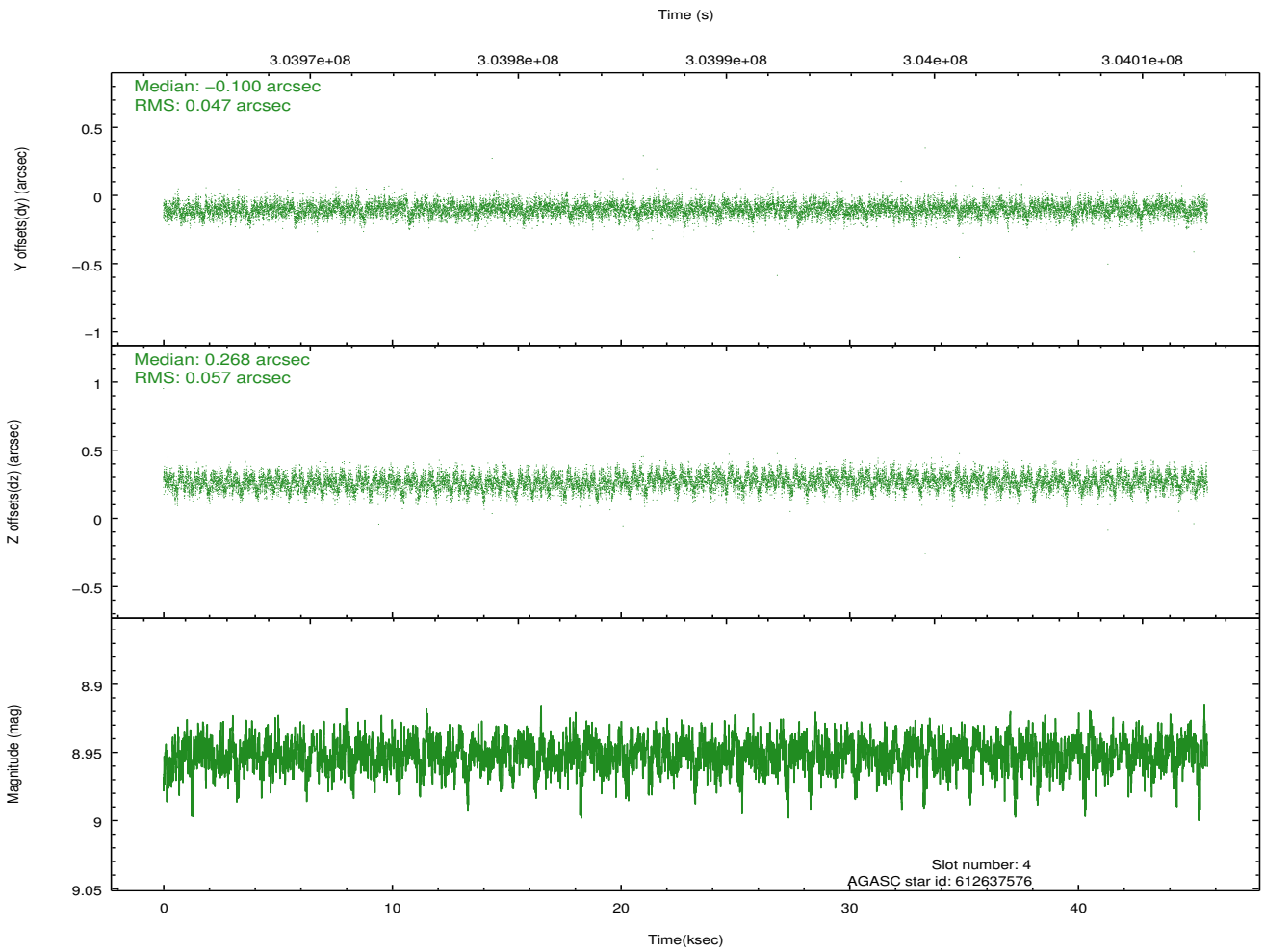
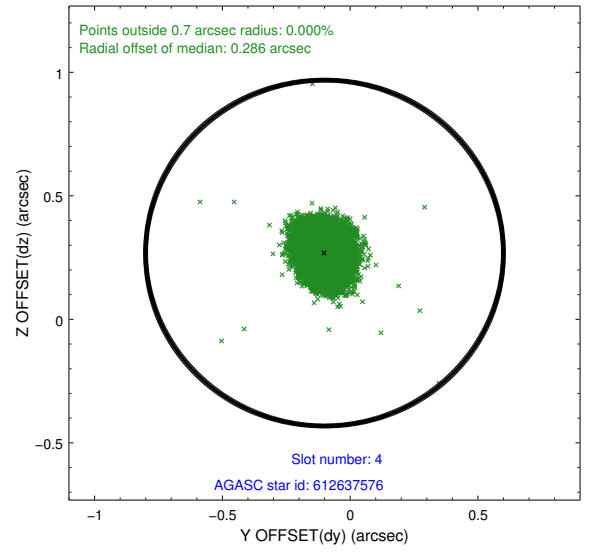
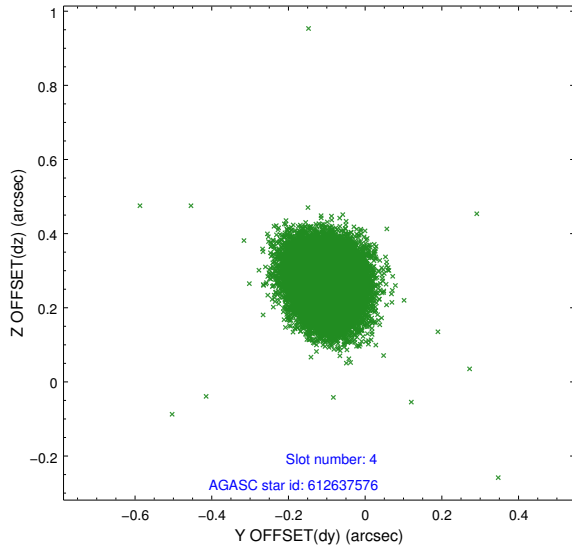
slot	status	id	mag	n_pts	med_dy	med_dz	dr1	dr2	ra	dec	mean_y	mean_z
0	FID	ACIS-I-1	7.23	11135	0.031	-0.003	0.016	0.038	0.000000	0.000000	924.96	-838.37
1	FID	ACIS-I-5	7.22	11134	-0.222	0.033	0.009	0.014	0.000000	0.000000	-1823.42	1059.16
2	FID	ACIS-I-6	7.24	11136	0.098	0.043	0.012	0.027	0.000000	0.000000	390.56	1703.67
3	GUIDE	612630552	8.42	22256	0.017	-0.139	0.068	0.110	13.806949	-1.503313	-554.59	1235.87
4	GUIDE	612637576	8.95	22255	-0.100	0.268	0.079	0.126	14.501240	-0.747907	1352.37	-1926.22
5	GUIDE	612638048	8.80	22253	-0.087	-0.198	0.076	0.119	13.944560	-0.794877	1753.69	43.57
6	GUIDE	612639400	9.35	22245	0.276	0.077	0.088	0.143	14.334247	-1.816006	-2168.75	-265.83
7	GUIDE	612631440	9.37	22252	-0.104	-0.005	0.094	0.154	13.345518	-0.775803	2425.56	2094.28

2.4 Star Slots

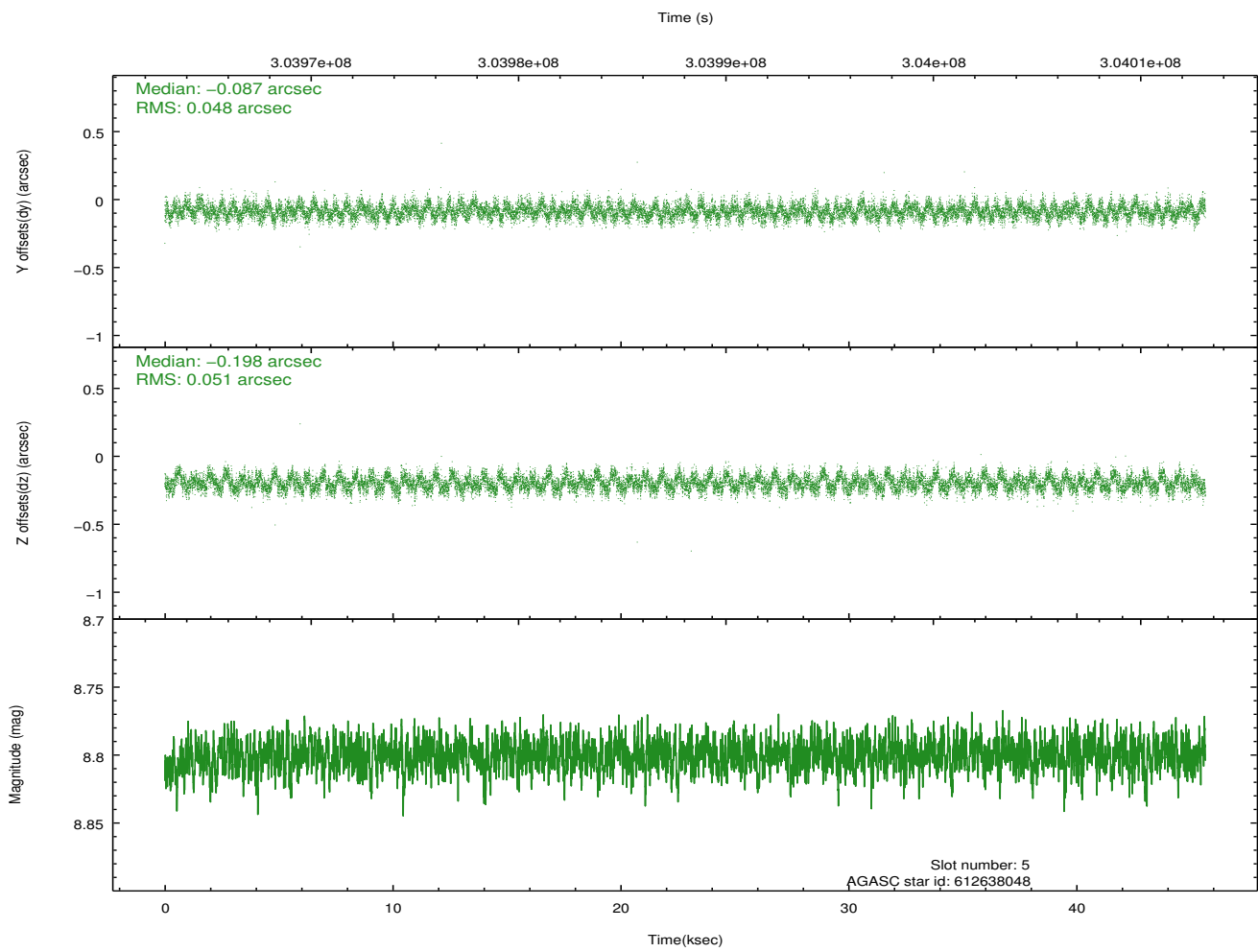
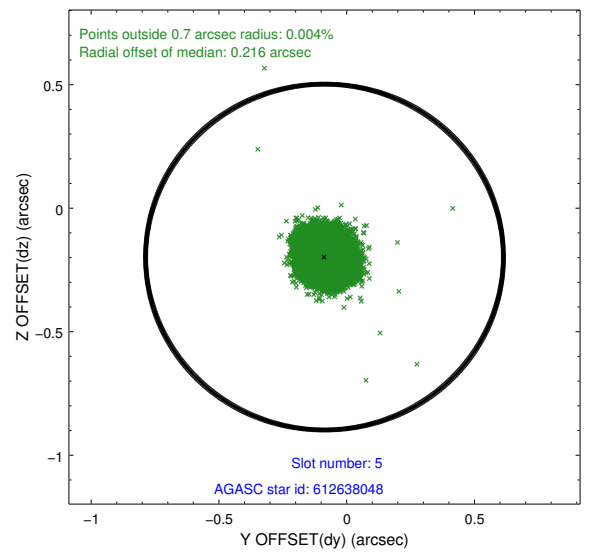
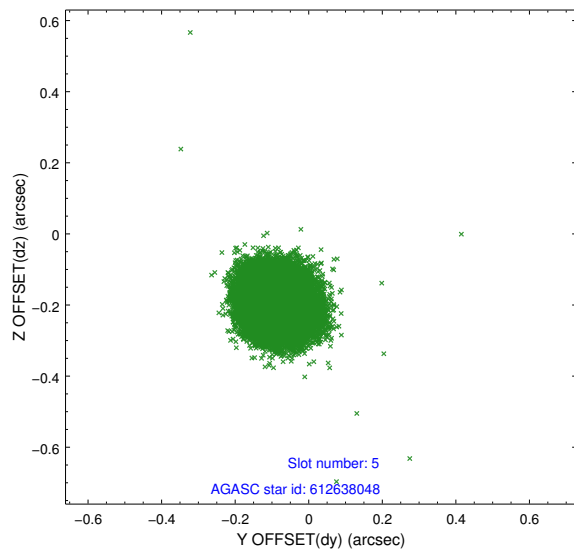
2.4.1 Slot 3



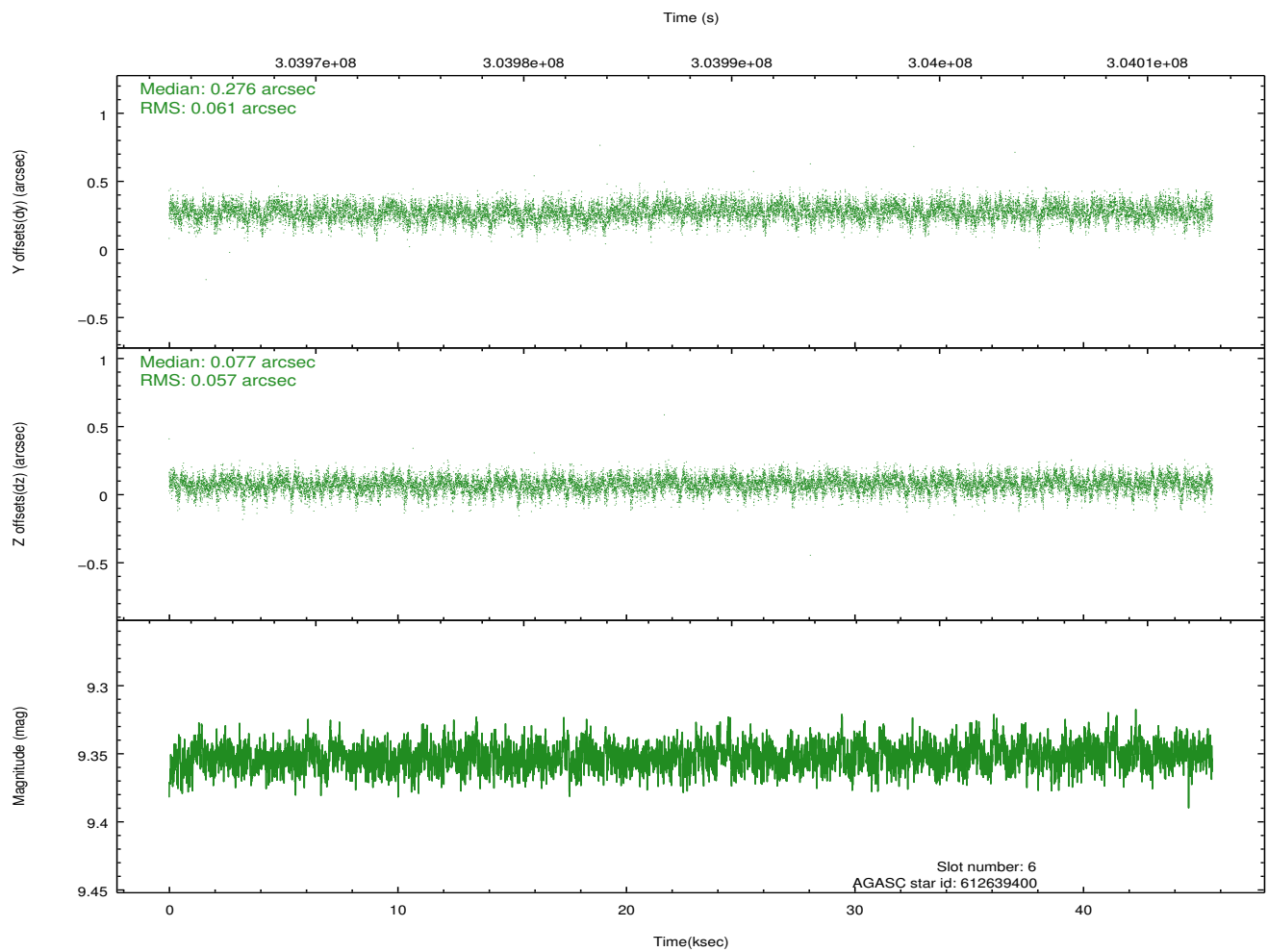
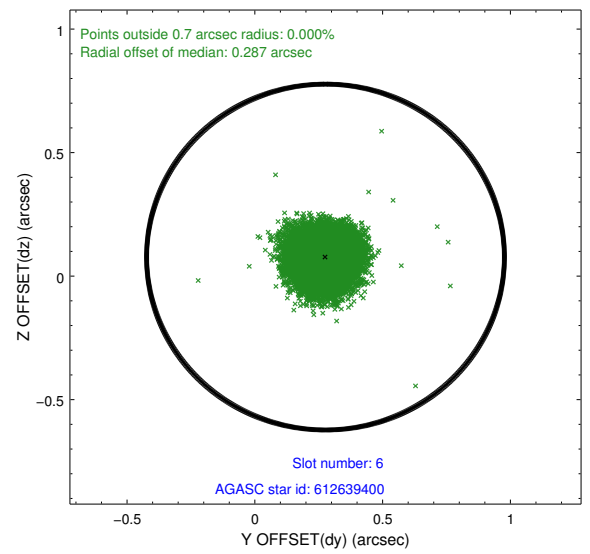
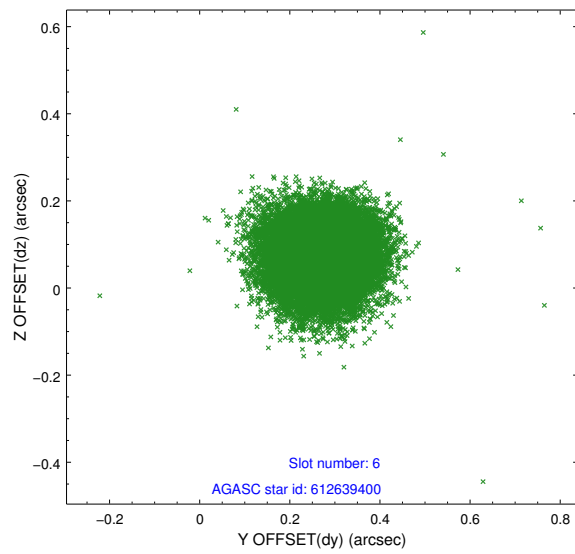
2.4.2 Slot 4



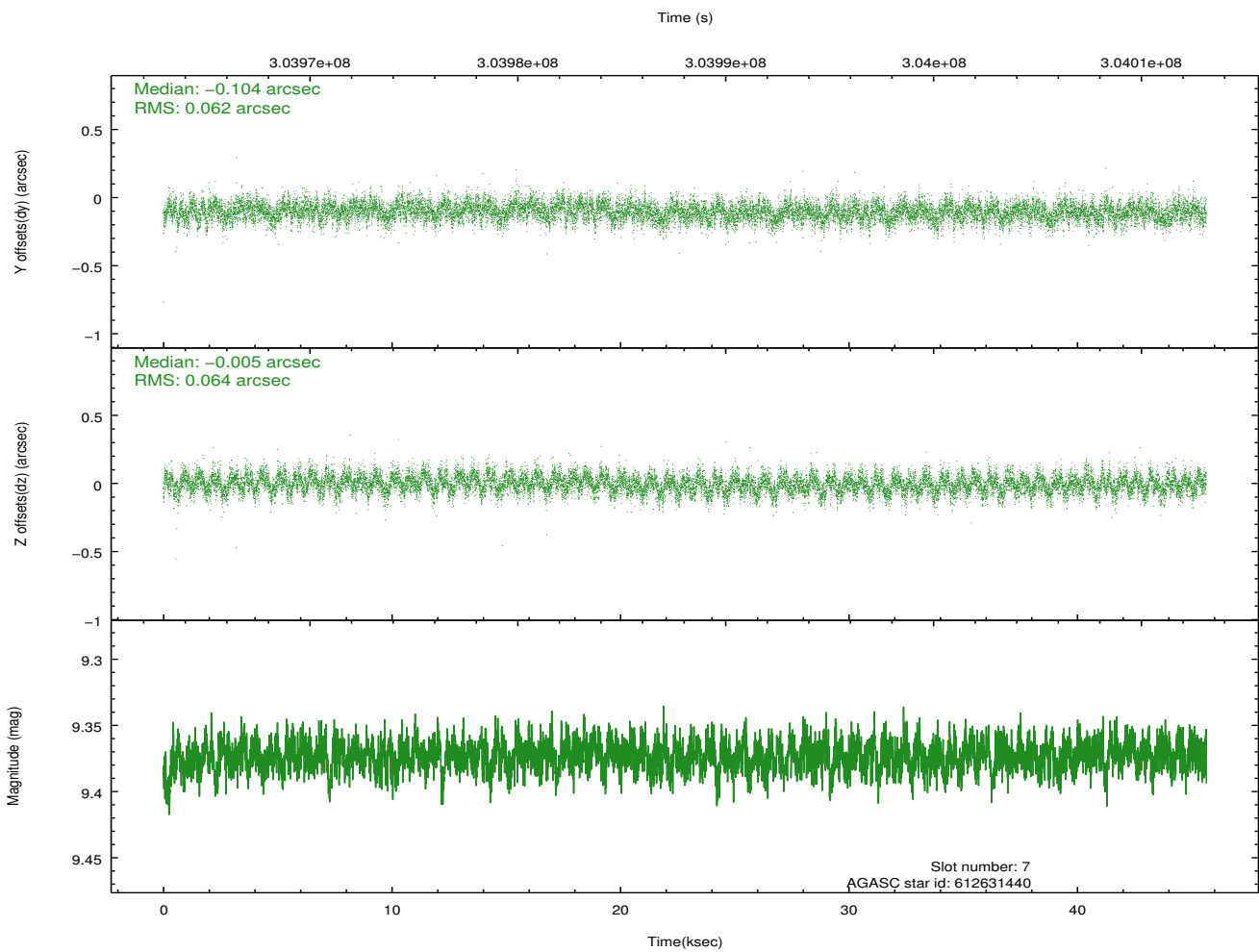
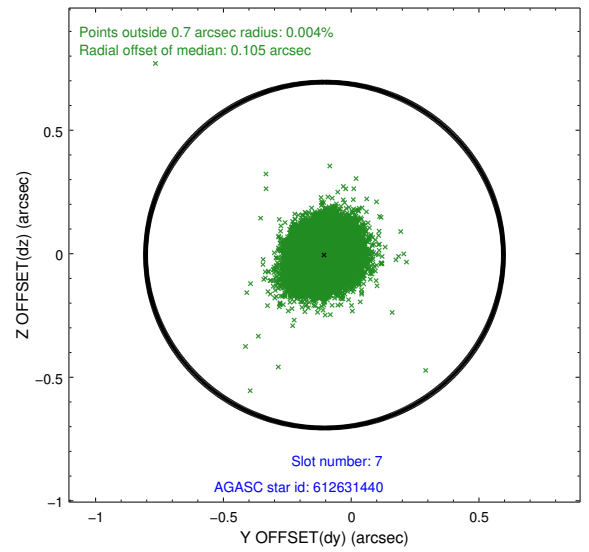
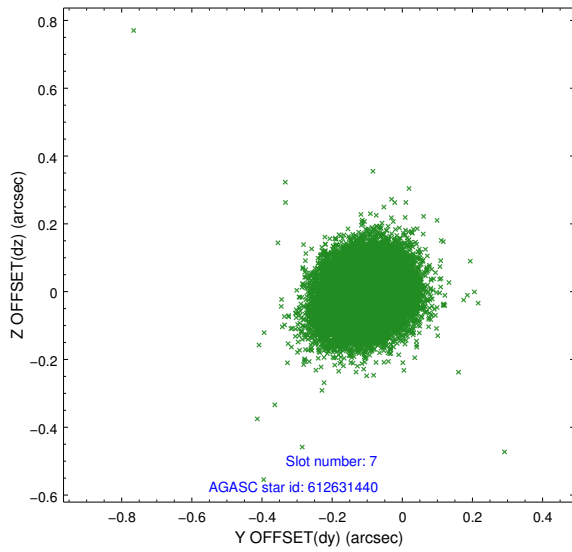
2.4.3 Slot 5



2.4.4 Slot 6

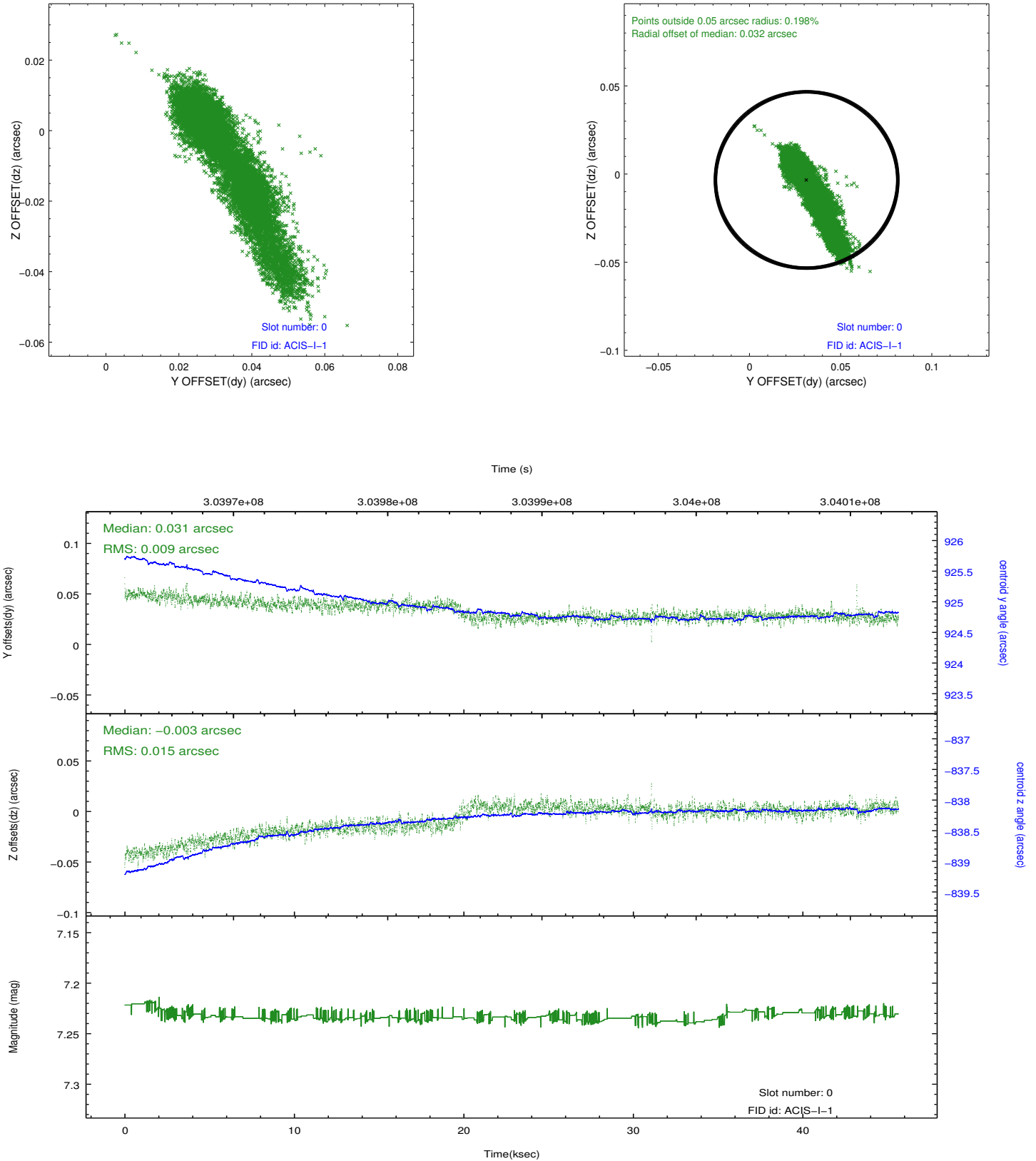


2.4.5 Slot 7

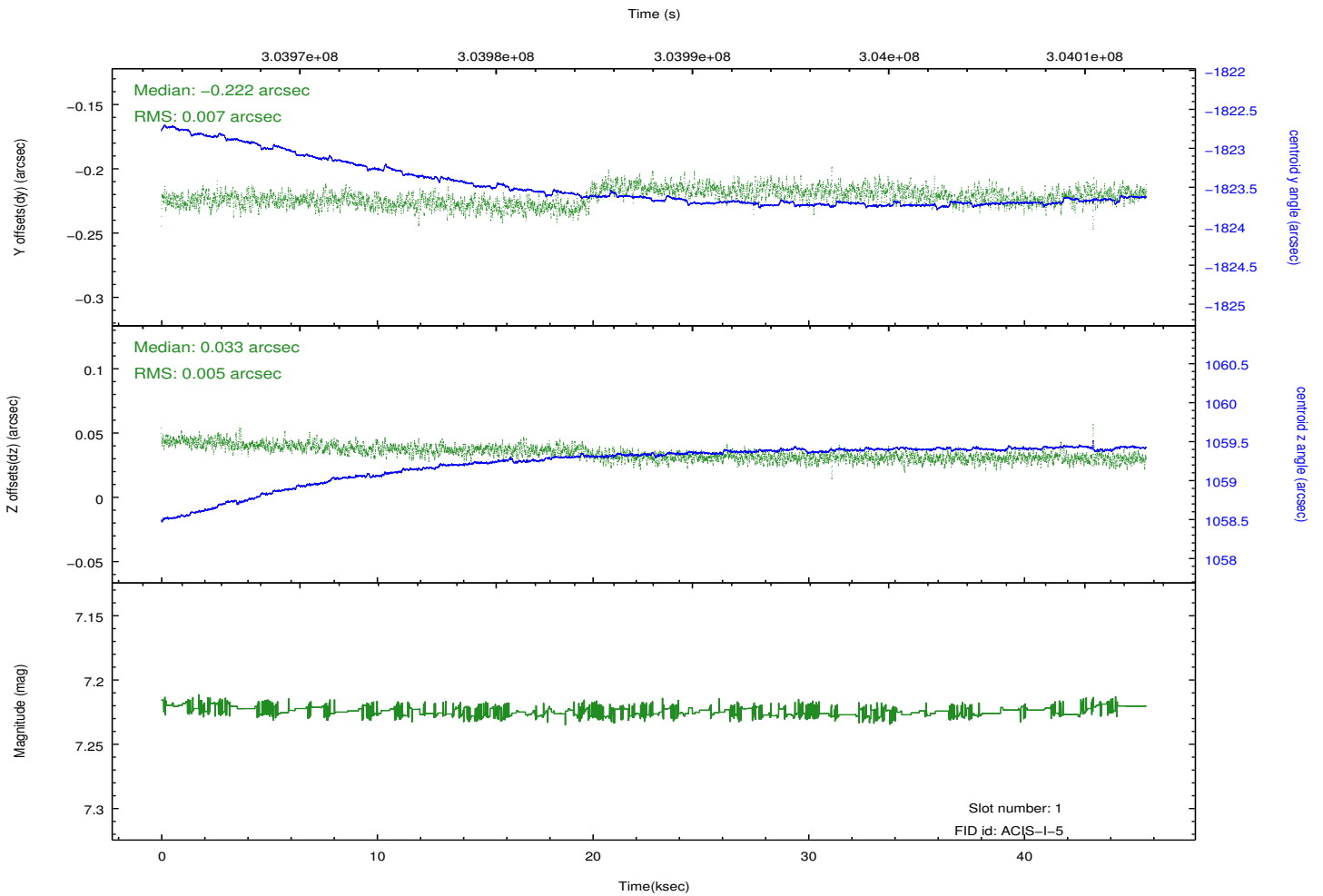
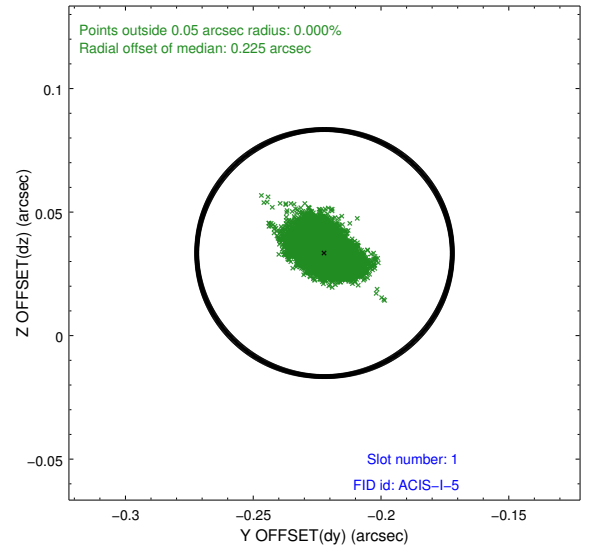
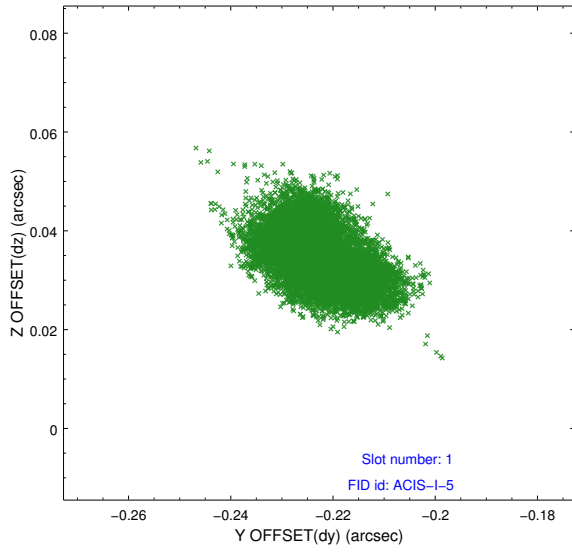


2.5 FID Slots

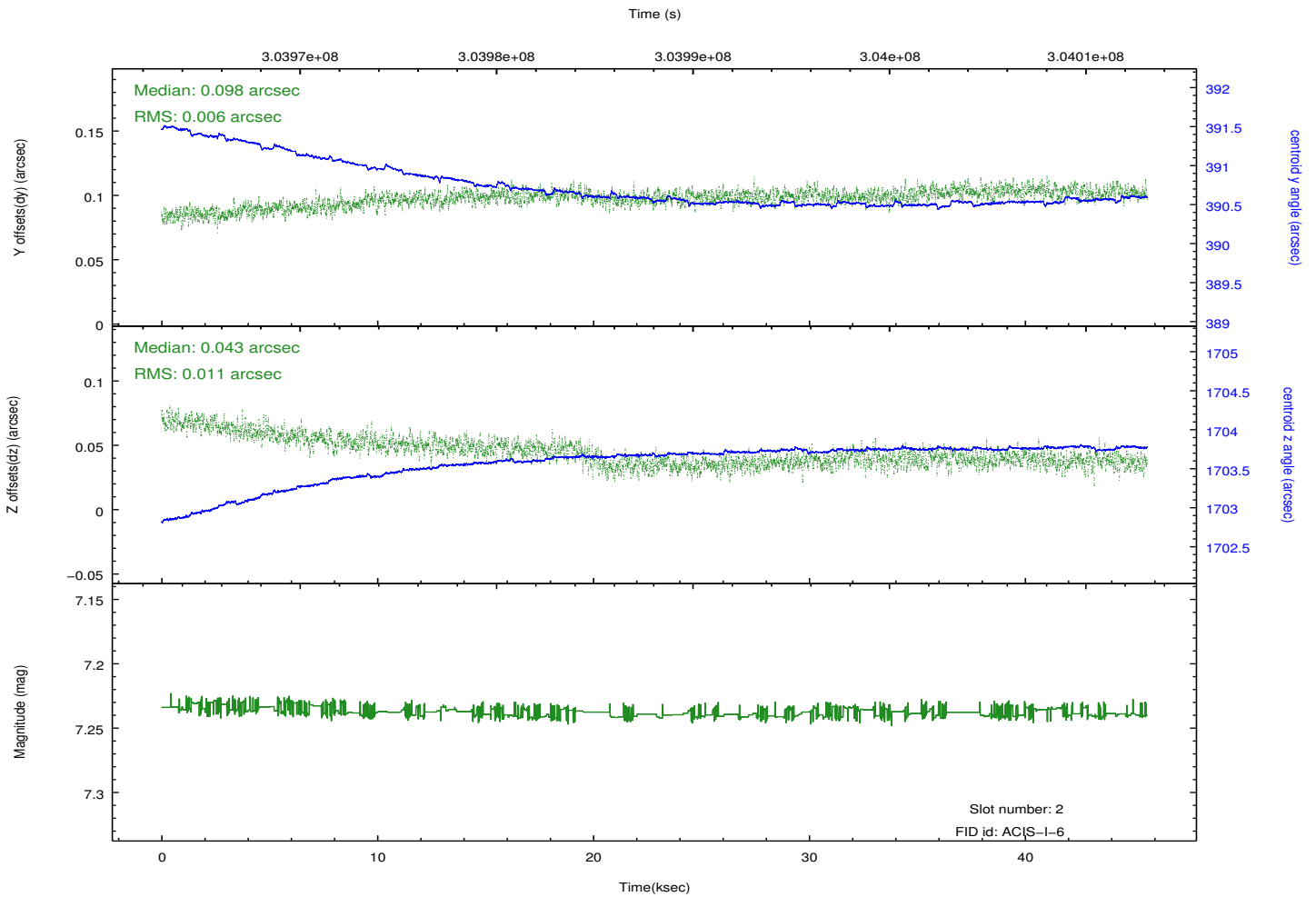
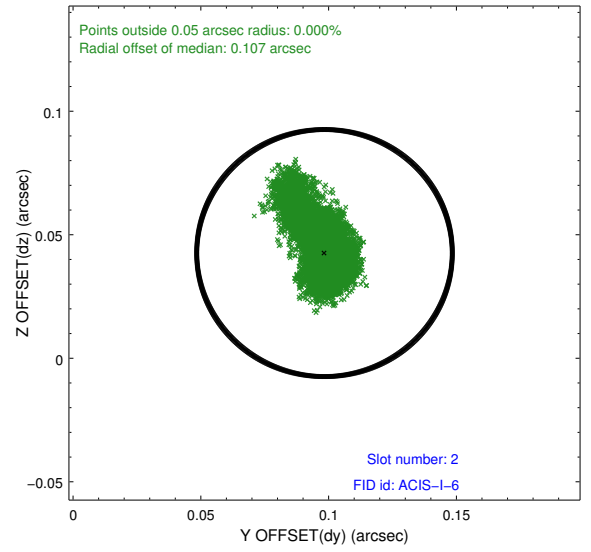
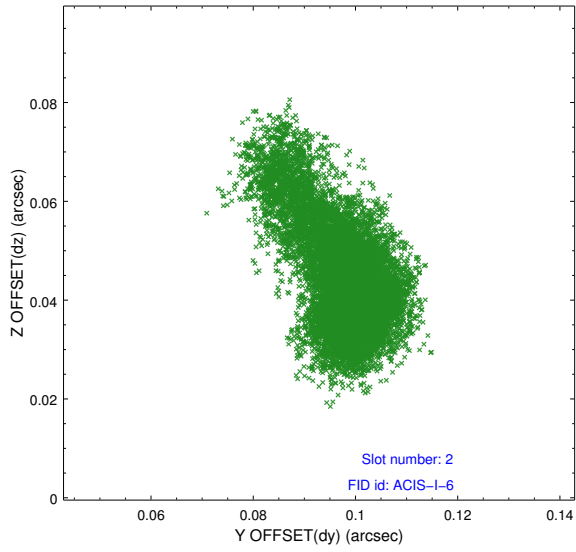
2.5.1 Slot 0



2.5.2 Slot 1



2.5.3 Slot 2



A Summary

A.1 Status

V&V Scientist	Beth Sundheim
V&V Date (YYYY-MM-DD)	2012.05.02
V&V Edition	1
V&V Disposition and Status	OK
V&V Charge Time	45.6349773

A.2 Comments