

V&V Reference Report

L2 ASCDS Version : 8.4.4

Observation 8018 - L2 Version 3
Chandra X-Ray Center

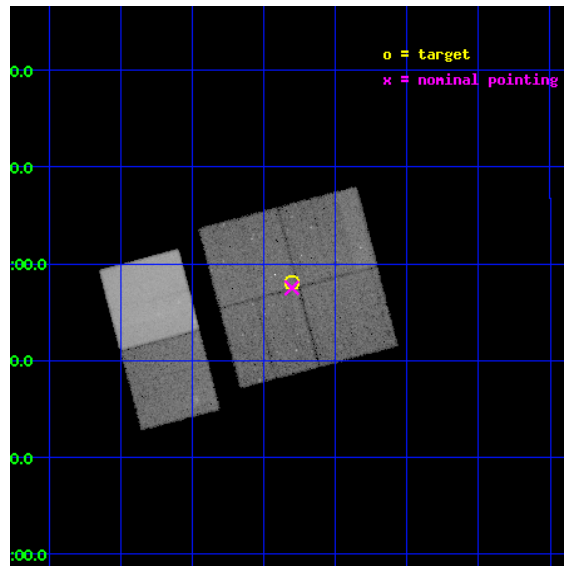
L2 Processing Date : Apr 22 2012

Contents

1	Front	2
2	OBI	3
2.1	OBI	3
2.1.1	Images	3
2.1.2	Bias	3
2.1.3	Parameters	4
2.1.4	Events	4
2.2	Compared Parameters	5
2.3	Aspect	6
2.4	Star Slots	9
2.4.1	Slot 3	9
2.4.2	Slot 4	10
2.4.3	Slot 5	11
2.4.4	Slot 6	12
2.4.5	Slot 7	13
2.5	FID Slots	14
2.5.1	Slot 0	14
2.5.2	Slot 1	15
2.5.3	Slot 2	16
A	Summary	17
A.1	Status	17
A.2	Comments	17

1 Front

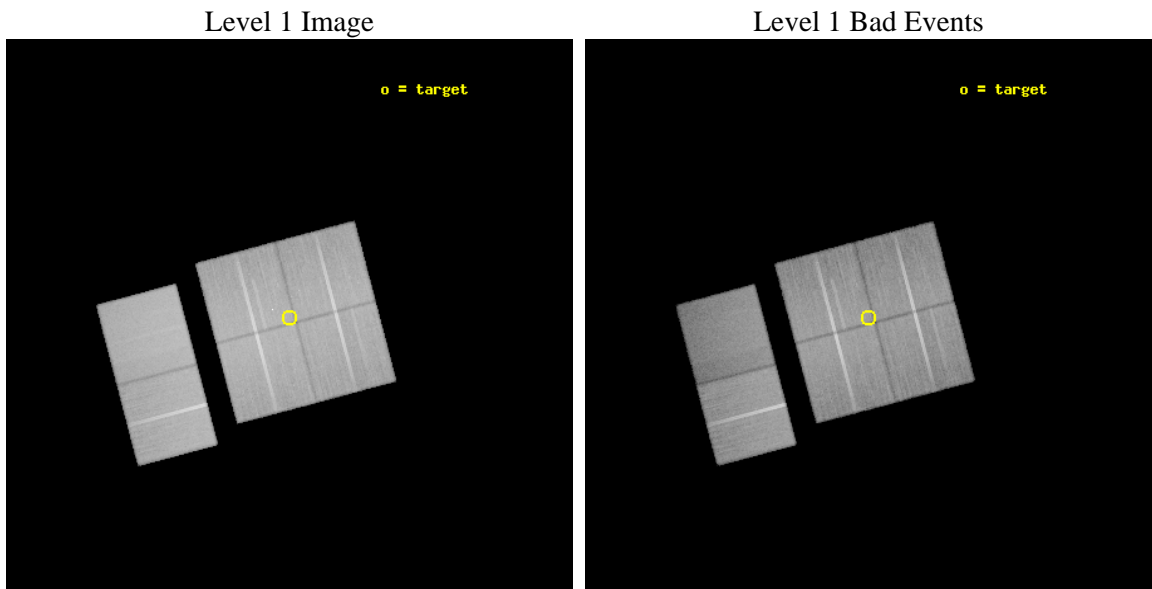
seq_num	900562	Sequence number
obs_id	8018	Observation id
title	THE CHANDRA-COSMOS SURVEY	Proposal title
observer	Dr. Martin Elvis	Principal investigator
object	C-COSMOS5-3	Source name
dtcycle	0	
cycle	P	events from which exps? Prim/Second/Both
ra_targ	150.075471	Observer's specified target RA [deg]
dec_targ	1.966772	Observer's specified target Dec [deg]
ra_nom	150.07581639633	Nominal RA [deg]
dec_nom	1.9586980382026	Nominal Dec [deg]
roll_nom	255.20867677089	Nominal Roll [deg]
revision	3	Processing version of data
ontime	47356.799823642	Sum of GTIs [s]
livetime	46757.139509433	Livetime [s]
ontime0	47350.317822933	Sum of GTIs [s]
ontime1	47356.799823642	Sum of GTIs [s]
ontime2	47350.317822993	Sum of GTIs [s]
ontime3	47356.799823642	Sum of GTIs [s]
ontime6	47356.799823642	Sum of GTIs [s]
ontime7	47356.799823642	Sum of GTIs [s]
l2events	344523	Number of level 2 events



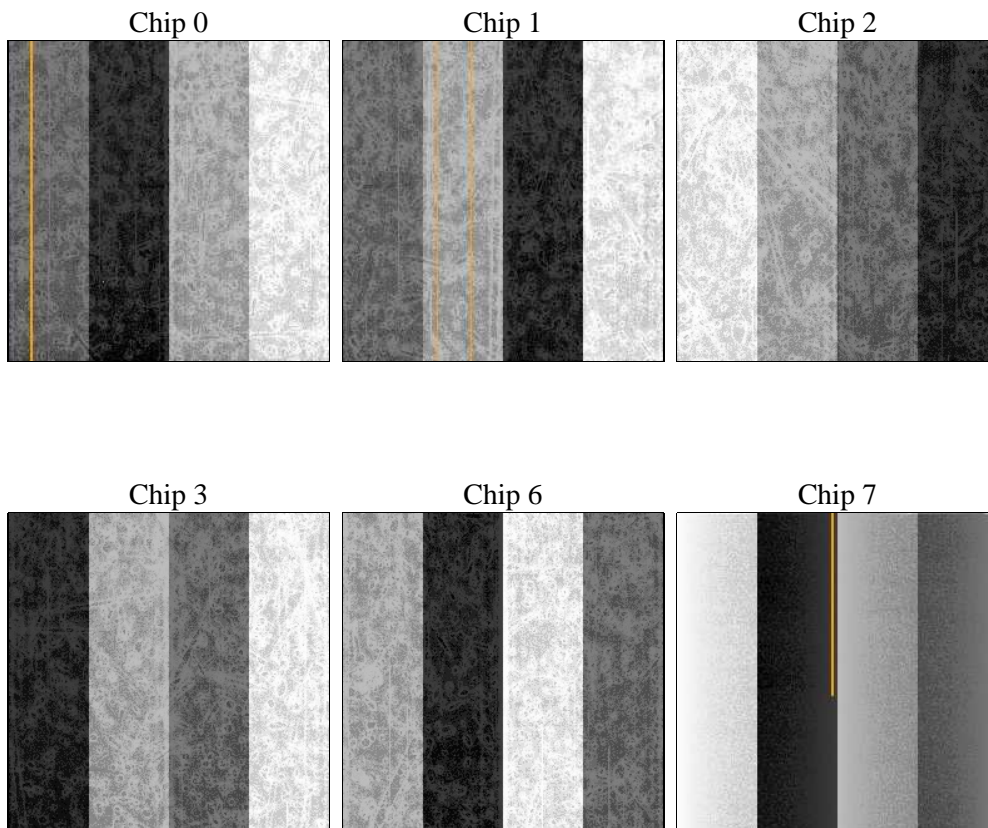
2 OBI

2.1 OBI

2.1.1 Images



2.1.2 Bias



2.1.3 Parameters

obi_num	1	Obi number	sched_exp_time	47602.435000	[s] Scheduled observation exposure time
ascdsver	8.4.4	Processing system revision	ontime	47356.799823642	Sum of GTIs [s]
caldbver	4.4.9	 	ontime0	47350.317822933	Sum of GTIs [s]
date	2012-04-22T21:35:30	Date and time of file creation	ontime1	47356.799823642	Sum of GTIs [s]
revision	3	Processing version of data	ontime2	47350.317822993	Sum of GTIs [s]
			ontime3	47356.799823642	Sum of GTIs [s]
			ontime6	47356.799823642	Sum of GTIs [s]
			ontime7	47356.799823642	Sum of GTIs [s]
			l1events	2279864	Number of level 1 events

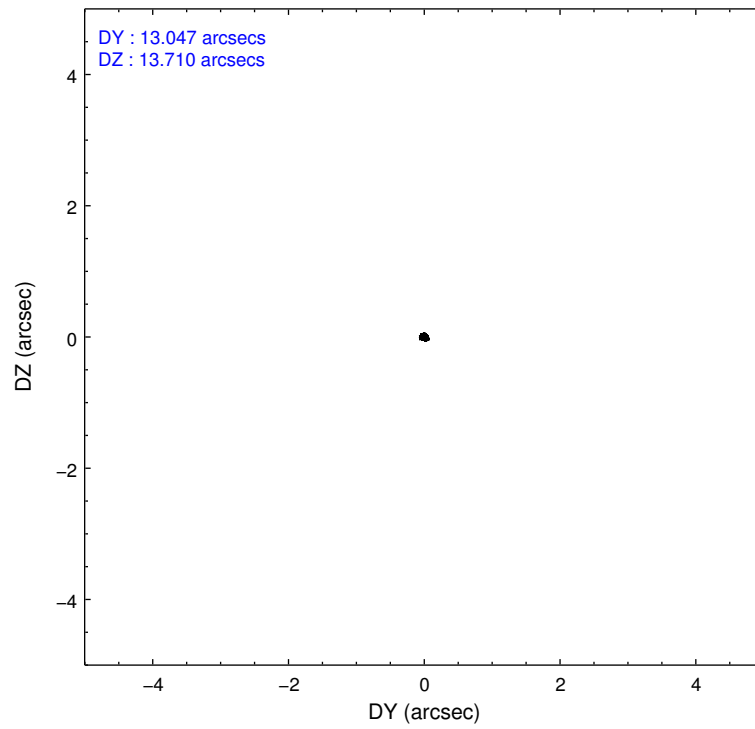
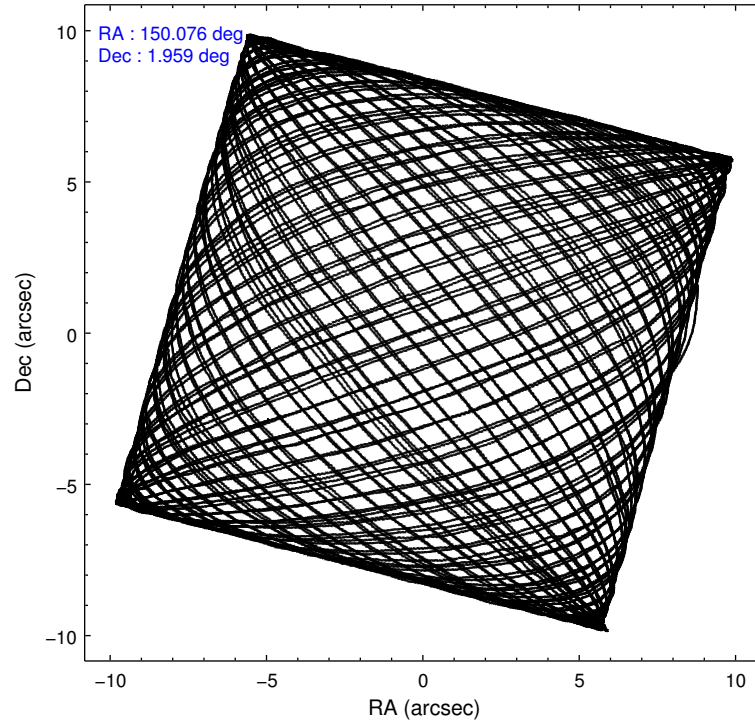
2.1.4 Events

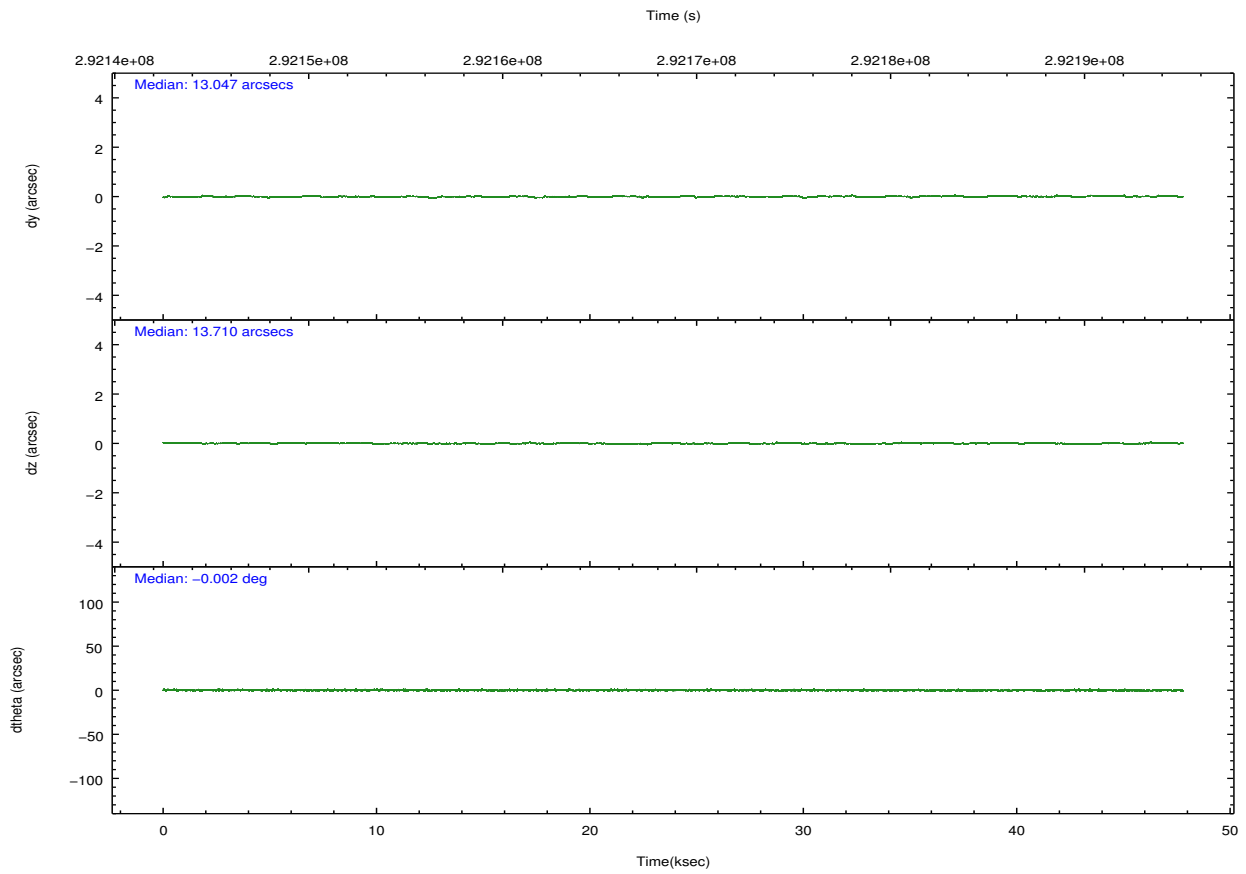
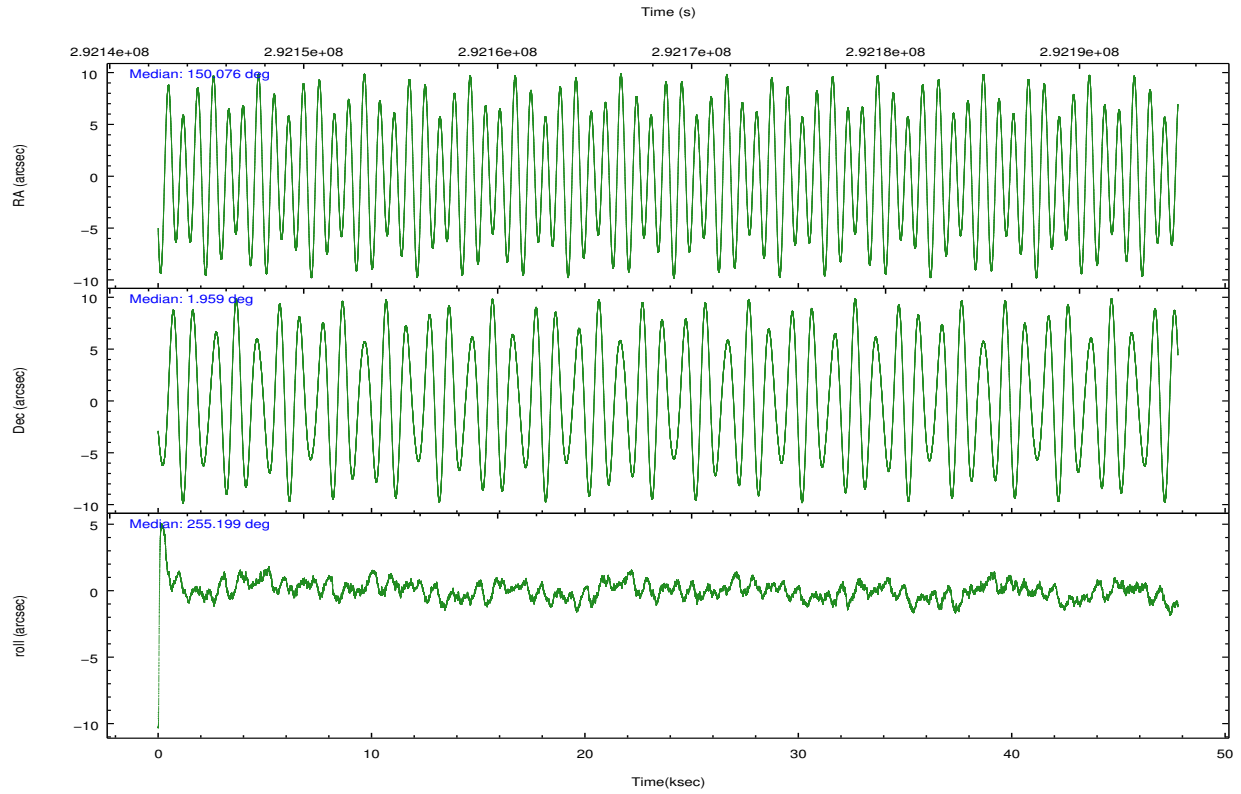
	ccd 0	ccd 1	ccd 2	ccd 3	ccd 6	ccd 7		ccd 0	ccd 1	ccd 2	ccd 3	ccd 6	ccd 7
level 1 events	350044	347548	390957	380242	393560	417513	grade 0 events	12804	15316	13740	13732	13984	17691
rejected events	313923	305738	354273	343318	354017	226795		3%	4%	3%	3%	3%	4%
rejected %	89%	87%	90%	90%	89%	54%	grade 1 events	211	228	219	216	207	538
								0%	0%	0%	0%	0%	0%
							grade 2 events	8376	9243	8447	7995	8768	38236
								2%	2%	2%	2%	2%	9%
							grade 3 events	4134	4532	3994	4105	4189	17395
								1%	1%	1%	1%	1%	4%
							grade 4 events	3797	4369	3973	4050	4255	17216
								1%	1%	1%	1%	1%	4%
							grade 5 events	12531	13885	12208	15009	15065	43430
								3%	3%	3%	3%	3%	10%
							grade 6 events	7015	8359	6538	7045	8352	100197
								2%	2%	1%	1%	2%	23%
							grade 7 events	301176	291616	341838	328090	338740	182810
								86%	83%	87%	86%	86%	43%

2.2 Compared Parameters

Parameter	Planned	Actual	Parameter	Planned	Actual
Instrument	ACIS	ACIS	Obspar format version number	7	7
Detector	ACIS-012367	ACIS-012367	Obspar file type	PREDICTED	ACTUAL
Grating	NONE	NONE	Obspar update status	NONE	UPDATED
Data mode	VFAINT	VFAINT	CCD I0 on	Y	Y
Observation mode	POINTING	POINTING	CCD I1 on	Y	Y
[deg] Pointing RA	150.068496	150.0758163963272	CCD I2 on	Y	Y
[deg] Pointing Dec	1.985205	1.958698038202638	CCD I3 on	Y	Y
[deg] Pointing Roll	255.000243	255.208676770893	CCD S0 on	N	N
[mm] SIM focus pos	-0.782348	-0.7809083437167272	CCD S1 on	N	N
[mm] SIM defocus	0	0.001439871863259334	CCD S2 on	O1	Y
[mm] SIM translation stage pos	-233.592463	-233.5874344608287	CCD S3 on	O2	Y
[mm] SIM translation stage offset	0	-0.005018542100998502	CCD S4 on	N	N
[s] Observation start time (MET)	292145083.184000	292144708.25459	CCD S5 on	N	N
Observation start date	2007-04-05T07:23:38	2007-04-05T07:18:28	Number of optional ACIS chips dropped	0	0
[s] Observation end time (MET)	292192686.184000	292192924.25689	On-chip summing requested	N	N
Observation end date	2007-04-05T20:37:01	2007-04-05T20:42:04	Subarray requested	NONE	NONE
Read mode	TIMED	TIMED	Alternating exposures requested	N	N
			[s] Primary exposure time	0.000000	3.2

2.3 Aspect





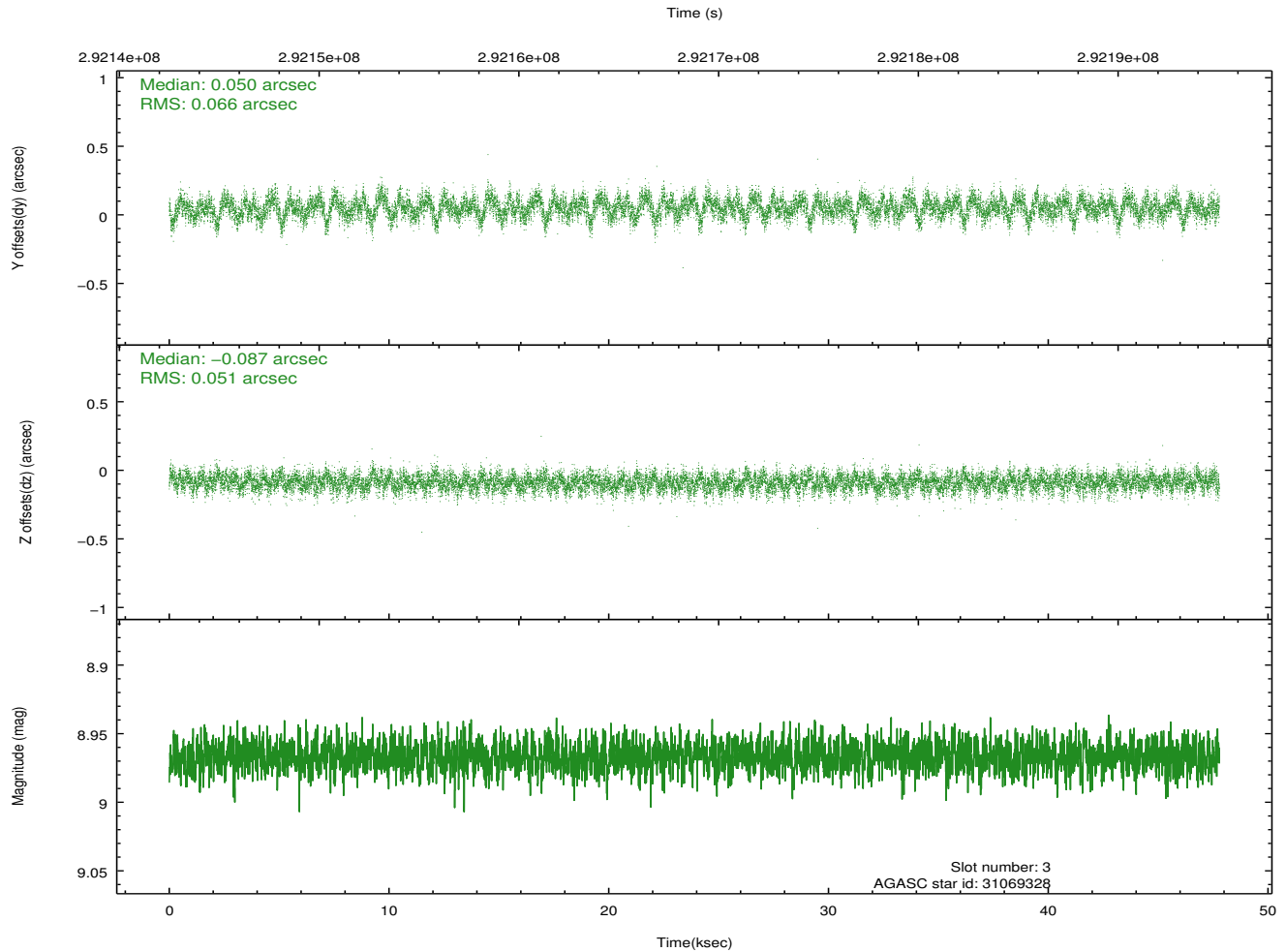
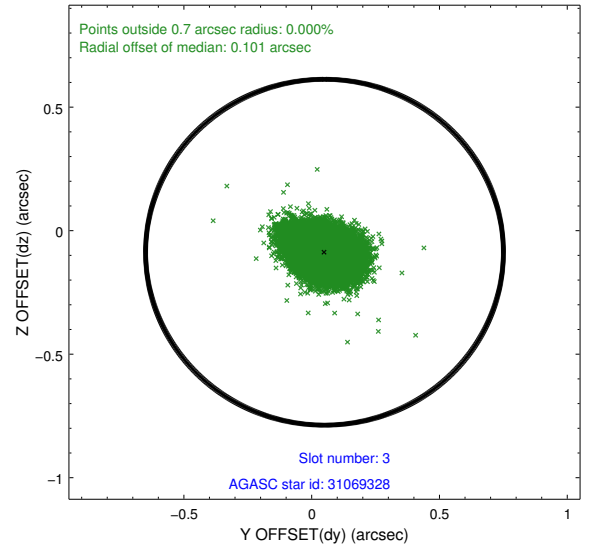
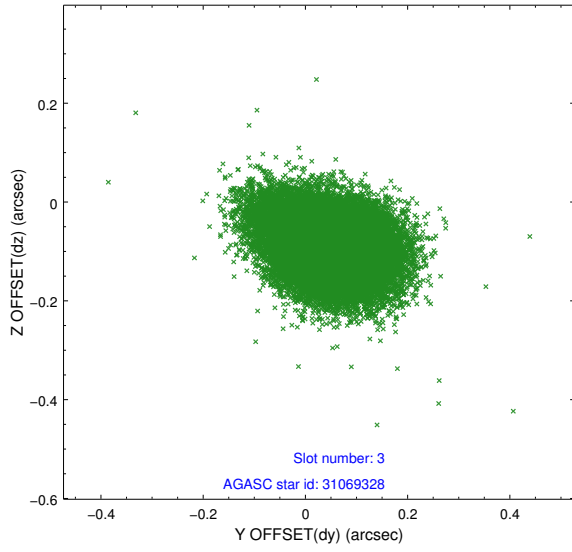
Slot Statistics

slot	status	id	mag	n_pts	med_dy	med_dz	dr1	dr2	ra	dec	mean_y	mean_z
0	FID	ACIS-I-1	7.24	11656	0.040	0.006	0.008	0.015	0.000000	0.000000	926.51	-837.27
1	FID	ACIS-I-5	7.23	11655	-0.222	0.046	0.007	0.014	0.000000	0.000000	-1821.87	1060.26
2	FID	ACIS-I-6	7.24	11656	0.091	0.019	0.008	0.014	0.000000	0.000000	392.11	1704.73
3	GUIDE	31069328	8.97	23298	0.050	-0.087	0.088	0.146	149.407760	1.639418	1818.04	-1974.27
4	GUIDE	31075128	9.34	23285	0.007	-0.111	0.105	0.172	149.584516	2.364347	-867.39	-2034.89
5	GUIDE	31076560	9.63	23221	0.078	0.133	0.128	0.217	149.884782	2.009277	88.03	-660.28
6	GUIDE	31983224	9.46	23286	0.101	-0.040	0.119	0.186	150.543757	1.869948	-41.88	1759.34
7	GUIDE	31983336	8.59	23304	-0.239	0.107	0.071	0.116	150.429924	2.291234	-1400.89	970.93

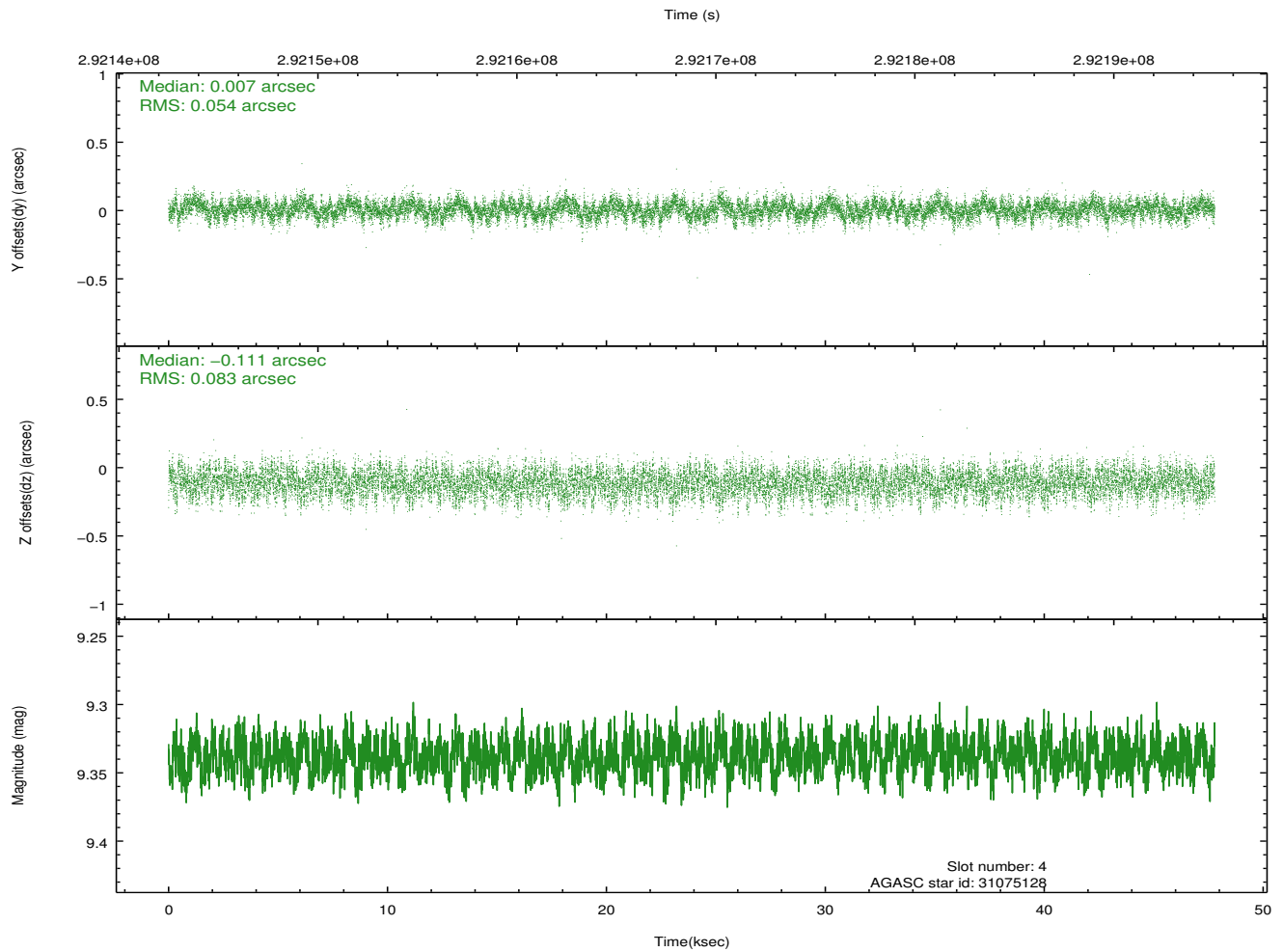
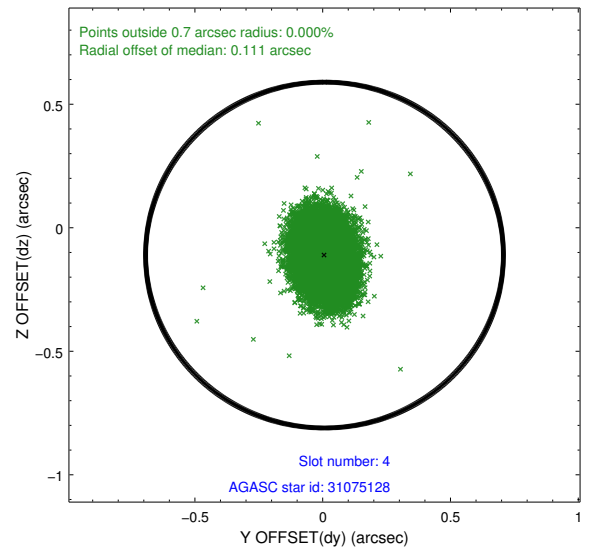
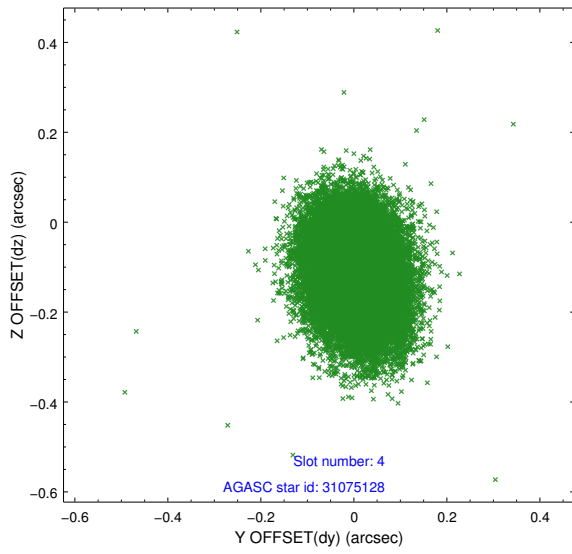
∞

2.4 Star Slots

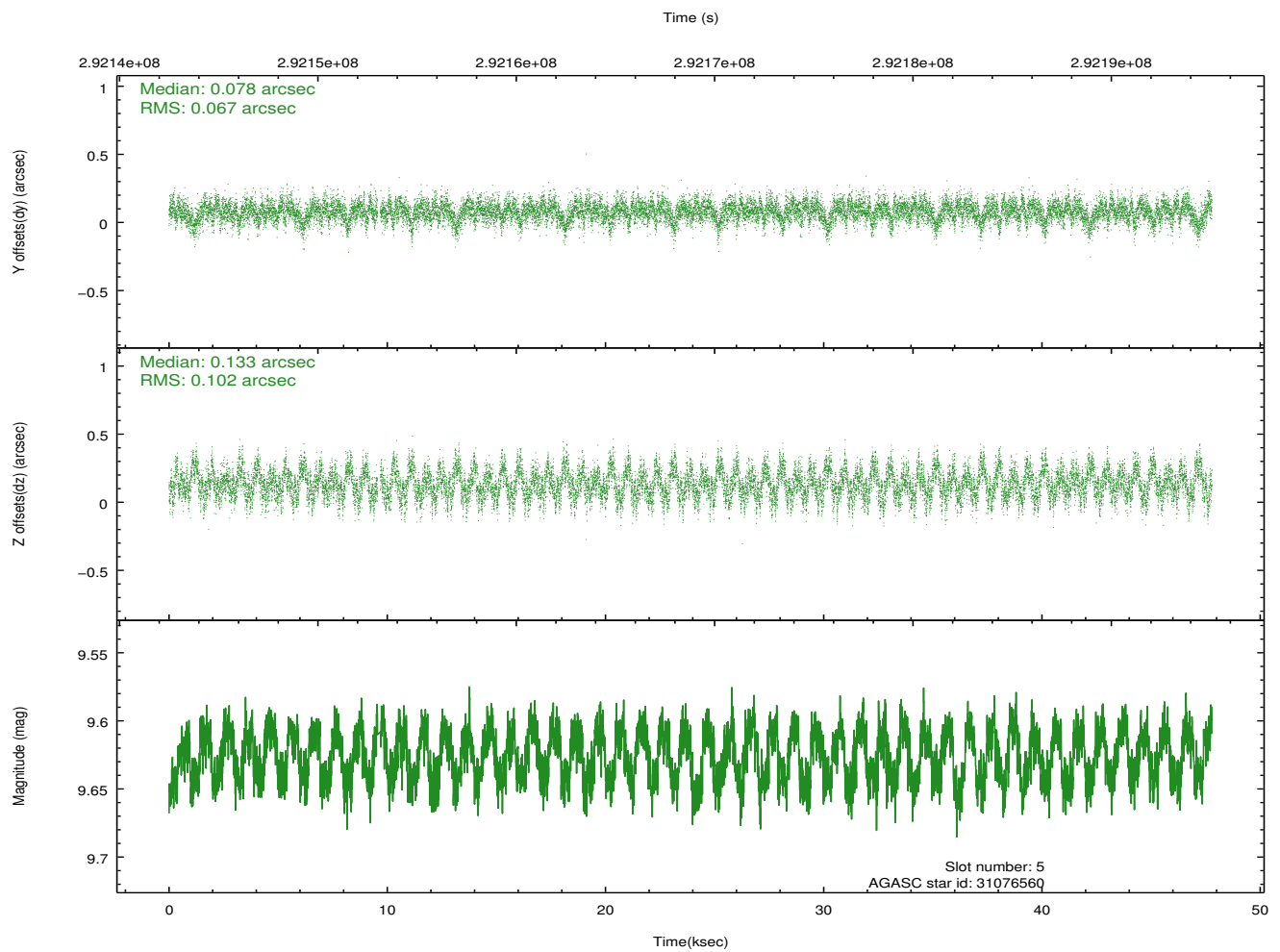
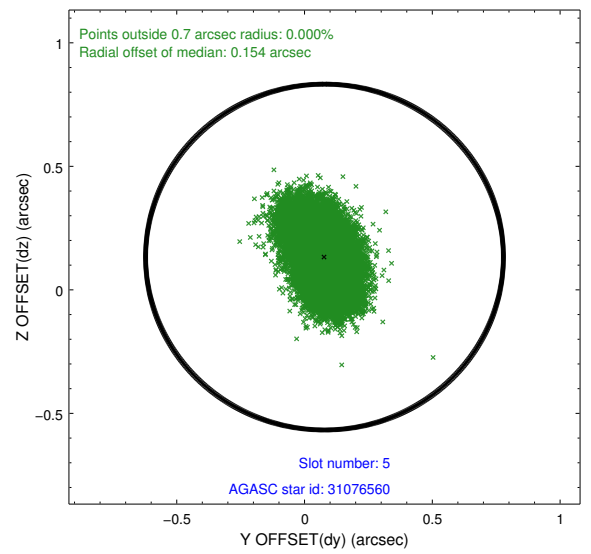
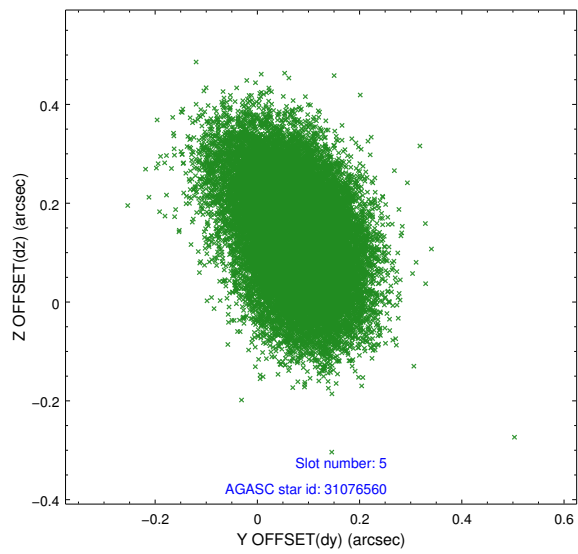
2.4.1 Slot 3



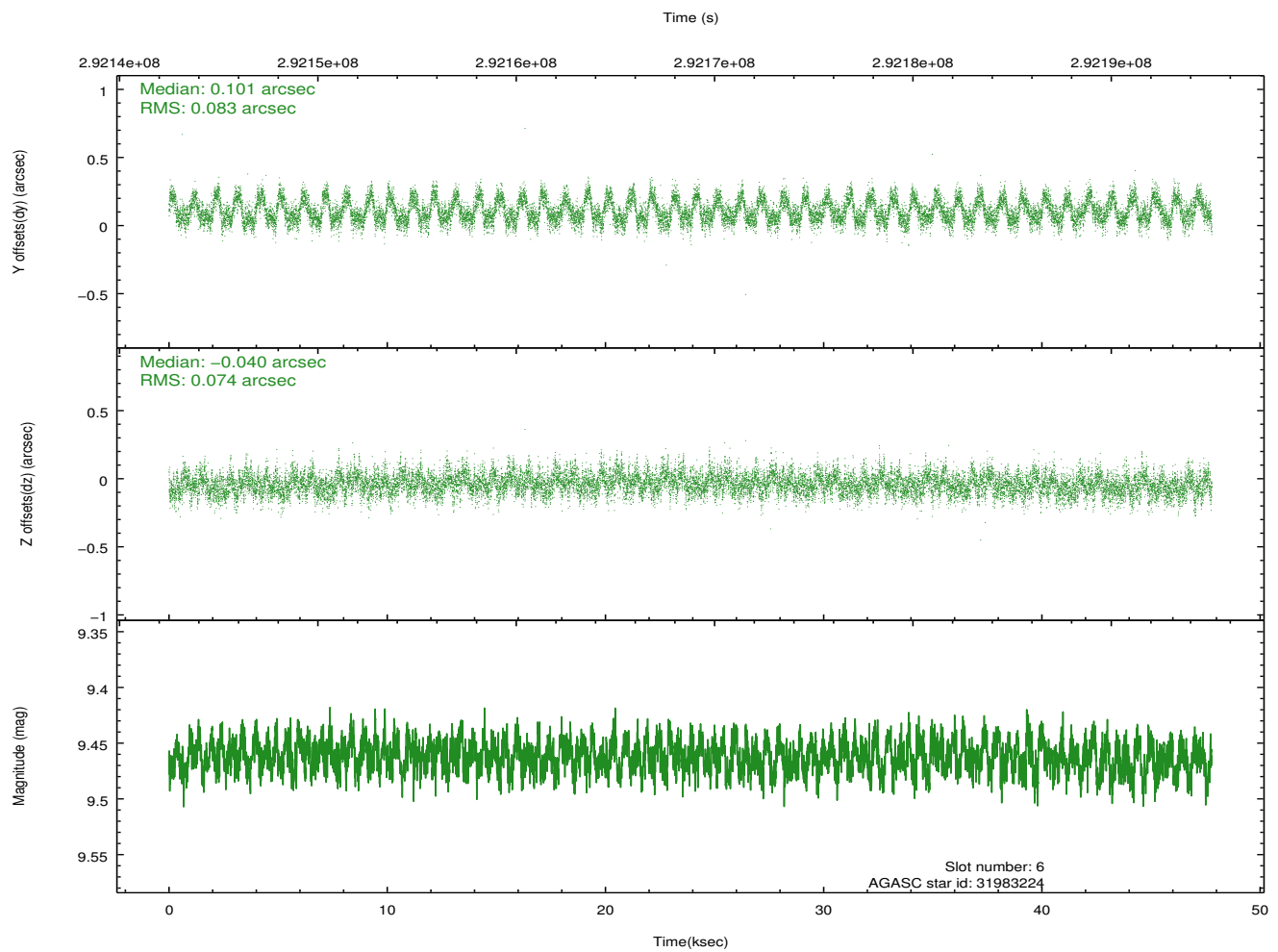
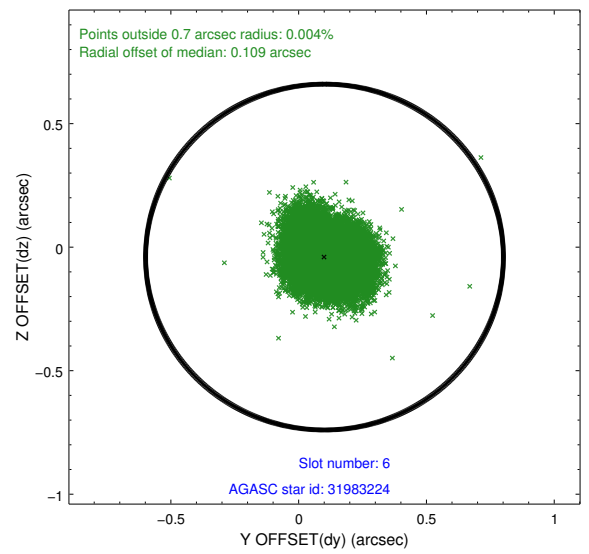
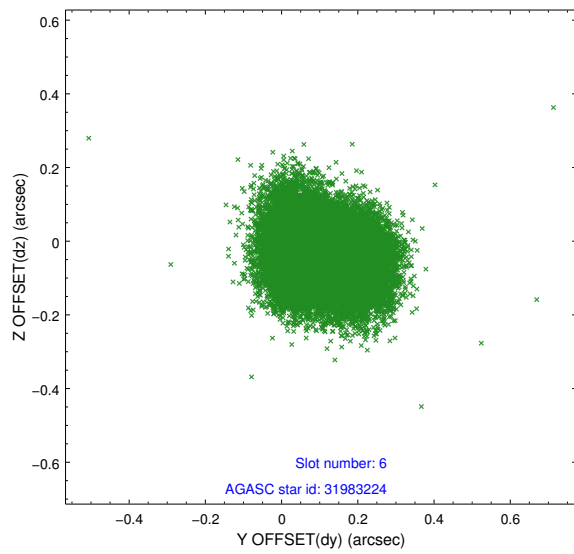
2.4.2 Slot 4



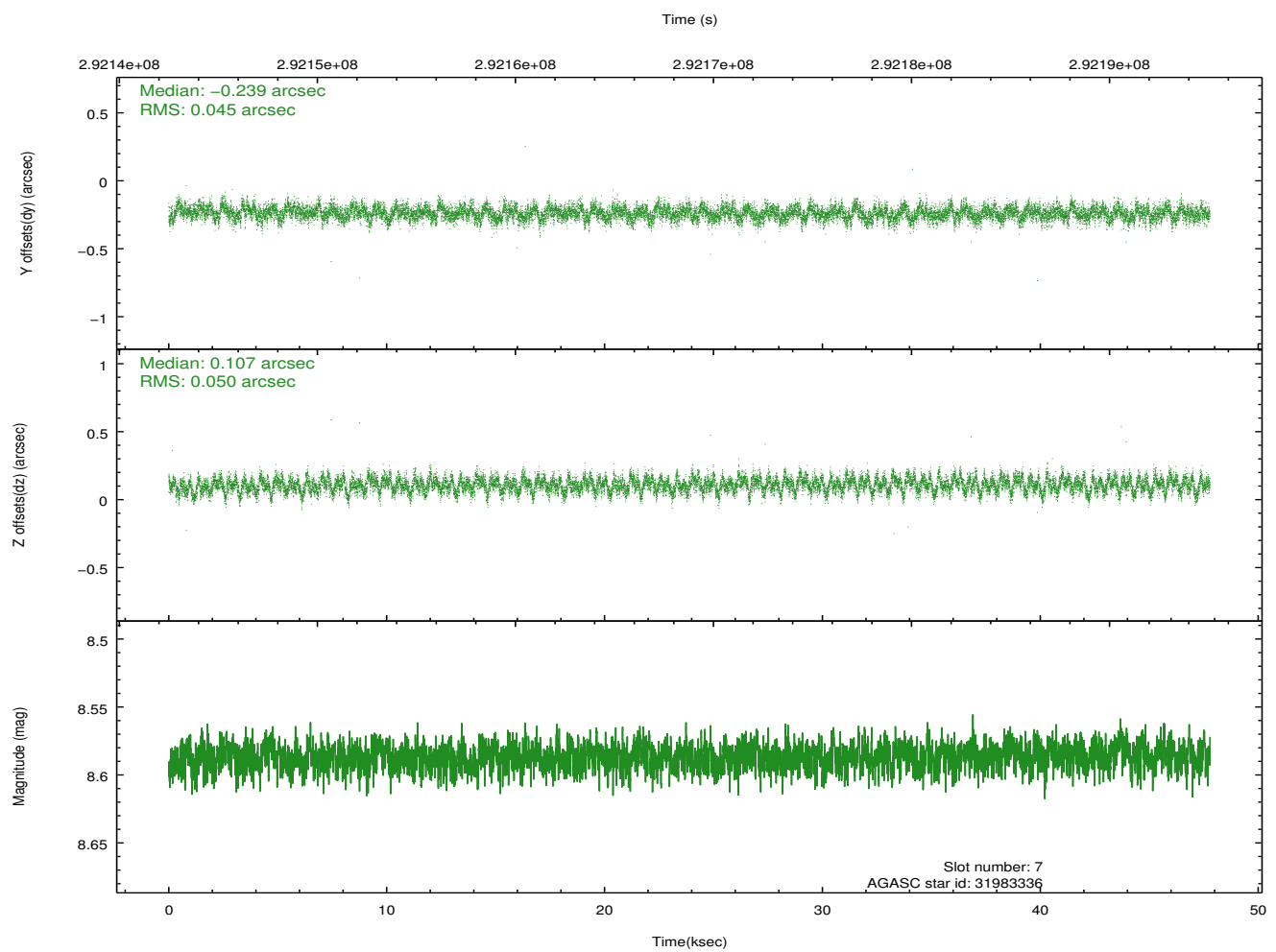
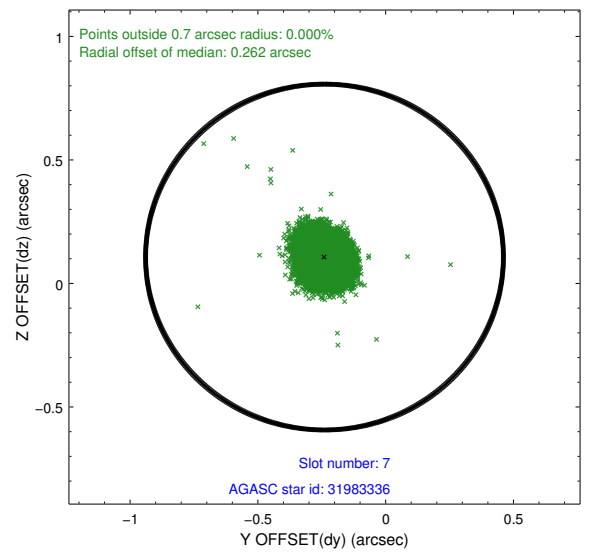
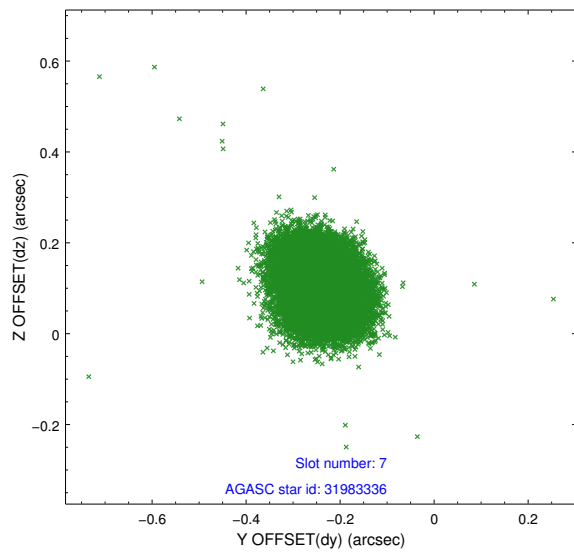
2.4.3 Slot 5



2.4.4 Slot 6

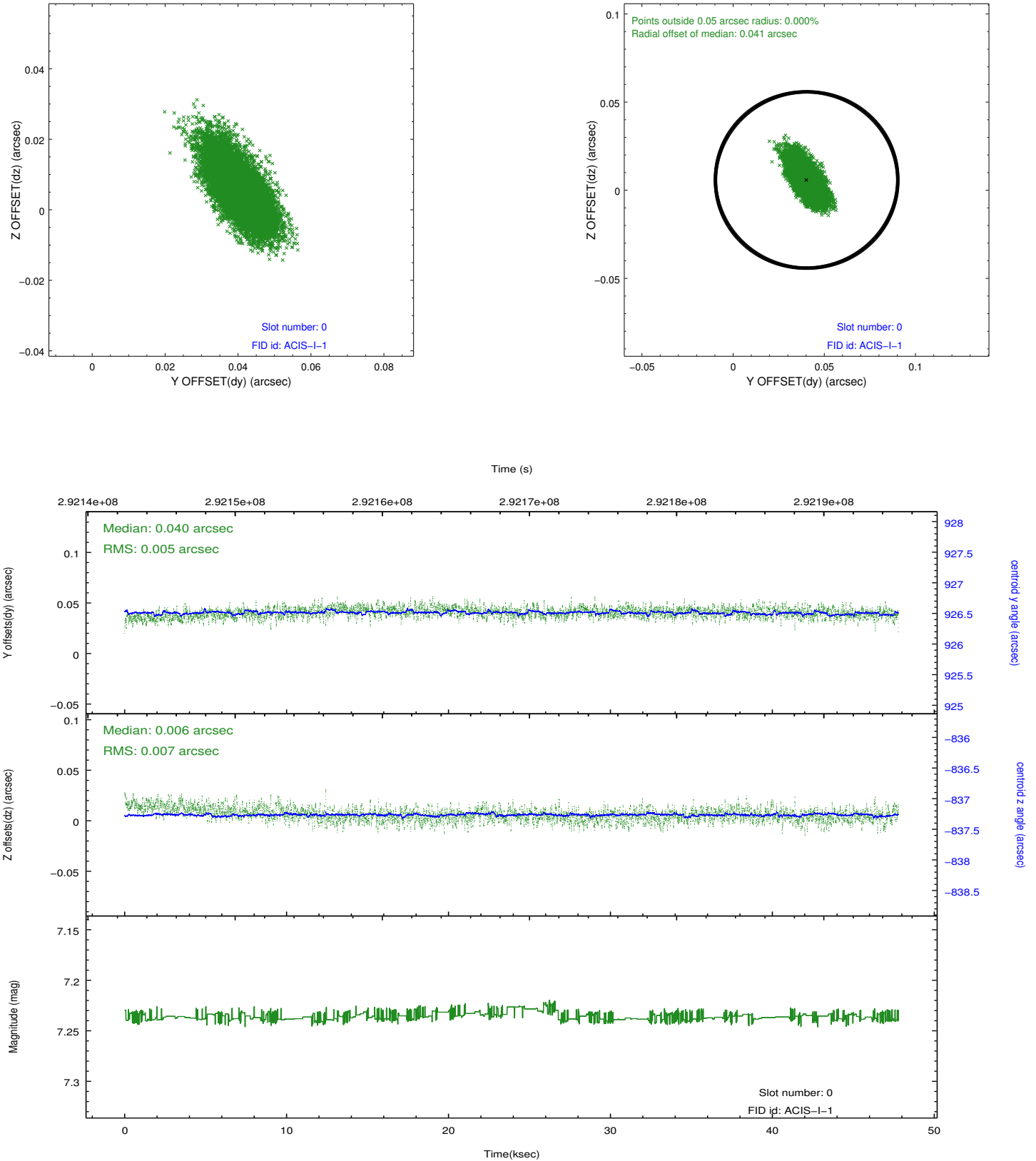


2.4.5 Slot 7

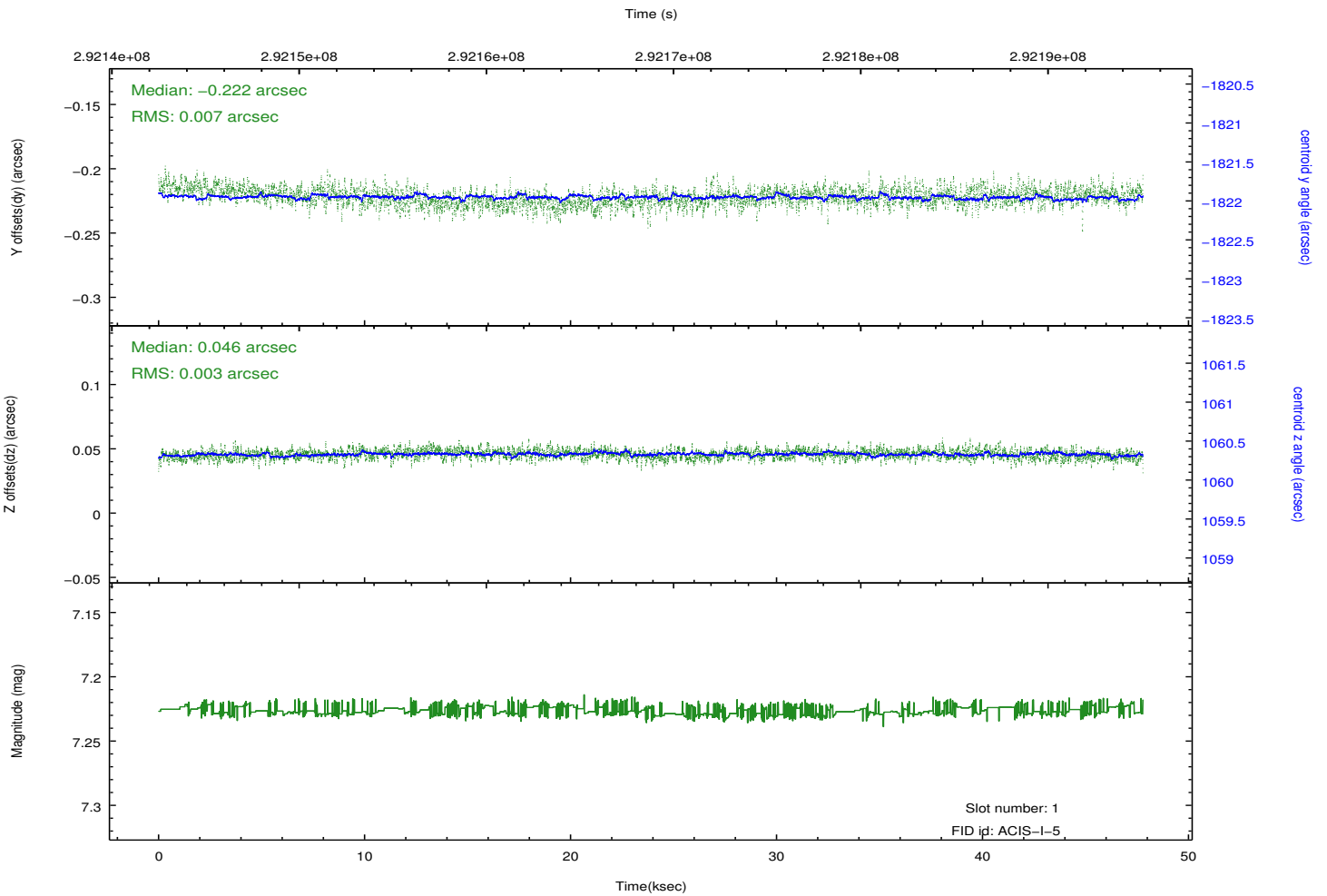
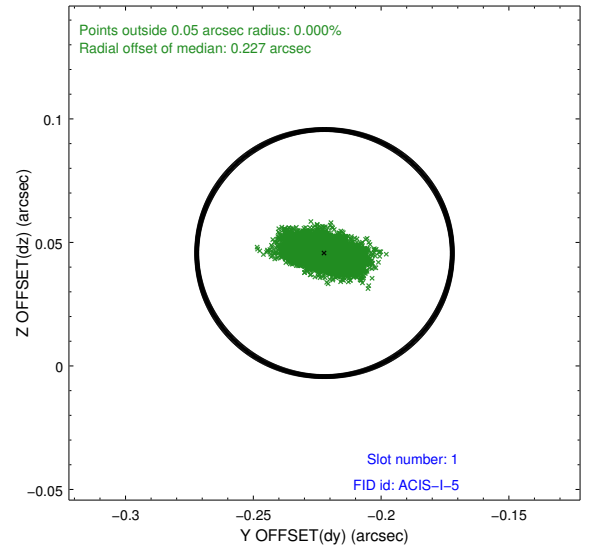
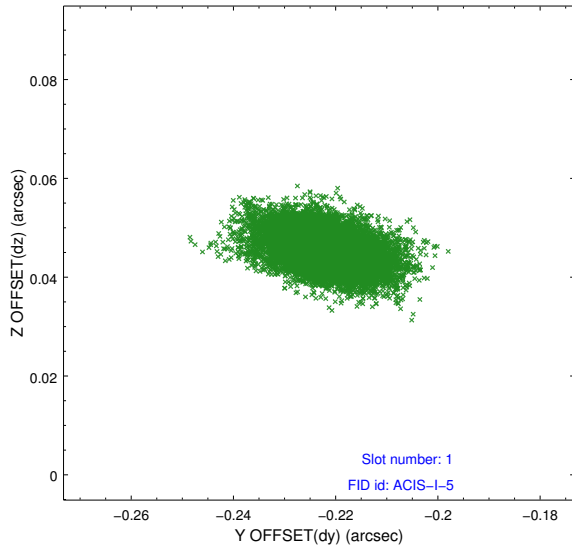


2.5 FID Slots

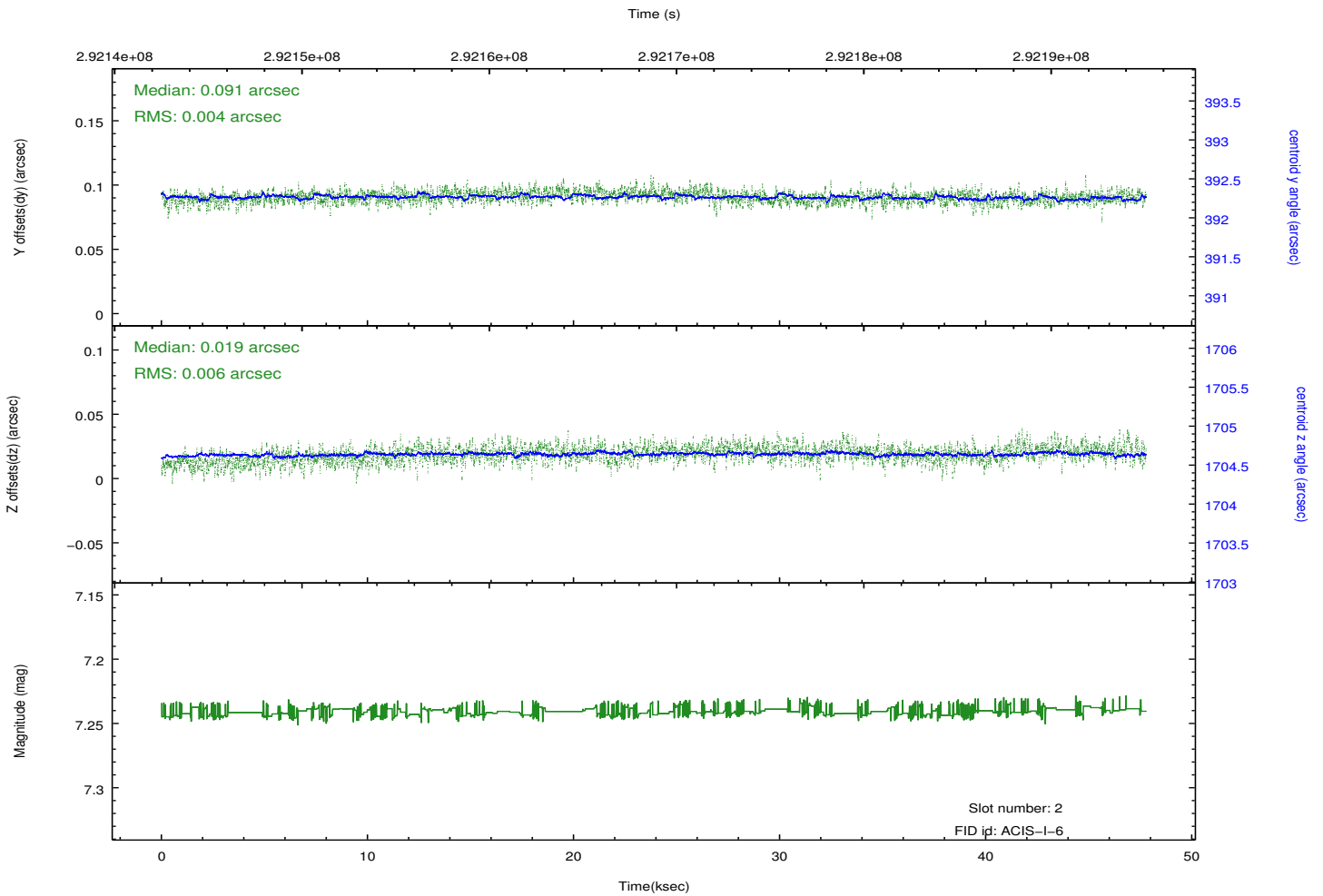
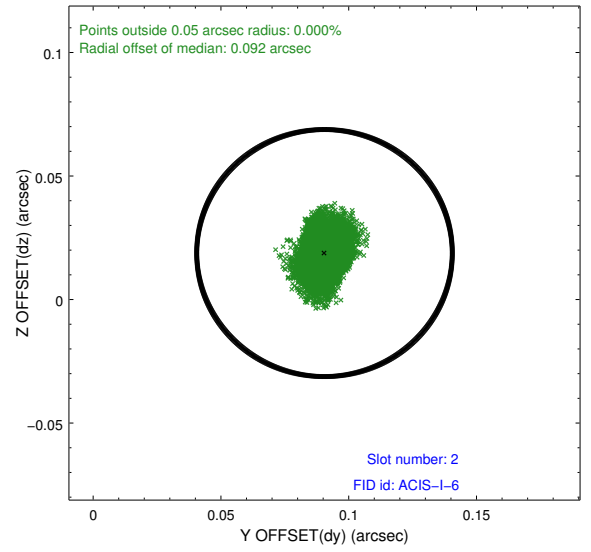
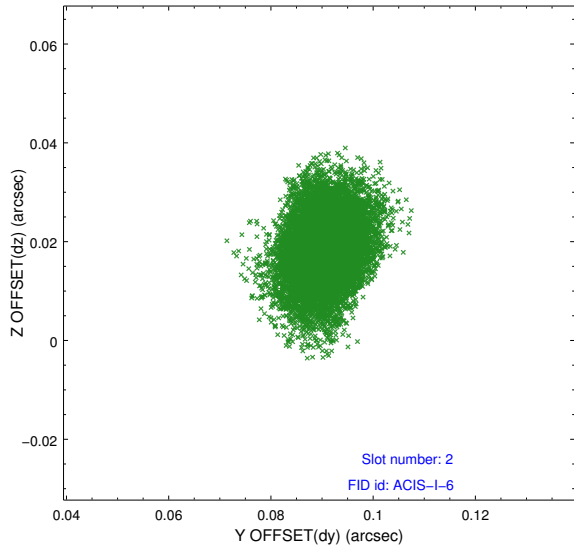
2.5.1 Slot 0



2.5.2 Slot 1



2.5.3 Slot 2



A Summary

A.1 Status

V&V Scientist	Beth Sundheim
V&V Date (YYYY-MM-DD)	2012.04.24
V&V Edition	1
V&V Disposition and Status	OK
V&V Charge Time	47.3567998

A.2 Comments