

V&V Reference Report

L2 ASCDS Version : 8.4.5

Observation 808 - L2 Version 4
Chandra X-Ray Center

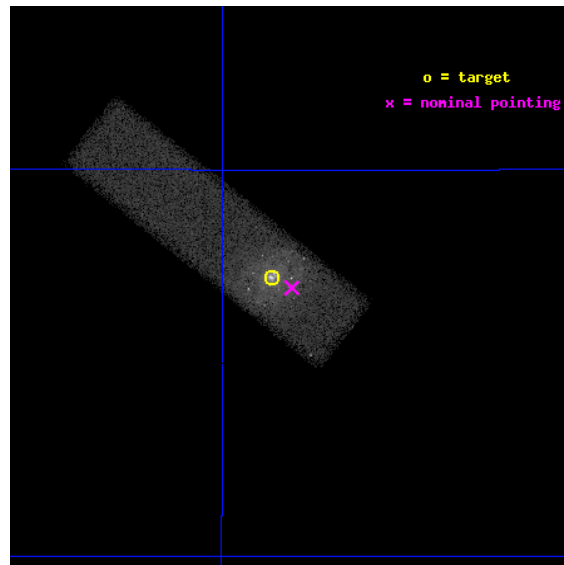
L2 Processing Date : Aug 27 2012

Contents

1	Front	2
2	OBI	3
2.1	OBI	3
2.1.1	Images	3
2.1.2	Bias	3
2.1.3	Parameters	4
2.1.4	Events	4
2.2	Compared Parameters	5
2.3	Aspect	6
2.4	Star Slots	9
2.4.1	Slot 3	9
2.4.2	Slot 4	10
2.4.3	Slot 5	11
2.4.4	Slot 6	12
2.4.5	Slot 7	13
2.5	FID Slots	14
2.5.1	Slot 0	14
2.5.2	Slot 1	15
2.5.3	Slot 2	16
A	Summary	17
A.1	Status	17
A.2	Comments	17

1 Front

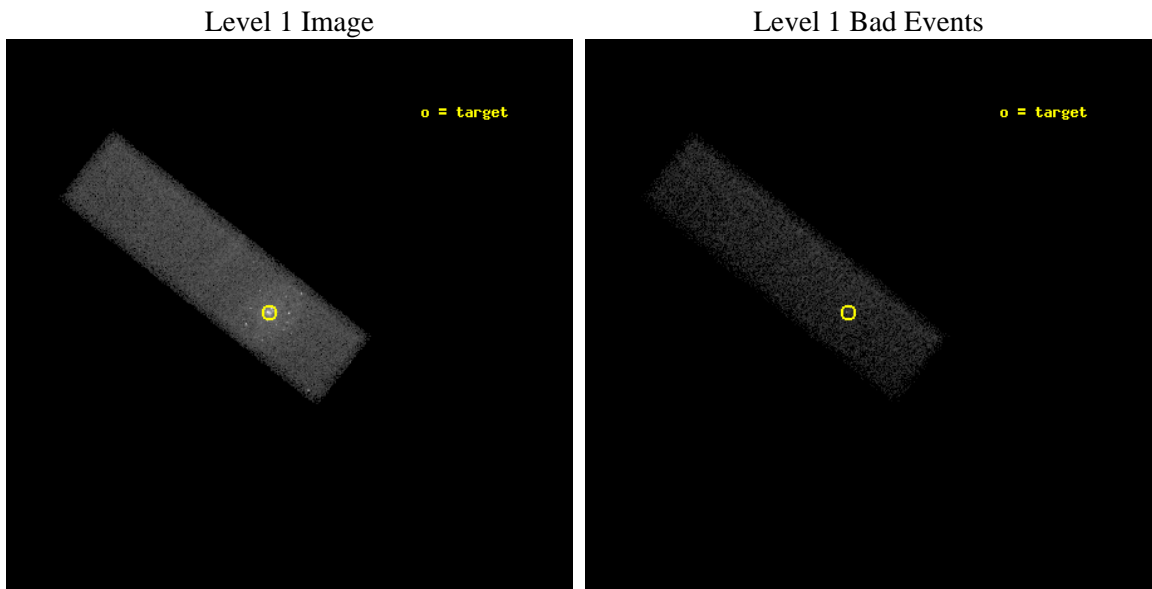
seq_num	700113	Sequence number
obs_id	808	Observation id
title	IN SEARCH OF THE CENTRAL ENGINES OF LINERS	Proposal title
observer	Prof. Michael Eracleous	Principal investigator
object	NGC 4736	Source name
dtycle	0	
cycle	P	events from which exps? Prim/Second/Both
ra_targ	192.72125	Observer's specified target RA [deg]
dec_targ	41.120472	Observer's specified target Dec [deg]
ra_nom	192.70950892744	Nominal RA [deg]
dec_nom	41.115779587042	Nominal Dec [deg]
roll_nom	218.4598529498	Nominal Roll [deg]
revision	4	Processing version of data
ontime	49798.358804405	Sum of GTIs [s]
lvetime	47368.361841915	Livetime [s]
ontime7	49798.358804405	Sum of GTIs [s]
l2events	81188	Number of level 2 events



2 OBI

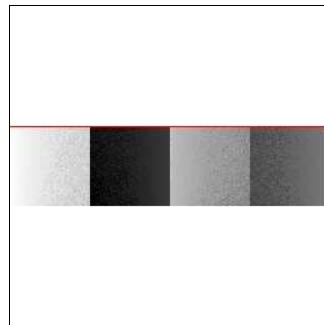
2.1 OBI

2.1.1 Images



2.1.2 Bias

Chip 7



2.1.3 Parameters

obi_num	1	Obi number	sched_exp_time	49650.000000	[s] Scheduled observation exposure time
ascdsver	8.4.5	Processing system revision	ontime	49798.358804405	Sum of GTIs [s]
caldbver	4.5.1.1	 	ontime7	49798.358804405	Sum of GTIs [s]
date	2012-08-27T19:42:09	Date and time of file creation	l1events	142864	Number of level 1 events
revision	4	Processing version of data			

2.1.4 Events

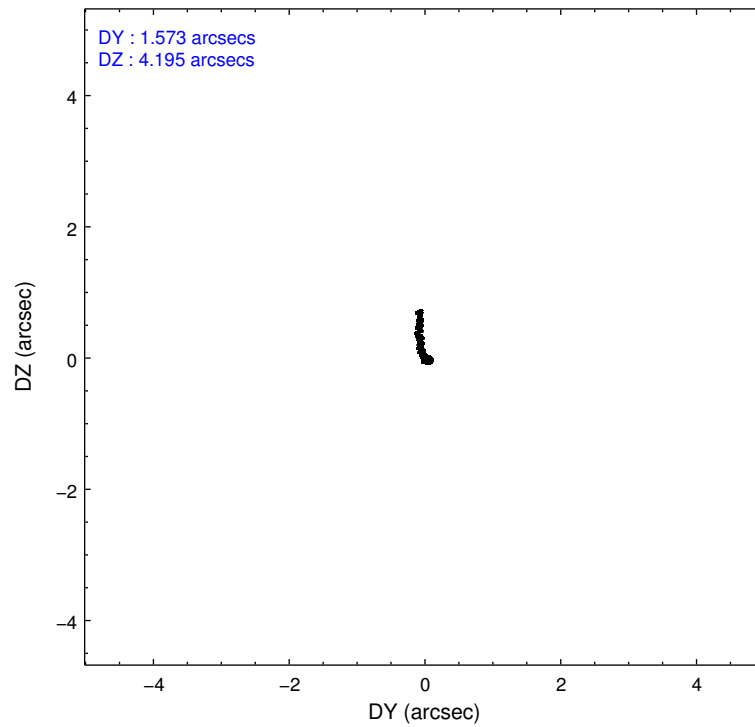
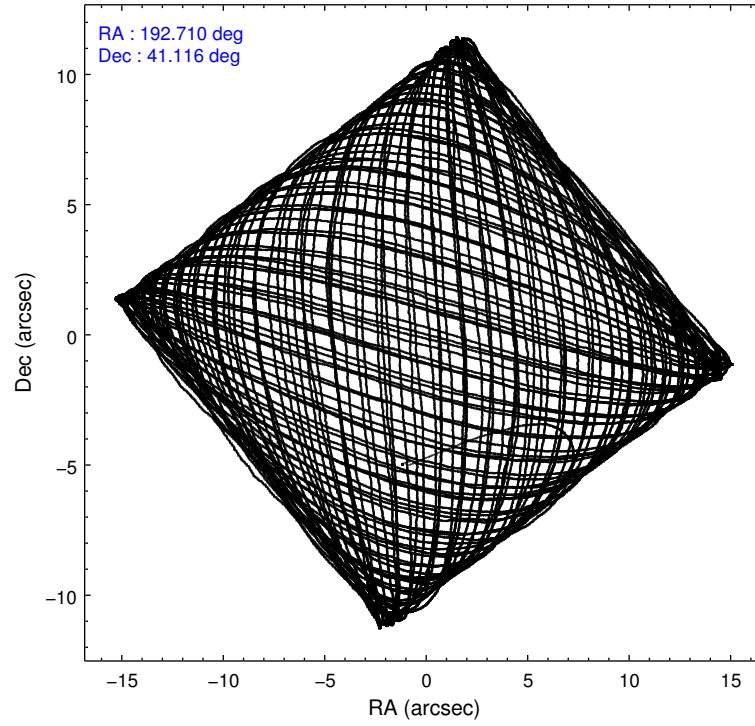
	ccd 7
level 1 events	142864
rejected events	59792
rejected %	41%

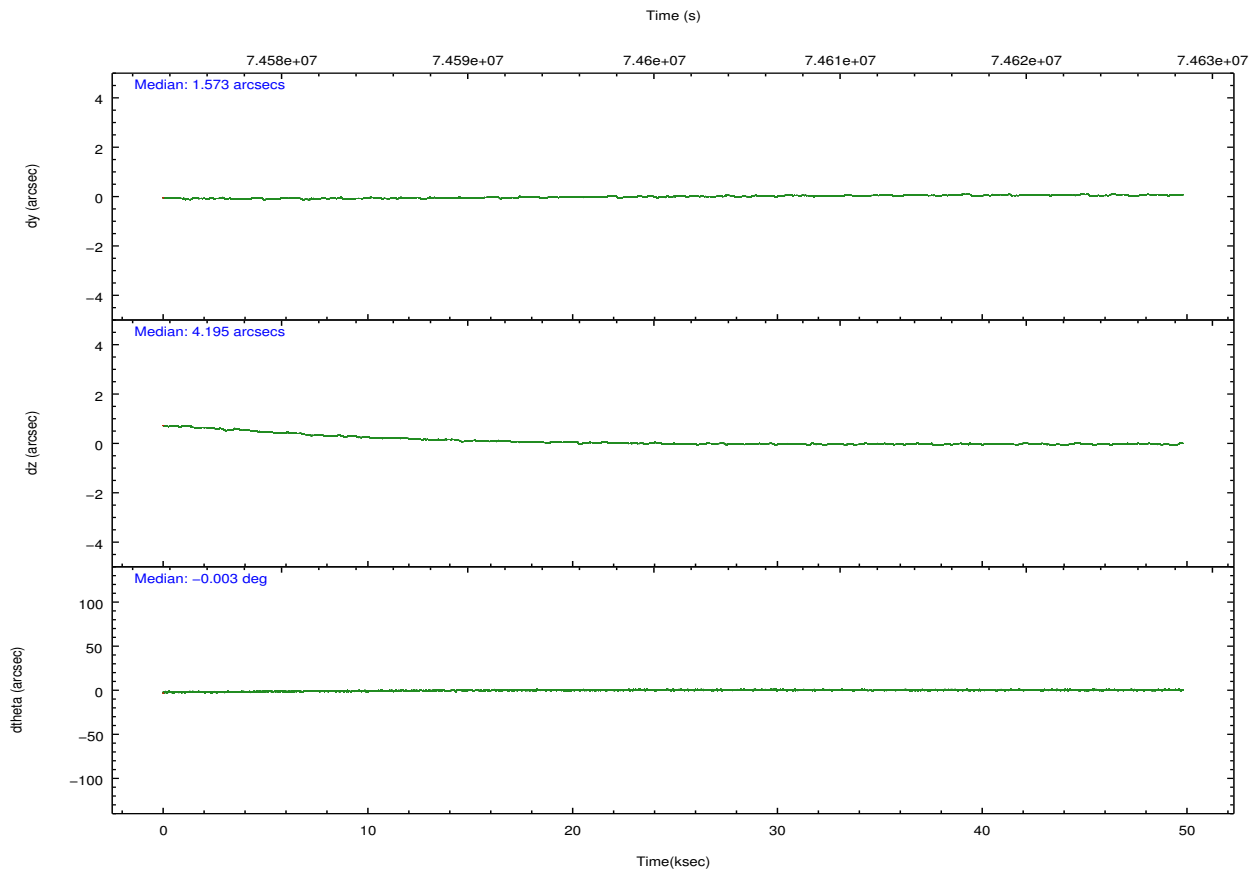
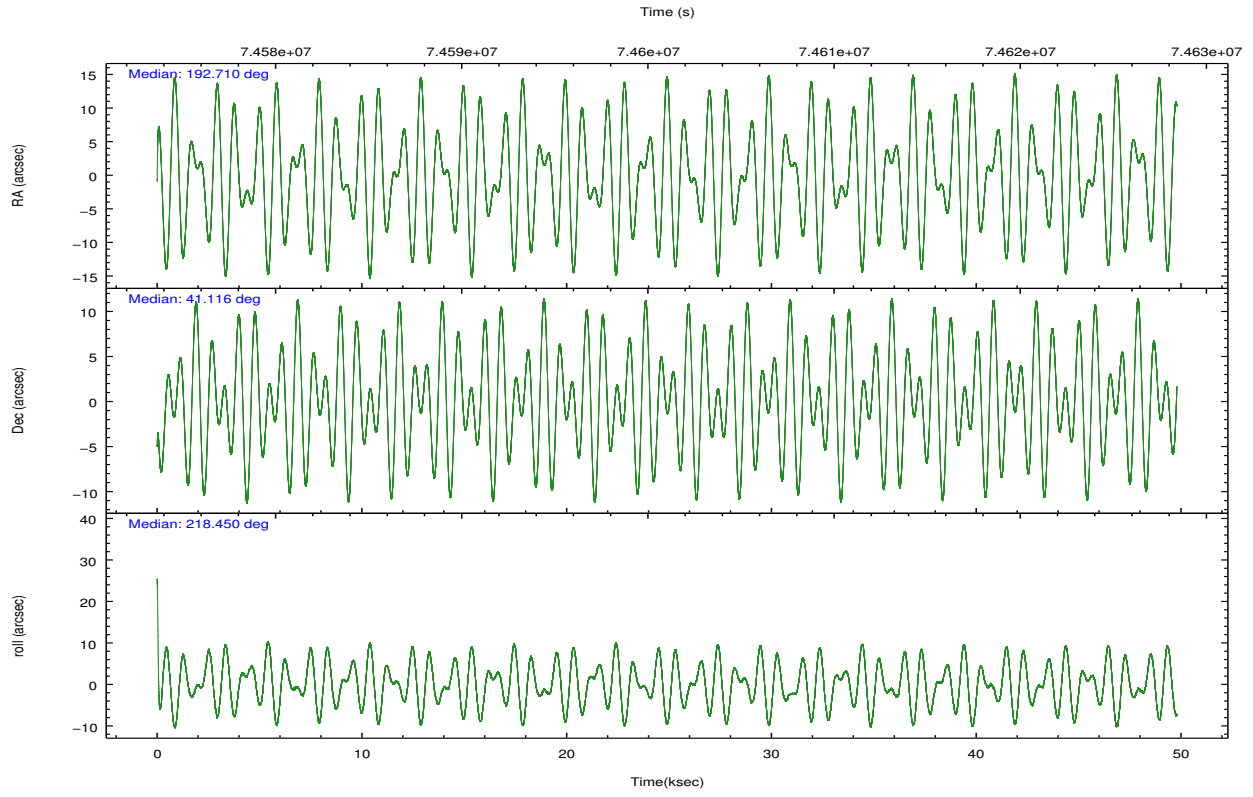
	ccd 7
grade 0 events	19010
	13%
grade 1 events	128
	0%
grade 2 events	18134
	12%
grade 3 events	9720
	6%
grade 4 events	9591
	6%
grade 5 events	10532
	7%
grade 6 events	28102
	19%
grade 7 events	47647
	33%

2.2 Compared Parameters

Parameter	Planned	Actual	Parameter	Planned	Actual
Instrument	ACIS	ACIS	Obspar format version number	7	7
Detector	ACIS-7	ACIS-7	Obspar file type	PREDICTED	ACTUAL
Grating	NONE	NONE	Obspar update status	NONE	UPDATED
Data mode	VFAINT	VFAINT	Number of optional ACIS chips dropped	0	0
Observation mode	POINTING	POINTING	On-chip summing requested	N	N
[deg] Pointing RA	192.722773	192.7095089274415	Subarray requested	CUSTOM	CUSTOM
[deg] Pointing Dec	41.141347	41.11577958704196	Subarray start row	385	385
[deg] Pointing Roll	218.294496	218.4598529498016	Subarray row count	255	255
[mm] SIM focus pos	-0.684267	-0.6828225247311905	Alternating exposures requested	N	N
[mm] SIM defocus	0	0.001444936568705701	[s] Primary exposure time	0.000000	0.8
[mm] SIM translation stage pos	-190.132523	-190.1400660498719			
[mm] SIM translation stage offset	0	0.00754346686406393			
[s] Observation start time (MET)	74576280.184000	74574731.85934401			
Observation start date	2000-05-13T03:36:56	2000-05-13T03:12:11			
[s] Observation end time (MET)	74625930.184000	74626575.33624899			
Observation end date	2000-05-13T17:24:26	2000-05-13T17:36:15			
Read mode	TIMED	TIMED			

2.3 Aspect



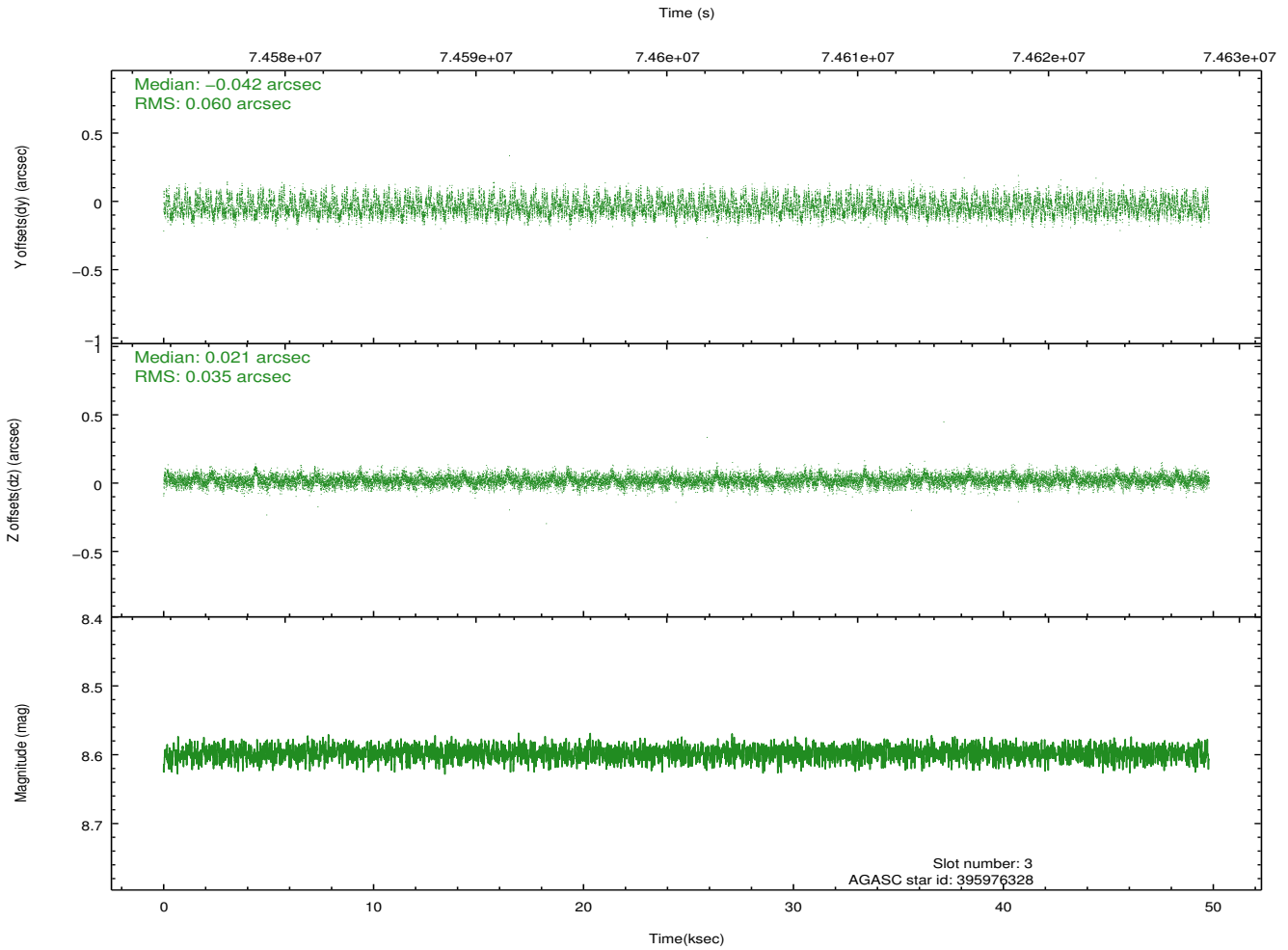
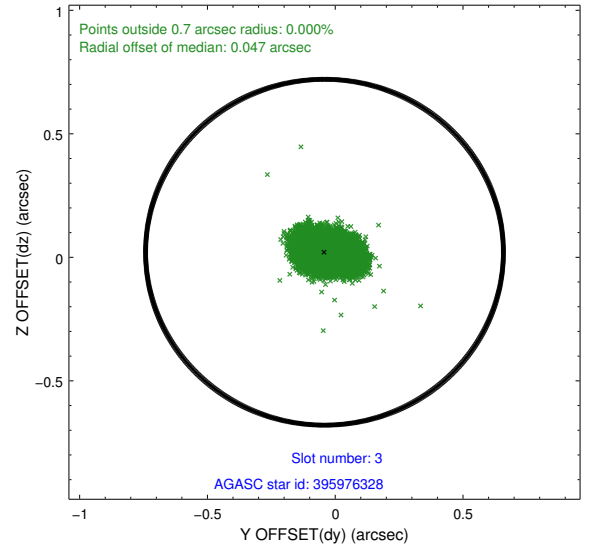
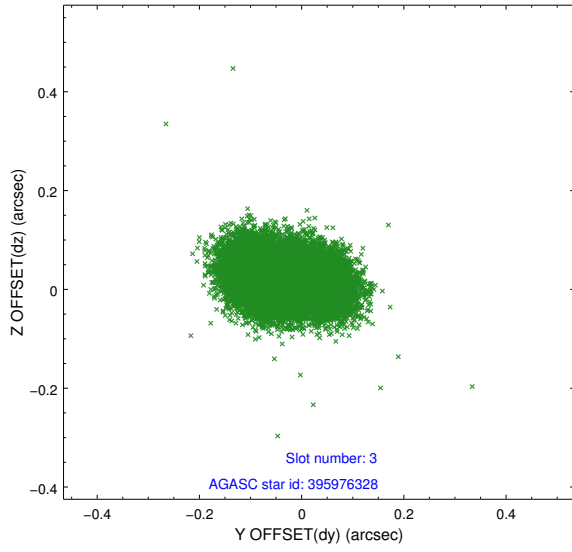


Slot Statistics

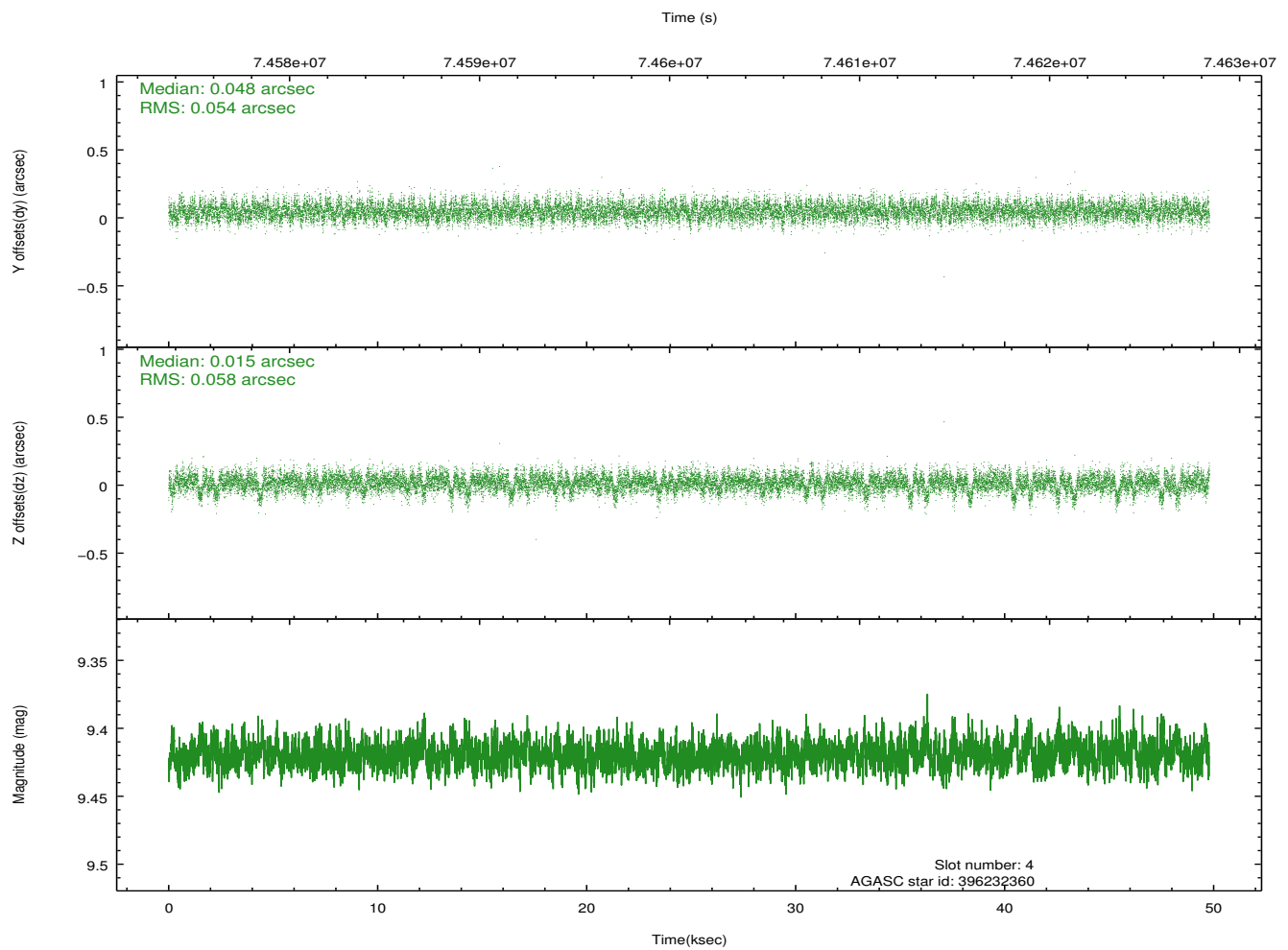
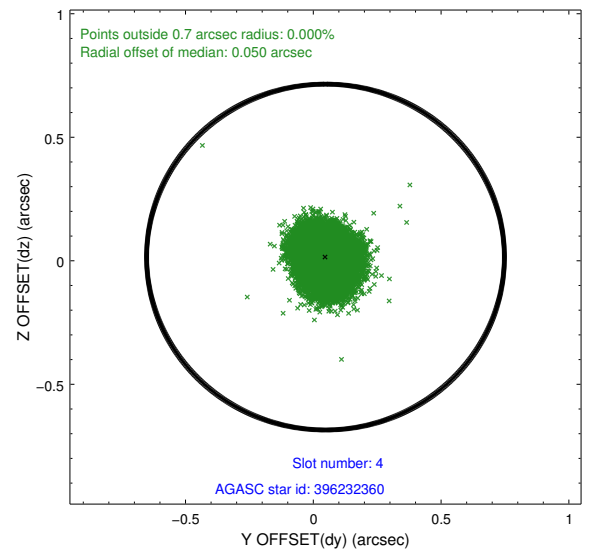
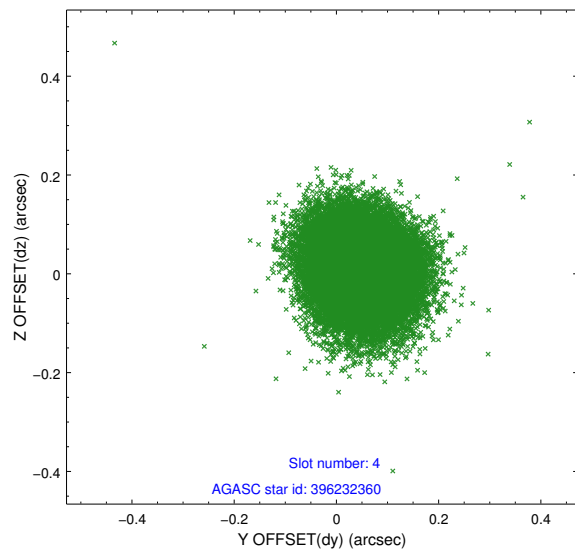
slot	status	id	mag	n_pts	med_dy	med_dz	dr1	dr2	ra	dec	mean_y	mean_z
0	FID	ACIS-S-2	7.10	12147	-0.018	-0.010	0.008	0.015	0.000000	0.000000	-754.20	-1725.40
1	FID	ACIS-S-4	7.21	12145	-0.007	0.012	0.006	0.010	0.000000	0.000000	2159.11	183.10
2	FID	ACIS-S-5	7.24	12146	-0.006	0.007	0.008	0.015	0.000000	0.000000	-1807.04	176.78
3	GUIDE	395976328	8.60	24286	-0.042	0.021	0.074	0.119	193.402586	40.890368	-896.99	1849.92
4	GUIDE	396232360	9.42	24276	0.048	0.015	0.084	0.136	192.726371	41.259126	-270.37	-326.63
5	GUIDE	395977376	9.43	24213	0.043	0.096	0.090	0.148	192.809994	40.775894	628.35	1180.08
6	GUIDE	396230808	9.88	24267	-0.093	-0.022	0.091	0.148	192.949012	41.691820	-1705.83	-1179.25
7	GUIDE	396249736	10.02	24260	0.044	-0.107	0.132	0.207	191.944881	41.503423	832.80	-2330.01

2.4 Star Slots

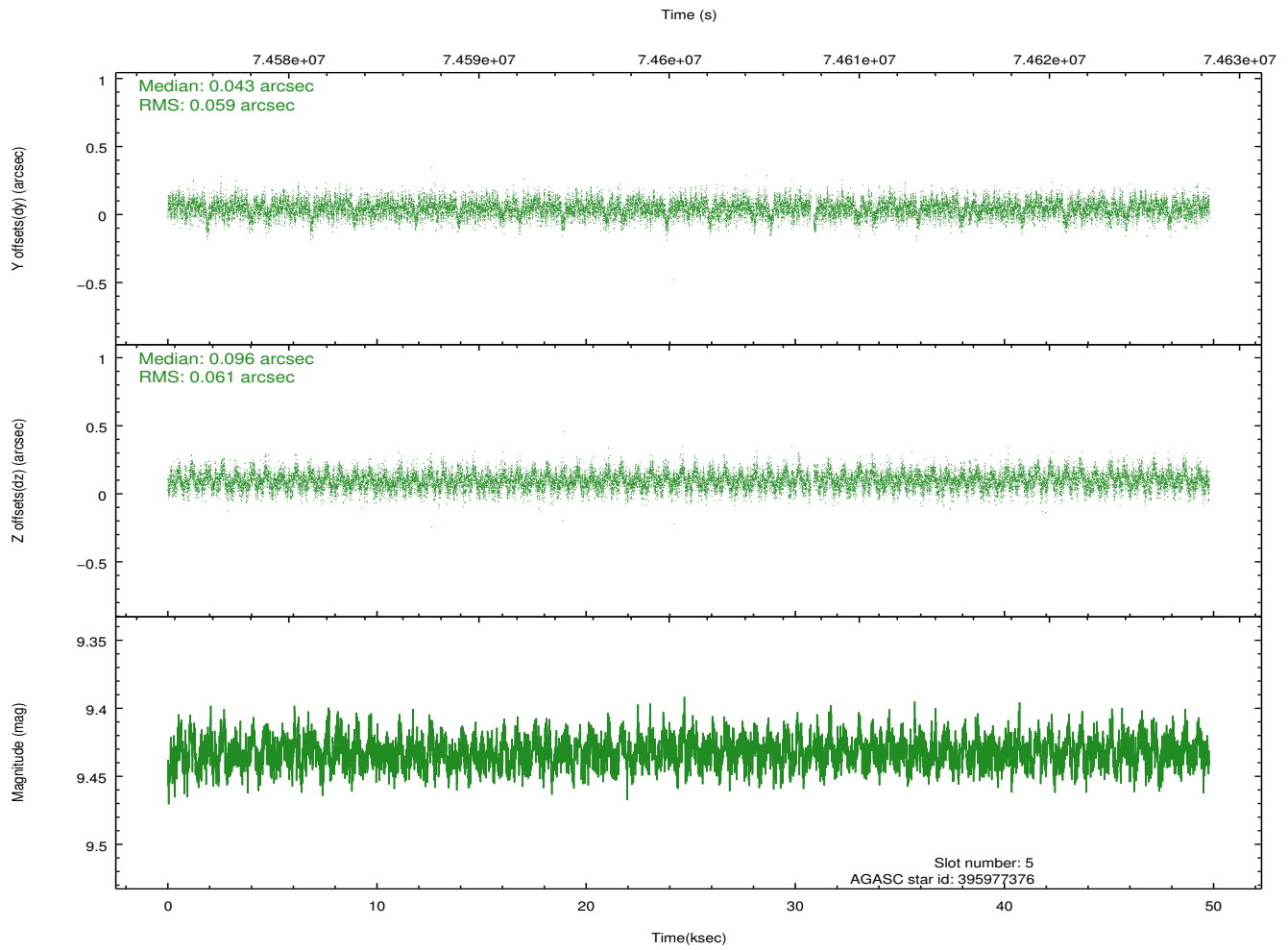
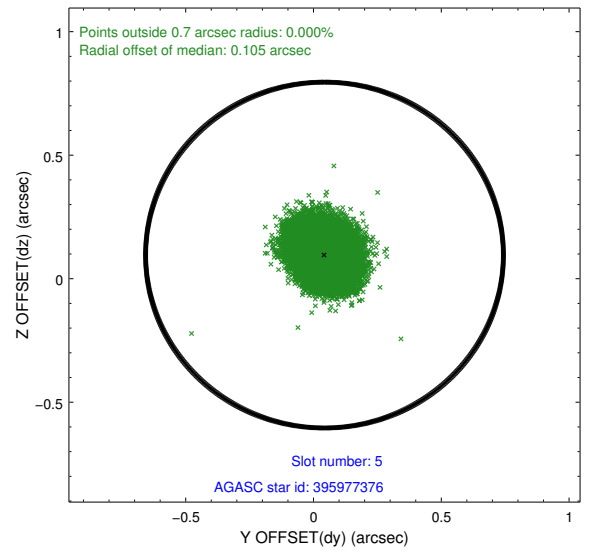
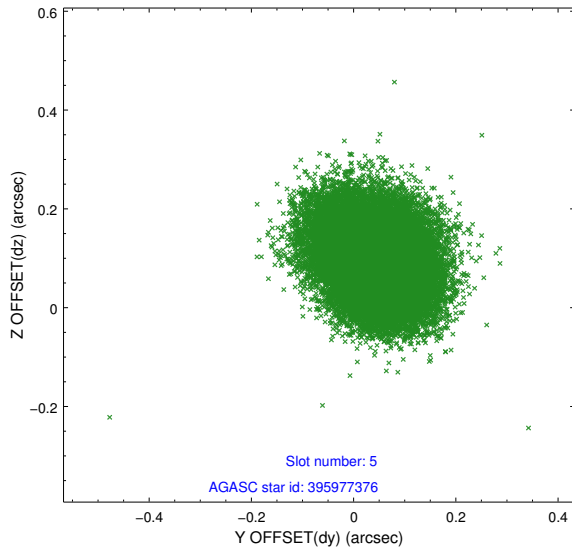
2.4.1 Slot 3



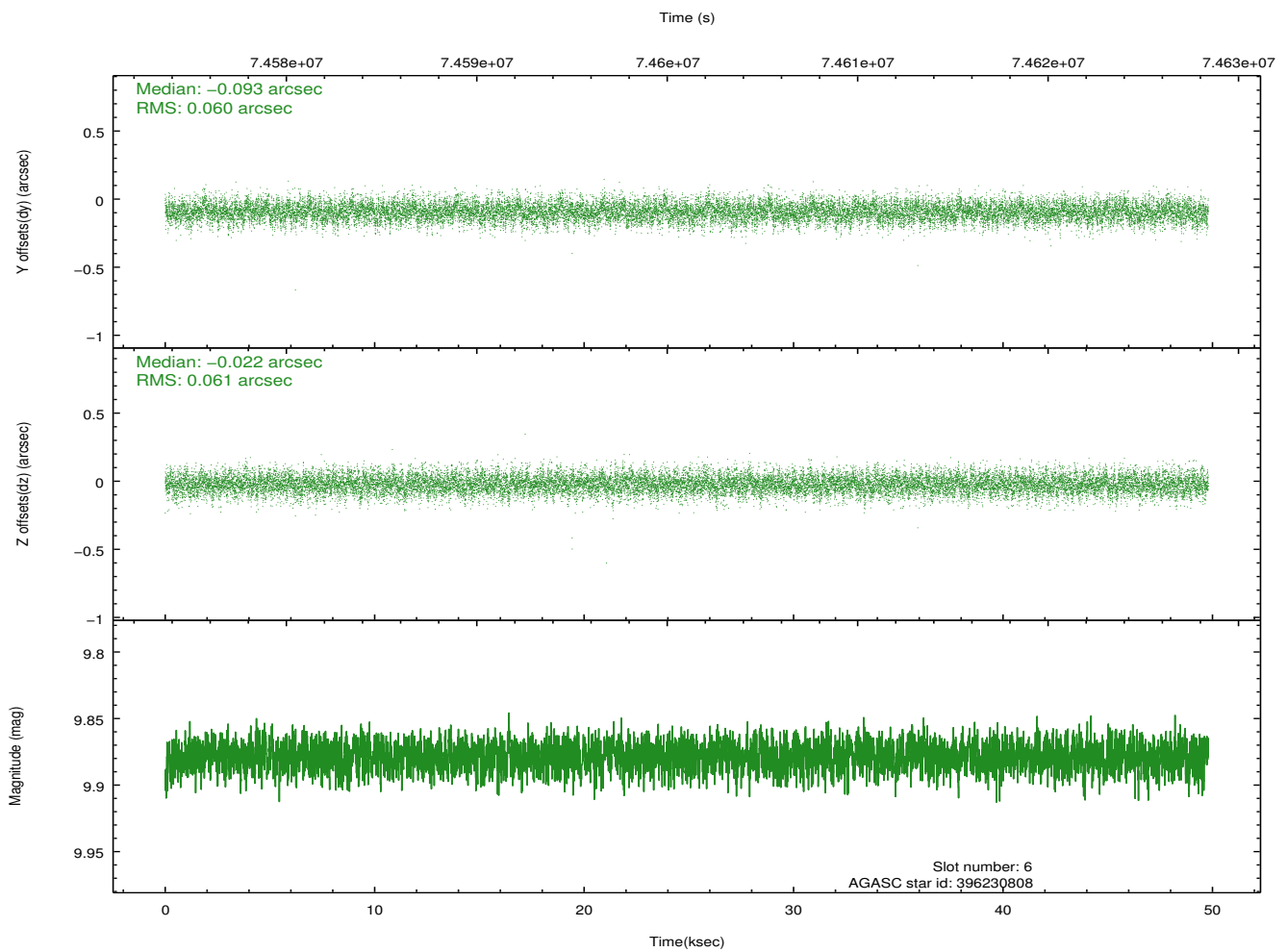
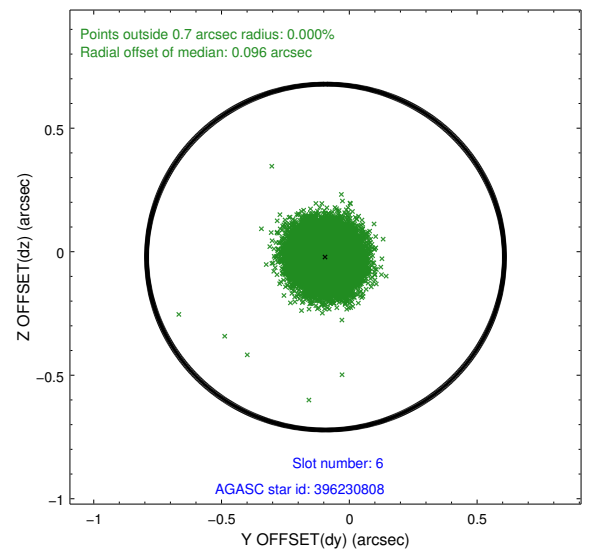
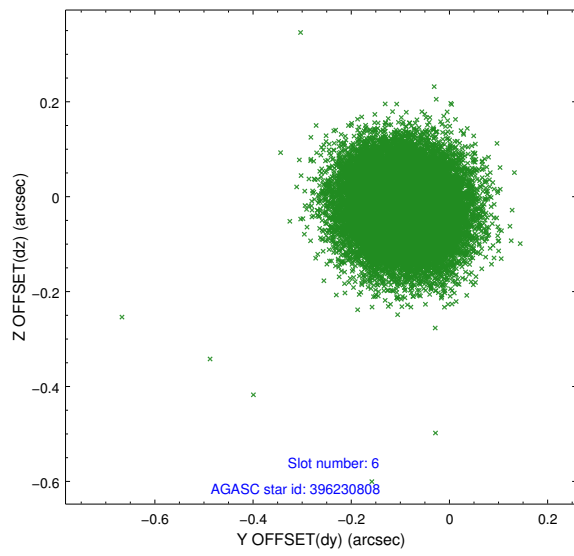
2.4.2 Slot 4



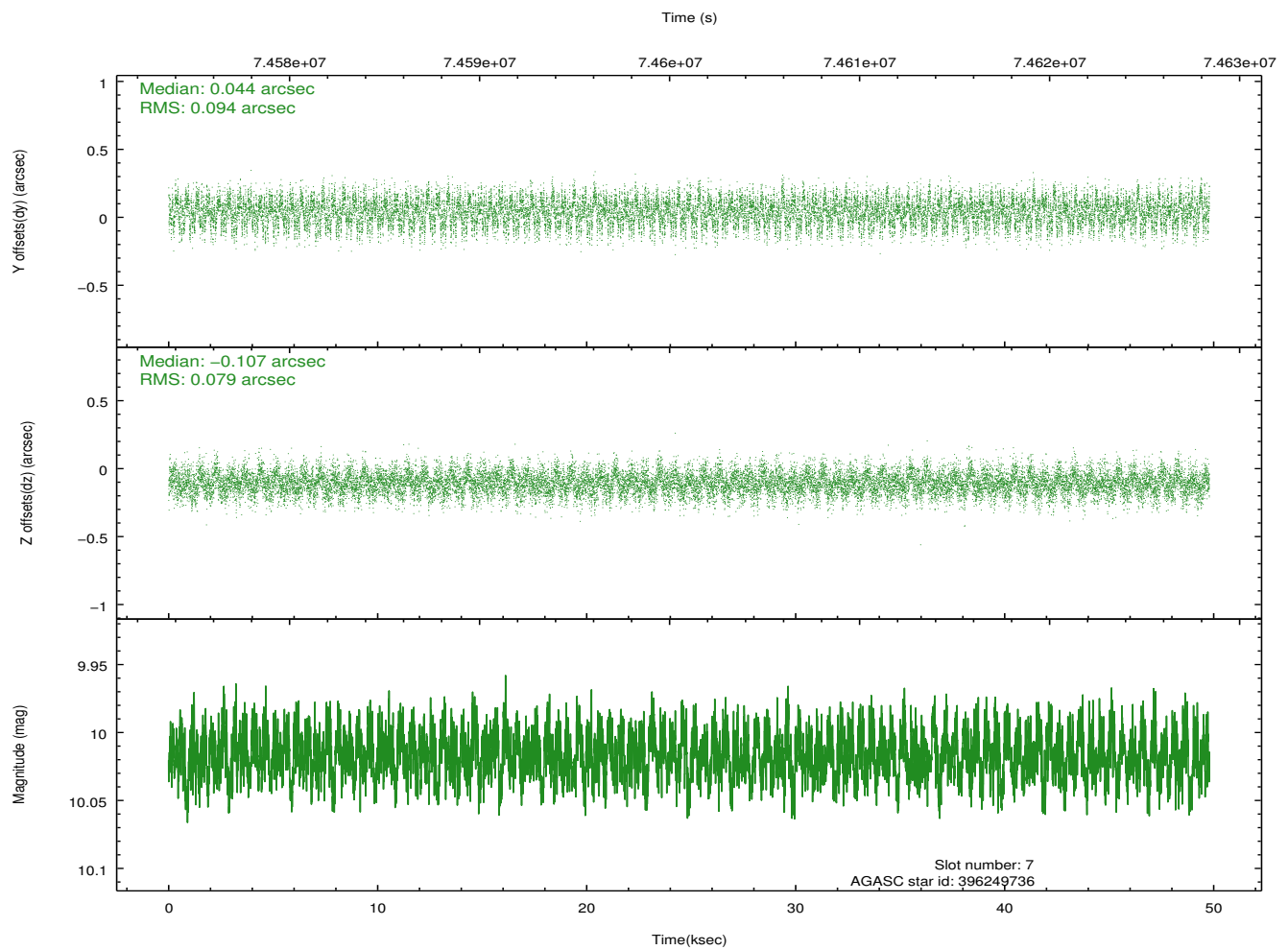
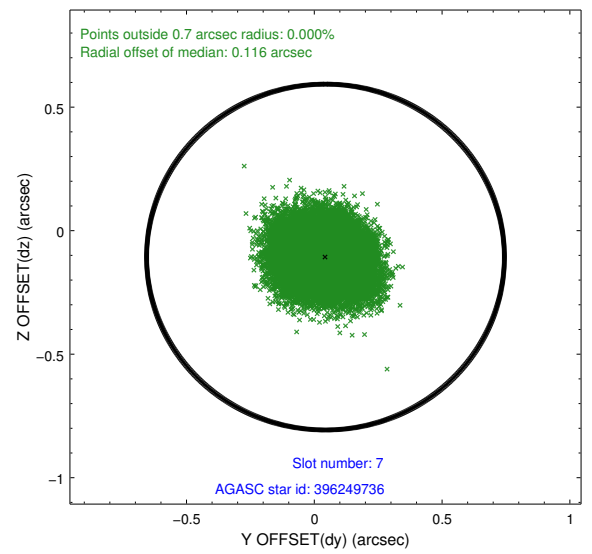
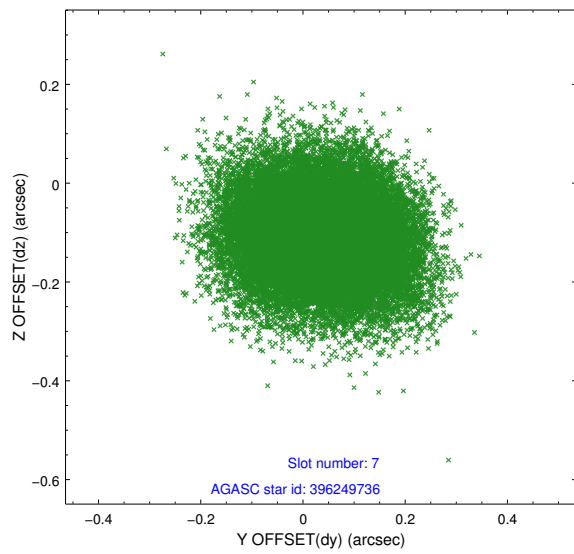
2.4.3 Slot 5



2.4.4 Slot 6

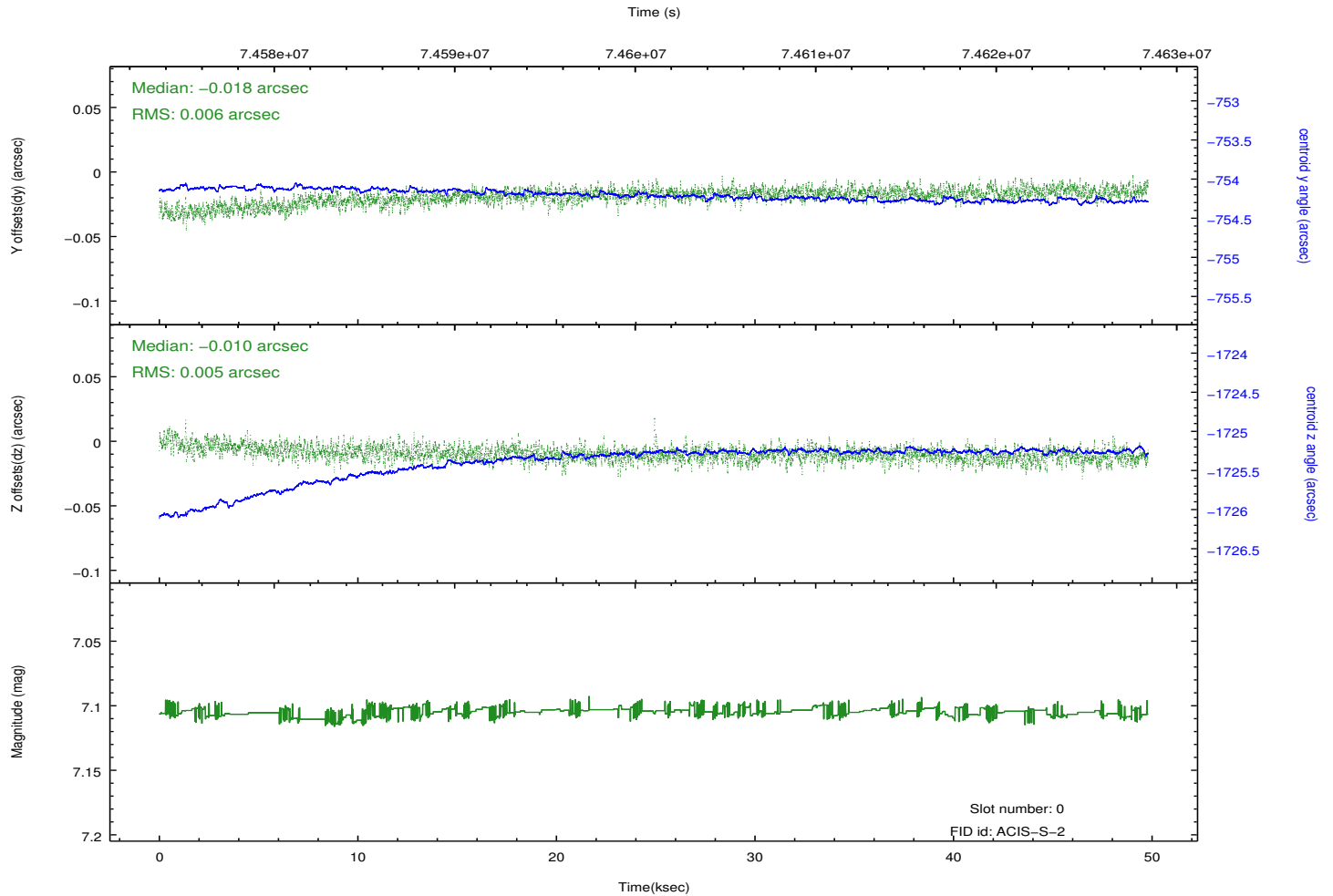
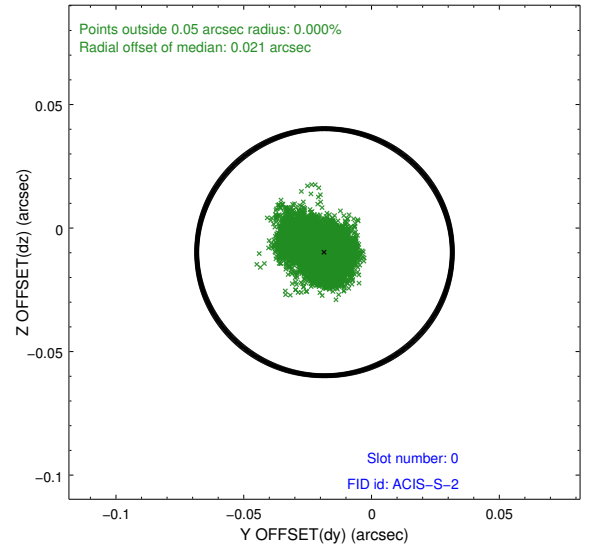
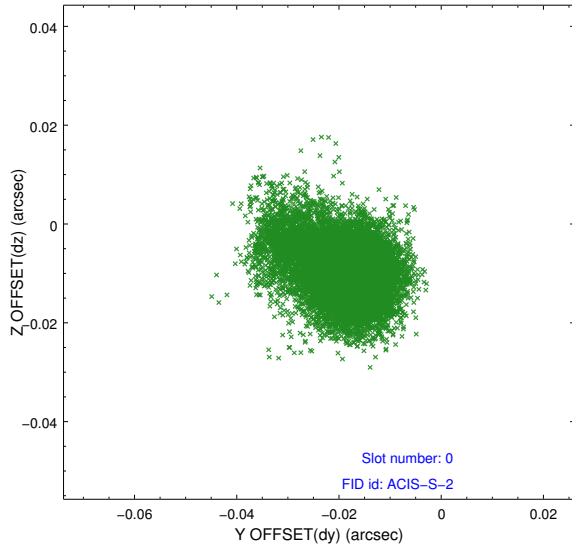


2.4.5 Slot 7

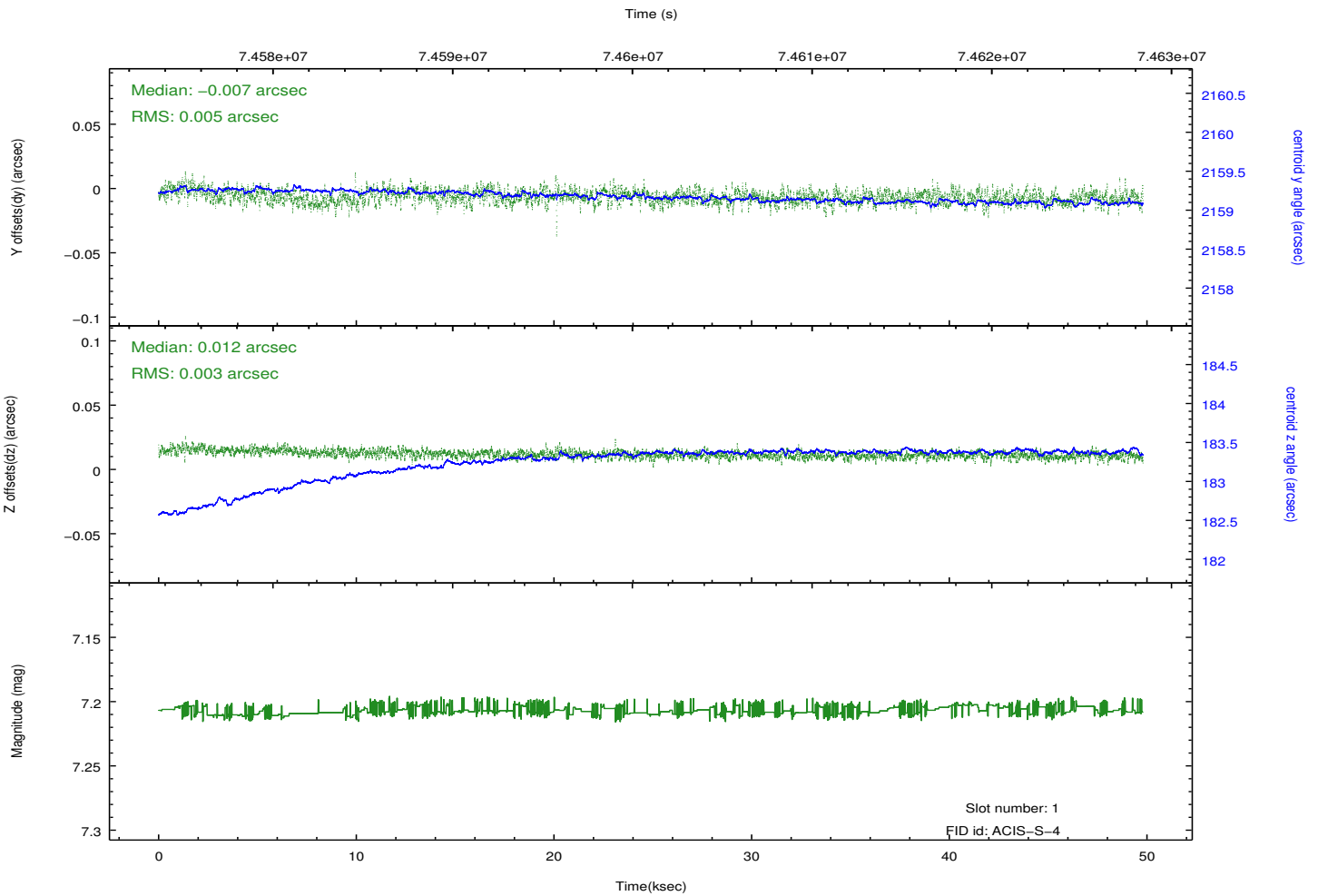
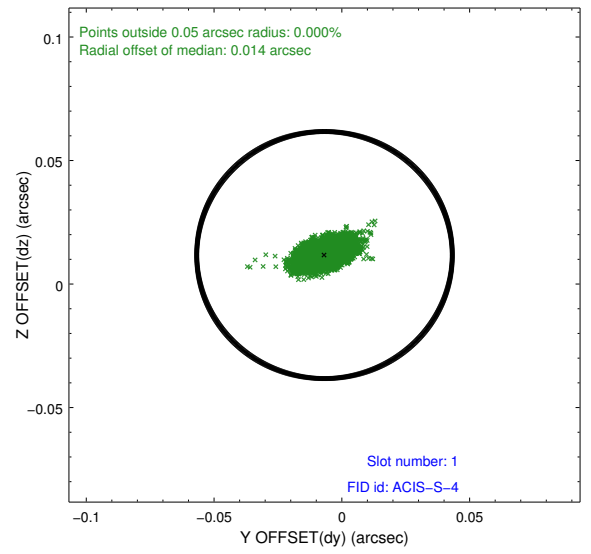
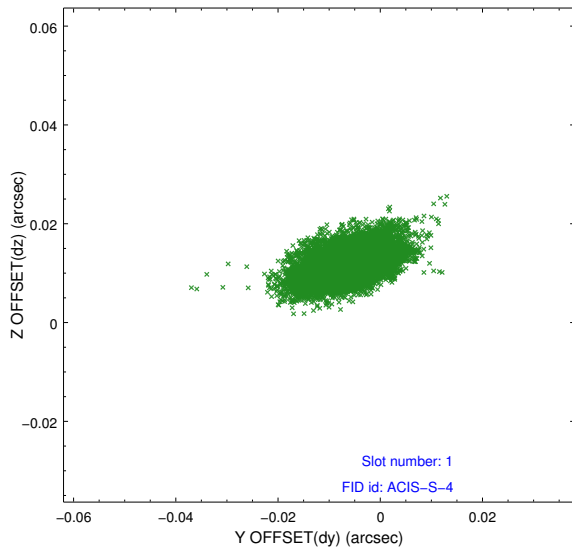


2.5 FID Slots

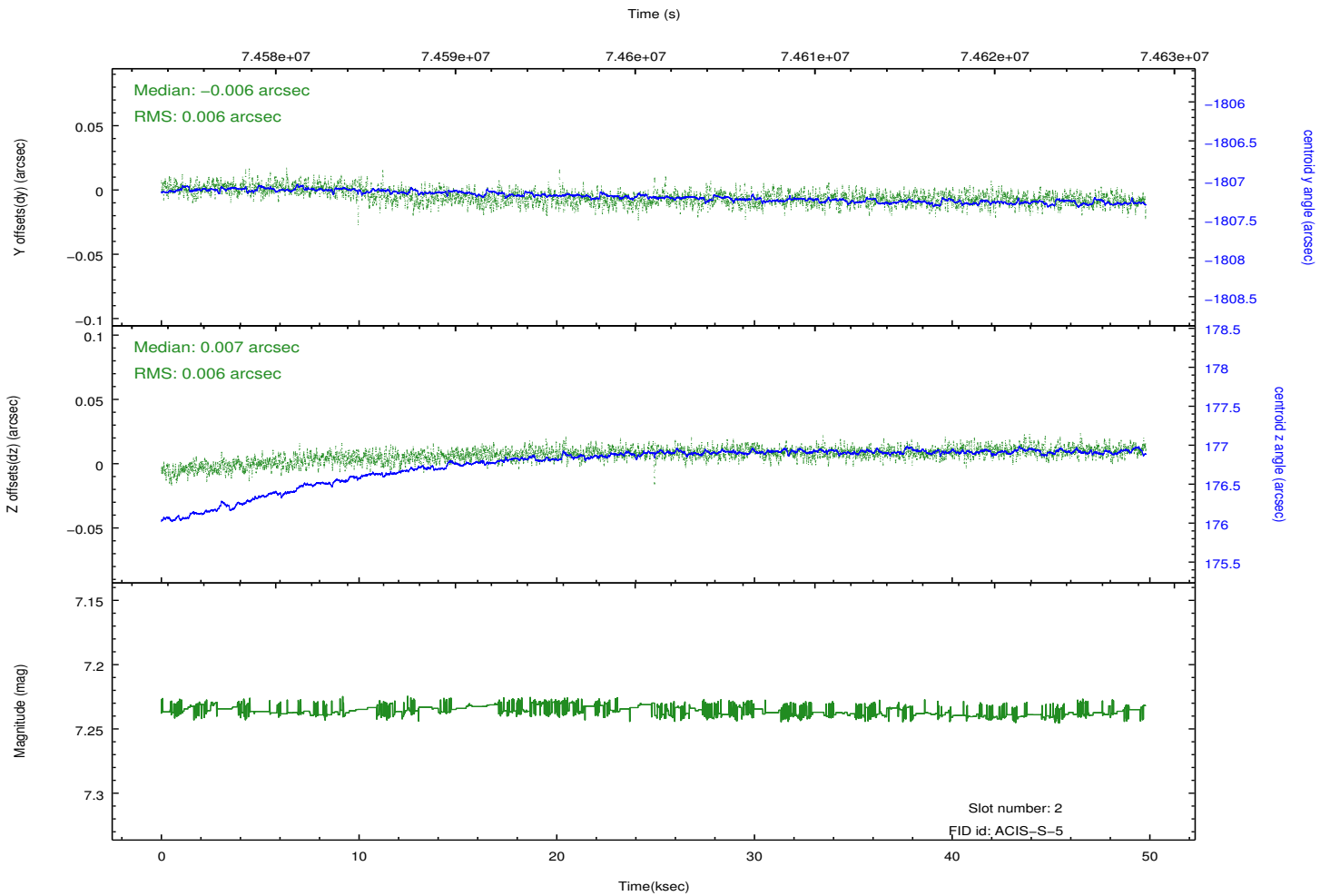
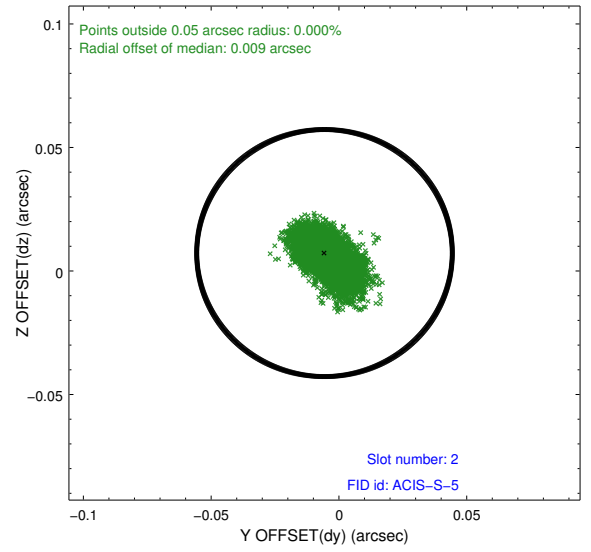
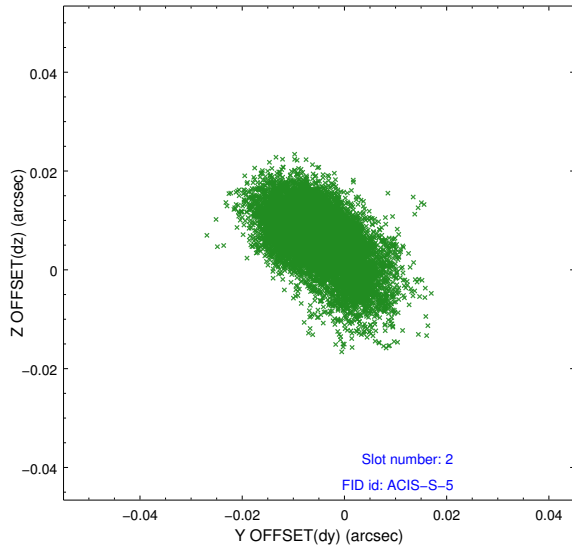
2.5.1 Slot 0



2.5.2 Slot 1



2.5.3 Slot 2



A Summary

A.1 Status

V&V Scientist	Beth Sundheim
V&V Date (YYYY-MM-DD)	2012.08.30
V&V Edition	1
V&V Disposition and Status	OK
V&V Charge Time	49.795

A.2 Comments