

V&V Reference Report

L2 ASCDS Version : 8.4.5

Observation 828 - L2 Version 3
Chandra X-Ray Center

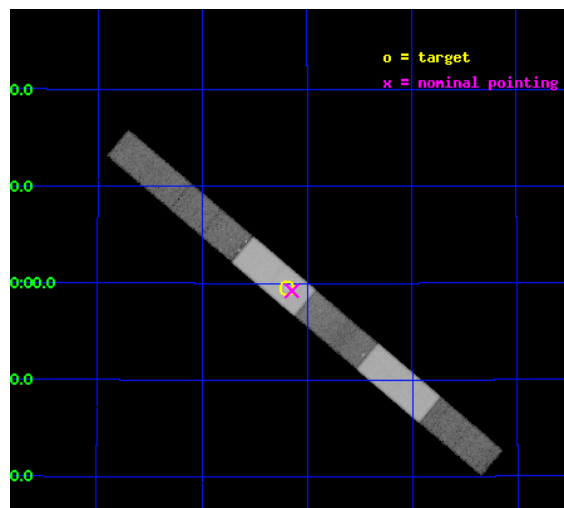
L2 Processing Date : Sep 3 2012

Contents

1	Front	2
2	OBI	3
2.1	OBI	3
2.1.1	Images	3
2.1.2	Bias	3
2.1.3	Parameters	4
2.1.4	Events	4
2.2	Compared Parameters	5
2.3	Aspect	6
2.4	Star Slots	9
2.4.1	Slot 3	9
2.4.2	Slot 4	10
2.4.3	Slot 5	11
2.4.4	Slot 6	12
2.4.5	Slot 7	13
2.5	FID Slots	14
2.5.1	Slot 0	14
2.5.2	Slot 1	15
2.5.3	Slot 2	16
A	Summary	17
A.1	Status	17
A.2	Comments	17

1 Front

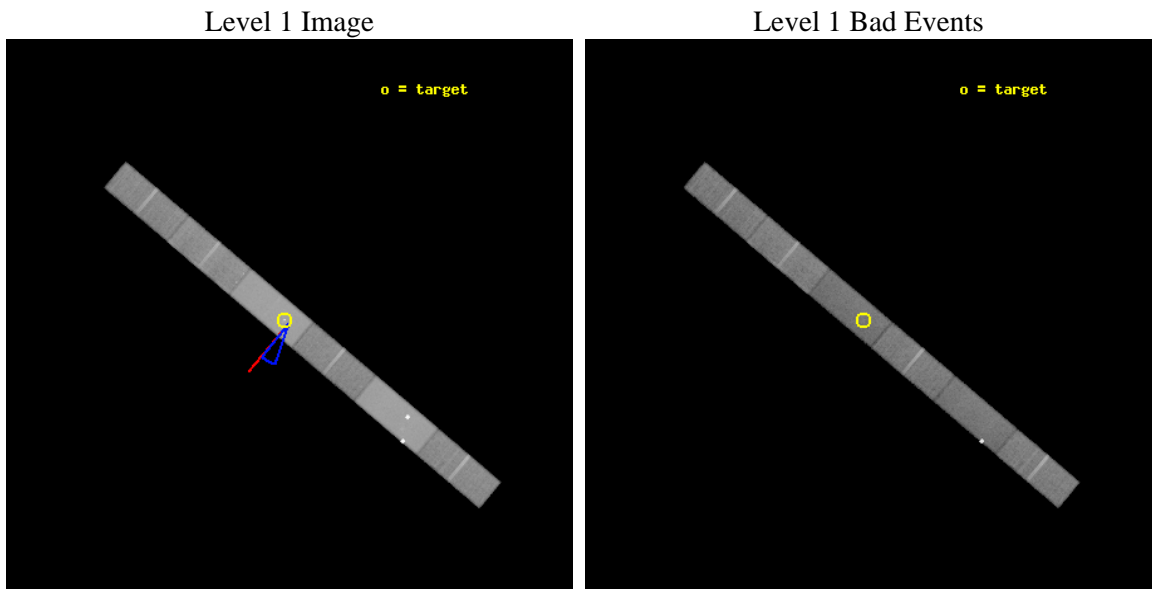
seq_num	700133	Sequence number
obs_id	828	Observation id
title	X-RAY EMISSION FROM THE OPTICAL JET OF THE RADIO GALAXY 3C 66B: TESTING THEORIES OF PARTICLE ACCELERATION	Proposal title
observer	Dr Martin Hardcastle	Principal investigator
object	3C 66B	Source name
dtcycle	0	
cycle	P	events from which exps? Prim/Second/Both
ra_targ	35.797917	Observer's specified target RA [deg]
dec_targ	42.992056	Observer's specified target Dec [deg]
ra_nom	35.786209126658	Nominal RA [deg]
dec_nom	42.987163375176	Nominal Dec [deg]
roll_nom	220.16459816275	Nominal Roll [deg]
revision	3	Processing version of data
ontime	45169.007828996	Sum of GTIs [s]
lifetime	43966.095457284	Lifetime [s]
ontime4	45170.548799232	Sum of GTIs [s]
ontime5	45169.007809073	Sum of GTIs [s]
ontime6	45170.548799232	Sum of GTIs [s]
ontime7	45169.007828996	Sum of GTIs [s]
ontime8	45170.548819155	Sum of GTIs [s]
ontime9	45170.548799232	Sum of GTIs [s]
l2events	467125	Number of level 2 events



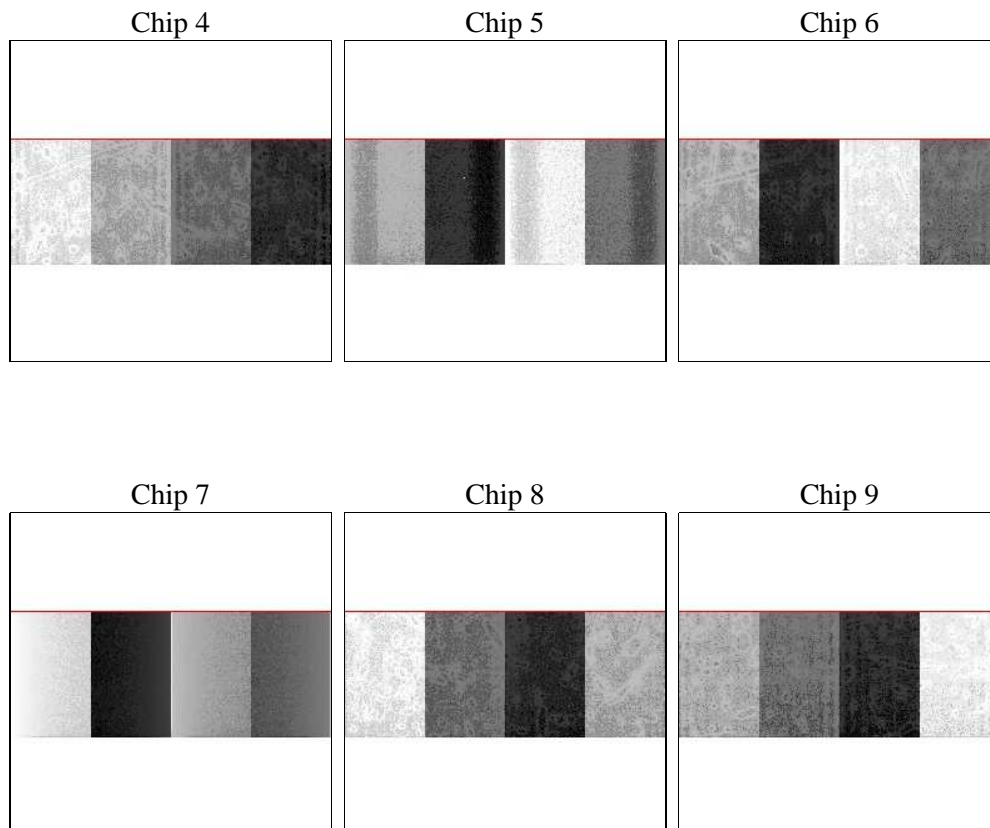
2 OBI

2.1 OBI

2.1.1 Images



2.1.2 Bias



2.1.3 Parameters

obi_num	0	Obi number	sched_exp_time	45008.025000	[s] Scheduled observation exposure time
ascdsver	8.4.5	Processing system revision	ontime	45169.007828996	Sum of GTIs [s]
caldsver	4.5.1.1	 	ontime4	45170.548799232	Sum of GTIs [s]
date	2012-09-03T18:58:34	Date and time of file creation	ontime5	45169.007809073	Sum of GTIs [s]
revision	3	Processing version of data	ontime6	45170.548799232	Sum of GTIs [s]
			ontime7	45169.007828996	Sum of GTIs [s]
			ontime8	45170.548819155	Sum of GTIs [s]
			ontime9	45170.548799232	Sum of GTIs [s]
			l1events	1214933	Number of level 1 events

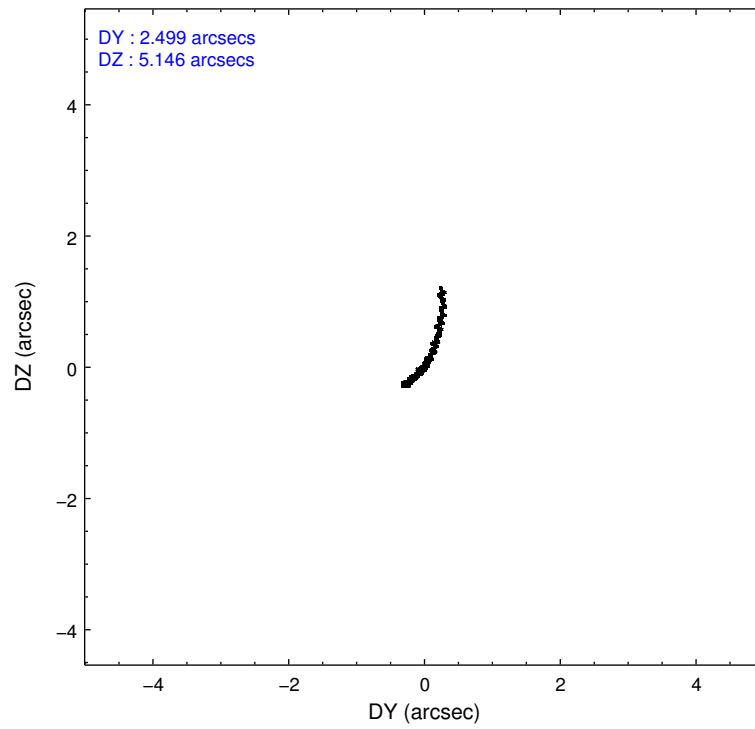
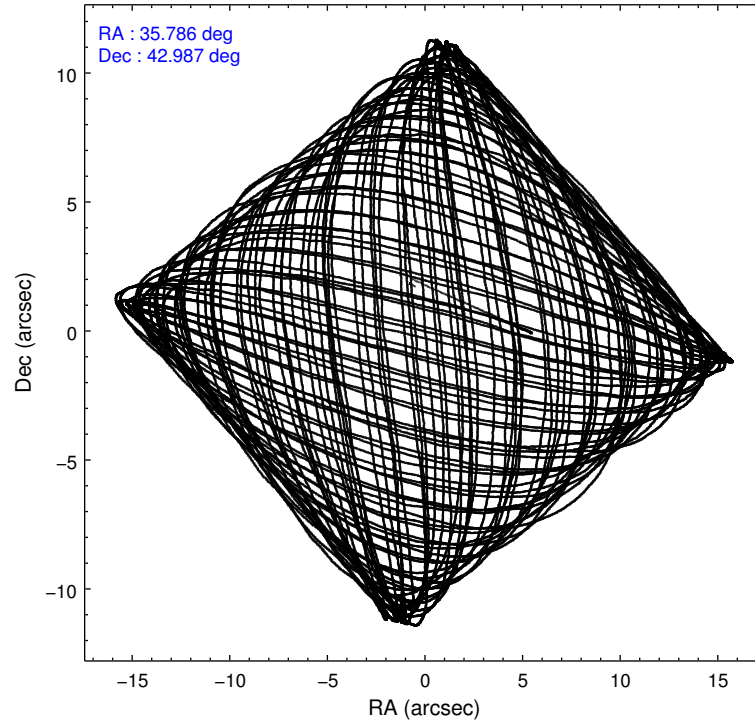
2.1.4 Events

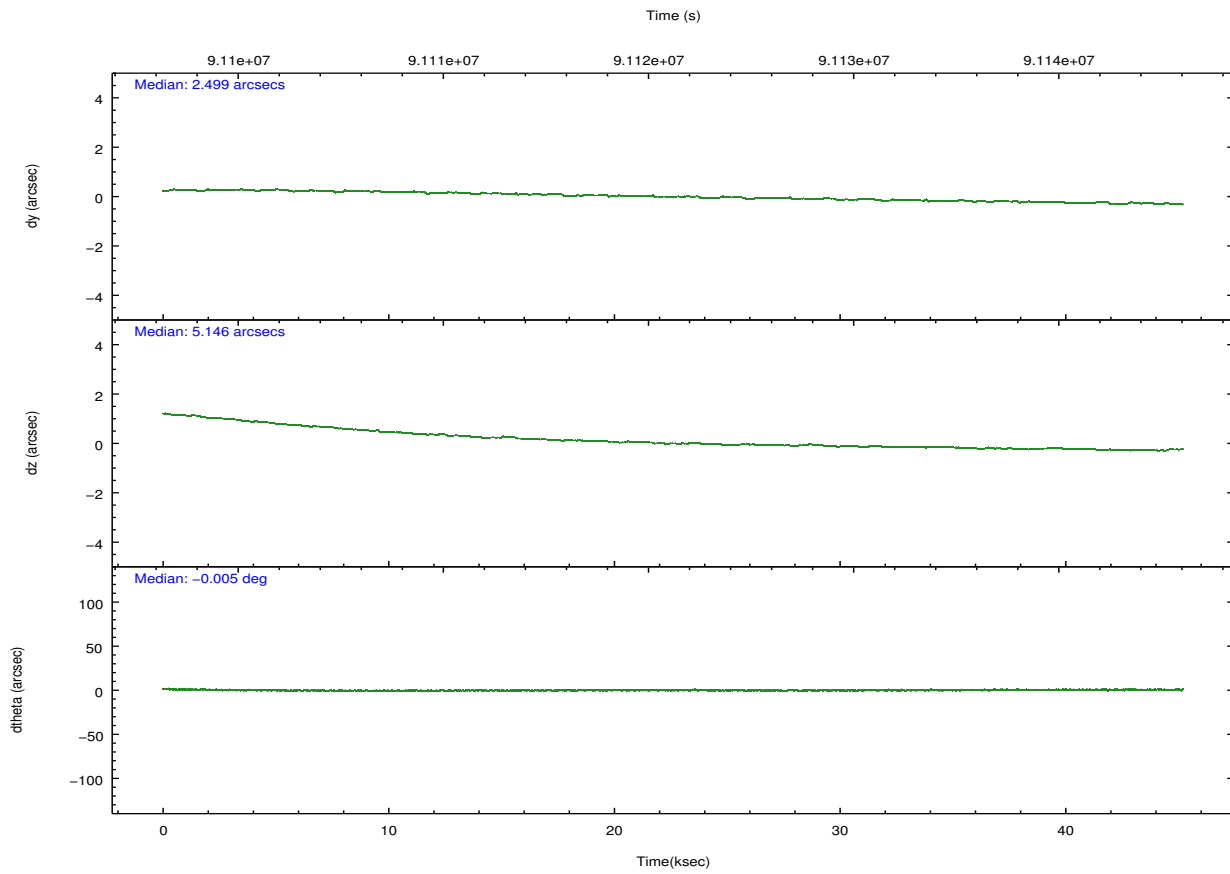
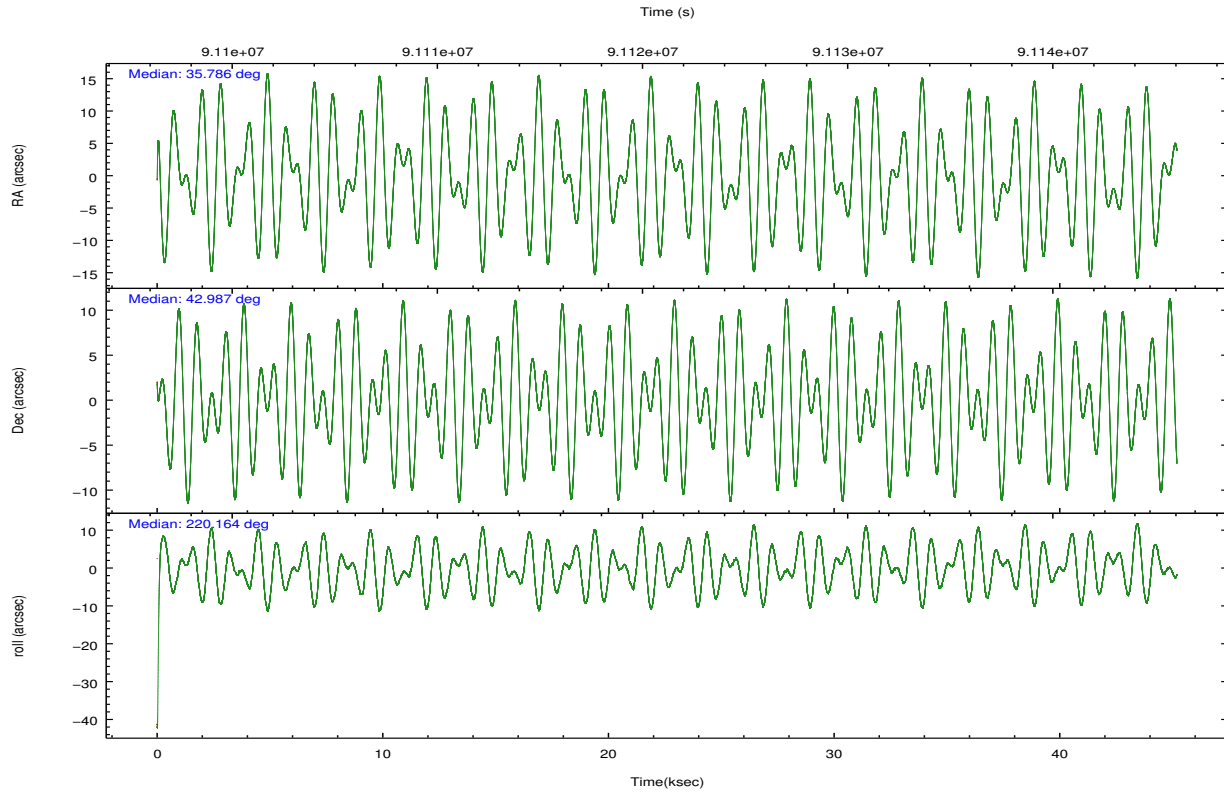
	ccd 4	ccd 5	ccd 6	ccd 7	ccd 8	ccd 9		ccd 4	ccd 5	ccd 6	ccd 7	ccd 8	ccd 9
level 1 events	146925	339600	137800	291894	167880	130834	grade 0 events	10630	62888	14470	28716	16007	11221
rejected events	126436	109350	113474	84111	131102	110240		7%	18%	10%	9%	9%	8%
rejected %	86%	32%	82%	28%	78%	84%	grade 1 events	53	353	43	161	78	44
								0%	0%	0%	0%	0%	0%
							grade 2 events	4038	58439	3586	40910	6895	3281
								2%	17%	2%	14%	4%	2%
							grade 3 events	1865	16120	1953	18742	3384	1855
								1%	4%	1%	6%	2%	1%
							grade 4 events	1677	12981	1852	18673	3225	1824
								1%	3%	1%	6%	1%	1%
							grade 5 events	4029	24517	4725	14242	5810	4703
								2%	7%	3%	4%	3%	3%
							grade 6 events	2463	81268	2659	101558	7620	2606
								1%	23%	1%	34%	4%	1%
							grade 7 events	122170	83034	108512	68892	124861	105300
								83%	24%	78%	23%	74%	80%

2.2 Compared Parameters

Parameter	Planned	Actual	Parameter	Planned	Actual
Instrument	ACIS	ACIS	Obspar format version number	7	7
Detector	ACIS-456789	ACIS-456789	Obspar file type	PREDICTED	ACTUAL
Grating	NONE	NONE	Obspar update status	NONE	UPDATED
Data mode	FAINT	FAINT	Number of optional ACIS chips dropped	0	0
Observation mode	POINTING	POINTING	On-chip summing requested	N	N
[deg] Pointing RA	35.798632	35.78620912665763	Subarray requested	CUSTOM	CUSTOM
[deg] Pointing Dec	43.012947	42.98716337517568	Subarray start row	312	312
[deg] Pointing Roll	219.999504	220.1645981627546	Subarray row count	400	400
[deg] Roll angle	210.000000	210.000000	Alternating exposures requested	N	N
[deg] Roll tolerance	10.000000	10.000000	[s] Primary exposure time	0.000000	1.5
Roll constraint allows 180D rotation	N	N			
[mm] SIM focus pos	-0.684267	-0.6828225247311905			
[mm] SIM defocus	0	0.001444936568705701			
[mm] SIM translation stage pos	-190.132523	-190.1425803651734			
[mm] SIM translation stage offset	0	0.01005778216563158			
[s] Observation start time (MET)	91098784.184000	91097682.763776			
Observation start date	2000-11-20T09:12:00	2000-11-20T08:54:42			
[s] Observation end time (MET)	91143792.184000	91144106.040549			
Observation end date	2000-11-20T21:42:08	2000-11-20T21:48:26			
Read mode	TIMED	TIMED			

2.3 Aspect



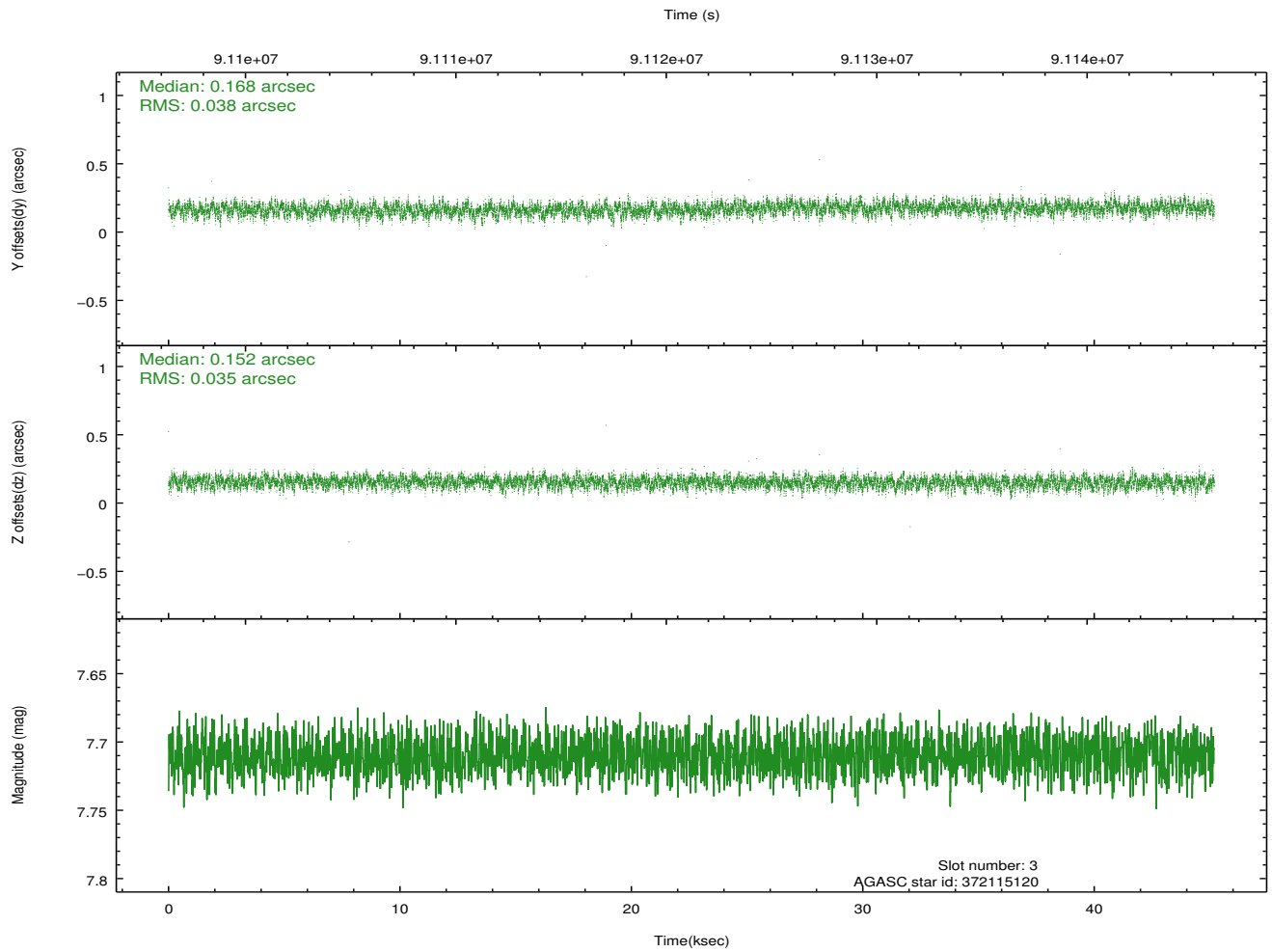
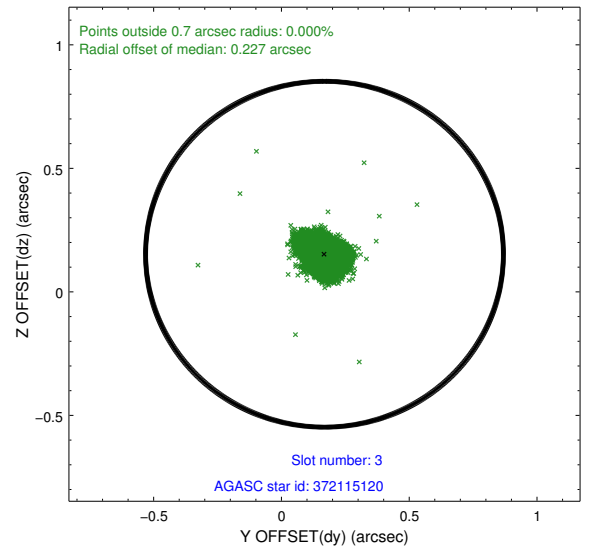
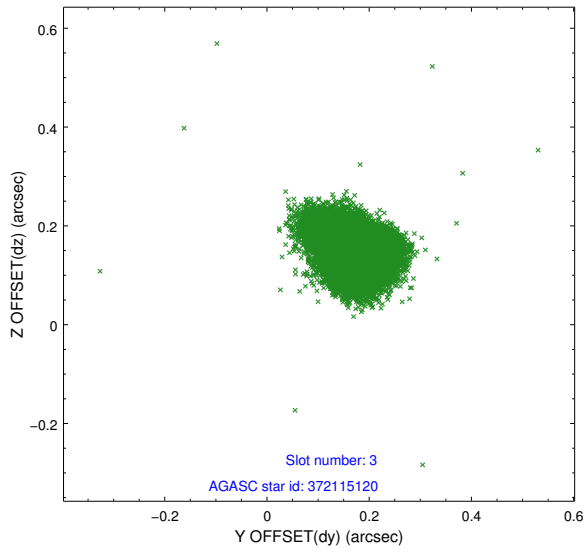


Slot Statistics

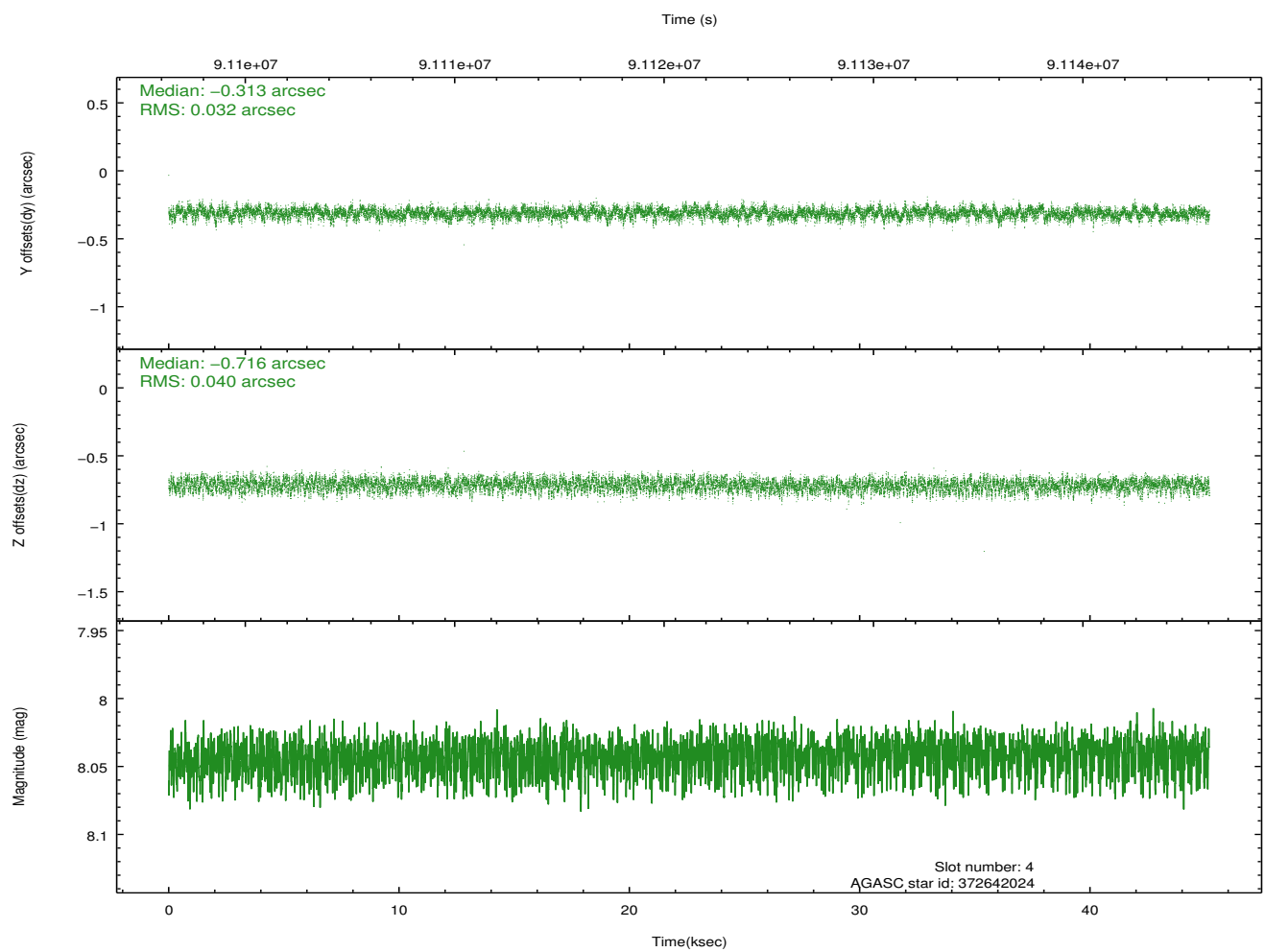
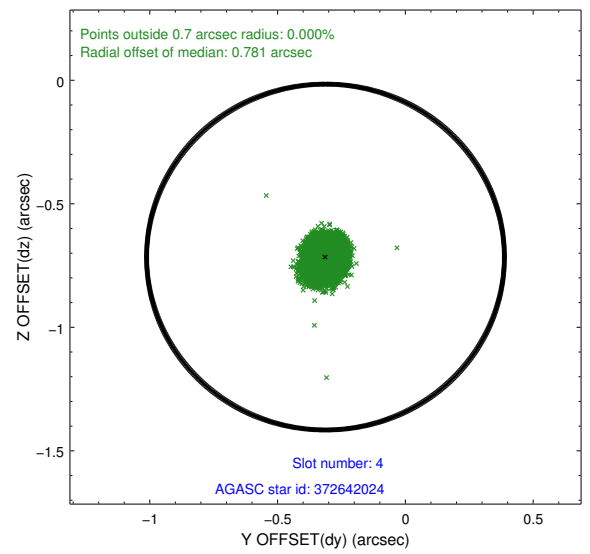
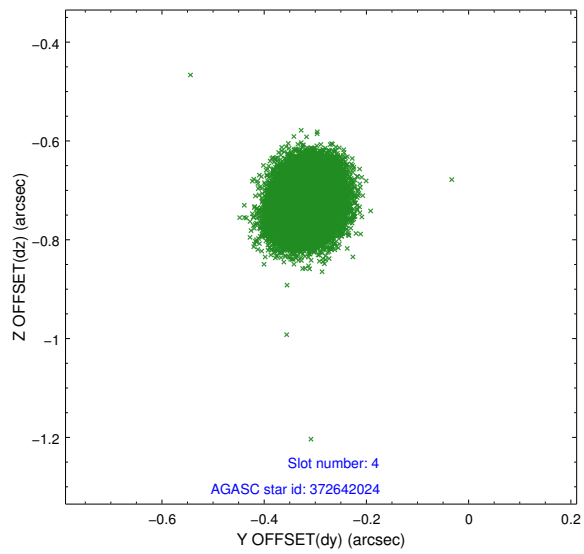
slot	status	id	mag	n_pts	med_dy	med_dz	dr1	dr2	ra	dec	mean_y	mean_z
0	FID	ACIS-S-2	7.11	11018	-0.032	0.003	0.016	0.023	0.000000	0.000000	-755.14	-1726.38
1	FID	ACIS-S-4	7.21	11017	-0.021	0.014	0.020	0.029	0.000000	0.000000	2158.13	182.15
2	FID	ACIS-S-5	7.24	11017	0.018	-0.007	0.015	0.021	0.000000	0.000000	-1807.96	175.75
3	GUIDE	372115120	7.71	22033	0.168	0.152	0.055	0.089	35.261123	42.943957	1242.33	-722.48
4	GUIDE	372642024	8.04	22034	-0.313	-0.716	0.055	0.088	35.710546	43.517454	-991.27	-1538.97
5	GUIDE	372642296	7.63	22032	-0.016	0.245	0.049	0.077	36.293649	43.545428	-2223.86	-639.96
6	GUIDE	372642872	8.72	22031	0.050	0.133	0.057	0.095	36.621364	43.186601	-2062.71	902.23
7	GUIDE	372125032	8.72	22034	0.112	0.189	0.056	0.093	35.265346	42.773671	1630.81	-247.93

2.4 Star Slots

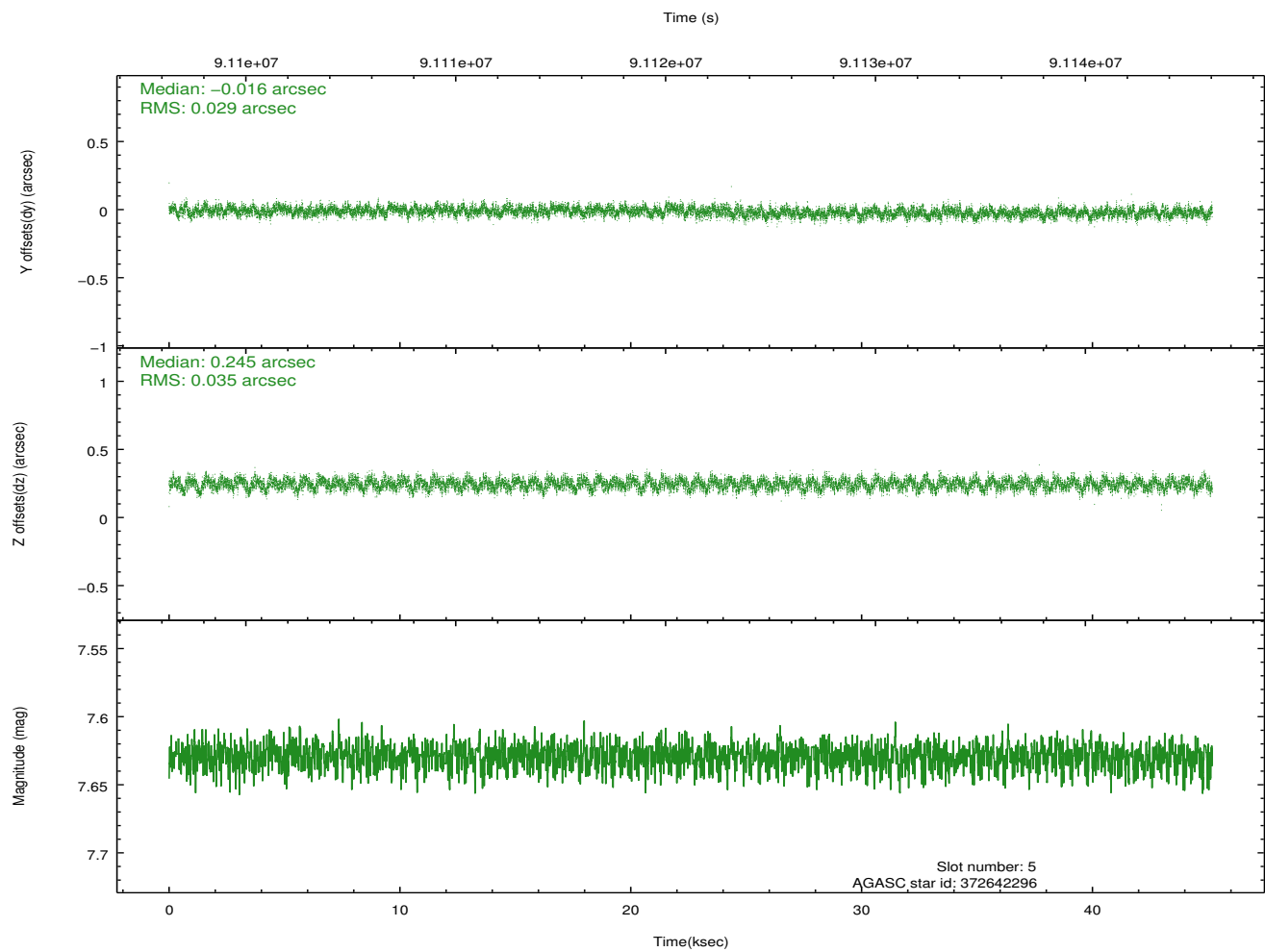
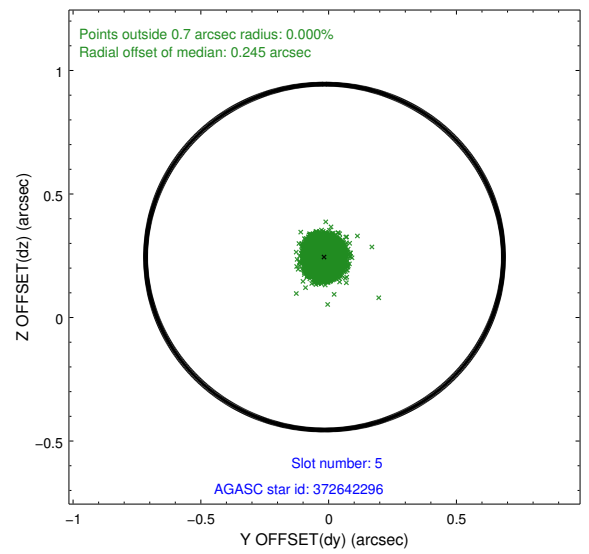
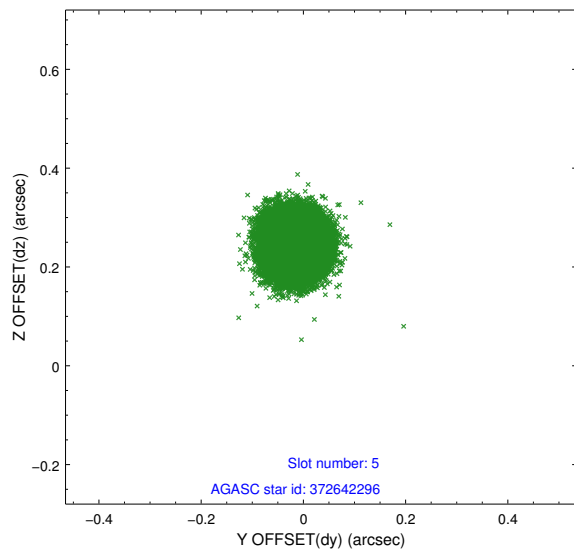
2.4.1 Slot 3



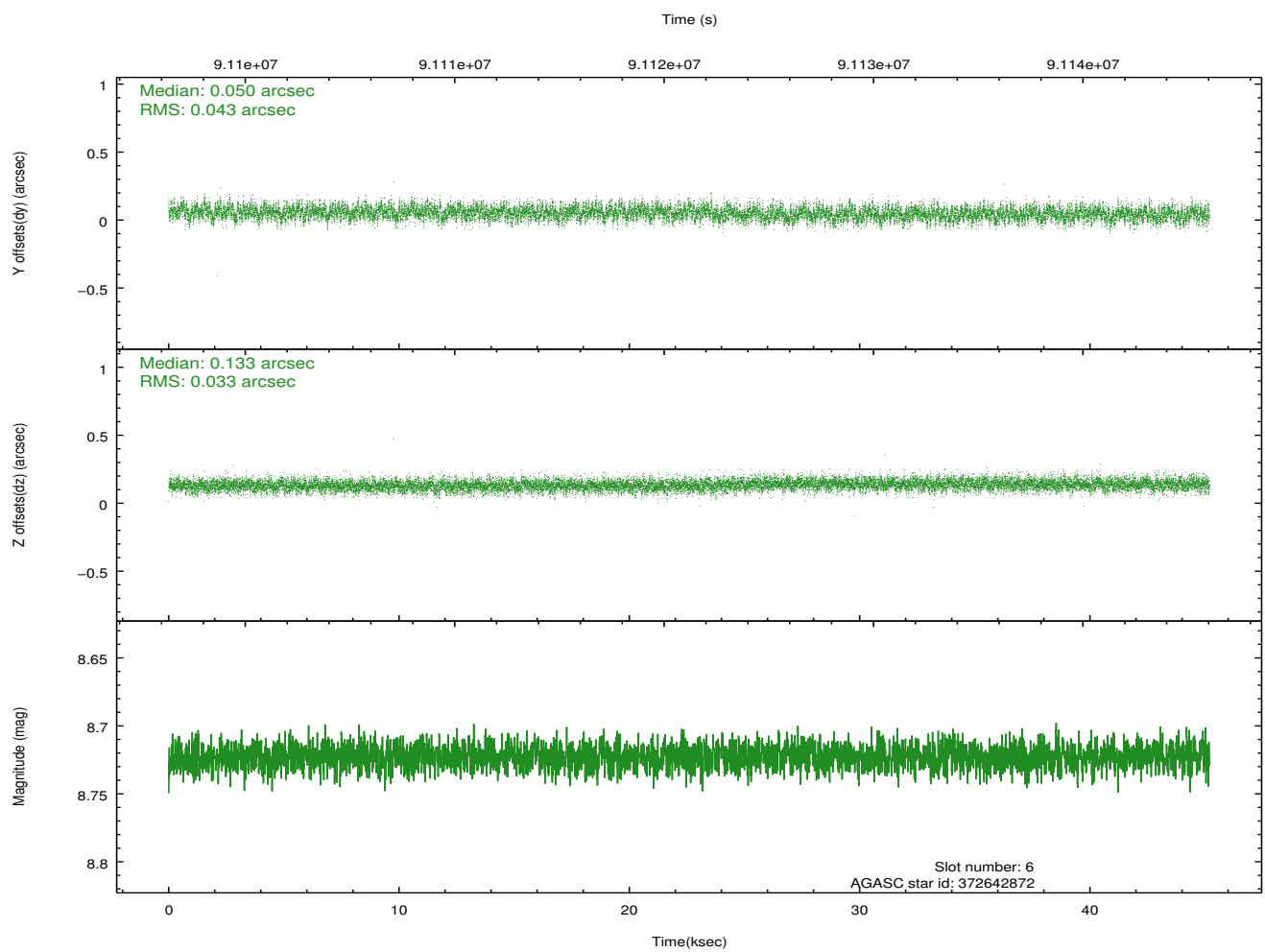
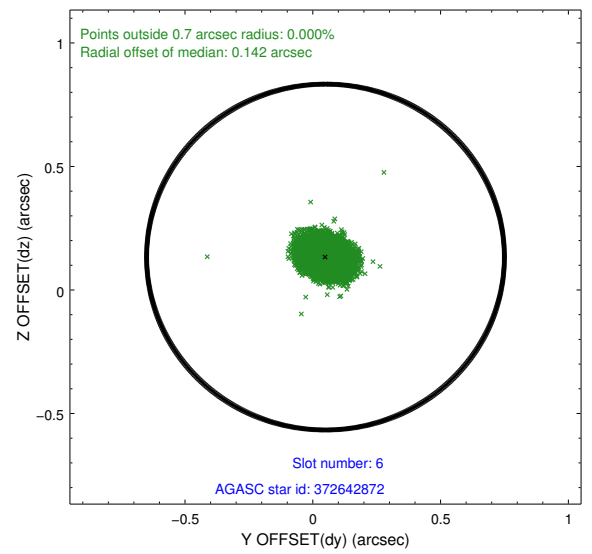
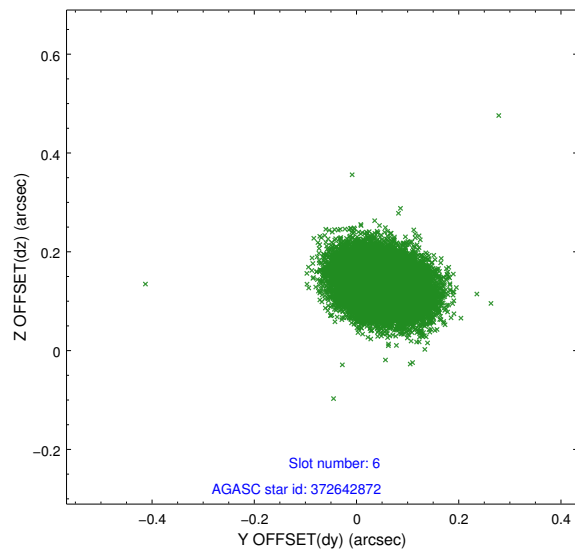
2.4.2 Slot 4



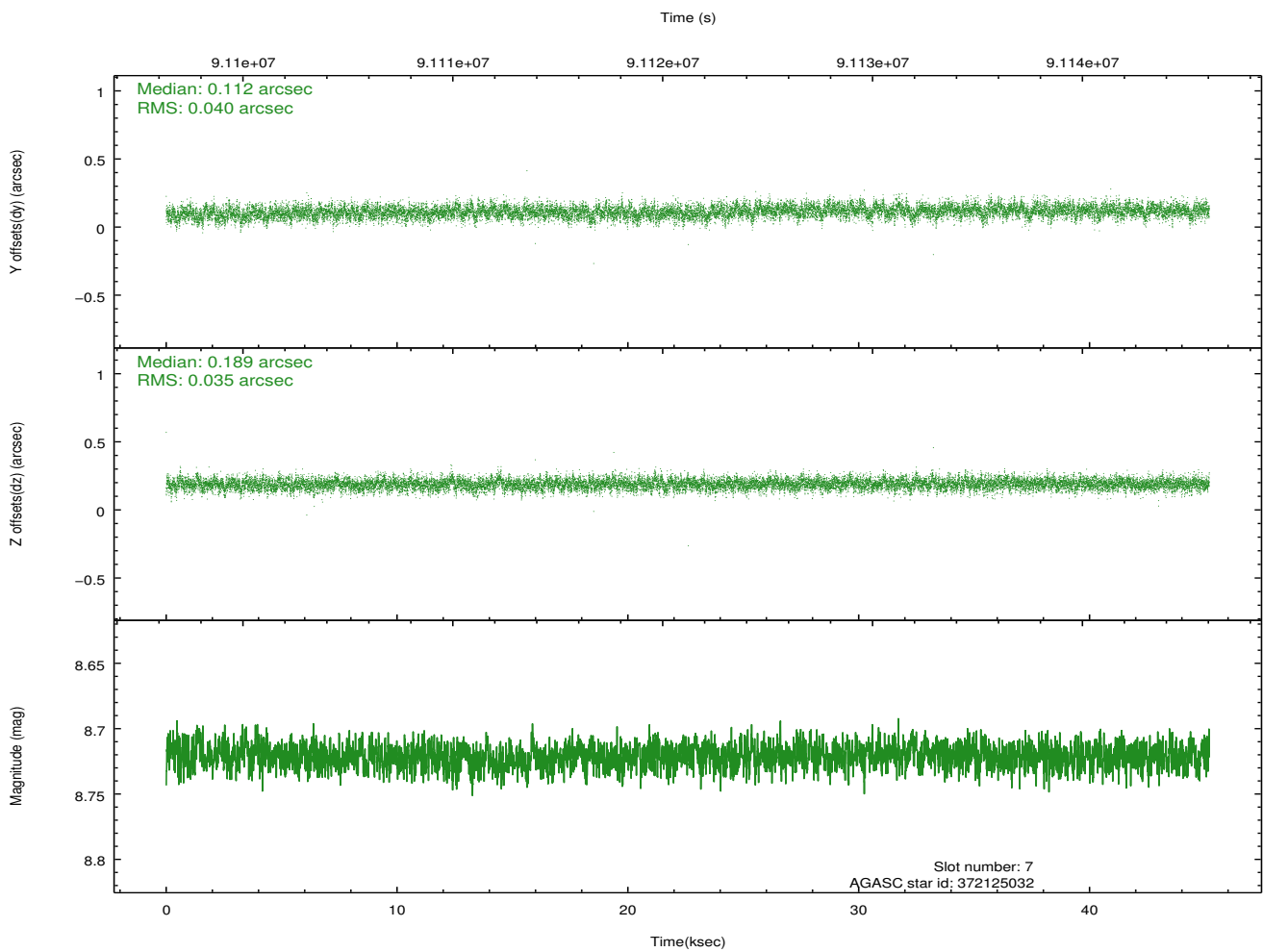
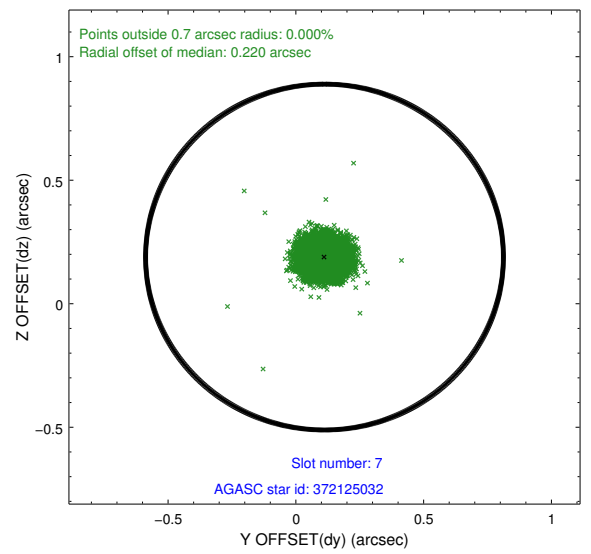
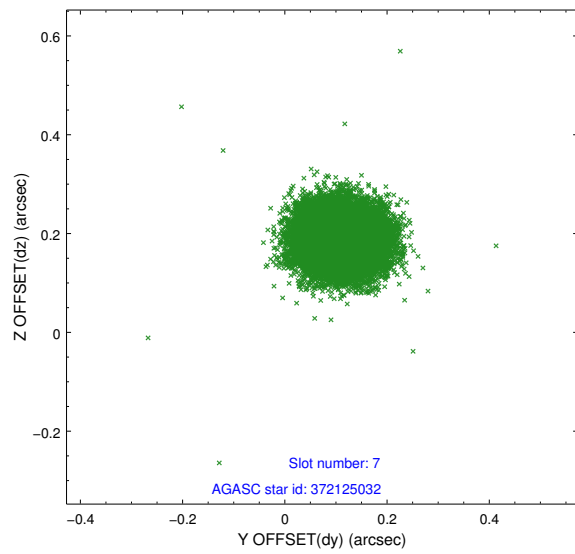
2.4.3 Slot 5



2.4.4 Slot 6

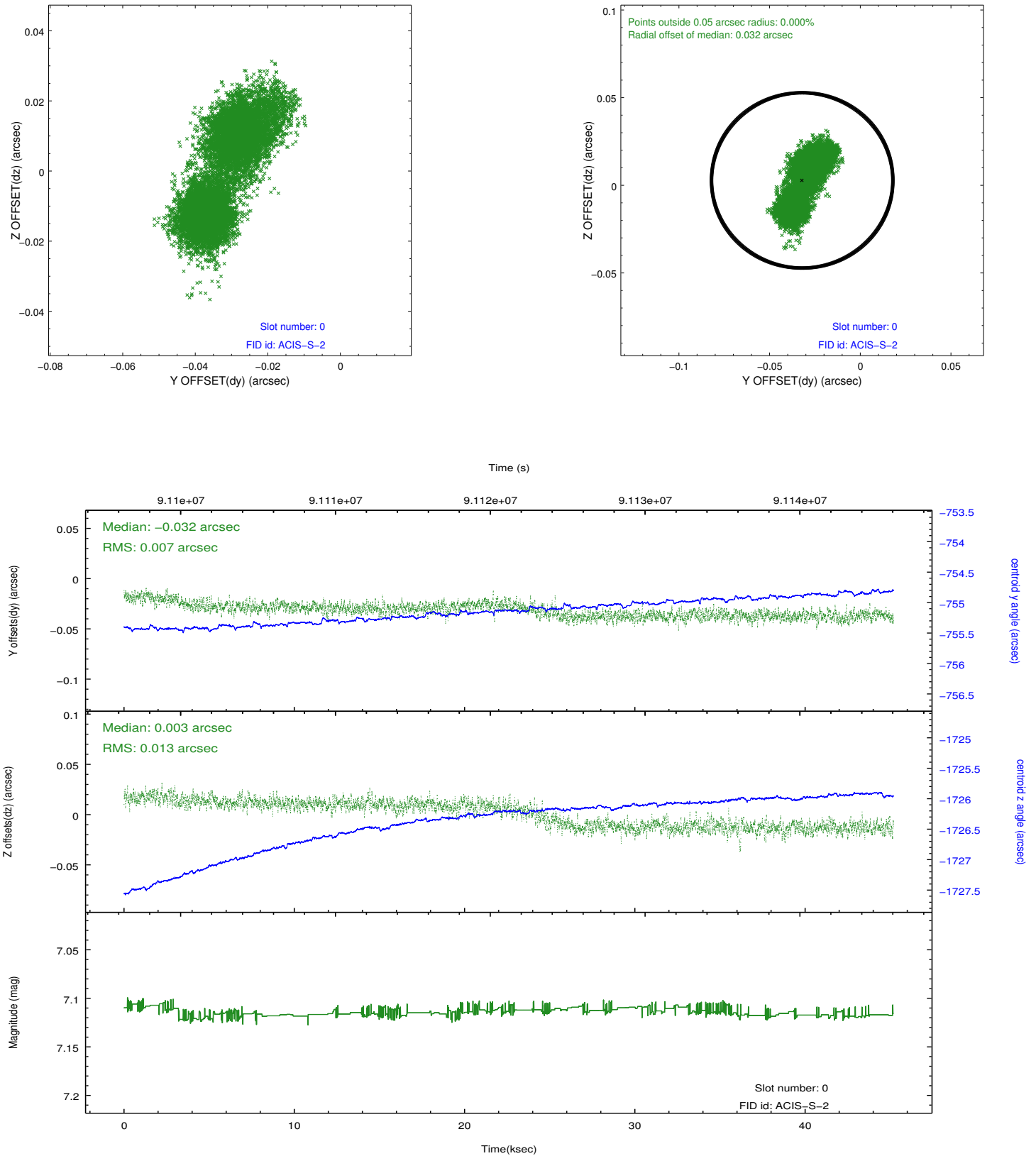


2.4.5 Slot 7

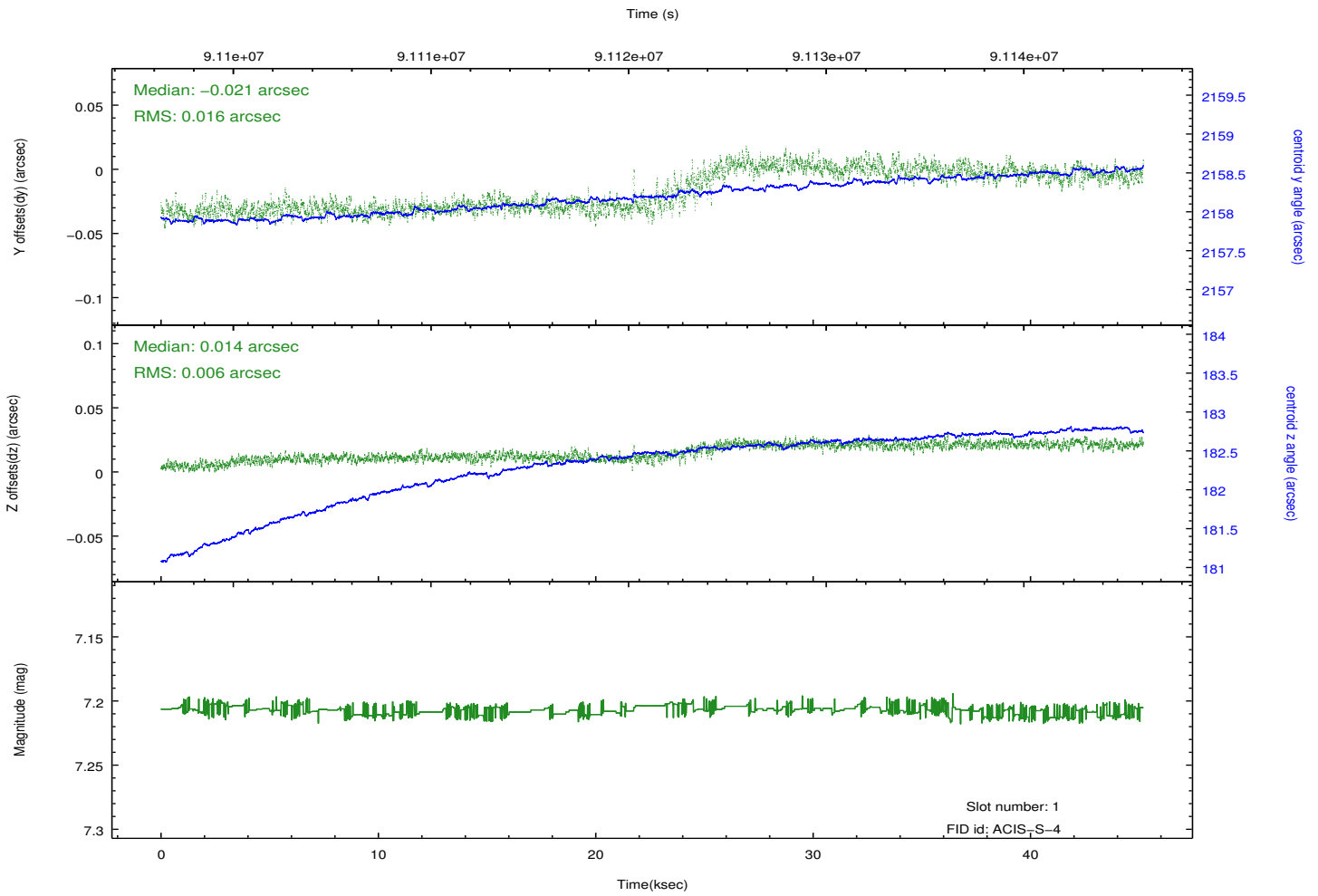
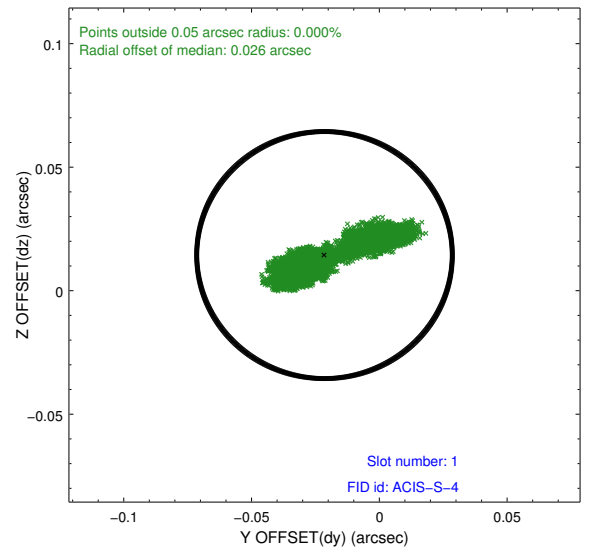
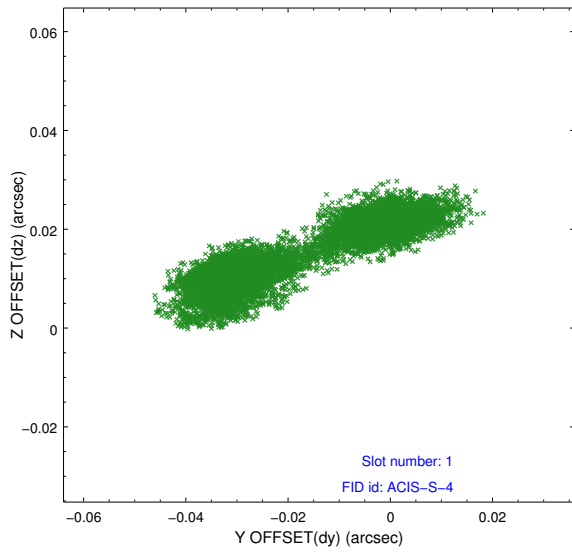


2.5 FID Slots

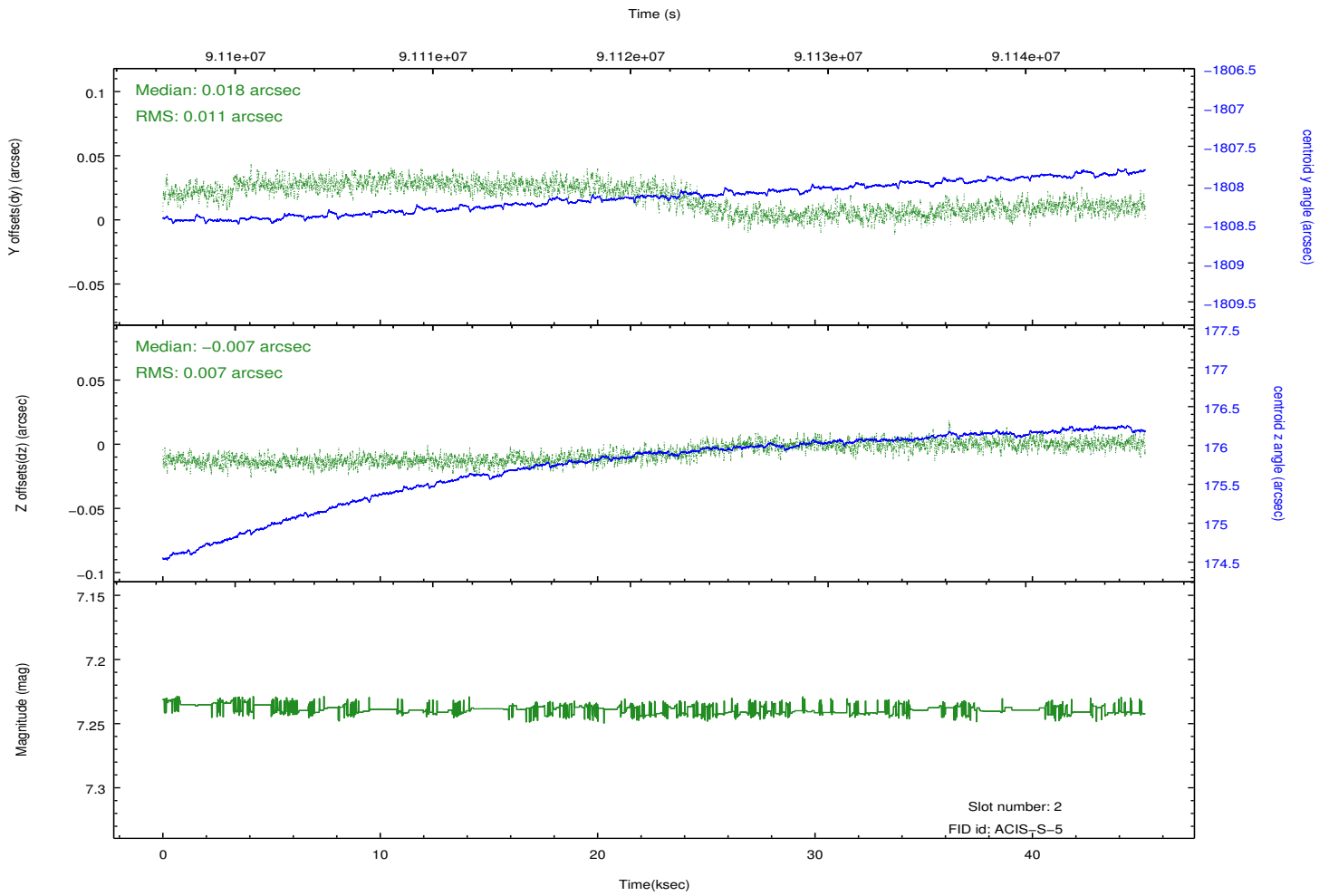
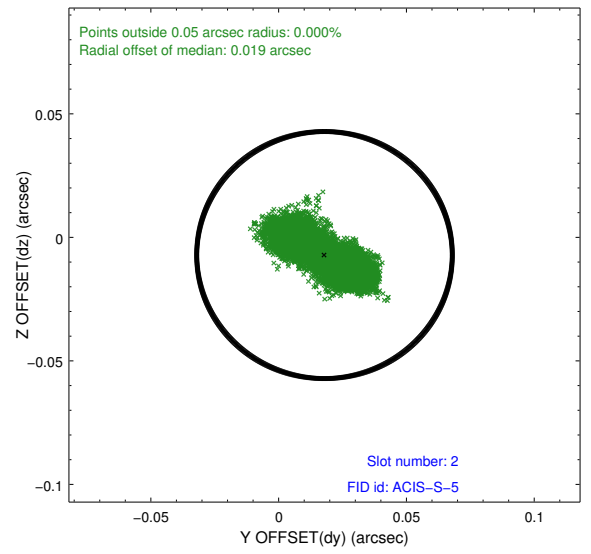
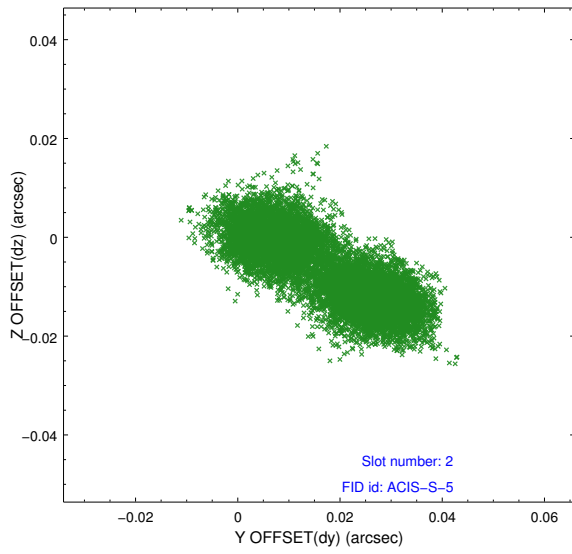
2.5.1 Slot 0



2.5.2 Slot 1



2.5.3 Slot 2



A Summary

A.1 Status

V&V Scientist	Jen Lauer
V&V Date (YYYY-MM-DD)	2012.09.11
V&V Edition	1
V&V Disposition and Status	OK
V&V Charge Time	45.169

A.2 Comments

Roll constraint not met: requested roll 210 +/- 10 deg., actual roll 220.16 deg.