

V&V Reference Report

L2 ASCDS Version : 8.4.3.1

Observation 8458 - L2 Version 2
Chandra X-Ray Center

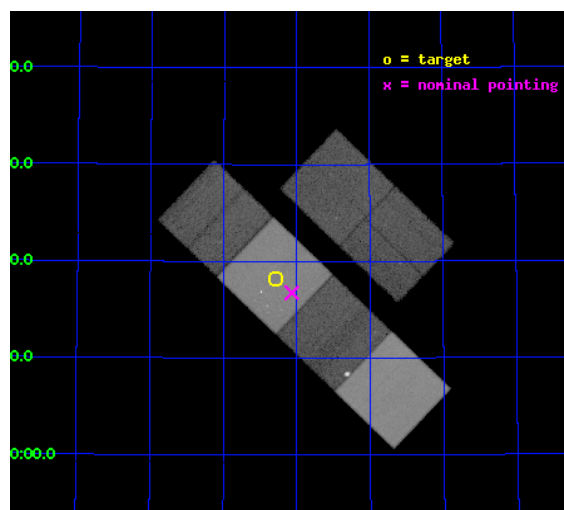
L2 Processing Date : Apr 13 2012

Contents

1	Front	2
2	OBI	3
2.1	OBI	3
2.1.1	Images	3
2.1.2	Bias	3
2.1.3	Parameters	4
2.1.4	Events	4
2.2	Compared Parameters	5
2.3	Aspect	6
2.4	Star Slots	9
2.4.1	Slot 3	9
2.4.2	Slot 4	10
2.4.3	Slot 5	11
2.4.4	Slot 6	12
2.4.5	Slot 7	13
2.5	FID Slots	14
2.5.1	Slot 0	14
2.5.2	Slot 1	15
2.5.3	Slot 2	16
A	Summary	17
A.1	Status	17
A.2	Comments	17

1 Front

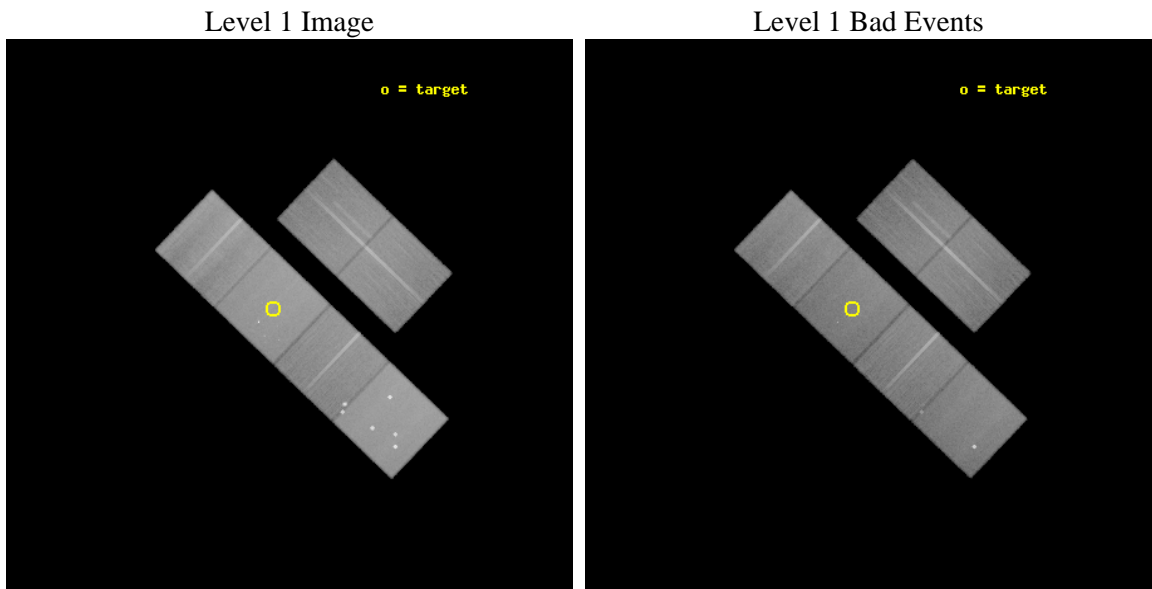
seq_num	600520	Sequence number
obs_id	8458	Observation id
title	A Deep Chandra Observation of Our Local Starburst, IC 10	Proposal
observer	Dr Andrea Prestwich	Principal investigator
object	IC 10	Source name
dtcycle	0	
cycle	P	events from which exps? Prim/Second/Both
ra_targ	5.072083	Observer's specified target RA [deg]
dec_targ	59.303778	Observer's specified target Dec [deg]
ra_nom	5.0167853793581	Nominal RA [deg]
dec_nom	59.279247435403	Nominal Dec [deg]
roll_nom	223.70416735949	Nominal Roll [deg]
revision	2	Processing version of data
ontime	44127.99983567	Sum of GTIs [s]
livetime	43569.224531059	Livetime [s]
ontime2	44127.99983567	Sum of GTIs [s]
ontime3	44127.99983567	Sum of GTIs [s]
ontime5	44127.99983567	Sum of GTIs [s]
ontime6	44121.517845035	Sum of GTIs [s]
ontime7	44127.99983567	Sum of GTIs [s]
ontime8	44127.99983567	Sum of GTIs [s]
l2events	667402	Number of level 2 events



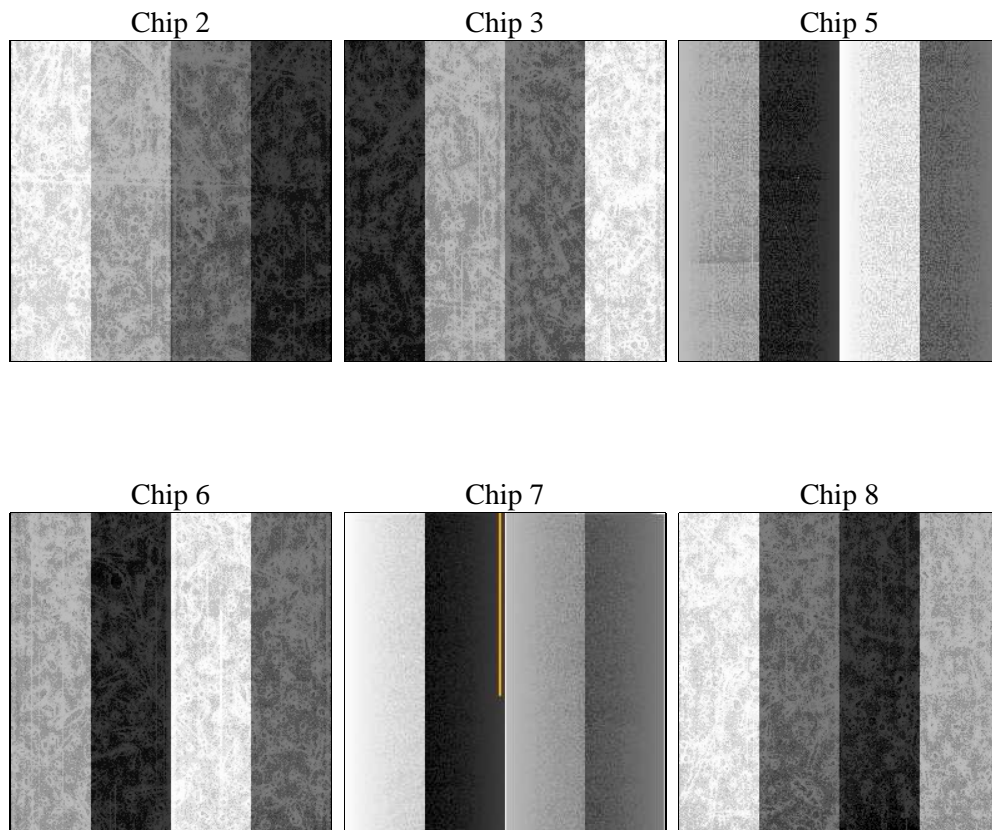
2 OBI

2.1 OBI

2.1.1 Images



2.1.2 Bias



2.1.3 Parameters

obi_num	0	Obi number	sched_exp_time	44000.000000	[s] Scheduled observation exposure time
ascdsver	8.4.3.1	Processing system revision	ontime	44127.99983567	Sum of GTIs [s]
caldbver	4.4.9	 	ontime2	44127.99983567	Sum of GTIs [s]
date	2012-04-13T01:21:59	Date and time of file creation	ontime3	44127.99983567	Sum of GTIs [s]
revision	2	Processing version of data	ontime5	44127.99983567	Sum of GTIs [s]
			ontime6	44121.517845035	Sum of GTIs [s]
			ontime7	44127.99983567	Sum of GTIs [s]
			ontime8	44127.99983567	Sum of GTIs [s]
			l1events	2970919	Number of level 1 events

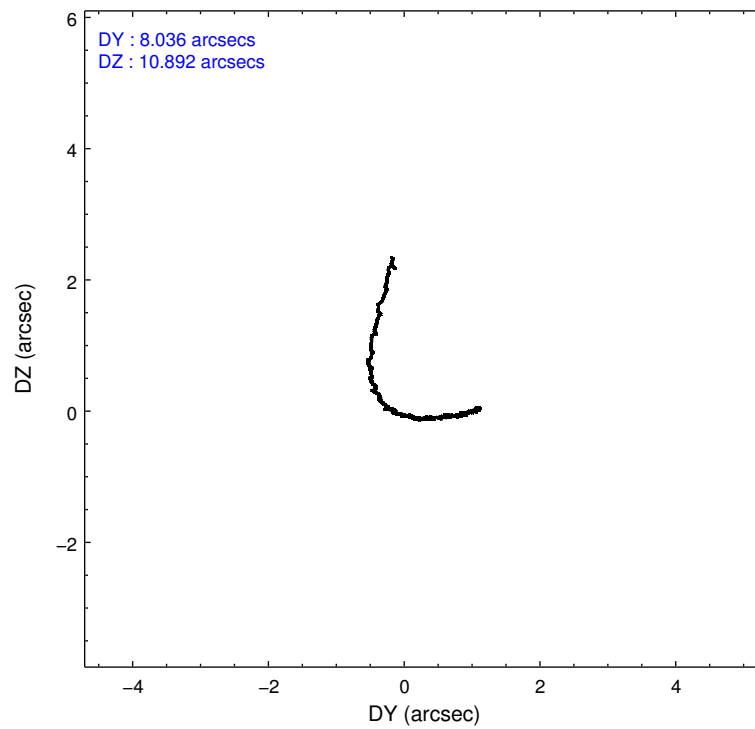
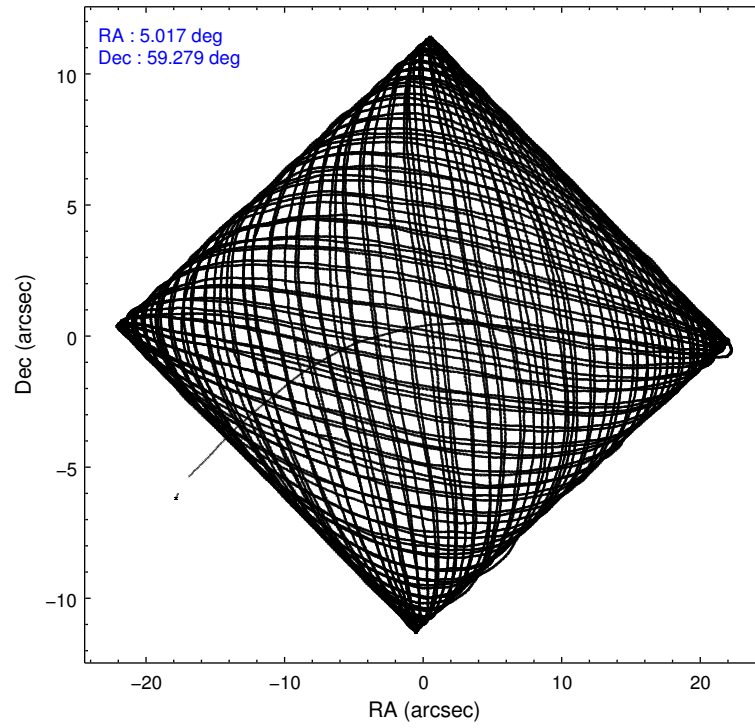
2.1.4 Events

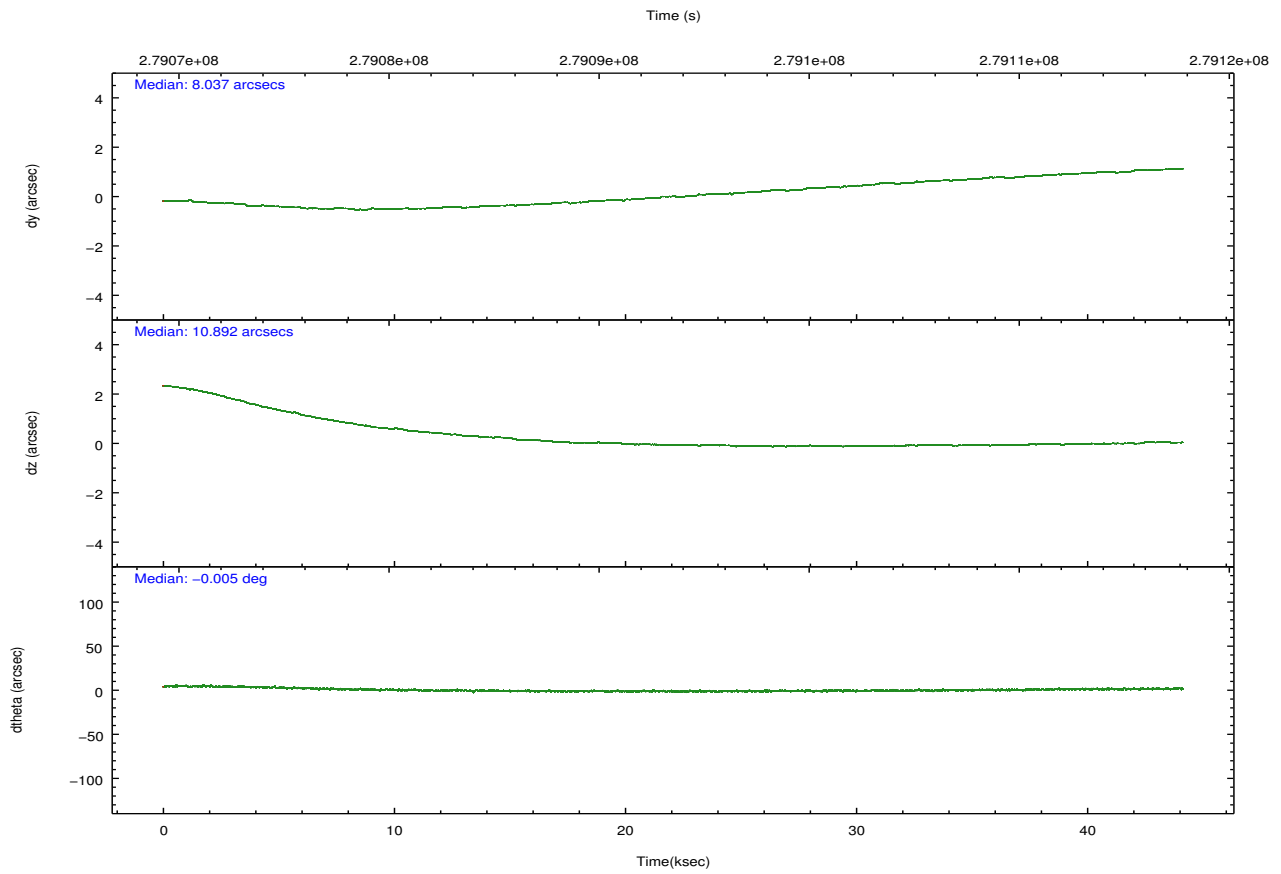
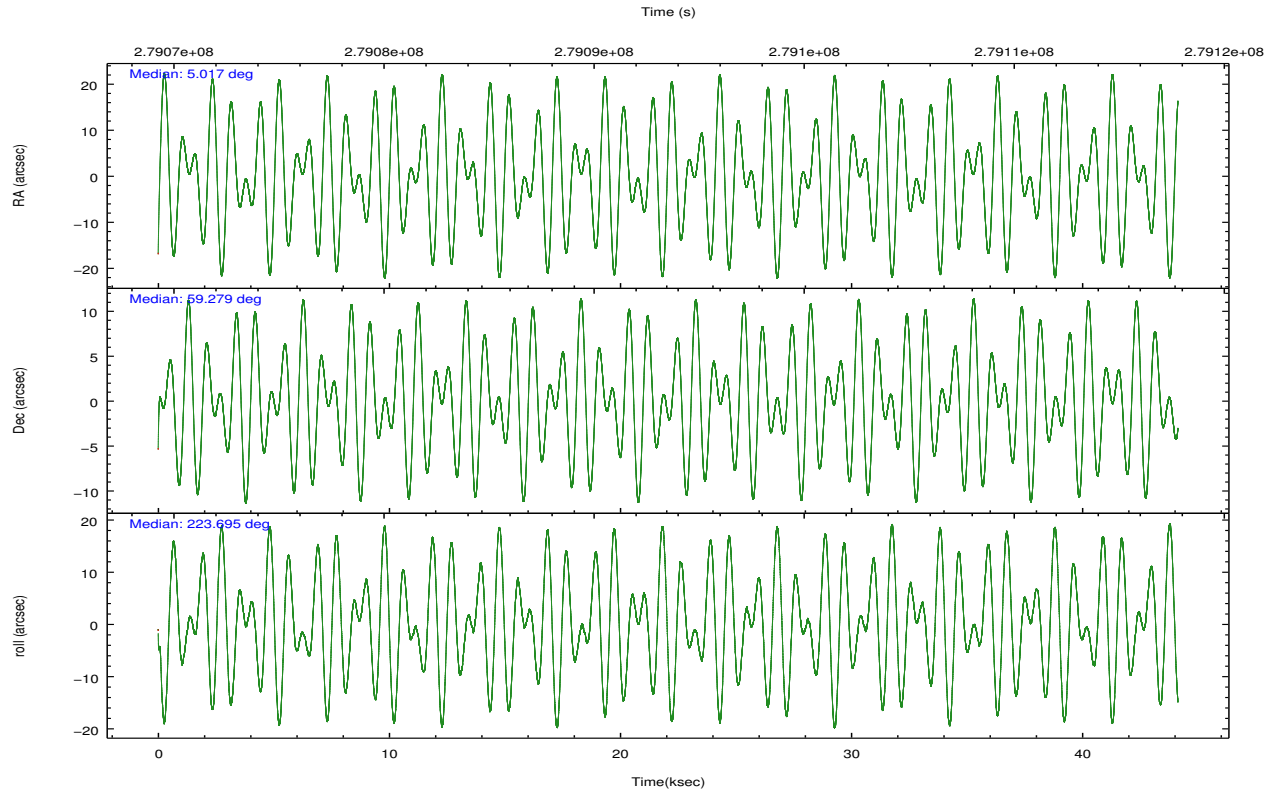
	ccd 2	ccd 3	ccd 5	ccd 6	ccd 7	ccd 8		ccd 2	ccd 3	ccd 5	ccd 6	ccd 7	ccd 8
level 1 events	422099	392382	653768	423646	561191	517833	grade 0 events	19744	20339	48147	25881	21036	35785
rejected events	376087	346051	344362	367303	326759	404774		4%	5%	7%	6%	3%	6%
rejected %	89%	88%	52%	86%	58%	78%	grade 1 events	260	254	1054	249	642	364
								0%	0%	0%	0%	0%	0%
							grade 2 events	10035	9082	87819	11169	47917	25639
								2%	2%	13%	2%	8%	4%
							grade 3 events	4281	4545	11684	4810	20507	11999
								1%	1%	1%	1%	3%	2%
							grade 4 events	4276	4454	11266	4864	20270	10973
								1%	1%	1%	1%	3%	2%
							grade 5 events	15565	18325	45479	19034	52571	25002
								3%	4%	6%	4%	9%	4%
							grade 6 events	7904	8118	151939	9872	125727	29100
								1%	2%	23%	2%	22%	5%
							grade 7 events	360034	327265	296380	347767	272521	378971
								85%	83%	45%	82%	48%	73%

2.2 Compared Parameters

Parameter	Planned	Actual	Parameter	Planned	Actual
Instrument	ACIS	ACIS	Obspar format version number	7	7
Detector	ACIS-235678	ACIS-235678	Obspar file type	PREDICTED	ACTUAL
Grating	NONE	NONE	Obspar update status	NONE	UPDATED
Data mode	FAINT	FAINT	Number of optional ACIS chips dropped	0	0
Observation mode	POINTING	POINTING	On-chip summing requested	N	N
[deg] Pointing RA	5.031063	5.016785379358055	Subarray requested	NONE	NONE
[deg] Pointing Dec	59.305496	59.27924743540315	Alternating exposures requested	N	N
[deg] Pointing Roll	223.535265	223.7041673594937	[s] Primary exposure time	0.000000	3.2
[mm] SIM focus pos	-0.684267	-0.6828225247311905			
[mm] SIM defocus	0	0.001444936568705701			
[mm] SIM translation stage pos	-190.132523	-190.1425803651734			
[mm] SIM translation stage offset	0	0.01005778216563158			
[s] Observation start time (MET)	279071579.184000	279070433.90969			
Observation start date	2006-11-04T23:51:54	2006-11-04T23:33:53			
[s] Observation end time (MET)	279115579.184000	279116483.57437			
Observation end date	2006-11-05T12:05:14	2006-11-05T12:21:23			
Read mode	TIMED	TIMED			

2.3 Aspect



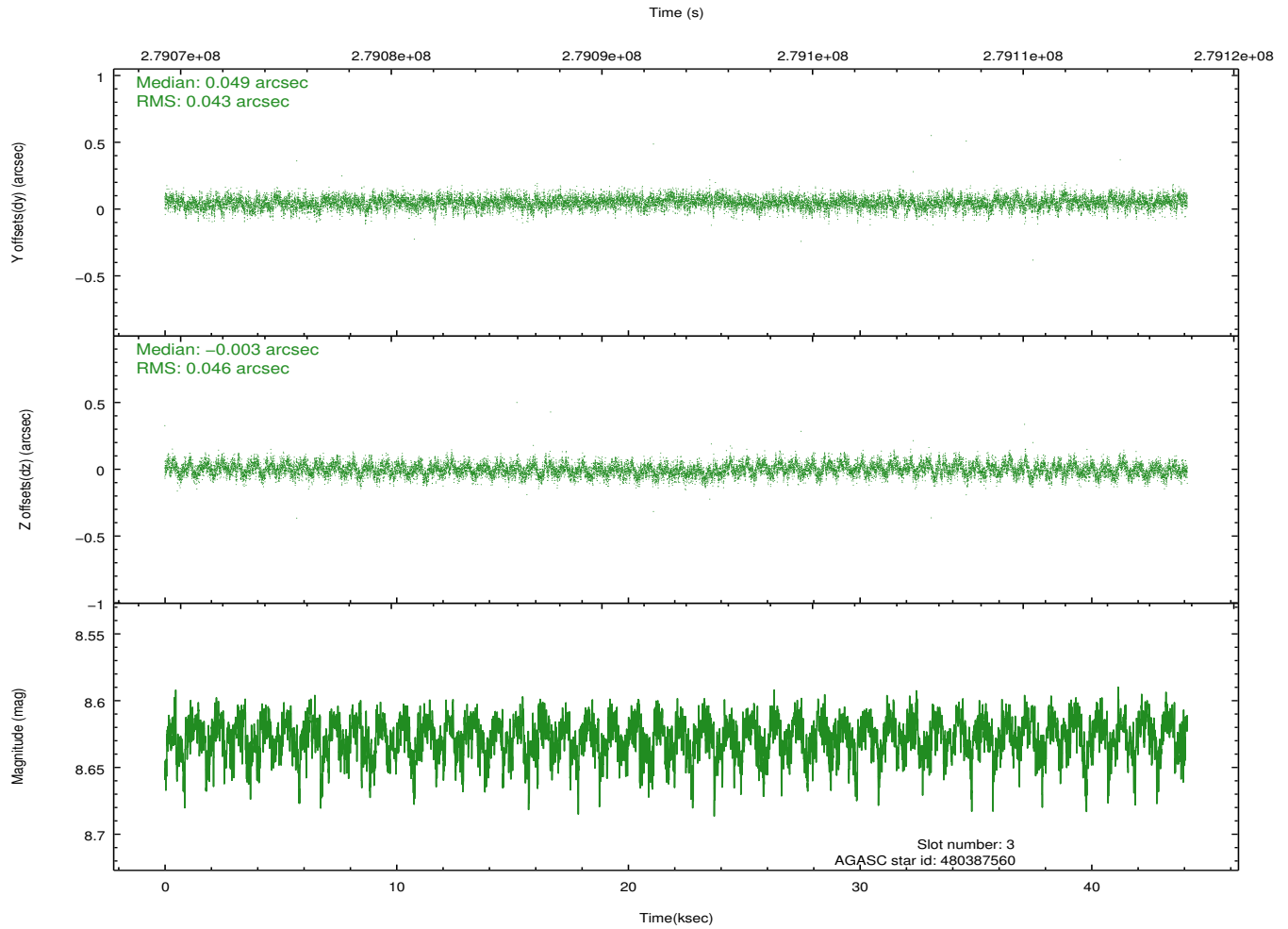
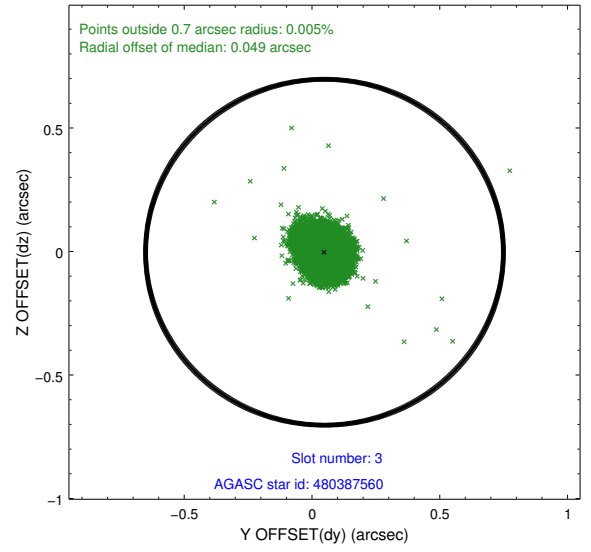
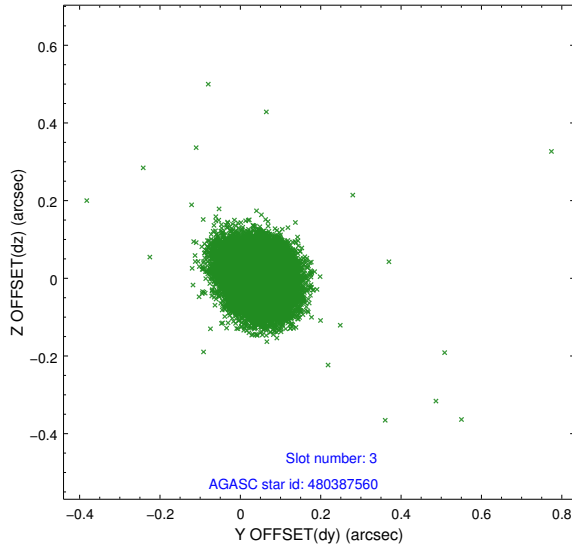


Slot Statistics

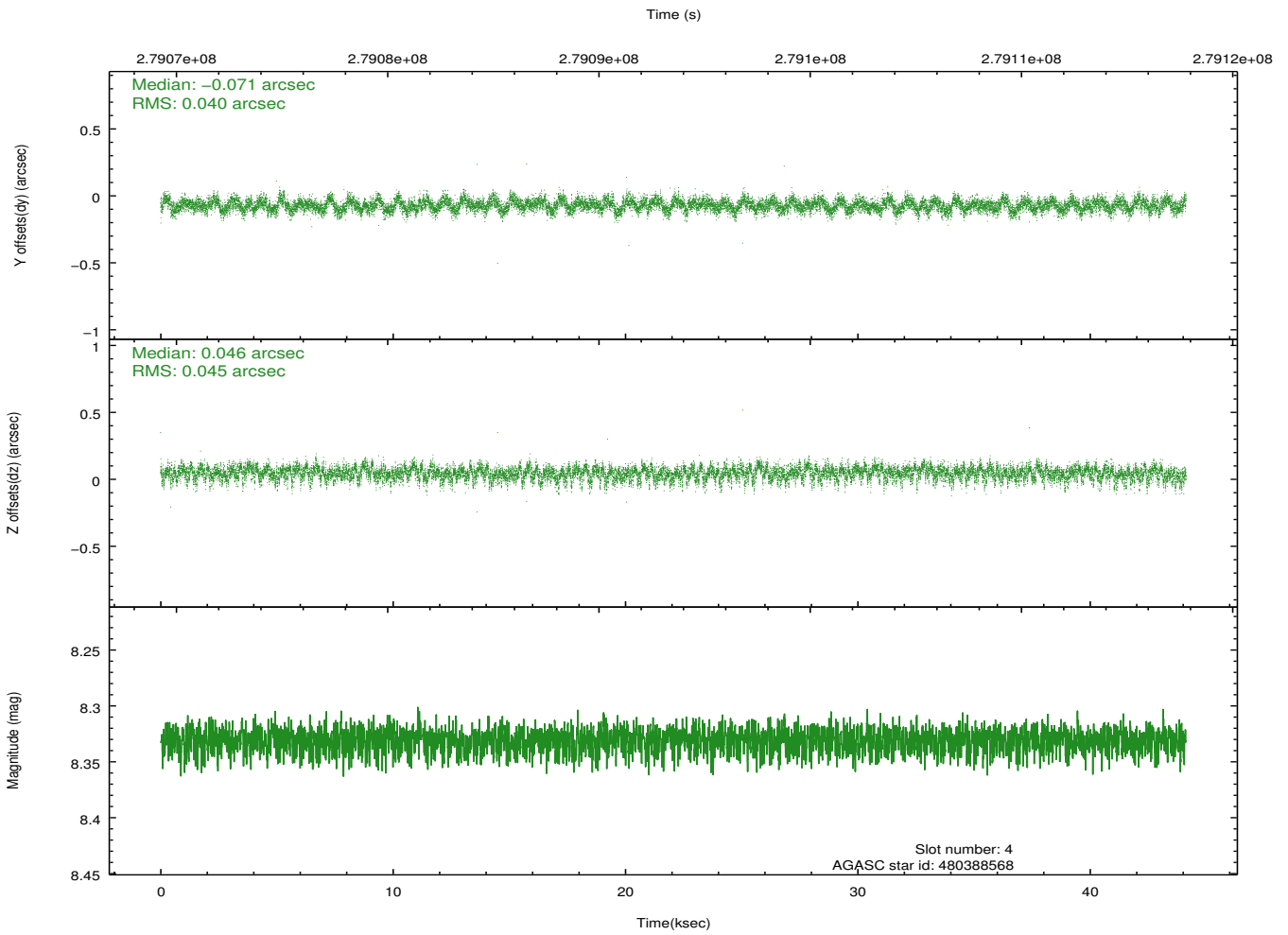
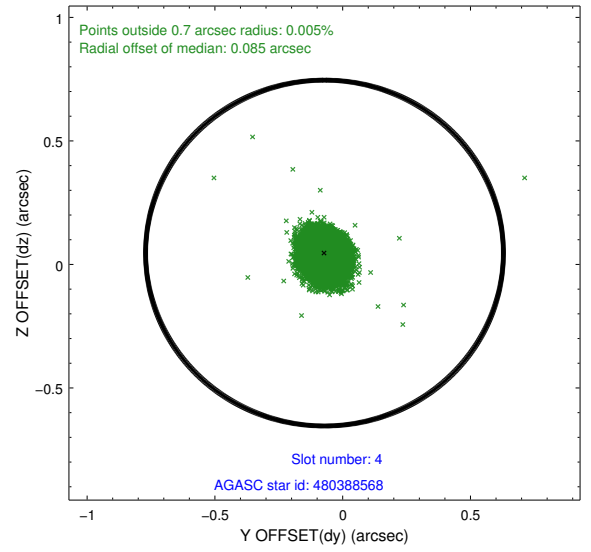
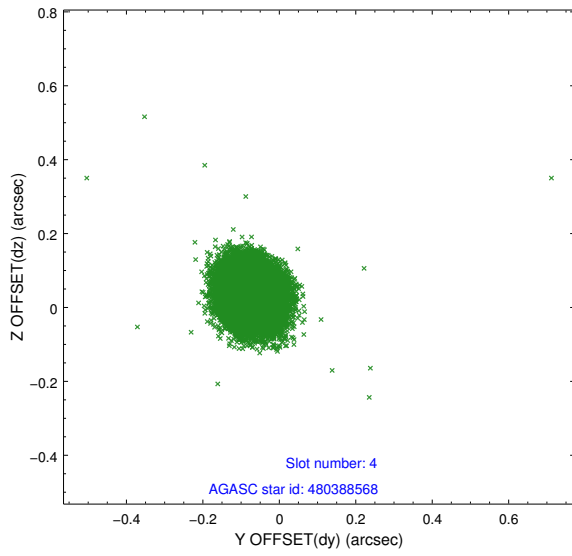
slot	status	id	mag	n_pts	med_dy	med_dz	dr1	dr2	ra	dec	mean_y	mean_z
0	FID	ACIS-S-2	7.11	10765	-0.009	-0.035	0.010	0.035	0.000000	0.000000	-760.92	-1732.50
1	FID	ACIS-S-5	7.24	10765	-0.073	0.000	0.033	0.050	0.000000	0.000000	-1814.14	169.49
2	FID	ACIS-S-6	7.35	10763	0.058	0.040	0.034	0.053	0.000000	0.000000	400.71	813.47
3	GUIDE	480387560	8.63	21520	0.049	-0.003	0.066	0.108	3.486116	59.428342	1724.11	-2292.17
4	GUIDE	480388568	8.33	21517	-0.071	0.046	0.063	0.104	3.952528	59.440255	1086.49	-1722.59
5	GUIDE	480382592	8.58	21522	-0.063	0.053	0.065	0.106	3.877912	59.161998	1886.25	-1103.99
6	GUIDE	480393824	9.30	21479	0.090	-0.076	0.106	0.169	6.515624	59.105010	-1513.13	2391.13
7	GUIDE	480388656	8.91	21519	-0.007	-0.020	0.073	0.120	6.593066	59.181927	-1805.37	2282.37

2.4 Star Slots

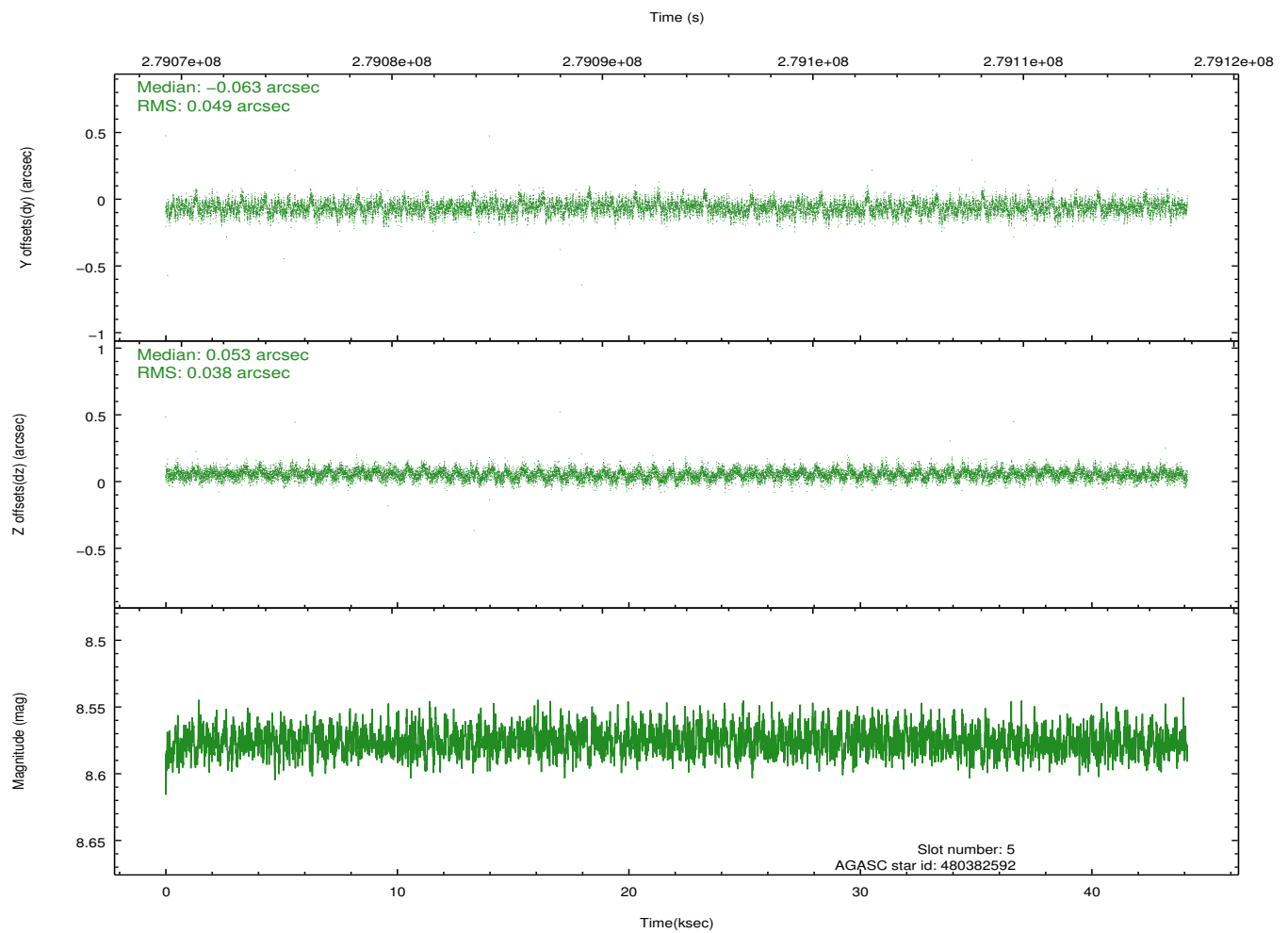
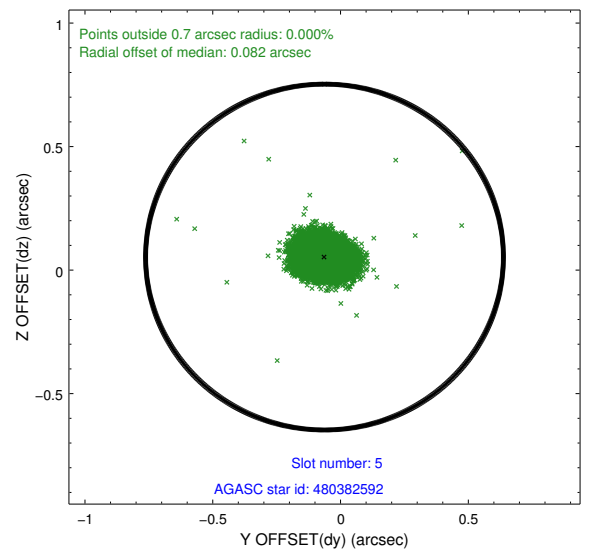
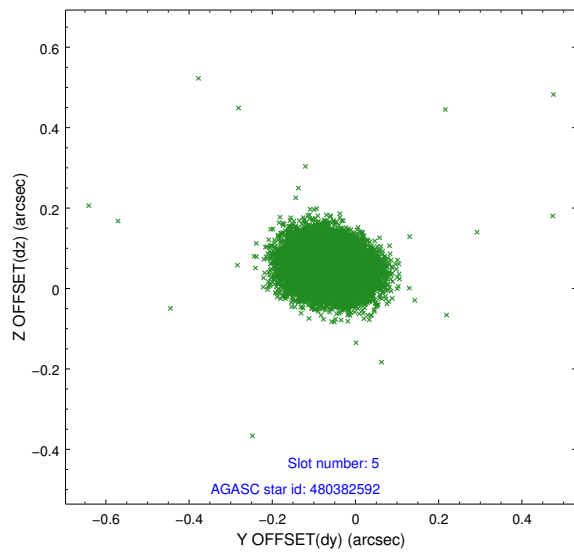
2.4.1 Slot 3



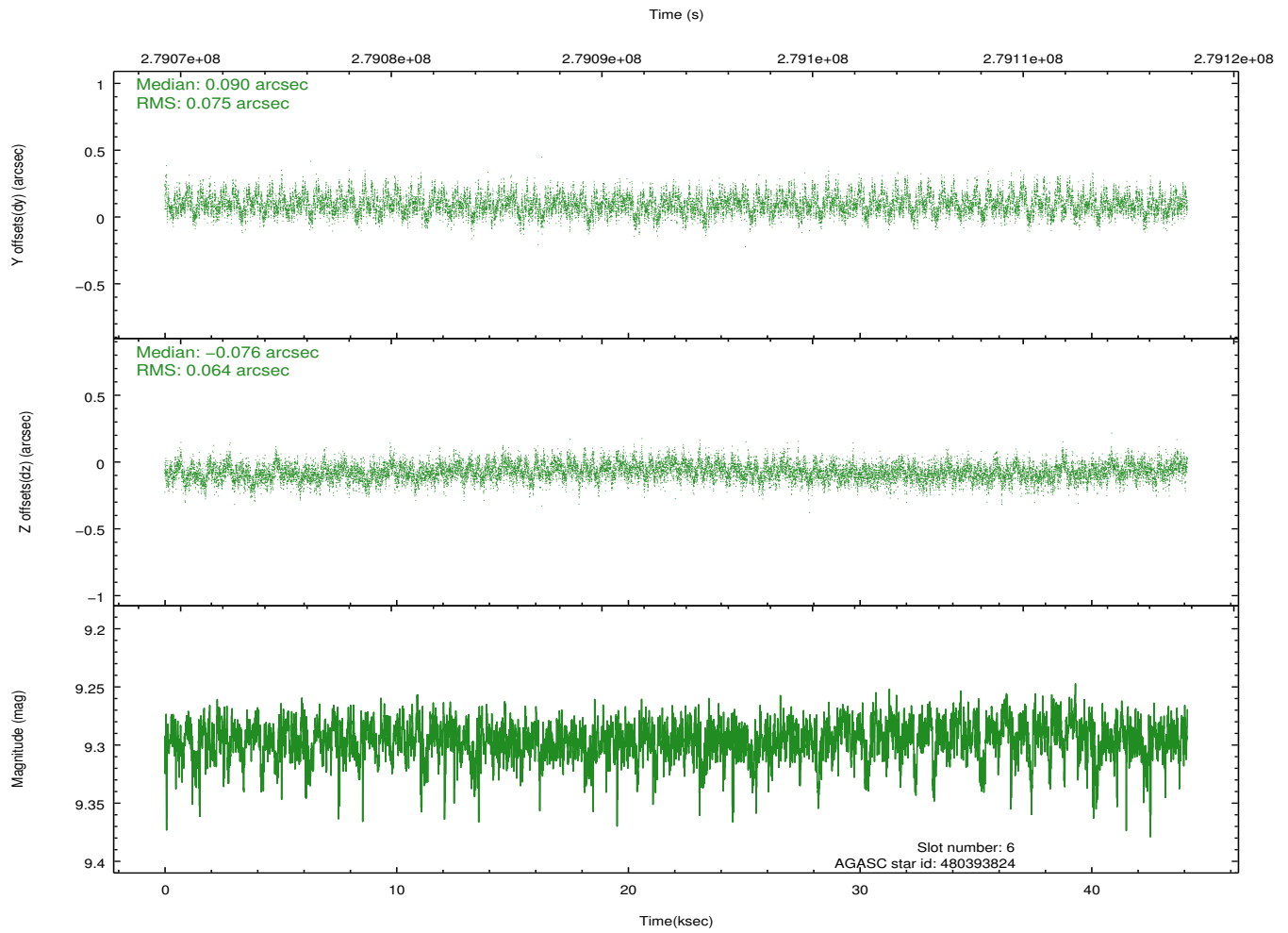
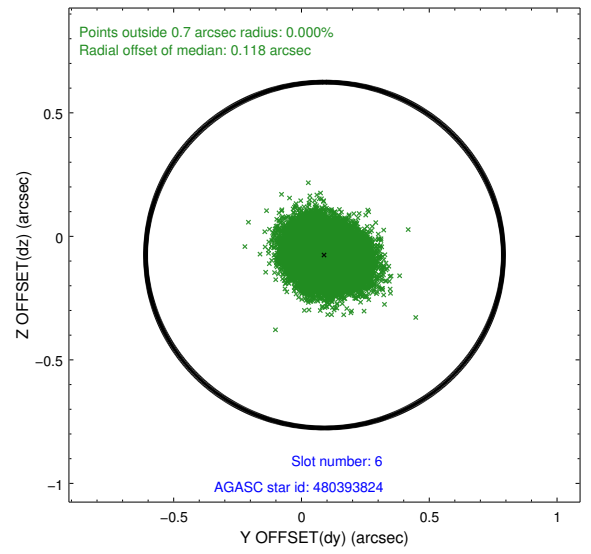
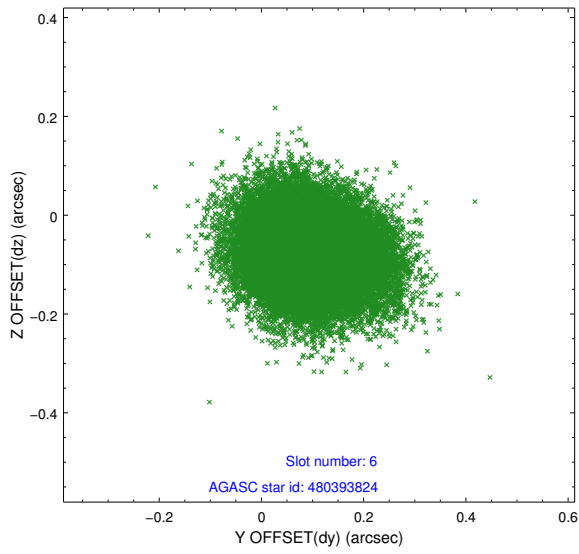
2.4.2 Slot 4



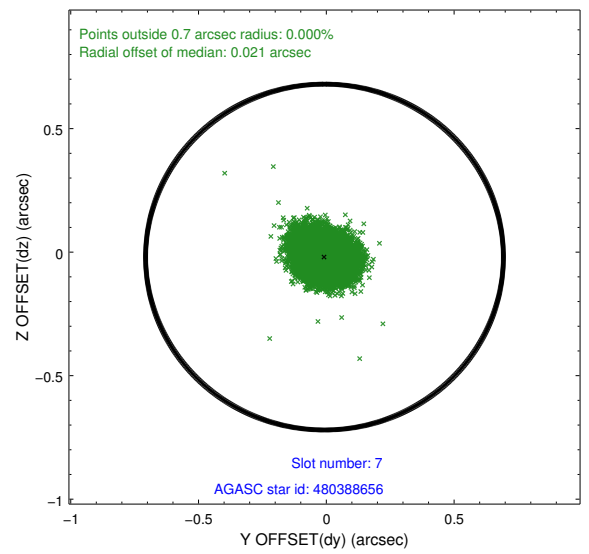
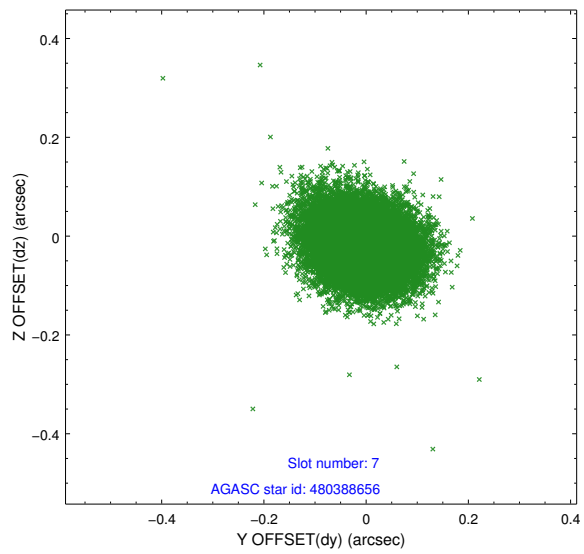
2.4.3 Slot 5



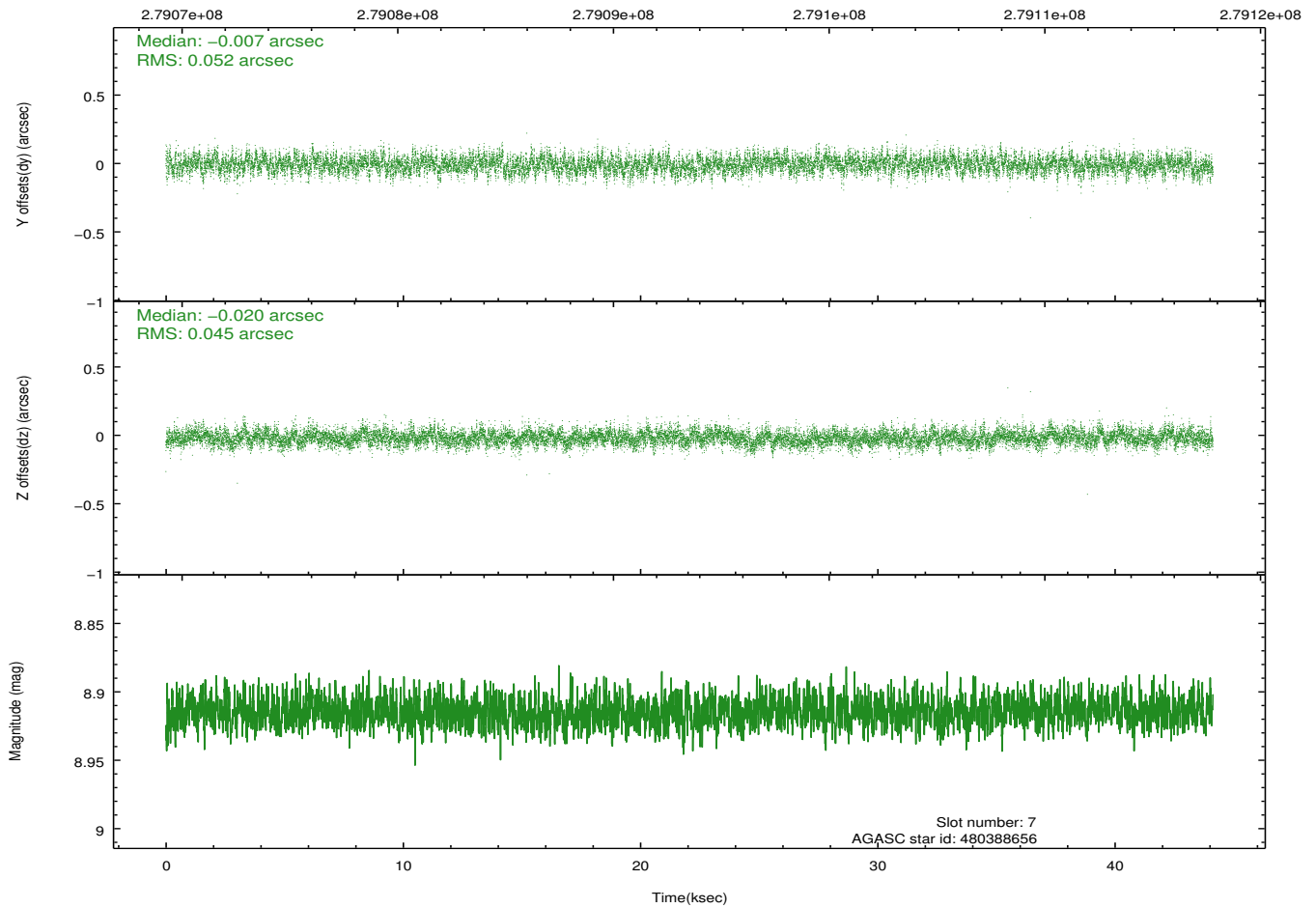
2.4.4 Slot 6



2.4.5 Slot 7

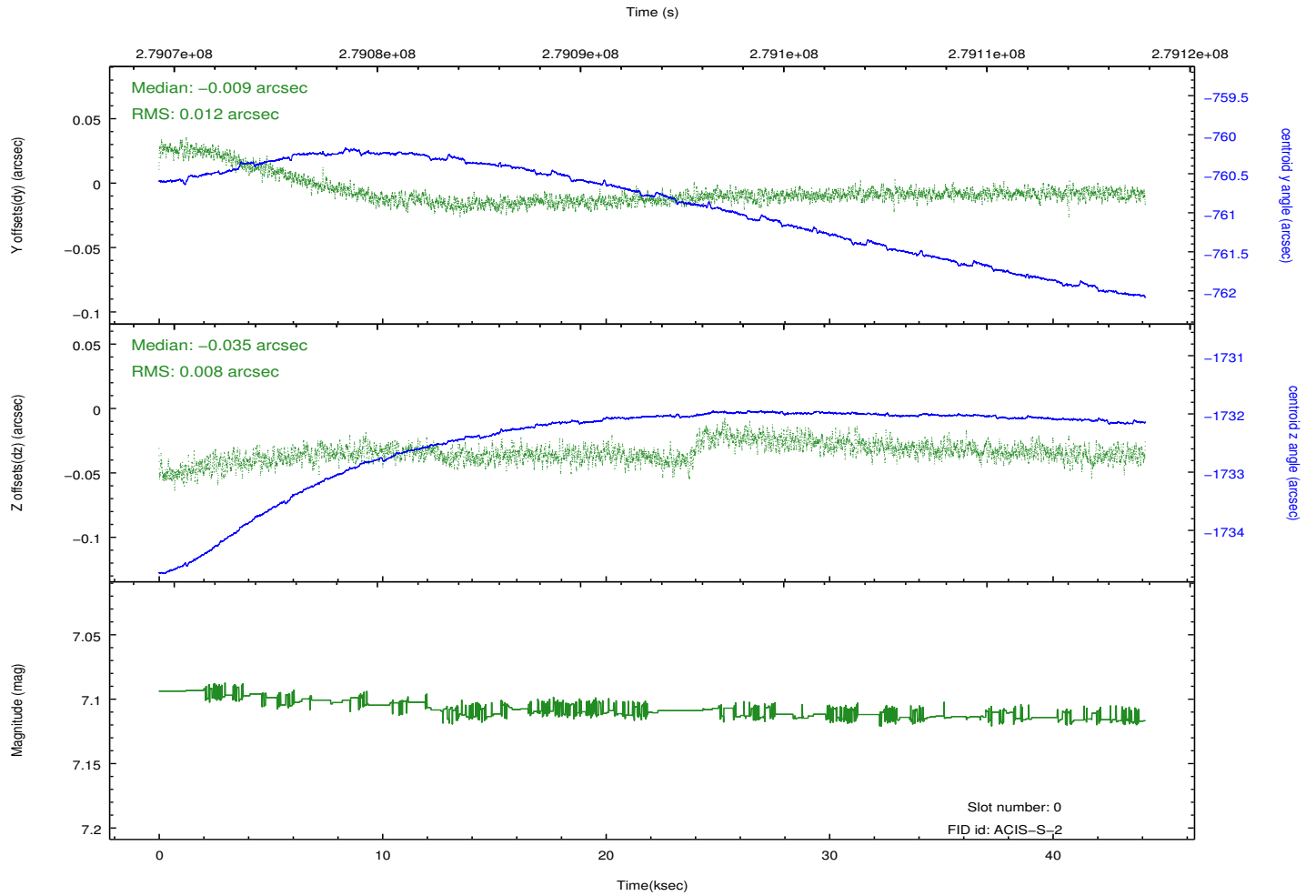
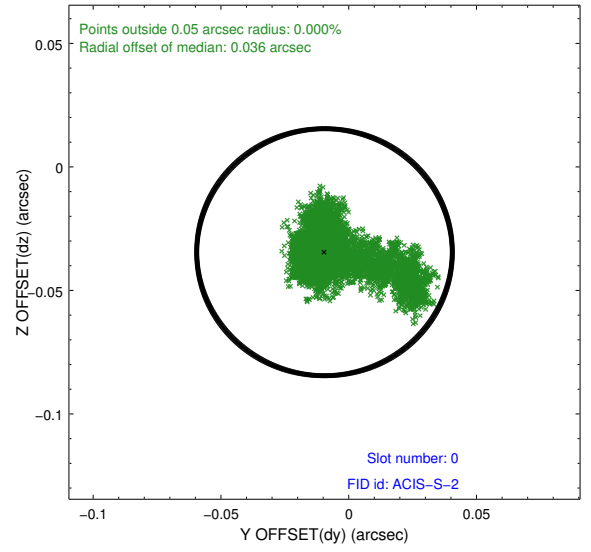
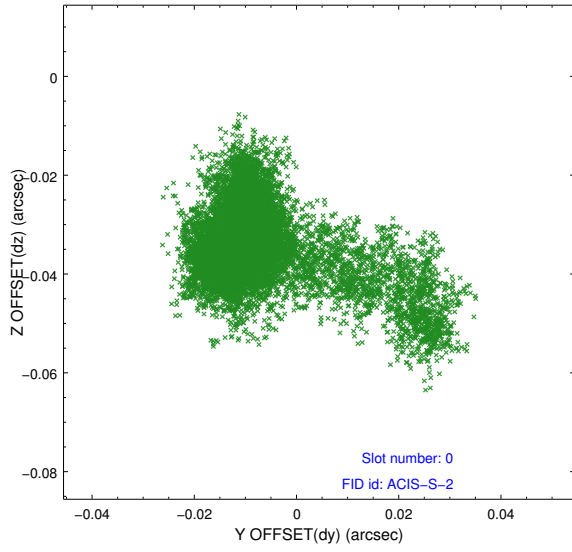


Time (s)

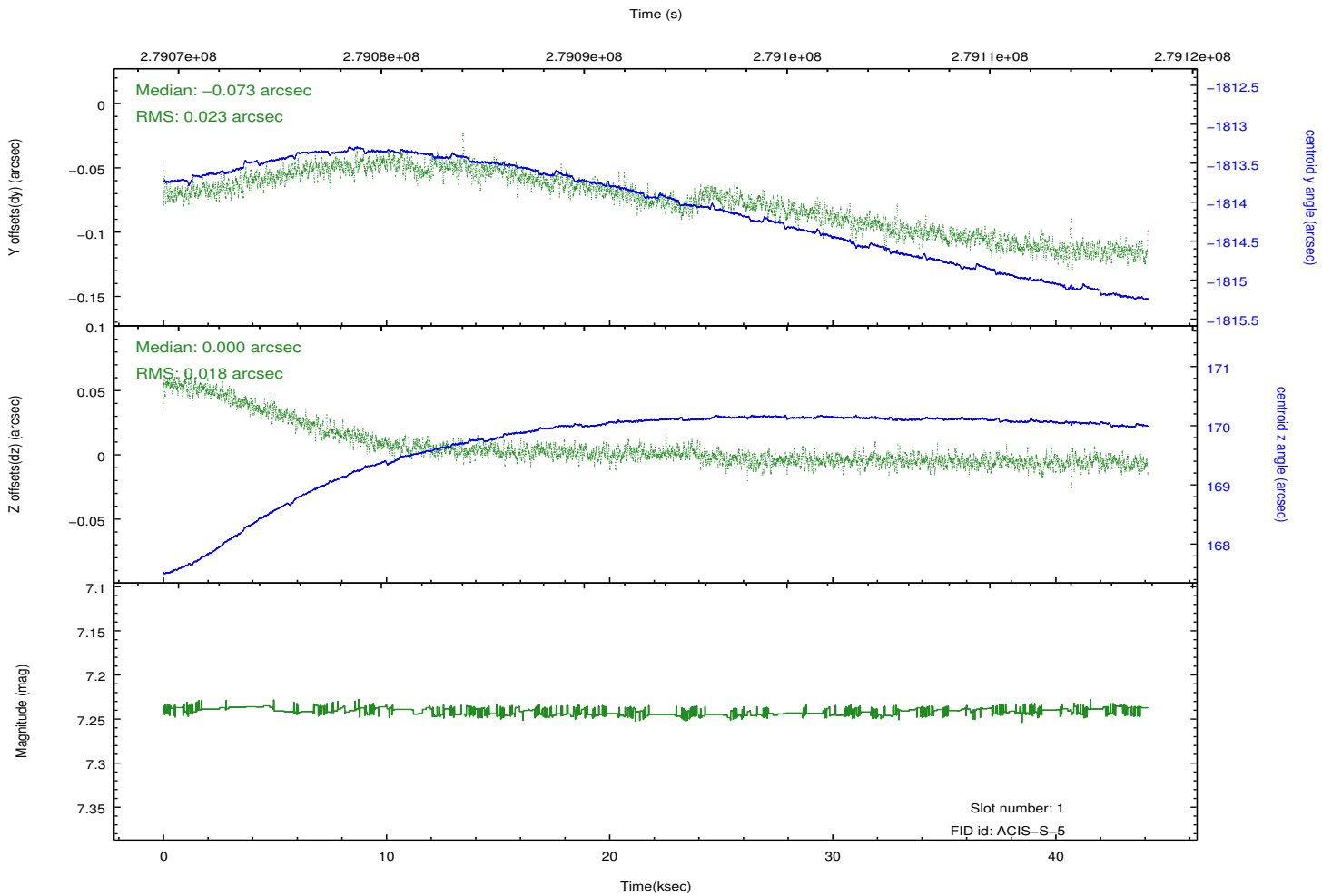
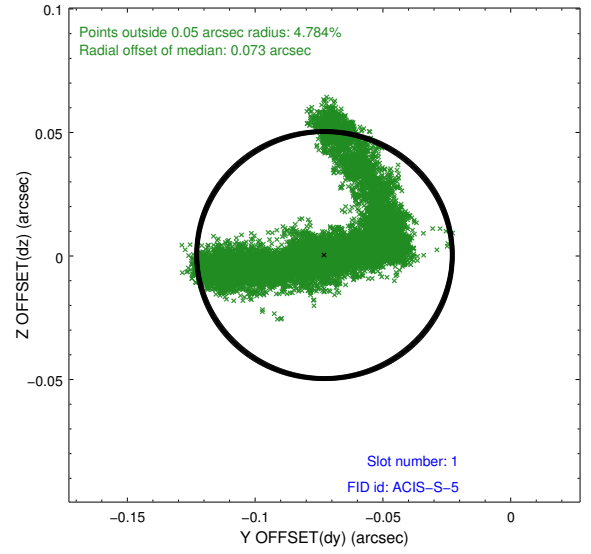
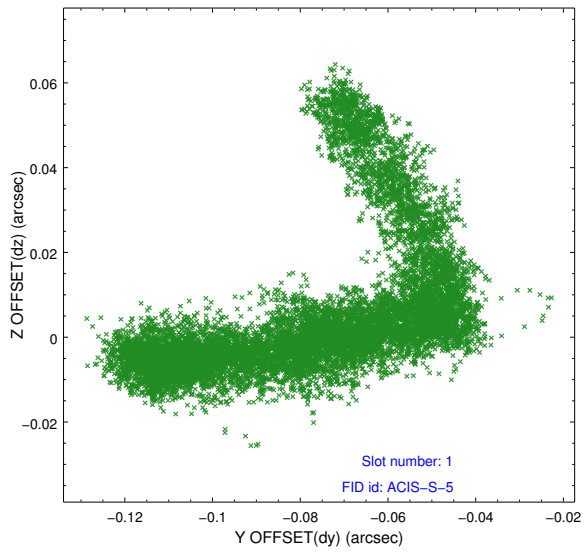


2.5 FID Slots

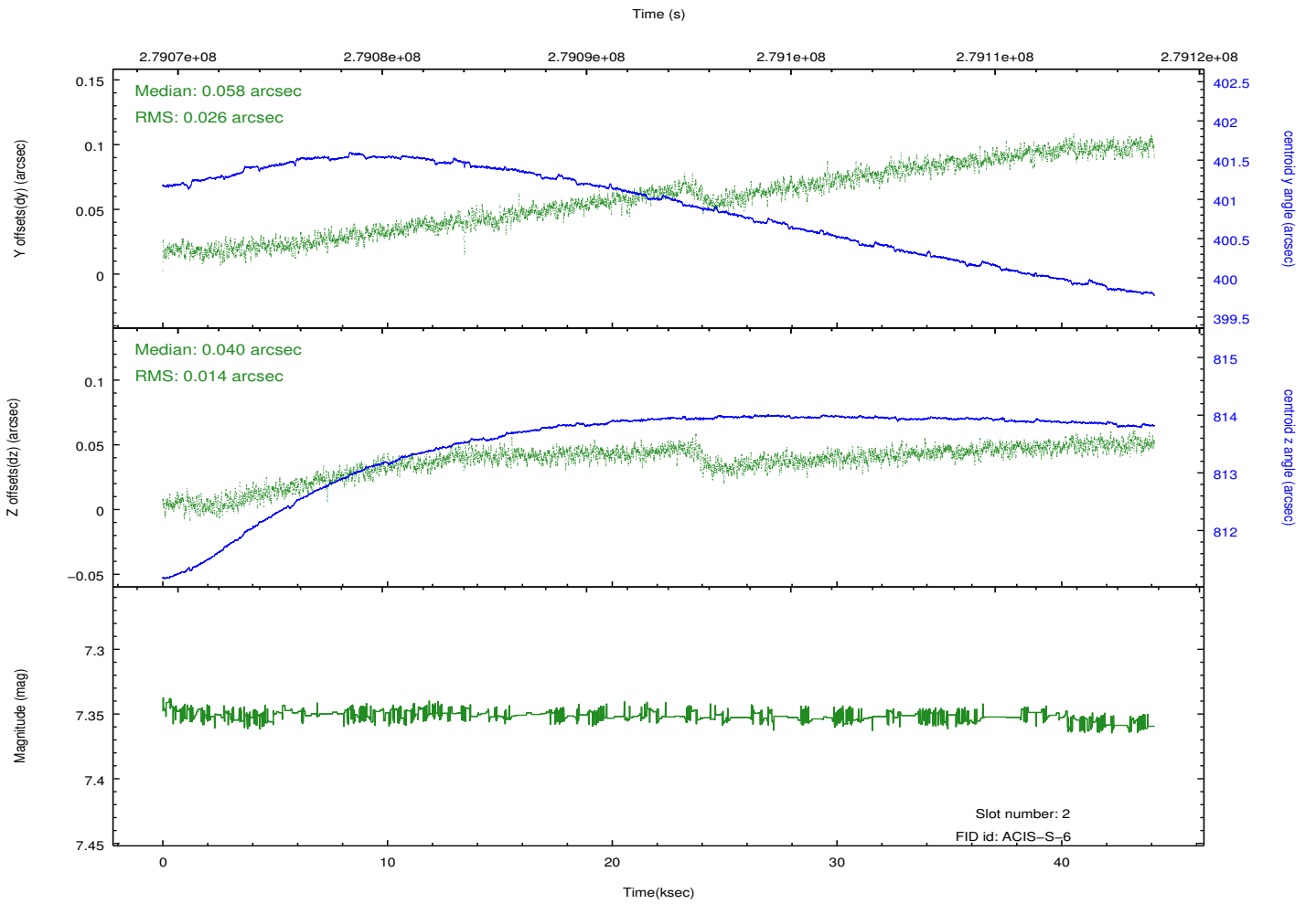
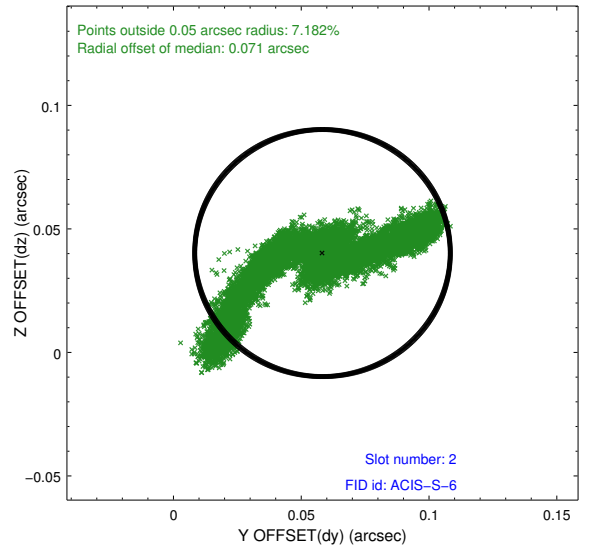
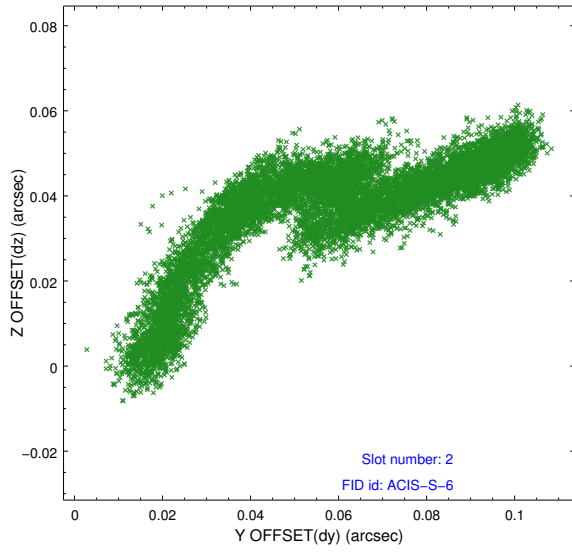
2.5.1 Slot 0



2.5.2 Slot 1



2.5.3 Slot 2



A Summary

A.1 Status

V&V Scientist	Beth Sundheim
V&V Date (YYYY-MM-DD)	2012.04.16
V&V Edition	1
V&V Disposition and Status	OK
V&V Charge Time	44.1279998

A.2 Comments