

V&V Reference Report

L2 ASCDS Version : 8.4.3.1

Observation 8478 - L2 Version 2
Chandra X-Ray Center

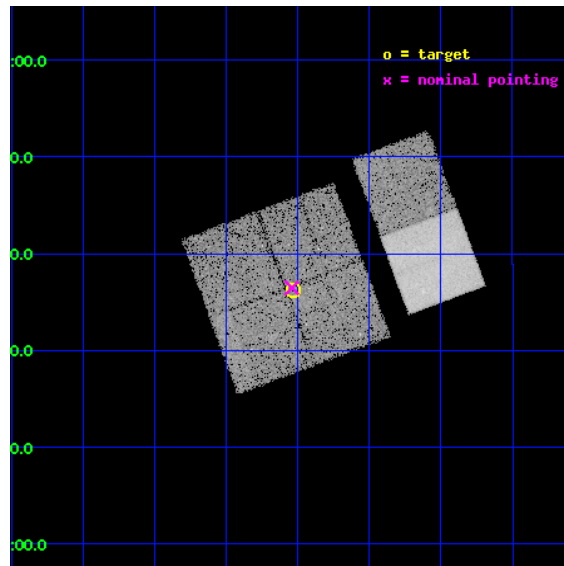
L2 Processing Date : Apr 14 2012

Contents

1	Front	2
2	OBI	3
2.1	OBI	3
2.1.1	Images	3
2.1.2	Bias	3
2.1.3	Parameters	4
2.1.4	Events	4
2.2	Compared Parameters	5
2.3	Aspect	6
2.4	Star Slots	9
2.4.1	Slot 3	9
2.4.2	Slot 4	10
2.4.3	Slot 5	11
2.4.4	Slot 6	12
2.4.5	Slot 7	13
2.5	FID Slots	14
2.5.1	Slot 0	14
2.5.2	Slot 1	15
2.5.3	Slot 2	16
A	Summary	17
A.1	Status	17
A.2	Comments	17

1 Front

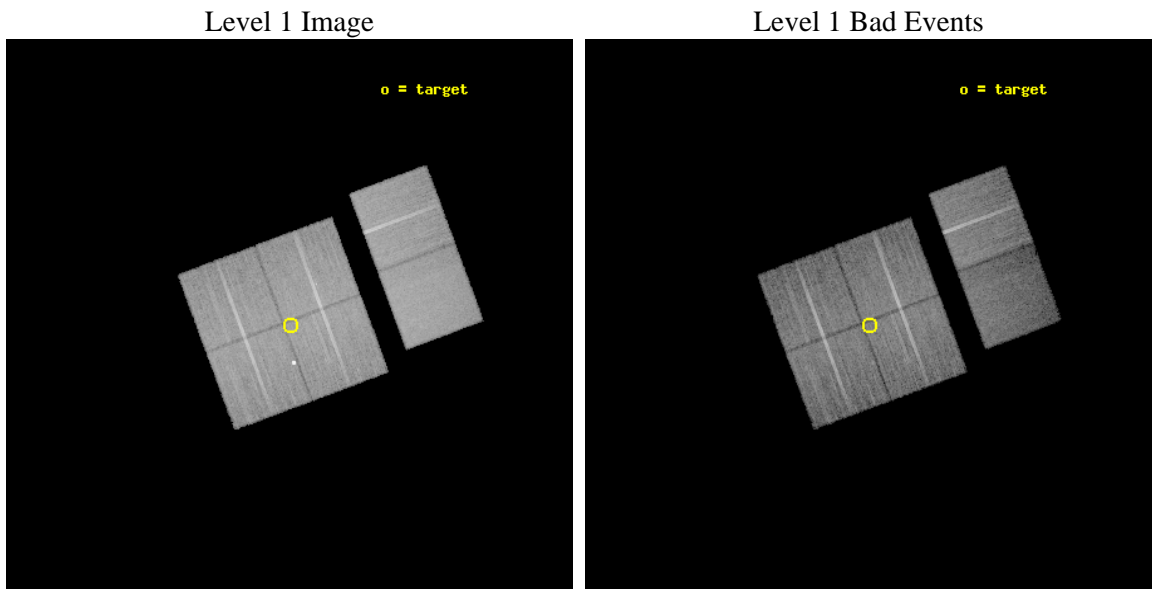
seq_num	900543	Sequence number
obs_id	8478	Observation id
title	THE CHANDRA-COSMOS SURVEY	Proposal title
observer	Dr. Martin Elvis	Principal investigator
object	C-COSMOS1-6	Source name
dtcycle	0	
cycle	P	events from which exps? Prim/Second/Both
ra_targ	149.882154	Observer's specified target RA [deg]
dec_targ	2.604606	Observer's specified target Dec [deg]
ra_nom	149.88534179496	Nominal RA [deg]
dec_nom	2.6079748630523	Nominal Dec [deg]
roll_nom	69.608560138345	Nominal Roll [deg]
revision	2	Processing version of data
ontime	18214.317961633	Sum of GTIs [s]
livetime	17983.677300257	Livetime [s]
ontime0	18220.799932182	Sum of GTIs [s]
ontime1	18220.799932182	Sum of GTIs [s]
ontime2	18220.799932182	Sum of GTIs [s]
ontime3	18214.317961633	Sum of GTIs [s]
ontime6	18185.149019957	Sum of GTIs [s]
ontime7	18220.799932182	Sum of GTIs [s]
l2events	123055	Number of level 2 events



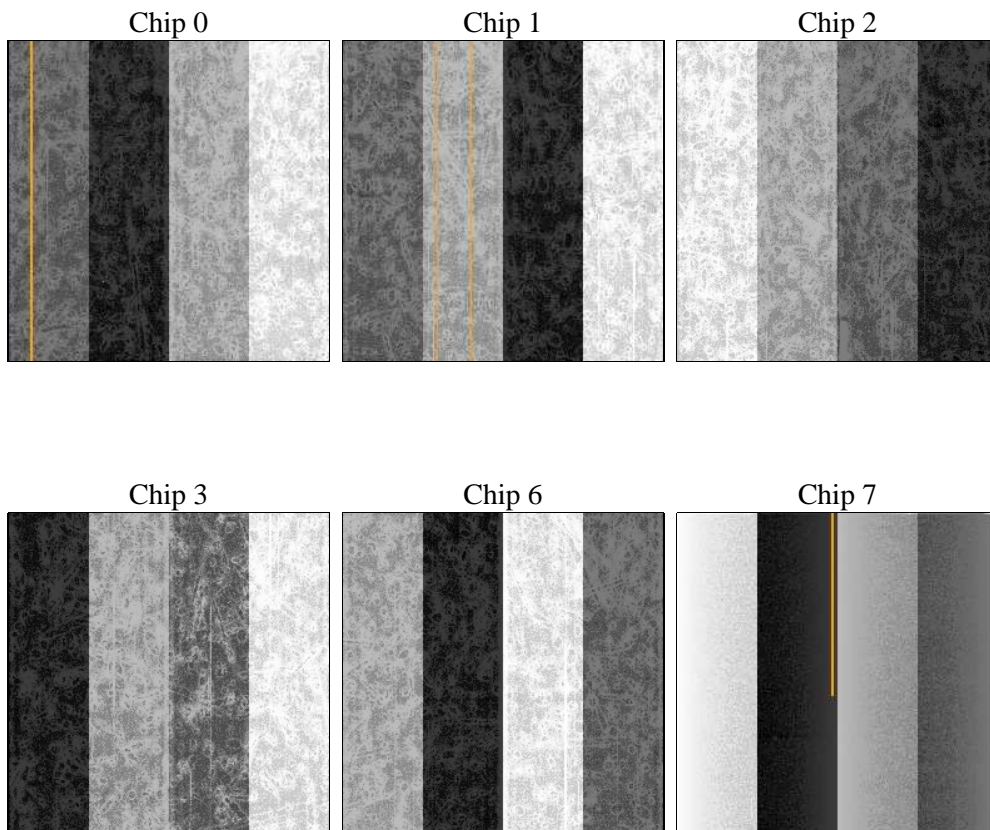
2 OBI

2.1 OBI

2.1.1 Images



2.1.2 Bias



2.1.3 Parameters

obi_num	0	Obi number	sched_exp_time	18178.369000	[s] Scheduled observation exposure time
ascdsver	8.4.3.1	Processing system revision	ontime	18214.317961633	Sum of GTIs [s]
caldbver	4.4.9	 	ontime0	18220.799932182	Sum of GTIs [s]
date	2012-04-14T04:44:08	Date and time of file creation	ontime1	18220.799932182	Sum of GTIs [s]
revision	2	Processing version of data	ontime2	18220.799932182	Sum of GTIs [s]
			ontime3	18214.317961633	Sum of GTIs [s]
			ontime6	18185.149019957	Sum of GTIs [s]
			ontime7	18220.799932182	Sum of GTIs [s]
			l1events	845451	Number of level 1 events

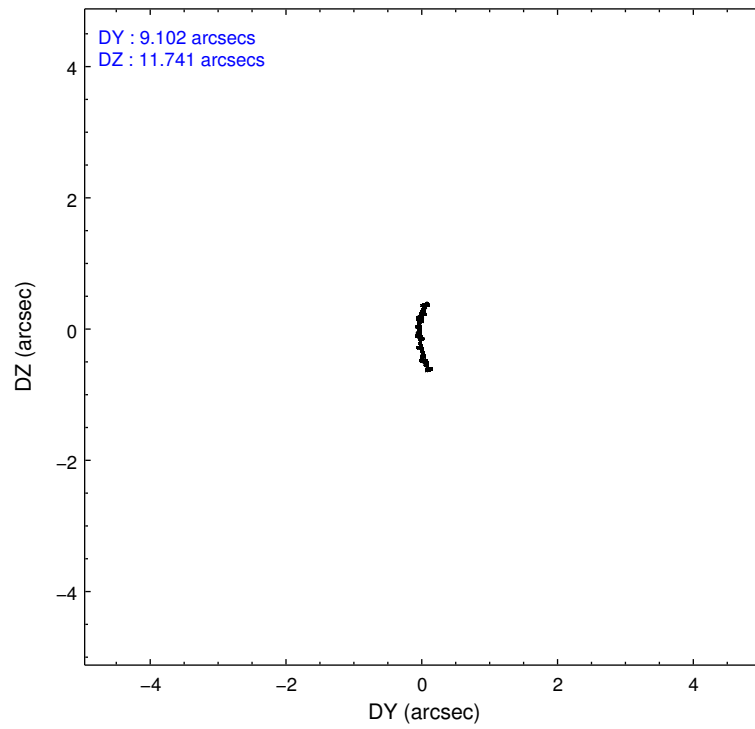
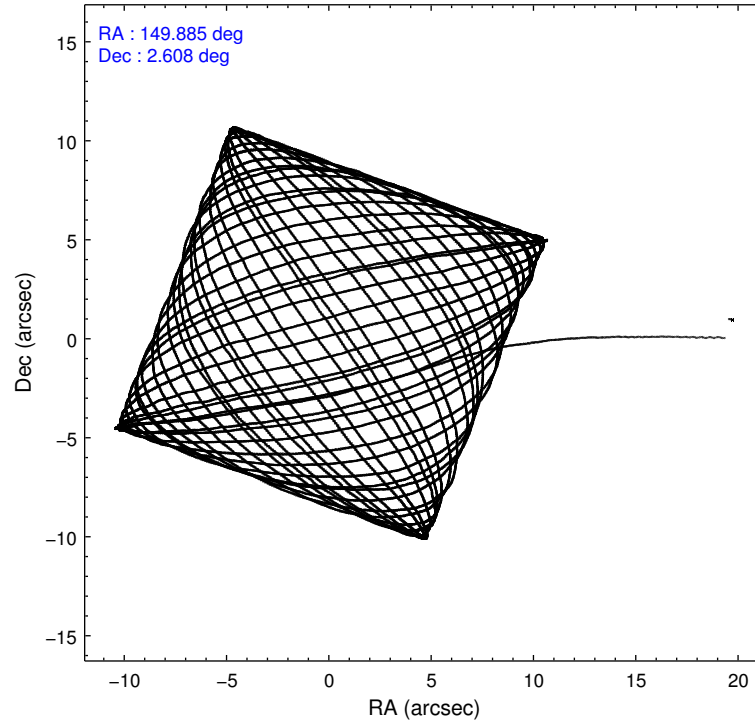
2.1.4 Events

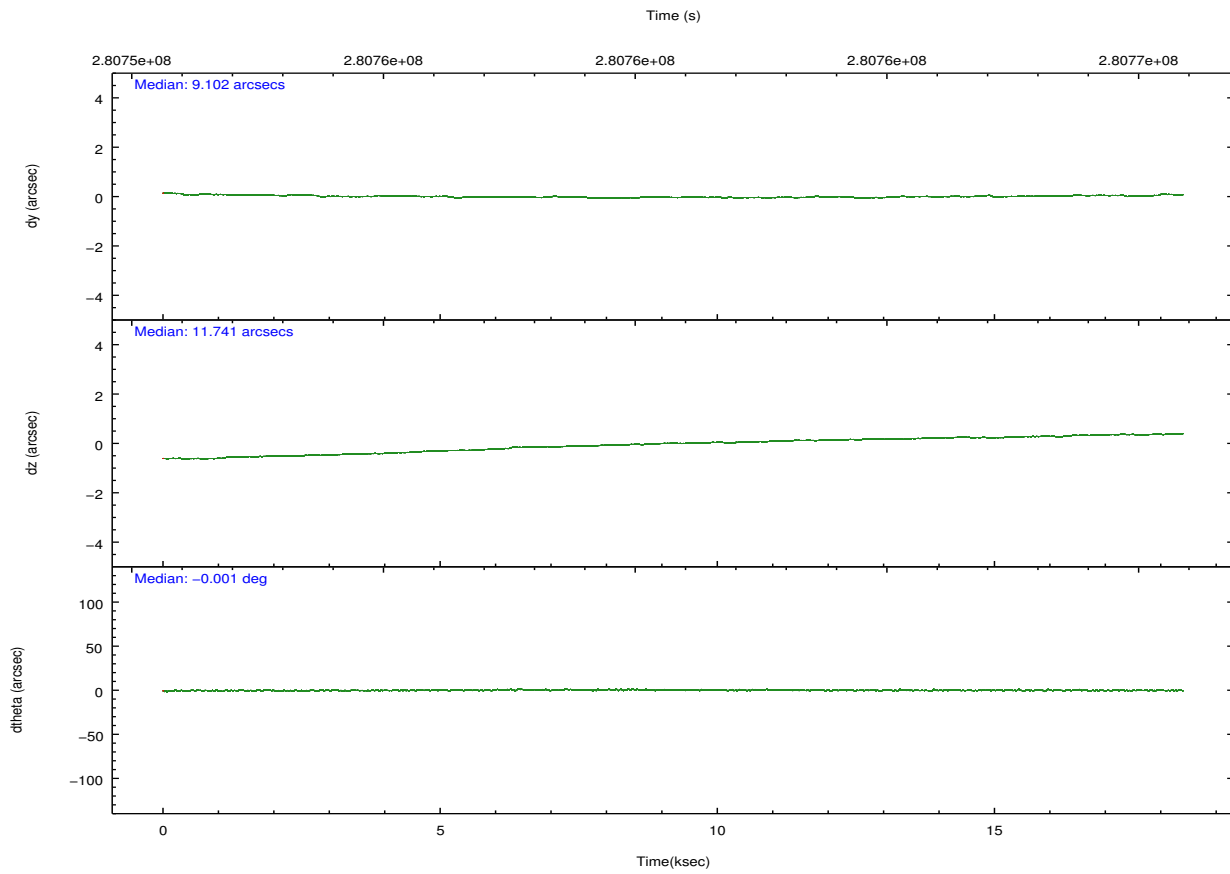
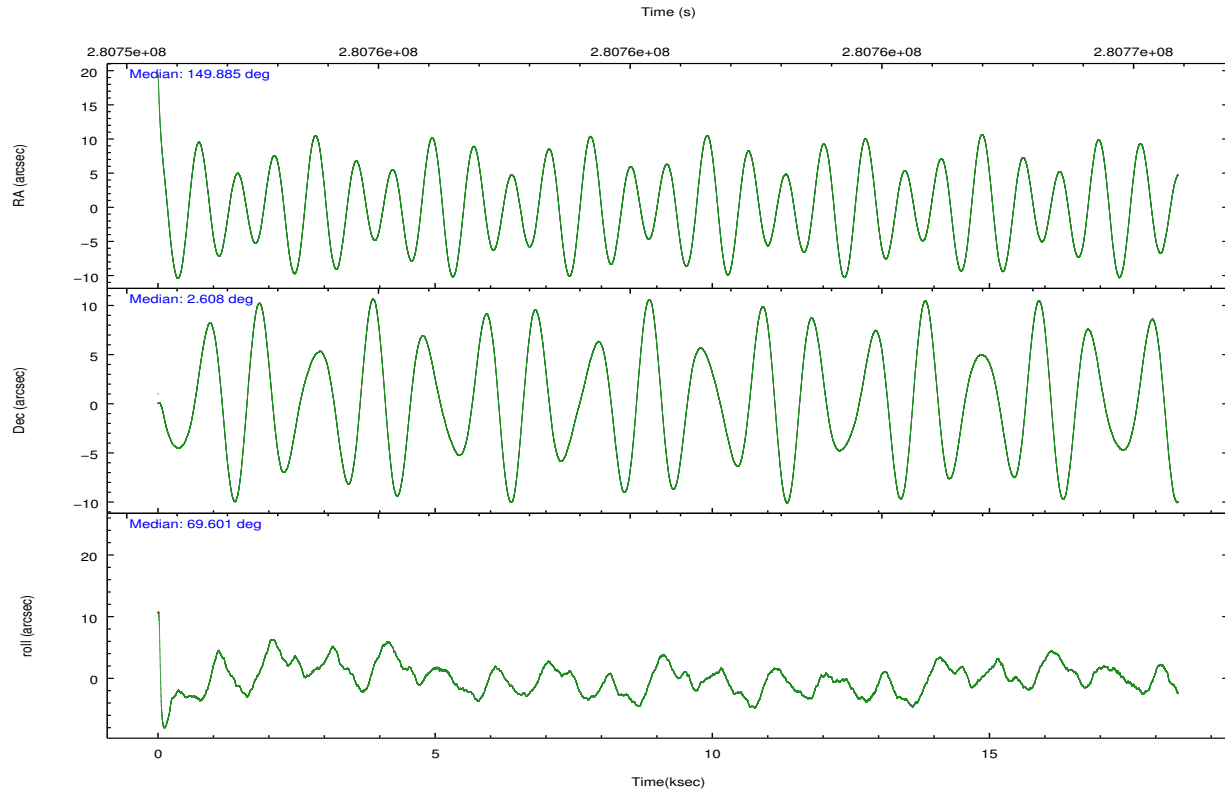
	ccd 0	ccd 1	ccd 2	ccd 3	ccd 6	ccd 7		ccd 0	ccd 1	ccd 2	ccd 3	ccd 6	ccd 7
level 1 events	129359	136969	141182	140528	146302	151111	grade 0 events	4672	10706	4853	4393	4707	6289
rejected events	116077	116687	127995	127996	132506	82181		3%	7%	3%	3%	3%	4%
rejected %	89%	85%	90%	91%	90%	54%	grade 1 events	82	107	77	76	62	165
								0%	0%	0%	0%	0%	0%
							grade 2 events	3169	3396	3119	2738	3024	13630
								2%	2%	2%	1%	2%	9%
							grade 3 events	1539	1600	1477	1443	1557	6392
								1%	1%	1%	1%	1%	4%
							grade 4 events	1414	1666	1351	1430	1532	6101
								1%	1%	0%	1%	1%	4%
							grade 5 events	4522	5188	4412	5295	5463	15647
								3%	3%	3%	3%	3%	10%
							grade 6 events	2491	2923	2396	2534	2979	36560
								1%	2%	1%	1%	2%	24%
							grade 7 events	111470	111383	123497	122619	126978	66327
								86%	81%	87%	87%	86%	43%

2.2 Compared Parameters

Parameter	Planned	Actual	Parameter	Planned	Actual
Instrument	ACIS	ACIS	Obspar format version number	7	7
Detector	ACIS-012367	ACIS-012367	Obspar file type	PREDICTED	ACTUAL
Grating	NONE	NONE	Obspar update status	NONE	UPDATED
Data mode	VFAINT	VFAINT	CCD I0 on	Y	Y
Observation mode	POINTING	POINTING	CCD I1 on	Y	Y
[deg] Pointing RA	149.890030	149.8853417949624	CCD I2 on	Y	Y
[deg] Pointing Dec	2.580994	2.607974863052315	CCD I3 on	Y	Y
[deg] Pointing Roll	69.399646	69.60856013834461	CCD S0 on	N	N
[mm] SIM focus pos	-0.782348	-0.7809083437167272	CCD S1 on	N	N
[mm] SIM defocus	0	0.001439871863259334	CCD S2 on	O1	Y
[mm] SIM translation stage pos	-233.592463	-233.5874344608287	CCD S3 on	O2	Y
[mm] SIM translation stage offset	0	-0.005018542100998502	CCD S4 on	N	N
[s] Observation start time (MET)	280751774.184000	280750731.86404	CCD S5 on	N	N
Observation start date	2006-11-24T10:35:09	2006-11-24T10:18:51	Number of optional ACIS chips dropped	0	0
[s] Observation end time (MET)	280769952.184000	280770182.77746	On-chip summing requested	N	N
Observation end date	2006-11-24T15:38:07	2006-11-24T15:43:02	Subarray requested	NONE	NONE
Read mode	TIMED	TIMED	Alternating exposures requested	N	N
			[s] Primary exposure time	0.000000	3.2

2.3 Aspect



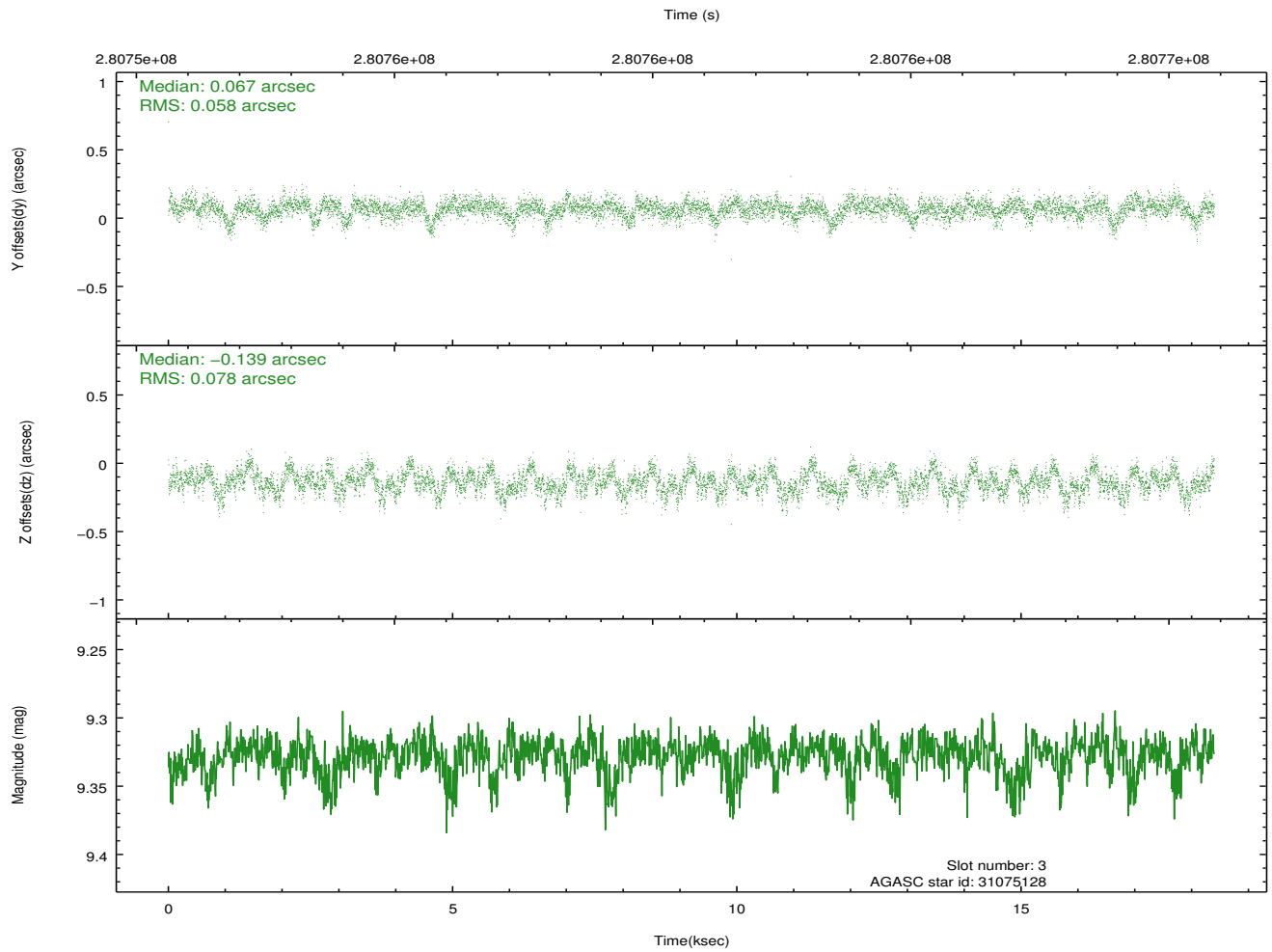
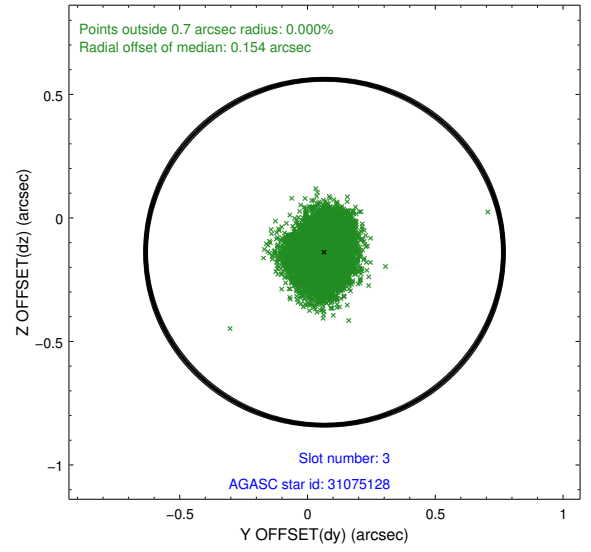
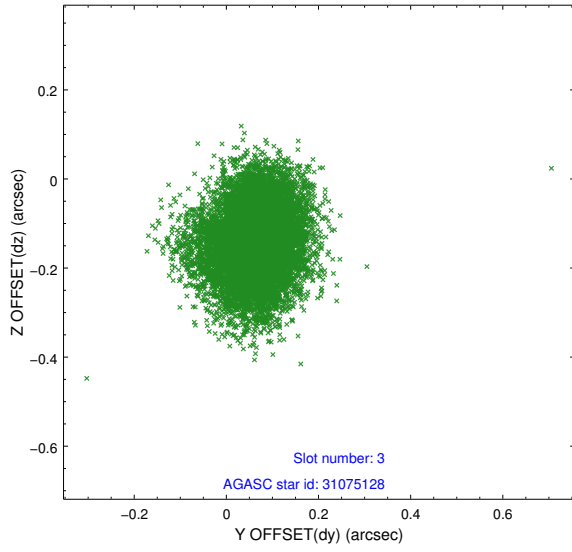


Slot Statistics

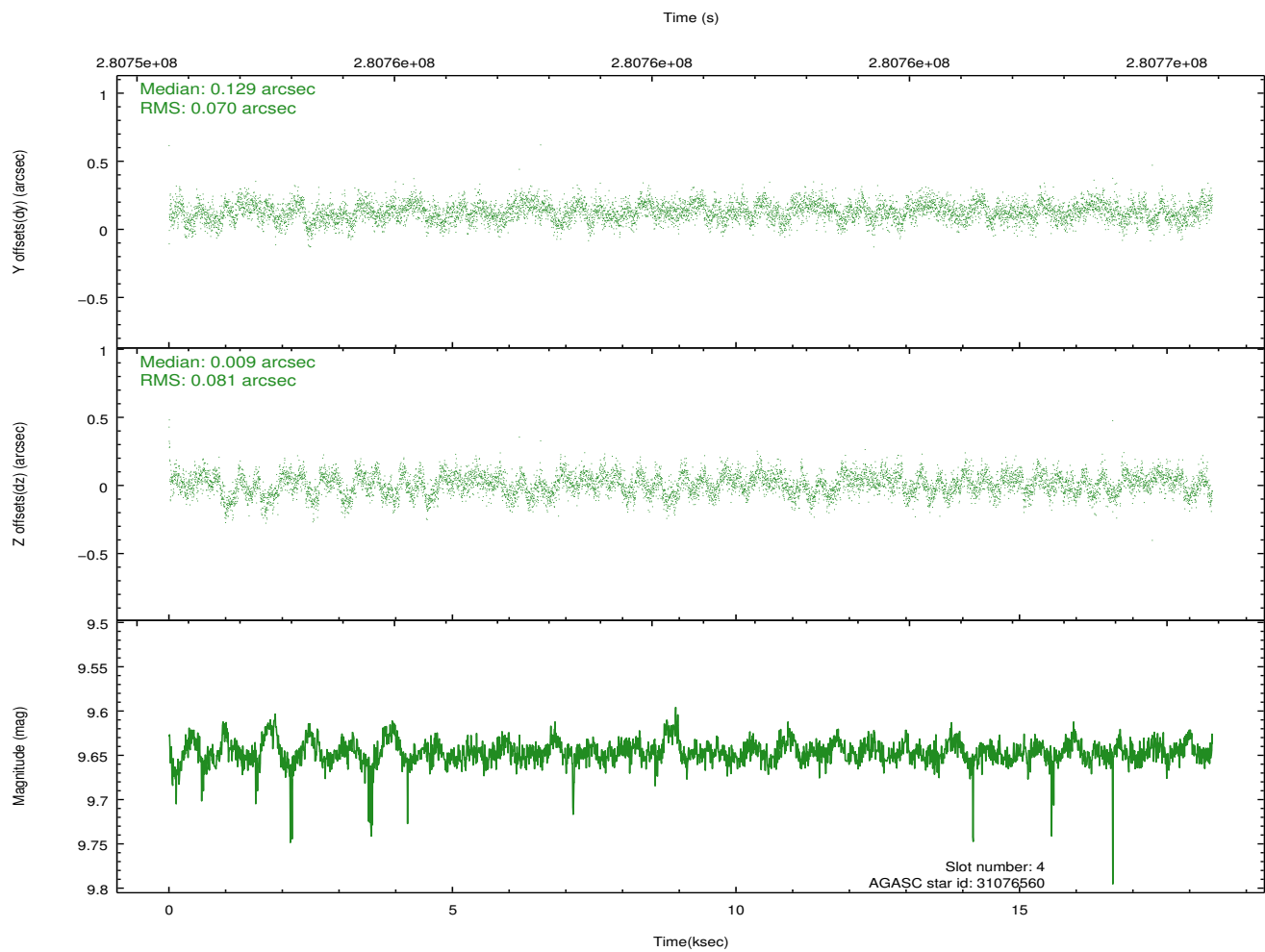
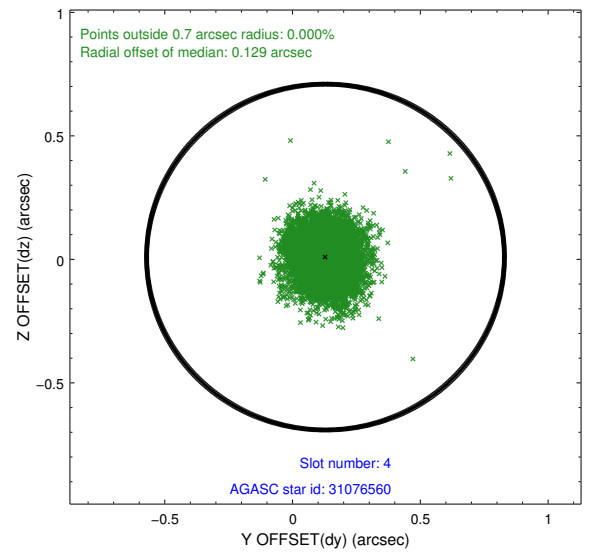
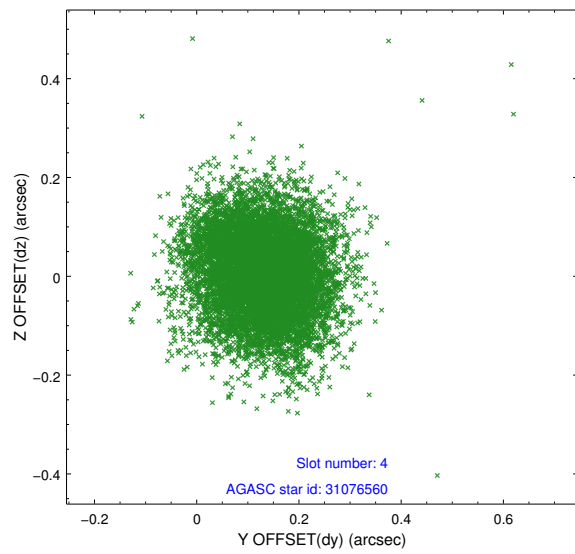
slot	status	id	mag	n_pts	med_dy	med_dz	dr1	dr2	ra	dec	mean_y	mean_z
0	FID	ACIS-I-1	7.25	4486	0.065	-0.044	0.009	0.014	0.000000	0.000000	930.56	-835.25
1	FID	ACIS-I-5	7.23	4482	-0.213	0.065	0.008	0.013	0.000000	0.000000	-1817.66	1062.29
2	FID	ACIS-I-6	7.25	4483	0.057	0.050	0.011	0.018	0.000000	0.000000	395.91	1706.98
3	GUIDE	31075128	9.33	8965	0.067	-0.139	0.104	0.167	149.584516	2.364347	-1116.12	754.22
4	GUIDE	31076560	9.65	8968	0.129	0.009	0.113	0.182	149.884782	2.009277	-1932.85	-706.66
5	GUIDE	31463496	9.46	8956	-0.090	-0.182	0.102	0.161	149.845020	2.964001	1233.84	636.73
6	GUIDE	31983336	8.60	8958	0.130	0.257	0.084	0.131	150.429924	2.291234	-291.71	-2184.28
7	GUIDE	32375384	9.97	8959	-0.232	0.051	0.141	0.228	150.238117	2.622063	579.34	-1119.28

2.4 Star Slots

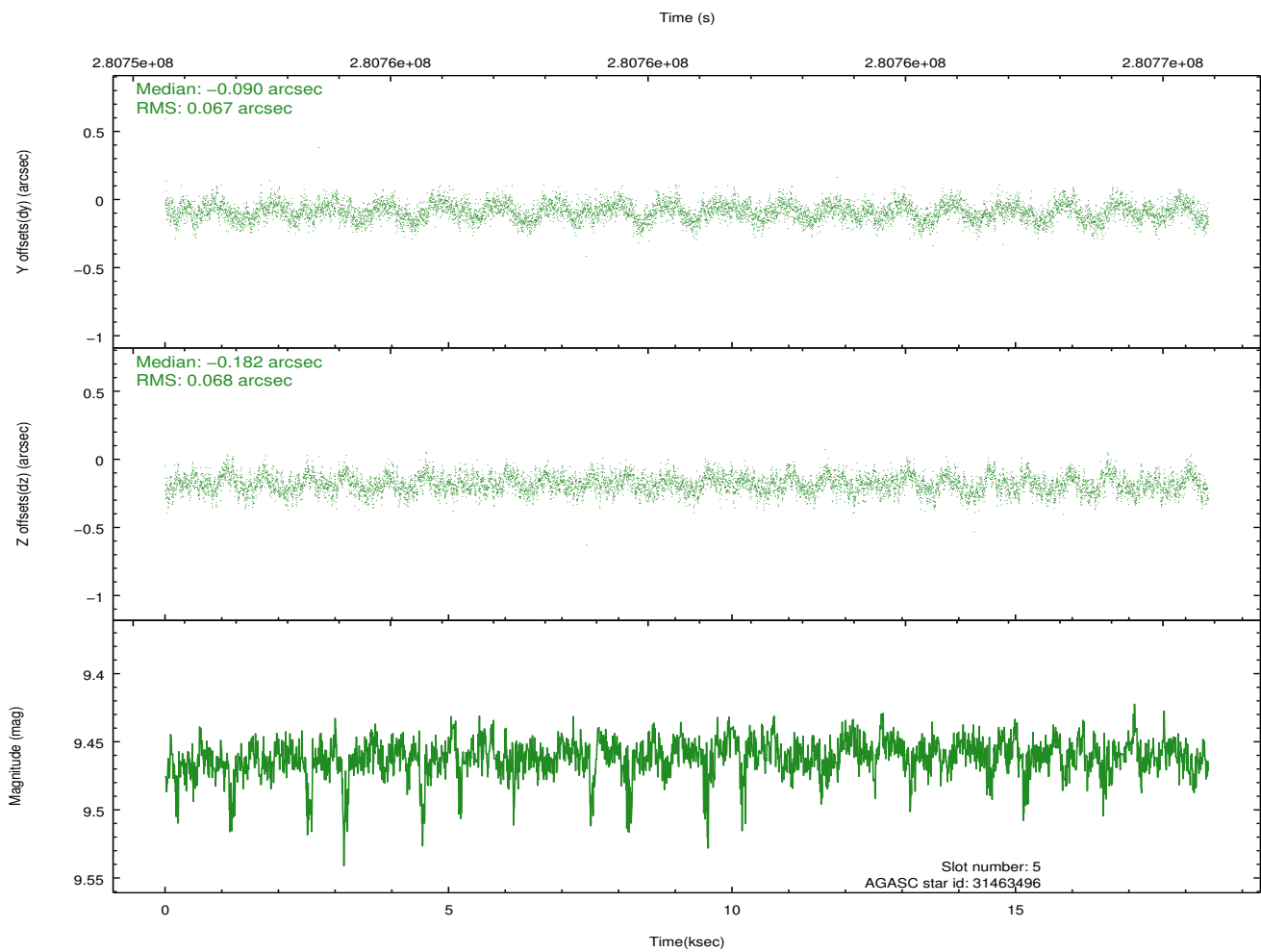
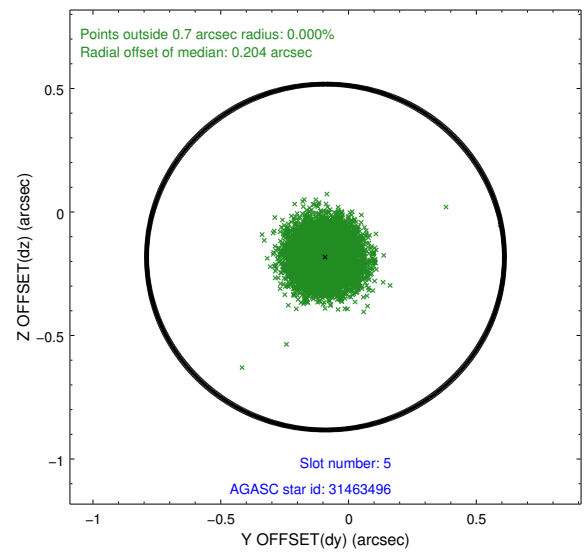
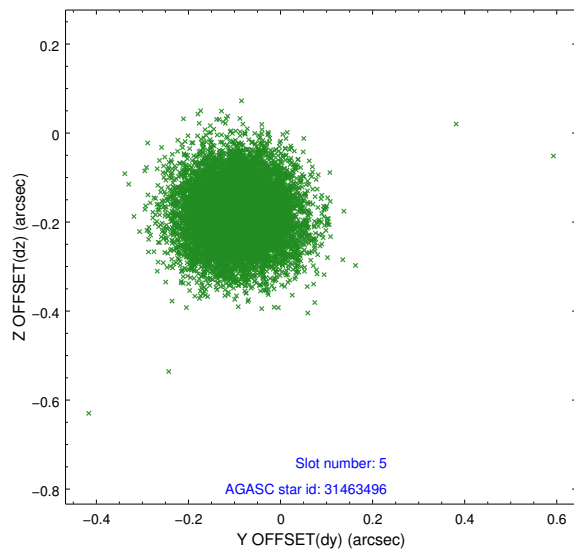
2.4.1 Slot 3



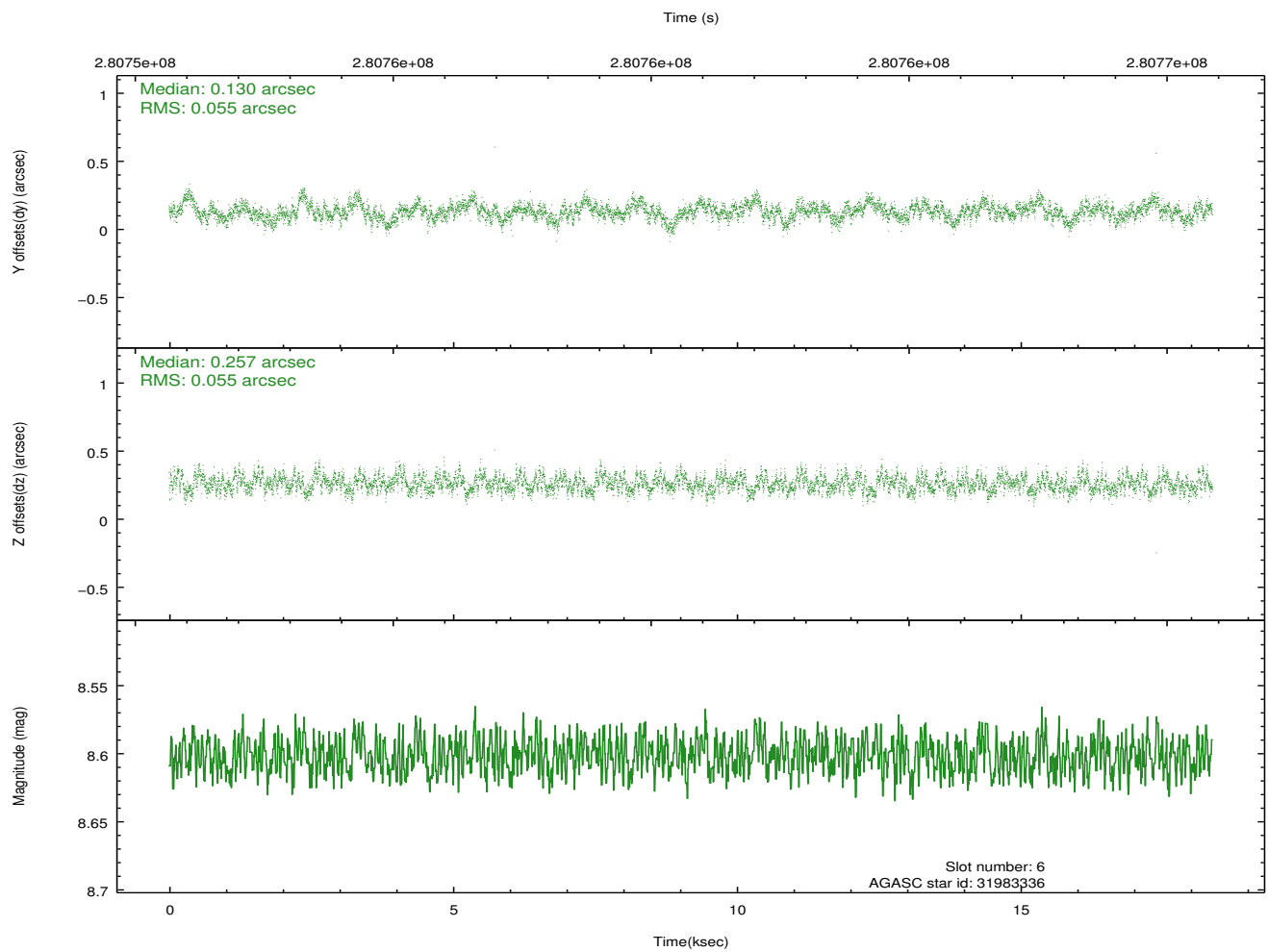
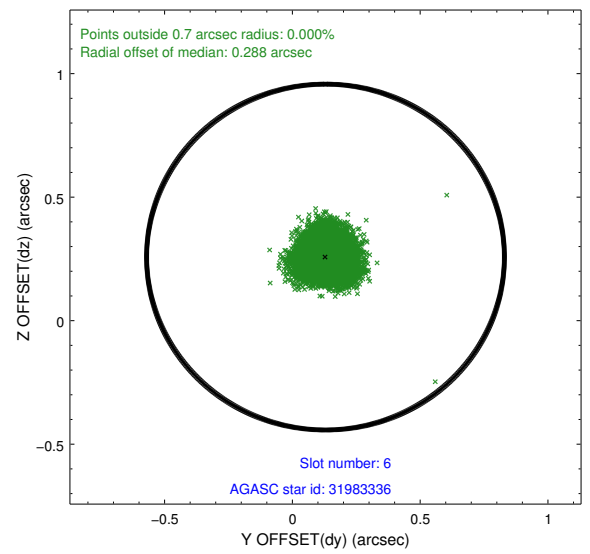
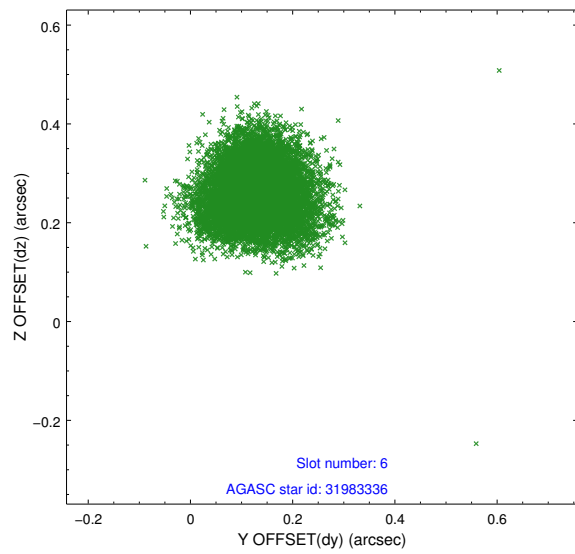
2.4.2 Slot 4



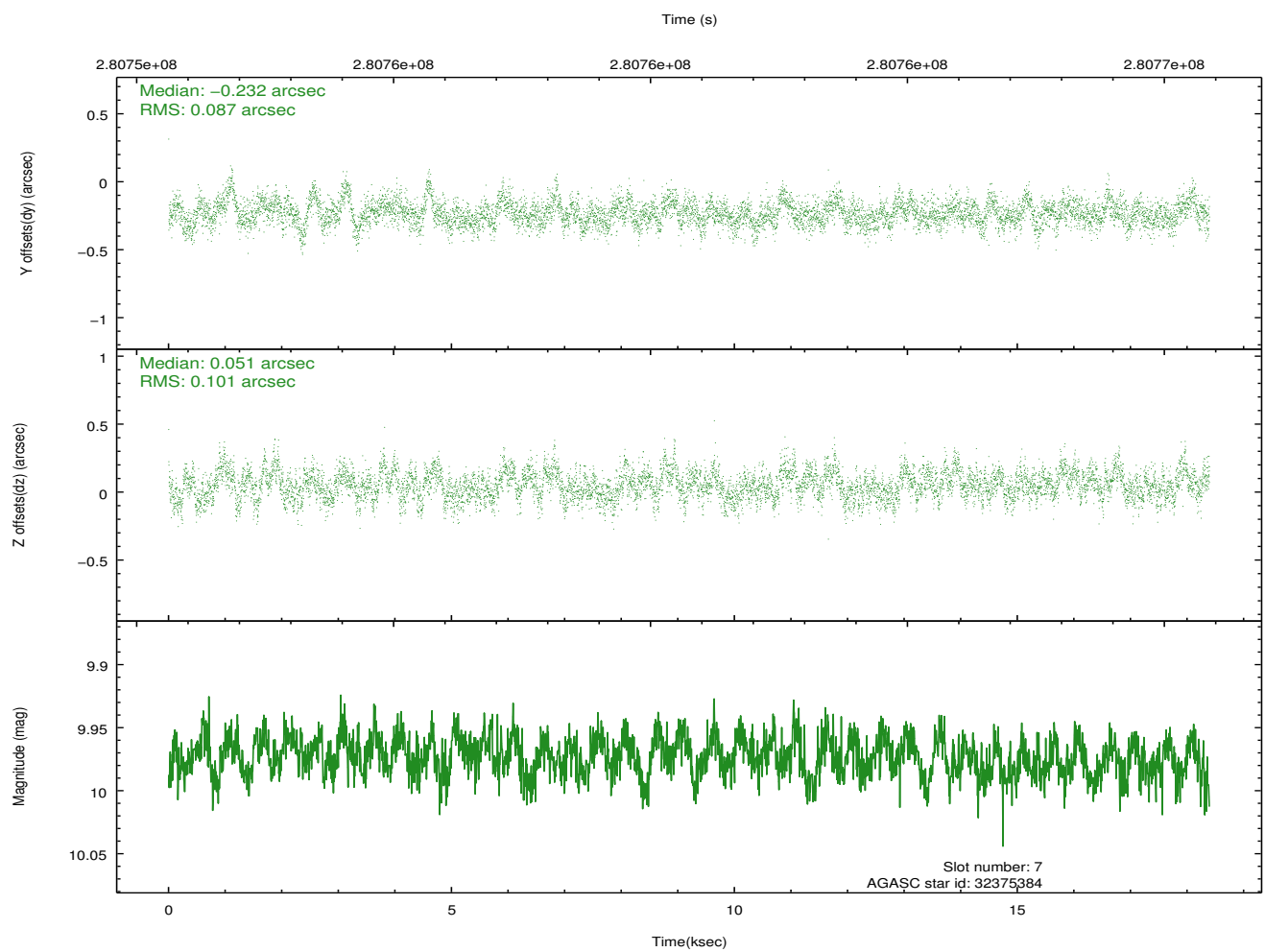
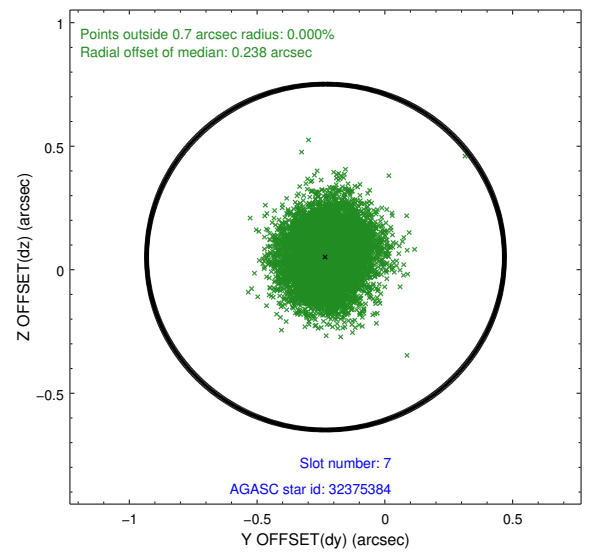
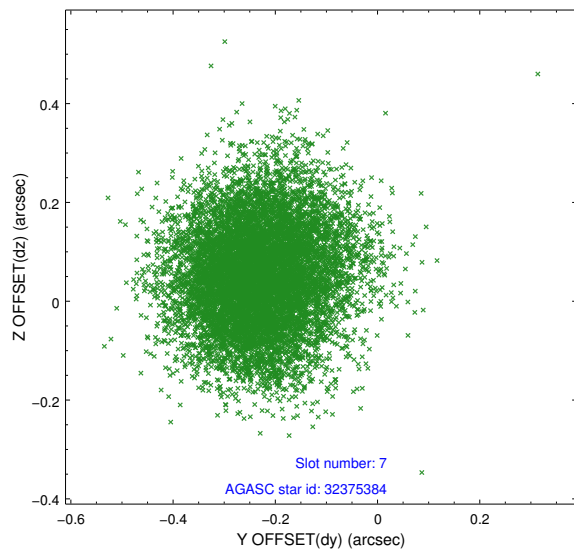
2.4.3 Slot 5



2.4.4 Slot 6

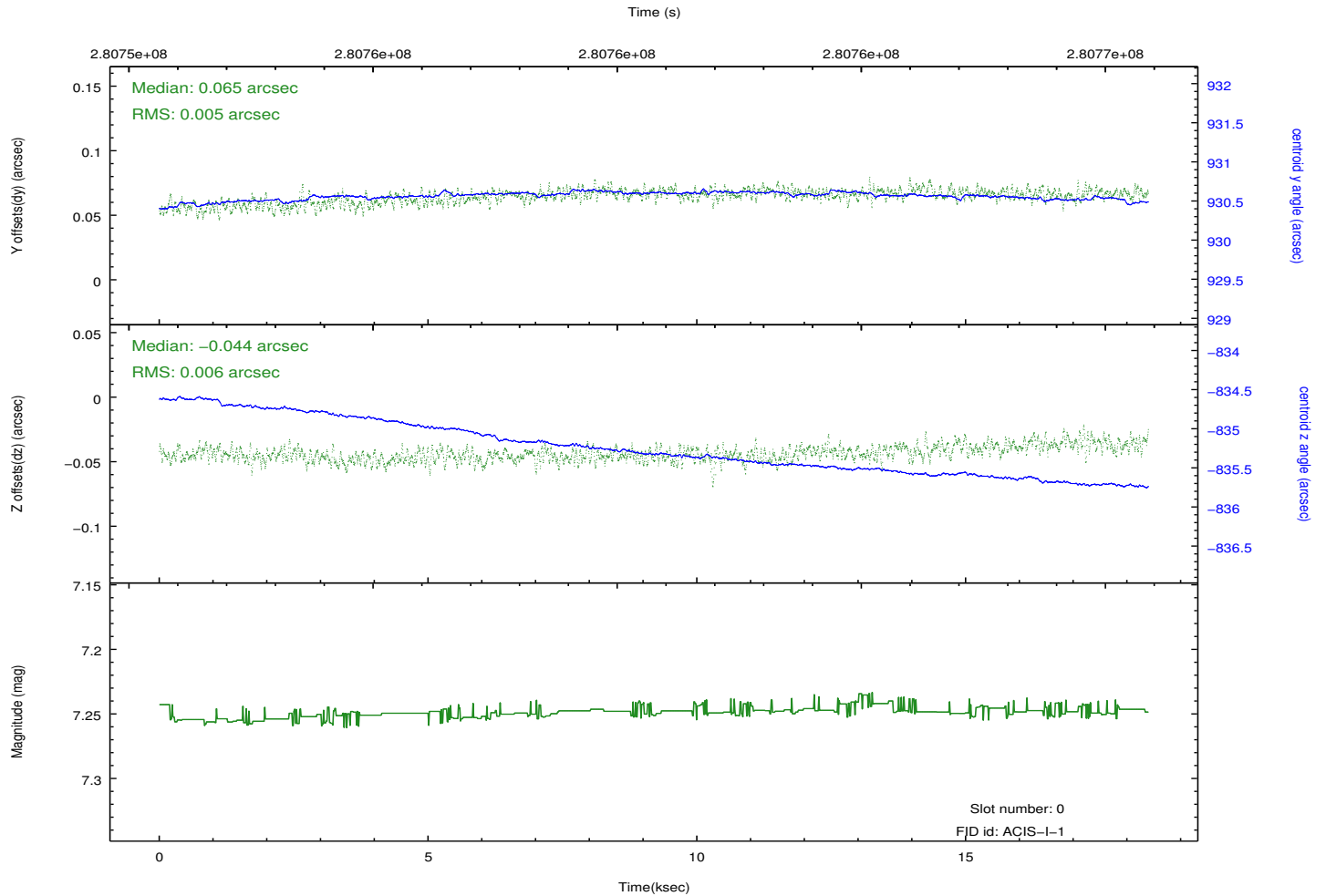
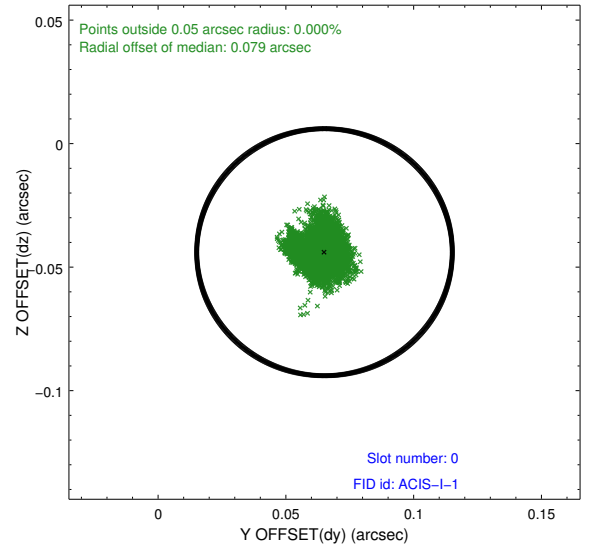
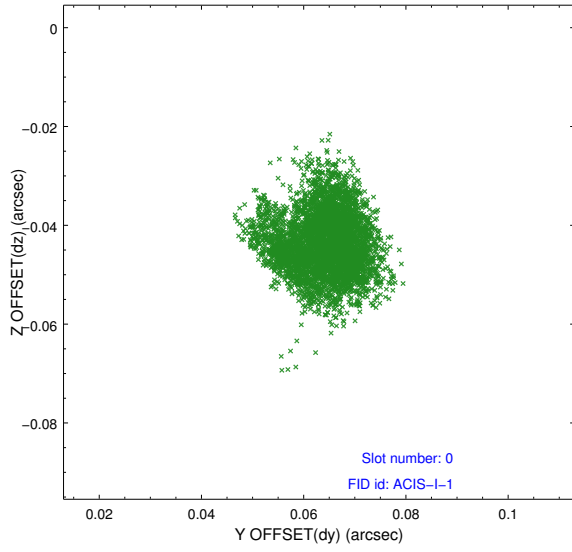


2.4.5 Slot 7

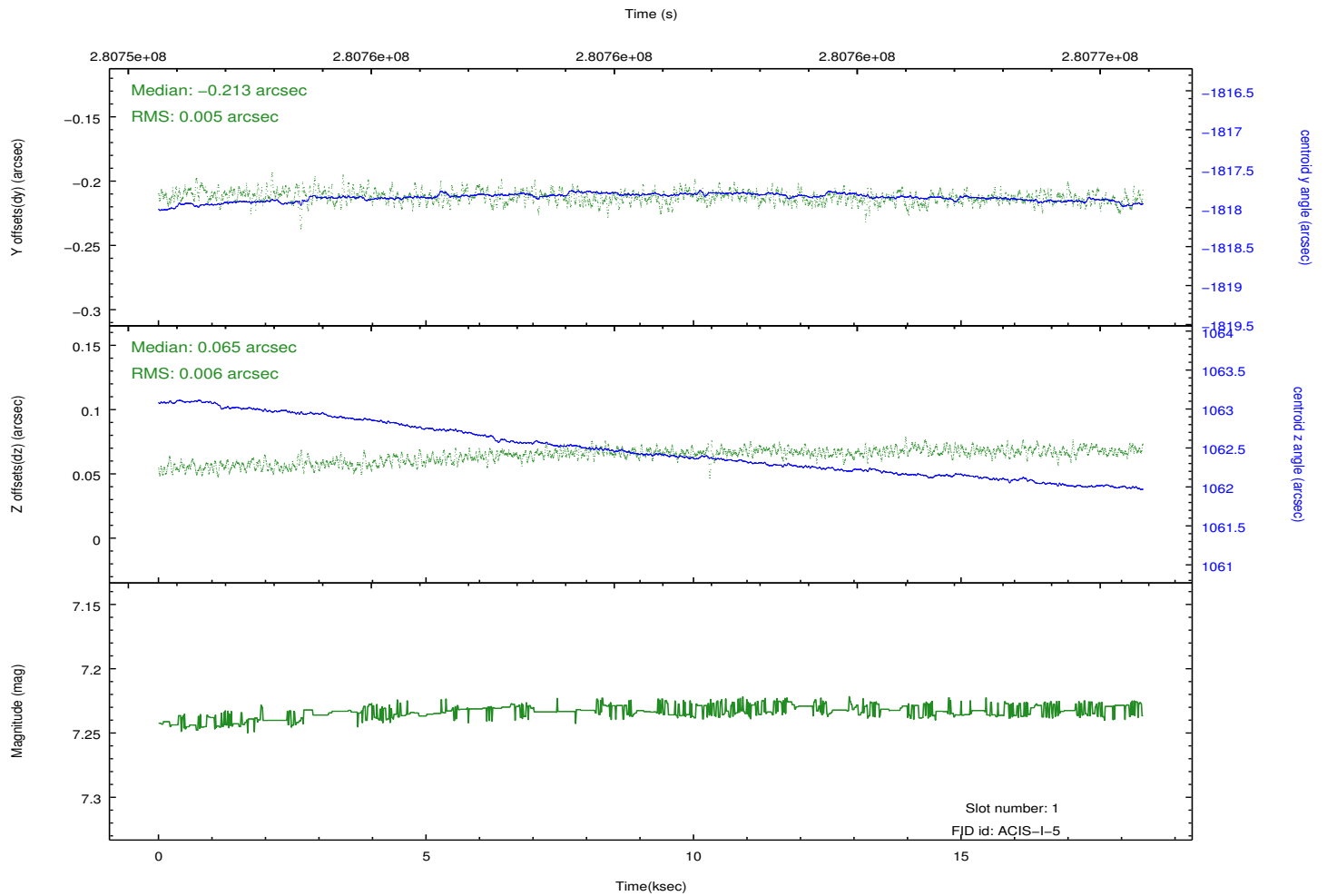
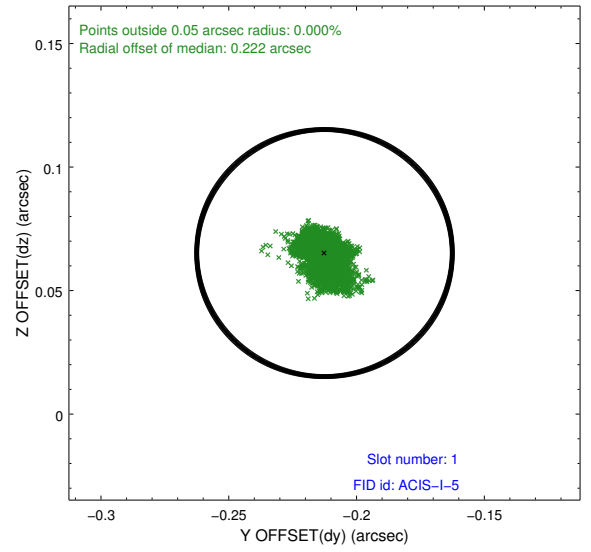
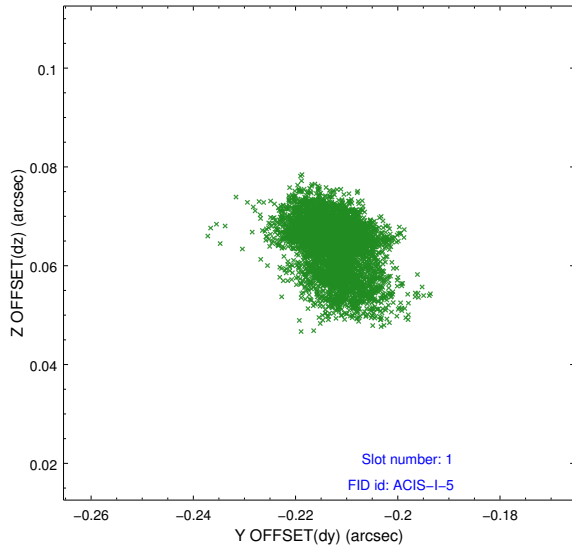


2.5 FID Slots

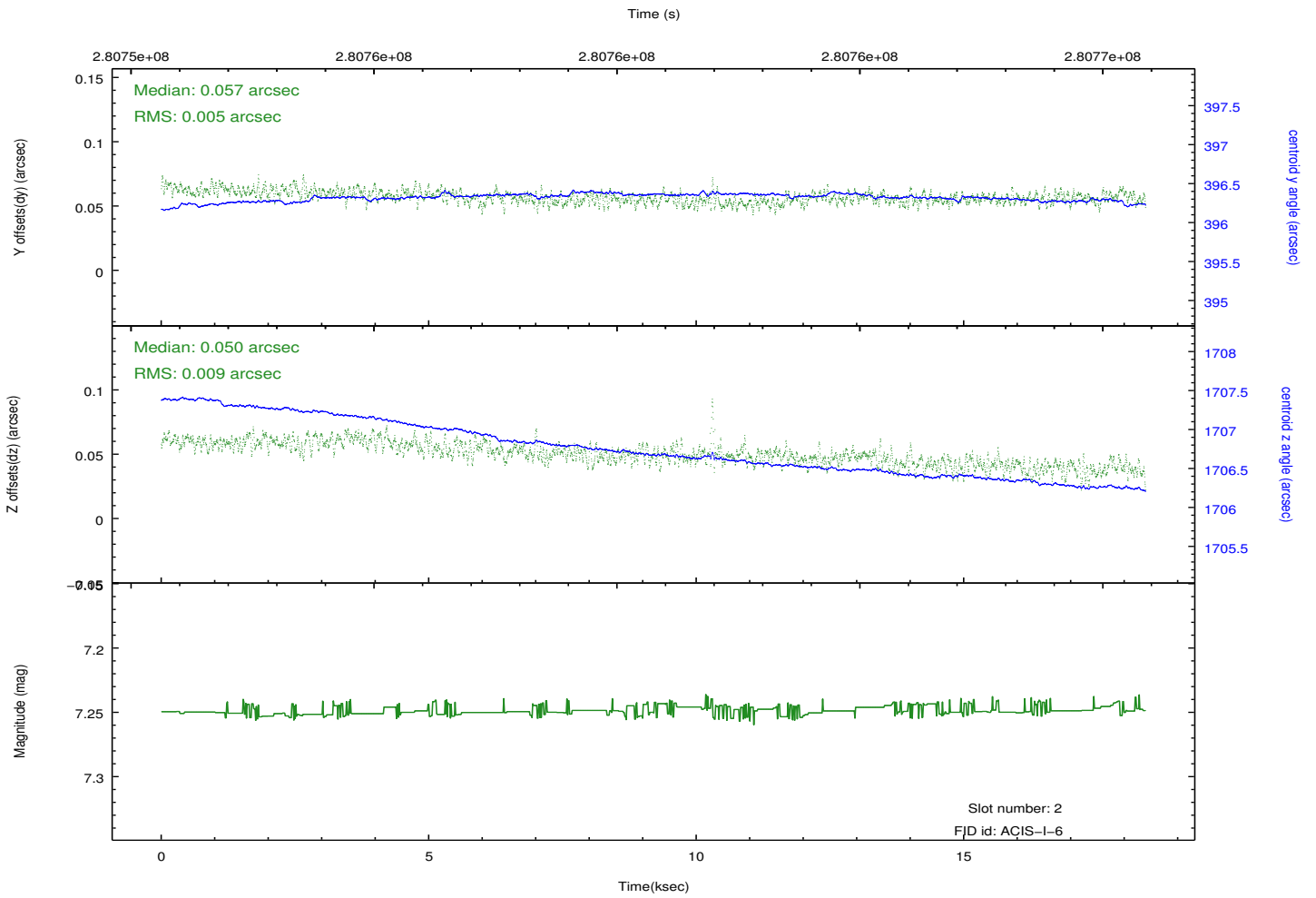
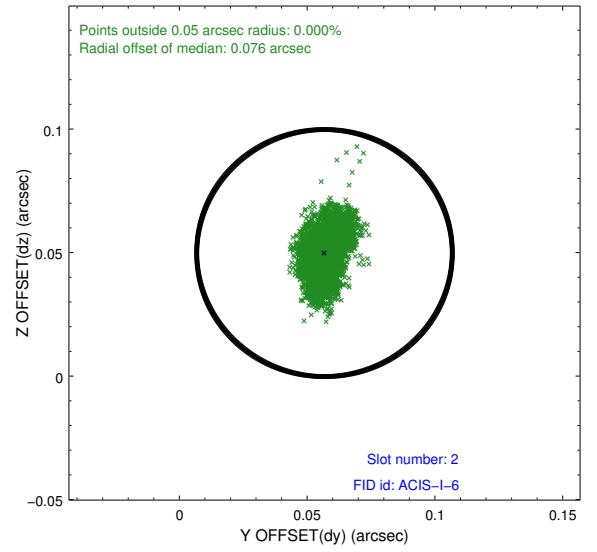
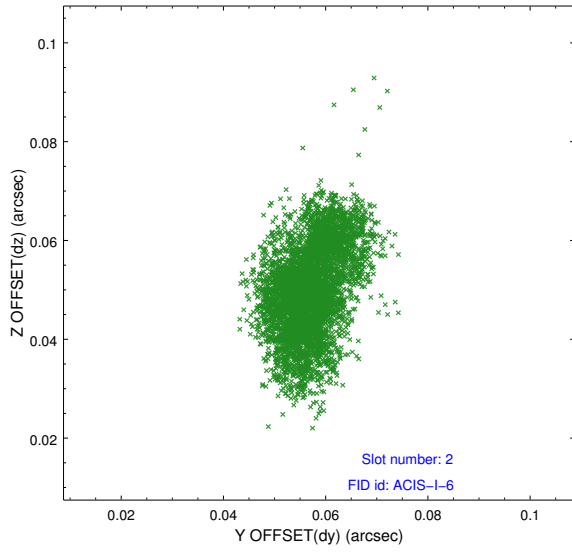
2.5.1 Slot 0



2.5.2 Slot 1



2.5.3 Slot 2



A Summary

A.1 Status

V&V Scientist	Beth Sundheim
V&V Date (YYYY-MM-DD)	2012.04.17
V&V Edition	1
V&V Disposition and Status	OK
V&V Charge Time	18.2143179

A.2 Comments