

V&V Reference Report

L2 ASCDS Version : 8.4.4

Observation 8628 - L2 Version 2
Chandra X-Ray Center

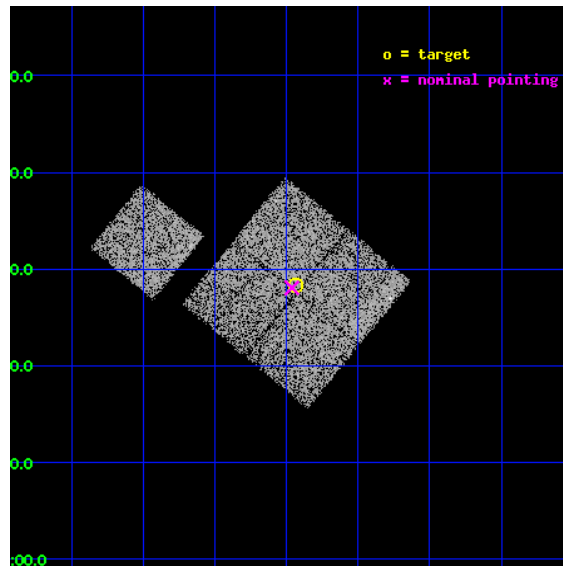
L2 Processing Date : May 5 2012

Contents

1	Front	2
2	OBI	3
2.1	OBI	3
2.1.1	Images	3
2.1.2	Bias	3
2.1.3	Parameters	4
2.1.4	Events	4
2.2	Compared Parameters	5
2.3	Aspect	6
2.4	Star Slots	9
2.4.1	Slot 3	9
2.4.2	Slot 4	10
2.4.3	Slot 5	11
2.4.4	Slot 6	12
2.4.5	Slot 7	13
2.5	FID Slots	14
2.5.1	Slot 0	14
2.5.2	Slot 1	15
2.5.3	Slot 2	16
A	Summary	17
A.1	Status	17
A.2	Comments	17

1 Front

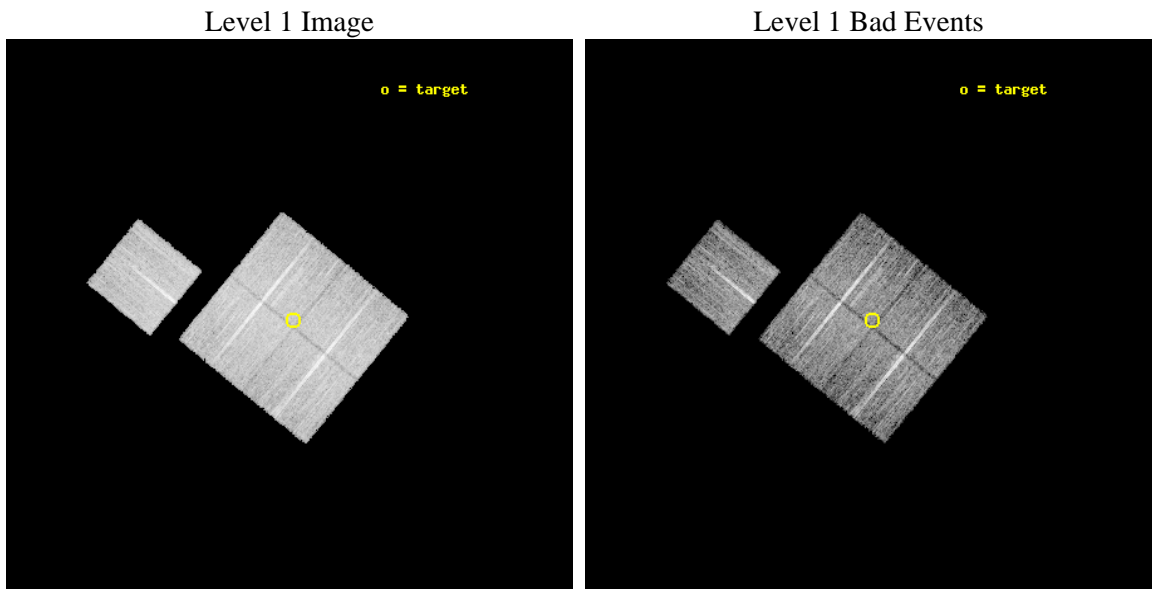
seq_num	900765	Sequence number
obs_id	8628	Observation id
title	Chandra Observations of the DEEP2 Fields	Proposal title
observer	Dr. Stephen Murray	Principal investigator
object	DEEP2 Field 4	Source name
dtcycle	0	
cycle	P	events from which exps? Prim/Second/Both
ra_targ	37.483498	Observer's specified target RA [deg]
dec_targ	0.47209	Observer's specified target Dec [deg]
ra_nom	37.490291181464	Nominal RA [deg]
dec_nom	0.46766909318326	Nominal Dec [deg]
roll_nom	309.2386369383	Nominal Roll [deg]
revision	2	Processing version of data
ontime	8577.319701612	Sum of GTIs [s]
livetime	8465.2507051795	Livetime [s]
ontime0	8574.0555713177	Sum of GTIs [s]
ontime1	8577.2376216054	Sum of GTIs [s]
ontime2	8574.1376813054	Sum of GTIs [s]
ontime3	8577.319701612	Sum of GTIs [s]
ontime6	8574.014541328	Sum of GTIs [s]
l2events	28974	Number of level 2 events



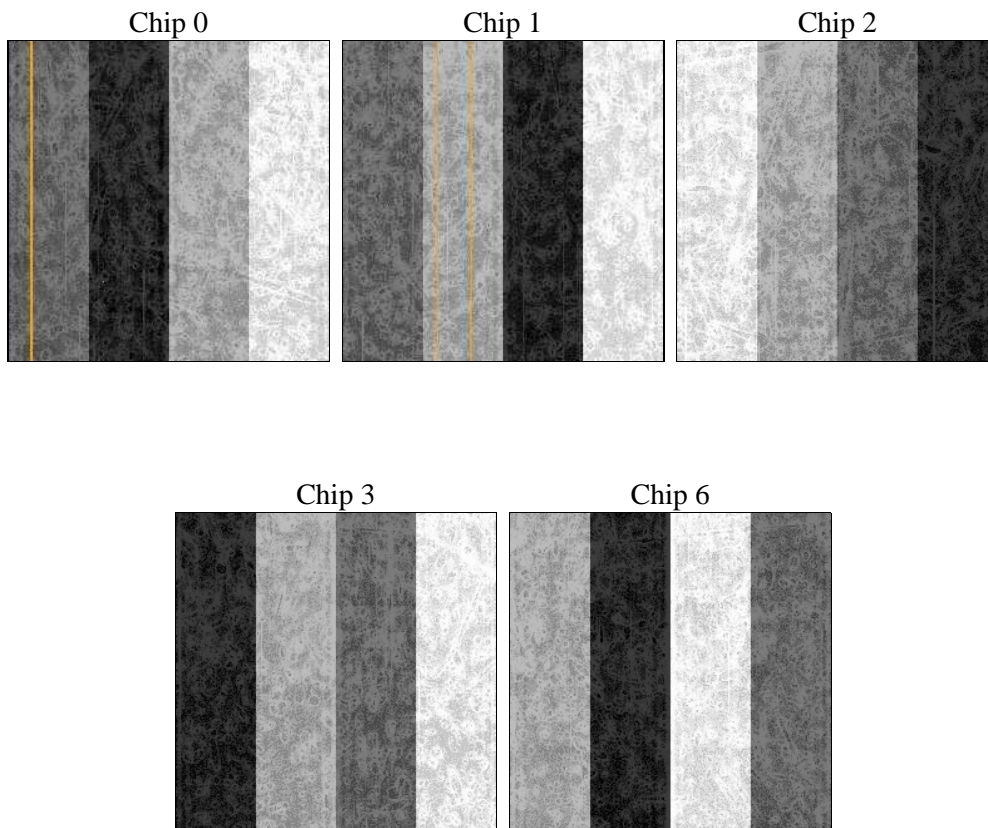
2 OBI

2.1 OBI

2.1.1 Images



2.1.2 Bias



2.1.3 Parameters

obi_num	0	Obi number	sched_exp_time	8800.000000	[s] Scheduled observation exposure time
ascdsver	8.4.4	Processing system revision	ontime	8577.319701612	Sum of GTIs [s]
caldbver	4.4.9	 	ontime0	8574.0555713177	Sum of GTIs [s]
date	2012-05-05T20:54:47	Date and time of file creation	ontime1	8577.2376216054	Sum of GTIs [s]
revision	2	Processing version of data	ontime2	8574.1376813054	Sum of GTIs [s]
			ontime3	8577.319701612	Sum of GTIs [s]
			ontime6	8574.014541328	Sum of GTIs [s]
			l1events	347669	Number of level 1 events

2.1.4 Events

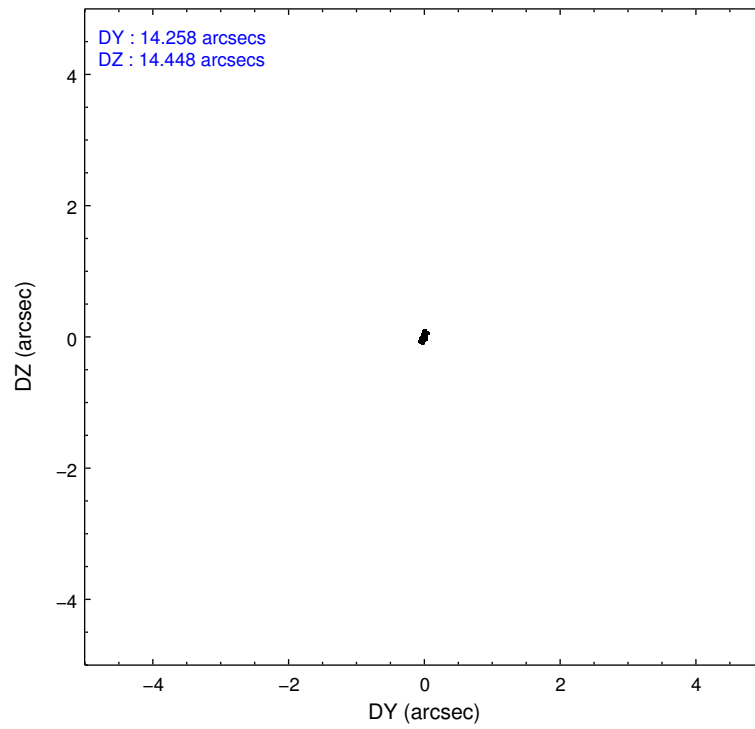
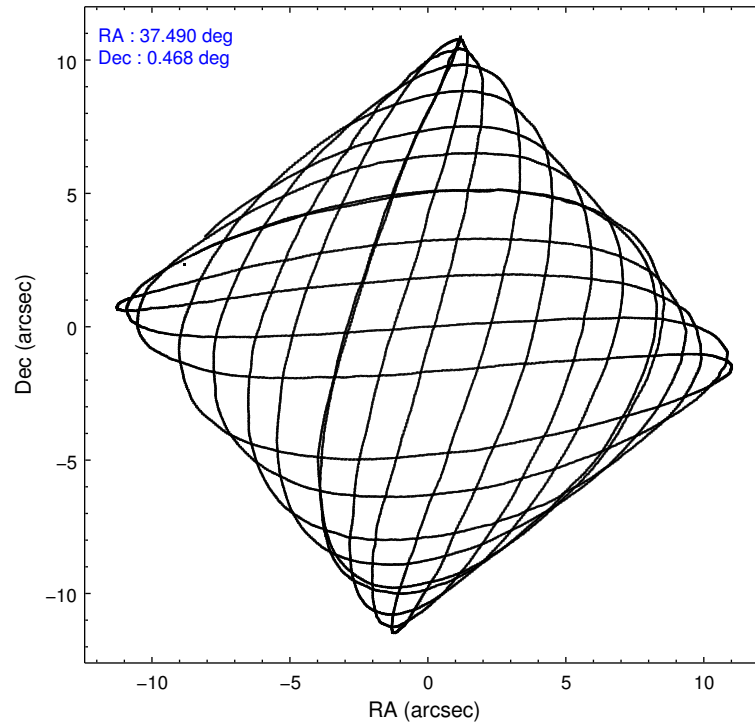
	ccd 0	ccd 1	ccd 2	ccd 3	ccd 6
level 1 events	66016	66014	75078	68908	71653
rejected events	59090	58243	68397	62415	64484
rejected %	89%	88%	91%	90%	89%

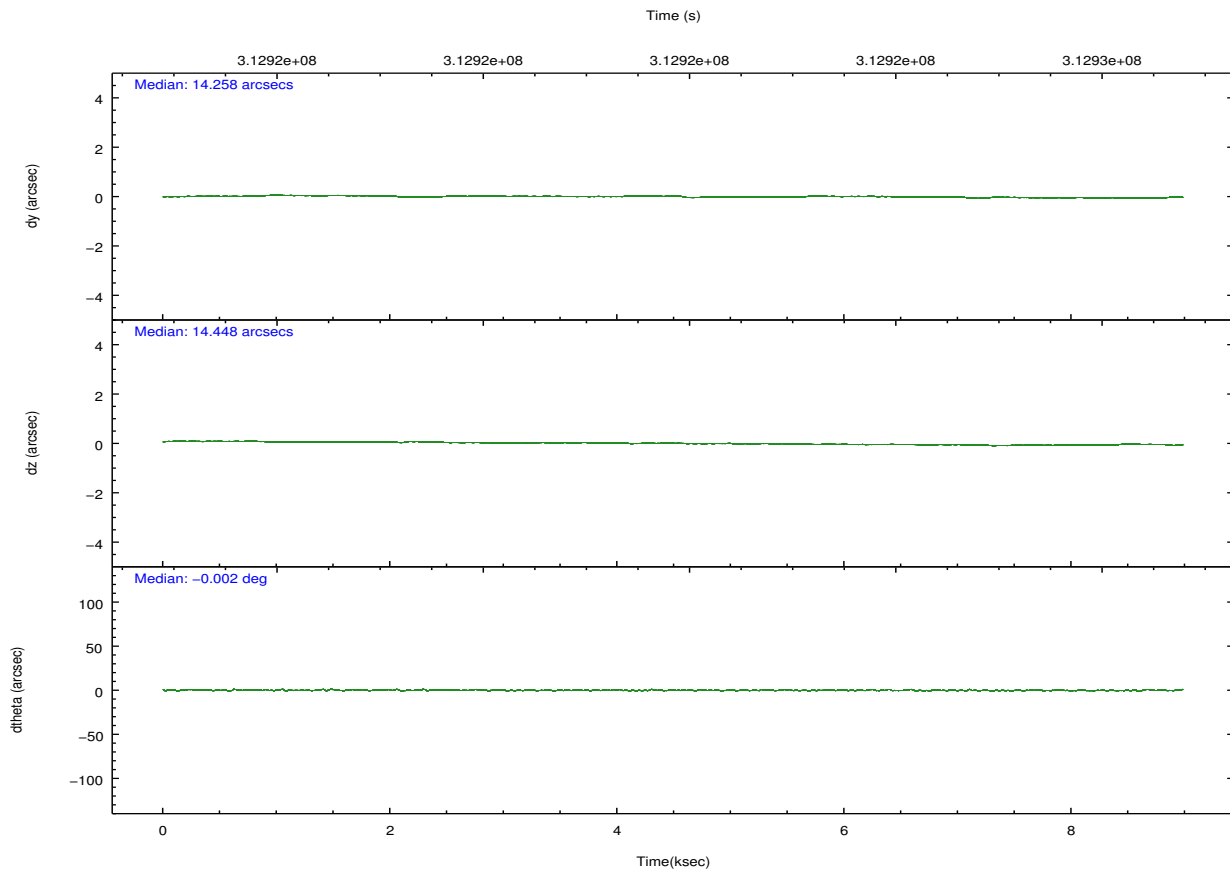
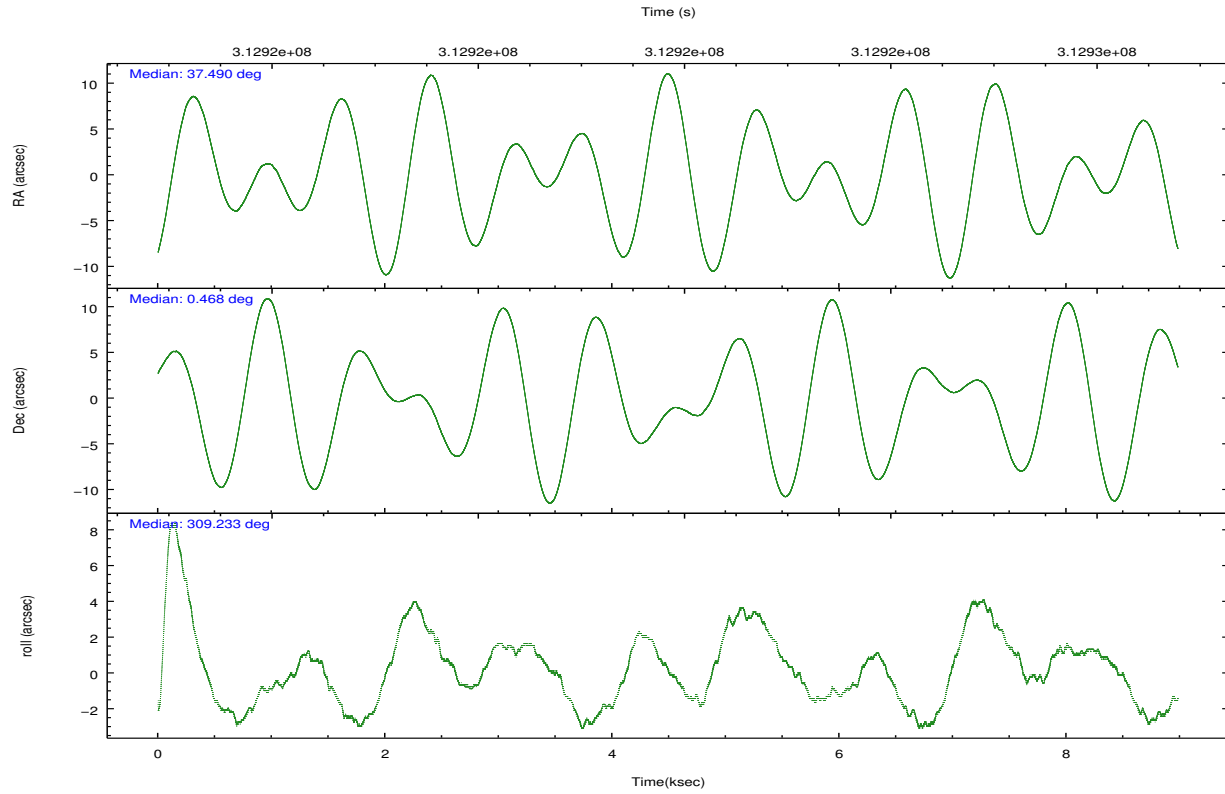
	ccd 0	ccd 1	ccd 2	ccd 3	ccd 6
grade 0 events	2366	2810	2403	2140	2451
	3%	4%	3%	3%	3%
grade 1 events	36	30	33	36	36
	0%	0%	0%	0%	0%
grade 2 events	1680	1769	1608	1477	1598
	2%	2%	2%	2%	2%
grade 3 events	803	820	723	770	774
	1%	1%	0%	1%	1%
grade 4 events	733	804	721	755	761
	1%	1%	0%	1%	1%
grade 5 events	2332	2694	2329	2829	2806
	3%	4%	3%	4%	3%
grade 6 events	1346	1570	1228	1354	1589
	2%	2%	1%	1%	2%
grade 7 events	56720	55517	66033	59547	61638
	85%	84%	87%	86%	86%

2.2 Compared Parameters

Parameter	Planned	Actual	Parameter	Planned	Actual
Instrument	ACIS	ACIS	Obspar format version number	7	7
Detector	ACIS-01236	ACIS-01236	Obspar file type	PREDICTED	ACTUAL
Grating	NONE	NONE	Obspar update status	NONE	UPDATED
Data mode	VFAINT	VFAINT	CCD I0 on	Y	Y
Observation mode	POINTING	POINTING	CCD I1 on	Y	Y
[deg] Pointing RA	37.464480	37.49029118146416	CCD I2 on	Y	Y
[deg] Pointing Dec	0.477276	0.46766909318326	CCD I3 on	Y	Y
[deg] Pointing Roll	309.030156	309.238636938297	CCD S0 on	N	N
[mm] SIM focus pos	-0.782348	-0.7809083437167272	CCD S1 on	N	N
[mm] SIM defocus	0	0.001439871863259334	CCD S2 on	O1	Y
[mm] SIM translation stage pos	-233.592463	-233.5874344608287	CCD S3 on	N	N
[mm] SIM translation stage offset	0	-0.005018542100998502	CCD S4 on	N	N
[s] Observation start time (MET)	312917531.184000	312917155.27639	CCD S5 on	N	N
Observation start date	2007-12-01T17:31:06	2007-12-01T17:25:55	Number of optional ACIS chips dropped	0	0
[s] Observation end time (MET)	312926331.184000	312926465.35184	On-chip summing requested	N	N
Observation end date	2007-12-01T19:57:46	2007-12-01T20:01:05	Subarray requested	NONE	NONE
Read mode	TIMED	TIMED	Alternating exposures requested	N	N
			[s] Primary exposure time	0.000000	3.1

2.3 Aspect



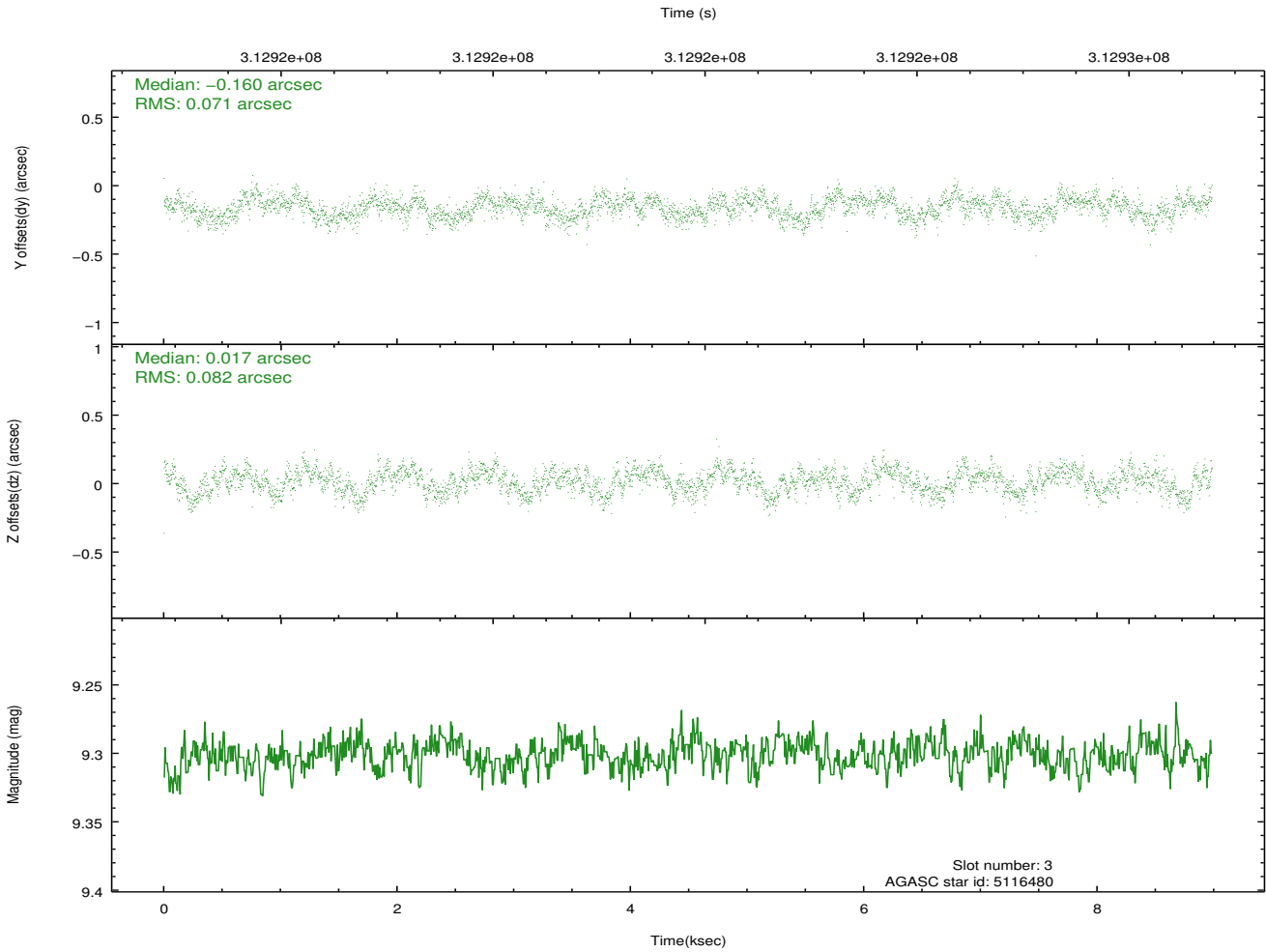
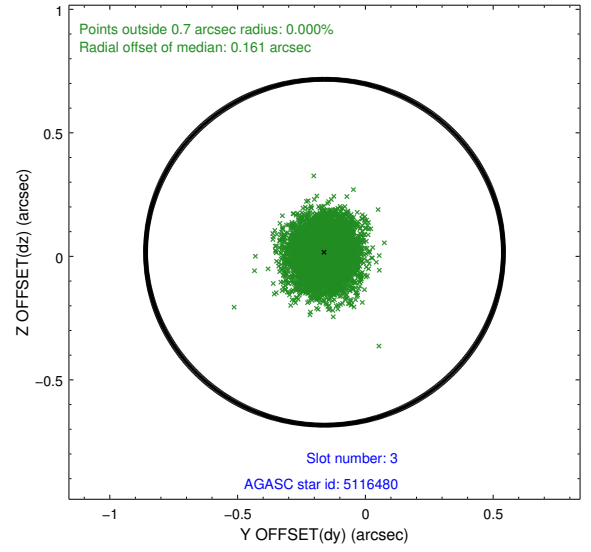
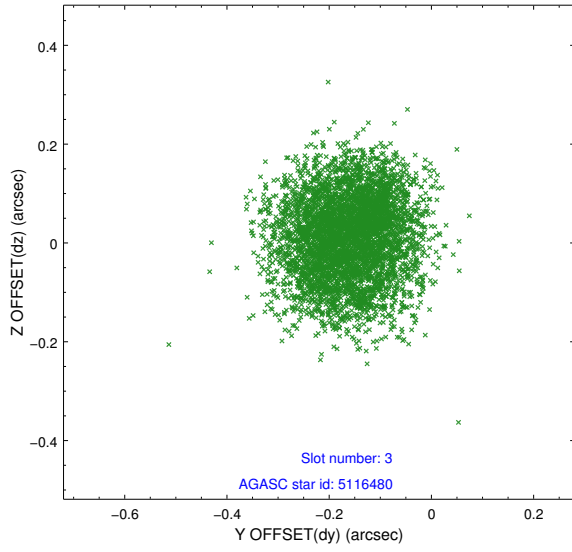


Slot Statistics

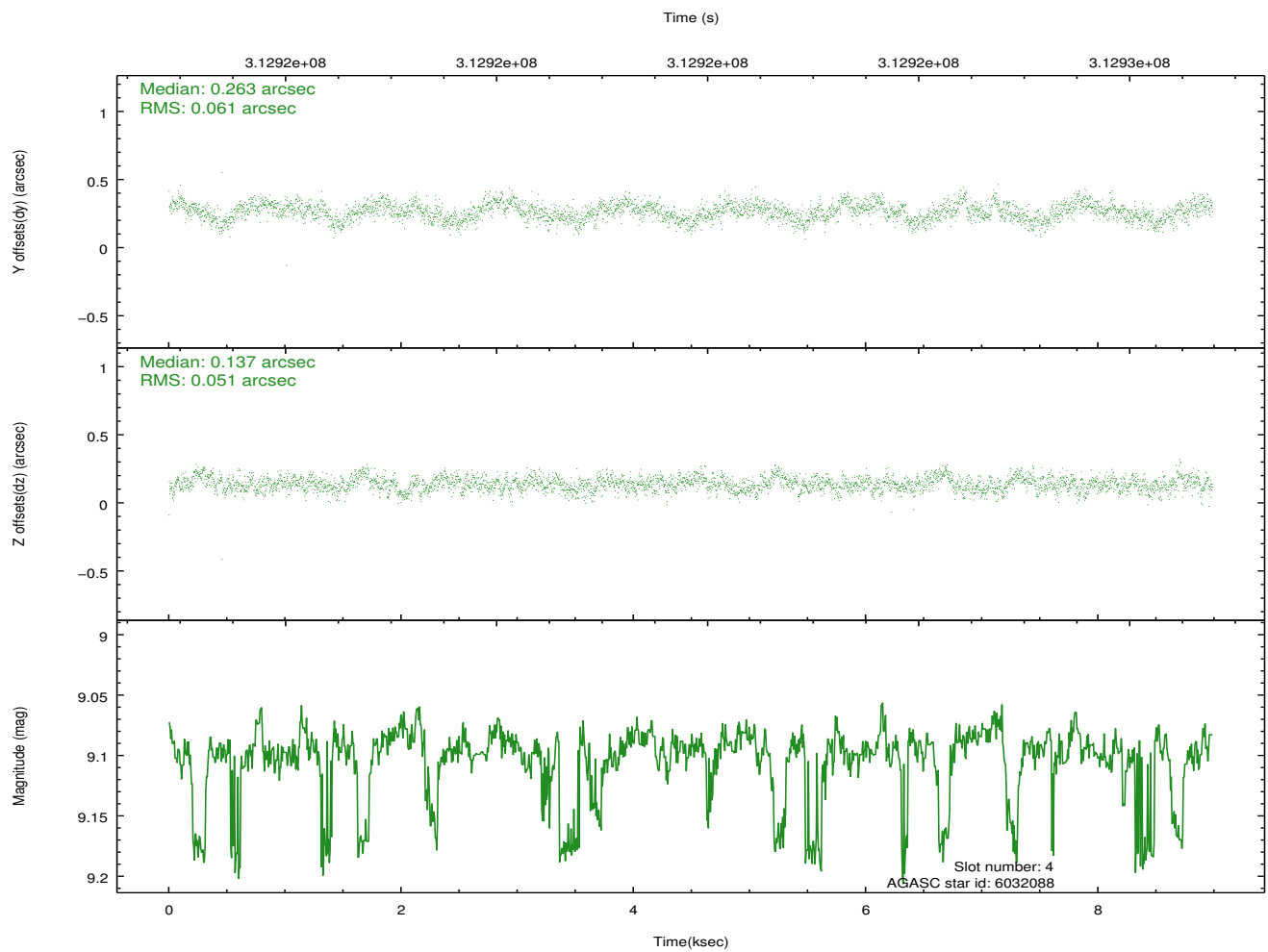
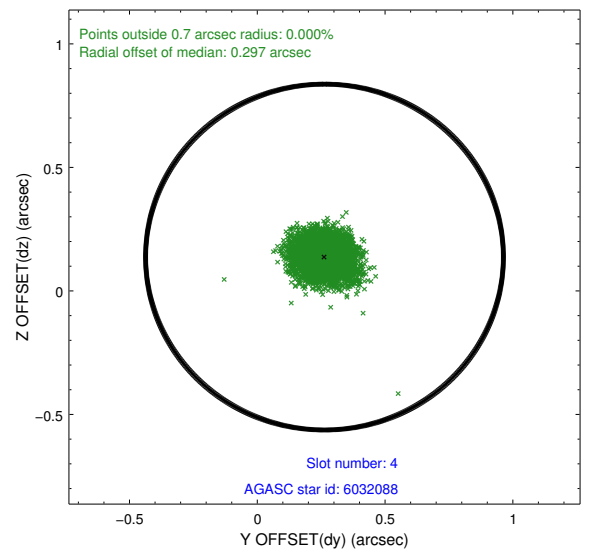
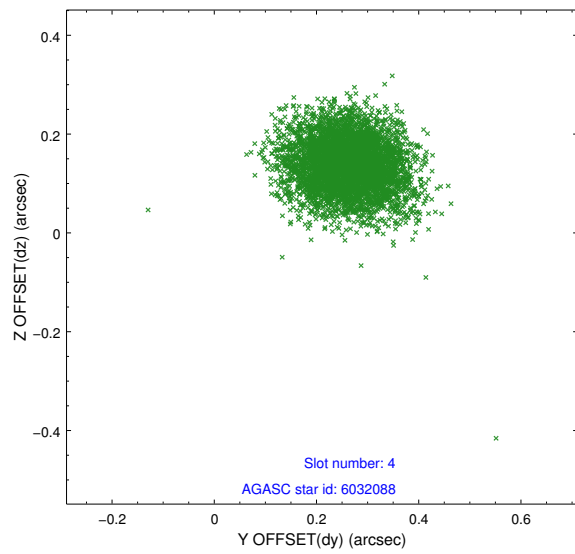
slot	status	id	mag	n_pts	med_dy	med_dz	dr1	dr2	ra	dec	mean_y	mean_z
0	FID	ACIS-I-1	7.24	2191	0.031	0.003	0.007	0.012	0.000000	0.000000	925.27	-838.02
1	FID	ACIS-I-5	7.23	2191	-0.225	0.033	0.006	0.010	0.000000	0.000000	-1822.78	1059.17
2	FID	ACIS-I-6	7.24	2191	0.103	0.034	0.007	0.012	0.000000	0.000000	390.20	1704.38
3	GUIDE	5116480	9.30	4377	-0.160	0.017	0.118	0.181	36.624607	0.603451	-2256.54	-2062.53
4	GUIDE	6032088	9.10	4356	0.263	0.137	0.085	0.137	37.532714	0.102881	1201.83	-658.22
5	GUIDE	6033288	9.01	4381	-0.103	0.090	0.099	0.154	37.919400	0.743225	287.48	1874.95
6	GUIDE	6034024	9.69	4375	-0.073	0.011	0.145	0.232	37.505848	1.160303	-1816.36	1664.40
7	GUIDE	6042384	6.40	4382	0.063	-0.245	0.082	0.135	37.688348	0.255749	1126.90	123.49

2.4 Star Slots

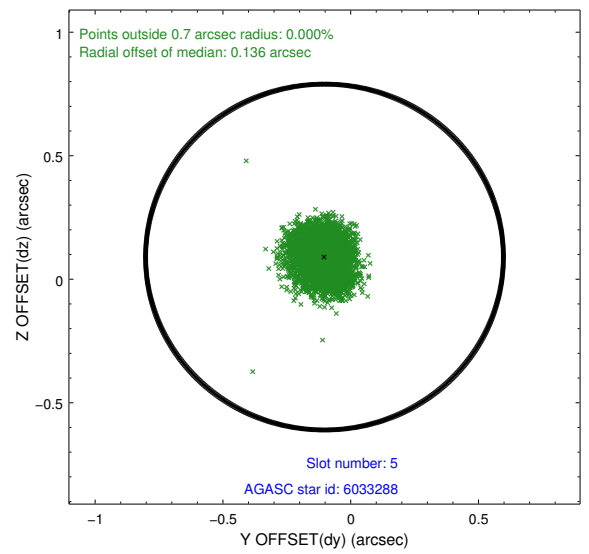
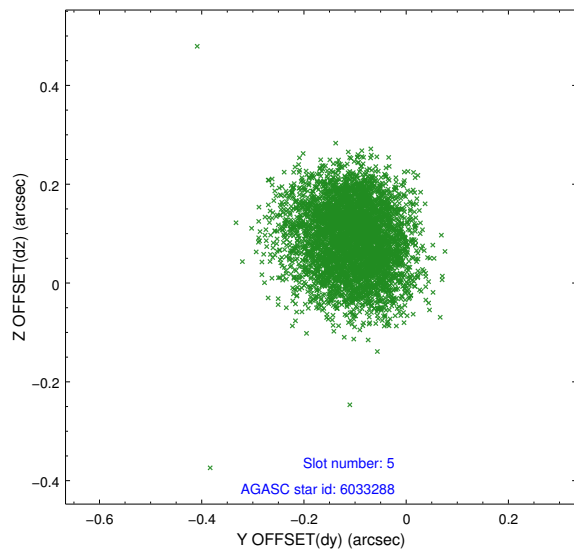
2.4.1 Slot 3



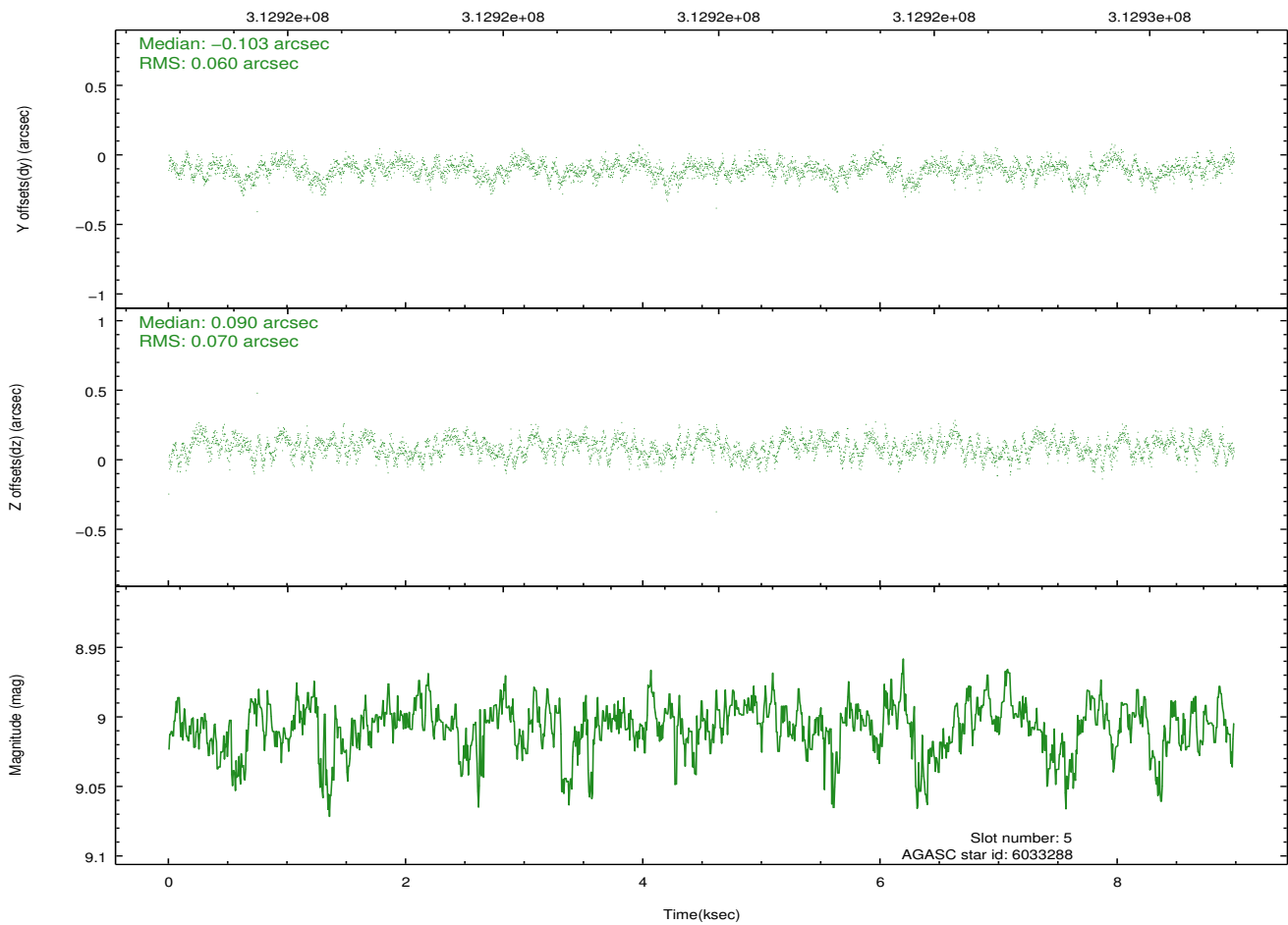
2.4.2 Slot 4



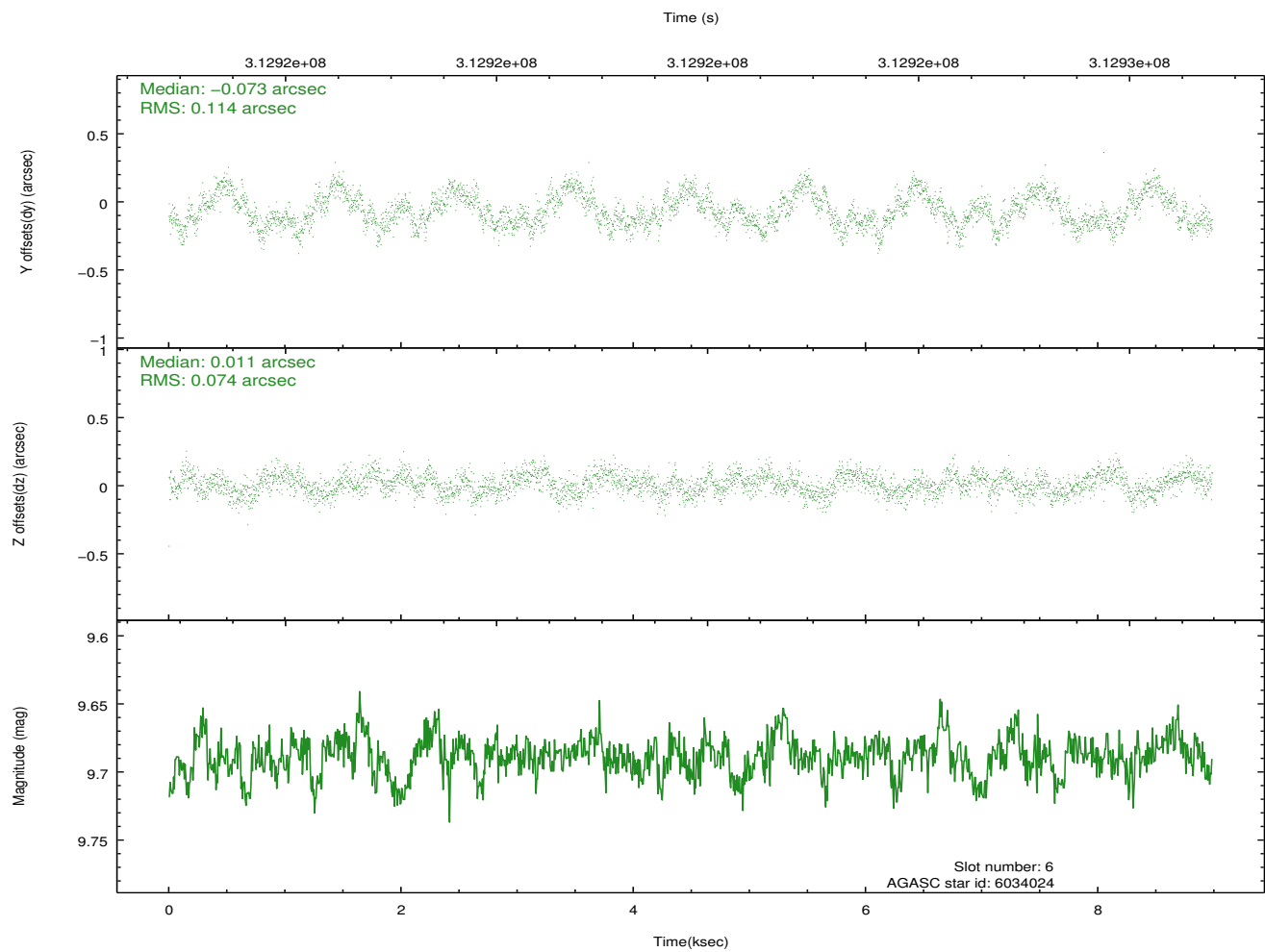
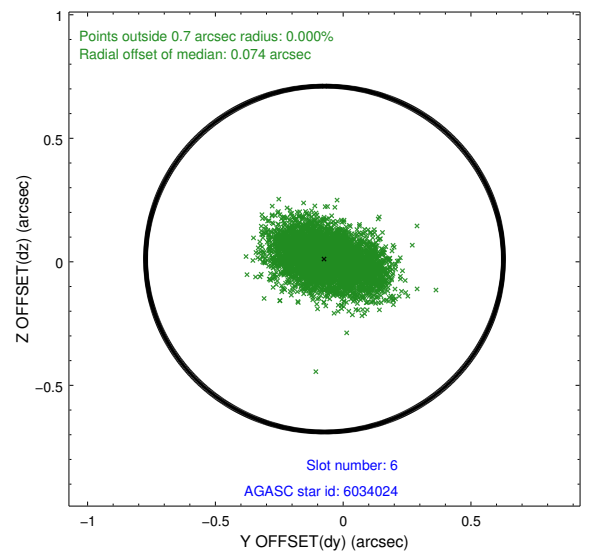
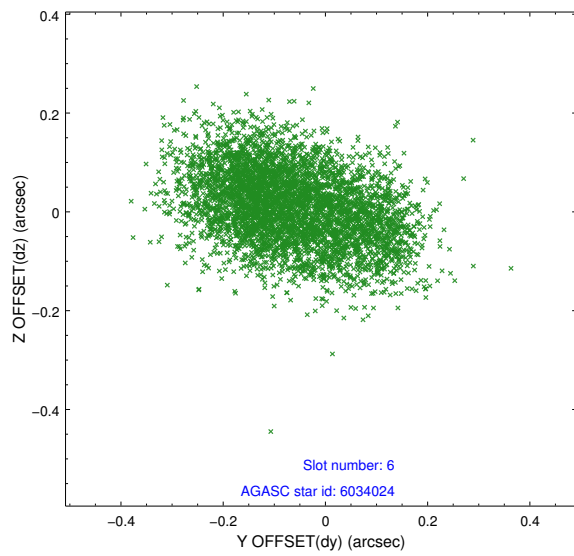
2.4.3 Slot 5



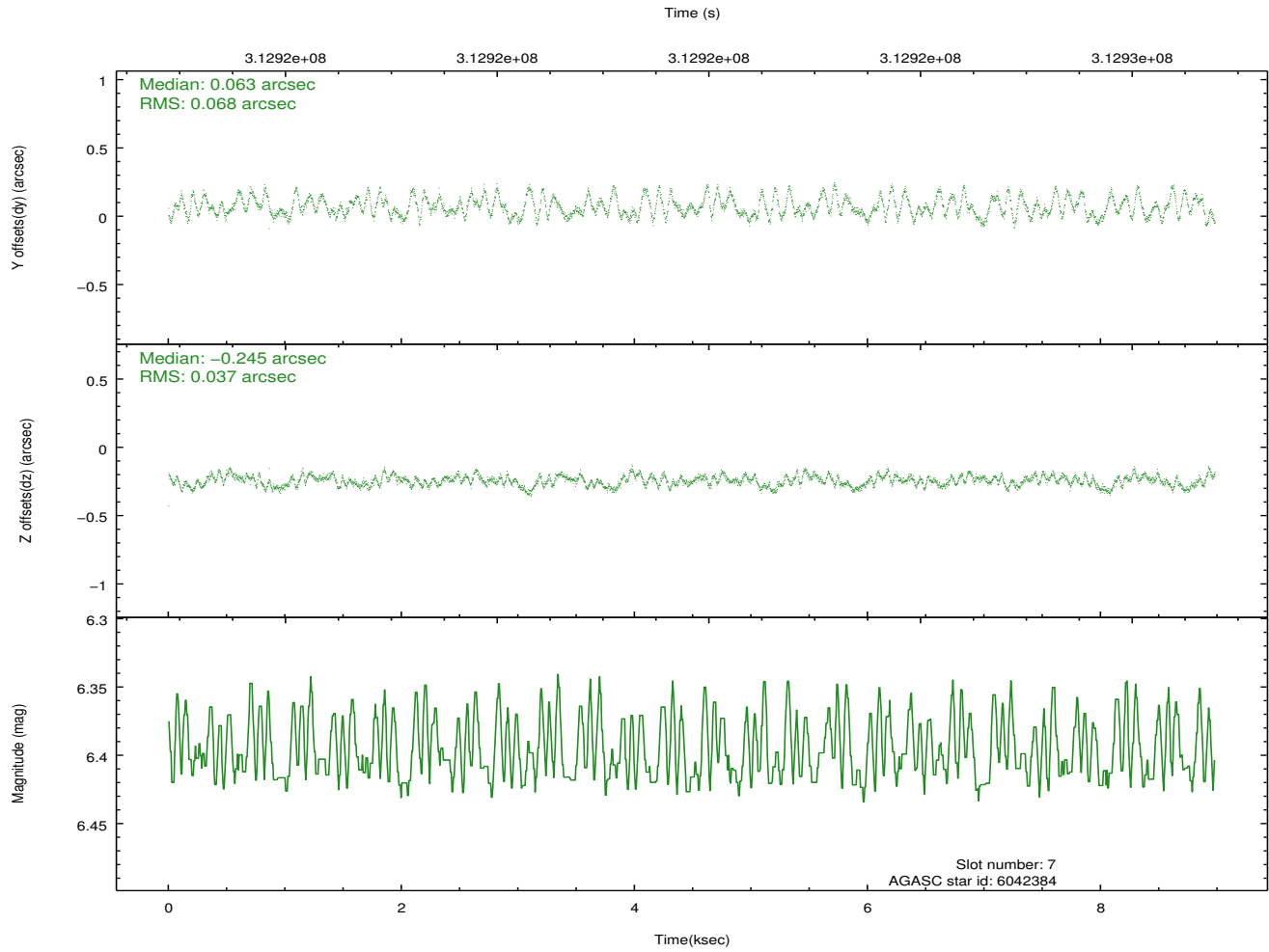
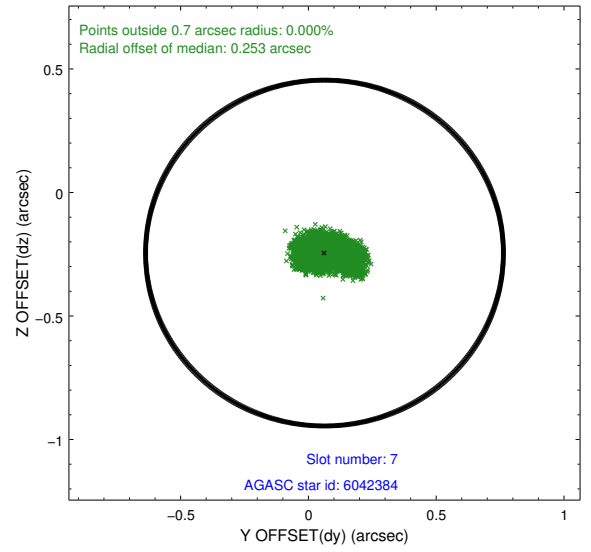
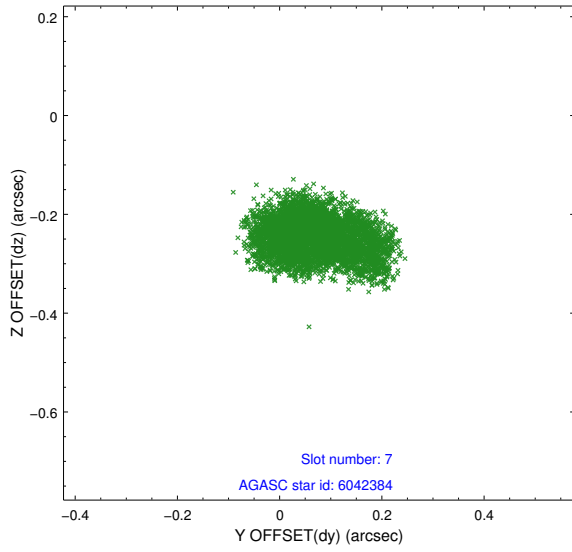
Time (s)



2.4.4 Slot 6

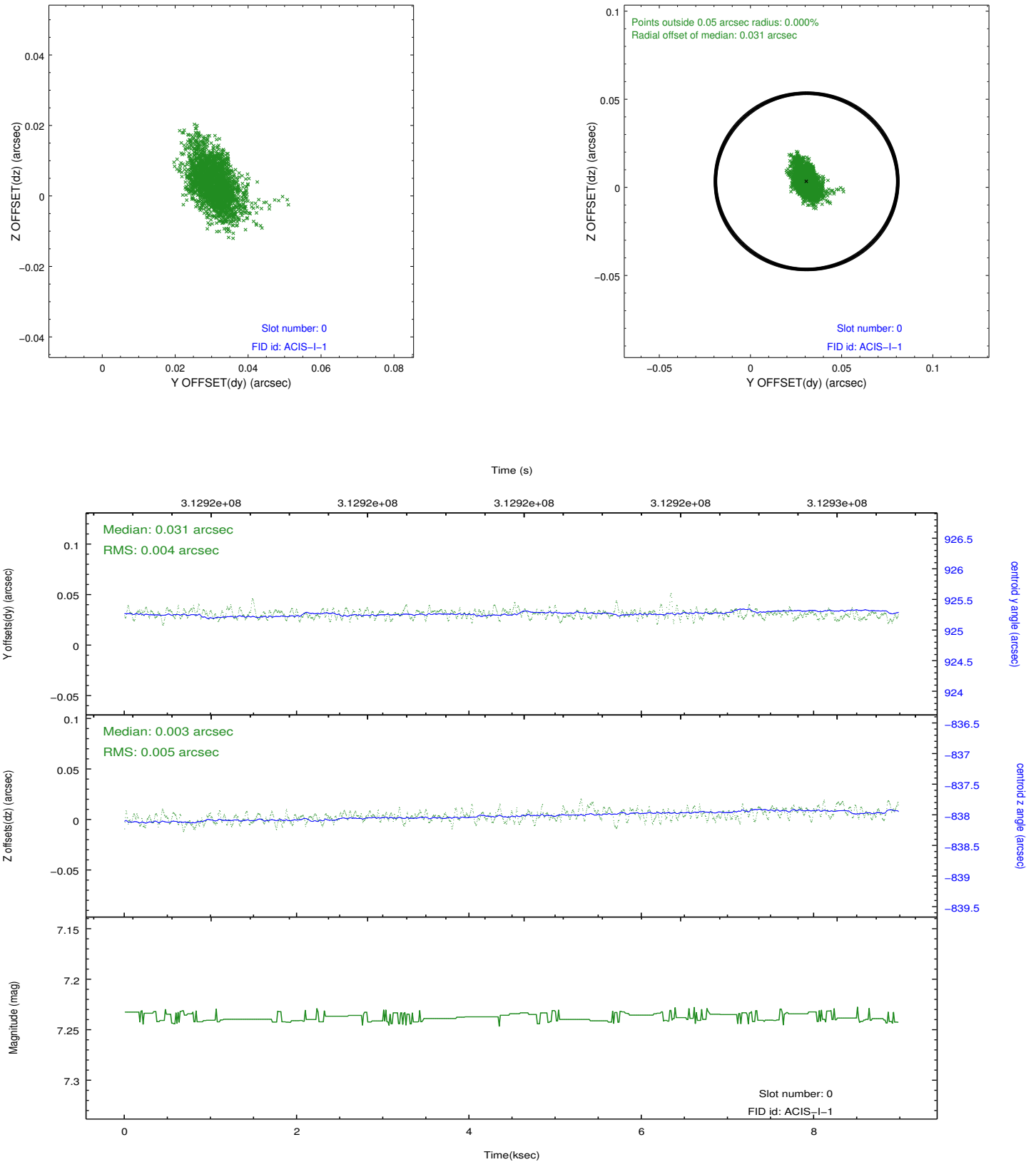


2.4.5 Slot 7

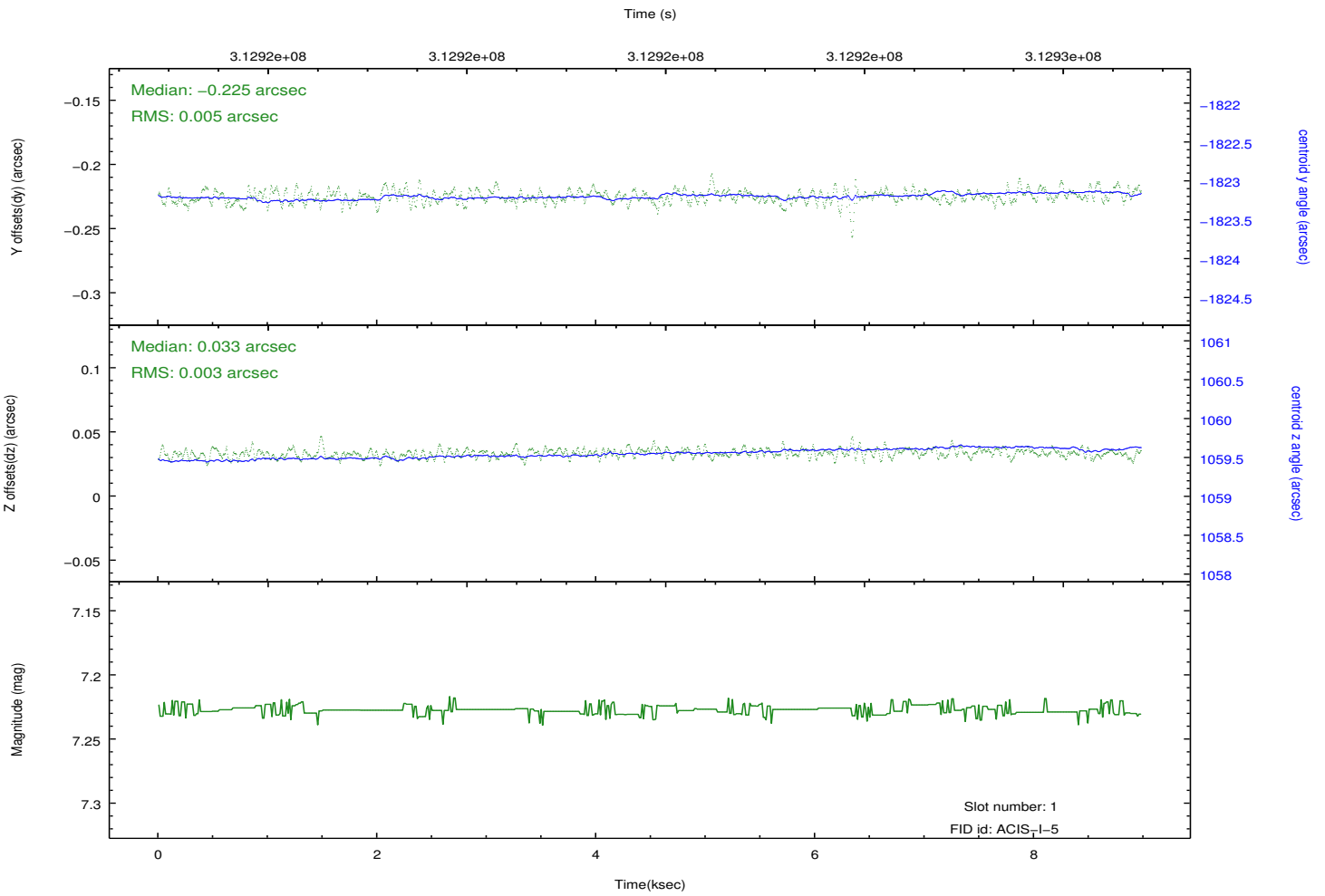
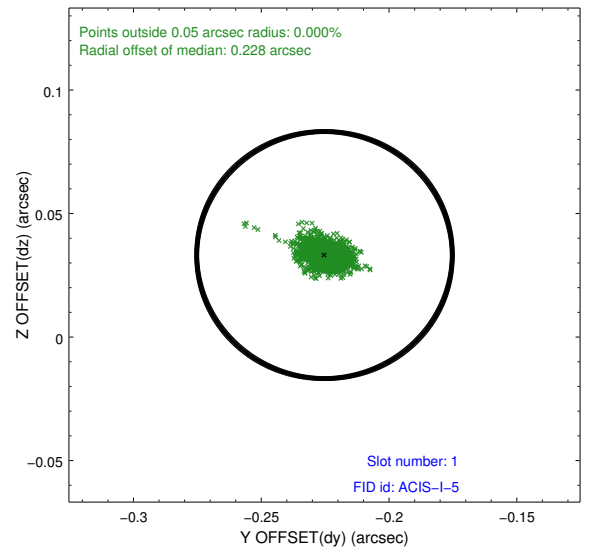
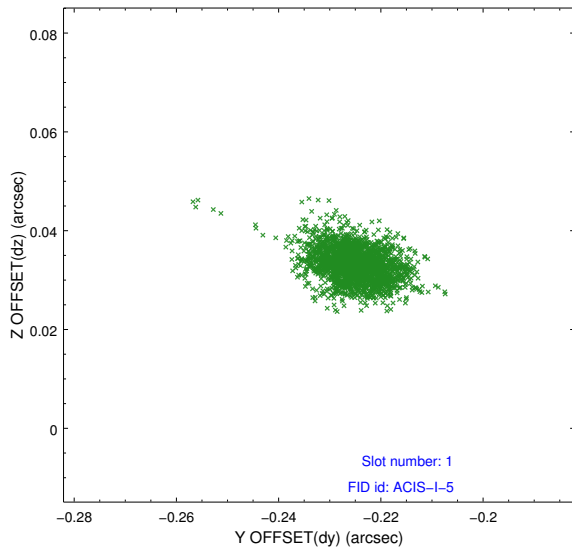


2.5 FID Slots

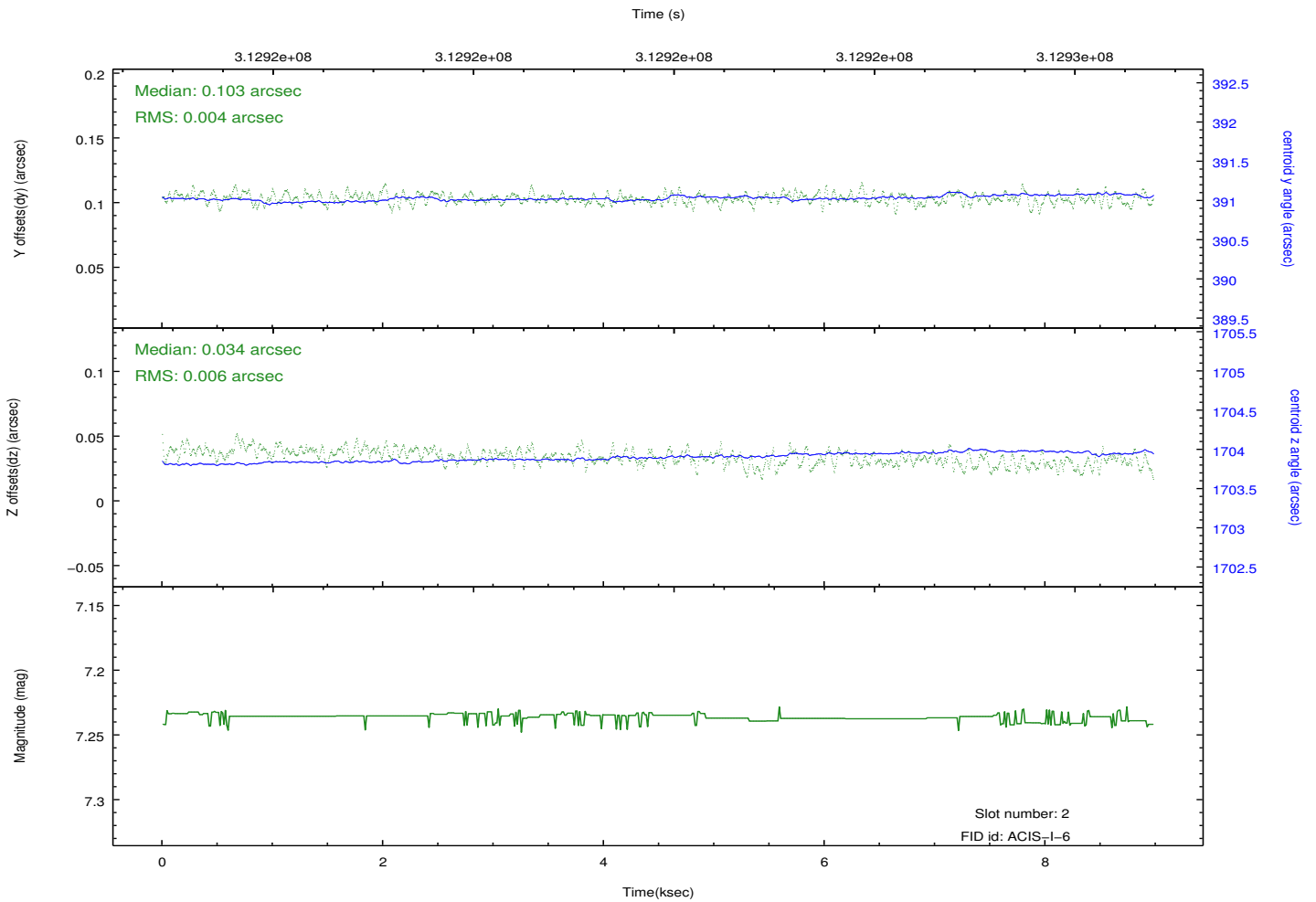
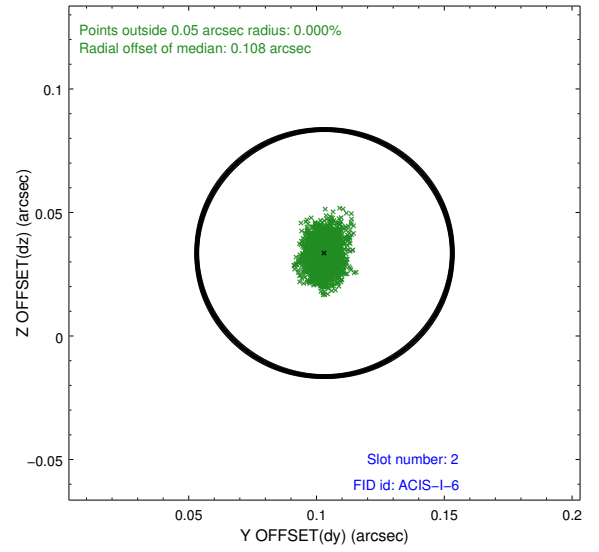
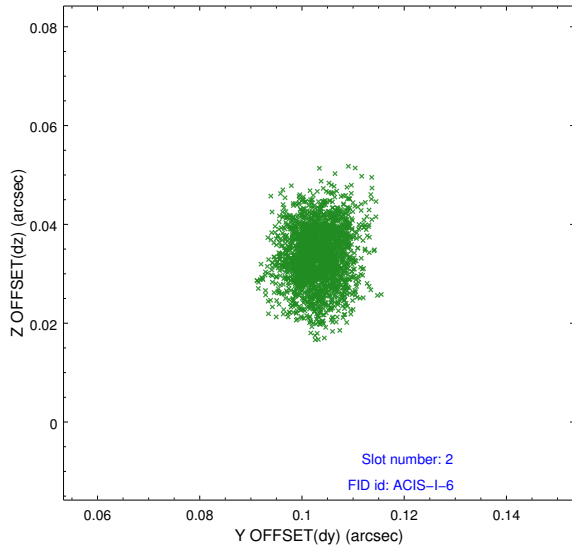
2.5.1 Slot 0



2.5.2 Slot 1



2.5.3 Slot 2



A Summary

A.1 Status

V&V Scientist	Beth Sundheim
V&V Date (YYYY-MM-DD)	2012.05.07
V&V Edition	1
V&V Disposition and Status	OK
V&V Charge Time	8.57770006

A.2 Comments