

V&V Reference Report

L2 ASCDS Version : 8.4.4

Observation 9118 - L2 Version 2
Chandra X-Ray Center

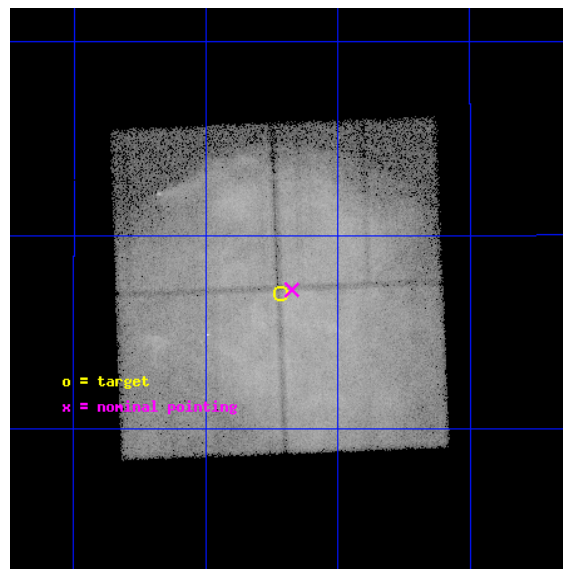
L2 Processing Date : May 4 2012

Contents

1	Front	2
2	OBI	3
2.1	OBI	3
2.1.1	Images	3
2.1.2	Bias	3
2.1.3	Parameters	4
2.1.4	Events	4
2.2	Compared Parameters	5
2.3	Aspect	6
2.4	Star Slots	9
2.4.1	Slot 3	9
2.4.2	Slot 4	10
2.4.3	Slot 5	11
2.4.4	Slot 6	12
2.4.5	Slot 7	13
2.5	FID Slots	14
2.5.1	Slot 0	14
2.5.2	Slot 1	15
2.5.3	Slot 2	16
A	Summary	17
A.1	Status	17
A.2	Comments	17

1 Front

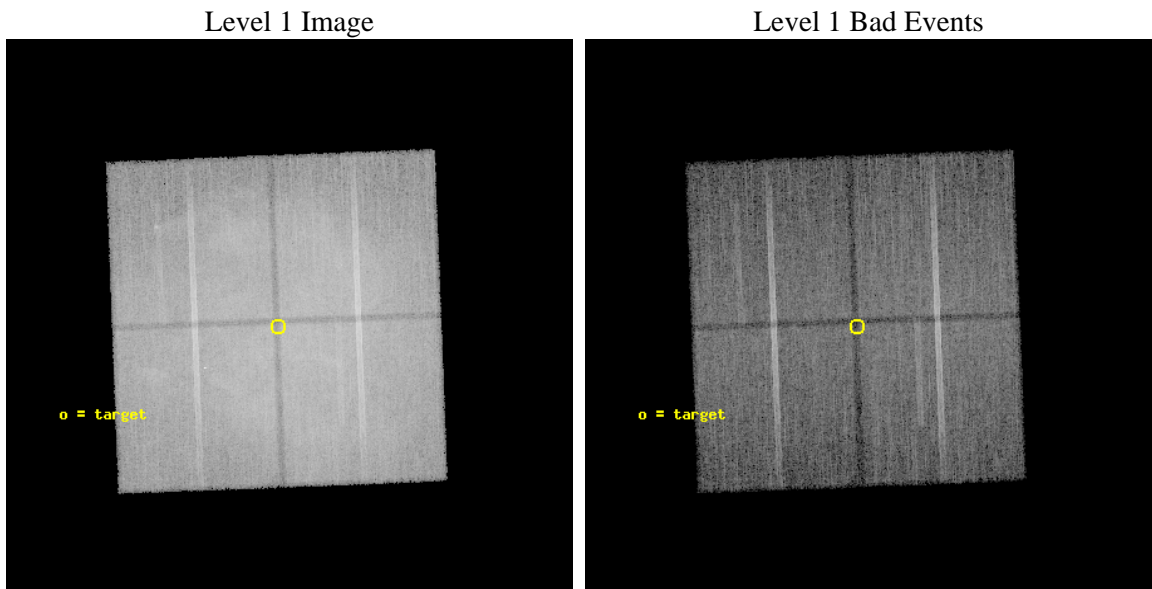
seq_num	500980	Sequence number
obs_id	9118	Observation id
title	Shock Interactions in the Supernova Remnant IC443	Proposal title
observer	Dr Una Hwang	Principal investigator
object	IC 443 Northeast Field	Source name
dtcycle	0	
cycle	P	events from which exps? Prim/Second/Both
ra_targ	94.30375	Observer's specified target RA [deg]
dec_targ	22.783403	Observer's specified target Dec [deg]
ra_nom	94.293665123579	Nominal RA [deg]
dec_nom	22.78651948823	Nominal Dec [deg]
roll_nom	87.795489855104	Nominal Roll [deg]
revision	2	Processing version of data
ontime	29055.76977706	Sum of GTIs [s]
livetime	28676.134754376	Livetime [s]
ontime0	29055.728737056	Sum of GTIs [s]
ontime1	29055.76977706	Sum of GTIs [s]
ontime2	29055.810817063	Sum of GTIs [s]
ontime3	29055.851857066	Sum of GTIs [s]
l2events	646596	Number of level 2 events



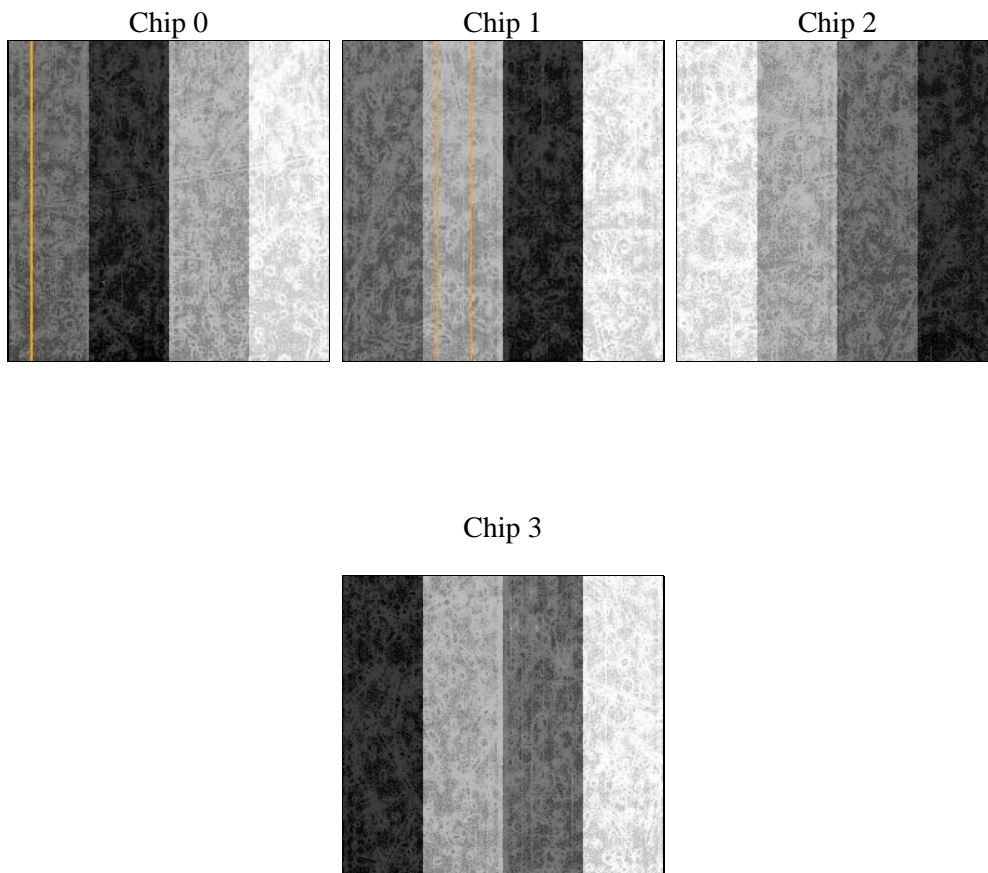
2 OBI

2.1 OBI

2.1.1 Images



2.1.2 Bias



2.1.3 Parameters

obi_num	0	Obi number	sched_exp_time	29000.000000	[s] Scheduled observation exposure time
ascdsver	8.4.4	Processing system revision	ontime	29055.76977706	Sum of GTIs [s]
caldbver	4.4.9	 	ontime0	29055.728737056	Sum of GTIs [s]
date	2012-05-04T14:20:48	Date and time of file creation	ontime1	29055.76977706	Sum of GTIs [s]
revision	2	Processing version of data	ontime2	29055.810817063	Sum of GTIs [s]
			ontime3	29055.851857066	Sum of GTIs [s]
			l1events	1651518	Number of level 1 events

2.1.4 Events

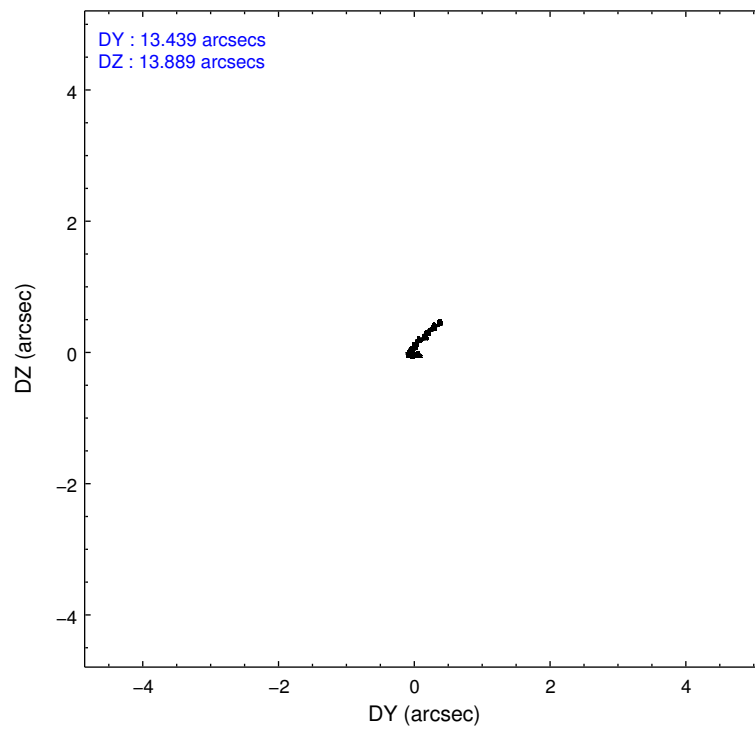
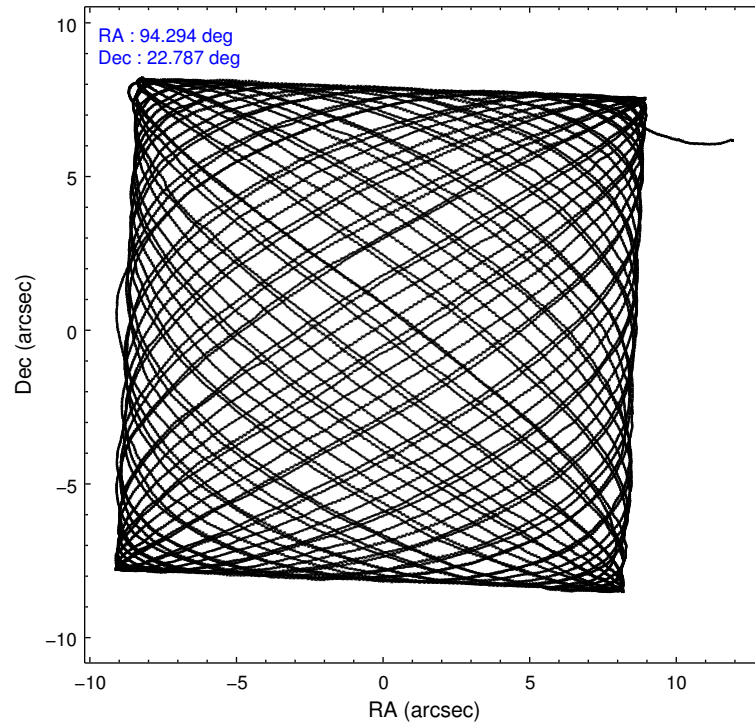
	ccd 0	ccd 1	ccd 2	ccd 3
level 1 events	362387	415789	405461	467881
rejected events	225709	227154	254344	248590
rejected %	62%	54%	62%	53%

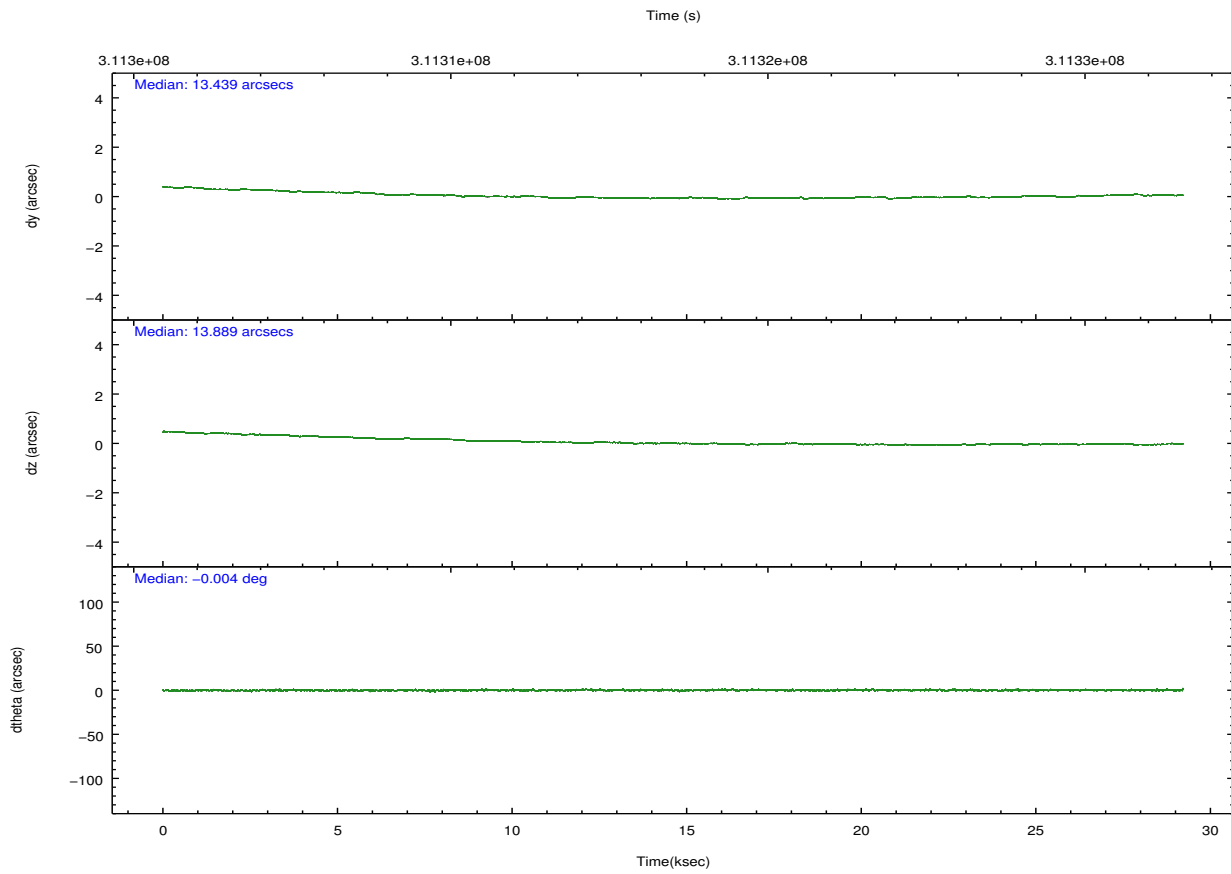
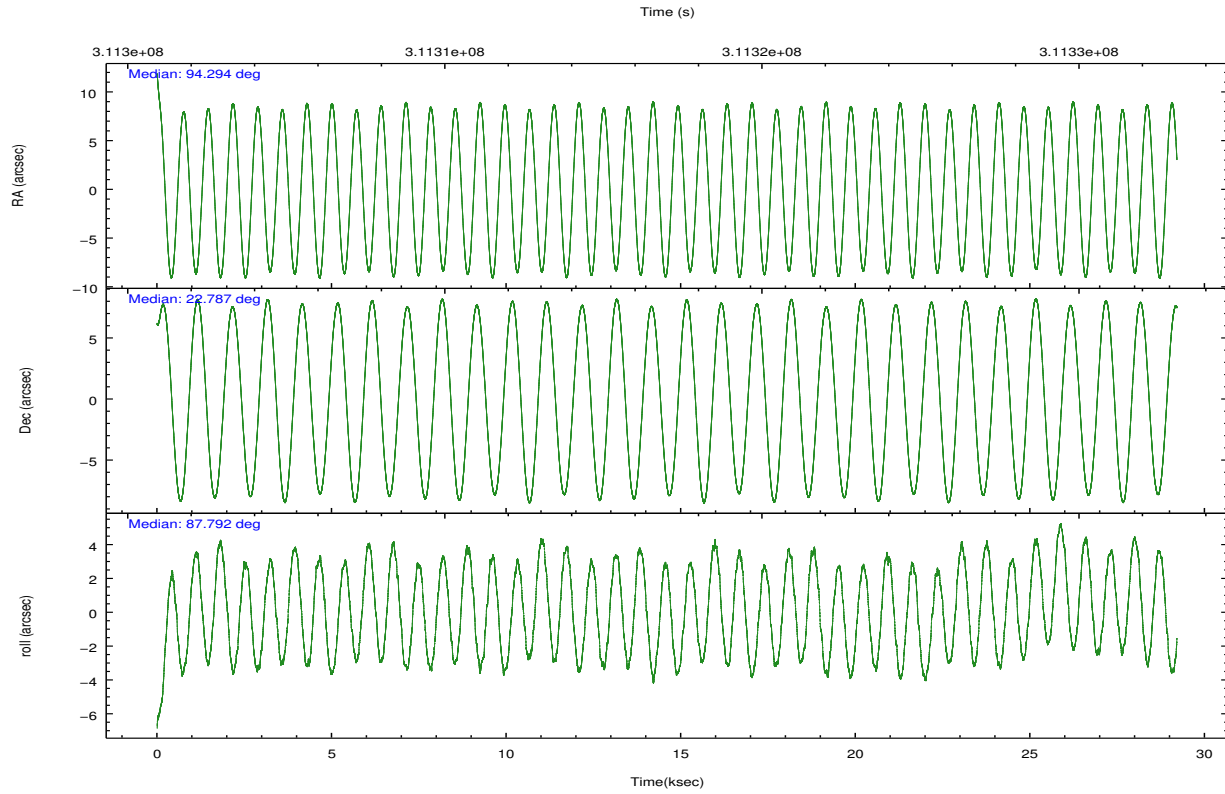
	ccd 0	ccd 1	ccd 2	ccd 3
grade 0 events	104127	145627	118328	174250
	28%	35%	29%	37%
grade 1 events	681	837	896	1119
	0%	0%	0%	0%
grade 2 events	15446	20925	15728	22128
	4%	5%	3%	4%
grade 3 events	5176	6730	5272	7318
	1%	1%	1%	1%
grade 4 events	5100	6650	5353	7595
	1%	1%	1%	1%
grade 5 events	11734	12802	11343	13729
	3%	3%	2%	2%
grade 6 events	6860	8738	6475	8044
	1%	2%	1%	1%
grade 7 events	213263	213480	242066	233698
	58%	51%	59%	49%

2.2 Compared Parameters

Parameter	Planned	Actual	Parameter	Planned	Actual
Instrument	ACIS	ACIS	Obspar format version number	7	7
Detector	ACIS-0123	ACIS-0123	Obspar file type	PREDICTED	ACTUAL
Grating	NONE	NONE	Obspar update status	NONE	UPDATED
Data mode	FAINT	FAINT	Number of optional ACIS chips dropped	0	0
Observation mode	POINTING	POINTING	On-chip summing requested	N	N
[deg] Pointing RA	94.307661	94.29366512357882	Subarray requested	NONE	NONE
[deg] Pointing Dec	22.762233	22.78651948822993	Alternating exposures requested	N	N
[deg] Pointing Roll	87.581389	87.79548985510382	[s] Primary exposure time	0.000000	3.1
[mm] SIM focus pos	-0.782348	-0.7809083437167272			
[mm] SIM defocus	0	0.001439871863259334			
[mm] SIM translation stage pos	-233.592463	-233.5874344608287			
[mm] SIM translation stage offset	0	-0.005018542100998502			
[s] Observation start time (MET)	311302614.184000	311301734.69835			
Observation start date	2007-11-13T00:55:49	2007-11-13T00:42:14			
[s] Observation end time (MET)	311331614.184000	311332549.78734			
Observation end date	2007-11-13T08:59:09	2007-11-13T09:15:49			
Read mode	TIMED	TIMED			

2.3 Aspect



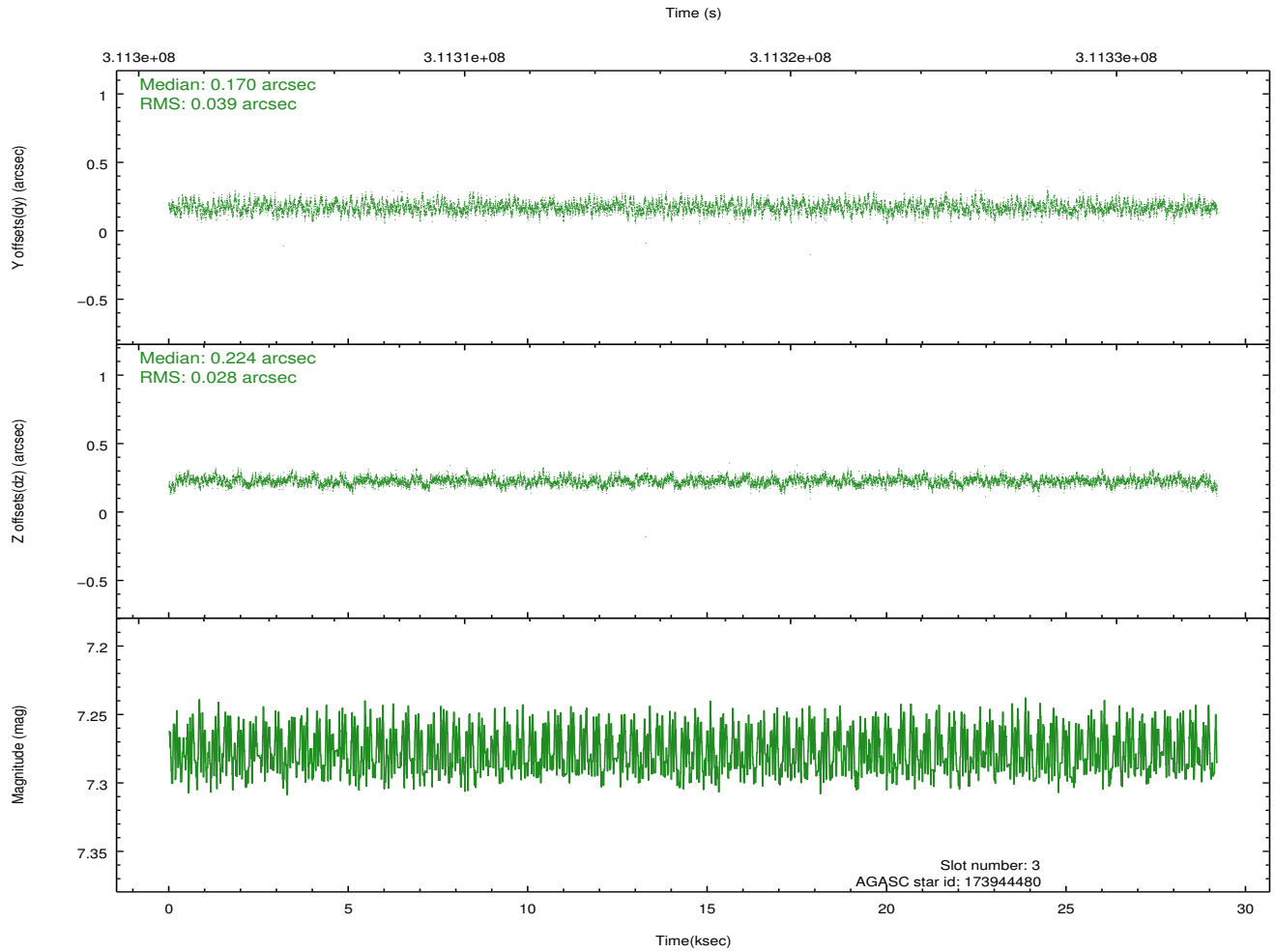
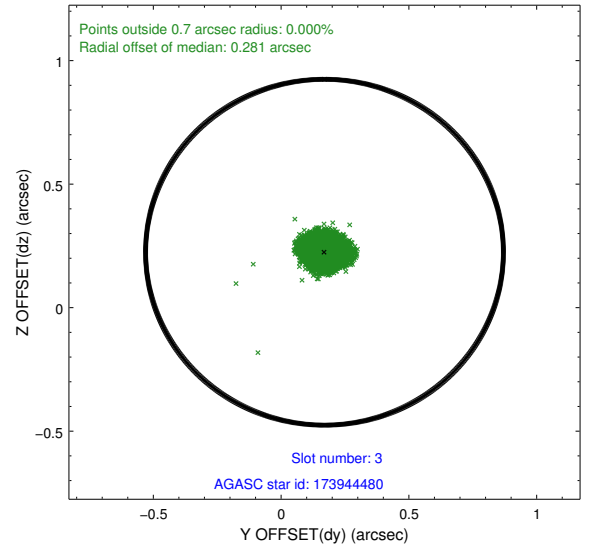
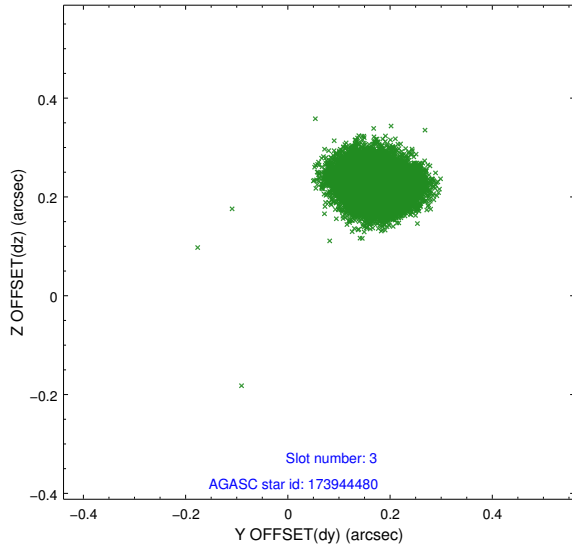


Slot Statistics

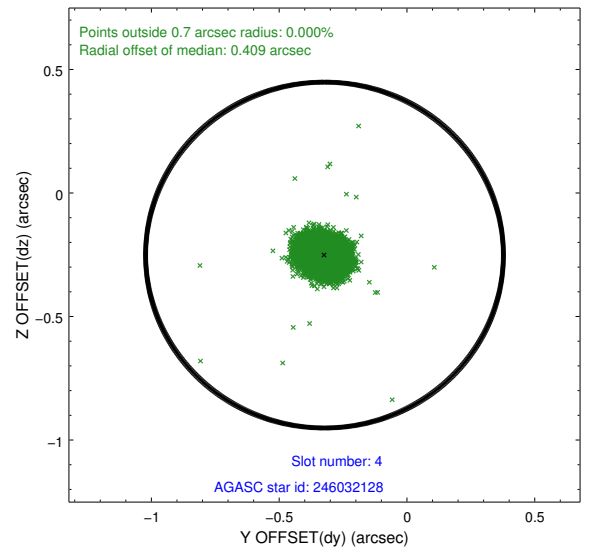
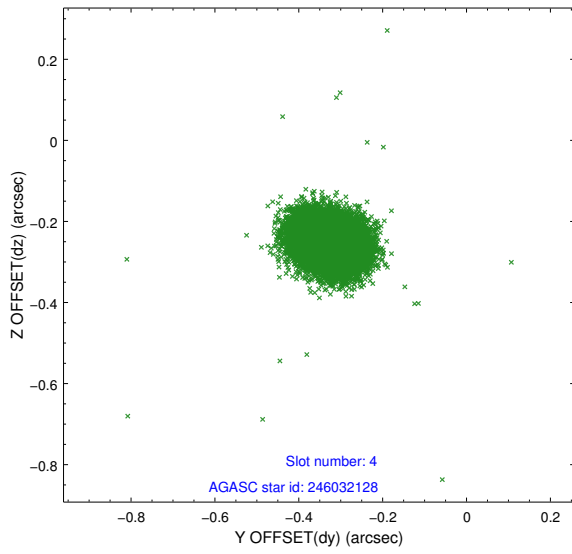
slot	status	id	mag	n_pts	med_dy	med_dz	dr1	dr2	ra	dec	mean_y	mean_z
0	FID	ACIS-I-1	7.23	7124	0.065	0.003	0.007	0.014	0.000000	0.000000	926.13	-837.50
1	FID	ACIS-I-2	7.14	7123	-0.054	-0.050	0.010	0.022	0.000000	0.000000	-768.04	-844.10
2	FID	ACIS-I-5	7.22	7123	-0.103	0.120	0.008	0.015	0.000000	0.000000	-1822.43	1059.95
3	GUIDE	173944480	7.28	14246	0.170	0.224	0.052	0.083	94.334818	22.143978	-2219.69	-184.16
4	GUIDE	246032128	8.57	14237	-0.323	-0.251	0.059	0.097	93.682548	23.361115	2070.78	2155.36
5	GUIDE	246034408	8.17	14245	-0.076	-0.137	0.053	0.089	94.024247	23.193583	1512.76	1002.94
6	GUIDE	246160104	7.07	14247	-0.080	0.242	0.060	0.097	94.843849	23.274506	1920.80	-1693.16
7	GUIDE	173936752	8.84	14241	0.309	-0.076	0.066	0.107	94.217691	22.170571	-2140.28	209.59

2.4 Star Slots

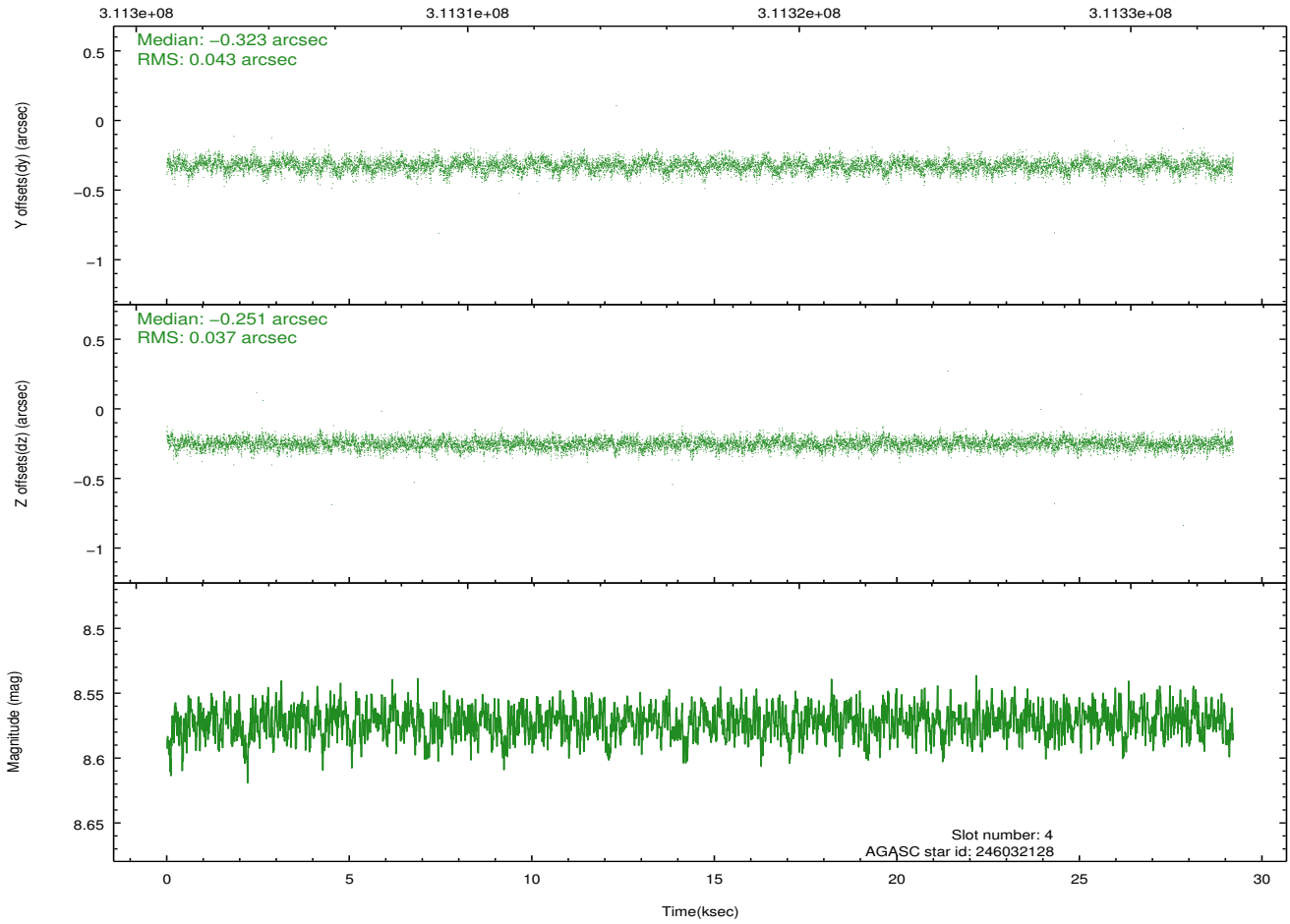
2.4.1 Slot 3



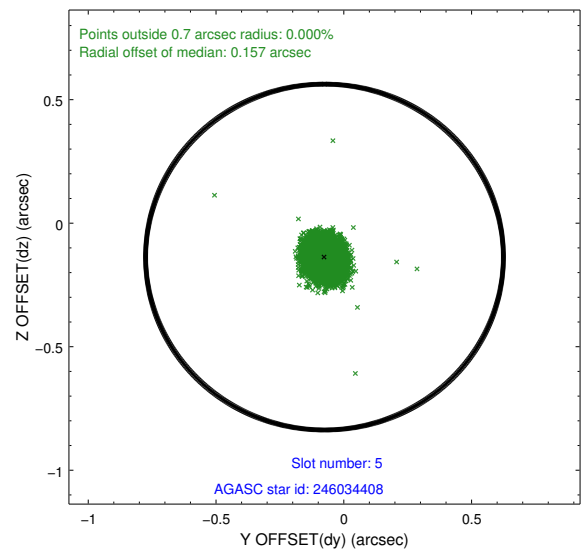
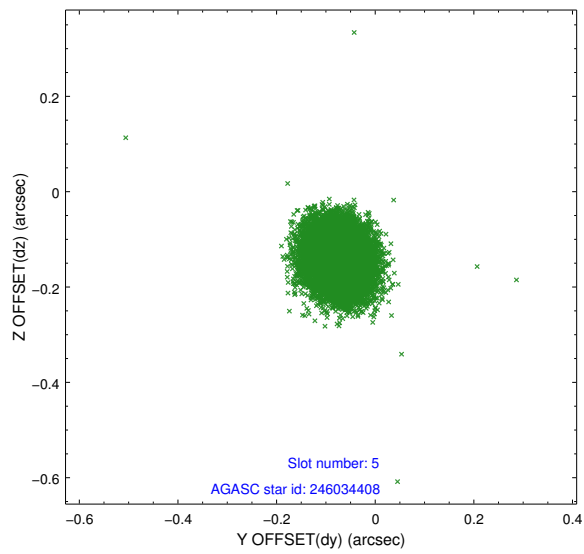
2.4.2 Slot 4



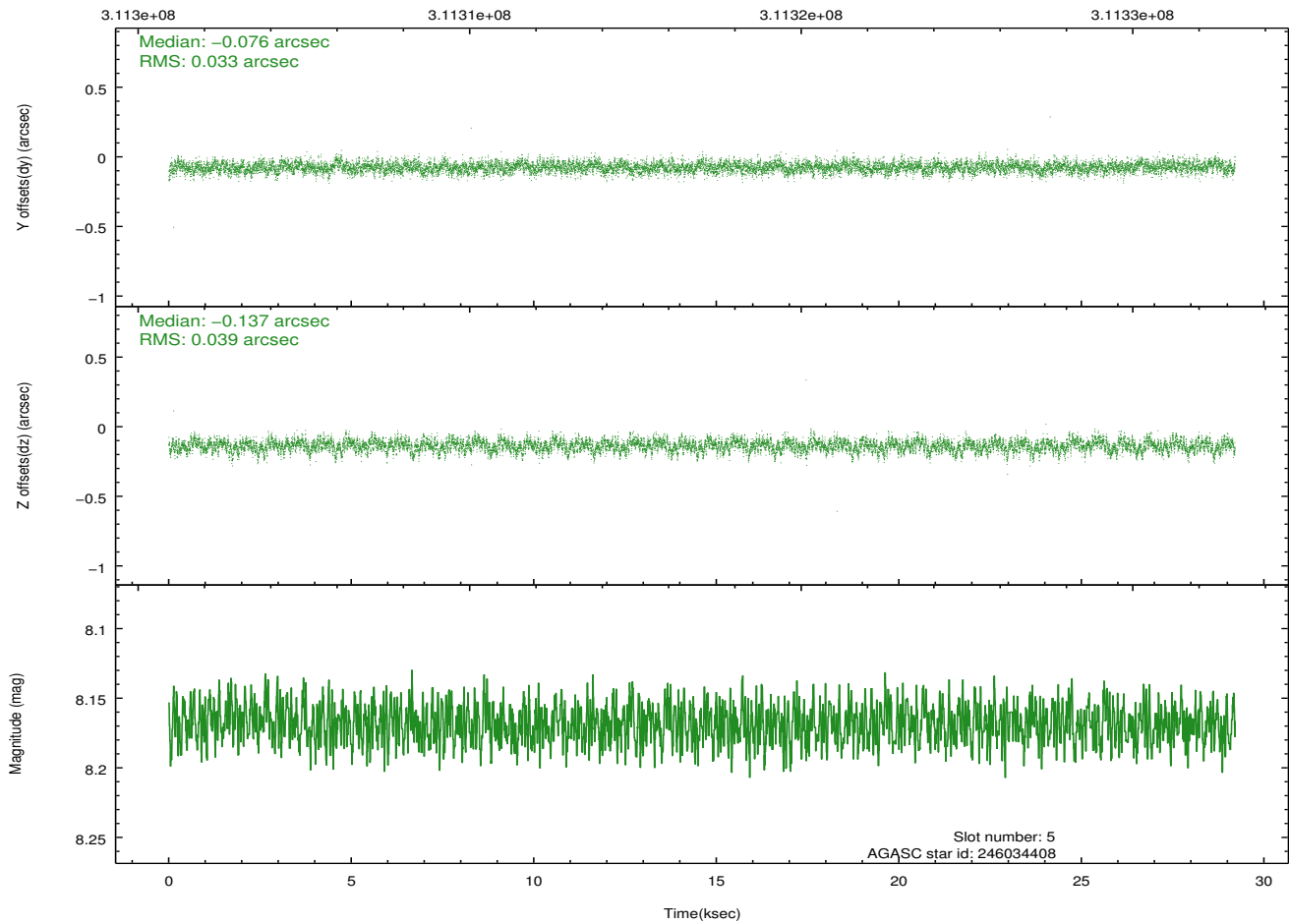
Time (s)



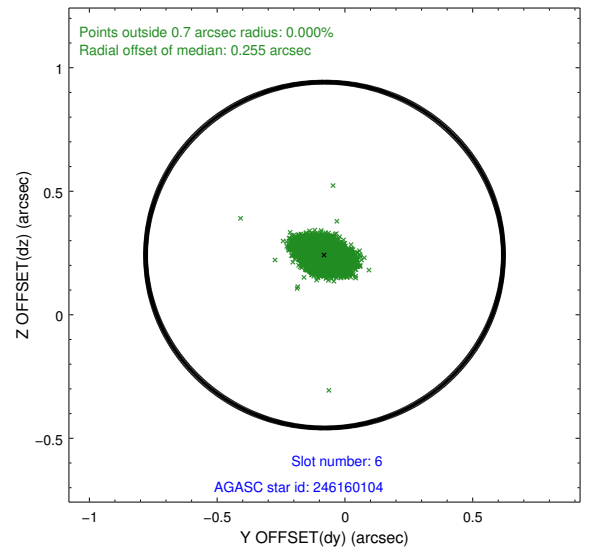
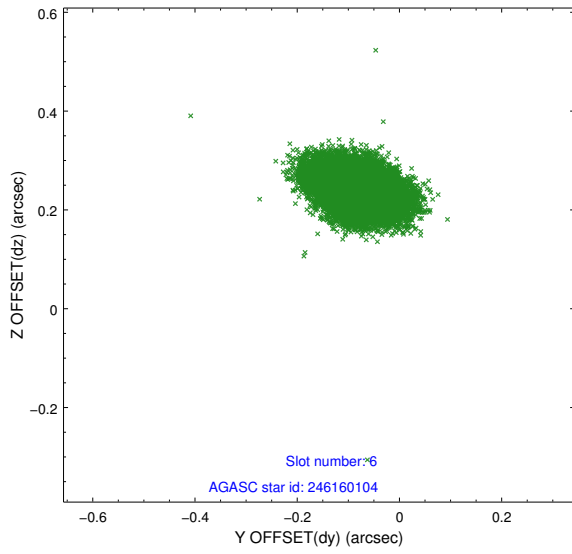
2.4.3 Slot 5



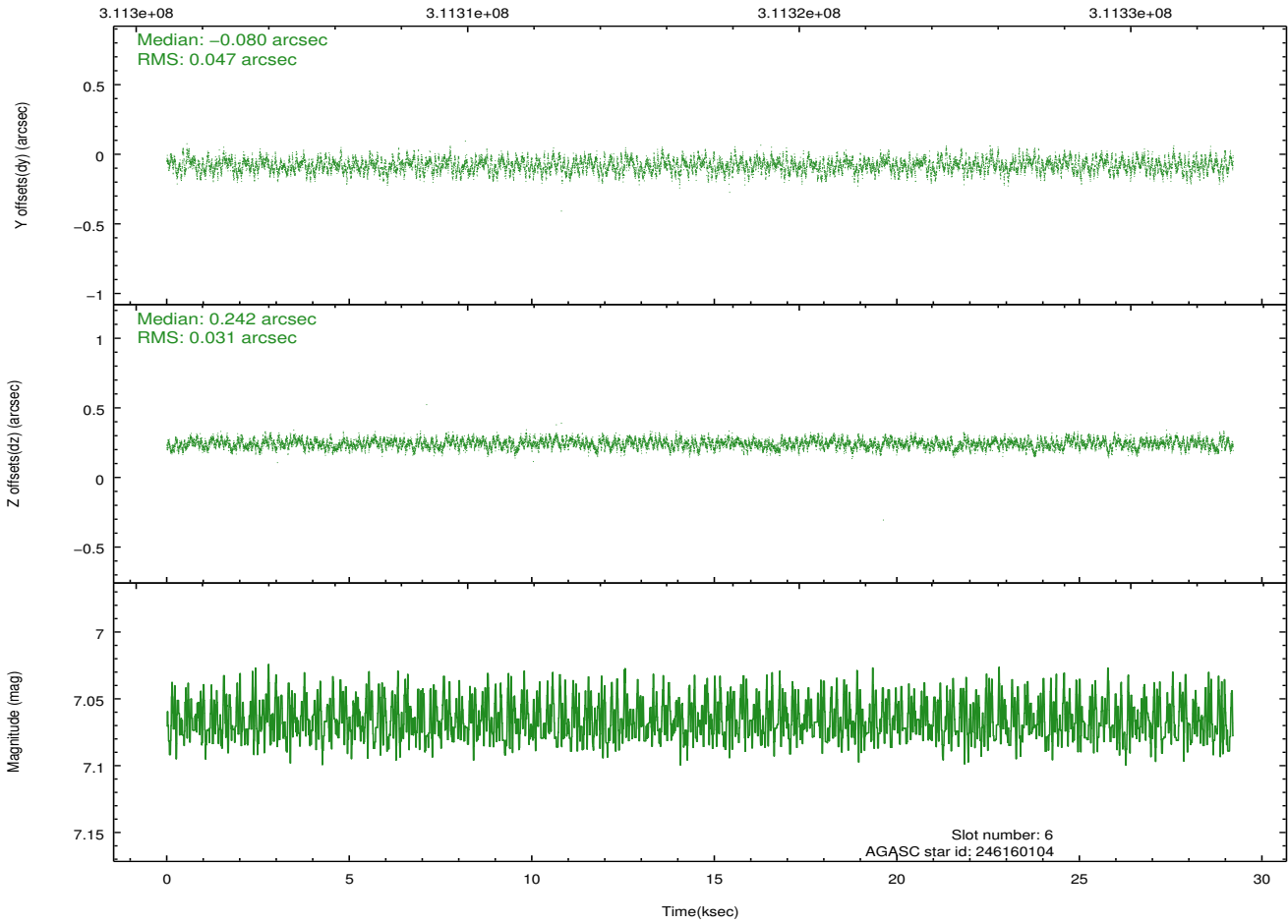
Time (s)



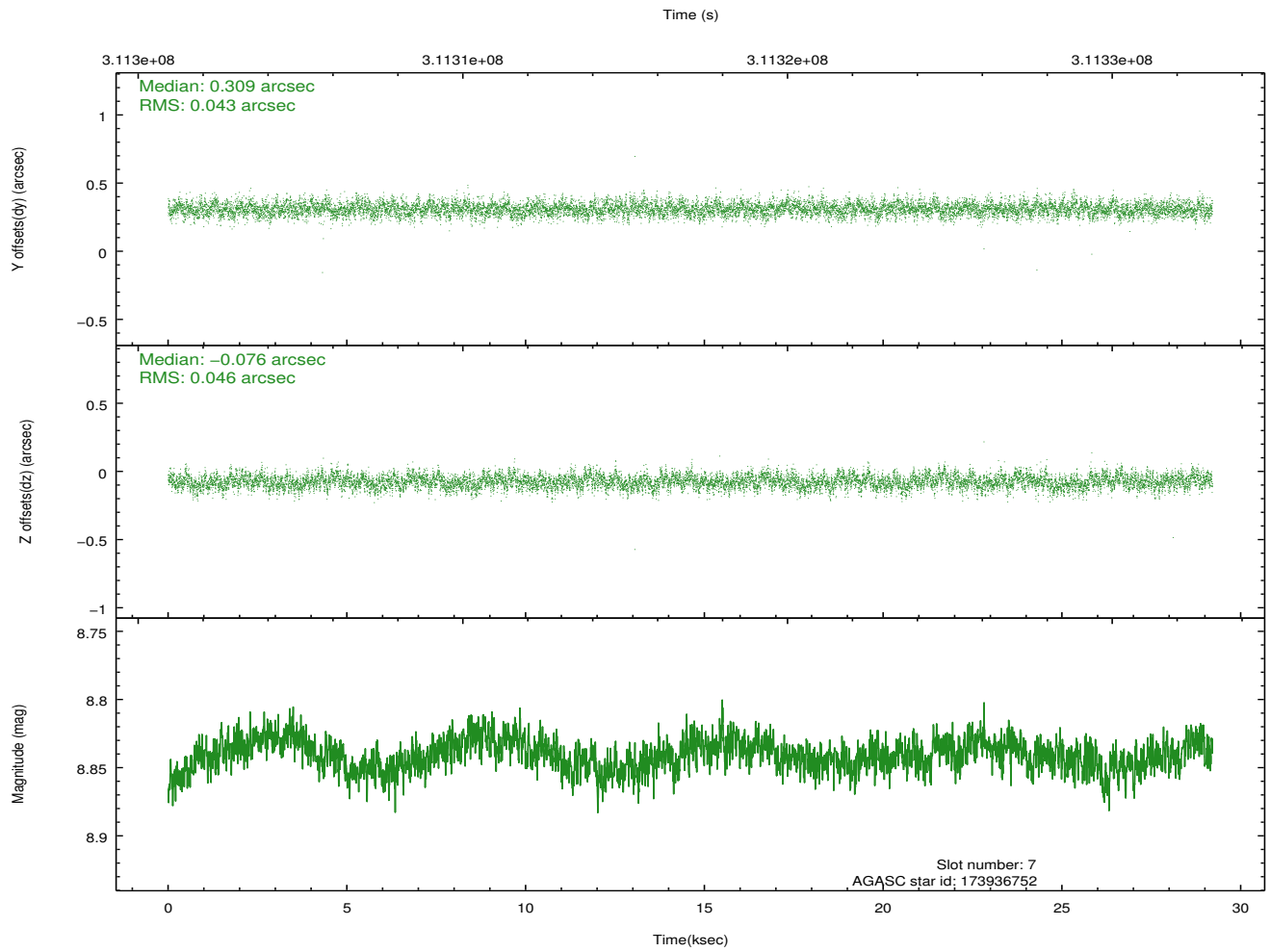
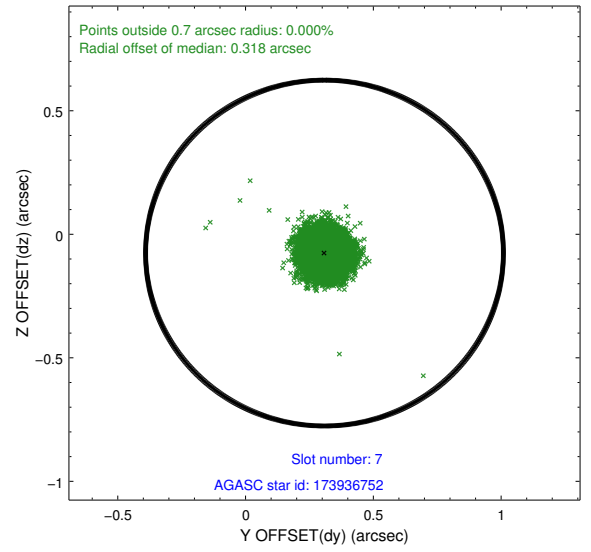
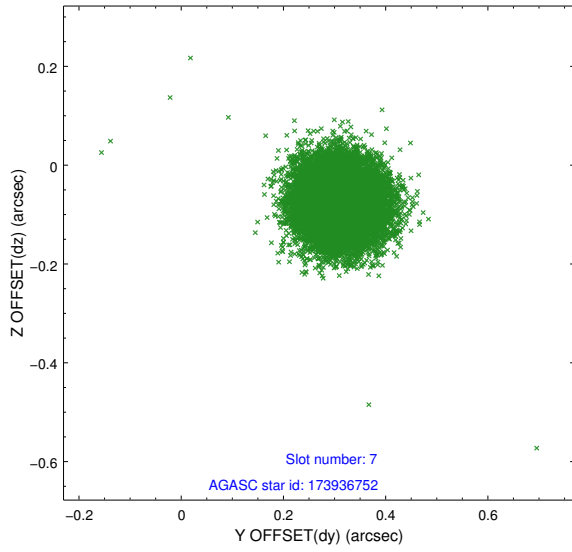
2.4.4 Slot 6



Time (s)

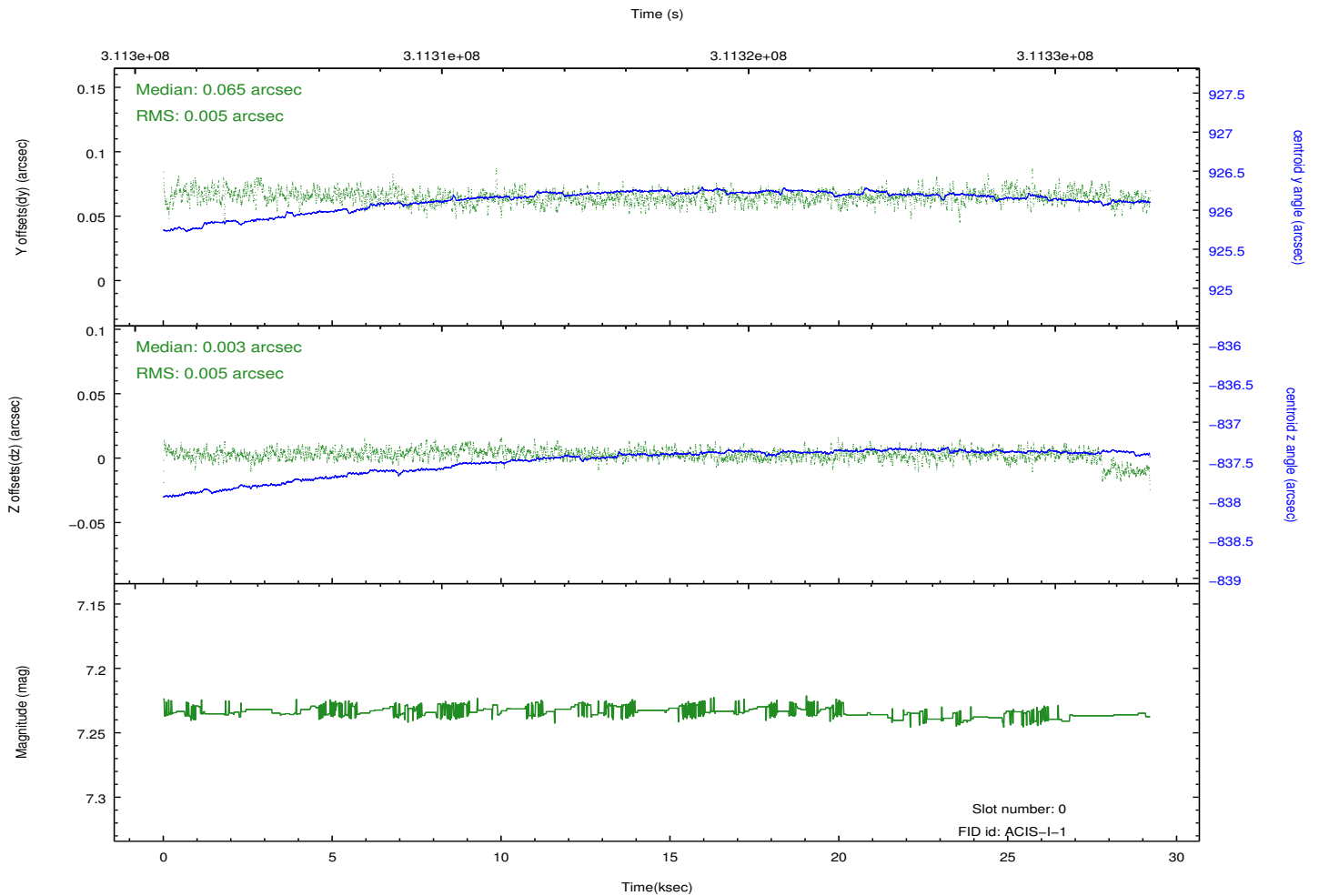
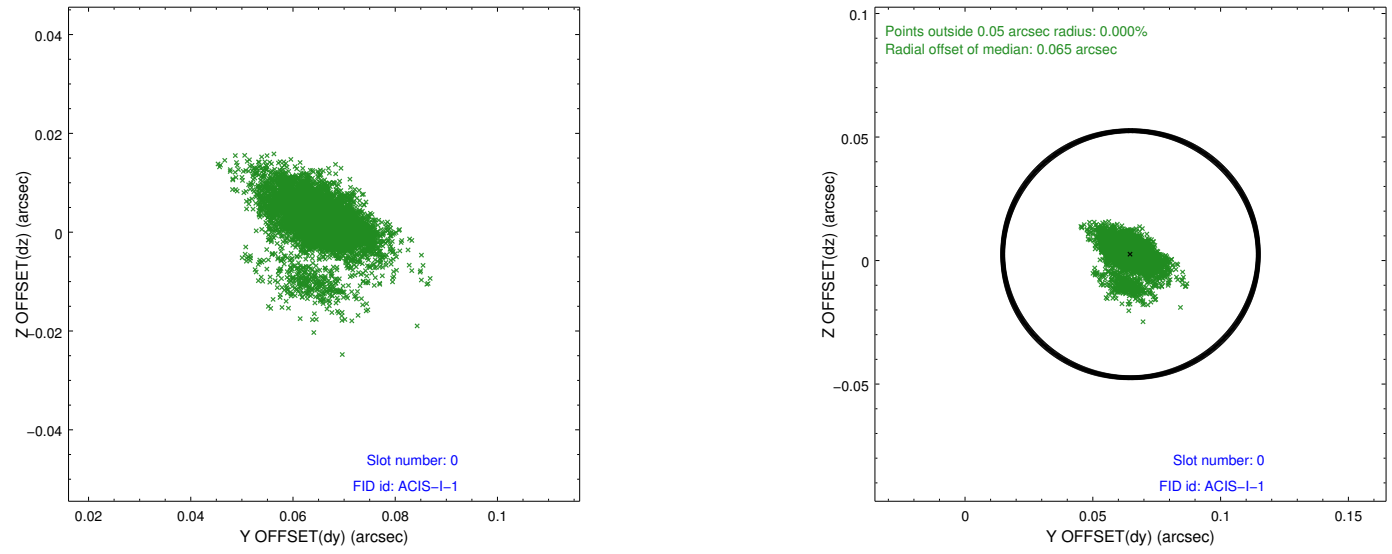


2.4.5 Slot 7

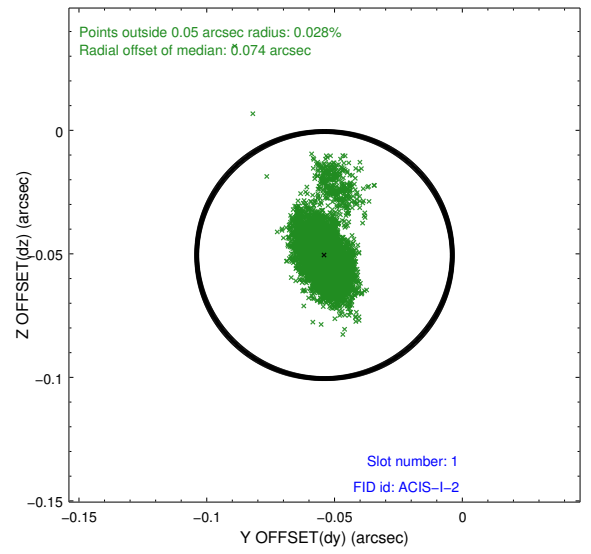
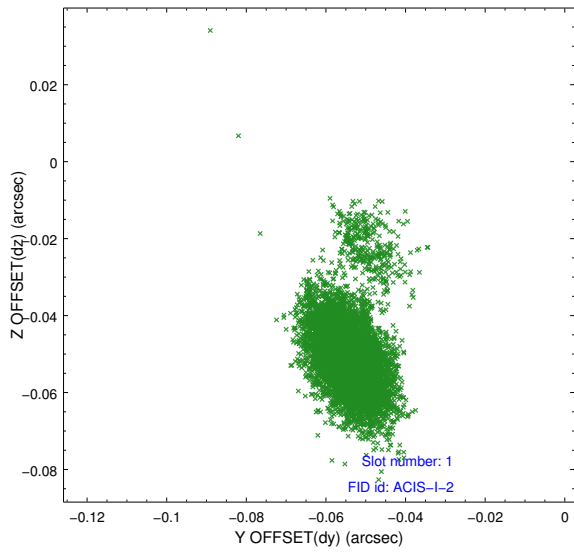


2.5 FID Slots

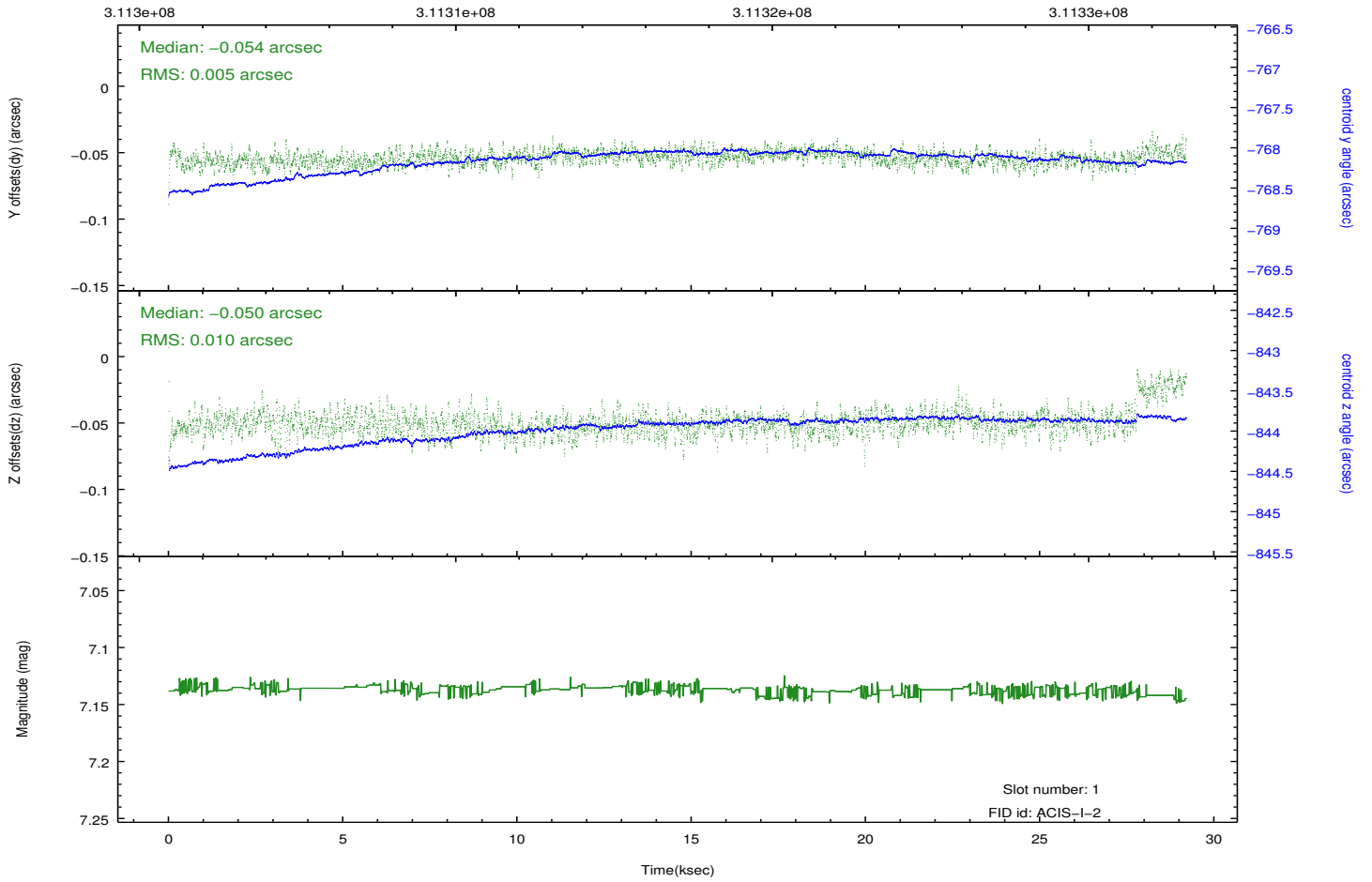
2.5.1 Slot 0



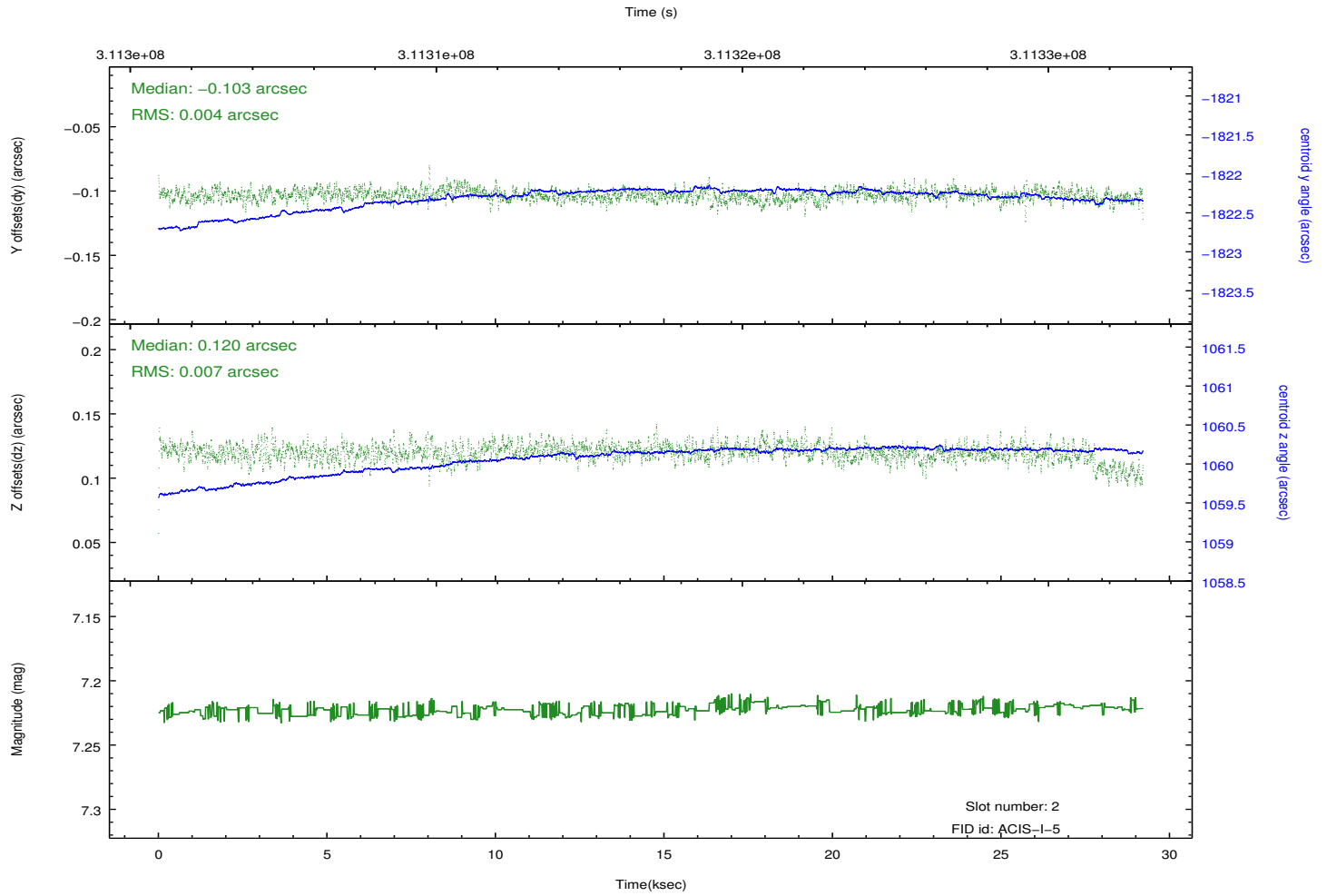
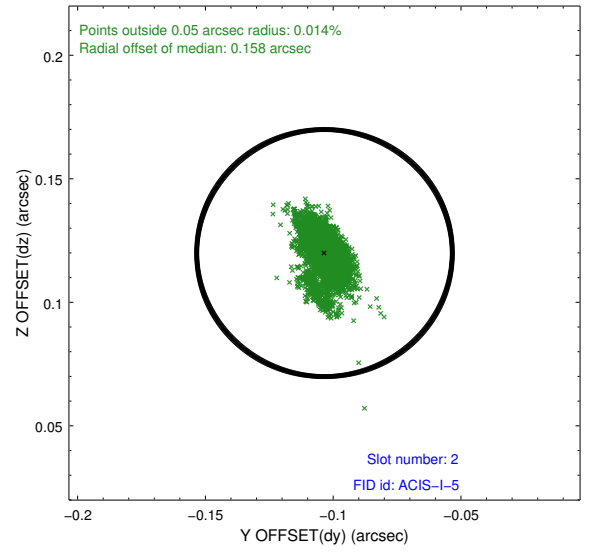
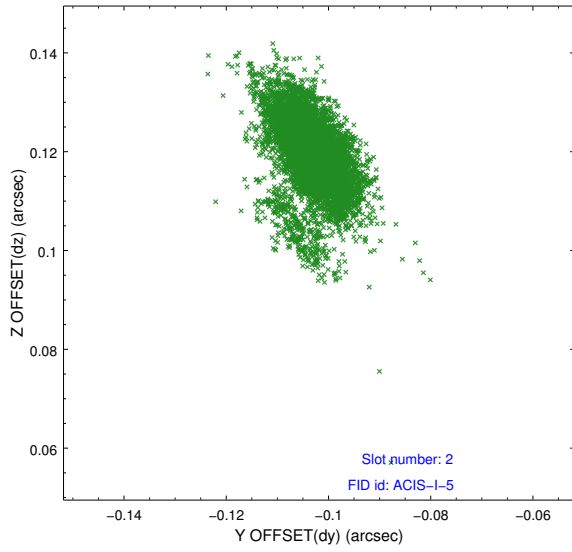
2.5.2 Slot 1



Time (s)



2.5.3 Slot 2



A Summary

A.1 Status

V&V Scientist	Jen Lauer
V&V Date (YYYY-MM-DD)	2012.05.07
V&V Edition	1
V&V Disposition and Status	OK
V&V Charge Time	29.0563002

A.2 Comments