

V&V Reference Report

L2 ASCDS Version : 8.4.4

Observation 9408 - L2 Version 2
Chandra X-Ray Center

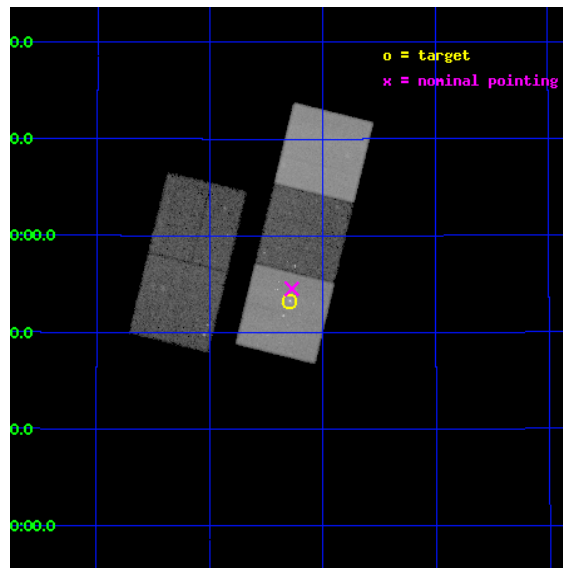
L2 Processing Date : May 7 2012

Contents

1	Front	2
2	OBI	3
2.1	OBI	3
2.1.1	Images	3
2.1.2	Bias	3
2.1.3	Parameters	4
2.1.4	Events	4
2.2	Compared Parameters	5
2.3	Aspect	6
2.4	Star Slots	9
2.4.1	Slot 3	9
2.4.2	Slot 4	10
2.4.3	Slot 5	11
2.4.4	Slot 6	12
2.4.5	Slot 7	13
2.5	FID Slots	14
2.5.1	Slot 0	14
2.5.2	Slot 1	15
2.5.3	Slot 2	16
A	Summary	17
A.1	Status	17
A.2	Comments	17

1 Front

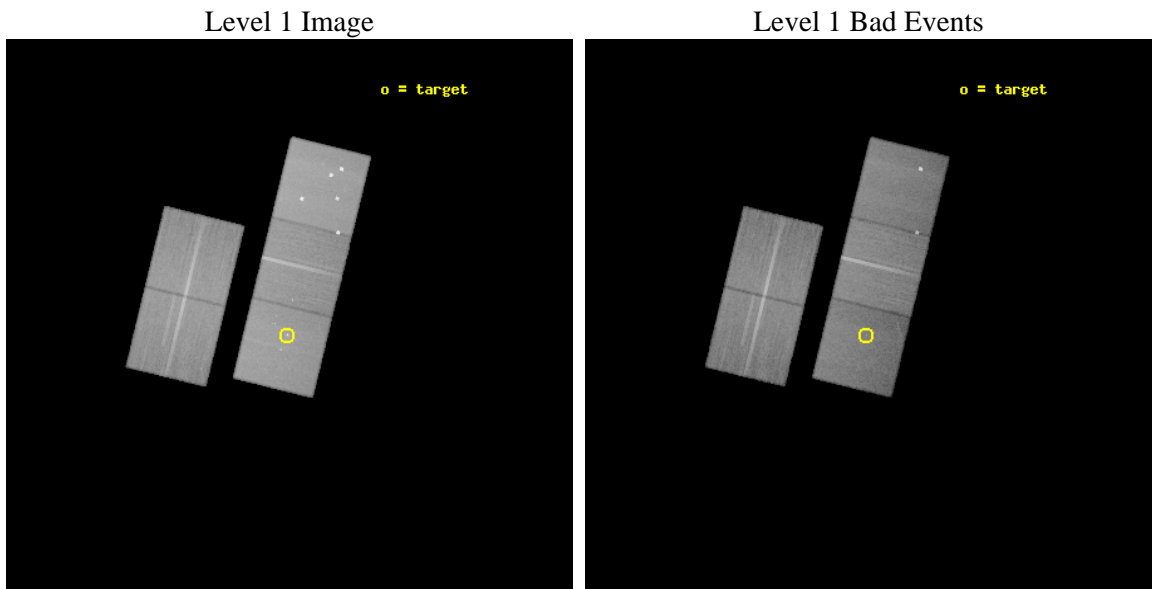
seq_num	800744	Sequence number
obs_id	9408	Observation id
title	The cluster around the powerful radio-loud quasar 3C186 at z=1.1	P
observer	Dr. Aneta Siemiginowska	Principal investigator
object	3C 186	Source name
dtycycle	0	
cycle	P	events from which exps? Prim/Second/Both
ra_targ	116.0725	Observer's specified target RA [deg]
dec_targ	37.888083	Observer's specified target Dec [deg]
ra_nom	116.06831307766	Nominal RA [deg]
dec_nom	37.908664637678	Nominal Dec [deg]
roll_nom	103.70777695244	Nominal Roll [deg]
revision	2	Processing version of data
ontime	40148.100308776	Sum of GTIs [s]
livetime	39623.53582164	Livetime [s]
ontime2	40132.39535737	Sum of GTIs [s]
ontime3	40144.959308505	Sum of GTIs [s]
ontime5	40148.100308776	Sum of GTIs [s]
ontime6	40144.959308505	Sum of GTIs [s]
ontime7	40148.100308776	Sum of GTIs [s]
l2events	456438	Number of level 2 events



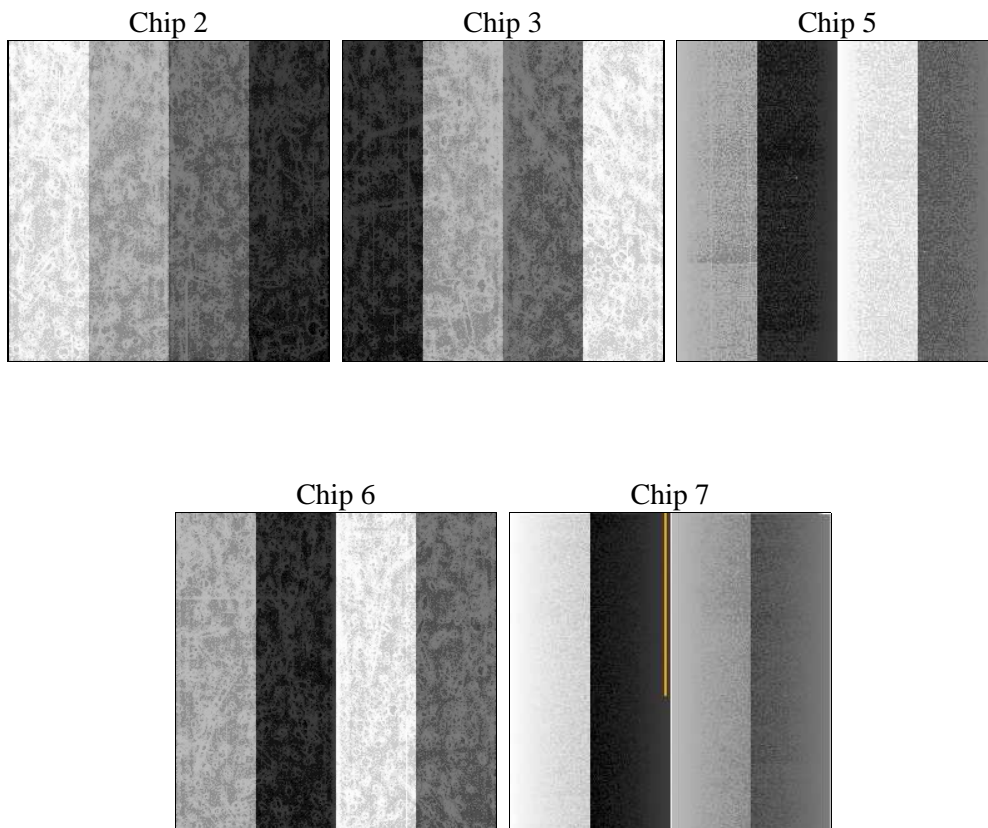
2 OBI

2.1 OBI

2.1.1 Images



2.1.2 Bias



2.1.3 Parameters

obi_num	0	Obi number	sched_exp_time	40000.000000	[s] Scheduled observation exposure time
ascdsver	8.4.4	Processing system revision	ontime	40148.100308776	Sum of GTIs [s]
caldbver	4.4.9	 	ontime2	40132.39535737	Sum of GTIs [s]
date	2012-05-07T03:39:20	Date and time of file creation	ontime3	40144.959308505	Sum of GTIs [s]
revision	2	Processing version of data	ontime5	40148.100308776	Sum of GTIs [s]
			ontime6	40144.959308505	Sum of GTIs [s]
			ontime7	40148.100308776	Sum of GTIs [s]
			l1events	1848256	Number of level 1 events

2.1.4 Events

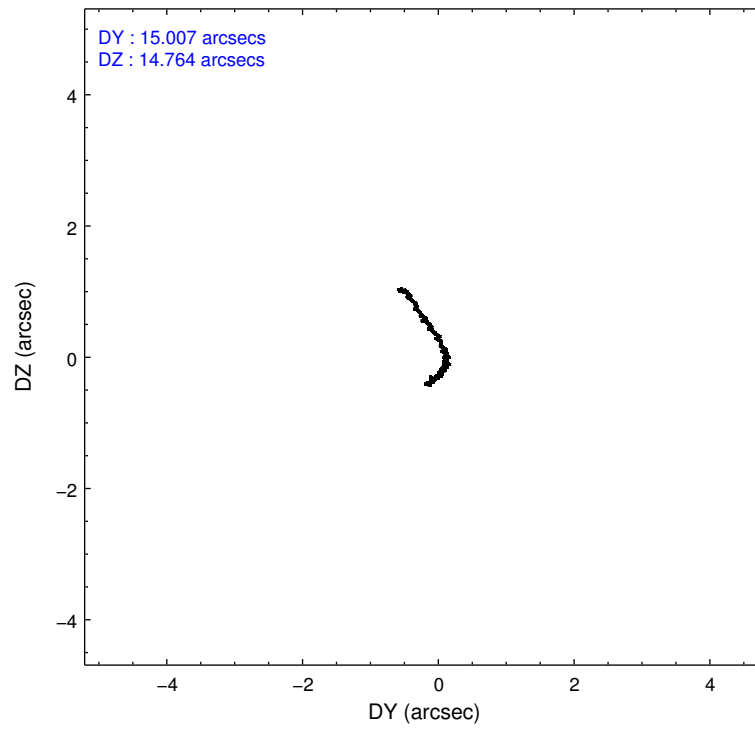
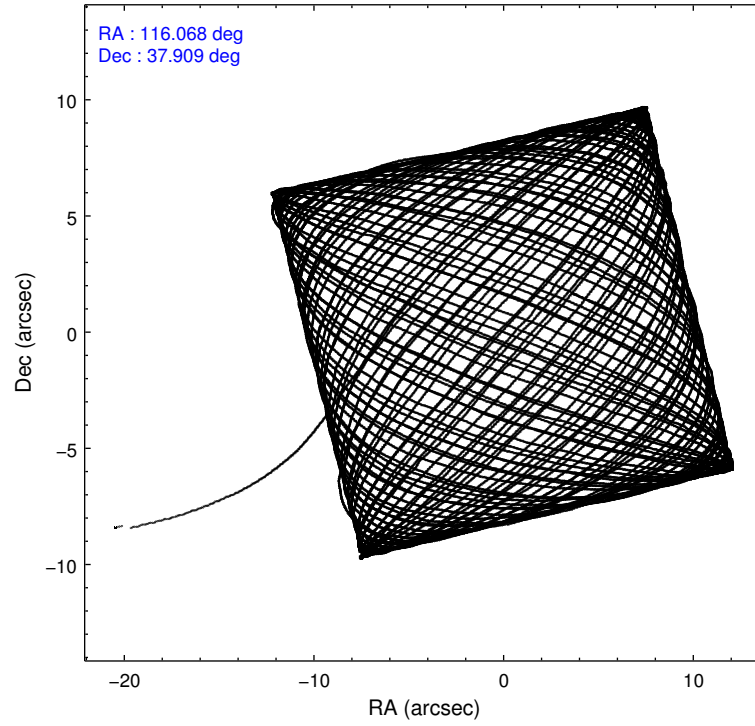
	ccd 2	ccd 3	ccd 5	ccd 6	ccd 7
level 1 events	333342	317800	491909	332888	372317
rejected events	302513	287176	239460	298756	201745
rejected %	90%	90%	48%	89%	54%

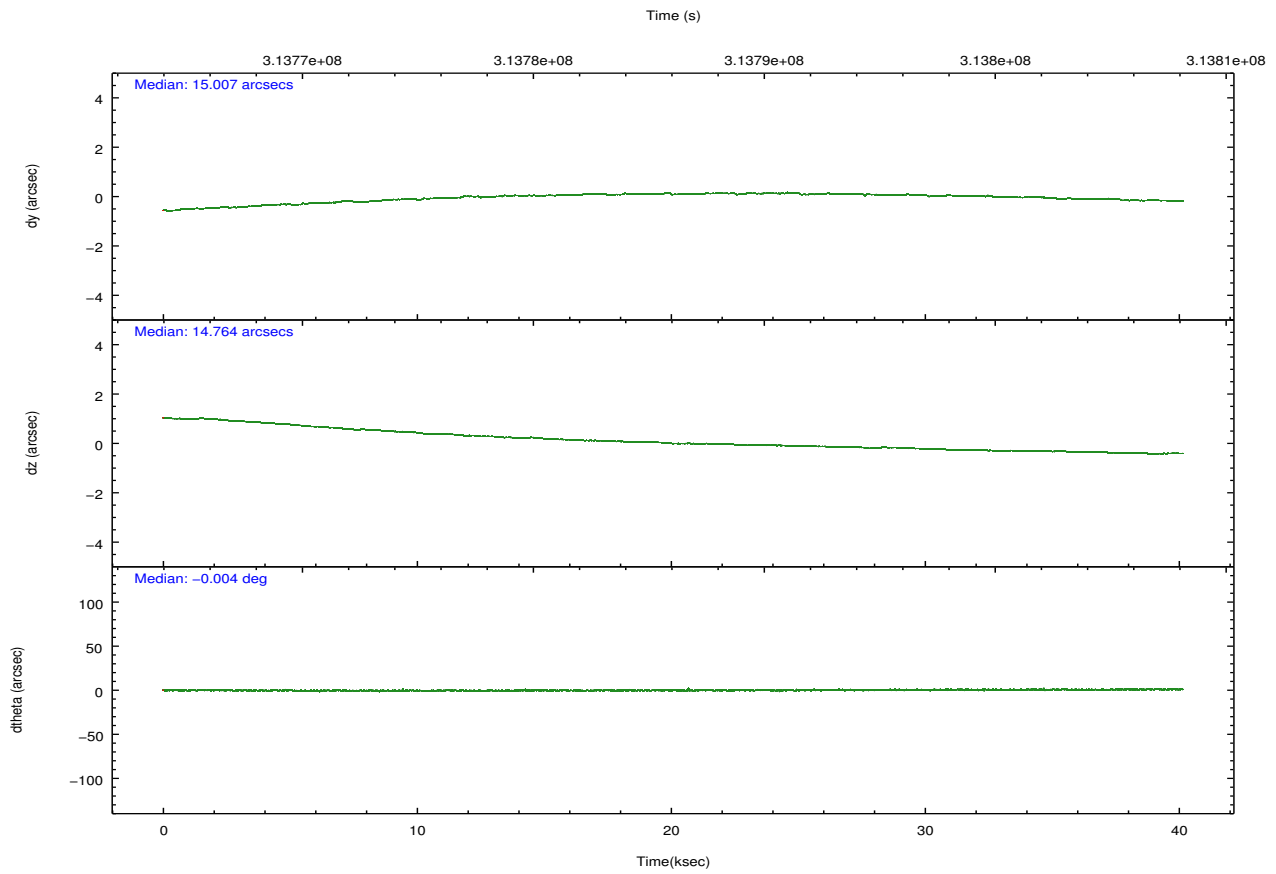
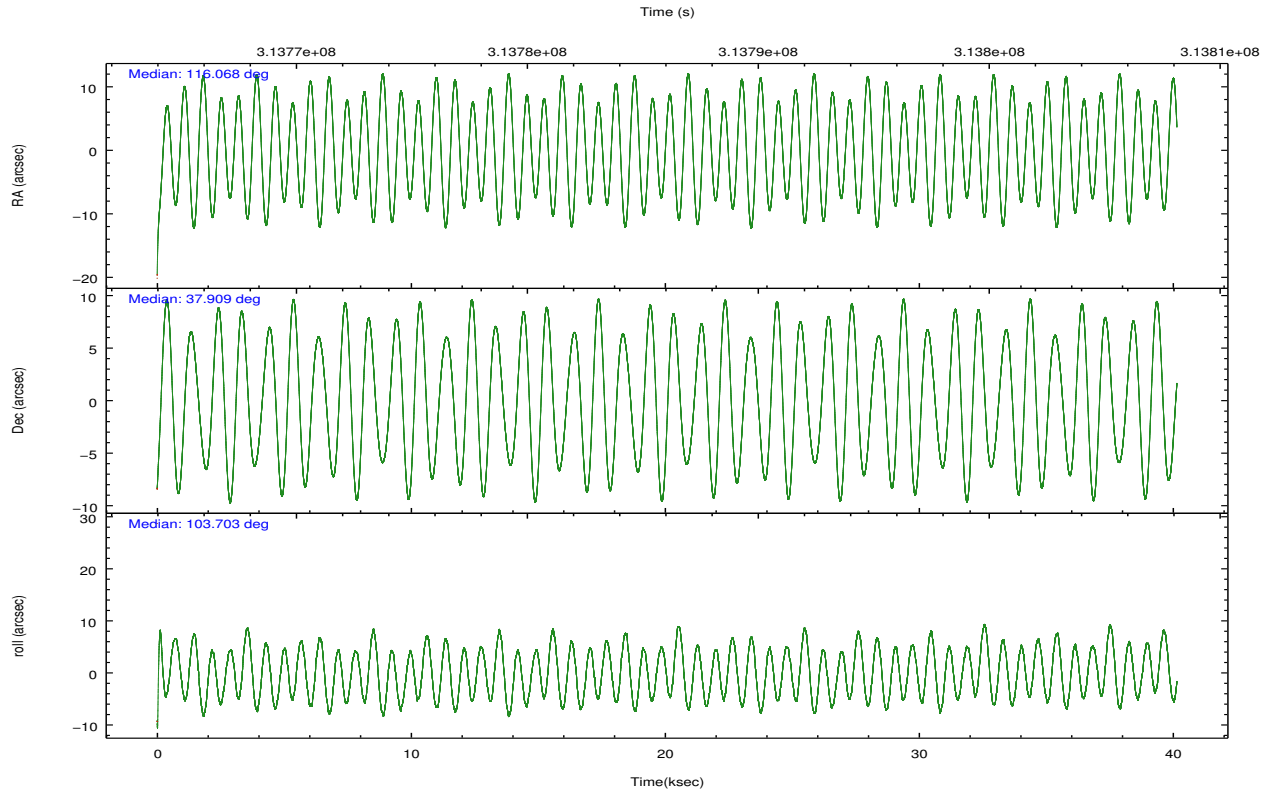
	ccd 2	ccd 3	ccd 5	ccd 6	ccd 7
grade 0 events	11108	10754	43731	12050	17042
	3%	3%	8%	3%	4%
grade 1 events	177	179	1633	171	471
	0%	0%	0%	0%	0%
grade 2 events	7440	6621	70535	7508	35068
	2%	2%	14%	2%	9%
grade 3 events	3264	3535	9589	3705	15641
	0%	1%	1%	1%	4%
grade 4 events	3436	3601	10582	3565	15524
	1%	1%	2%	1%	4%
grade 5 events	10485	13192	40218	13317	38323
	3%	4%	8%	4%	10%
grade 6 events	5654	6194	118719	7380	87739
	1%	1%	24%	2%	23%
grade 7 events	291778	273724	196902	285192	162509
	87%	86%	40%	85%	43%

2.2 Compared Parameters

Parameter	Planned	Actual	Parameter	Planned	Actual
Instrument	ACIS	ACIS	Obspar format version number	7	7
Detector	ACIS-23567	ACIS-23567	Obspar file type	PREDICTED	ACTUAL
Grating	NONE	NONE	Obspar update status	NONE	UPDATED
Data mode	VFAINT	VFAINT	Number of optional ACIS chips dropped	0	0
Observation mode	POINTING	POINTING	On-chip summing requested	N	N
[deg] Pointing RA	116.092594	116.0683130776576	Subarray requested	NONE	NONE
[deg] Pointing Dec	37.889156	37.90866463767753	Alternating exposures requested	N	N
[deg] Pointing Roll	103.536248	103.7077769524418	[s] Primary exposure time	0.000000	3.1
[mm] SIM focus pos	-0.684267	-0.6828225247311905			
[mm] SIM defocus	0	0.001444936568705701			
[mm] SIM translation stage pos	-190.132523	-190.1425803651734			
[mm] SIM translation stage offset	0	0.01005778216563158			
[s] Observation start time (MET)	313766127.184000	313765093.22987			
Observation start date	2007-12-11T13:14:22	2007-12-11T12:58:13			
[s] Observation end time (MET)	313806127.184000	313806646.21938			
Observation end date	2007-12-12T00:21:02	2007-12-12T00:30:46			
Read mode	TIMED	TIMED			

2.3 Aspect



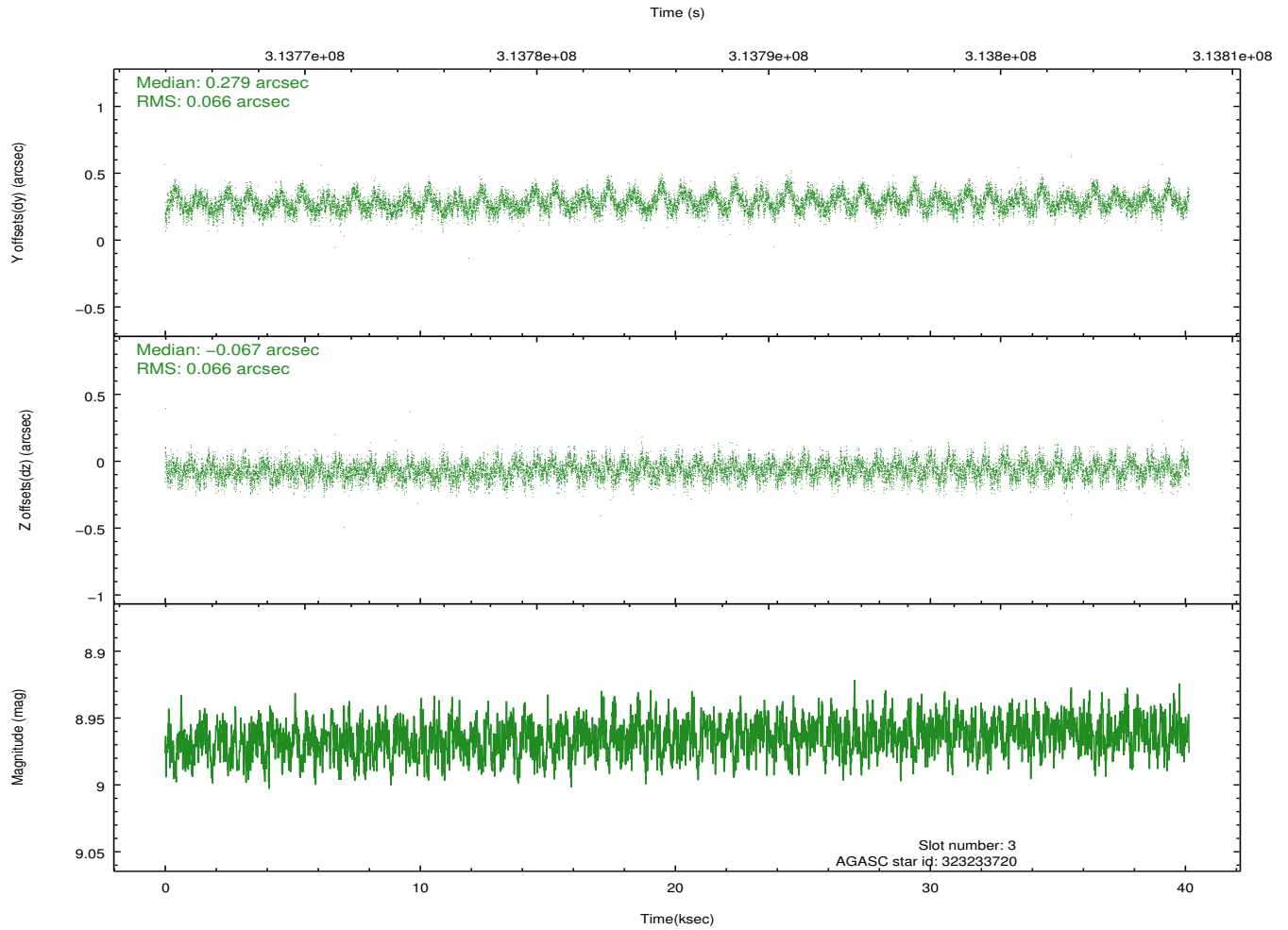
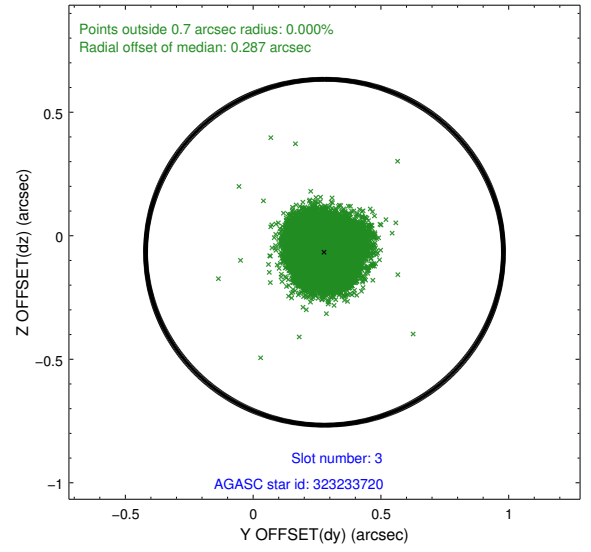
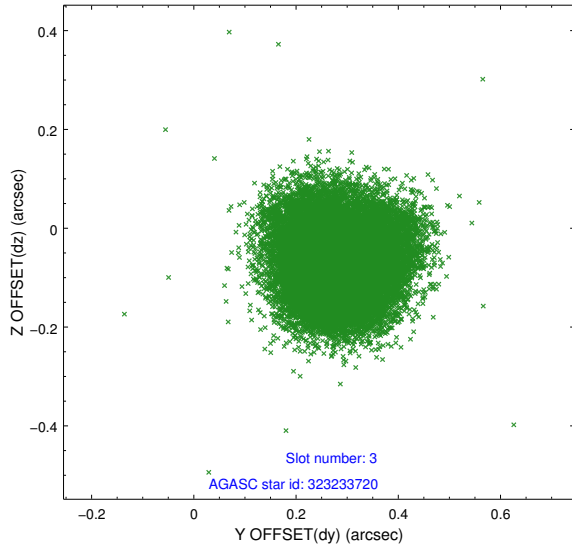


Slot Statistics

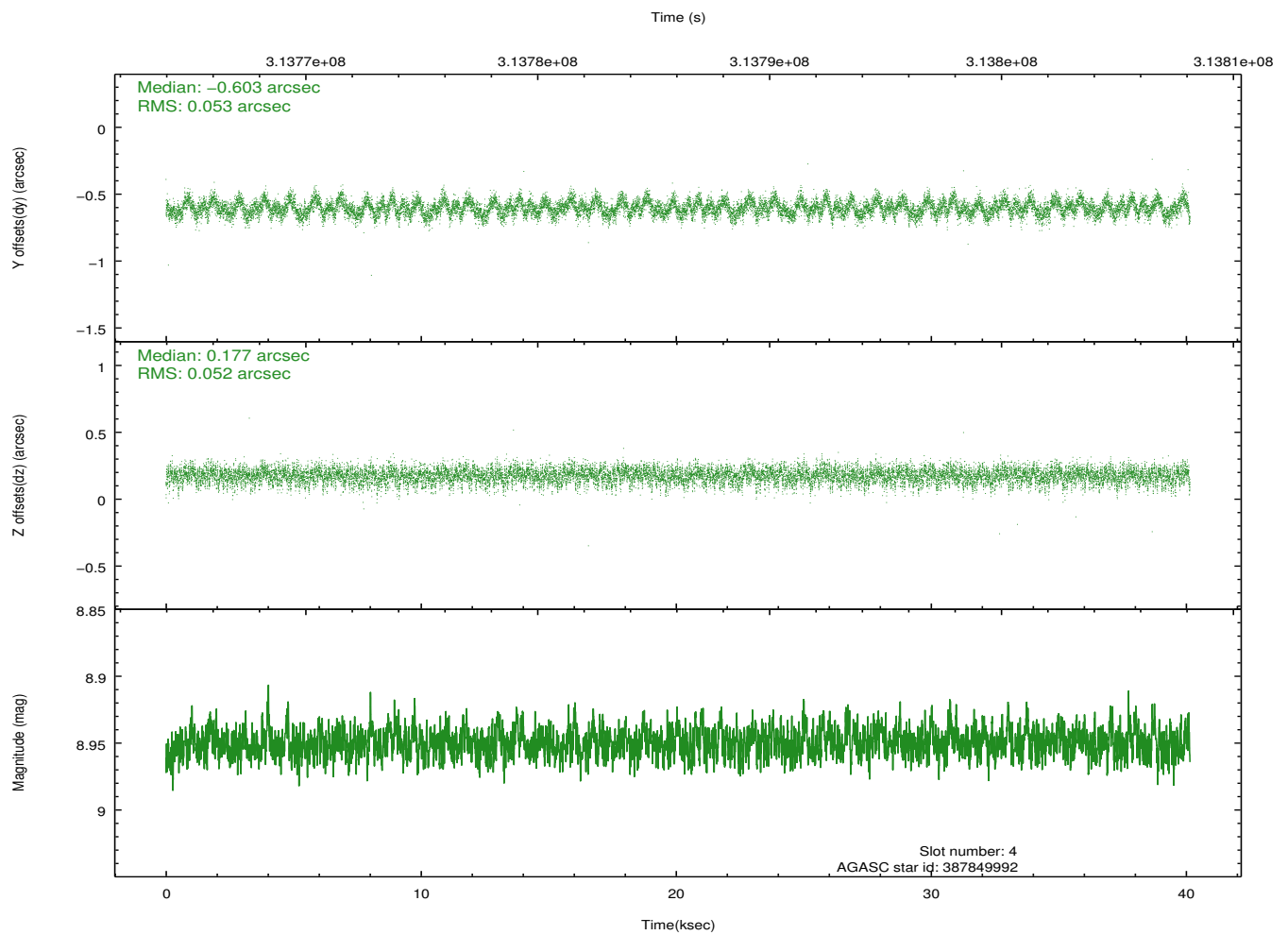
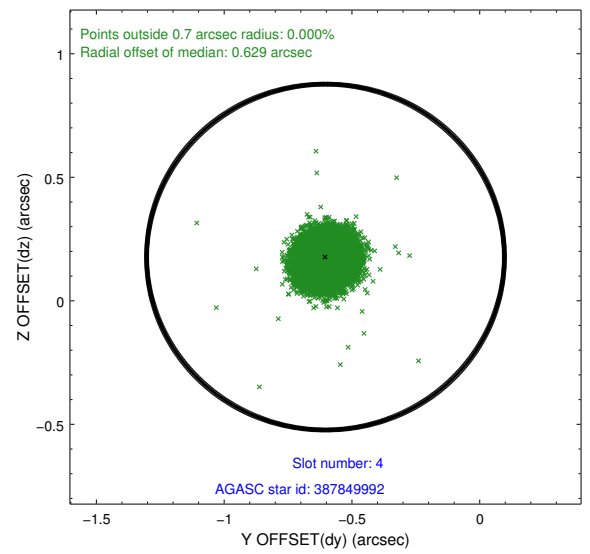
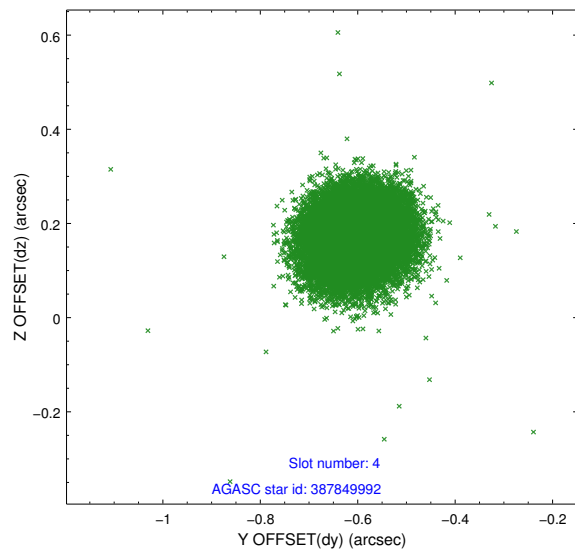
slot	status	id	mag	n_pts	med_dy	med_dz	dr1	dr2	ra	dec	mean_y	mean_z
0	FID	ACIS-S-2	7.09	9794	-0.096	-0.034	0.010	0.017	0.000000	0.000000	-768.00	-1736.25
1	FID	ACIS-S-4	7.19	9794	0.196	0.055	0.011	0.019	0.000000	0.000000	2145.55	172.31
2	FID	ACIS-S-5	7.22	9794	-0.132	-0.013	0.013	0.023	0.000000	0.000000	-1820.87	165.92
3	GUIDE	323233720	8.96	19572	0.279	-0.067	0.100	0.157	116.958511	37.414357	-2229.93	-2010.02
4	GUIDE	387849992	8.95	19575	-0.603	0.177	0.079	0.125	116.439680	37.644416	-1087.02	-755.88
5	GUIDE	387854512	8.82	19558	0.176	-0.010	0.075	0.120	116.240956	37.674293	-850.47	-229.89
6	GUIDE	387855168	7.80	19585	0.069	0.010	0.059	0.097	116.658195	38.272157	971.30	-1877.69
7	GUIDE	387851416	9.40	19564	0.073	-0.106	0.103	0.166	115.426967	38.141179	1329.79	1618.51

2.4 Star Slots

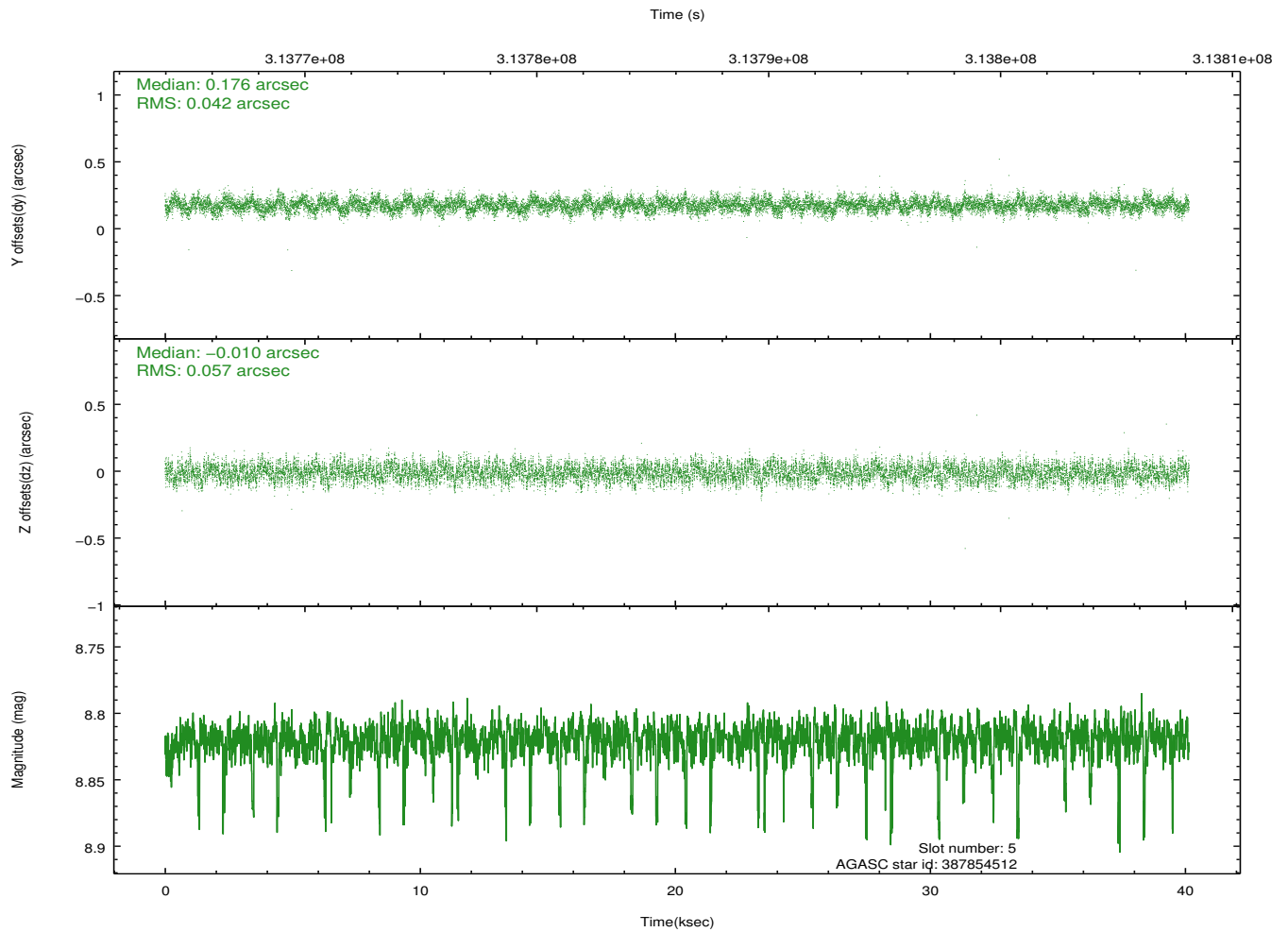
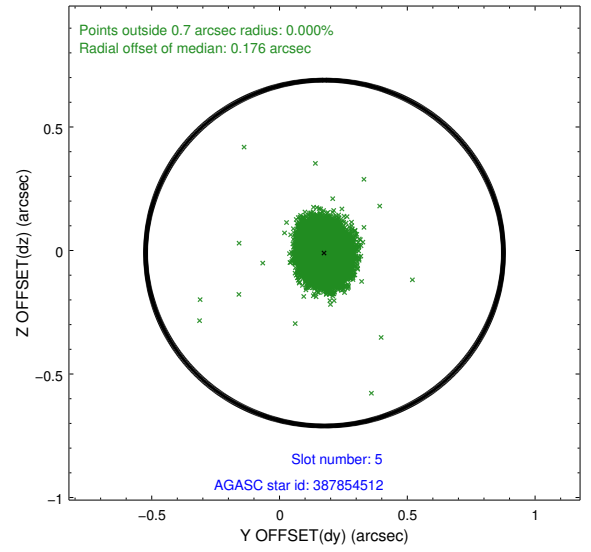
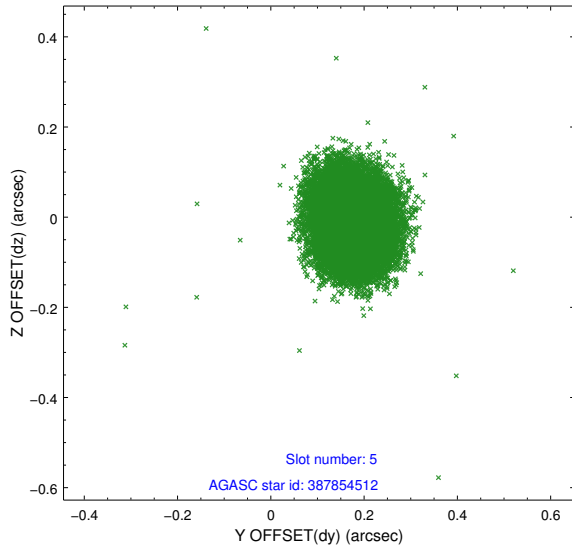
2.4.1 Slot 3



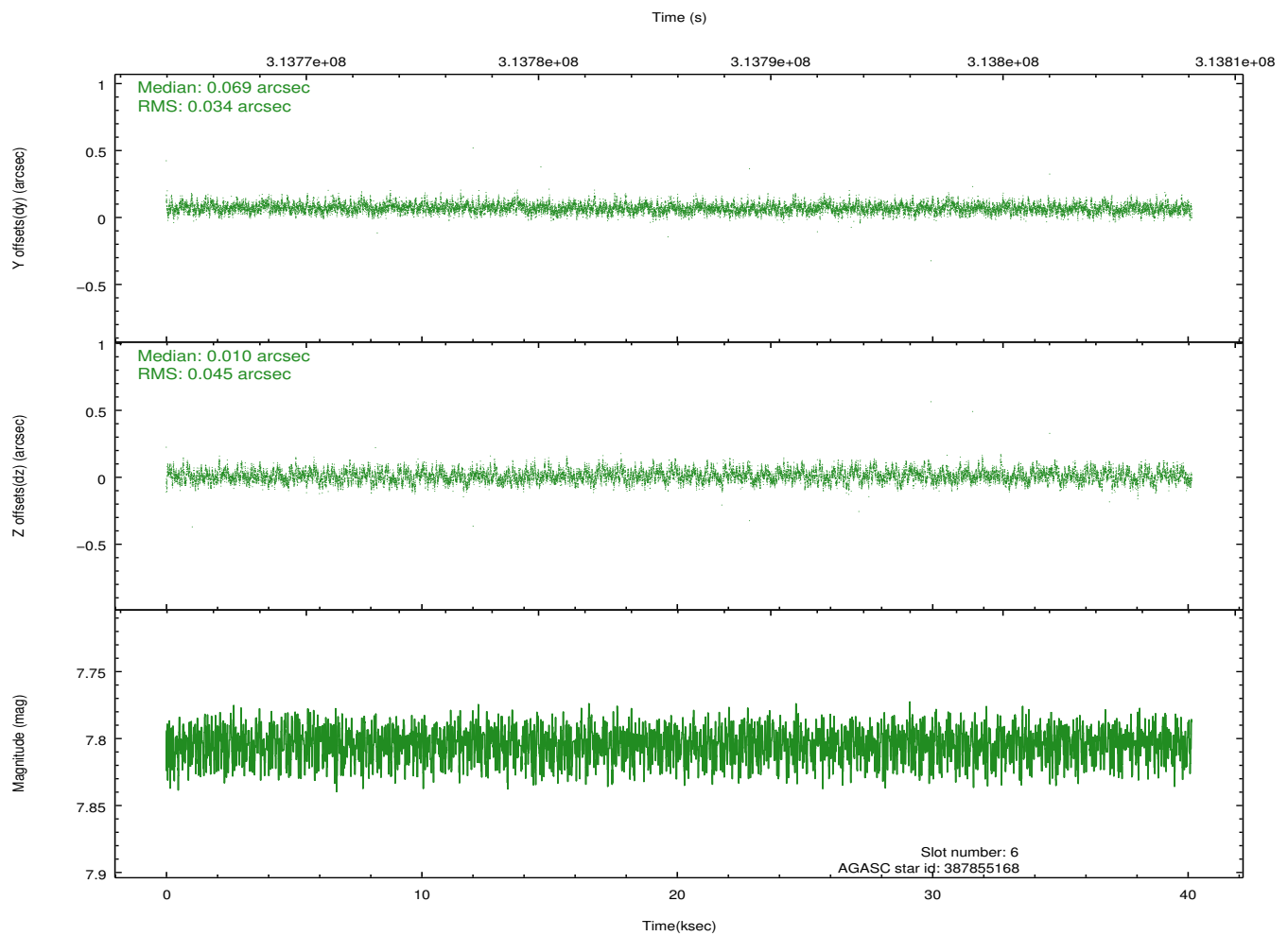
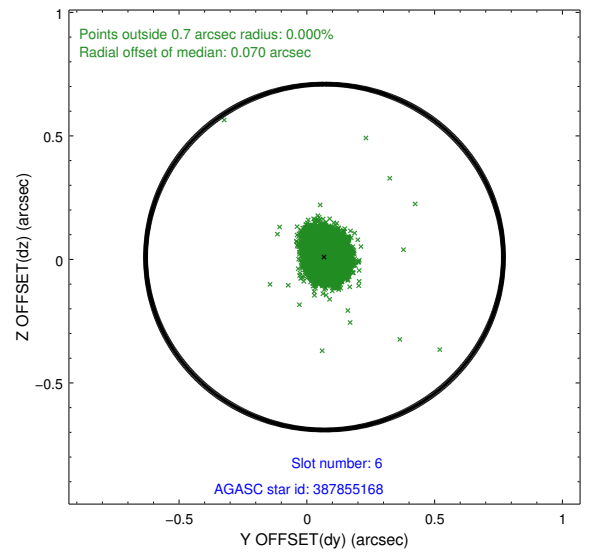
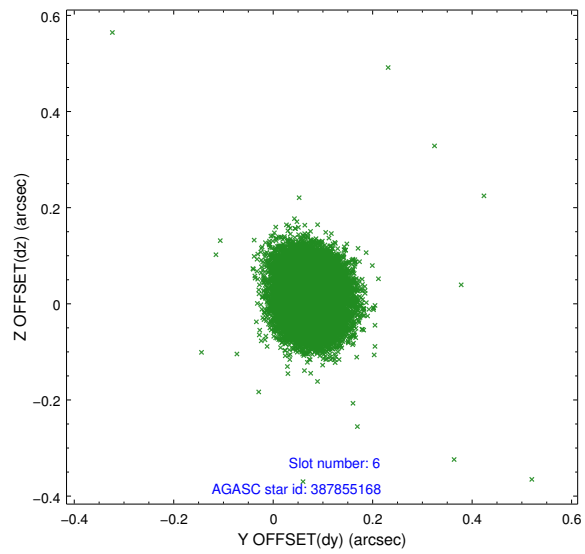
2.4.2 Slot 4



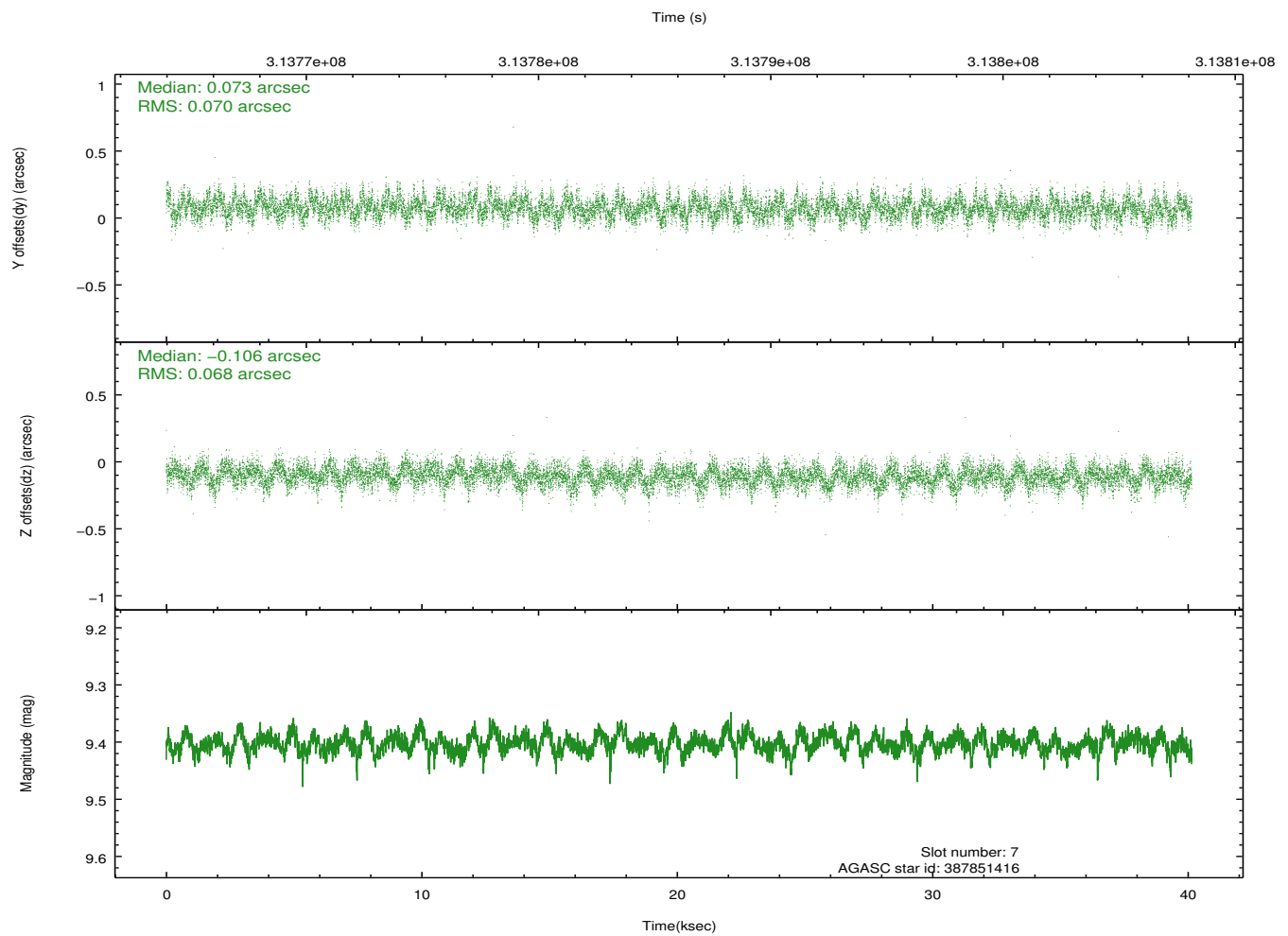
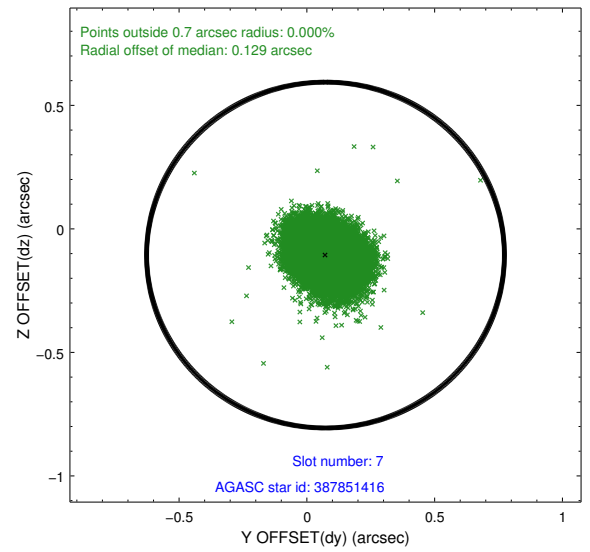
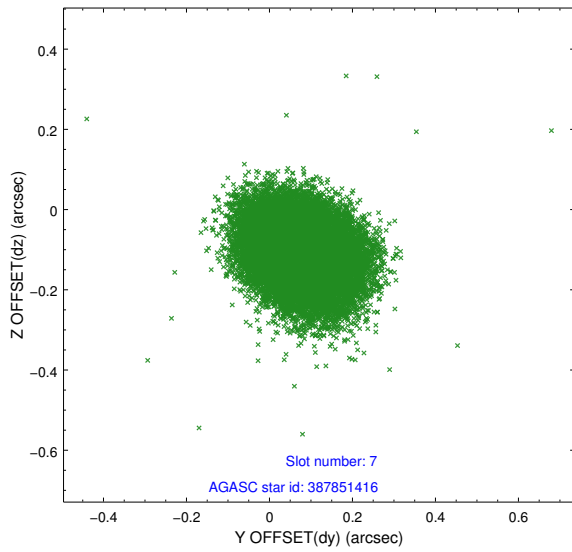
2.4.3 Slot 5



2.4.4 Slot 6

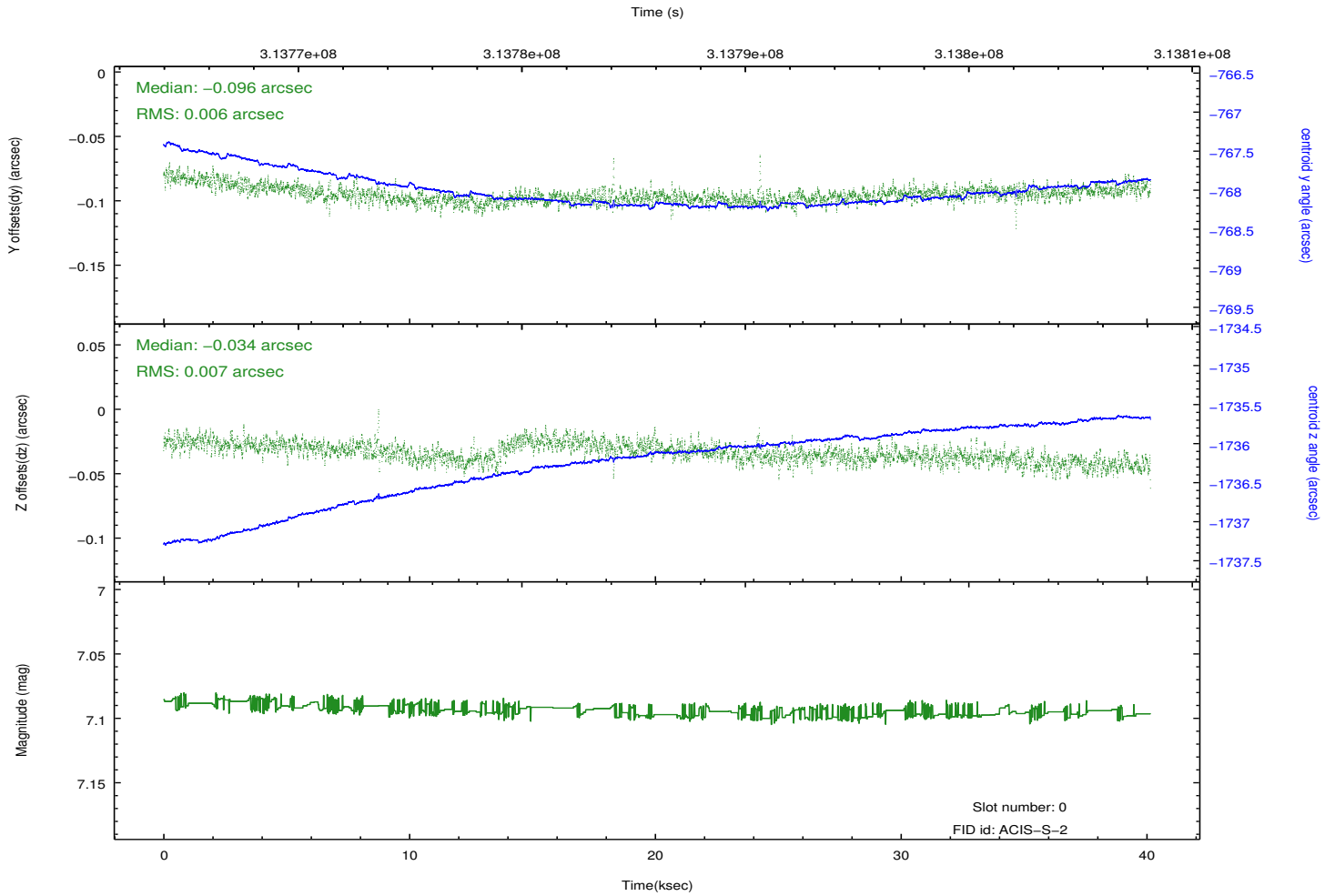
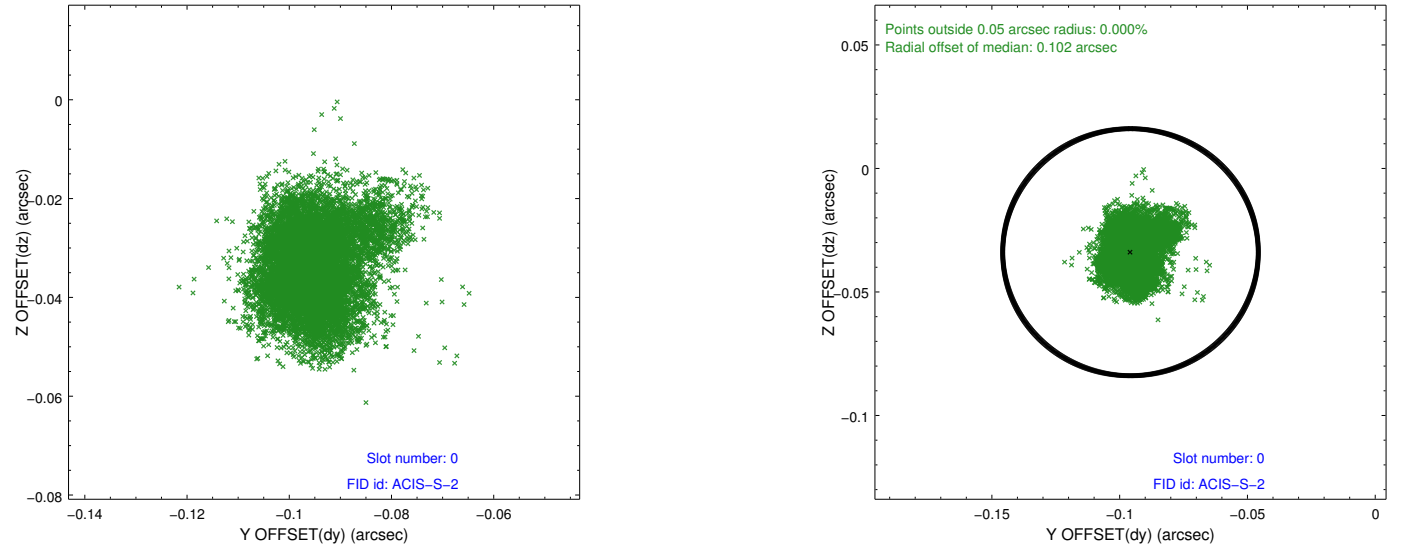


2.4.5 Slot 7

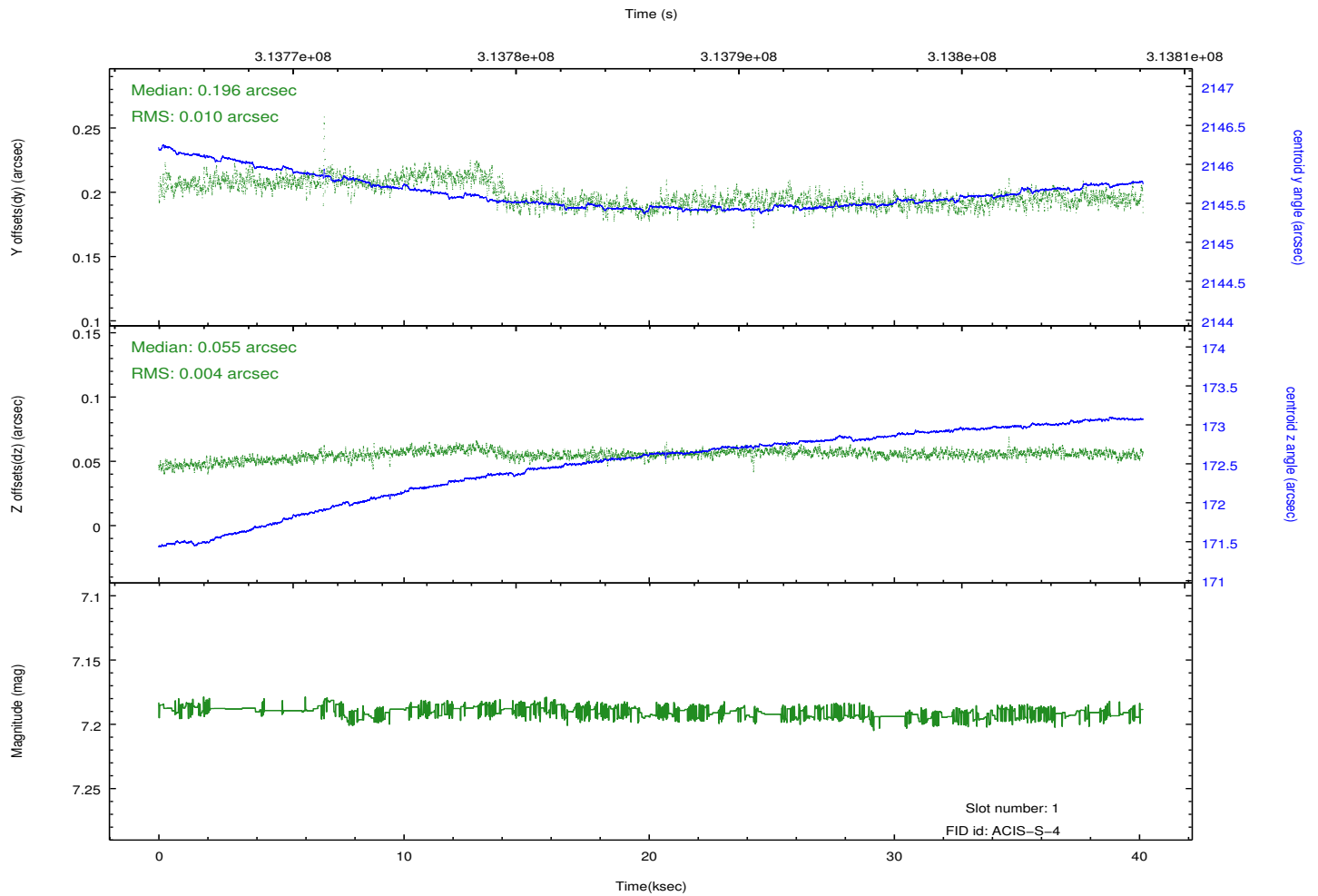
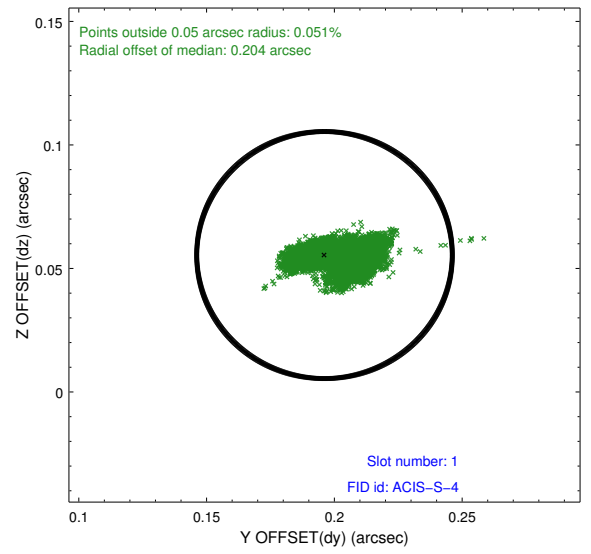
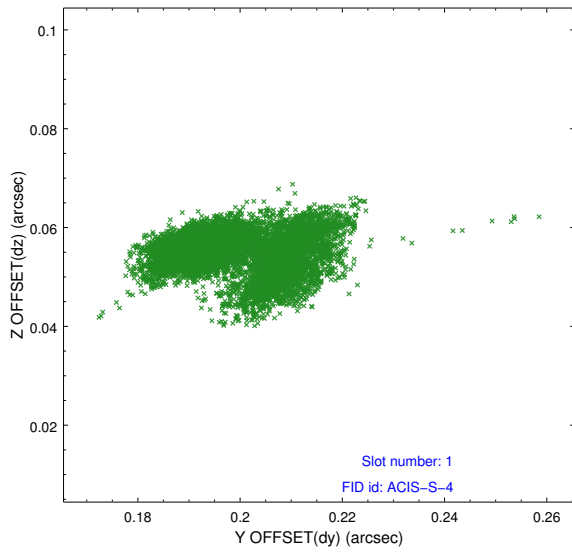


2.5 FID Slots

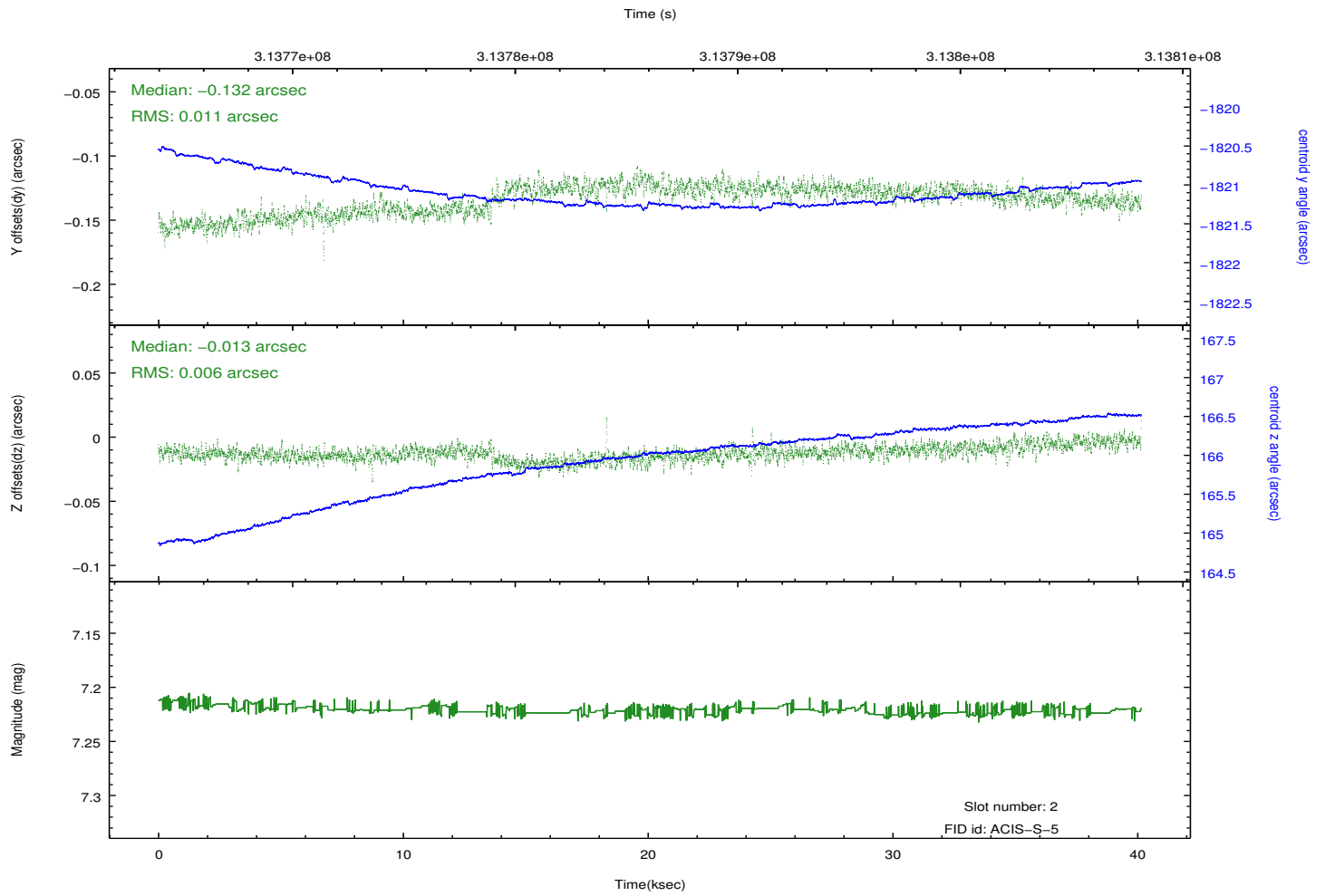
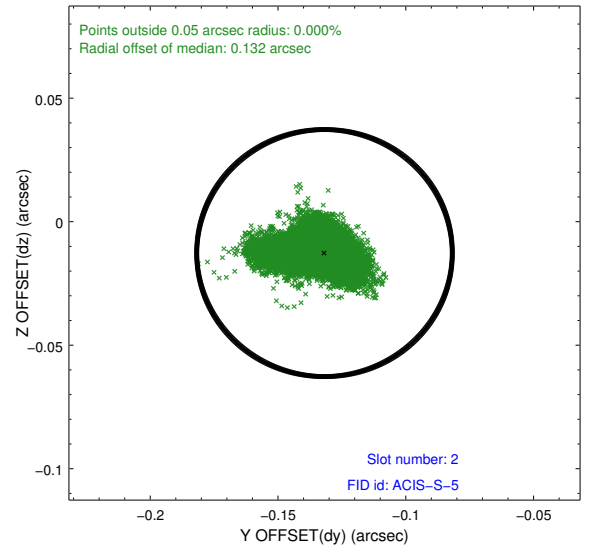
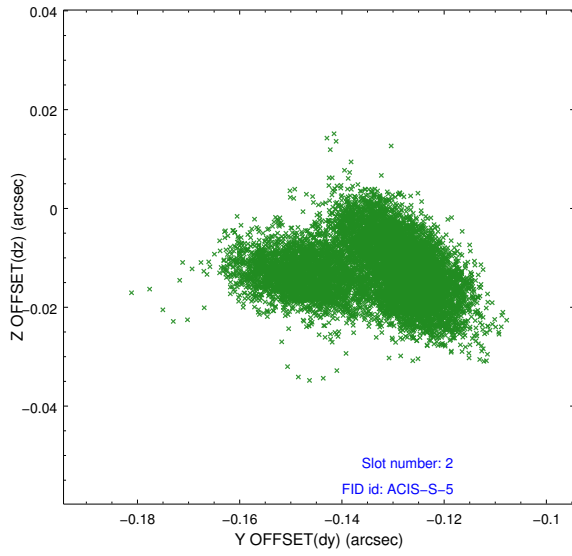
2.5.1 Slot 0



2.5.2 Slot 1



2.5.3 Slot 2



A Summary

A.1 Status

V&V Scientist	Beth Sundheim
V&V Date (YYYY-MM-DD)	2012.05.08
V&V Edition	1
V&V Disposition and Status	OK
V&V Charge Time	40.1481003

A.2 Comments