

# V&V Reference Report

## L2 ASCDS Version : 8.4.5

Observation 9418 - L2 Version 2  
Chandra X-Ray Center

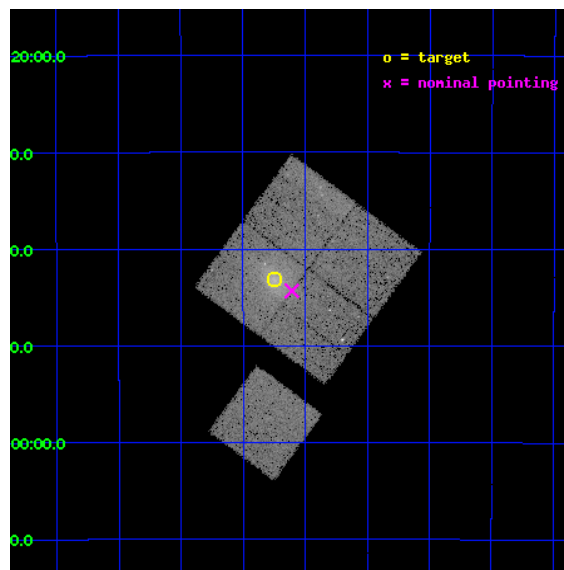
L2 Processing Date : Jun 6 2012

## Contents

<b>1</b>	<b>Front</b>	<b>2</b>
<b>2</b>	<b>OBI</b>	<b>3</b>
2.1	OBI . . . . .	3
2.1.1	Images . . . . .	3
2.1.2	Bias . . . . .	3
2.1.3	Parameters . . . . .	4
2.1.4	Events . . . . .	4
2.2	Compared Parameters . . . . .	5
2.3	Aspect . . . . .	6
2.4	Star Slots . . . . .	9
2.4.1	Slot 3 . . . . .	9
2.4.2	Slot 4 . . . . .	10
2.4.3	Slot 5 . . . . .	11
2.4.4	Slot 6 . . . . .	12
2.4.5	Slot 7 . . . . .	13
2.5	FID Slots . . . . .	14
2.5.1	Slot 0 . . . . .	14
2.5.2	Slot 1 . . . . .	15
2.5.3	Slot 2 . . . . .	16
<b>A</b>	<b>Summary</b>	<b>17</b>
A.1	Status . . . . .	17
A.2	Comments . . . . .	17

# 1 Front

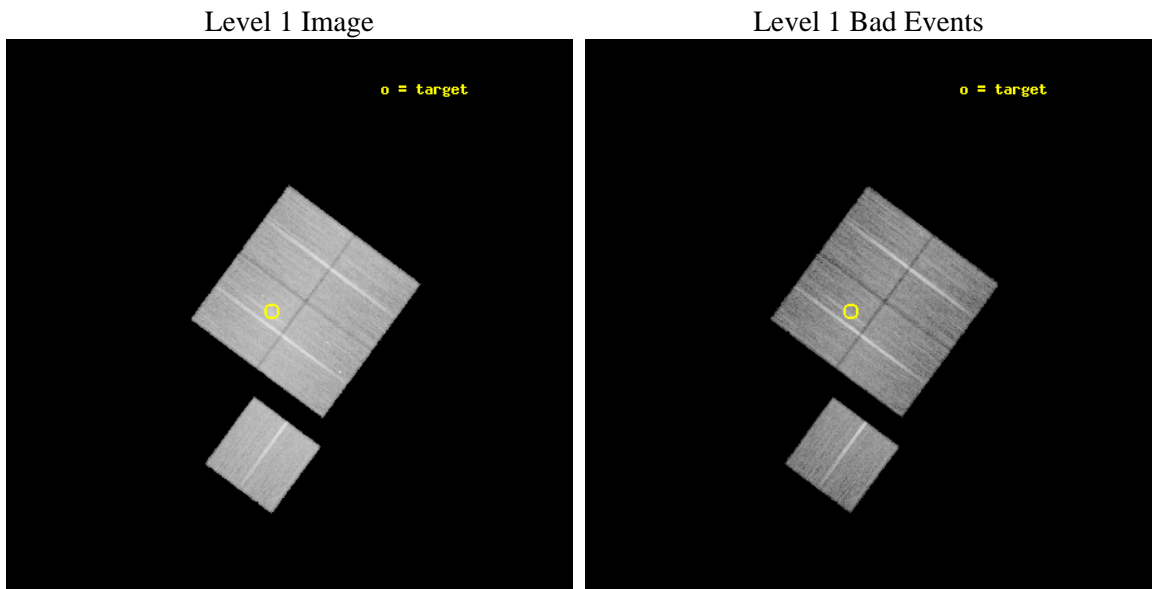
seq_num	800754	Sequence number
obs_id	9418	Observation id
title	LoCuSS: Cluster Mass Comparison with Chandra and HST -- Observational Discrepancy or Agreement in the New Millennium?	Proposal title
observer	Dr Graham Smith	Principal investigator
object	RXCJ0528.2-2942	Source name
dtcycle	0	&#160
cycle	P	events from which exps? Prim/Second/Both
ra_targ	82.063083	Observer's specified target RA [deg]
dec_targ	-29.71775	Observer's specified target Dec [deg]
ra_nom	82.026883313239	Nominal RA [deg]
dec_nom	-29.738677878594	Nominal Dec [deg]
roll_nom	216.50159650093	Nominal Roll [deg]
revision	2	Processing version of data
ontime	19767.508713424	Sum of GTIs [s]
livetime	19509.231659455	Livetime [s]
ontime0	19767.385493815	Sum of GTIs [s]
ontime1	19767.42666328	Sum of GTIs [s]
ontime2	19767.467643499	Sum of GTIs [s]
ontime3	19767.508713424	Sum of GTIs [s]
ontime6	19770.485543609	Sum of GTIs [s]
l2events	84191	Number of level 2 events



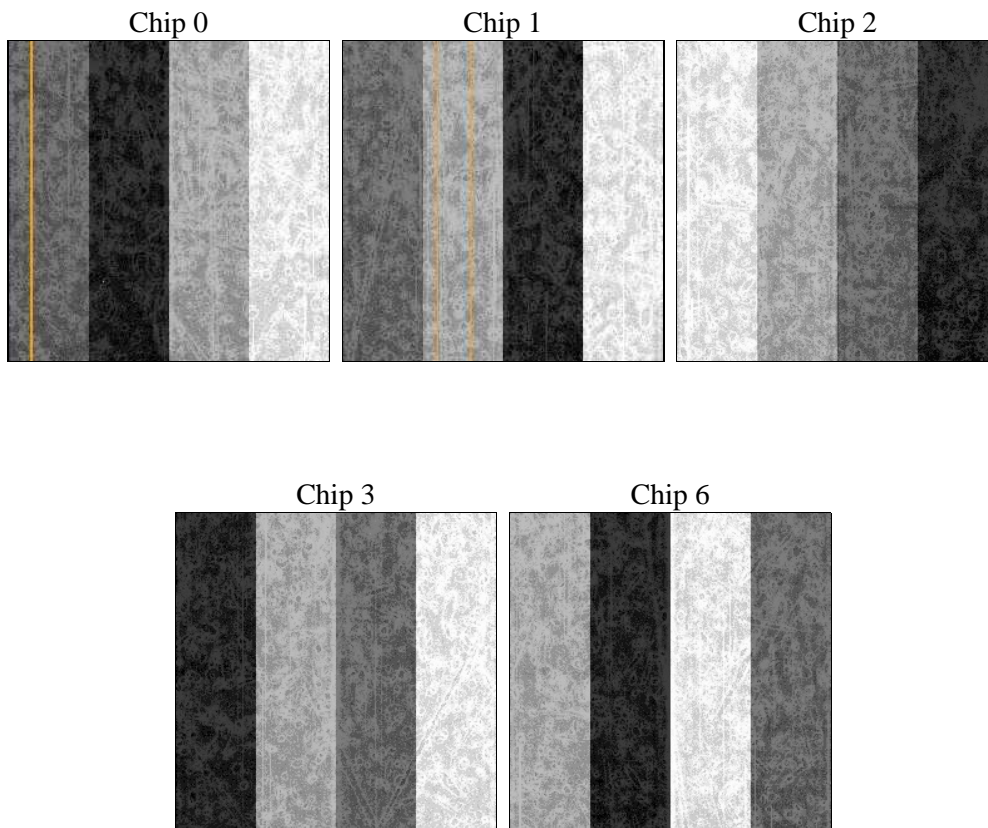
## 2 OBI

### 2.1 OBI

#### 2.1.1 Images



#### 2.1.2 Bias



### 2.1.3 Parameters

obi_num	0	Obi number	sched_exp_time	20000.000000	[s] Scheduled observation exposure time
ascdsver	8.4.5	Processing system revision	ontime	19767.508713424	Sum of GTIs [s]
caldbver	4.4.10	&#160	ontime0	19767.385493815	Sum of GTIs [s]
date	2012-06-07T01:16:25	Date and time of file creation	ontime1	19767.42666328	Sum of GTIs [s]
revision	2	Processing version of data	ontime2	19767.467643499	Sum of GTIs [s]
			ontime3	19767.508713424	Sum of GTIs [s]
			ontime6	19770.485543609	Sum of GTIs [s]
			l1events	865832	Number of level 1 events

### 2.1.4 Events

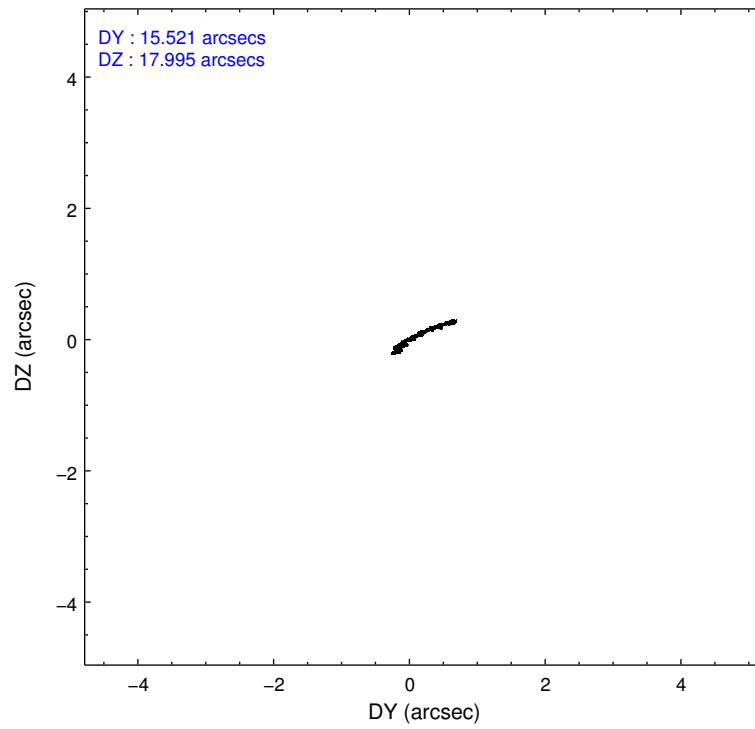
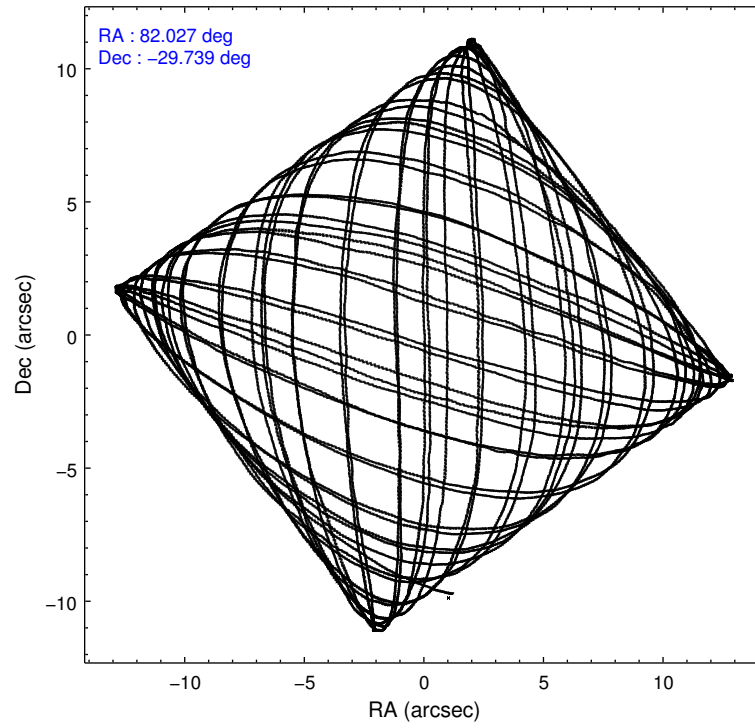
	ccd 0	ccd 1	ccd 2	ccd 3	ccd 6
level 1 events	160989	170366	181570	178596	174311
rejected events	143258	150176	162464	153764	156477
rejected %	88%	88%	89%	86%	89%

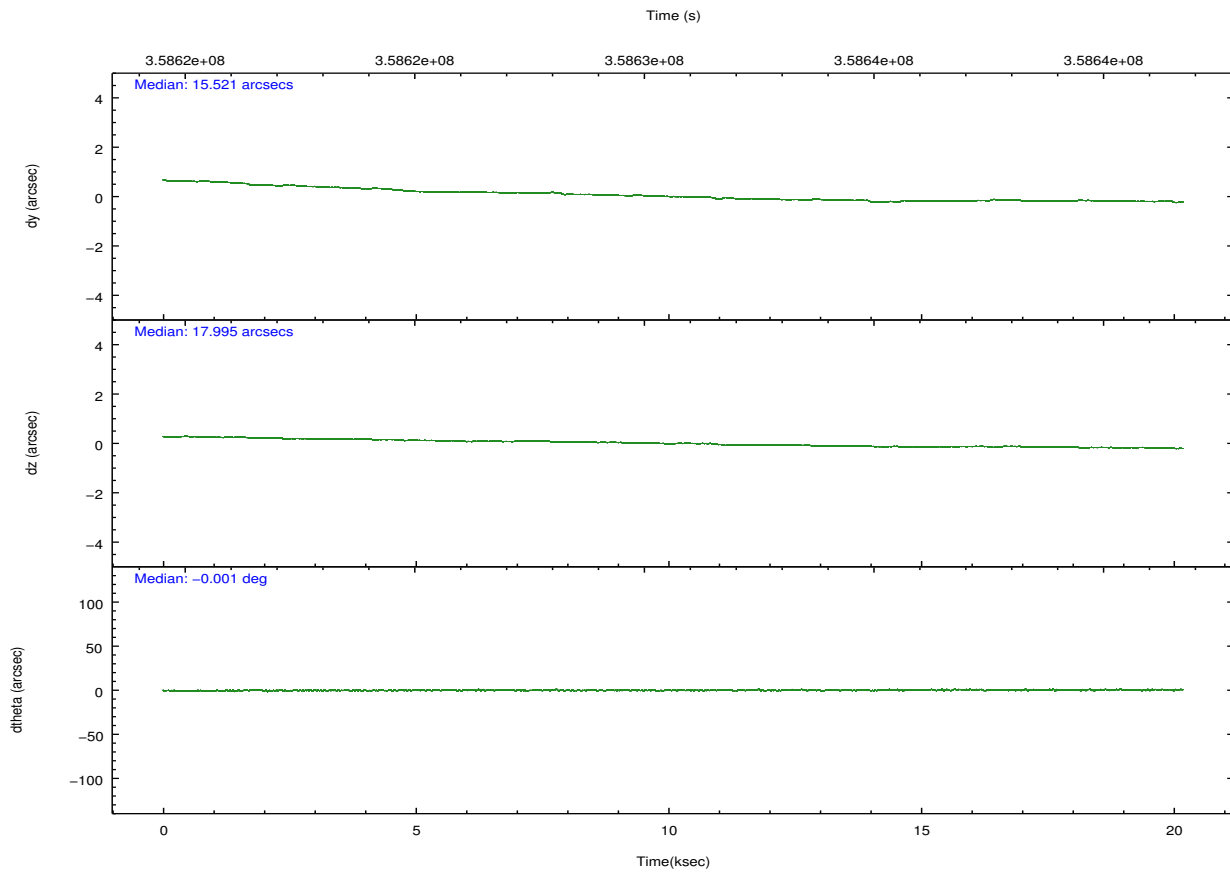
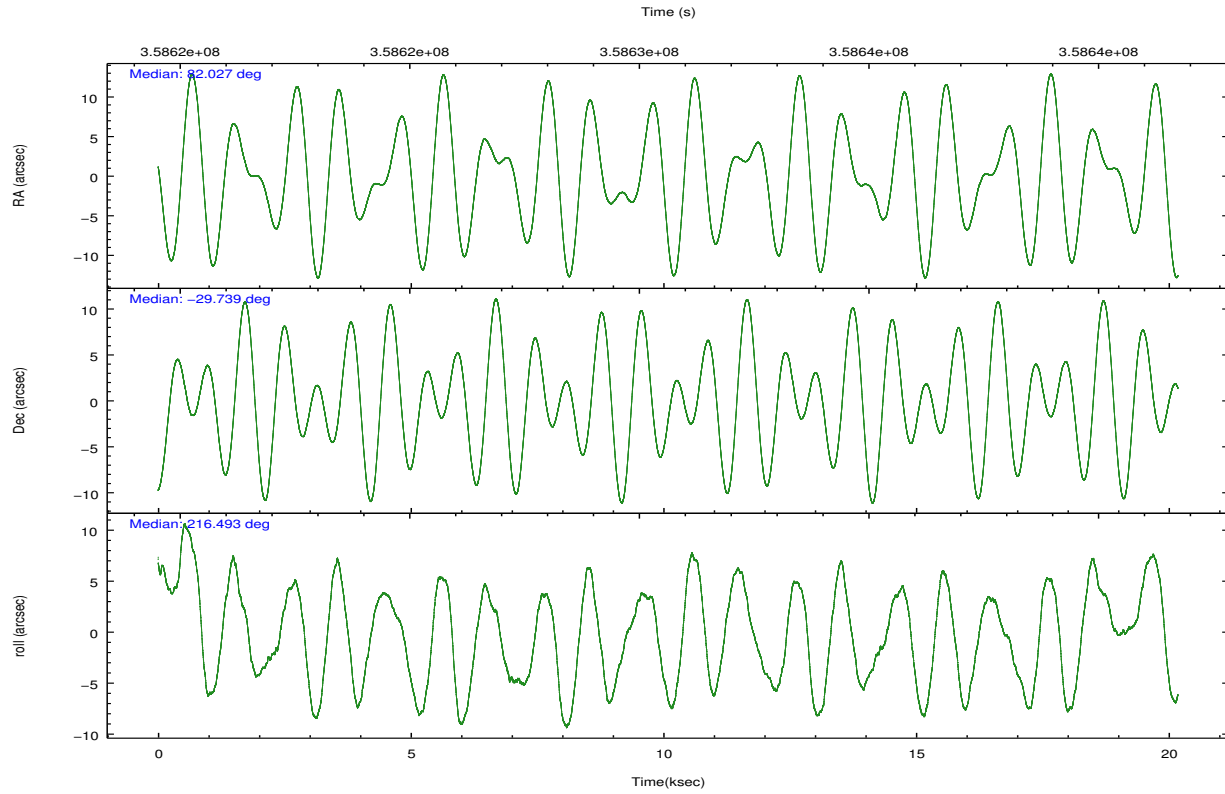
	ccd 0	ccd 1	ccd 2	ccd 3	ccd 6
grade 0 events	6185	7579	7574	12552	6142
	3%	4%	4%	7%	3%
grade 1 events	106	104	134	157	77
	0%	0%	0%	0%	0%
grade 2 events	4343	4470	4397	4545	3950
	2%	2%	2%	2%	2%
grade 3 events	1933	2081	1823	2118	1940
	1%	1%	1%	1%	1%
grade 4 events	1882	2085	1959	2032	1929
	1%	1%	1%	1%	1%
grade 5 events	6259	6871	5983	7186	6869
	3%	4%	3%	4%	3%
grade 6 events	3389	3984	3360	3590	3881
	2%	2%	1%	2%	2%
grade 7 events	136892	143192	156340	146416	149523
	85%	84%	86%	81%	85%

## 2.2 Compared Parameters

Parameter	Planned	Actual	Parameter	Planned	Actual
Instrument	ACIS	ACIS	Obspar format version number	7	7
Detector	ACIS-01236	ACIS-01236	Obspar file type	PREDICTED	ACTUAL
Grating	NONE	NONE	Obspar update status	NONE	UPDATED
Data mode	VFAINT	VFAINT	Number of optional ACIS chips dropped	0	0
Observation mode	POINTING	POINTING	On-chip summing requested	N	N
[deg] Pointing RA	82.039411	82.02688331323887	Subarray requested	NONE	NONE
[deg] Pointing Dec	-29.713414	-29.73867787859411	Alternating exposures requested	N	N
[deg] Pointing Roll	216.299127	216.5015965009329	[s] Primary exposure time	0.000000	3.1
[mm] SIM focus pos	-0.782348	-0.7809083437167272			
[mm] SIM defocus	0	0.001439871863259334			
[mm] SIM translation stage pos	-227.592463	-227.5958210972112			
[mm] SIM translation stage offset	-6	-5.996631905718488			
[s] Observation start time (MET)	358620715.184000	358620007.96701			
Observation start date	2009-05-13T16:50:49	2009-05-13T16:40:07			
[s] Observation end time (MET)	358640715.184000	358641791.26809			
Observation end date	2009-05-13T22:24:09	2009-05-13T22:43:11			
Read mode	TIMED	TIMED			

## 2.3 Aspect



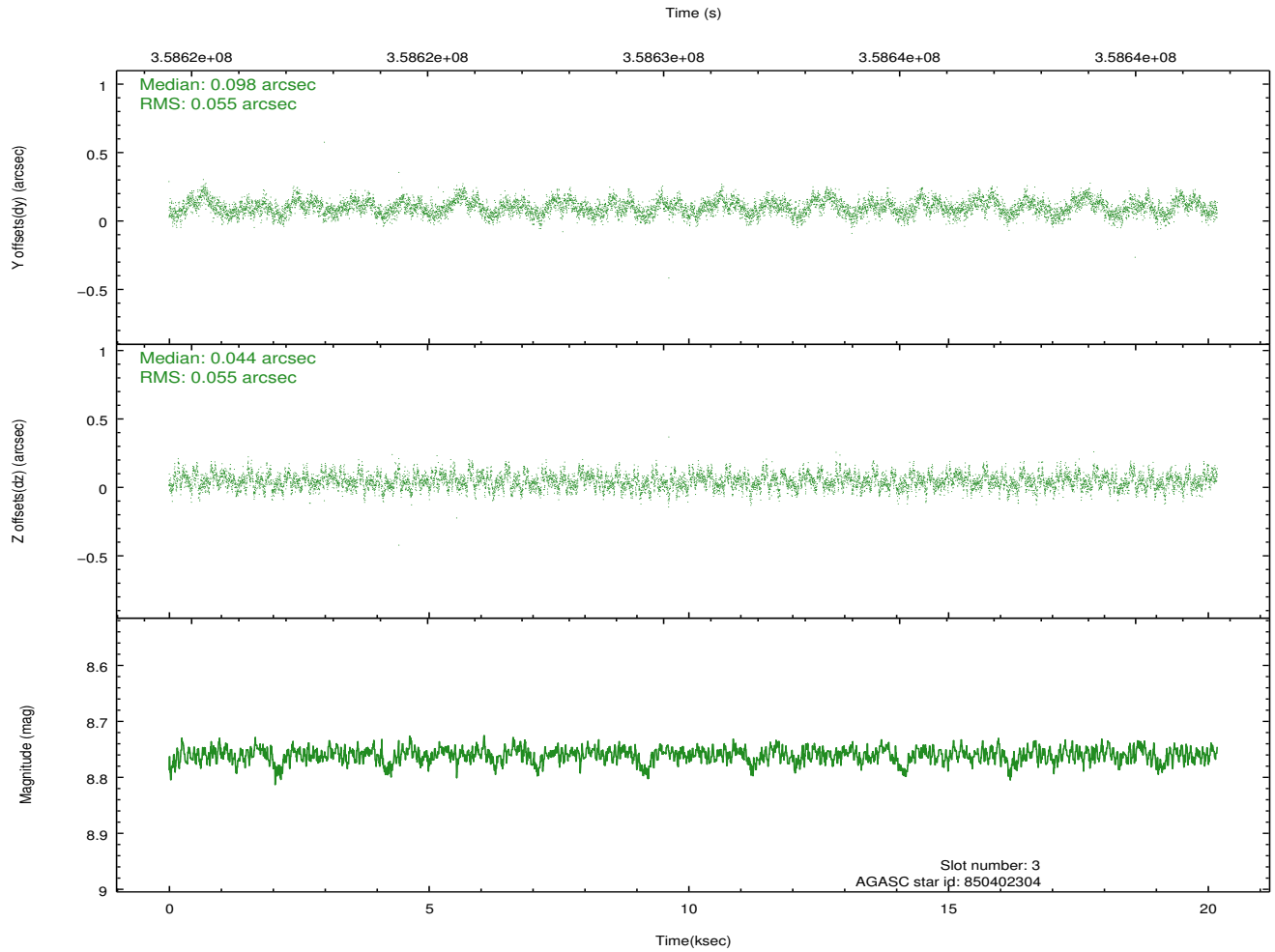
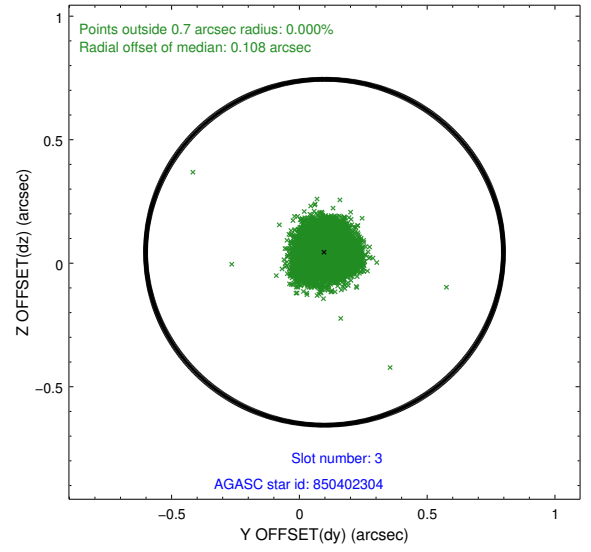
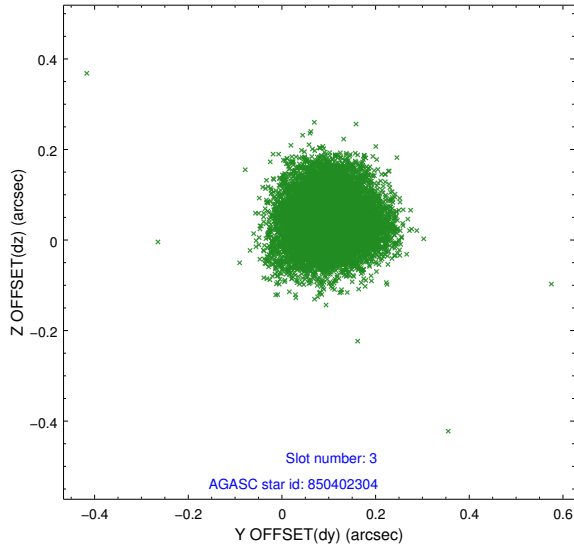


### Slot Statistics

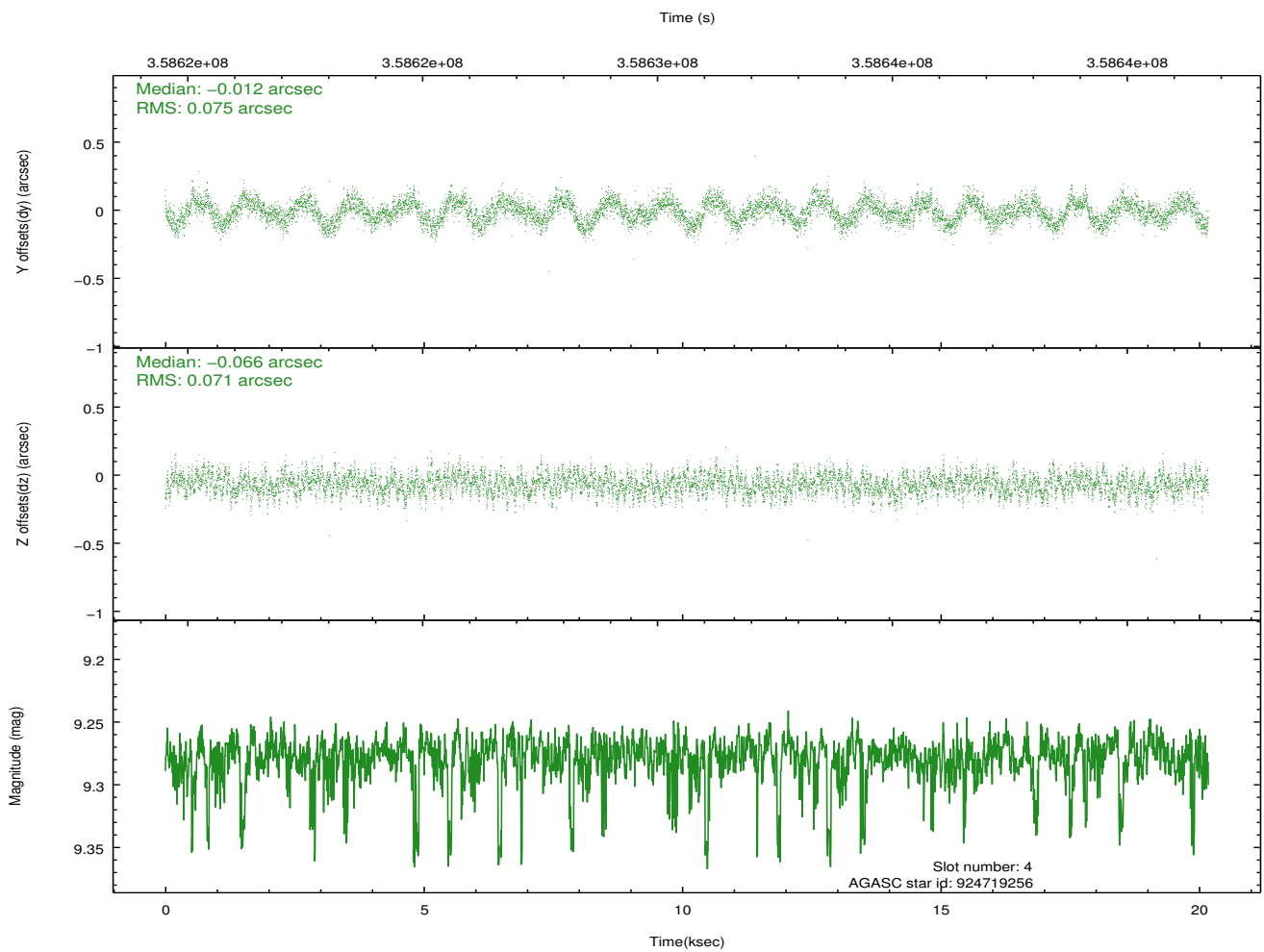
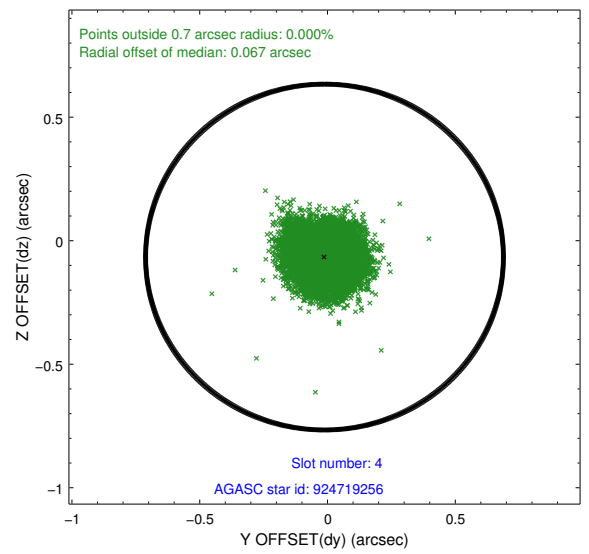
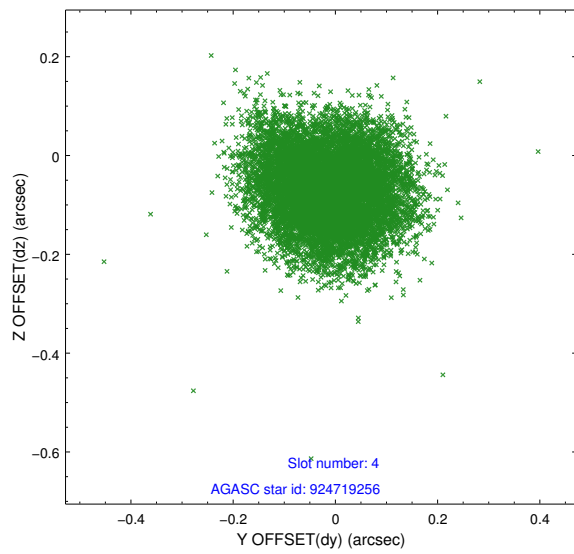
slot	status	id	mag	n_pts	med_dy	med_dz	dr1	dr2	ra	dec	mean_y	mean_z
0	FID	ACIS-I-1	7.02	4920	0.119	-0.065	0.006	0.011	0.000000	0.000000	923.84	-964.84
1	FID	ACIS-I-5	6.99	4923	-0.262	0.107	0.007	0.013	0.000000	0.000000	-1824.51	932.74
2	FID	ACIS-I-6	7.01	4922	0.052	0.029	0.007	0.012	0.000000	0.000000	389.16	1577.35
3	GUIDE	850402304	8.76	9840	0.098	0.044	0.084	0.133	81.966480	-29.574122	-112.41	-538.97
4	GUIDE	924719256	9.28	9813	-0.012	-0.066	0.110	0.172	82.047786	-30.026761	646.94	924.80
5	GUIDE	850272800	9.27	9765	-0.003	0.083	0.098	0.158	81.491700	-29.999829	1989.52	-175.91
6	GUIDE	850400944	8.98	9840	0.005	-0.034	0.087	0.143	82.103208	-29.360380	-912.99	-905.70
7	GUIDE	850270464	9.70	9829	-0.080	-0.024	0.188	0.276	81.496223	-29.278437	450.29	-2268.39

## 2.4 Star Slots

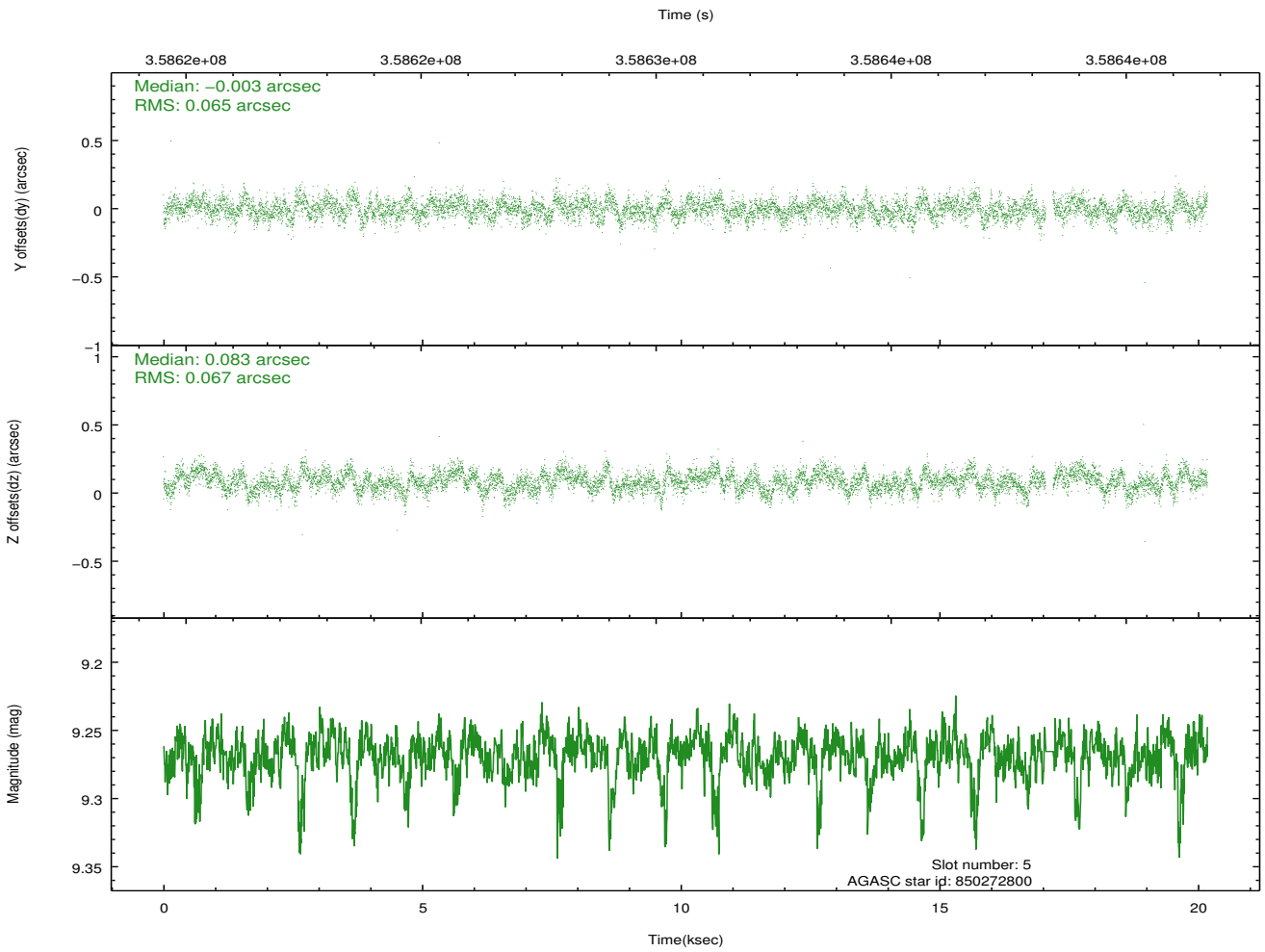
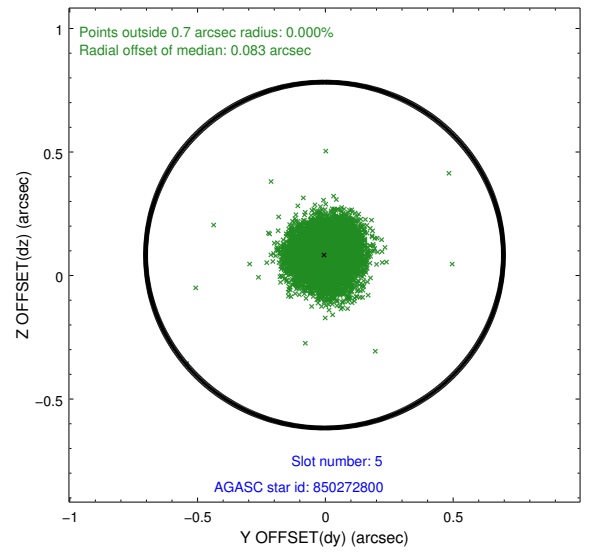
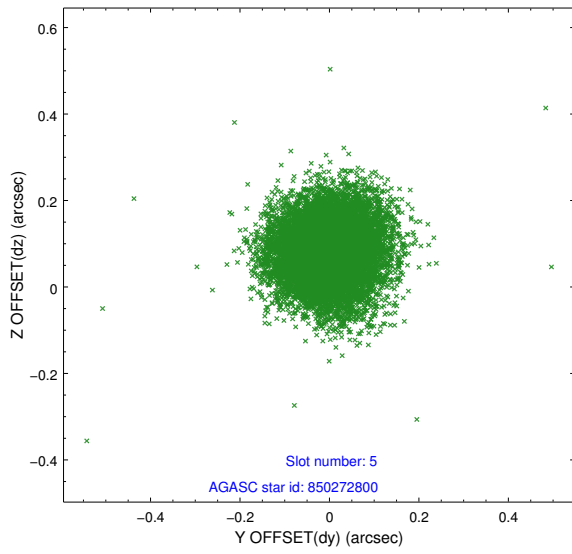
### 2.4.1 Slot 3



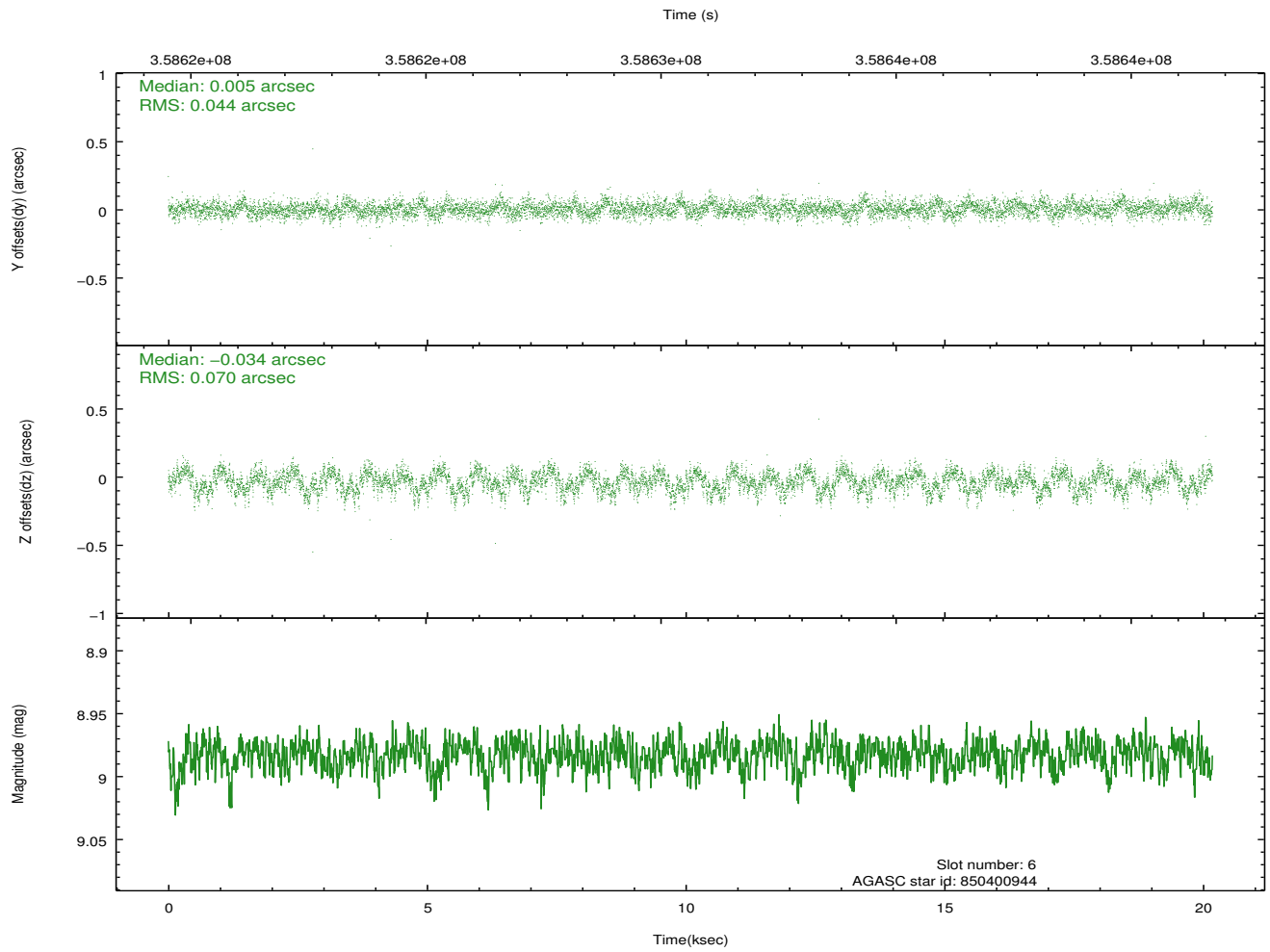
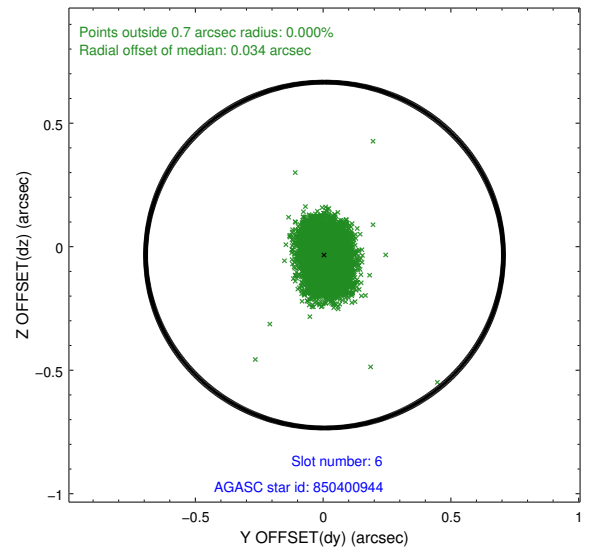
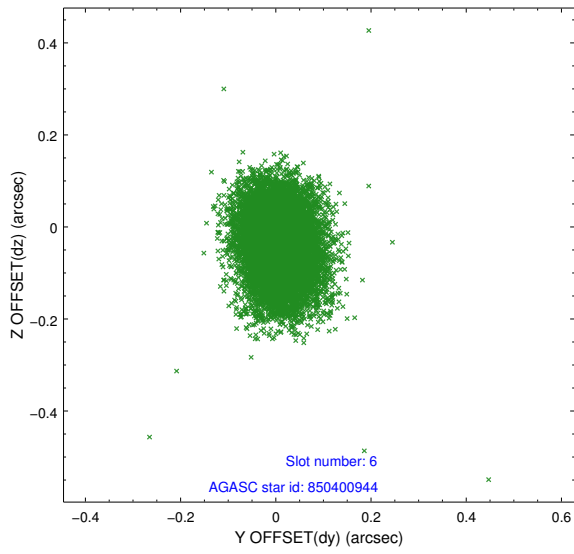
## 2.4.2 Slot 4



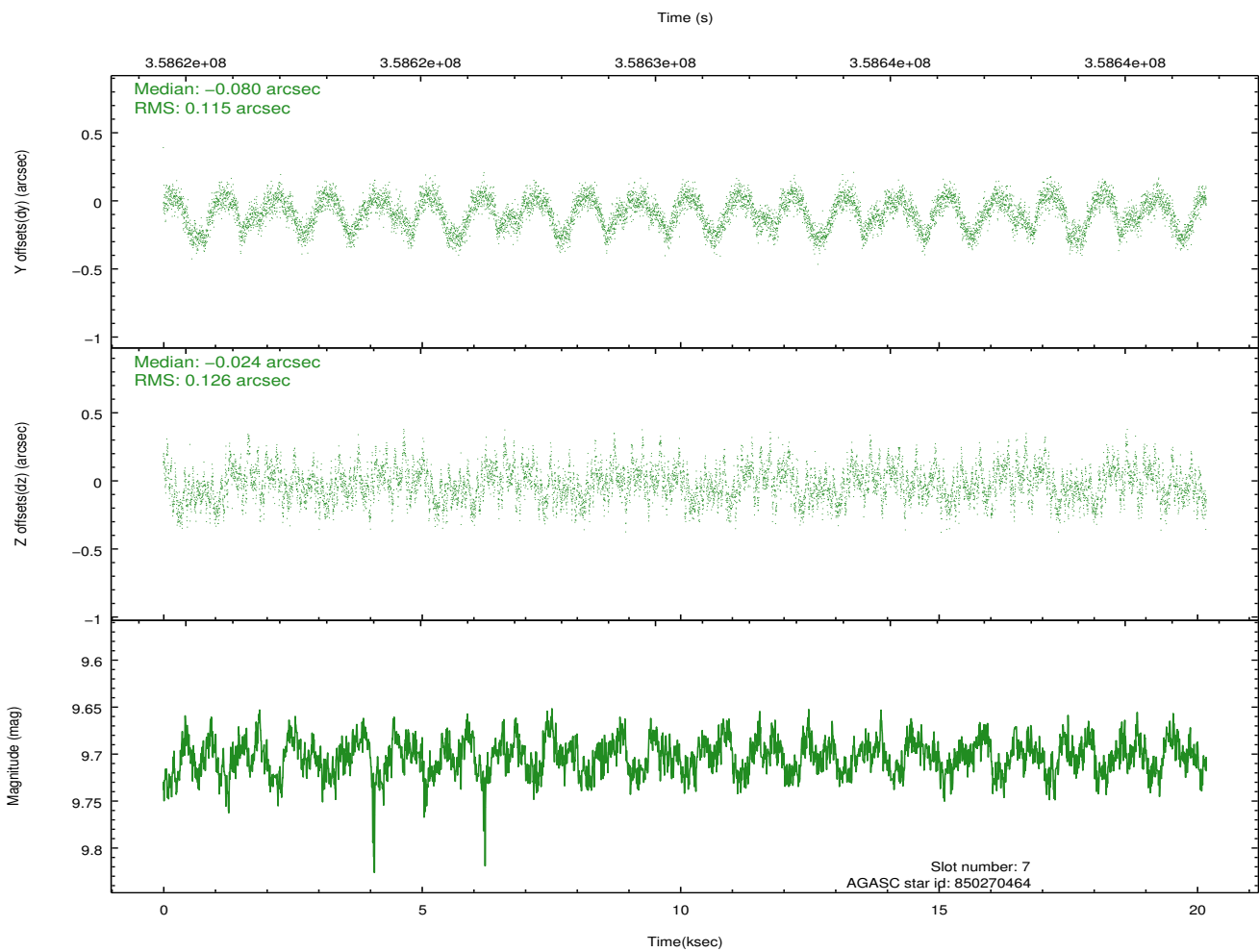
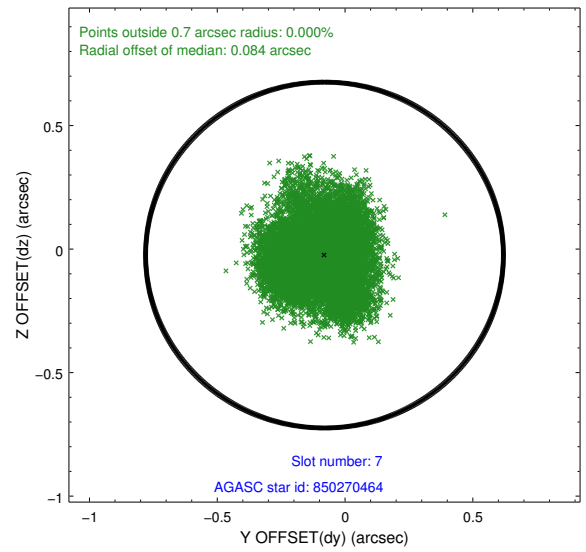
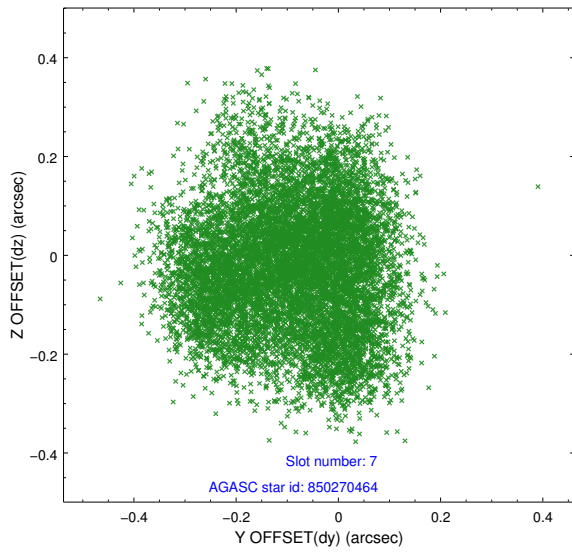
### 2.4.3 Slot 5



### 2.4.4 Slot 6

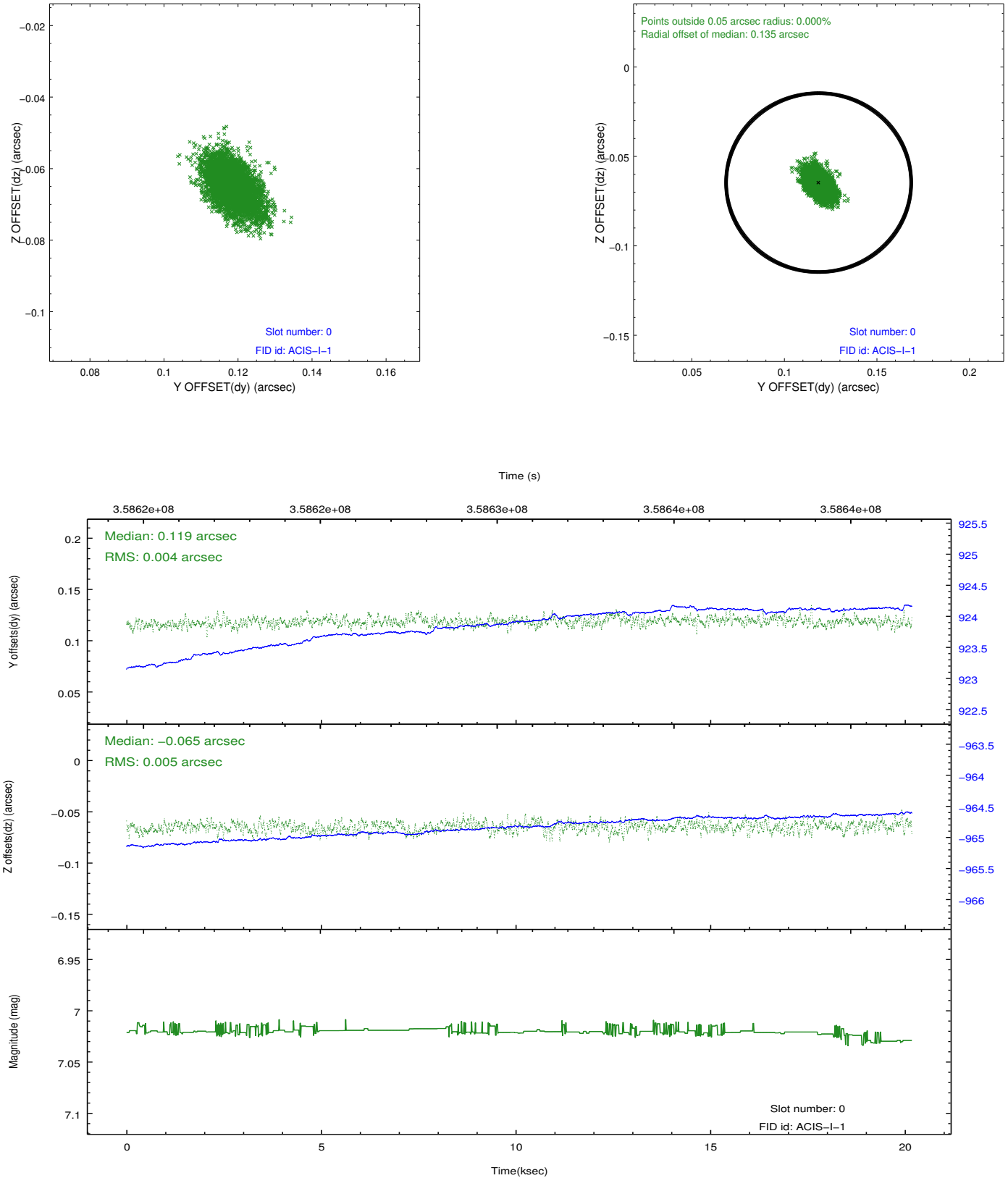


## 2.4.5 Slot 7

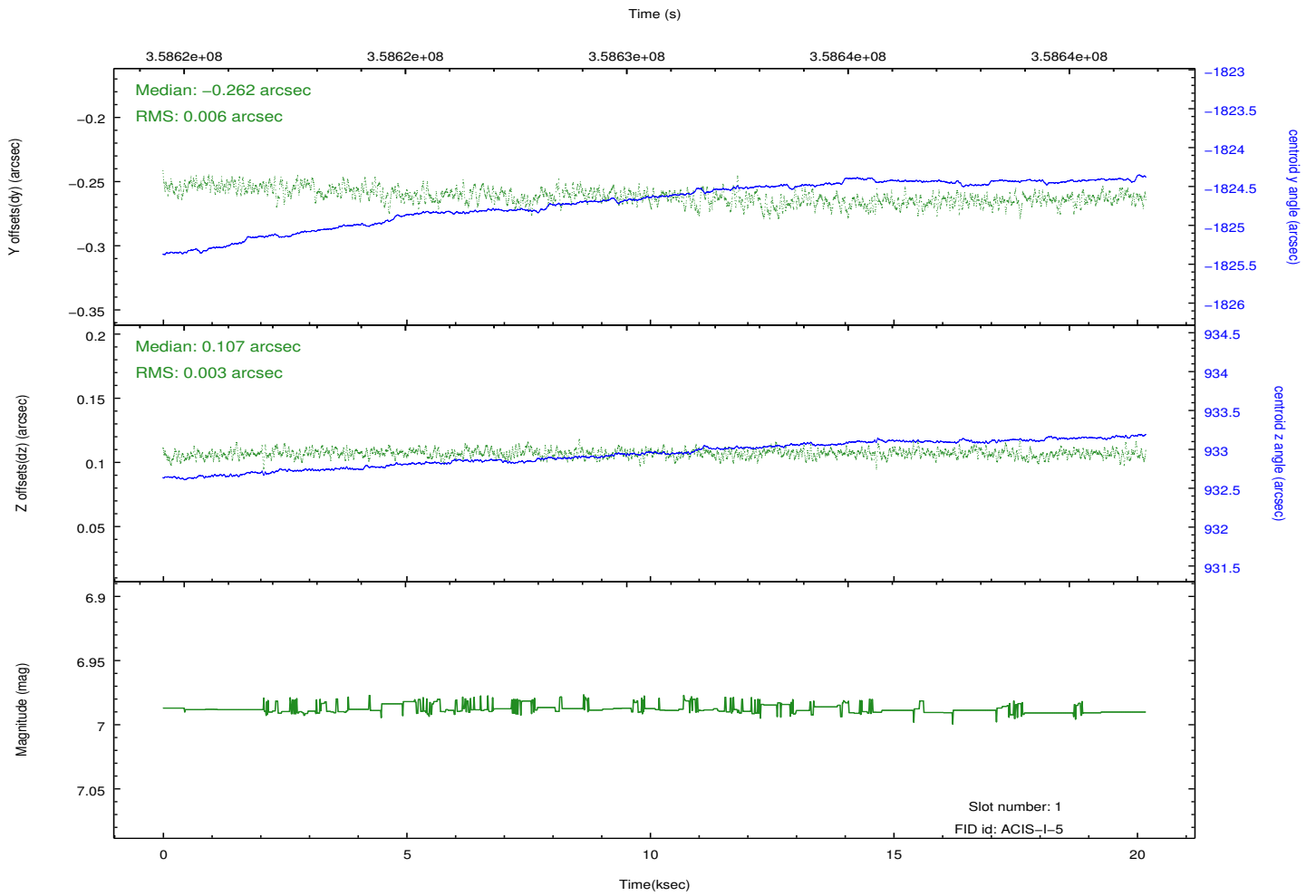
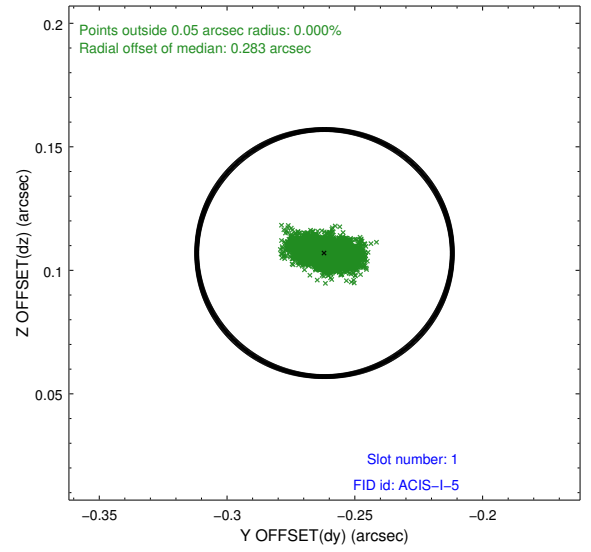
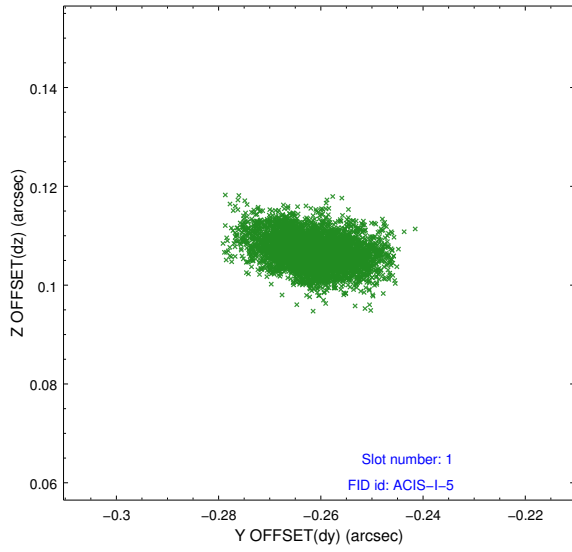


## 2.5 FID Slots

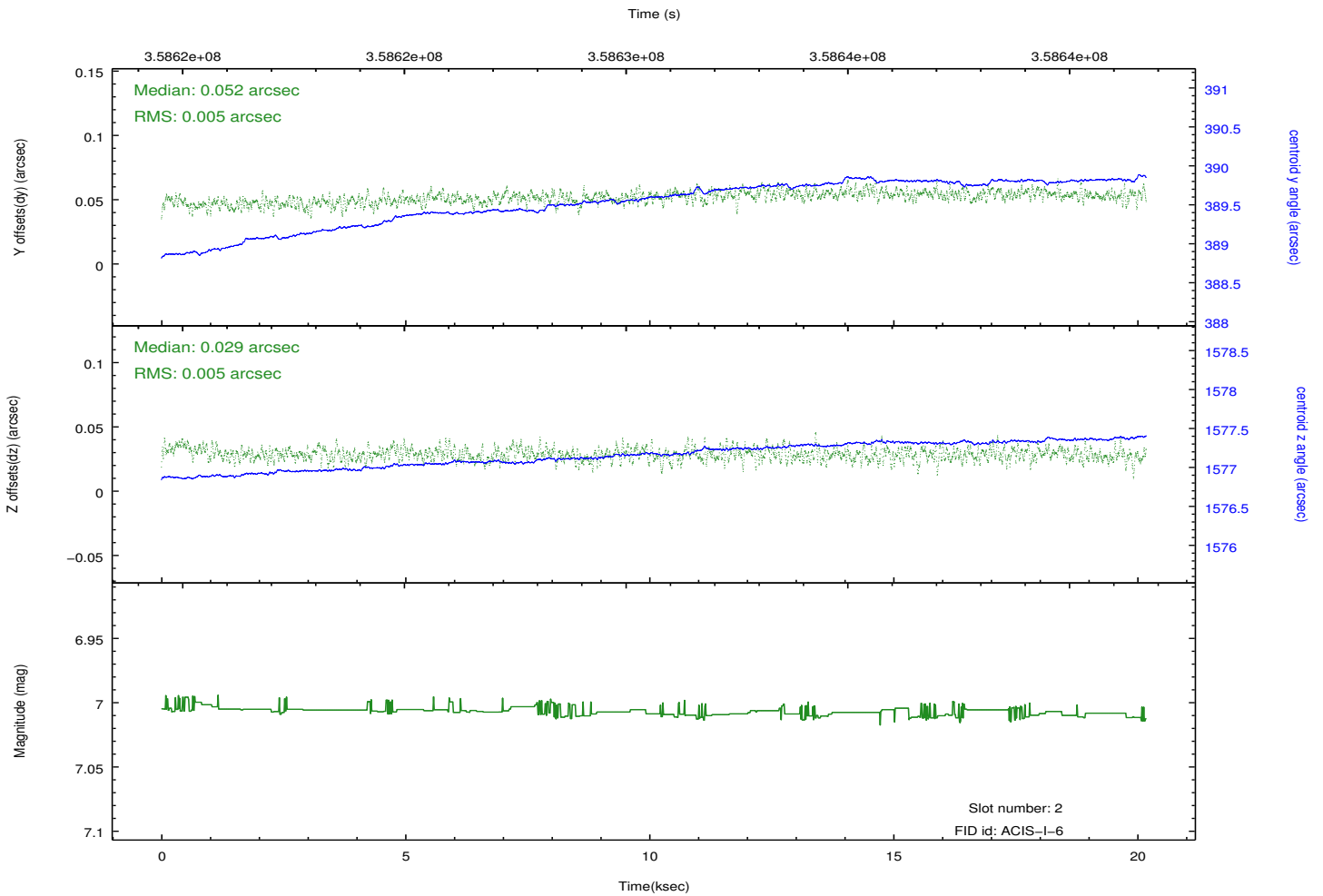
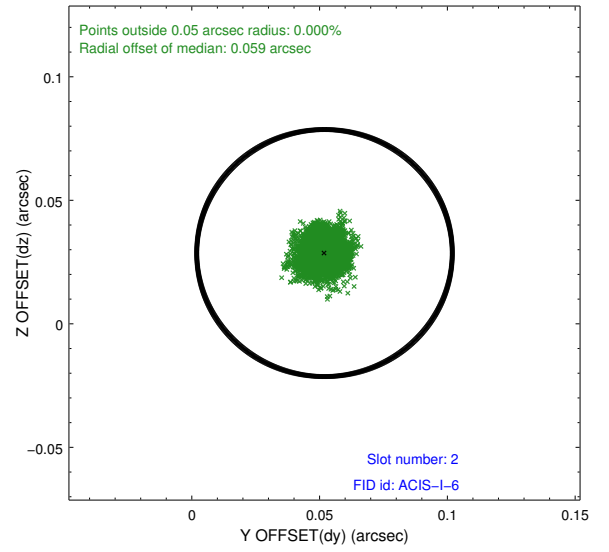
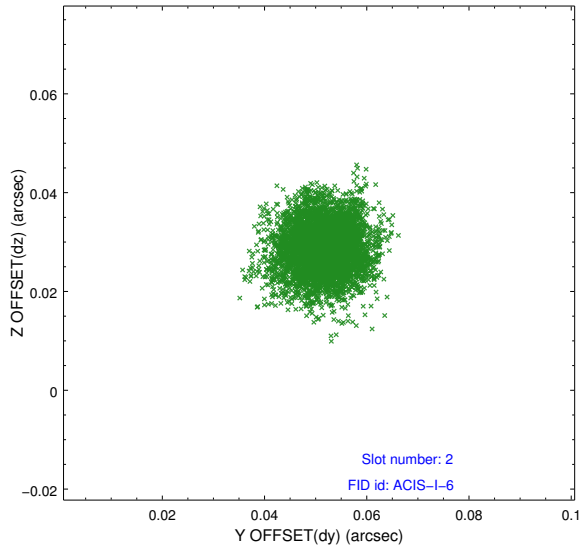
### 2.5.1 Slot 0



## 2.5.2 Slot 1



### 2.5.3 Slot 2



# A Summary

## A.1 Status

V&V Scientist	Beth Sundheim
V&V Date (YYYY-MM-DD)	2012.06.11
V&V Edition	1
V&V Disposition and Status	OK
V&V Charge Time	19.7686591

## A.2 Comments