

V&V Reference Report

L2 ASCDS Version : 8.4.4

Observation 9428 - L2 Version 2
Chandra X-Ray Center

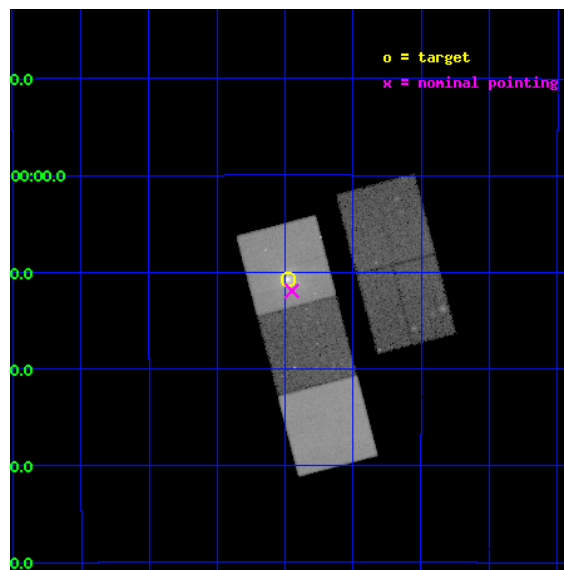
L2 Processing Date : May 16 2012

Contents

1	Front	2
2	OBI	3
2.1	OBI	3
2.1.1	Images	3
2.1.2	Bias	3
2.1.3	Parameters	4
2.1.4	Events	4
2.2	Compared Parameters	5
2.3	Aspect	6
2.4	Star Slots	9
2.4.1	Slot 3	9
2.4.2	Slot 4	10
2.4.3	Slot 5	11
2.4.4	Slot 6	12
2.4.5	Slot 7	13
2.5	FID Slots	14
2.5.1	Slot 0	14
2.5.2	Slot 1	15
2.5.3	Slot 2	16
A	Summary	17
A.1	Status	17
A.2	Comments	17

1 Front

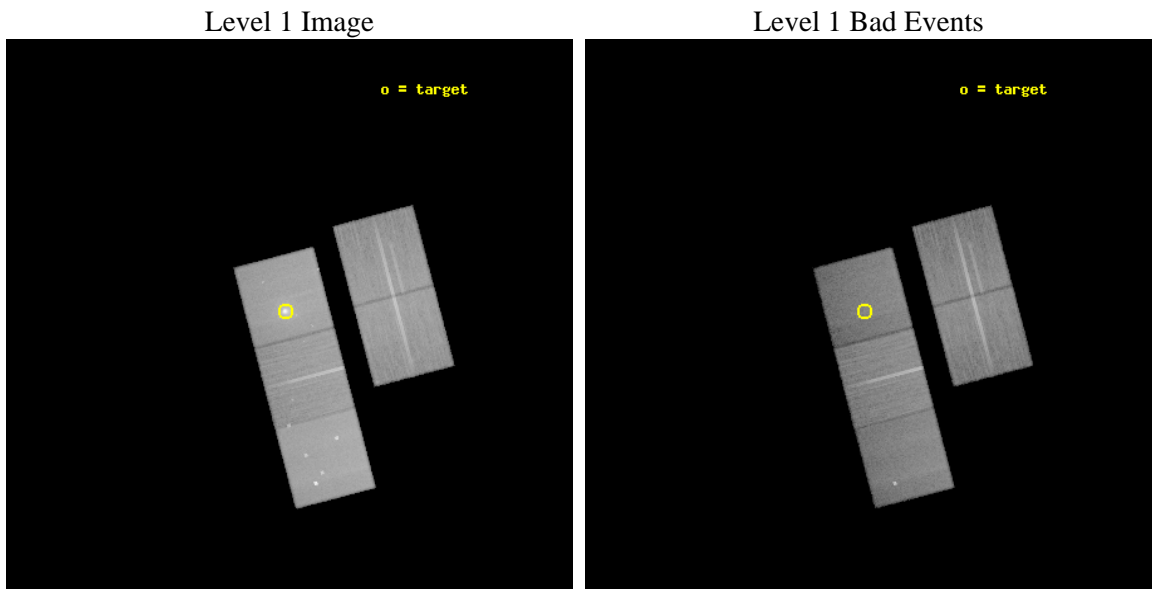
seq_num	800764	Sequence number
obs_id	9428	Observation id
title	The Link between optical nebulae and feedback in cluster cores	Pro
observer	Dr RODERICK JOHNSTONE	Principal investigator
object	RXCJ1459.4-1811	Source name
dtcycle	0	
cycle	P	events from which exps? Prim/Second/Both
ra_targ	224.869708	Observer's specified target RA [deg]
dec_targ	-18.179447	Observer's specified target Dec [deg]
ra_nom	224.86244607678	Nominal RA [deg]
dec_nom	-18.199110288704	Nominal Dec [deg]
roll_nom	255.27743413852	Nominal Roll [deg]
revision	2	Processing version of data
ontime	40160.500308871	Sum of GTIs [s]
livetime	39635.773806606	Livetime [s]
ontime2	40151.077347815	Sum of GTIs [s]
ontime3	40154.218338311	Sum of GTIs [s]
ontime5	40160.500308871	Sum of GTIs [s]
ontime6	40160.500308871	Sum of GTIs [s]
ontime7	40160.500308871	Sum of GTIs [s]
l2events	498751	Number of level 2 events



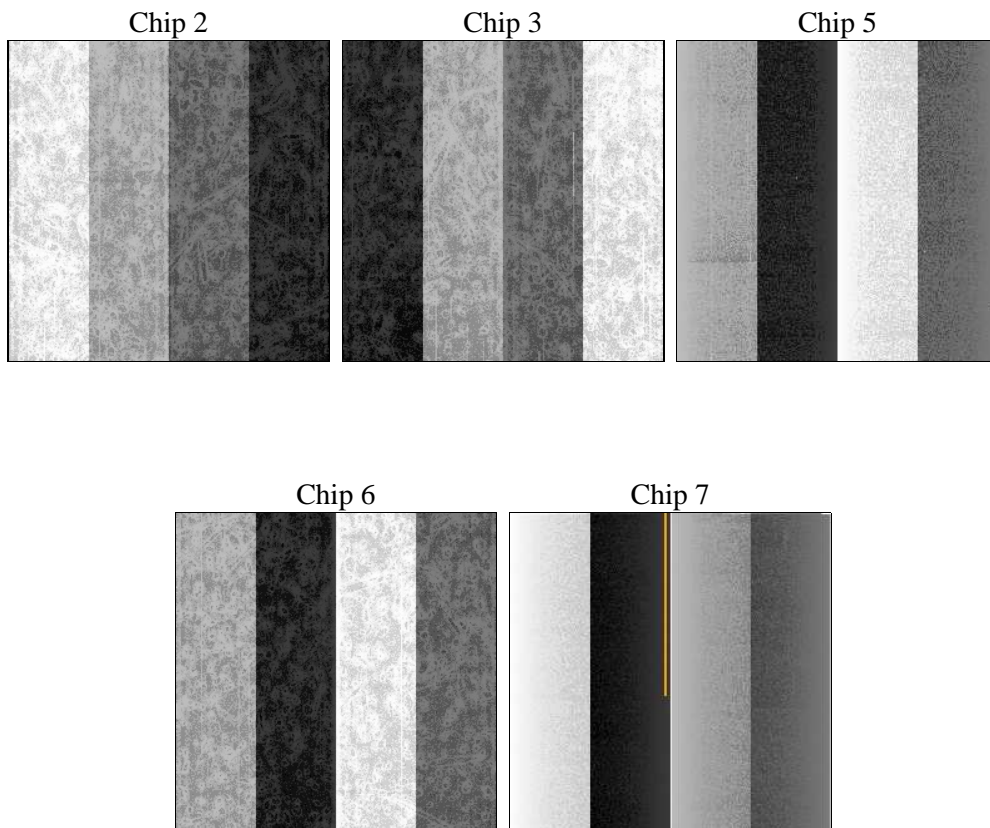
2 OBI

2.1 OBI

2.1.1 Images



2.1.2 Bias



2.1.3 Parameters

obi_num	0	Obi number	sched_exp_time	40000.000000	[s] Scheduled observation exposure time
ascdsver	8.4.4	Processing system revision	ontime	40160.500308871	Sum of GTIs [s]
caldbver	4.4.9	 	ontime2	40151.077347815	Sum of GTIs [s]
date	2012-05-16T15:51:16	Date and time of file creation	ontime3	40154.218338311	Sum of GTIs [s]
revision	2	Processing version of data	ontime5	40160.500308871	Sum of GTIs [s]
			ontime6	40160.500308871	Sum of GTIs [s]
			ontime7	40160.500308871	Sum of GTIs [s]
			l1events	1806697	Number of level 1 events

2.1.4 Events

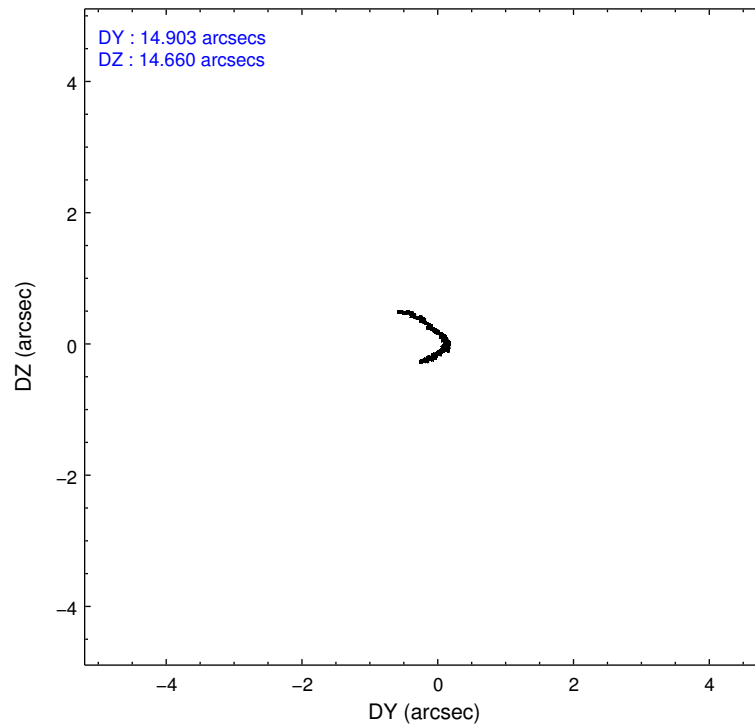
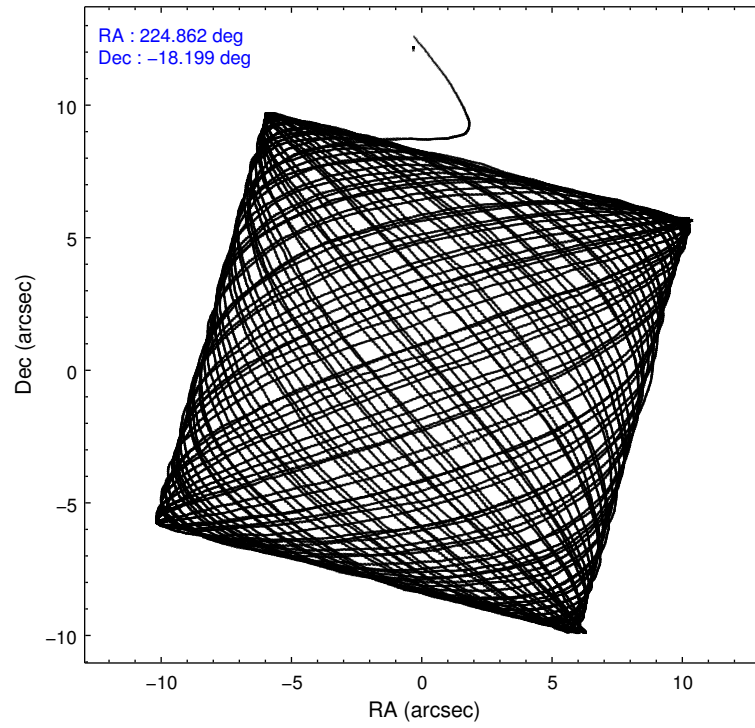
	ccd 2	ccd 3	ccd 5	ccd 6	ccd 7
level 1 events	322162	297403	452612	322325	412195
rejected events	290674	267439	228062	287245	197257
rejected %	90%	89%	50%	89%	47%

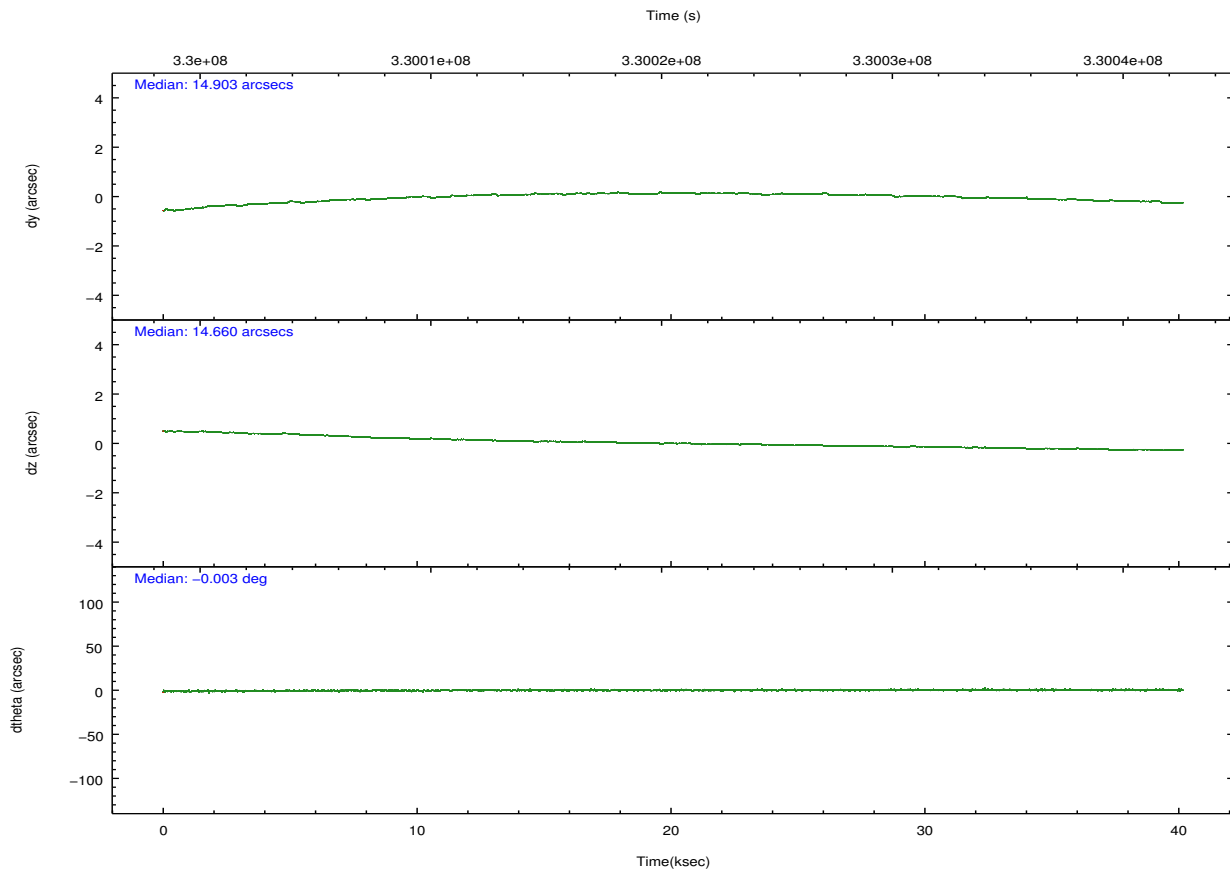
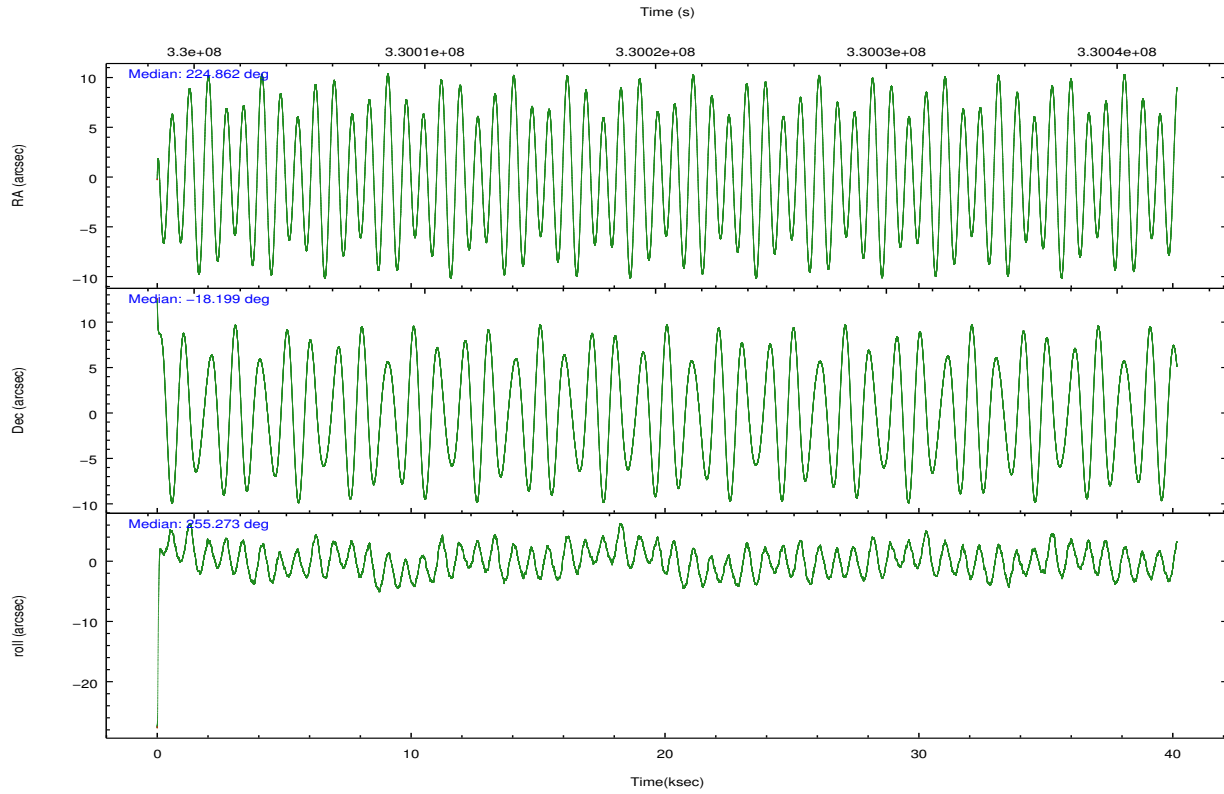
	ccd 2	ccd 3	ccd 5	ccd 6	ccd 7
grade 0 events	11877	10865	24572	13546	30655
	3%	3%	5%	4%	7%
grade 1 events	168	159	851	152	466
	0%	0%	0%	0%	0%
grade 2 events	7380	6559	68403	7592	47247
	2%	2%	15%	2%	11%
grade 3 events	3244	3400	9113	3559	21033
	1%	1%	2%	1%	5%
grade 4 events	3362	3374	8827	3486	20949
	1%	1%	1%	1%	5%
grade 5 events	10324	12574	34814	12886	37511
	3%	4%	7%	3%	9%
grade 6 events	5789	5918	114870	7088	96149
	1%	1%	25%	2%	23%
grade 7 events	280018	254554	191162	274016	158185
	86%	85%	42%	85%	38%

2.2 Compared Parameters

Parameter	Planned	Actual	Parameter	Planned	Actual
Instrument	ACIS	ACIS	Obspar format version number	7	7
Detector	ACIS-23567	ACIS-23567	Obspar file type	PREDICTED	ACTUAL
Grating	NONE	NONE	Obspar update status	NONE	UPDATED
Data mode	VFAINT	VFAINT	CCD I0 on	N	N
Observation mode	POINTING	POINTING	CCD I1 on	N	N
[deg] Pointing RA	224.854496	224.8624460767768	CCD I2 on	O1	Y
[deg] Pointing Dec	-18.172844	-18.19911028870355	CCD I3 on	O2	Y
[deg] Pointing Roll	255.118332	255.27743413852	CCD S0 on	N	N
[mm] SIM focus pos	-0.684267	-0.6828225247311905	CCD S1 on	Y	Y
[mm] SIM defocus	0	0.001444936568705701	CCD S2 on	O3	Y
[mm] SIM translation stage pos	-190.132523	-190.1425803651734	CCD S3 on	Y	Y
[mm] SIM translation stage offset	0	0.01005778216563158	CCD S4 on	N	N
[s] Observation start time (MET)	330000579.184000	329999480.66907	CCD S5 on	N	N
Observation start date	2008-06-16T10:48:34	2008-06-16T10:31:20	Number of optional ACIS chips dropped	0	0
[s] Observation end time (MET)	330040579.184000	330041231.48361	On-chip summing requested	N	N
Observation end date	2008-06-16T21:55:14	2008-06-16T22:07:11	Subarray requested	NONE	NONE
Read mode	TIMED	TIMED	Alternating exposures requested	N	N
			[s] Primary exposure time	0.000000	3.1

2.3 Aspect



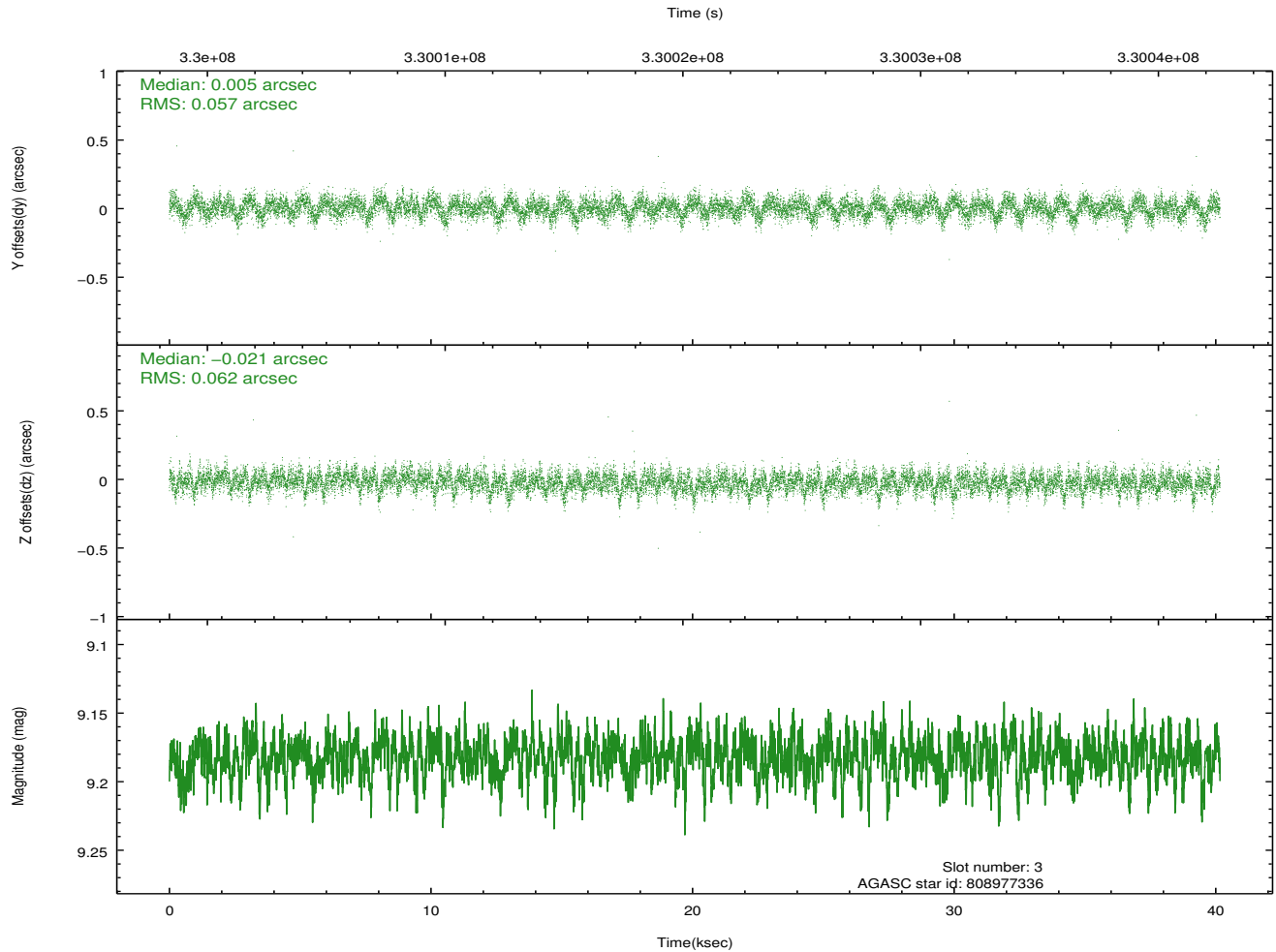
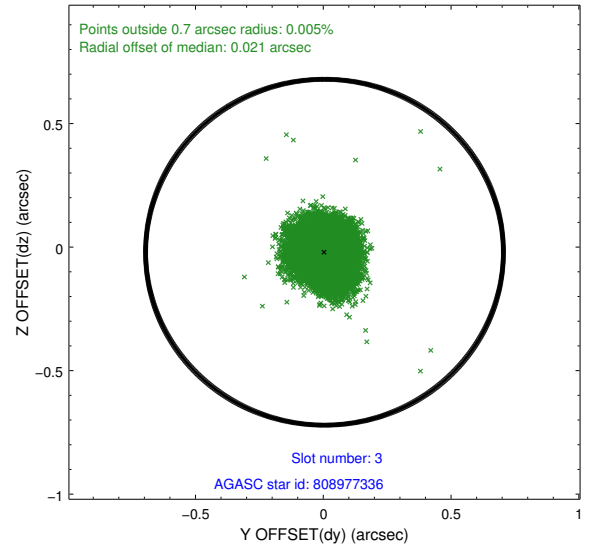
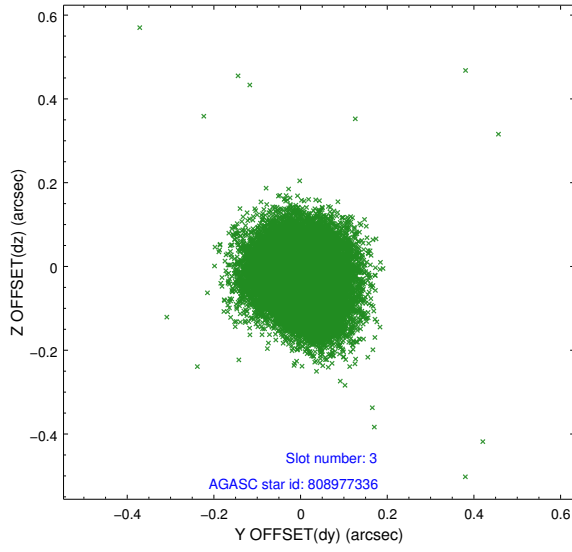


Slot Statistics

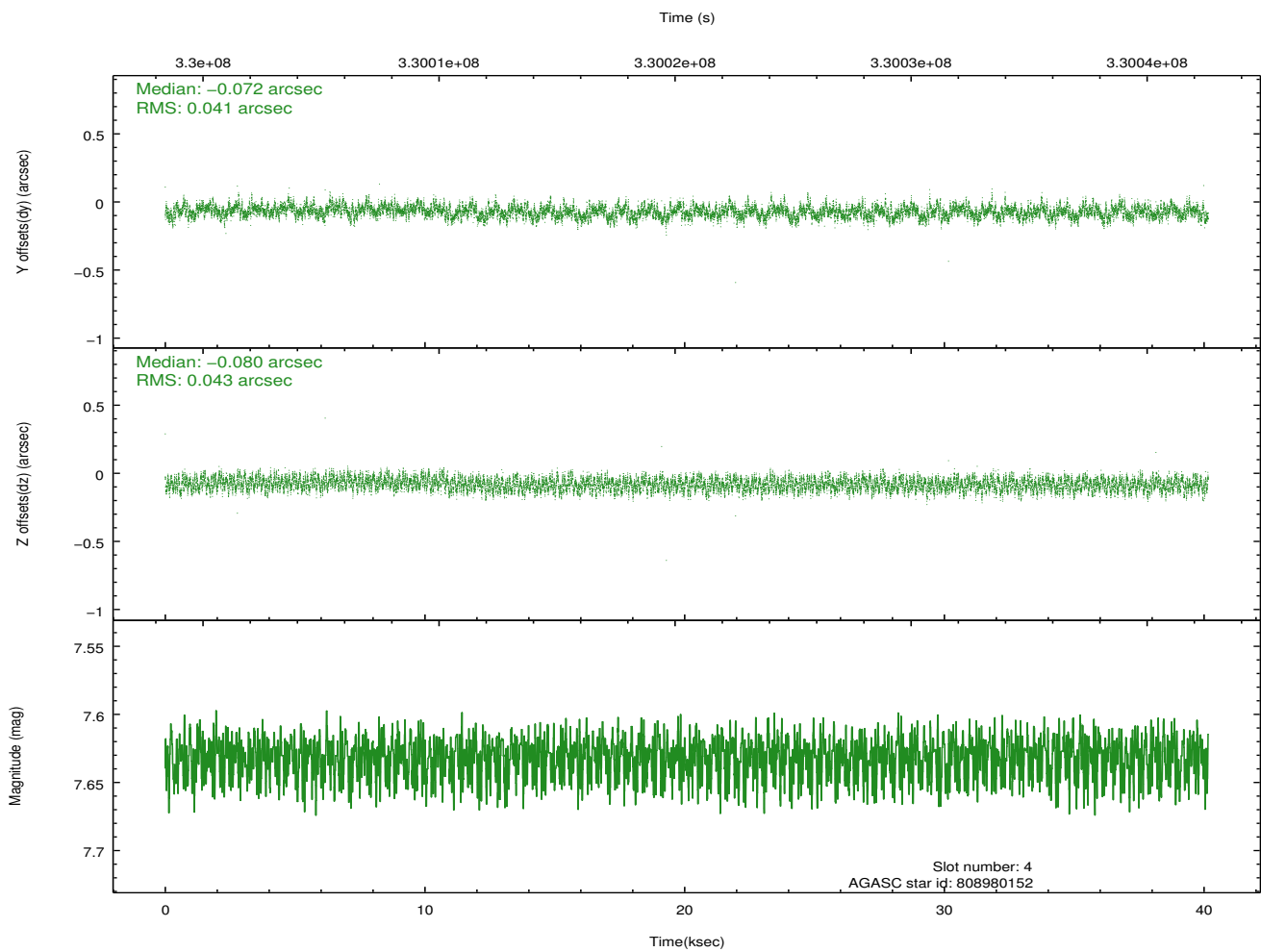
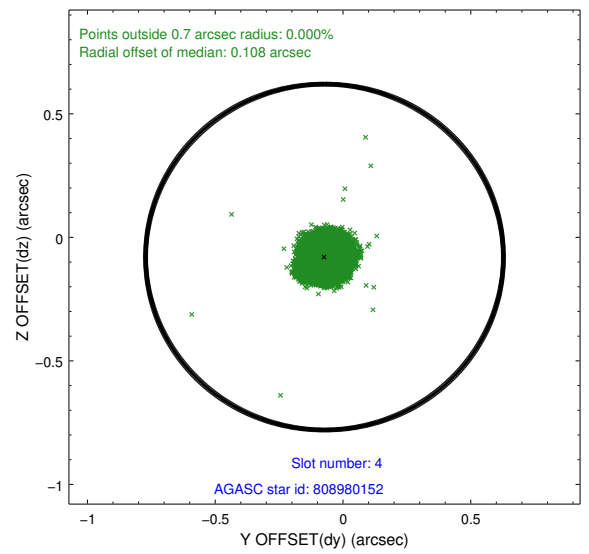
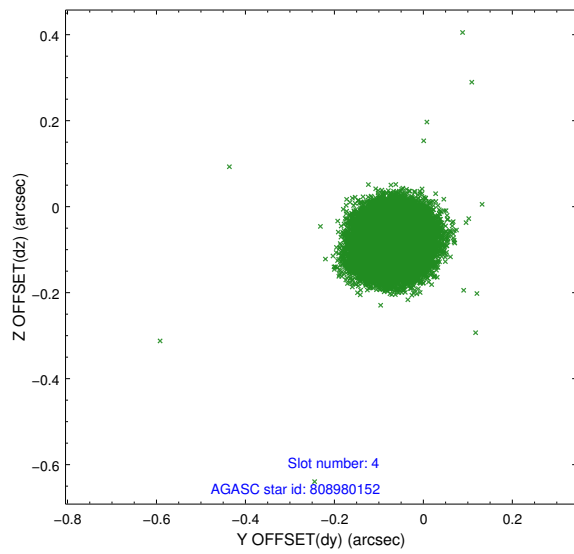
slot	status	id	mag	n_pts	med_dy	med_dz	dr1	dr2	ra	dec	mean_y	mean_z
0	FID	ACIS-S-2	6.89	9797	-0.109	-0.065	0.008	0.018	0.000000	0.000000	-767.95	-1736.07
1	FID	ACIS-S-4	6.98	9797	0.107	0.064	0.007	0.012	0.000000	0.000000	2145.56	172.48
2	FID	ACIS-S-6	7.11	9796	-0.025	0.008	0.010	0.020	0.000000	0.000000	394.17	809.86
3	GUIDE	808977336	9.18	19580	0.005	-0.021	0.089	0.144	225.166938	-18.446507	679.33	1284.71
4	GUIDE	808980152	7.63	19594	-0.072	-0.080	0.065	0.100	225.095288	-18.627285	1370.90	1215.06
5	GUIDE	808981064	9.38	19565	0.049	-0.037	0.132	0.202	224.446530	-18.014099	-191.41	-1495.26
6	GUIDE	808981480	9.19	19587	-0.058	0.047	0.082	0.132	224.674827	-17.679414	-1557.69	-1051.78
7	GUIDE	808982952	9.87	19558	0.080	0.093	0.135	0.221	224.394705	-17.930651	-435.74	-1745.24

2.4 Star Slots

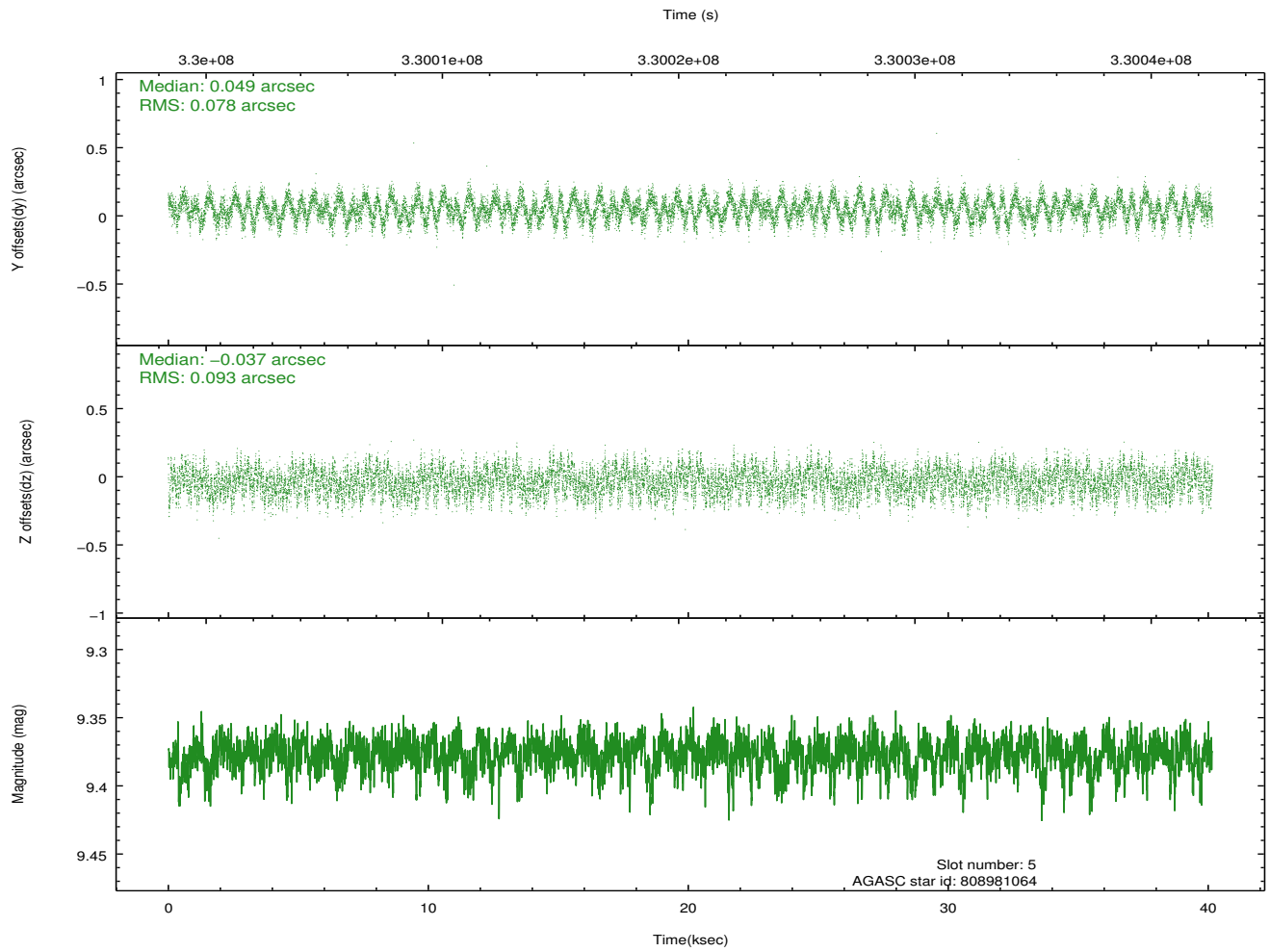
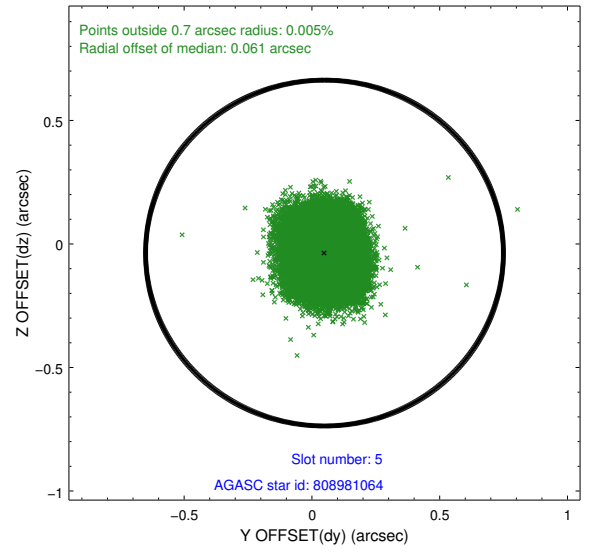
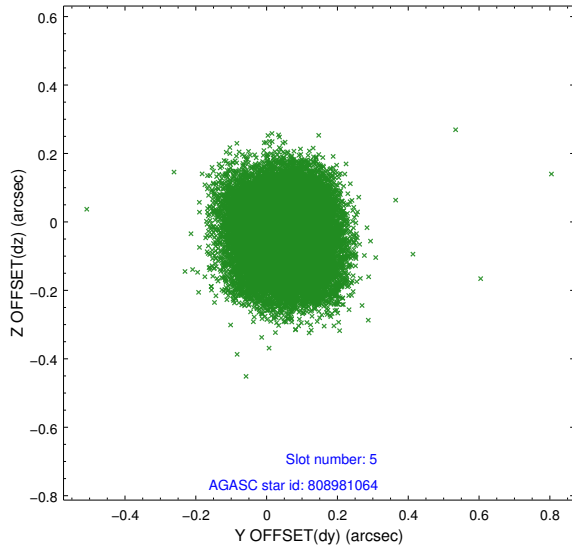
2.4.1 Slot 3



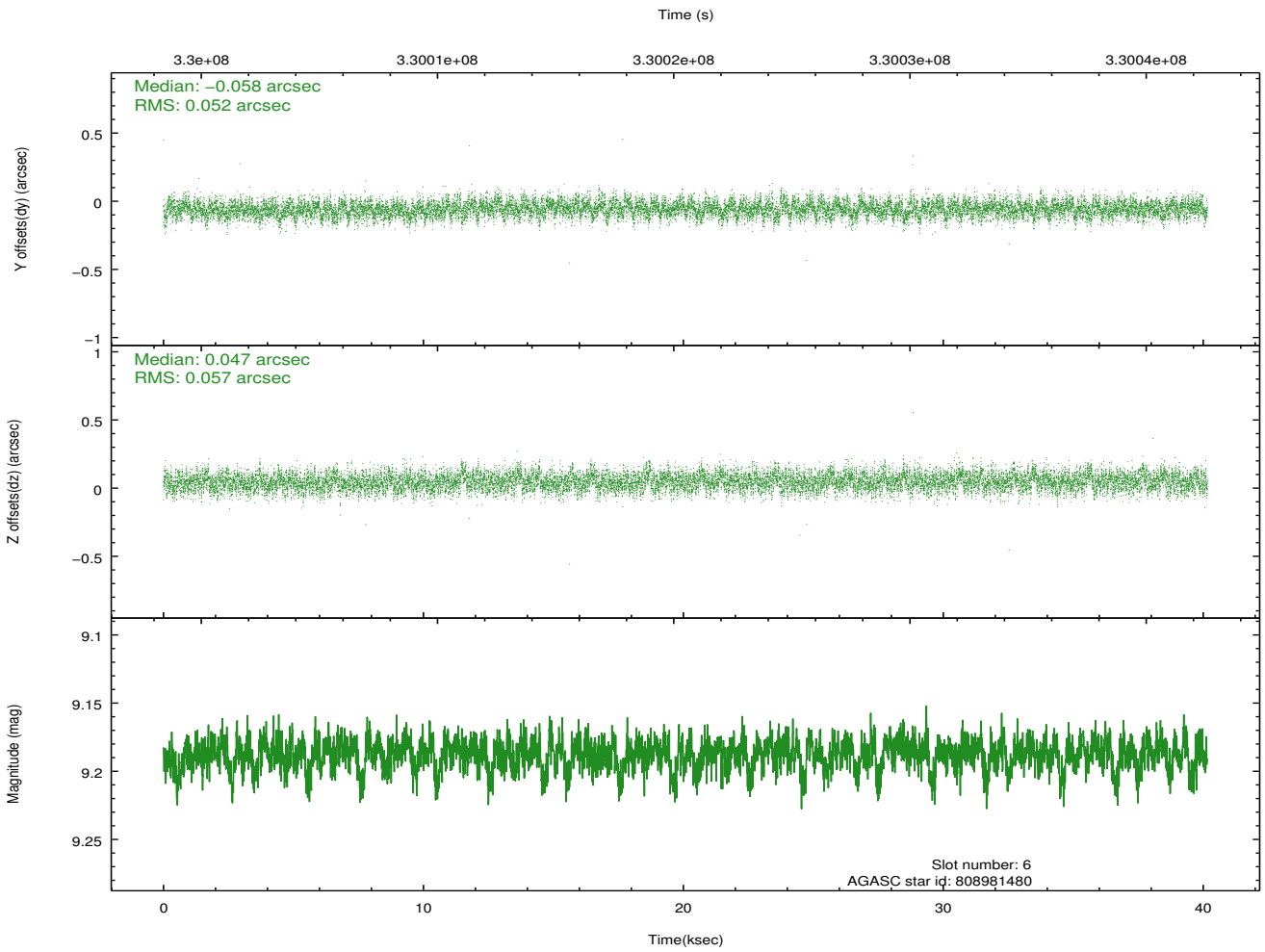
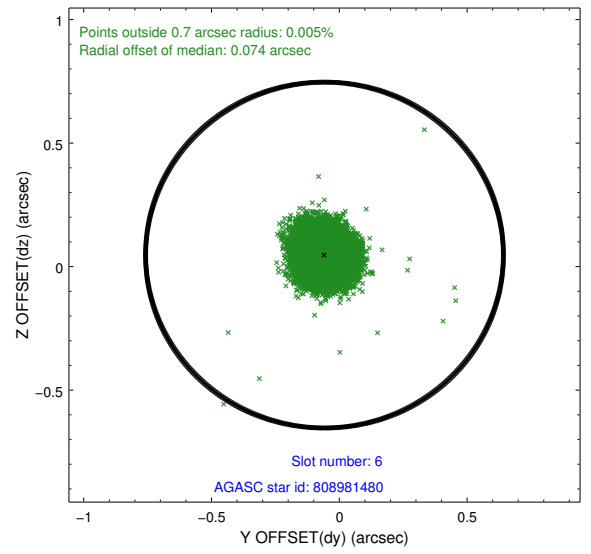
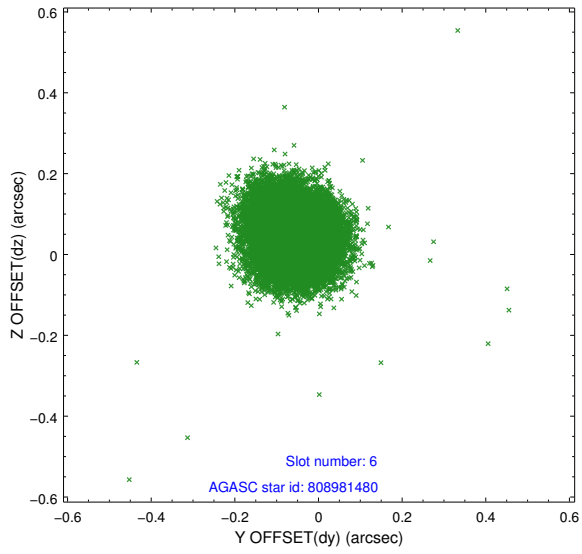
2.4.2 Slot 4



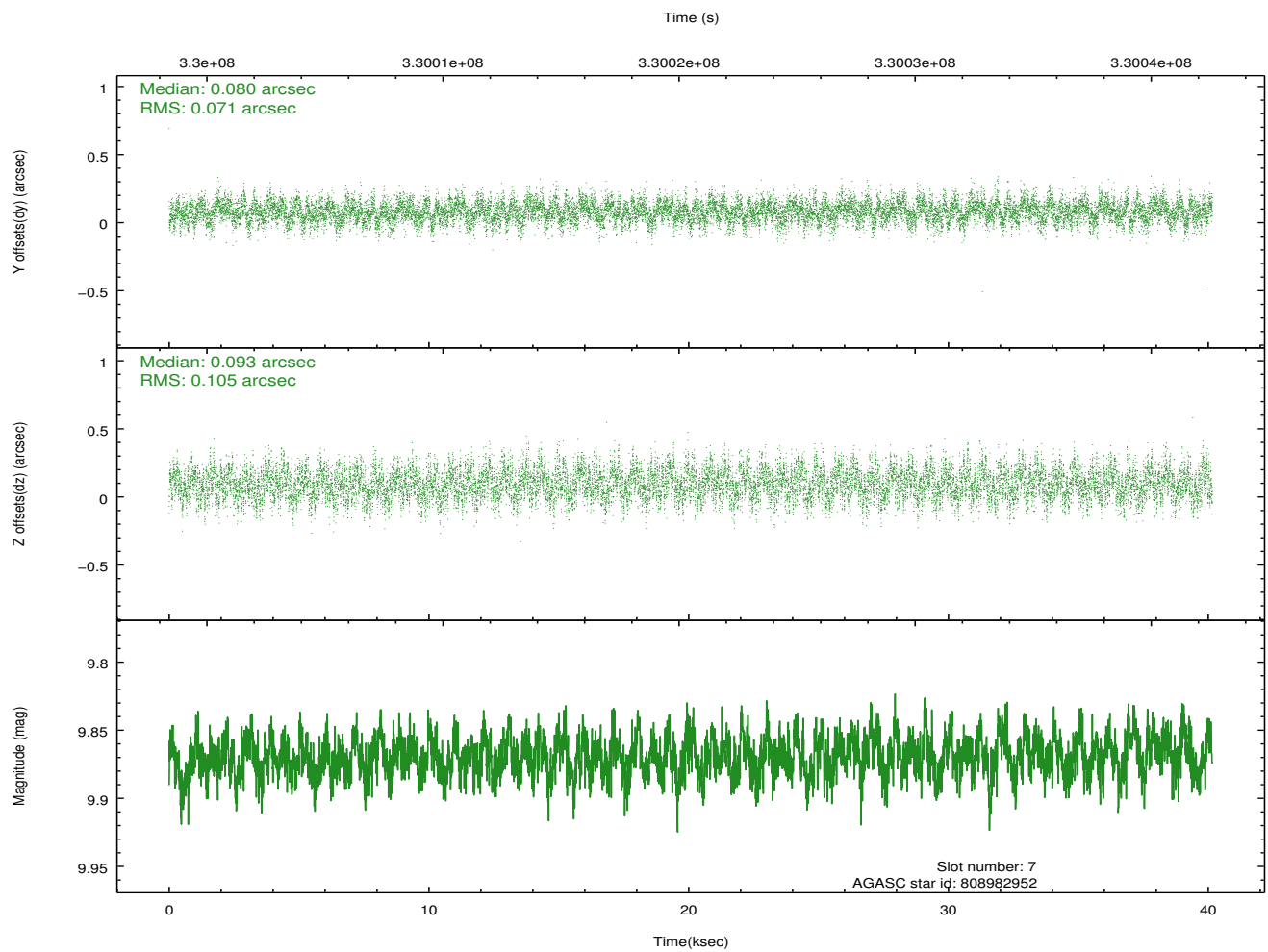
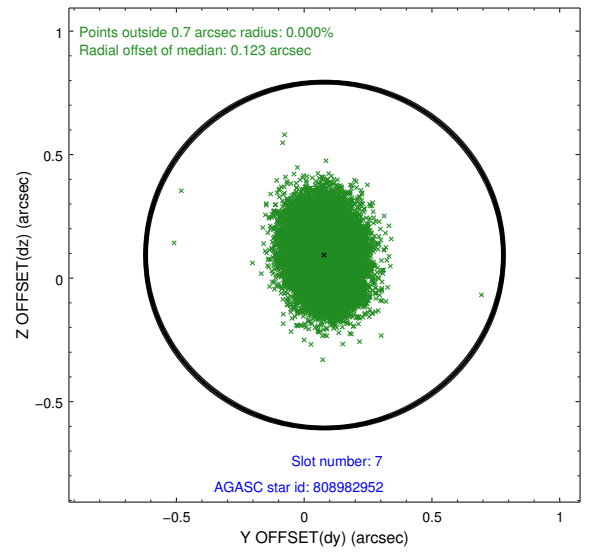
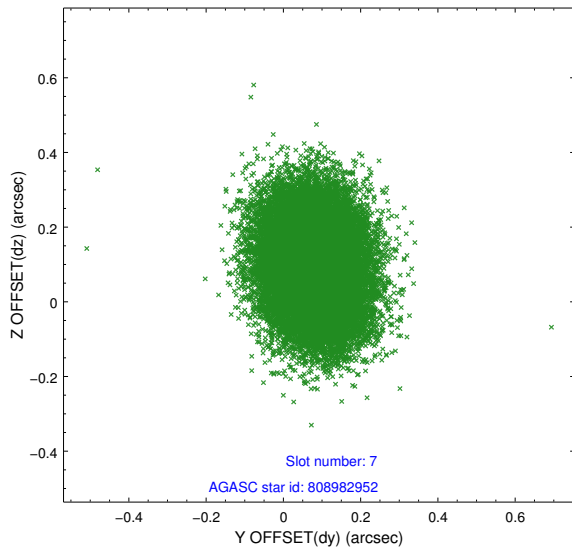
2.4.3 Slot 5



2.4.4 Slot 6

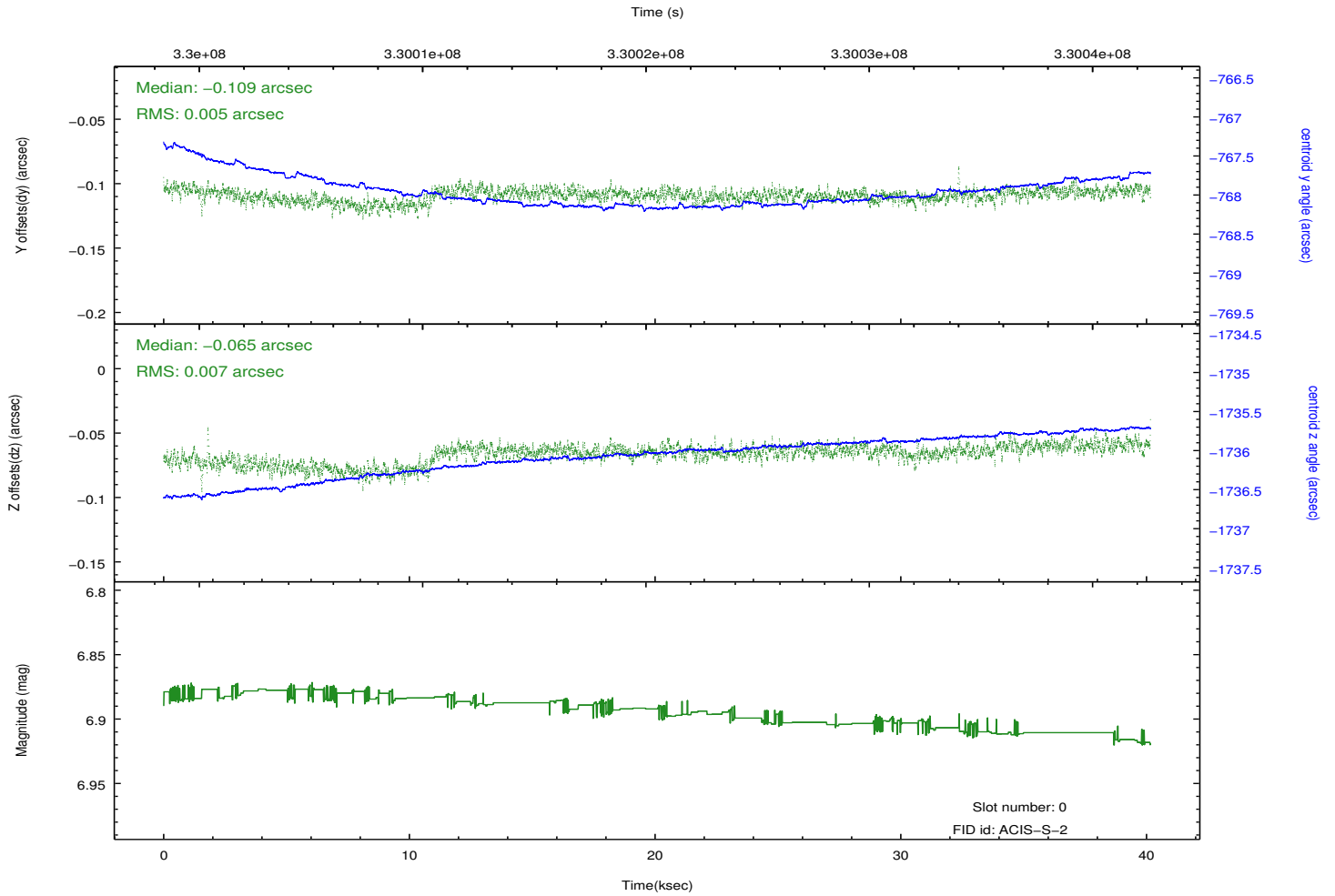
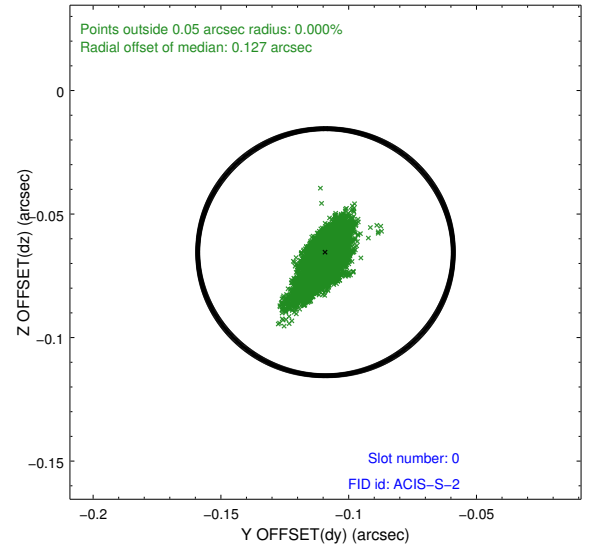
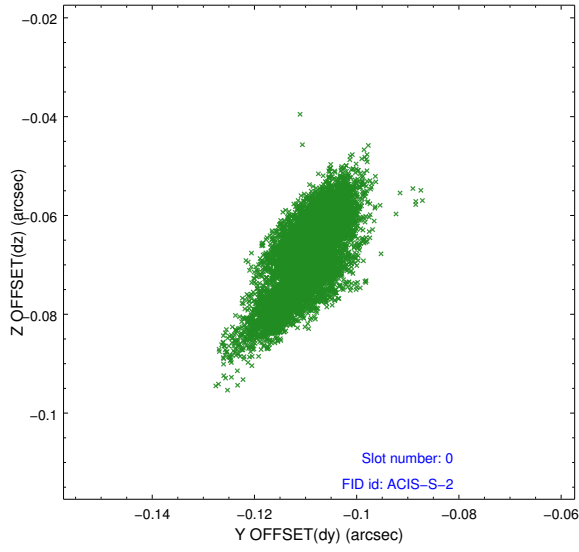


2.4.5 Slot 7

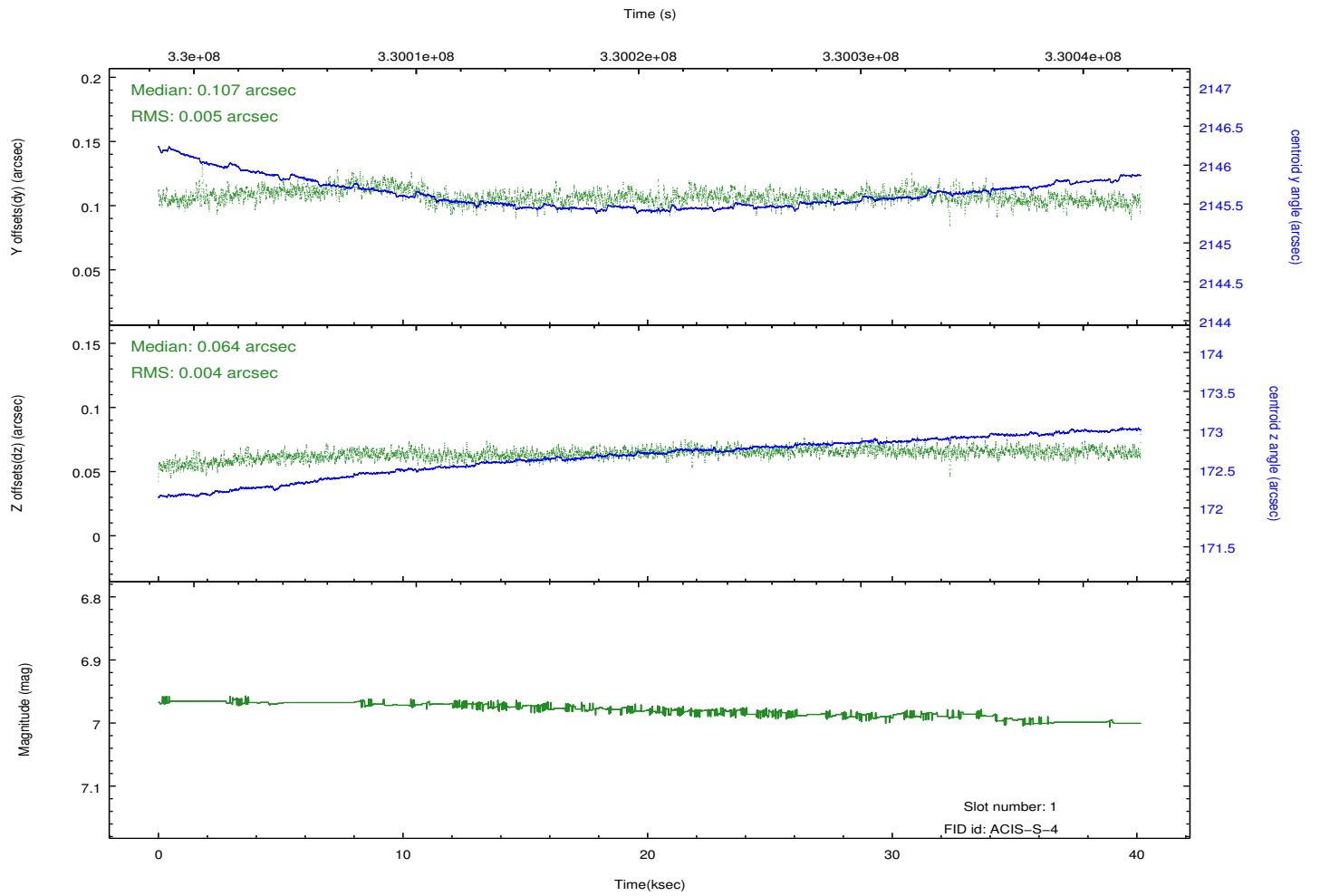
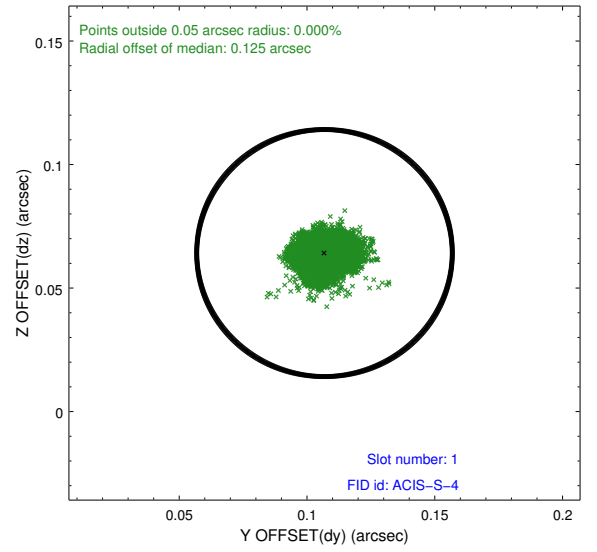
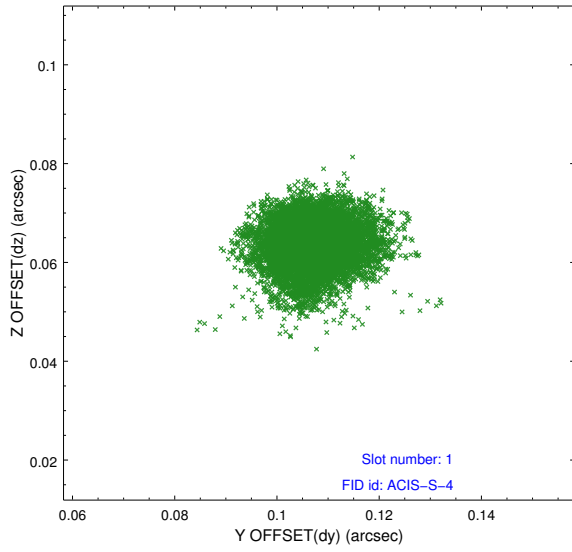


2.5 FID Slots

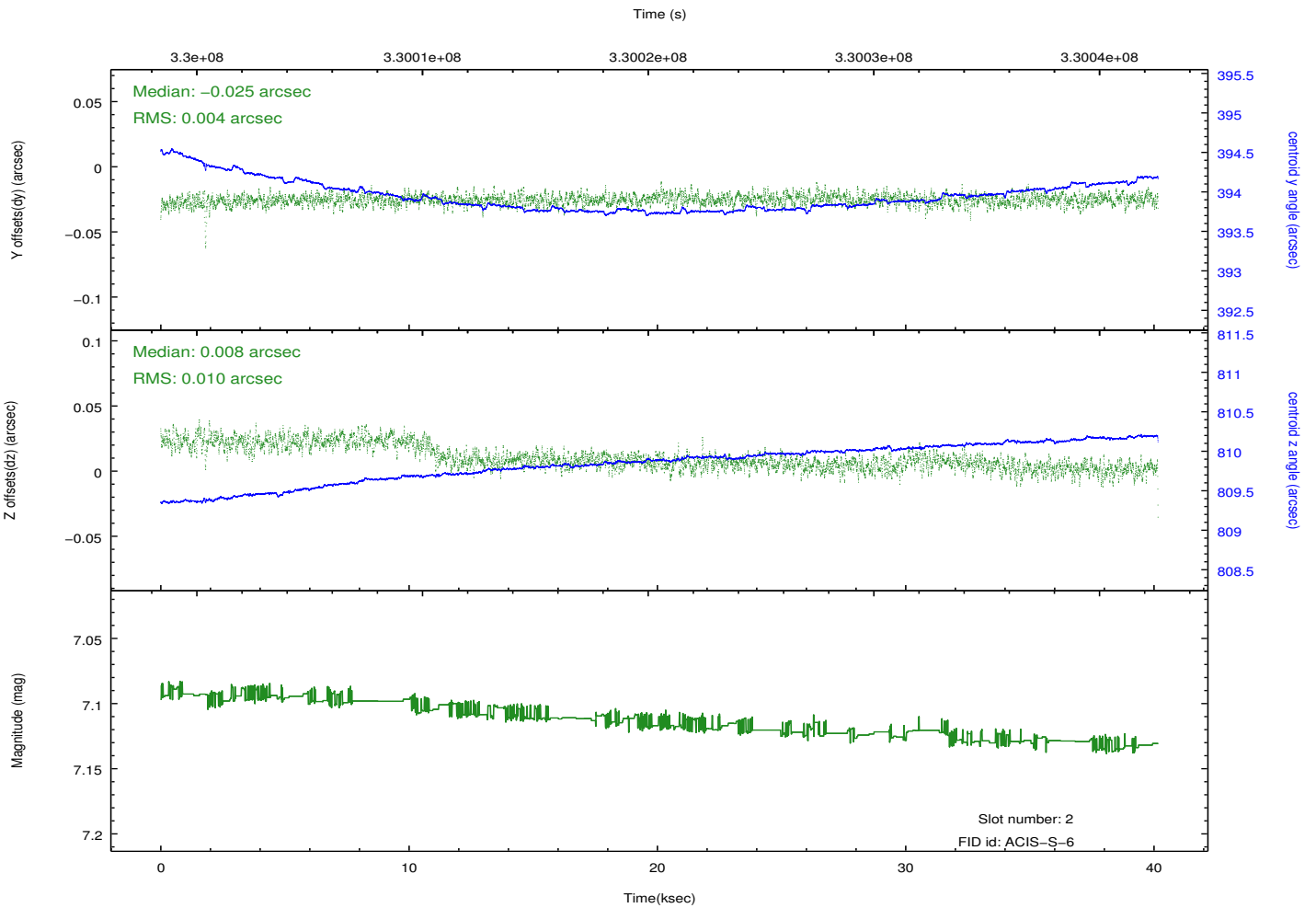
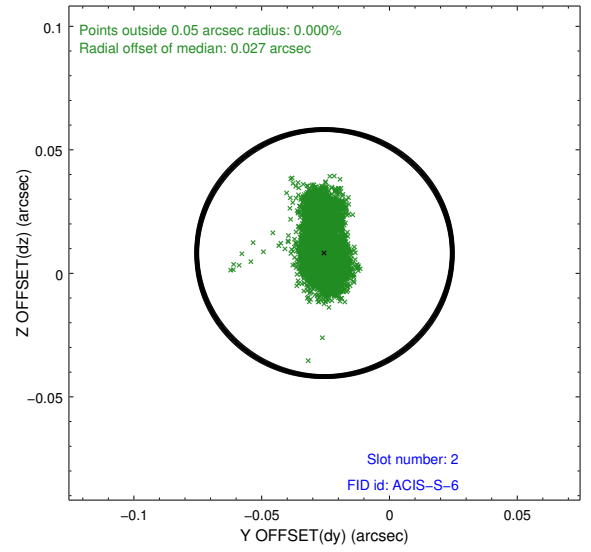
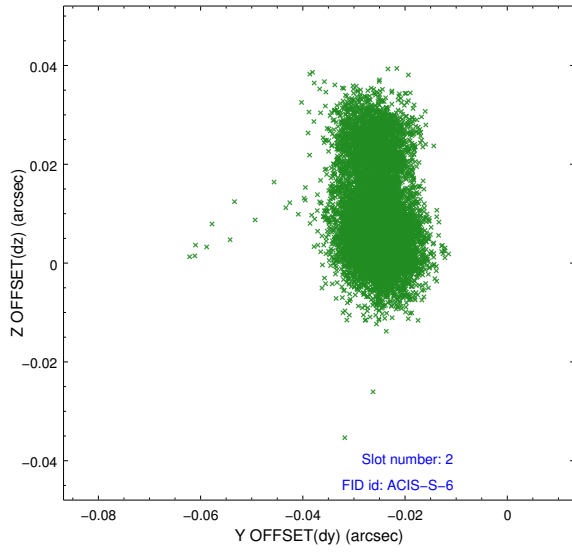
2.5.1 Slot 0



2.5.2 Slot 1



2.5.3 Slot 2



A Summary

A.1 Status

V&V Scientist	Jen Lauer
V&V Date (YYYY-MM-DD)	2012.05.22
V&V Edition	1
V&V Disposition and Status	OK
V&V Charge Time	40.1605003

A.2 Comments