

V&V Reference Report

L2 ASCDS Version : 8.4.4

Observation 9538 - L2 Version 2
Chandra X-Ray Center

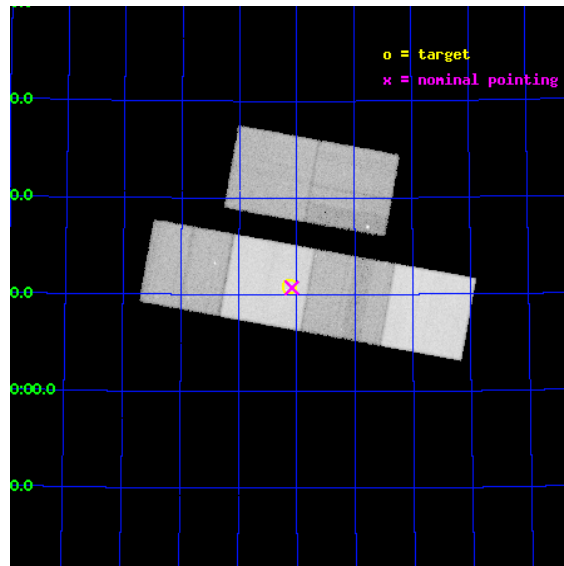
L2 Processing Date : May 9 2012

Contents

1	Front	2
2	OBI	3
2.1	OBI	3
2.1.1	Images	3
2.1.2	Bias	3
2.1.3	Parameters	4
2.1.4	Events	4
2.2	Compared Parameters	5
2.3	Aspect	6
2.4	Star Slots	9
2.4.1	Slot 3	9
2.4.2	Slot 4	10
2.4.3	Slot 5	11
2.4.4	Slot 6	12
2.4.5	Slot 7	13
2.5	FID Slots	14
2.5.1	Slot 0	14
2.5.2	Slot 1	15
2.5.3	Slot 2	16
A	Summary	17
A.1	Status	17
A.2	Comments	17

1 Front

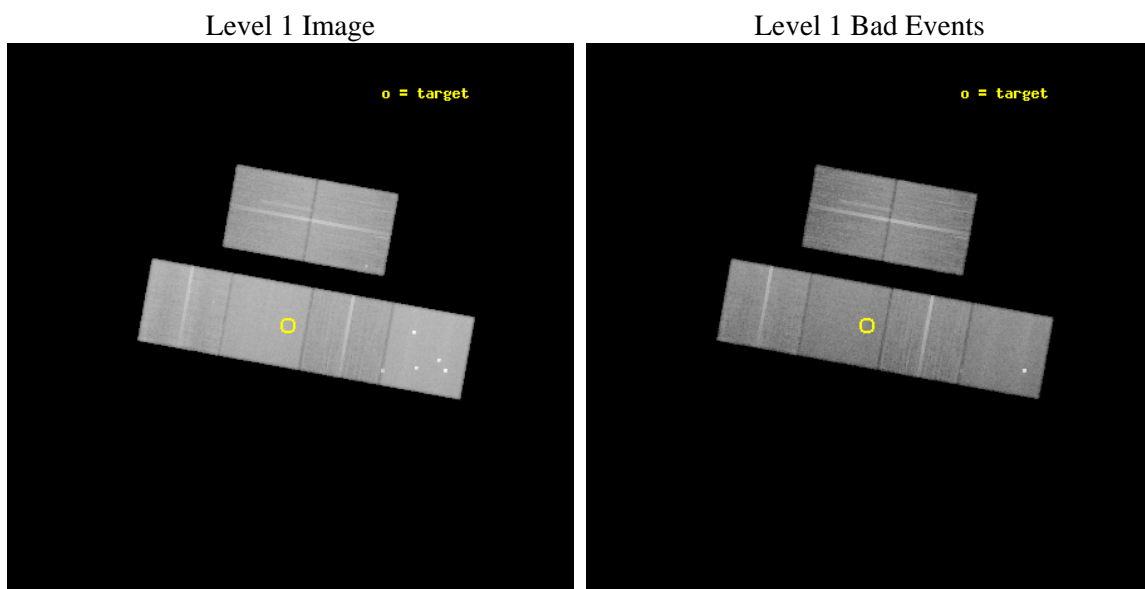
seq_num	600679	Sequence number
obs_id	9538	Observation id
title	Galaxies across the Octaves: A Chandra Legacy Survey of SINGS Galaxies	Proposal title
observer	Dr Leigh Jenkins	Principal investigator
object	DDO 53	Source name
dtycycle	0	
cycle	P	events from which exps? Prim/Second/Both
ra_targ	128.530417	Observer's specified target RA [deg]
dec_targ	66.181833	Observer's specified target Dec [deg]
ra_nom	128.52146365162	Nominal RA [deg]
dec_nom	66.178589131421	Nominal Dec [deg]
roll_nom	190.23129315102	Nominal Roll [deg]
revision	2	Processing version of data
ontime	26188.799902499	Sum of GTIs [s]
livetime	25857.181549131	Livetime [s]
ontime2	26188.799902499	Sum of GTIs [s]
ontime3	26188.799902499	Sum of GTIs [s]
ontime5	26188.799902499	Sum of GTIs [s]
ontime6	26188.799902499	Sum of GTIs [s]
ontime7	26188.799902499	Sum of GTIs [s]
ontime8	26188.799902499	Sum of GTIs [s]
l2events	572624	Number of level 2 events



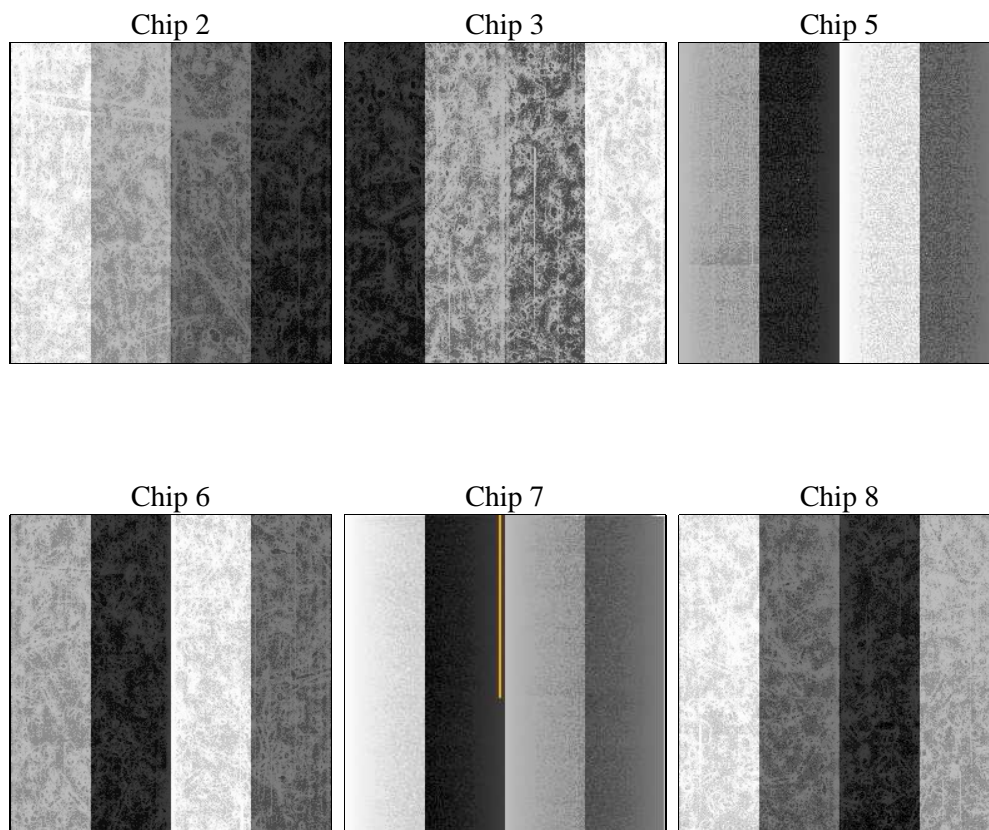
2 OBI

2.1 OBI

2.1.1 Images



2.1.2 Bias



2.1.3 Parameters

obi_num	0	Obi number	sched_exp_time	26041.082000	[s] Scheduled observation exposure time
ascdsver	8.4.4	Processing system revision	ontime	26188.799902499	Sum of GTIs [s]
caldbver	4.4.9	 	ontime2	26188.799902499	Sum of GTIs [s]
date	2012-05-09T03:31:51	Date and time of file creation	ontime3	26188.799902499	Sum of GTIs [s]
revision	2	Processing version of data	ontime5	26188.799902499	Sum of GTIs [s]
			ontime6	26188.799902499	Sum of GTIs [s]
			ontime7	26188.799902499	Sum of GTIs [s]
			ontime8	26188.799902499	Sum of GTIs [s]
			l1events	2059190	Number of level 1 events

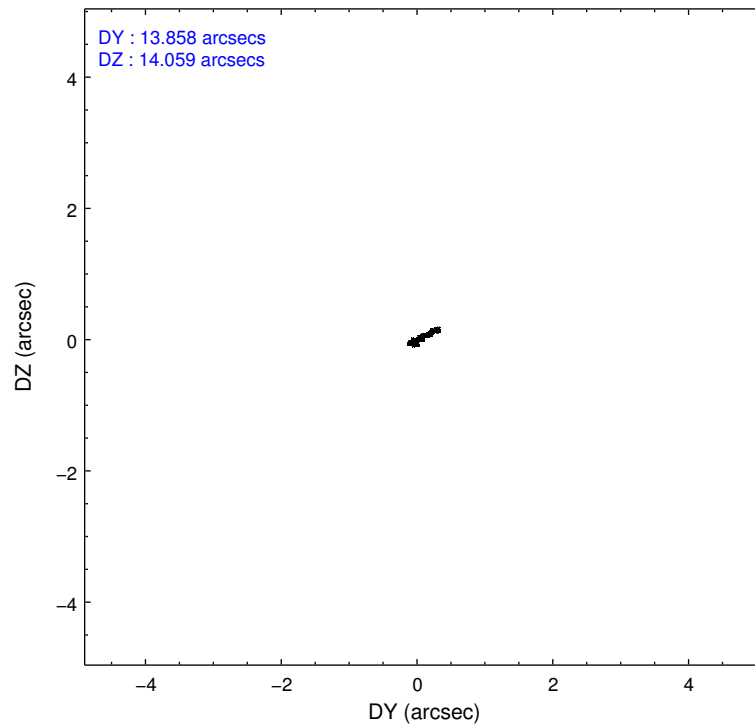
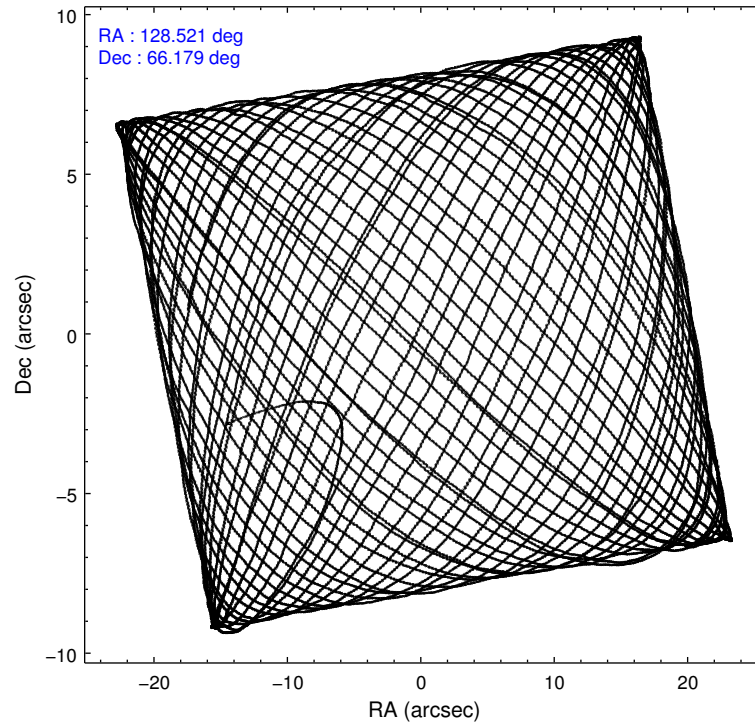
2.1.4 Events

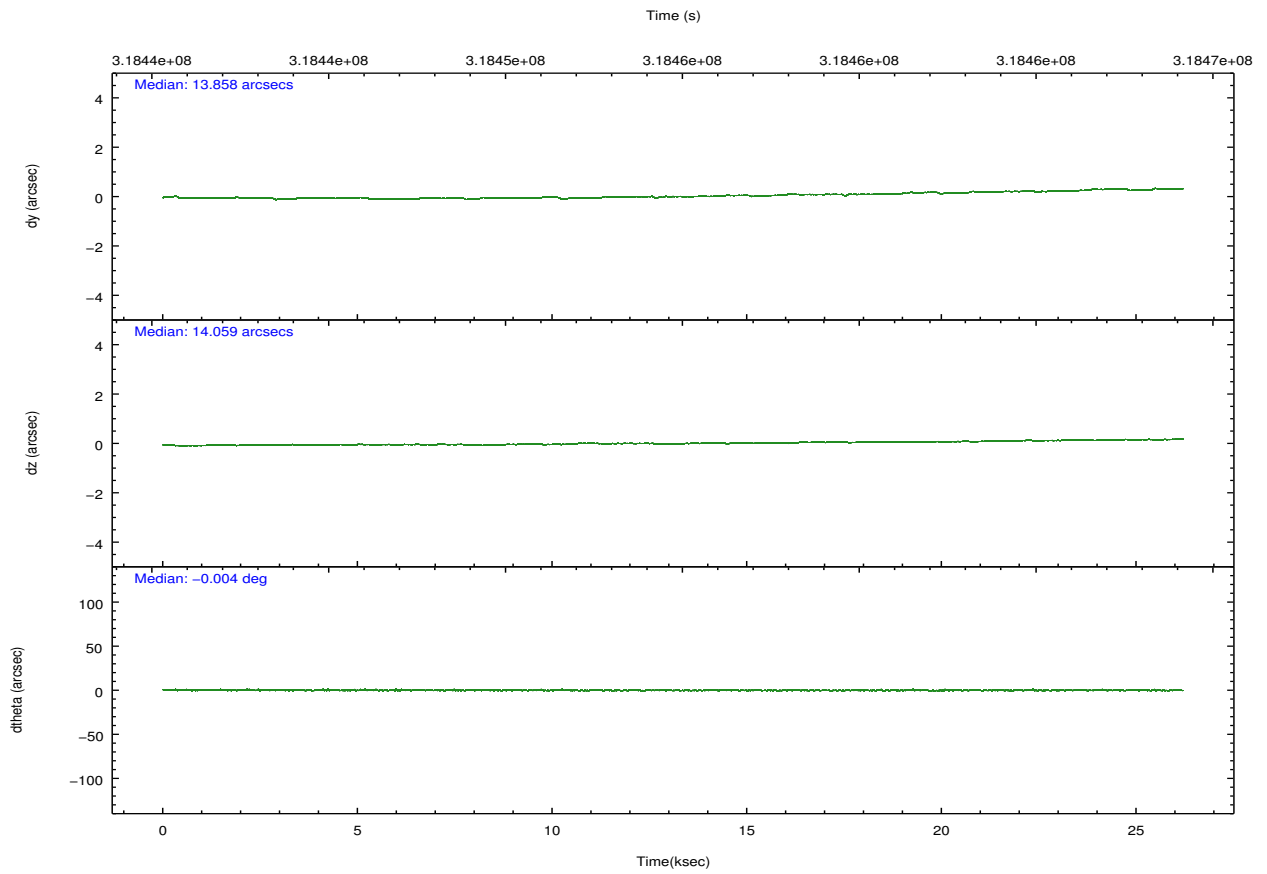
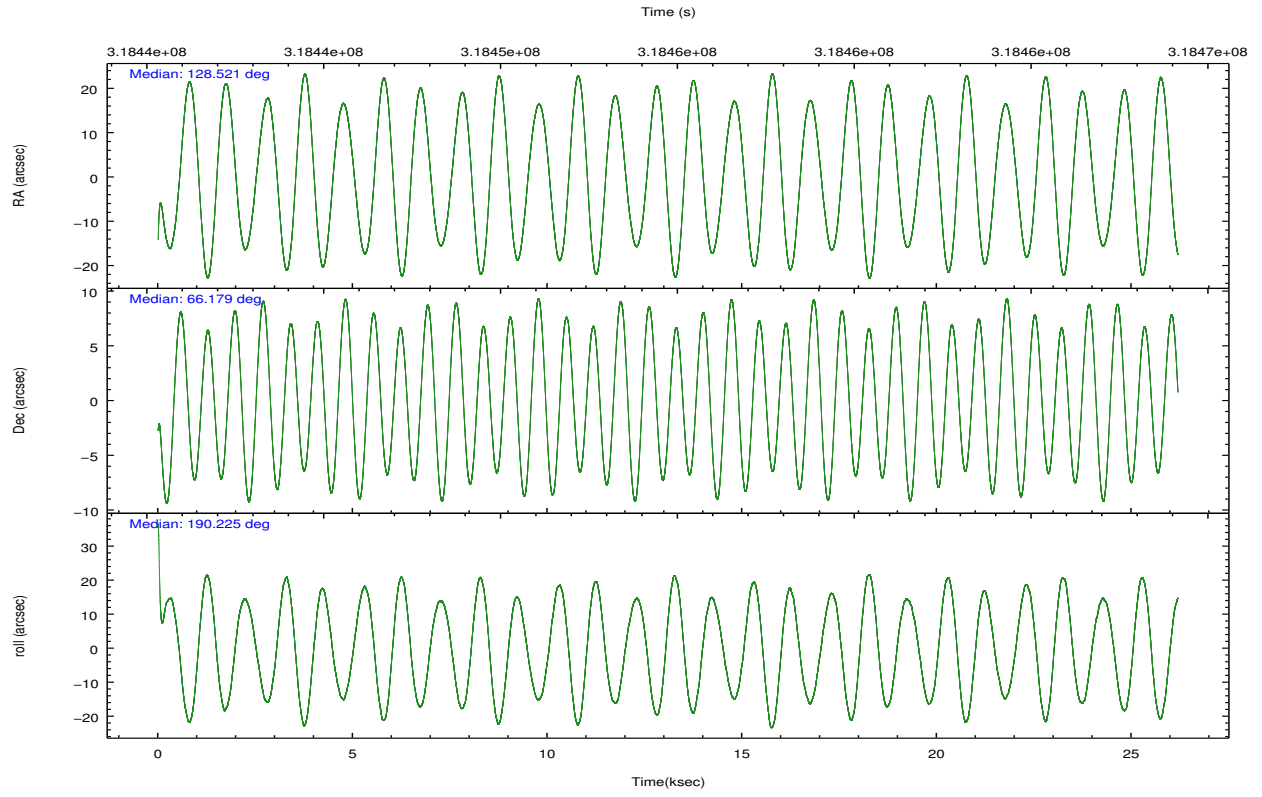
	ccd 2	ccd 3	ccd 5	ccd 6	ccd 7	ccd 8		ccd 2	ccd 3	ccd 5	ccd 6	ccd 7	ccd 8
level 1 events	292742	281187	446030	291372	385116	362743	grade 0 events	31483	34007	31634	29990	15311	44438
rejected events	236830	221997	229653	232996	214290	260279		10%	12%	7%	10%	3%	12%
rejected %	80%	78%	51%	79%	55%	71%	grade 1 events	289	311	832	232	361	323
								0%	0%	0%	0%	0%	0%
							grade 2 events	9822	9855	64596	12091	34087	20675
								3%	3%	14%	4%	8%	5%
							grade 3 events	3883	4114	7898	3901	13659	8890
								1%	1%	1%	1%	3%	2%
							grade 4 events	3922	4119	6741	3781	13665	8334
								1%	1%	1%	1%	3%	2%
							grade 5 events	10606	11884	31289	12243	32947	16055
								3%	4%	7%	4%	8%	4%
							grade 6 events	7539	7842	109814	9341	97517	21670
								2%	2%	24%	3%	25%	5%
							grade 7 events	225198	209055	193226	219793	177569	242358
								76%	74%	43%	75%	46%	66%

2.2 Compared Parameters

Parameter	Planned	Actual	Parameter	Planned	Actual
Instrument	ACIS	ACIS	Obspar format version number	7	7
Detector	ACIS-235678	ACIS-235678	Obspar file type	PREDICTED	ACTUAL
Grating	NONE	NONE	Obspar update status	NONE	UPDATED
Data mode	FAINT	FAINT	CCD I0 on	N	N
Observation mode	POINTING	POINTING	CCD I1 on	N	N
[deg] Pointing RA	128.572598	128.5214636516216	CCD I2 on	O1	Y
[deg] Pointing Dec	66.196526	66.17858913142082	CCD I3 on	O2	Y
[deg] Pointing Roll	190.027869	190.2312931510154	CCD S0 on	N	N
[mm] SIM focus pos	-0.684267	-0.6828225247311905	CCD S1 on	Y	Y
[mm] SIM defocus	0	0.001444936568705701	CCD S2 on	Y	Y
[mm] SIM translation stage pos	-190.132523	-190.1425803651734	CCD S3 on	Y	Y
[mm] SIM translation stage offset	0	0.01005778216563158	CCD S4 on	Y	Y
[s] Observation start time (MET)	318441796.184000	318440431.5938	CCD S5 on	N	N
Observation start date	2008-02-03T16:02:11	2008-02-03T15:40:31	Number of optional ACIS chips dropped	0	0
[s] Observation end time (MET)	318467837.184000	318468063.03264	On-chip summing requested	N	N
Observation end date	2008-02-03T23:16:12	2008-02-03T23:21:03	Subarray requested	NONE	NONE
Read mode	TIMED	TIMED	Alternating exposures requested	N	N
			[s] Primary exposure time	0.000000	3.2

2.3 Aspect



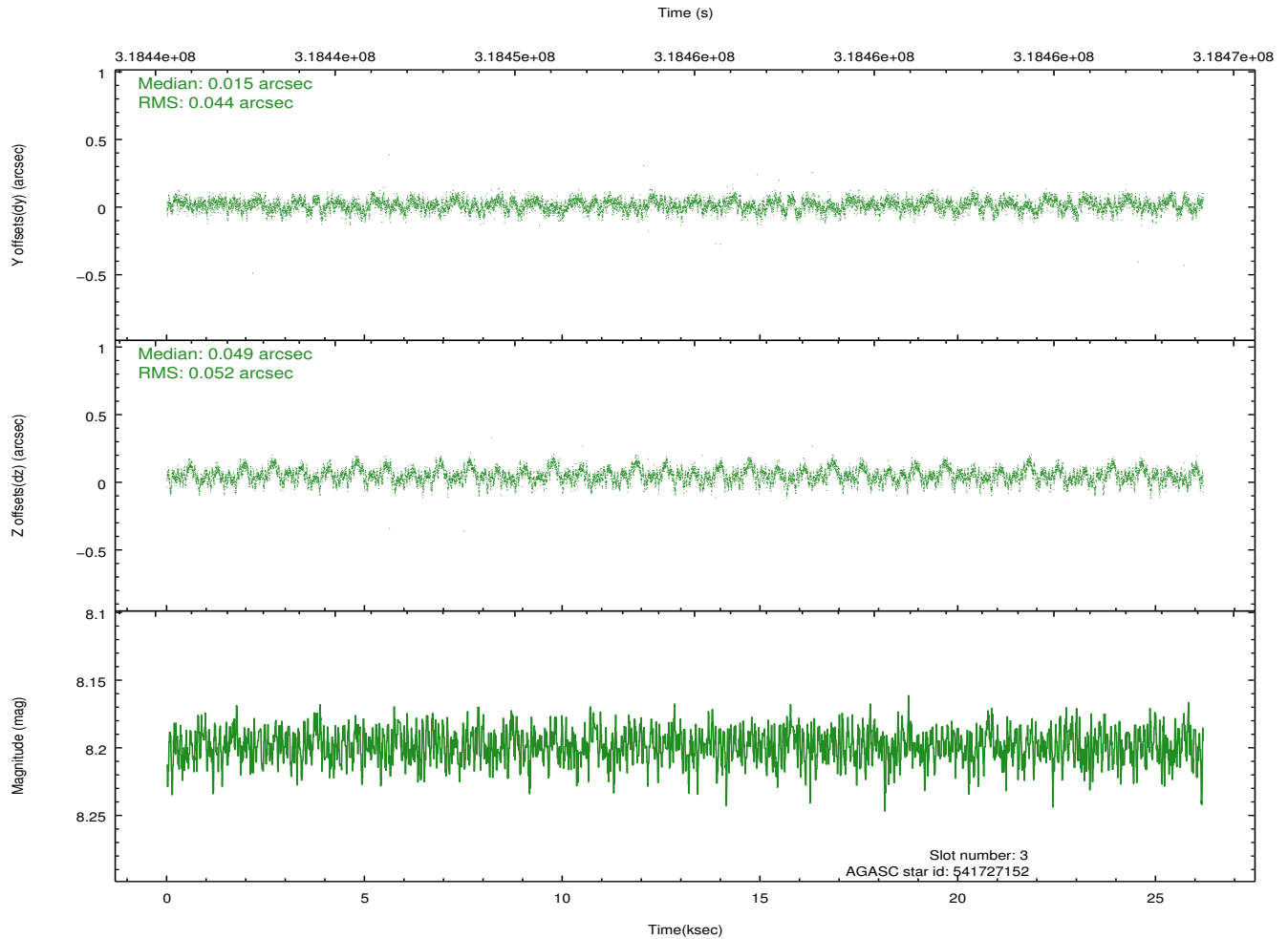
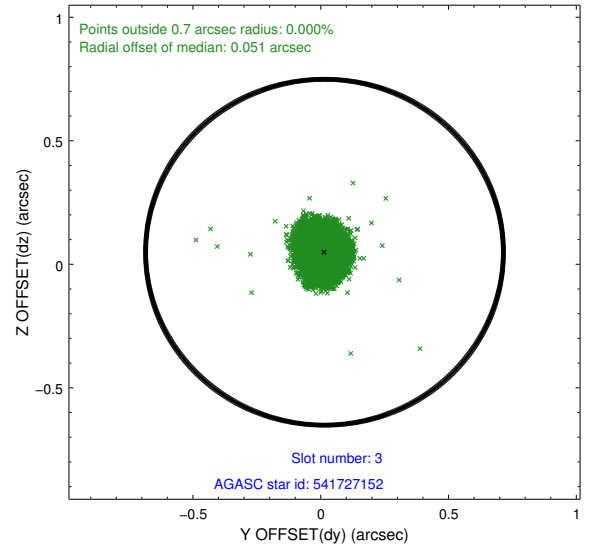
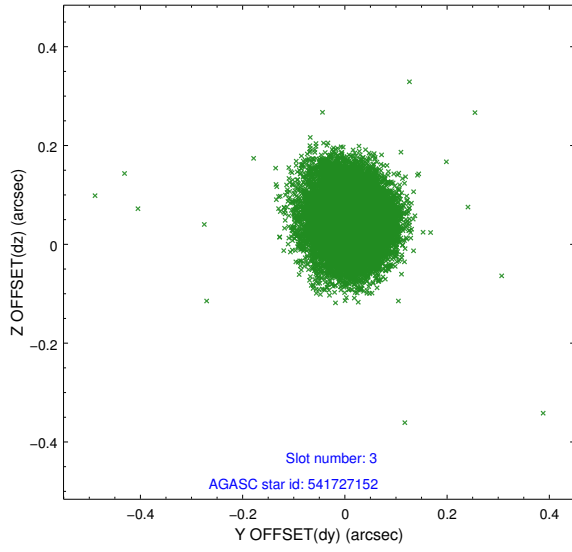


Slot Statistics

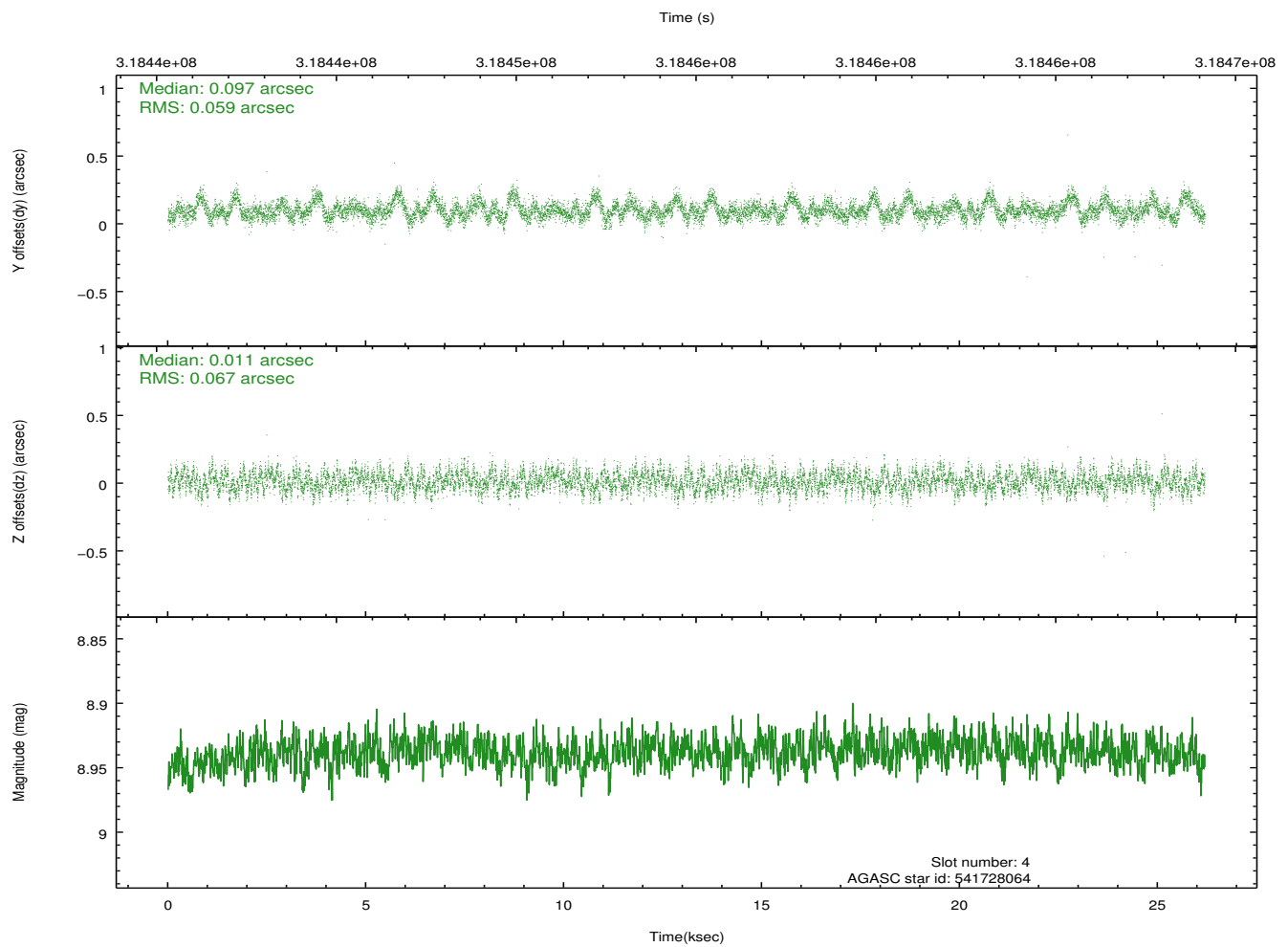
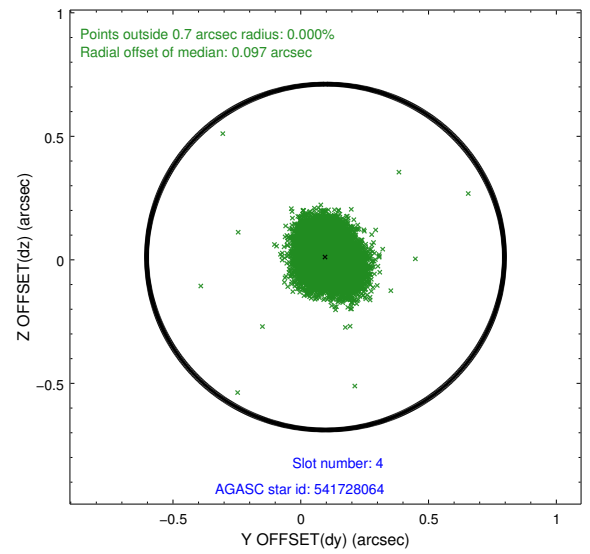
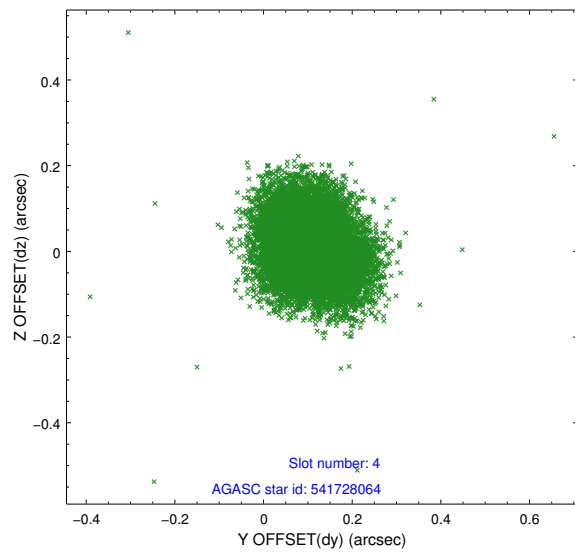
slot	status	id	mag	n_pts	med_dy	med_dz	dr1	dr2	ra	dec	mean_y	mean_z
0	FID	ACIS-S-2	7.10	6389	-0.060	-0.057	0.009	0.015	0.000000	0.000000	-766.90	-1735.43
1	FID	ACIS-S-4	7.19	6386	0.191	0.044	0.009	0.017	0.000000	0.000000	2146.58	173.05
2	FID	ACIS-S-5	7.23	6388	-0.163	0.021	0.007	0.011	0.000000	0.000000	-1819.71	166.80
3	GUIDE	541727152	8.20	12775	0.015	0.049	0.072	0.116	127.263195	66.213821	1857.79	-411.38
4	GUIDE	541728064	8.94	12776	0.097	0.011	0.095	0.154	128.919170	66.393334	-615.19	-611.64
5	GUIDE	541732960	9.80	12760	0.052	-0.048	0.160	0.263	127.553666	65.602989	1861.93	1827.97
6	GUIDE	541735376	8.84	12771	-0.109	-0.015	0.077	0.122	130.213854	66.046173	-2272.07	920.03
7	GUIDE	541732112	8.84	12773	-0.049	-0.002	0.097	0.155	128.611362	66.895405	-492.16	-2467.43

2.4 Star Slots

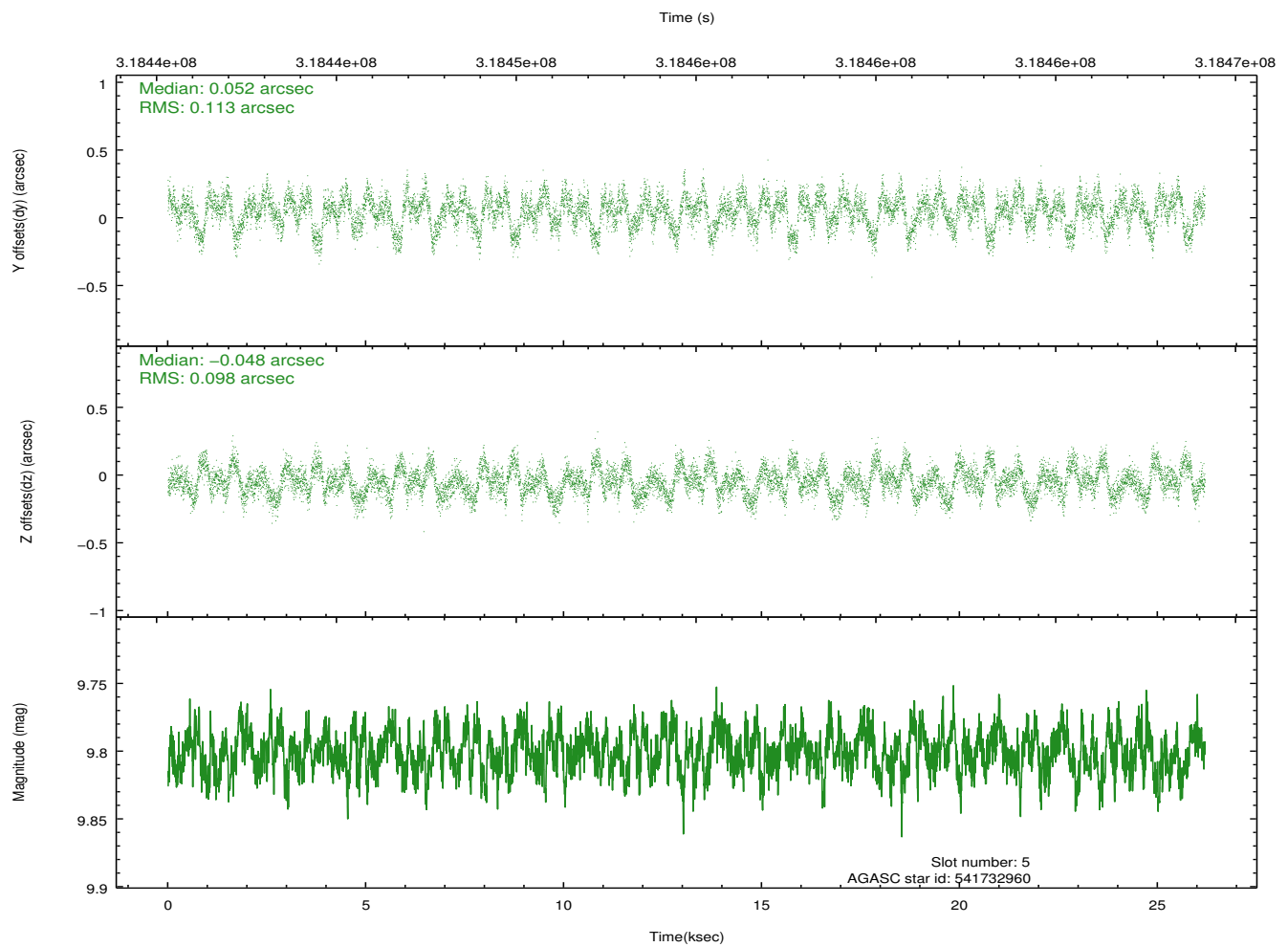
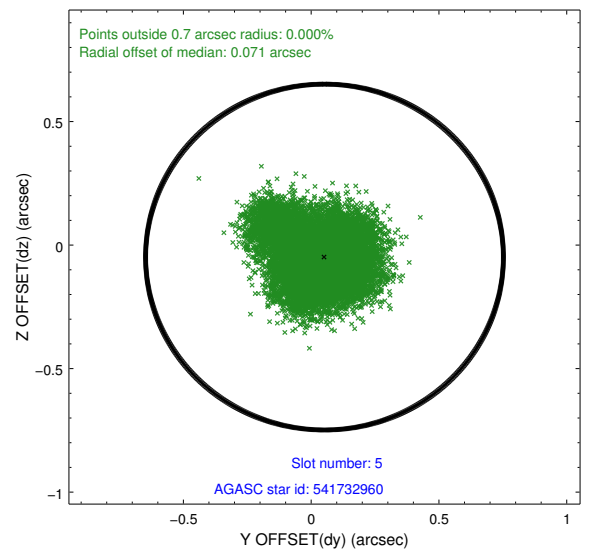
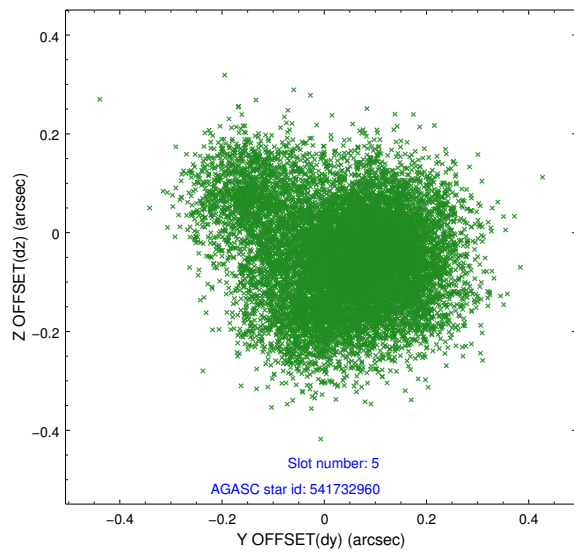
2.4.1 Slot 3



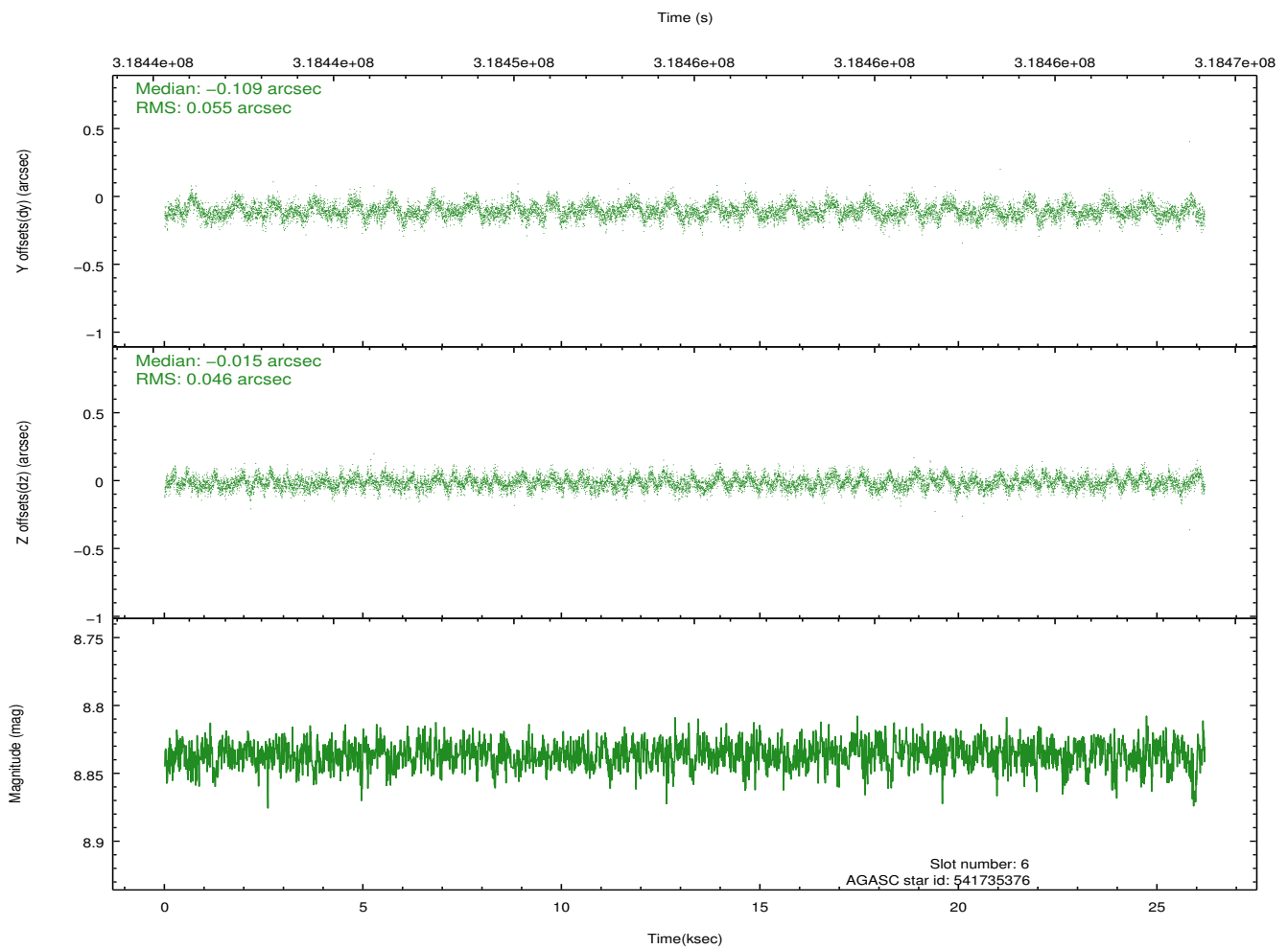
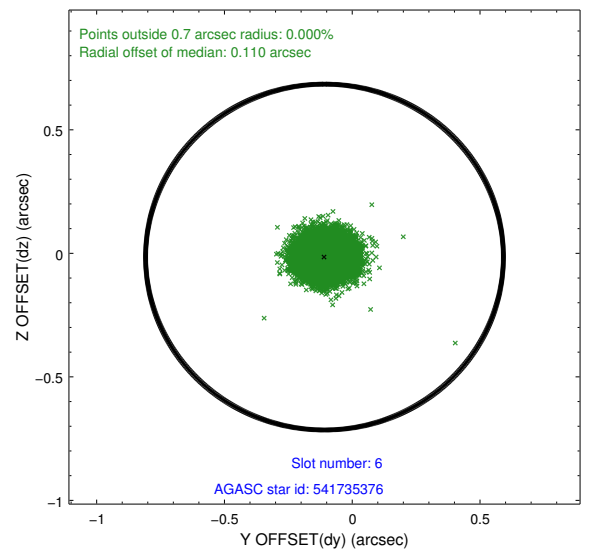
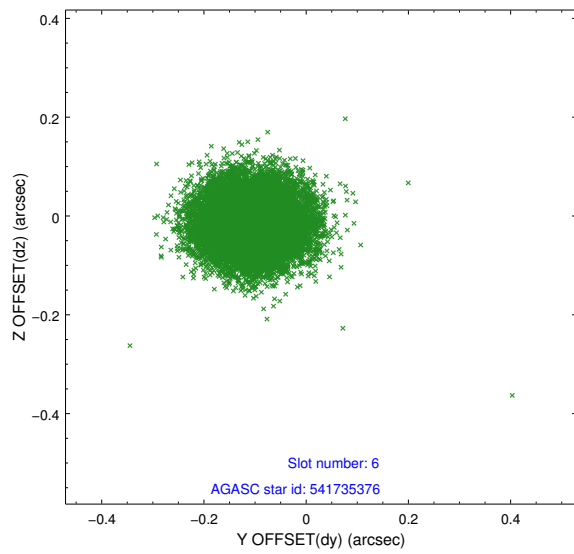
2.4.2 Slot 4



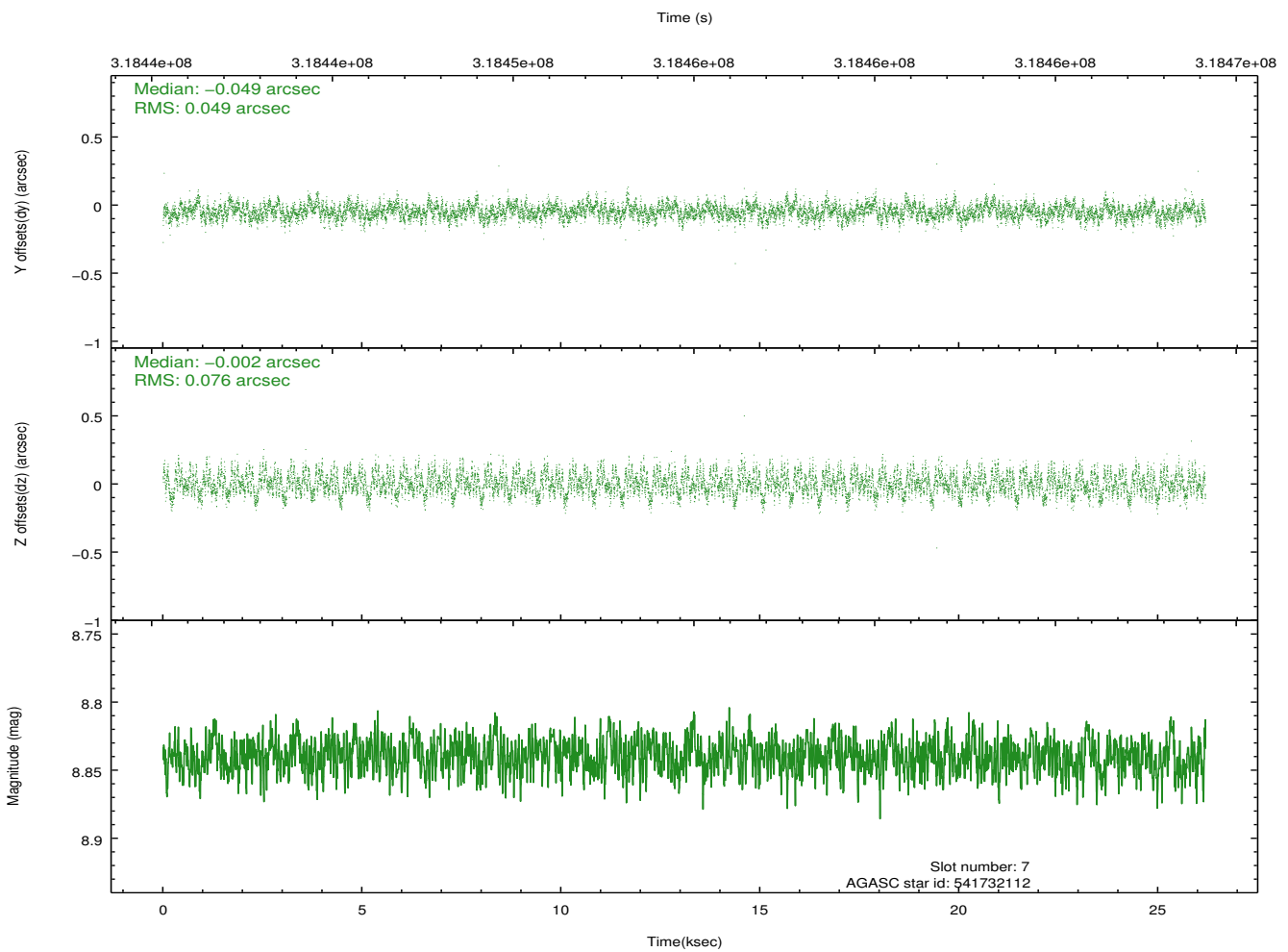
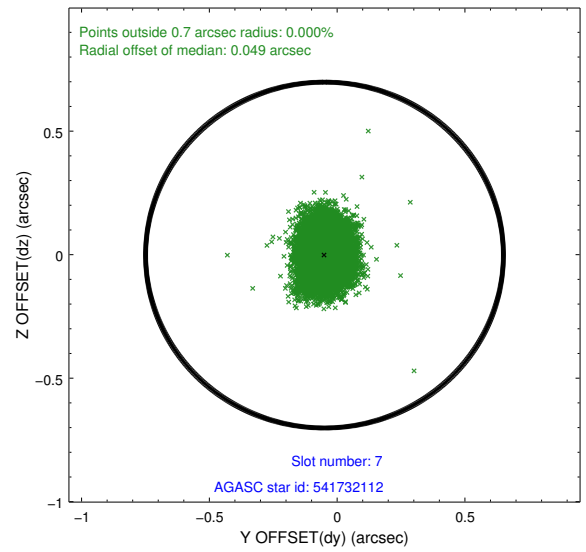
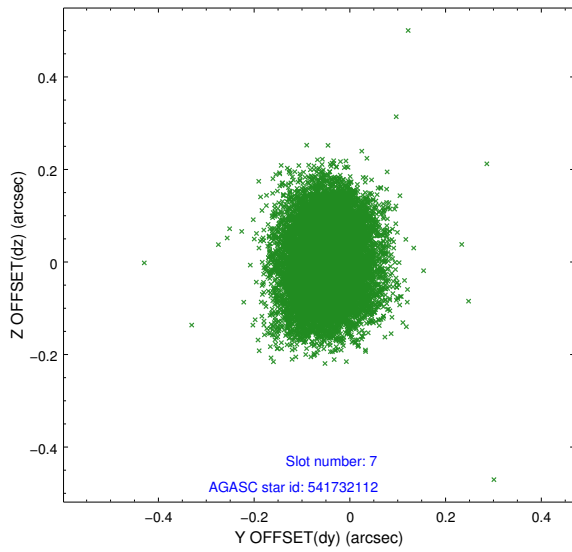
2.4.3 Slot 5



2.4.4 Slot 6

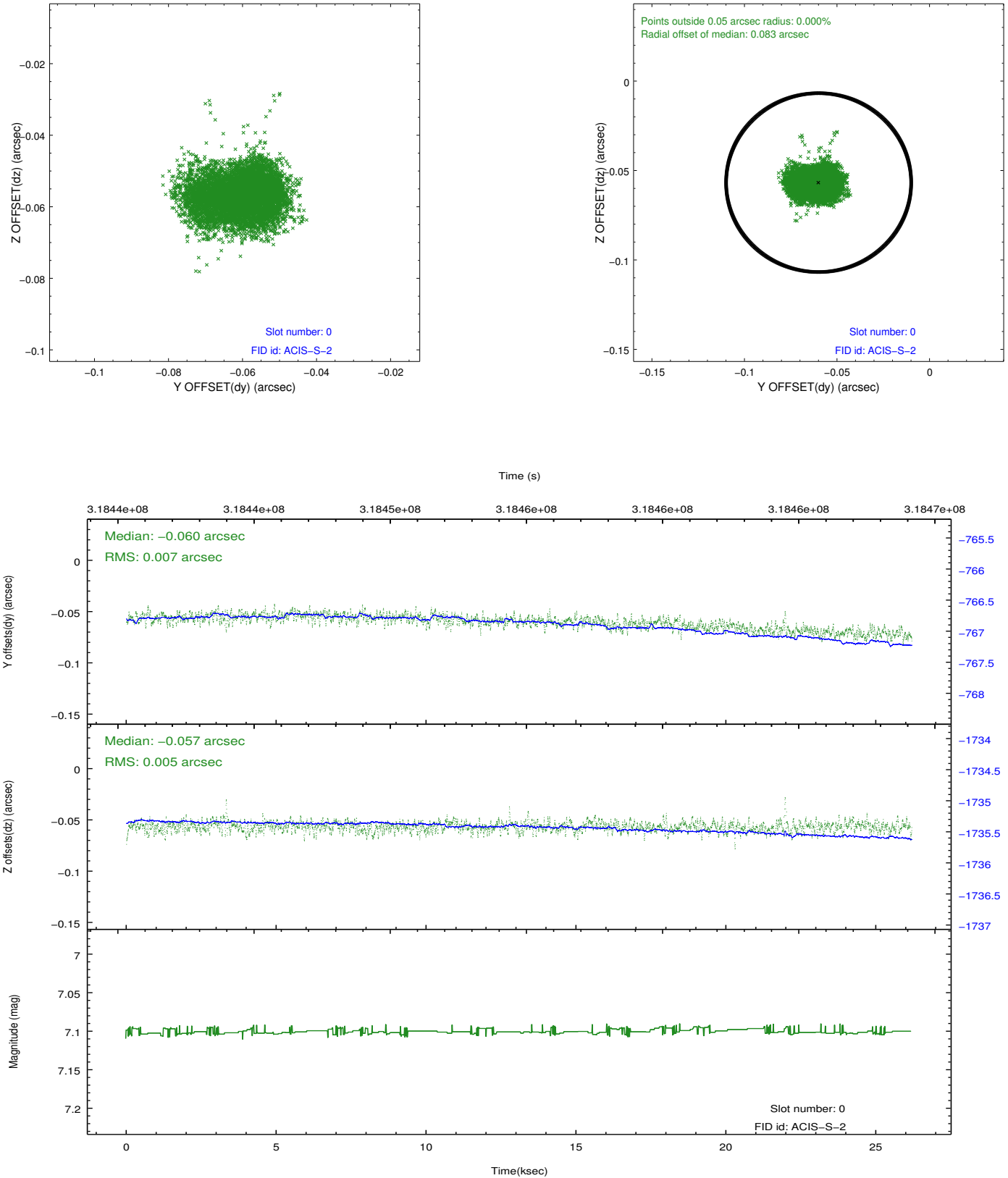


2.4.5 Slot 7

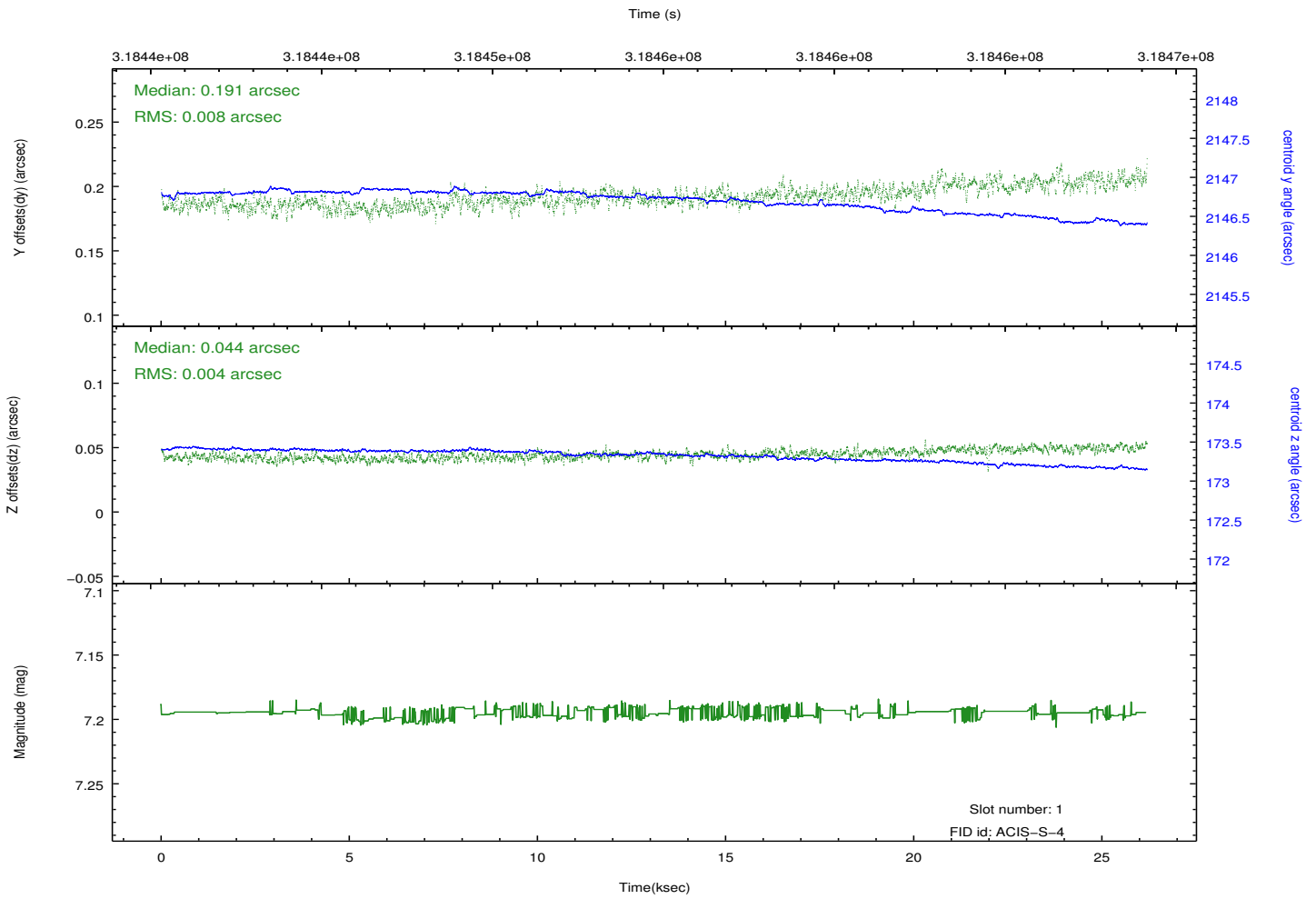
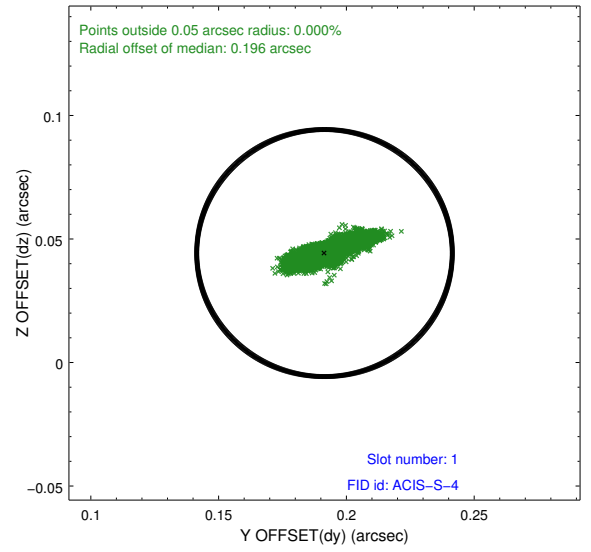
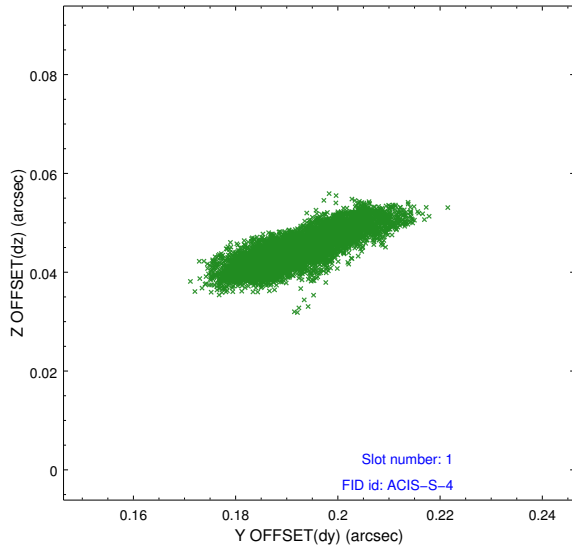


2.5 FID Slots

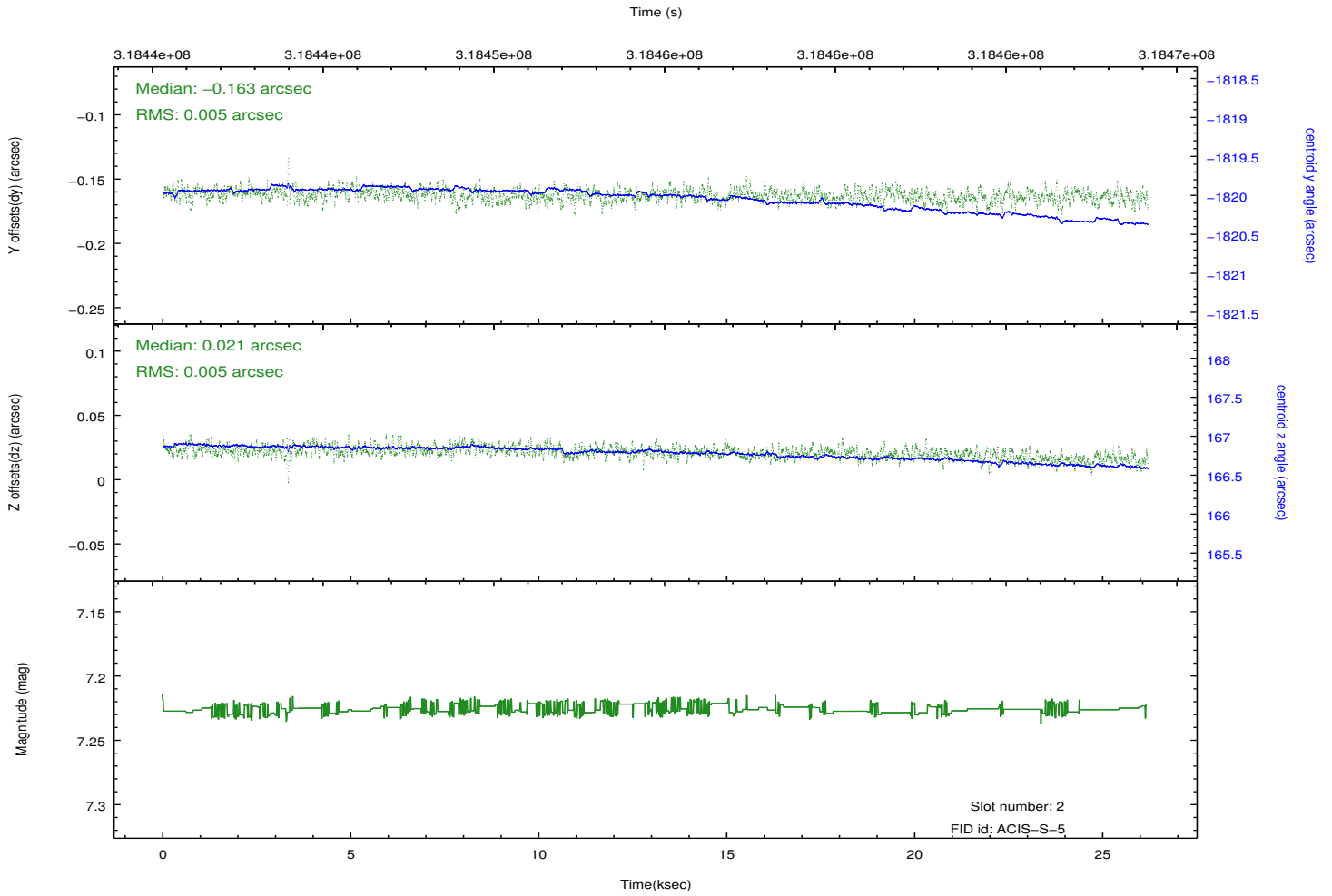
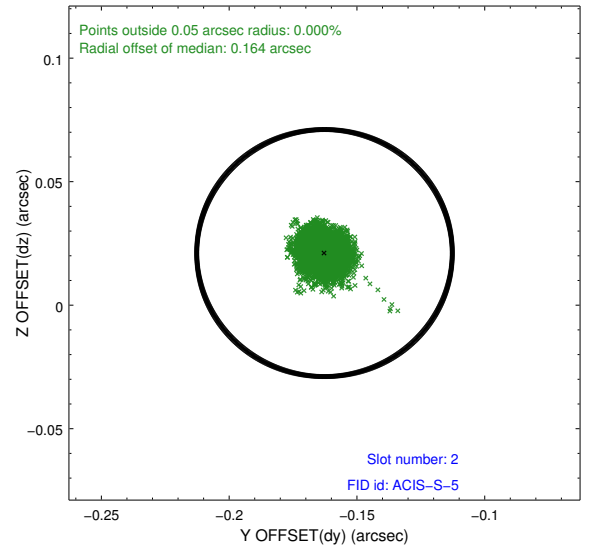
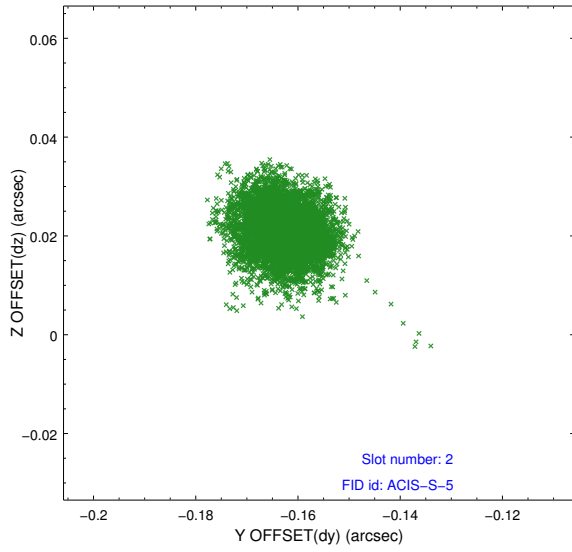
2.5.1 Slot 0



2.5.2 Slot 1



2.5.3 Slot 2



A Summary

A.1 Status

V&V Scientist	Jen Lauer
V&V Date (YYYY-MM-DD)	2012.05.10
V&V Edition	1
V&V Disposition and Status	OK
V&V Charge Time	26.1887999

A.2 Comments