

V&V Reference Report

L2 ASCDS Version : 8.4.4

Observation 9808 - L2 Version 2
Chandra X-Ray Center

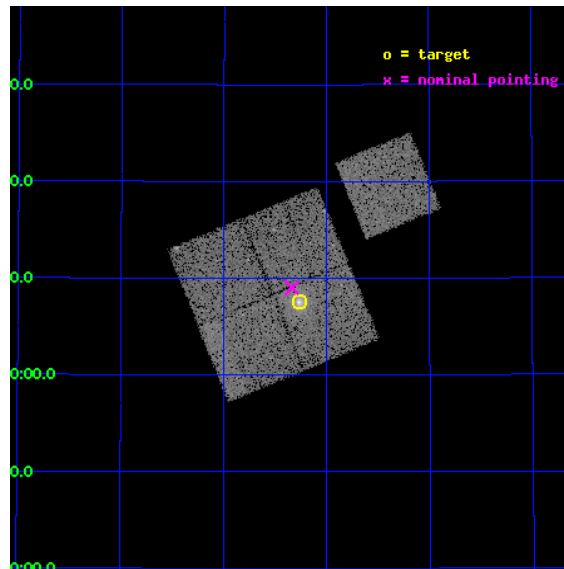
L2 Processing Date : May 8 2012

Contents

1	Front	2
2	OBI	3
2.1	OBI	3
2.1.1	Images	3
2.1.2	Bias	3
2.1.3	Parameters	4
2.1.4	Events	4
2.2	Compared Parameters	5
2.3	Aspect	6
2.4	Star Slots	9
2.4.1	Slot 3	9
2.4.2	Slot 4	10
2.4.3	Slot 5	11
2.4.4	Slot 6	12
2.4.5	Slot 7	13
2.5	FID Slots	14
2.5.1	Slot 0	14
2.5.2	Slot 1	15
2.5.3	Slot 2	16
A	Summary	17
A.1	Status	17
A.2	Comments	17

1 Front

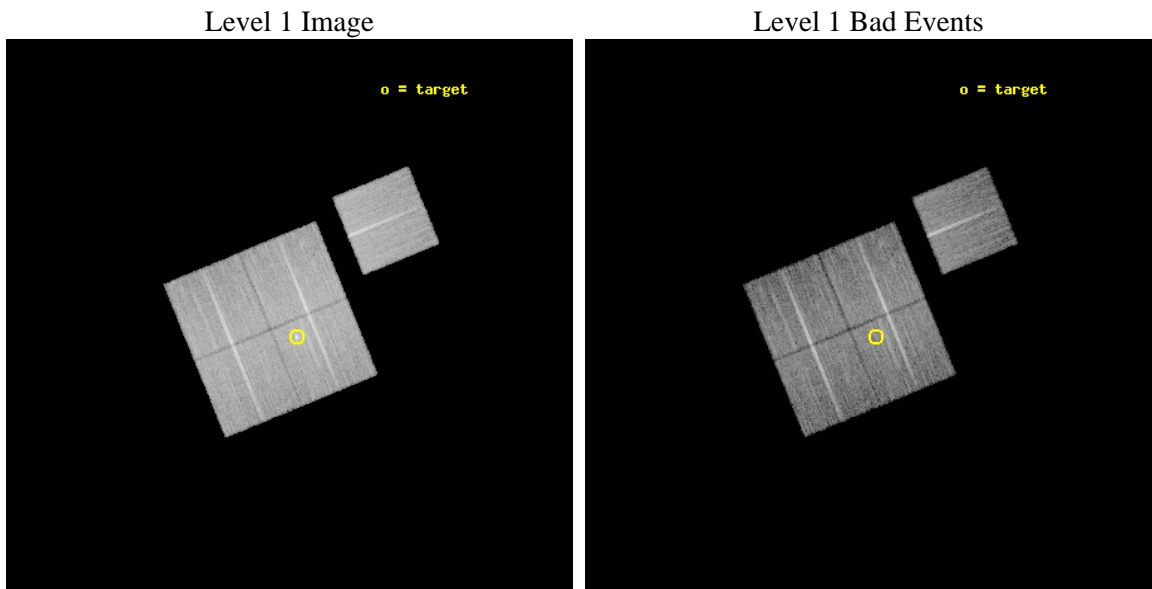
seq_num	800717	Sequence number
obs_id	9808	Observation id
title	Probing Dark Energy with Relaxed Galaxy Clusters	Proposal title
observer	Prof. Steven Allen	Principal investigator
object	MACS1427+44	Source name
dtcycle	0	
cycle	P	events from which exps? Prim/Second/Both
ra_targ	216.8175	Observer's specified target RA [deg]
dec_targ	44.125278	Observer's specified target Dec [deg]
ra_nom	216.83454594846	Nominal RA [deg]
dec_nom	44.150179566214	Nominal Dec [deg]
roll_nom	67.696839715072	Nominal Roll [deg]
revision	2	Processing version of data
ontime	15127.877135634	Sum of GTIs [s]
livetime	14930.220283876	Livetime [s]
ontime0	15134.15914613	Sum of GTIs [s]
ontime1	15127.877155602	Sum of GTIs [s]
ontime2	15121.595314562	Sum of GTIs [s]
ontime3	15127.877135634	Sum of GTIs [s]
ontime6	15134.159136117	Sum of GTIs [s]
l2events	53645	Number of level 2 events



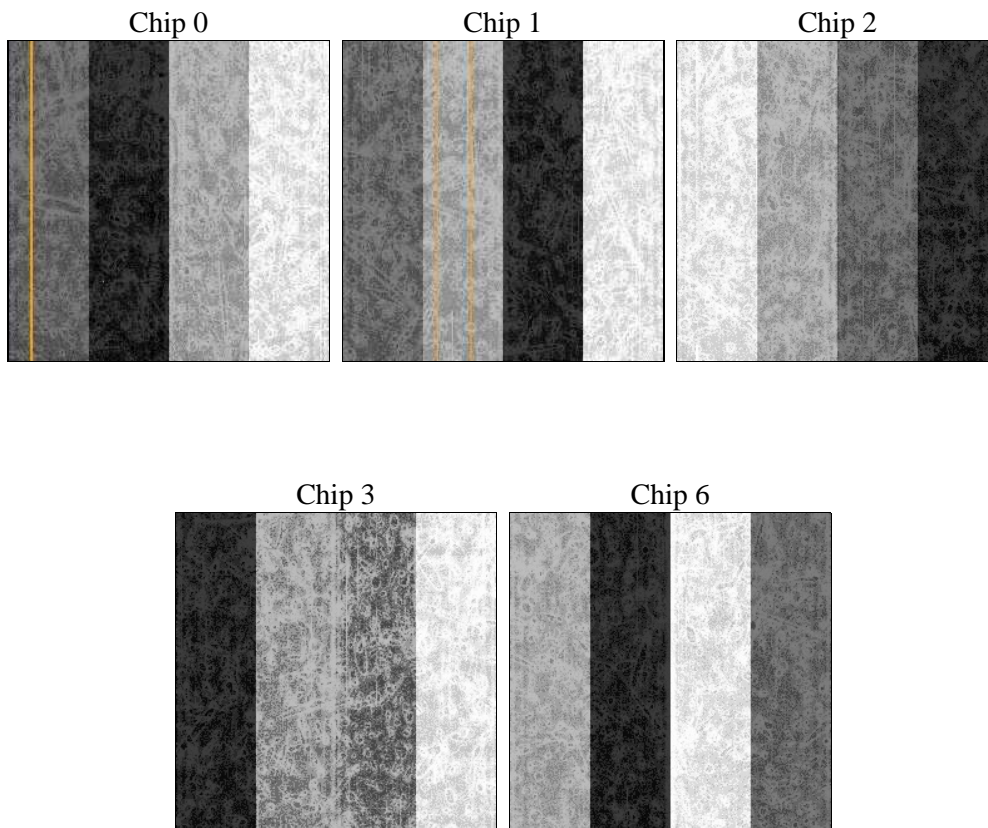
2 OBI

2.1 OBI

2.1.1 Images



2.1.2 Bias



2.1.3 Parameters

obi_num	0	Obi number	sched_exp_time	15000.000000	[s] Scheduled observation exposure time
ascdsver	8.4.4	Processing system revision	ontime	15127.877135634	Sum of GTIs [s]
caldbver	4.4.9	 	ontime0	15134.15914613	Sum of GTIs [s]
date	2012-05-08T02:14:19	Date and time of file creation	ontime1	15127.877155602	Sum of GTIs [s]
revision	2	Processing version of data	ontime2	15121.595314562	Sum of GTIs [s]
			ontime3	15127.877135634	Sum of GTIs [s]
			ontime6	15134.159136117	Sum of GTIs [s]
			l1events	589719	Number of level 1 events

2.1.4 Events

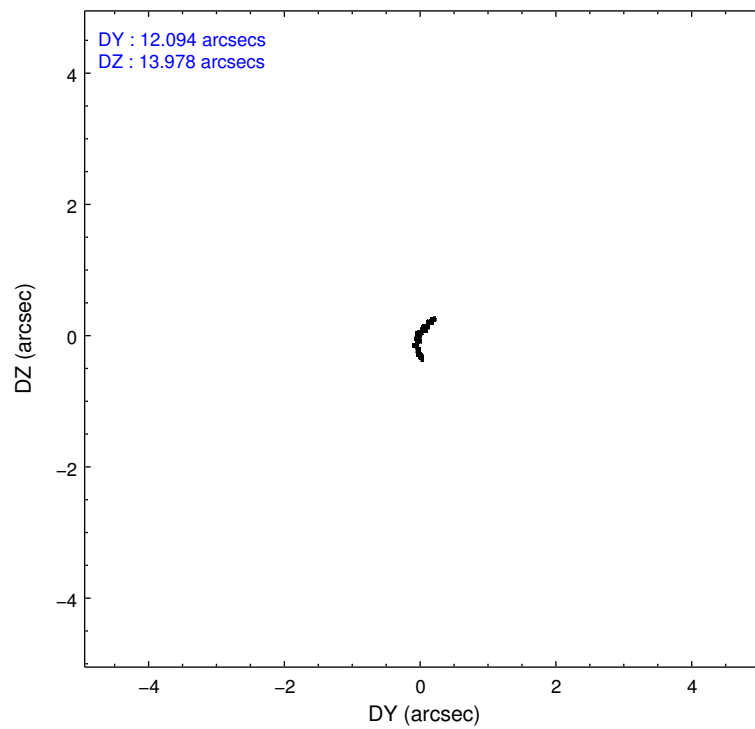
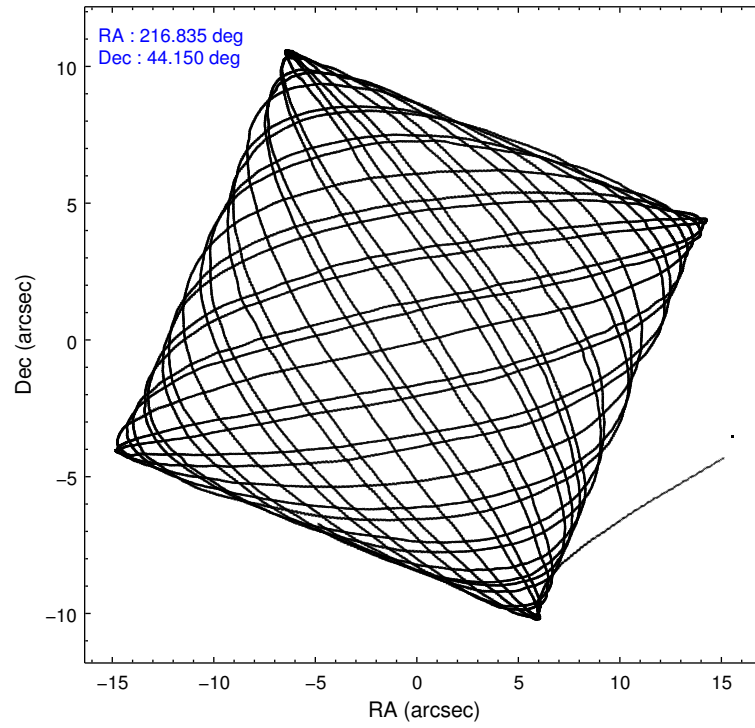
	ccd 0	ccd 1	ccd 2	ccd 3	ccd 6
level 1 events	110375	109806	126604	123263	119671
rejected events	98478	96349	114834	108598	107473
rejected %	89%	87%	90%	88%	89%

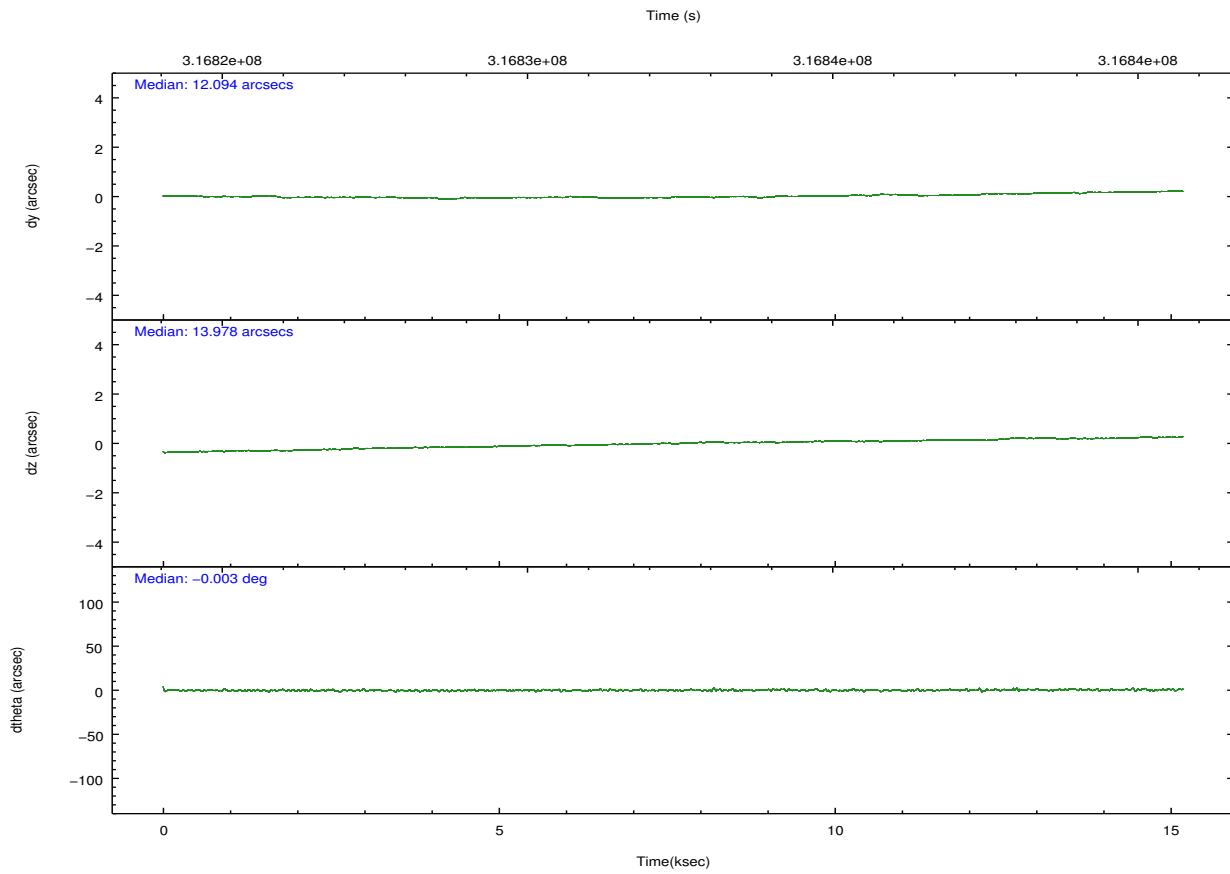
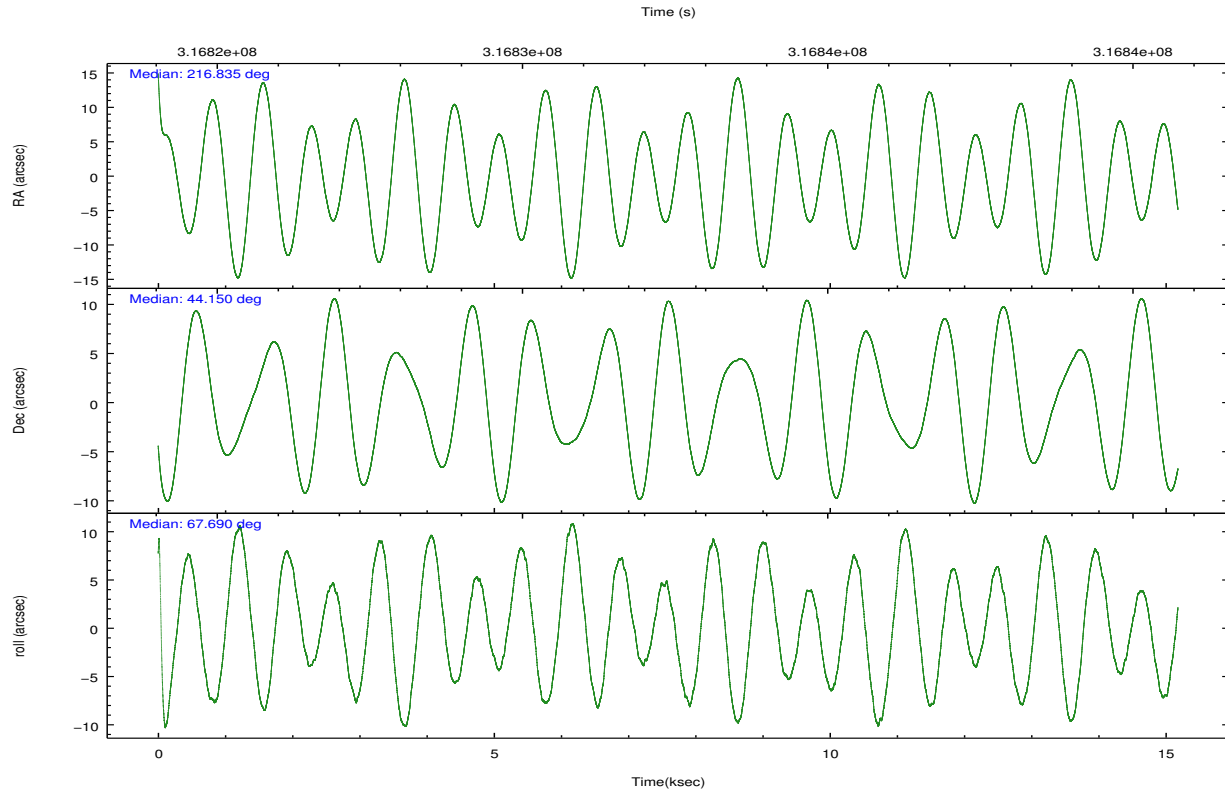
	ccd 0	ccd 1	ccd 2	ccd 3	ccd 6
grade 0 events	4222	4850	4260	6761	4197
	3%	4%	3%	5%	3%
grade 1 events	57	68	68	96	53
	0%	0%	0%	0%	0%
grade 2 events	2820	2976	2728	2766	2747
	2%	2%	2%	2%	2%
grade 3 events	1315	1471	1259	1402	1291
	1%	1%	0%	1%	1%
grade 4 events	1221	1449	1294	1314	1332
	1%	1%	1%	1%	1%
grade 5 events	4085	4667	3941	4964	4589
	3%	4%	3%	4%	3%
grade 6 events	2326	2727	2236	2425	2637
	2%	2%	1%	1%	2%
grade 7 events	94329	91598	110818	103535	102825
	85%	83%	87%	83%	85%

2.2 Compared Parameters

Parameter	Planned	Actual	Parameter	Planned	Actual
Instrument	ACIS	ACIS	Obspar format version number	7	7
Detector	ACIS-01236	ACIS-01236	Obspar file type	PREDICTED	ACTUAL
Grating	NONE	NONE	Obspar update status	NONE	UPDATED
Data mode	VFAINT	VFAINT	CCD I0 on	Y	Y
Observation mode	POINTING	POINTING	CCD I1 on	Y	Y
[deg] Pointing RA	216.839792	216.8345459484556	CCD I2 on	Y	Y
[deg] Pointing Dec	44.122974	44.15017956621362	CCD I3 on	Y	Y
[deg] Pointing Roll	67.484472	67.69683971507214	CCD S0 on	N	N
[mm] SIM focus pos	-0.782348	-0.7809083437167272	CCD S1 on	N	N
[mm] SIM defocus	0	0.001439871863259334	CCD S2 on	O1	Y
[mm] SIM translation stage pos	-229.442463	-229.4438428438578	CCD S3 on	N	N
[mm] SIM translation stage offset	-4.15	-4.148610159071865	CCD S4 on	N	N
[s] Observation start time (MET)	316824976.184000	316823999.85292	CCD S5 on	N	N
Observation start date	2008-01-15T22:55:11	2008-01-15T22:39:59	Number of optional ACIS chips dropped	0	0
[s] Observation end time (MET)	316839976.184000	316840379.86622	On-chip summing requested	N	N
Observation end date	2008-01-16T03:05:11	2008-01-16T03:12:59	Subarray requested	NONE	NONE
Read mode	TIMED	TIMED	Alternating exposures requested	N	N
			[s] Primary exposure time	0.000000	3.1

2.3 Aspect



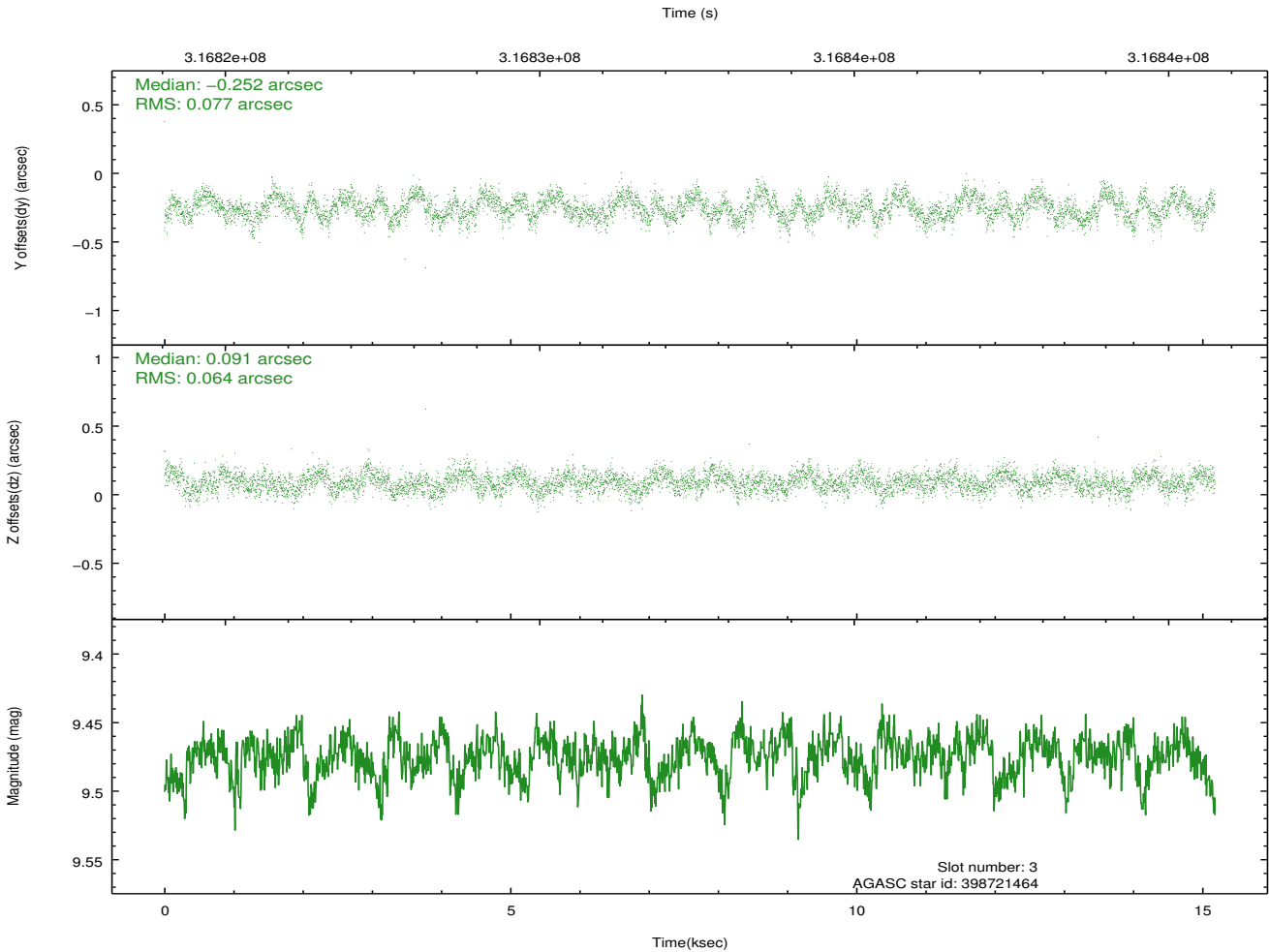
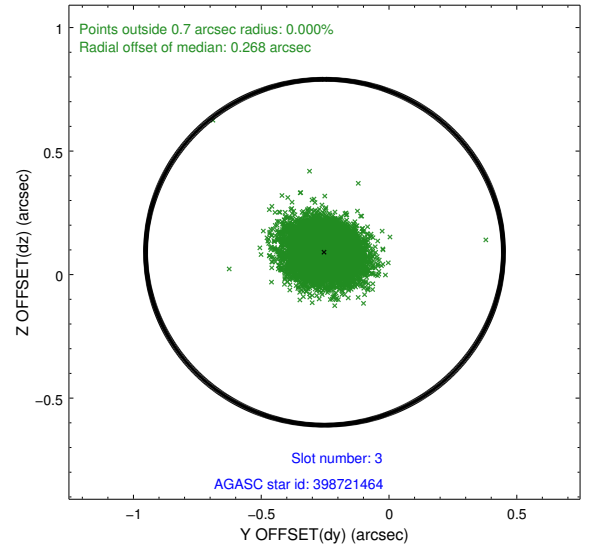
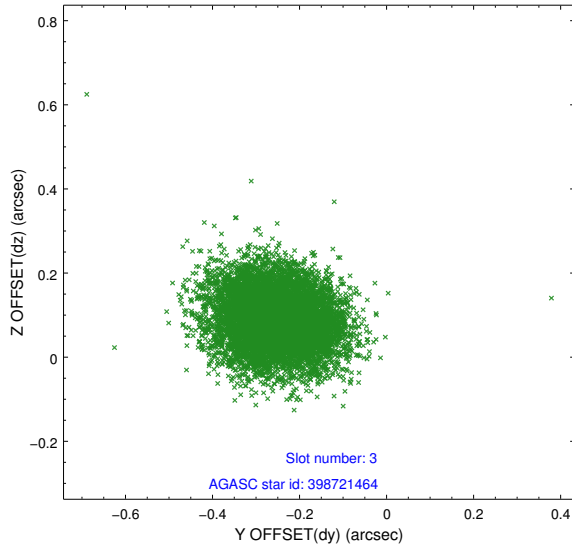


Slot Statistics

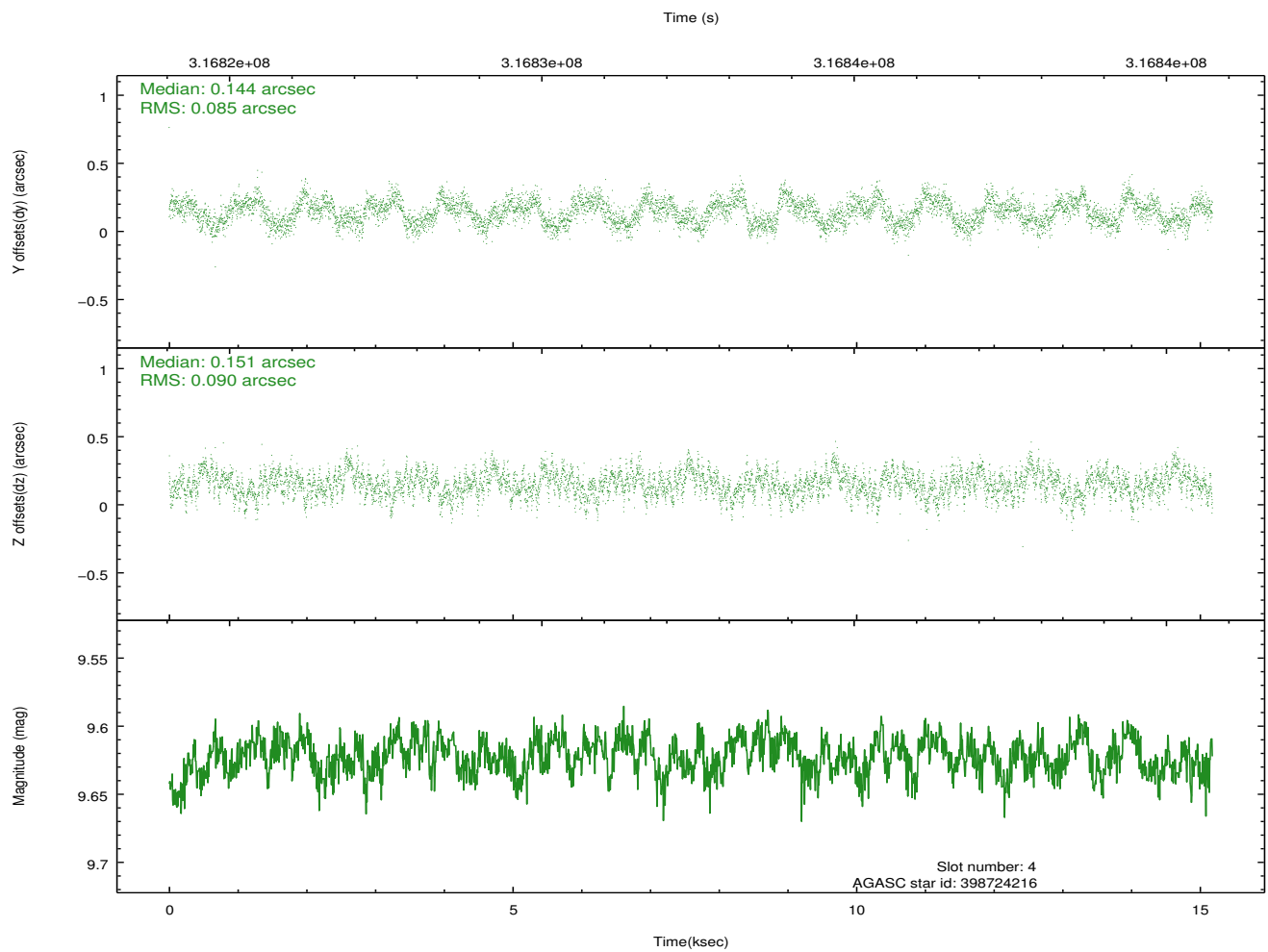
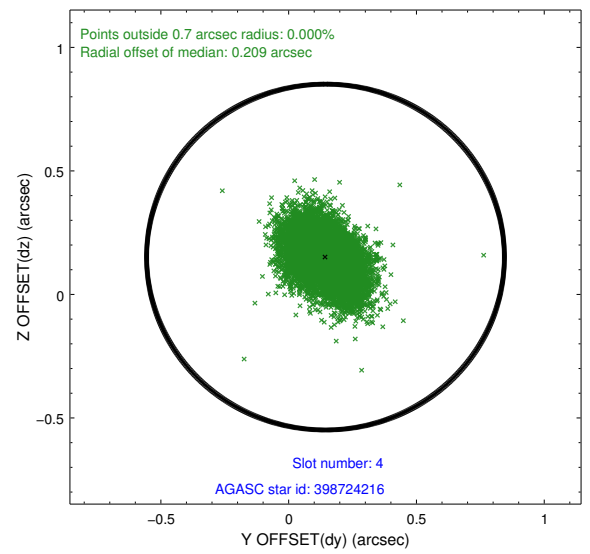
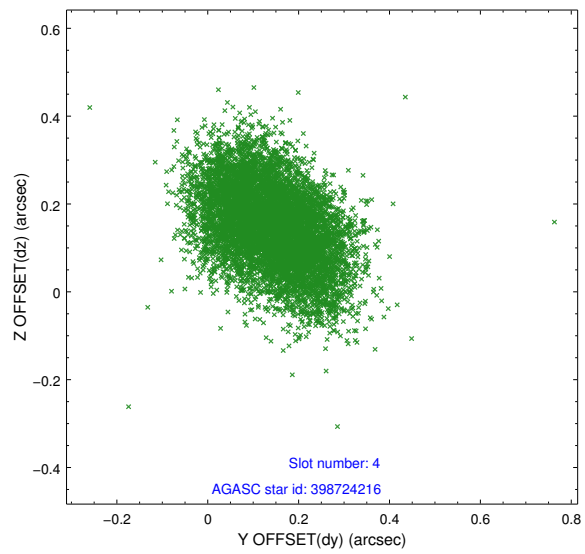
slot	status	id	mag	n_pts	med_dy	med_dz	dr1	dr2	ra	dec	mean_y	mean_z
0	FID	ACIS-I-2	7.16	3701	-0.101	-0.089	0.009	0.016	0.000000	0.000000	-767.13	-928.55
1	FID	ACIS-I-4	7.14	3702	0.169	0.084	0.006	0.012	0.000000	0.000000	2147.01	977.63
2	FID	ACIS-I-5	7.22	3702	-0.169	0.074	0.009	0.015	0.000000	0.000000	-1820.46	975.23
3	GUIDE	398721464	9.47	7385	-0.252	0.091	0.108	0.169	217.791139	44.290387	1509.07	-2028.02
4	GUIDE	398724216	9.62	7392	0.144	0.151	0.131	0.211	216.907325	43.952017	-501.31	-397.94
5	GUIDE	398724320	9.58	7390	0.112	0.039	0.152	0.230	217.327713	43.656759	-1059.67	-1815.24
6	GUIDE	398727024	9.59	7399	0.104	0.030	0.115	0.182	217.158424	44.398345	1232.69	-375.05
7	GUIDE	398593544	8.61	7398	-0.103	-0.308	0.075	0.118	216.095119	44.392456	170.60	2144.20

2.4 Star Slots

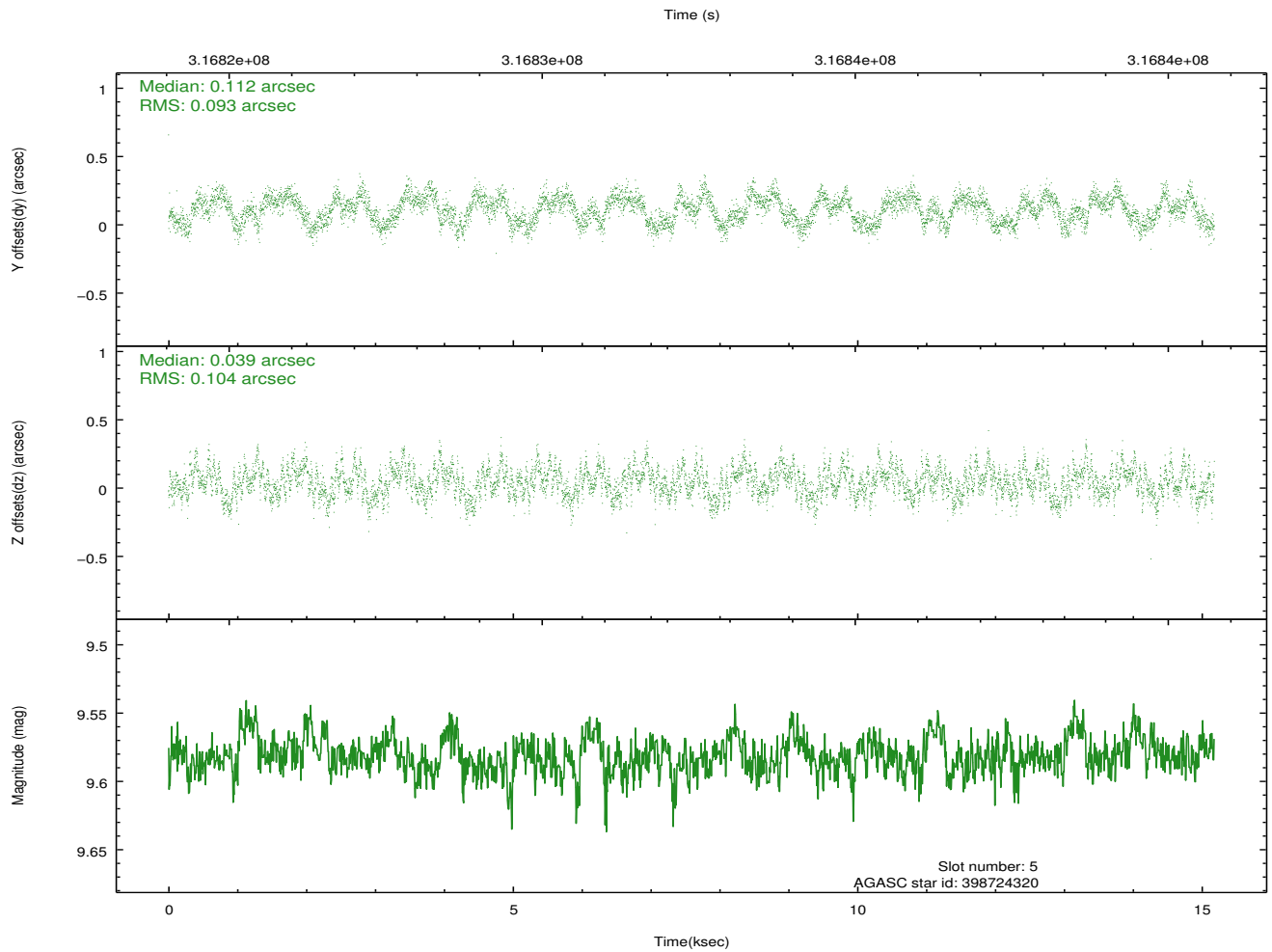
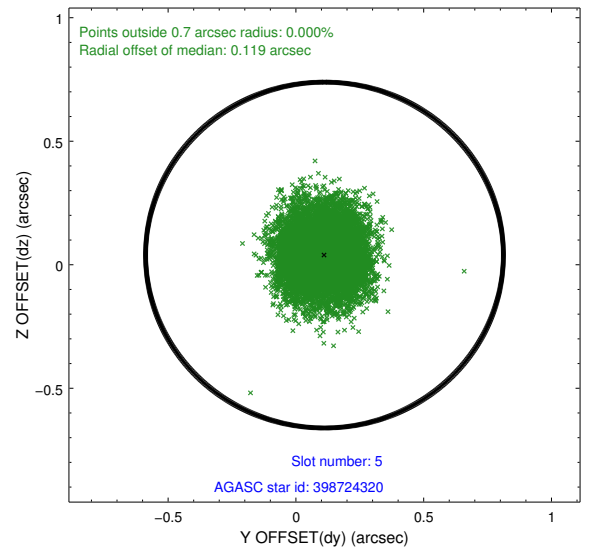
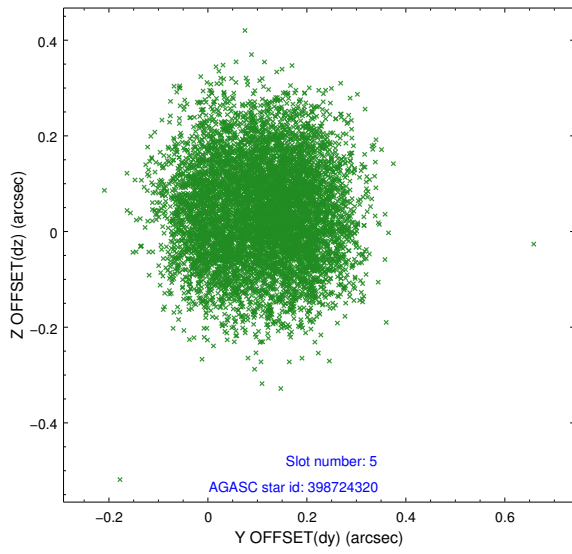
2.4.1 Slot 3



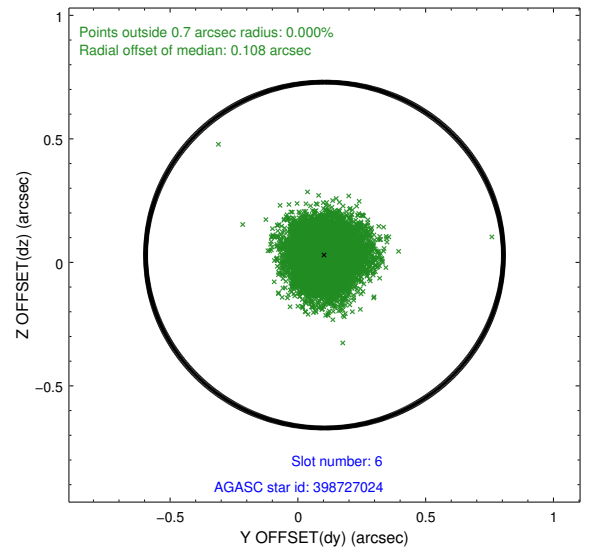
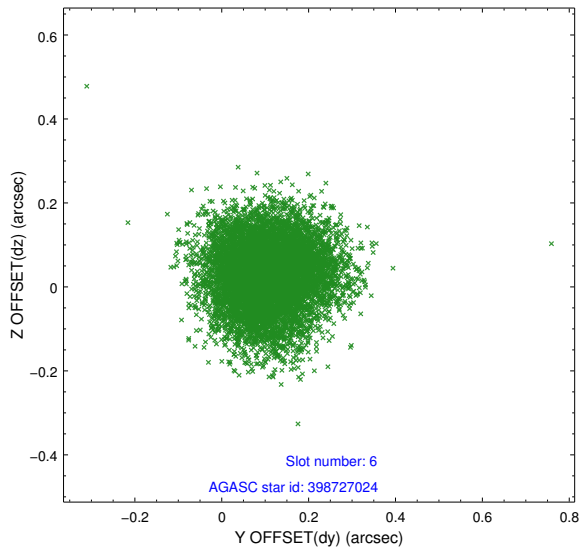
2.4.2 Slot 4



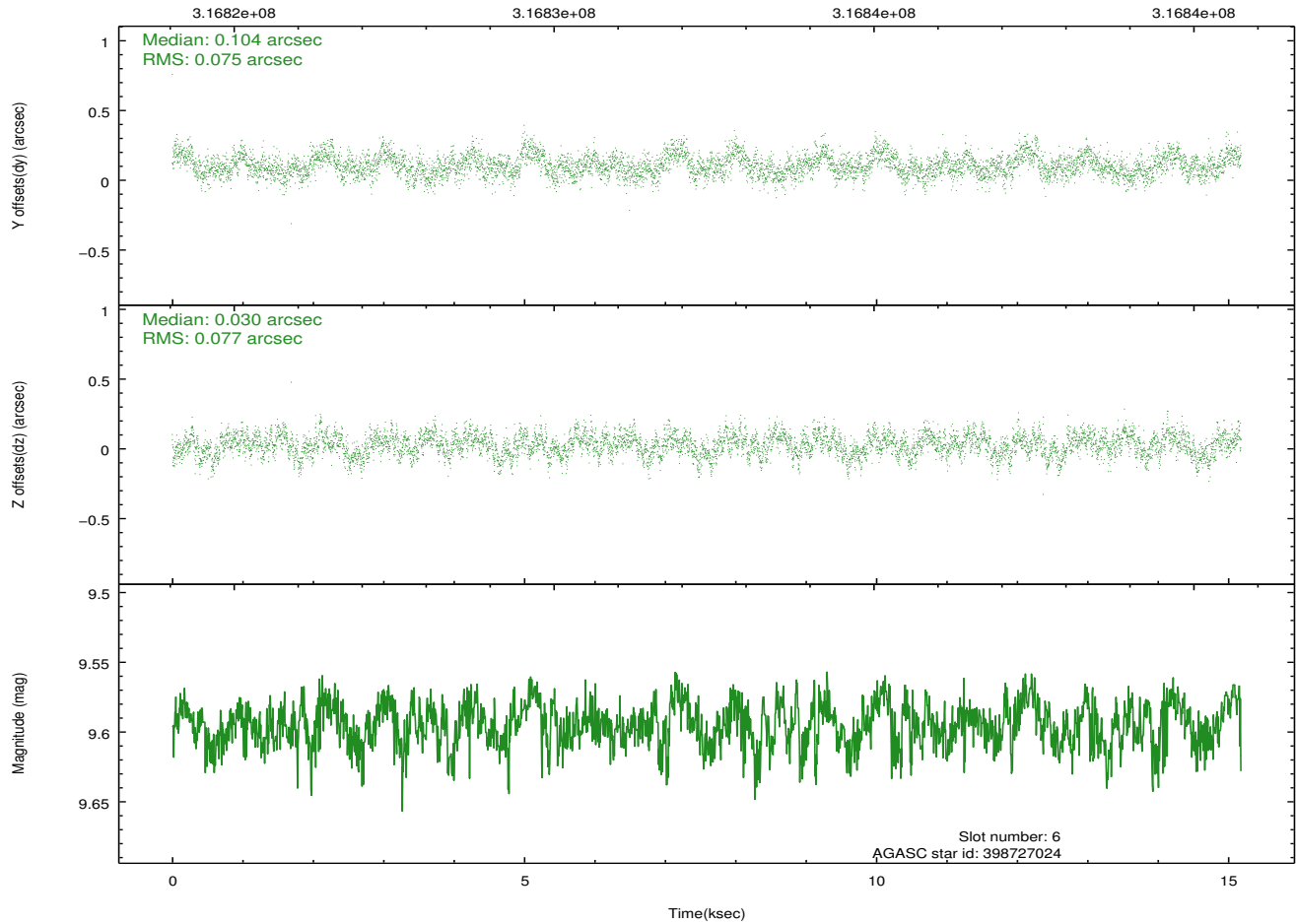
2.4.3 Slot 5



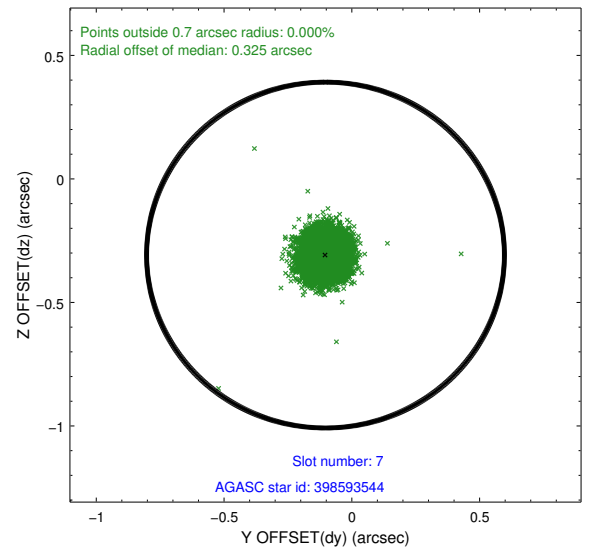
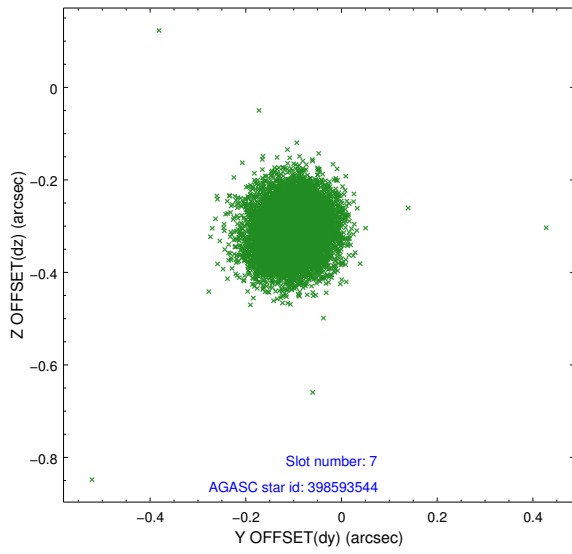
2.4.4 Slot 6



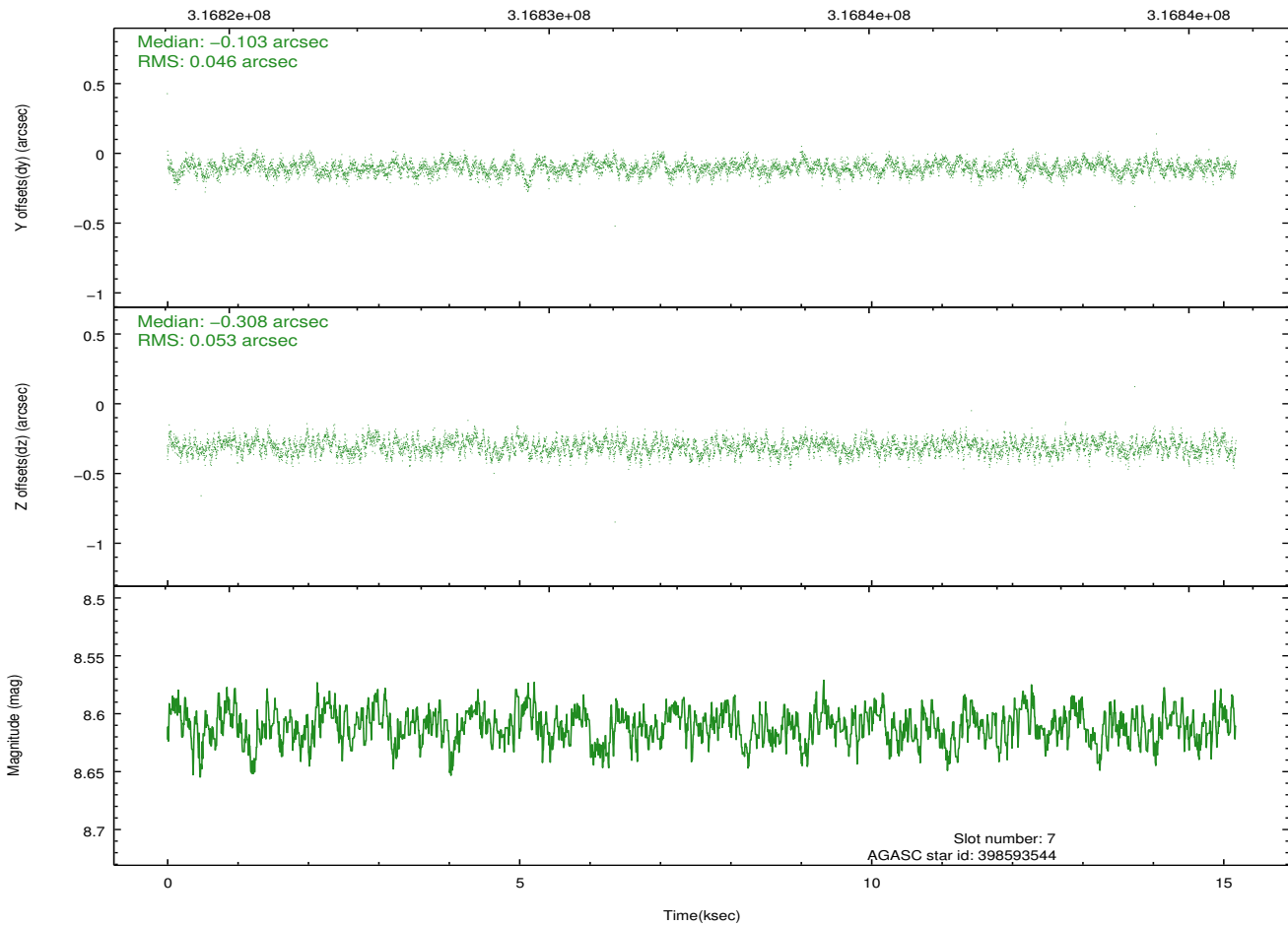
Time (s)



2.4.5 Slot 7

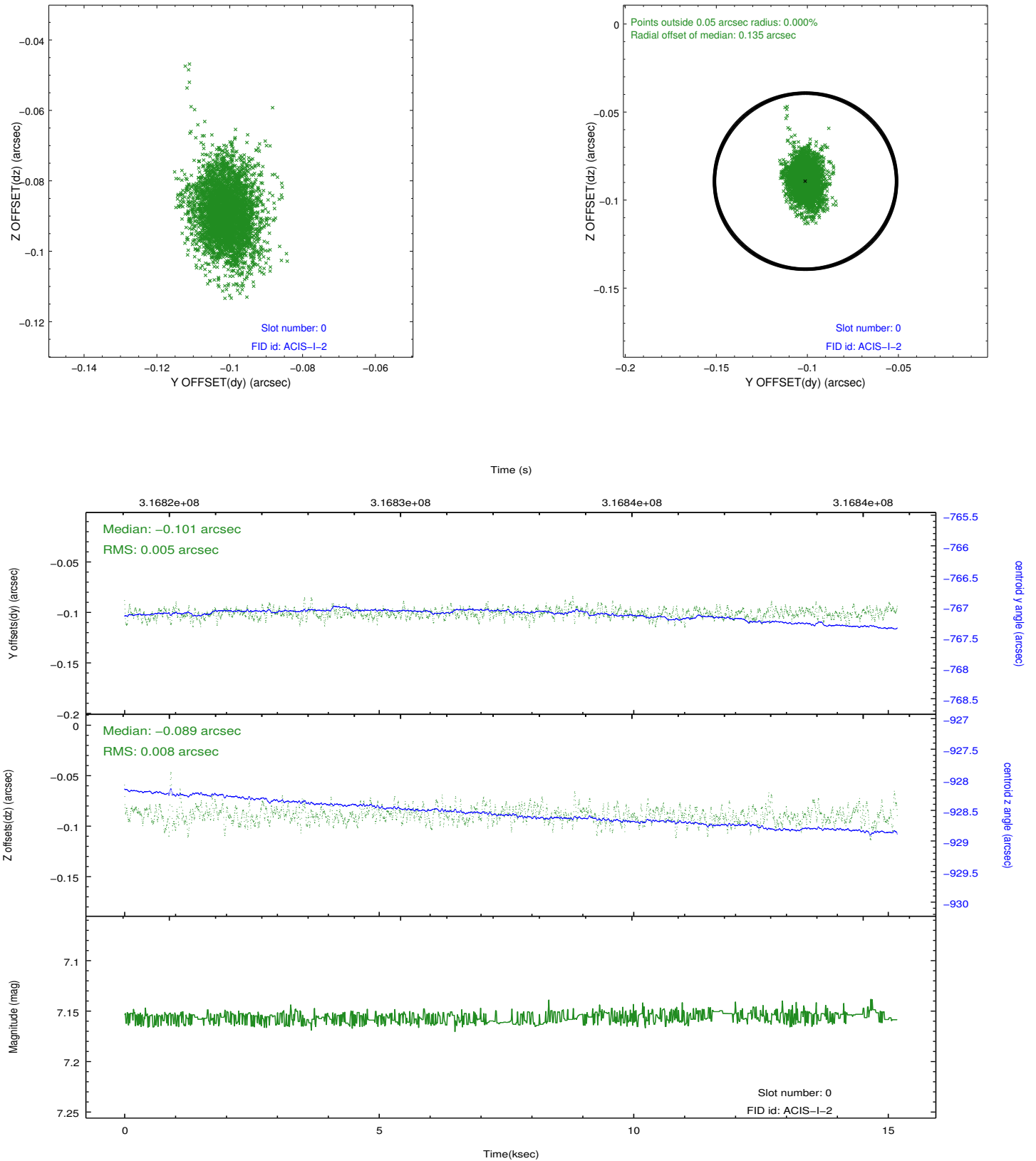


Time (s)

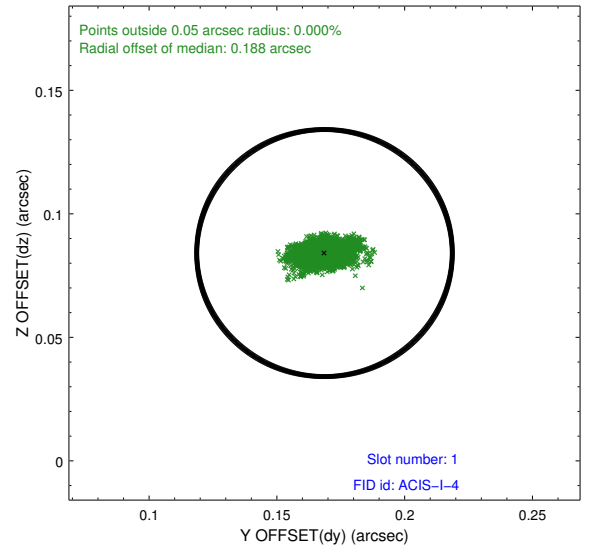
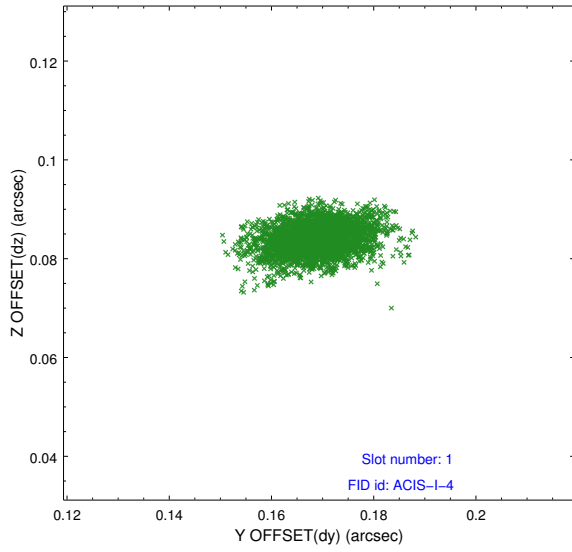


2.5 FID Slots

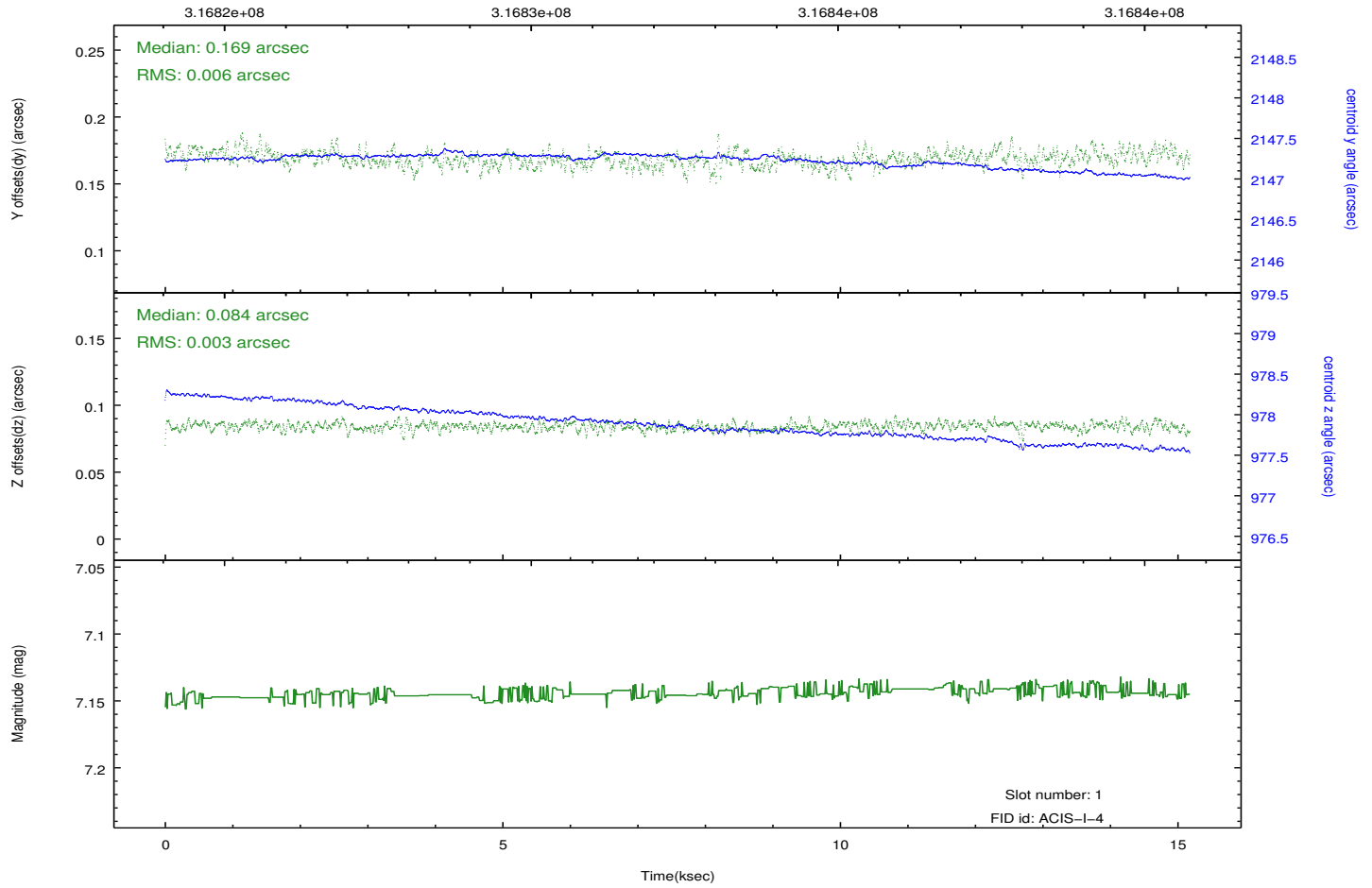
2.5.1 Slot 0



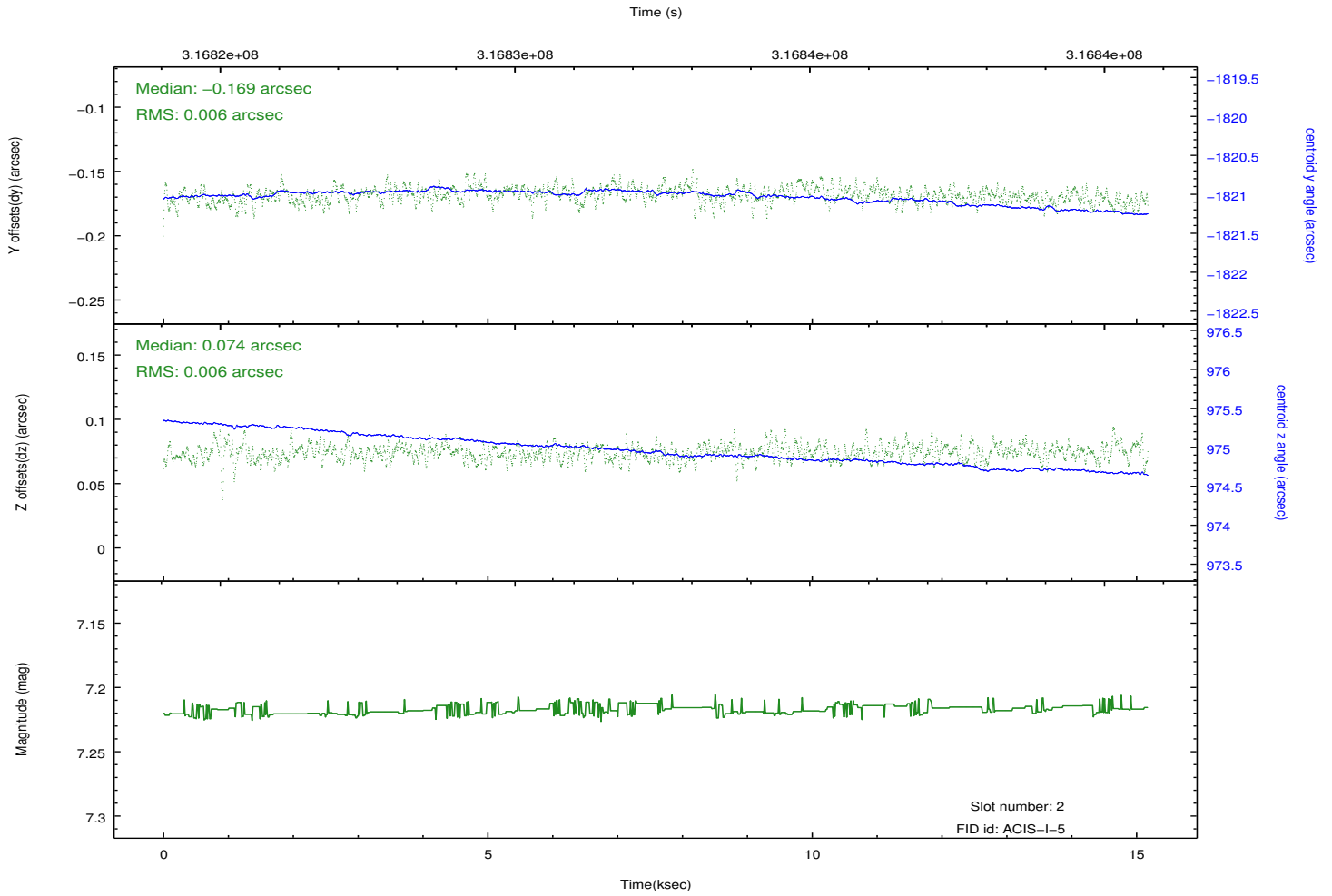
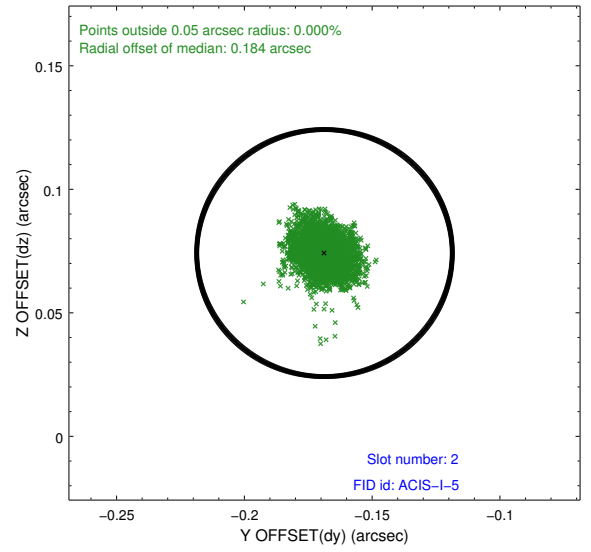
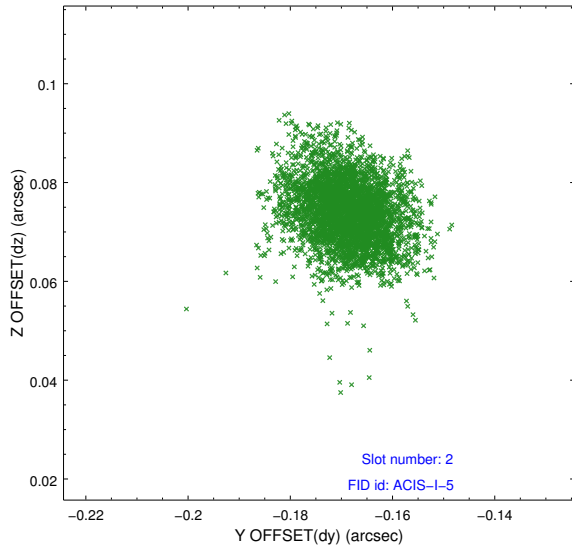
2.5.2 Slot 1



Time (s)



2.5.3 Slot 2



A Summary

A.1 Status

V&V Scientist	Jen Lauer
V&V Date (YYYY-MM-DD)	2012.05.10
V&V Edition	1
V&V Disposition and Status	OK
V&V Charge Time	15.1278771

A.2 Comments