

# V&V Reference Report

## L2 ASCDS Version : 8.4.4

Observation 9828 - L2 Version 3  
Chandra X-Ray Center

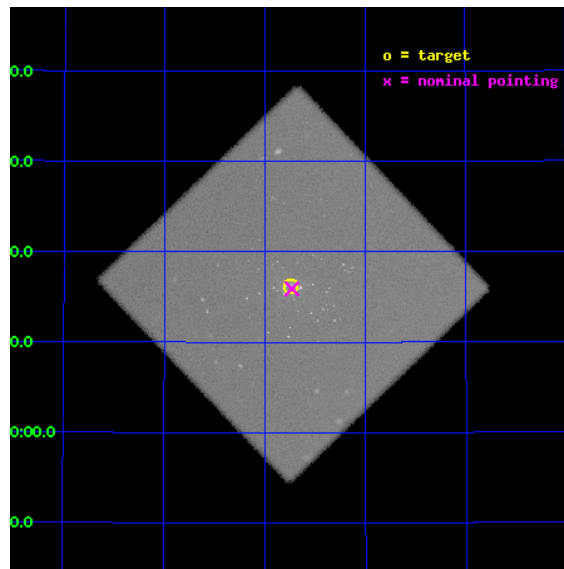
L2 Processing Date : Aug 13 2012

## Contents

<b>1</b>	<b>Front</b>	<b>2</b>
<b>2</b>	<b>OBI</b>	<b>3</b>
2.1	OBI . . . . .	3
2.1.1	Images . . . . .	3
2.1.2	Parameters . . . . .	4
2.1.3	Events . . . . .	4
2.2	Compared Parameters . . . . .	5
2.3	Aspect . . . . .	6
2.4	Star Slots . . . . .	9
2.4.1	Slot 3 . . . . .	9
2.4.2	Slot 4 . . . . .	10
2.4.3	Slot 5 . . . . .	11
2.4.4	Slot 6 . . . . .	12
2.4.5	Slot 7 . . . . .	13
2.5	FID Slots . . . . .	14
2.5.1	Slot 0 . . . . .	14
2.5.2	Slot 1 . . . . .	15
2.5.3	Slot 2 . . . . .	16
<b>A</b>	<b>Summary</b>	<b>17</b>
A.1	Status . . . . .	17
A.2	Comments . . . . .	17

# 1 Front

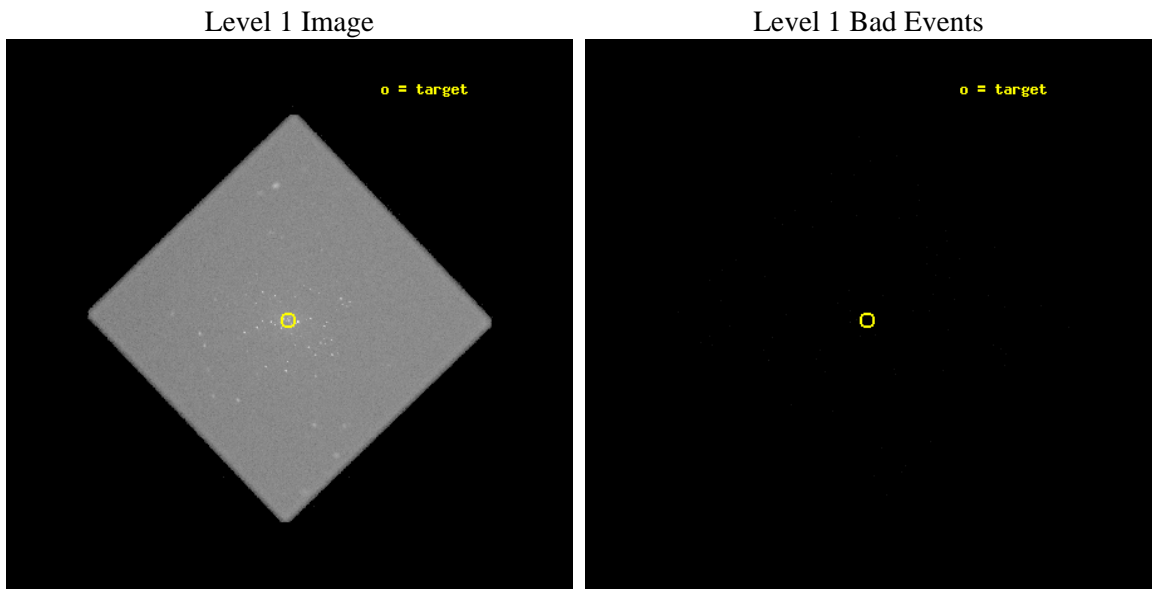
seq_num	300236	Sequence number
obs_id	9828	Observation id
title	Resolving short supersoft source states of optical novae in the core of M31	Proposal title
observer	Dr. Wolfgang Pietsch	Principal investigator
object	M31	Source name
ra_targ	10.684583	Observer's specified target RA [deg]
dec_targ	41.269278	Observer's specified target Dec [deg]
ra_nom	10.682572244555	Nominal RA [deg]
dec_nom	41.265342102559	Nominal Dec [deg]
roll_nom	271.22228210462	Nominal Roll [deg]
revision	3	Processing version of data
ontime	20187.632247984	[s]
livetime	19967.453324036	Ontime multiplied by DTCOR
l2events	1352871	Number of level 2 events



## 2 OBI

### 2.1 OBI

#### 2.1.1 Images



### 2.1.2 Parameters

obi_num	0	Obi number	sched_exp_time	20000.000000	[s] Scheduled observation exposure time
ascdsver	8.4.5	Processing system revision	ontime	20187.632247984	[s]
caldbver	4.5.1.1	&#160	l1events	2017167	Number of level 1 events
date	2012-08-12T23:36:09	Date and time of file creation			
revision	3	Processing version of data			

### 2.1.3 Events

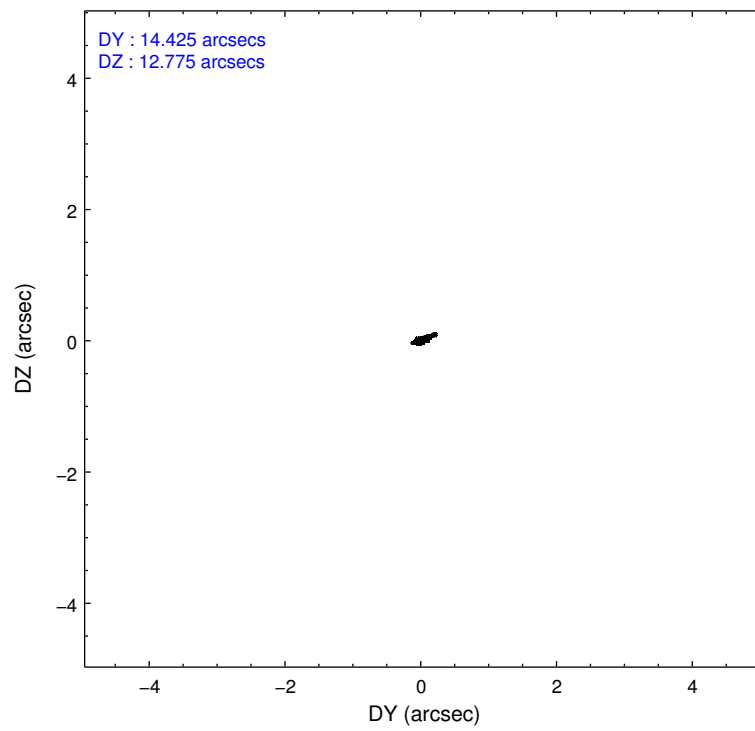
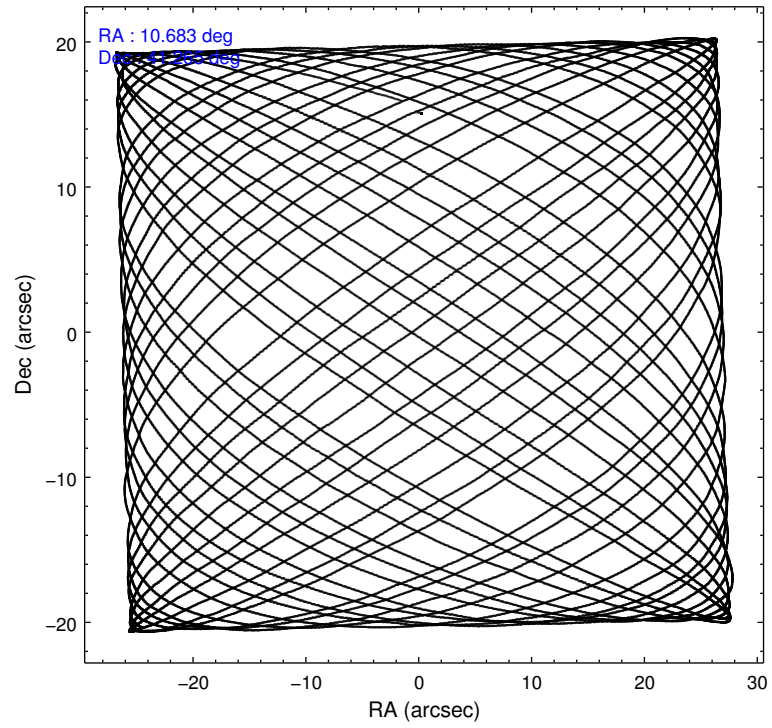
#### Level 1 Events

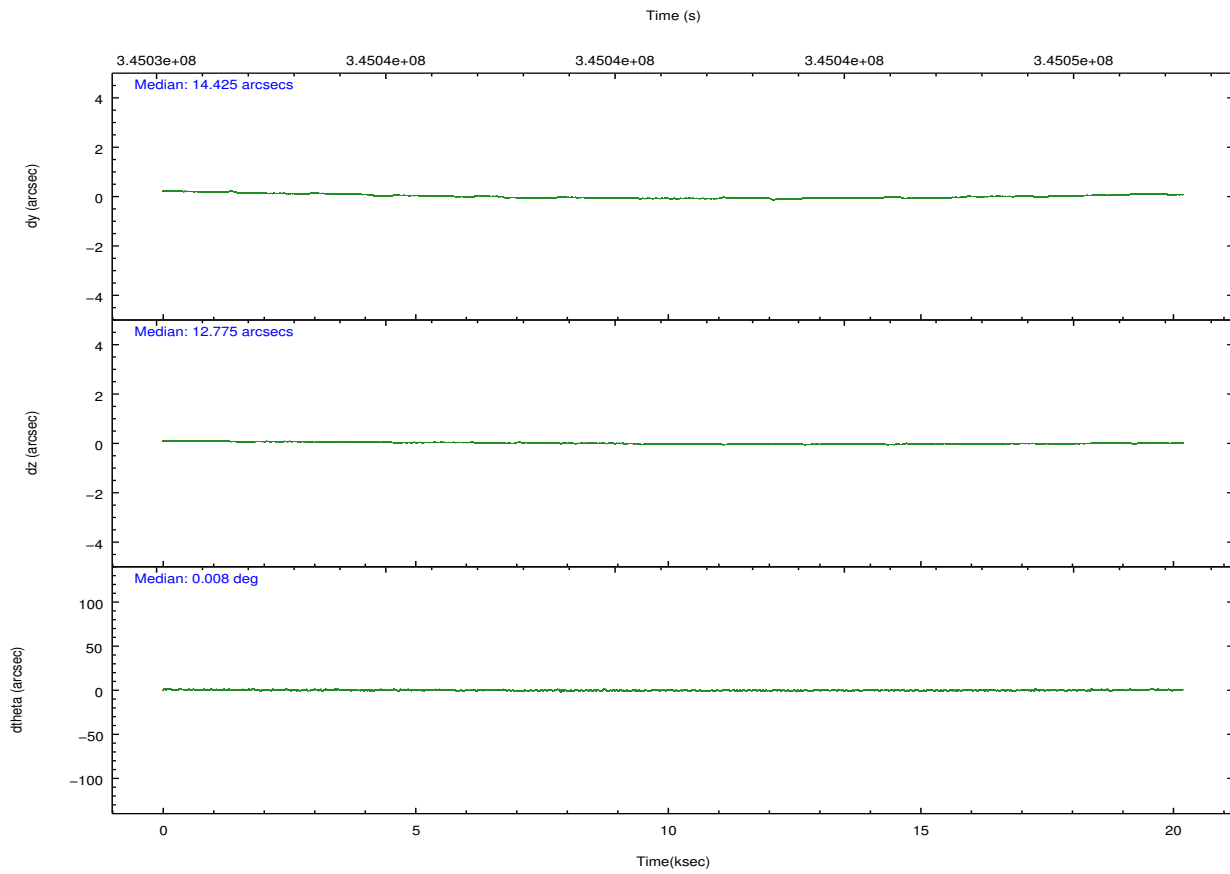
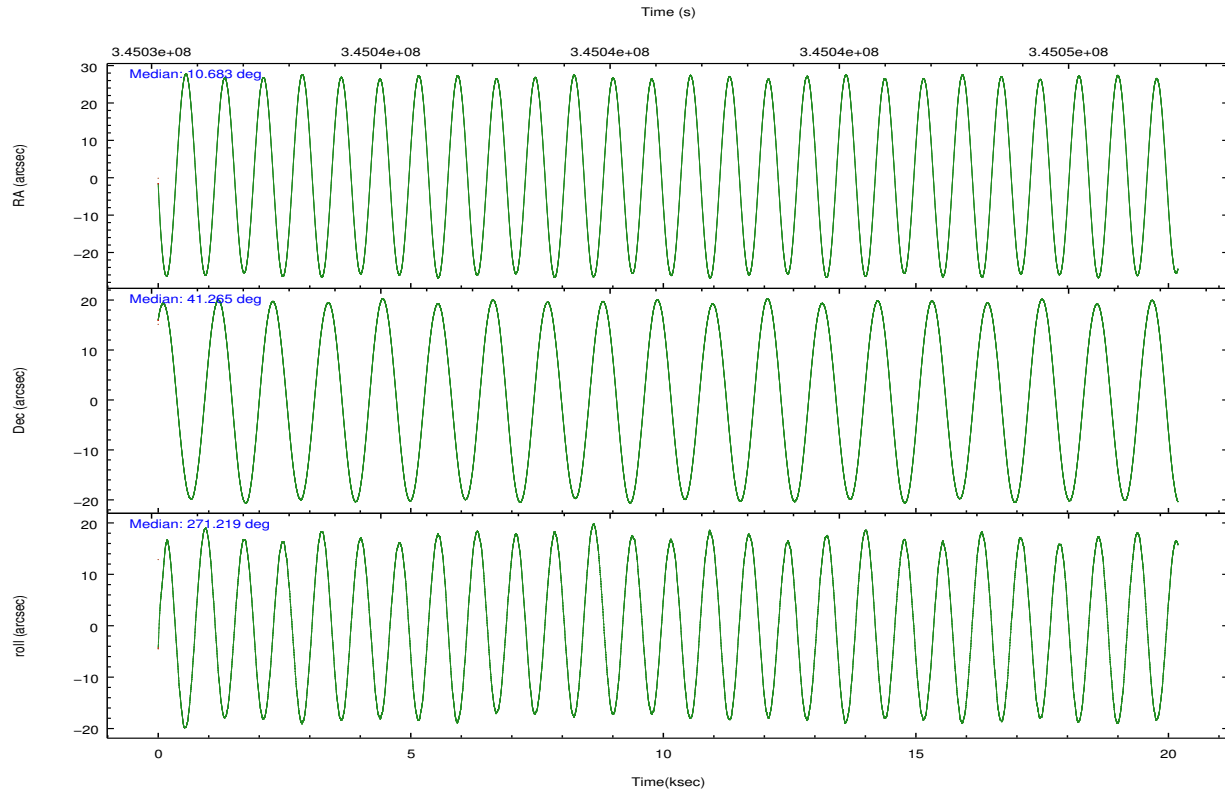
	<b>segment 0</b>
level 1 events	2017167
rejected events	58645
rejected %	2%

## 2.2 Compared Parameters

Parameter	Planned	Actual	Parameter	Planned	Actual
Instrument	HRC	HRC	Obspar format version number	7	7
Detector	HRC-I	HRC-I	Obspar file type	PREDICTED	ACTUAL
Grating	NONE	NONE	Obspar update status	NONE	UPDATED
Data mode	OBSERVING	OBSERVING			
Observation mode	POINTING	POINTING			
[deg] Pointing RA	10.663156	10.68257224455504			
[deg] Pointing Dec	41.288245	41.26534210255926			
[deg] Pointing Roll	271.330578	271.222282104618			
[s] Window start time (MET)	344995265.184000	344995265.184000			
[s] Window stop time (MET)	345254405.184000	345254405.184000			
[mm] SIM focus pos	-1.040293	-1.038866356238299			
[mm] SIM defocus	0	0.001426264420575141			
[mm] SIM translation stage pos	126.985494	126.9854943052878			
[mm] SIM translation stage offset	0	-5.413686238853188e-06			
[s] Observation start time (MET)	345031356.184000	345030570.61762			
Observation start date	2008-12-07T10:01:31	2008-12-07T09:49:30			
[s] Observation end time (MET)	345051356.184000	345052117.65619			
Observation end date	2008-12-07T15:34:51	2008-12-07T15:48:37			

## 2.3 Aspect



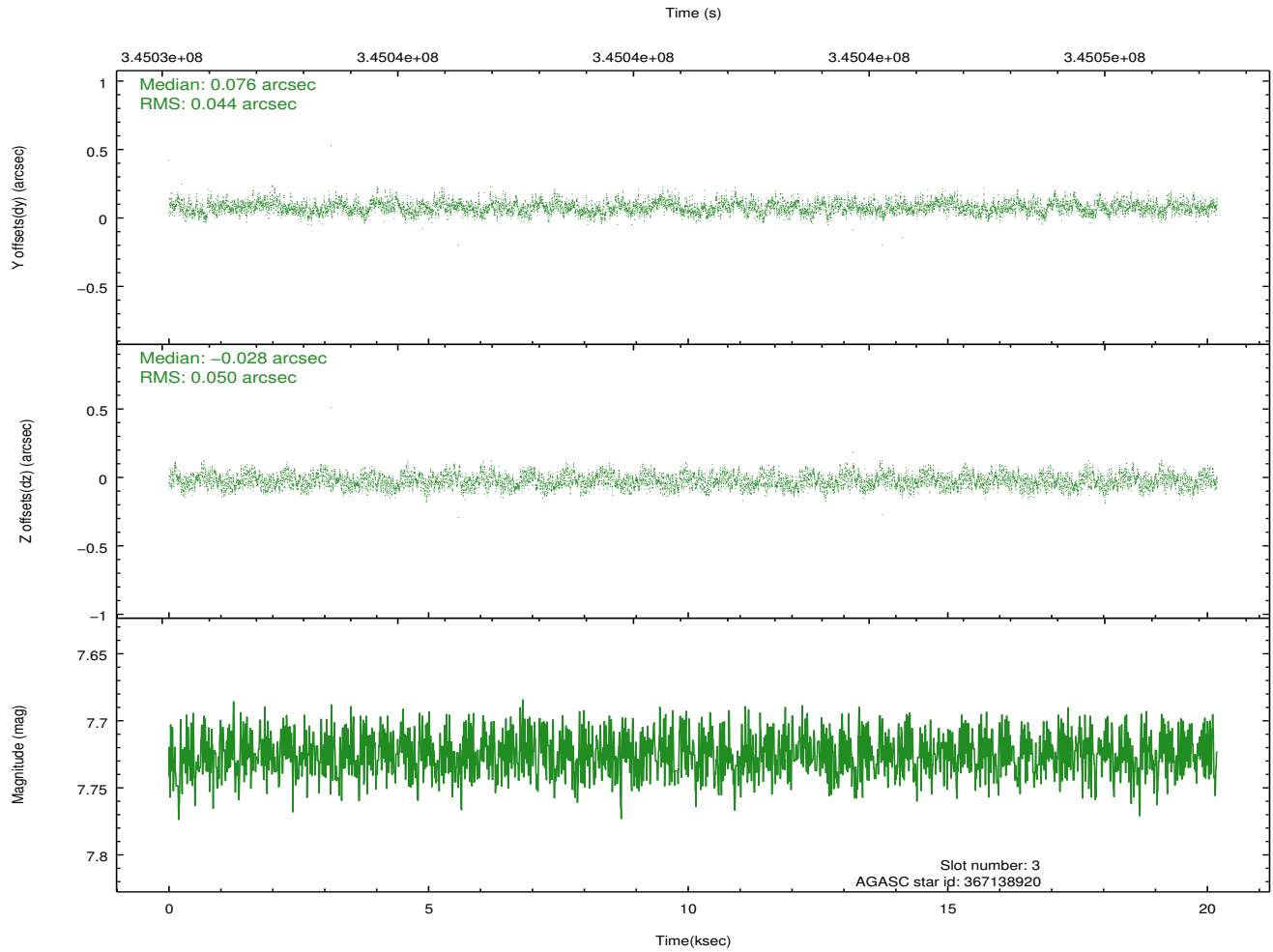
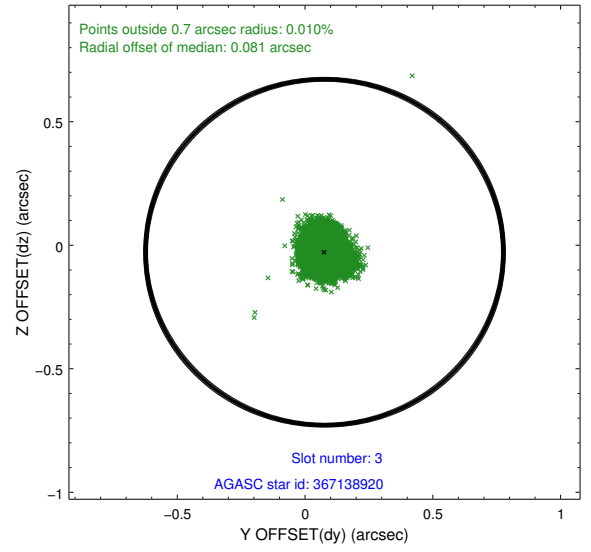
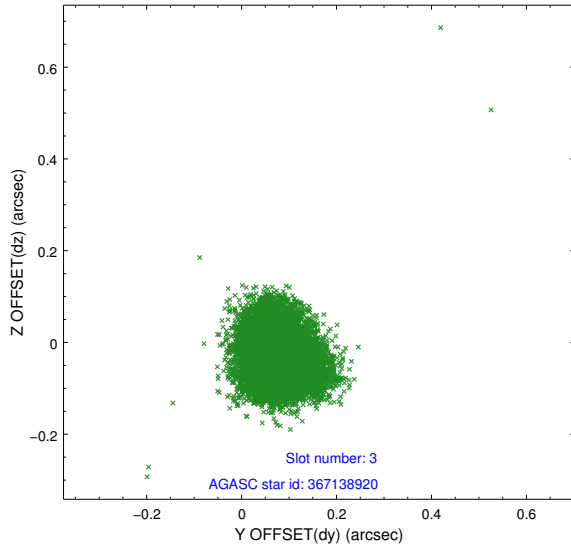


### Slot Statistics

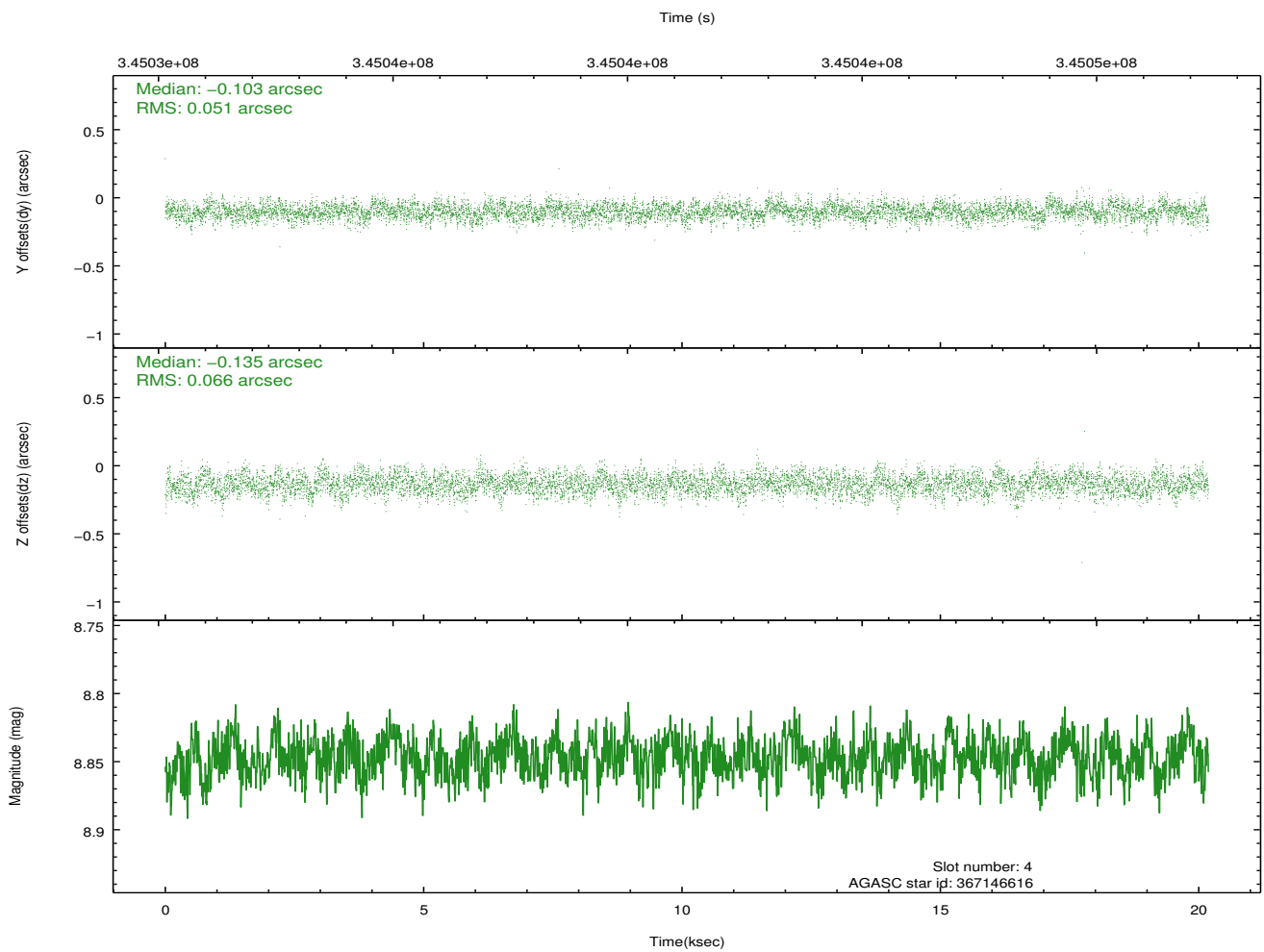
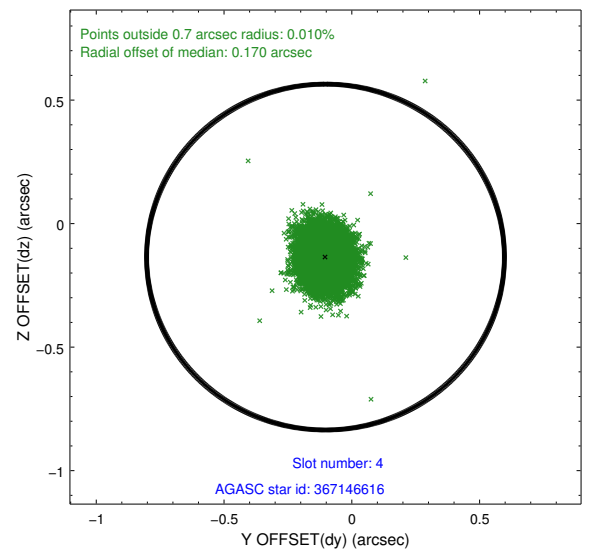
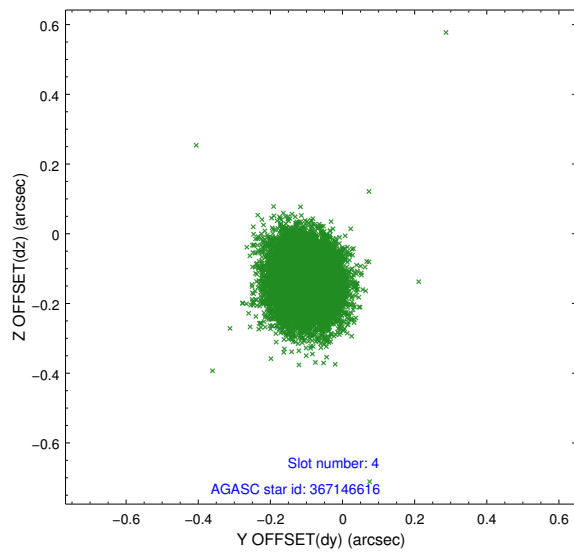
slot	status	id	mag	n_pts	med_dy	med_dz	dr1	dr2	ra	dec	mean_y	mean_z
0	FID	HRC-I-1	7.01	4925	-0.073	0.015	0.007	0.011	0.000000	0.000000	-770.30	-1300.84
1	FID	HRC-I-2	7.04	4925	0.272	-0.176	0.006	0.010	0.000000	0.000000	842.52	-1302.86
2	FID	HRC-I-3	7.09	4921	-0.081	0.072	0.006	0.011	0.000000	0.000000	-1198.62	1003.52
3	GUIDE	367138920	7.73	9848	0.076	-0.028	0.071	0.111	11.513485	40.808909	1768.42	2277.61
4	GUIDE	367146616	8.85	9842	-0.103	-0.135	0.088	0.142	11.418645	41.190163	391.82	2038.37
5	GUIDE	367148872	7.23	9848	0.030	0.045	0.073	0.121	10.505940	40.688258	2149.93	-478.83
6	GUIDE	367657896	9.02	9845	0.044	0.101	0.089	0.147	11.197765	41.313576	-61.64	1447.57
7	GUIDE	367674552	8.85	9841	-0.053	0.019	0.079	0.128	11.016238	41.570845	-996.75	974.71

## 2.4 Star Slots

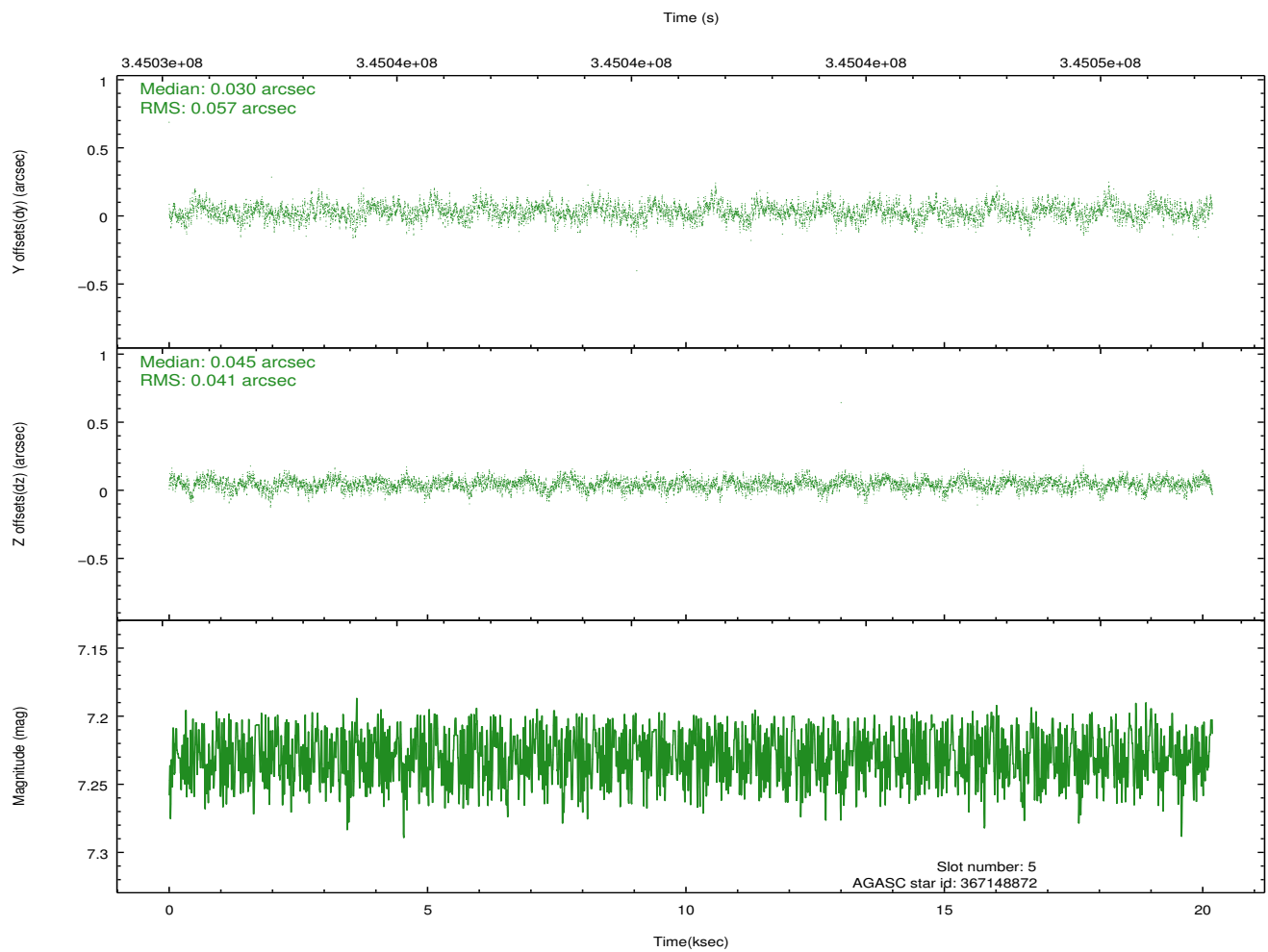
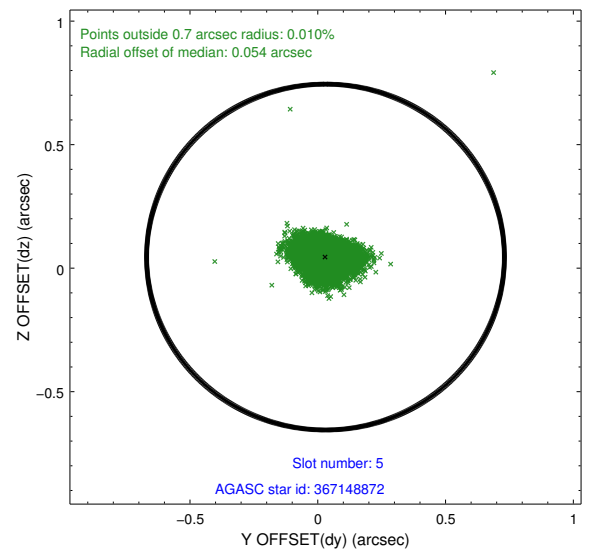
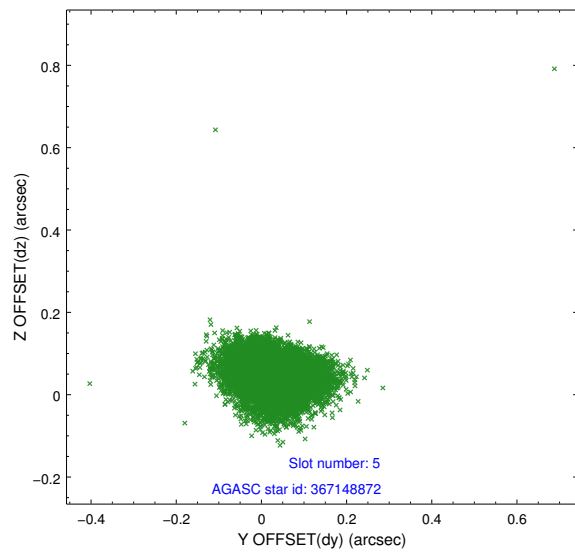
### 2.4.1 Slot 3



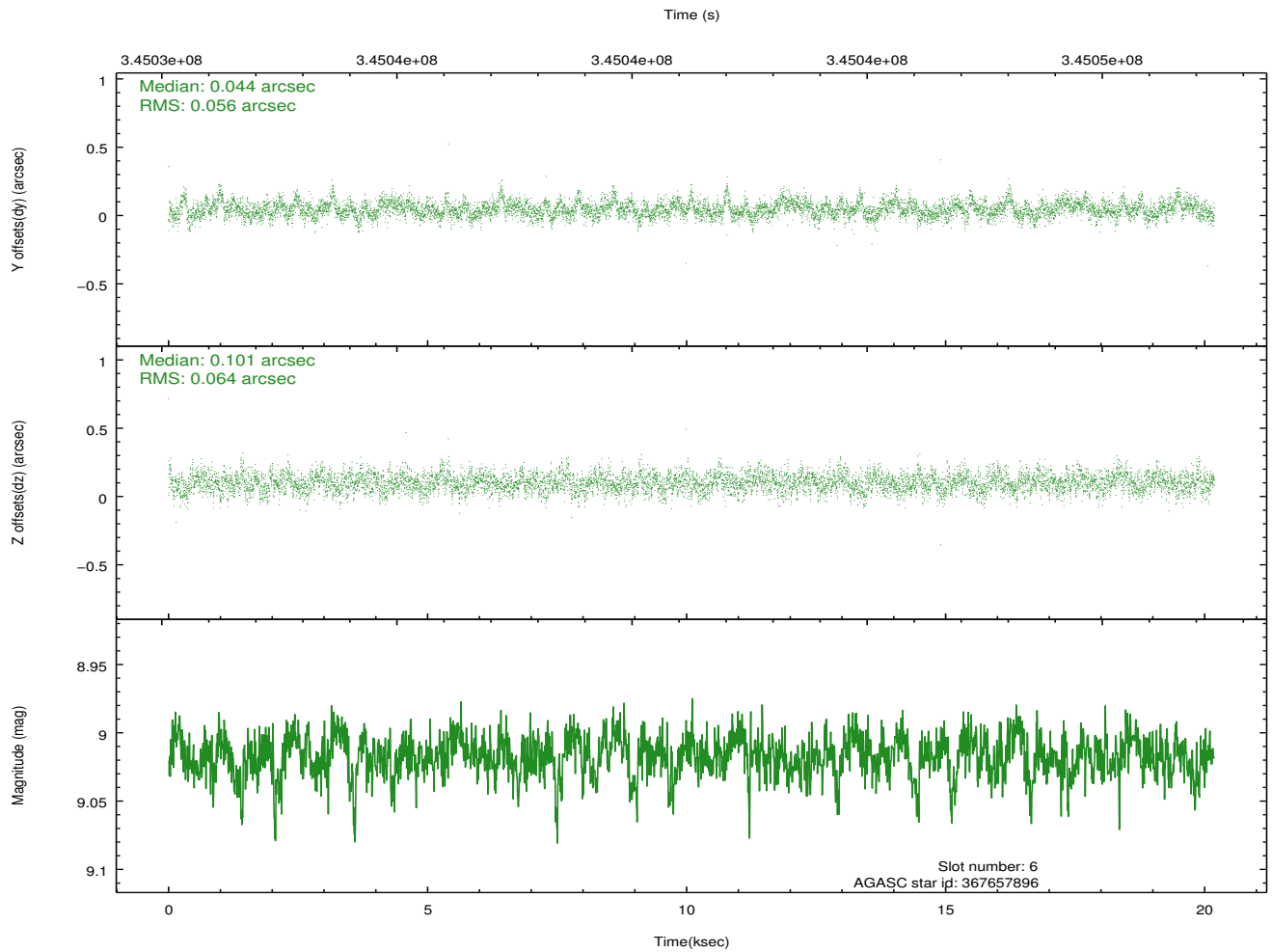
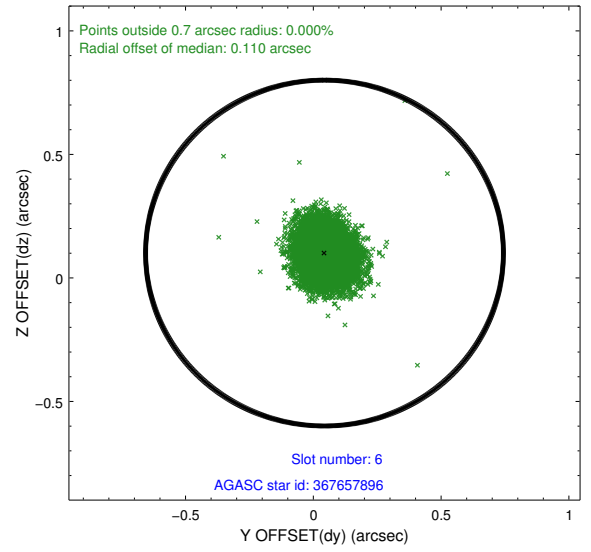
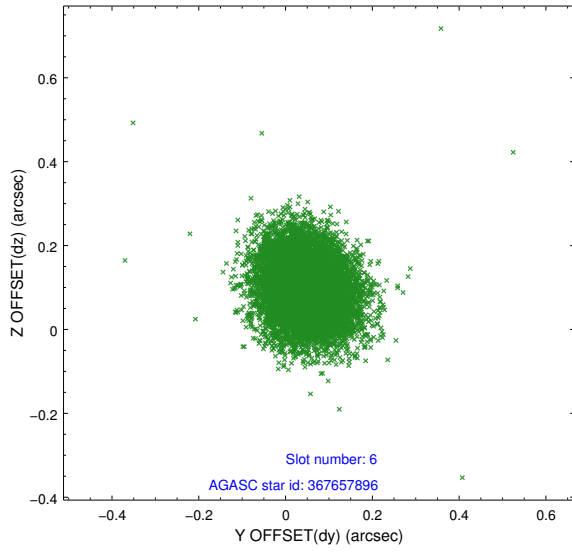
## 2.4.2 Slot 4



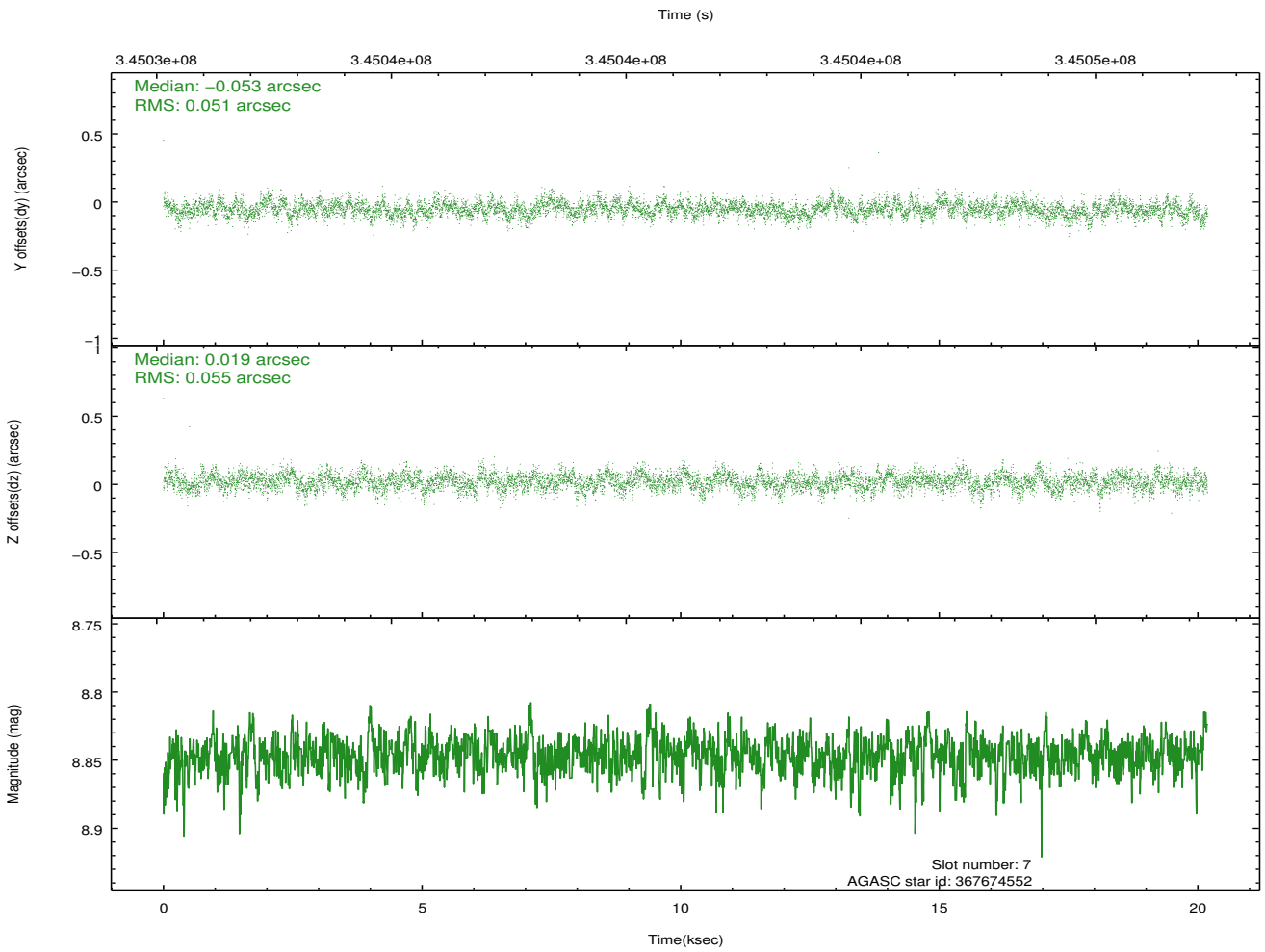
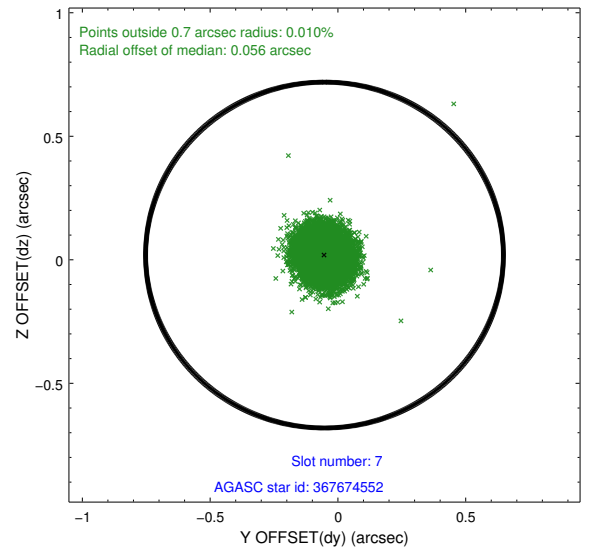
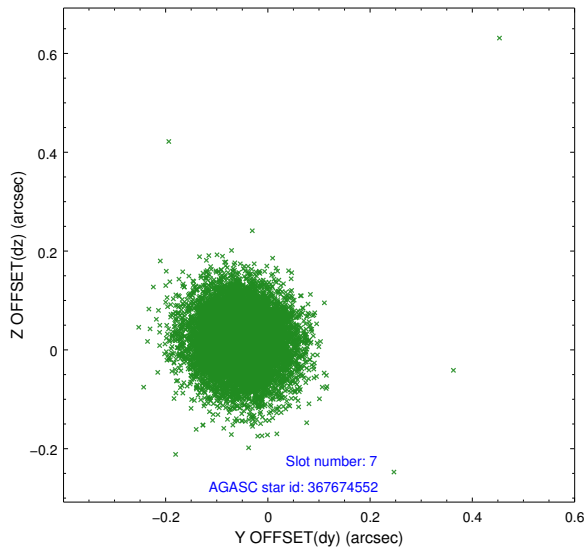
### 2.4.3 Slot 5



### 2.4.4 Slot 6

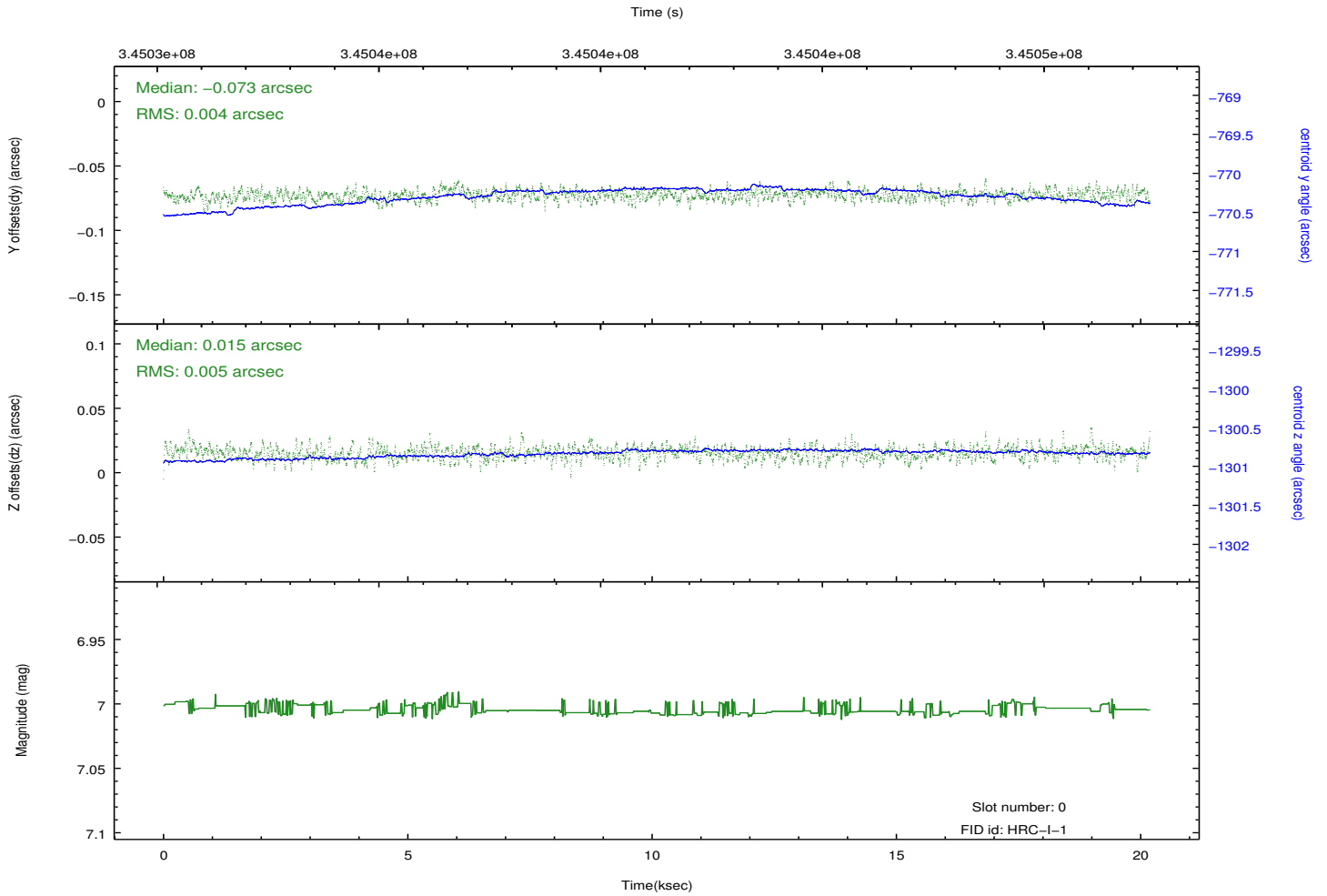
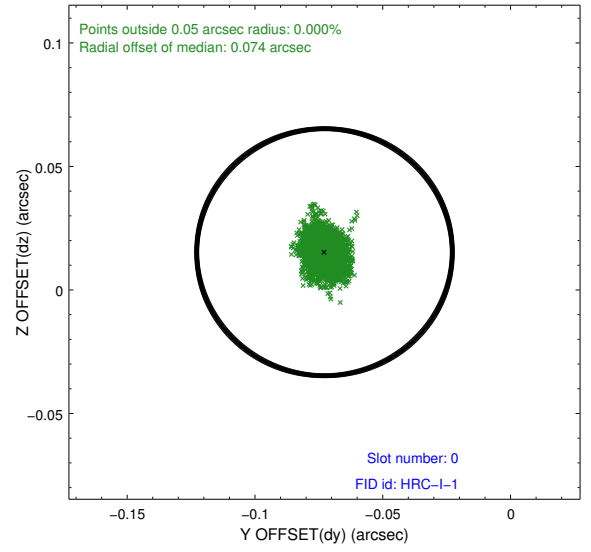
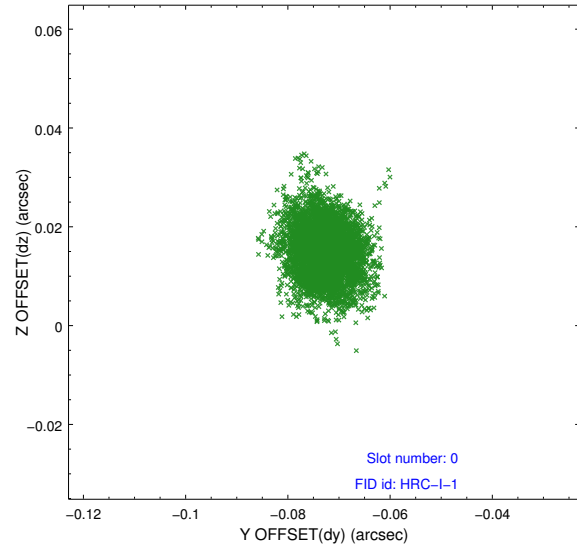


### 2.4.5 Slot 7

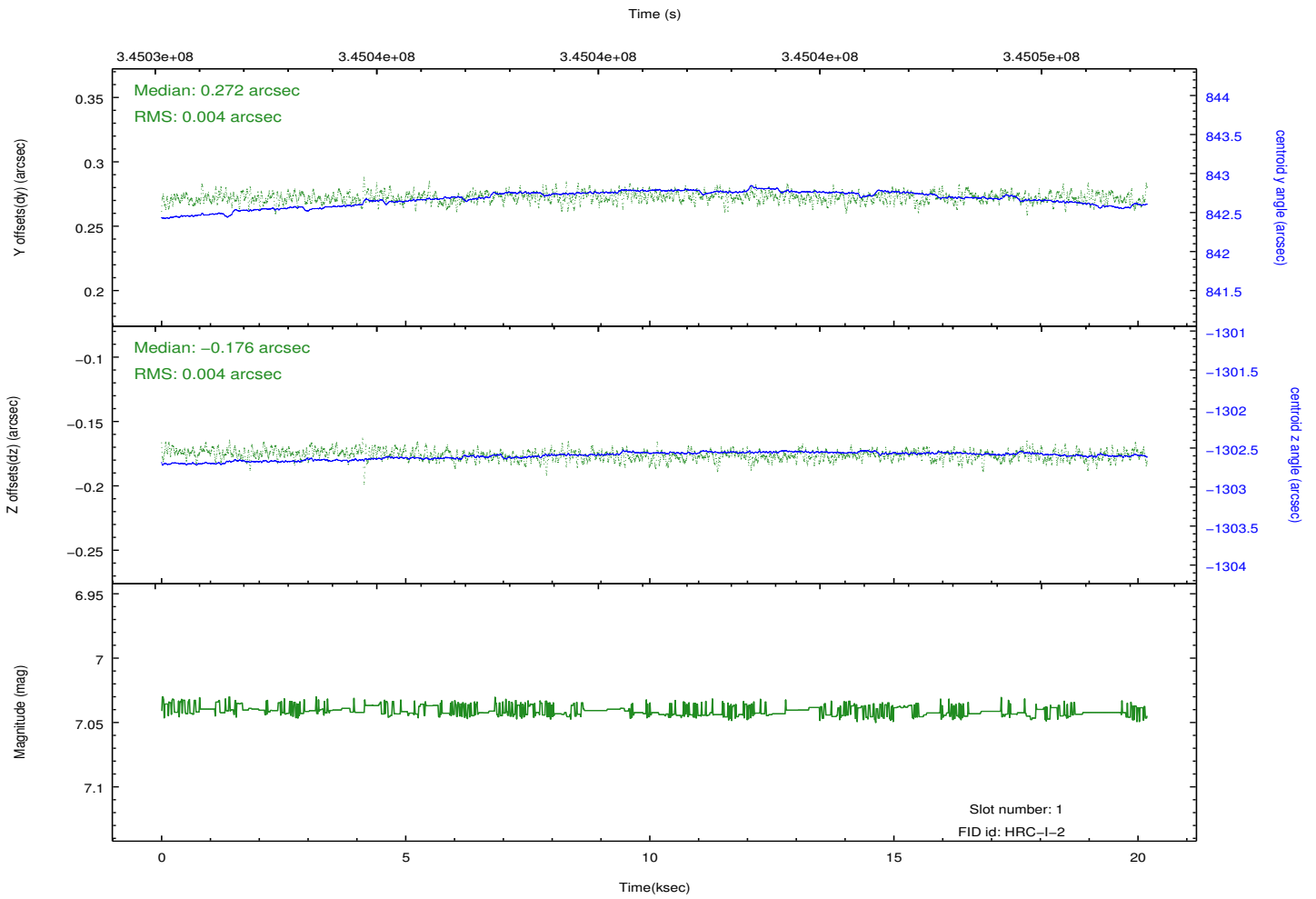
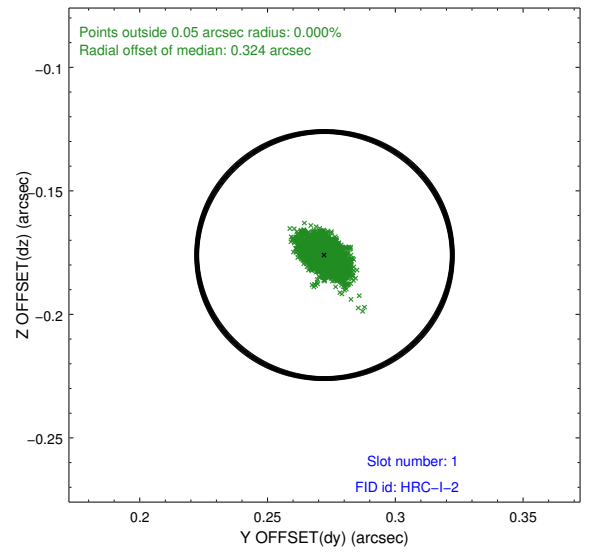
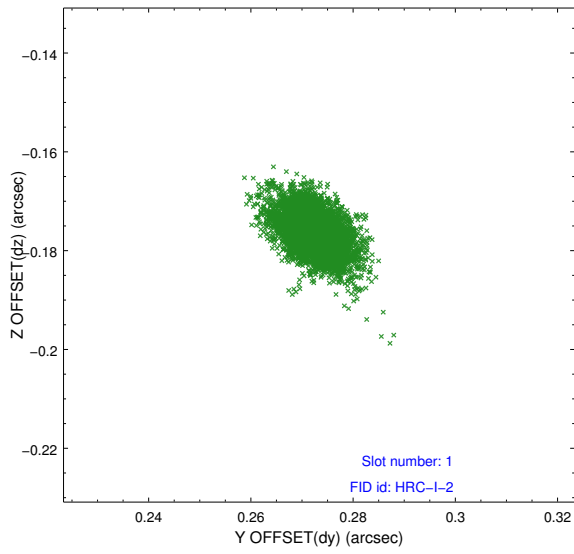


## 2.5 FID Slots

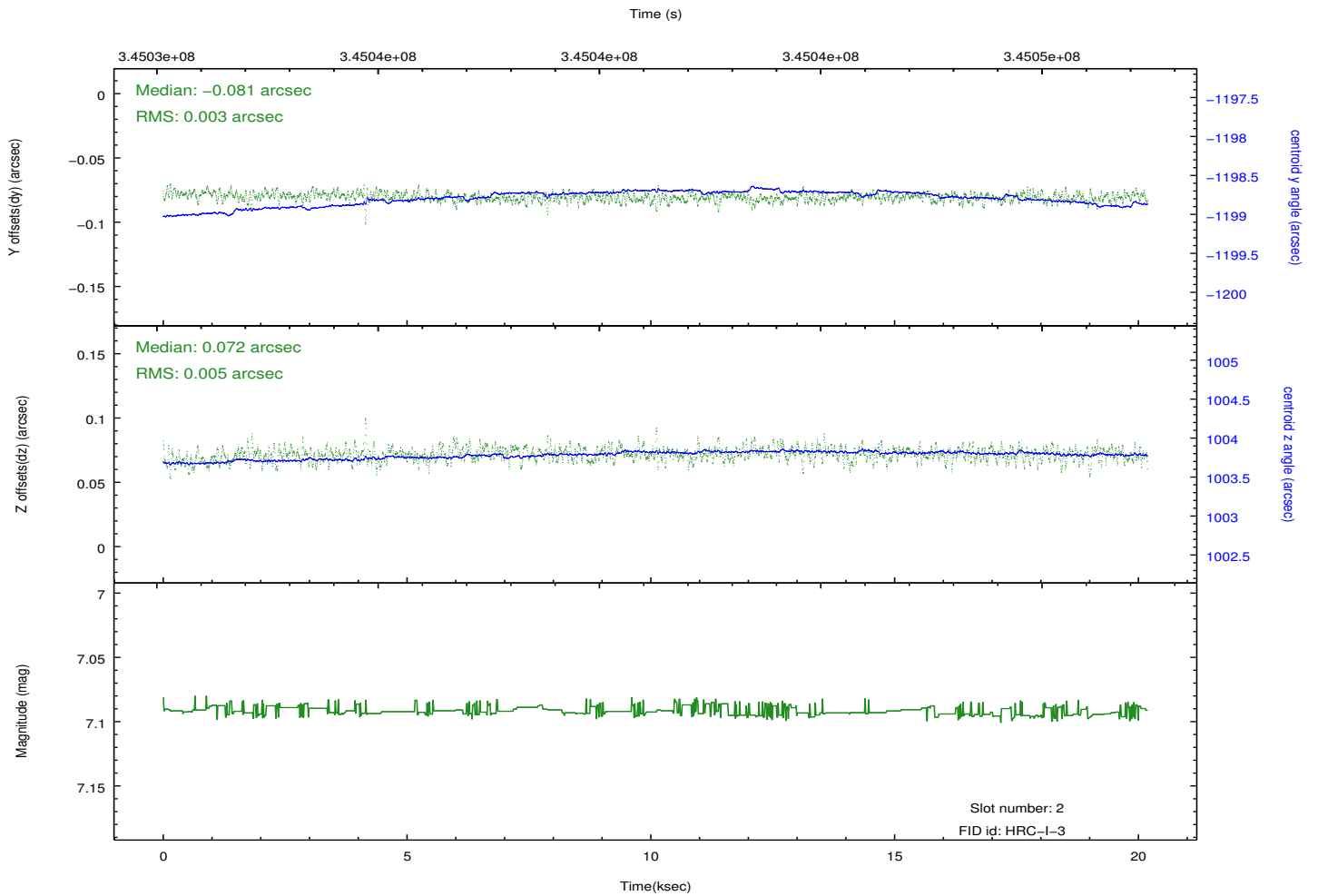
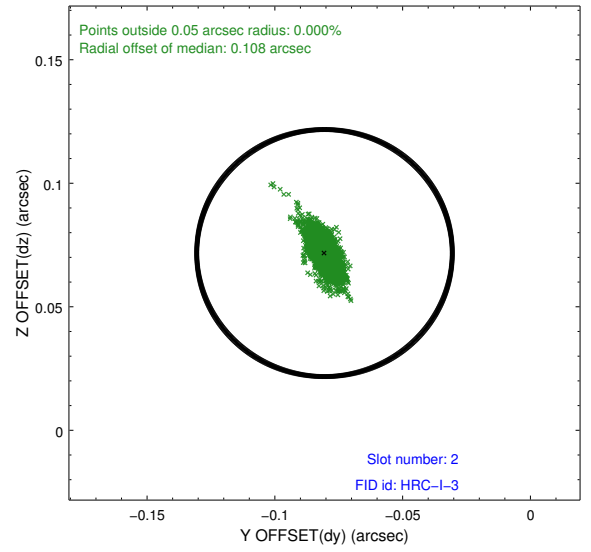
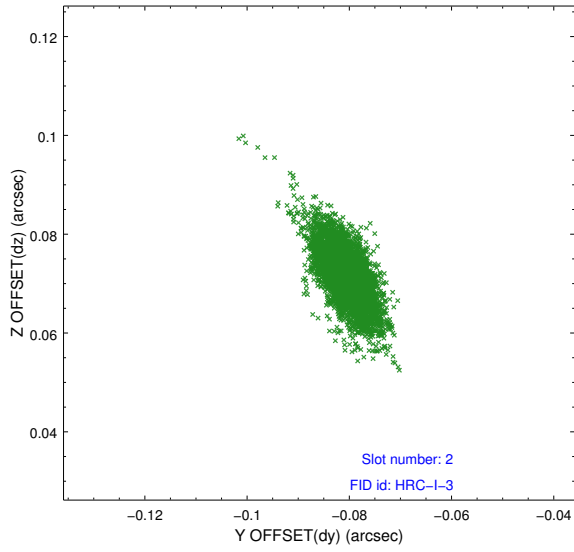
### 2.5.1 Slot 0



## 2.5.2 Slot 1



### 2.5.3 Slot 2



# A Summary

## A.1 Status

V&V Scientist	Beth Sundheim
V&V Date (YYYY-MM-DD)	2012.08.20
V&V Edition	1
V&V Disposition and Status	OK
V&V Charge Time	20.1876322

## A.2 Comments

Joint proposal with XMM.

Window preference met.