

V&V Reference Report

L2 ASCDS Version : 8.4.4

Observation 9918 - L2 Version 2
Chandra X-Ray Center

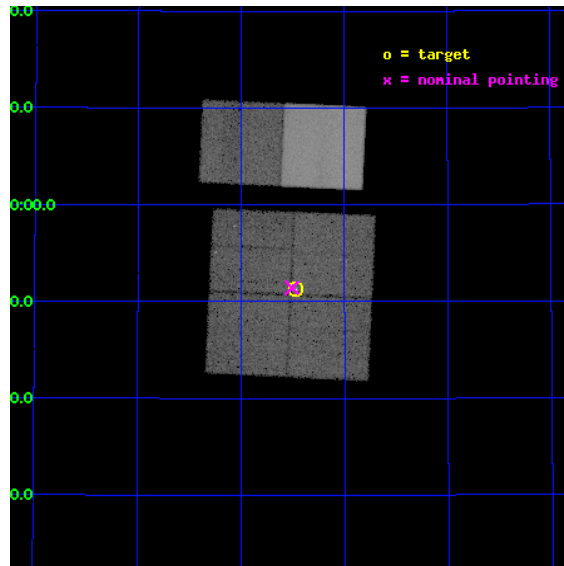
L2 Processing Date : May 30 2012

Contents

1	Front	2
2	OBI	3
2.1	OBI	3
2.1.1	Images	3
2.1.2	Bias	3
2.1.3	Parameters	4
2.1.4	Events	4
2.2	Compared Parameters	5
2.3	Aspect	6
2.4	Star Slots	9
2.4.1	Slot 3	9
2.4.2	Slot 4	10
2.4.3	Slot 5	11
2.4.4	Slot 6	12
2.4.5	Slot 7	13
2.5	FID Slots	14
2.5.1	Slot 0	14
2.5.2	Slot 1	15
2.5.3	Slot 2	16
A	Summary	17
A.1	Status	17
A.2	Comments	17

1 Front

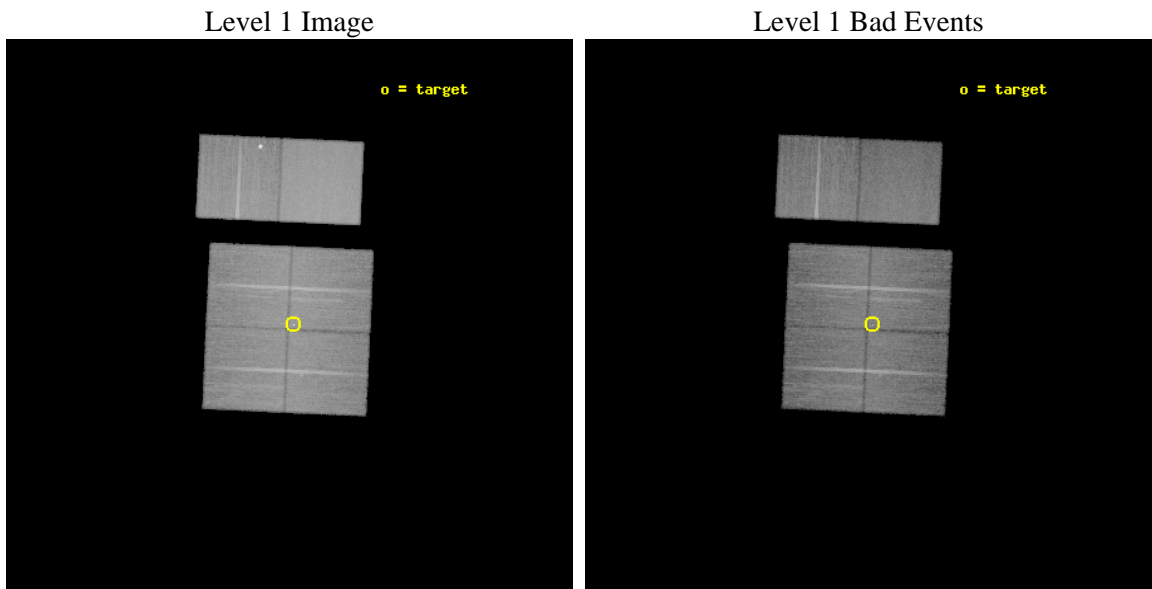
seq_num	200534	Sequence number
obs_id	9918	Observation id
title	Collisionless plasma dynamics in WR140 near the 2009 eclipse and periastron	Proposal title
observer	Dr Andrew Pollock	Principal investigator
object	WR 140	Source name
dtcycle	0	
cycle	P	events from which exps? Prim/Second/Both
ra_targ	305.116667	Observer's specified target RA [deg]
dec_targ	43.8545	Observer's specified target Dec [deg]
ra_nom	305.12725297881	Nominal RA [deg]
dec_nom	43.857249709163	Nominal Dec [deg]
roll_nom	2.6358137906815	Nominal Roll [deg]
revision	2	Processing version of data
ontime	20649.599923134	Sum of GTIs [s]
livetime	20388.122255211	Livetime [s]
ontime0	20649.599923134	Sum of GTIs [s]
ontime1	20649.599923134	Sum of GTIs [s]
ontime2	20643.117972374	Sum of GTIs [s]
ontime3	20649.599923134	Sum of GTIs [s]
ontime6	20649.599923134	Sum of GTIs [s]
ontime7	20649.599923134	Sum of GTIs [s]
l2events	242534	Number of level 2 events



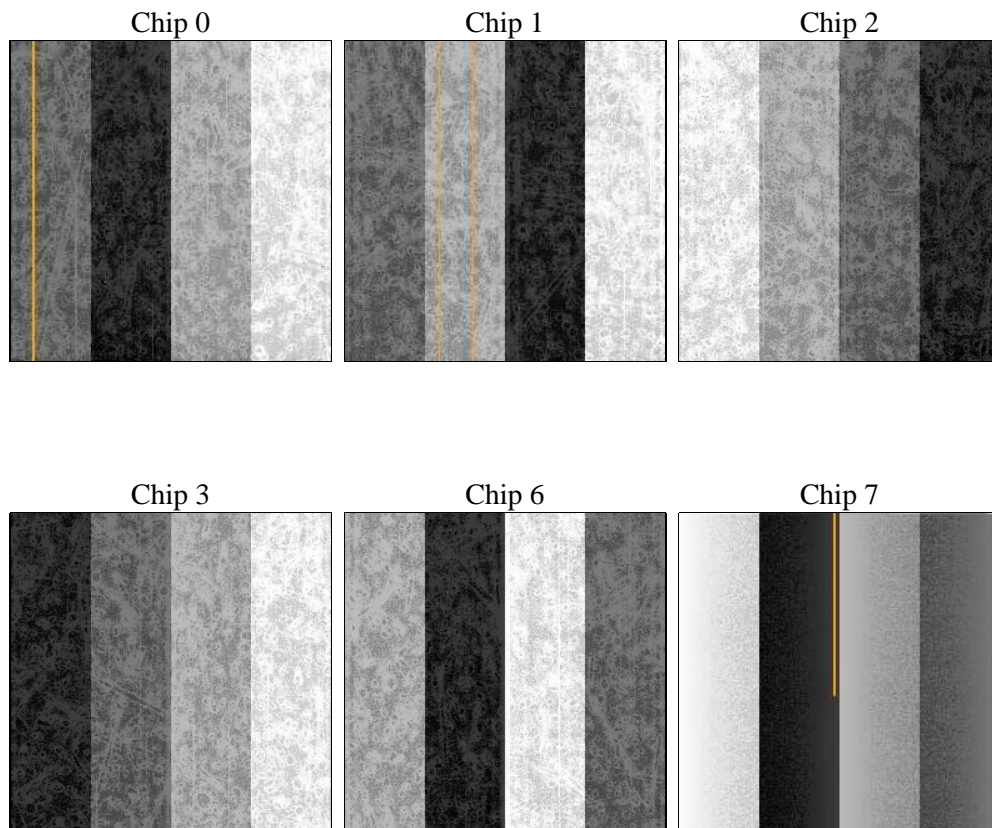
2 OBI

2.1 OBI

2.1.1 Images



2.1.2 Bias



2.1.3 Parameters

obi_num	1	Obi number	sched_exp_time	20500.000000	[s] Scheduled observation exposure time
ascdsver	8.4.4	Processing system revision	ontime	20649.599923134	Sum of GTIs [s]
caldbver	4.4.9	 	ontime0	20649.599923134	Sum of GTIs [s]
date	2012-05-30T06:20:12	Date and time of file creation	ontime1	20649.599923134	Sum of GTIs [s]
revision	2	Processing version of data	ontime2	20643.117972374	Sum of GTIs [s]
			ontime3	20649.599923134	Sum of GTIs [s]
			ontime6	20649.599923134	Sum of GTIs [s]
			ontime7	20649.599923134	Sum of GTIs [s]
			l1events	1367922	Number of level 1 events

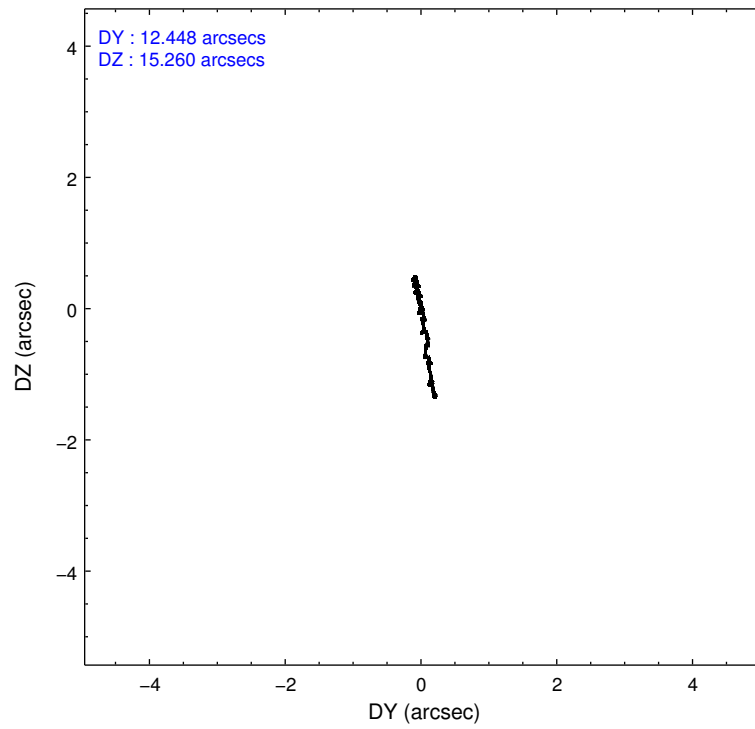
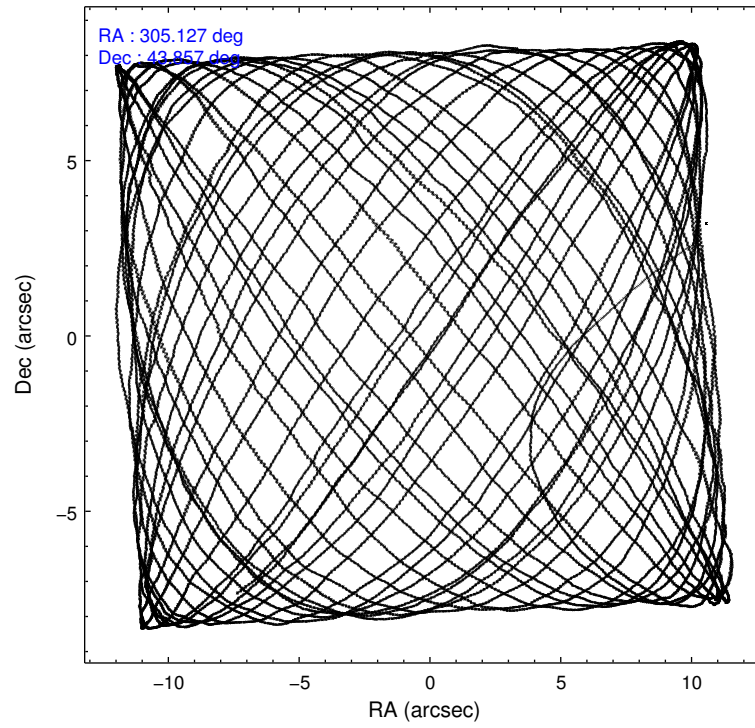
2.1.4 Events

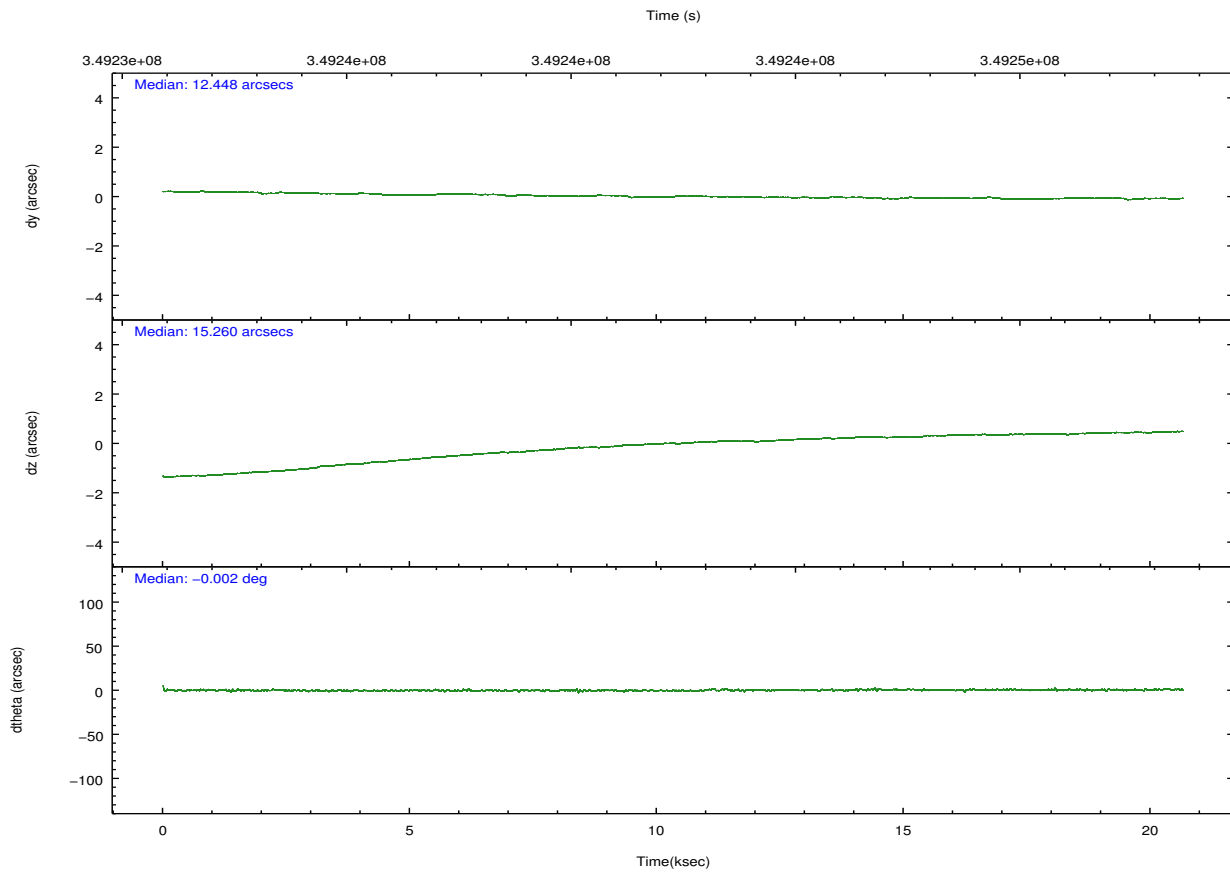
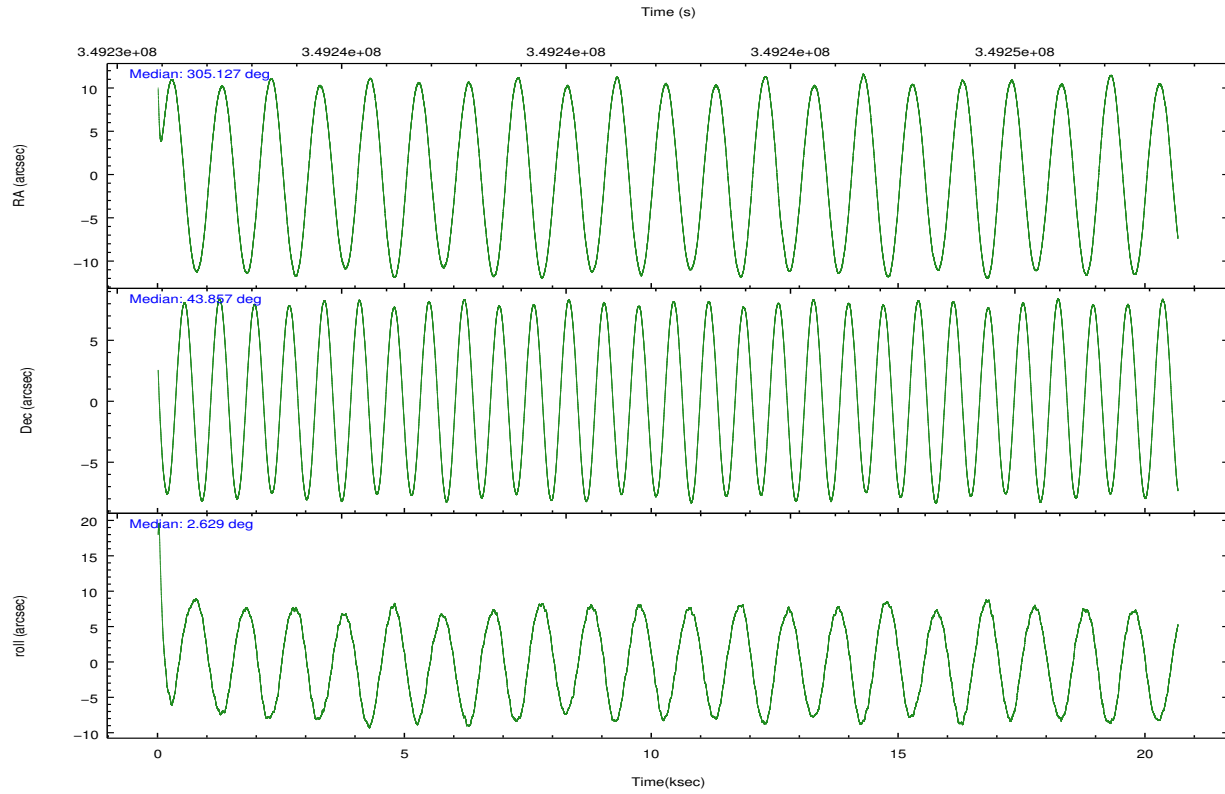
	ccd 0	ccd 1	ccd 2	ccd 3	ccd 6	ccd 7		ccd 0	ccd 1	ccd 2	ccd 3	ccd 6	ccd 7
level 1 events	200017	198814	215606	214221	234197	305067	grade 0 events	11945	11269	12059	13538	17120	11252
rejected events	172788	170509	189314	185176	201170	179319		5%	5%	5%	6%	7%	3%
rejected %	86%	85%	87%	86%	85%	58%	grade 1 events	148	131	156	198	146	316
								0%	0%	0%	0%	0%	0%
							grade 2 events	6124	6715	5409	5767	6124	26415
								3%	3%	2%	2%	2%	8%
							grade 3 events	2494	2666	2452	2621	2401	10591
								1%	1%	1%	1%	1%	3%
							grade 4 events	2305	2637	2329	2528	2384	10711
								1%	1%	1%	1%	1%	3%
							grade 5 events	9116	9770	8724	10247	10778	28270
								4%	4%	4%	4%	4%	9%
							grade 6 events	4790	5484	4392	5030	5494	68703
								2%	2%	2%	2%	2%	22%
							grade 7 events	163095	160142	180085	174292	189750	148809
								81%	80%	83%	81%	81%	48%

2.2 Compared Parameters

Parameter	Planned	Actual	Parameter	Planned	Actual
Instrument	ACIS	ACIS	Obspar format version number	7	7
Detector	ACIS-012367	ACIS-012367	Obspar file type	PREDICTED	ACTUAL
Grating	NONE	NONE	Obspar update status	NONE	UPDATED
Data mode	FAINT	FAINT	CCD I0 on	Y	Y
Observation mode	POINTING	POINTING	CCD I1 on	Y	Y
[deg] Pointing RA	305.095178	305.1272529788084	CCD I2 on	Y	Y
[deg] Pointing Dec	43.842324	43.85724970916314	CCD I3 on	Y	Y
[deg] Pointing Roll	2.449340	2.635813790681467	CCD S0 on	N	N
[s] Window start time (MET)	348710466.184000	348710466.184000	CCD S1 on	N	N
[s] Window stop time (MET)	349574466.184000	349574466.184000	CCD S2 on	O2	Y
[mm] SIM focus pos	-0.782348	-0.7809083437167272	CCD S3 on	O1	Y
[mm] SIM defocus	0	0.001439871863259334	CCD S4 on	N	N
[mm] SIM translation stage pos	-233.592463	-233.5874344608287	CCD S5 on	N	N
[mm] SIM translation stage offset	0	-0.005018542100998502	Number of optional ACIS chips dropped	0	0
[s] Observation start time (MET)	349232105.184000	349230894.75036	On-chip summing requested	N	N
Observation start date	2009-01-25T00:53:59	2009-01-25T00:34:54	Subarray requested	NONE	NONE
[s] Observation end time (MET)	349252605.184000	349253773.26399	Alternating exposures requested	N	N
Observation end date	2009-01-25T06:35:39	2009-01-25T06:56:13	[s] Primary exposure time	0.000000	3.2
Read mode	TIMED	TIMED			

2.3 Aspect



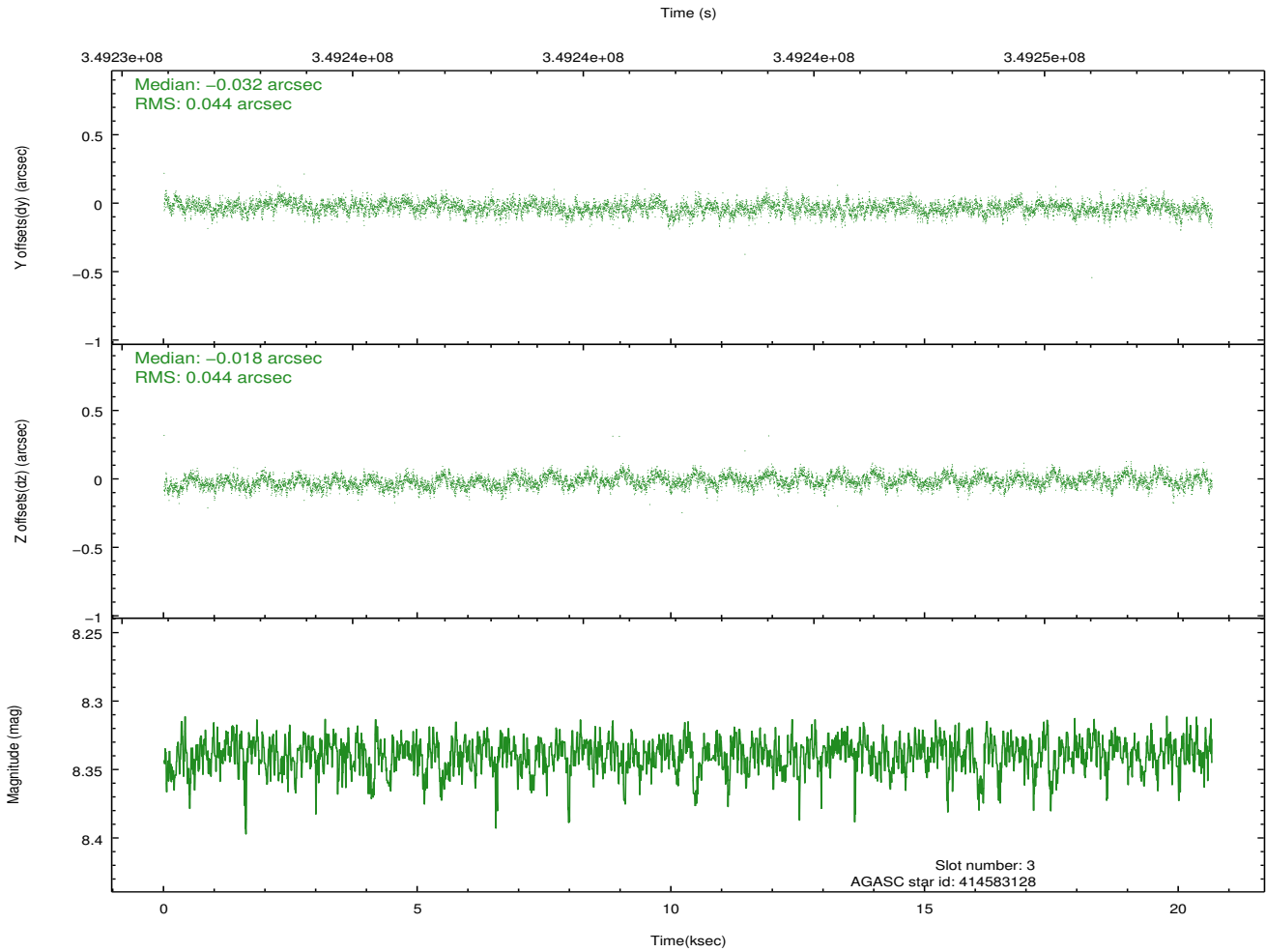
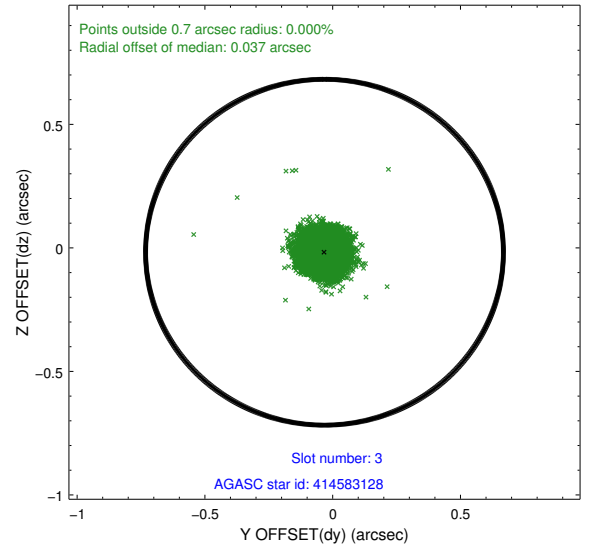
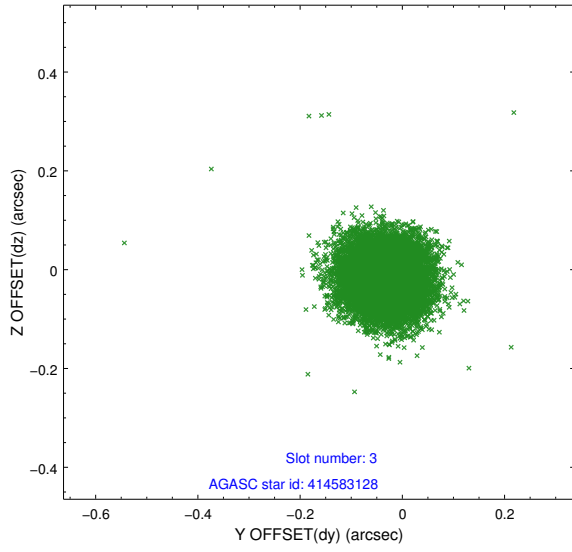


Slot Statistics

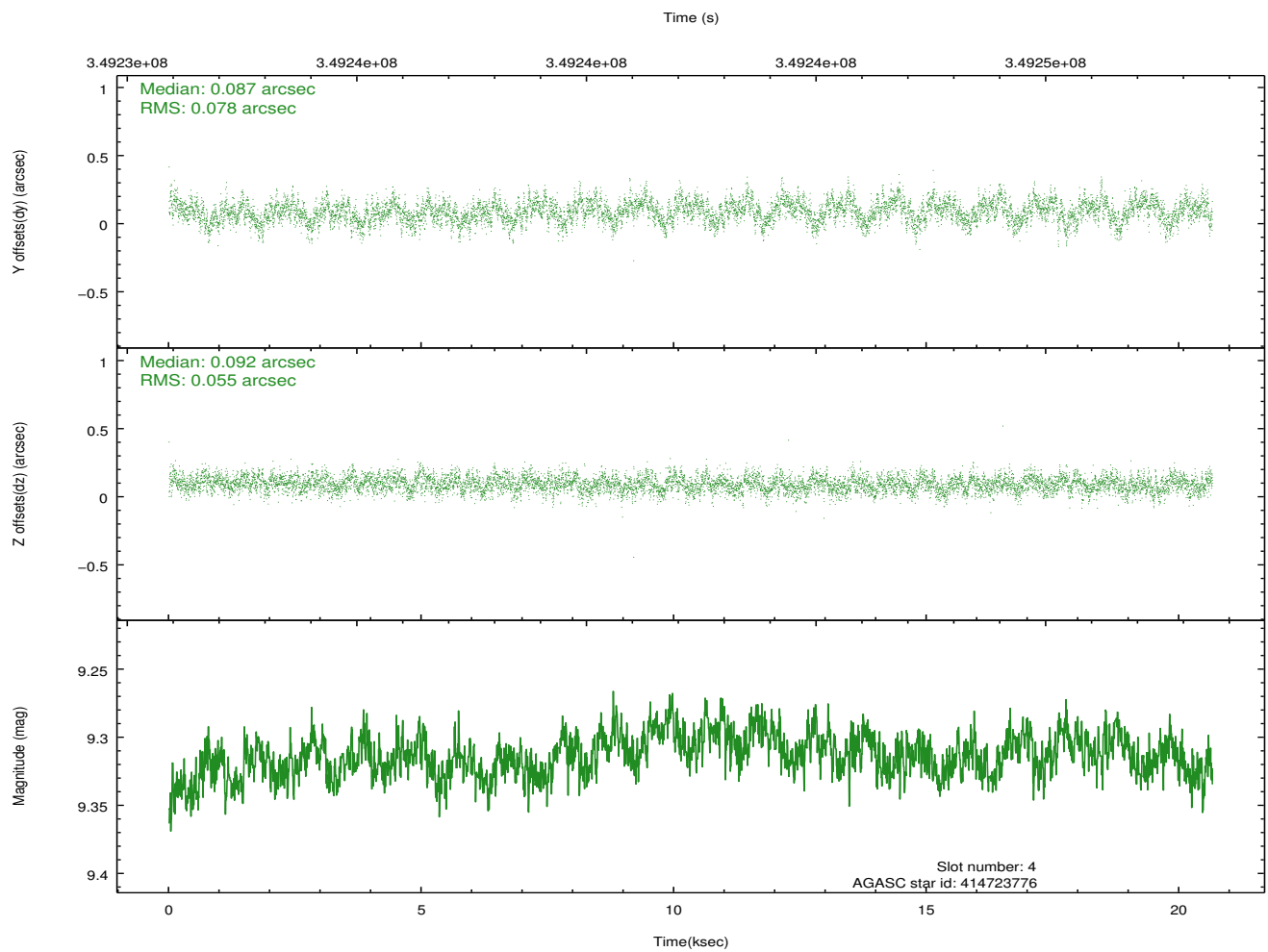
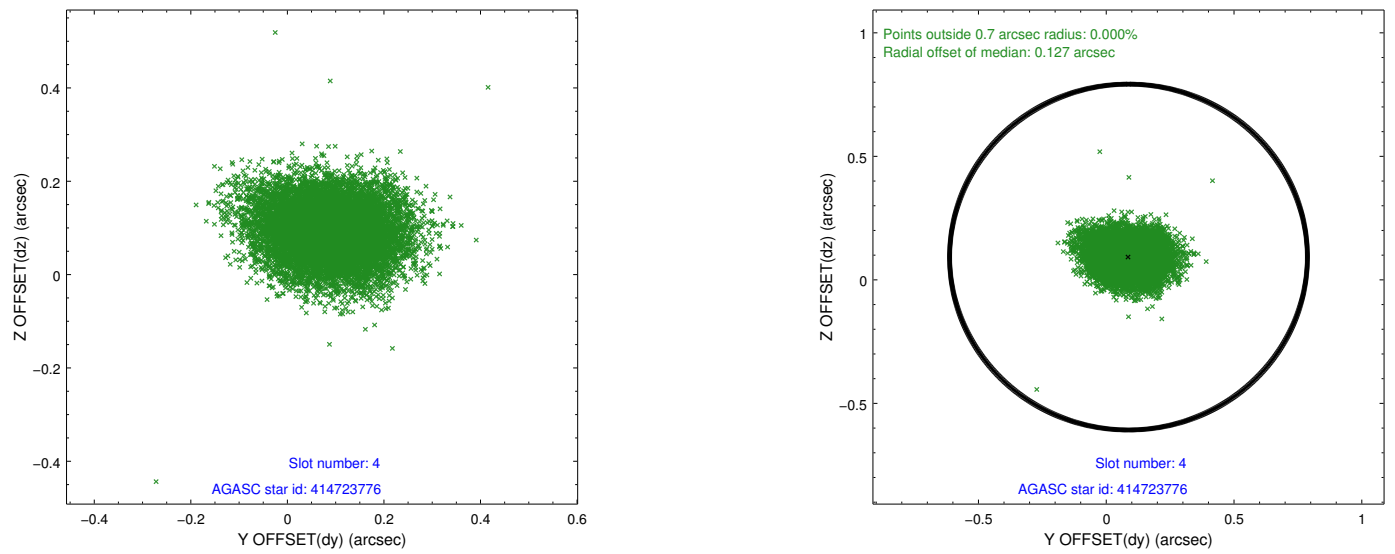
slot	status	id	mag	n_pts	med_dy	med_dz	dr1	dr2	ra	dec	mean_y	mean_z
0	FID	ACIS-I-1	7.12	5037	-0.019	-0.028	0.041	0.074	0.000000	0.000000	927.04	-838.68
1	FID	ACIS-I-4	7.04	5038	0.161	0.051	0.026	0.044	0.000000	0.000000	2147.37	1061.09
2	FID	ACIS-I-5	7.10	5038	-0.240	0.047	0.018	0.031	0.000000	0.000000	-1820.95	1059.14
3	GUIDE	414583128	8.34	10076	-0.032	-0.018	0.066	0.105	304.426562	44.225700	-1664.20	1459.53
4	GUIDE	414723776	9.31	10066	0.087	0.092	0.100	0.166	305.795174	43.432480	1765.86	-1543.91
5	GUIDE	414724728	8.95	10067	-0.005	-0.069	0.112	0.170	305.252472	43.377115	340.18	-1690.34
6	GUIDE	414585176	8.27	10075	0.037	0.144	0.137	0.198	304.215764	43.683315	-2311.03	-461.96
7	GUIDE	414725232	6.88	5038	-0.152	-0.313	0.086	0.138	305.116565	43.854522	56.88	41.37

2.4 Star Slots

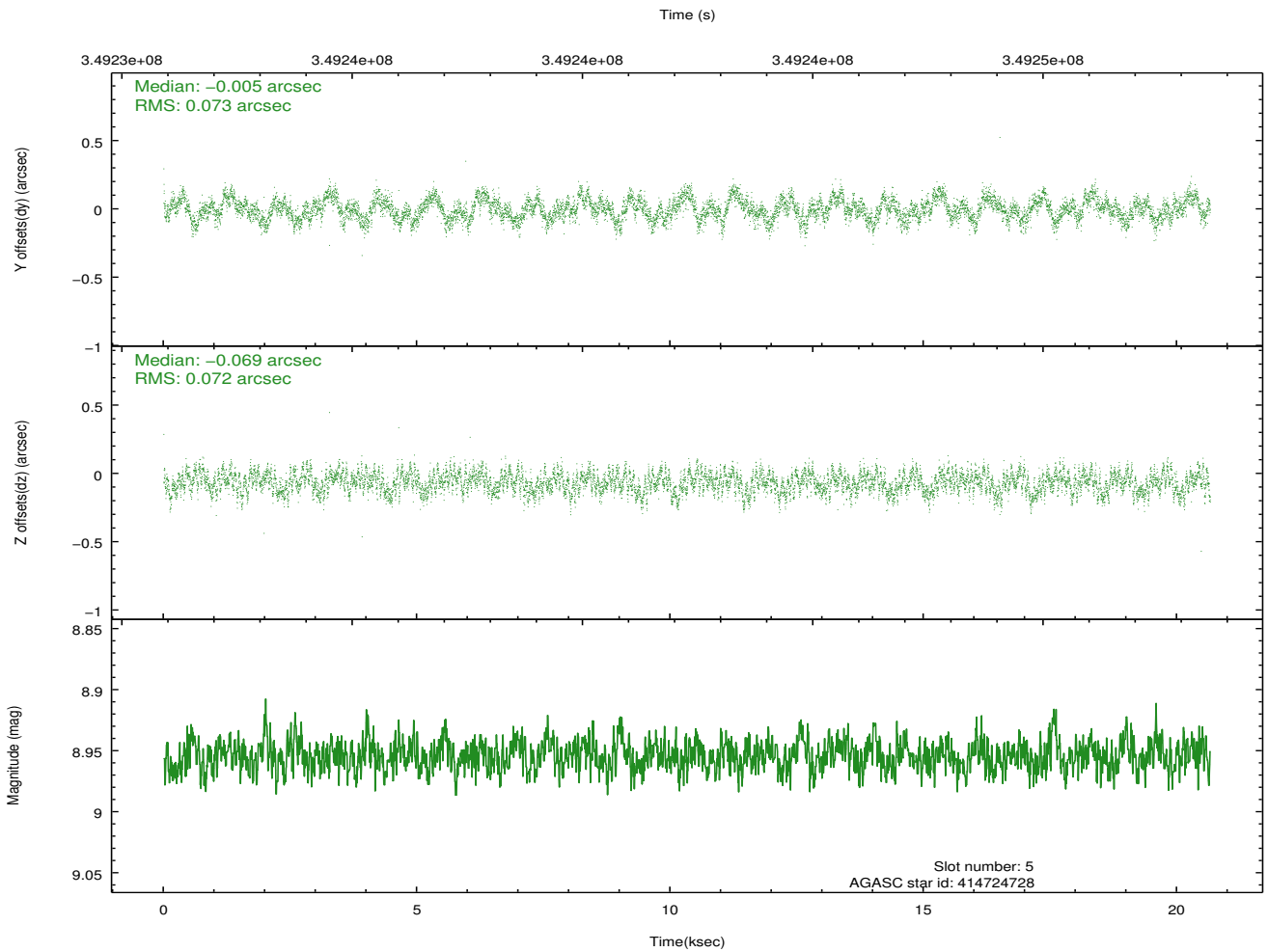
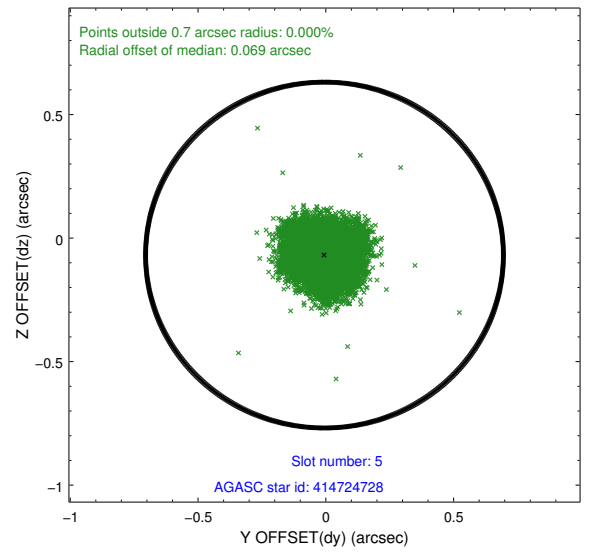
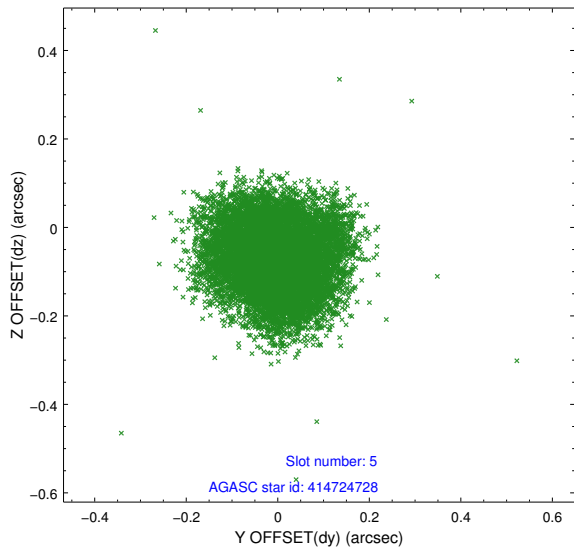
2.4.1 Slot 3



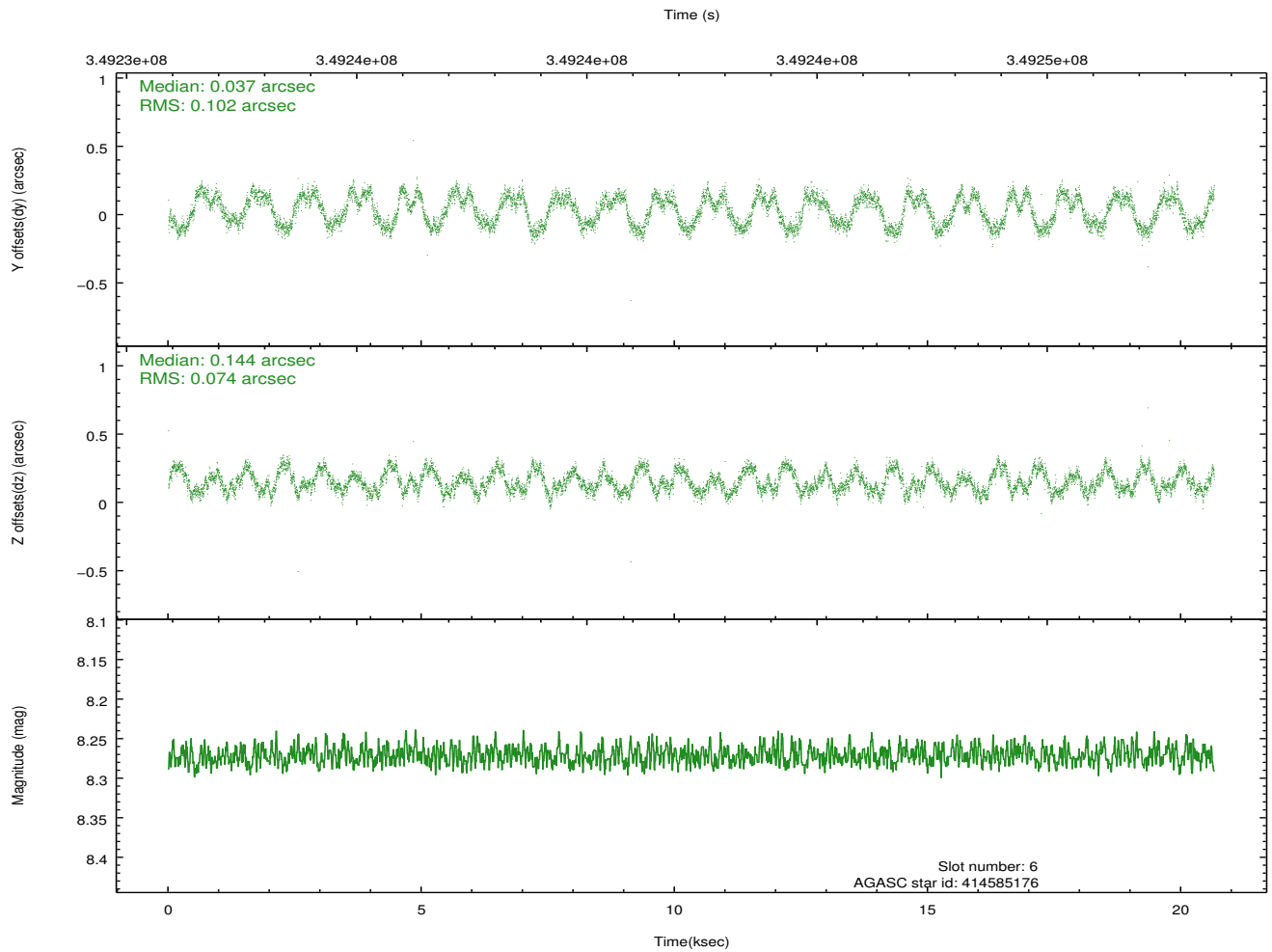
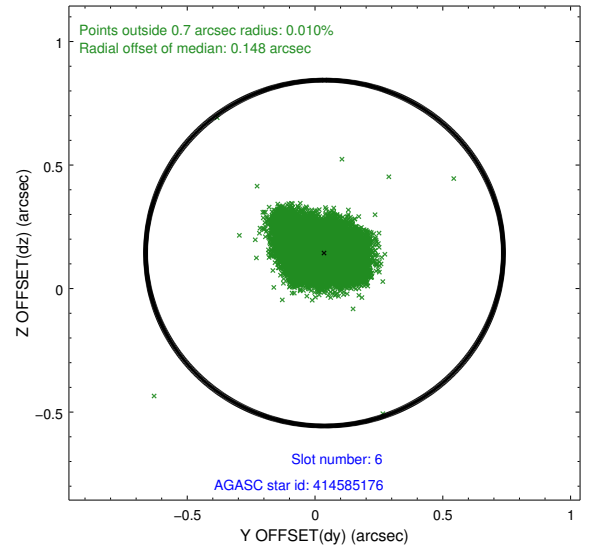
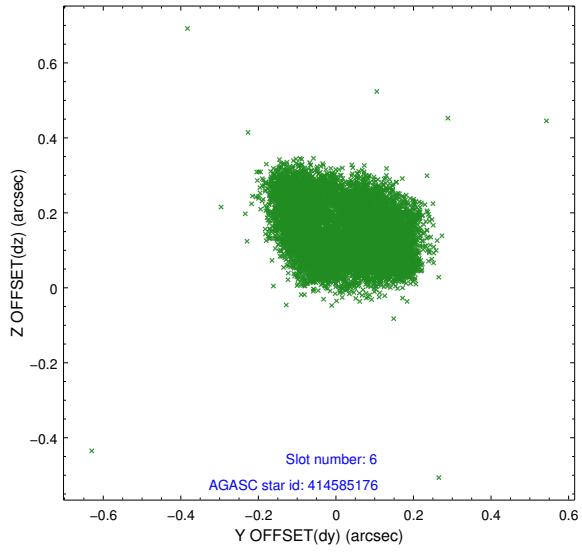
2.4.2 Slot 4



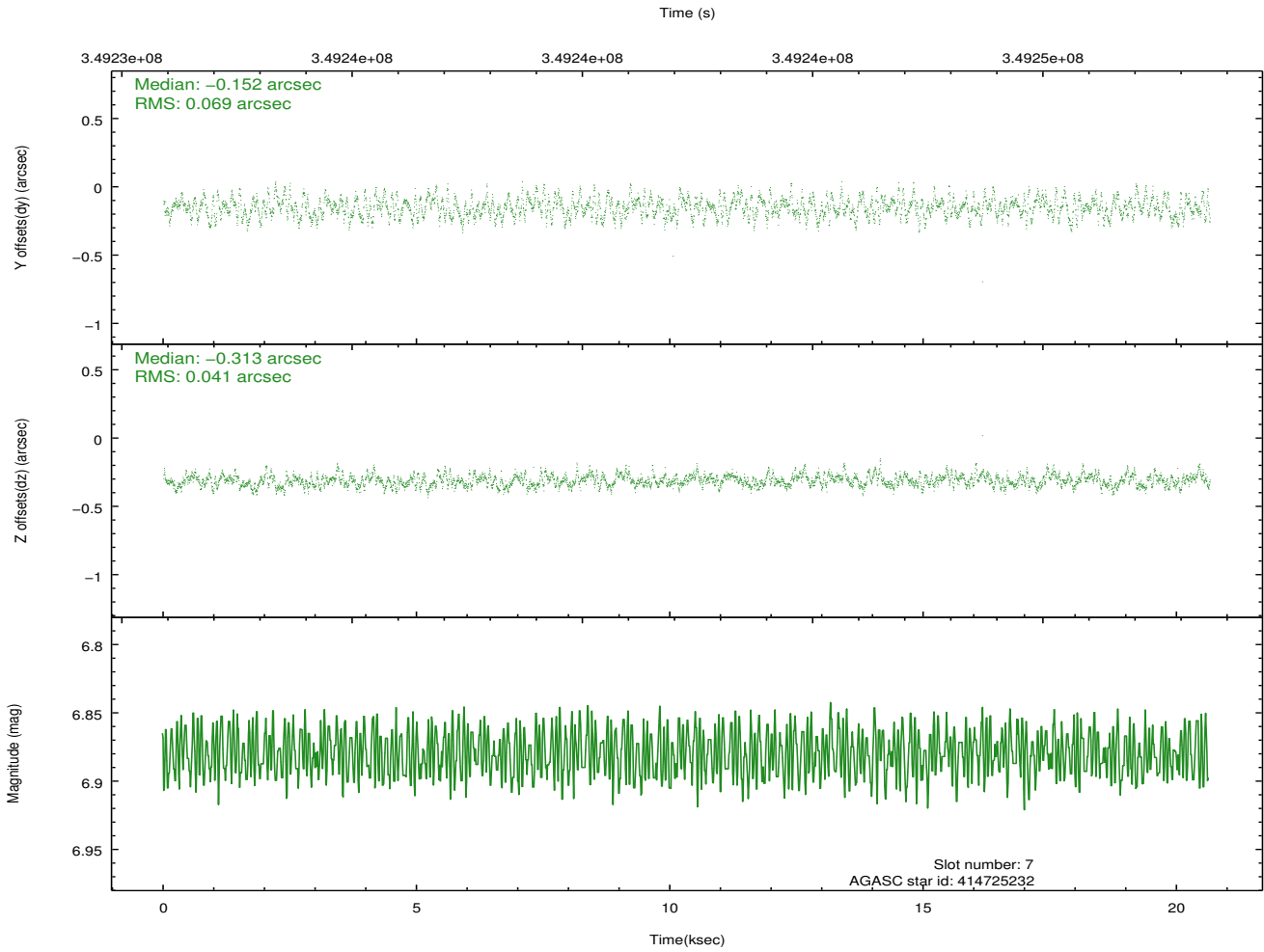
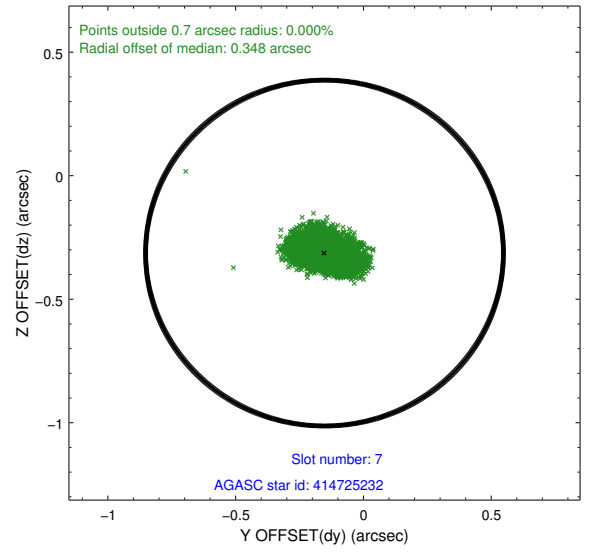
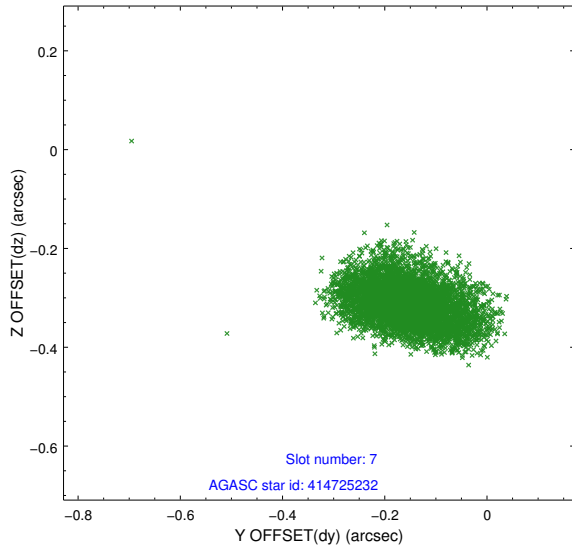
2.4.3 Slot 5



2.4.4 Slot 6

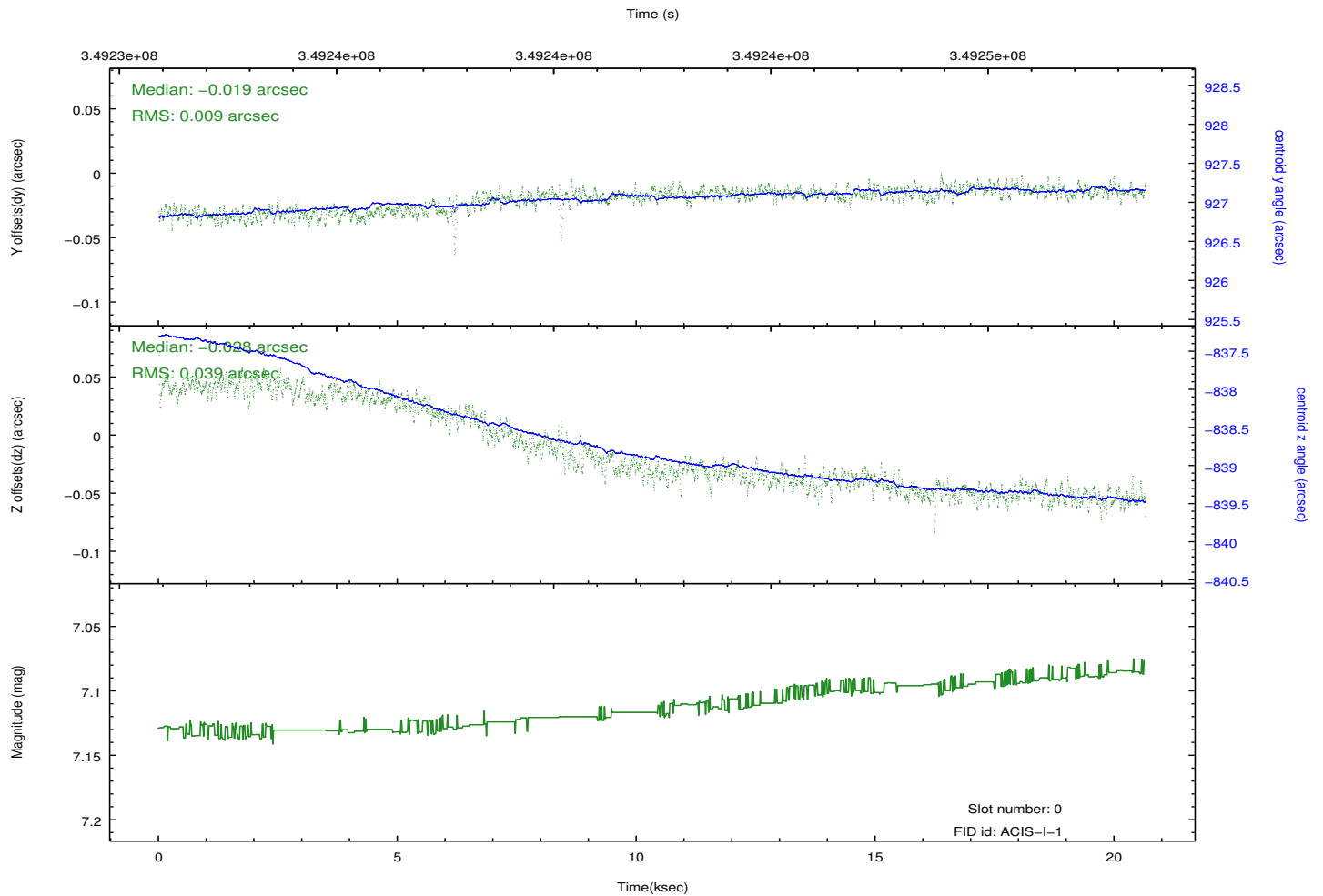
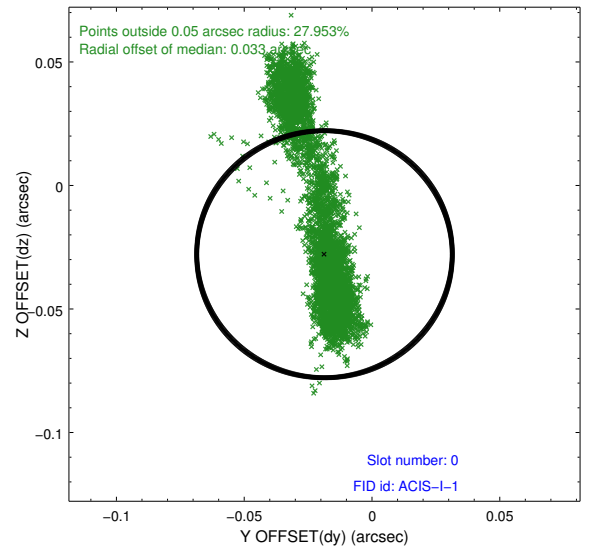
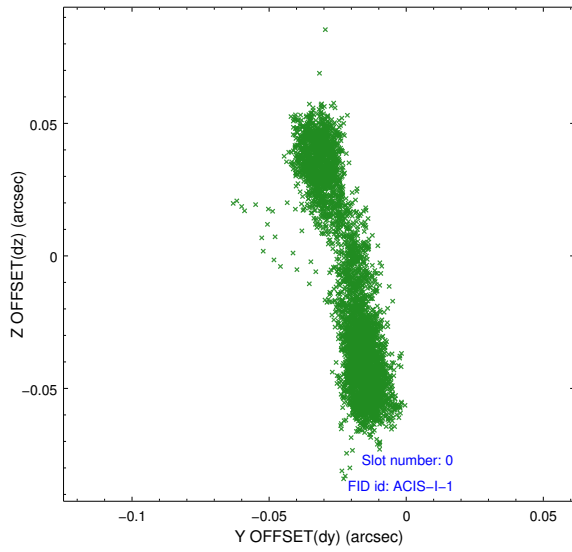


2.4.5 Slot 7

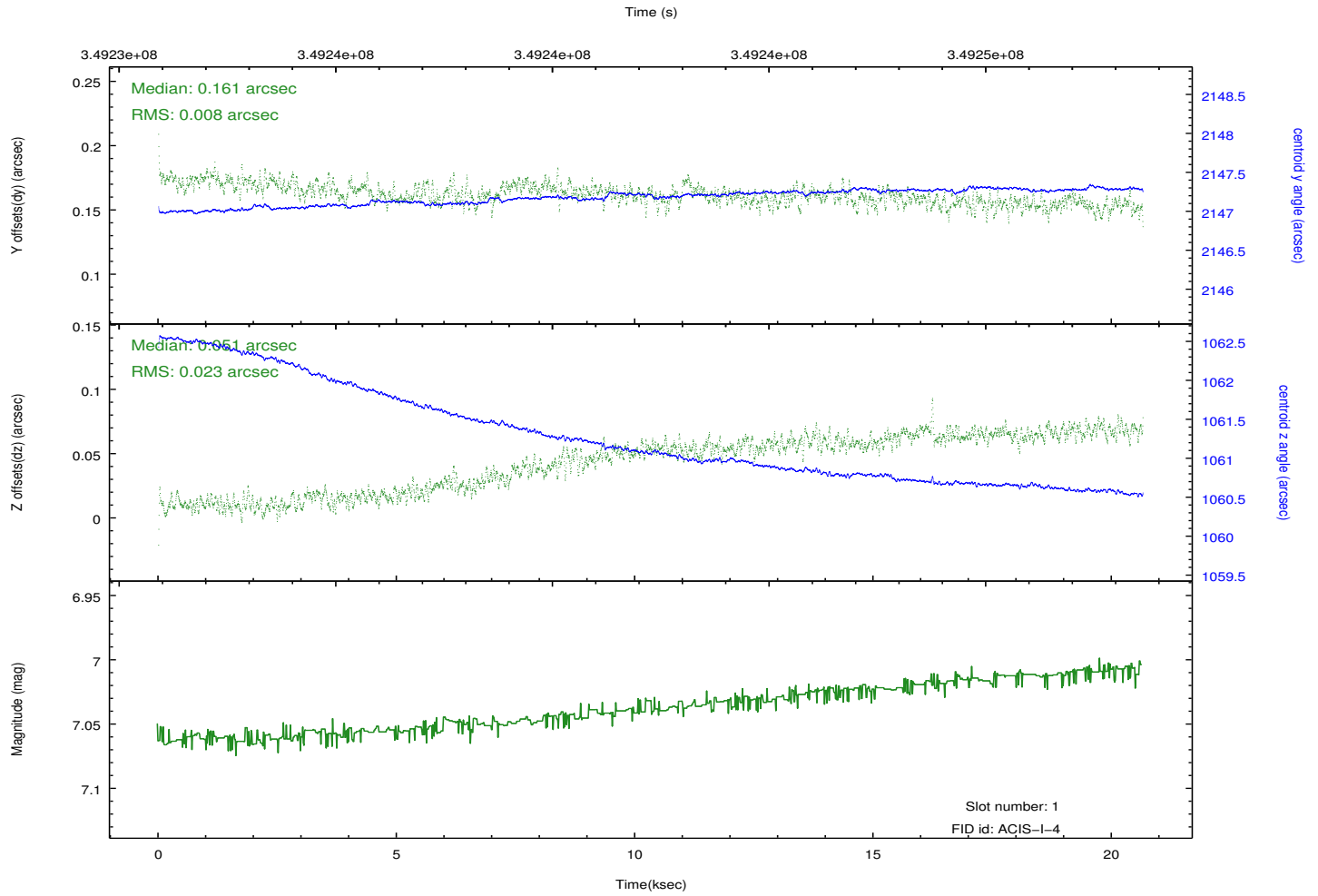
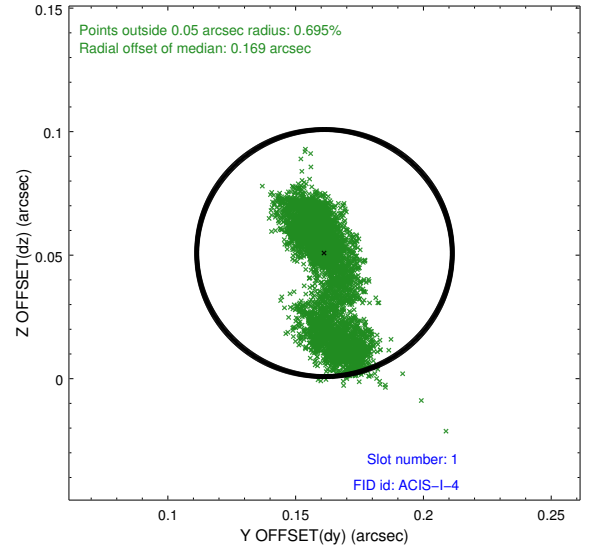
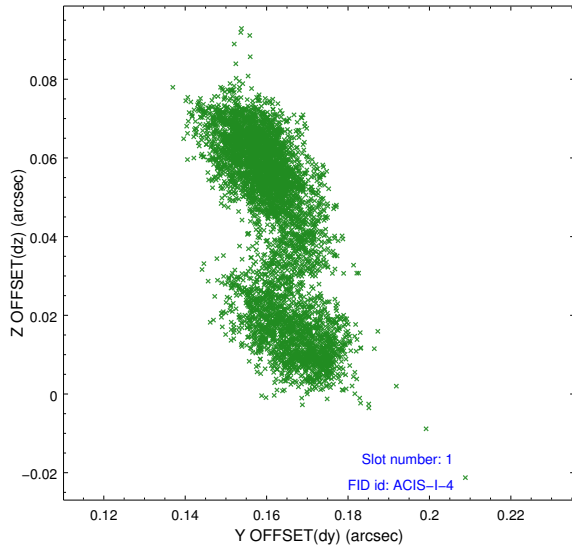


2.5 FID Slots

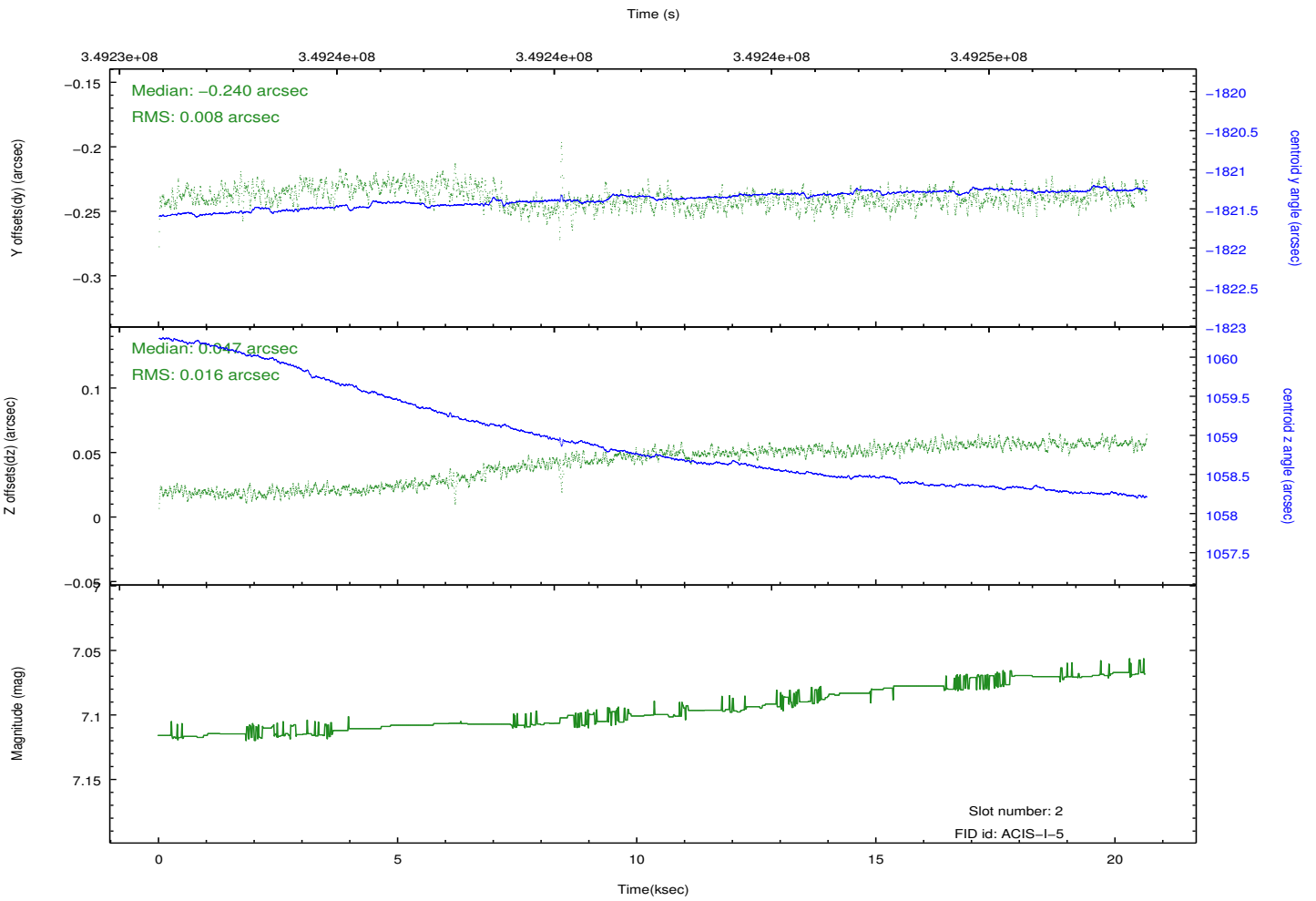
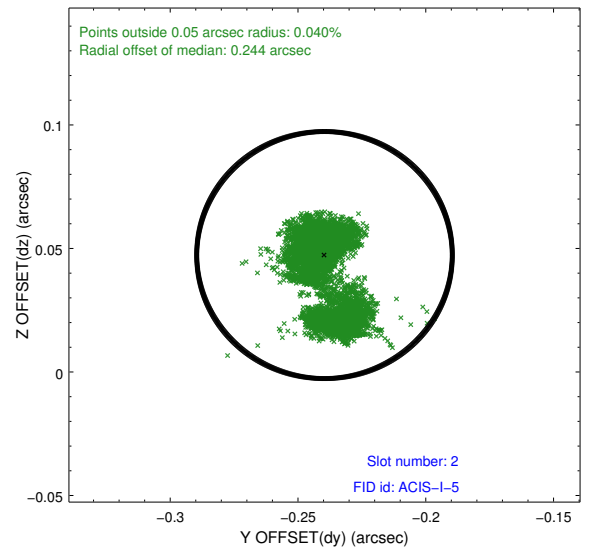
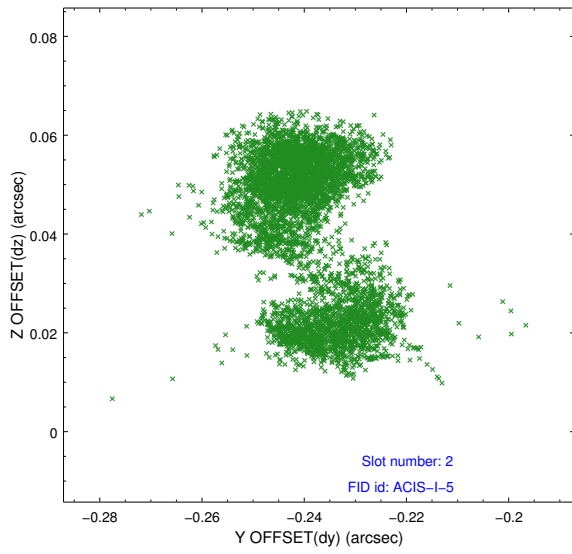
2.5.1 Slot 0



2.5.2 Slot 1



2.5.3 Slot 2



A Summary

A.1 Status

V&V Scientist	Jen Lauer
V&V Date (YYYY-MM-DD)	2012.06.04
V&V Edition	1
V&V Disposition and Status	OK
V&V Charge Time	20.6495999

A.2 Comments

Window constraint met.