

V&V Reference Report

L2 ASCDS Version : 8.4.5

Observation 10069 - L2 Version 3
Chandra X-Ray Center

L2 Processing Date : Jun 16 2012

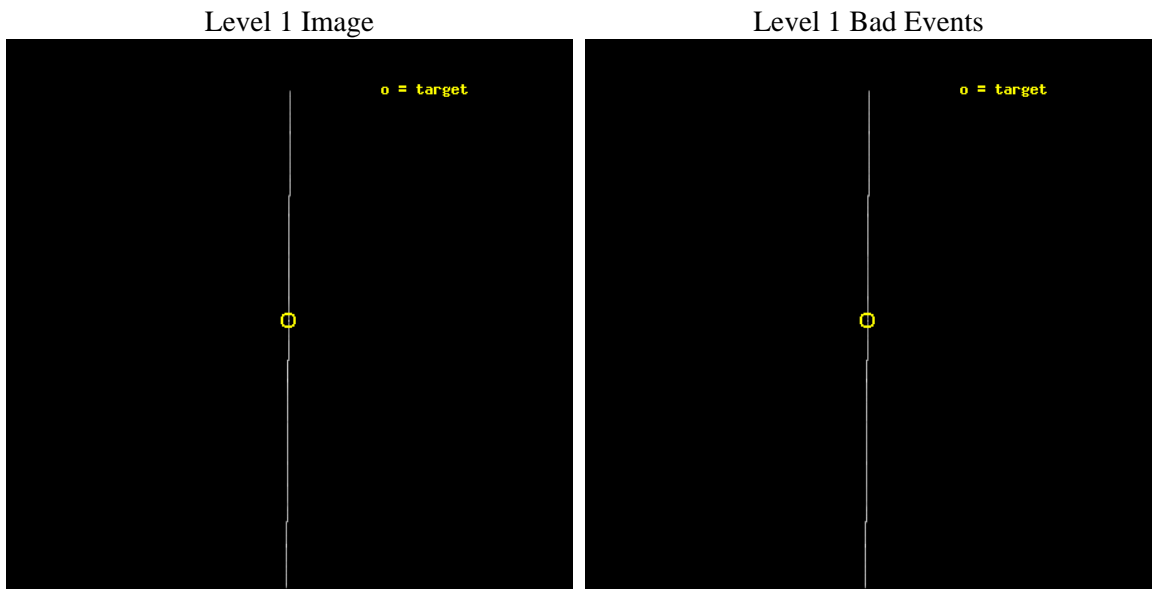
Contents

1	Front	2
2	OBI	3
2.1	OBI	3
2.1.1	Images	3
2.1.2	Parameters	4
2.1.3	Events	4
2.2	Compared Parameters	5
2.3	Aspect	6
2.4	Star Slots	9
2.4.1	Slot 3	9
2.4.2	Slot 4	10
2.4.3	Slot 5	11
2.4.4	Slot 6	12
2.4.5	Slot 7	13
2.5	FID Slots	14
2.5.1	Slot 0	14
2.5.2	Slot 1	15
2.5.3	Slot 2	16
3	Gratings	17
3.1	HEG Arm	17
3.2	MEG Arm	19
A	Summary	21
A.1	Status	21
A.2	Comments	21

2 OBI

2.1 OBI

2.1.1 Images



2.1.2 Parameters

obi_num	0	Obi number	sched_exp_time	30597.365000	[s] Scheduled observation exposure time
ascdsver	8.4.5	Processing system revision	ontime	30669.25	Sum of GTIs [s]
caldbver	4.4.10	 	ontime4	30669.25	Sum of GTIs [s]
date	2012-06-16T02:33:10	Date and time of file creation	ontime5	30669.25	Sum of GTIs [s]
revision	3	Processing version of data	ontime6	30669.25	Sum of GTIs [s]
			ontime7	30669.25	Sum of GTIs [s]
			ontime8	30669.25	Sum of GTIs [s]
			ontime9	30669.25	Sum of GTIs [s]
			l1events	4217169	Number of level 1 events

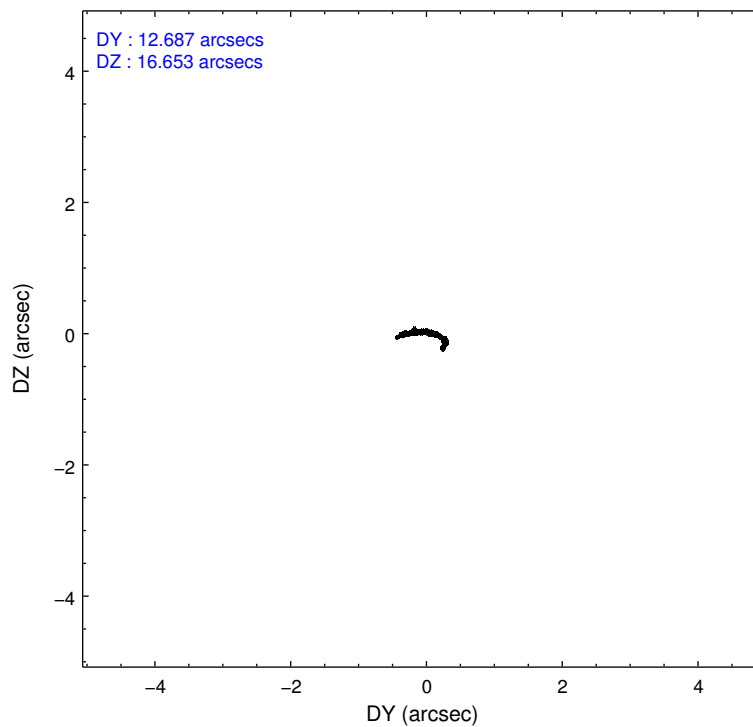
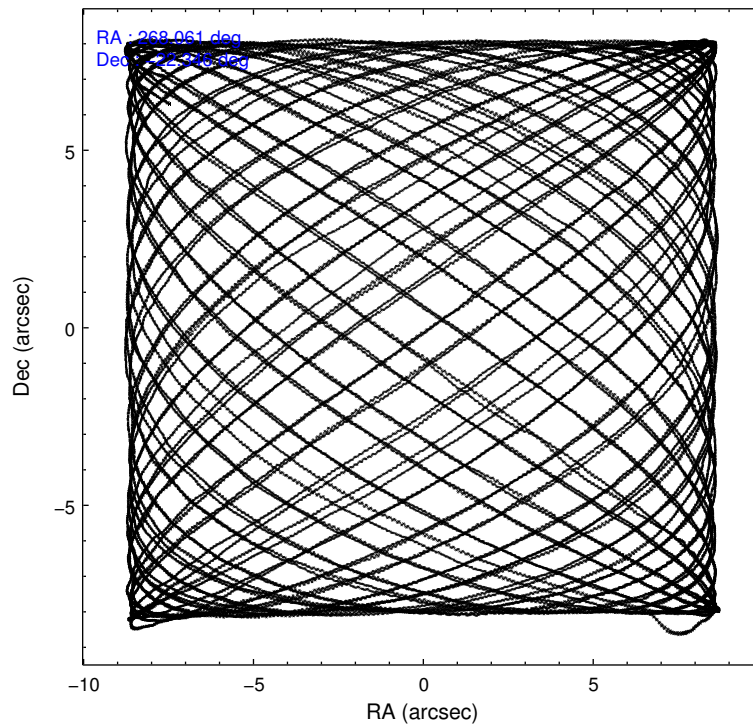
2.1.3 Events

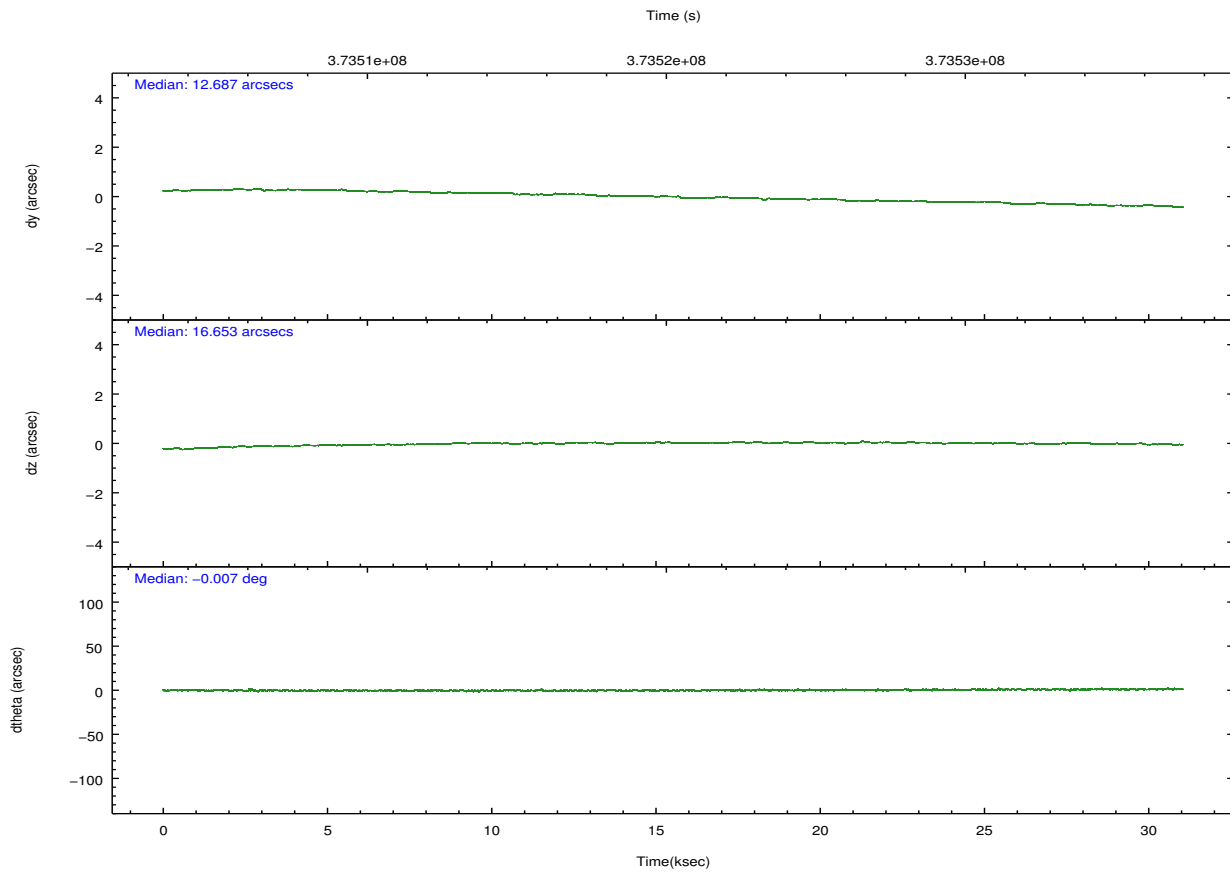
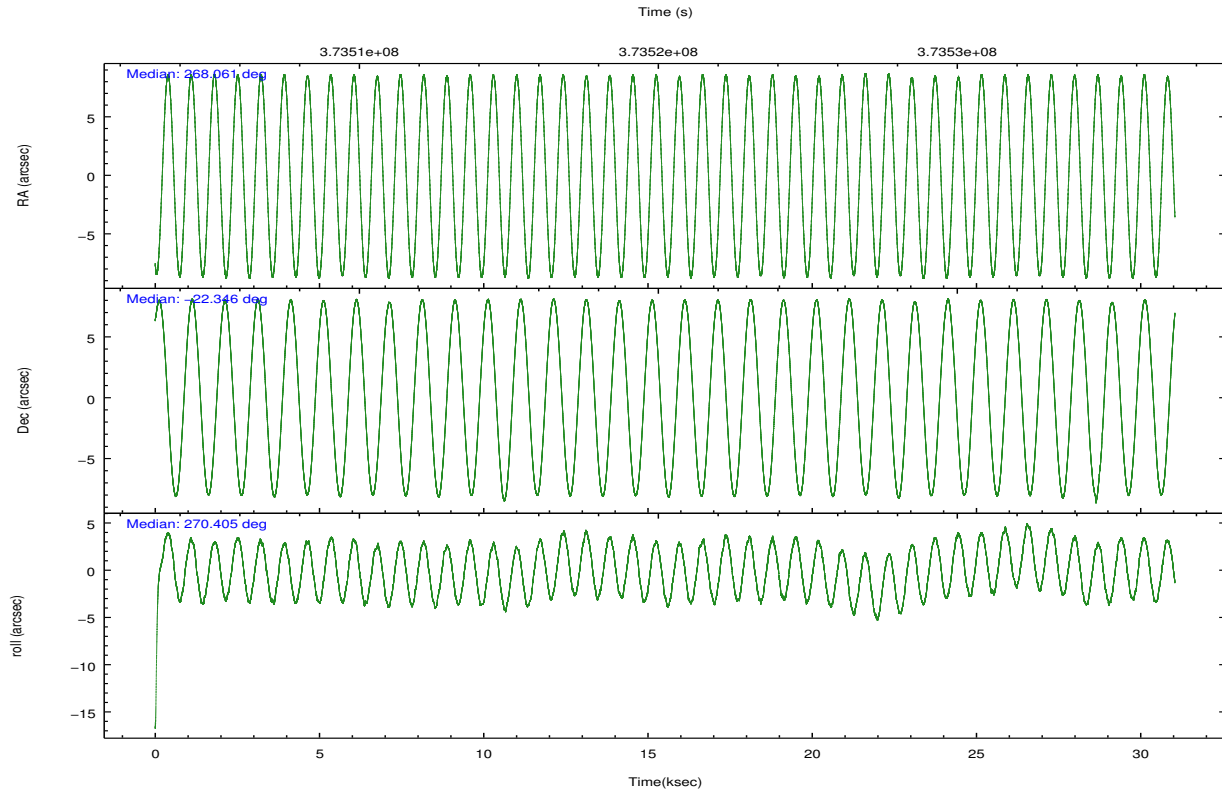
	ccd 4	ccd 5	ccd 6	ccd 7	ccd 8	ccd 9		ccd 4	ccd 5	ccd 6	ccd 7	ccd 8	ccd 9
level 1 events	459214	438896	1023435	987261	854507	453856	grade 0 events	9331	20556	115495	107154	160695	14933
rejected events	402389	191676	405276	229261	524053	382056		2%	4%	11%	10%	18%	3%
rejected %	87%	43%	39%	23%	61%	84%	grade 1 events	206	124	425	1094	736	232
								0%	0%	0%	0%	0%	0%
							grade 2 events	27540	111245	422526	252681	100102	36022
								5%	25%	41%	25%	11%	7%
							grade 3 events	6631	9335	11658	57957	18730	6091
								1%	2%	1%	5%	2%	1%
							grade 4 events	6981	9215	11387	56489	18094	6445
								1%	2%	1%	5%	2%	1%
							grade 5 events	5535	14099	9418	22228	11140	7294
								1%	3%	0%	2%	1%	1%
							grade 6 events	6346	96903	57225	283836	32889	8316
								1%	22%	5%	28%	3%	1%
							grade 7 events	396644	177419	395301	205822	512121	374523
								86%	40%	38%	20%	59%	82%

2.2 Compared Parameters

Parameter	Planned	Actual	Parameter	Planned	Actual
Instrument	ACIS	ACIS	Obspar format version number	7	7
Detector	ACIS-456789	ACIS-456789	Obspar file type	PREDICTED	ACTUAL
Grating	HETG	HETG	Obspar update status	NONE	UPDATED
Data mode	CC33_GRADED	CC33_GRADED	CCD I0 on	N	N
Observation mode	POINTING	POINTING	CCD I1 on	N	N
[deg] Pointing RA	268.045845	268.061156098493	CCD I2 on	N	N
[deg] Pointing Dec	-22.323065	-22.34645652474363	CCD I3 on	N	N
[deg] Pointing Roll	270.245076	270.4075157733762	CCD S0 on	O1	Y
[mm] SIM focus pos	-0.684267	-0.6828225247311905	CCD S1 on	Y	Y
[mm] SIM defocus	0	0.001444936568705701	CCD S2 on	Y	Y
[mm] SIM translation stage pos	-183.992523	-183.9900508222561	CCD S3 on	Y	Y
[mm] SIM translation stage offset	-6.14	-6.142471760751675	CCD S4 on	Y	Y
[s] Observation start time (MET)	373505148.184000	373504393.48747	CCD S5 on	Y	Y
Observation start date	2009-11-01T23:24:42	2009-11-01T23:13:13	Number of optional ACIS chips dropped	0	0
[s] Observation end time (MET)	373535746.184000	373535962.97656	On-chip summing requested	N	N
Observation end date	2009-11-02T07:54:40	2009-11-02T07:59:22	Subarray requested	NONE	NONE
Read mode	CONTINUOUS	CONTINUOUS	Alternating exposures requested	N	N
			[s] Primary exposure time	0.000000	0

2.3 Aspect



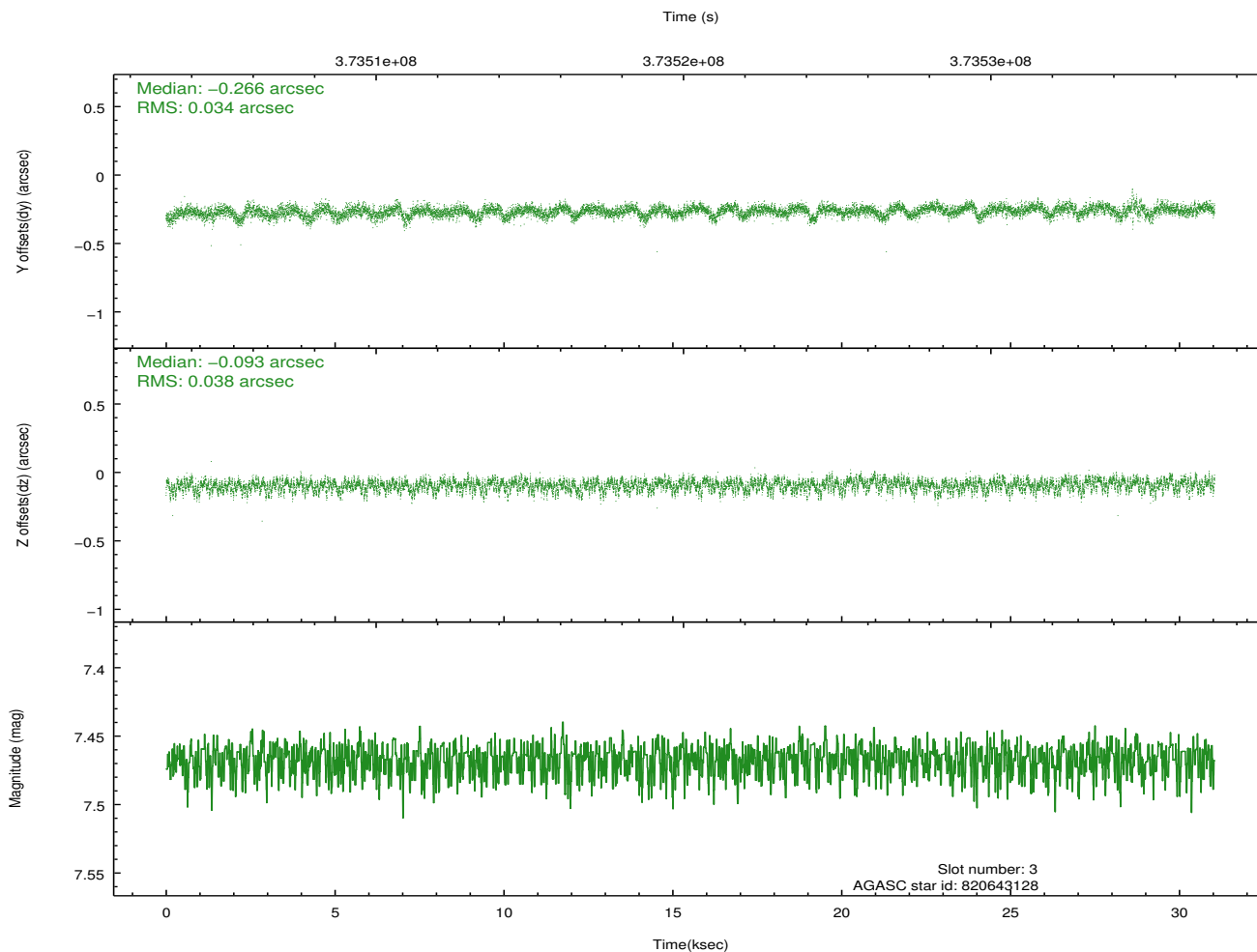
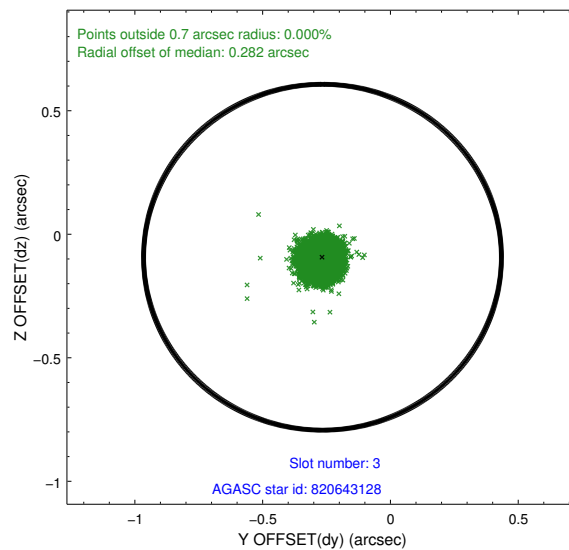
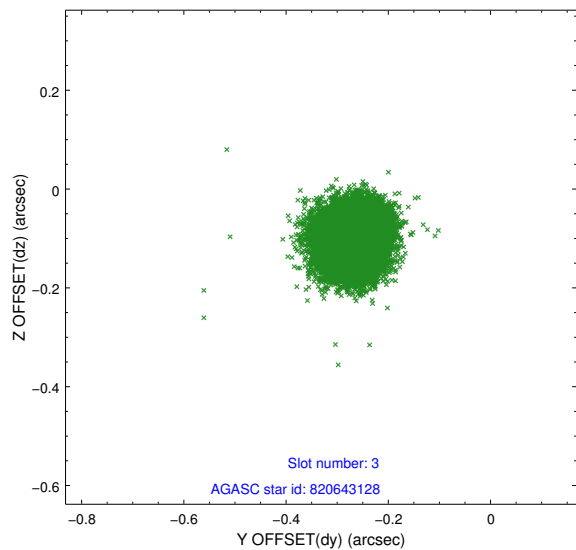


Slot Statistics

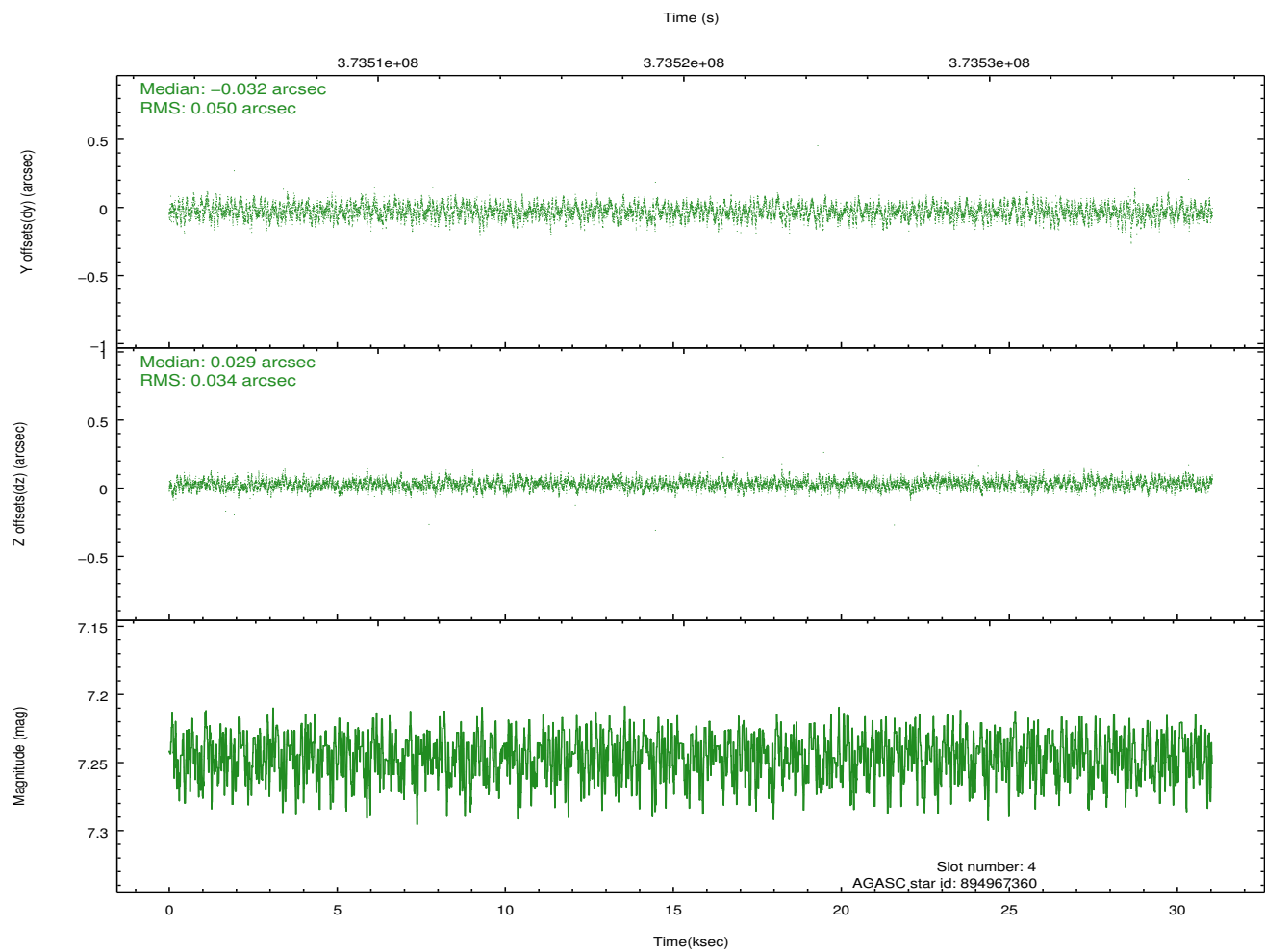
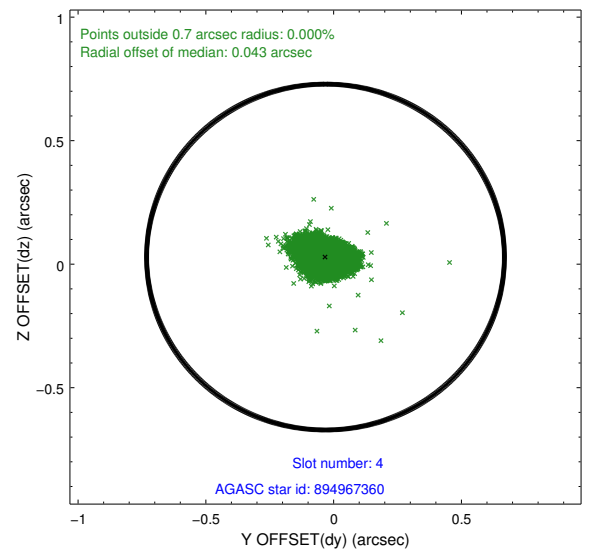
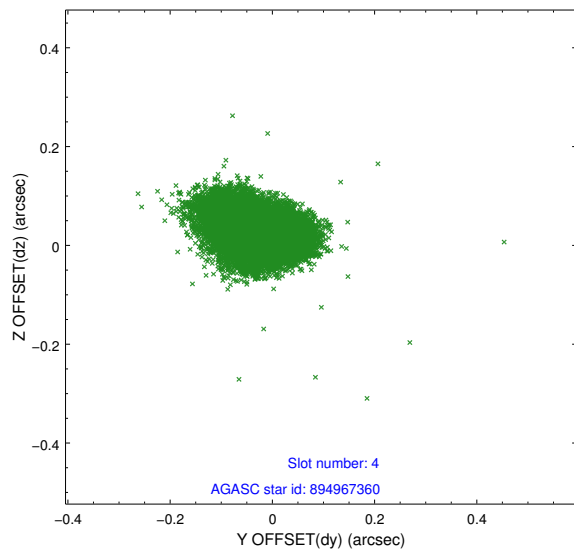
slot	status	id	mag	n_pts	med_dy	med_dz	dr1	dr2	ra	dec	mean_y	mean_z
0	FID	ACIS-S-1	6.93	7572	0.034	0.087	0.011	0.018	0.000000	0.000000	930.98	-1860.18
1	FID	ACIS-S-5	6.98	7571	-0.089	0.047	0.013	0.020	0.000000	0.000000	-1818.15	37.17
2	FID	ACIS-S-6	7.13	7572	0.034	-0.123	0.007	0.012	0.000000	0.000000	396.40	681.09
3	GUIDE	820643128	7.47	15138	-0.266	-0.093	0.054	0.087	267.699048	-21.791174	-1918.33	-1151.28
4	GUIDE	894967360	7.25	15141	-0.032	0.029	0.064	0.104	267.782247	-22.921004	2150.57	-882.73
5	GUIDE	896671000	8.64	15133	0.172	0.263	0.067	0.108	268.750839	-22.981137	2385.19	2326.84
6	GUIDE	896671704	7.87	15143	-0.204	-0.062	0.064	0.101	268.307622	-22.536738	773.95	867.27
7	GUIDE	896672784	9.26	15116	0.331	-0.136	0.081	0.134	268.139856	-22.666371	1238.02	307.01

2.4 Star Slots

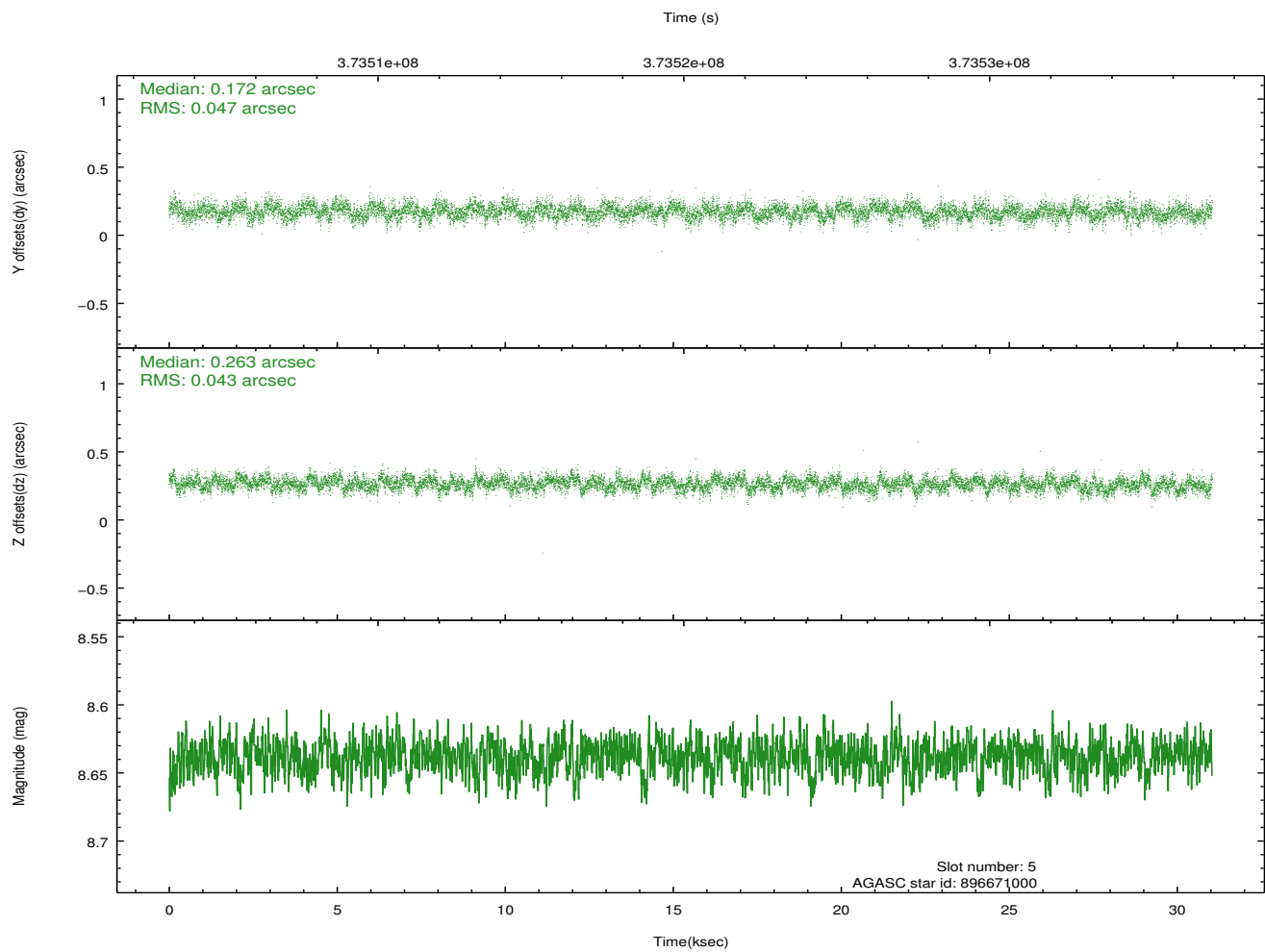
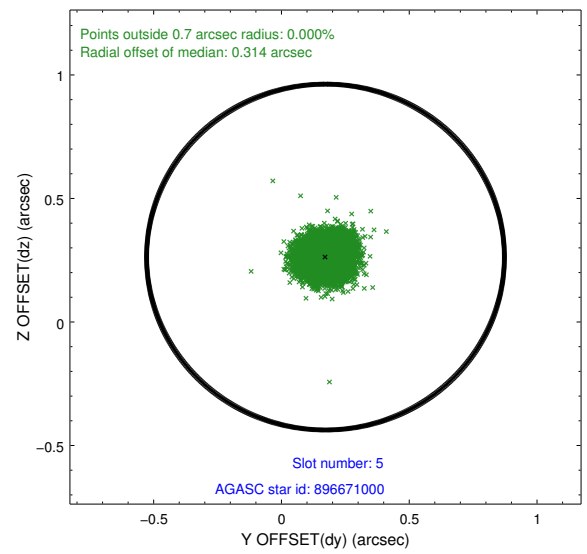
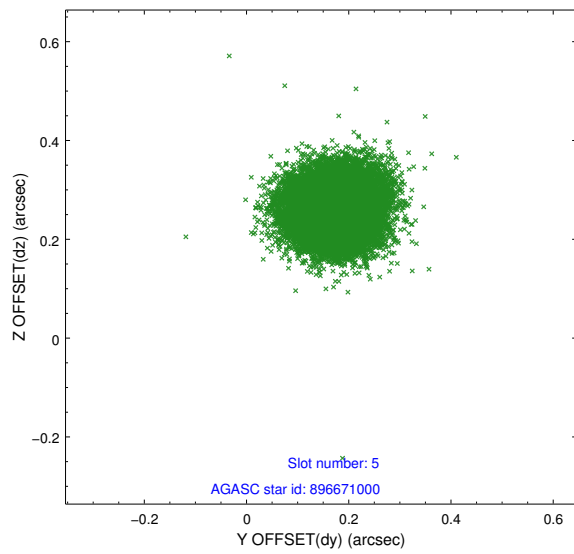
2.4.1 Slot 3



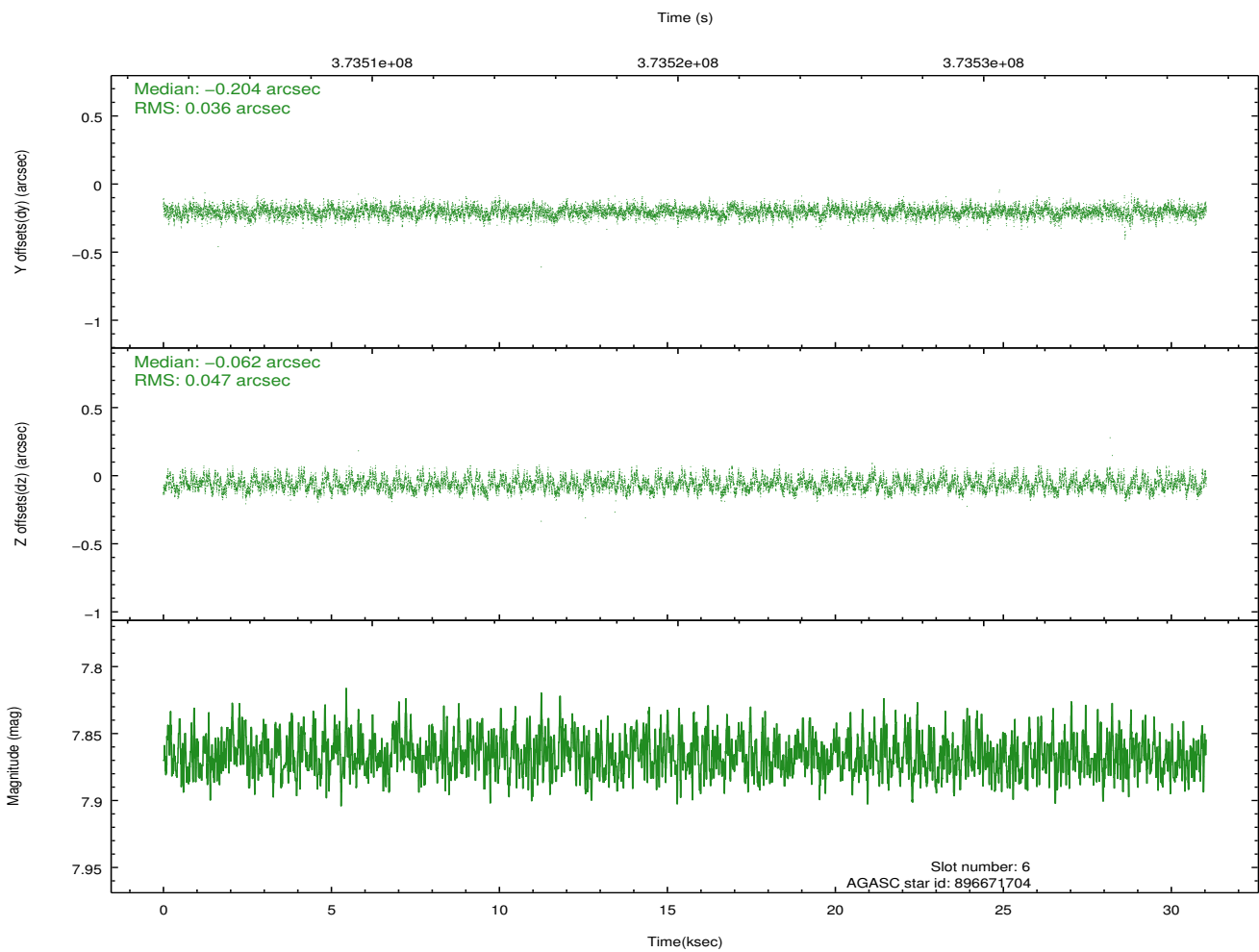
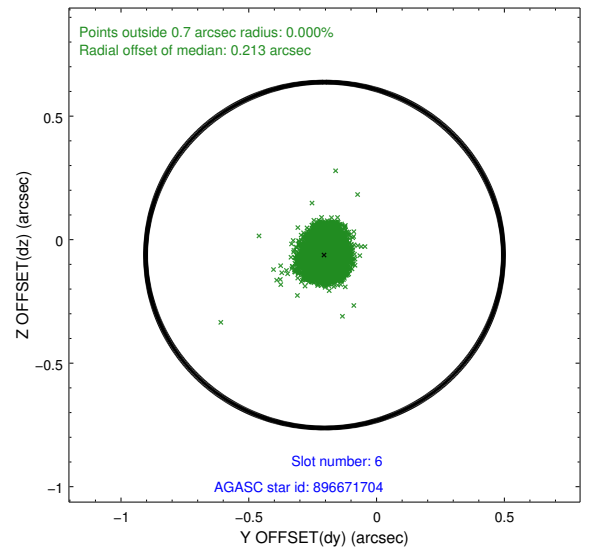
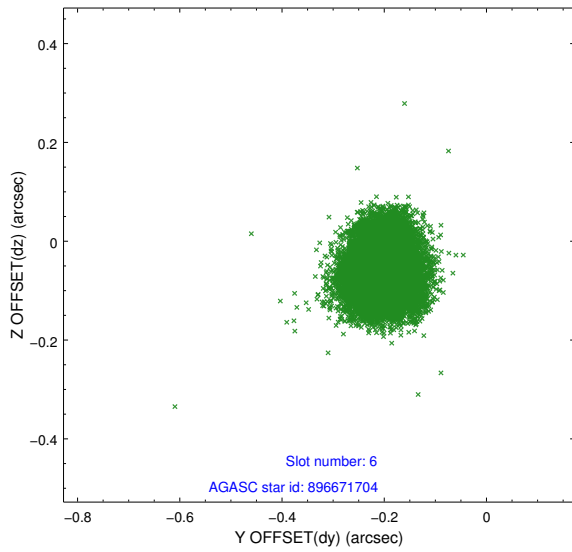
2.4.2 Slot 4



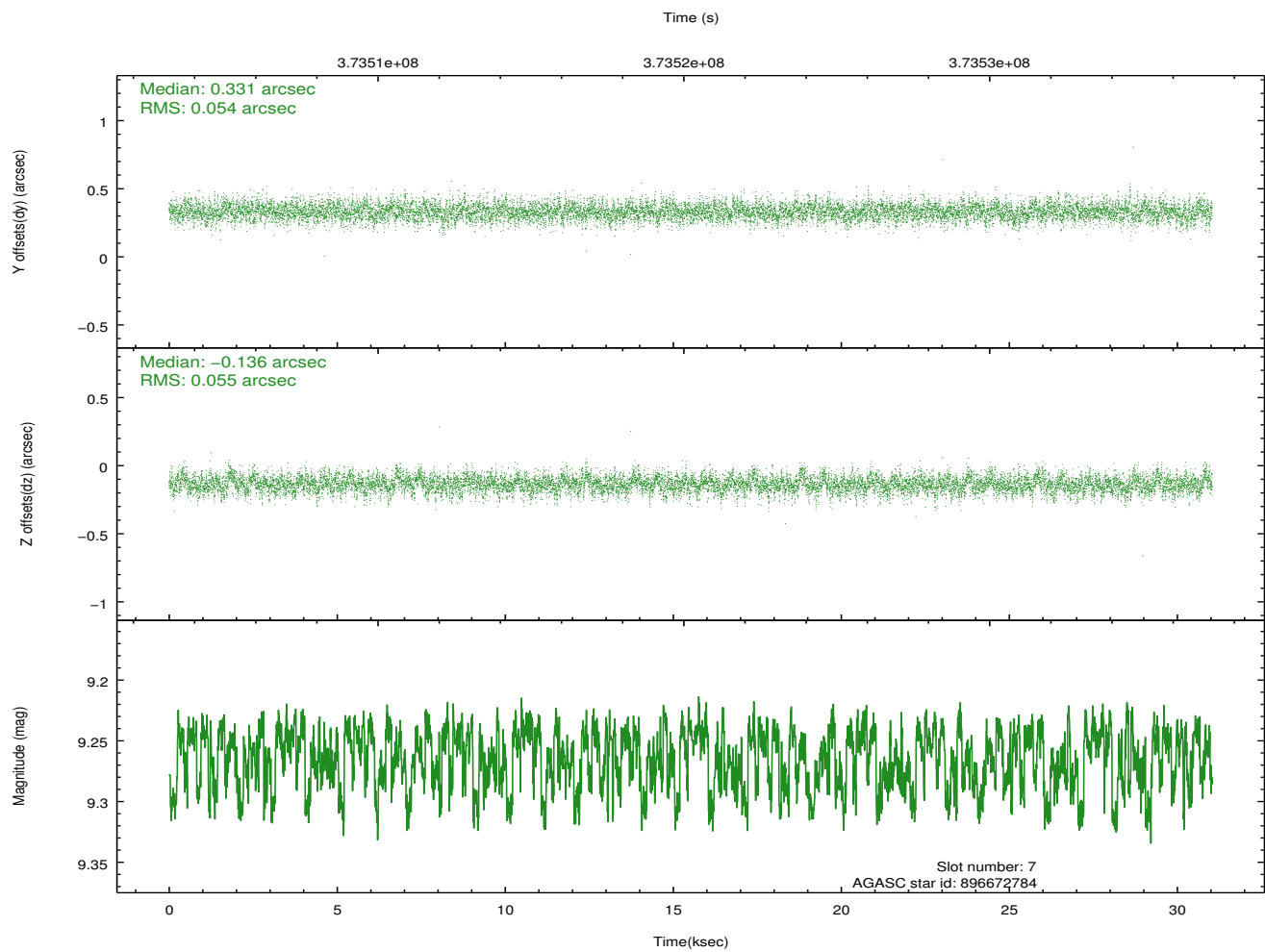
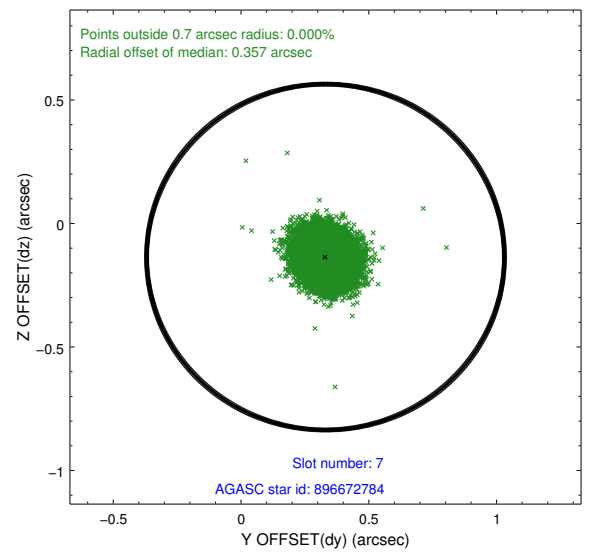
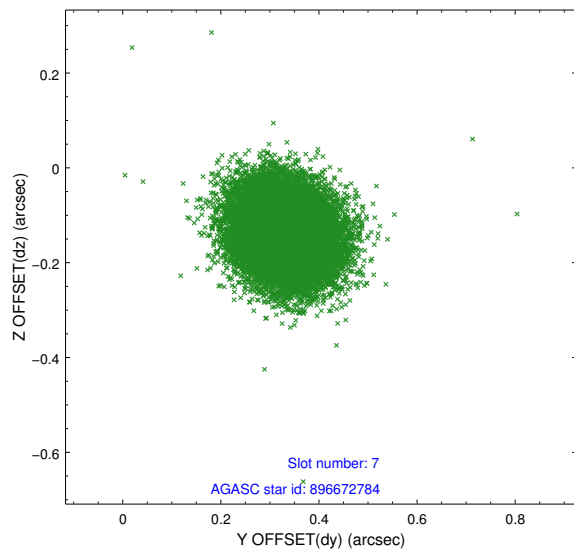
2.4.3 Slot 5



2.4.4 Slot 6

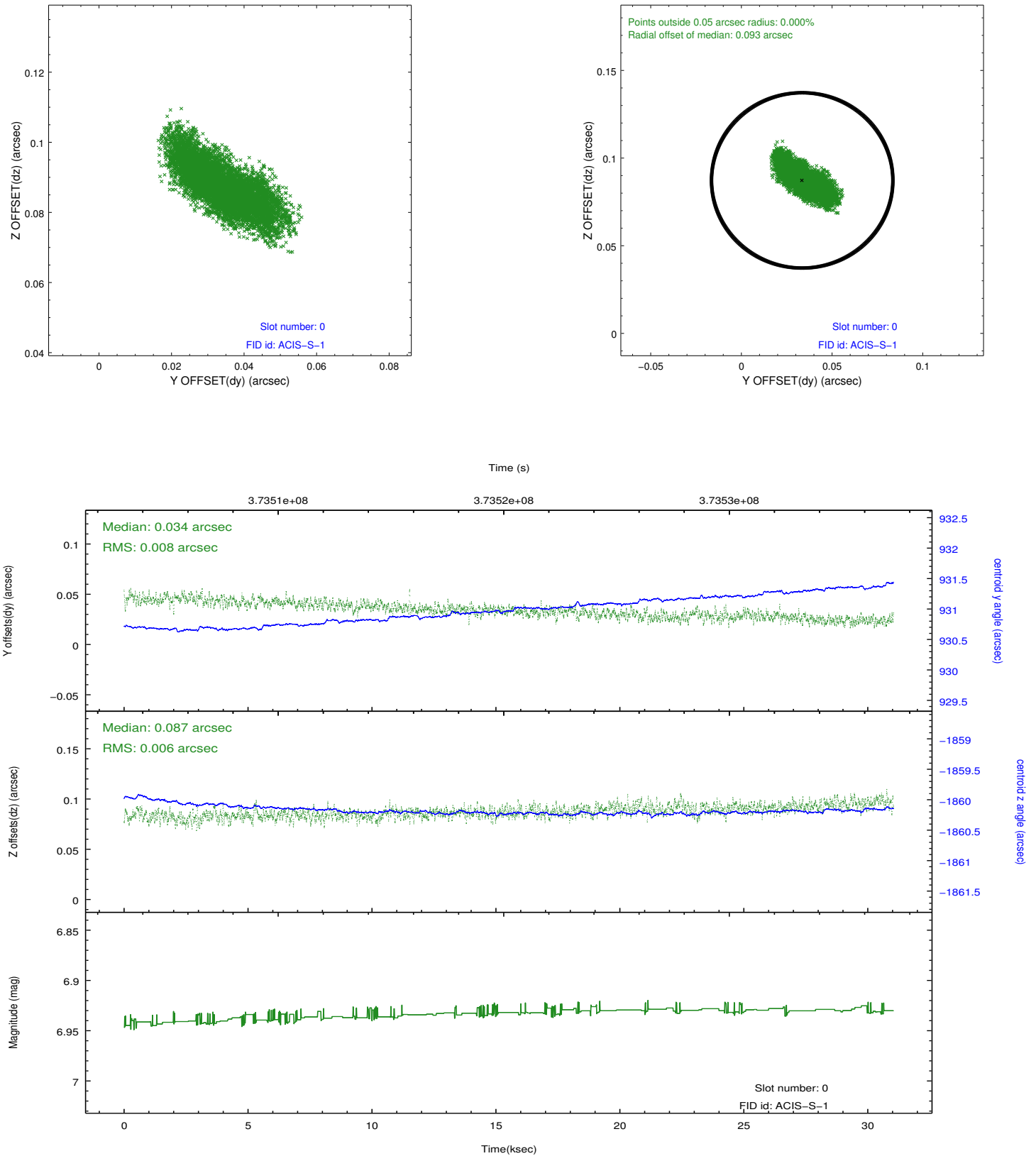


2.4.5 Slot 7

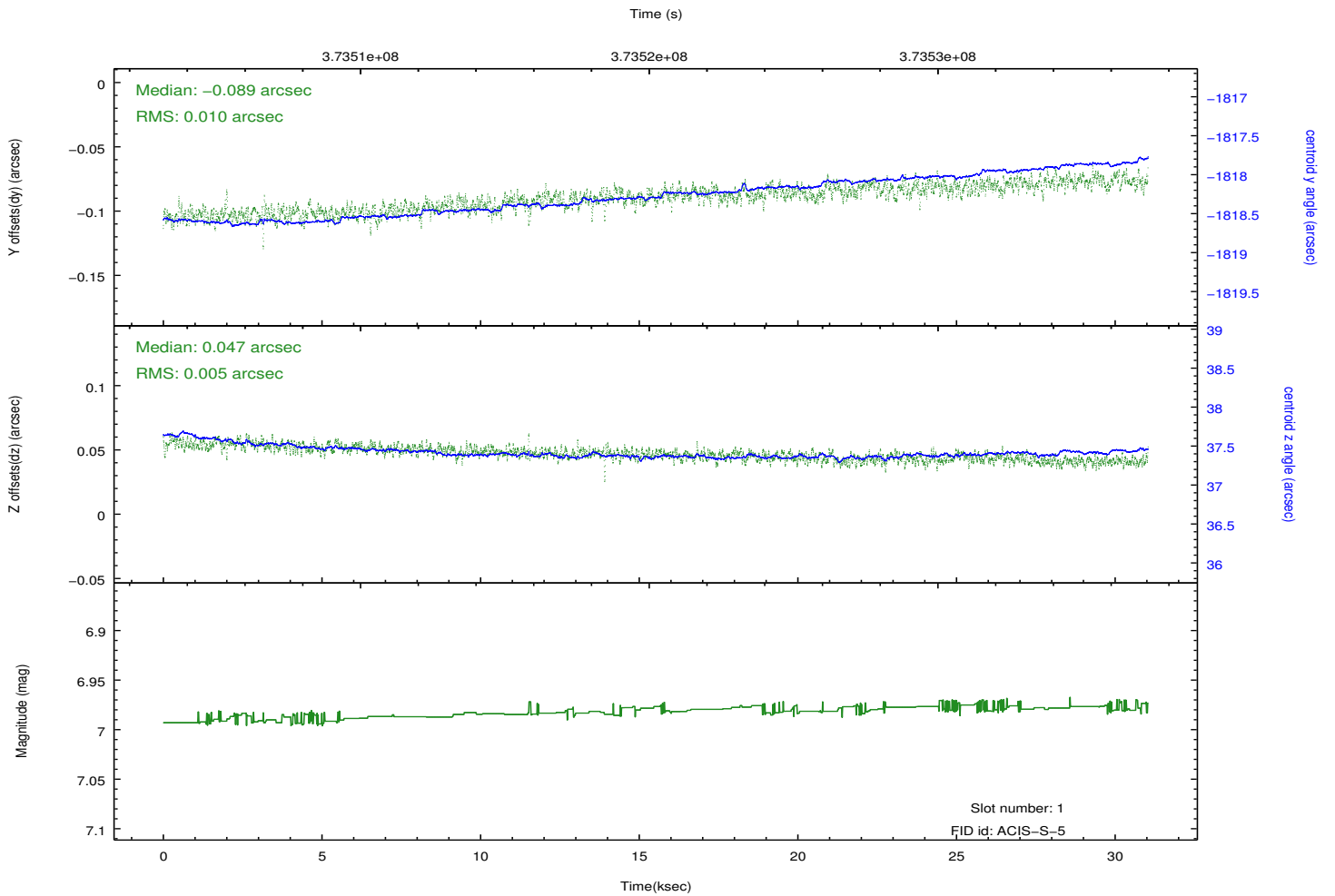
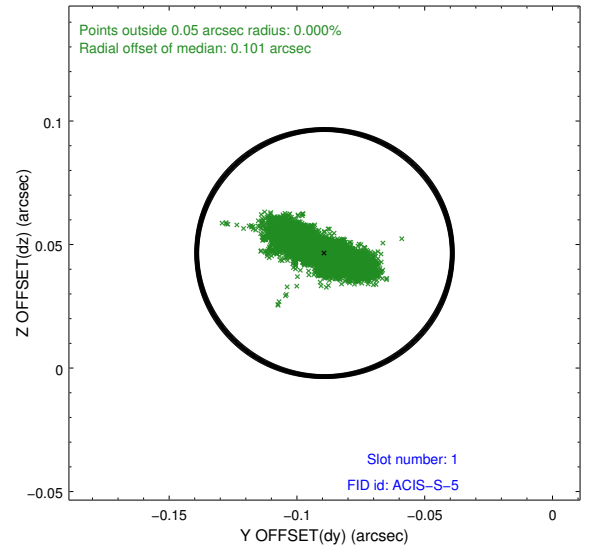
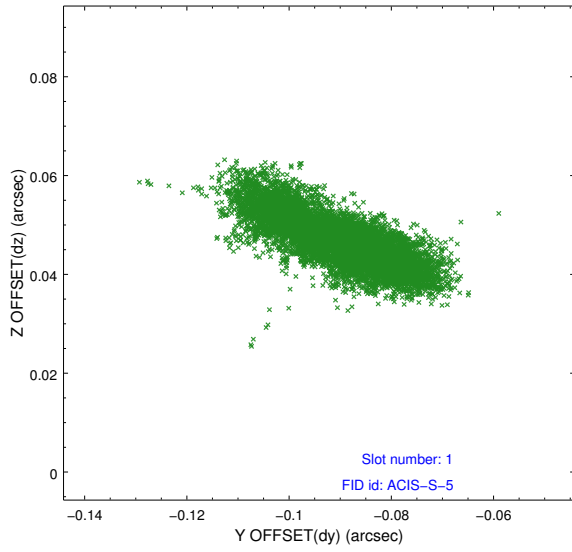


2.5 FID Slots

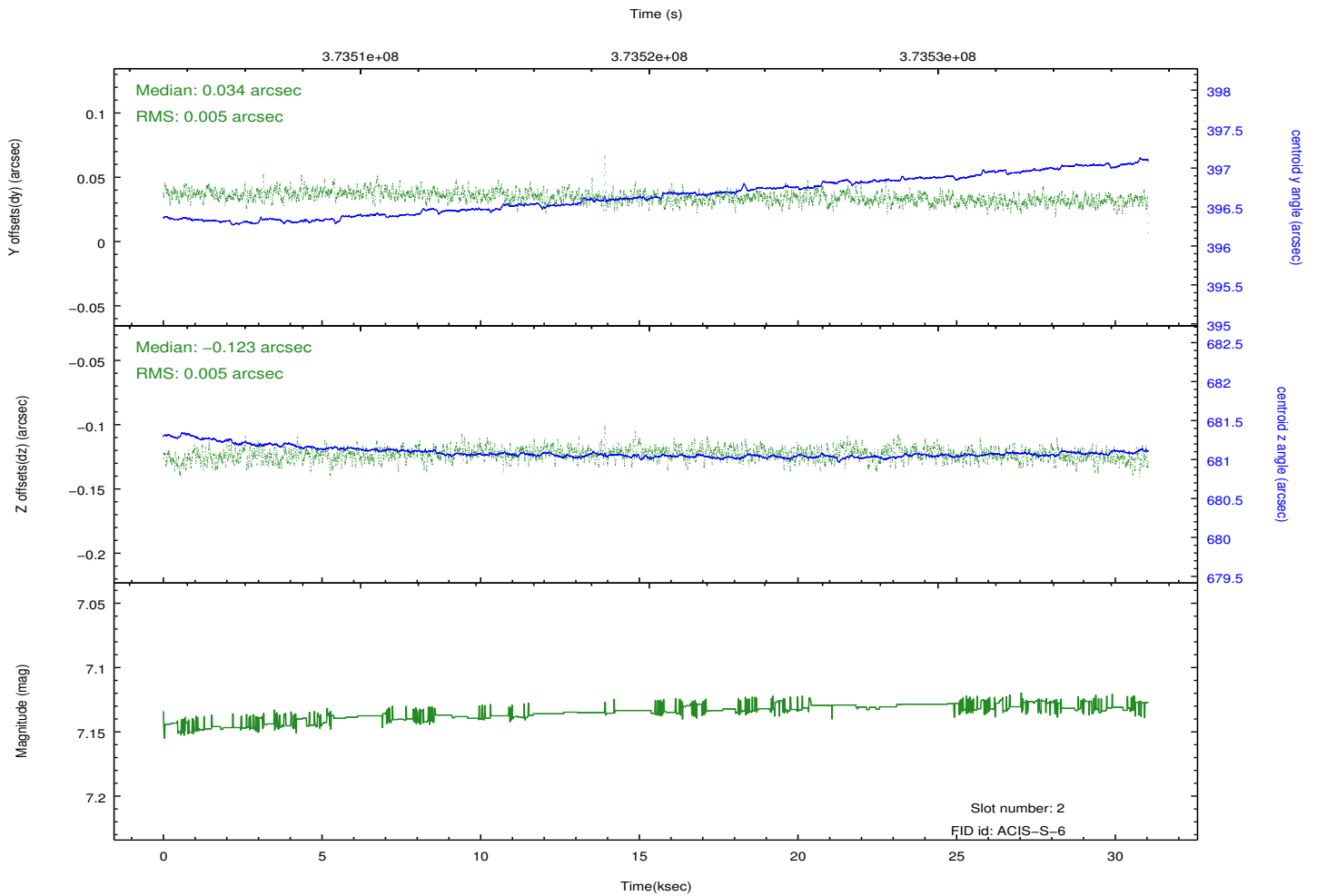
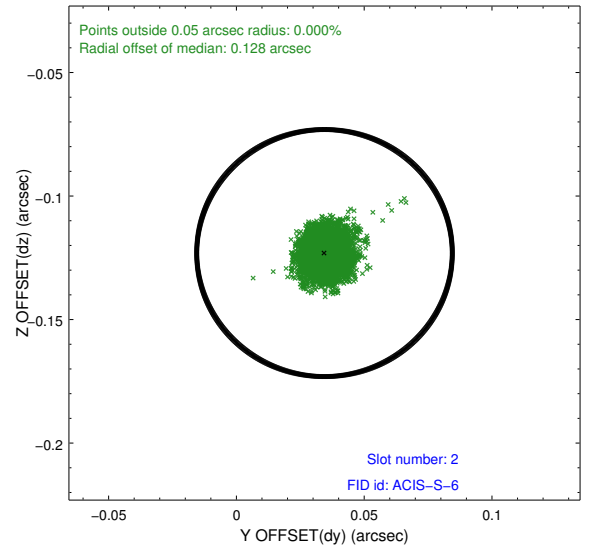
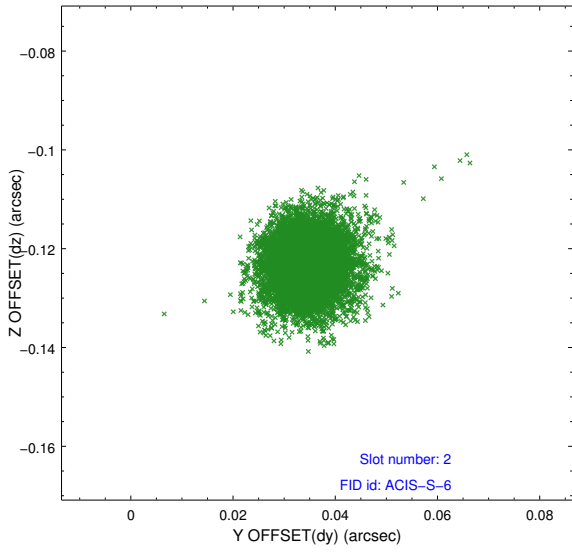
2.5.1 Slot 0



2.5.2 Slot 1

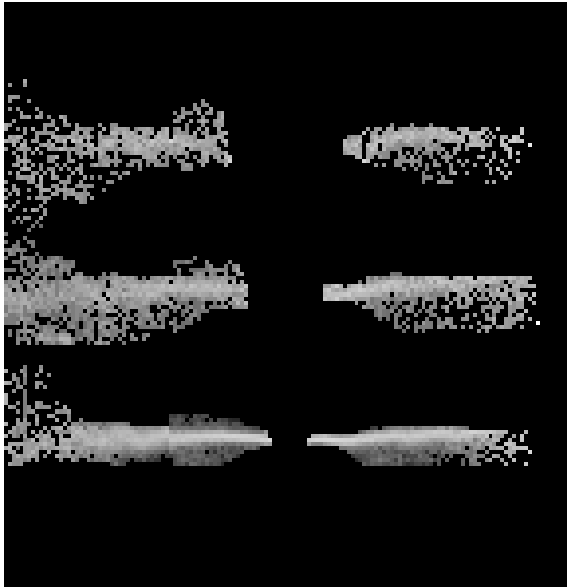


2.5.3 Slot 2

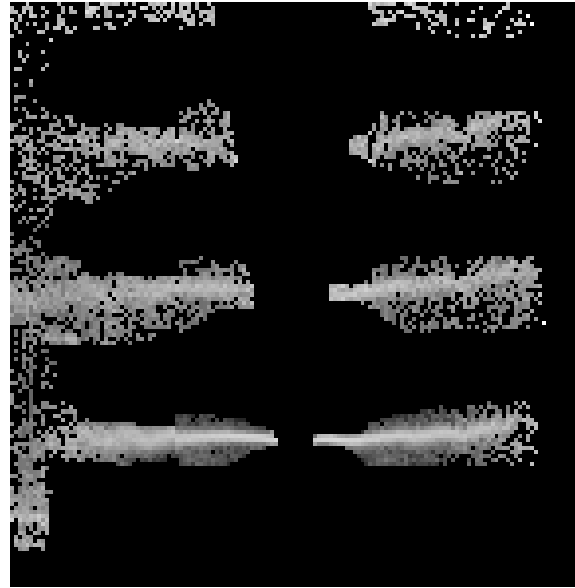


3 Gratings

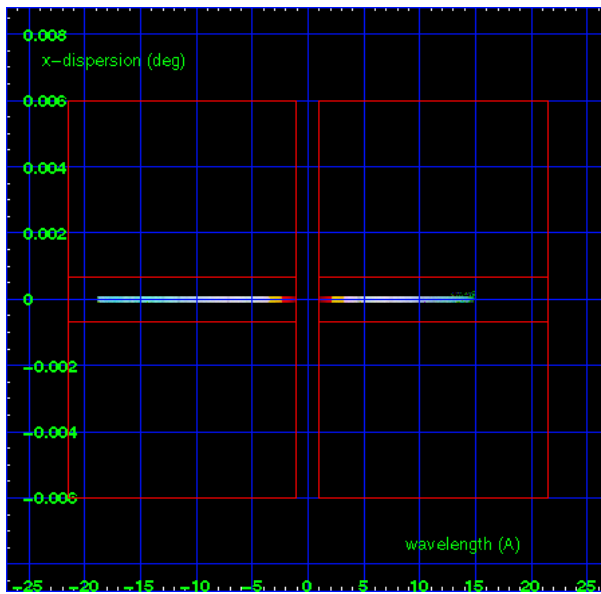
3.1 HEG Arm



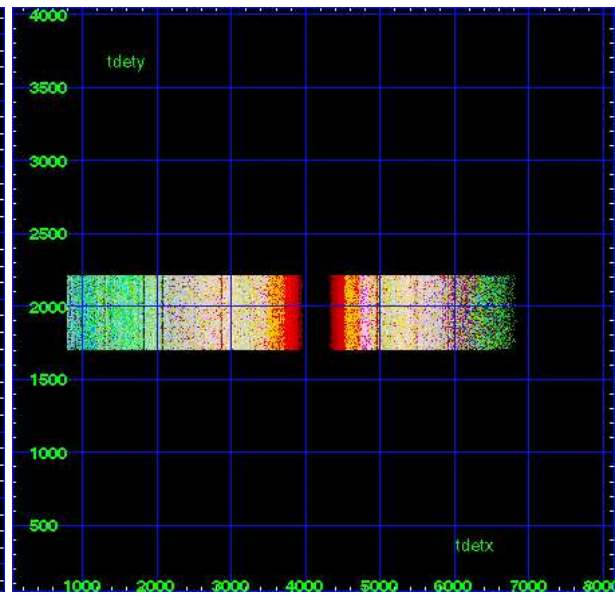
HEG Order Sort 123



HEG Order Sort ALL

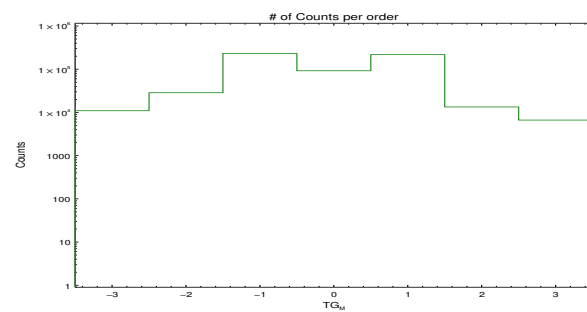


Spot Image HEG

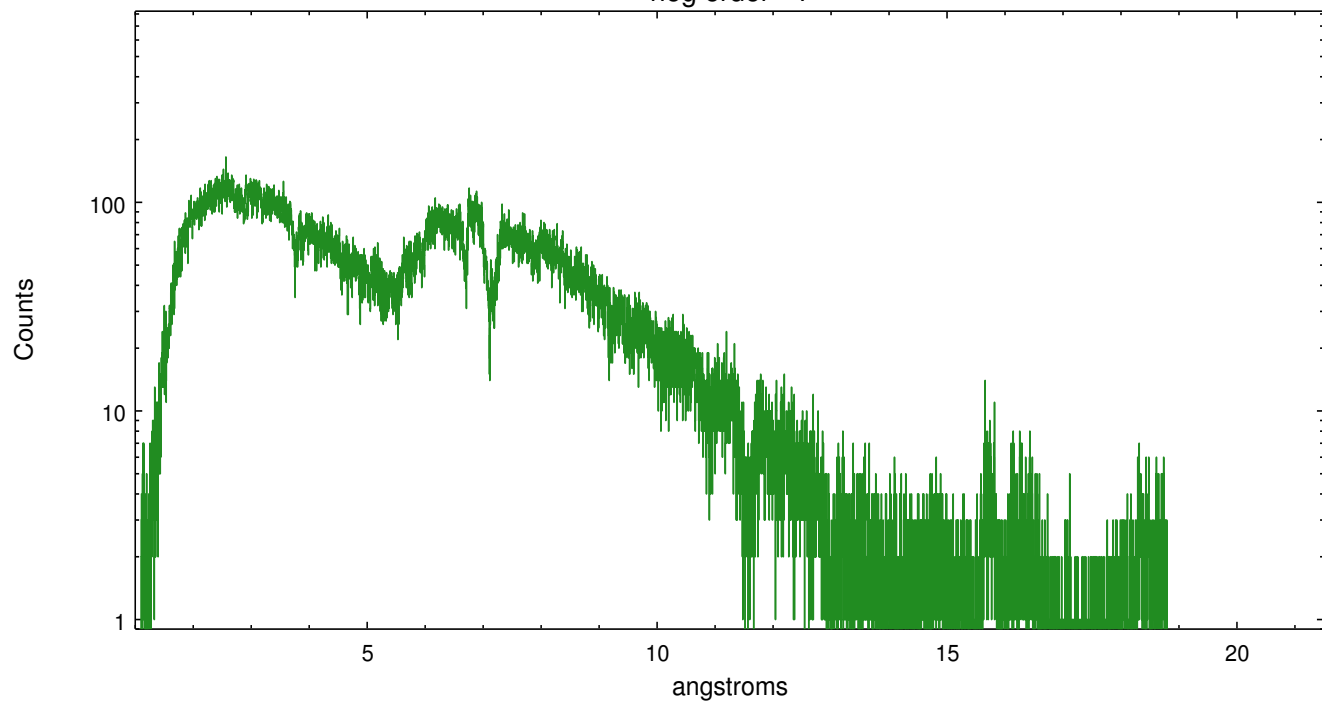


Full Detector HEG

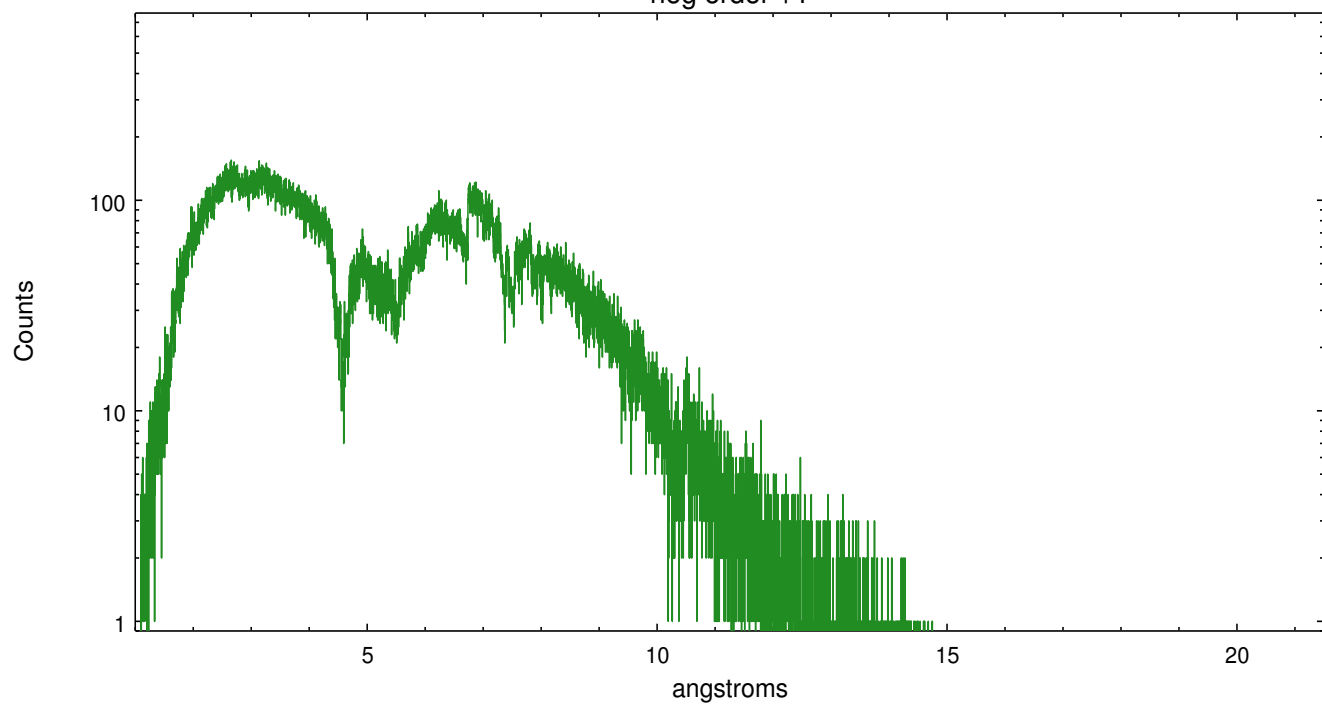
	order -3	order -2	order -1	order 0	order 1	order 2	order 3
Events	10964	28626	231855	92183	217873	13405	6651



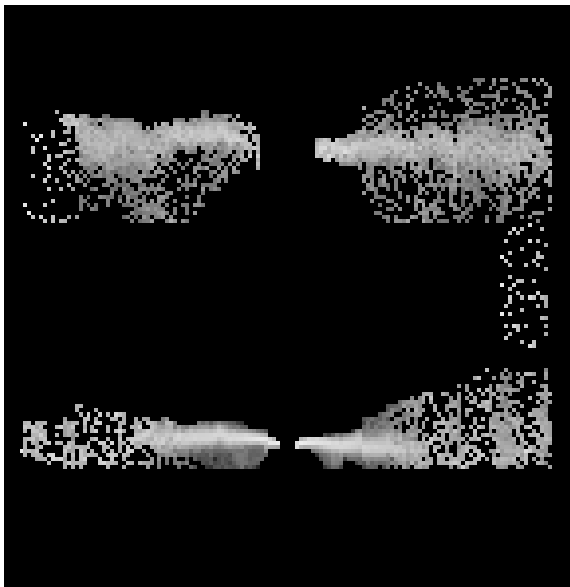
heg order -1



heg order +1



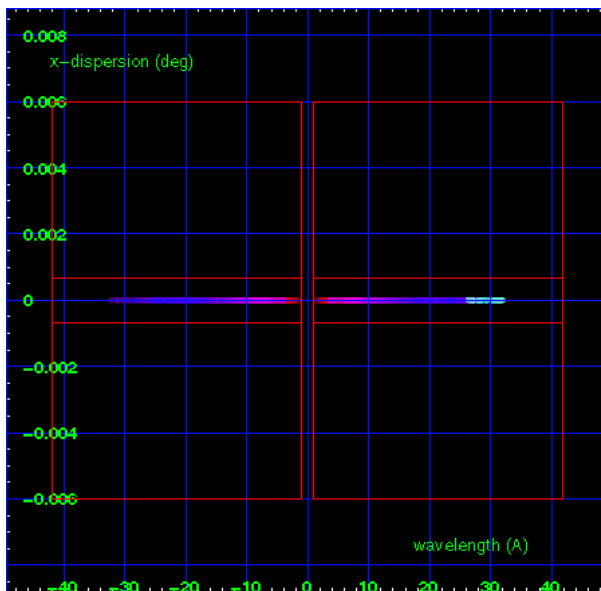
3.2 MEG Arm



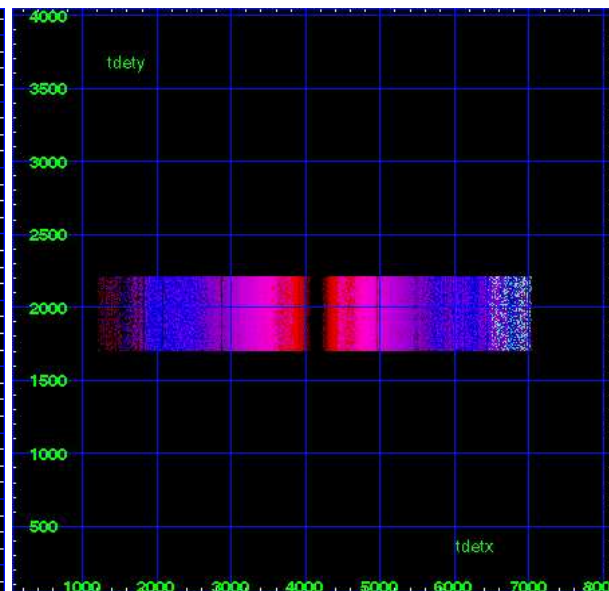
MEG Order Sort 123



MEG Order Sort ALL

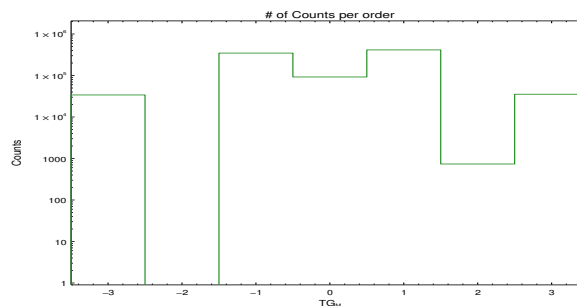


Spot Image MEG

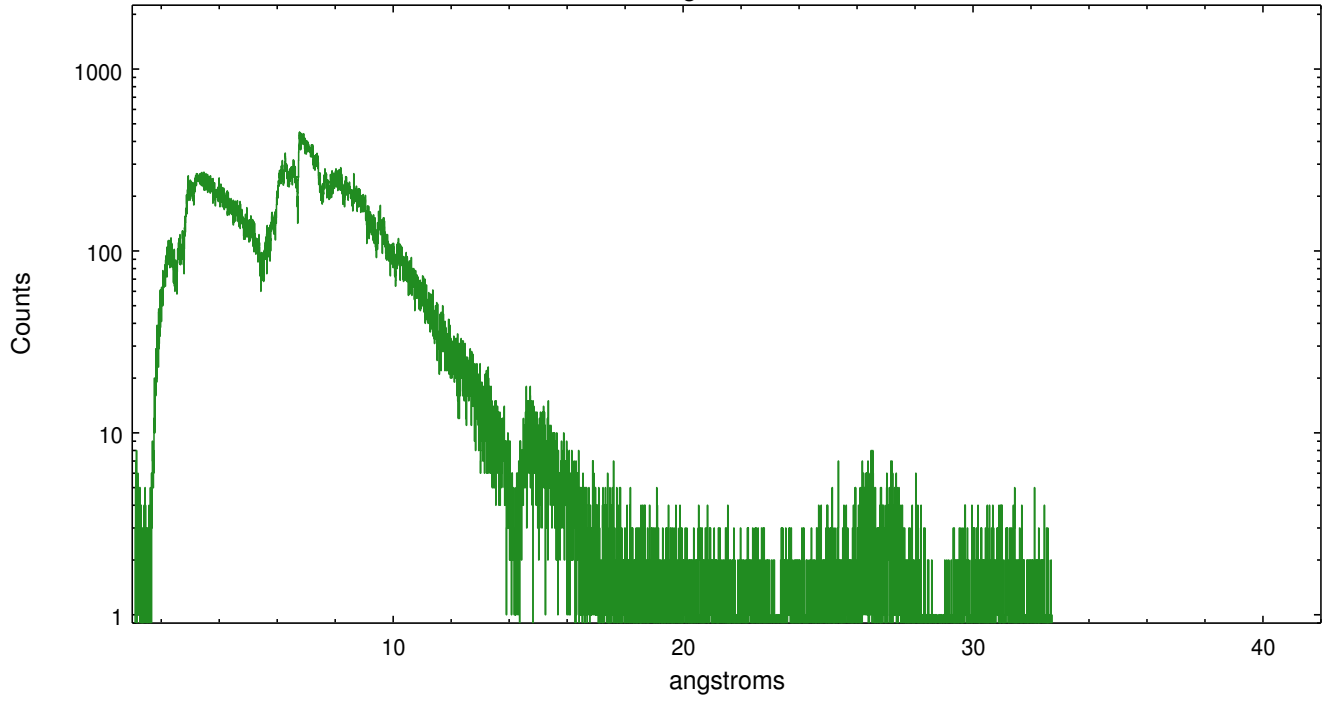


Full Detector MEG

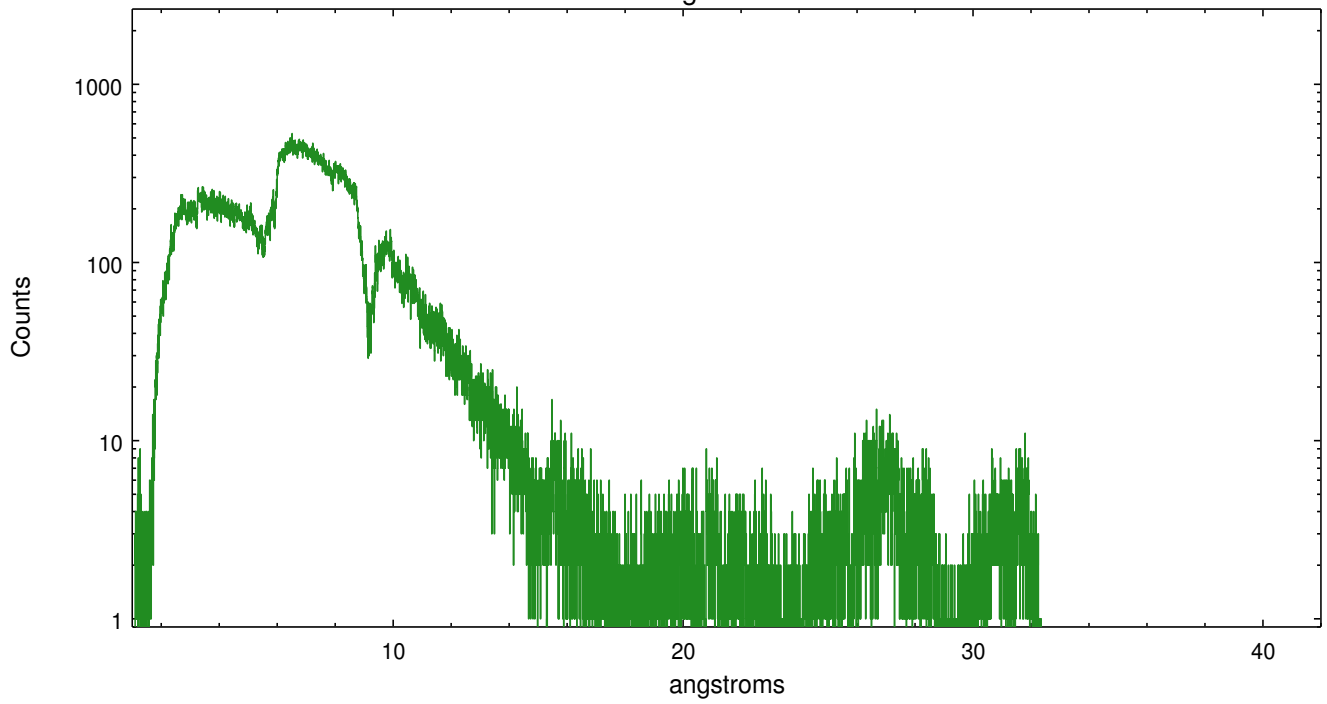
	order -3	order -2	order -1	order 0	order 1	order 2	order 3
Events	34009	0	347055	92183	414498	737	35359



meg order -1



meg order +1



A Summary

A.1 Status

V&V Scientist	David Huenemoerder
V&V Date (YYYY-MM-DD)	2012.06.18
V&V Edition	1
V&V Disposition and Status	OK
V&V Charge Time	30.64725

A.2 Comments