

V&V Reference Report

L2 ASCDS Version : 8.4.4

Observation 10249 - L2 Version 2
Chandra X-Ray Center

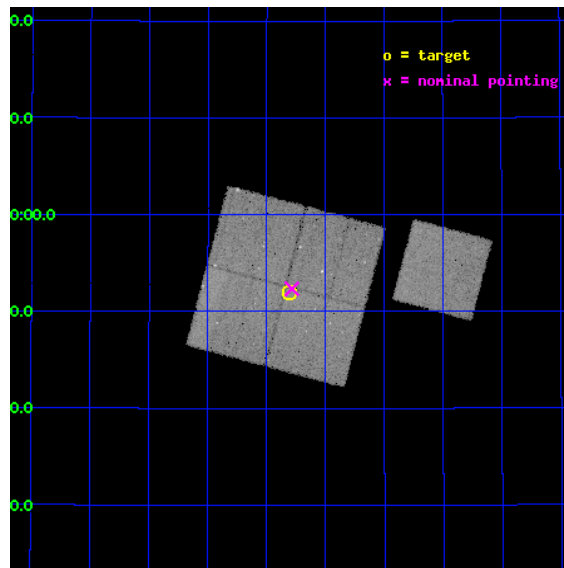
L2 Processing Date : May 29 2012

Contents

1	Front	2
2	OBI	3
2.1	OBI	3
2.1.1	Images	3
2.1.2	Bias	3
2.1.3	Parameters	4
2.1.4	Events	4
2.2	Compared Parameters	5
2.3	Aspect	6
2.4	Star Slots	9
2.4.1	Slot 3	9
2.4.2	Slot 4	10
2.4.3	Slot 5	11
2.4.4	Slot 6	12
2.4.5	Slot 7	13
2.5	FID Slots	14
2.5.1	Slot 0	14
2.5.2	Slot 1	15
2.5.3	Slot 2	16
A	Summary	17
A.1	Status	17
A.2	Comments	17

1 Front

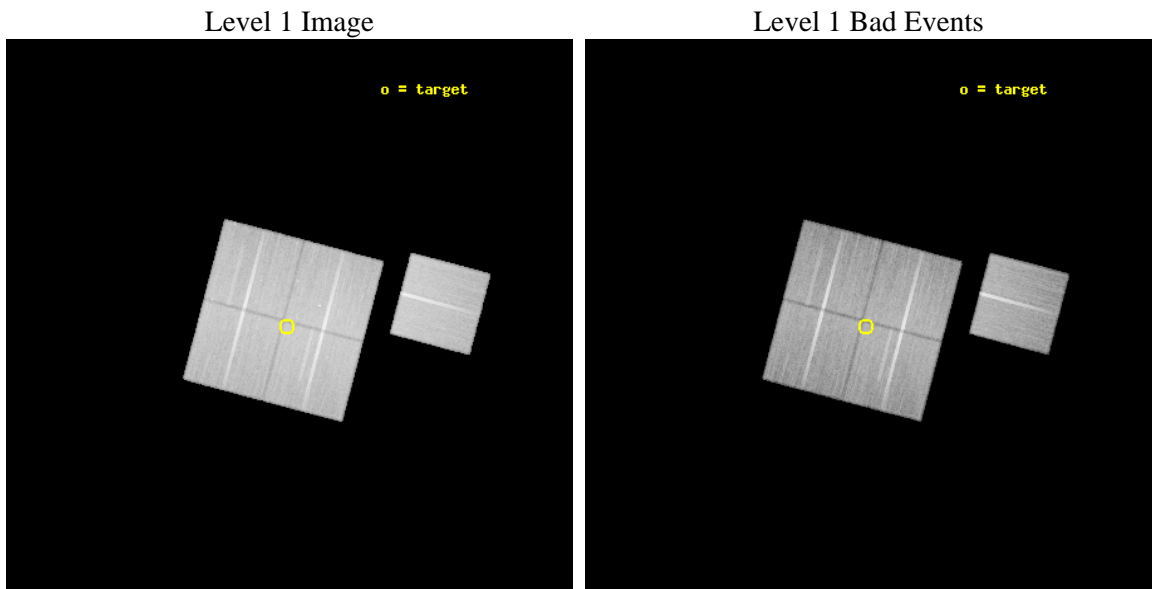
seq_num	701792	Sequence number
obs_id	10249	Observation id
title	The multi-faceted X-ray activity of low-redshift active galaxies	P
observer	Prof Mark Birkinshaw	Principal investigator
object	3C 236 C	Source name
dtcycle	0	
cycle	P	events from which exps? Prim/Second/Both
ra_targ	151.576667	Observer's specified target RA [deg]
dec_targ	34.865667	Observer's specified target Dec [deg]
ra_nom	151.5714460528	Nominal RA [deg]
dec_nom	34.872518270629	Nominal Dec [deg]
roll_nom	104.78079194723	Nominal Roll [deg]
revision	2	Processing version of data
ontime	41037.718334973	Sum of GTIs [s]
livetime	40501.530333398	Livetime [s]
ontime0	41044.000315666	Sum of GTIs [s]
ontime1	41037.718285084	Sum of GTIs [s]
ontime2	41037.718335032	Sum of GTIs [s]
ontime3	41037.718334973	Sum of GTIs [s]
ontime6	41034.577254832	Sum of GTIs [s]
l2events	149877	Number of level 2 events



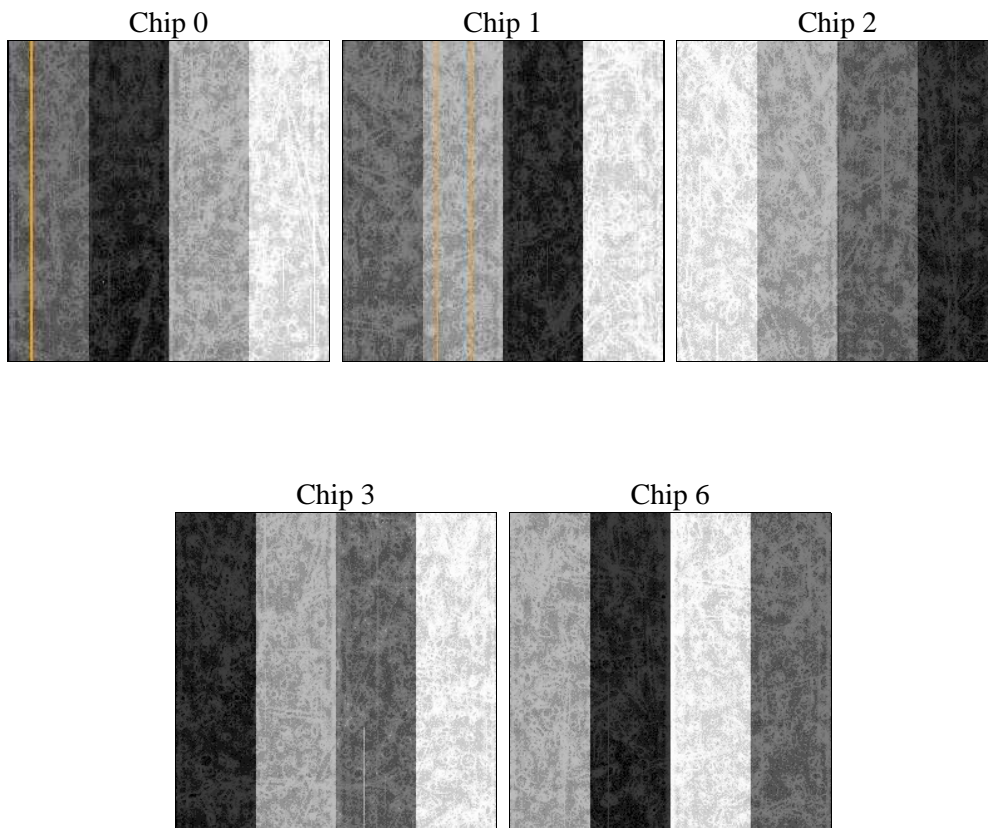
2 OBI

2.1 OBI

2.1.1 Images



2.1.2 Bias



2.1.3 Parameters

obi_num	0	Obi number	sched_exp_time	41003.000000	[s] Scheduled observation exposure time
ascdsver	8.4.4	Processing system revision	ontime	41037.718334973	Sum of GTIs [s]
caldbver	4.4.9	 	ontime0	41044.000315666	Sum of GTIs [s]
date	2012-05-29T02:40:36	Date and time of file creation	ontime1	41037.718285084	Sum of GTIs [s]
revision	2	Processing version of data	ontime2	41037.718335032	Sum of GTIs [s]
			ontime3	41037.718334973	Sum of GTIs [s]
			ontime6	41034.577254832	Sum of GTIs [s]
			l1events	1694972	Number of level 1 events

2.1.4 Events

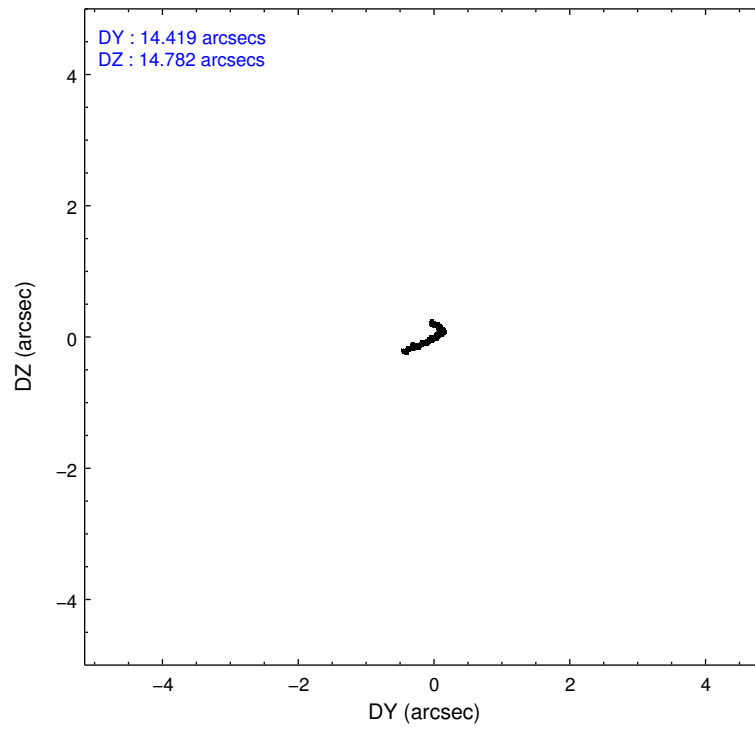
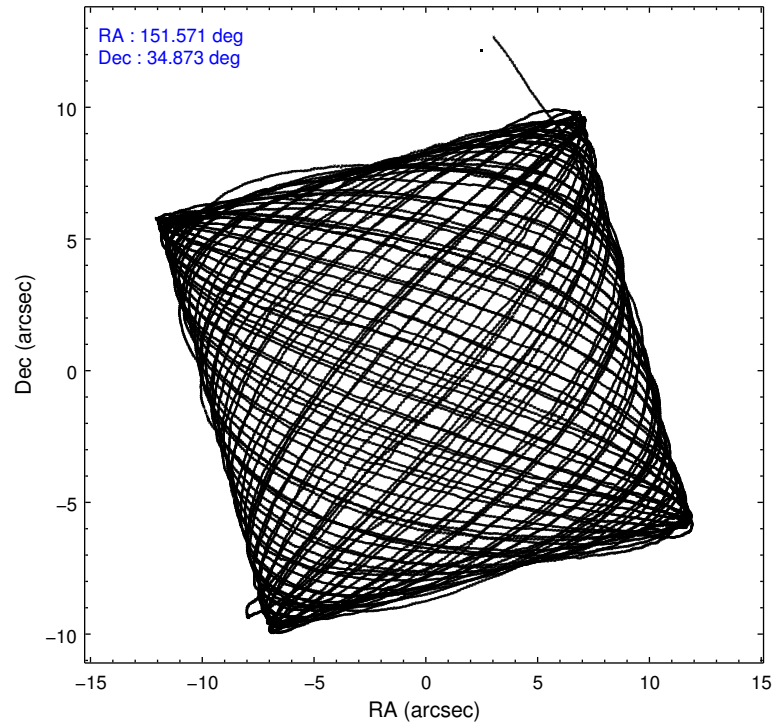
	ccd 0	ccd 1	ccd 2	ccd 3	ccd 6
level 1 events	324194	322025	359157	342402	347194
rejected events	288297	282331	323425	309191	311932
rejected %	88%	87%	90%	90%	89%

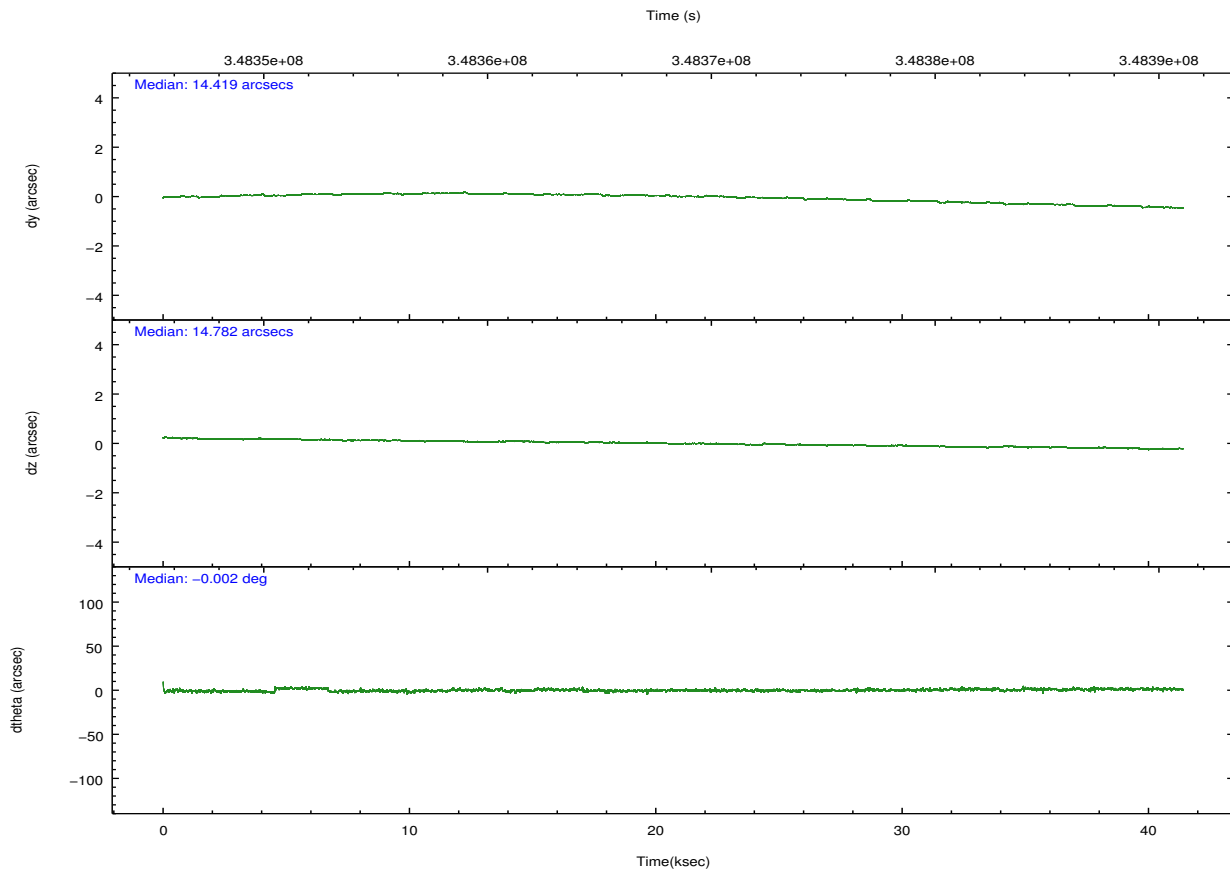
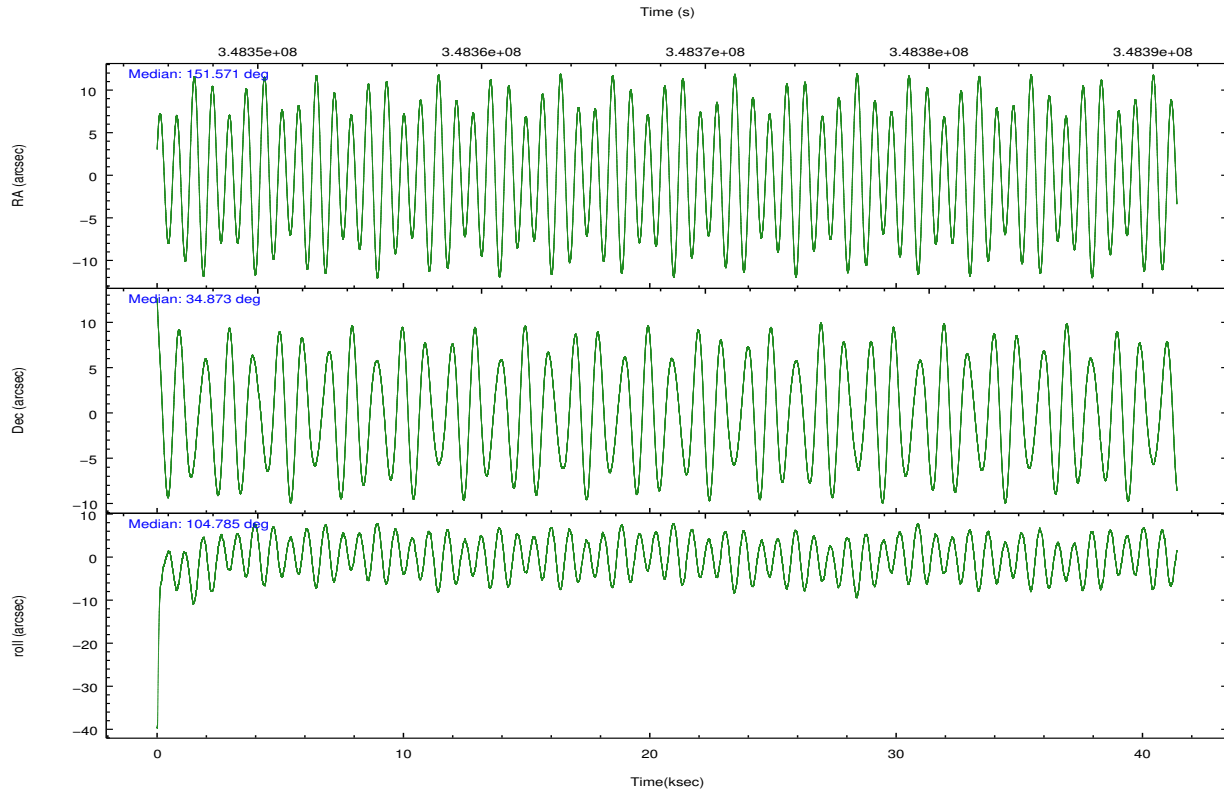
	ccd 0	ccd 1	ccd 2	ccd 3	ccd 6
grade 0 events	12882	14530	13360	11654	12183
	3%	4%	3%	3%	3%
grade 1 events	197	189	235	206	157
	0%	0%	0%	0%	0%
grade 2 events	8492	8967	8509	7239	7925
	2%	2%	2%	2%	2%
grade 3 events	3928	4224	3663	3709	3769
	1%	1%	1%	1%	1%
grade 4 events	3602	4140	3713	3767	3808
	1%	1%	1%	1%	1%
grade 5 events	12683	13542	11764	14267	13856
	3%	4%	3%	4%	3%
grade 6 events	6998	7836	6494	6846	7580
	2%	2%	1%	1%	2%
grade 7 events	275412	268597	311419	294714	297916
	84%	83%	86%	86%	85%

2.2 Compared Parameters

Parameter	Planned	Actual	Parameter	Planned	Actual
Instrument	ACIS	ACIS	Obspar format version number	7	7
Detector	ACIS-01236	ACIS-01236	Obspar file type	PREDICTED	ACTUAL
Grating	NONE	NONE	Obspar update status	NONE	UPDATED
Data mode	VFAINT	VFAINT	CCD I0 on	Y	Y
Observation mode	POINTING	POINTING	CCD I1 on	Y	Y
[deg] Pointing RA	151.595141	151.5714460527961	CCD I2 on	Y	Y
[deg] Pointing Dec	34.853074	34.87251827062946	CCD I3 on	Y	Y
[deg] Pointing Roll	104.558568	104.7807919472323	CCD S0 on	N	N
[mm] SIM focus pos	-0.782348	-0.7809083437167272	CCD S1 on	N	N
[mm] SIM defocus	0	0.001439871863259334	CCD S2 on	O1	Y
[mm] SIM translation stage pos	-233.592463	-233.5874344608287	CCD S3 on	N	N
[mm] SIM translation stage offset	0	-0.005018542100998502	CCD S4 on	N	N
[s] Observation start time (MET)	348347980.184000	348346944.95662	CCD S5 on	N	N
Observation start date	2009-01-14T19:18:34	2009-01-14T19:02:24	Number of optional ACIS chips dropped	0	0
[s] Observation end time (MET)	348388983.184000	348389984.70875	On-chip summing requested	N	N
Observation end date	2009-01-15T06:41:57	2009-01-15T06:59:44	Subarray requested	NONE	NONE
Read mode	TIMED	TIMED	Alternating exposures requested	N	N
			[s] Primary exposure time	0.000000	3.1

2.3 Aspect



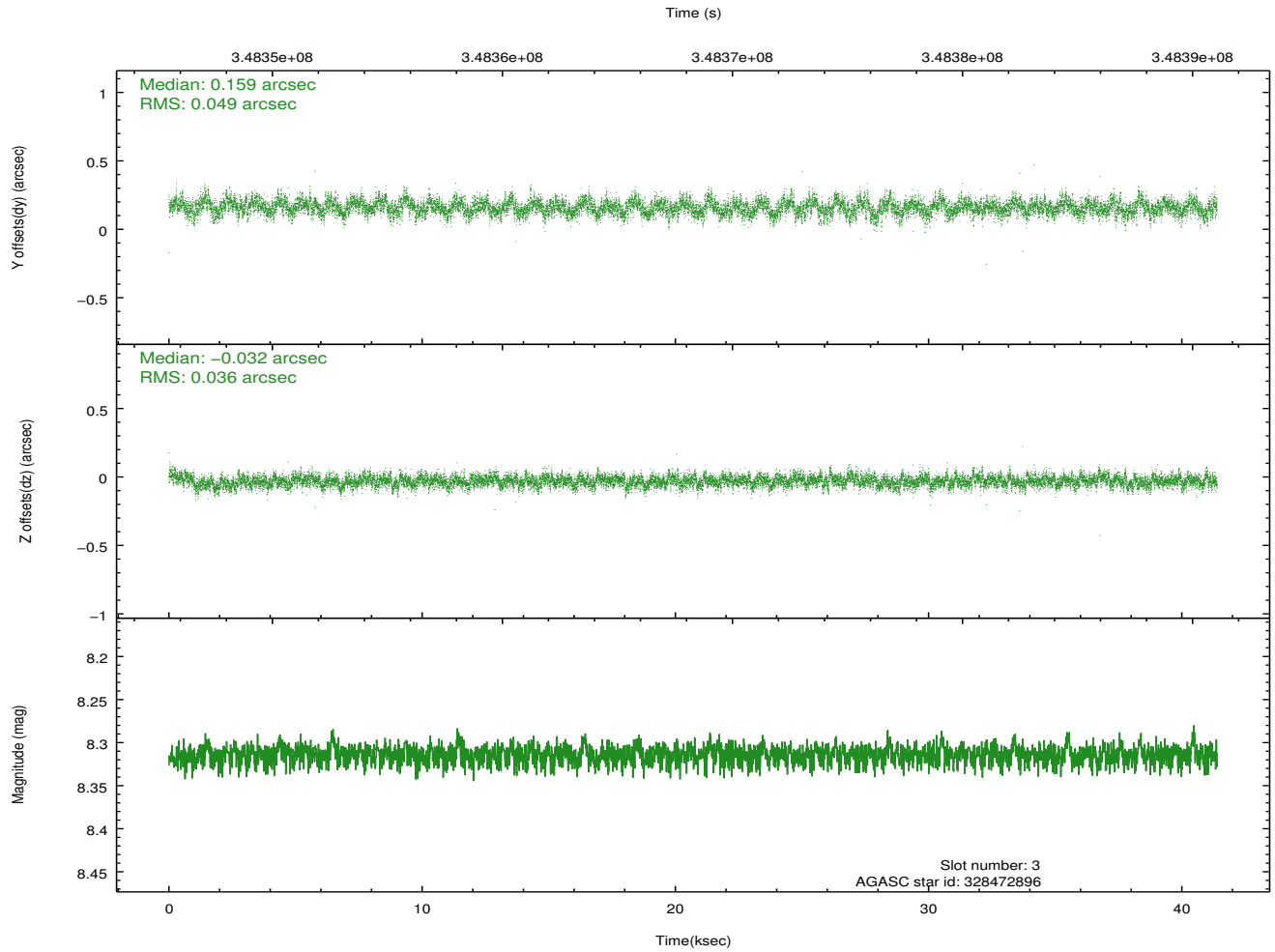
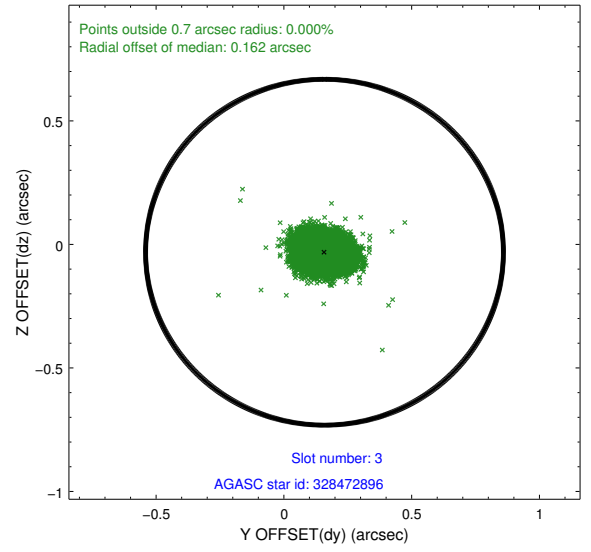
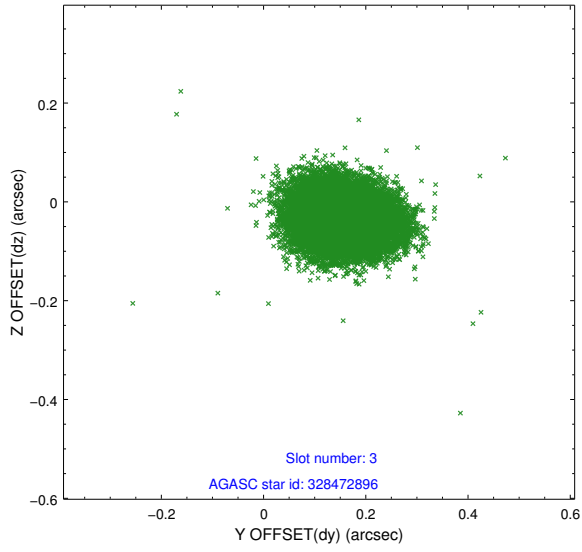


Slot Statistics

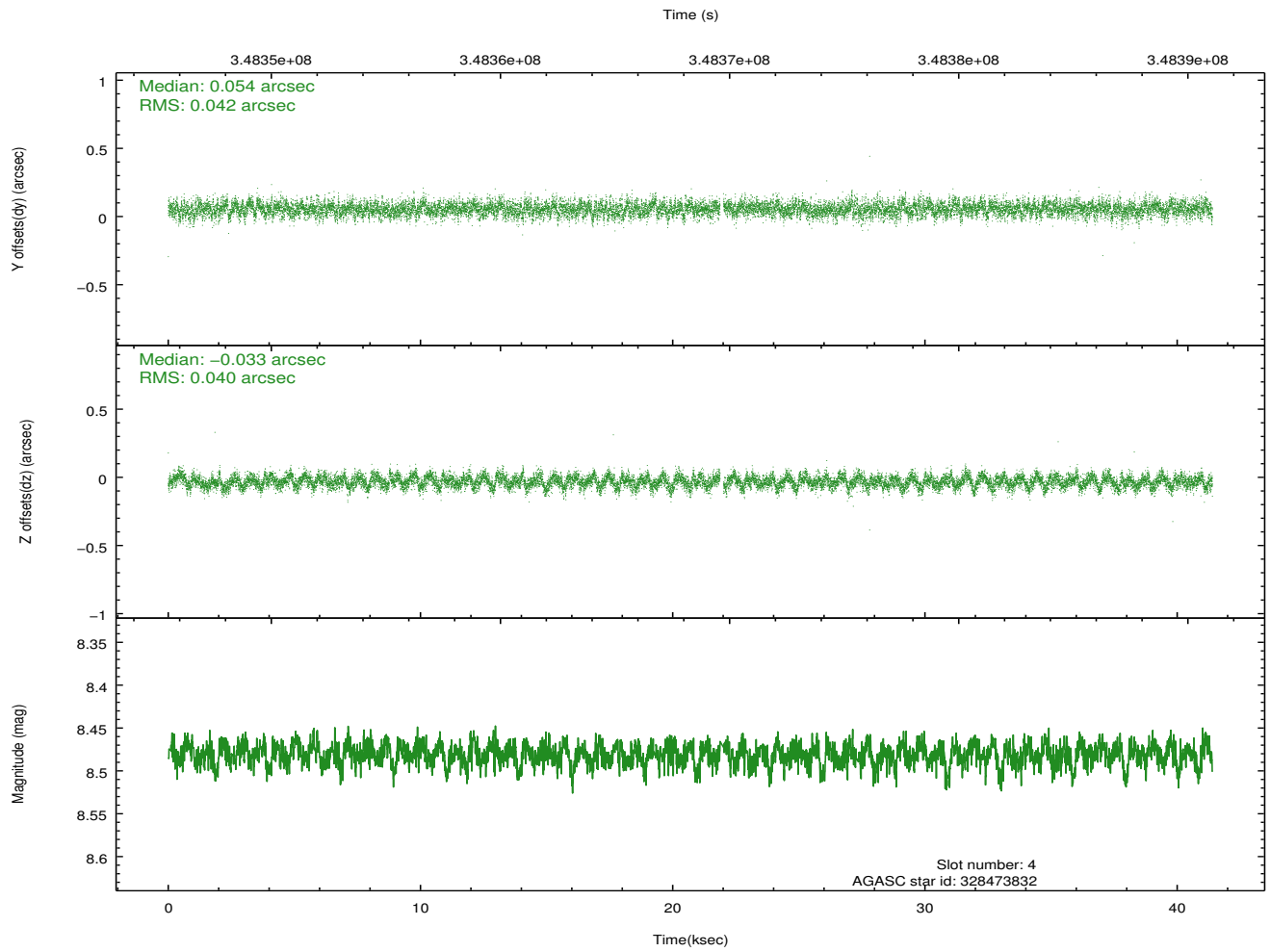
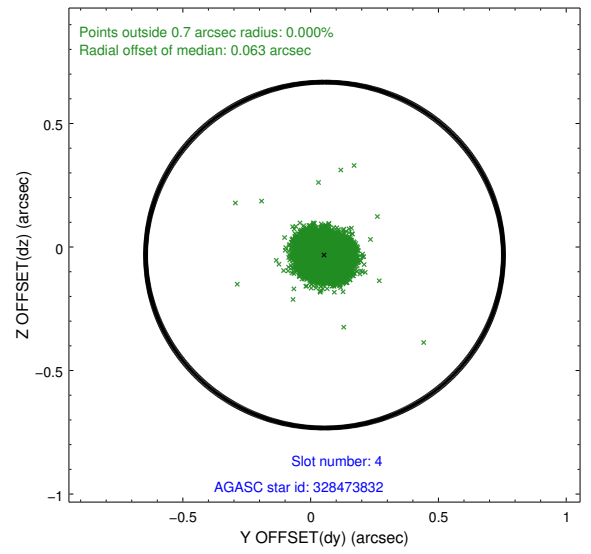
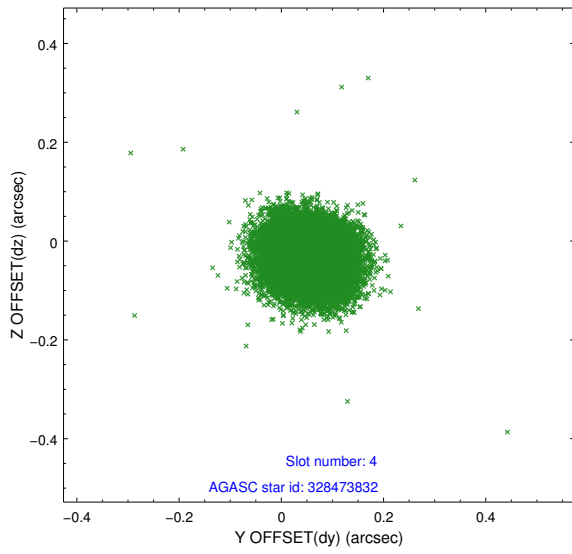
slot	status	id	mag	n_pts	med_dy	med_dz	dr1	dr2	ra	dec	mean_y	mean_z
0	FID	ACIS-I-1	7.09	10097	-0.033	0.053	0.012	0.021	0.000000	0.000000	925.09	-838.32
1	FID	ACIS-I-2	7.00	10096	-0.164	-0.078	0.010	0.017	0.000000	0.000000	-769.12	-844.90
2	FID	ACIS-I-4	7.00	10094	0.099	0.094	0.010	0.019	0.000000	0.000000	2145.11	1061.52
3	GUIDE	328472896	8.31	20184	0.159	-0.032	0.063	0.106	151.469747	34.201013	-2178.32	951.51
4	GUIDE	328473832	8.48	20119	0.054	-0.033	0.061	0.099	151.466016	34.252055	-1997.69	916.45
5	GUIDE	328476960	7.84	20189	0.058	0.013	0.074	0.115	151.402383	34.690064	-424.17	700.15
6	GUIDE	328859664	7.13	20188	-0.312	-0.016	0.065	0.104	151.454409	35.002360	624.35	266.59
7	GUIDE	328860432	9.14	20172	0.036	0.067	0.108	0.169	151.141670	35.103376	1210.89	1066.04

2.4 Star Slots

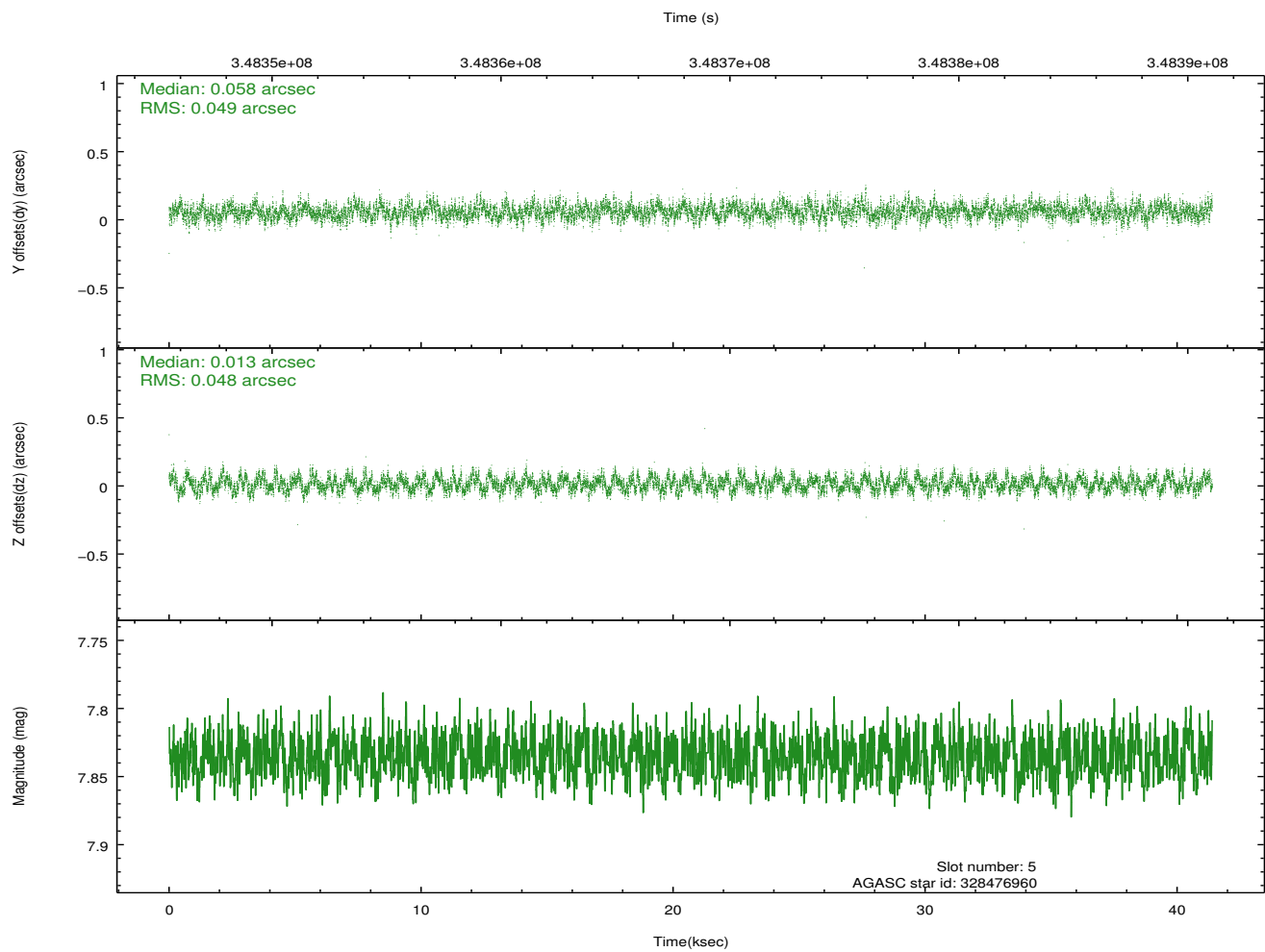
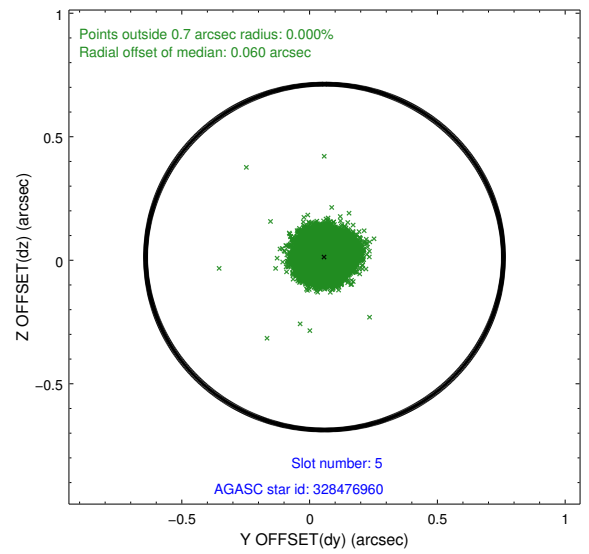
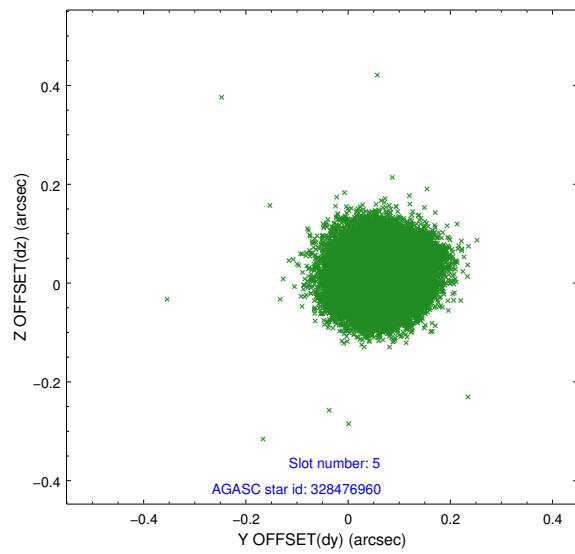
2.4.1 Slot 3



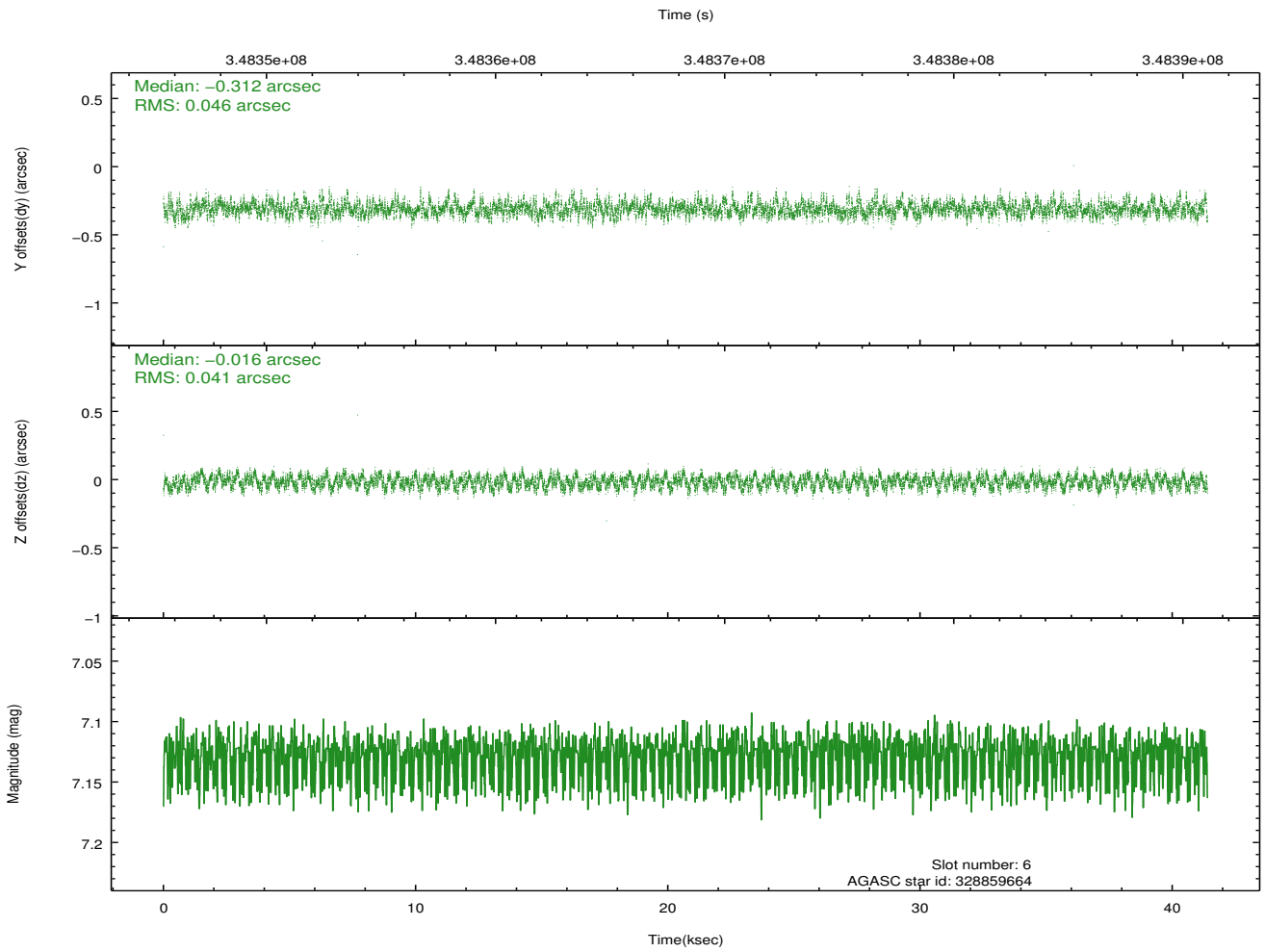
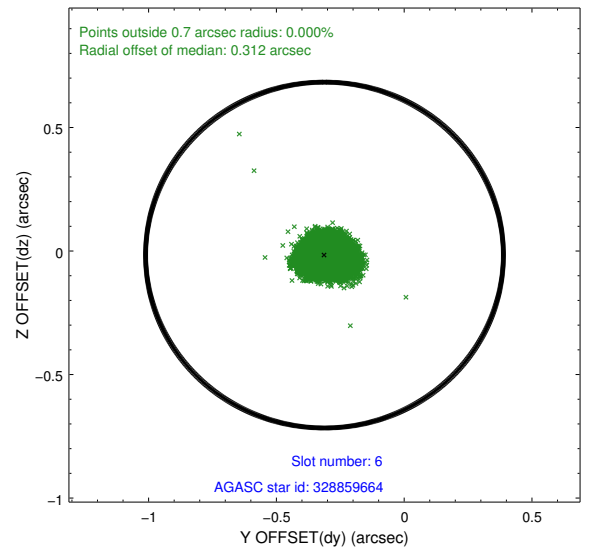
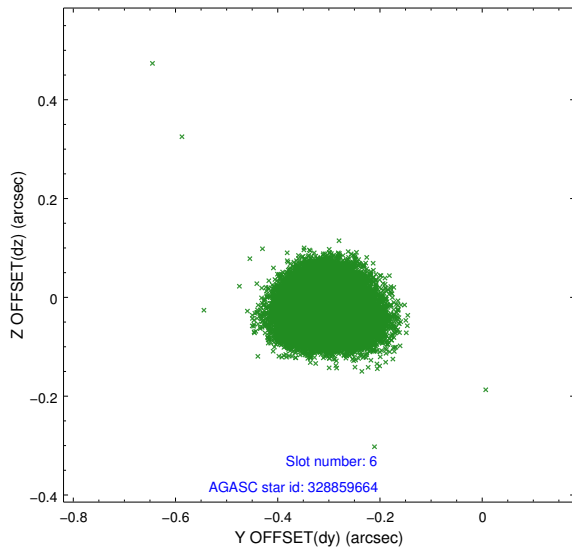
2.4.2 Slot 4



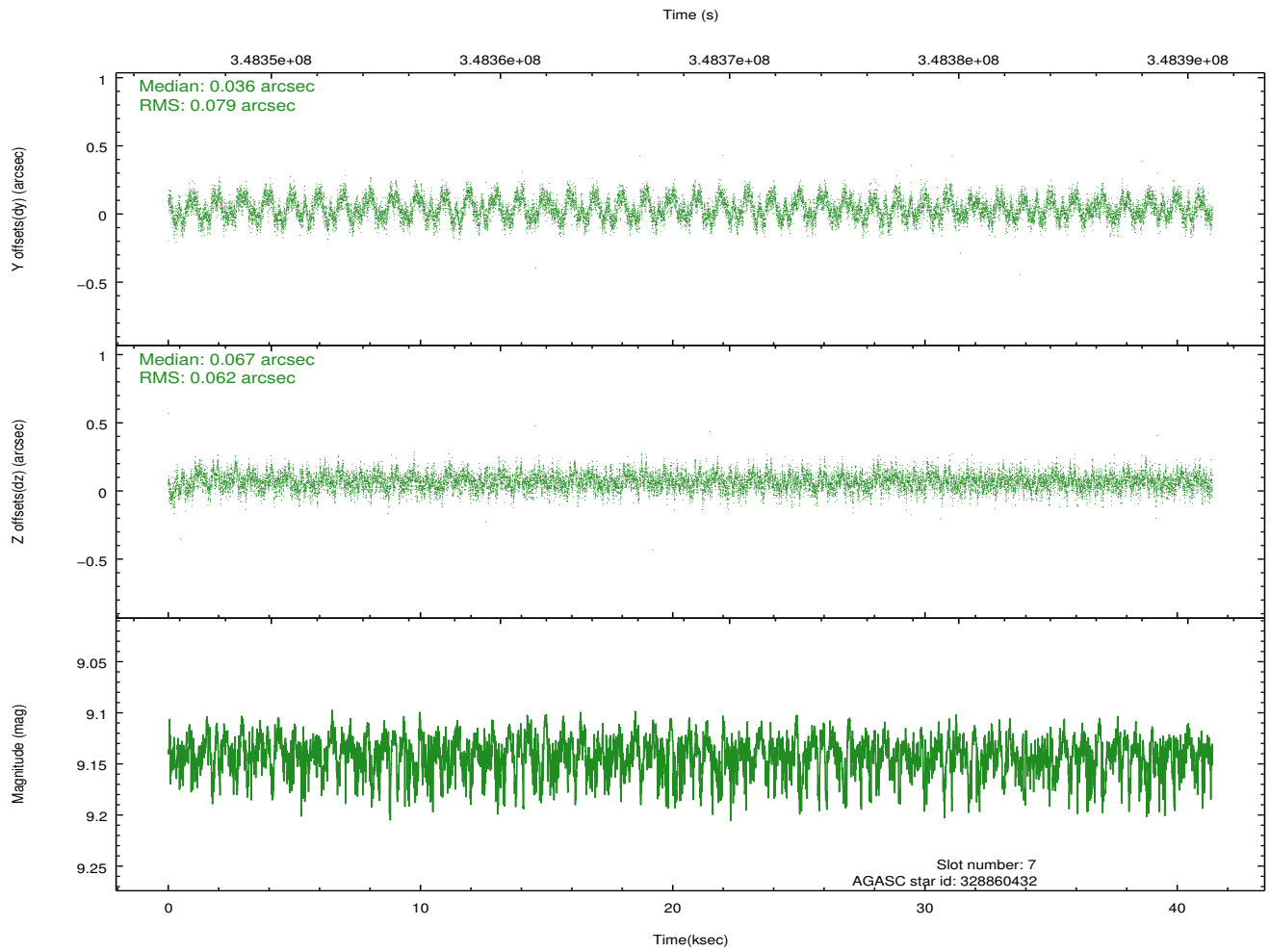
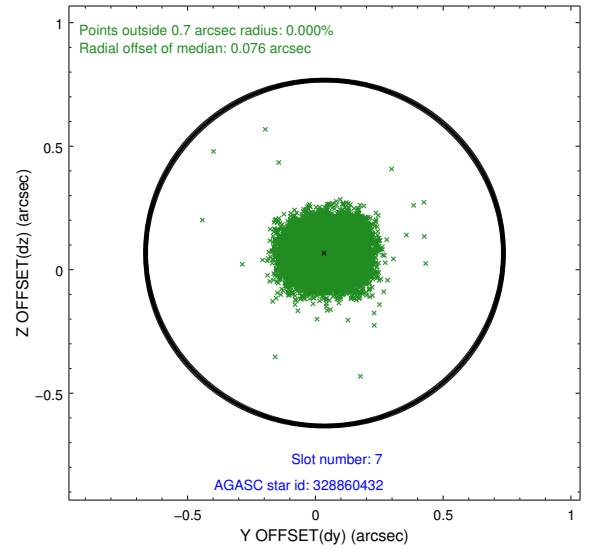
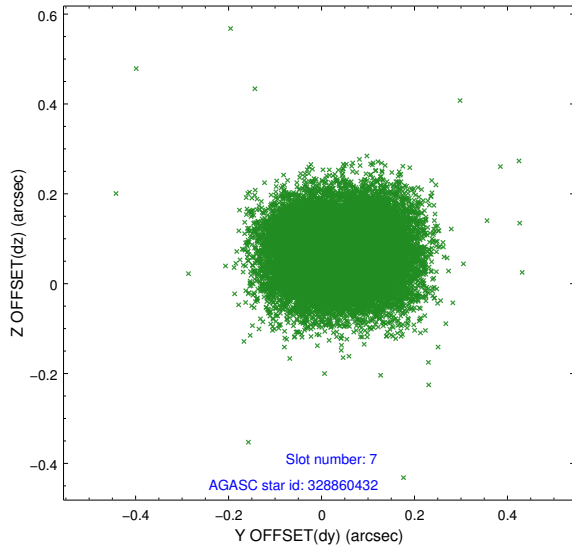
2.4.3 Slot 5



2.4.4 Slot 6

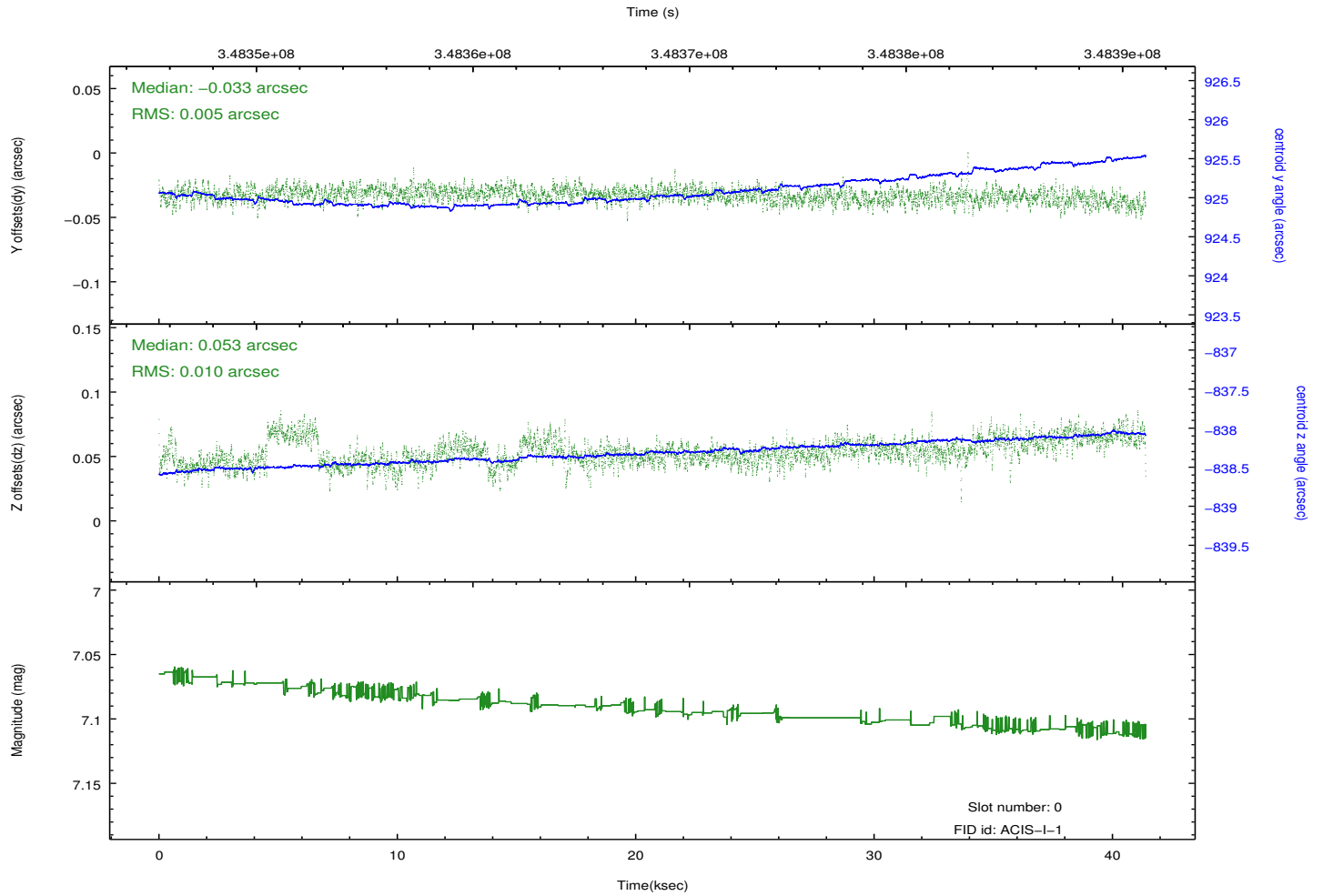
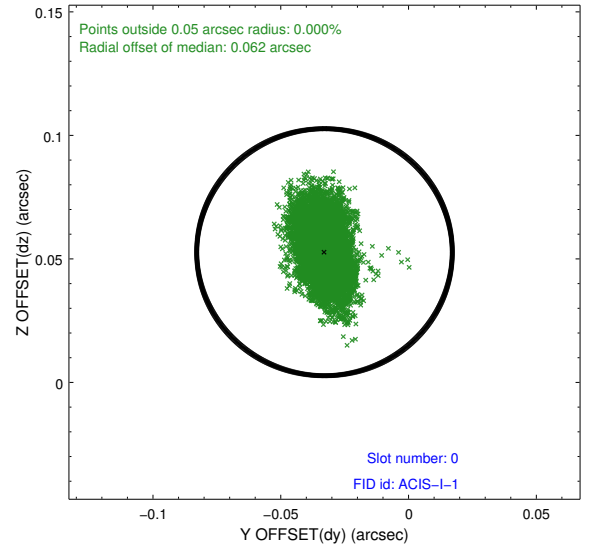
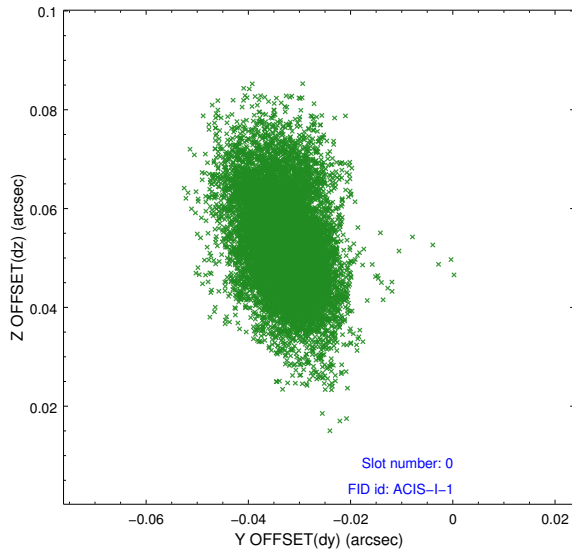


2.4.5 Slot 7

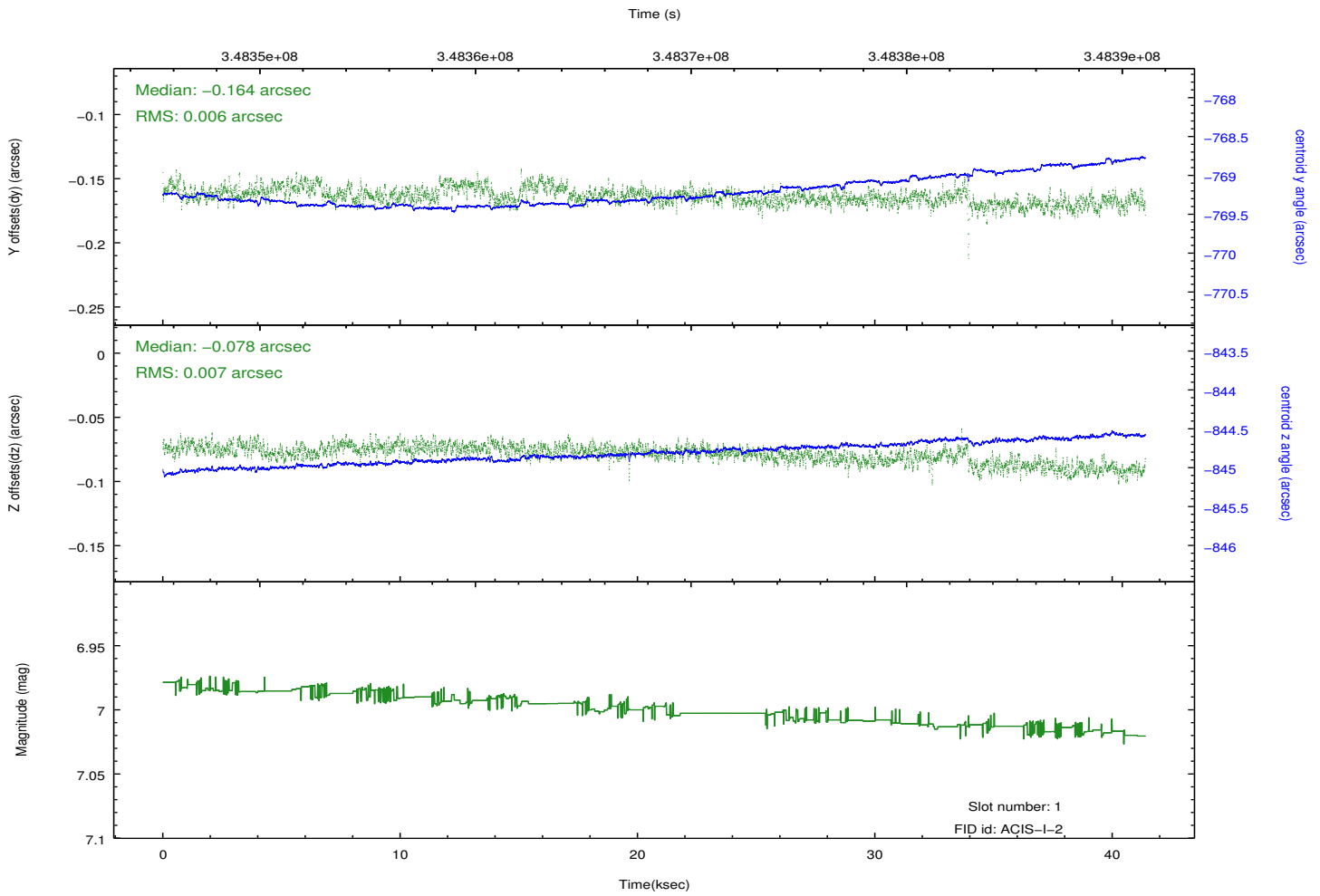
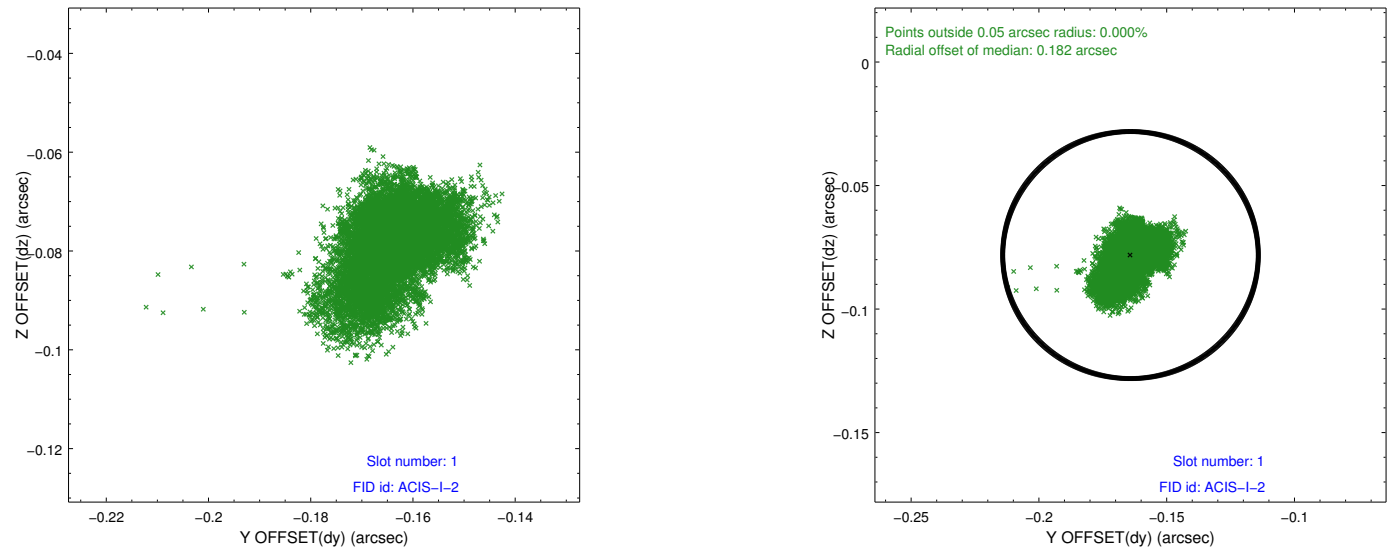


2.5 FID Slots

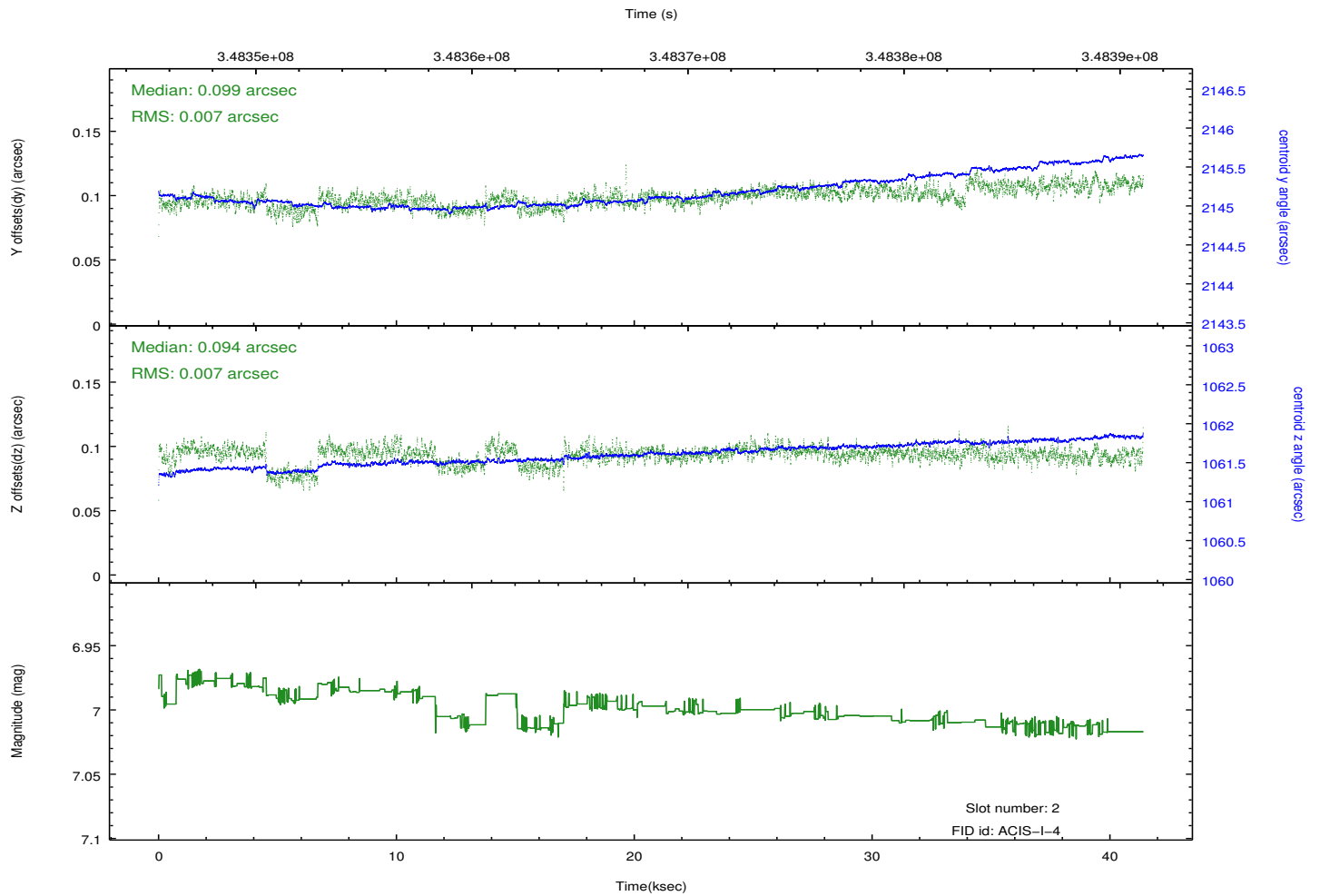
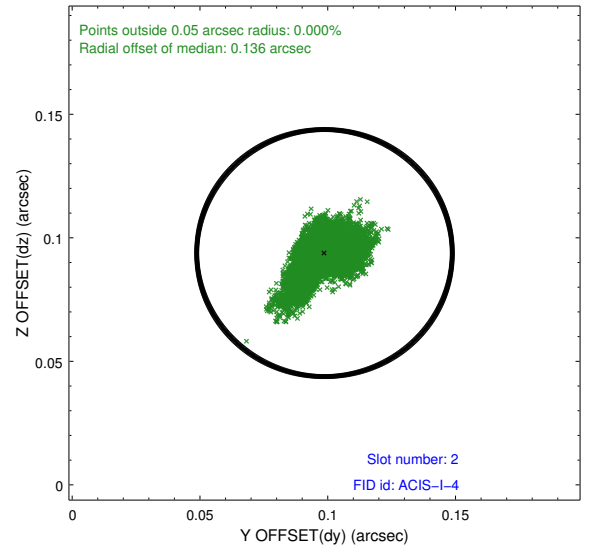
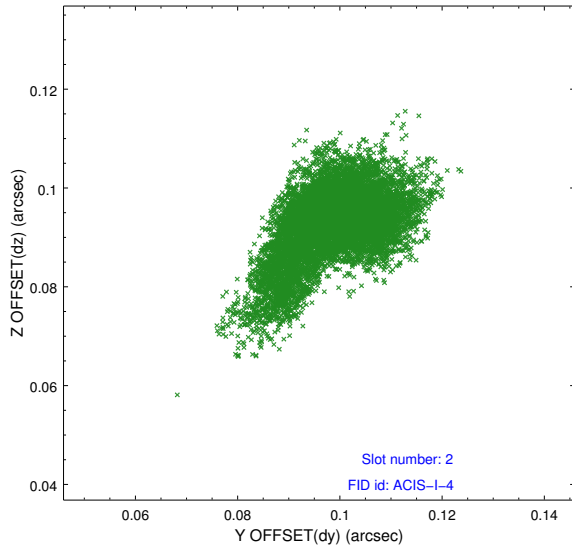
2.5.1 Slot 0



2.5.2 Slot 1



2.5.3 Slot 2



A Summary

A.1 Status

V&V Scientist	Jen Lauer
V&V Date (YYYY-MM-DD)	2012.06.04
V&V Edition	1
V&V Disposition and Status	OK
V&V Charge Time	41.0377183

A.2 Comments

Joint Proposal: HST