

V&V Reference Report

L2 ASCDS Version : 8.4.4

Observation 10309 - L2 Version 2
Chandra X-Ray Center

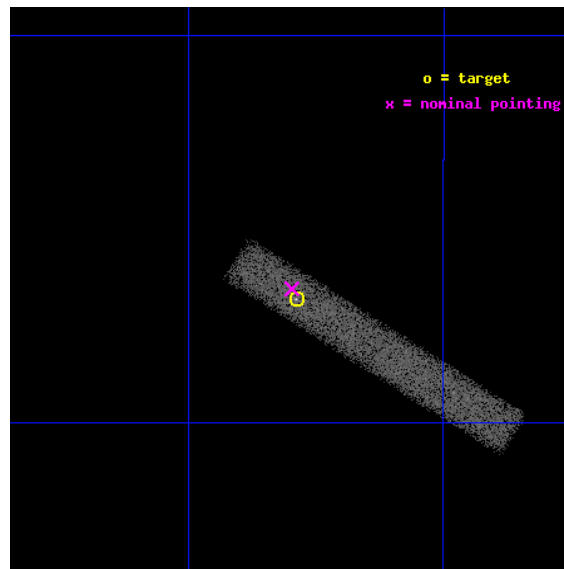
L2 Processing Date : Jun 2 2012

Contents

1	Front	2
2	OBI	3
2.1	OBI	3
2.1.1	Images	3
2.1.2	Bias	3
2.1.3	Parameters	4
2.1.4	Events	4
2.2	Compared Parameters	5
2.3	Aspect	6
2.4	Star Slots	9
2.4.1	Slot 3	9
2.4.2	Slot 4	10
2.4.3	Slot 5	11
2.4.4	Slot 6	12
2.4.5	Slot 7	13
2.5	FID Slots	14
2.5.1	Slot 0	14
2.5.2	Slot 1	15
2.5.3	Slot 2	16
A	Summary	17
A.1	Status	17
A.2	Comments	17

1 Front

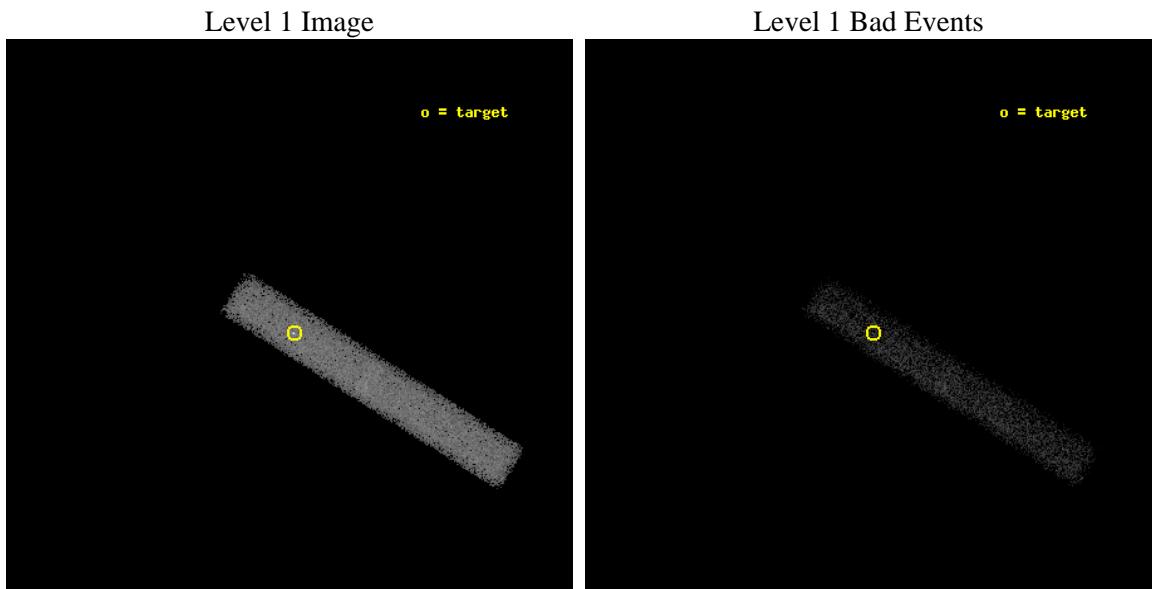
seq_num	701852	Sequence number
obs_id	10309	Observation id
title	Jets at Intermediate Redshifts: Shedding Light on Emission Mechanisms and Physics	Proposal title
observer	Dr. Rita Sambruna	Principal investigator
object	1311-270	Source name
dtcycle	0	
cycle	P	events from which exps? Prim/Second/Both
ra_targ	198.447083	Observer's specified target RA [deg]
dec_targ	-27.280278	Observer's specified target Dec [deg]
ra_nom	198.44946583071	Nominal RA [deg]
dec_nom	-27.275899429016	Nominal Dec [deg]
roll_nom	32.157721874083	Nominal Roll [deg]
revision	2	Processing version of data
ontime	20179.598797202	Sum of GTIs [s]
livetime	18301.830942502	Livetime [s]
ontime7	20179.598797202	Sum of GTIs [s]
l2events	18570	Number of level 2 events



2 OBI

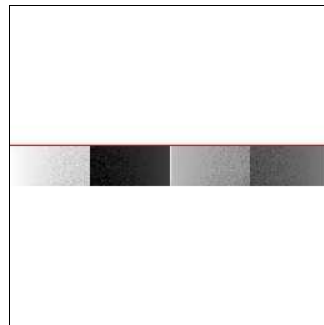
2.1 OBI

2.1.1 Images



2.1.2 Bias

Chip 7



2.1.3 Parameters

obi_num	0	Obi number	sched_exp_time	20000.000000	[s] Scheduled observation exposure time
ascdsver	8.4.4	Processing system revision	ontime	20179.598797202	Sum of GTIs [s]
caldbver	4.4.9	 	ontime7	20179.598797202	Sum of GTIs [s]
date	2012-06-02T15:08:37	Date and time of file creation	l1events	42418	Number of level 1 events
revision	2	Processing version of data			

2.1.4 Events

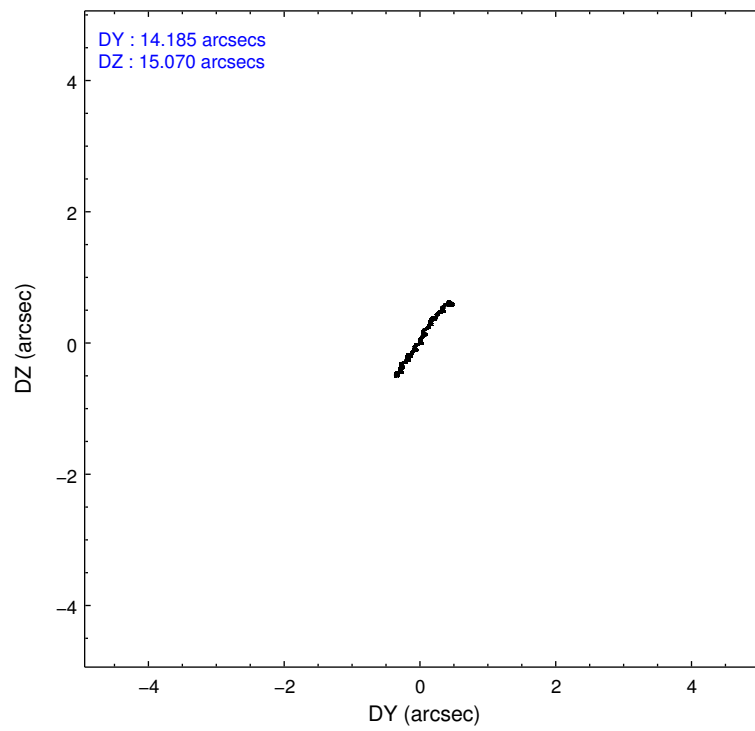
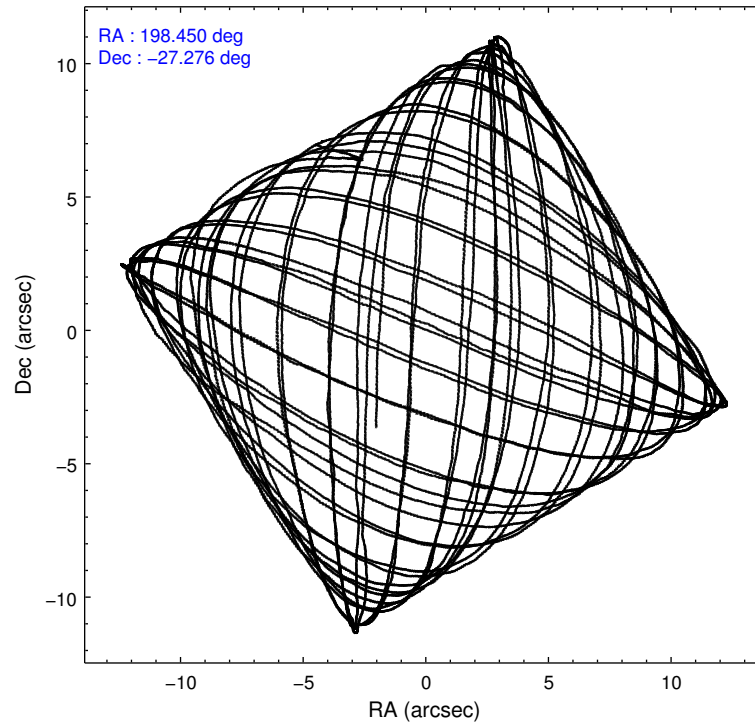
	ccd 7
level 1 events	42418
rejected events	23093
rejected %	54%

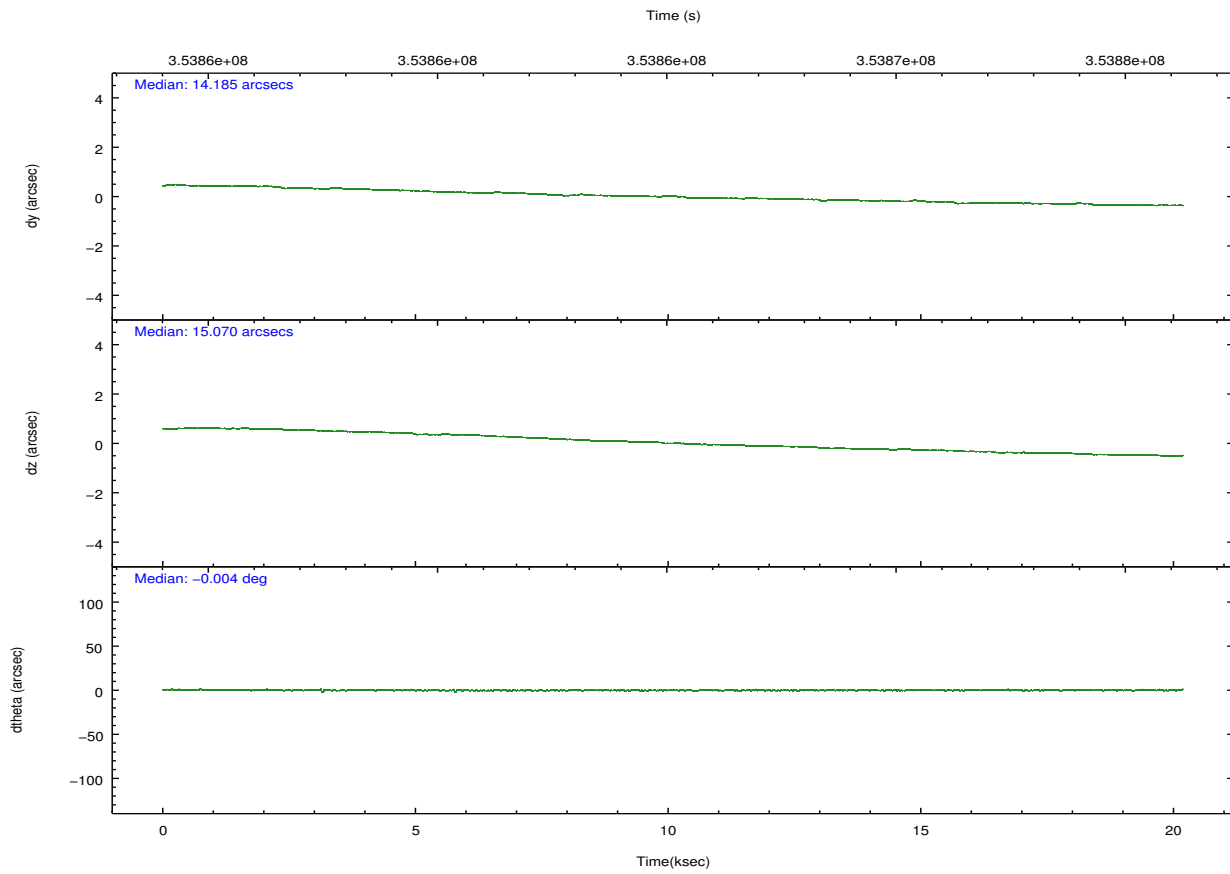
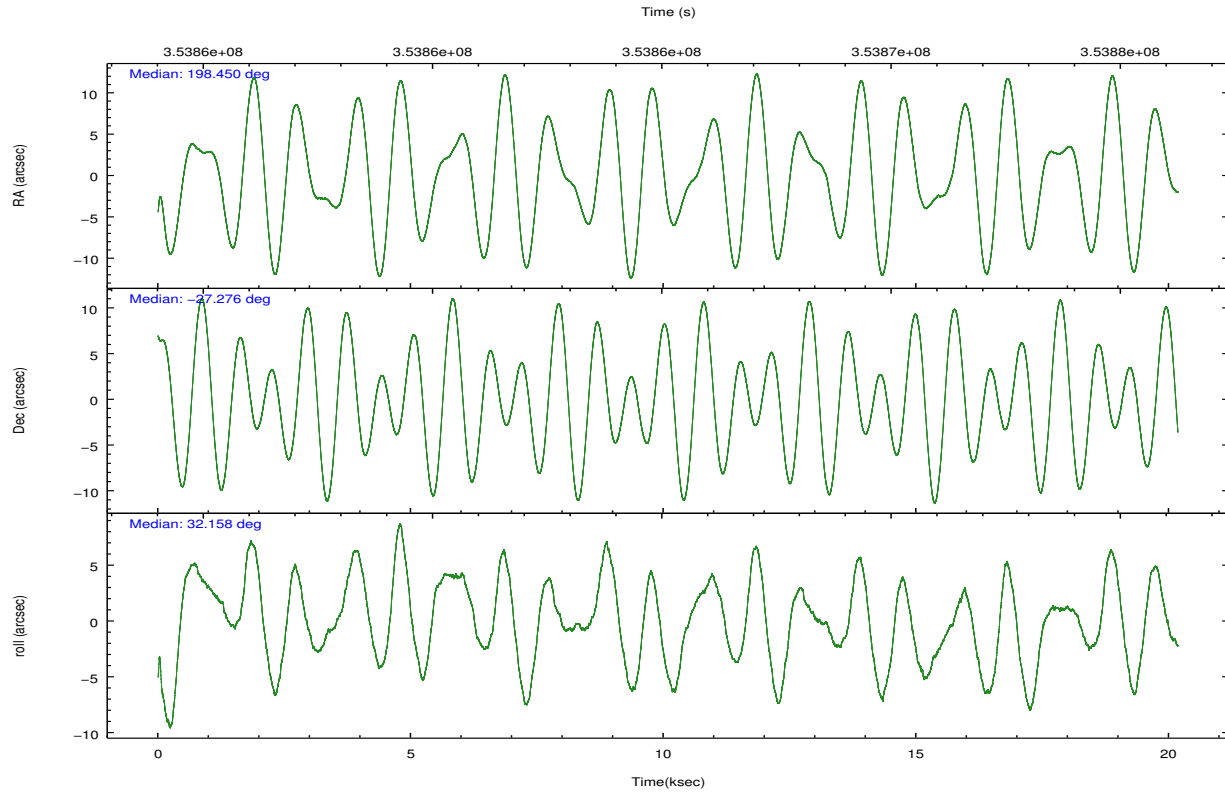
	ccd 7
grade 0 events	2234
	5%
grade 1 events	58
	0%
grade 2 events	4114
	9%
grade 3 events	2444
	5%
grade 4 events	2451
	5%
grade 5 events	3918
	9%
grade 6 events	9089
	21%
grade 7 events	18110
	42%

2.2 Compared Parameters

Parameter	Planned	Actual	Parameter	Planned	Actual
Instrument	ACIS	ACIS	Obspar format version number	7	7
Detector	ACIS-7	ACIS-7	Obspar file type	PREDICTED	ACTUAL
Grating	NONE	NONE	Obspar update status	NONE	UPDATED
Data mode	FAINT	FAINT	Number of optional ACIS chips dropped	0	0
Observation mode	POINTING	POINTING	On-chip summing requested	N	N
[deg] Pointing RA	198.435486	198.4494658307133	Subarray requested	CUSTOM	1/8
[deg] Pointing Dec	-27.300275	-27.27589942901574	Subarray start row	449	449
[deg] Pointing Roll	31.994677	32.15772187408349	Subarray row count	128	128
[mm] SIM focus pos	-0.684267	-0.6828225247311905	Alternating exposures requested	N	N
[mm] SIM defocus	0	0.001444936568705701	[s] Primary exposure time	0.000000	0.4
[mm] SIM translation stage pos	-190.132523	-190.1425803651734			
[mm] SIM translation stage offset	0	0.01005778216563158			
[s] Observation start time (MET)	353855228.184000	353853925.82973			
Observation start date	2009-03-19T13:06:02	2009-03-19T12:45:25			
[s] Observation end time (MET)	353875228.184000	353875615.85581			
Observation end date	2009-03-19T18:39:22	2009-03-19T18:46:55			
Read mode	TIMED	TIMED			

2.3 Aspect



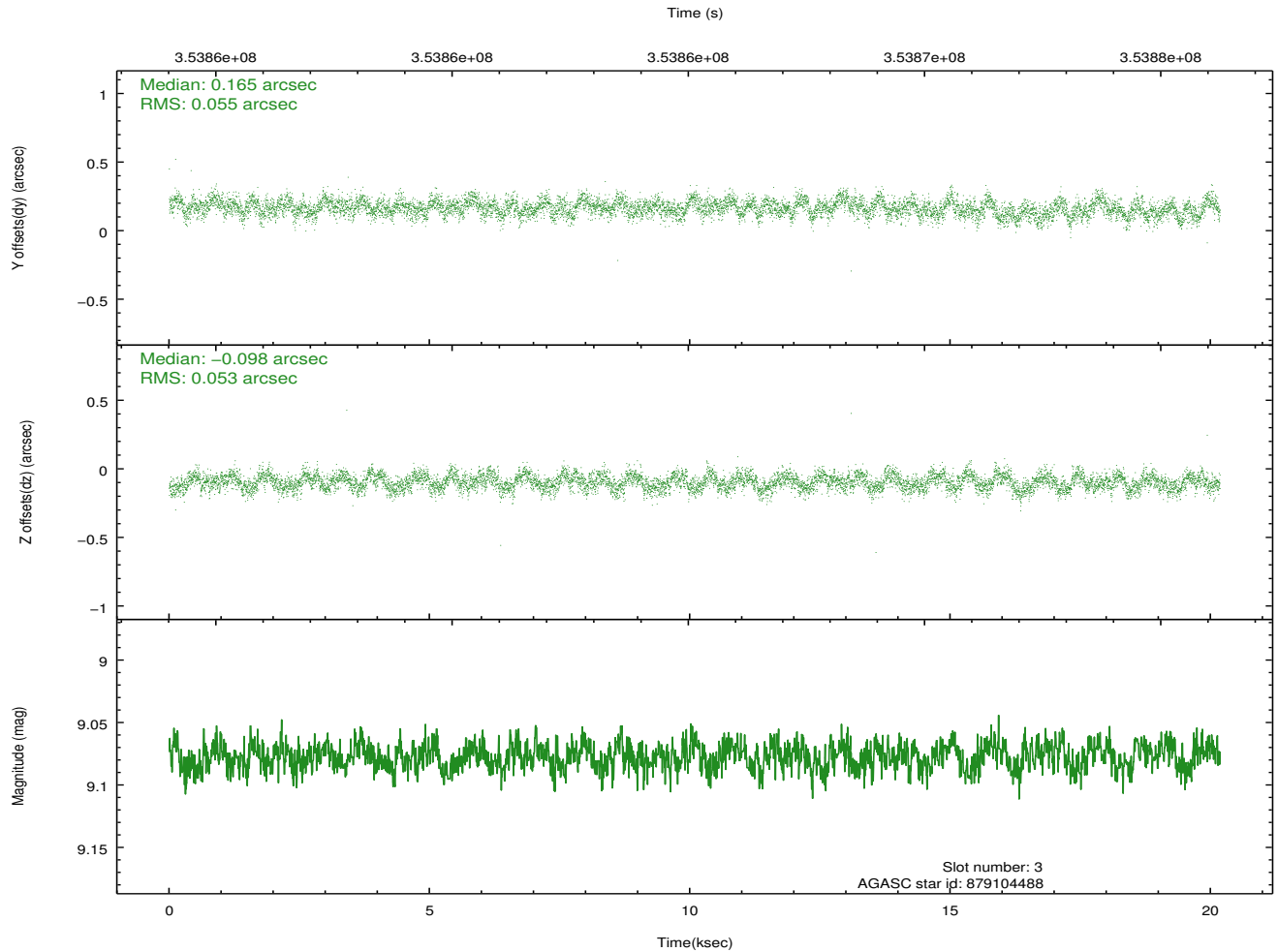
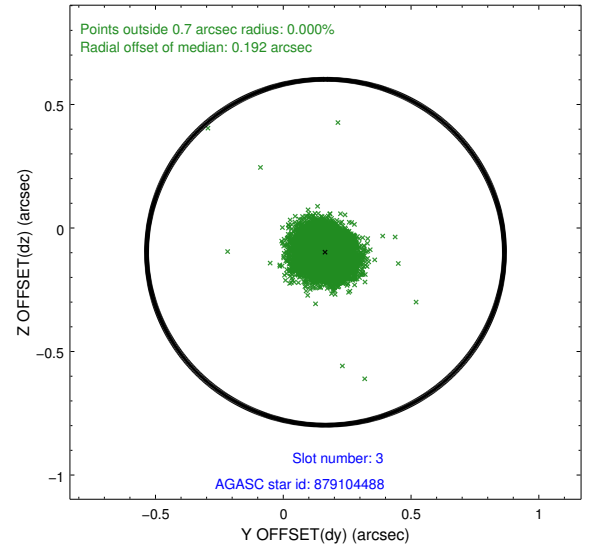
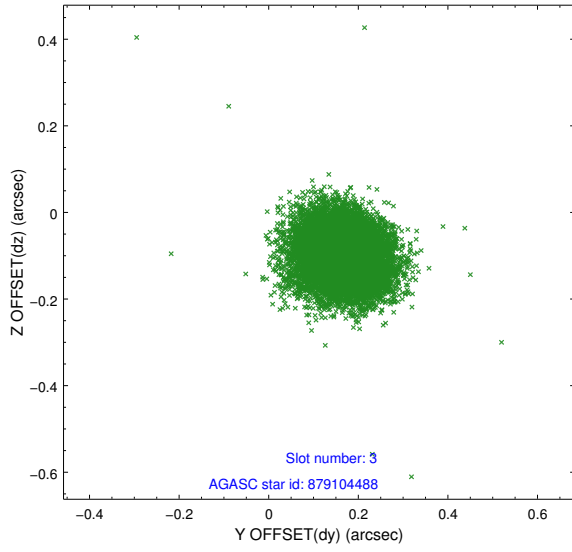


Slot Statistics

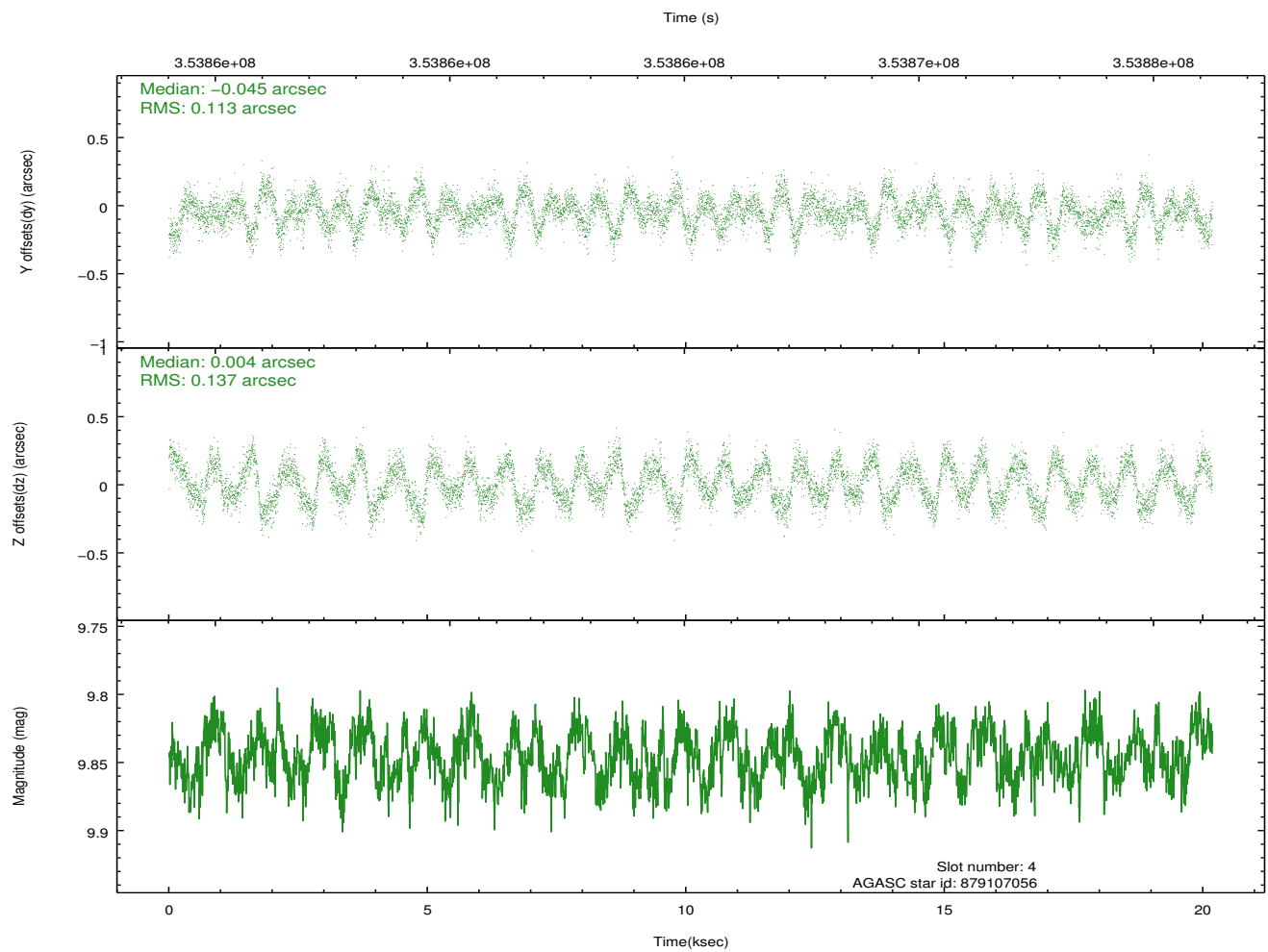
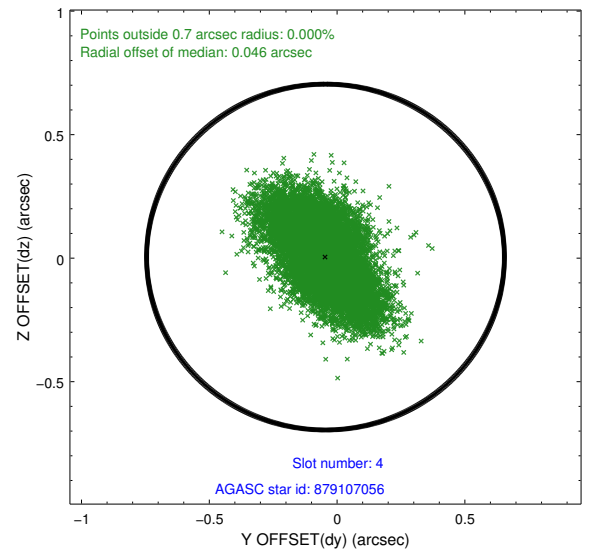
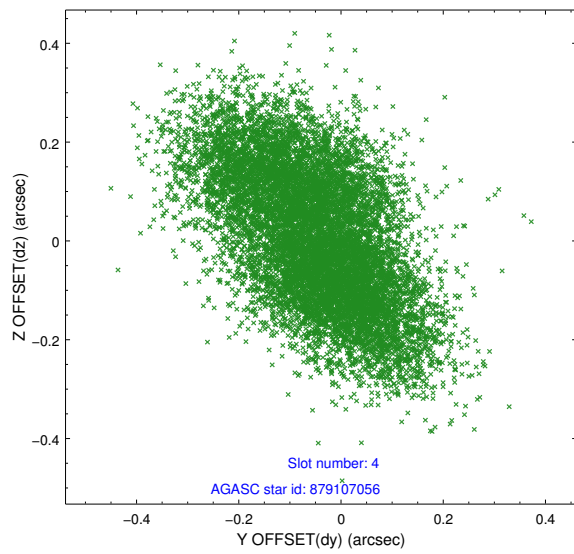
slot	status	id	mag	n_pts	med_dy	med_dz	dr1	dr2	ra	dec	mean_y	mean_z
0	FID	ACIS-S-2	6.91	4922	-0.075	-0.016	0.014	0.026	0.000000	0.000000	-767.21	-1736.48
1	FID	ACIS-S-4	6.99	4922	0.194	0.042	0.008	0.015	0.000000	0.000000	2146.24	171.90
2	FID	ACIS-S-5	7.02	4922	-0.147	-0.016	0.013	0.030	0.000000	0.000000	-1819.90	165.69
3	GUIDE	879104488	9.08	9837	0.165	-0.098	0.081	0.127	197.843466	-27.465123	-1920.49	494.93
4	GUIDE	879107056	9.85	9826	-0.045	0.004	0.189	0.307	197.675427	-27.350891	-2161.91	1127.14
5	GUIDE	879108248	9.30	9826	0.243	-0.123	0.123	0.187	198.124330	-27.306389	-856.49	507.81
6	GUIDE	879239896	9.25	9776	-0.266	0.469	0.185	0.283	198.875360	-27.446008	912.12	-1190.97
7	GUIDE	879108752	8.68	9838	-0.068	-0.262	0.081	0.131	198.438590	-26.515997	1504.49	2388.21

2.4 Star Slots

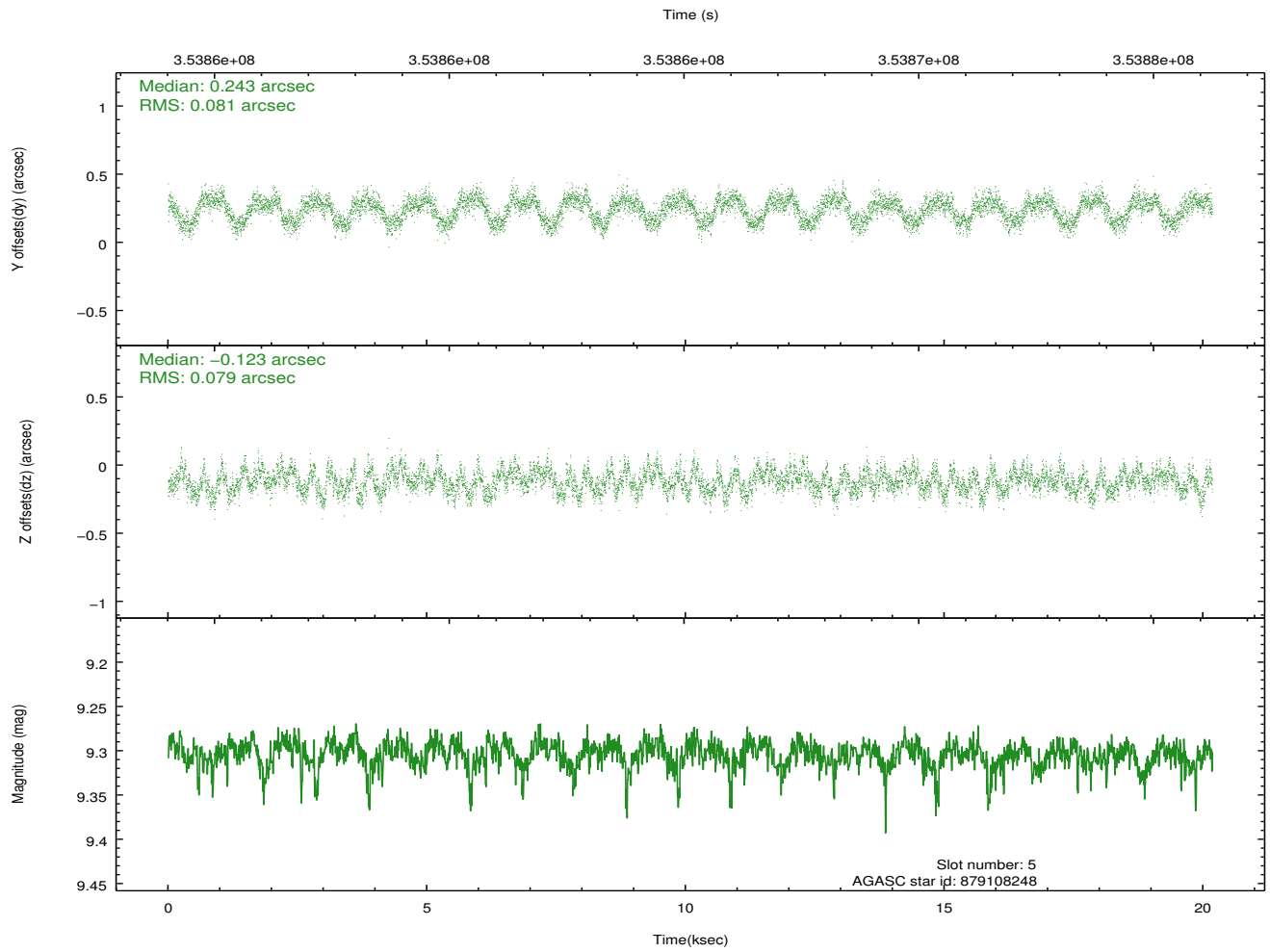
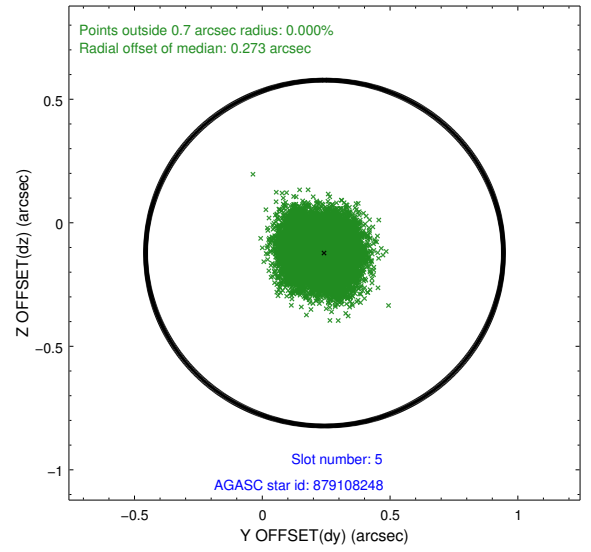
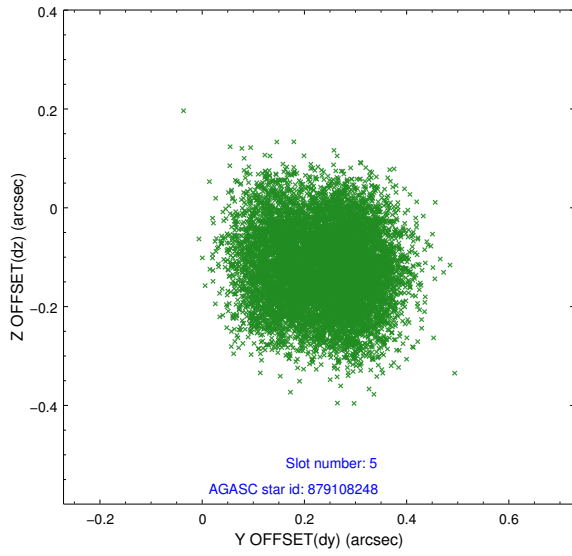
2.4.1 Slot 3



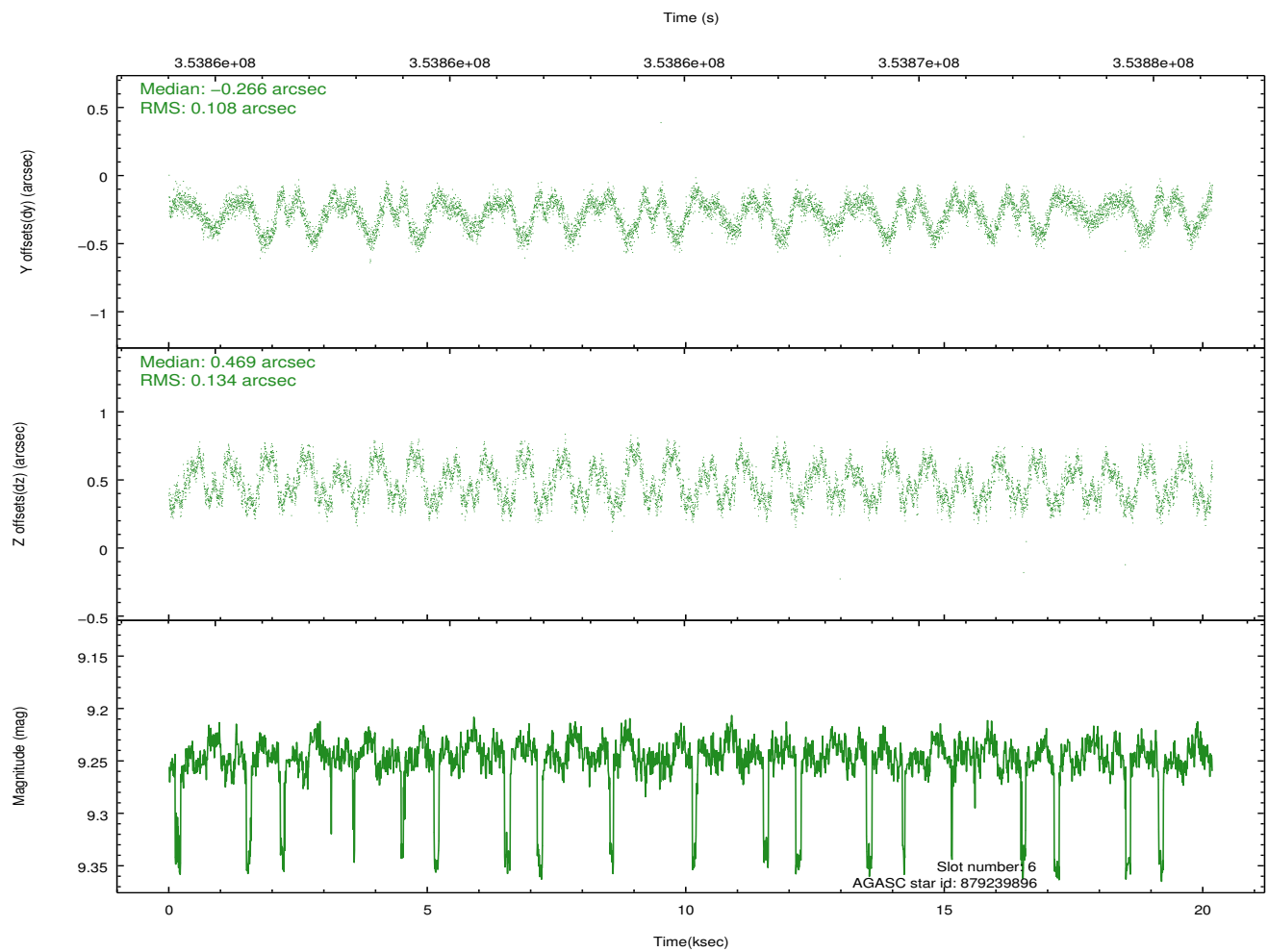
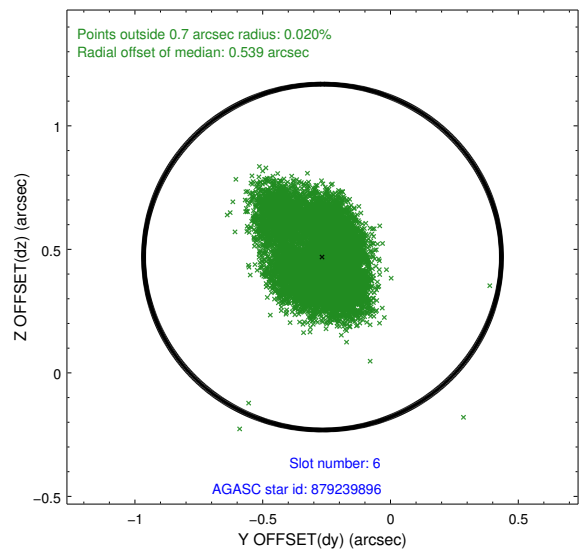
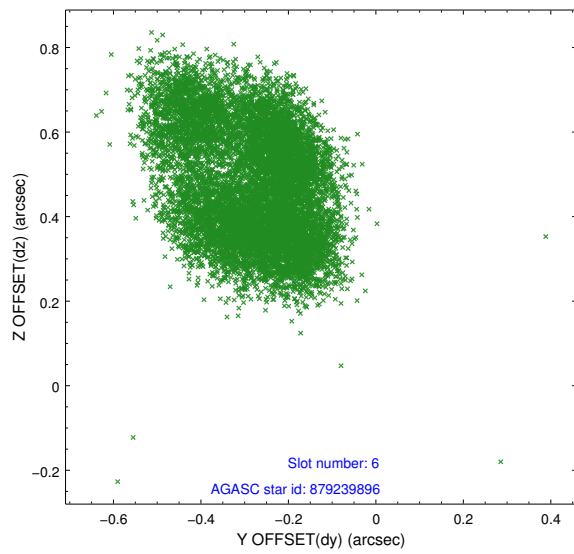
2.4.2 Slot 4



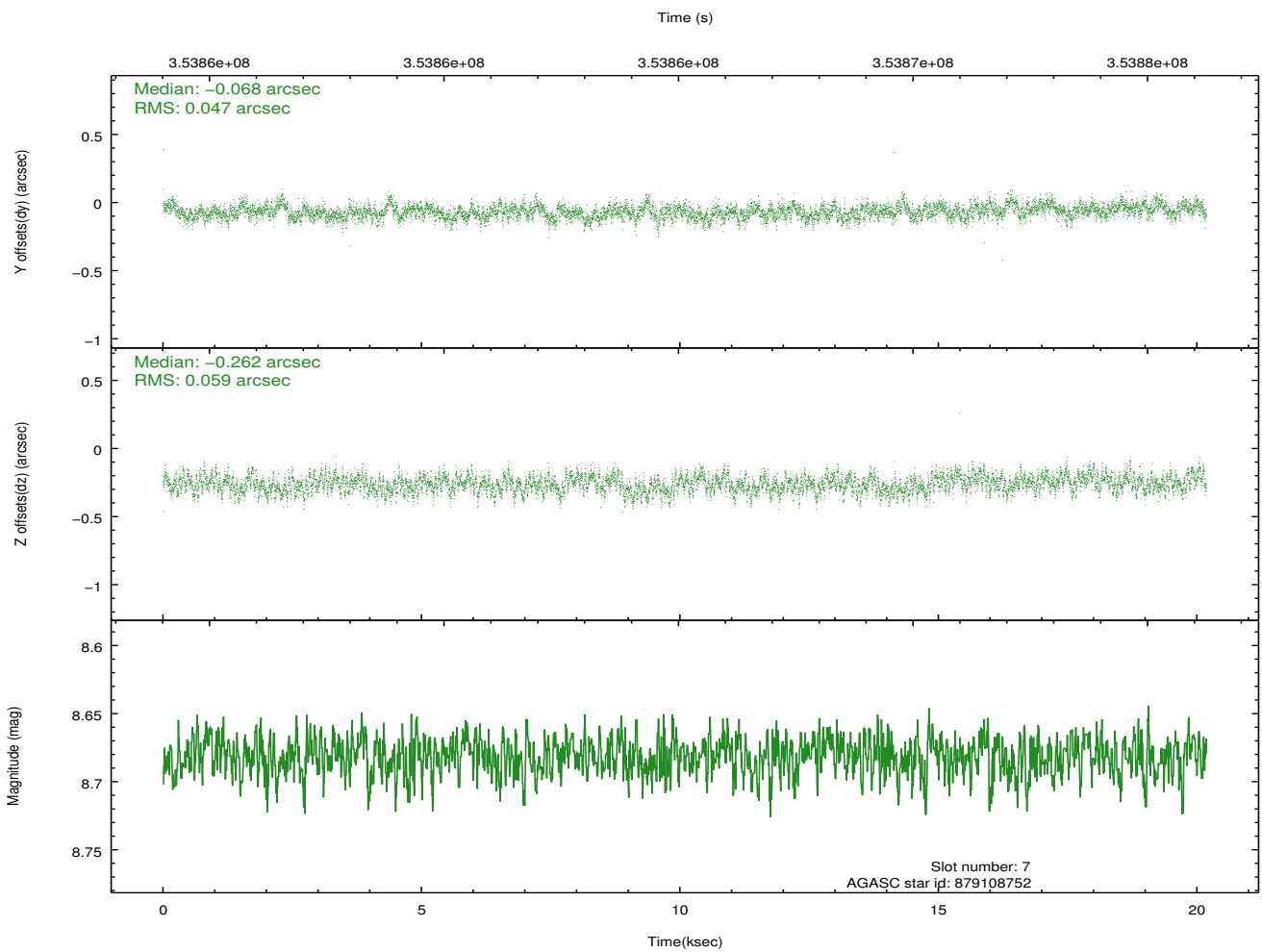
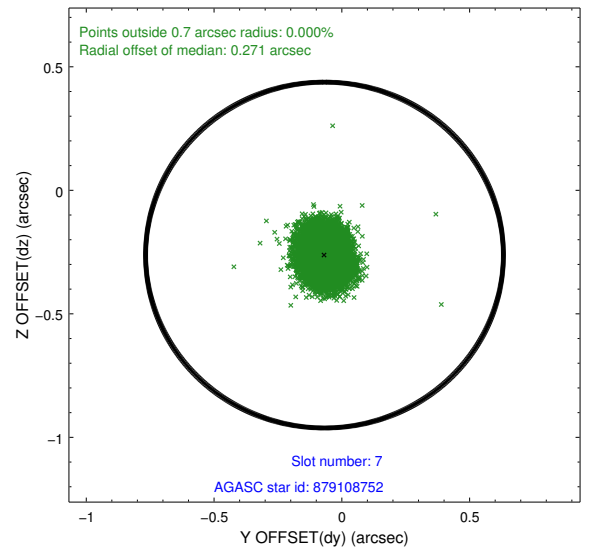
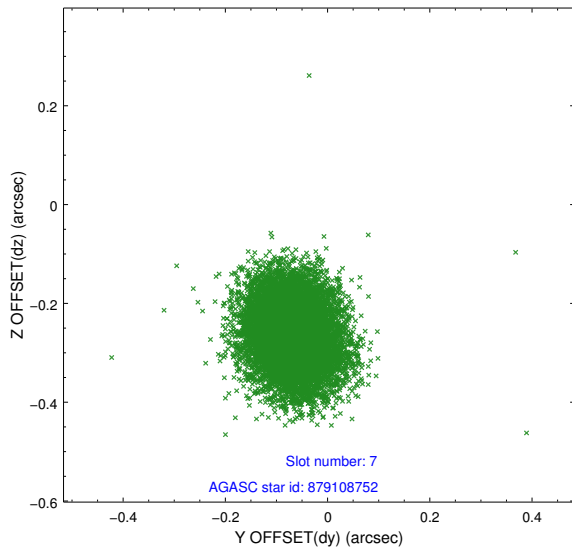
2.4.3 Slot 5



2.4.4 Slot 6

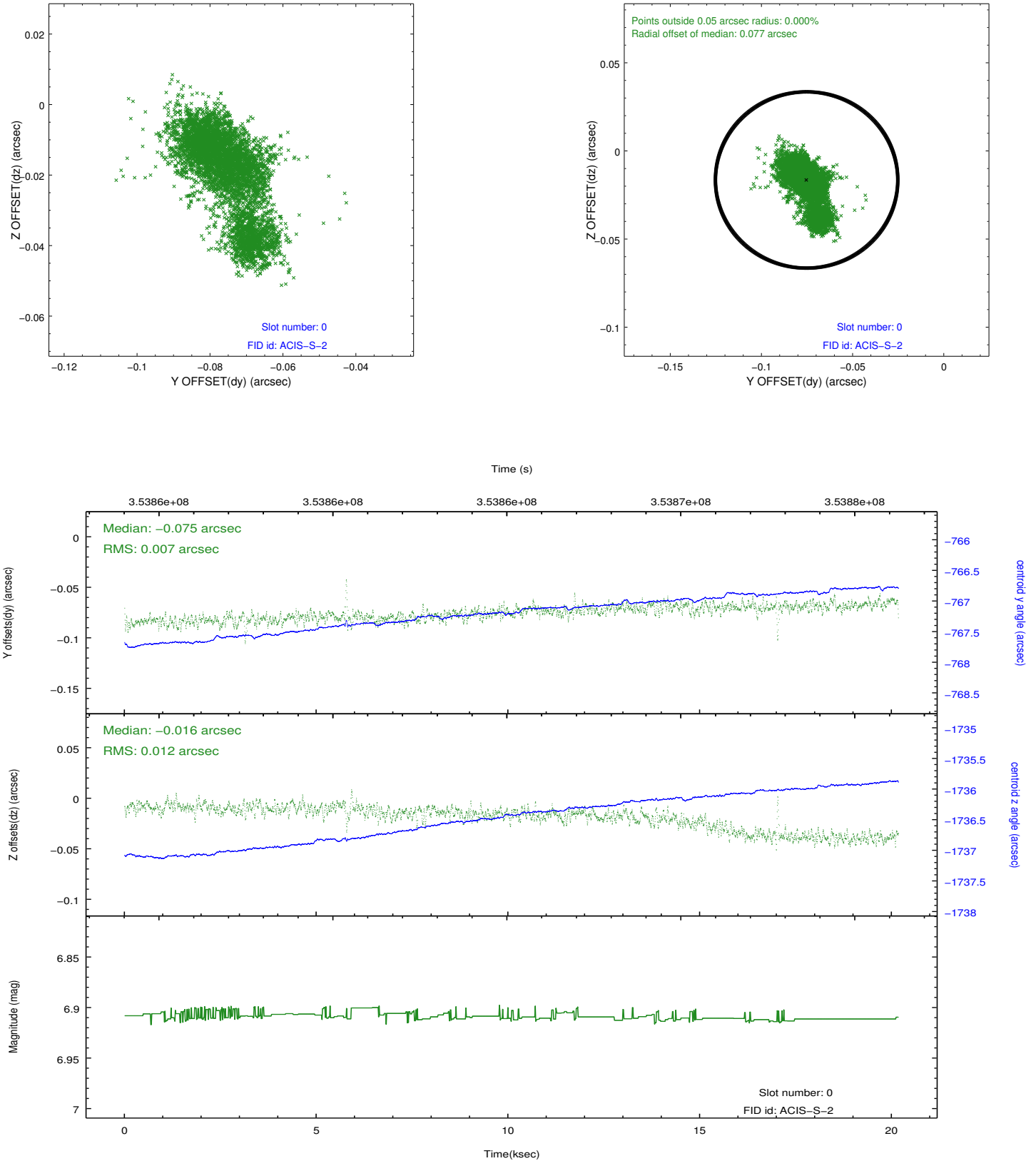


2.4.5 Slot 7

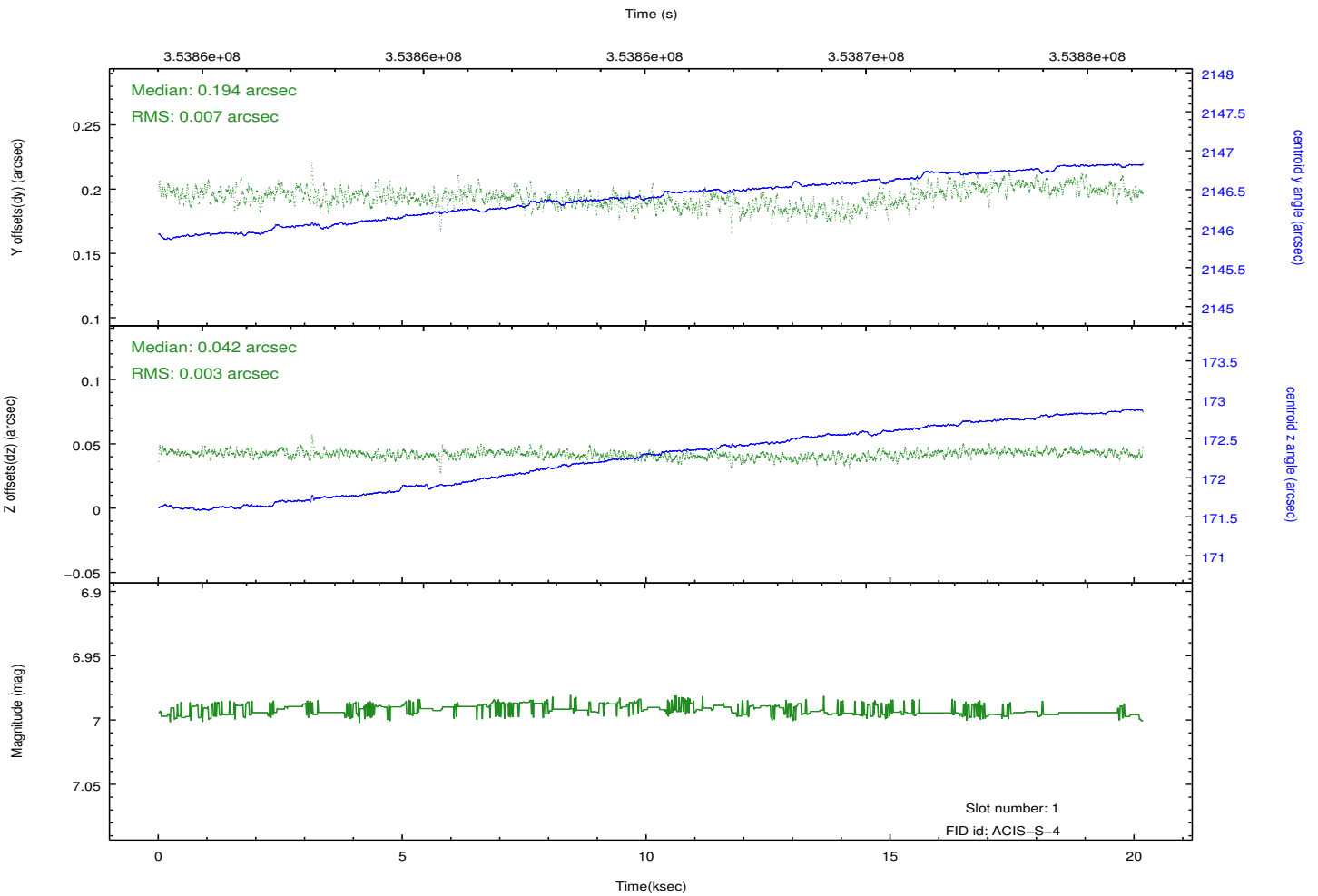
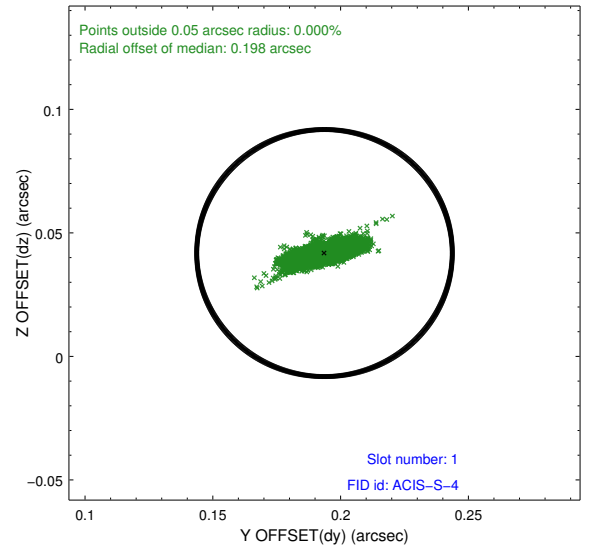
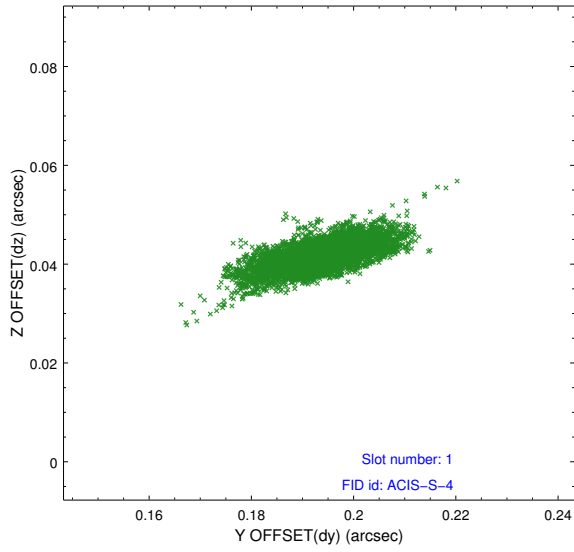


2.5 FID Slots

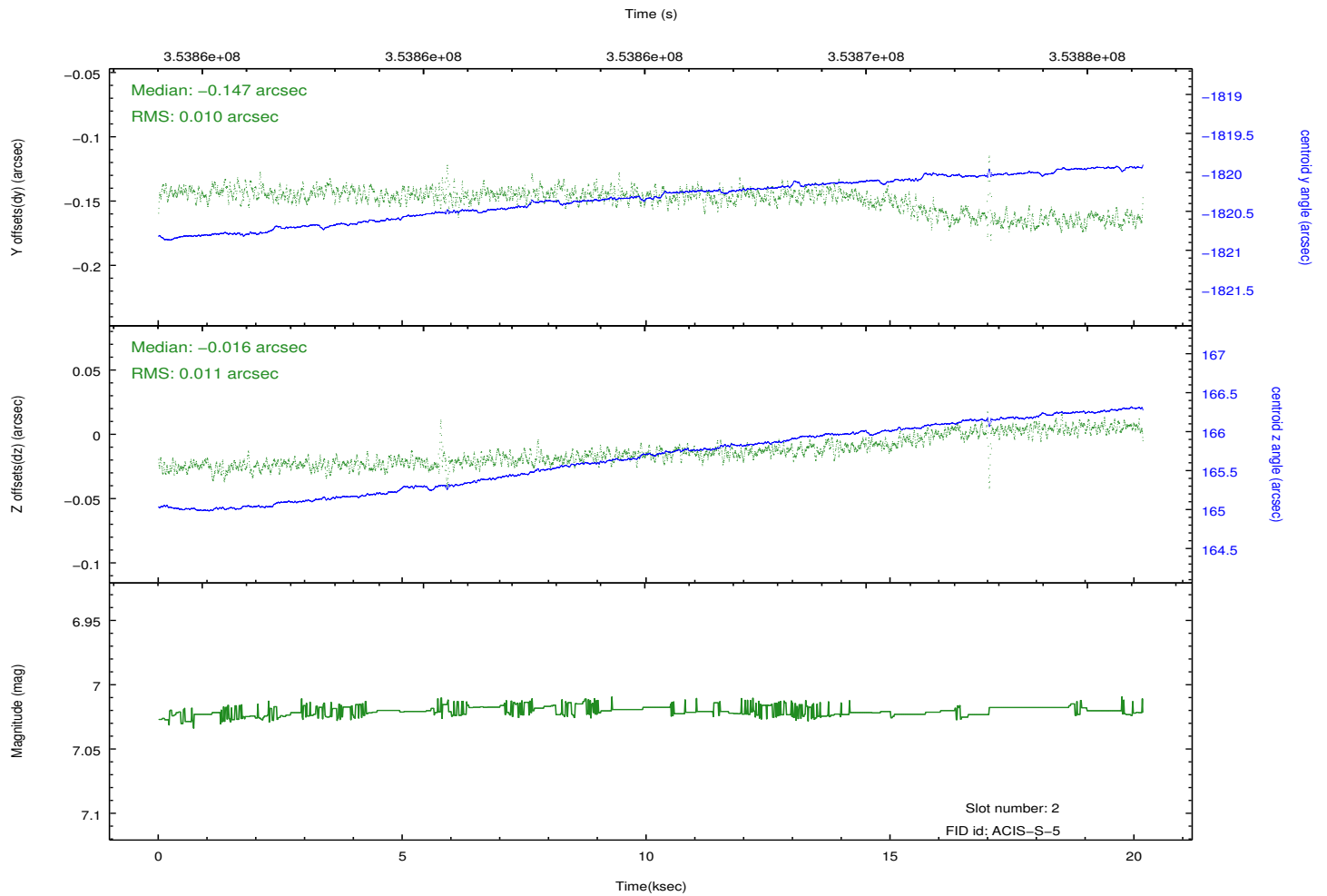
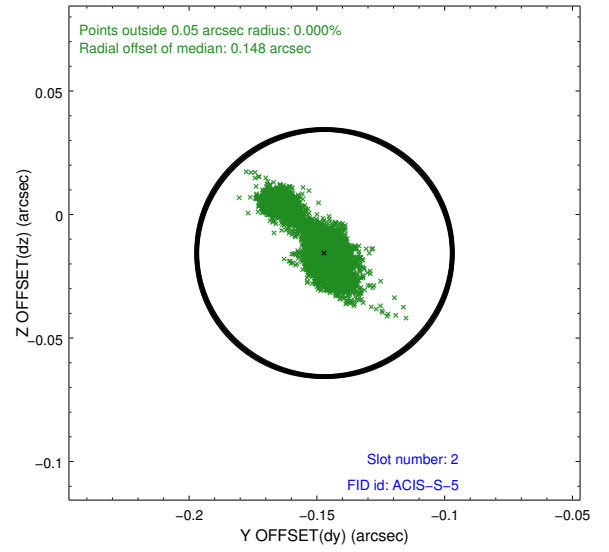
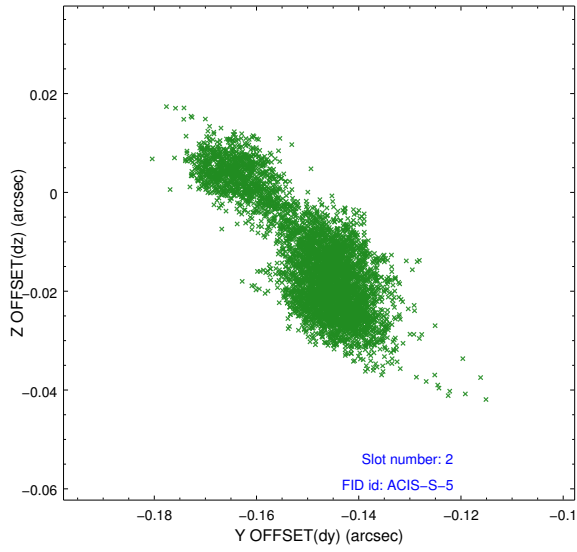
2.5.1 Slot 0



2.5.2 Slot 1



2.5.3 Slot 2



A Summary

A.1 Status

V&V Scientist	Joy Nichols
V&V Date (YYYY-MM-DD)	2012.06.07
V&V Edition	1
V&V Disposition and Status	OK
V&V Charge Time	20.1795987

A.2 Comments