

V&V Reference Report

L2 ASCDS Version : 8.4.4

Observation 10349 - L2 Version 2
Chandra X-Ray Center

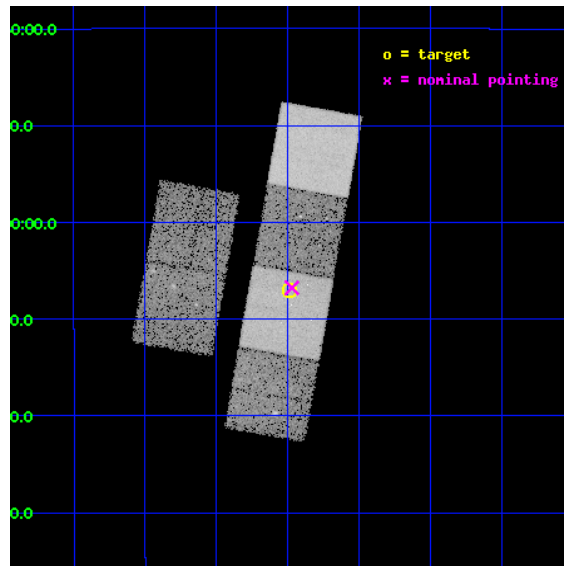
L2 Processing Date : Jun 3 2012

Contents

1	Front	2
2	OBI	3
2.1	OBI	3
2.1.1	Images	3
2.1.2	Bias	3
2.1.3	Parameters	4
2.1.4	Events	4
2.2	Compared Parameters	5
2.3	Aspect	6
2.4	Star Slots	9
2.4.1	Slot 3	9
2.4.2	Slot 4	10
2.4.3	Slot 5	11
2.4.4	Slot 6	12
2.4.5	Slot 7	13
2.5	FID Slots	14
2.5.1	Slot 0	14
2.5.2	Slot 1	15
2.5.3	Slot 2	16
A	Summary	17
A.1	Status	17
A.2	Comments	17

1 Front

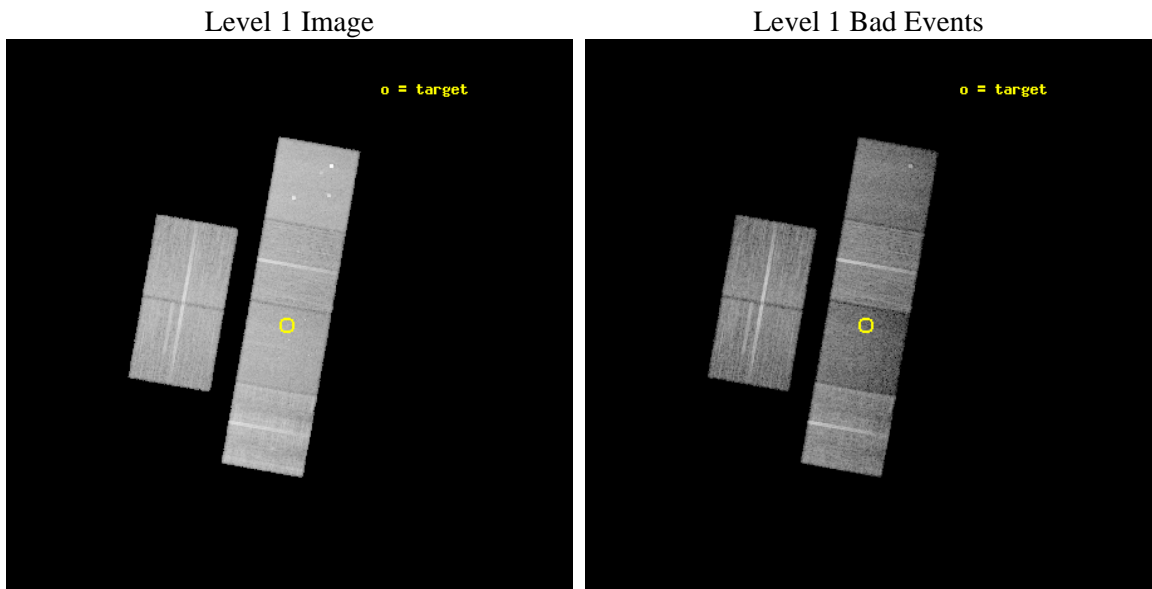
seq_num	701892	Sequence number
obs_id	10349	Observation id
title	Evolution of Activity in Massive Gas-rich Mergers: The X-ray Perspective	Proposal title
observer	Prof. Sylvain Veilleux	Principal investigator
object	F21208-0519	Source name
dtcycle	0	
cycle	P	events from which exps? Prim/Second/Both
ra_targ	320.87125	Observer's specified target RA [deg]
dec_targ	-5.116556	Observer's specified target Dec [deg]
ra_nom	320.86800660478	Nominal RA [deg]
dec_nom	-5.1129040348272	Nominal Dec [deg]
roll_nom	100.09106747655	Nominal Roll [deg]
revision	2	Processing version of data
ontime	15038.684397459	Sum of GTIs [s]
livetime	14848.25552041	Livetime [s]
ontime2	15038.725437462	Sum of GTIs [s]
ontime3	15038.561277449	Sum of GTIs [s]
ontime5	15038.643357456	Sum of GTIs [s]
ontime6	15038.602317452	Sum of GTIs [s]
ontime7	15038.684397459	Sum of GTIs [s]
ontime8	15038.520237446	Sum of GTIs [s]
l2events	177141	Number of level 2 events



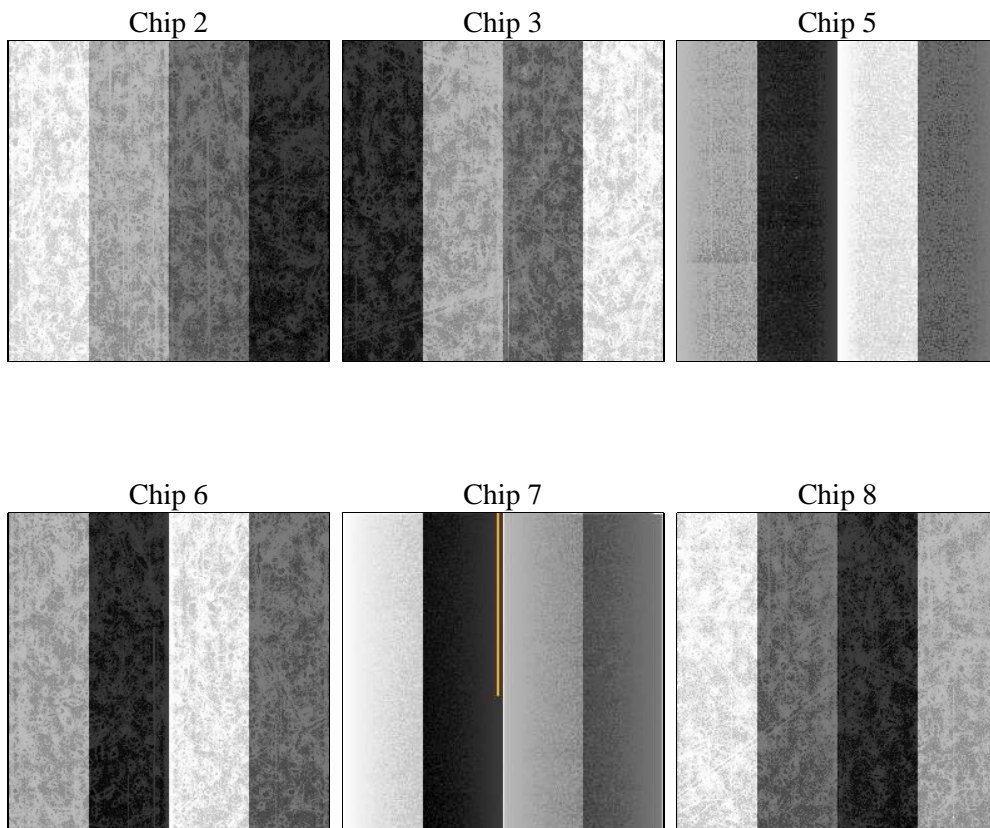
2 OBI

2.1 OBI

2.1.1 Images



2.1.2 Bias



2.1.3 Parameters

obi_num	0	Obi number	sched_exp_time	15000.000000	[s] Scheduled observation exposure time
ascdsver	8.4.4	Processing system revision	ontime	15038.684397459	Sum of GTIs [s]
caldbver	4.4.9	 	ontime2	15038.725437462	Sum of GTIs [s]
date	2012-06-03T06:54:38	Date and time of file creation	ontime3	15038.561277449	Sum of GTIs [s]
revision	2	Processing version of data	ontime5	15038.643357456	Sum of GTIs [s]
			ontime6	15038.602317452	Sum of GTIs [s]
			ontime7	15038.684397459	Sum of GTIs [s]
			ontime8	15038.520237446	Sum of GTIs [s]
			l1events	799722	Number of level 1 events

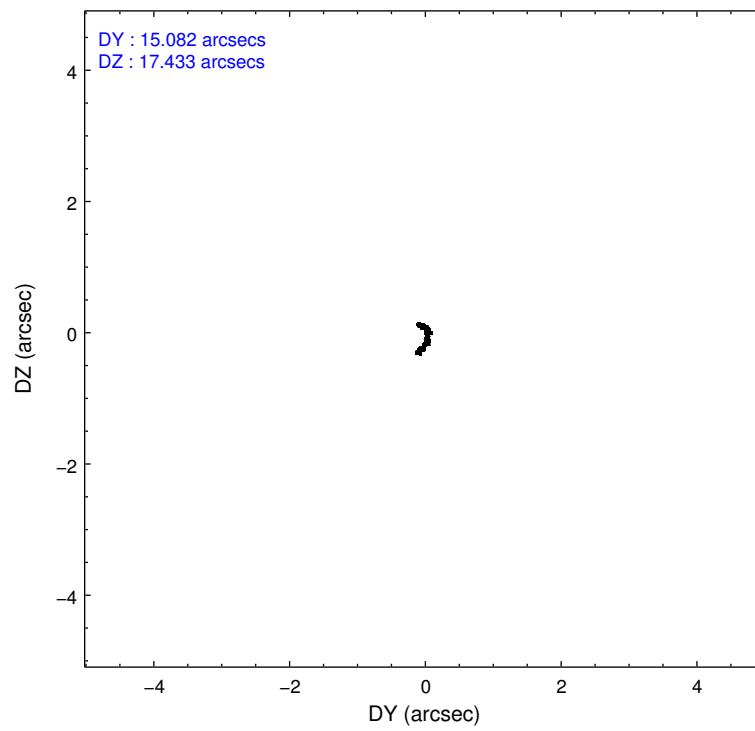
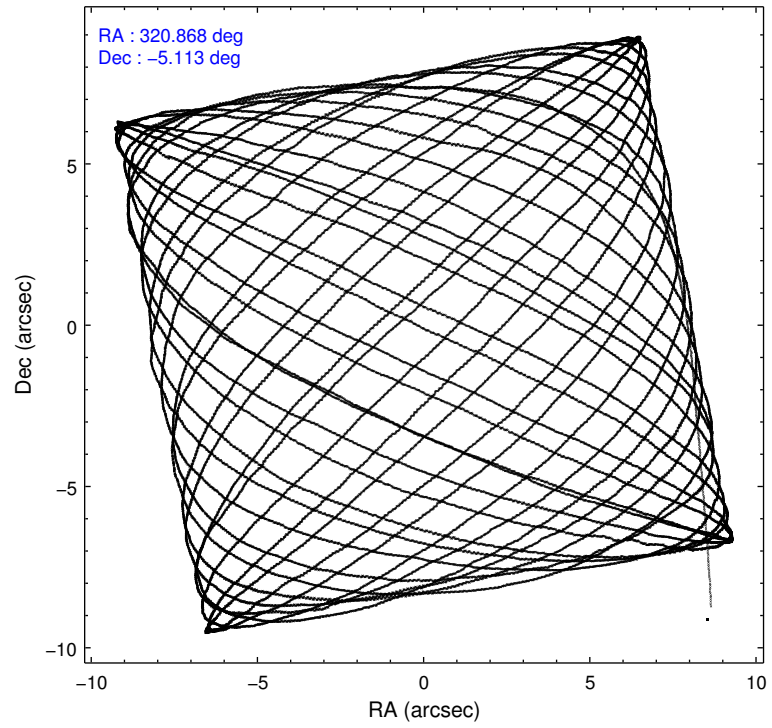
2.1.4 Events

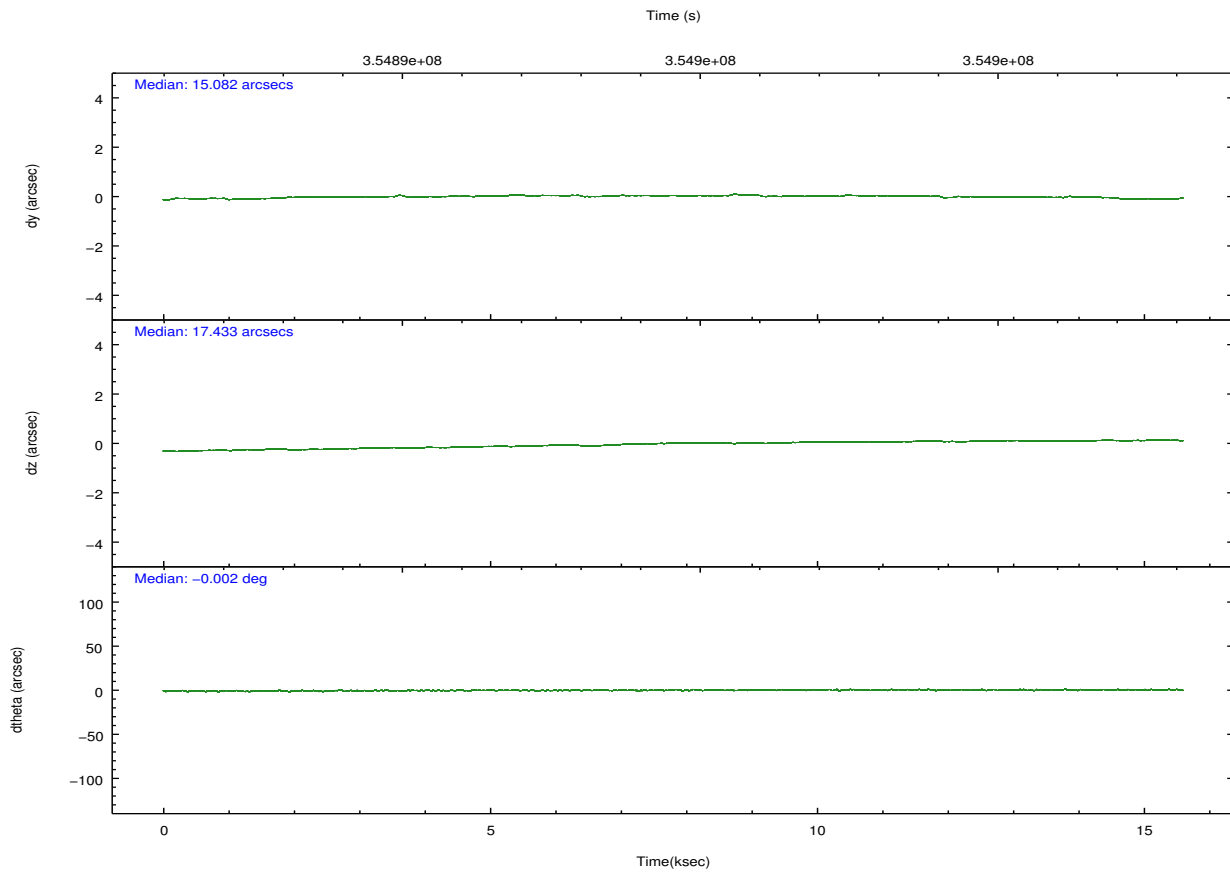
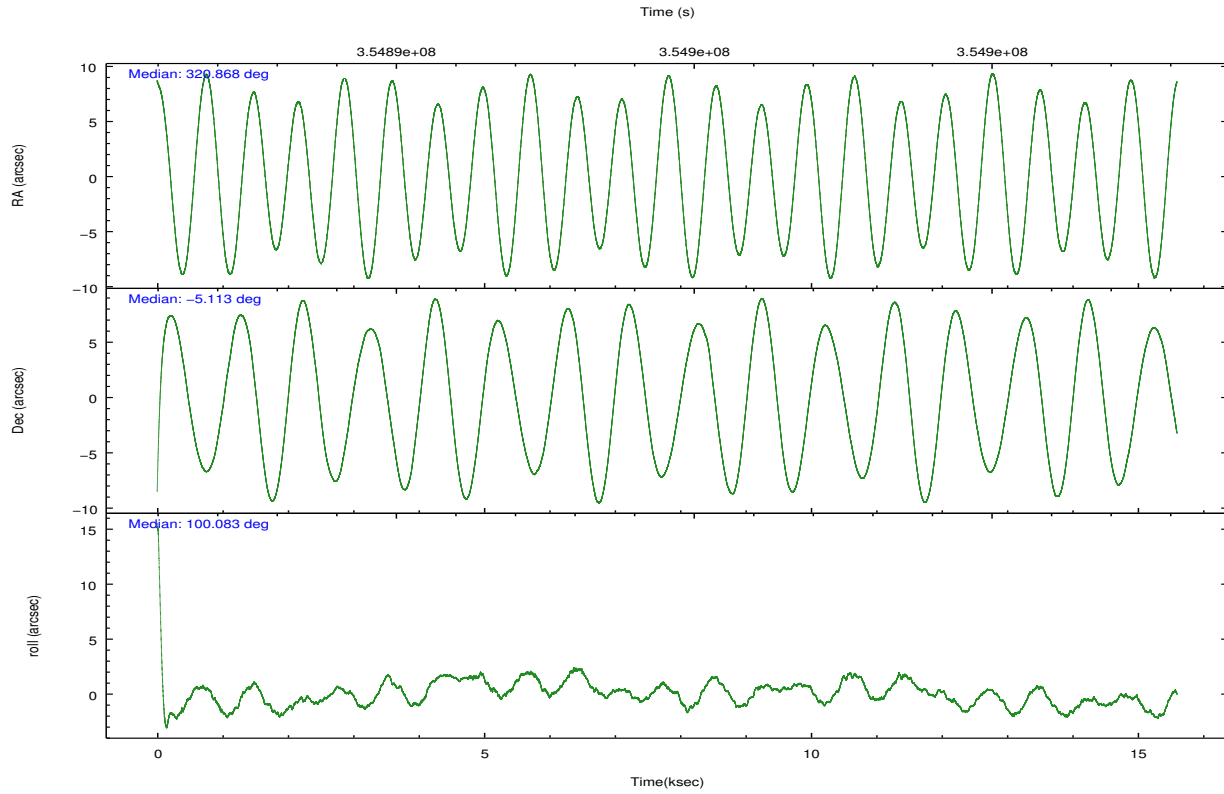
	ccd 2	ccd 3	ccd 5	ccd 6	ccd 7	ccd 8		ccd 2	ccd 3	ccd 5	ccd 6	ccd 7	ccd 8
level 1 events	126134	119847	157961	120753	118150	156877	grade 0 events	4355	4453	9733	4888	5884	11206
rejected events	114270	108292	73161	107774	59684	116099		3%	3%	6%	4%	4%	7%
rejected %	90%	90%	46%	89%	50%	74%	grade 1 events	72	68	749	79	180	100
								0%	0%	0%	0%	0%	0%
							grade 2 events	2954	2442	26579	2927	12625	9701
								2%	2%	16%	2%	10%	6%
							grade 3 events	1213	1303	3553	1315	5403	4421
								0%	1%	2%	1%	4%	2%
							grade 4 events	1228	1190	3389	1334	5455	4136
								0%	0%	2%	1%	4%	2%
							grade 5 events	3744	4082	12456	4256	12730	6533
								2%	3%	7%	3%	10%	4%
							grade 6 events	2119	2172	41586	2521	29130	11353
								1%	1%	26%	2%	24%	7%
							grade 7 events	110449	104137	59916	103433	46743	109427
								87%	86%	37%	85%	39%	69%

2.2 Compared Parameters

Parameter	Planned	Actual	Parameter	Planned	Actual
Instrument	ACIS	ACIS	Obspar format version number	7	7
Detector	ACIS-235678	ACIS-235678	Obspar file type	PREDICTED	ACTUAL
Grating	NONE	NONE	Obspar update status	NONE	UPDATED
Data mode	VFAINT	VFAINT	CCD I0 on	N	N
Observation mode	POINTING	POINTING	CCD I1 on	N	N
[deg] Pointing RA	320.885978	320.8680066047757	CCD I2 on	O1	Y
[deg] Pointing Dec	-5.133617	-5.112904034827168	CCD I3 on	O2	Y
[deg] Pointing Roll	99.936034	100.0910674765455	CCD S0 on	N	N
[mm] SIM focus pos	-0.684267	-0.6828225247311905	CCD S1 on	O3	Y
[mm] SIM defocus	0	0.001444936568705701	CCD S2 on	O4	Y
[mm] SIM translation stage pos	-190.132523	-190.1400660498719	CCD S3 on	Y	Y
[mm] SIM translation stage offset	0	0.00754346686406393	CCD S4 on	O5	Y
[s] Observation start time (MET)	354887341.184000	354885980.44355	CCD S5 on	N	N
Observation start date	2009-03-31T11:47:55	2009-03-31T11:26:20	Number of optional ACIS chips dropped	0	0
[s] Observation end time (MET)	354902341.184000	354903277.31941	On-chip summing requested	N	N
Observation end date	2009-03-31T15:57:55	2009-03-31T16:14:37	Subarray requested	NONE	NONE
Read mode	TIMED	TIMED	Alternating exposures requested	N	N
			[s] Primary exposure time	0.000000	3.2

2.3 Aspect





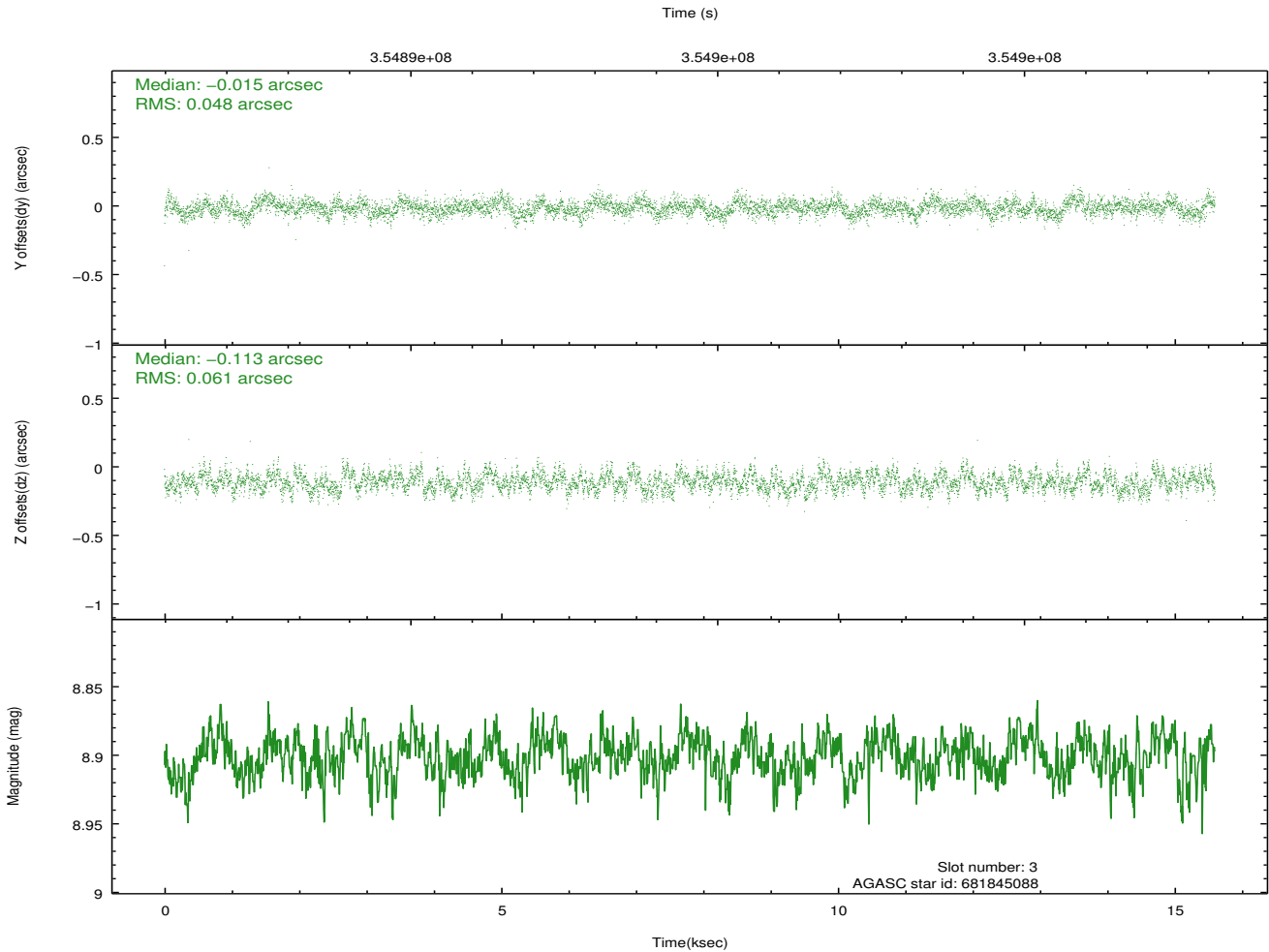
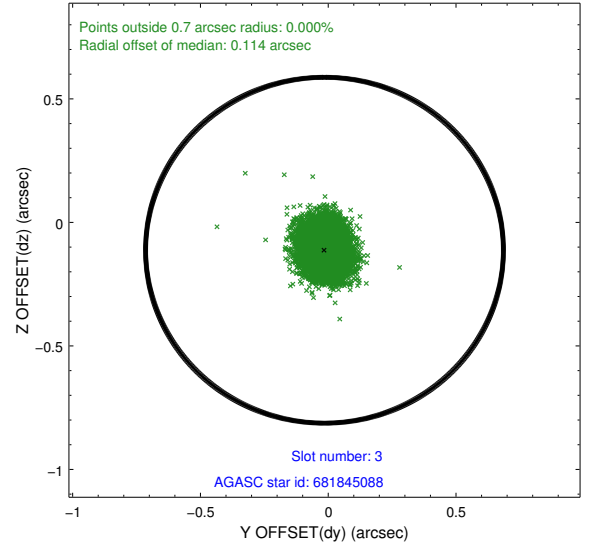
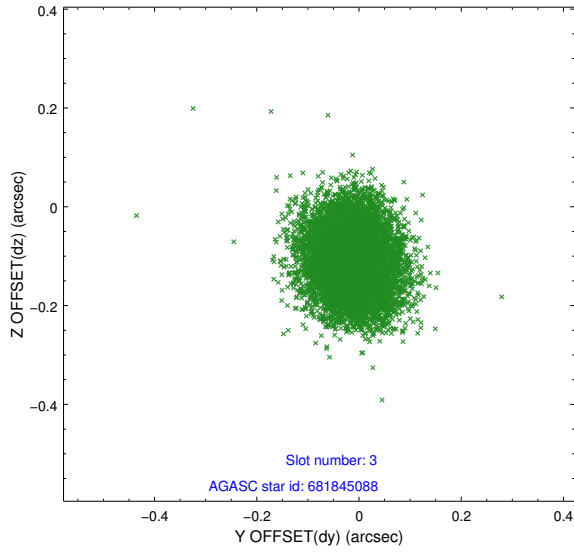
Slot Statistics

slot	status	id	mag	n_pts	med_dy	med_dz	dr1	dr2	ra	dec	mean_y	mean_z
0	FID	ACIS-S-2	6.88	3805	-0.060	-0.036	0.008	0.013	0.000000	0.000000	-768.15	-1738.84
1	FID	ACIS-S-4	6.97	3805	0.163	0.039	0.006	0.011	0.000000	0.000000	2145.27	169.34
2	FID	ACIS-S-5	7.00	3805	-0.135	0.006	0.007	0.012	0.000000	0.000000	-1820.65	163.41
3	GUIDE	681845088	8.90	7600	-0.015	-0.113	0.083	0.133	320.406640	-5.318699	-360.97	1807.57
4	GUIDE	681974024	7.04	7610	0.011	0.304	0.066	0.102	321.178430	-5.581308	-1769.01	-753.52
5	GUIDE	682369064	9.50	7597	0.016	-0.292	0.096	0.158	320.377222	-5.793078	-2025.49	2204.46
6	GUIDE	682496328	8.44	7607	0.092	0.236	0.063	0.103	321.279739	-5.699757	-2251.50	-1037.06
7	GUIDE	682496880	6.15	7609	-0.107	-0.137	0.049	0.083	320.654232	-5.633315	-1629.72	1128.30

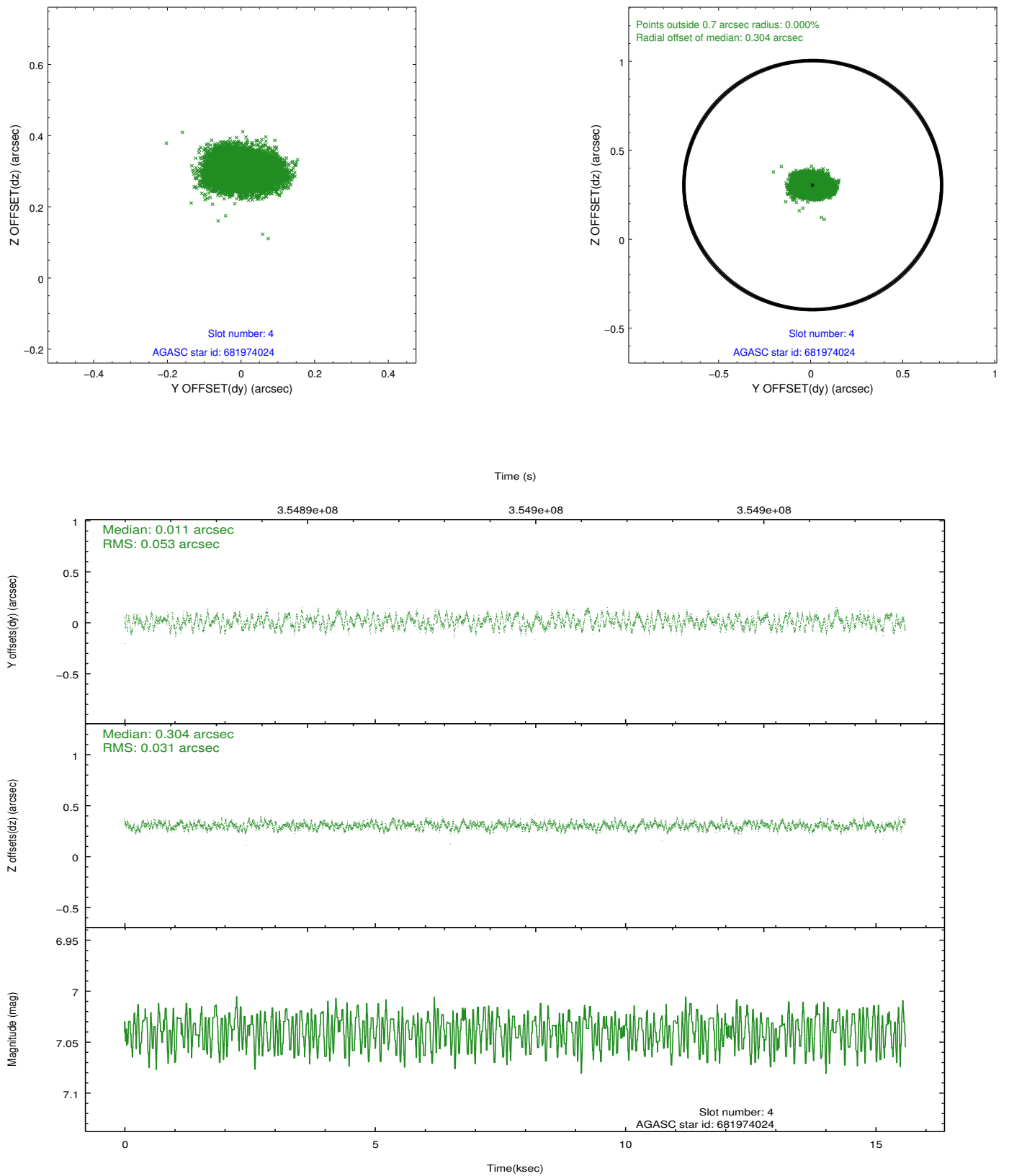
∞

2.4 Star Slots

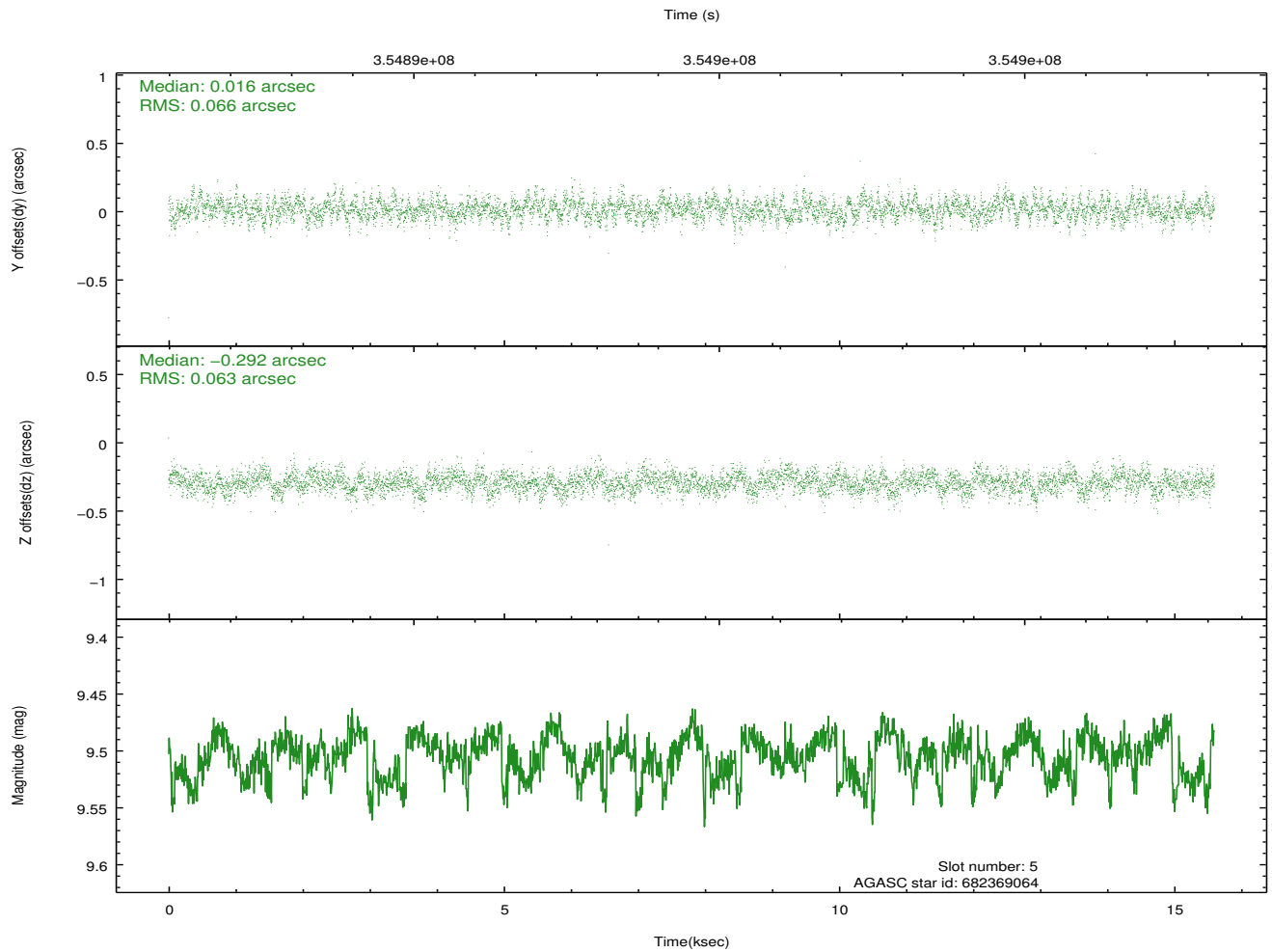
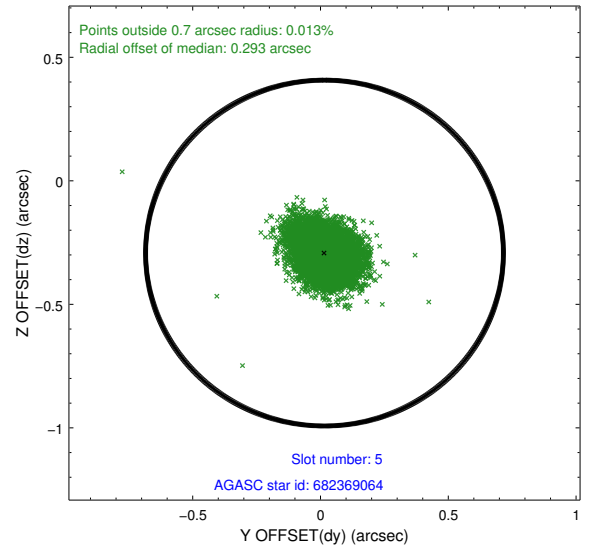
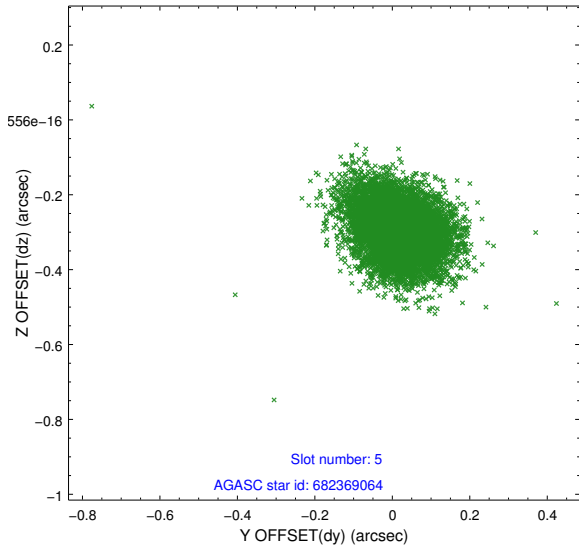
2.4.1 Slot 3



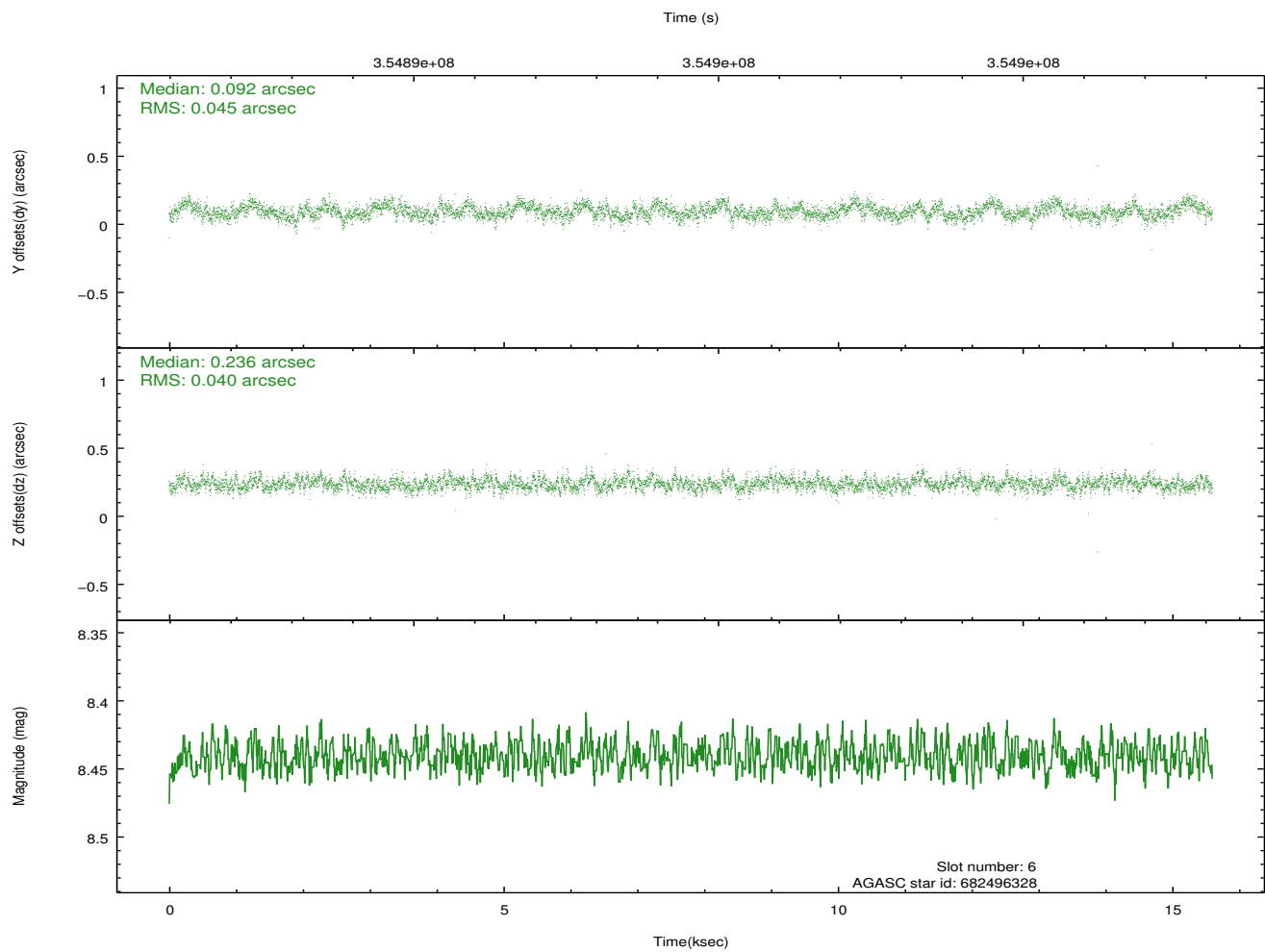
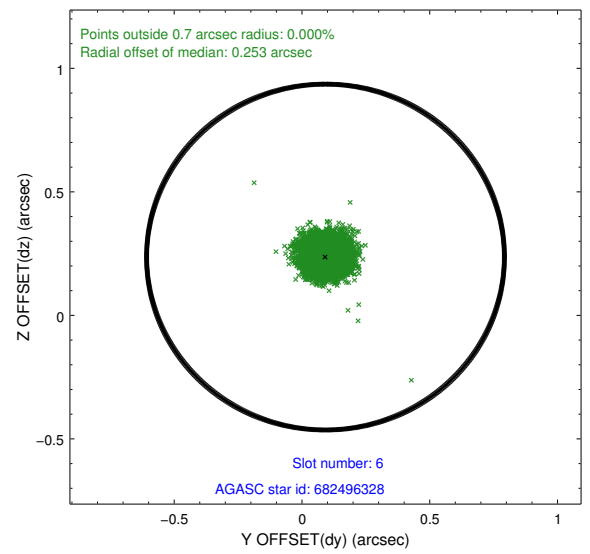
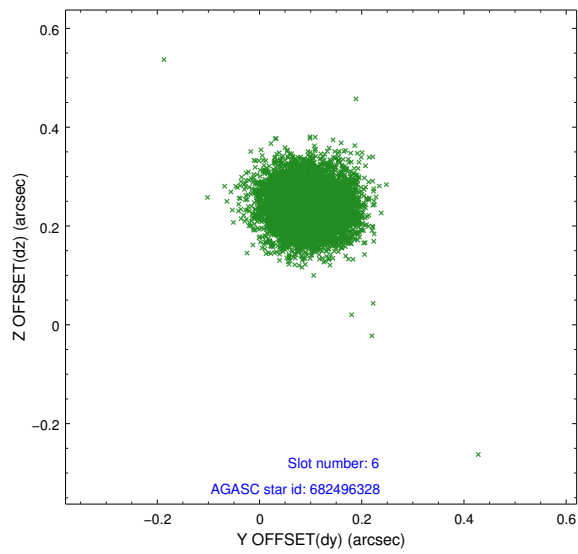
2.4.2 Slot 4



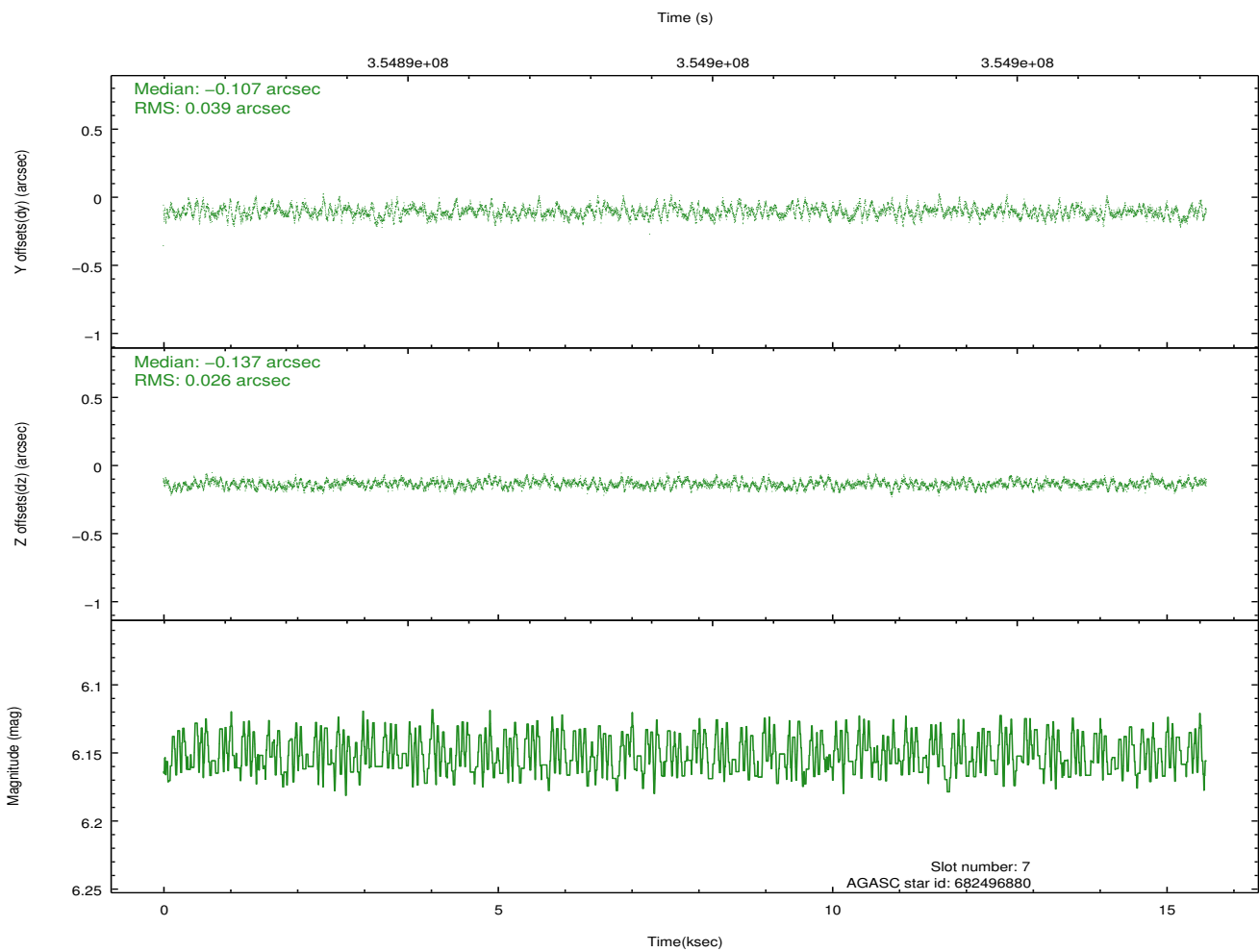
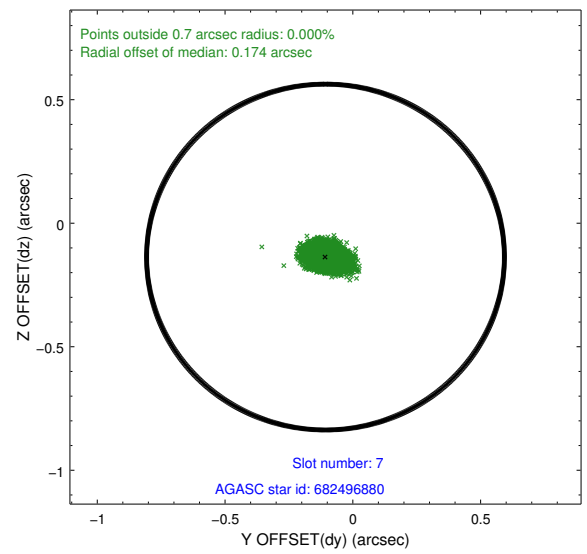
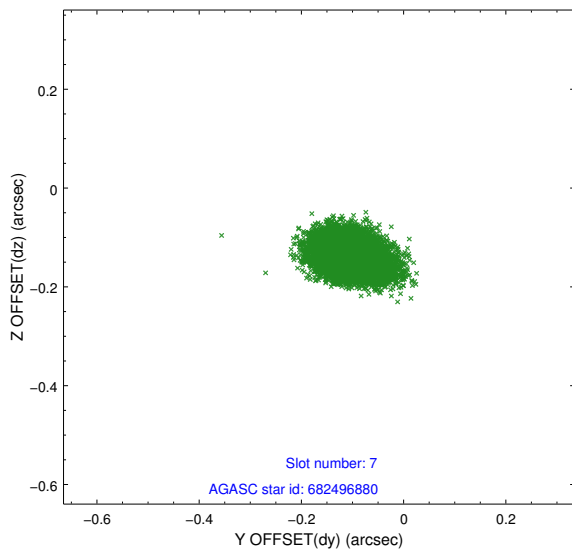
2.4.3 Slot 5



2.4.4 Slot 6

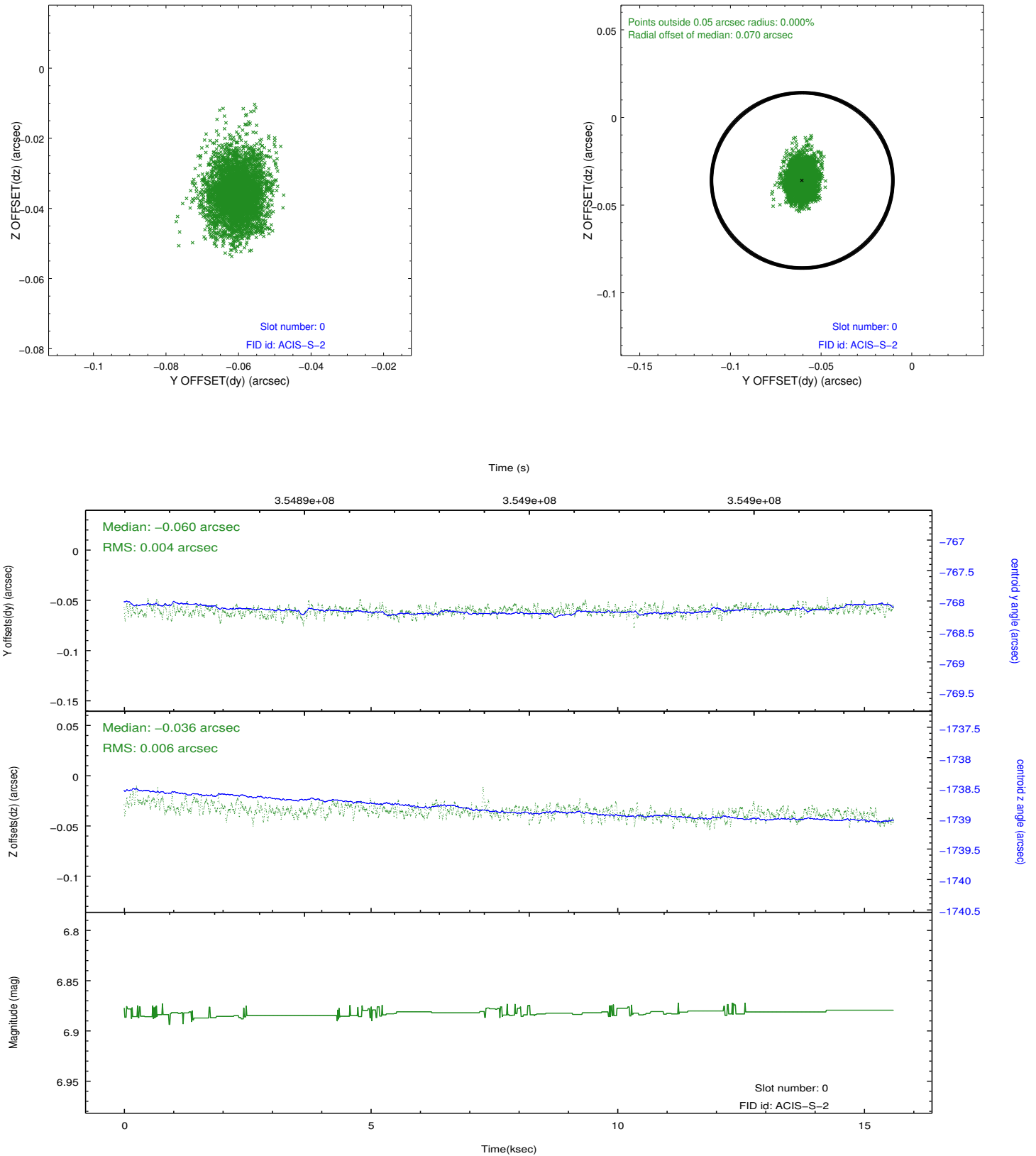


2.4.5 Slot 7

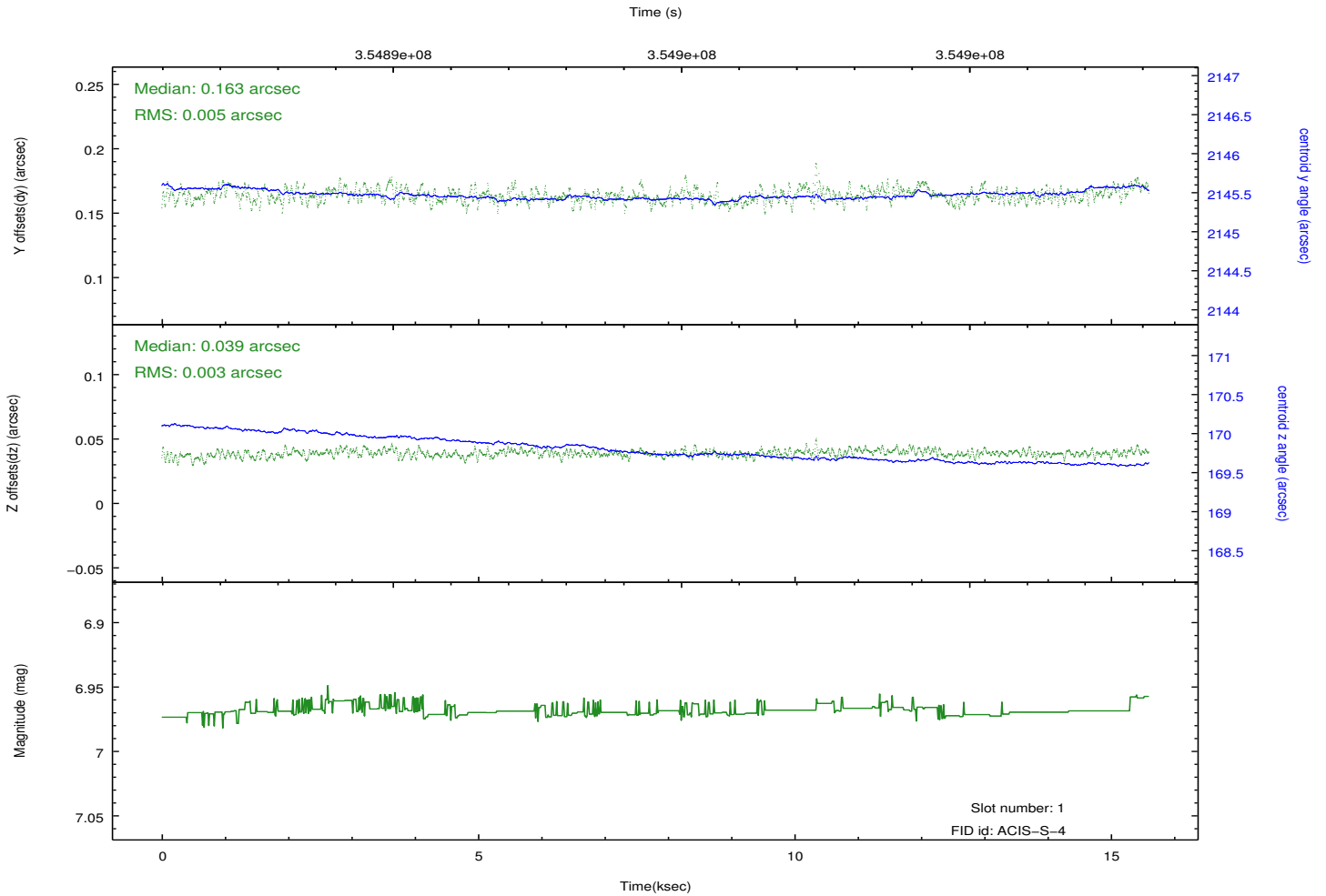
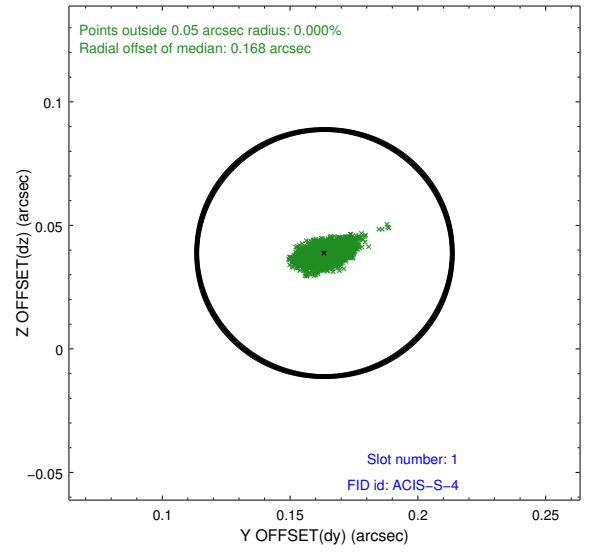
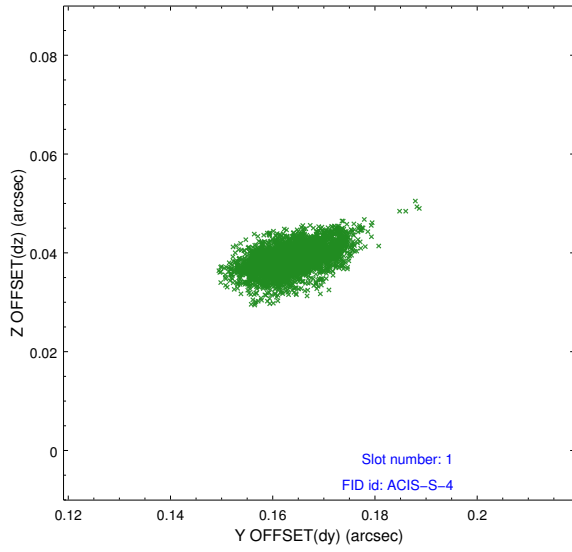


2.5 FID Slots

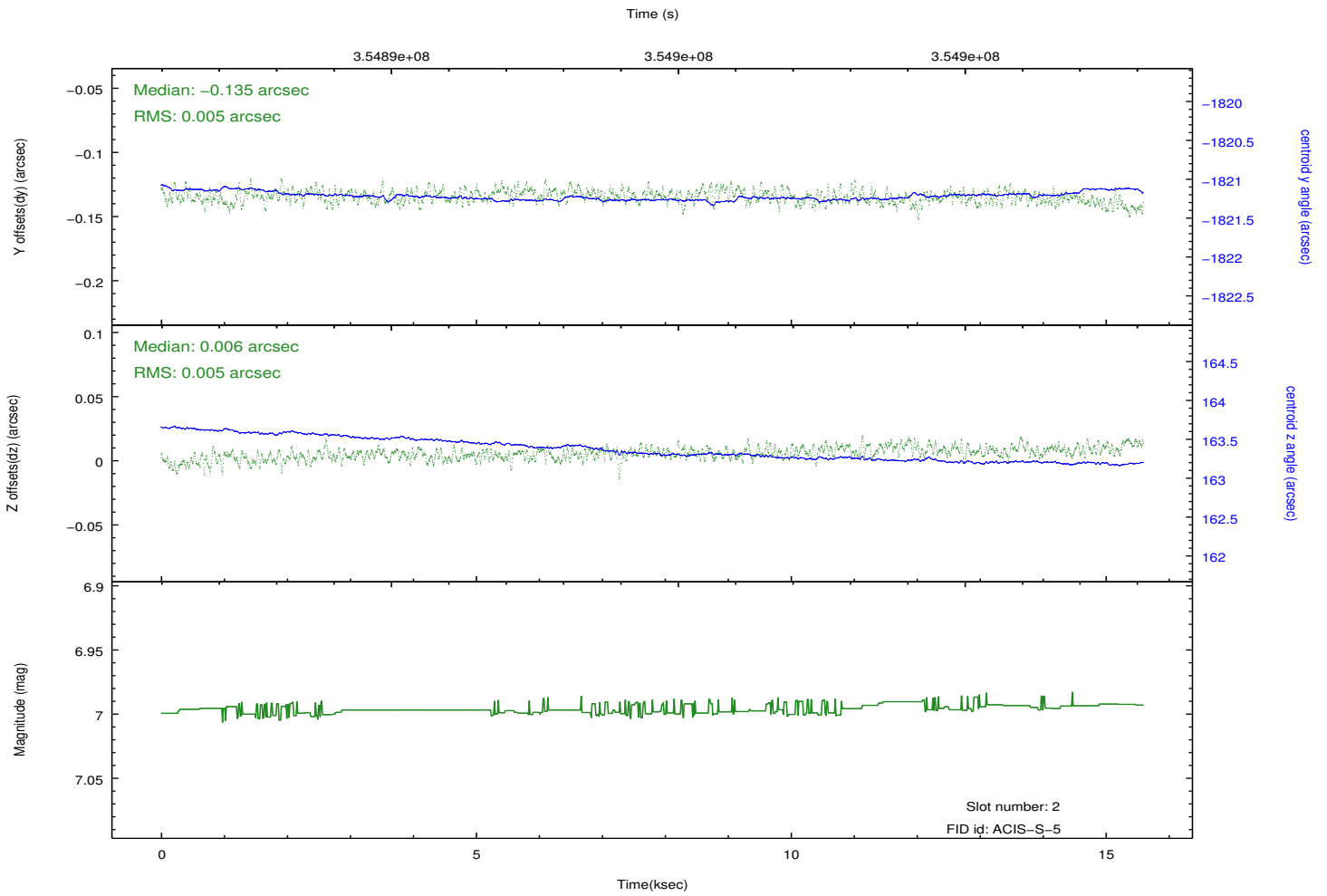
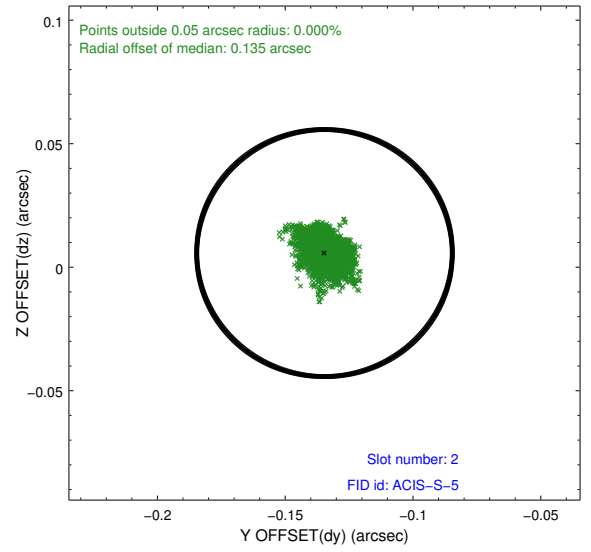
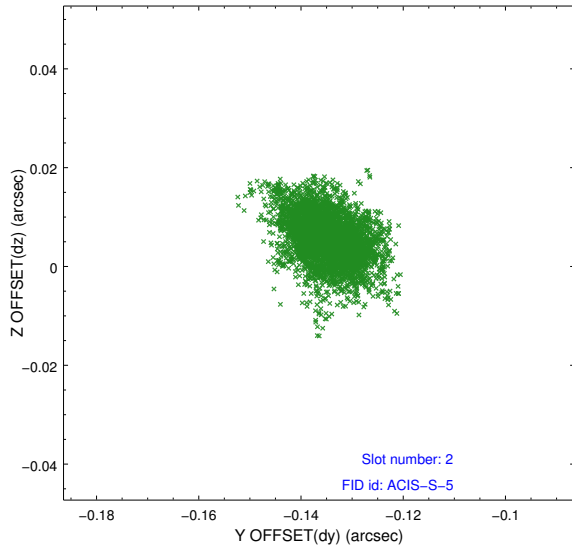
2.5.1 Slot 0



2.5.2 Slot 1



2.5.3 Slot 2



A Summary

A.1 Status

V&V Scientist	Joy Nichols
V&V Date (YYYY-MM-DD)	2012.06.07
V&V Edition	1
V&V Disposition and Status	OK
V&V Charge Time	15.0399999

A.2 Comments