

# V&V Reference Report

## L2 ASCDS Version : 8.4.5

Observation 1039 - L2 Version 3  
Chandra X-Ray Center

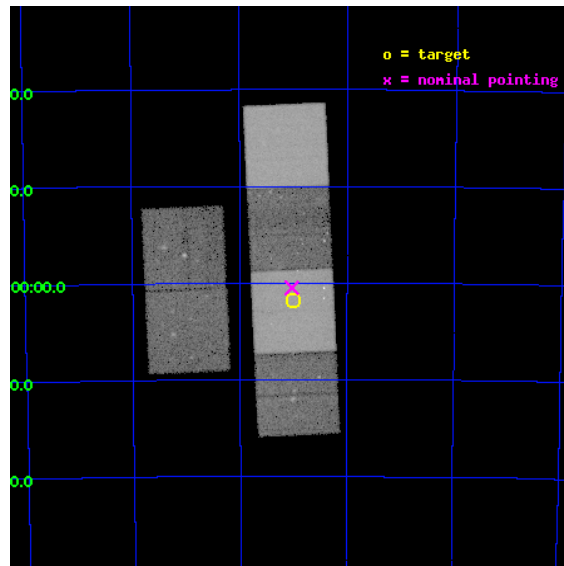
L2 Processing Date : Sep 5 2012

## Contents

<b>1</b>	<b>Front</b>	<b>2</b>
<b>2</b>	<b>OBI</b>	<b>3</b>
2.1	OBI . . . . .	3
2.1.1	Images . . . . .	3
2.1.2	Bias . . . . .	3
2.1.3	Parameters . . . . .	4
2.1.4	Events . . . . .	4
2.2	Compared Parameters . . . . .	5
2.3	Aspect . . . . .	6
2.4	Star Slots . . . . .	9
2.4.1	Slot 3 . . . . .	9
2.4.2	Slot 4 . . . . .	10
2.4.3	Slot 5 . . . . .	11
2.4.4	Slot 6 . . . . .	12
2.4.5	Slot 7 . . . . .	13
2.5	FID Slots . . . . .	14
2.5.1	Slot 0 . . . . .	14
2.5.2	Slot 1 . . . . .	15
2.5.3	Slot 2 . . . . .	16
<b>A</b>	<b>Summary</b>	<b>17</b>
A.1	Status . . . . .	17
A.2	Comments . . . . .	17

# 1 Front

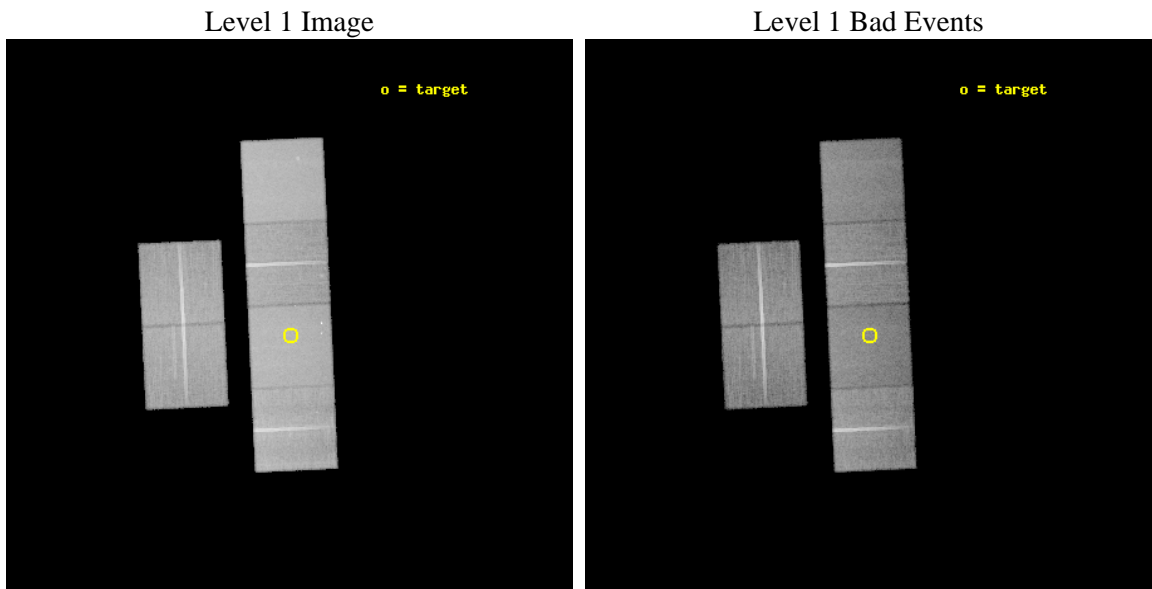
seq_num	500105	Sequence number
obs_id	1039	Observation id
title	ACIS OBSERVATION OF THE LMC SUPERNOVA REMNANT N23	Proposal title
observer	DR STEPHEN HOLT	Principal investigator
object	Mispointing	Source name
dtcycle	0	&#160
cycle	P	events from which exps? Prim/Second/Both
ra_targ	88.75	Observer's specified target RA [deg]
dec_targ	-68.029167	Observer's specified target Dec [deg]
ra_nom	88.757473219821	Nominal RA [deg]
dec_nom	-68.008359632933	Nominal Dec [deg]
roll_nom	87.360314179564	Nominal Roll [deg]
revision	3	Processing version of data
ontime	40054.400037289	Sum of GTIs [s]
livetime	39547.207106152	Livetime [s]
ontime2	40054.400037289	Sum of GTIs [s]
ontime3	40054.400037289	Sum of GTIs [s]
ontime5	40054.400037289	Sum of GTIs [s]
ontime6	40054.400037289	Sum of GTIs [s]
ontime7	40054.400037289	Sum of GTIs [s]
ontime8	40054.400037289	Sum of GTIs [s]
l2events	396828	Number of level 2 events



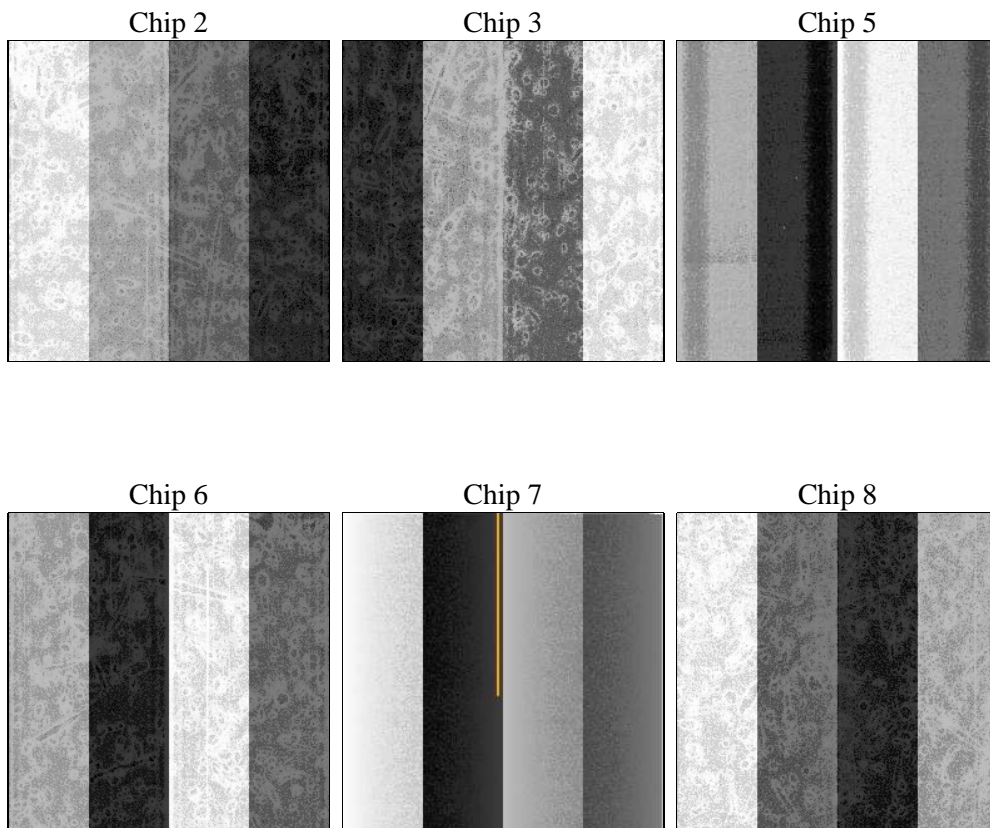
## 2 OBI

### 2.1 OBI

#### 2.1.1 Images



#### 2.1.2 Bias



### 2.1.3 Parameters

obi_num	0	Obi number	sched_exp_time	40000.000000	[s] Scheduled observation exposure time
ascdsver	8.4.5	Processing system revision	ontime	40054.400037289	Sum of GTIs [s]
caldbver	4.5.1.1	&#160	ontime2	40054.400037289	Sum of GTIs [s]
date	2012-09-05T12:37:37	Date and time of file creation	ontime3	40054.400037289	Sum of GTIs [s]
revision	3	Processing version of data	ontime5	40054.400037289	Sum of GTIs [s]
			ontime6	40054.400037289	Sum of GTIs [s]
			ontime7	40054.400037289	Sum of GTIs [s]
			ontime8	40054.400037289	Sum of GTIs [s]
			l1events	1679216	Number of level 1 events

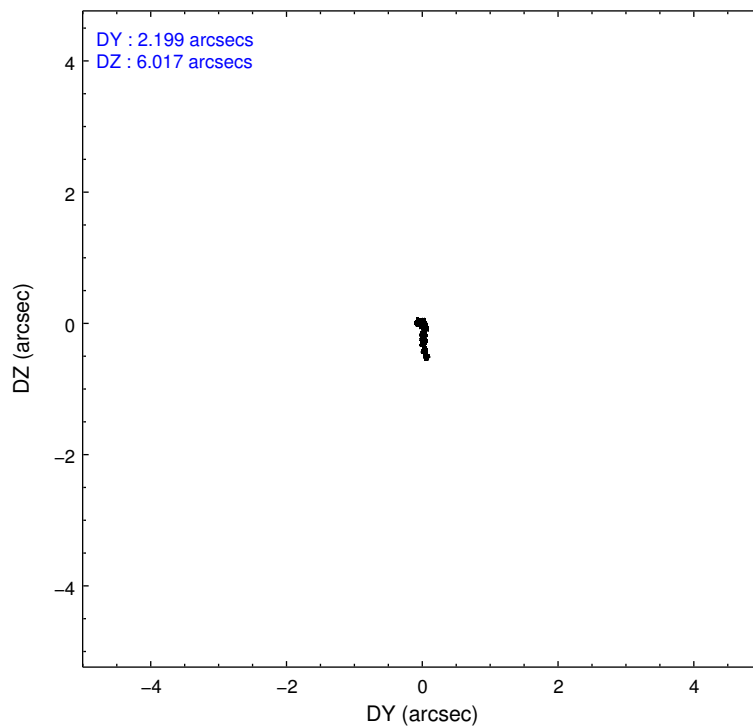
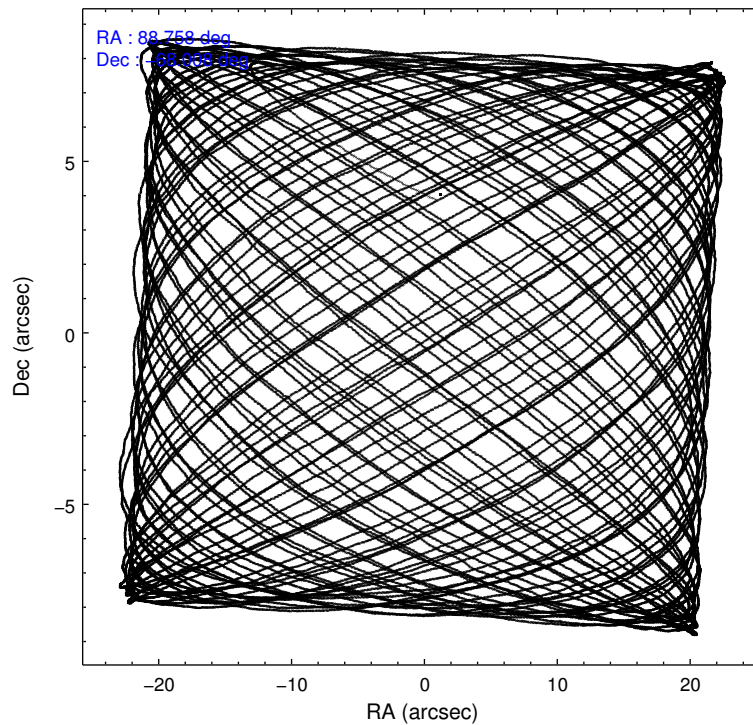
### 2.1.4 Events

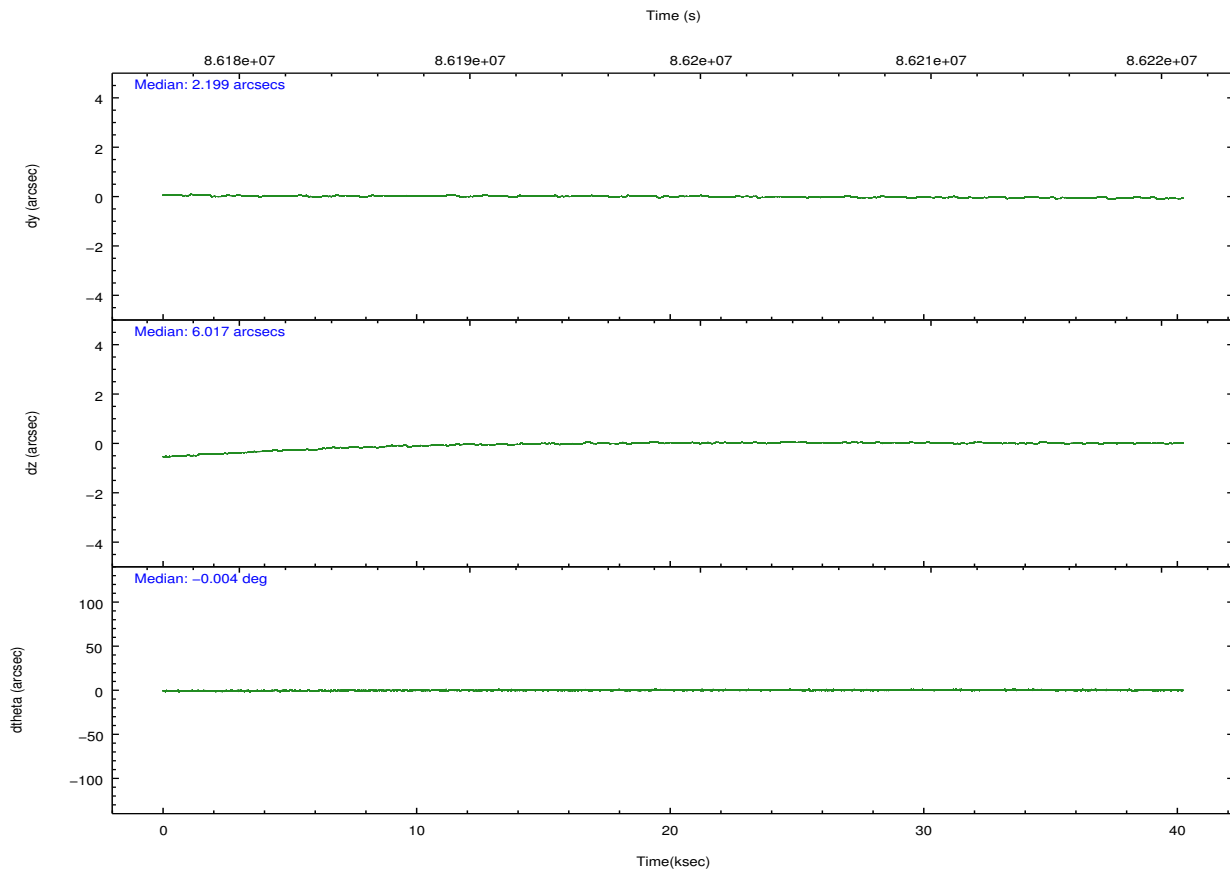
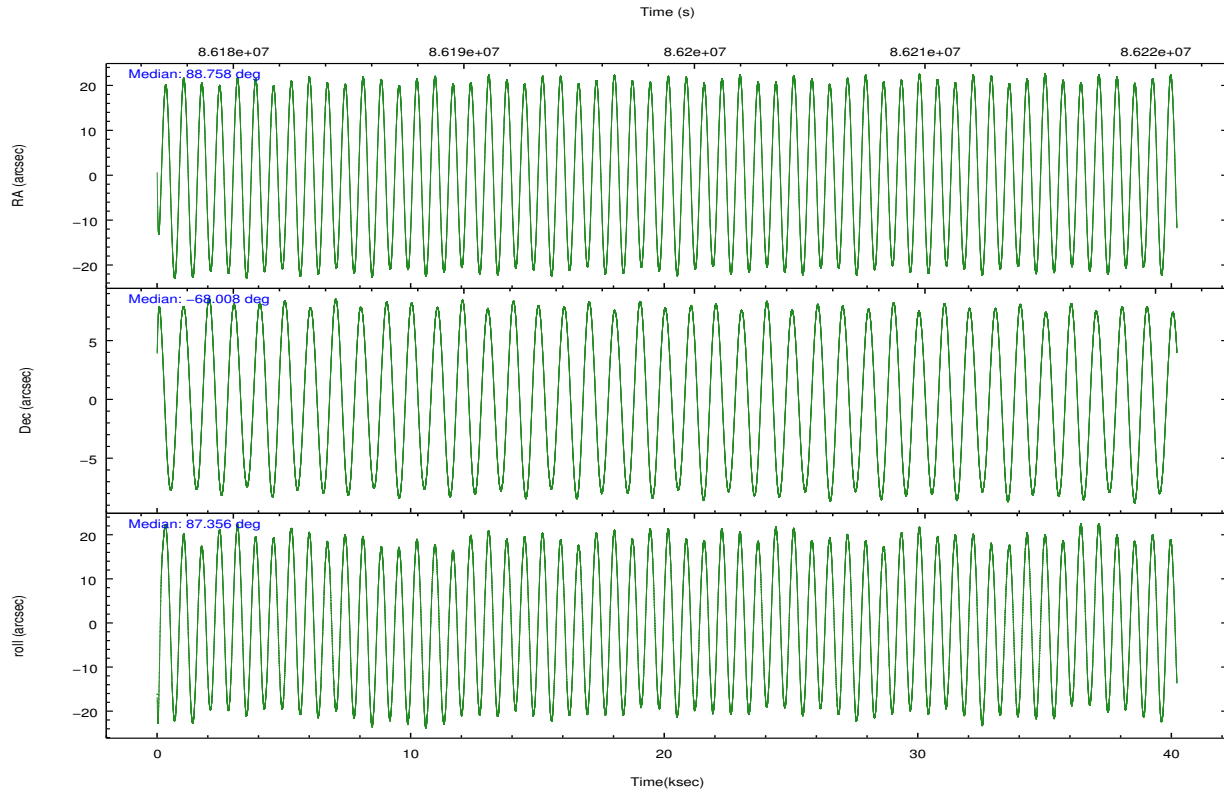
	ccd 2	ccd 3	ccd 5	ccd 6	ccd 7	ccd 8		ccd 2	ccd 3	ccd 5	ccd 6	ccd 7	ccd 8
level 1 events	244434	235172	336432	244147	316310	302721	grade 0 events	11397	11593	15754	12325	16104	19032
rejected events	217848	208551	175518	215536	172584	244596		4%	4%	4%	5%	5%	6%
rejected %	89%	88%	52%	88%	54%	80%	grade 1 events	133	127	392	96	255	191
								0%	0%	0%	0%	0%	0%
							grade 2 events	5679	5111	46385	5482	28488	12288
								2%	2%	13%	2%	9%	4%
							grade 3 events	2547	2640	8334	2839	13210	6395
								1%	1%	2%	1%	4%	2%
							grade 4 events	2475	2613	7988	2651	13401	5836
								1%	1%	2%	1%	4%	1%
							grade 5 events	8140	8573	25858	9683	28533	12455
								3%	3%	7%	3%	9%	4%
							grade 6 events	4493	4669	82480	5322	72551	14590
								1%	1%	24%	2%	22%	4%
							grade 7 events	209570	199846	149241	205749	143768	231934
								85%	84%	44%	84%	45%	76%

## 2.2 Compared Parameters

Parameter	Planned	Actual	Parameter	Planned	Actual
Instrument	ACIS	ACIS	Obspar format version number	7	7
Detector	ACIS-235678	ACIS-235678	Obspar file type	PREDICTED	ACTUAL
Grating	NONE	NONE	Obspar update status	NONE	UPDATED
Data mode	FAINT	FAINT	Number of optional ACIS chips dropped	0	0
Observation mode	POINTING	POINTING	On-chip summing requested	N	N
[deg] Pointing RA	88.791483	88.75747321982089	Subarray requested	NONE	NONE
[deg] Pointing Dec	-68.032582	-68.00835963293343	Alternating exposures requested	N	N
[deg] Pointing Roll	87.235225	87.36031417956436	[s] Primary exposure time	0.000000	3.2
[mm] SIM focus pos	-0.684267	-0.6828225247311905			
[mm] SIM defocus	0	0.001444936568705701			
[mm] SIM translation stage pos	-190.132523	-190.1400660498719			
[mm] SIM translation stage offset	0	0.00754346686406393			
[s] Observation start time (MET)	86178884.184000	86177872.715179			
Observation start date	2000-09-24T10:33:40	2000-09-24T10:17:52			
[s] Observation end time (MET)	86218884.184000	86219663.504252			
Observation end date	2000-09-24T21:40:20	2000-09-24T21:54:23			
Read mode	TIMED	TIMED			

## 2.3 Aspect



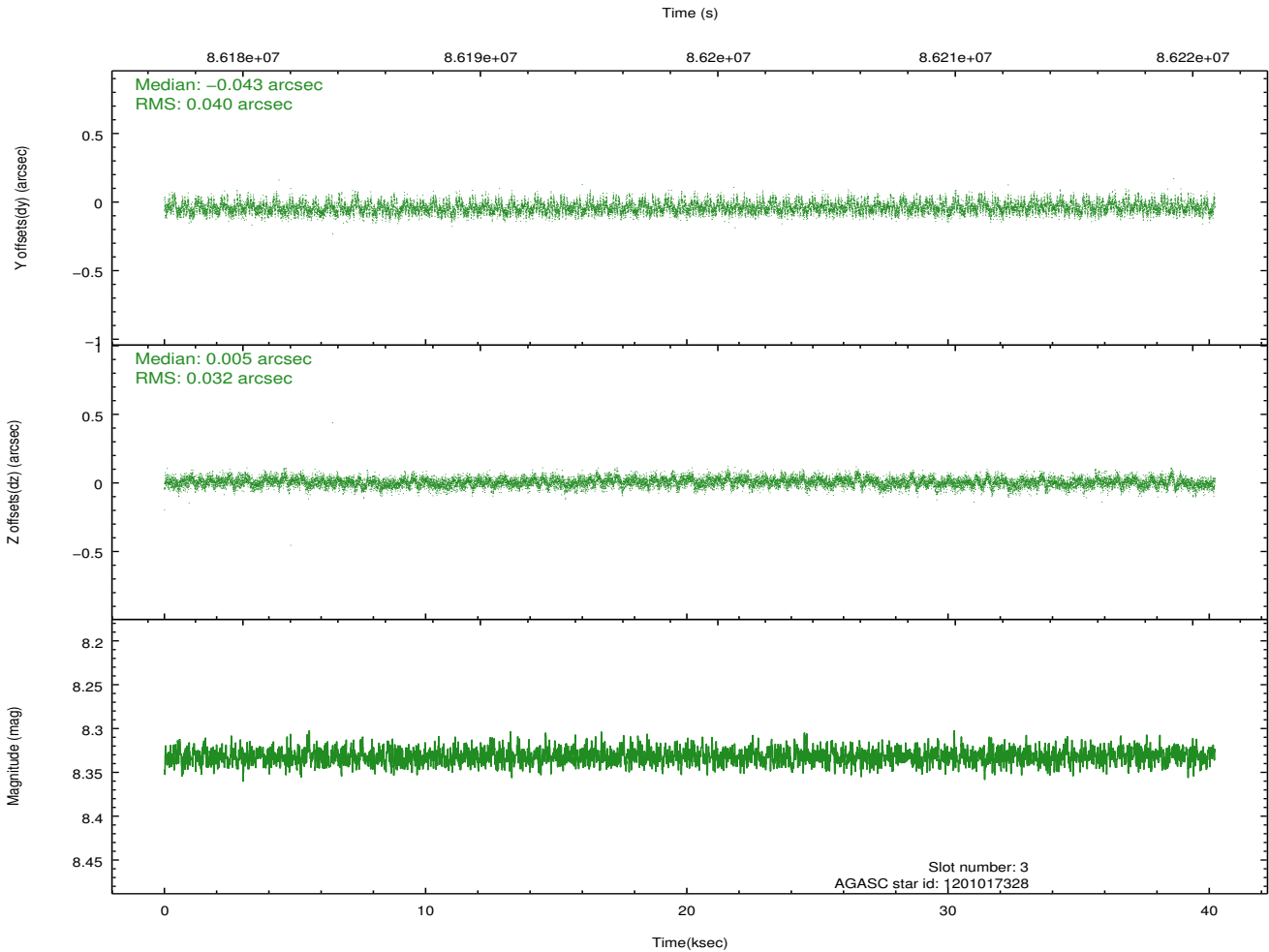
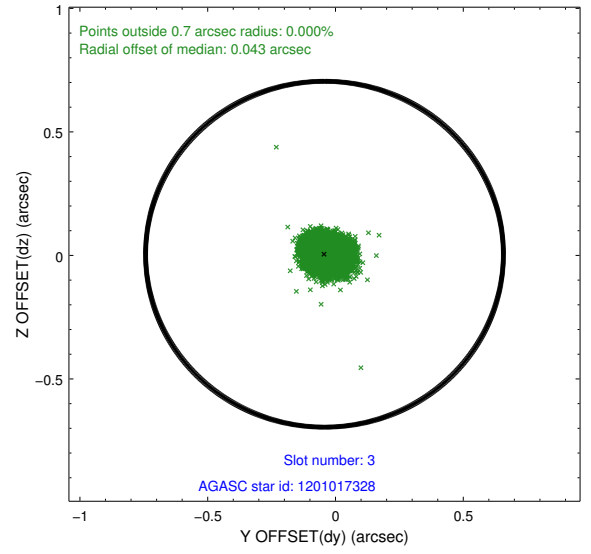
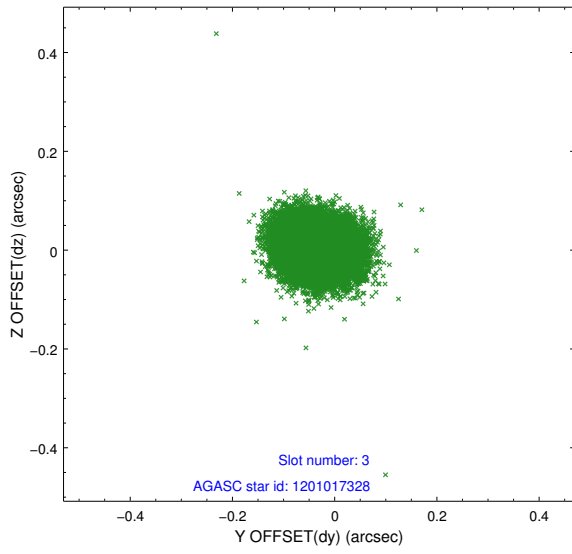


### Slot Statistics

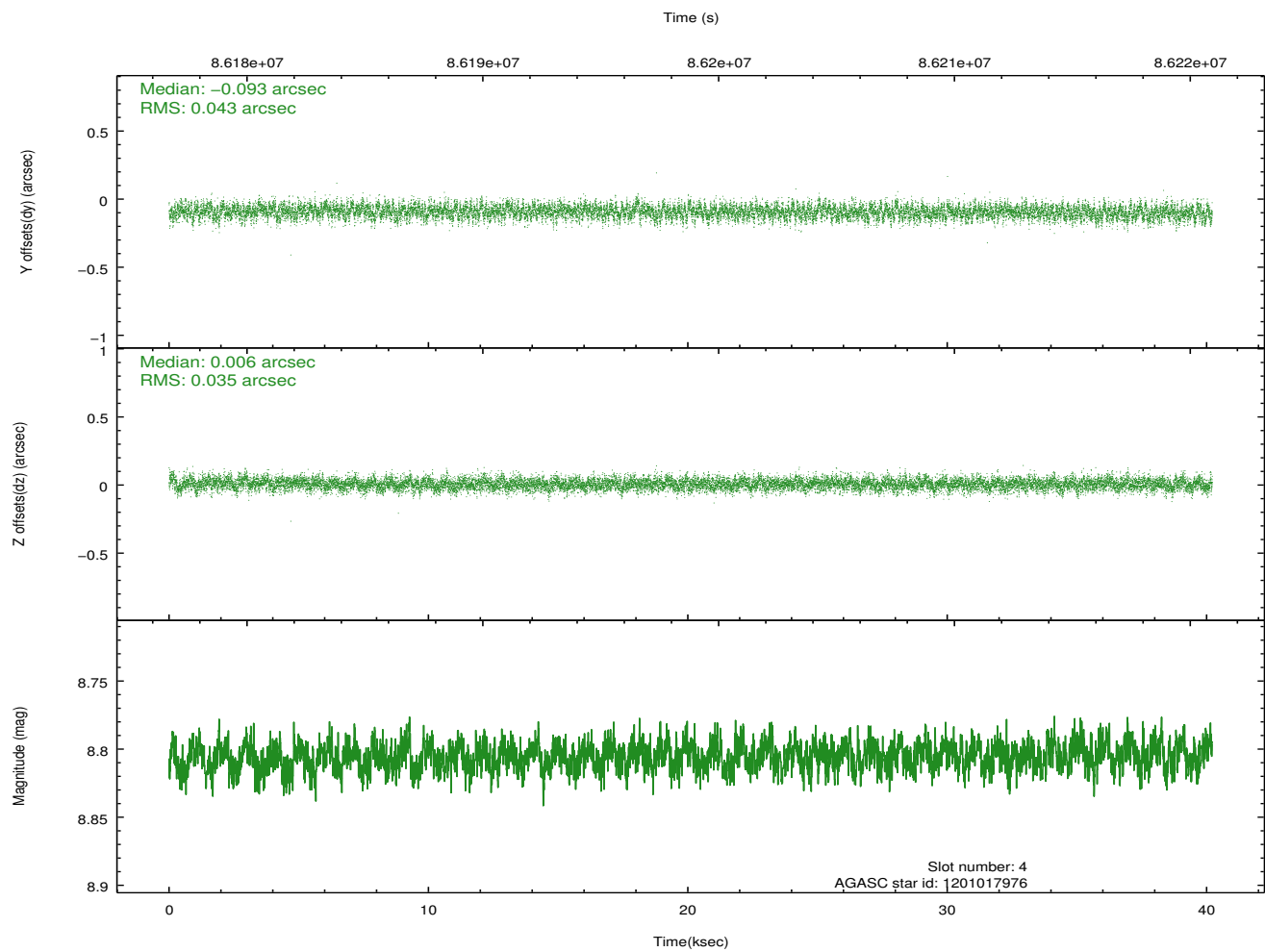
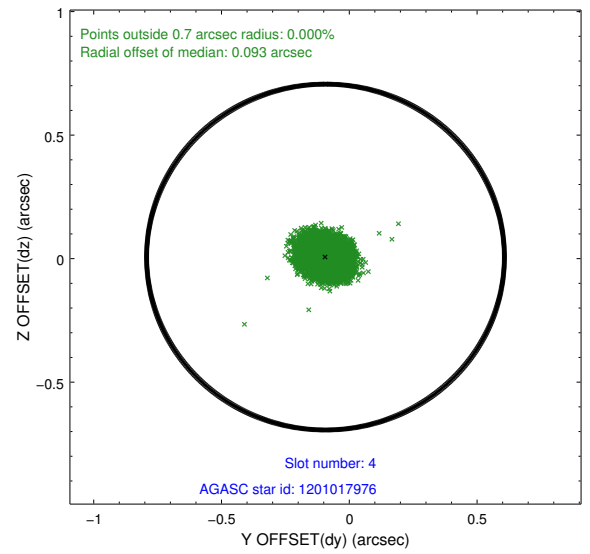
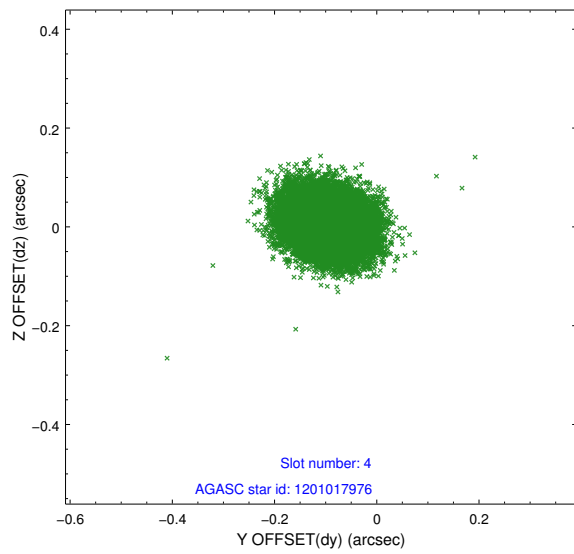
slot	status	id	mag	n_pts	med_dy	med_dz	dr1	dr2	ra	dec	mean_y	mean_z
0	FID	ACIS-S-3	7.36	9809	-0.083	-0.066	0.009	0.022	0.000000	0.000000	58.31	-1856.21
1	FID	ACIS-S-4	7.21	9808	0.018	0.075	0.007	0.012	0.000000	0.000000	2158.56	181.45
2	FID	ACIS-S-5	7.24	9808	0.037	0.001	0.008	0.014	0.000000	0.000000	-1807.60	175.06
3	GUIDE	1201017328	8.33	19613	-0.043	0.005	0.054	0.089	87.666995	-68.431296	-1519.69	1416.90
4	GUIDE	1201017976	8.81	19612	-0.093	0.006	0.059	0.096	88.118191	-67.571861	1606.31	1004.18
5	GUIDE	1201013296	9.47	19610	0.025	0.021	0.080	0.131	89.907922	-67.843737	738.25	-1481.15
6	GUIDE	1201016984	9.35	19616	0.098	-0.090	0.076	0.127	88.759065	-67.714570	1141.01	99.88
7	GUIDE	1201017992	10.05	19604	0.008	0.057	0.114	0.187	88.249208	-68.442620	-1512.65	645.57

## 2.4 Star Slots

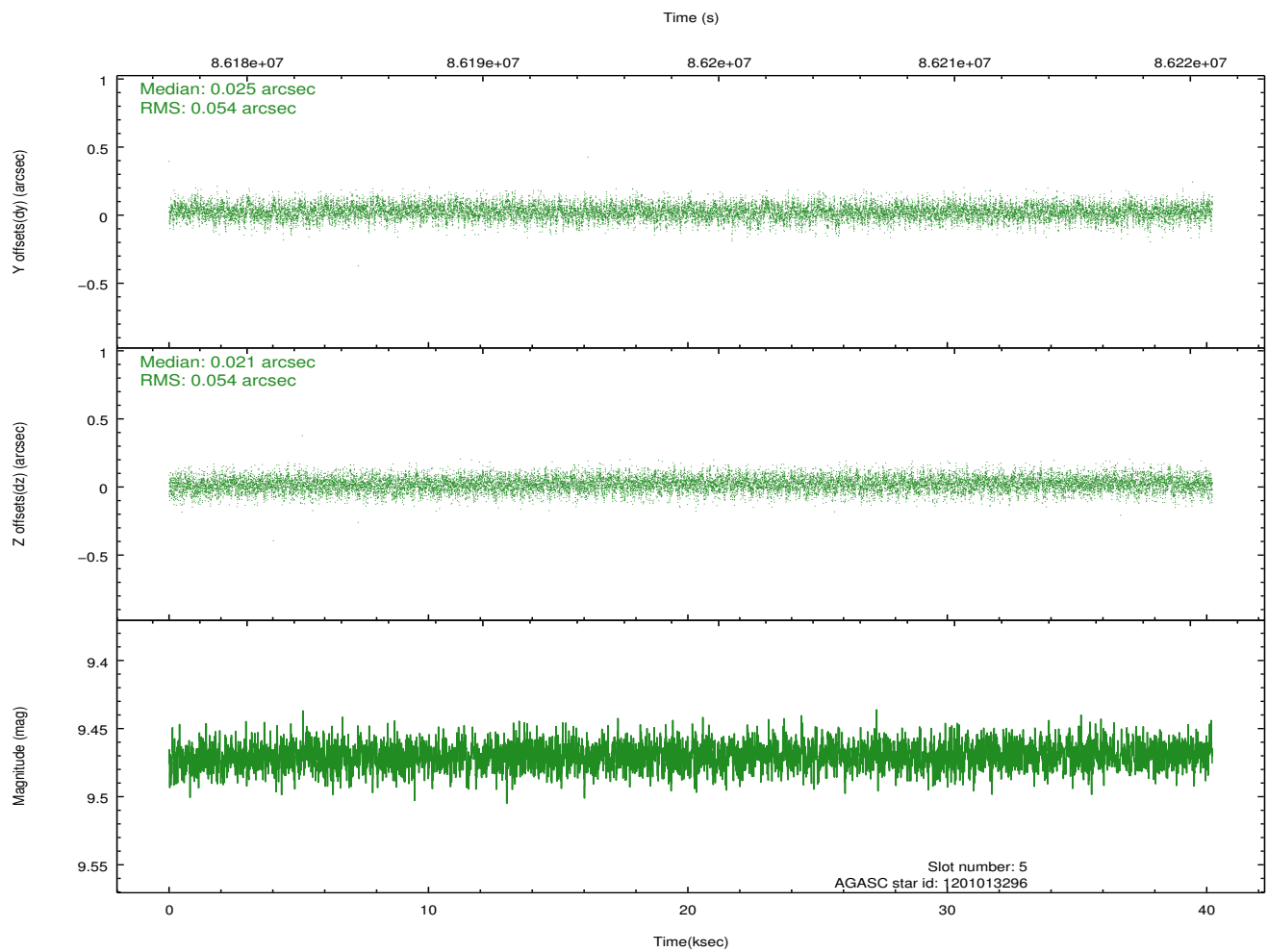
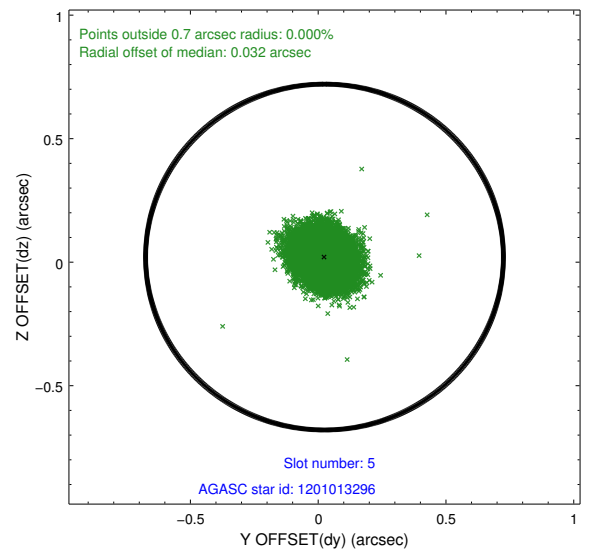
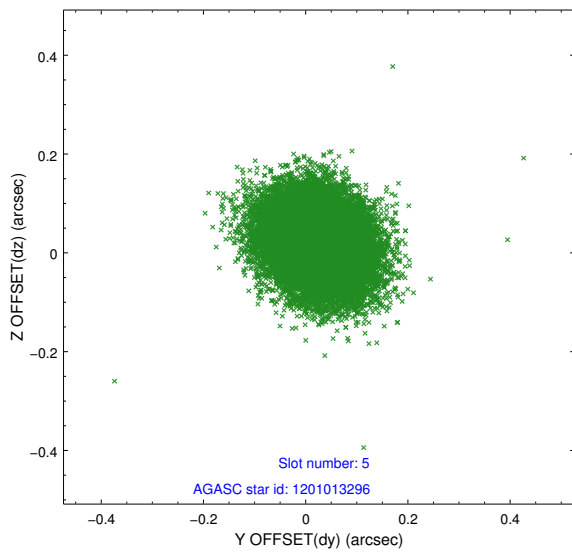
### 2.4.1 Slot 3



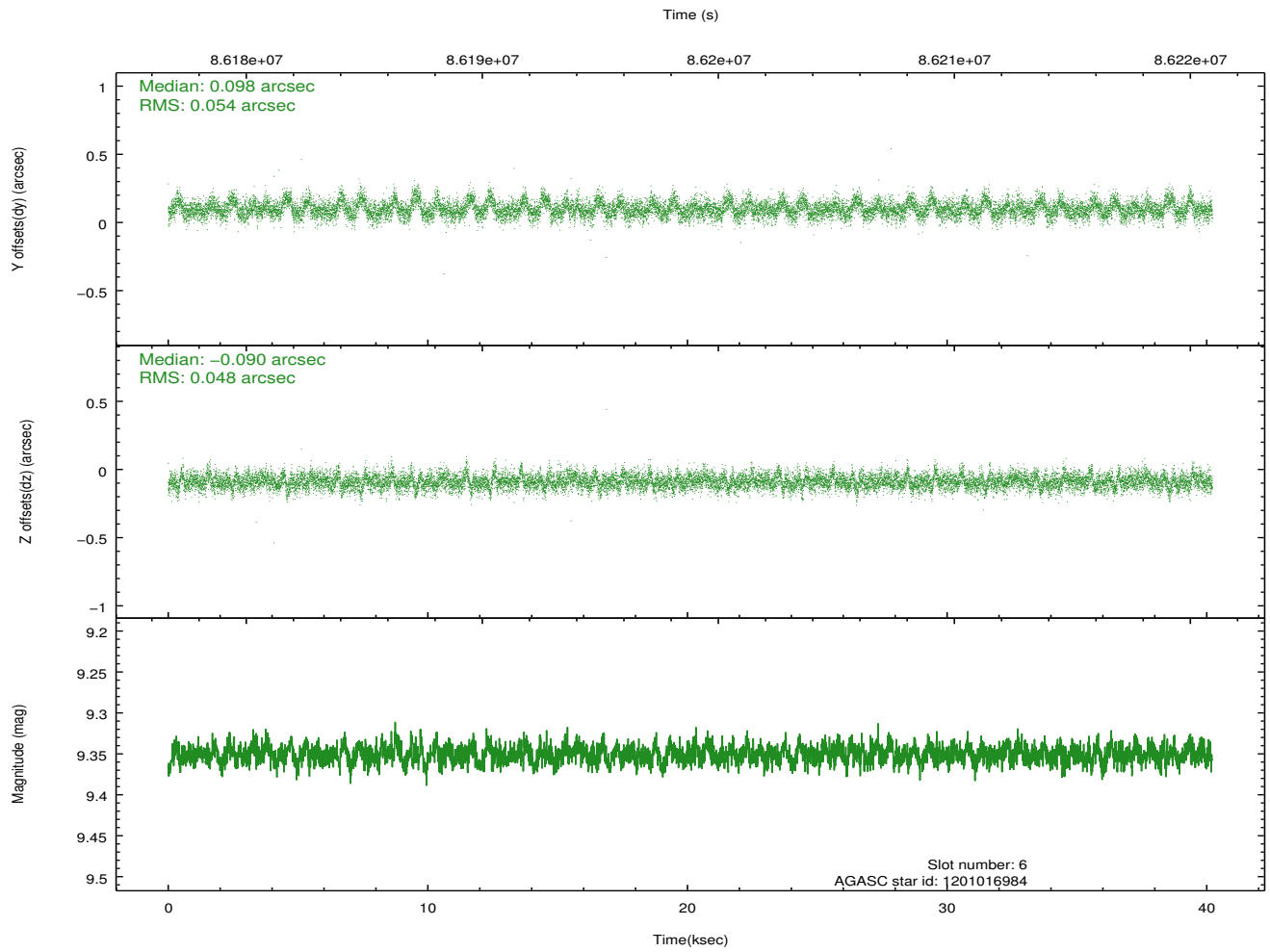
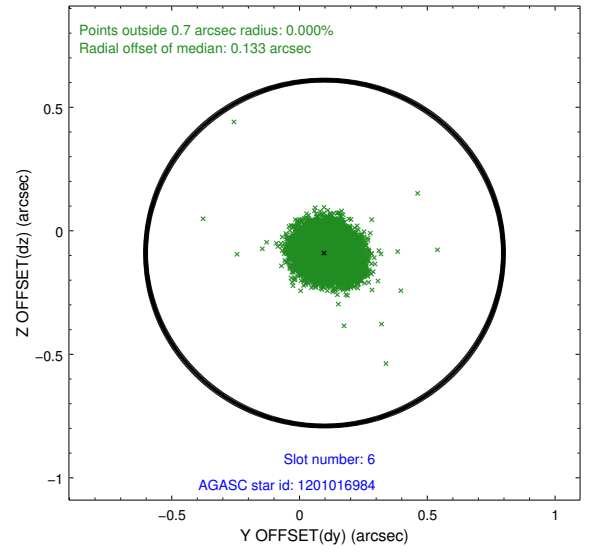
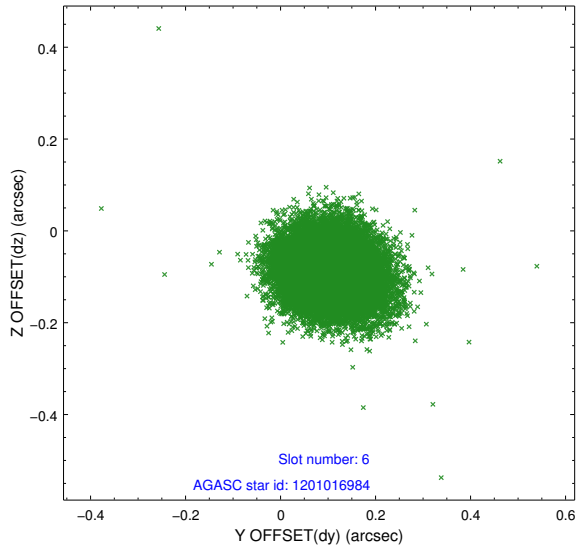
## 2.4.2 Slot 4



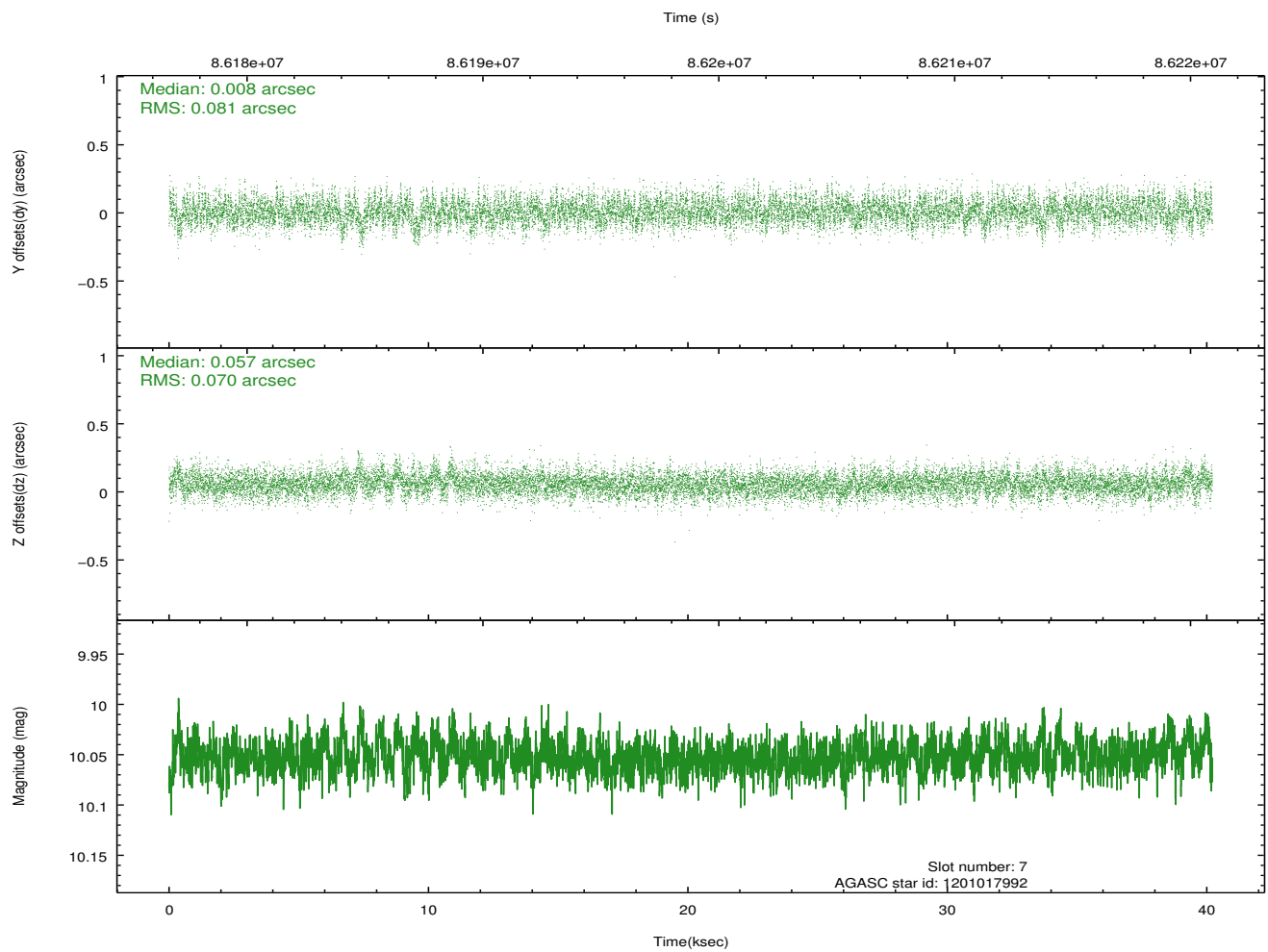
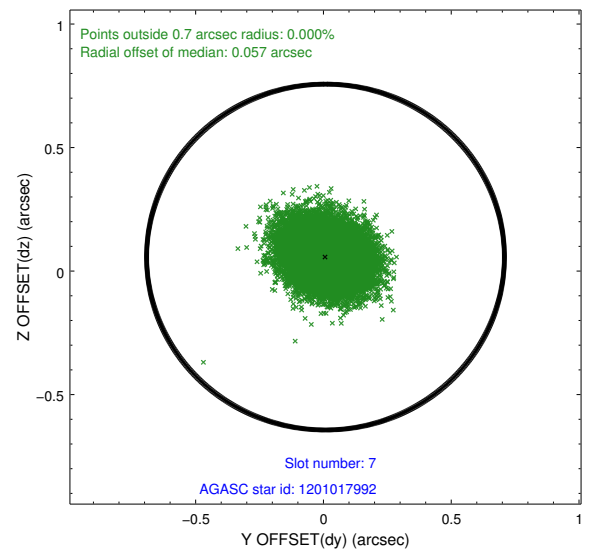
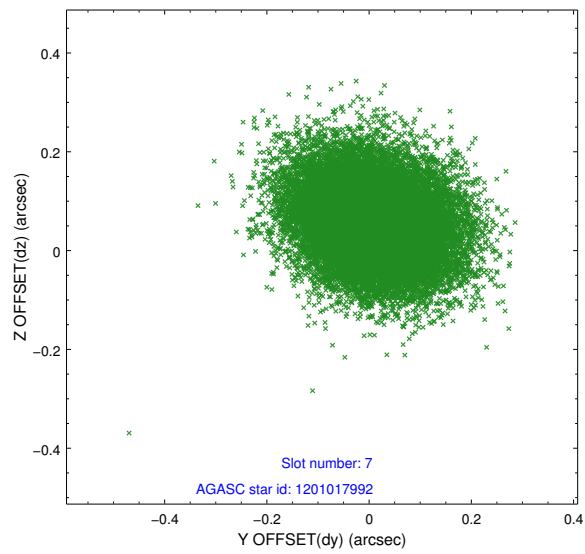
### 2.4.3 Slot 5



### 2.4.4 Slot 6

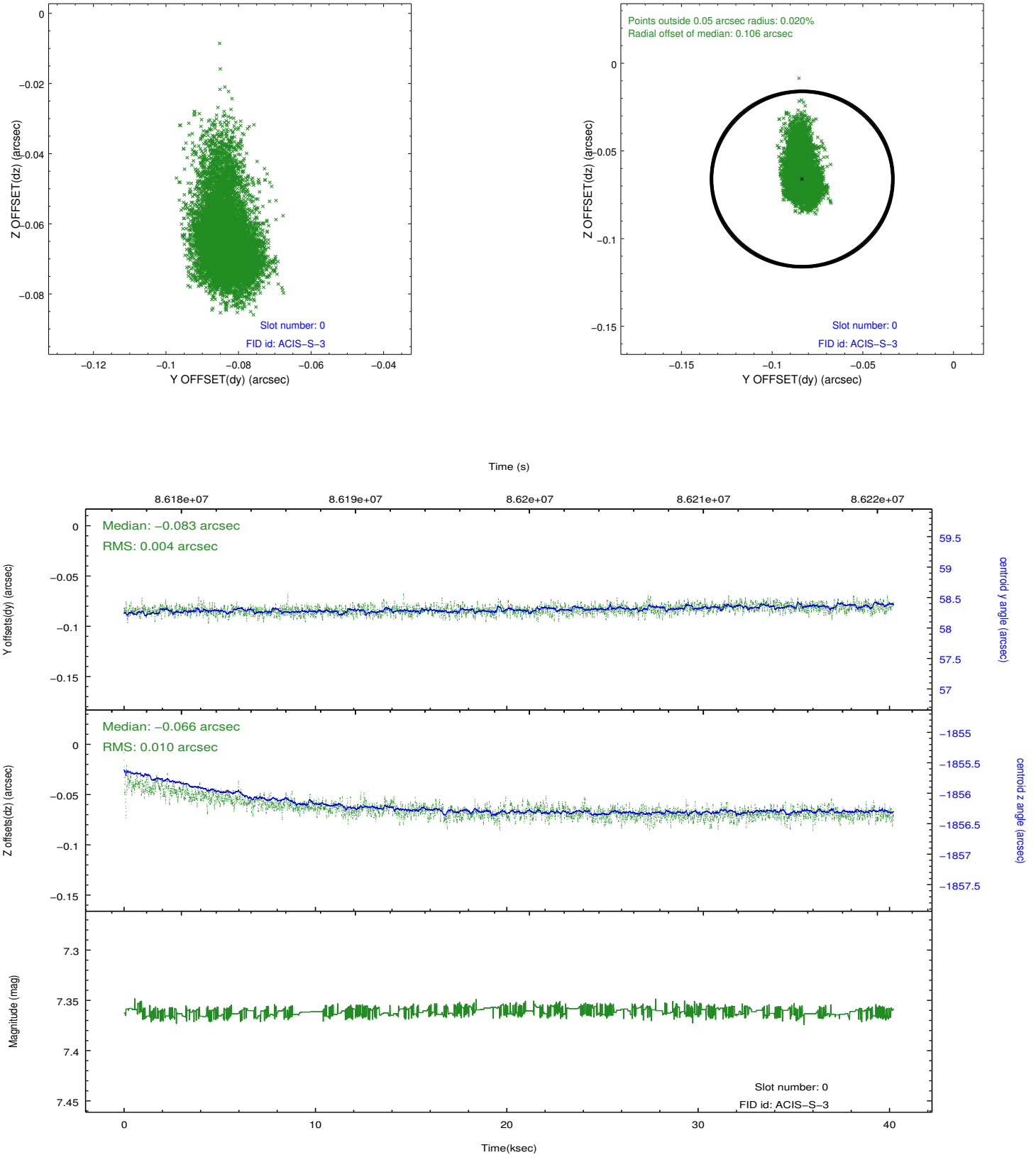


## 2.4.5 Slot 7

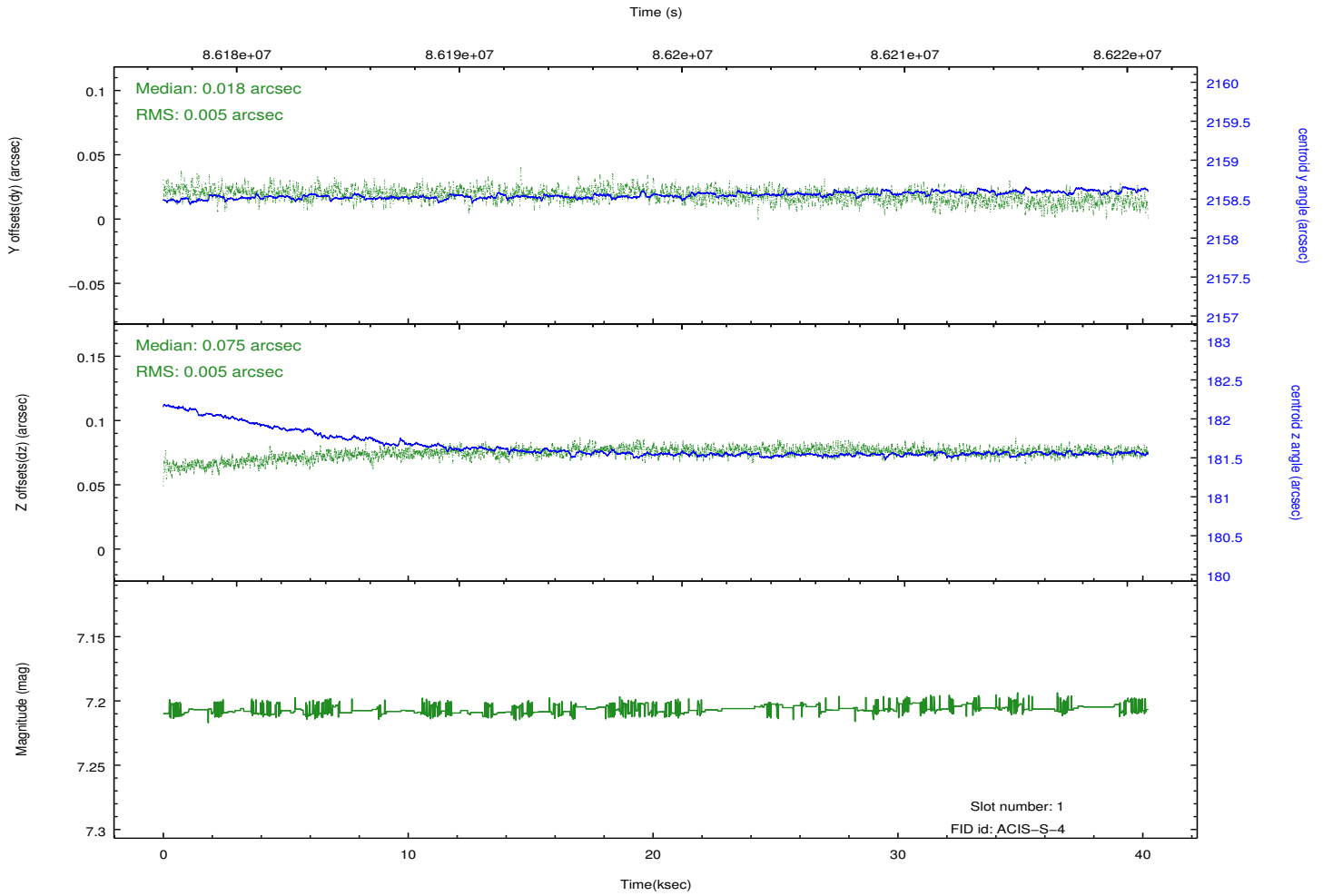
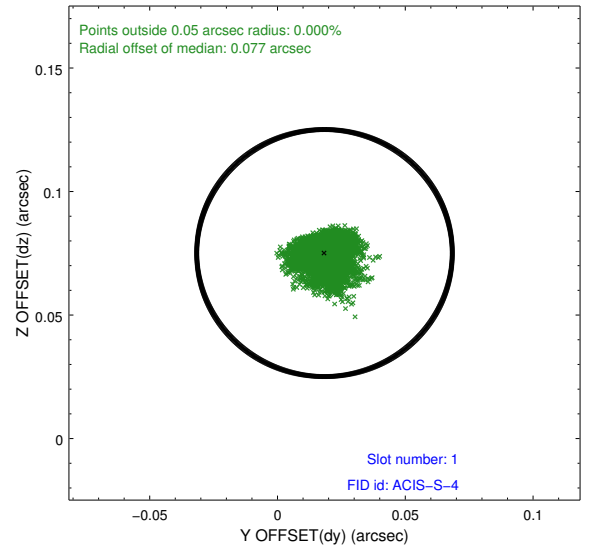
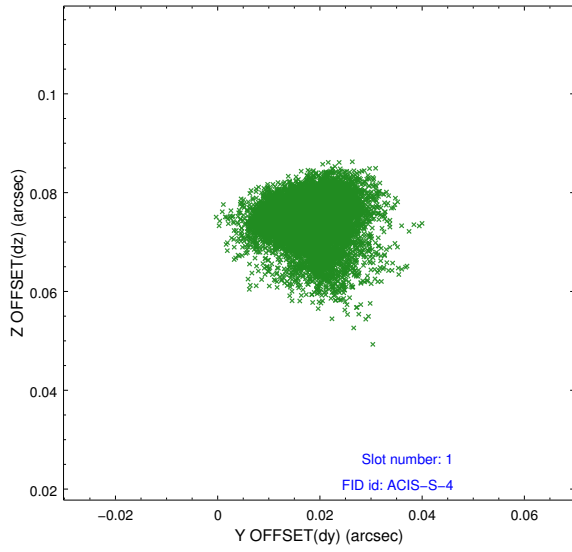


## 2.5 FID Slots

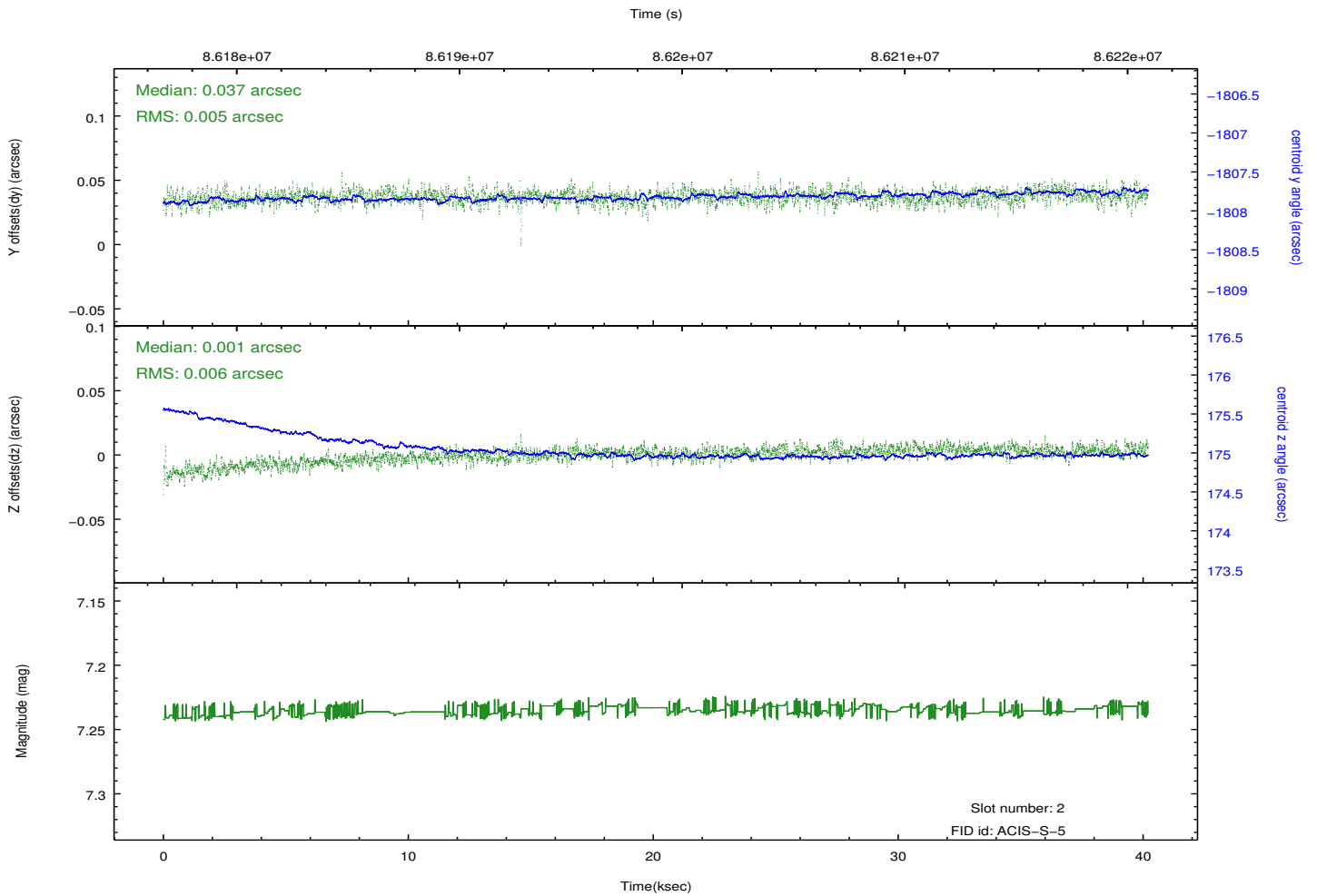
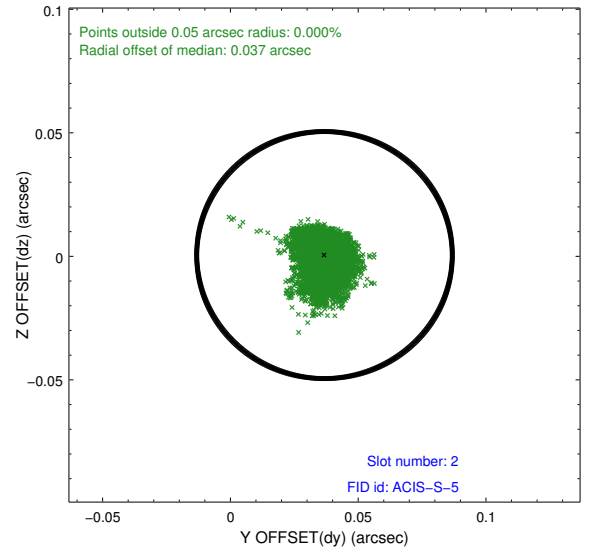
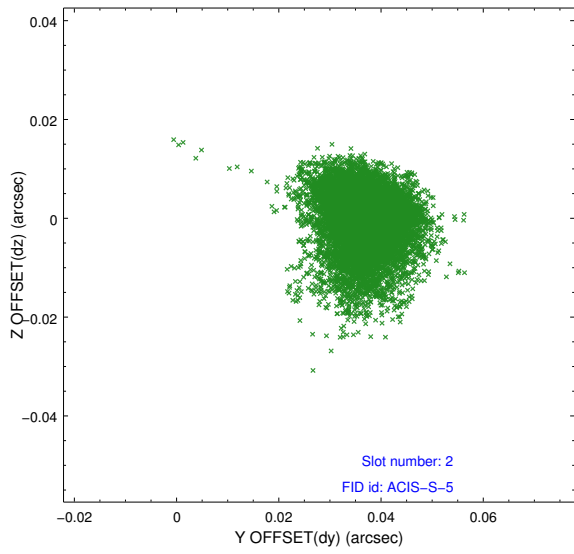
### 2.5.1 Slot 0



## 2.5.2 Slot 1



### 2.5.3 Slot 2



# A Summary

## A.1 Status

V&V Scientist	Beth Sundheim
V&V Date (YYYY-MM-DD)	2012.09.13
V&V Edition	1
V&V Disposition and Status	OK
V&V Charge Time	40.057

## A.2 Comments