

V&V Reference Report

L2 ASCDS Version : 8.4.5

Observation 10459 - L2 Version 2
Chandra X-Ray Center

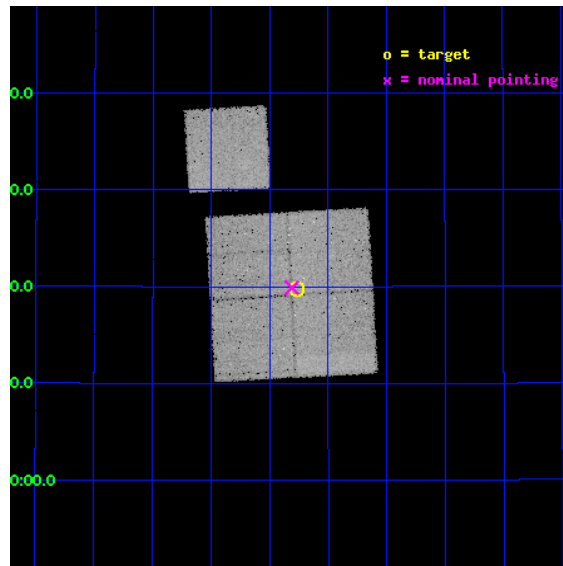
L2 Processing Date : Jun 28 2012

Contents

1	Front	2
2	OBI	3
2.1	OBI	3
2.1.1	Images	3
2.1.2	Bias	3
2.1.3	Parameters	4
2.1.4	Events	4
2.2	Compared Parameters	5
2.3	Aspect	6
2.4	Star Slots	9
2.4.1	Slot 3	9
2.4.2	Slot 4	10
2.4.3	Slot 5	11
2.4.4	Slot 6	12
2.4.5	Slot 7	13
2.5	FID Slots	14
2.5.1	Slot 0	14
2.5.2	Slot 1	15
2.5.3	Slot 2	16
A	Summary	17
A.1	Status	17
A.2	Comments	17

1 Front

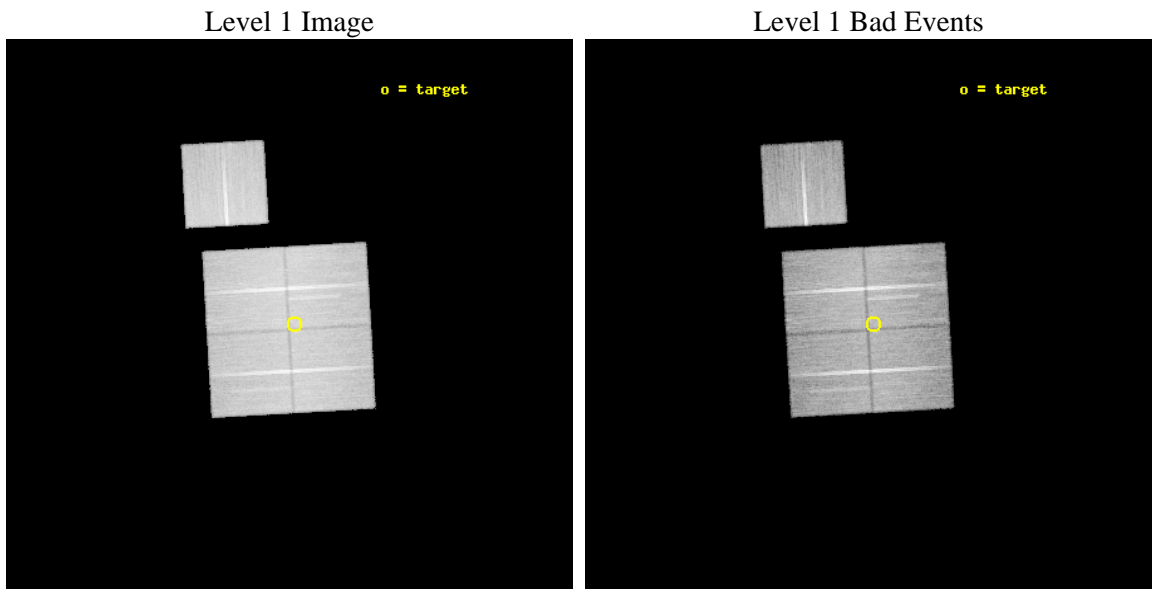
seq_num	800820	Sequence number
obs_id	10459	Observation id
title	The Role of AGN in Massive Galaxy Formation	Proposal title
observer	Dr. Spencer Stanford	Principal investigator
object	ISCS1025	Source name
dtcycle	0	
cycle	P	events from which exps? Prim/Second/Both
ra_targ	218.692917	Observer's specified target RA [deg]
dec_targ	35.329389	Observer's specified target Dec [deg]
ra_nom	218.7025018275	Nominal RA [deg]
dec_nom	35.331346457444	Nominal Dec [deg]
roll_nom	356.73670115981	Nominal Roll [deg]
revision	2	Processing version of data
ontime	32041.600246429	Sum of GTIs [s]
livetime	31622.953150527	Livetime [s]
ontime0	32025.895345271	Sum of GTIs [s]
ontime1	32038.459286094	Sum of GTIs [s]
ontime2	32035.318325698	Sum of GTIs [s]
ontime3	32041.600246429	Sum of GTIs [s]
ontime6	32035.318295777	Sum of GTIs [s]
l2events	119696	Number of level 2 events



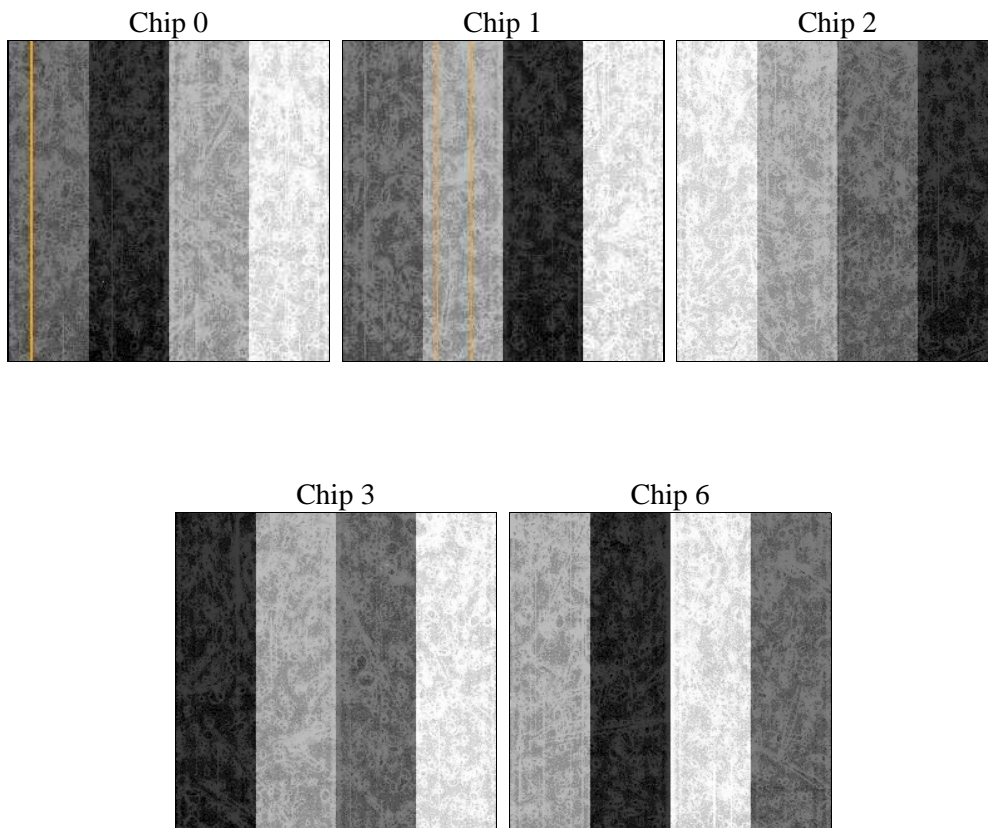
2 OBI

2.1 OBI

2.1.1 Images



2.1.2 Bias



2.1.3 Parameters

obi_num	1	Obi number	sched_exp_time	32000.000000	[s] Scheduled observation exposure time
ascdsver	8.4.5	Processing system revision	ontime	32041.600246429	Sum of GTIs [s]
caldbver	4.5.0	 	ontime0	32025.895345271	Sum of GTIs [s]
date	2012-06-28T13:42:35	Date and time of file creation	ontime1	32038.459286094	Sum of GTIs [s]
revision	2	Processing version of data	ontime2	32035.318325698	Sum of GTIs [s]
			ontime3	32041.600246429	Sum of GTIs [s]
			ontime6	32035.318295777	Sum of GTIs [s]
			l1events	1362342	Number of level 1 events

2.1.4 Events

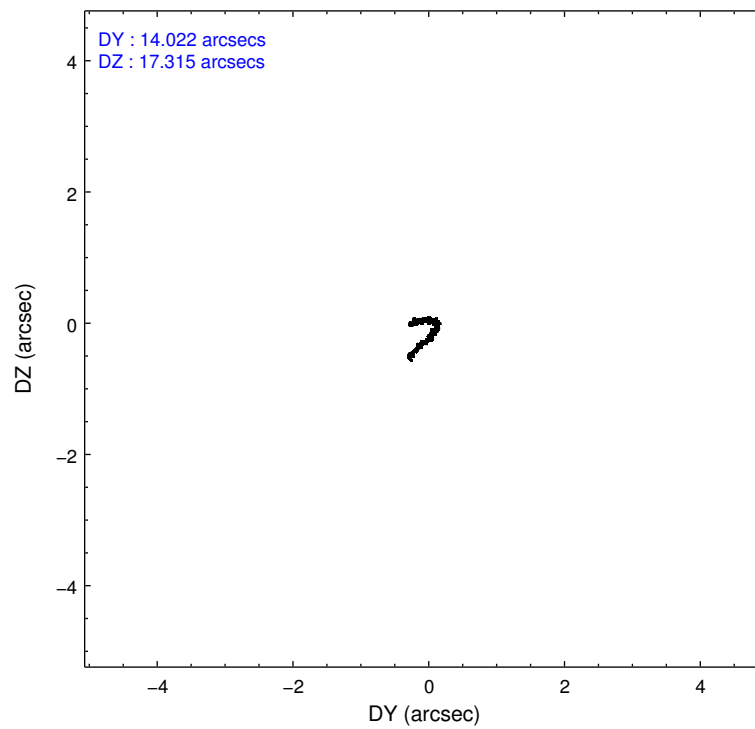
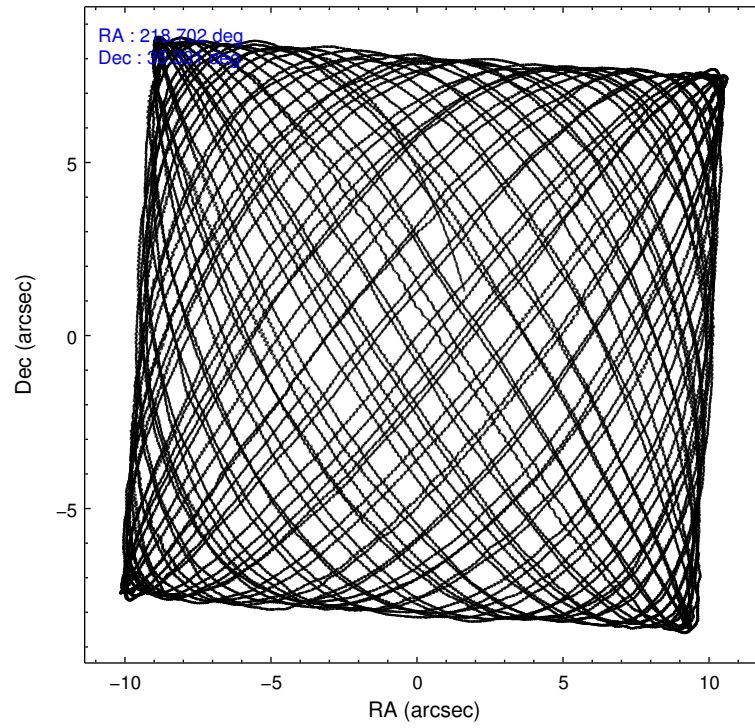
	ccd 0	ccd 1	ccd 2	ccd 3	ccd 6
level 1 events	255744	260605	289621	279861	276511
rejected events	227263	228580	261419	253020	247616
rejected %	88%	87%	90%	90%	89%

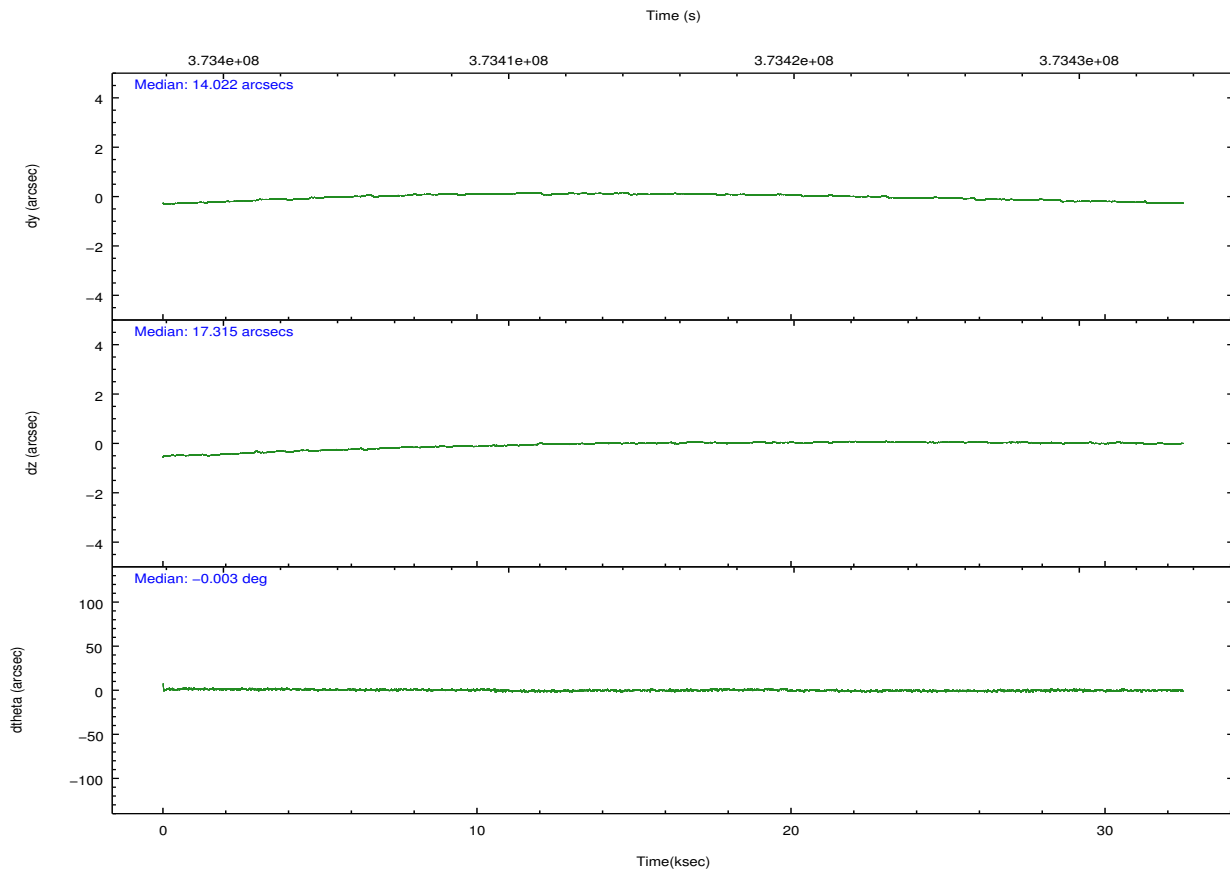
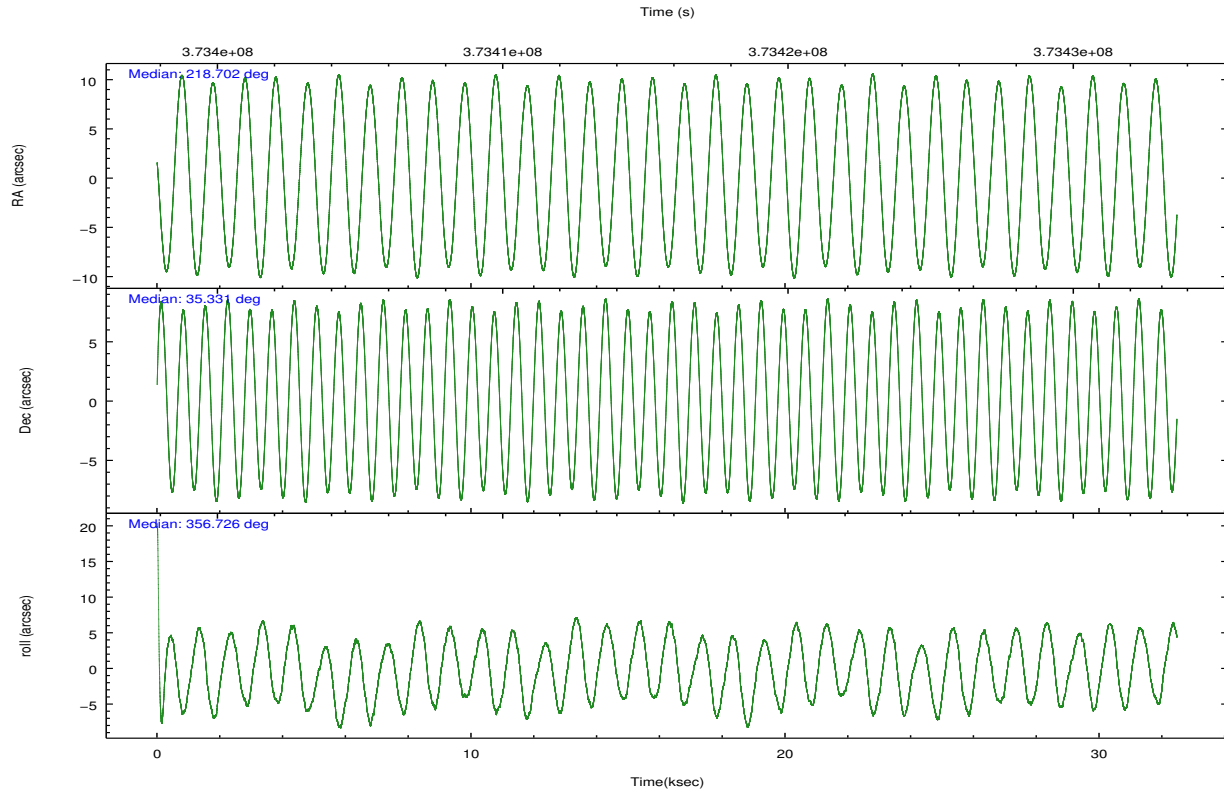
	ccd 0	ccd 1	ccd 2	ccd 3	ccd 6
grade 0 events	9746	11409	10158	9615	10180
	3%	4%	3%	3%	3%
grade 1 events	165	150	178	147	146
	0%	0%	0%	0%	0%
grade 2 events	7031	7437	6861	5950	6431
	2%	2%	2%	2%	2%
grade 3 events	3194	3290	2877	2872	3065
	1%	1%	0%	1%	1%
grade 4 events	2885	3362	3047	2942	3009
	1%	1%	1%	1%	1%
grade 5 events	10099	11171	9805	11851	11297
	3%	4%	3%	4%	4%
grade 6 events	5629	6534	5263	5466	6214
	2%	2%	1%	1%	2%
grade 7 events	216995	217252	251432	241018	236169
	84%	83%	86%	86%	85%

2.2 Compared Parameters

Parameter	Planned	Actual	Parameter	Planned	Actual
Instrument	ACIS	ACIS	Obspar format version number	7	7
Detector	ACIS-01236	ACIS-01236	Obspar file type	PREDICTED	ACTUAL
Grating	NONE	NONE	Obspar update status	NONE	UPDATED
Data mode	VFAINT	VFAINT	CCD I0 on	Y	Y
Observation mode	POINTING	POINTING	CCD I1 on	Y	Y
[deg] Pointing RA	218.672492	218.7025018275009	CCD I2 on	Y	Y
[deg] Pointing Dec	35.318883	35.33134645744421	CCD I3 on	Y	Y
[deg] Pointing Roll	356.545359	356.7367011598125	CCD S0 on	N	N
[mm] SIM focus pos	-0.782348	-0.7809083437167272	CCD S1 on	N	N
[mm] SIM defocus	0	0.001439871863259334	CCD S2 on	O1	Y
[mm] SIM translation stage pos	-233.592463	-233.5874344608287	CCD S3 on	N	N
[mm] SIM translation stage offset	0	-0.005018542100998502	CCD S4 on	N	N
[s] Observation start time (MET)	373400002.184000	373398929.18215	CCD S5 on	N	N
Observation start date	2009-10-31T18:12:16	2009-10-31T17:55:29	Number of optional ACIS chips dropped	0	0
[s] Observation end time (MET)	373432002.184000	373433031.95887	On-chip summing requested	N	N
Observation end date	2009-11-01T03:05:36	2009-11-01T03:23:51	Subarray requested	NONE	NONE
Read mode	TIMED	TIMED	Alternating exposures requested	N	N
			[s] Primary exposure time	0.000000	3.1

2.3 Aspect



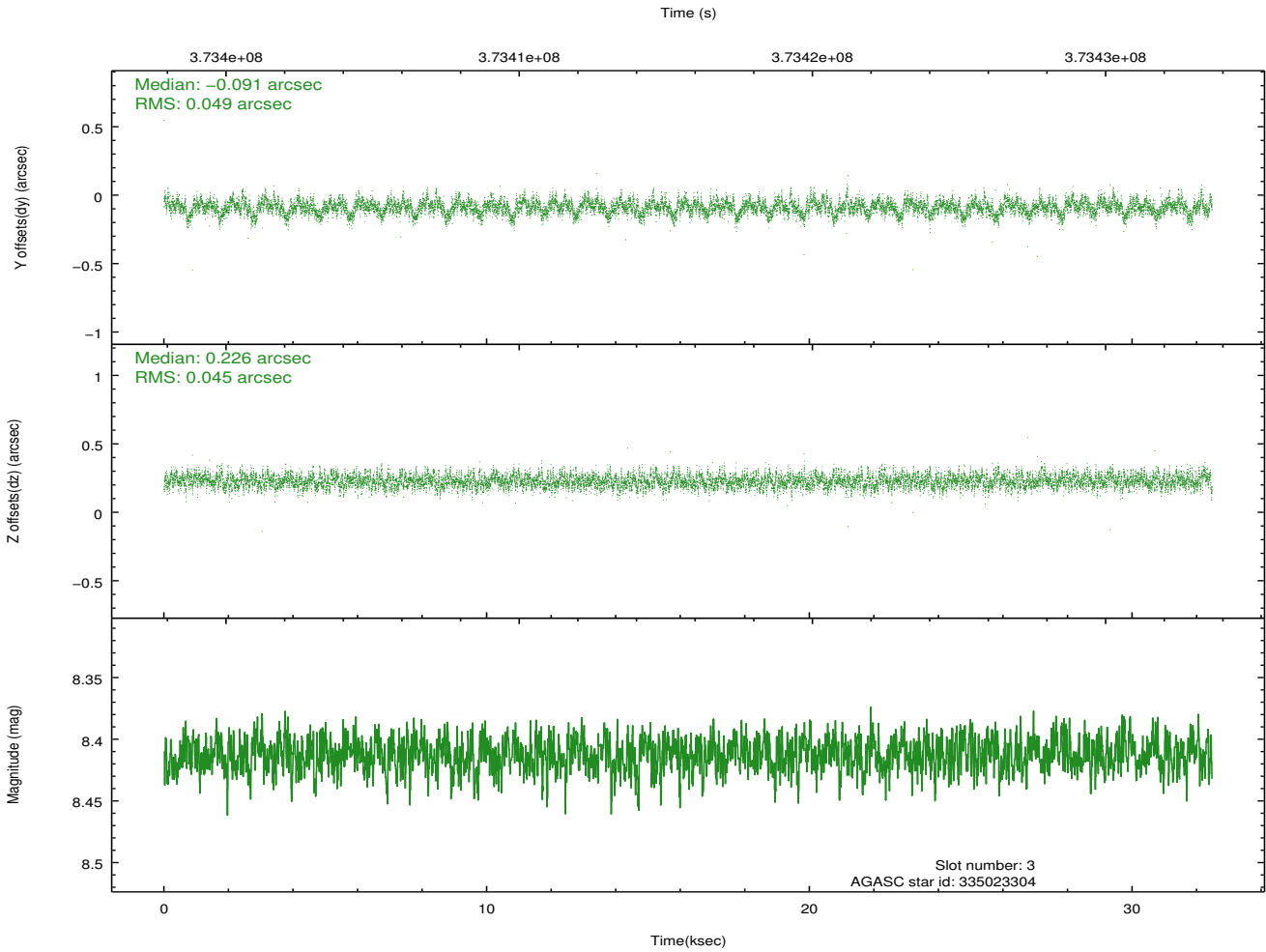
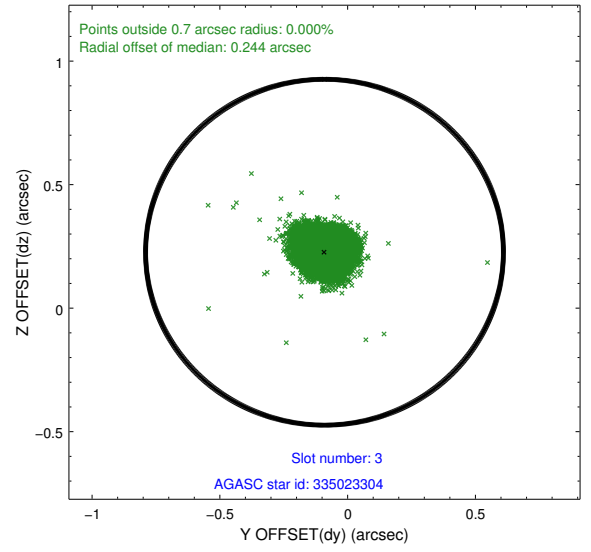
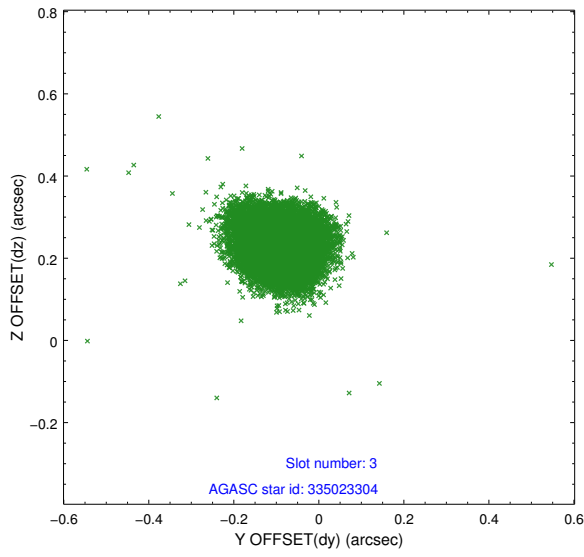


Slot Statistics

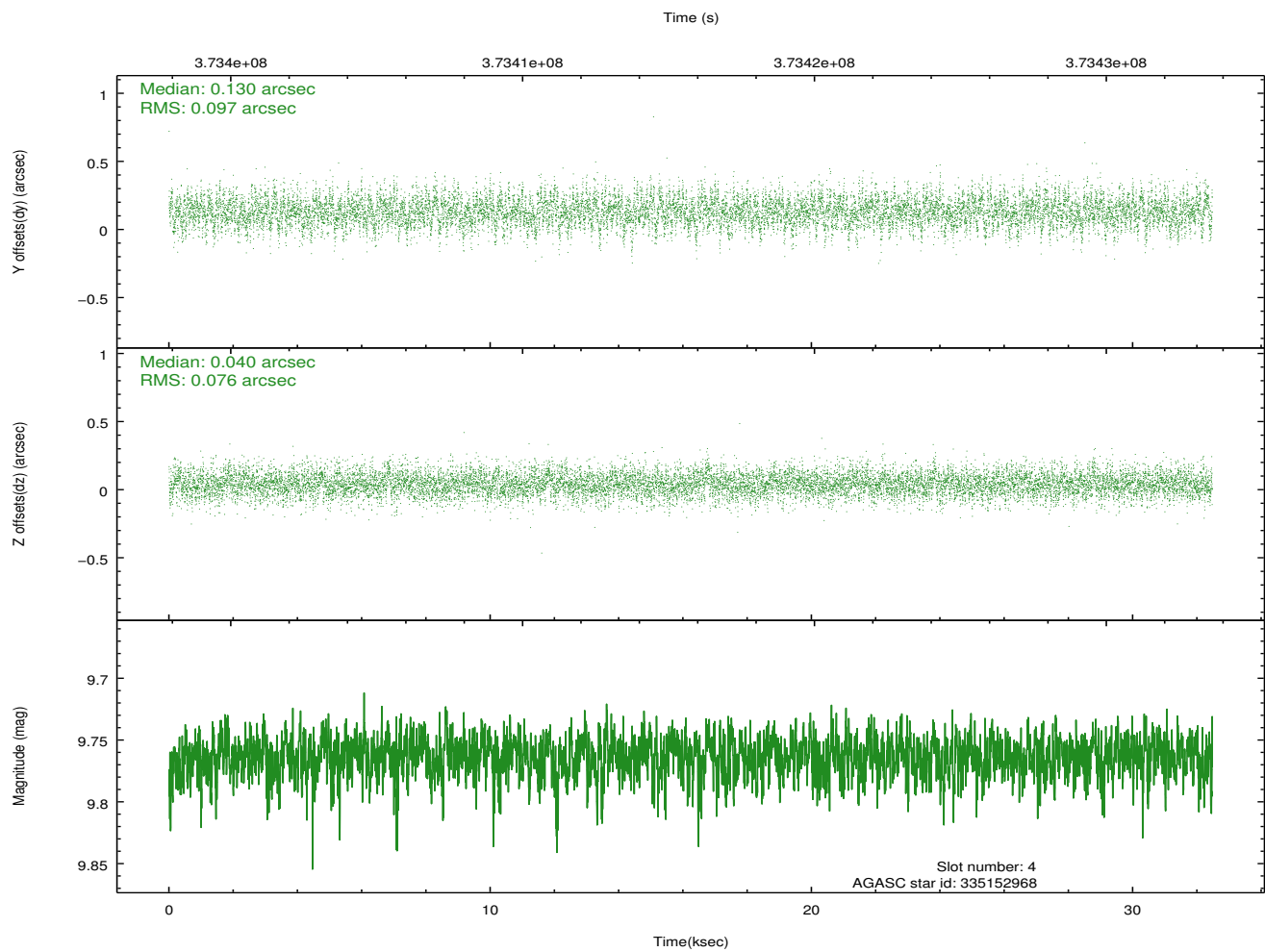
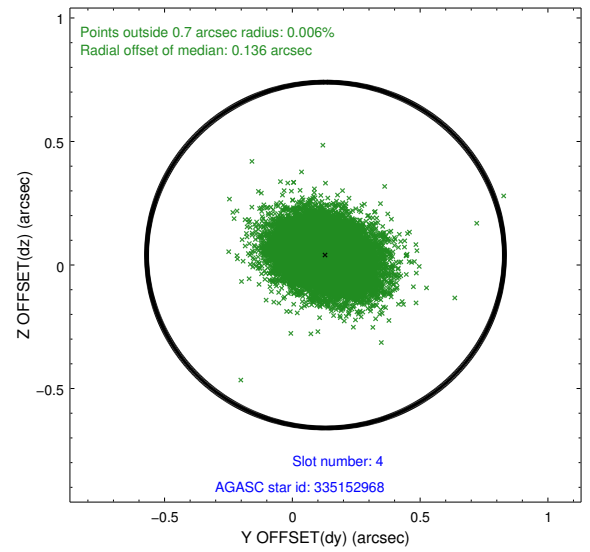
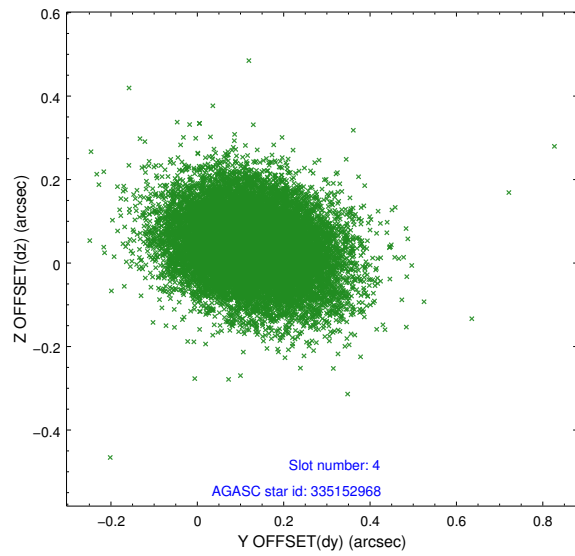
slot	status	id	mag	n_pts	med_dy	med_dz	dr1	dr2	ra	dec	mean_y	mean_z
0	FID	ACIS-I-2	6.90	7918	-0.090	-0.075	0.014	0.024	0.000000	0.000000	-768.76	-847.34
1	FID	ACIS-I-4	6.91	7920	0.169	0.075	0.008	0.014	0.000000	0.000000	2145.51	1058.97
2	FID	ACIS-I-5	6.97	7921	-0.180	0.069	0.012	0.020	0.000000	0.000000	-1822.62	1056.85
3	GUIDE	335023304	8.41	15833	-0.091	0.226	0.070	0.115	218.883608	34.686545	761.78	-2233.56
4	GUIDE	335152968	9.76	15820	0.130	0.040	0.130	0.216	219.446087	34.867883	2379.28	-1474.17
5	GUIDE	335414336	8.97	15821	-0.003	-0.070	0.081	0.131	218.979022	35.090910	951.42	-763.36
6	GUIDE	335421696	8.94	15830	0.167	0.019	0.076	0.126	218.045699	35.772449	-1925.31	1524.66
7	GUIDE	335549864	7.51	15837	-0.202	-0.211	0.064	0.104	219.286726	35.929745	1654.20	2308.85

2.4 Star Slots

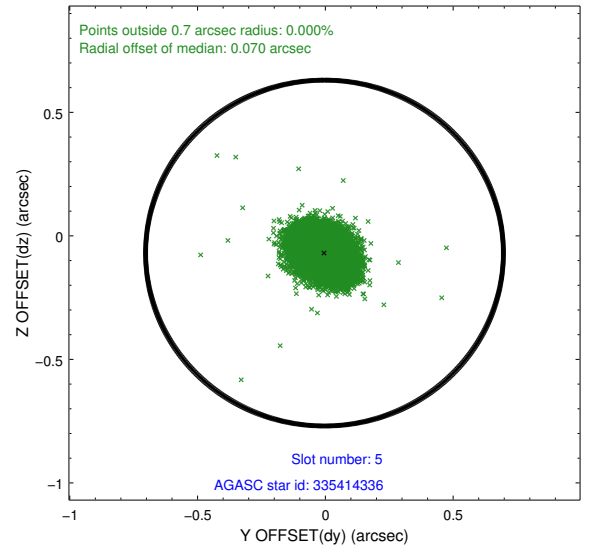
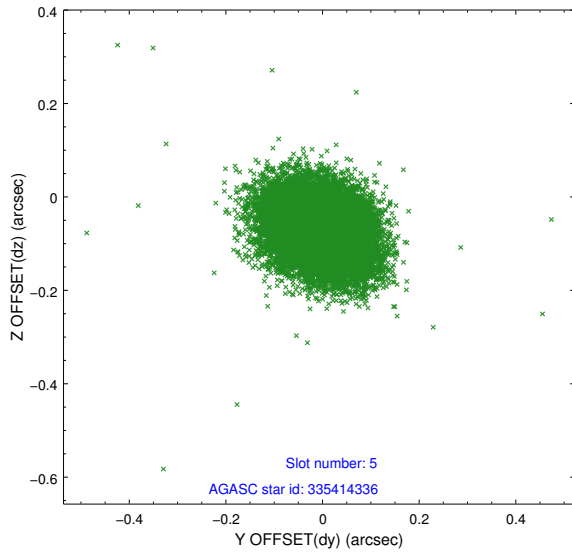
2.4.1 Slot 3



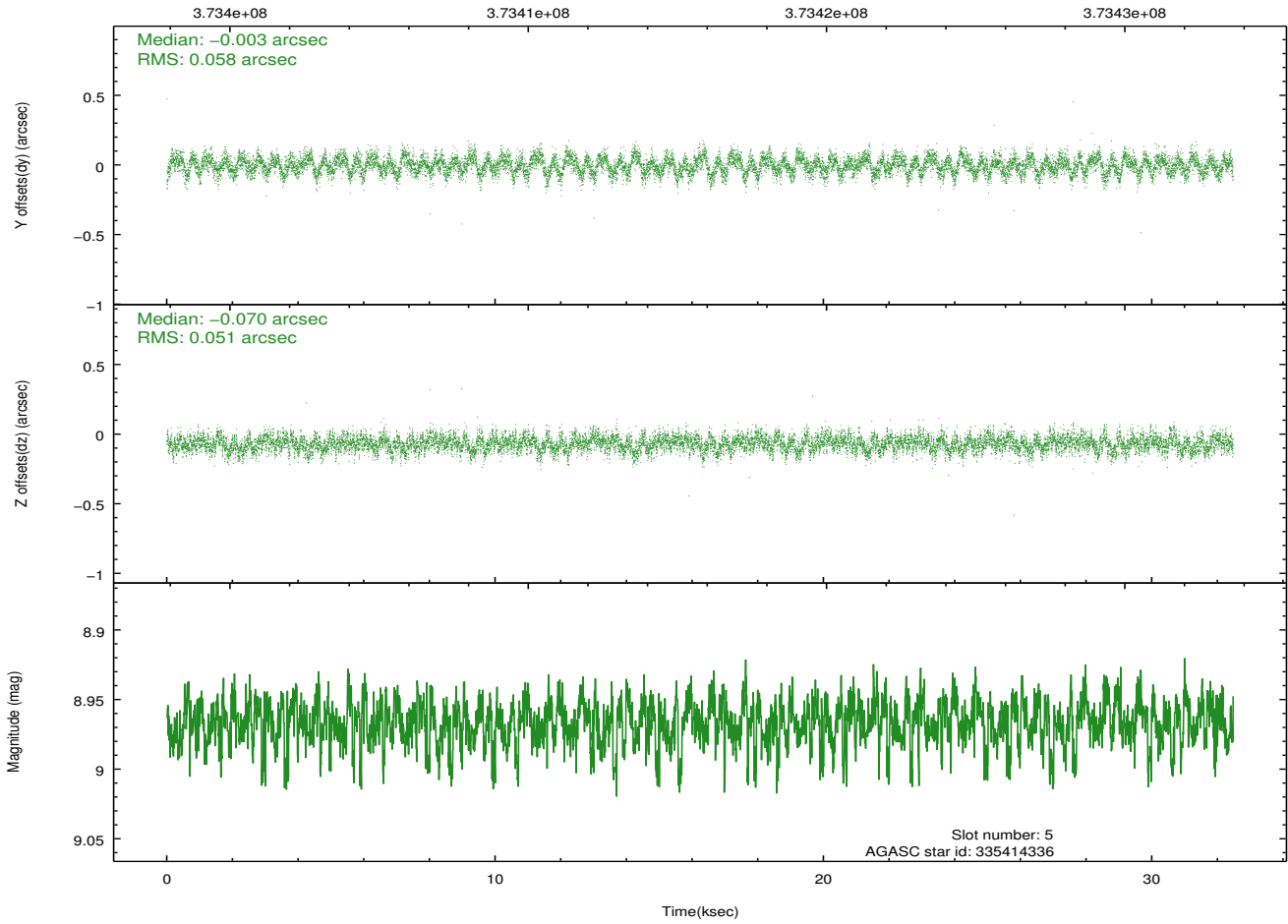
2.4.2 Slot 4



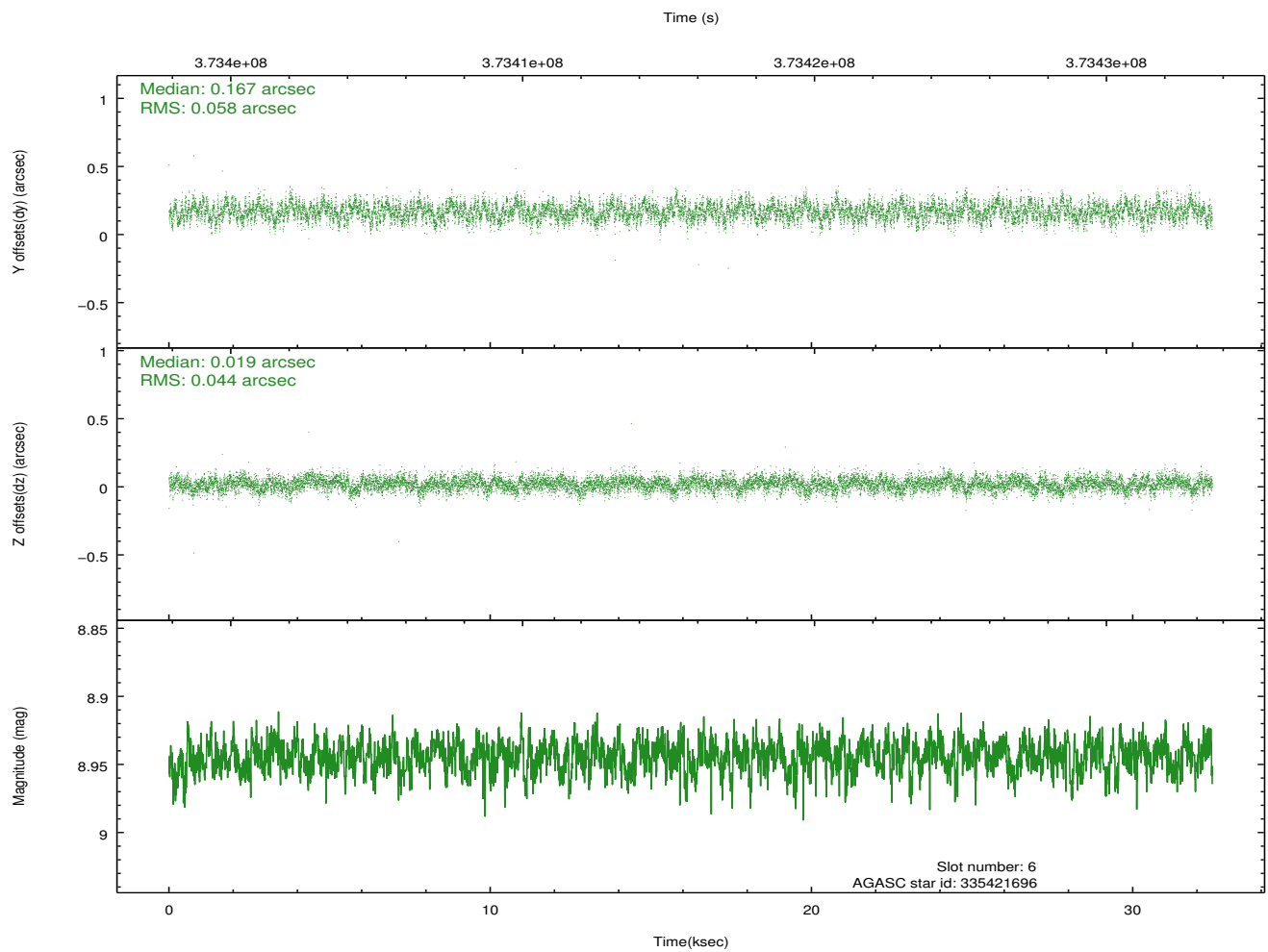
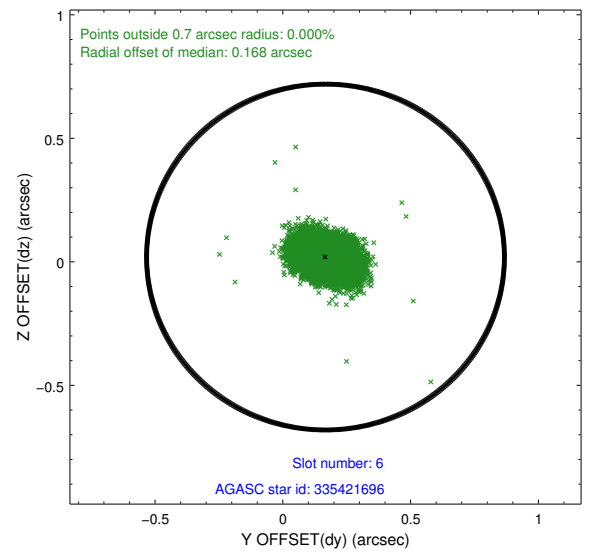
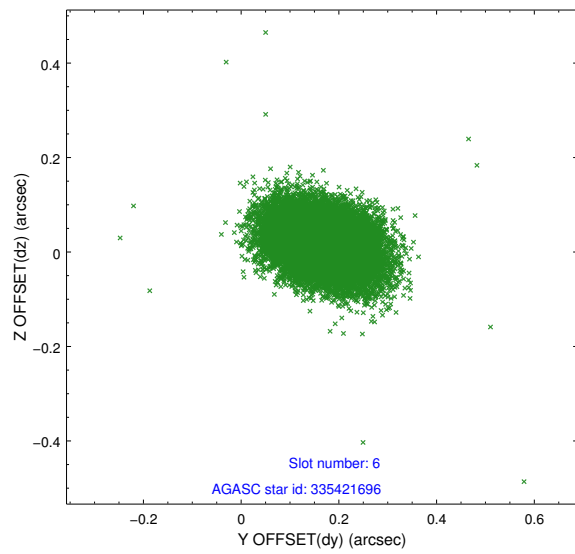
2.4.3 Slot 5



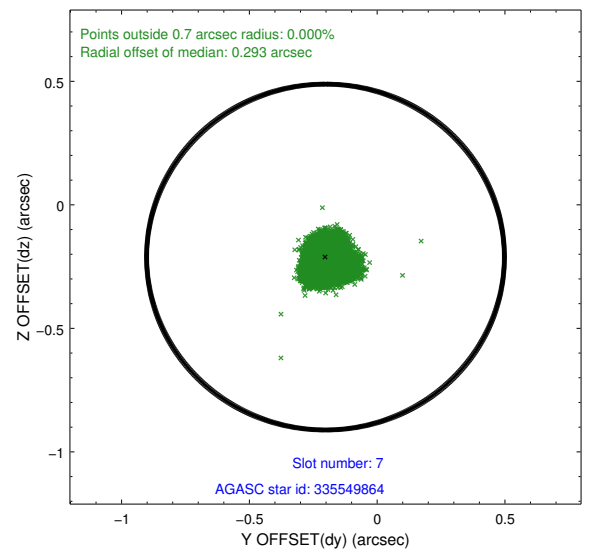
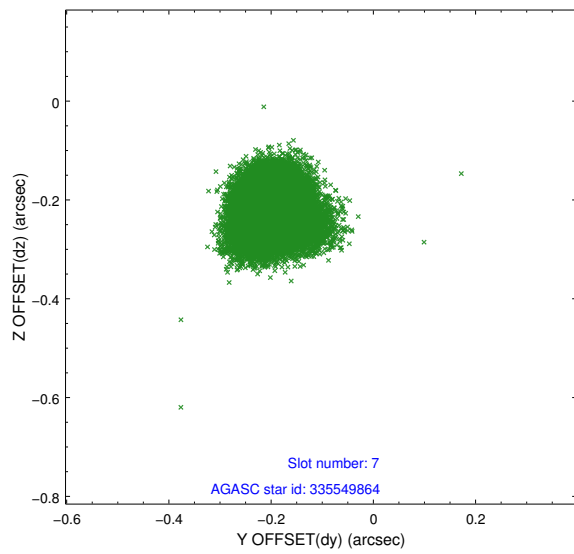
Time (s)



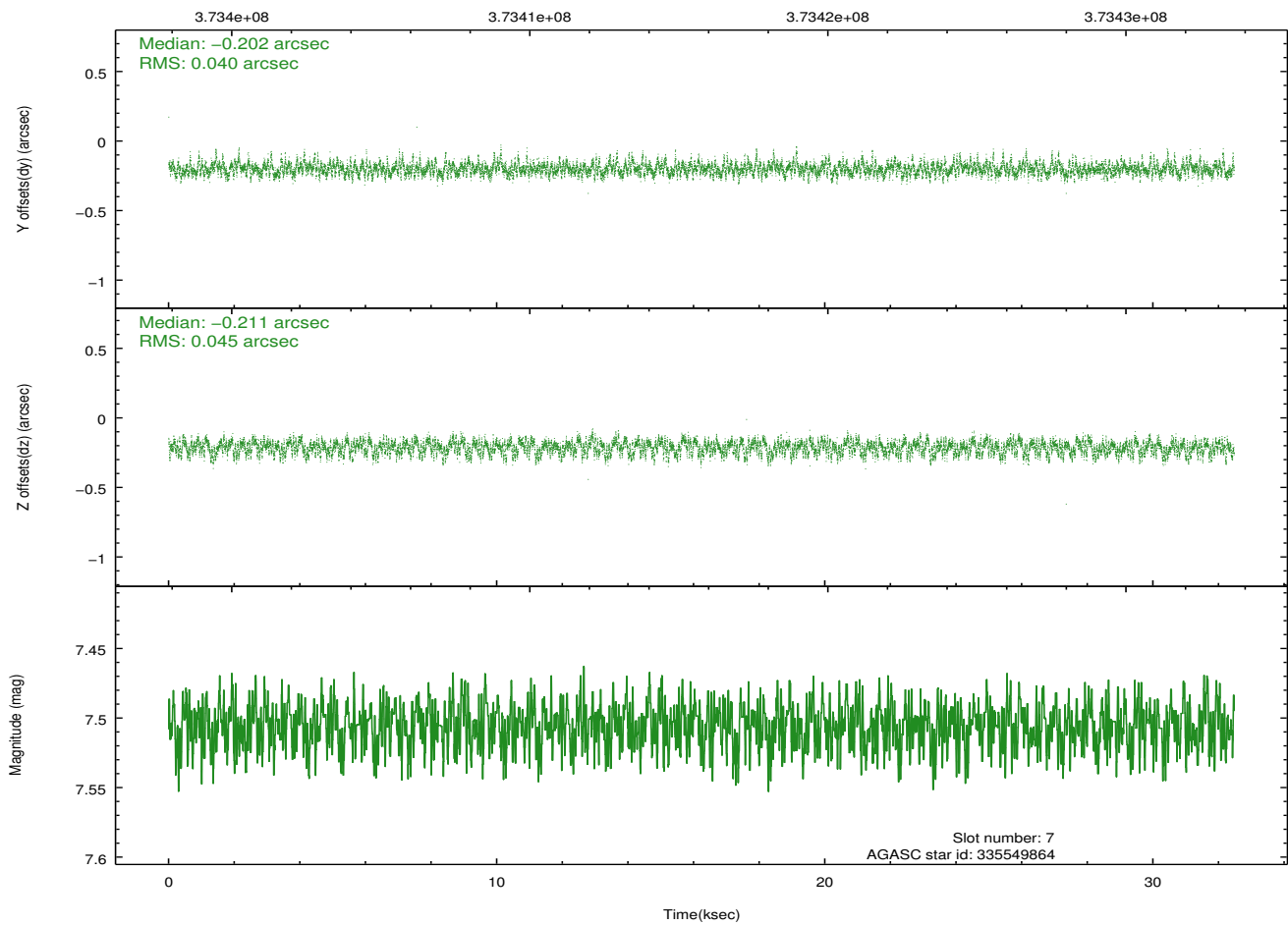
2.4.4 Slot 6



2.4.5 Slot 7

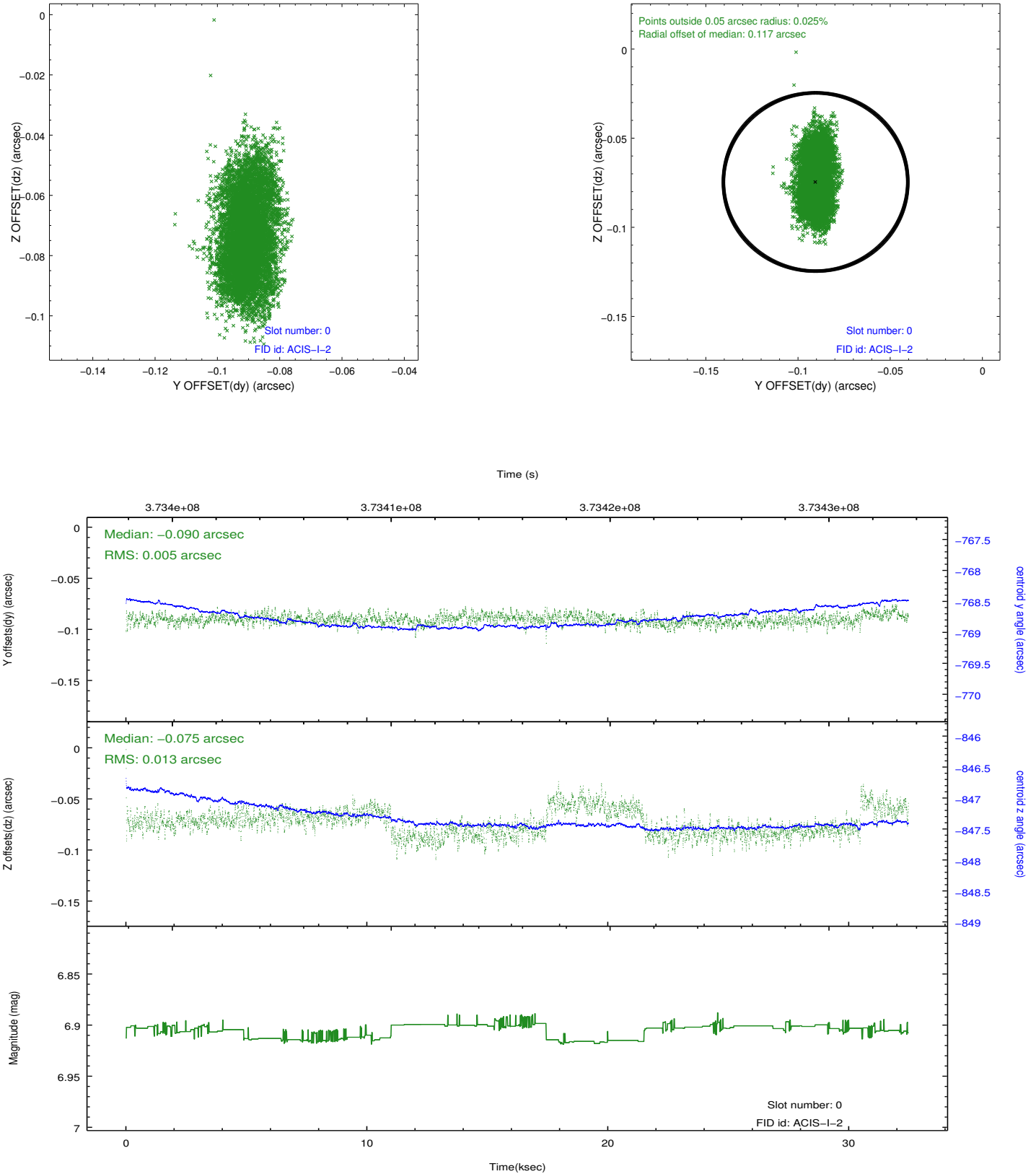


Time (s)

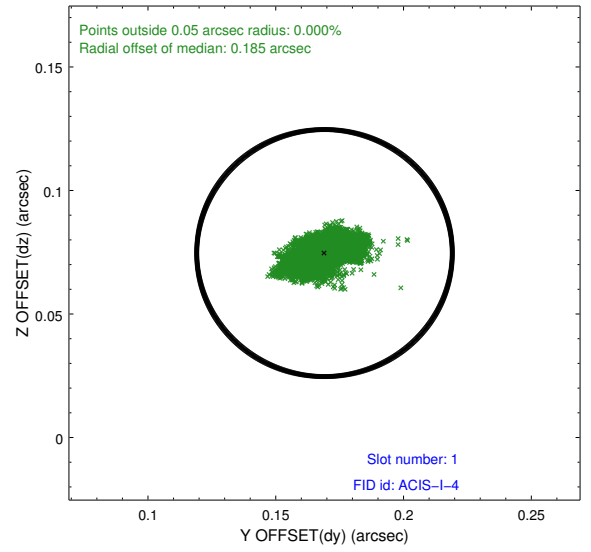
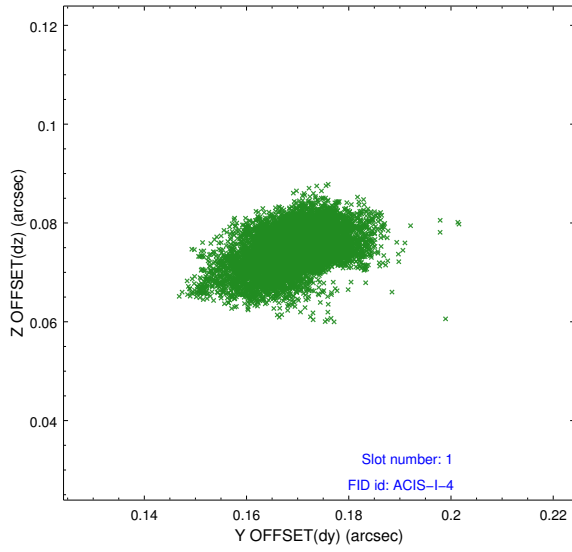


2.5 FID Slots

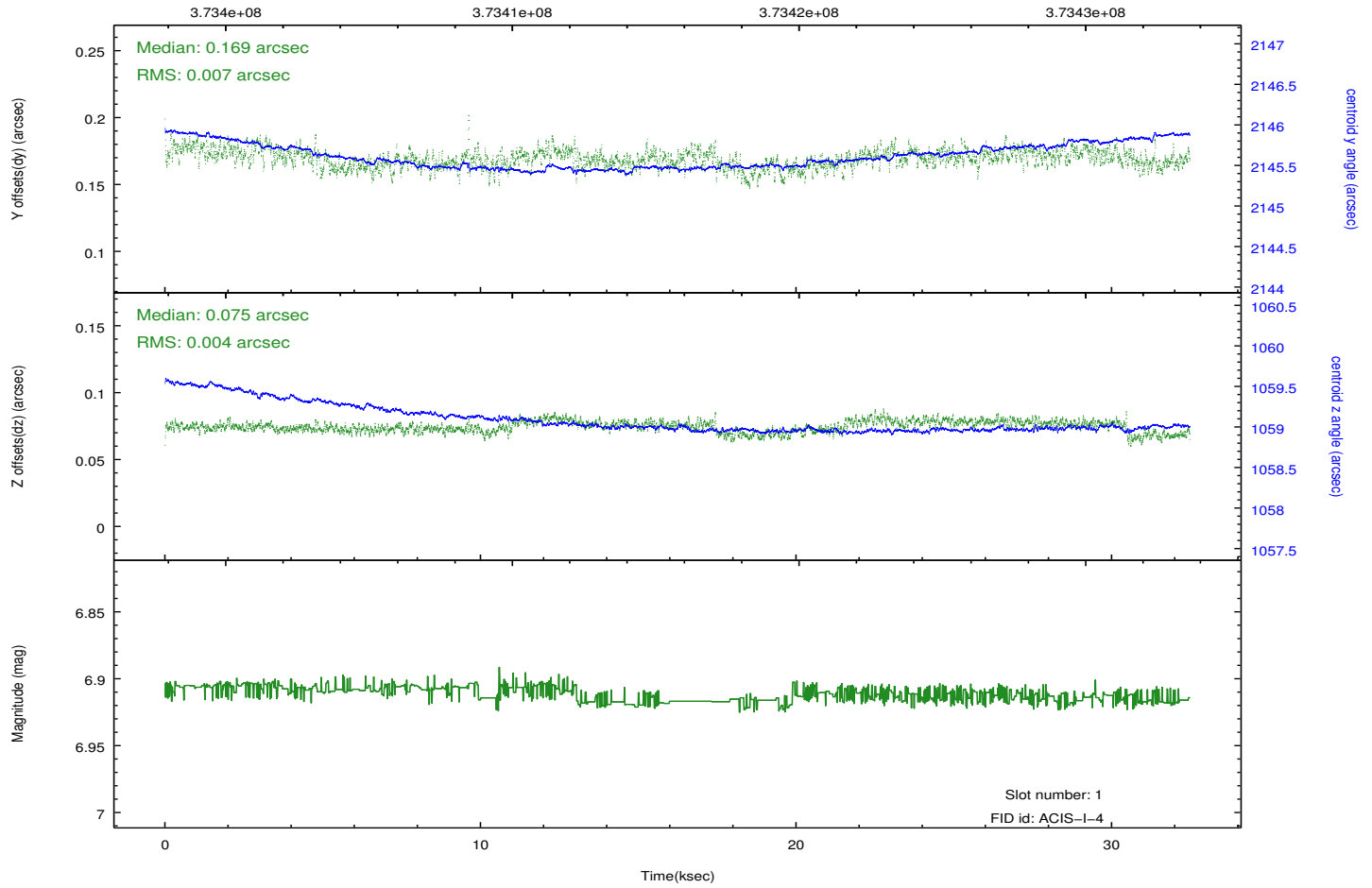
2.5.1 Slot 0



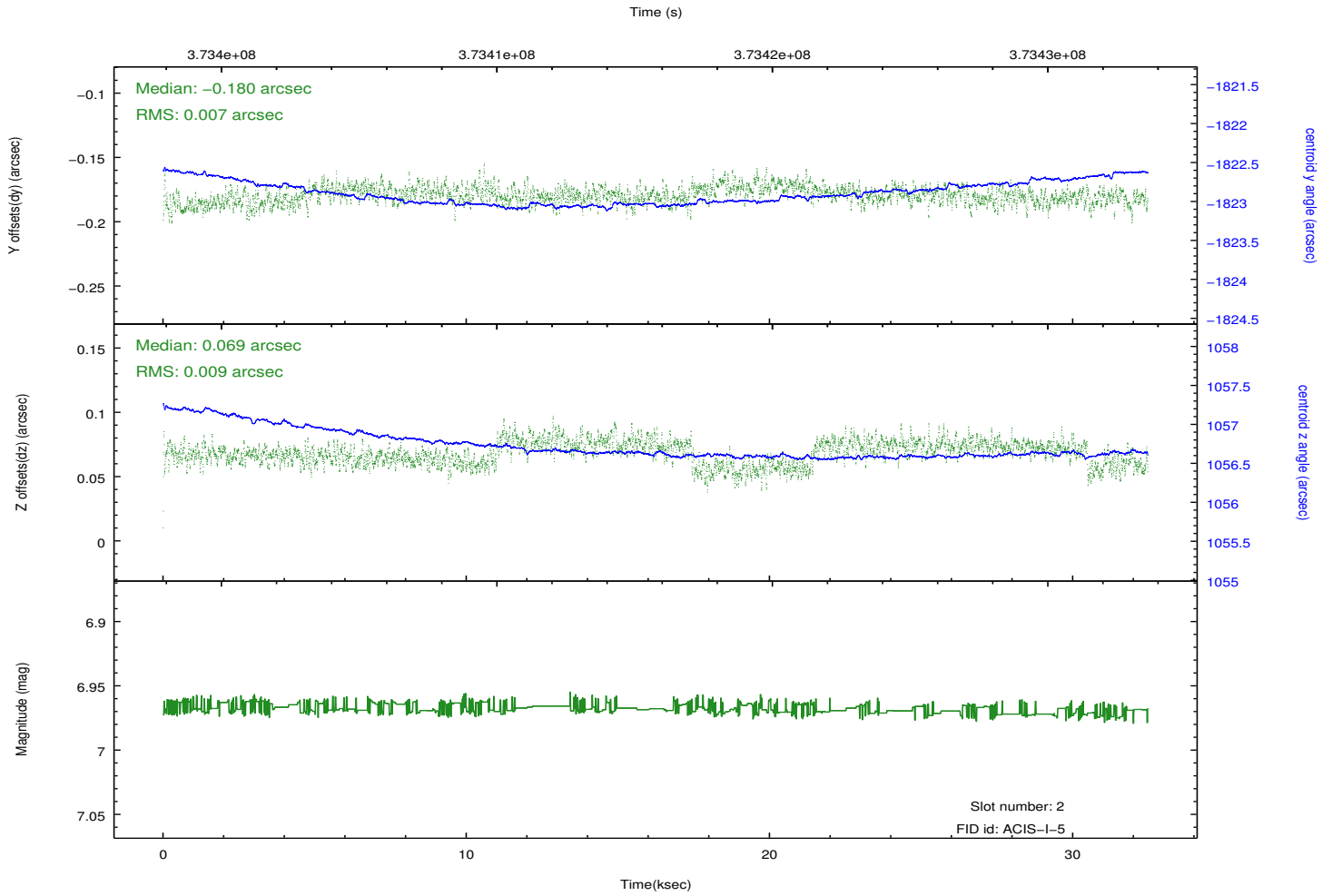
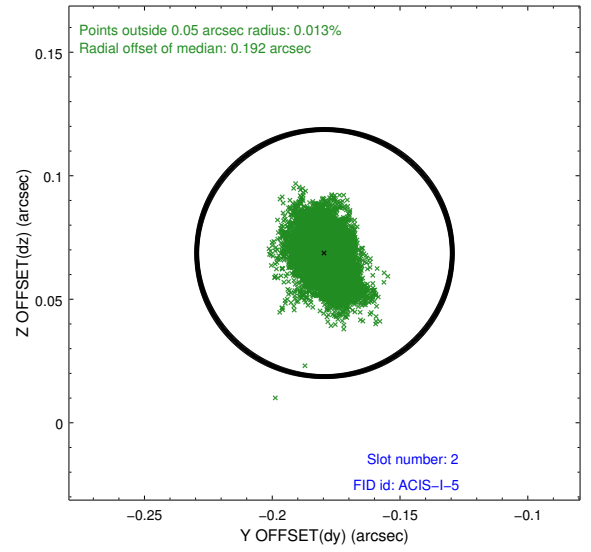
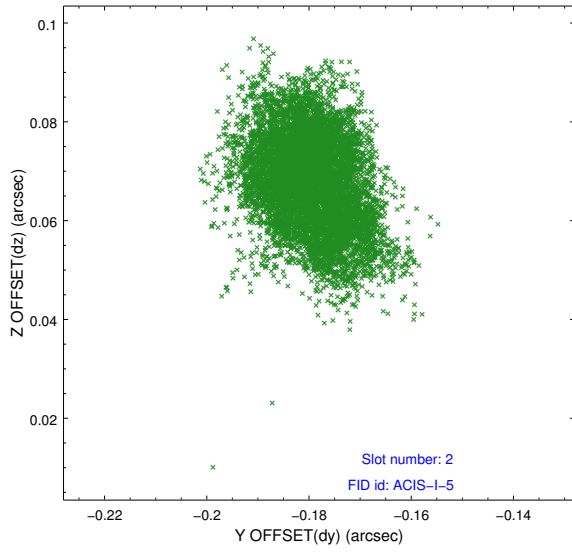
2.5.2 Slot 1



Time (s)



2.5.3 Slot 2



A Summary

A.1 Status

V&V Scientist	Jen Lauer
V&V Date (YYYY-MM-DD)	2012.07.05
V&V Edition	1
V&V Disposition and Status	OK
V&V Charge Time	32.041600246429

A.2 Comments