

V&V Reference Report

L2 ASCDS Version : 8.4.5

Observation 10929 - L2 Version 2
Chandra X-Ray Center

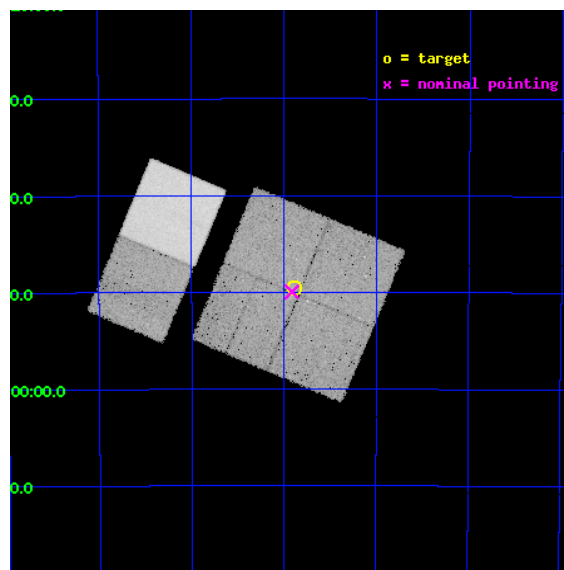
L2 Processing Date : Jun 9 2012

Contents

1	Front	2
2	OBI	3
2.1	OBI	3
2.1.1	Images	3
2.1.2	Bias	3
2.1.3	Parameters	4
2.1.4	Events	4
2.2	Compared Parameters	5
2.3	Aspect	6
2.4	Star Slots	9
2.4.1	Slot 3	9
2.4.2	Slot 4	10
2.4.3	Slot 5	11
2.4.4	Slot 6	12
2.4.5	Slot 7	13
2.5	FID Slots	14
2.5.1	Slot 0	14
2.5.2	Slot 1	15
2.5.3	Slot 2	16
A	Summary	17
A.1	Status	17
A.2	Comments	17

1 Front

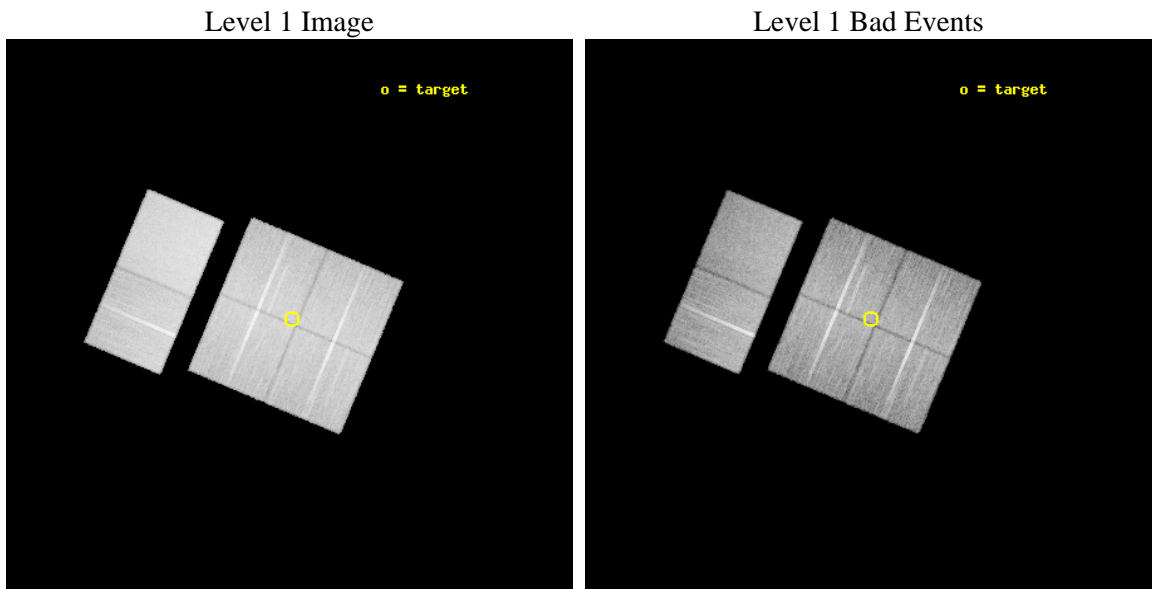
seq_num	501174	Sequence number
obs_id	10929	Observation id
title	Searching for the X-ray counterpart to J1622-49	Proposal title
observer	Dr. Nanda Rea	Principal investigator
object	PSR J1622-49	Source name
dtycle	0	
cycle	P	events from which exps? Prim/Second/Both
ra_targ	245.720417	Observer's specified target RA [deg]
dec_targ	-49.826417	Observer's specified target Dec [deg]
ra_nom	245.72853221581	Nominal RA [deg]
dec_nom	-49.832593988722	Nominal Dec [deg]
roll_nom	292.81334824117	Nominal Roll [deg]
revision	2	Processing version of data
ontime	20134.399925053	Sum of GTIs [s]
livetime	19879.446029722	Livetime [s]
ontime0	20134.399925053	Sum of GTIs [s]
ontime1	20134.399925053	Sum of GTIs [s]
ontime2	20131.15895474	Sum of GTIs [s]
ontime3	20134.399925053	Sum of GTIs [s]
ontime6	20134.399925053	Sum of GTIs [s]
ontime7	20134.399925053	Sum of GTIs [s]
l2events	238591	Number of level 2 events



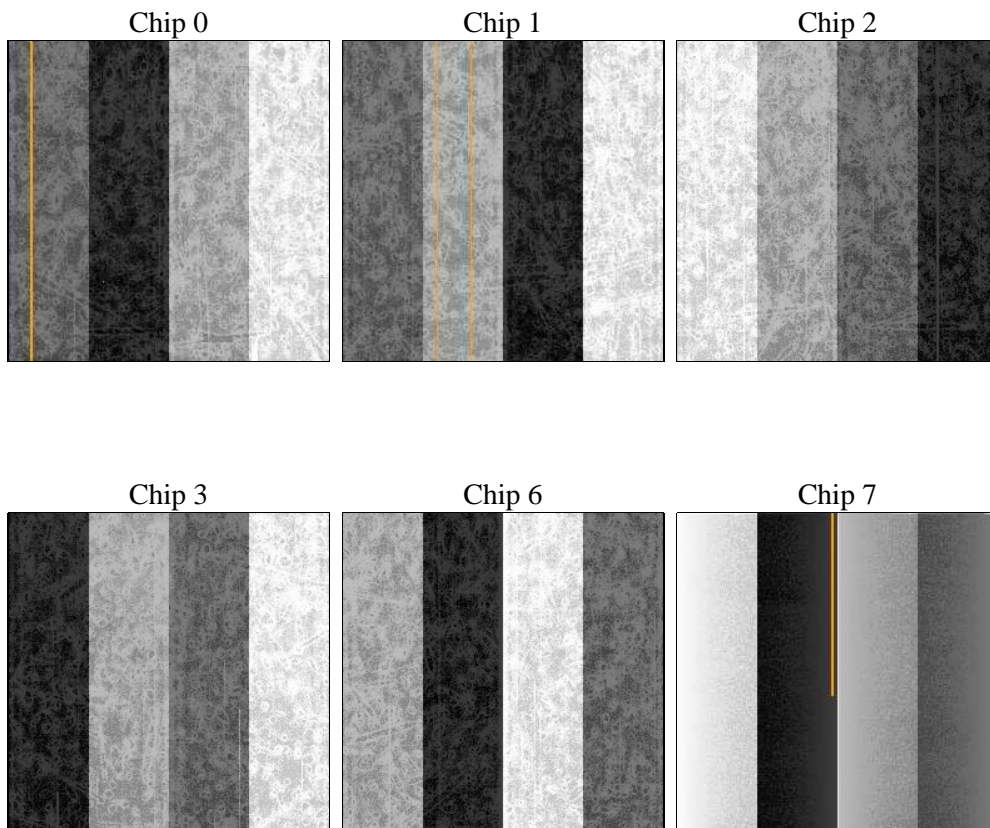
2 OBI

2.1 OBI

2.1.1 Images



2.1.2 Bias



2.1.3 Parameters

obi_num	0	Obi number	sched_exp_time	20000.000000	[s] Scheduled observation exposure time
ascdsver	8.4.5	Processing system revision	ontime	20134.399925053	Sum of GTIs [s]
caldbver	4.4.10	 	ontime0	20134.399925053	Sum of GTIs [s]
date	2012-06-09T23:42:23	Date and time of file creation	ontime1	20134.399925053	Sum of GTIs [s]
revision	2	Processing version of data	ontime2	20131.15895474	Sum of GTIs [s]
			ontime3	20134.399925053	Sum of GTIs [s]
			ontime6	20134.399925053	Sum of GTIs [s]
			ontime7	20134.399925053	Sum of GTIs [s]
			l1events	1363282	Number of level 1 events

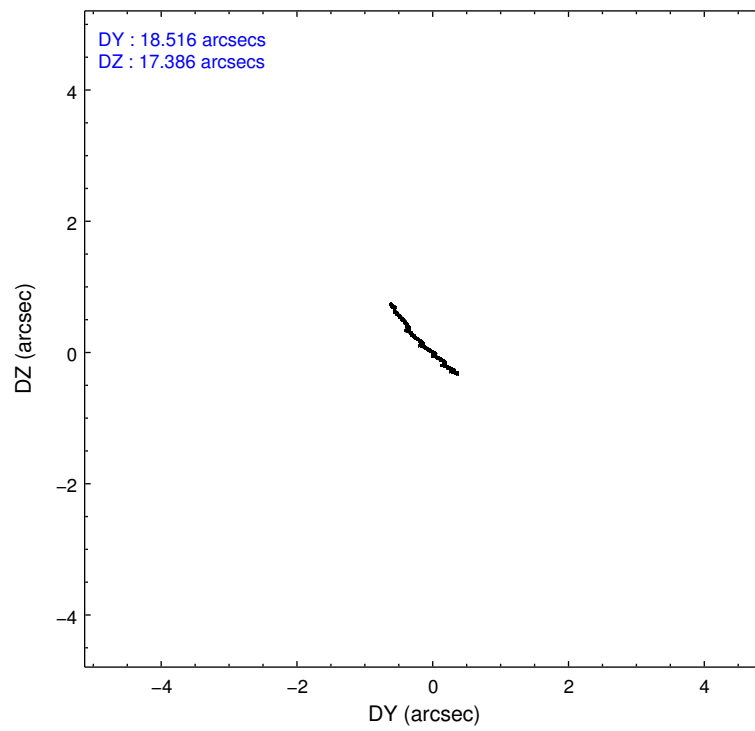
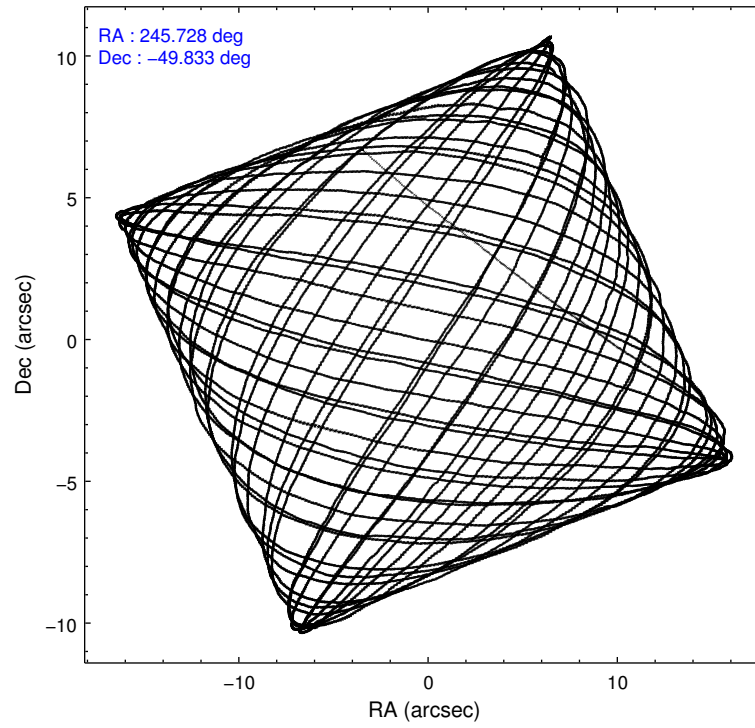
2.1.4 Events

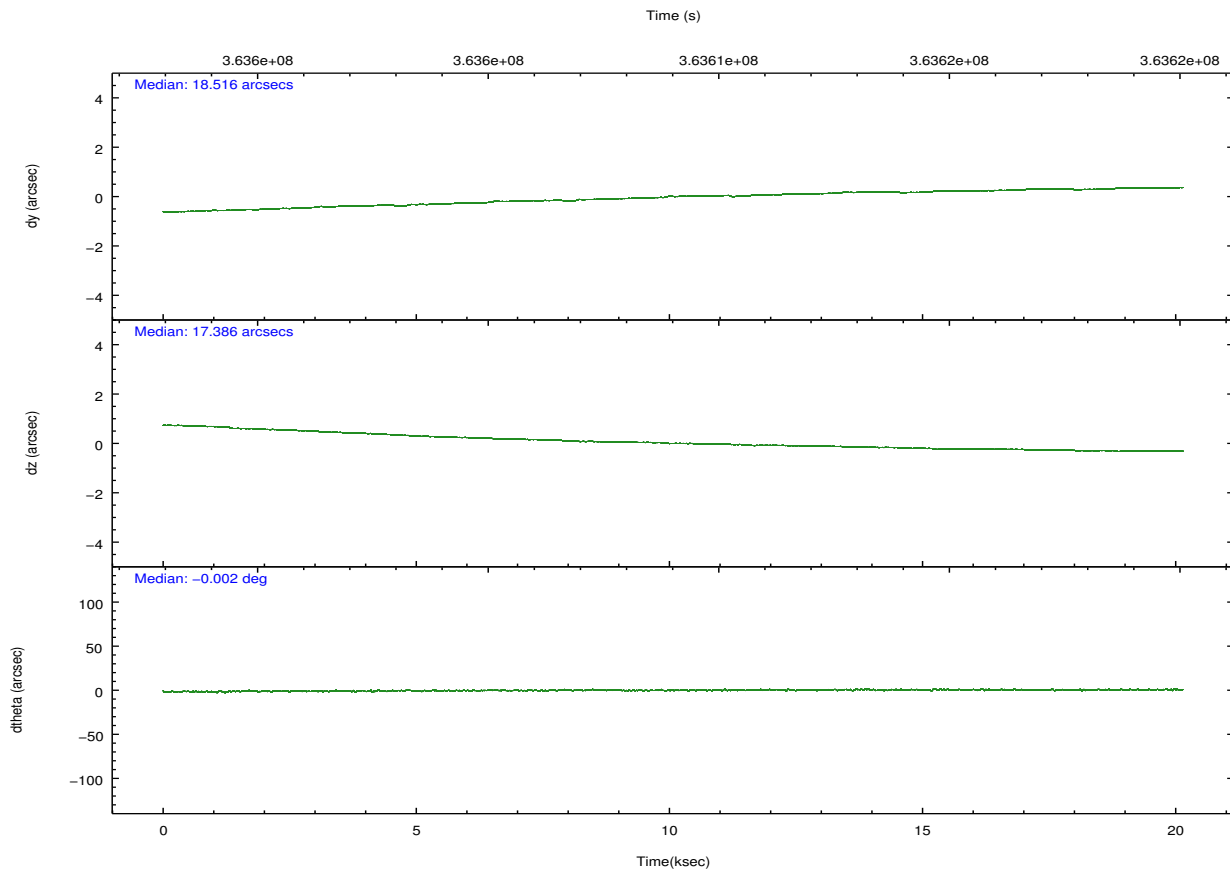
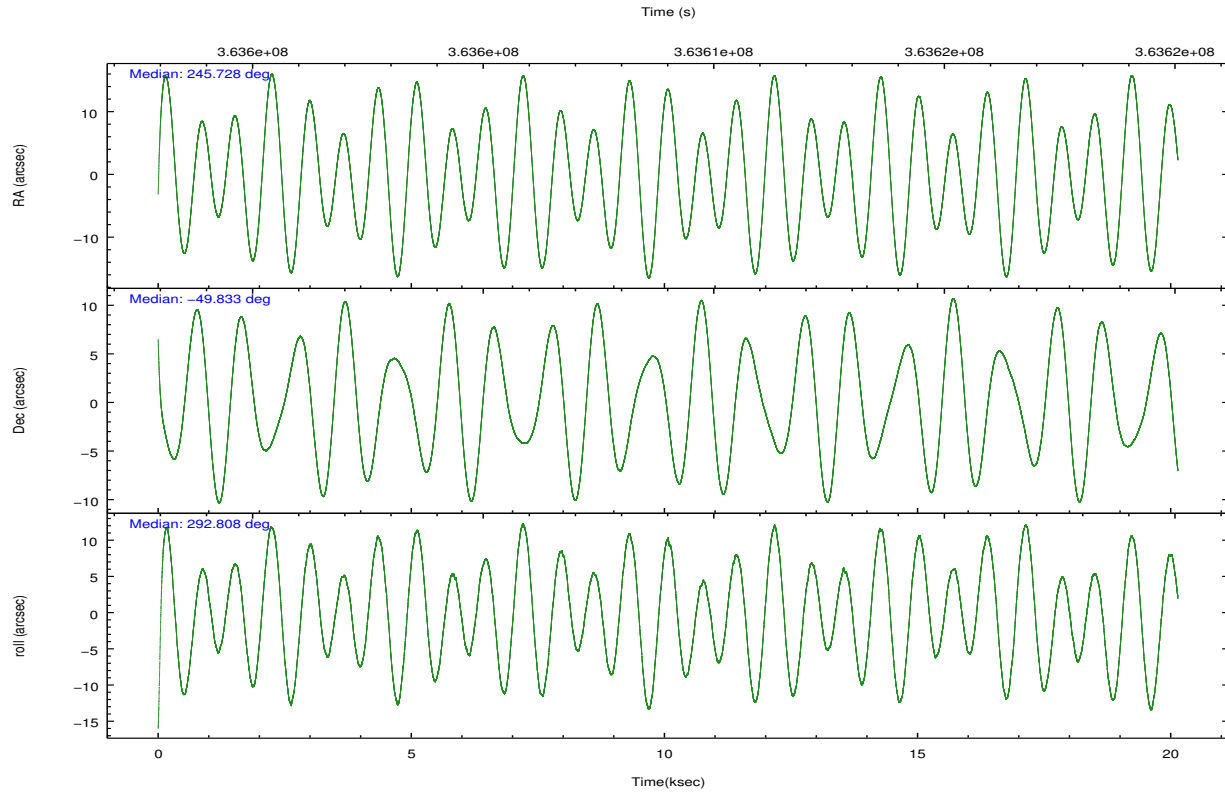
	ccd 0	ccd 1	ccd 2	ccd 3	ccd 6	ccd 7		ccd 0	ccd 1	ccd 2	ccd 3	ccd 6	ccd 7
level 1 events	200092	205270	213307	214088	224364	306161	grade 0 events	12552	11636	11722	12347	10901	10802
rejected events	172472	176561	187421	187432	197631	182591		6%	5%	5%	5%	4%	3%
rejected %	86%	86%	87%	87%	88%	59%	grade 1 events	158	125	154	178	146	356
								0%	0%	0%	0%	0%	0%
							grade 2 events	6399	7038	5730	5472	6109	26339
								3%	3%	2%	2%	2%	8%
							grade 3 events	2487	2722	2375	2568	2533	10740
								1%	1%	1%	1%	1%	3%
							grade 4 events	2400	2604	2420	2462	2511	10724
								1%	1%	1%	1%	1%	3%
							grade 5 events	9382	9783	9027	10624	10904	28866
								4%	4%	4%	4%	4%	9%
							grade 6 events	4718	5759	4539	4775	5621	69402
								2%	2%	2%	2%	2%	22%
							grade 7 events	161996	165603	177340	175662	185639	148932
								80%	80%	83%	82%	82%	48%

2.2 Compared Parameters

Parameter	Planned	Actual	Parameter	Planned	Actual
Instrument	ACIS	ACIS	Obspar format version number	7	7
Detector	ACIS-012367	ACIS-012367	Obspar file type	PREDICTED	ACTUAL
Grating	NONE	NONE	Obspar update status	NONE	UPDATED
Data mode	FAINT	FAINT	Number of optional ACIS chips dropped	0	0
Observation mode	POINTING	POINTING	On-chip summing requested	N	N
[deg] Pointing RA	245.694432	245.7285322158064	Subarray requested	NONE	NONE
[deg] Pointing Dec	-49.816064	-49.83259398872151	Alternating exposures requested	N	N
[deg] Pointing Roll	292.578617	292.8133482411664	[s] Primary exposure time	0.000000	3.2
[mm] SIM focus pos	-0.782348	-0.7809083437167272			
[mm] SIM defocus	0	0.001439871863259334			
[mm] SIM translation stage pos	-233.592463	-233.5874344608287			
[mm] SIM translation stage offset	0	-0.005018542100998502			
[s] Observation start time (MET)	363599086.184000	363597681.89039			
Observation start date	2009-07-10T07:43:40	2009-07-10T07:21:21			
[s] Observation end time (MET)	363619086.184000	363619780.379			
Observation end date	2009-07-10T13:17:00	2009-07-10T13:29:40			
Read mode	TIMED	TIMED			

2.3 Aspect



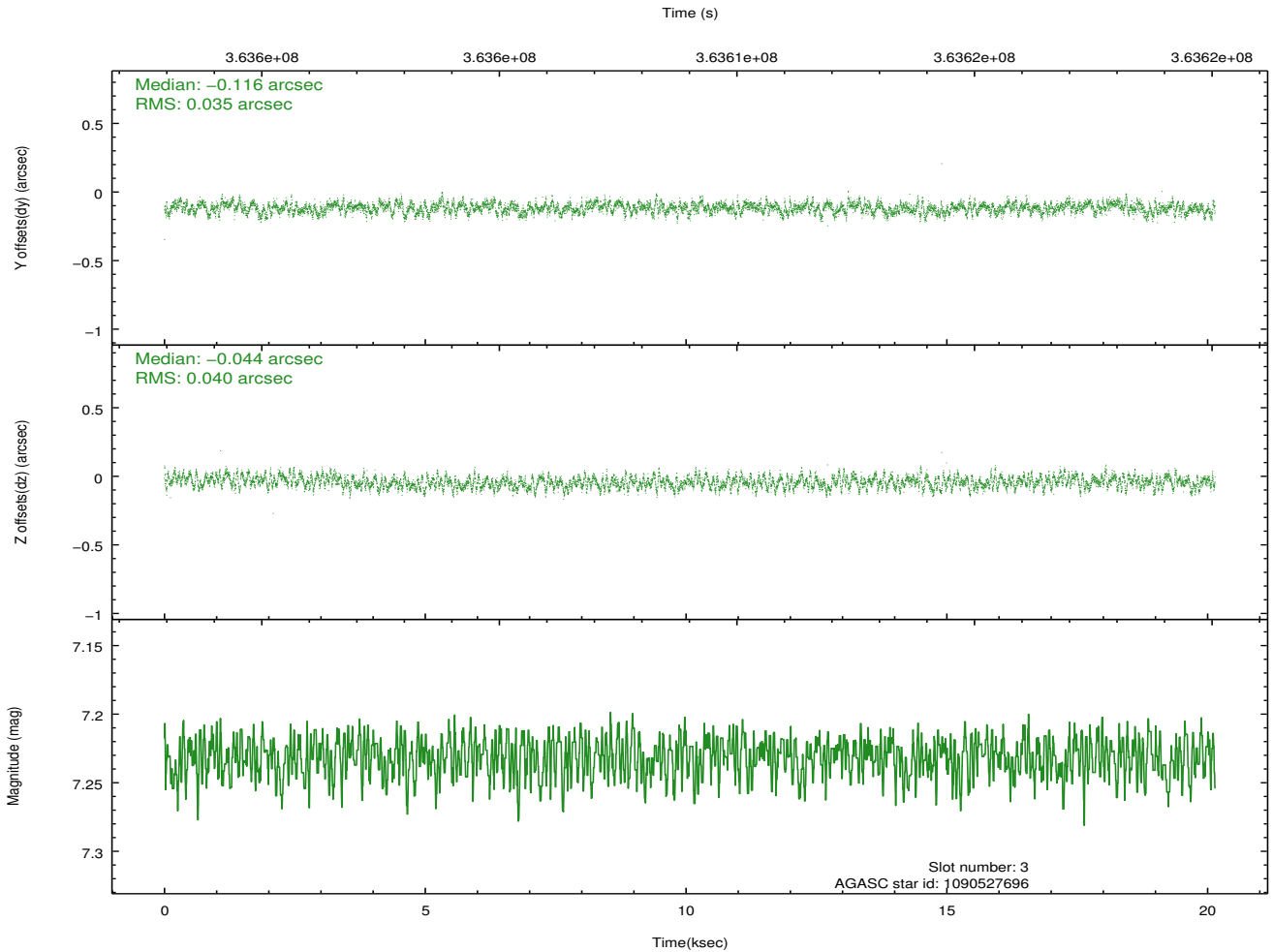
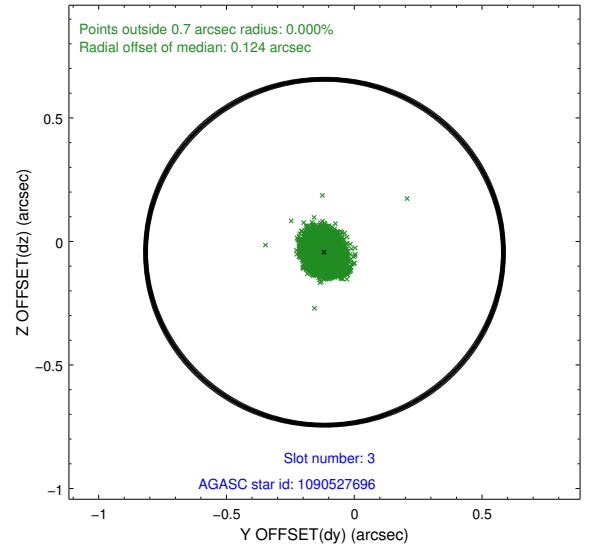
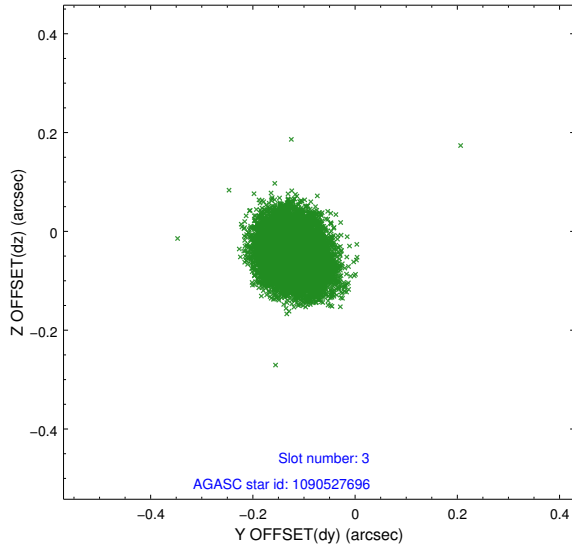


Slot Statistics

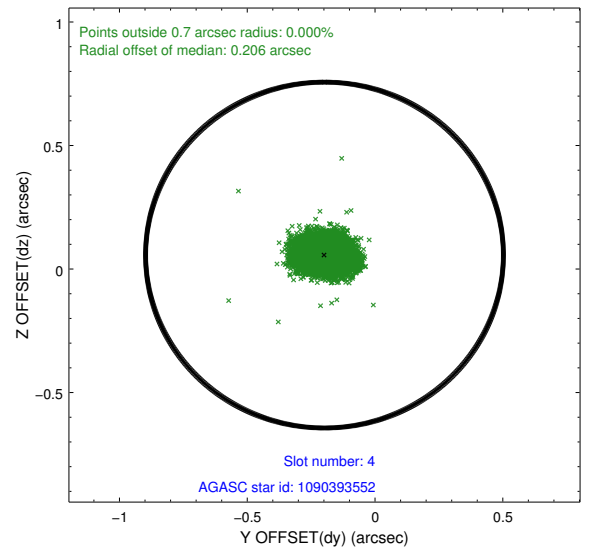
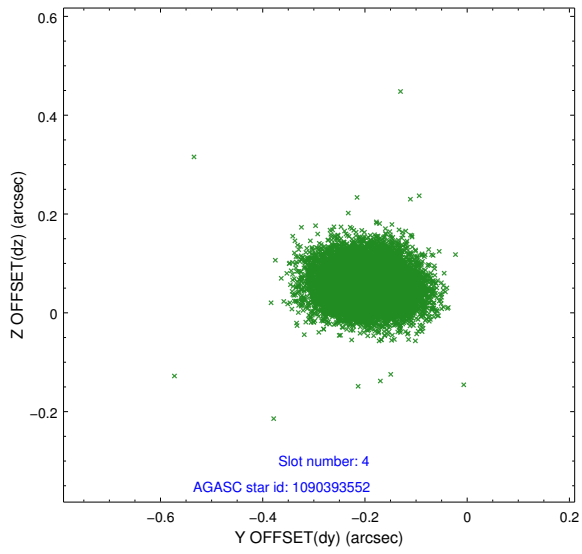
slot	status	id	mag	n_pts	med_dy	med_dz	dr1	dr2	ra	dec	mean_y	mean_z
0	FID	ACIS-I-1	7.02	4913	0.067	-0.010	0.013	0.024	0.000000	0.000000	920.97	-841.13
1	FID	ACIS-I-5	7.00	4914	-0.248	0.064	0.010	0.018	0.000000	0.000000	-1827.34	1056.34
2	FID	ACIS-I-6	7.03	4913	0.090	0.016	0.009	0.015	0.000000	0.000000	386.35	1701.00
3	GUIDE	1090527696	7.23	9826	-0.116	-0.044	0.057	0.090	246.414931	-49.424565	-645.98	2095.52
4	GUIDE	1090393552	7.94	9824	-0.198	0.057	0.070	0.112	244.664084	-49.413876	-2247.94	-1678.55
5	GUIDE	1090525496	8.62	9825	-0.009	-0.029	0.072	0.117	244.777039	-50.152945	319.69	-2424.60
6	GUIDE	1090525744	8.24	9821	0.126	-0.029	0.070	0.113	245.649389	-50.543894	2380.65	-1101.41
7	GUIDE	1090531048	8.41	9821	0.203	0.046	0.078	0.134	246.008201	-50.442227	2359.85	-201.61

2.4 Star Slots

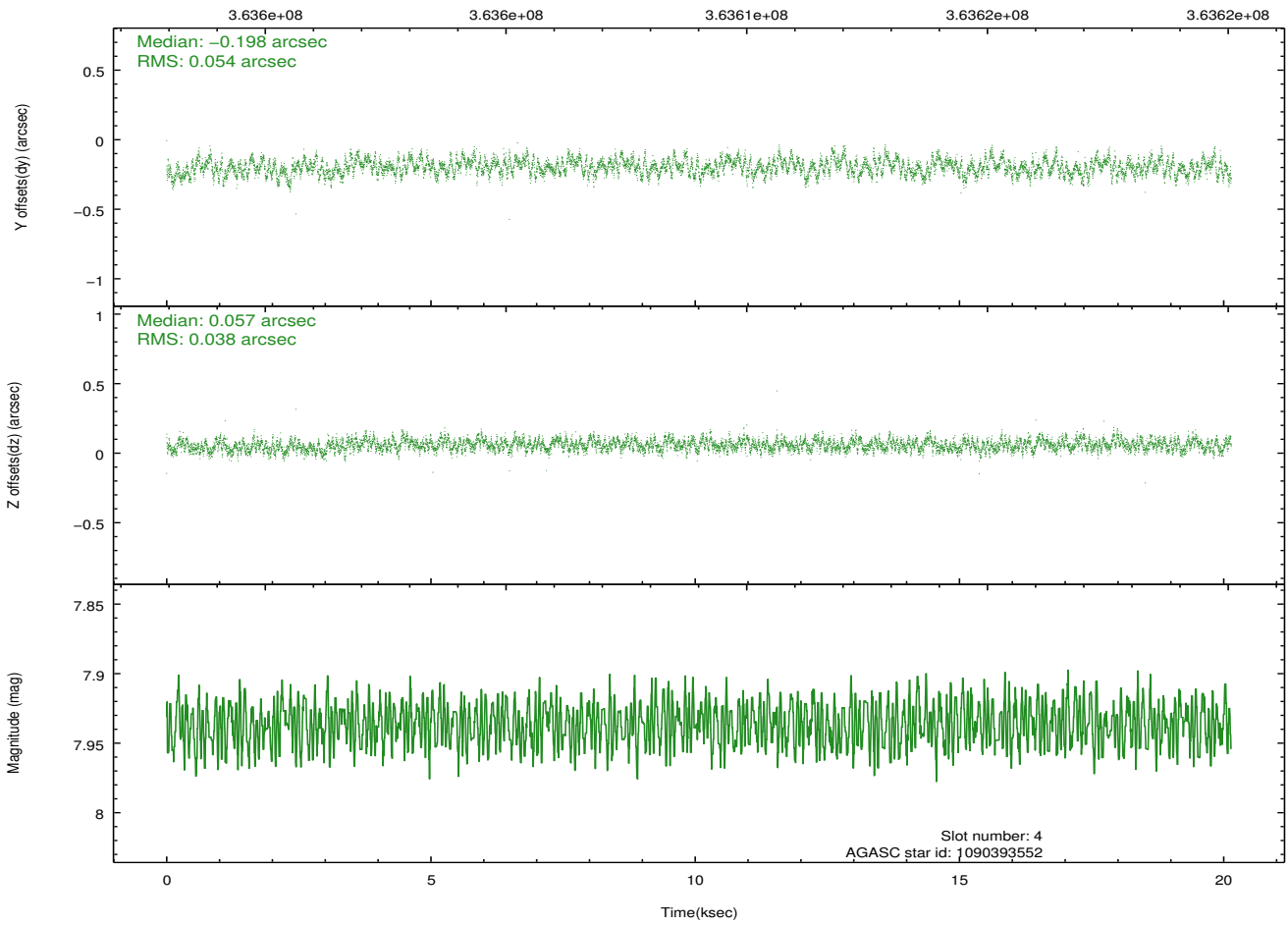
2.4.1 Slot 3



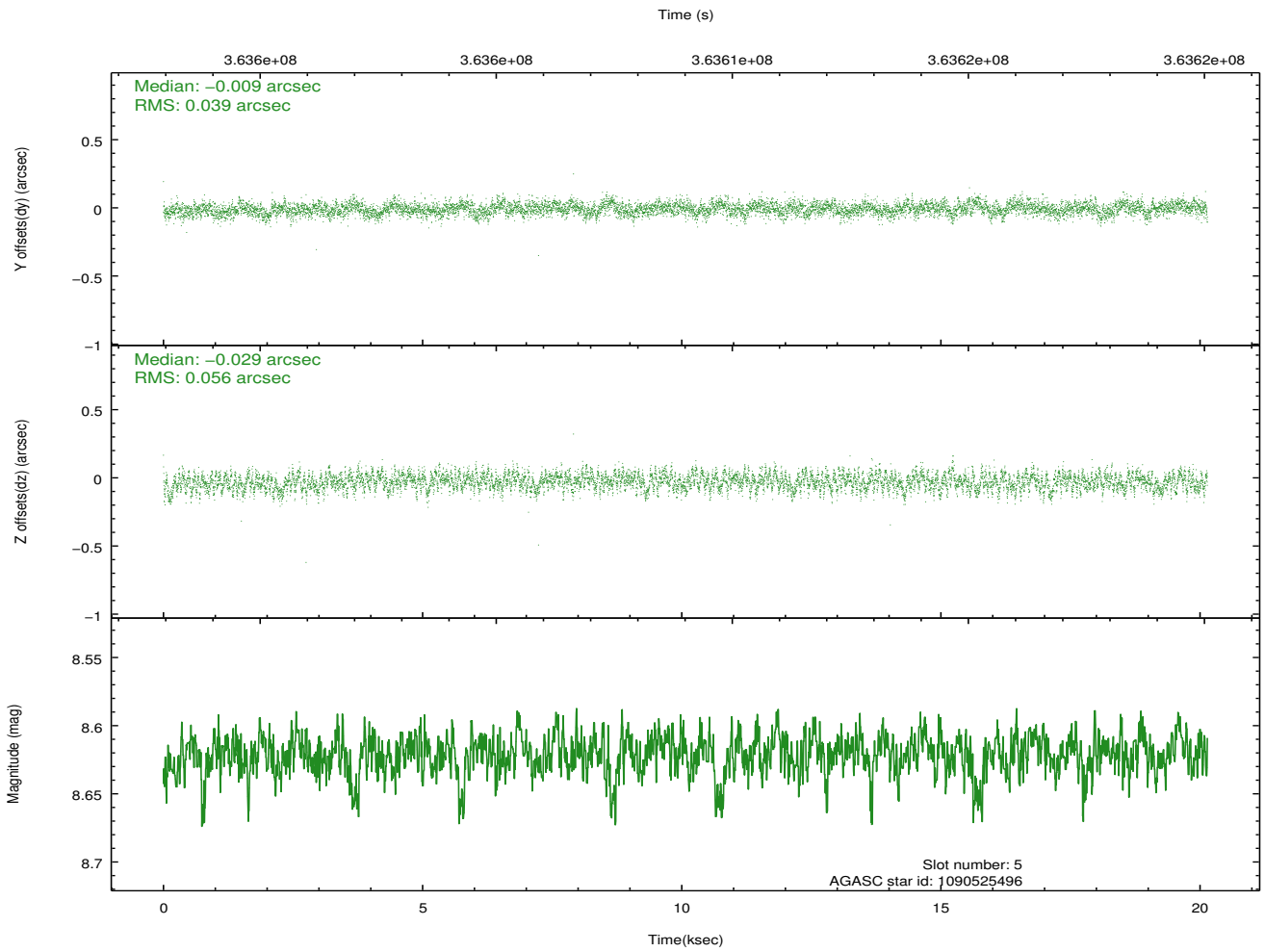
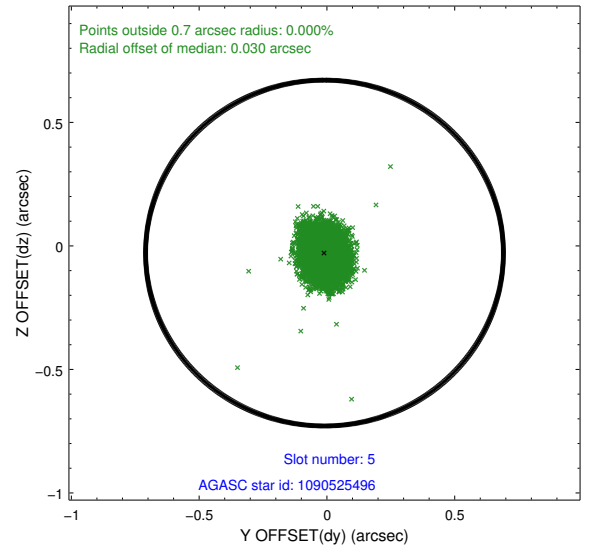
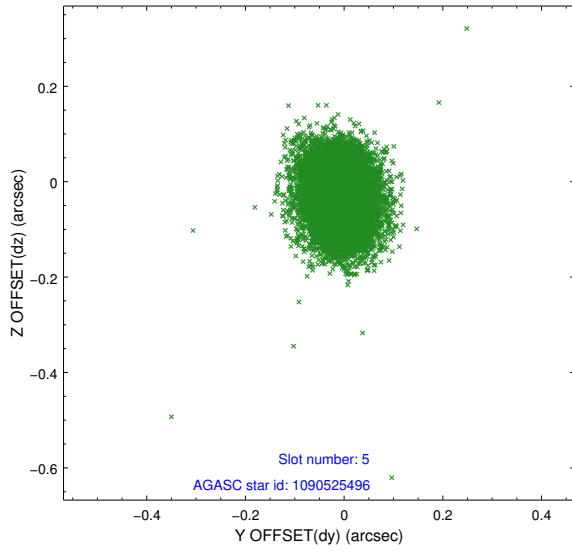
2.4.2 Slot 4



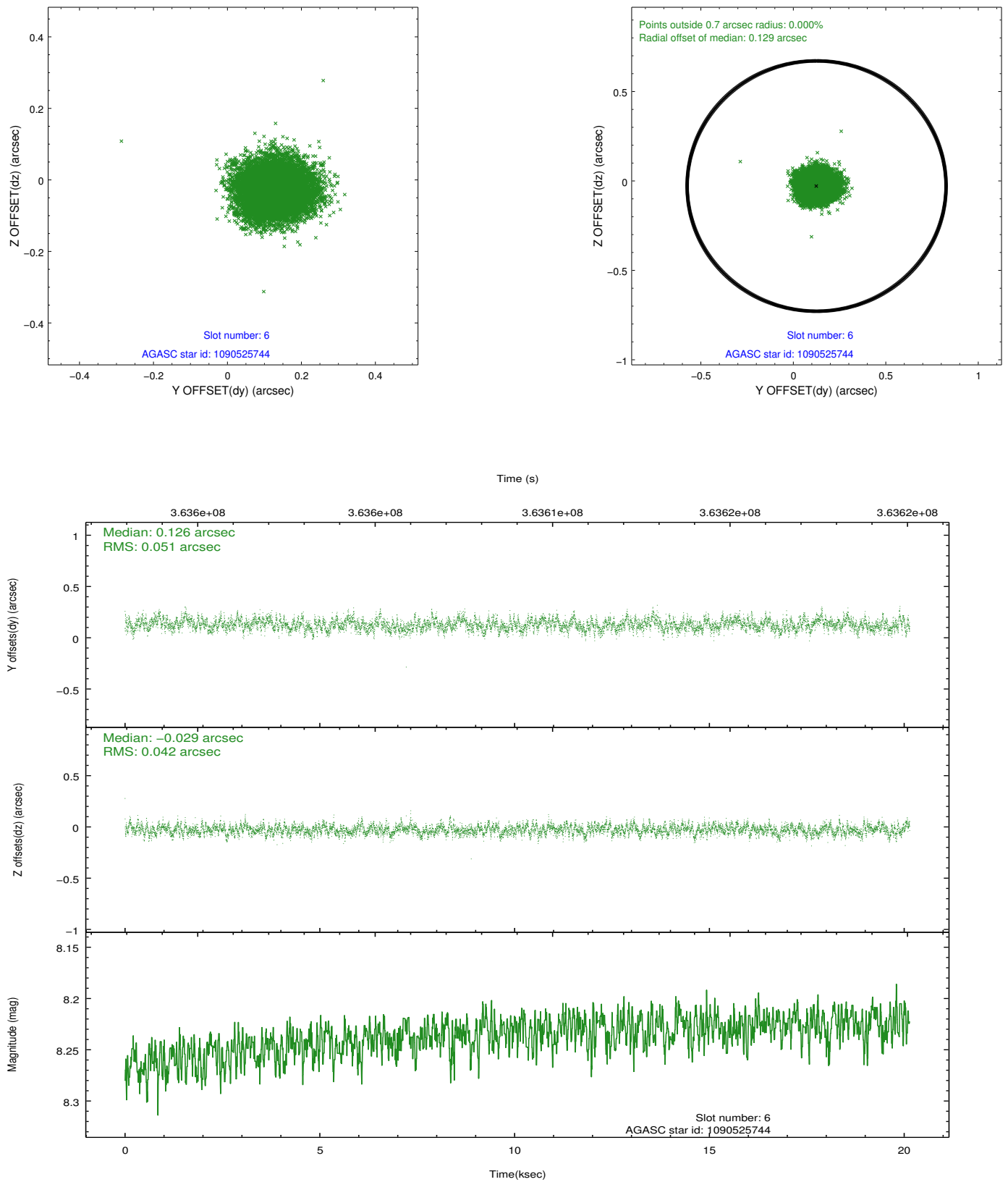
Time (s)



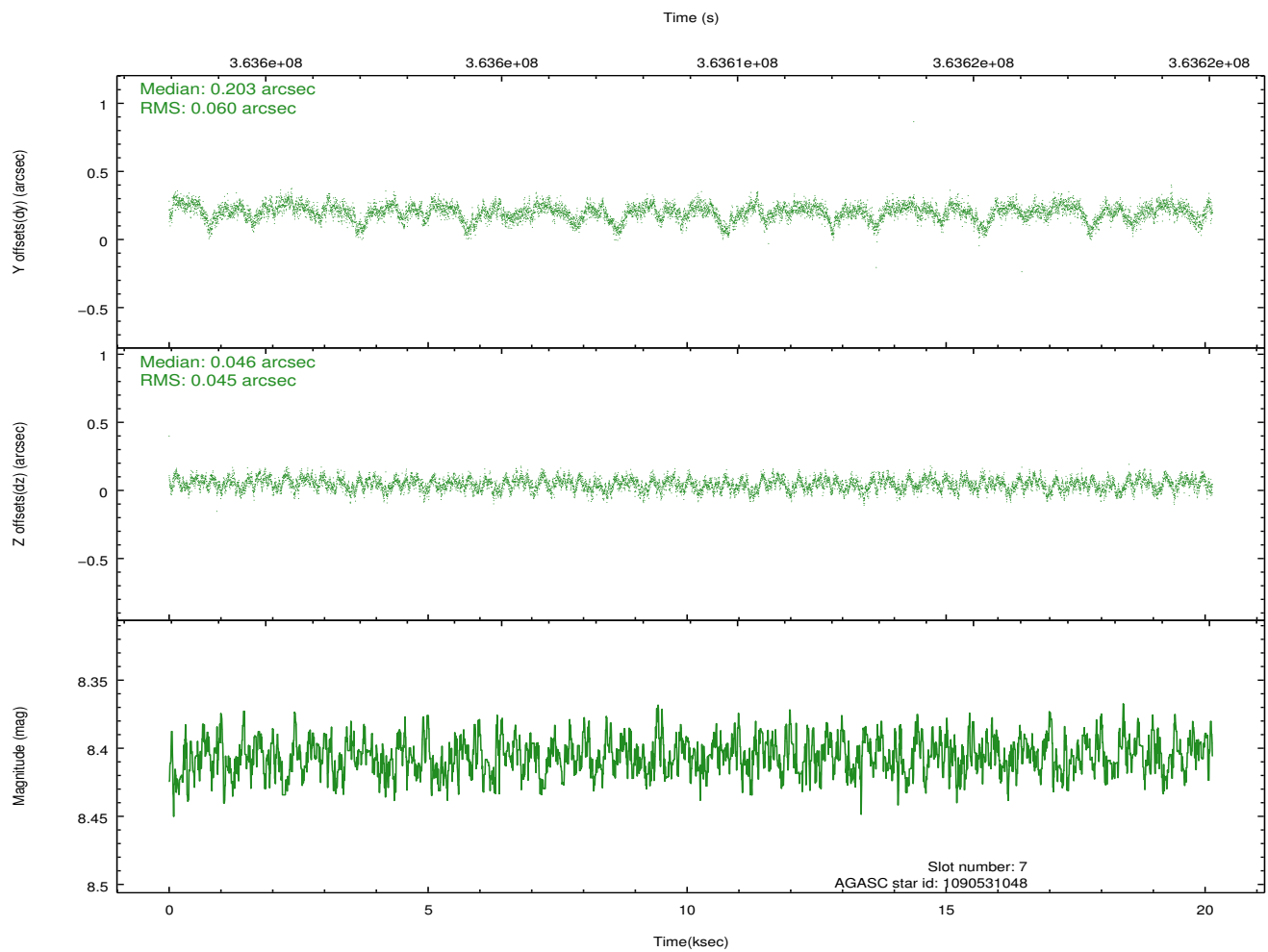
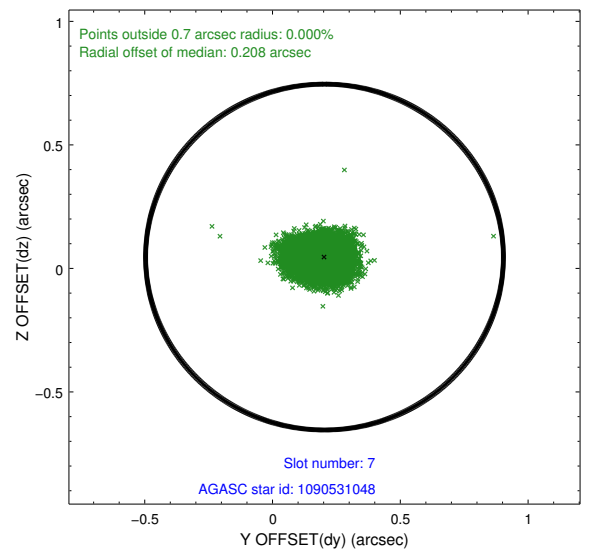
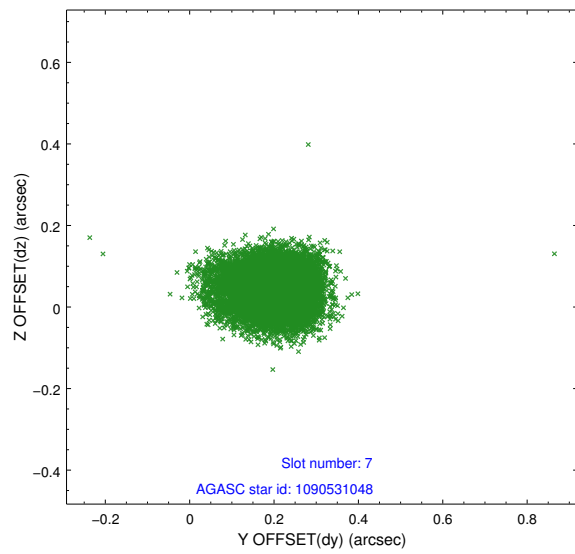
2.4.3 Slot 5



2.4.4 Slot 6

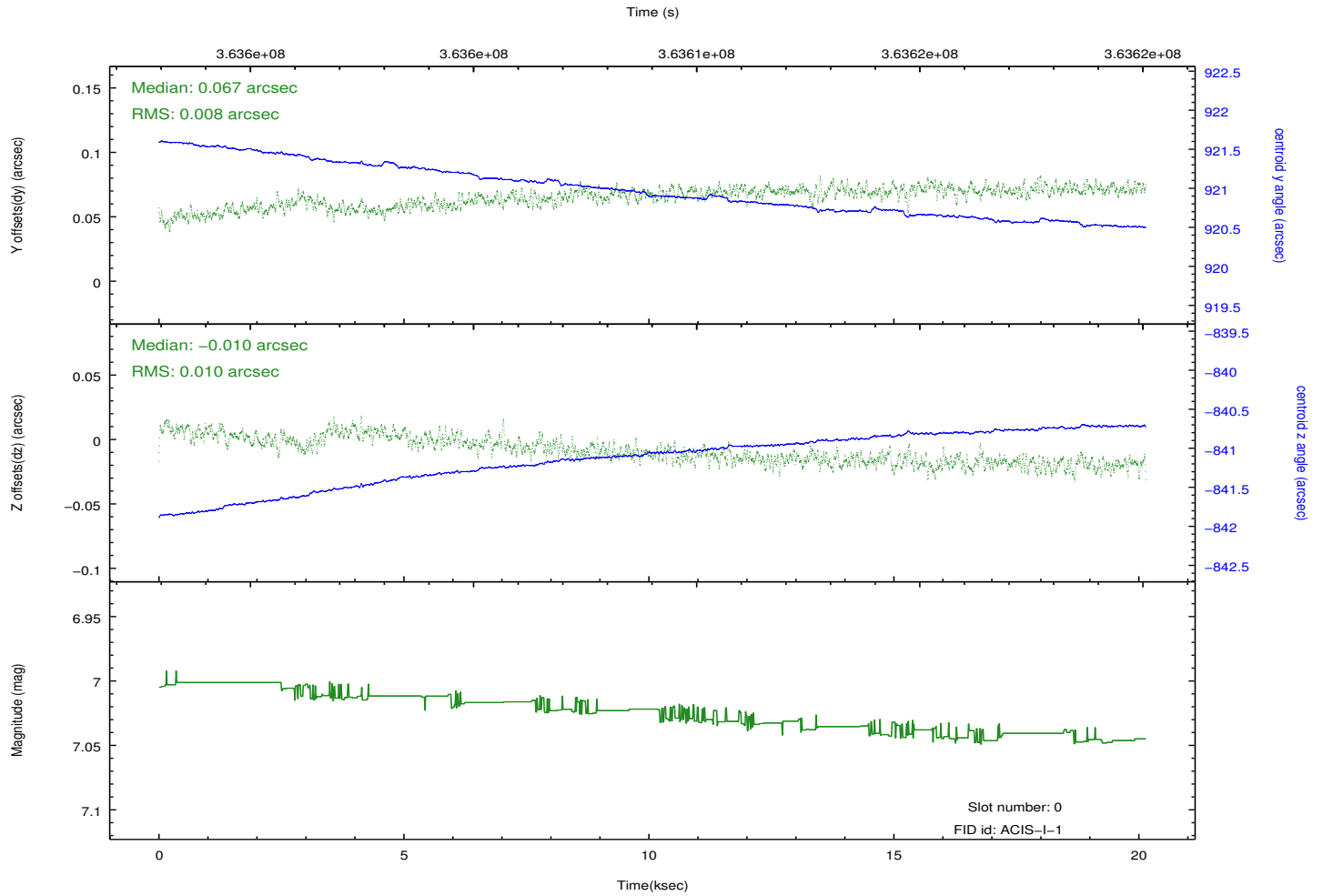
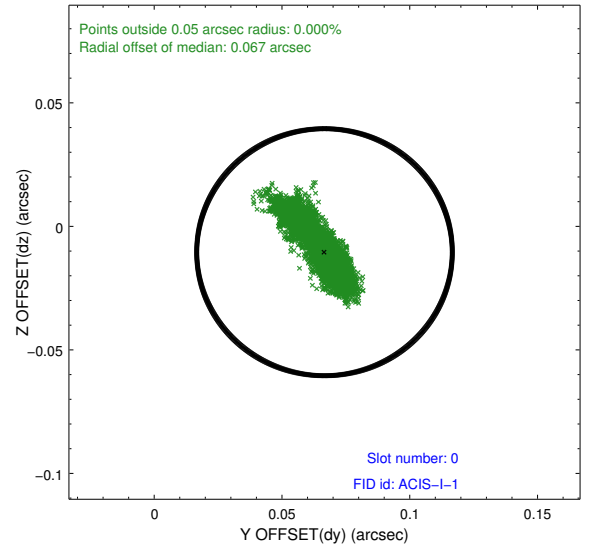
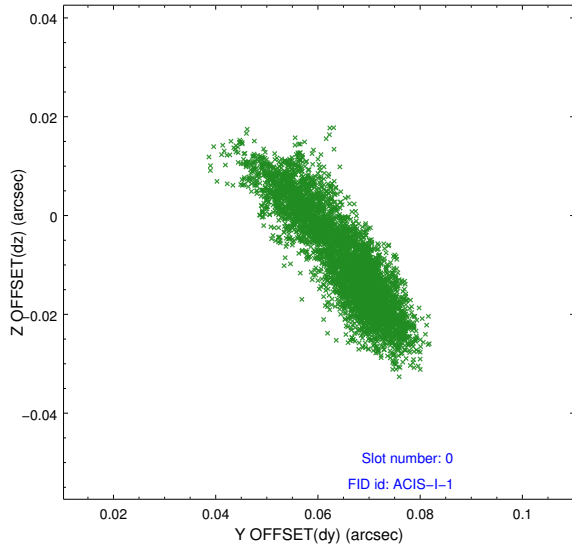


2.4.5 Slot 7

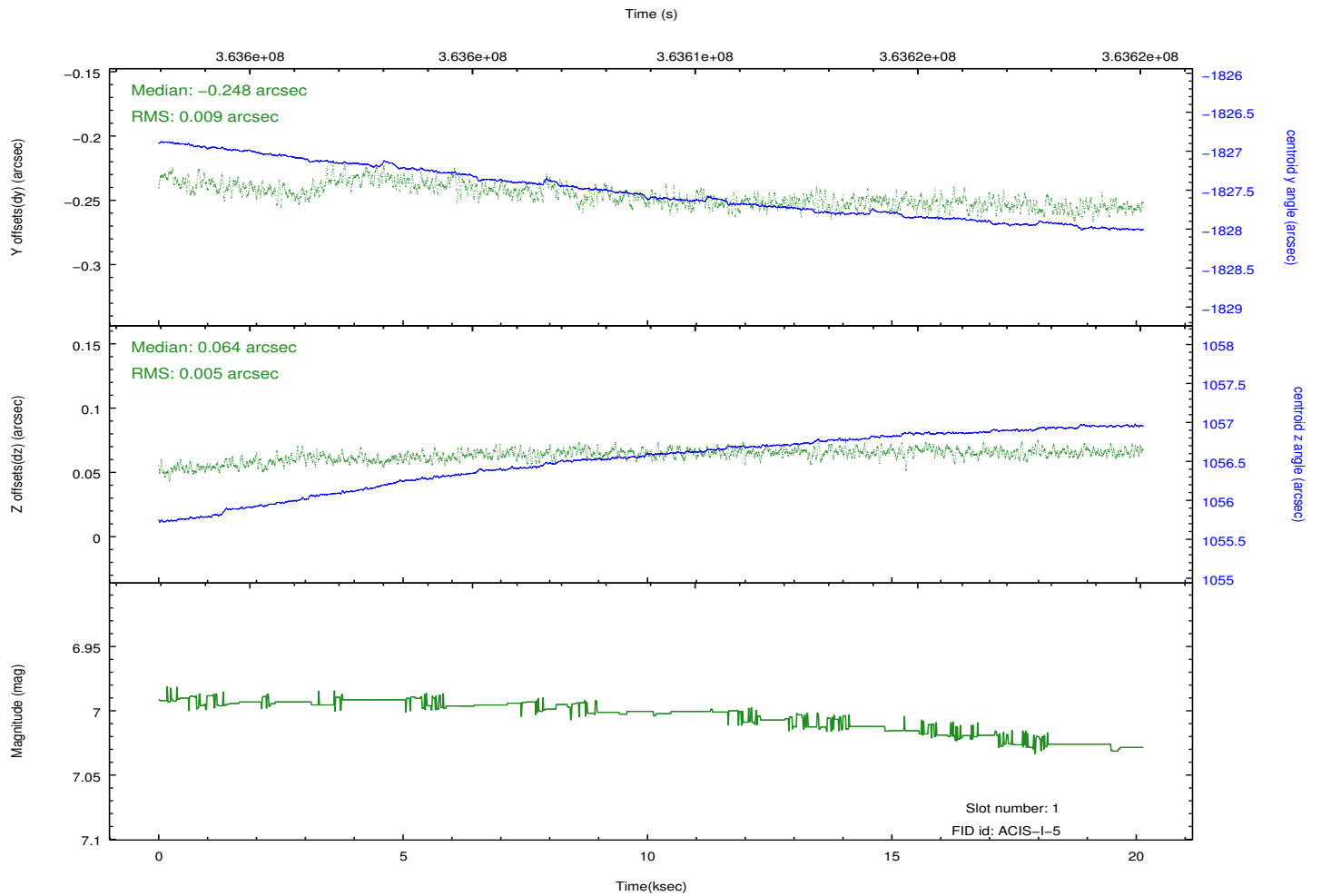
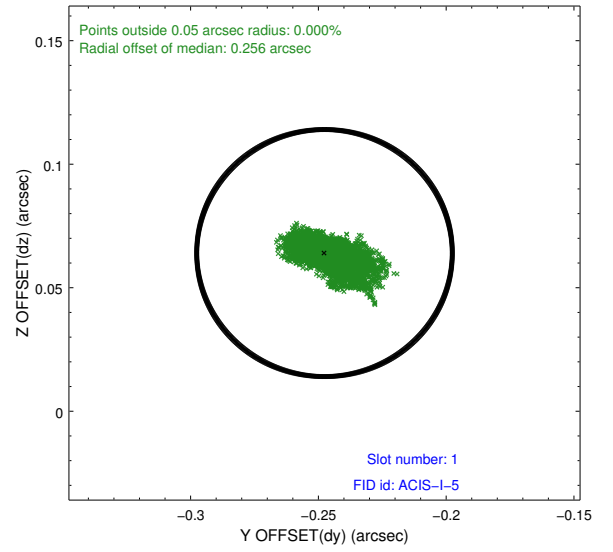
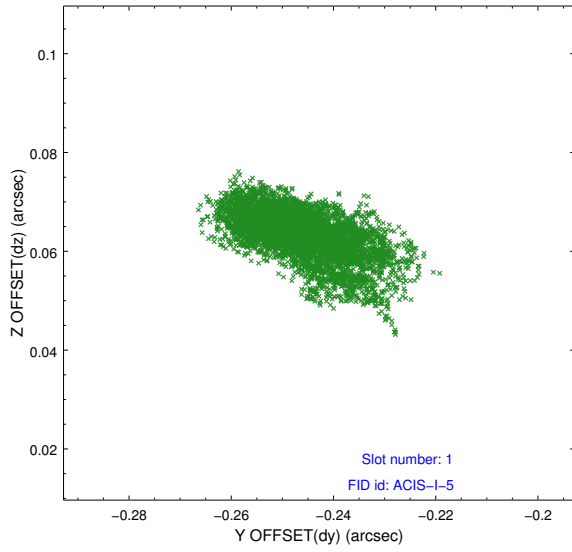


2.5 FID Slots

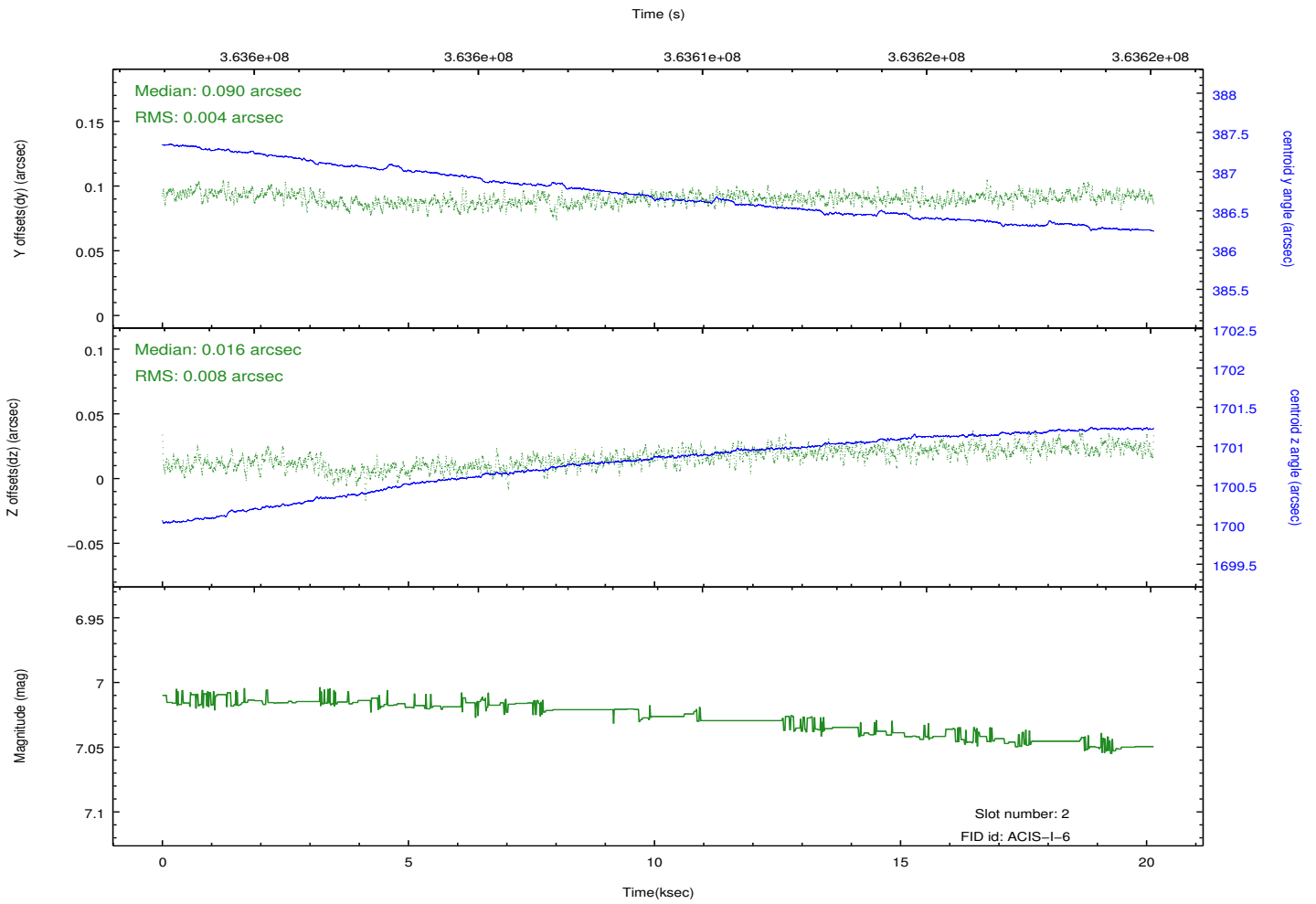
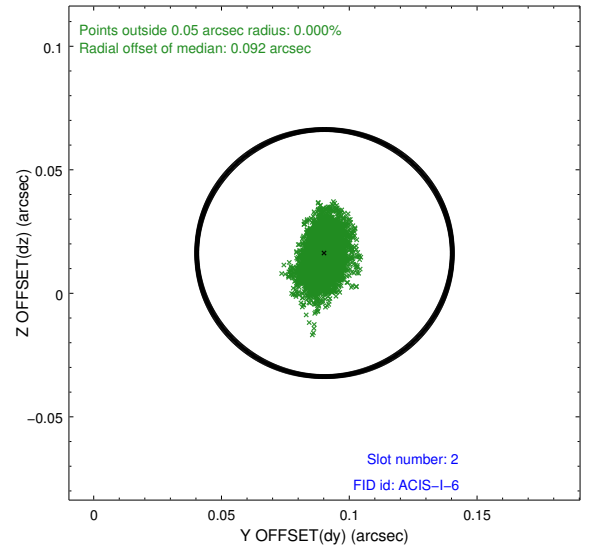
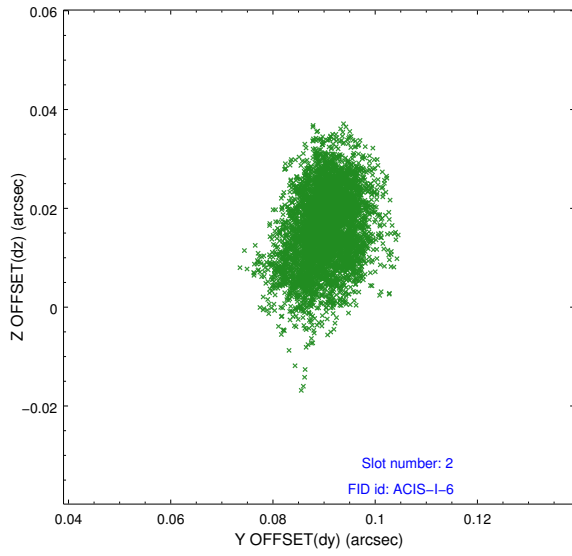
2.5.1 Slot 0



2.5.2 Slot 1



2.5.3 Slot 2



A Summary

A.1 Status

V&V Scientist	Jen Lauer
V&V Date (YYYY-MM-DD)	2012.06.13
V&V Edition	1
V&V Disposition and Status	OK
V&V Charge Time	20.1343999

A.2 Comments