

V&V Reference Report

L2 ASCDS Version : 8.1.2

Observation 1099 - L2 Version 3
Chandra X-Ray Center

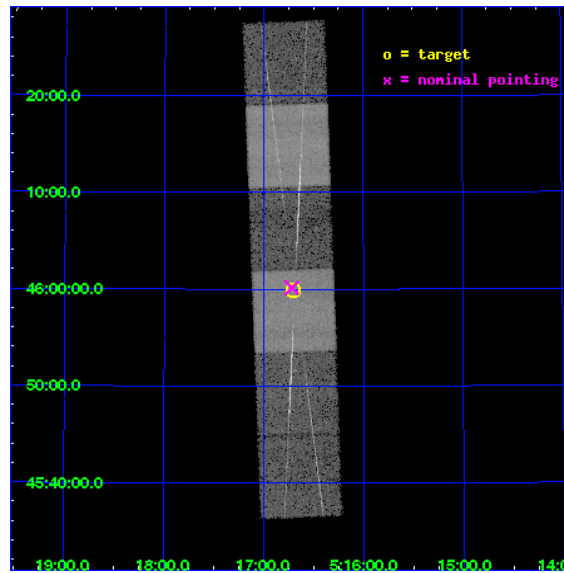
L2 Processing Date : Dec 17 2009

Contents

1	Front	2
2	OBI	3
2.1	OBI	3
2.1.1	Images	3
2.1.2	Bias	3
2.1.3	Parameters	4
2.1.4	Events	4
2.2	Compared Parameters	5
2.3	Aspect	6
2.4	Star Slots	9
2.4.1	Slot 3	9
2.4.2	Slot 4	10
2.4.3	Slot 5	11
2.4.4	Slot 6	12
2.4.5	Slot 7	13
2.5	FID Slots	14
2.5.1	Slot 0	14
2.5.2	Slot 1	15
2.5.3	Slot 2	16
3	Gratings	17
3.1	HEG Arm	17
3.2	MEG Arm	19
A	Summary	21
A.1	Status	21
A.2	Comments	21

1 Front

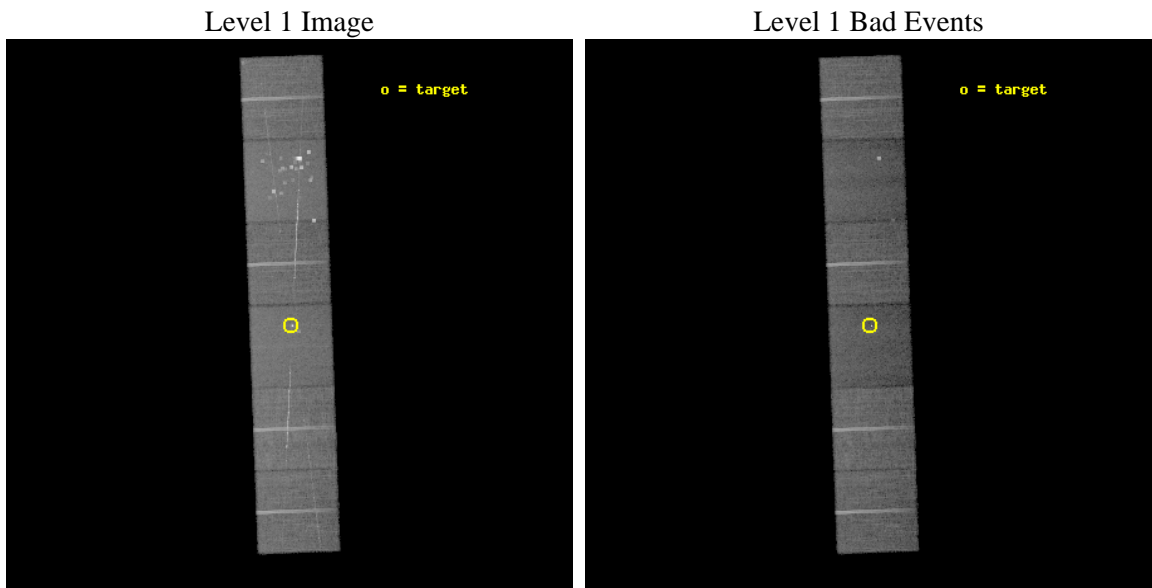
seq_num	280049	Sequence number
obs_id	1099	Observation id
title	 	Proposal title
observer	Dr. CXC Calibration	Principal investigator
object	CAPELLA	Source name
dtcycle	0	
cycle	P	events from which exps? Prim/Second/Both
ra_targ	79.17625	Observer's specified target RA
dec_targ	45.997889	Observer's specified target Dec
ra_nom	79.179669821603	Nominal RA
dec_nom	46.00258418451	Nominal Dec
roll_nom	87.871976900431	Nominal Roll
revision	3	Processing version of data
ontime	14757.752681784	Sum of GTIs [s]
livetime	14570.881131276	Livetime [s]
ontime4	14757.670621715	Sum of GTIs [s]
ontime5	14757.711641781	Sum of GTIs [s]
ontime6	14757.547481783	Sum of GTIs [s]
ontime7	14757.752681784	Sum of GTIs [s]
ontime8	14757.629581712	Sum of GTIs [s]
ontime9	14754.347561583	Sum of GTIs [s]
l2events	215246	Number of level 2 events



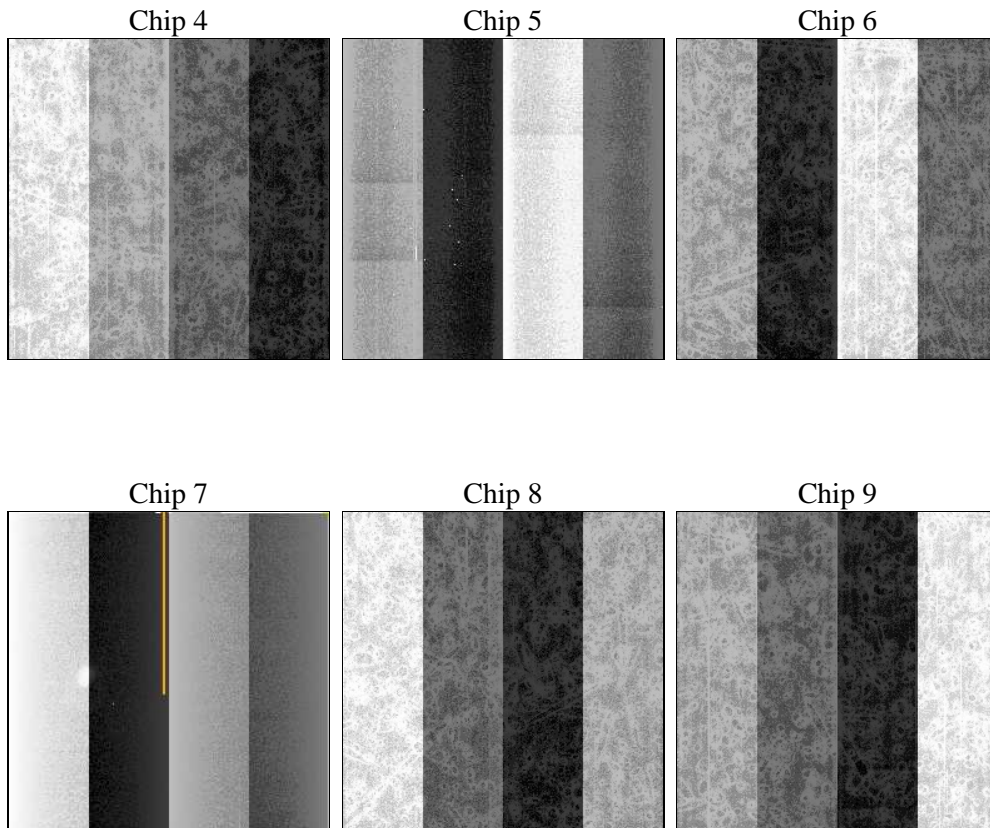
2 OBI

2.1 OBI

2.1.1 Images



2.1.2 Bias



2.1.3 Parameters

obi_num	1	Obi number	sched_exp_time	15000.000000	Scheduled observation exposure time
ascdsver	8.1.2	ASCDS version number	ontime	14757.752681784	Sum of GTIs [s]
caldbver	4.1.4	 	ontime4	14757.670621715	Sum of GTIs [s]
date	2009-12-17T11:38:26	Date and time of file creation	ontime5	14757.711641781	Sum of GTIs [s]
revision	3	Processing version of data	ontime6	14757.547481783	Sum of GTIs [s]
			ontime7	14757.752681784	Sum of GTIs [s]
			ontime8	14757.629581712	Sum of GTIs [s]
			ontime9	14754.347561583	Sum of GTIs [s]
			l1events	1054630	Number of level 1 events

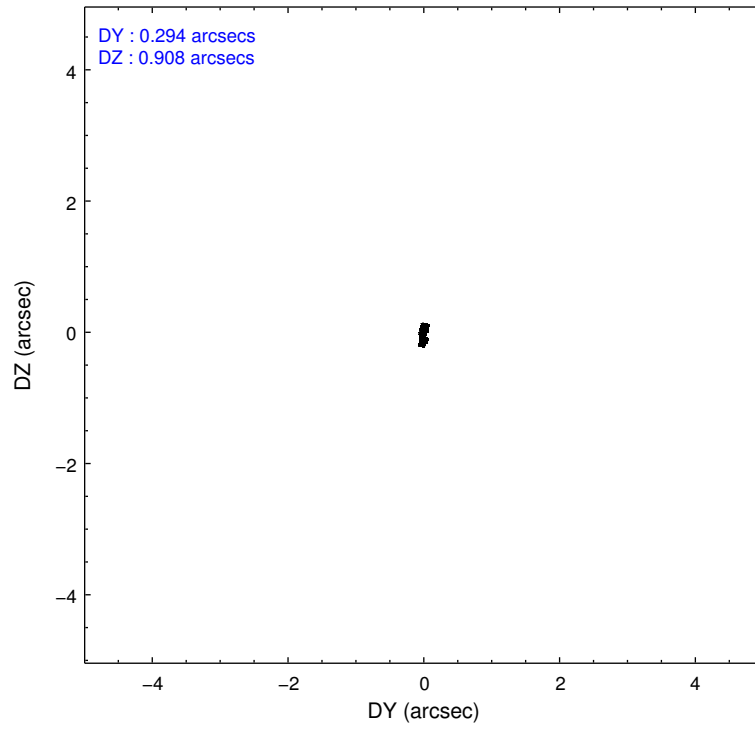
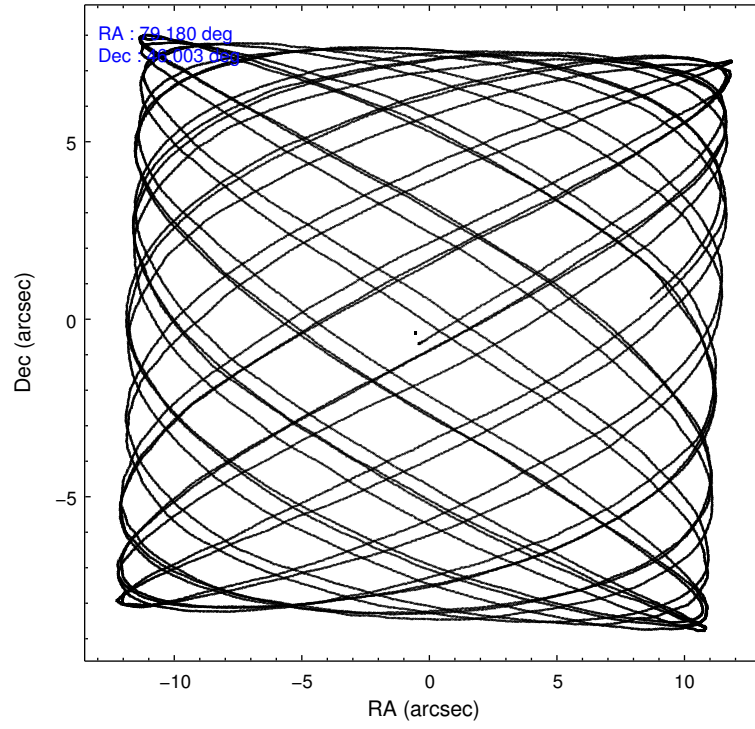
2.1.4 Events

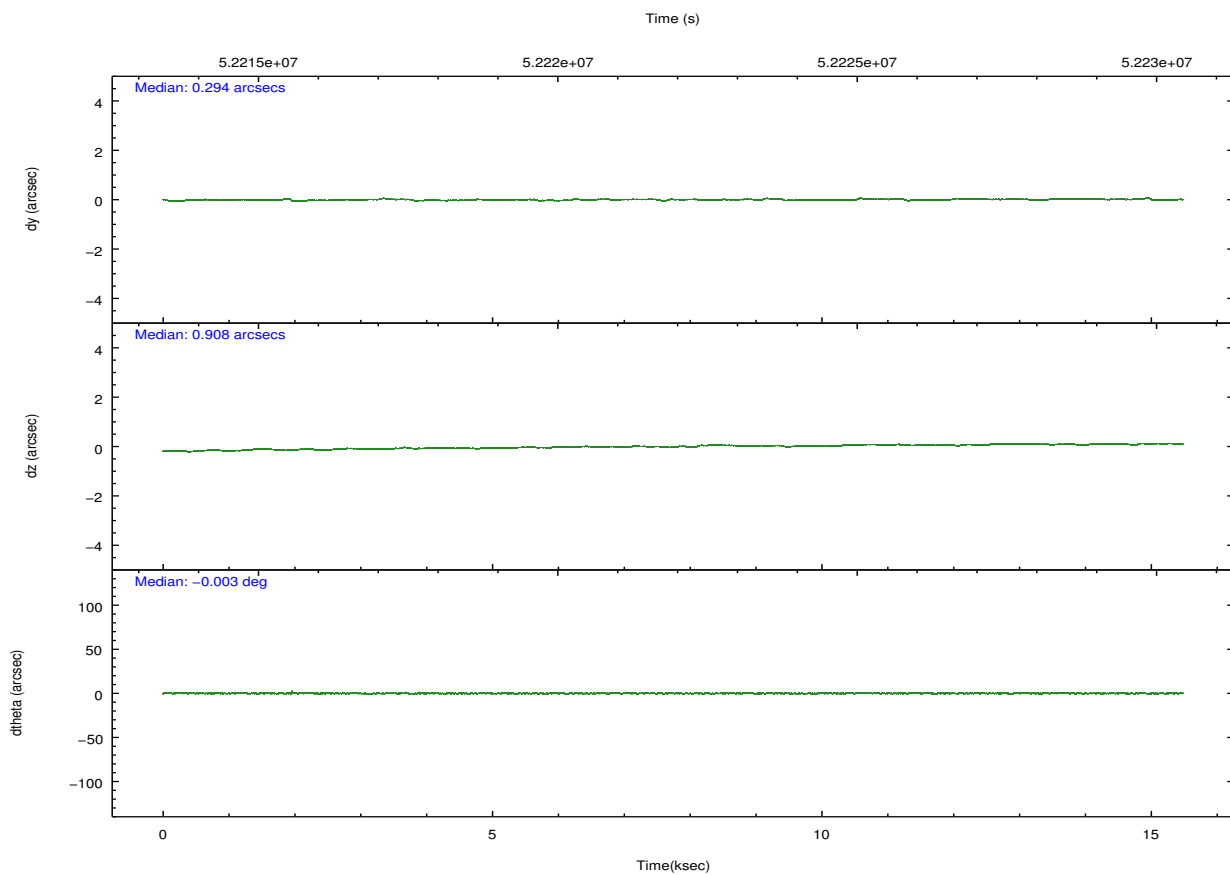
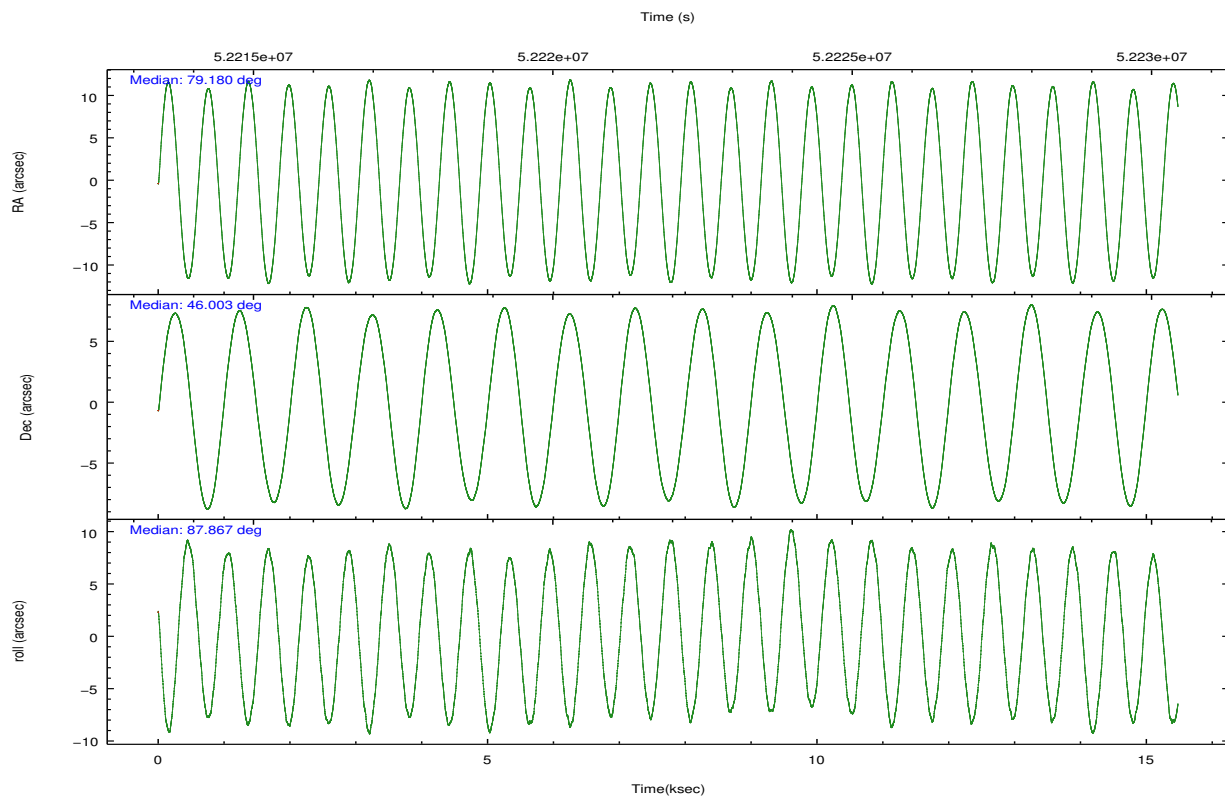
	ccd 4	ccd 5	ccd 6	ccd 7	ccd 8	ccd 9		ccd 4	ccd 5	ccd 6	ccd 7	ccd 8	ccd 9
level 1 events	162338	232629	154284	162080	192195	151104	grade 0 events	6230	45500	10969	5698	16880	6148
rejected events	146559	99059	132212	94762	154090	134771		3%	19%	7%	3%	8%	4%
rejected %	90%	42%	85%	58%	80%	89%	grade 1 events	46	926	75	182	134	35
								0%	0%	0%	0%	0%	0%
							grade 2 events	4567	27266	5128	11143	9036	4507
								2%	11%	3%	6%	4%	2%
							grade 3 events	1170	7199	1291	6699	2593	1300
								0%	3%	0%	4%	1%	0%
							grade 4 events	1072	6574	1284	5694	2433	1178
								0%	2%	0%	3%	1%	0%
							grade 5 events	2941	8406	3520	10942	4958	3921
								1%	3%	2%	6%	2%	2%
							grade 6 events	2745	47087	3409	38111	7177	3206
								1%	20%	2%	23%	3%	2%
							grade 7 events	143567	89671	128608	83611	148984	130809
								88%	38%	83%	51%	77%	86%

2.2 Compared Parameters

Parameter	Planned	Actual	Parameter	Planned	Actual
Instrument	ACIS	ACIS	Obspar format version number	6	6
Detector	ACIS-456789	ACIS-456789	Obspar file type	PREDICTED	ACTUAL
Grating	HETG	HETG	Obspar update status	NONE	UPDATED
Data mode	FAINT	FAINT	Number of optional ACIS chips dropped	0	0
Observation mode	POINTING	POINTING	On-chip summing requested	N	N
Pointing RA	79.197666	79.17966982160326	Subarray requested	NONE	NONE
Pointing Dec	45.977947	46.0025841845097	Alternating exposures requested	N	N
Pointing Roll	87.702408	87.87197690043062	Primary exposure time	0.000000	3.2
SIM focus pos (mm)	-0.684267	-0.7362356599963374			
SIM defocus (mm)	0	-0.0519681986964412			
SIM translation stage pos (mm)	-190.132523	-190.1425803651734			
SIM translation stage offset (mm)	0	0.01005778216563158			
Observation start time	52214664.184000	52213997.750929			
Observation start date	1999-08-28T08:03:20	1999-08-28T07:53:17			
Observation end time	52229664.184000	52229797.101497			
Observation end date	1999-08-28T12:13:20	1999-08-28T12:16:37			
Read mode	TIMED	TIMED			

2.3 Aspect



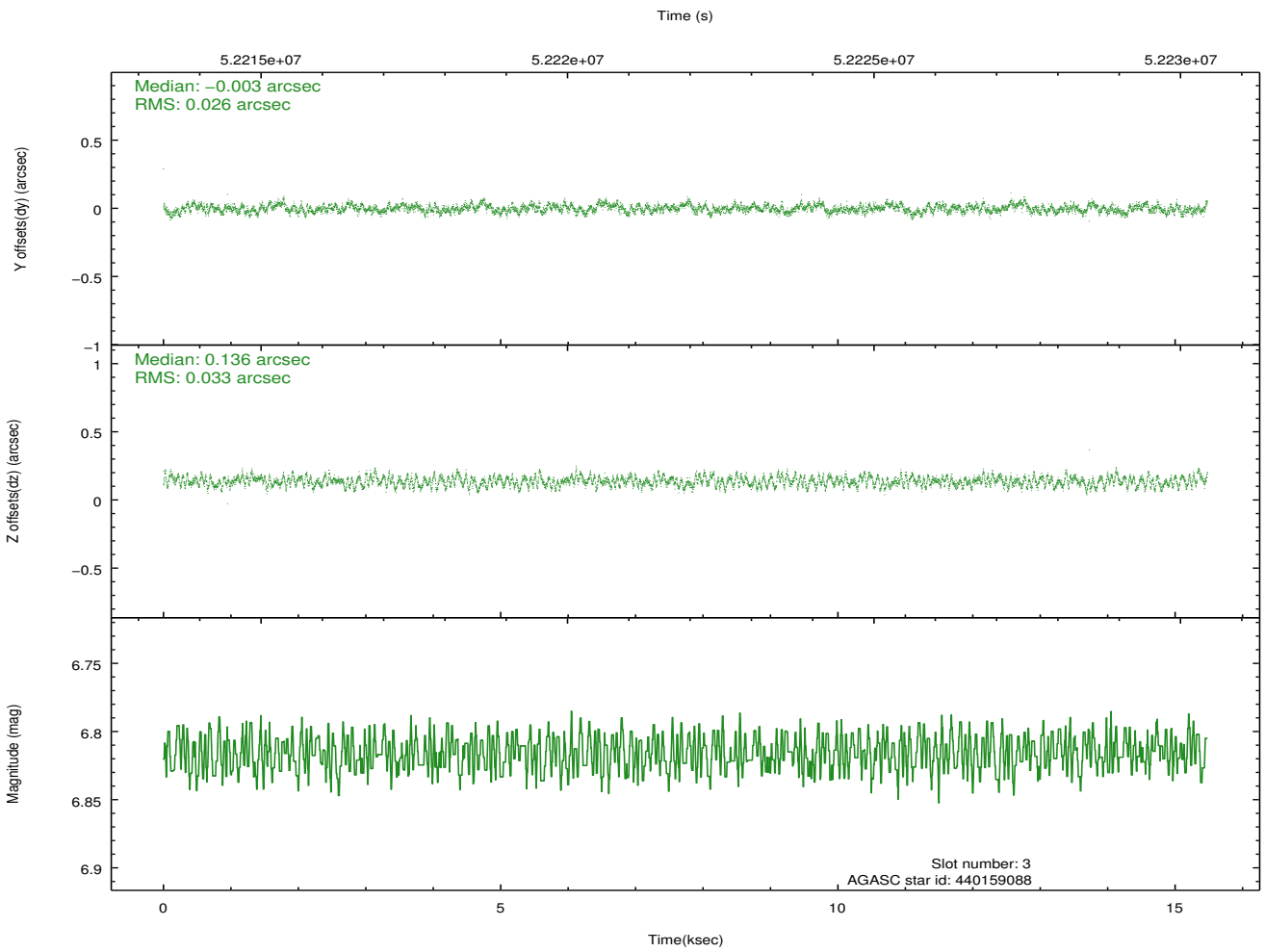
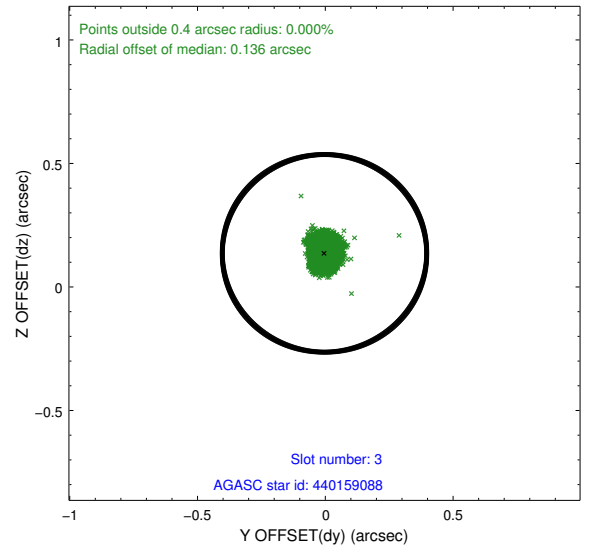
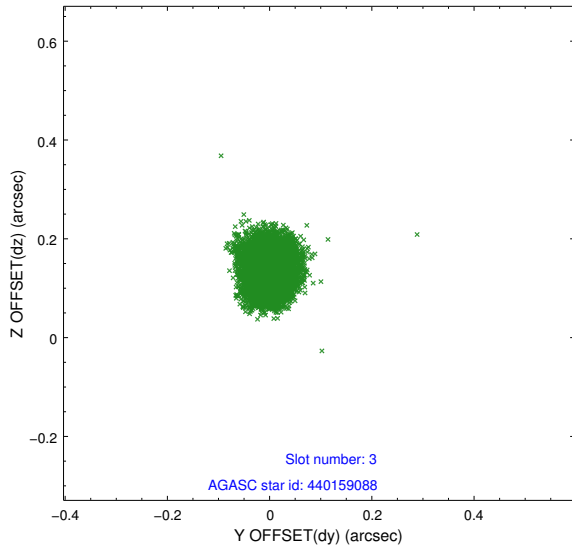


Slot Statistics

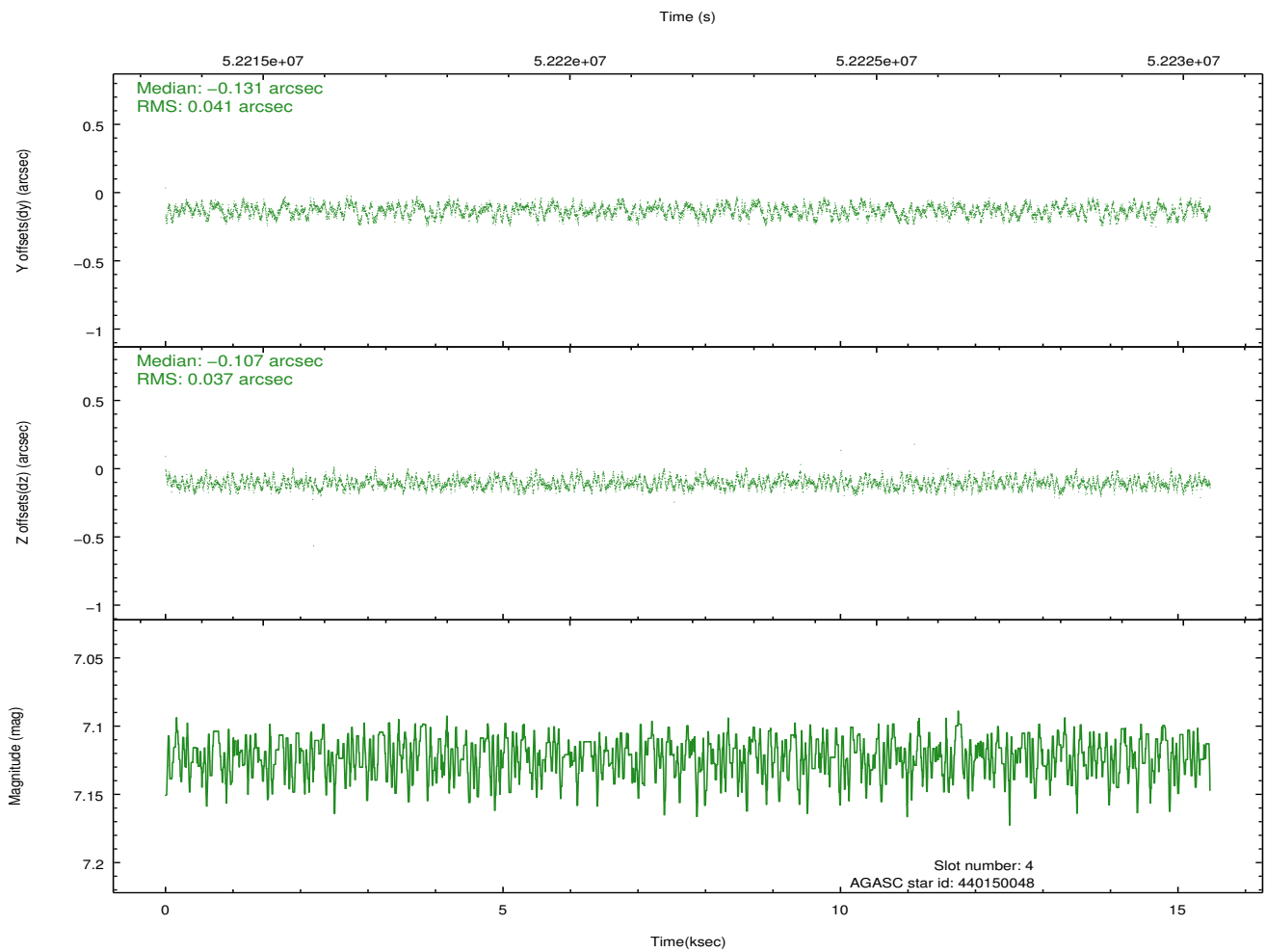
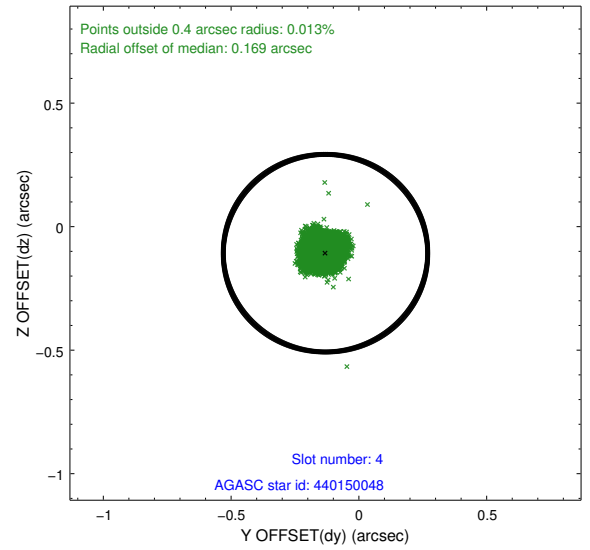
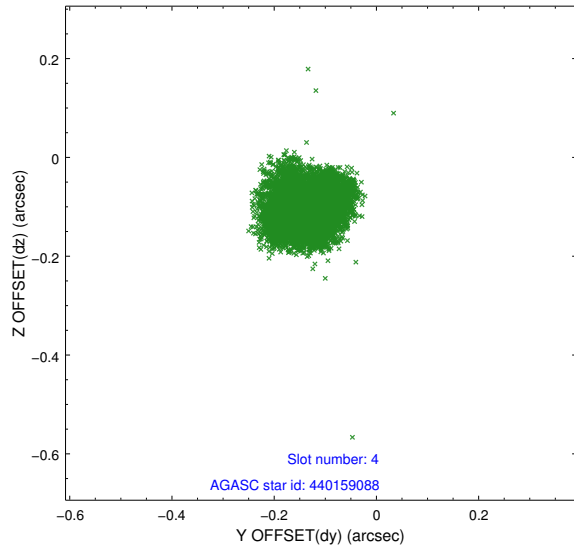
slot	status	id	mag	n_pts	med_dy	med_dz	dr1	dr2	ra	dec	mean_y	mean_z
0	FID	ACIS-S-2	7.12	7552	-0.019	0.006	0.006	0.011	0.000000	0.000000	-752.91	-1721.82
1	FID	ACIS-S-4	7.22	7551	0.079	0.008	0.005	0.010	0.000000	0.000000	2160.46	186.54
2	FID	ACIS-S-5	7.25	7552	-0.091	-0.005	0.006	0.011	0.000000	0.000000	-1805.69	180.34
3	GUIDE	440159088	6.82	7552	-0.003	0.136	0.046	0.072	79.453034	46.128063	566.45	-614.12
4	GUIDE	440150048	7.12	7552	-0.131	-0.107	0.061	0.092	79.112838	46.416060	1567.39	274.16
5	GUIDE	440149808	8.41	7551	-0.069	-0.016	0.057	0.092	78.873930	46.405955	1508.95	865.59
6	GUIDE	438460832	8.98	7549	0.096	-0.215	0.091	0.144	78.414614	45.554782	-1591.65	1912.08
7	GUIDE	440145944	9.09	7548	0.104	0.203	0.079	0.128	80.083717	45.428844	-1873.19	-2314.65

2.4 Star Slots

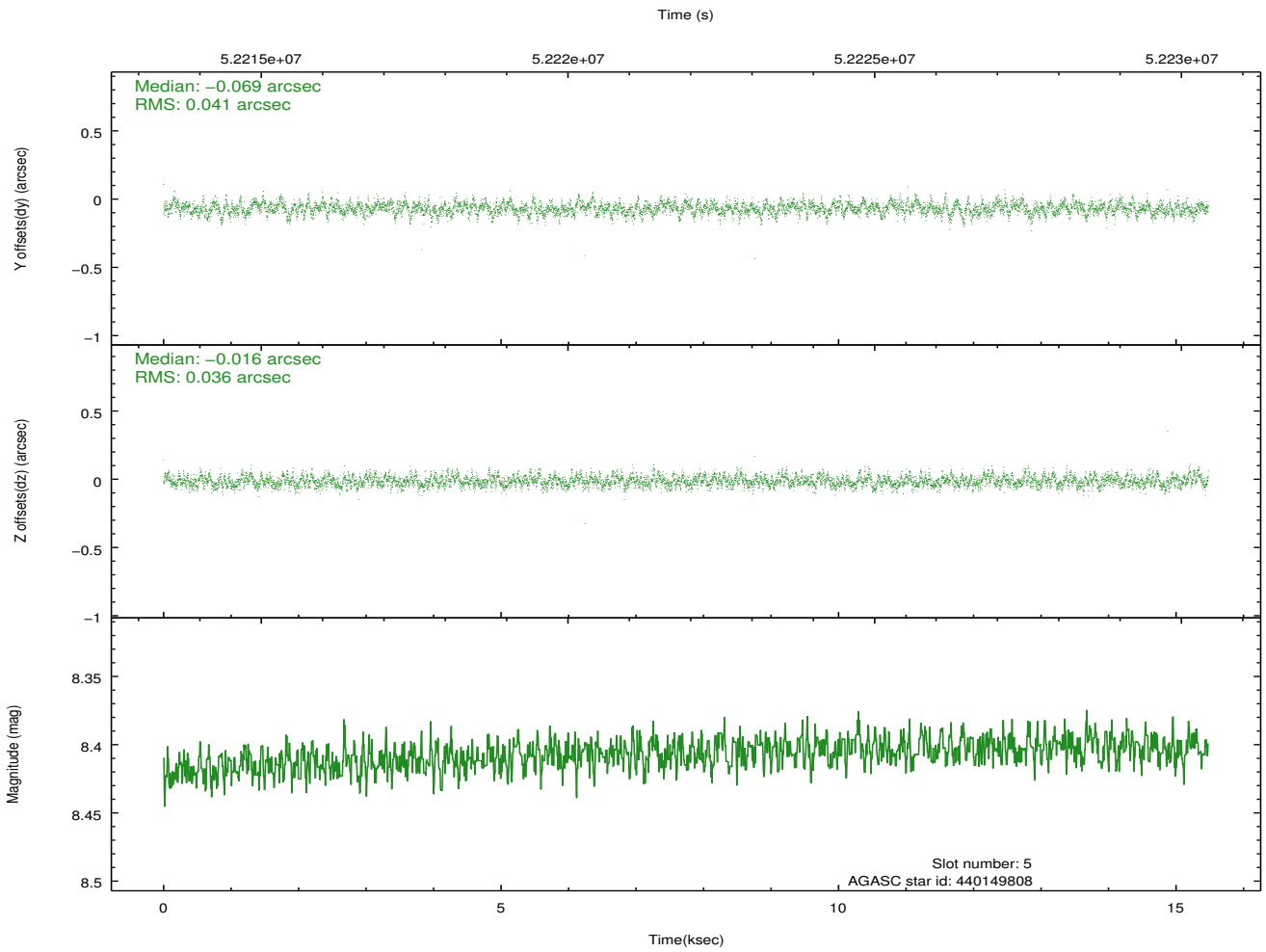
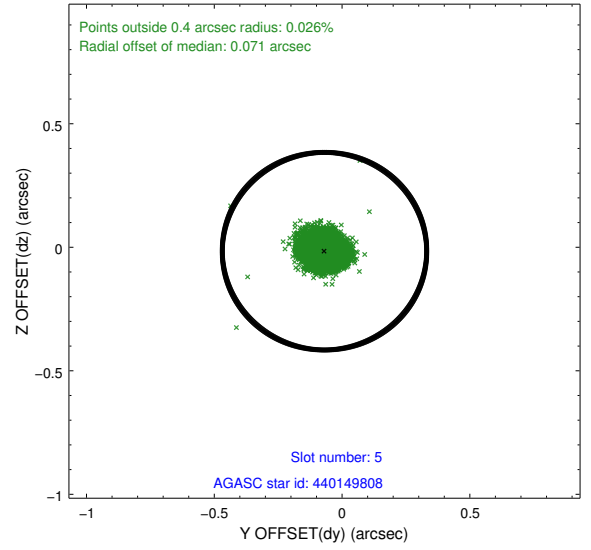
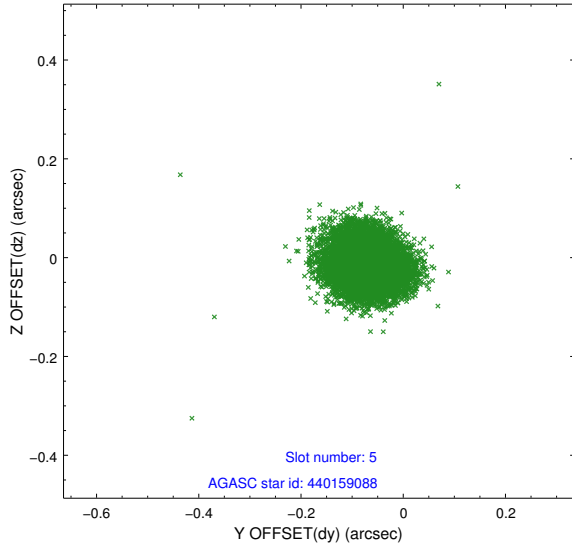
2.4.1 Slot 3



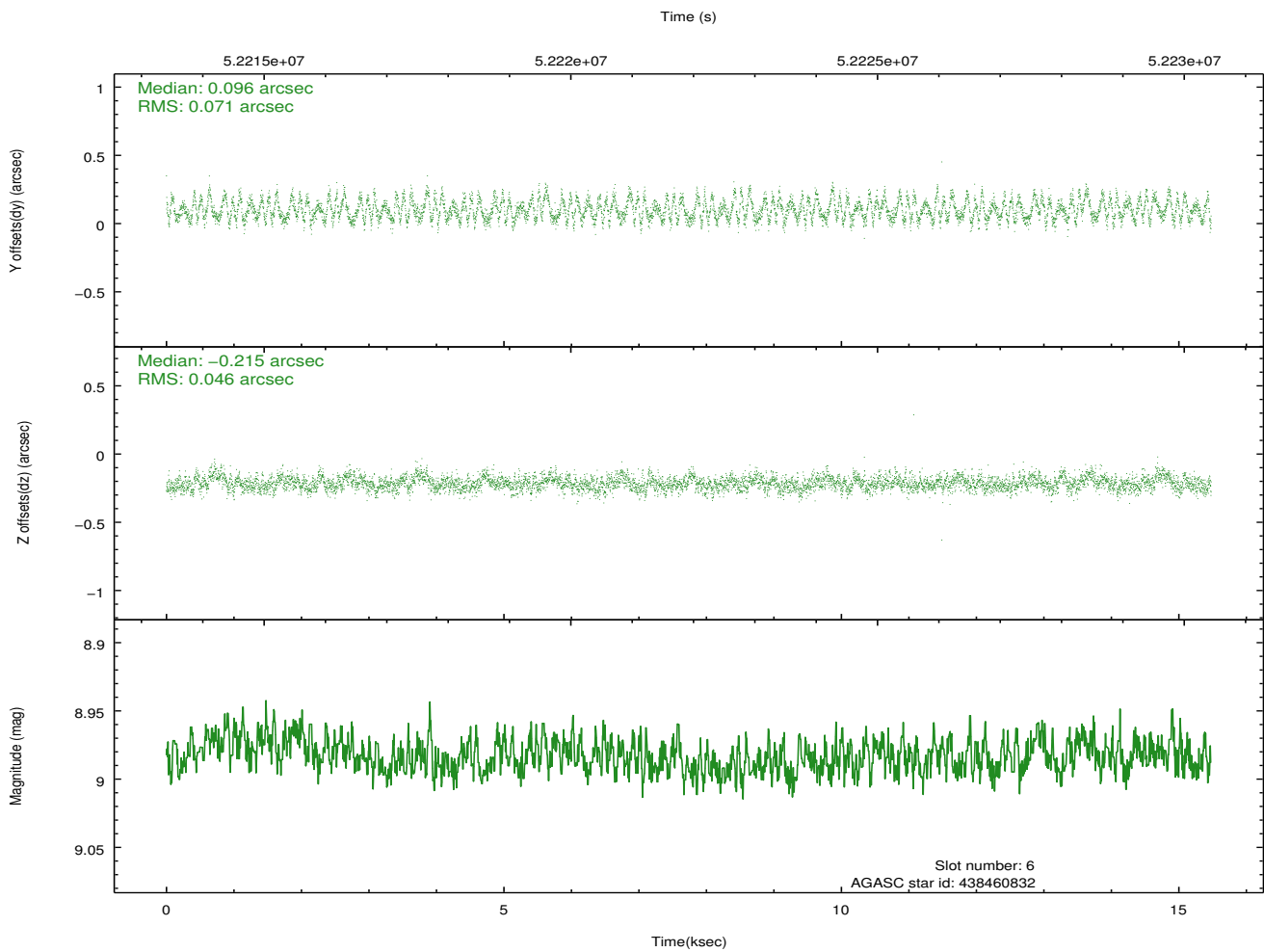
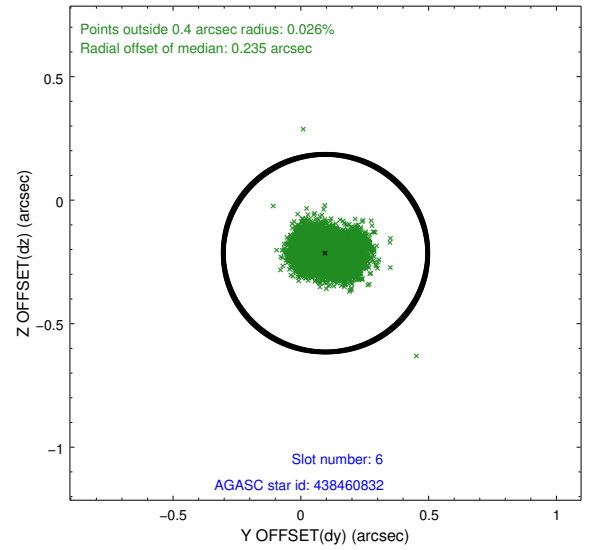
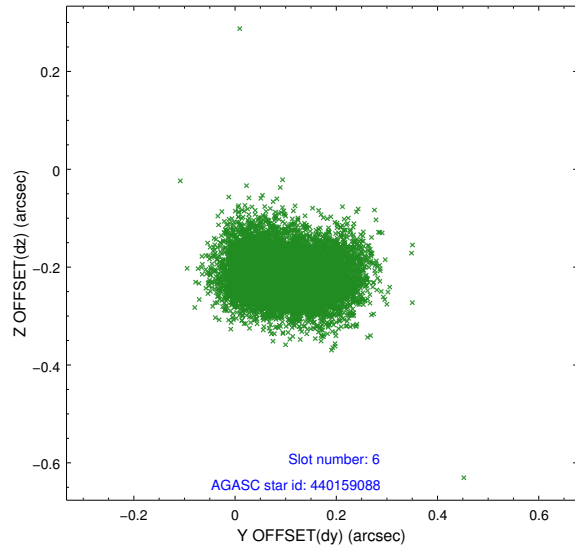
2.4.2 Slot 4



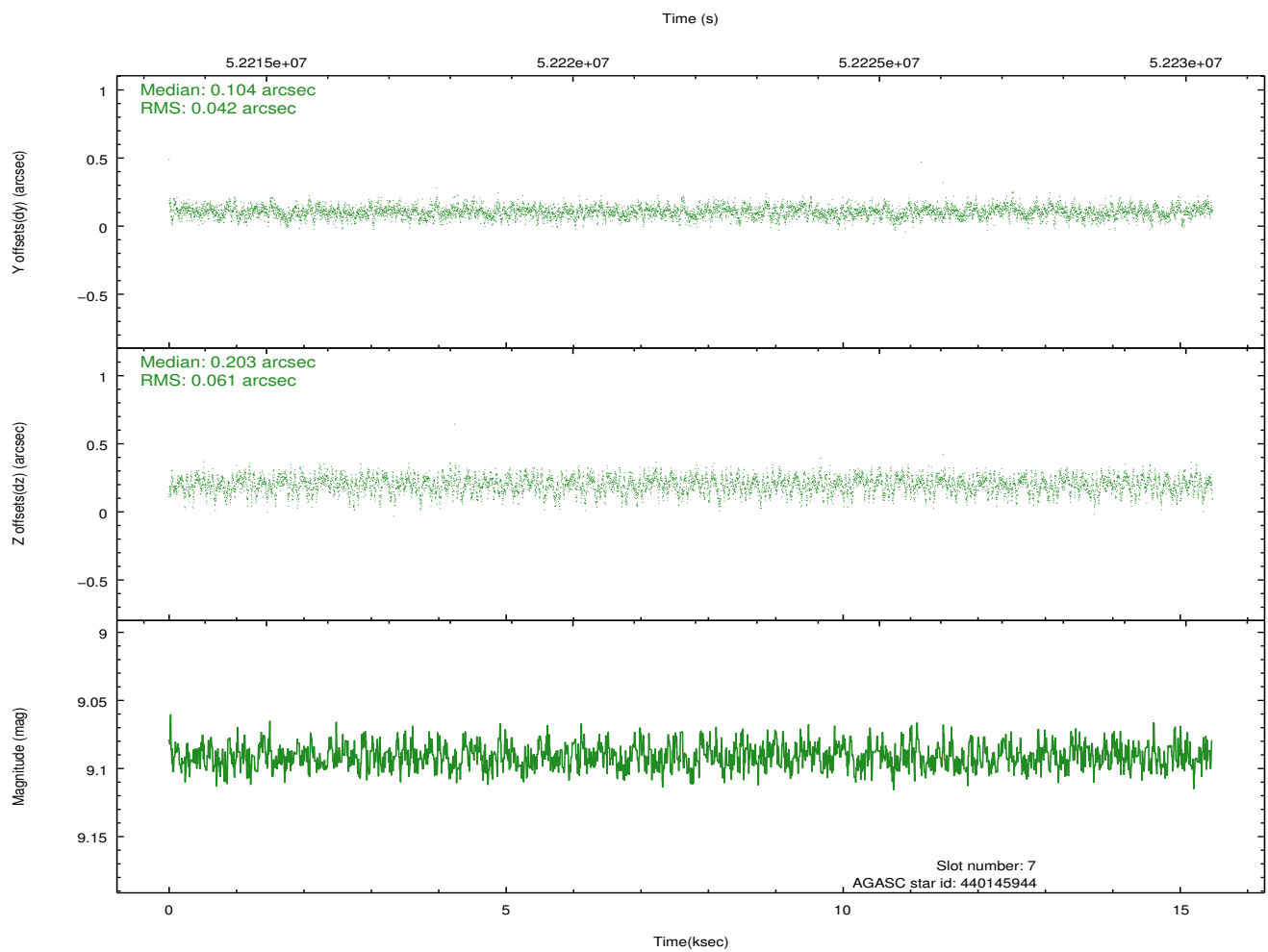
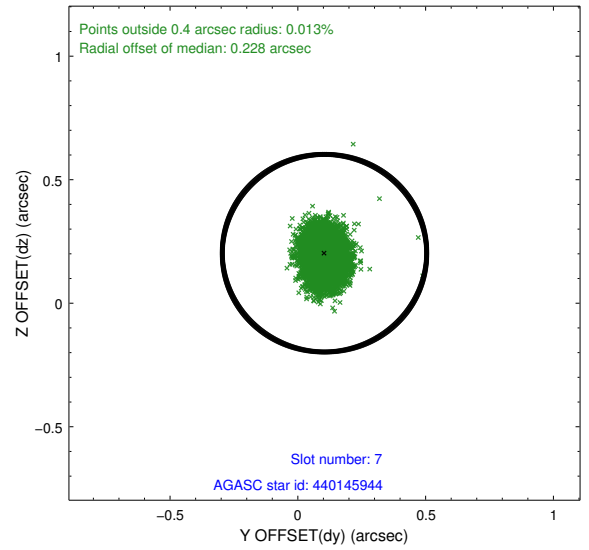
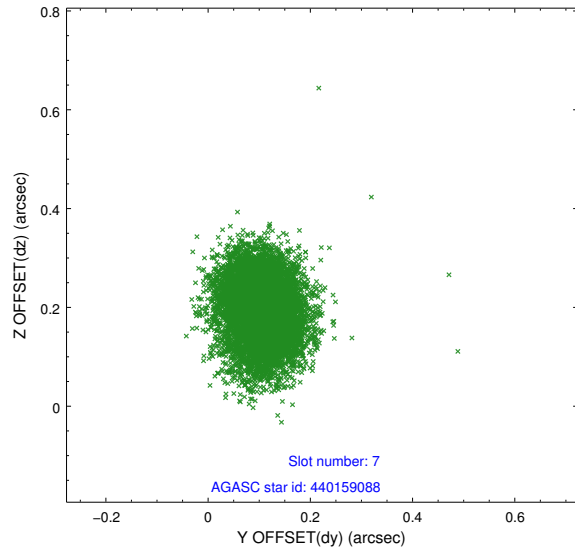
2.4.3 Slot 5



2.4.4 Slot 6

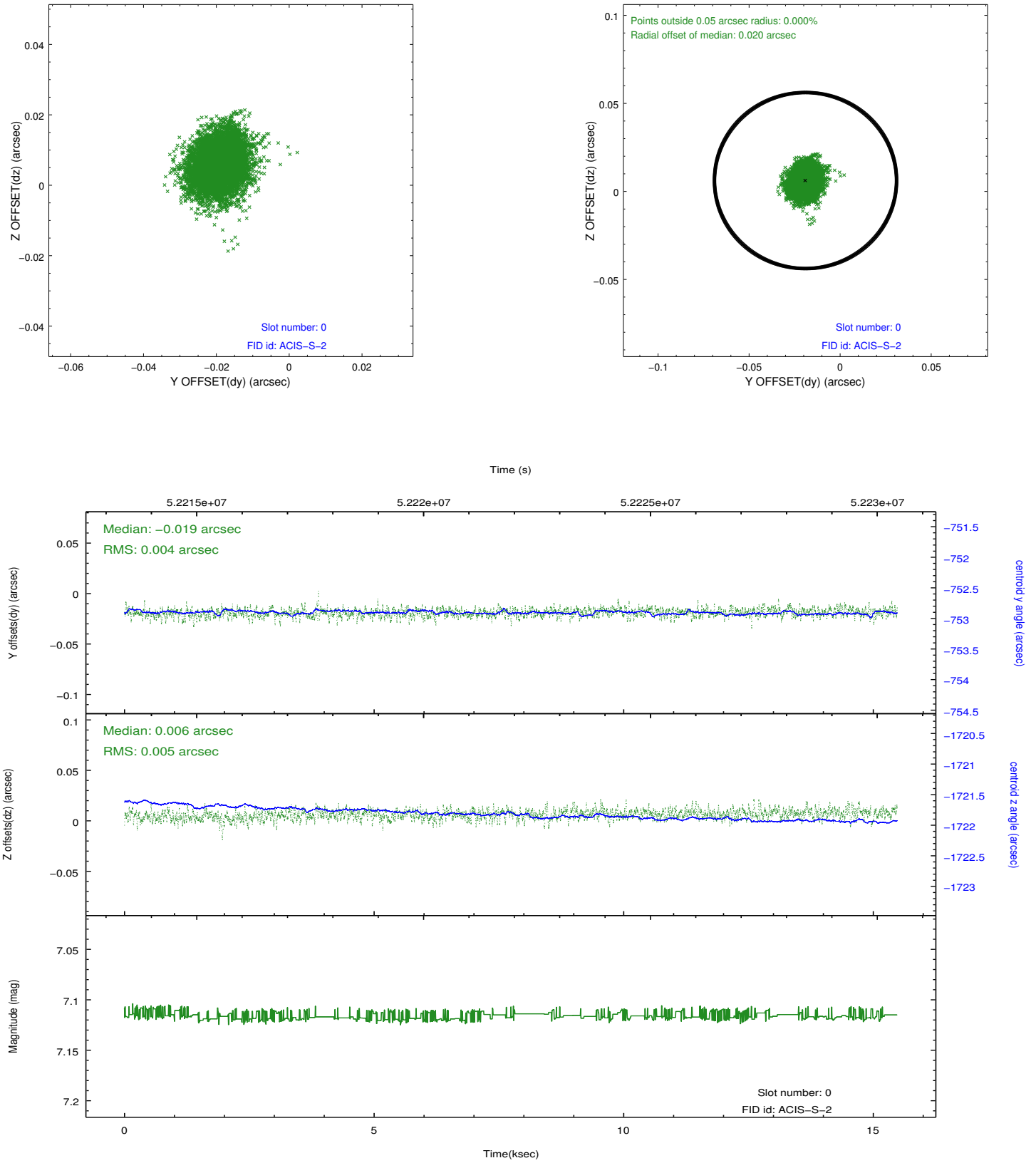


2.4.5 Slot 7

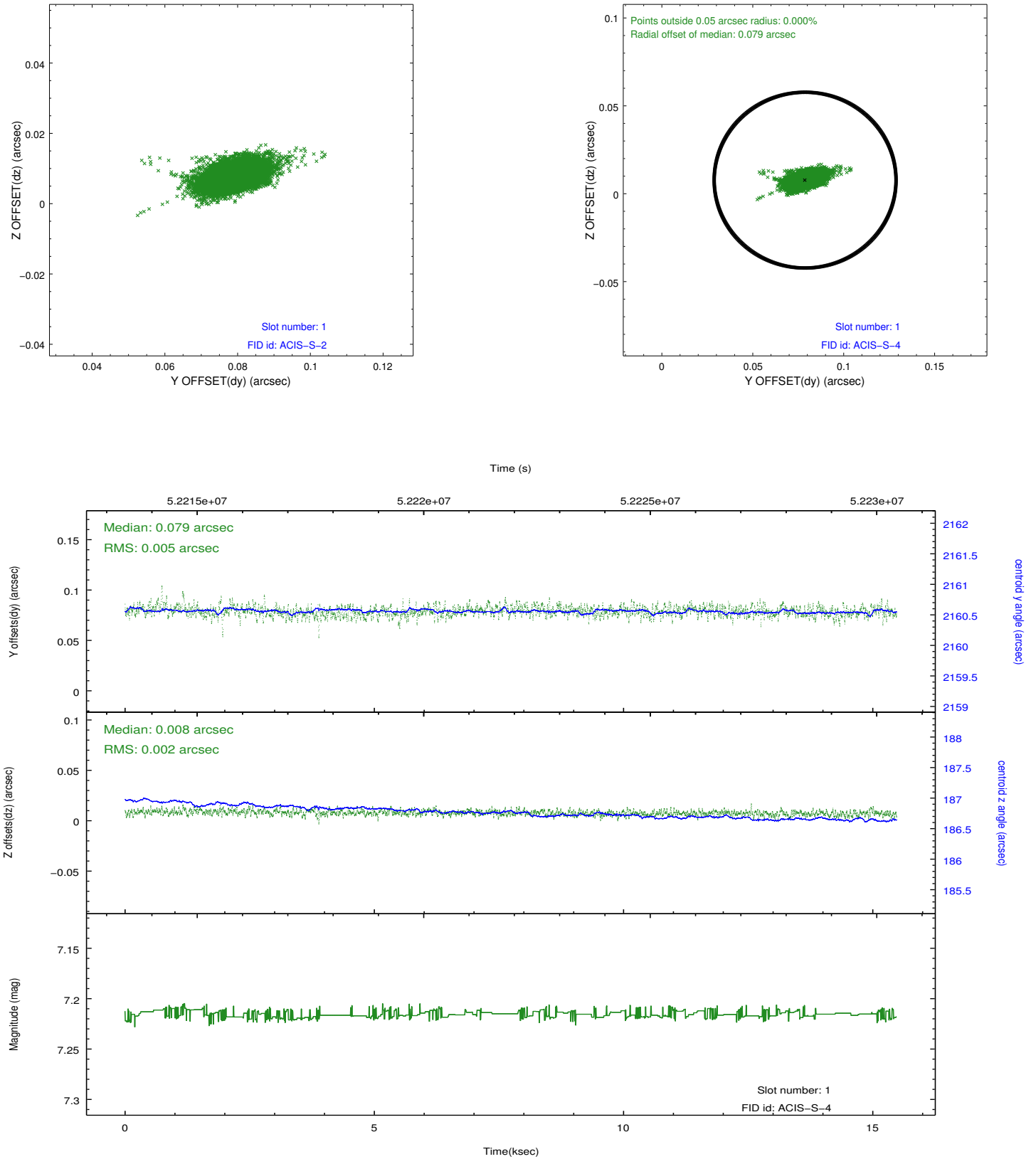


2.5 FID Slots

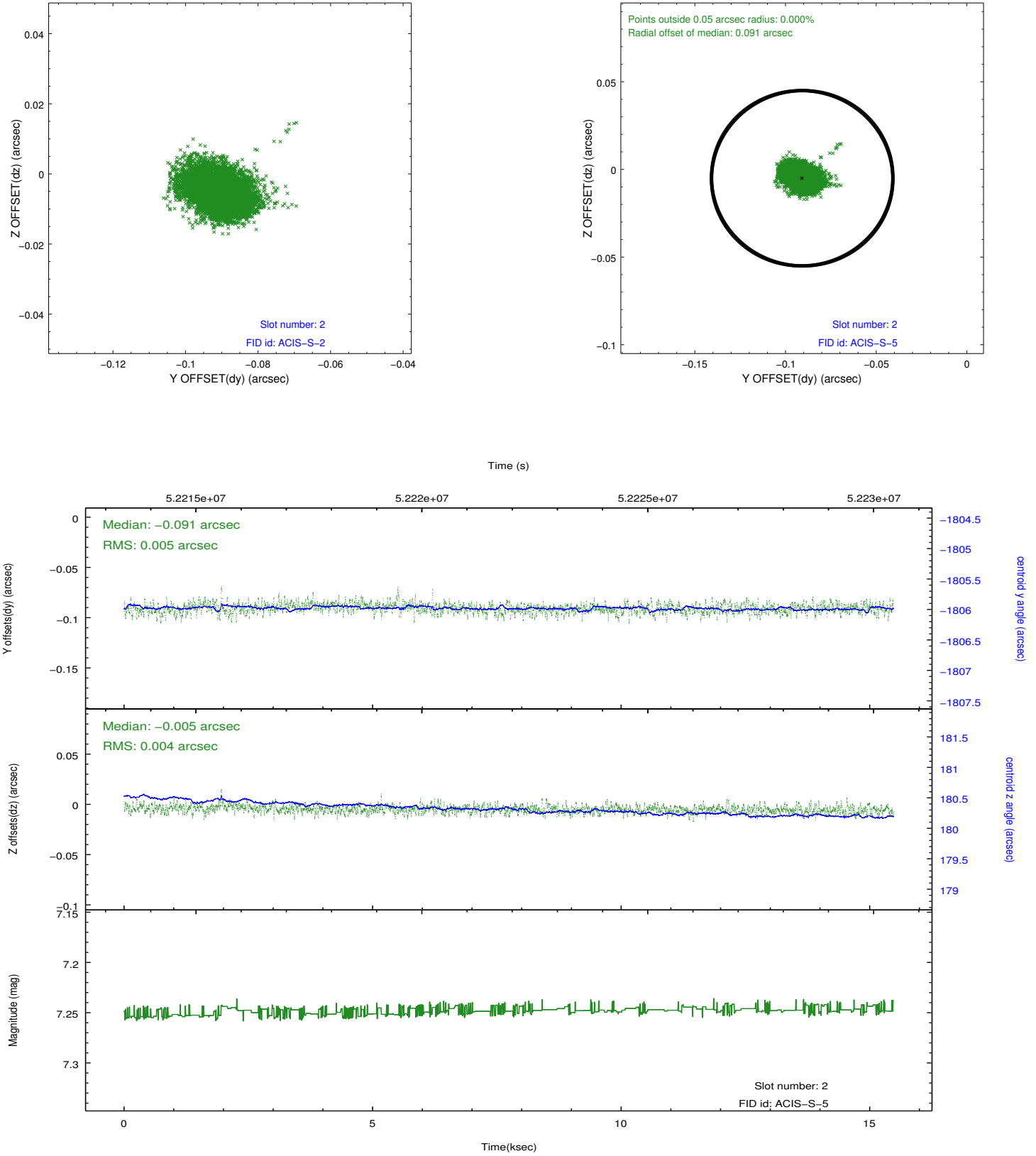
2.5.1 Slot 0



2.5.2 Slot 1

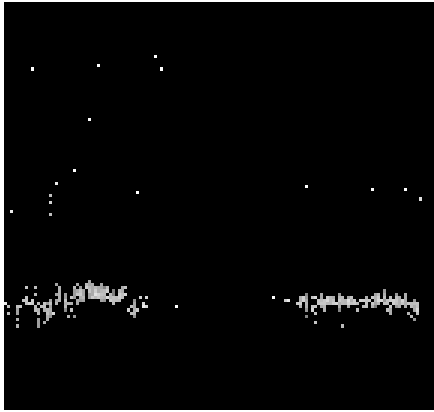


2.5.3 Slot 2

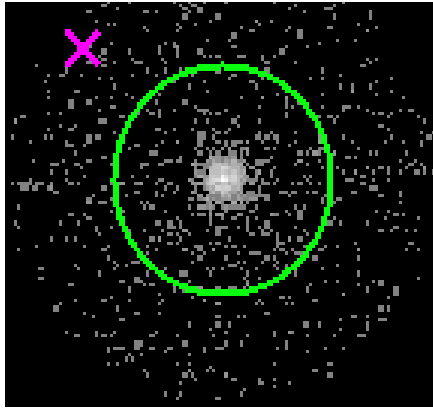


3 Gratings

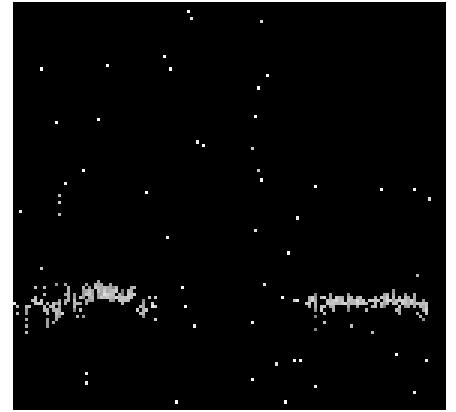
3.1 HEG Arm



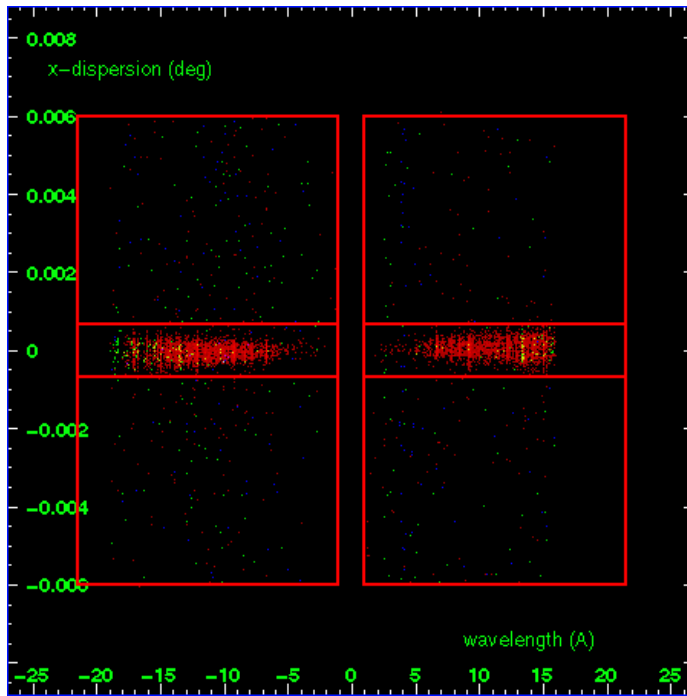
HEG Order Sort 123



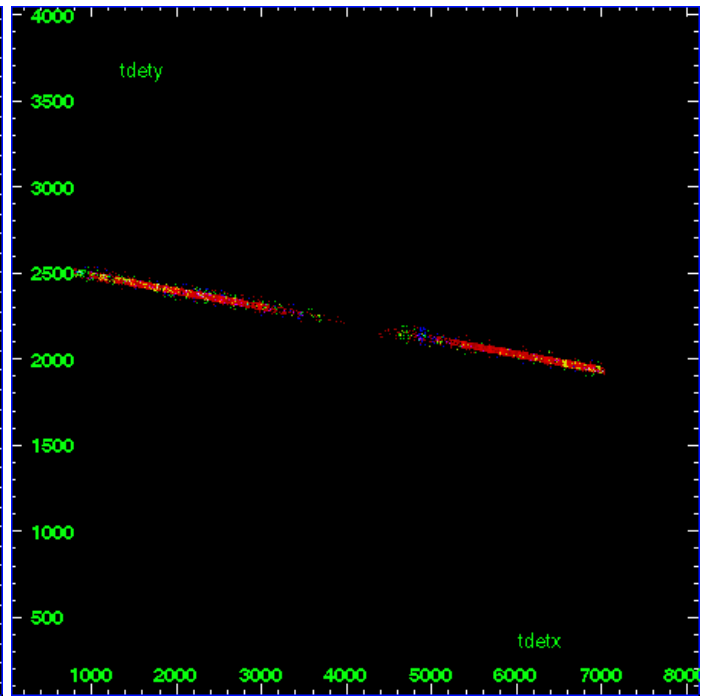
HEG Zero Order



HEG Order Sort ALL

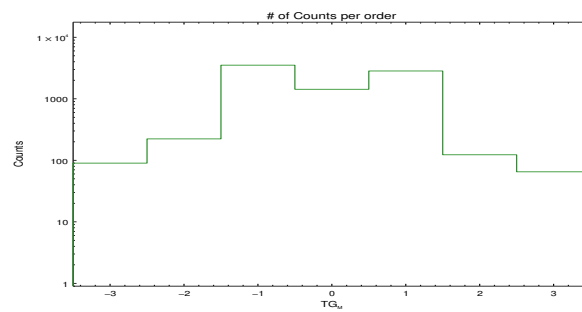


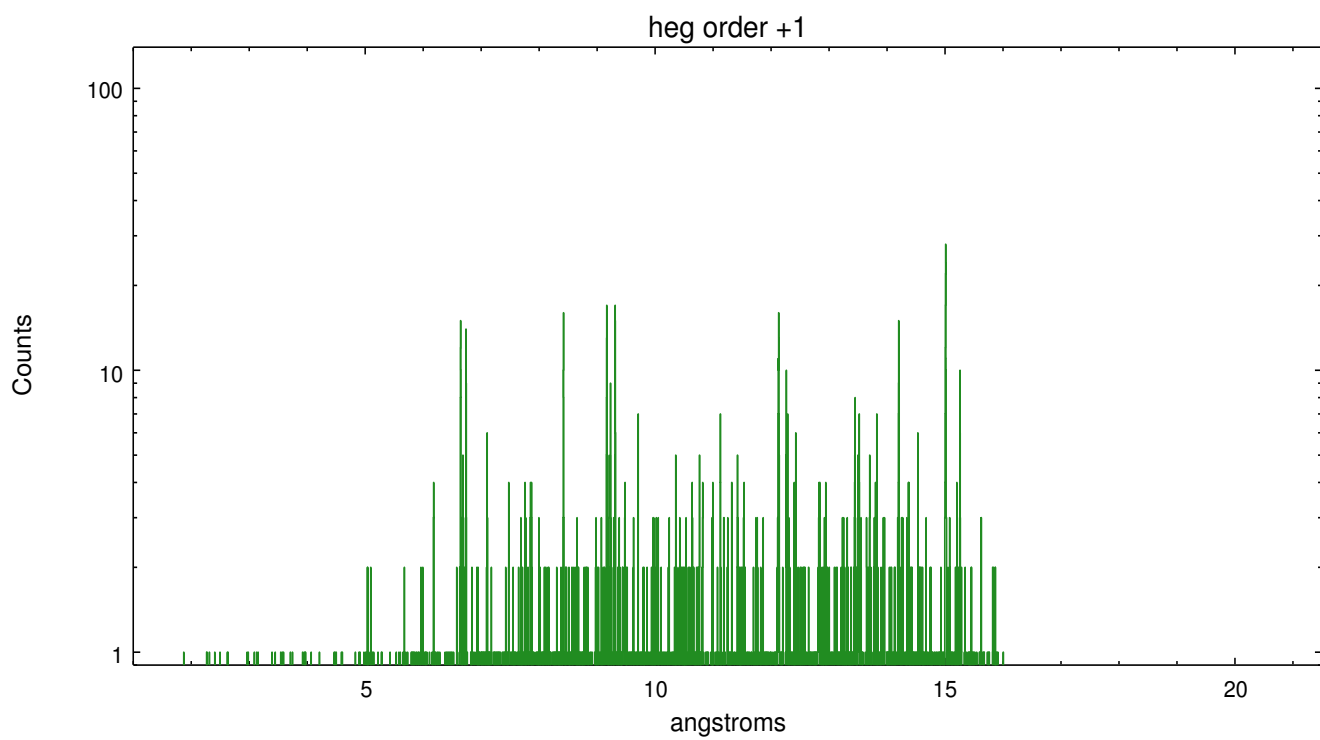
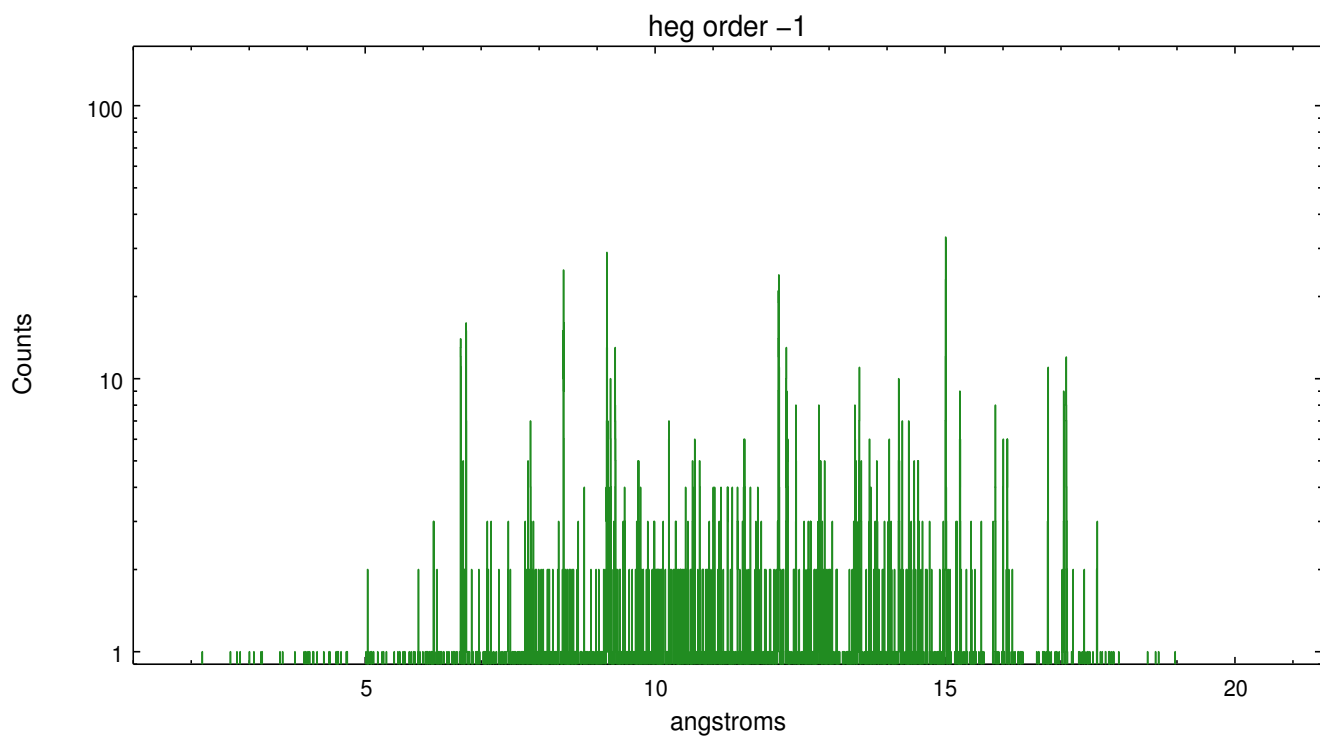
Spot Image HEG



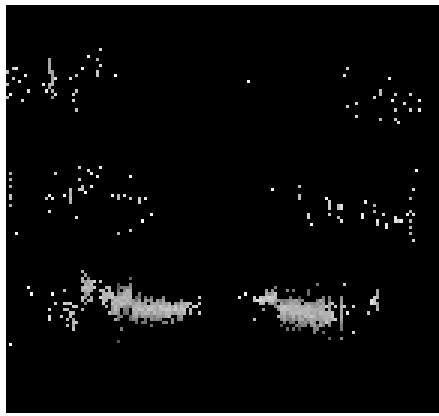
Full Detector HEG

	order -3	order -2	order -1	order 0	order 1	order 2	order 3
Events	90	223	3521	1428	2833	123	65

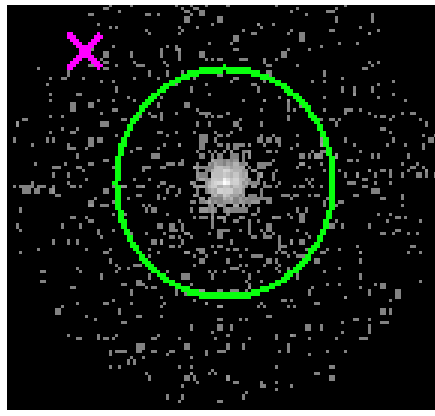




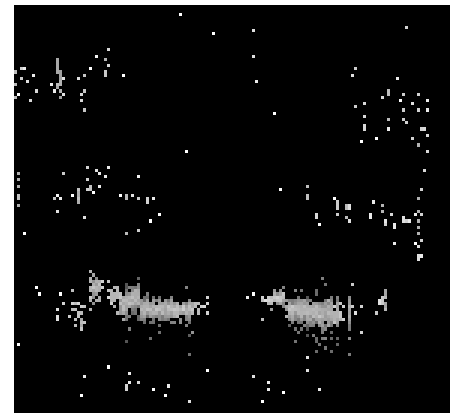
3.2 MEG Arm



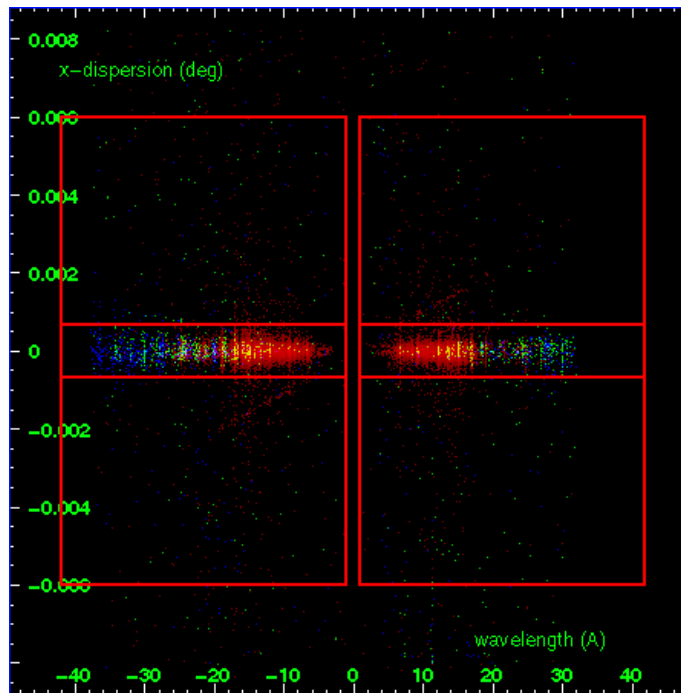
MEG Order Sort 123



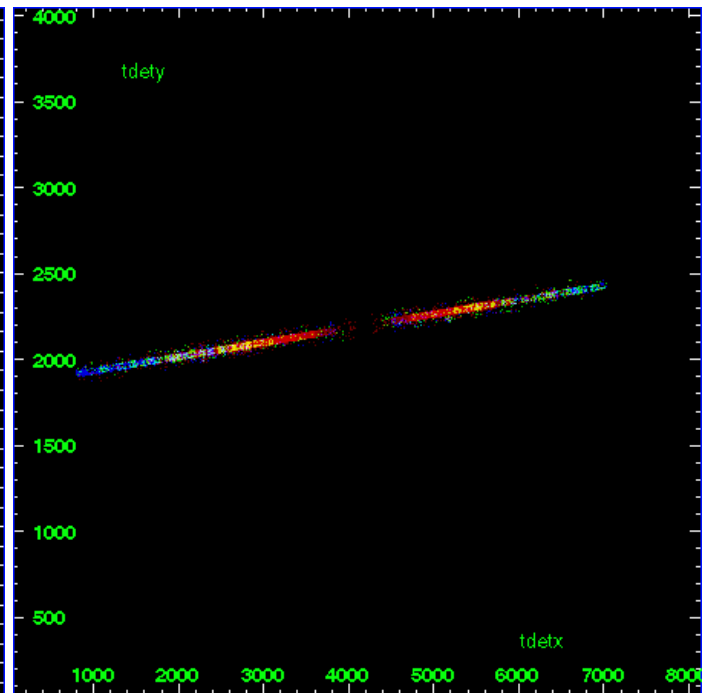
MEG Zero Order



MEG Order Sort ALL

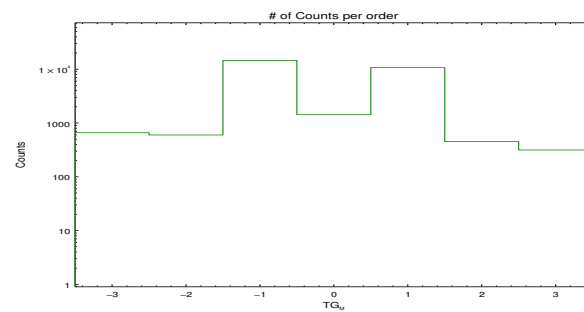


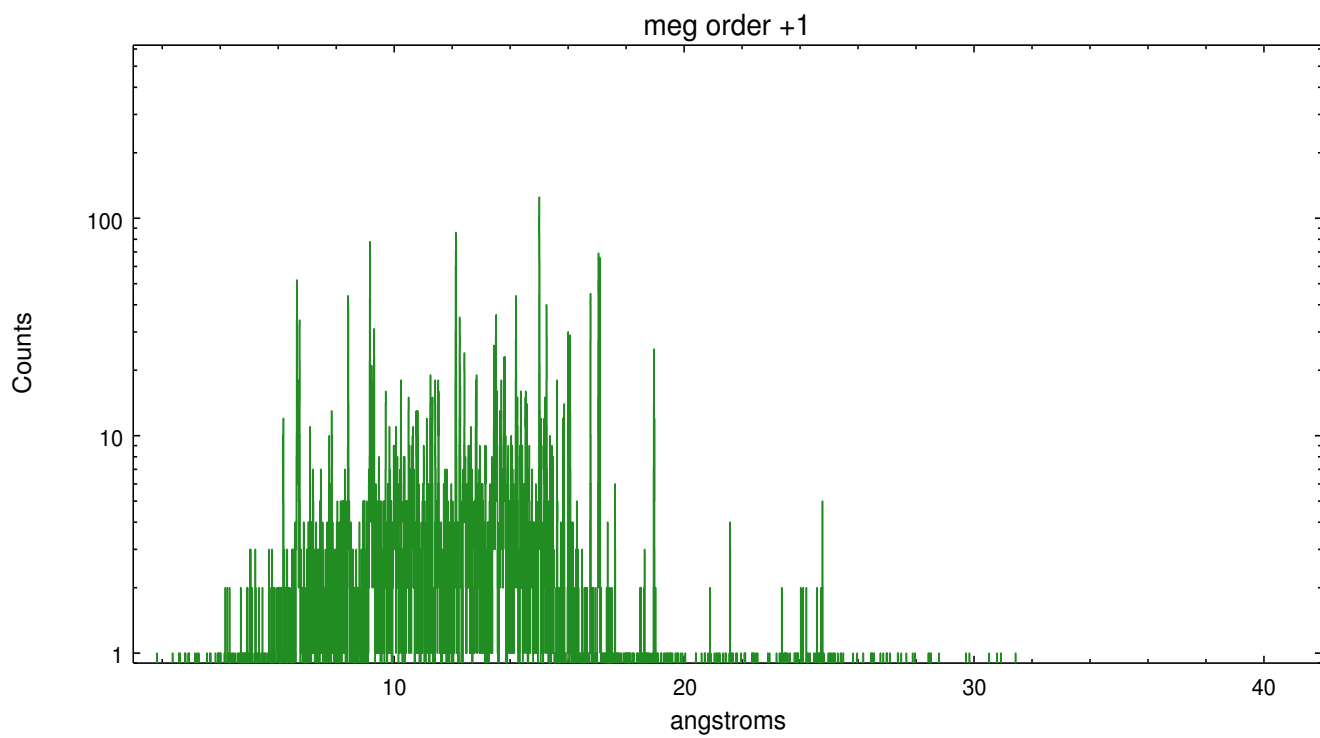
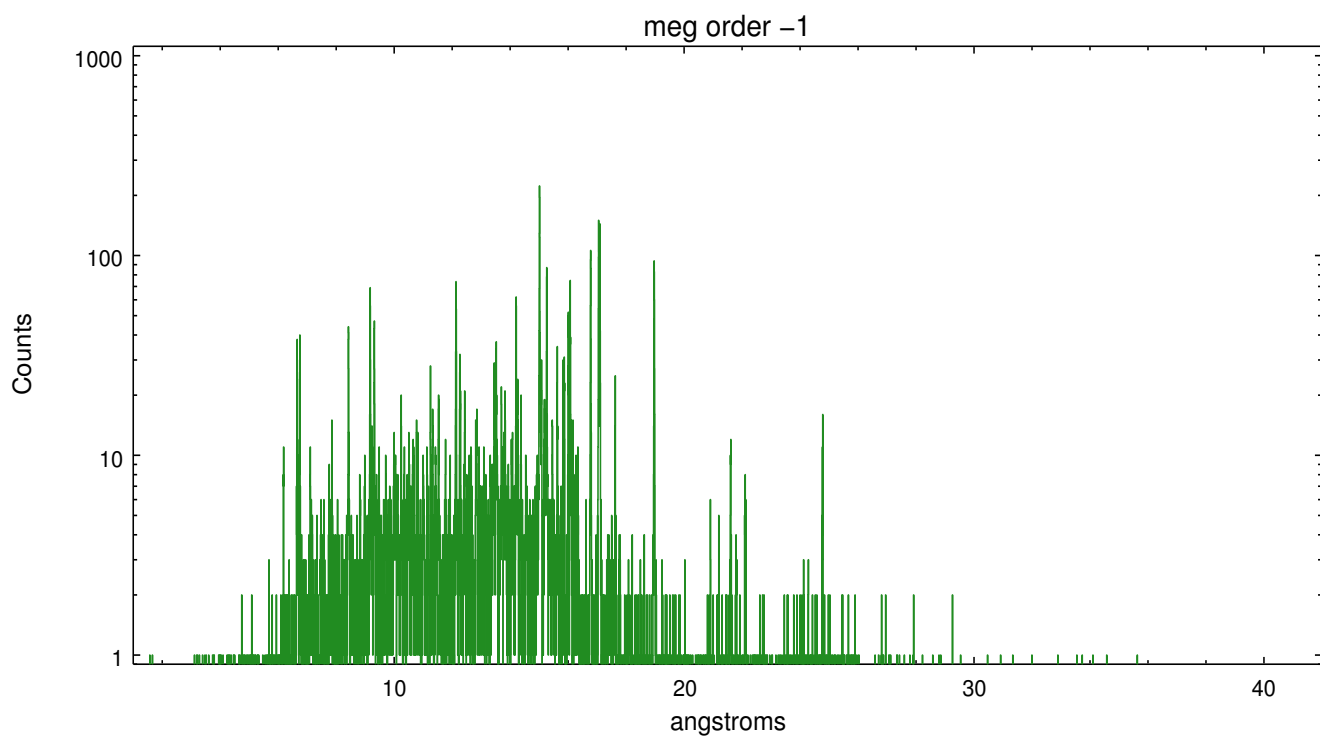
Spot Image MEG



Full Detector MEG

	order -3	order -2	order -1	order 0	order 1	order 2	order 3
Events	660	599	14594	1428	10710	451	315





A Summary

A.1 Status

V&V Scientist	David Huenemoerder
V&V Date (YYYY-MM-DD)	2010.03.26
V&V Edition	1
V&V Disposition and Status	OK
V&V Charge Time	14.752

A.2 Comments