

V&V Reference Report

L2 ASCDS Version : 8.4.5

Observation 11239 - L2 Version 2
Chandra X-Ray Center

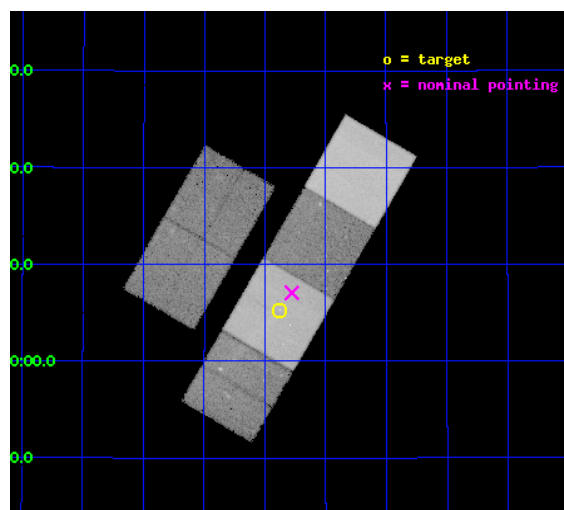
L2 Processing Date : Jun 15 2012

Contents

1	Front	2
2	OBI	3
2.1	OBI	3
2.1.1	Images	3
2.1.2	Bias	3
2.1.3	Parameters	4
2.1.4	Events	4
2.2	Compared Parameters	5
2.3	Aspect	6
2.4	Star Slots	9
2.4.1	Slot 3	9
2.4.2	Slot 4	10
2.4.3	Slot 5	11
2.4.4	Slot 6	12
2.4.5	Slot 7	13
2.5	FID Slots	14
2.5.1	Slot 0	14
2.5.2	Slot 1	15
2.5.3	Slot 2	16
A	Summary	17
A.1	Status	17
A.2	Comments	17

1 Front

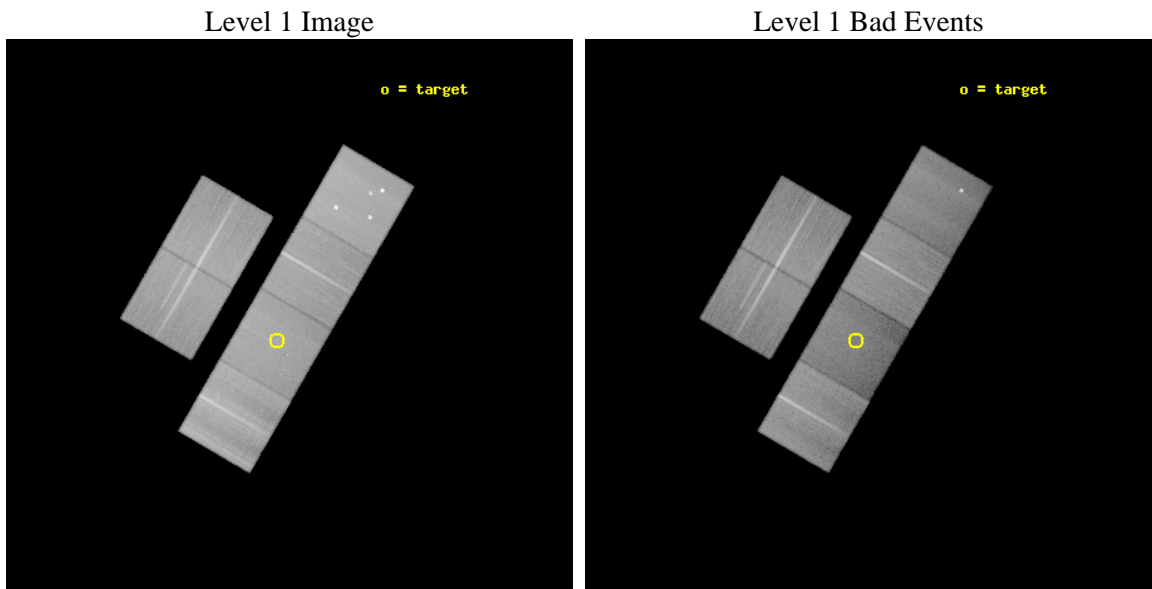
seq_num	501324	Sequence number
obs_id	11239	Observation id
title	A DEEP CHANDRA/NOAO INVESTIGATION TO IDENTIFY THE COUNTERPART OF AN OLD PULSAR DISCOVERED IN GAMMA-RAYS	Proposal title
observer	Dr. Andrea De Luca	Principal investigator
object	LAT PSR J0357+32	Source name
dtcycle	0	
cycle	P	events from which exps? Prim/Second/Both
ra_targ	59.469203	Observer's specified target RA [deg]
dec_targ	32.086771	Observer's specified target Dec [deg]
ra_nom	59.444470044788	Nominal RA [deg]
dec_nom	32.11791456471	Nominal Dec [deg]
roll_nom	120.17848883191	Nominal Roll [deg]
revision	2	Processing version of data
ontime	47113.326264977	Sum of GTIs [s]
livetime	46516.748959571	Livetime [s]
ontime2	47106.885244489	Sum of GTIs [s]
ontime3	47113.203144968	Sum of GTIs [s]
ontime5	47113.285224974	Sum of GTIs [s]
ontime6	47110.003164709	Sum of GTIs [s]
ontime7	47113.326264977	Sum of GTIs [s]
ontime8	47109.921064675	Sum of GTIs [s]
l2events	556927	Number of level 2 events



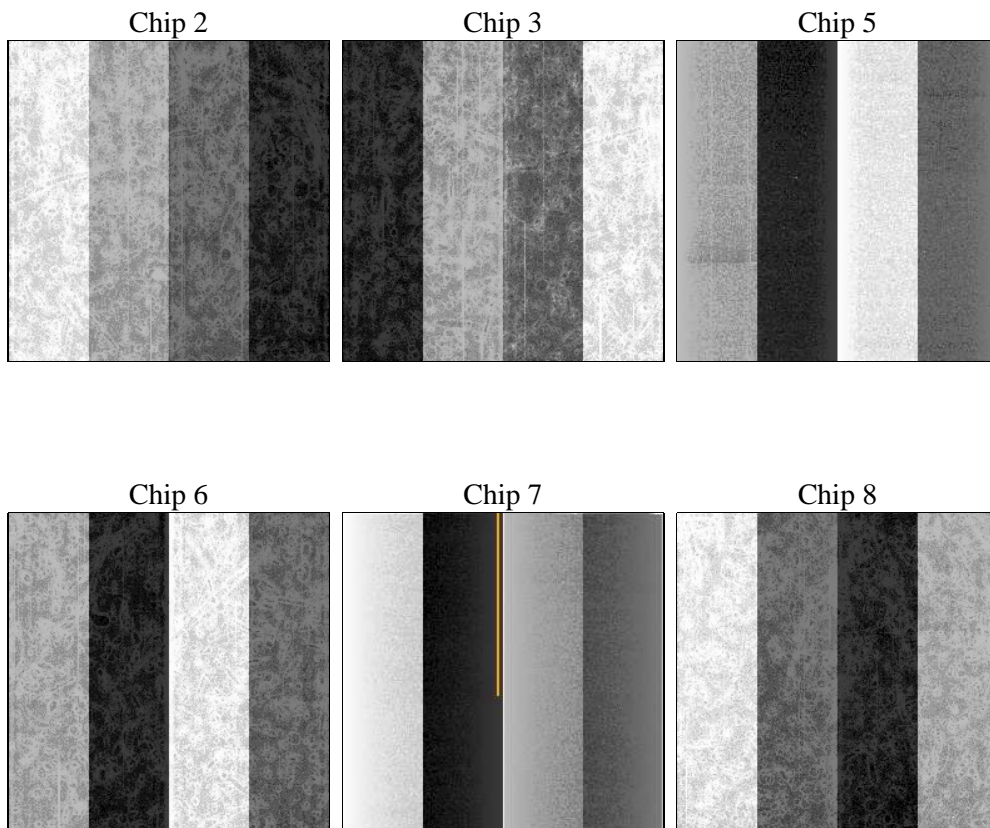
2 OBI

2.1 OBI

2.1.1 Images



2.1.2 Bias



2.1.3 Parameters

obi_num	0	Obi number	sched_exp_time	47000.000000	[s] Scheduled observation exposure time
ascdsver	8.4.5	Processing system revision	ontime	47113.326264977	Sum of GTIs [s]
caldbver	4.4.10	 	ontime2	47106.885244489	Sum of GTIs [s]
date	2012-06-15T03:38:21	Date and time of file creation	ontime3	47113.203144968	Sum of GTIs [s]
revision	2	Processing version of data	ontime5	47113.285224974	Sum of GTIs [s]
			ontime6	47110.003164709	Sum of GTIs [s]
			ontime7	47113.326264977	Sum of GTIs [s]
			ontime8	47109.921064675	Sum of GTIs [s]
			l1events	2528109	Number of level 1 events

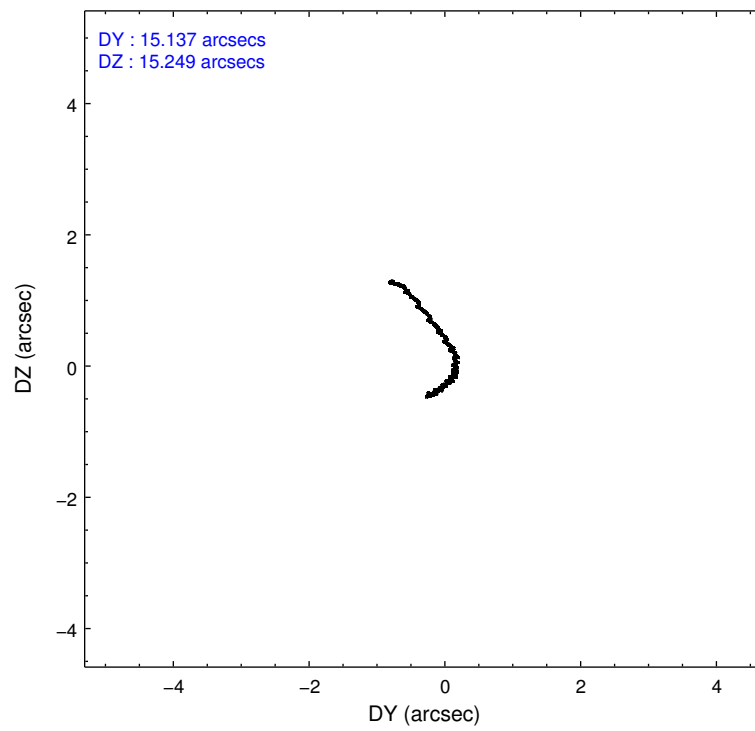
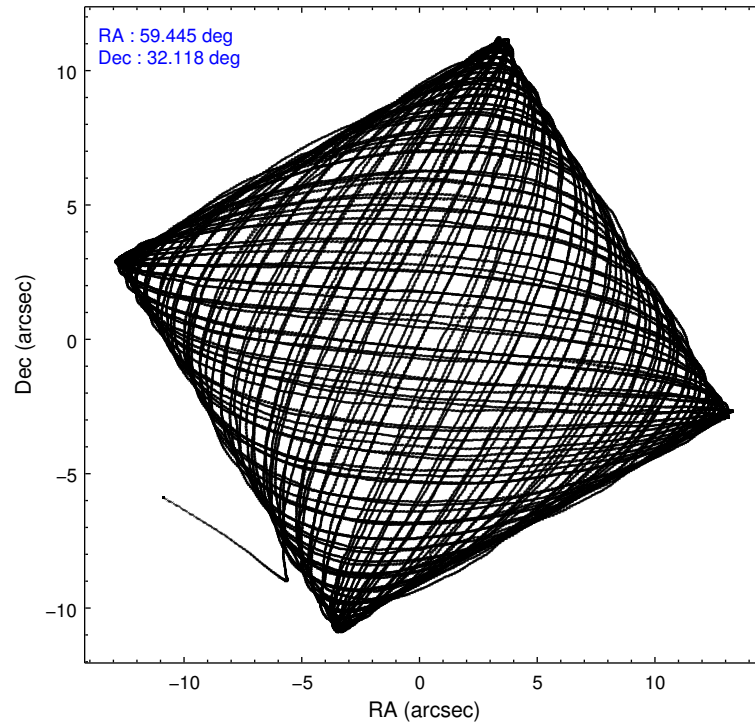
2.1.4 Events

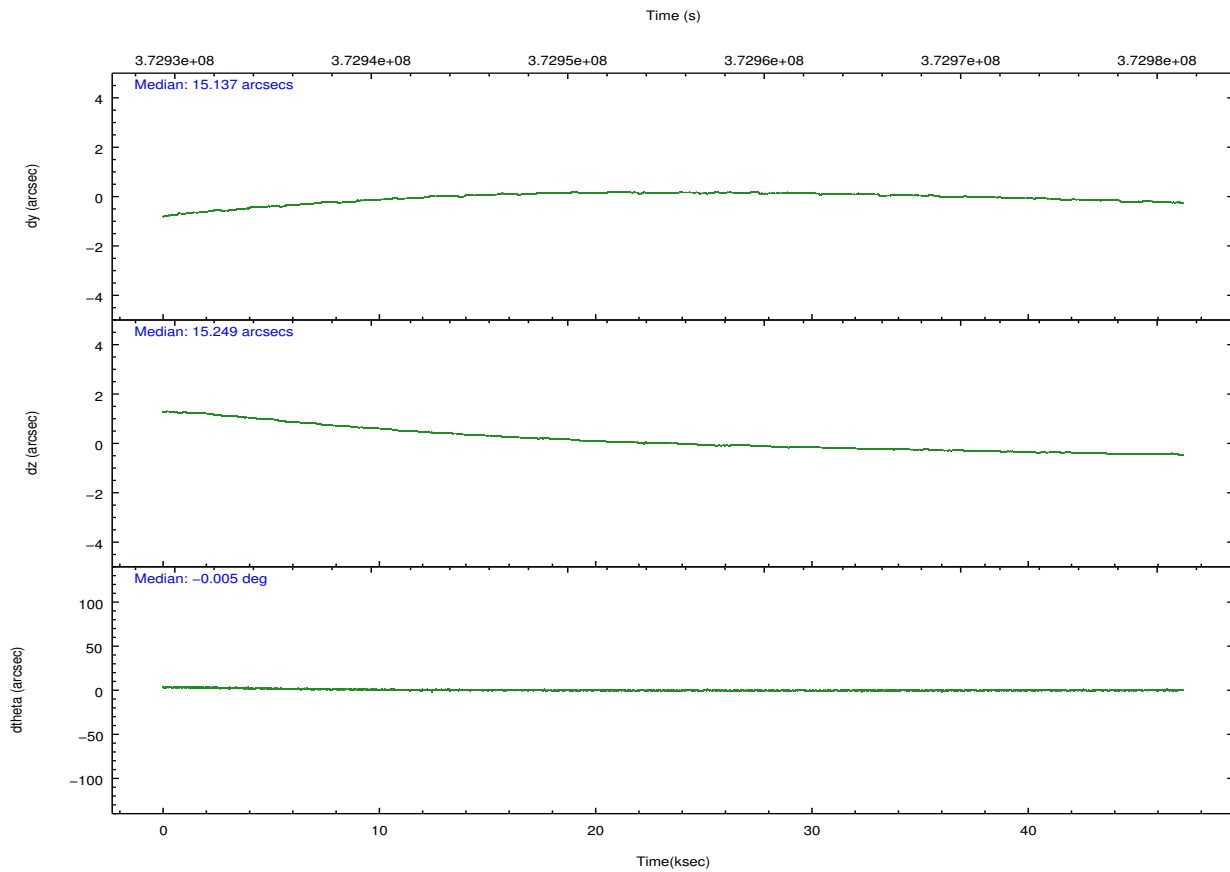
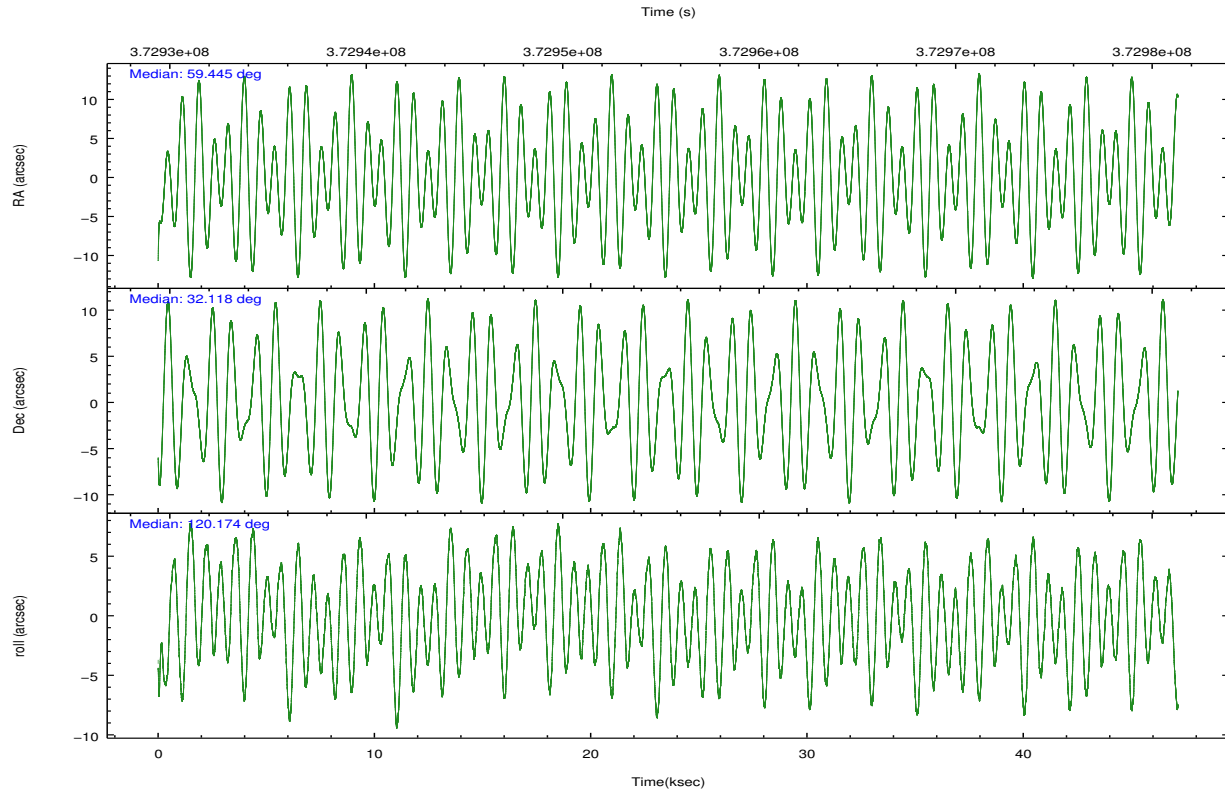
	ccd 2	ccd 3	ccd 5	ccd 6	ccd 7	ccd 8		ccd 2	ccd 3	ccd 5	ccd 6	ccd 7	ccd 8
level 1 events	401508	372769	516747	383779	377354	475952	grade 0 events	13752	12966	42327	14866	18808	36215
rejected events	364253	337641	237706	343806	191985	350206		3%	3%	8%	3%	4%	7%
rejected %	90%	90%	46%	89%	50%	73%	grade 1 events	271	221	1189	213	599	409
								0%	0%	0%	0%	0%	0%
							grade 2 events	9180	7646	83623	8935	39760	30039
								2%	2%	16%	2%	10%	6%
							grade 3 events	3827	3992	10793	4181	17024	13525
								0%	1%	2%	1%	4%	2%
							grade 4 events	3898	3836	10328	3966	16932	12320
								0%	1%	1%	1%	4%	2%
							grade 5 events	11219	13260	39336	13223	40032	20437
								2%	3%	7%	3%	10%	4%
							grade 6 events	6600	6695	131988	8027	92858	33686
								1%	1%	25%	2%	24%	7%
							grade 7 events	352761	324153	197163	330368	151341	329321
								87%	86%	38%	86%	40%	69%

2.2 Compared Parameters

Parameter	Planned	Actual	Parameter	Planned	Actual
Instrument	ACIS	ACIS	Obspar format version number	7	7
Detector	ACIS-235678	ACIS-235678	Obspar file type	PREDICTED	ACTUAL
Grating	NONE	NONE	Obspar update status	NONE	UPDATED
Data mode	VFAINT	VFAINT	CCD I0 on	N	N
Observation mode	POINTING	POINTING	CCD I1 on	N	N
[deg] Pointing RA	59.472689	59.44447004478817	CCD I2 on	Y	Y
[deg] Pointing Dec	32.104639	32.11791456470986	CCD I3 on	Y	Y
[deg] Pointing Roll	120.006856	120.1784888319108	CCD S0 on	N	N
[mm] SIM focus pos	-0.684267	-0.6828225247311905	CCD S1 on	Y	Y
[mm] SIM defocus	0	0.001444936568705701	CCD S2 on	Y	Y
[mm] SIM translation stage pos	-190.132523	-190.1400660498719	CCD S3 on	Y	Y
[mm] SIM translation stage offset	0	0.00754346686406393	CCD S4 on	O1	Y
[s] Observation start time (MET)	372931928.184000	372930884.94608	CCD S5 on	N	N
Observation start date	2009-10-26T08:11:02	2009-10-26T07:54:44	Number of optional ACIS chips dropped	0	0
[s] Observation end time (MET)	372978928.184000	372979583.21103	On-chip summing requested	N	N
Observation end date	2009-10-26T21:14:22	2009-10-26T21:26:23	Subarray requested	NONE	NONE
Read mode	TIMED	TIMED	Alternating exposures requested	N	N
			[s] Primary exposure time	0.000000	3.2

2.3 Aspect



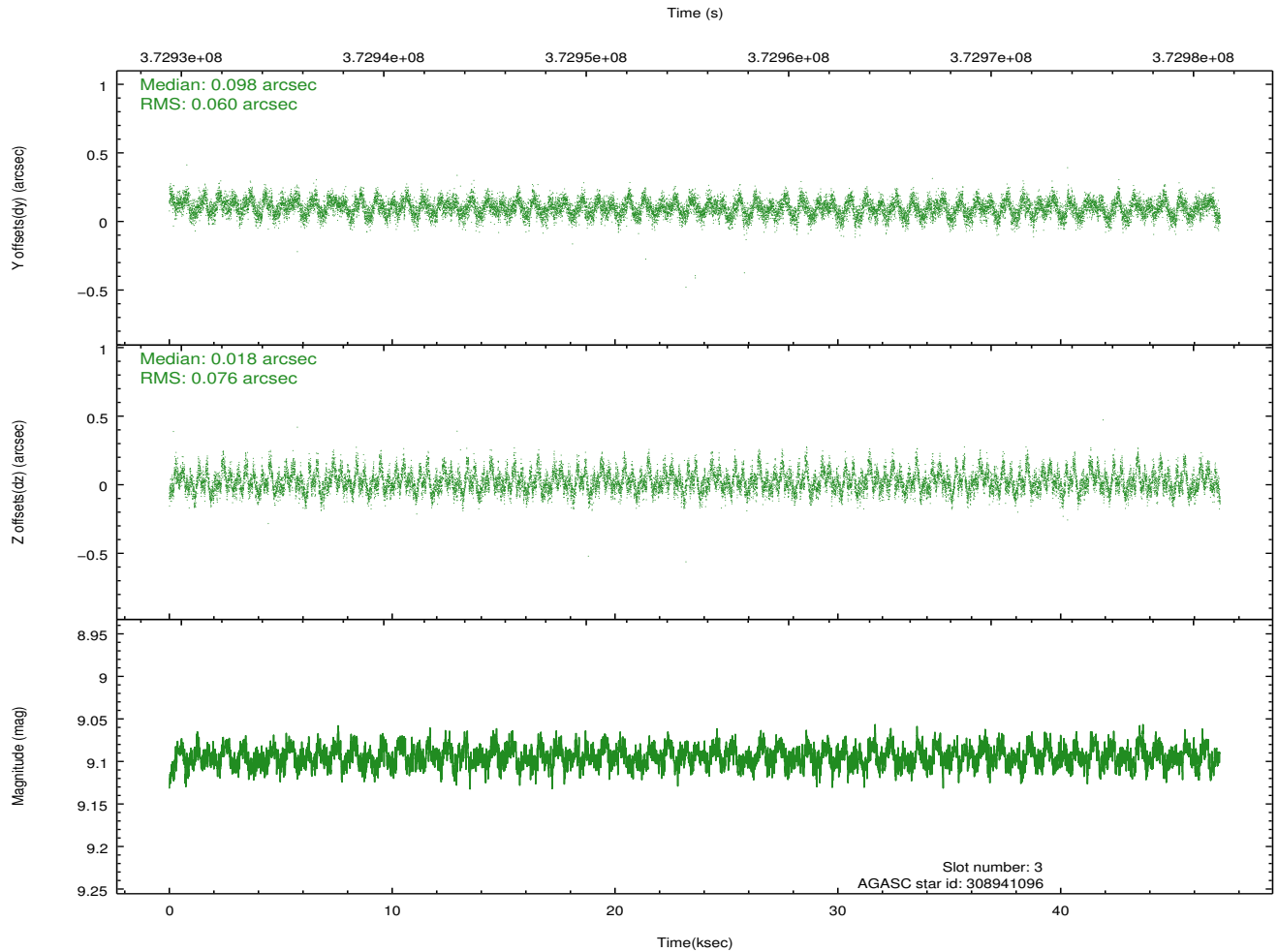
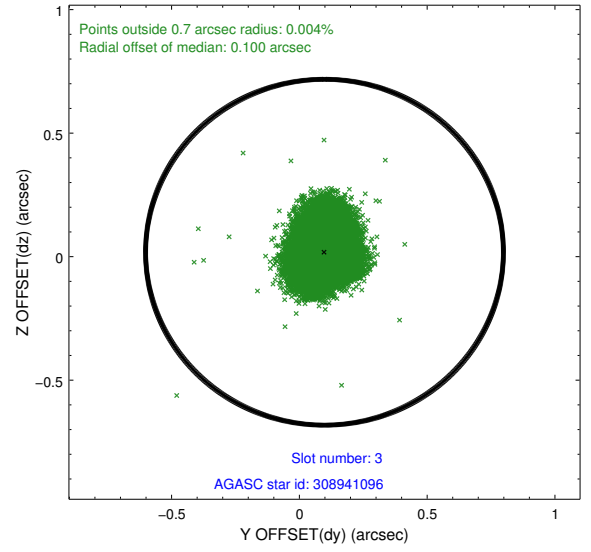
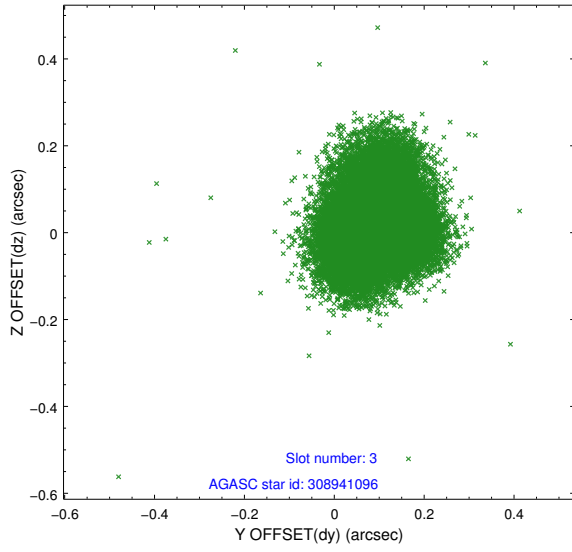


Slot Statistics

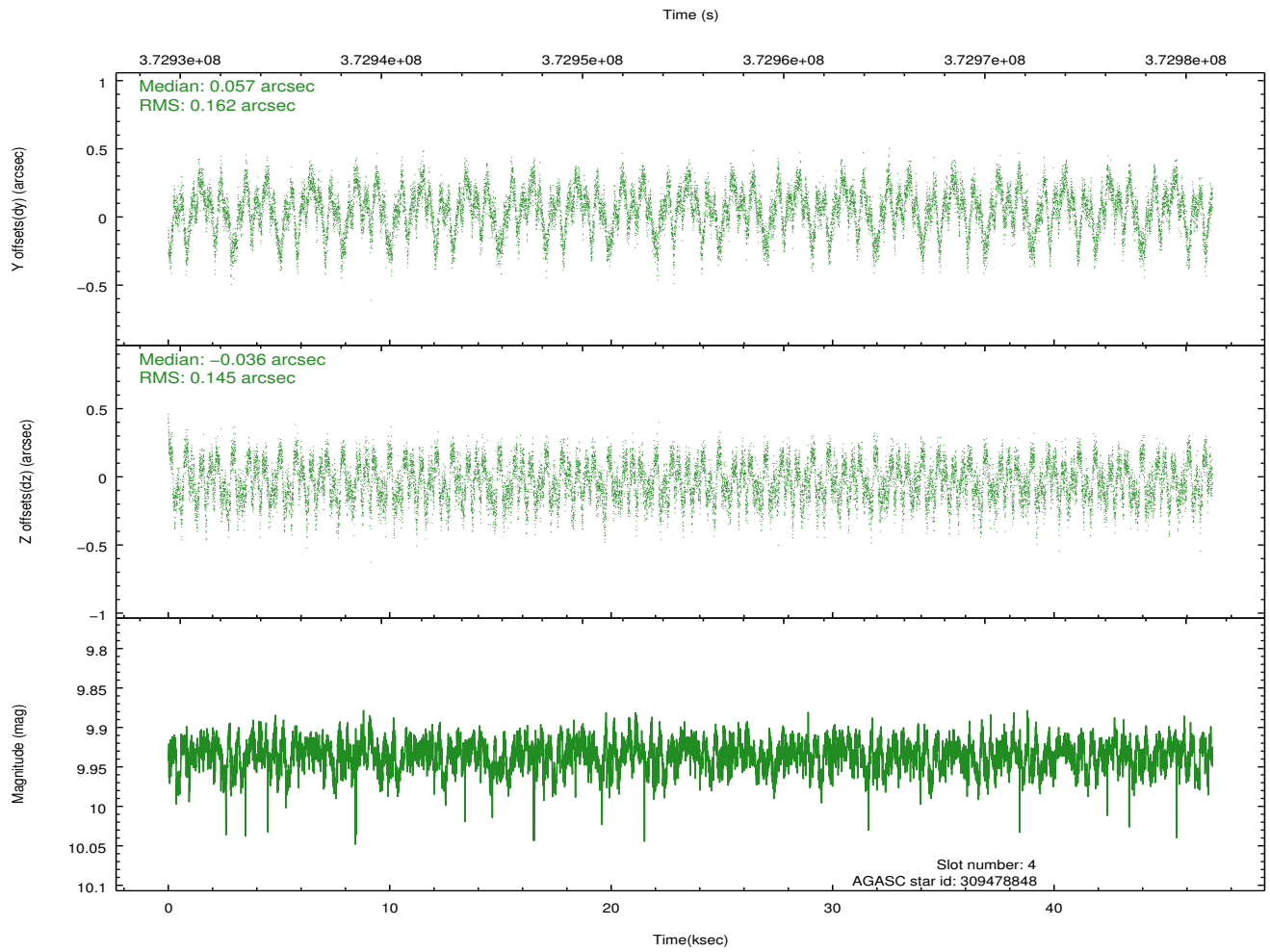
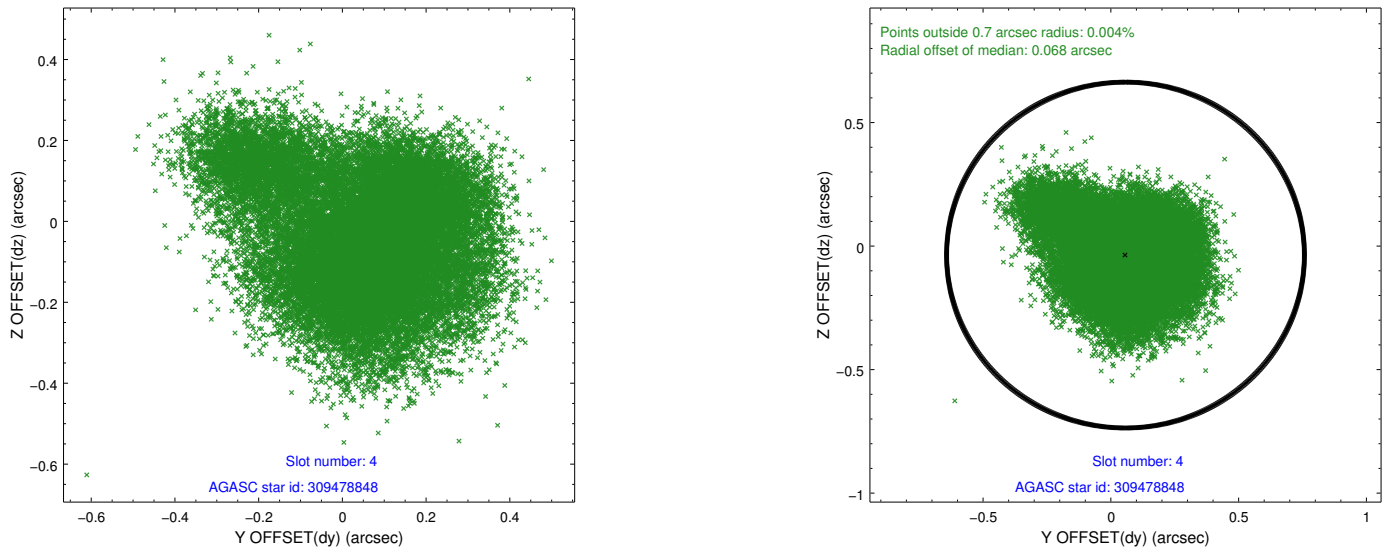
slot	status	id	mag	n_pts	med_dy	med_dz	dr1	dr2	ra	dec	mean_y	mean_z
0	FID	ACIS-S-2	6.91	11499	-0.098	-0.023	0.011	0.031	0.000000	0.000000	-768.13	-1736.81
1	FID	ACIS-S-4	6.99	11497	0.207	0.054	0.009	0.019	0.000000	0.000000	2145.44	171.77
2	FID	ACIS-S-5	7.02	11500	-0.142	-0.021	0.009	0.024	0.000000	0.000000	-1821.05	165.33
3	GUIDE	308941096	9.09	22984	0.098	0.018	0.103	0.165	60.003174	31.773983	-1838.90	-812.55
4	GUIDE	309478848	9.93	22775	0.057	-0.036	0.234	0.372	59.804101	32.712833	1395.78	-1964.86
5	GUIDE	309478928	8.95	22978	-0.073	0.054	0.082	0.137	59.464096	32.635124	1667.28	-932.17
6	GUIDE	309482592	9.70	22949	-0.080	-0.021	0.155	0.266	59.746979	32.370622	413.51	-1201.39
7	GUIDE	309482648	8.33	22994	0.015	-0.011	0.110	0.181	59.776021	32.011778	-751.11	-635.27

2.4 Star Slots

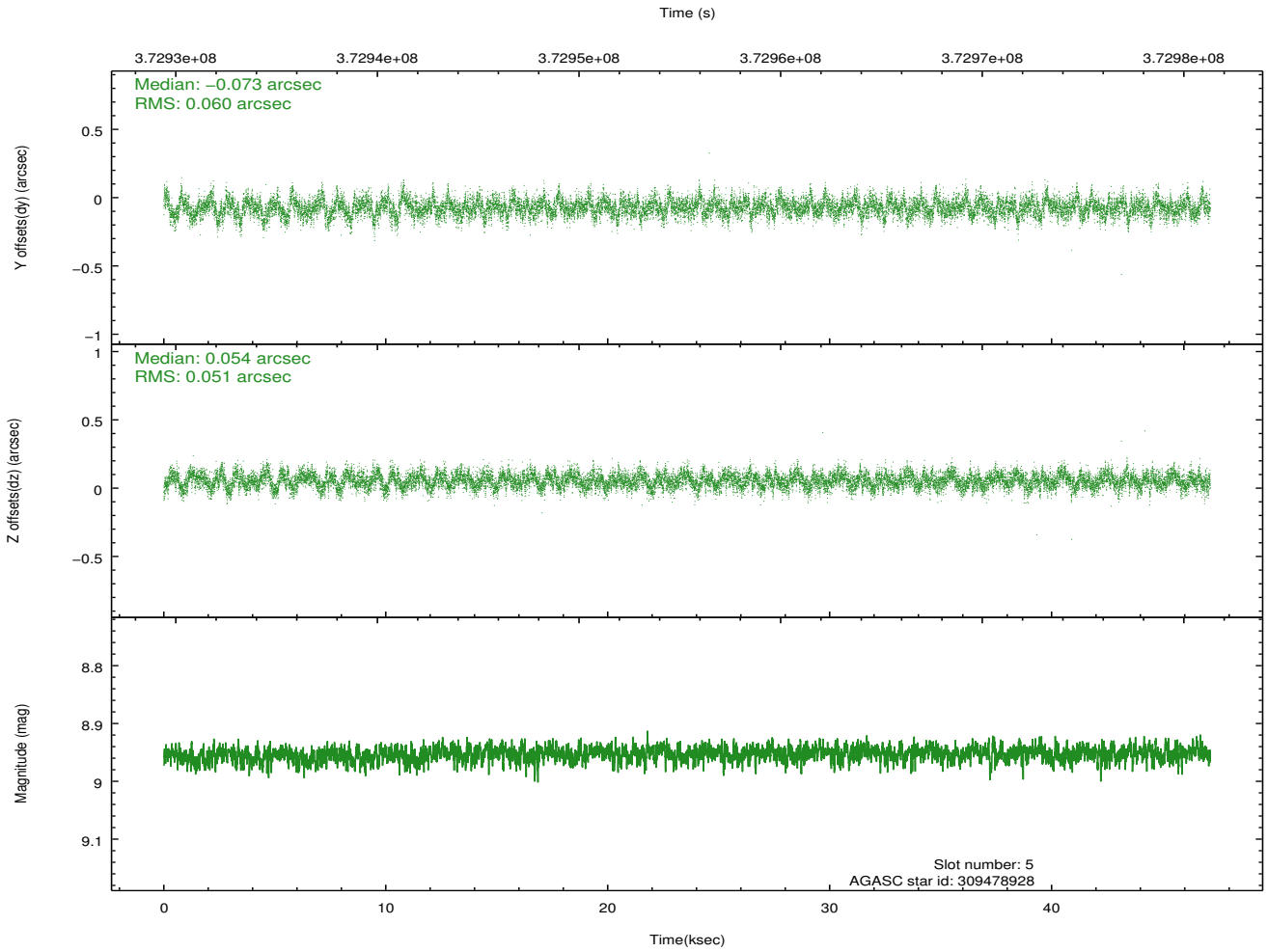
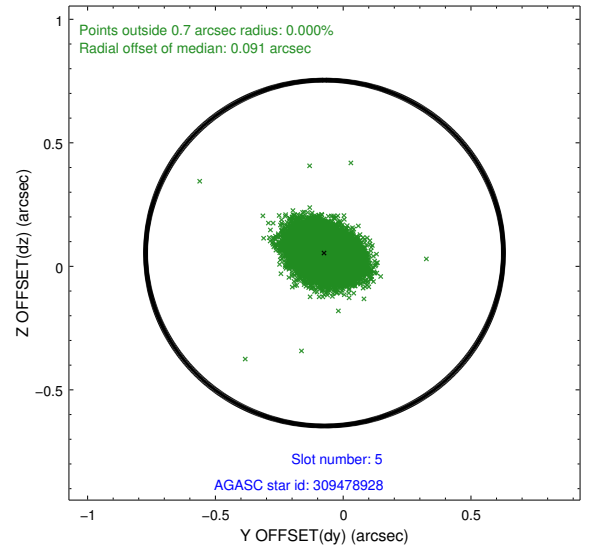
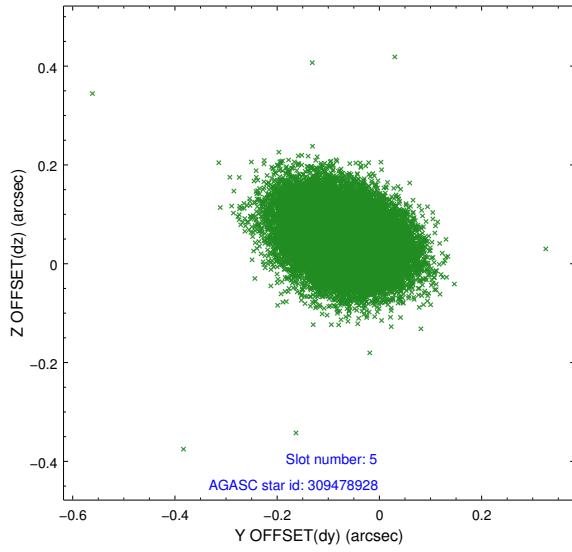
2.4.1 Slot 3



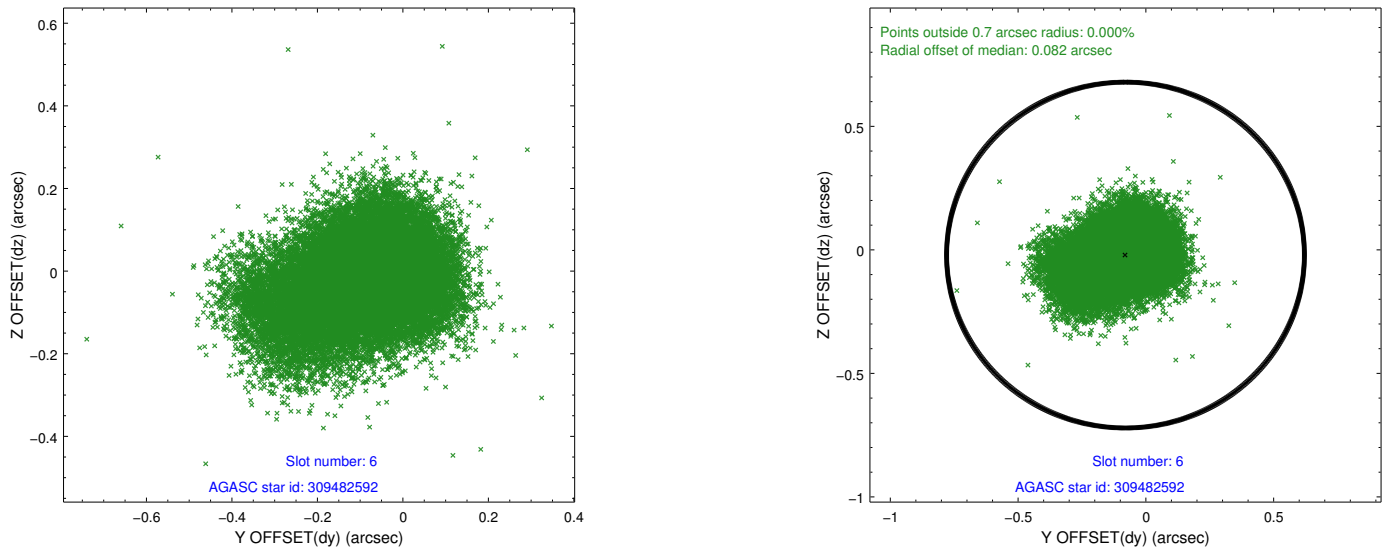
2.4.2 Slot 4



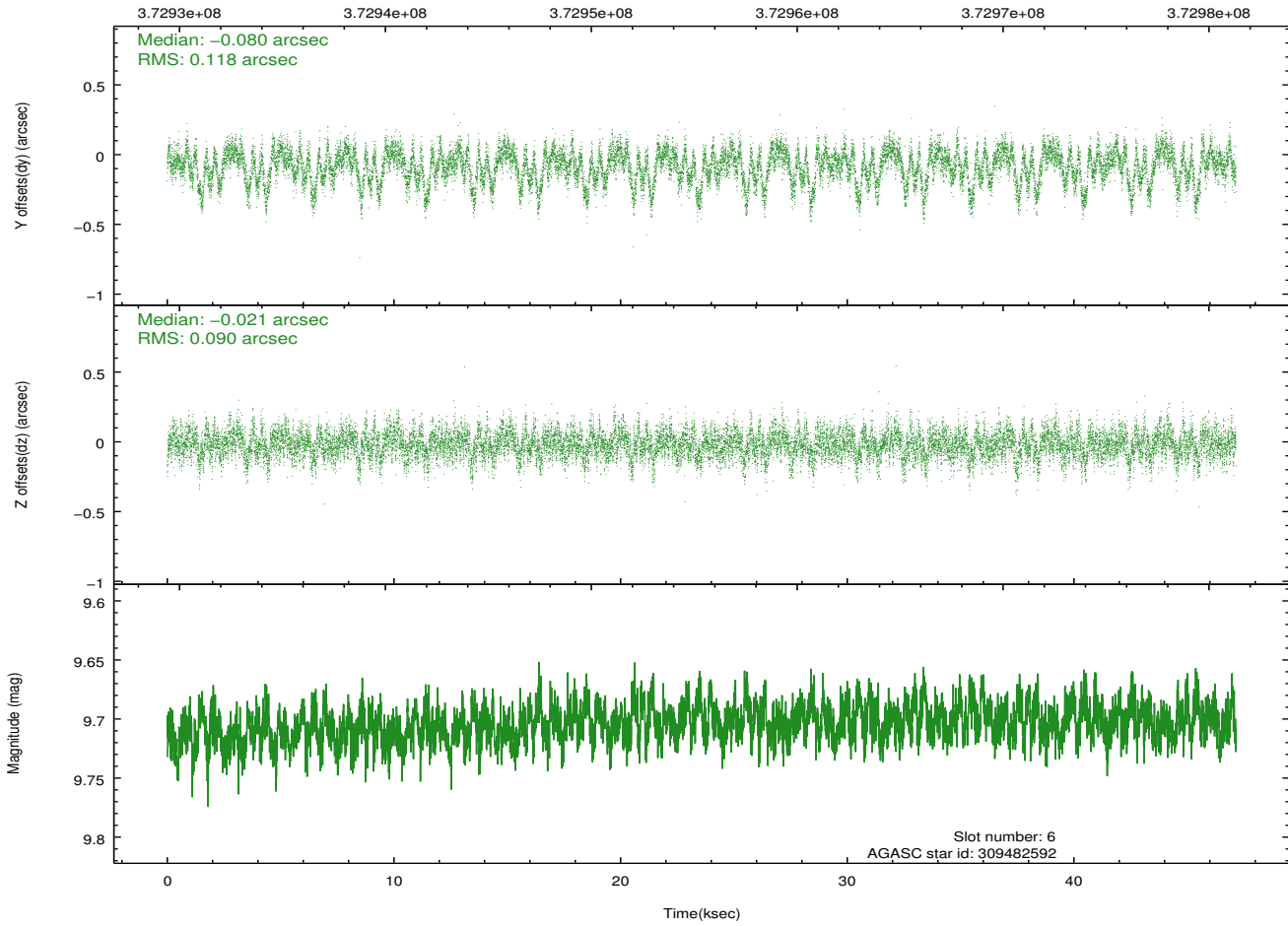
2.4.3 Slot 5



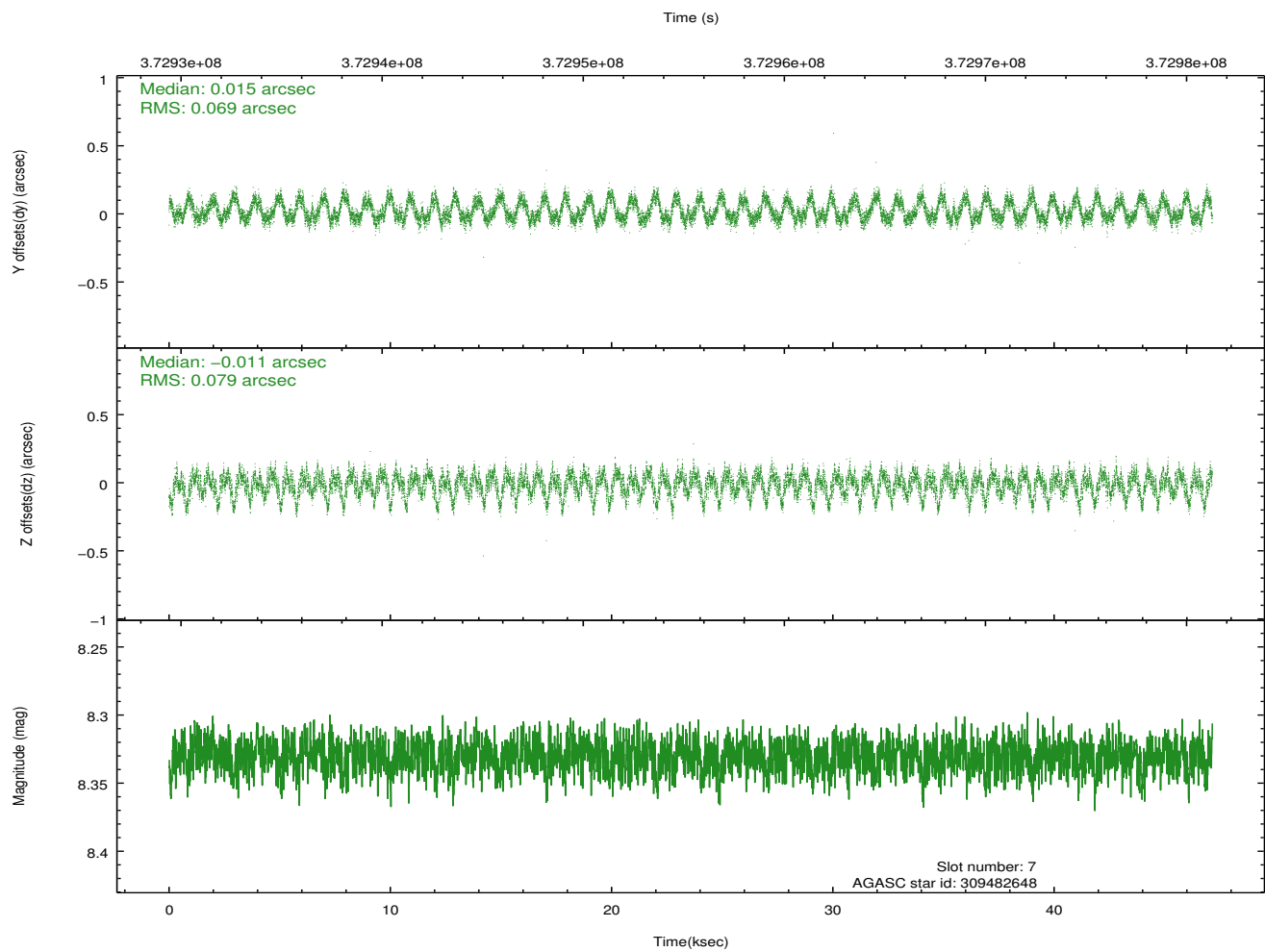
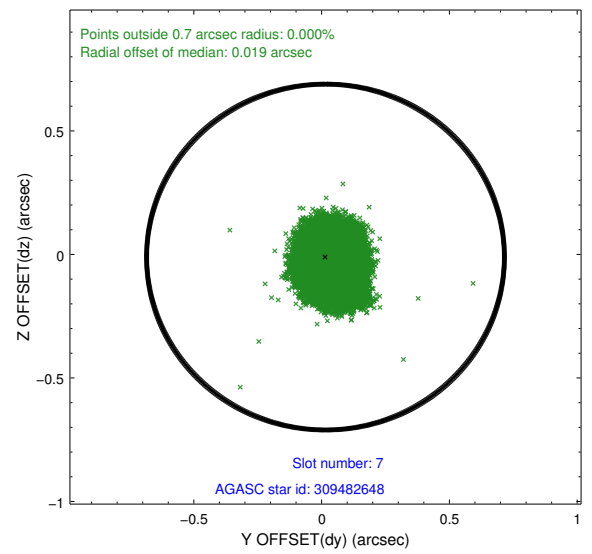
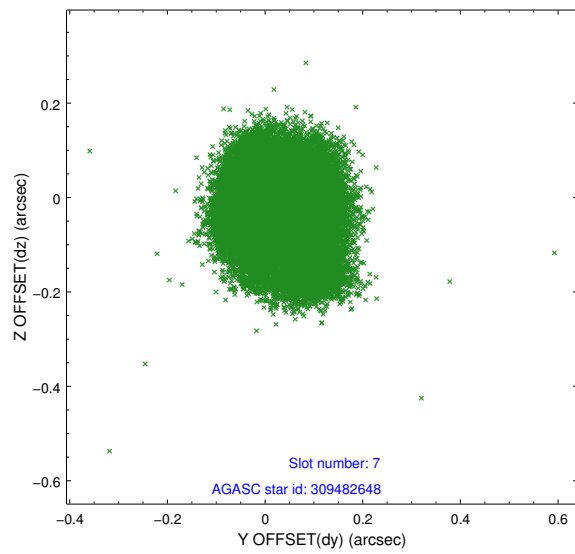
2.4.4 Slot 6



Time (s)

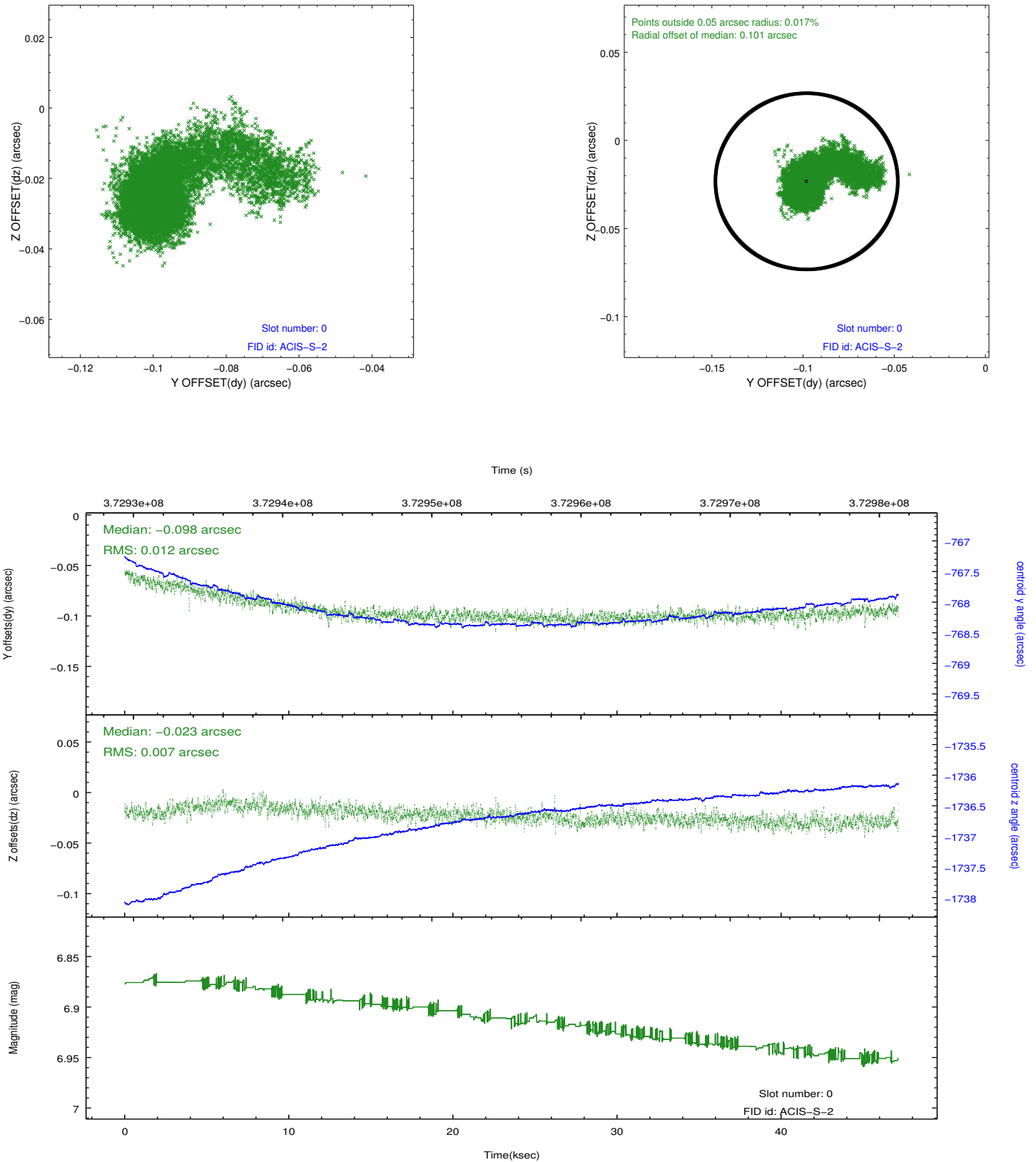


2.4.5 Slot 7

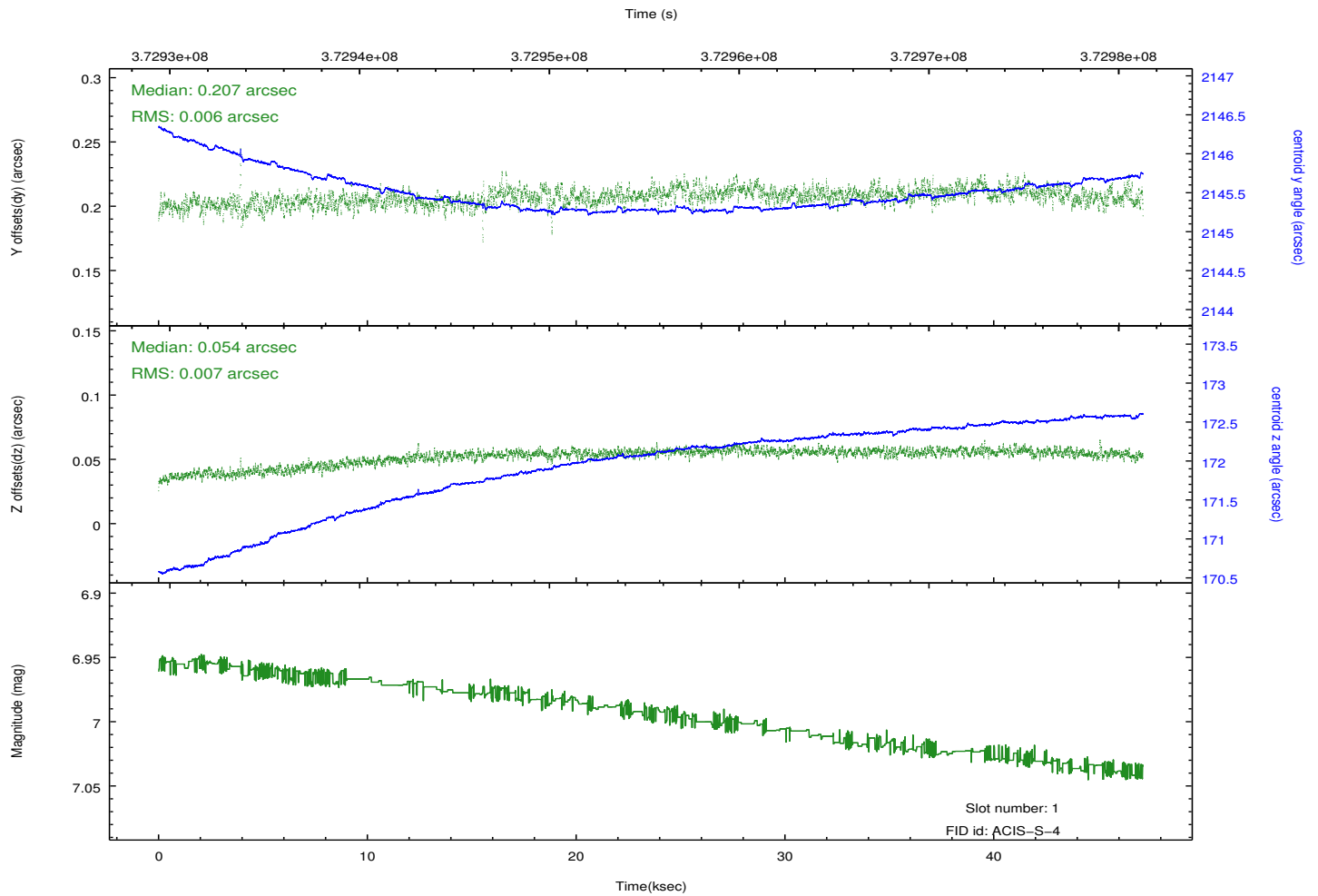
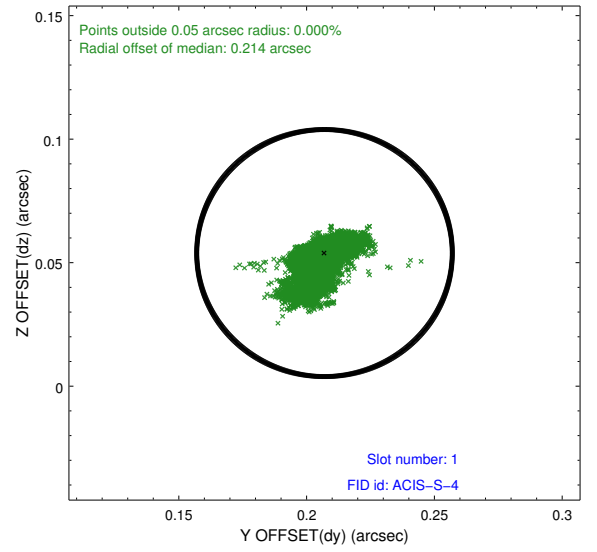
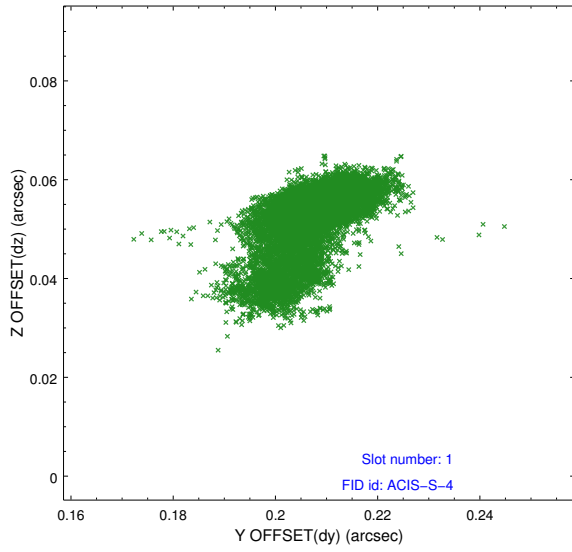


2.5 FID Slots

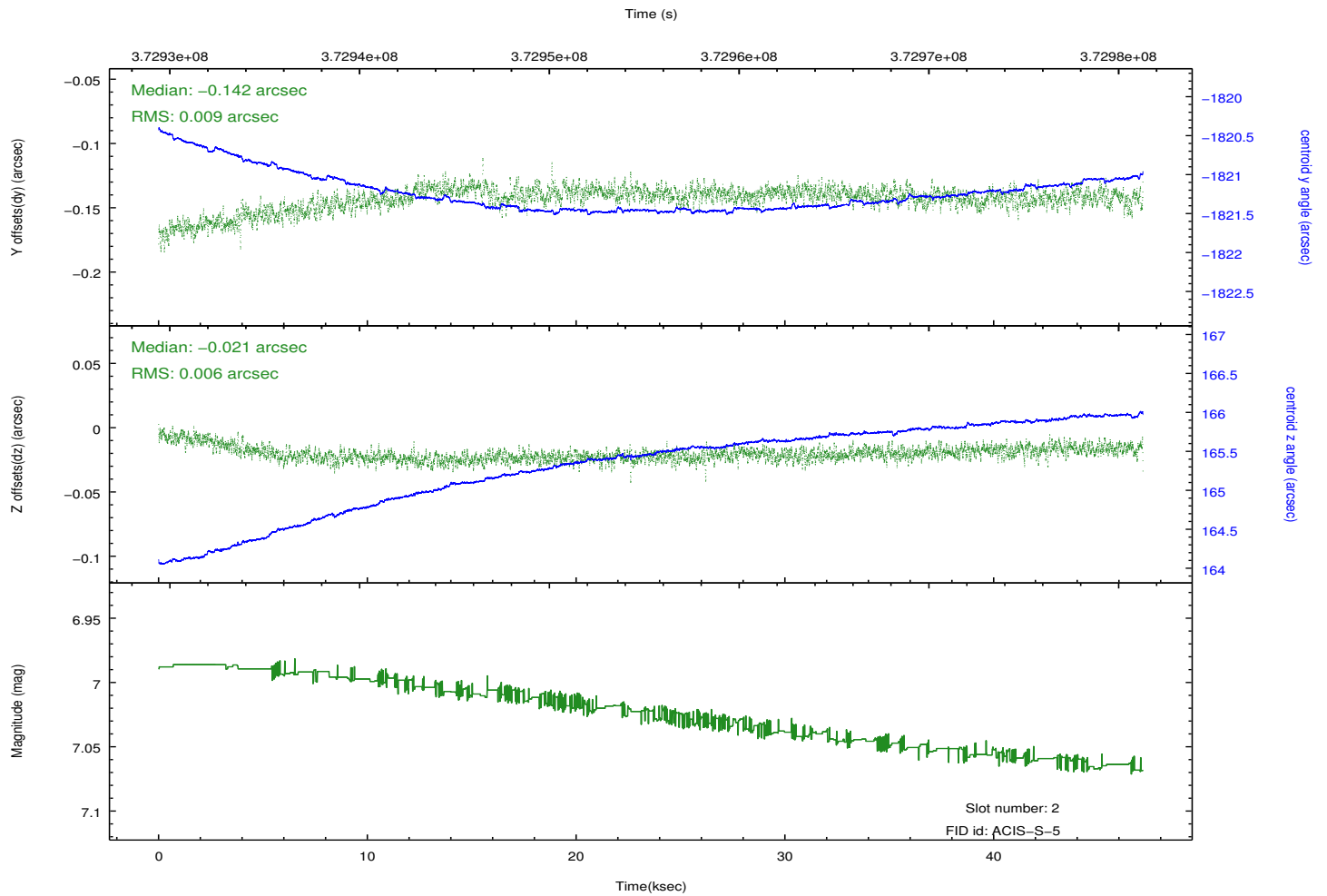
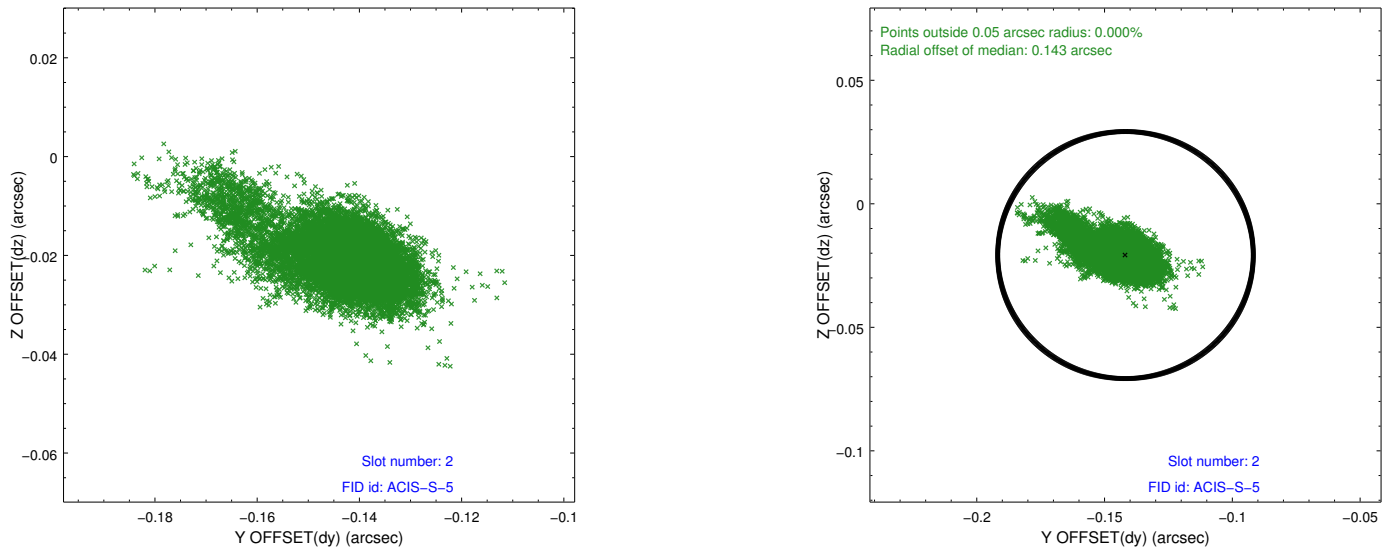
2.5.1 Slot 0



2.5.2 Slot 1



2.5.3 Slot 2



A Summary

A.1 Status

V&V Scientist	Beth Sundheim
V&V Date (YYYY-MM-DD)	2012.06.19
V&V Edition	1
V&V Disposition and Status	OK
V&V Charge Time	47.113326262712

A.2 Comments

Joint proposal with NOAO.