

# V&V Reference Report

## L2 ASCDS Version : 8.4.5

Observation 11609 - L2 Version 2  
Chandra X-Ray Center

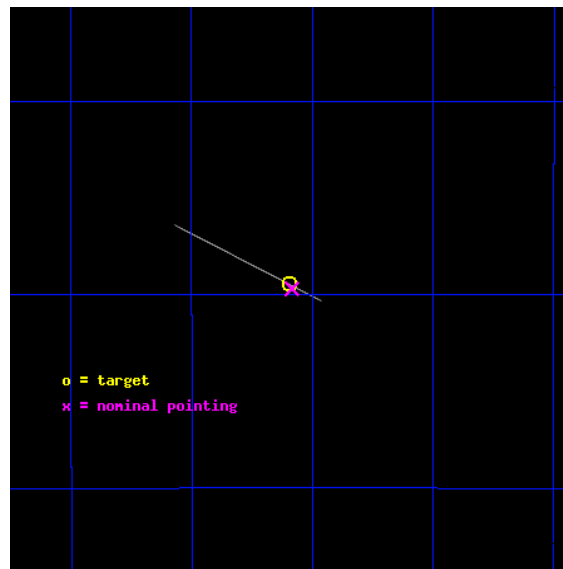
L2 Processing Date : Jun 25 2012

## Contents

<b>1</b>	<b>Front</b>	<b>2</b>
<b>2</b>	<b>OBI</b>	<b>3</b>
2.1	OBI . . . . .	3
2.1.1	Images . . . . .	3
2.1.2	Bias . . . . .	3
2.1.3	Parameters . . . . .	4
2.1.4	Events . . . . .	4
2.2	Compared Parameters . . . . .	5
2.3	Aspect . . . . .	6
2.4	Star Slots . . . . .	9
2.4.1	Slot 3 . . . . .	9
2.4.2	Slot 4 . . . . .	10
2.4.3	Slot 5 . . . . .	11
2.4.4	Slot 6 . . . . .	12
2.4.5	Slot 7 . . . . .	13
2.5	FID Slots . . . . .	14
2.5.1	Slot 0 . . . . .	14
2.5.2	Slot 1 . . . . .	15
2.5.3	Slot 2 . . . . .	16
<b>A</b>	<b>Summary</b>	<b>17</b>
A.1	Status . . . . .	17
A.2	Comments . . . . .	17

# 1 Front

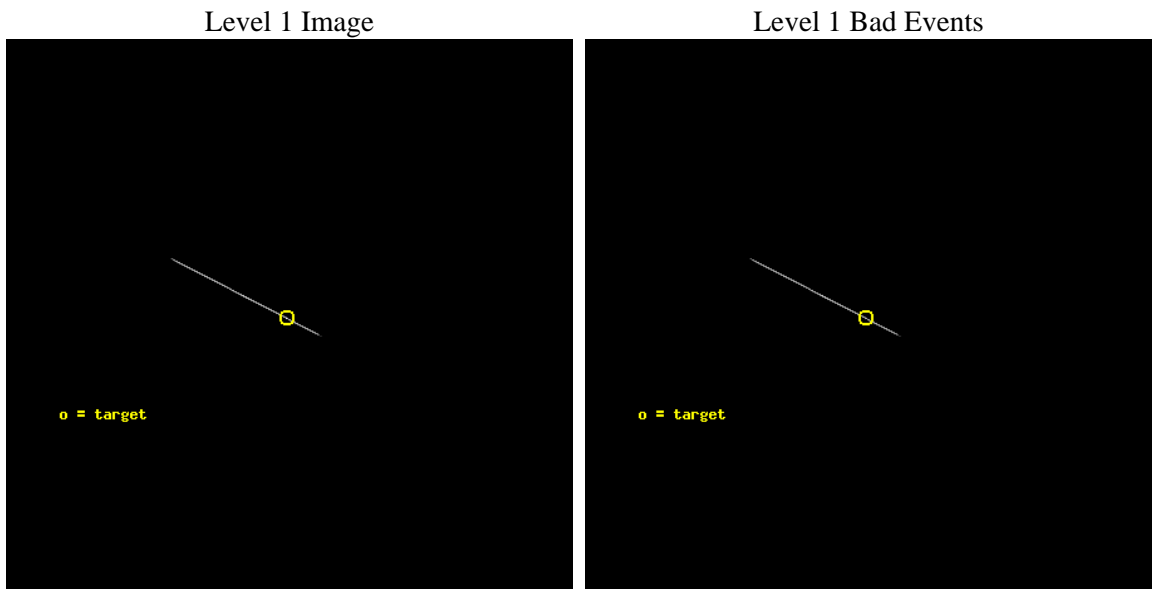
seq_num	702195	Sequence number
obs_id	11609	Observation id
title	The nature of the variable X-ray absorber in ESO 362-G18	Proposal
observer	Giovanni Miniutti	Principal investigator
object	ESO 362-G18	Source name
ra_targ	79.899167	Observer's specified target RA [deg]
dec_targ	-32.657778	Observer's specified target Dec [deg]
ra_nom	79.896197076468	Nominal RA [deg]
dec_nom	-32.661879835303	Nominal Dec [deg]
roll_nom	207.03658855044	Nominal Roll [deg]
revision	2	Processing version of data
ontime	10184.75	Sum of GTIs [s]
livetime	10144.965820312	Livetime [s]
ontime7	10184.75	Sum of GTIs [s]
l2events	60092	Number of level 2 events



## 2 OBI

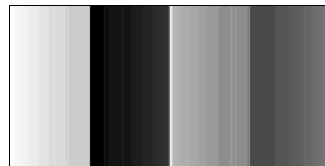
### 2.1 OBI

#### 2.1.1 Images



#### 2.1.2 Bias

Chip 7



### 2.1.3 Parameters

obi_num	0	Obi number	sched_exp_time	10000.728000	[s] Scheduled observation exposure time
ascdsver	8.4.5	Processing system revision	ontime	10184.75	Sum of GTIs [s]
caldbver	4.4.10	&#160	ontime7	10184.75	Sum of GTIs [s]
date	2012-06-26T01:05:47	Date and time of file creation	l1events	158810	Number of level 1 events
revision	2	Processing version of data			

### 2.1.4 Events

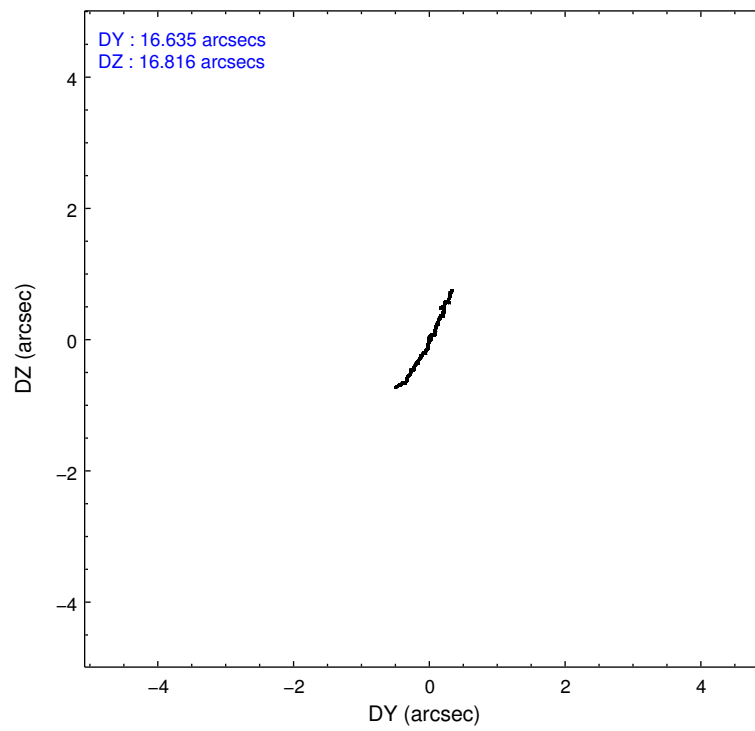
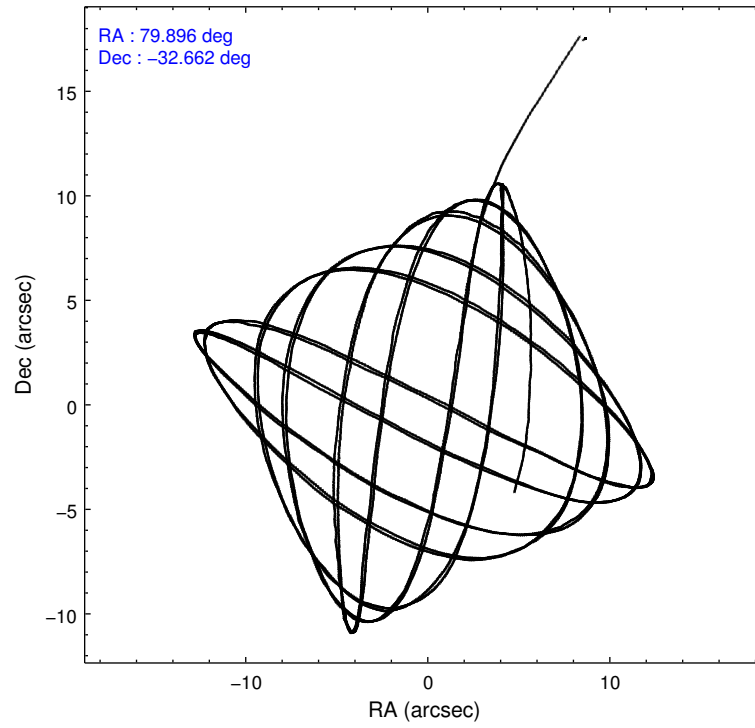
	<b>ccd 7</b>
level 1 events	158810
rejected events	96593
rejected %	60%

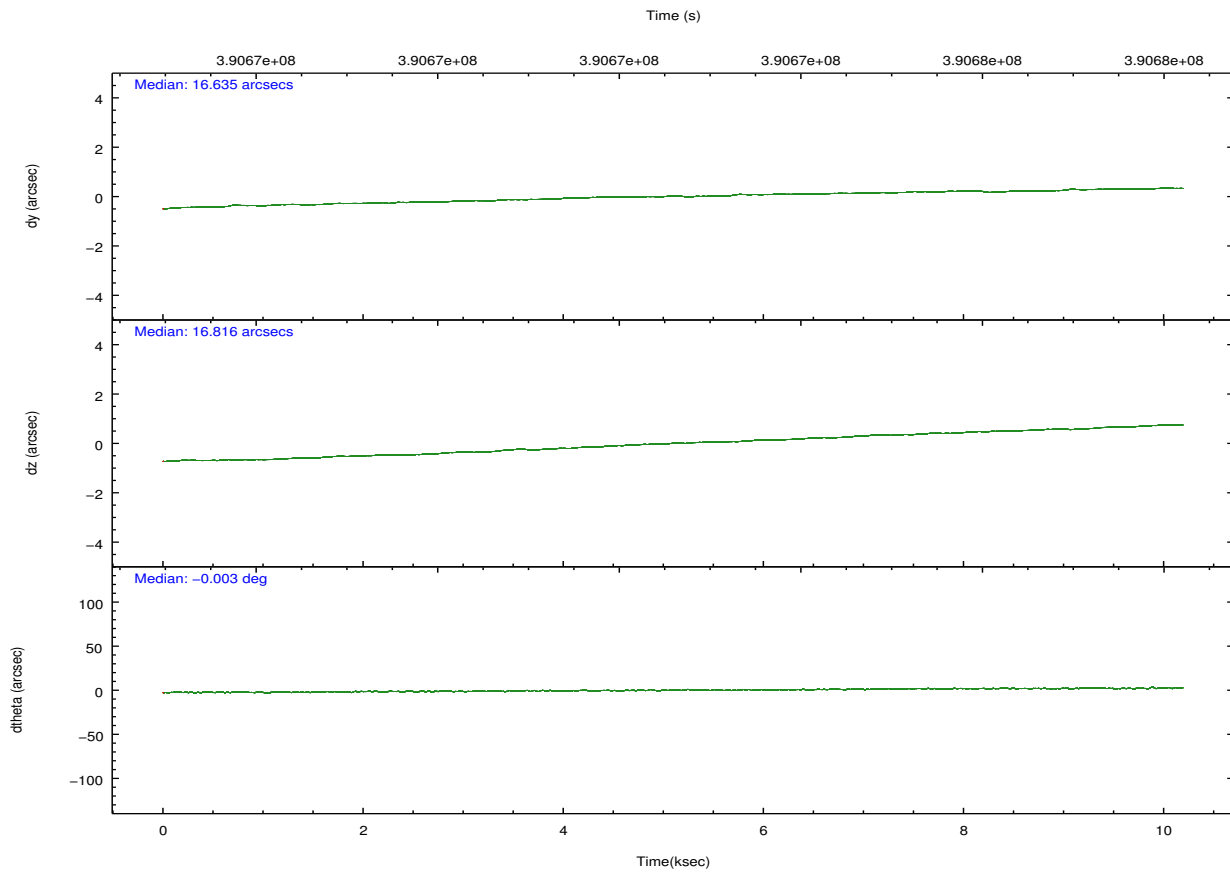
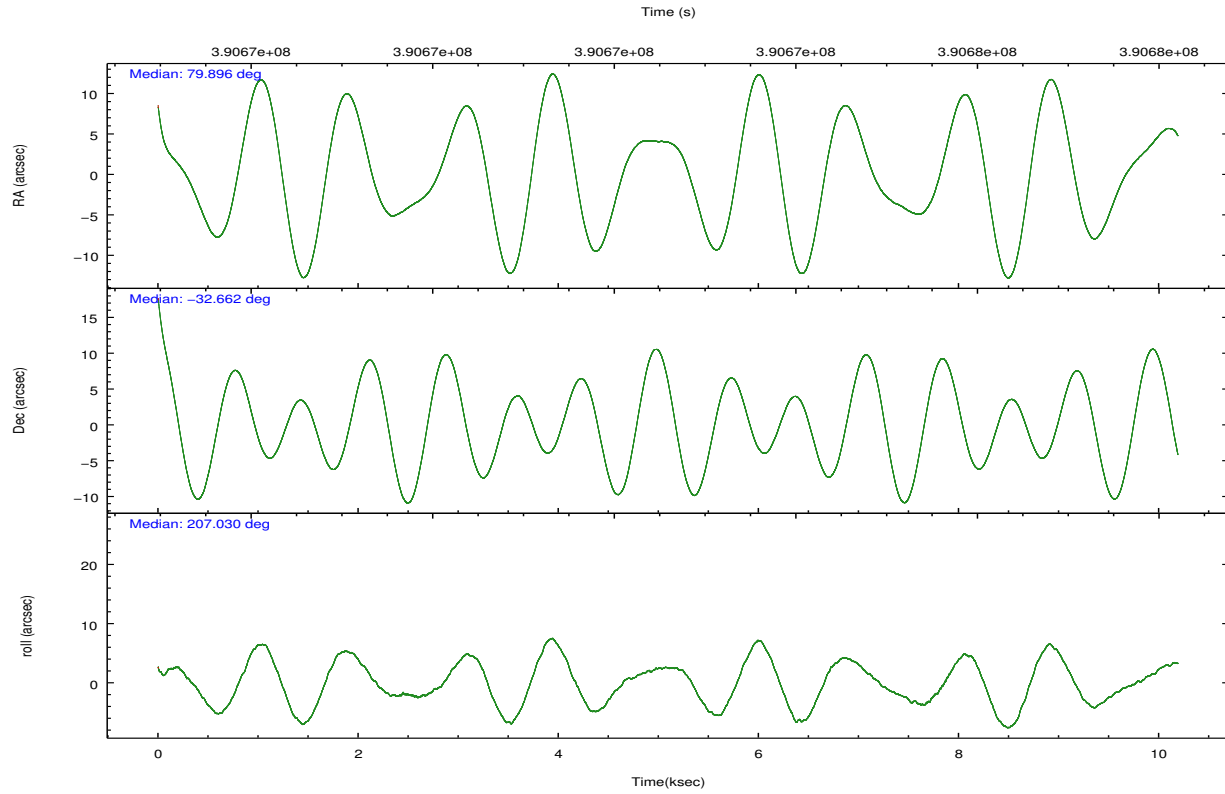
	<b>ccd 7</b>
grade 0 events	8669
	5%
grade 1 events	159
	0%
grade 2 events	16783
	10%
grade 3 events	4501
	2%
grade 4 events	4232
	2%
grade 5 events	10285
	6%
grade 6 events	28314
	17%
grade 7 events	85867
	54%

## 2.2 Compared Parameters

Parameter	Planned	Actual	Parameter	Planned	Actual
Instrument	ACIS	ACIS	Obspar format version number	7	7
Detector	ACIS-7	ACIS-7	Obspar file type	PREDICTED	ACTUAL
Grating	NONE	NONE	Obspar update status	NONE	UPDATED
Data mode	CC33_FAINT	CC33_FAINT	Number of optional ACIS chips dropped	0	0
Observation mode	POINTING	POINTING	On-chip summing requested	N	N
[deg] Pointing RA	79.913475	79.89619707646769	Subarray requested	NONE	NONE
[deg] Pointing Dec	-32.638769	-32.6618798353029	Alternating exposures requested	N	N
[deg] Pointing Roll	206.889290	207.0365885504422	[s] Primary exposure time	0.000000	0
[mm] SIM focus pos	-0.684267	-0.6828225247311905			
[mm] SIM defocus	0	0.001444936568705701			
[mm] SIM translation stage pos	-190.132523	-190.1425803651734			
[mm] SIM translation stage offset	0	0.01005778216563158			
[s] Observation start time (MET)	390667680.184000	390666739.13182			
Observation start date	2010-05-19T14:46:54	2010-05-19T14:32:19			
[s] Observation end time (MET)	390677680.184000	390677910.60739			
Observation end date	2010-05-19T17:33:34	2010-05-19T17:38:30			
Read mode	CONTINUOUS	CONTINUOUS			

## 2.3 Aspect



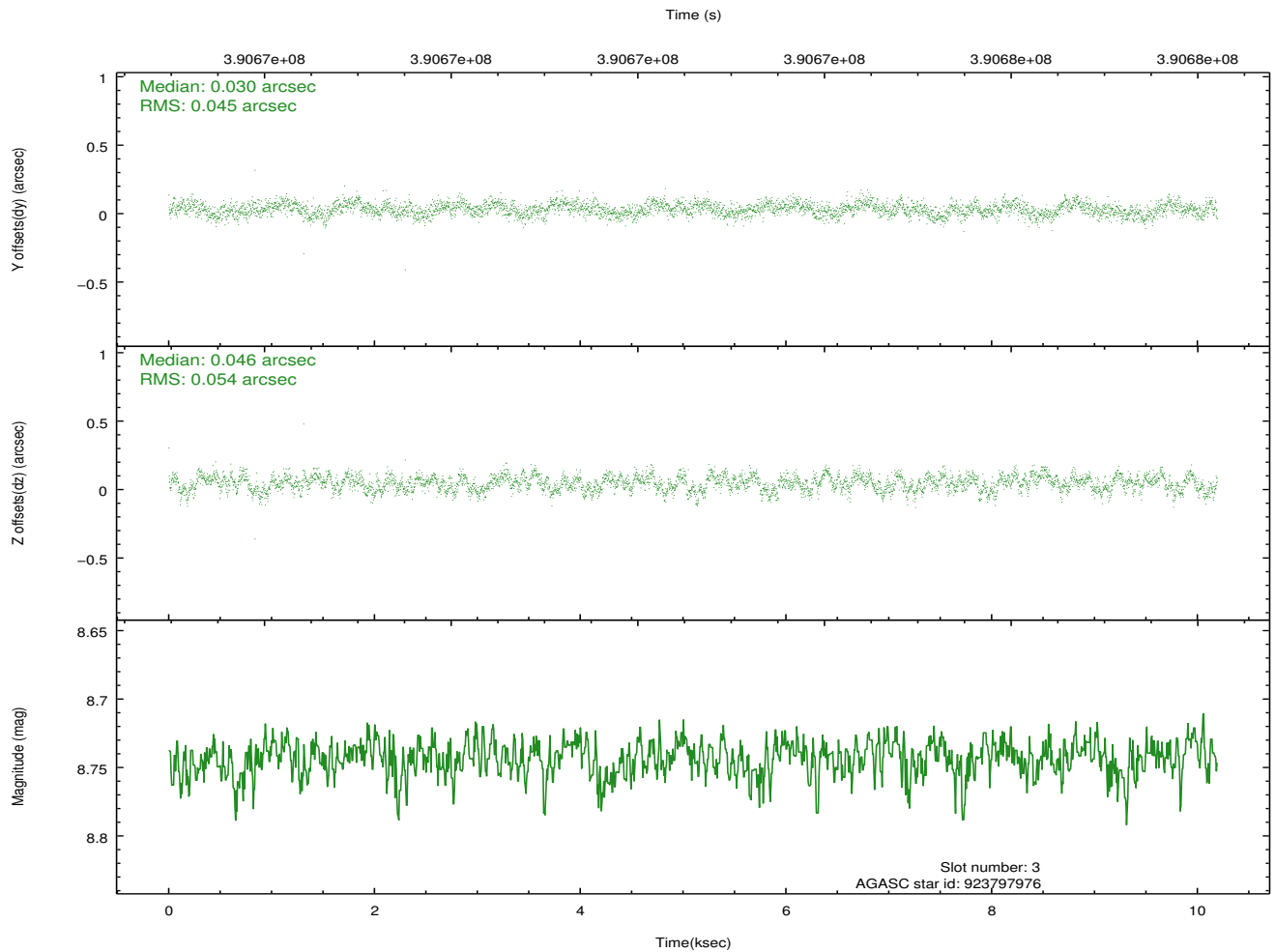
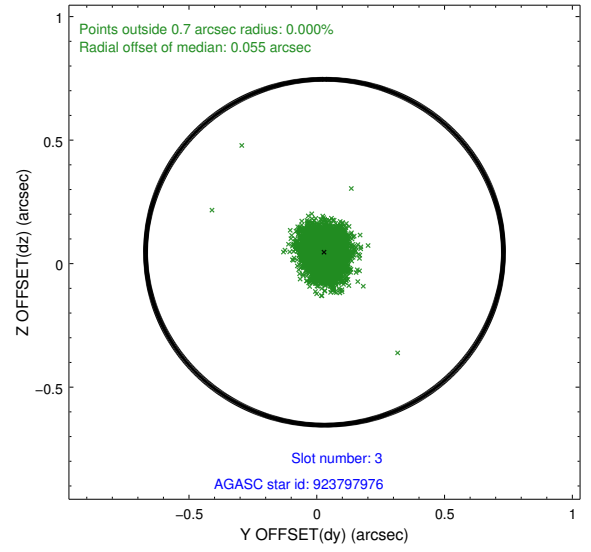
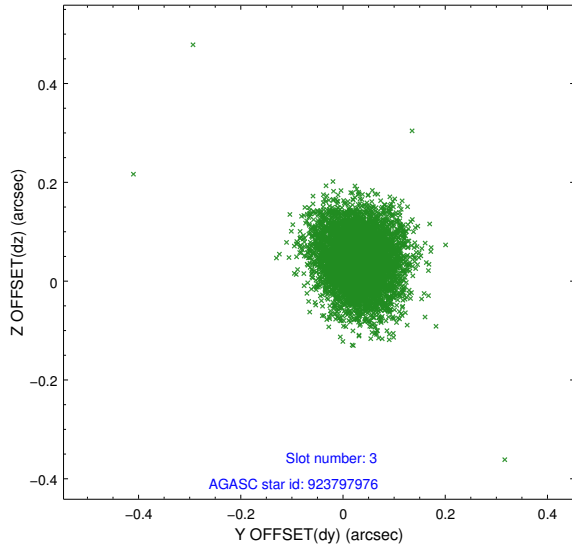


### Slot Statistics

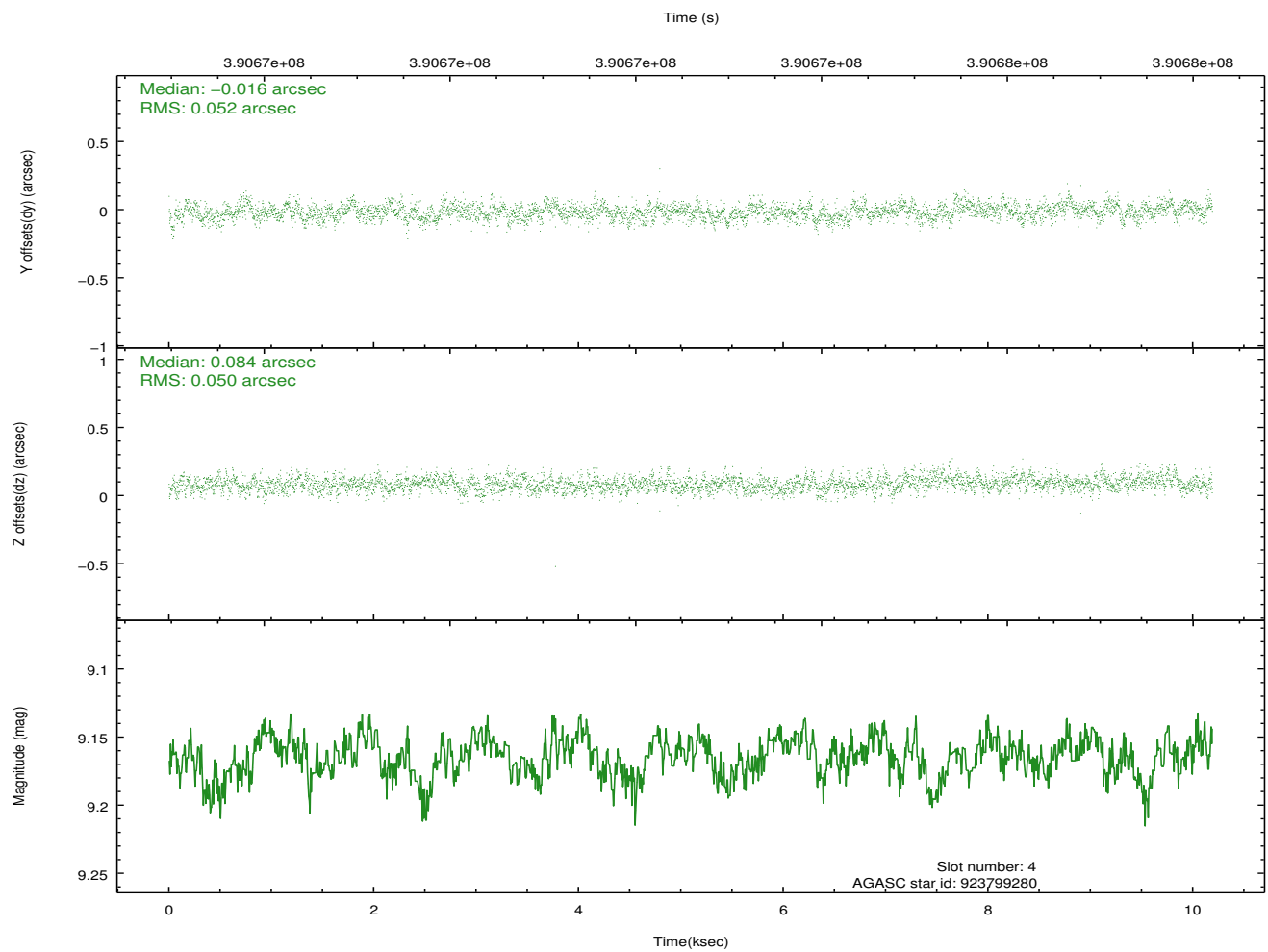
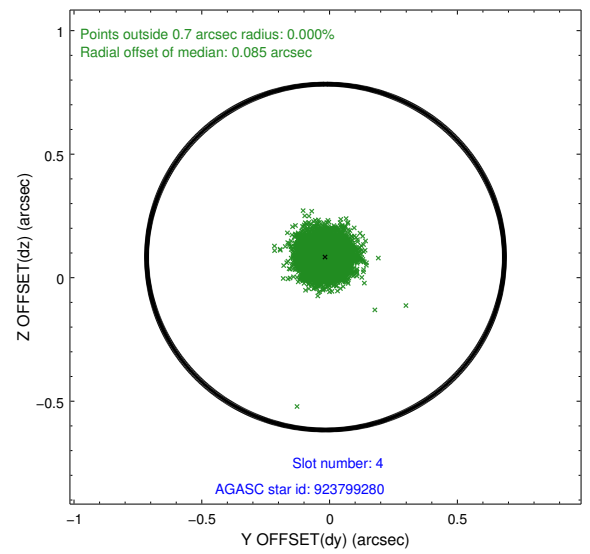
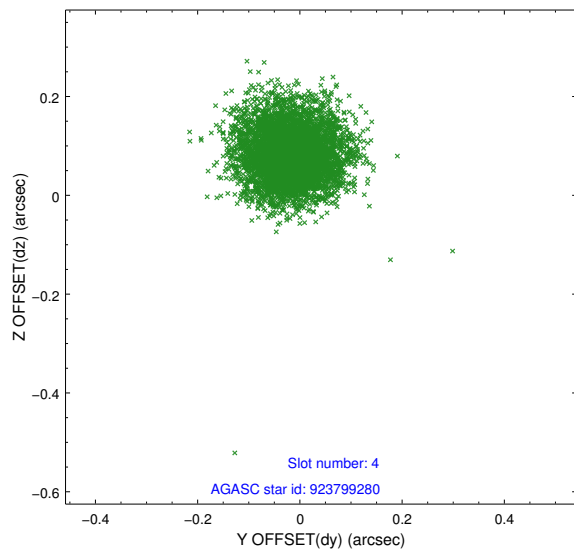
slot	status	id	mag	n_pts	med_dy	med_dz	dr1	dr2	ra	dec	mean_y	mean_z
0	FID	ACIS-S-2	6.91	2486	-0.075	-0.031	0.015	0.021	0.000000	0.000000	-769.72	-1738.20
1	FID	ACIS-S-4	6.99	2486	0.175	0.045	0.010	0.017	0.000000	0.000000	2143.59	169.79
2	FID	ACIS-S-5	7.03	2486	-0.130	-0.003	0.013	0.021	0.000000	0.000000	-1821.93	164.04
3	GUIDE	923797976	8.74	4971	0.030	0.046	0.074	0.118	79.531597	-32.443563	718.35	-1149.15
4	GUIDE	923799280	9.16	4970	-0.016	0.084	0.076	0.123	80.234023	-31.921546	-2040.08	-1858.62
5	GUIDE	924192560	7.78	4971	-0.128	-0.199	0.055	0.094	80.544313	-32.539454	-1866.92	551.65
6	GUIDE	924195696	8.88	4971	0.115	-0.007	0.081	0.131	79.532624	-33.441289	2327.90	2061.91
7	GUIDE	923797728	8.61	4958	-0.008	0.078	0.085	0.135	79.694448	-31.988137	-461.53	-2390.10

## 2.4 Star Slots

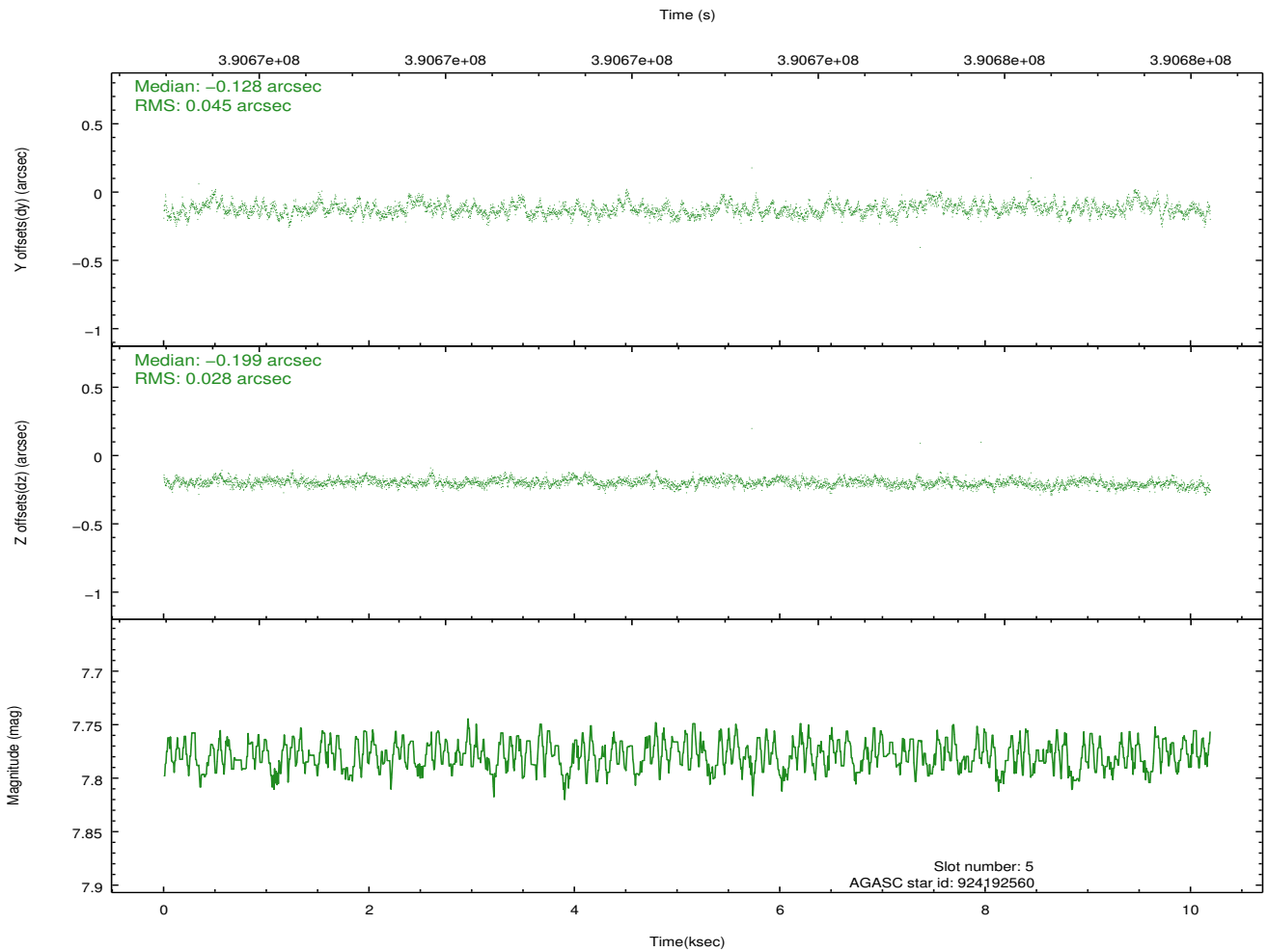
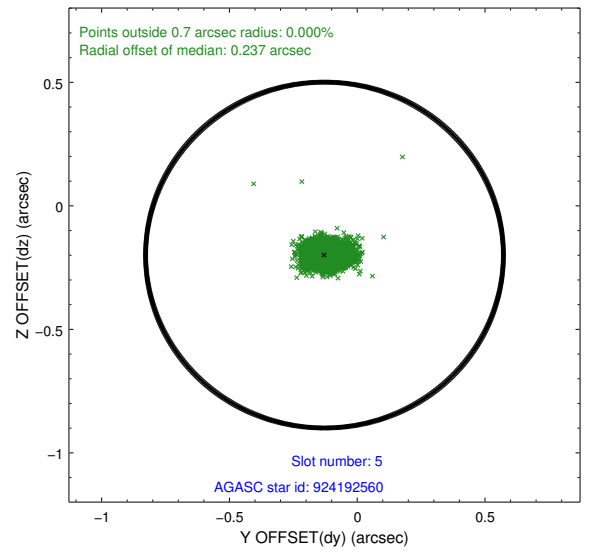
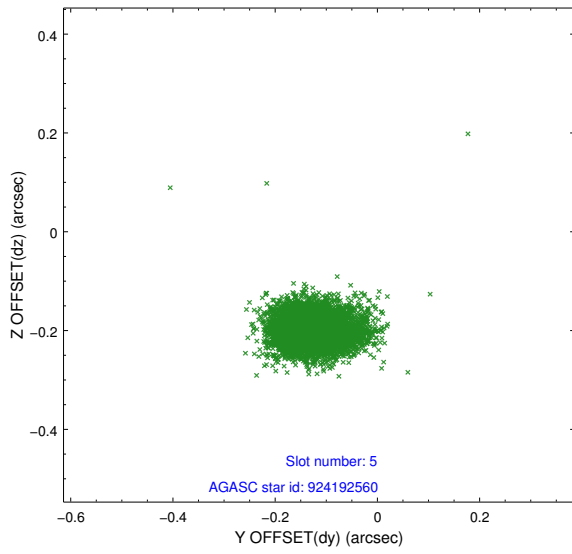
### 2.4.1 Slot 3



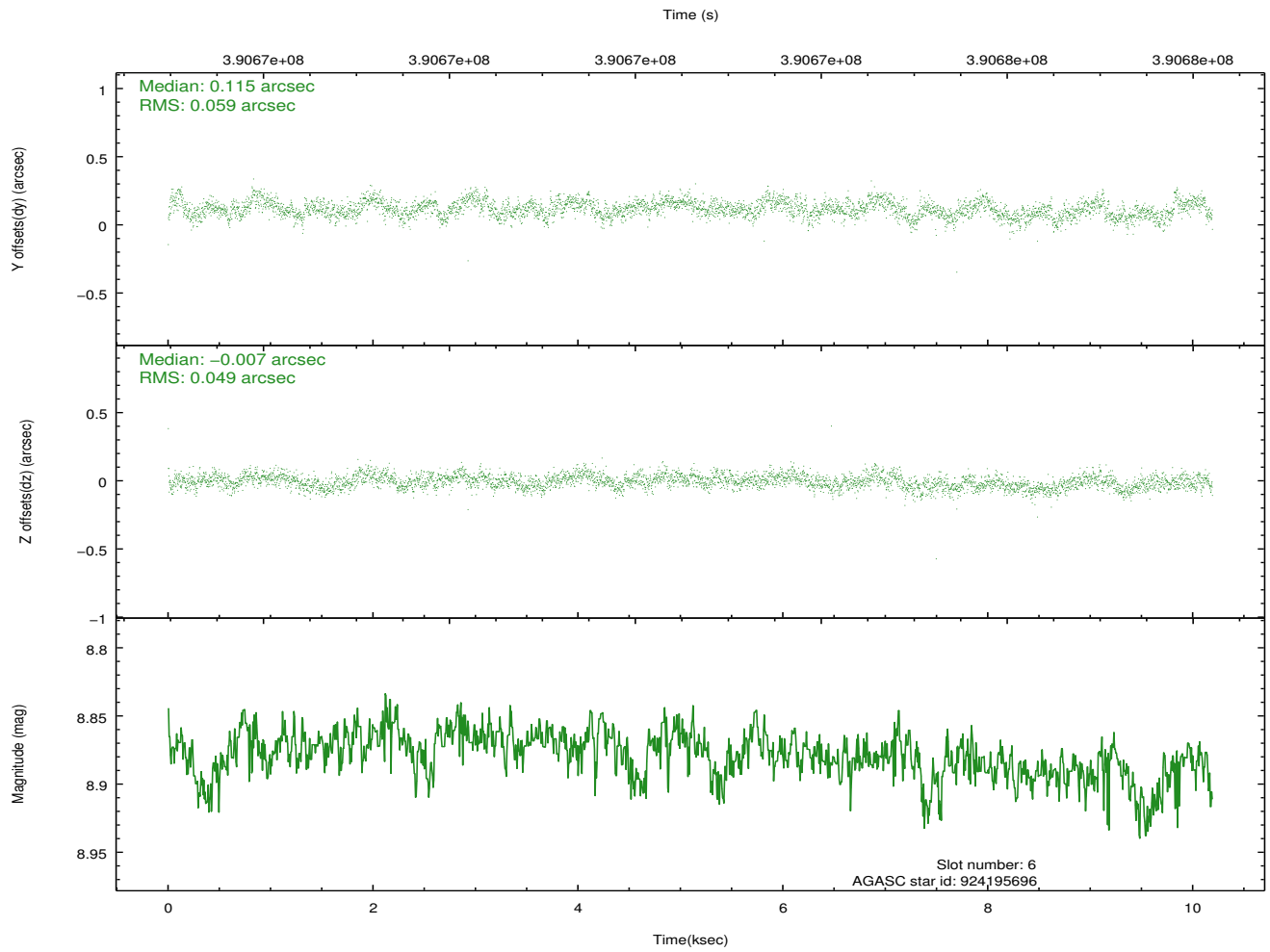
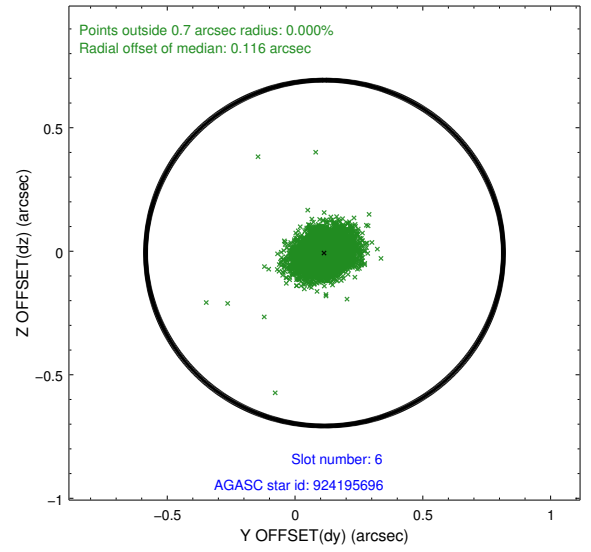
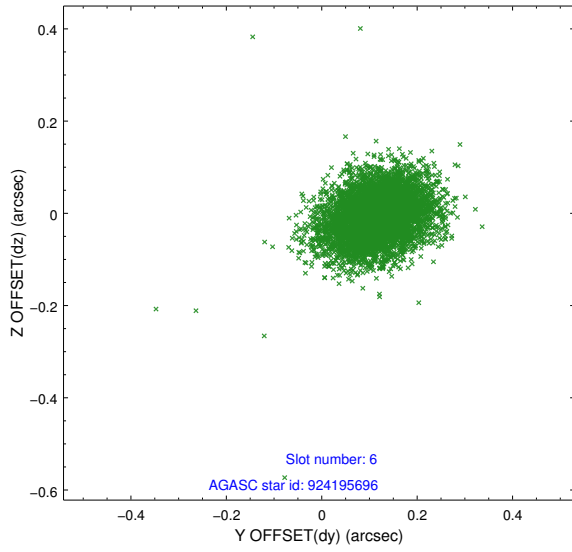
## 2.4.2 Slot 4



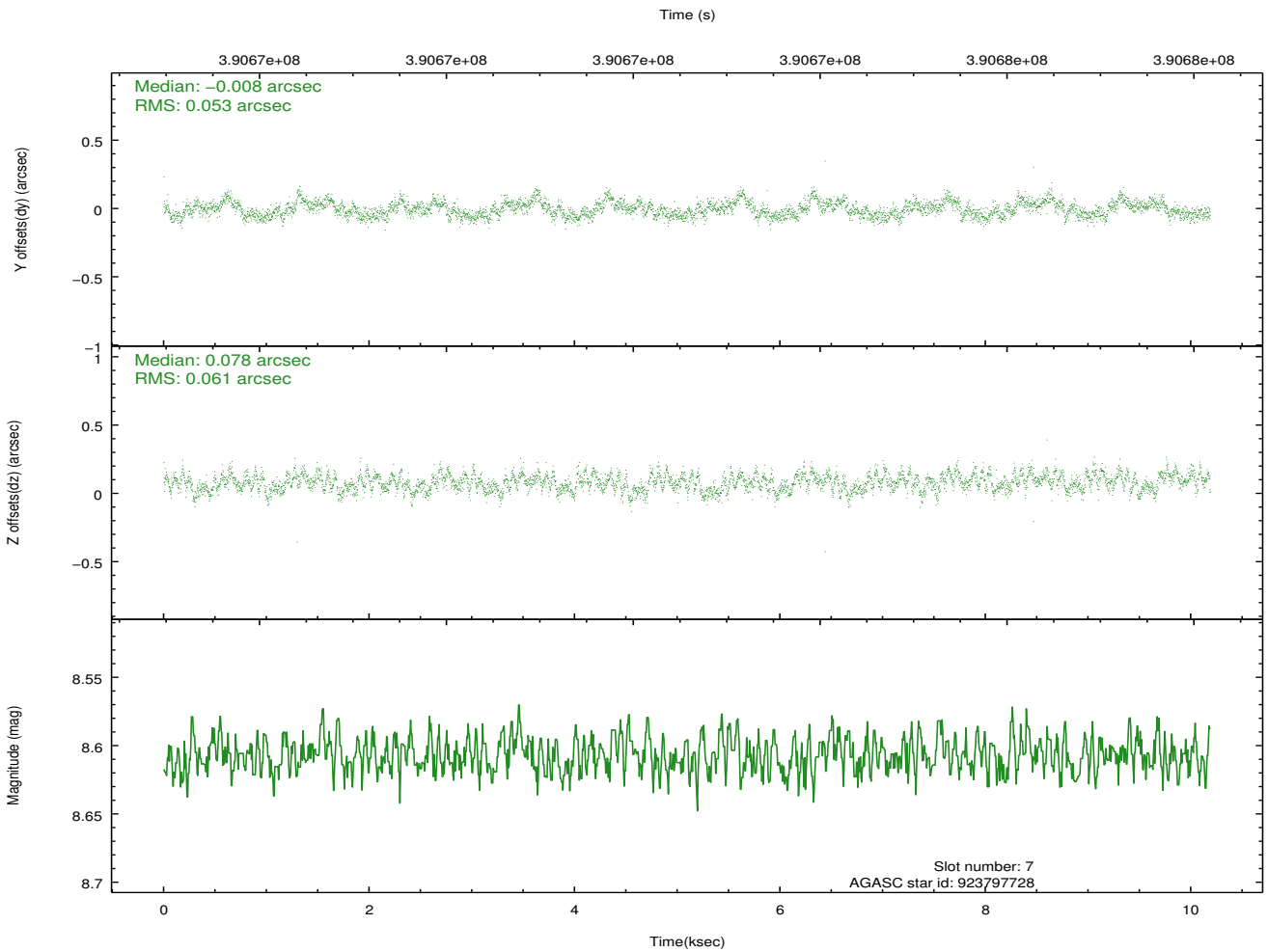
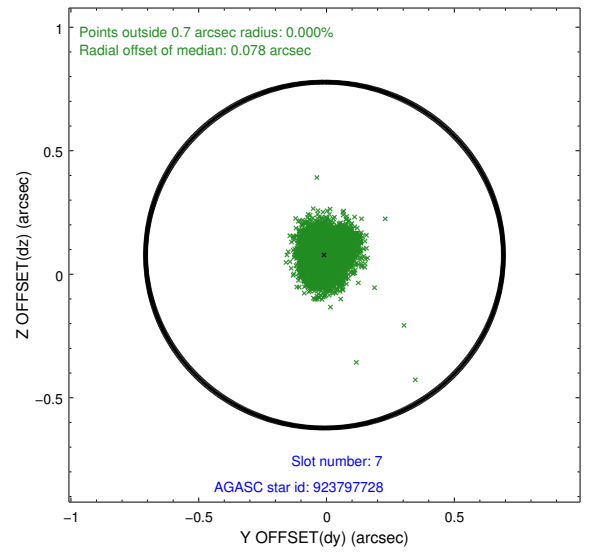
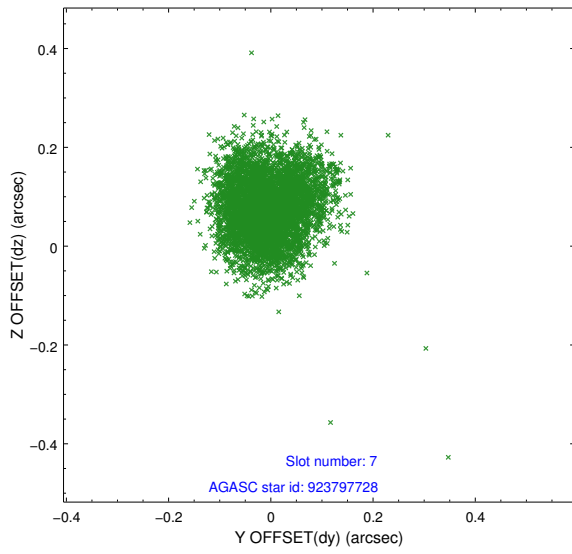
### 2.4.3 Slot 5



### 2.4.4 Slot 6

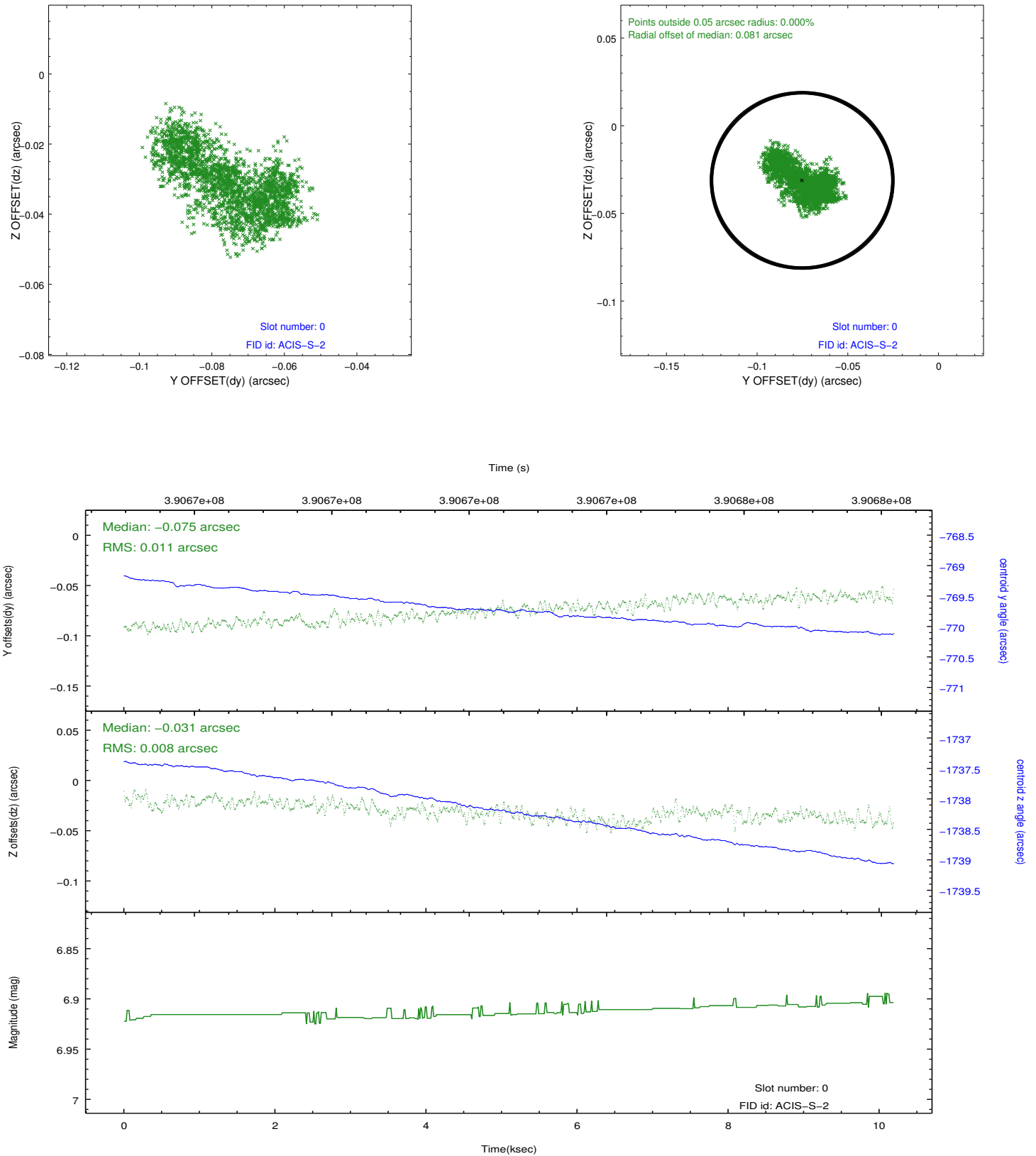


## 2.4.5 Slot 7

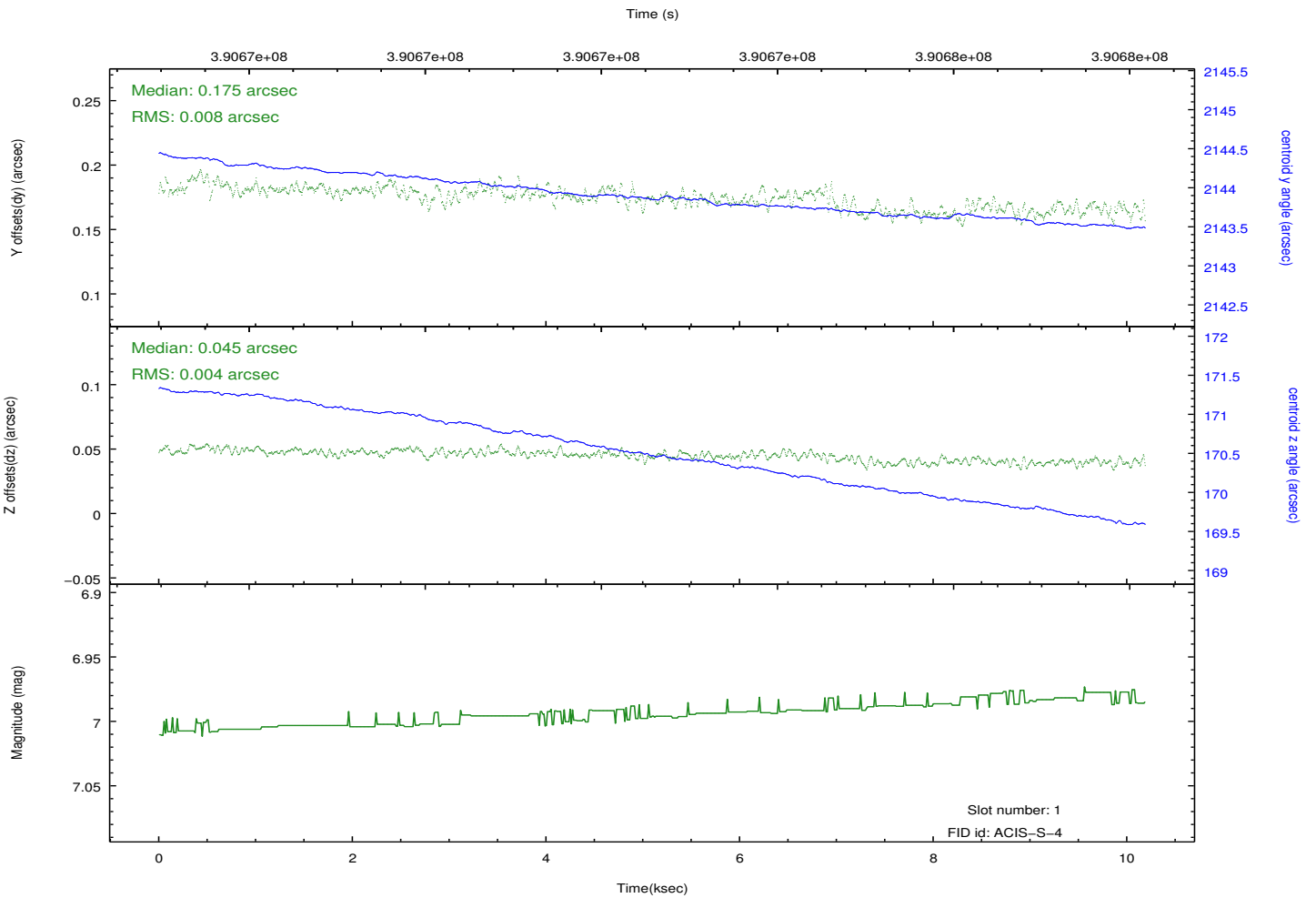
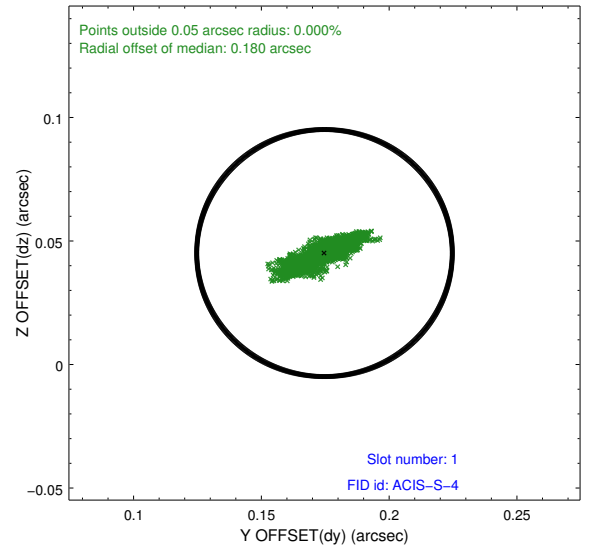
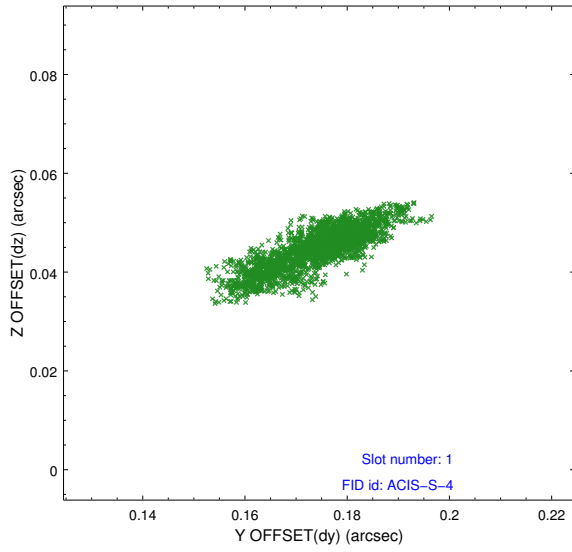


## 2.5 FID Slots

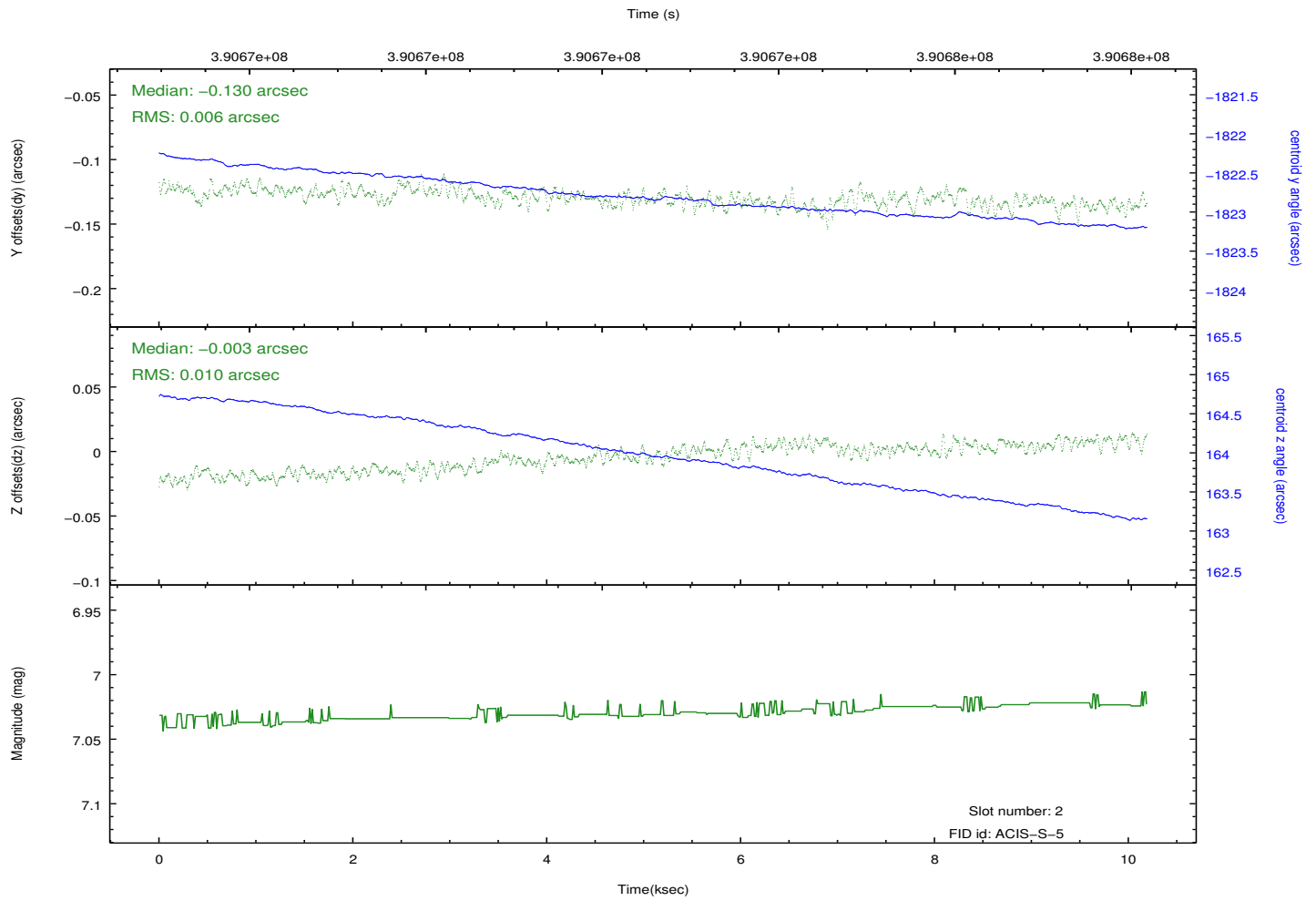
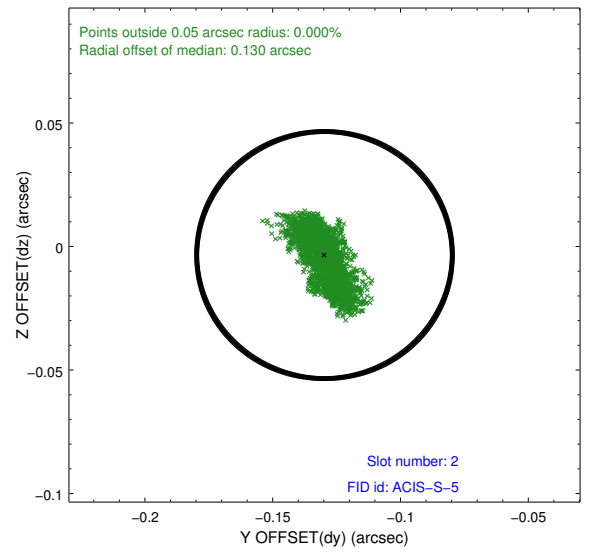
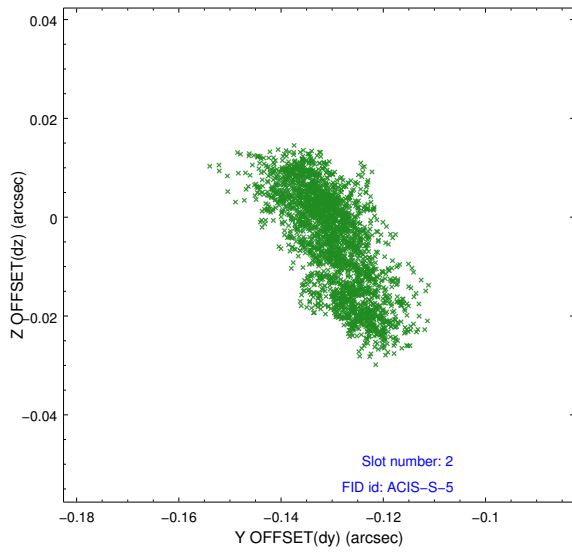
### 2.5.1 Slot 0



## 2.5.2 Slot 1



### 2.5.3 Slot 2



# A Summary

## A.1 Status

V&V Scientist	Joy Nichols
V&V Date (YYYY-MM-DD)	2012.06.26
V&V Edition	1
V&V Disposition and Status	OK
V&V Charge Time	10.18475

## A.2 Comments