

V&V Reference Report

L2 ASCDS Version : 8.4.5

Observation 11669 - L2 Version 2
Chandra X-Ray Center

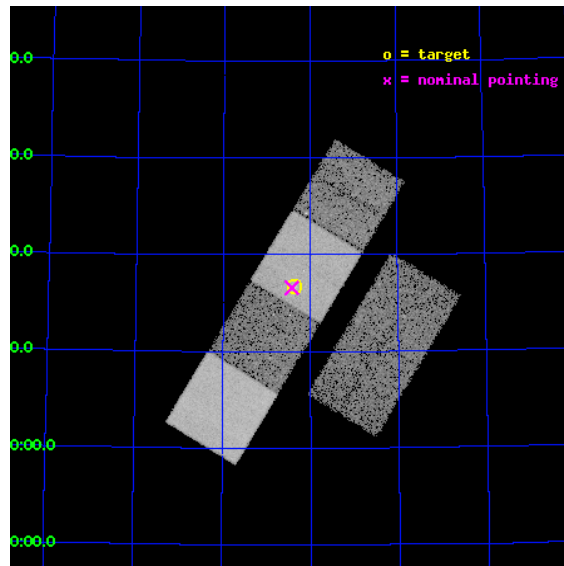
L2 Processing Date : Jun 29 2012

Contents

1	Front	2
2	OBI	3
2.1	OBI	3
2.1.1	Images	3
2.1.2	Bias	3
2.1.3	Parameters	4
2.1.4	Events	4
2.2	Compared Parameters	5
2.3	Aspect	6
2.4	Star Slots	9
2.4.1	Slot 3	9
2.4.2	Slot 4	10
2.4.3	Slot 5	11
2.4.4	Slot 6	12
2.4.5	Slot 7	13
2.5	FID Slots	14
2.5.1	Slot 0	14
2.5.2	Slot 1	15
2.5.3	Slot 2	16
A	Summary	17
A.1	Status	17
A.2	Comments	17

1 Front

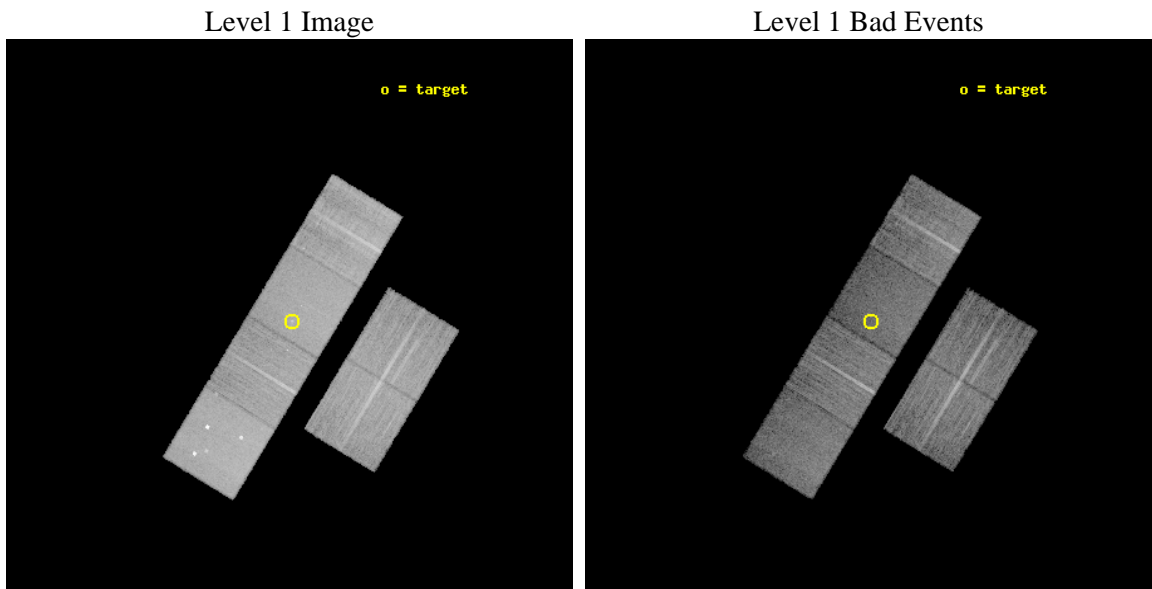
seq_num	702255	Sequence number
obs_id	11669	Observation id
title	Investigating the Nuclear Activity of Barred and Unbarred Spiral Galaxies	Proposal title
observer	Dr Leigh Jenkins	Principal investigator
object	NGC 2985	Source name
dtcycle	0	
cycle	P	events from which exps? Prim/Second/Both
ra_targ	147.592625	Observer's specified target RA [deg]
dec_targ	72.278639	Observer's specified target Dec [deg]
ra_nom	147.60686764015	Nominal RA [deg]
dec_nom	72.276408866192	Nominal Dec [deg]
roll_nom	301.19147119076	Nominal Roll [deg]
revision	2	Processing version of data
ontime	13950.966586947	Sum of GTIs [s]
livetime	13774.31104776	Livetime [s]
ontime2	13951.007626951	Sum of GTIs [s]
ontime3	13950.843466938	Sum of GTIs [s]
ontime5	13950.925546944	Sum of GTIs [s]
ontime6	13950.884506941	Sum of GTIs [s]
ontime7	13950.966586947	Sum of GTIs [s]
ontime8	13947.561456621	Sum of GTIs [s]
l2events	168955	Number of level 2 events



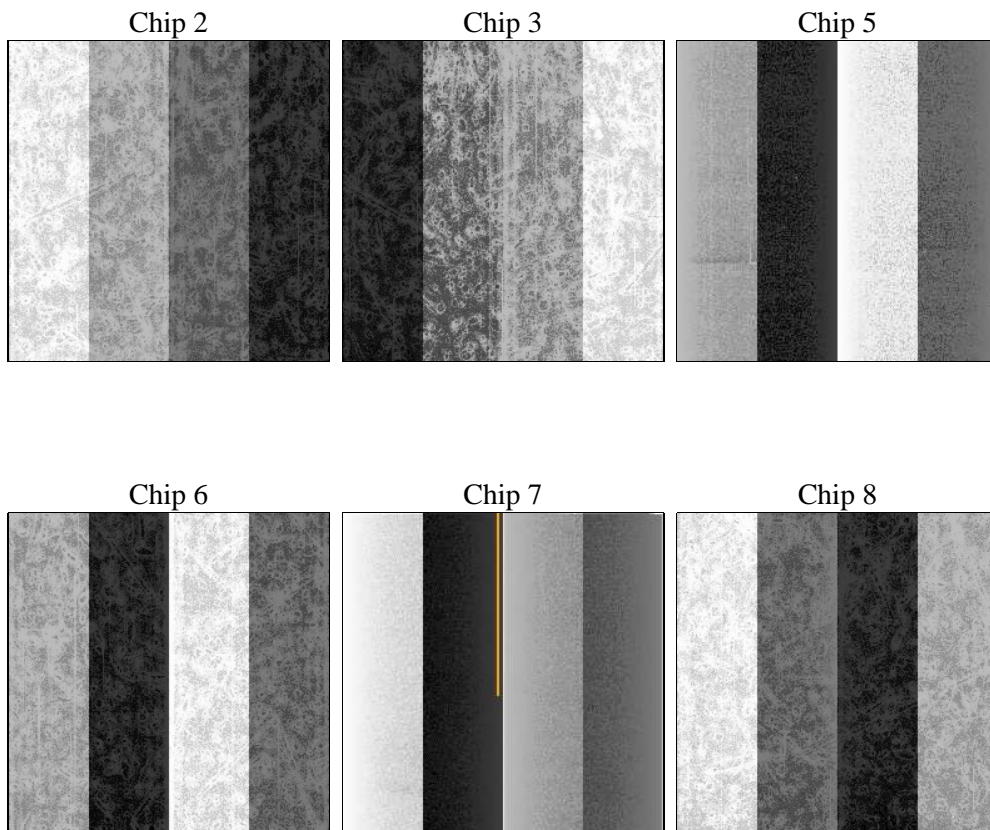
2 OBI

2.1 OBI

2.1.1 Images



2.1.2 Bias



2.1.3 Parameters

obi_num	0	Obi number	sched_exp_time	13900.000000	[s] Scheduled observation exposure time
ascdsver	8.4.5	Processing system revision	ontime	13950.966586947	Sum of GTIs [s]
caldbver	4.5.0	 	ontime2	13951.007626951	Sum of GTIs [s]
date	2012-06-29T09:56:23	Date and time of file creation	ontime3	13950.843466938	Sum of GTIs [s]
revision	2	Processing version of data	ontime5	13950.925546944	Sum of GTIs [s]
			ontime6	13950.884506941	Sum of GTIs [s]
			ontime7	13950.966586947	Sum of GTIs [s]
			ontime8	13947.561456621	Sum of GTIs [s]
			l1events	740842	Number of level 1 events

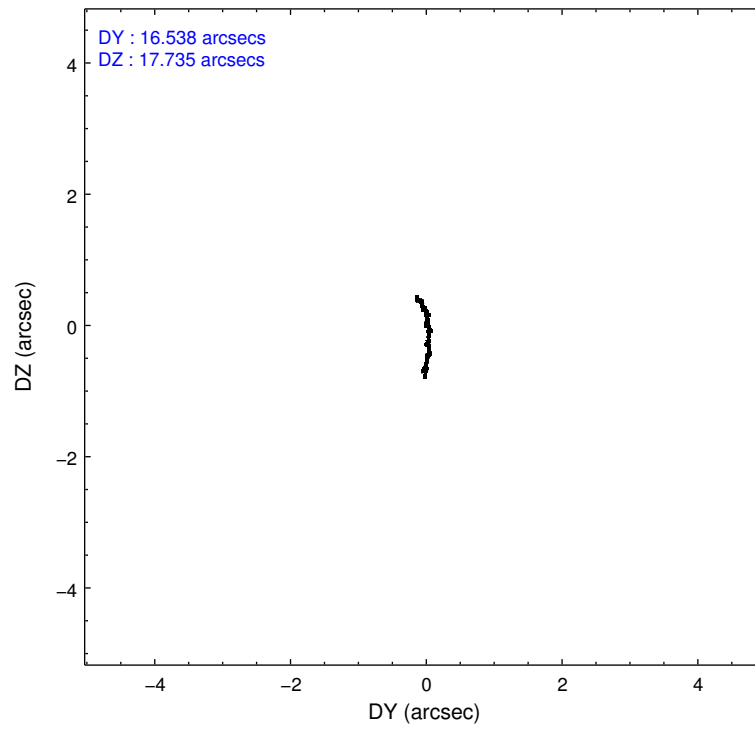
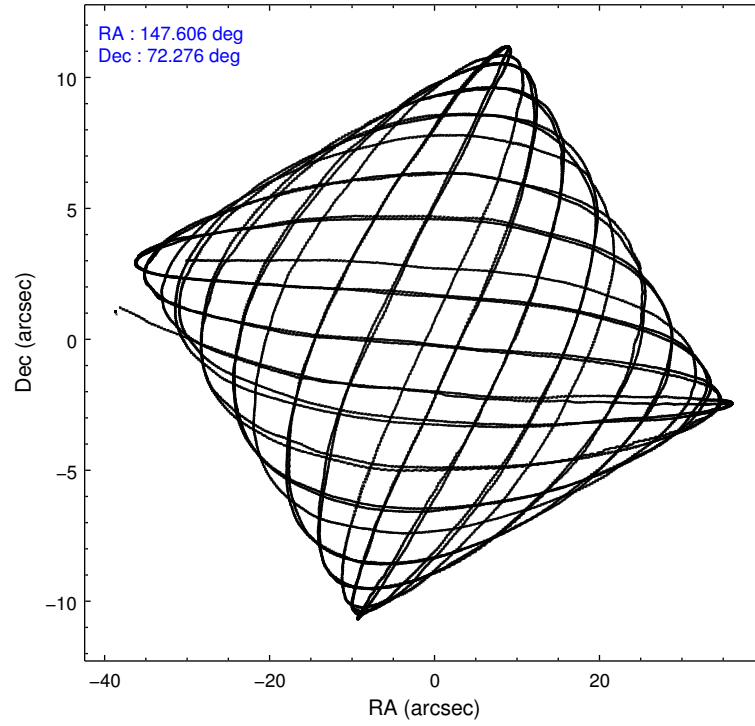
2.1.4 Events

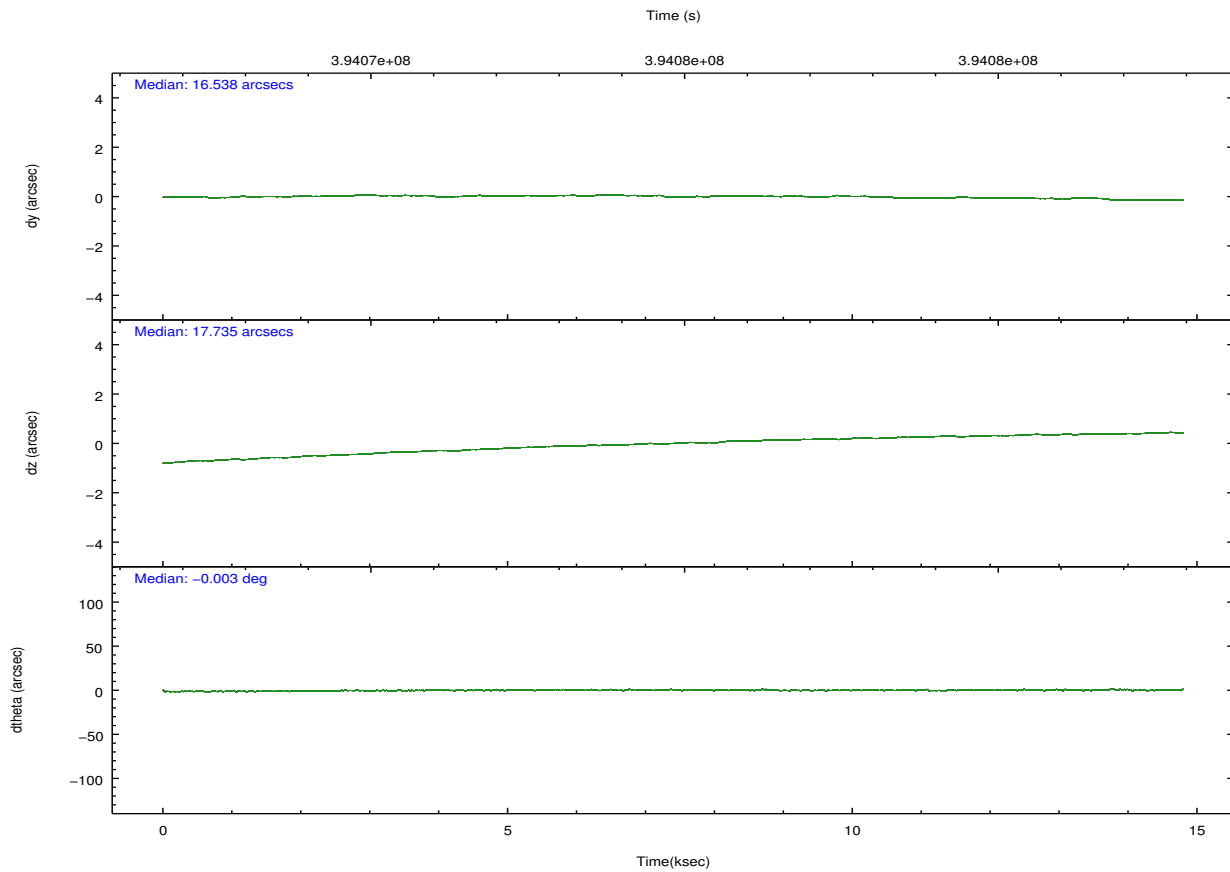
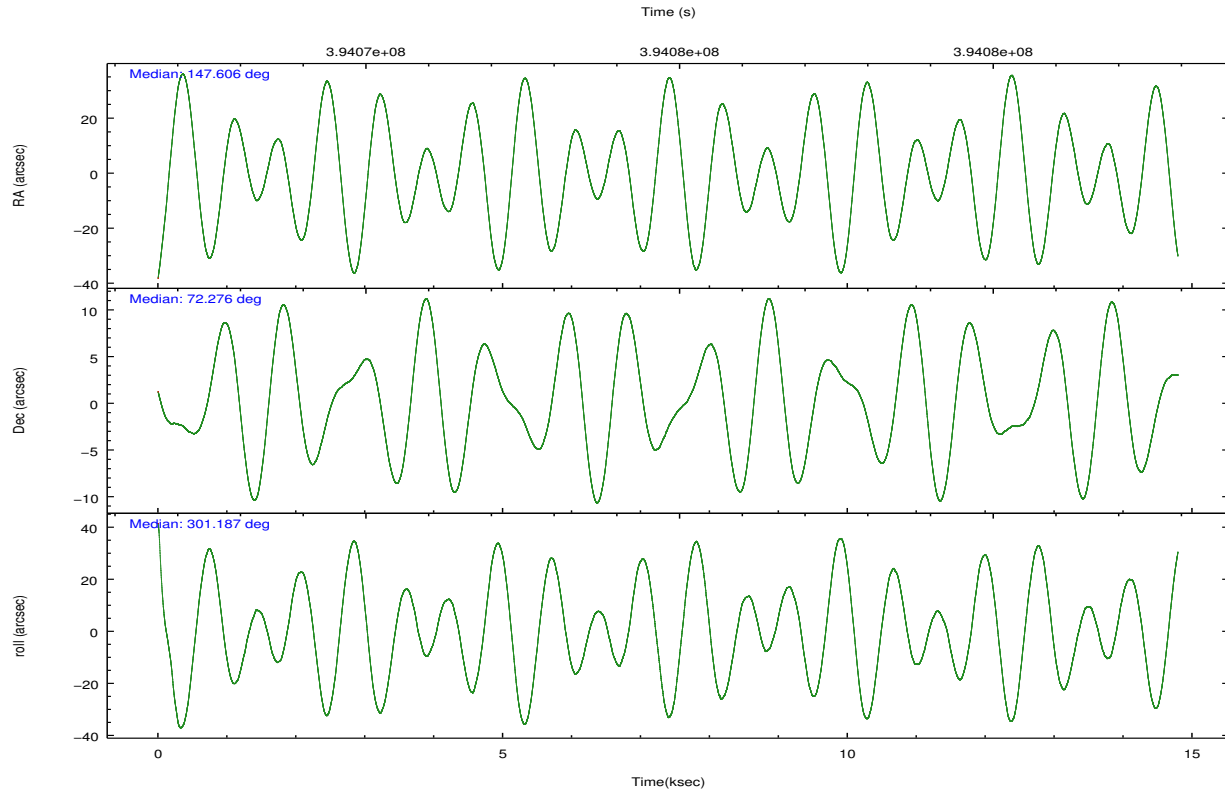
	ccd 2	ccd 3	ccd 5	ccd 6	ccd 7	ccd 8		ccd 2	ccd 3	ccd 5	ccd 6	ccd 7	ccd 8
level 1 events	109555	100426	162081	106971	126081	135728	grade 0 events	3845	3759	12521	4230	5359	10953
rejected events	98582	89931	78577	95030	68709	99807		3%	3%	7%	3%	4%	8%
rejected %	89%	89%	48%	88%	54%	73%	grade 1 events	75	75	409	51	169	110
								0%	0%	0%	0%	0%	0%
							grade 2 events	2710	2336	24702	2716	11729	8582
								2%	2%	15%	2%	9%	6%
							grade 3 events	1131	1164	3114	1241	5059	3693
								1%	1%	1%	1%	4%	2%
							grade 4 events	1155	1132	2901	1173	5173	3357
								1%	1%	1%	1%	4%	2%
							grade 5 events	3944	4604	12161	4705	13094	6845
								3%	4%	7%	4%	10%	5%
							grade 6 events	2136	2108	40285	2585	30057	9342
								1%	2%	24%	2%	23%	6%
							grade 7 events	94559	85248	65988	90270	55441	92846
								86%	84%	40%	84%	43%	68%

2.2 Compared Parameters

Parameter	Planned	Actual	Parameter	Planned	Actual
Instrument	ACIS	ACIS	Obspar format version number	7	7
Detector	ACIS-235678	ACIS-235678	Obspar file type	PREDICTED	ACTUAL
Grating	NONE	NONE	Obspar update status	NONE	UPDATED
Data mode	FAINT	FAINT	CCD I0 on	N	N
Observation mode	POINTING	POINTING	CCD I1 on	N	N
[deg] Pointing RA	147.527464	147.6068676401537	CCD I2 on	O1	Y
[deg] Pointing Dec	72.289266	72.27640886619221	CCD I3 on	O2	Y
[deg] Pointing Roll	301.110471	301.1914711907644	CCD S0 on	N	N
[mm] SIM focus pos	-0.684267	-0.6828225247311905	CCD S1 on	Y	Y
[mm] SIM defocus	0	0.001444936568705701	CCD S2 on	Y	Y
[mm] SIM translation stage pos	-190.132523	-190.1425803651734	CCD S3 on	Y	Y
[mm] SIM translation stage offset	0	0.01005778216563158	CCD S4 on	Y	Y
[s] Observation start time (MET)	394068320.184000	394066963.09268	CCD S5 on	N	N
Observation start date	2010-06-27T23:24:14	2010-06-27T23:02:43	Number of optional ACIS chips dropped	0	0
[s] Observation end time (MET)	394082220.184000	394082465.19347	On-chip summing requested	N	N
Observation end date	2010-06-28T03:15:54	2010-06-28T03:21:05	Subarray requested	NONE	NONE
Read mode	TIMED	TIMED	Alternating exposures requested	N	N
			[s] Primary exposure time	0.000000	3.2

2.3 Aspect



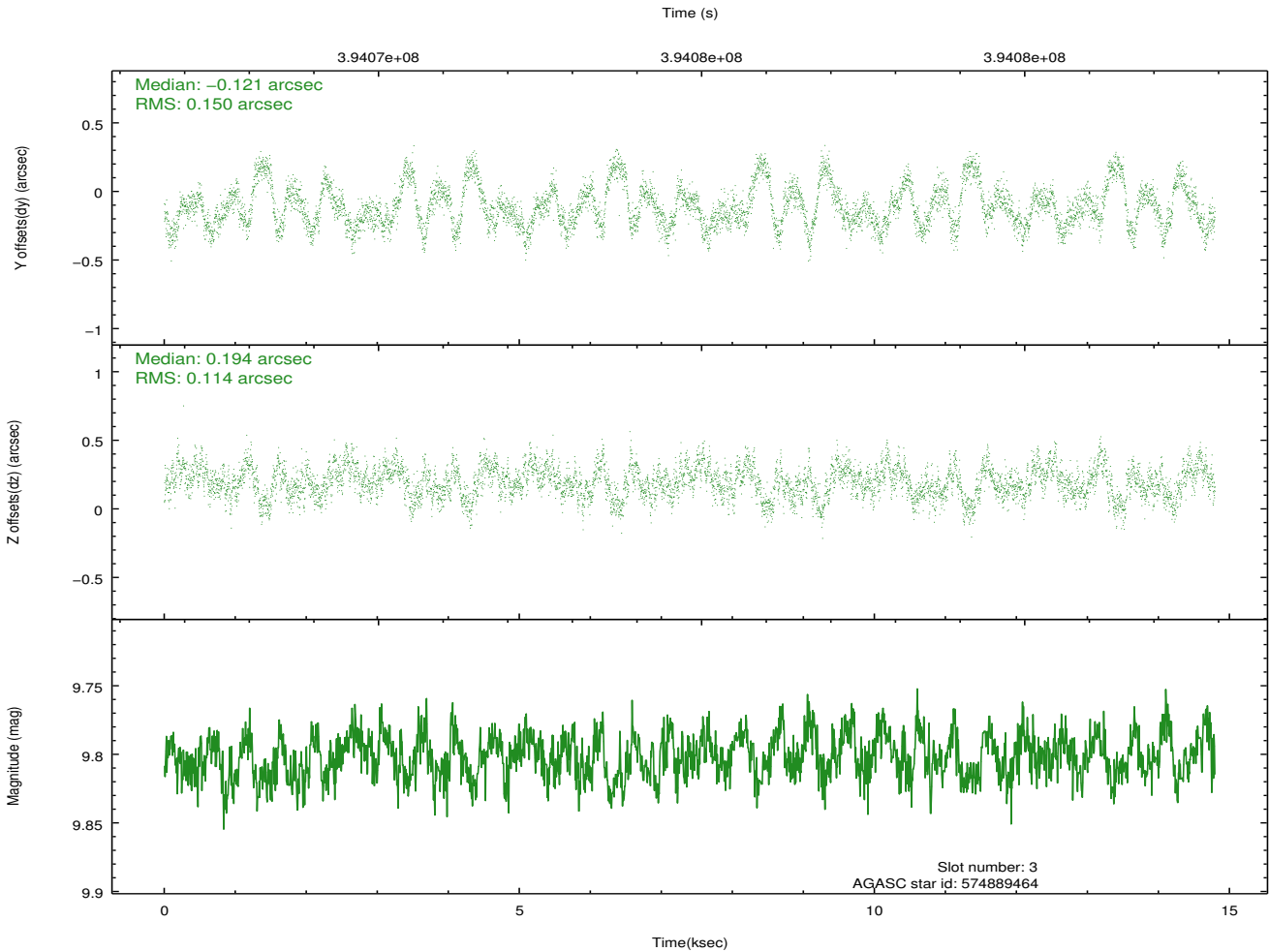
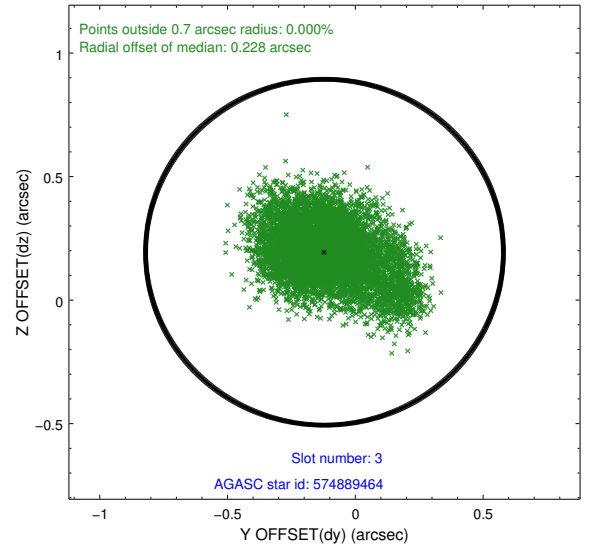
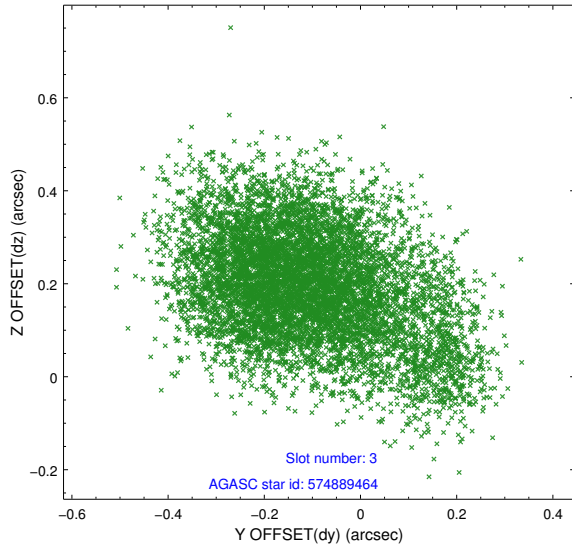


Slot Statistics

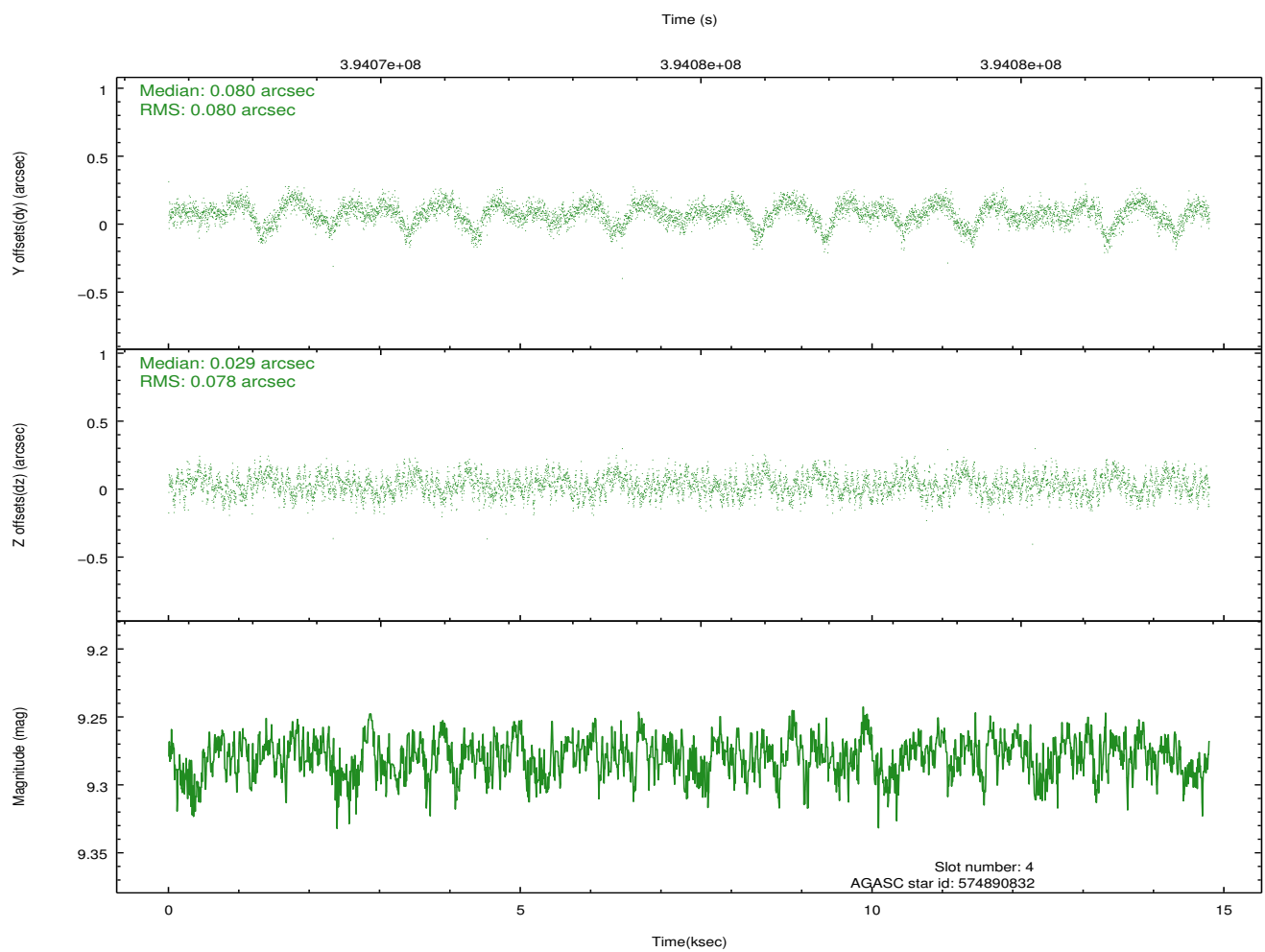
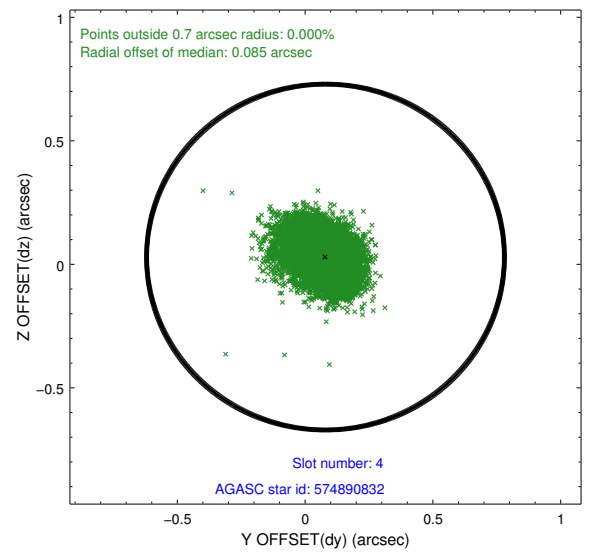
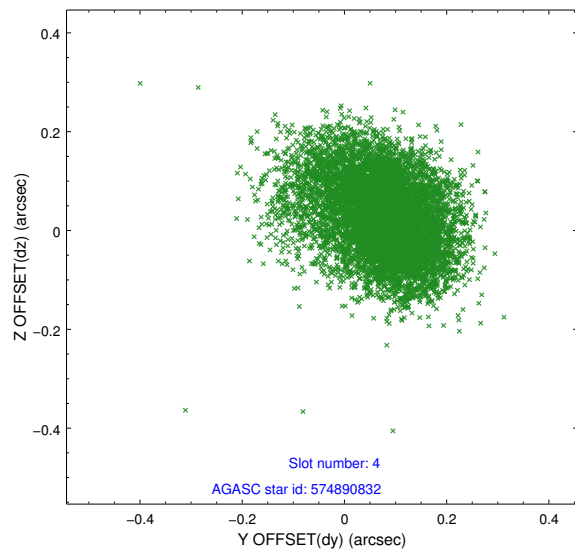
slot	status	id	mag	n_pts	med_dy	med_dz	dr1	dr2	ra	dec	mean_y	mean_z
0	FID	ACIS-S-2	6.89	3608	-0.069	-0.039	0.009	0.018	0.000000	0.000000	-769.64	-1739.10
1	FID	ACIS-S-4	6.97	3609	0.168	0.043	0.007	0.012	0.000000	0.000000	2143.77	169.08
2	FID	ACIS-S-5	7.00	3608	-0.131	0.005	0.008	0.015	0.000000	0.000000	-1822.11	163.15
3	GUIDE	574889464	9.80	7209	-0.121	0.194	0.196	0.338	146.100215	72.293602	-835.96	-1320.04
4	GUIDE	574890832	9.28	7209	0.080	0.029	0.118	0.192	145.931755	72.035994	-154.21	-1975.78
5	GUIDE	575283808	9.87	7169	-0.059	0.019	0.209	0.316	147.112904	72.766612	-1700.84	510.07
6	GUIDE	575286280	9.46	7210	-0.052	-0.137	0.143	0.212	147.072817	72.888473	-2097.28	703.30
7	GUIDE	574891216	10.08	7196	0.187	-0.113	0.241	0.448	148.221294	71.727795	2131.60	-371.05

2.4 Star Slots

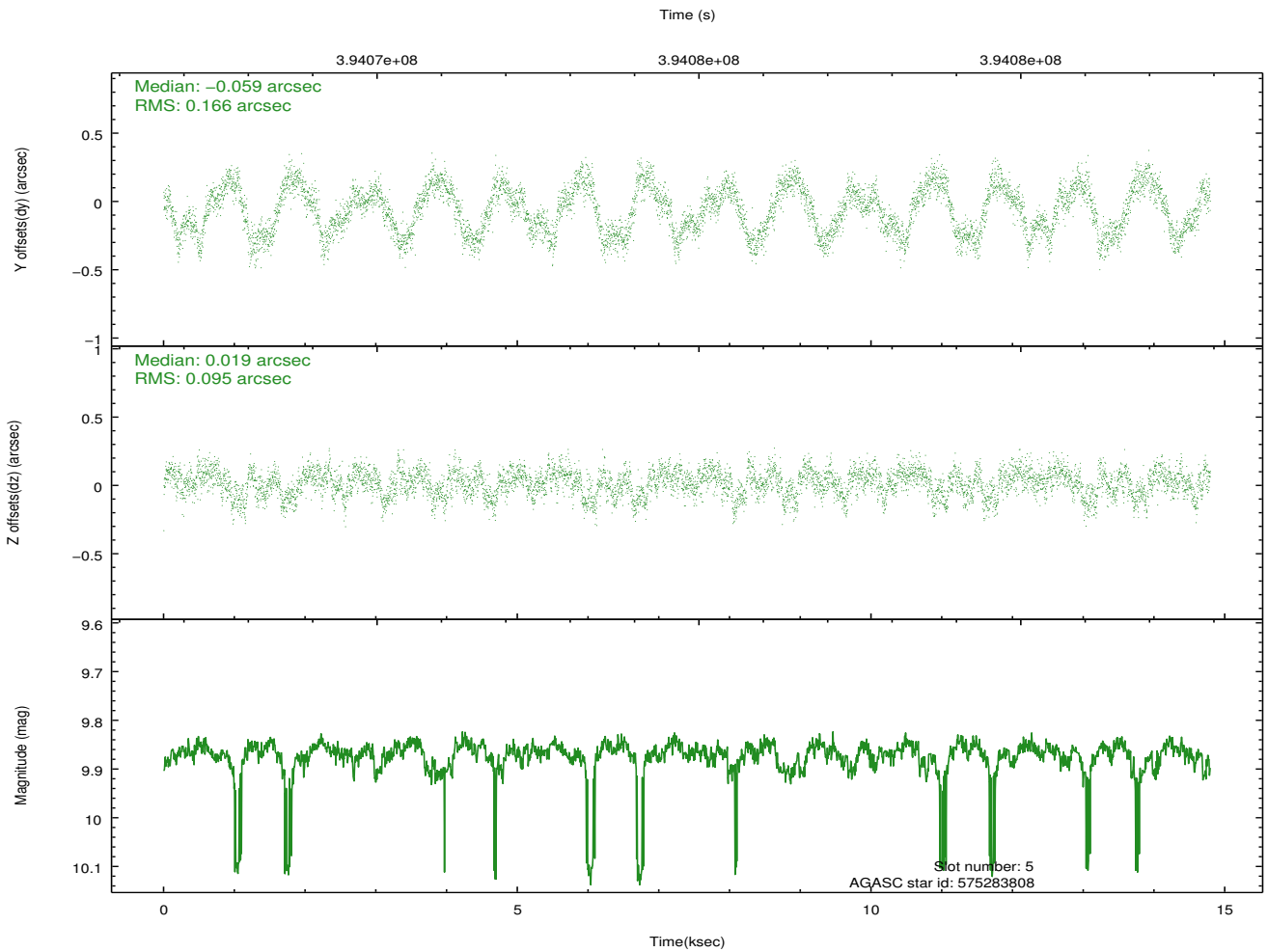
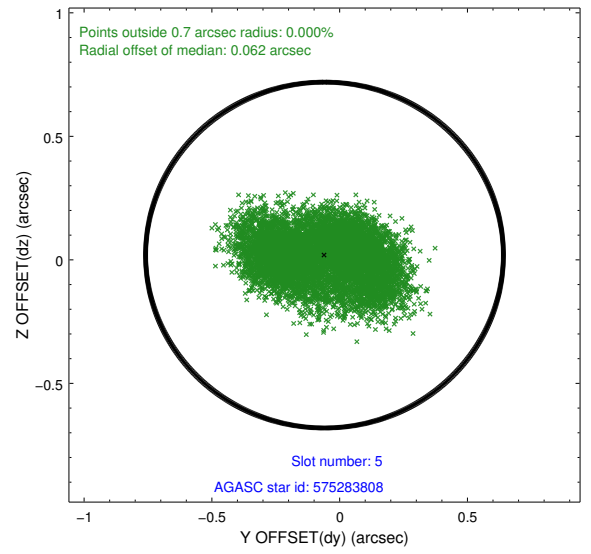
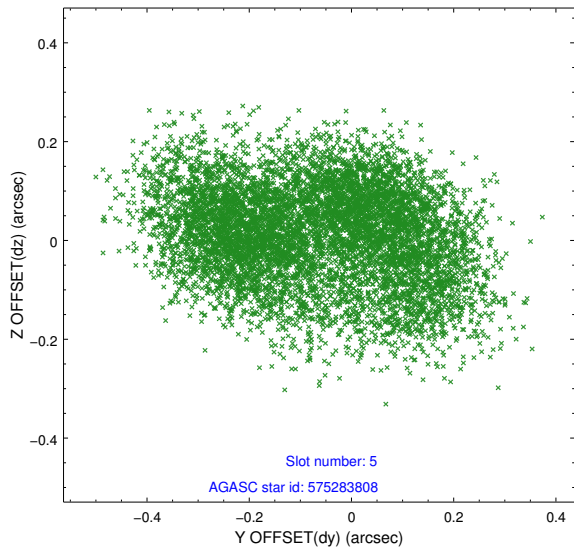
2.4.1 Slot 3



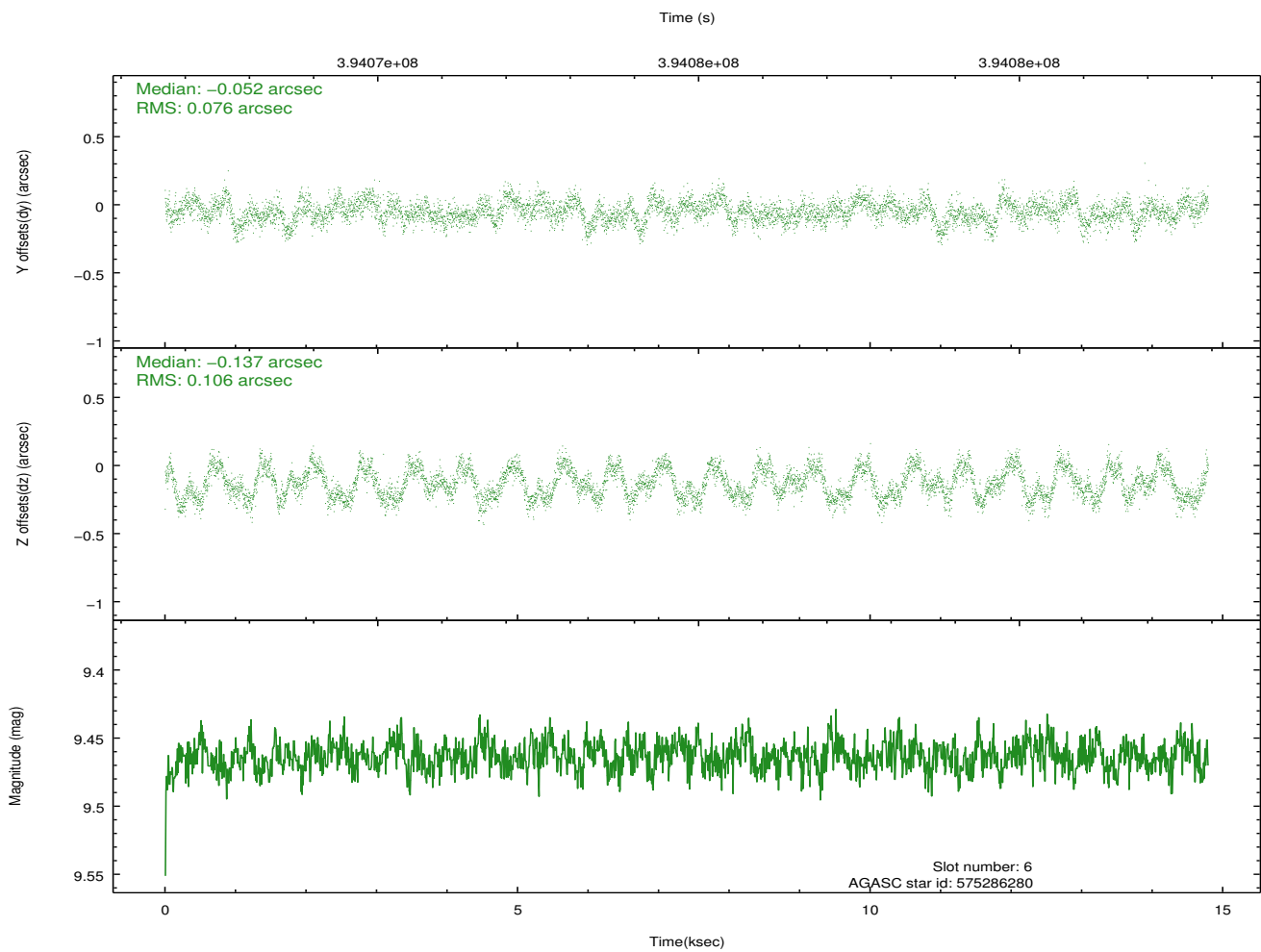
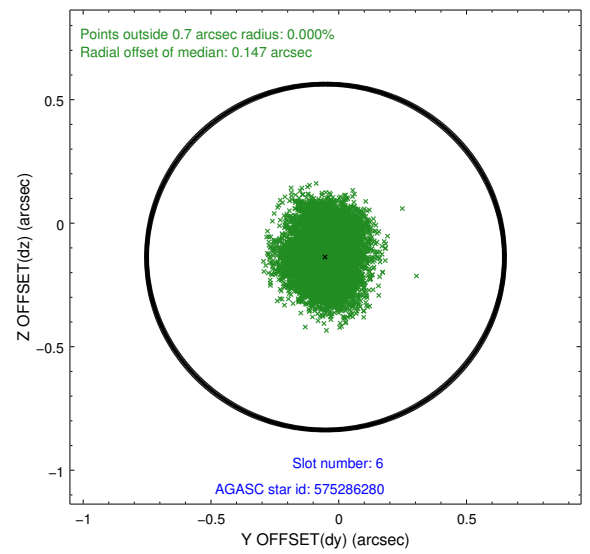
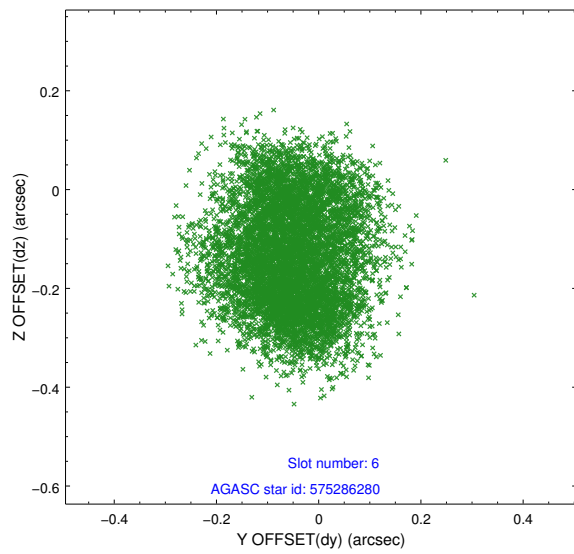
2.4.2 Slot 4



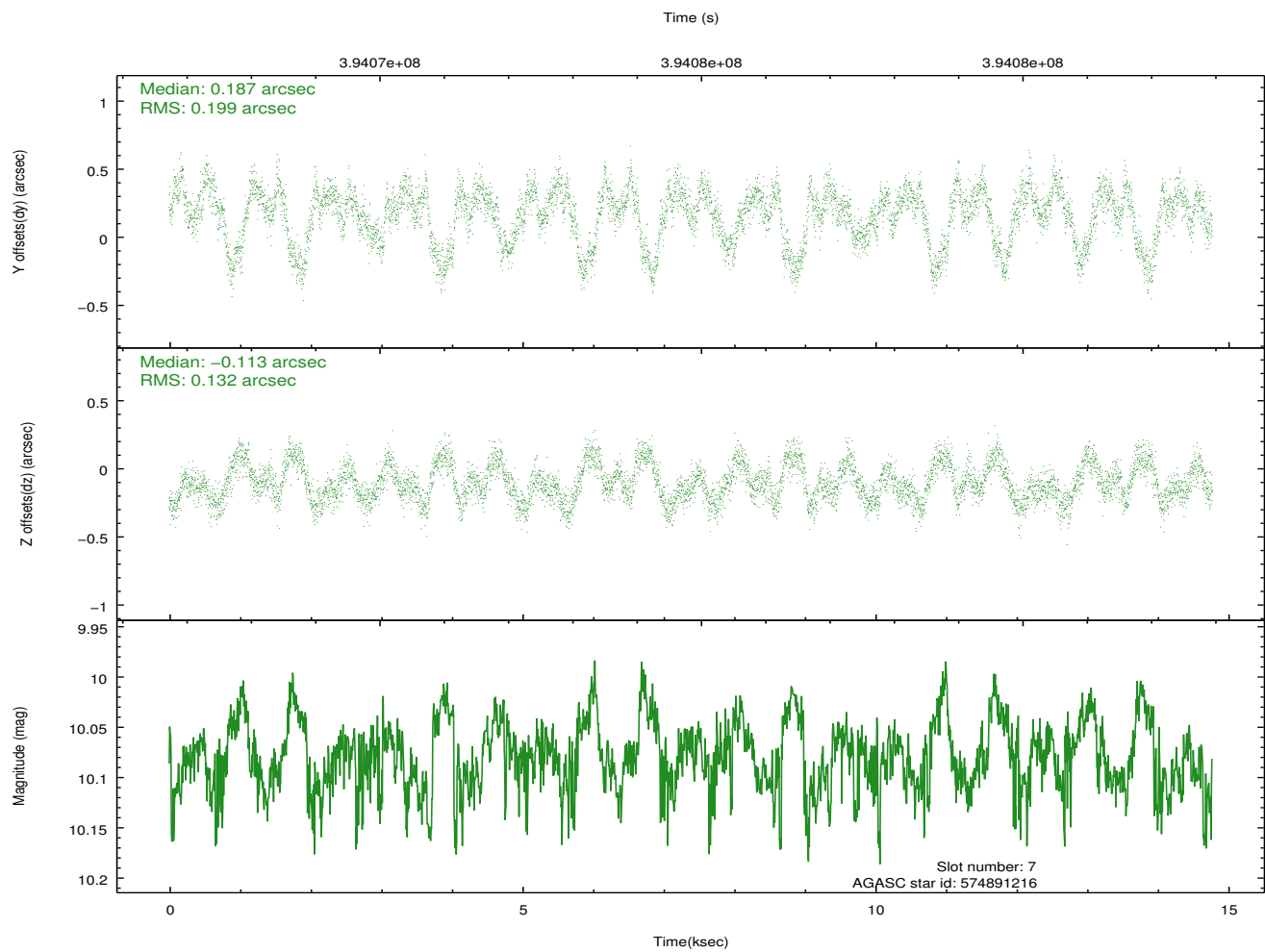
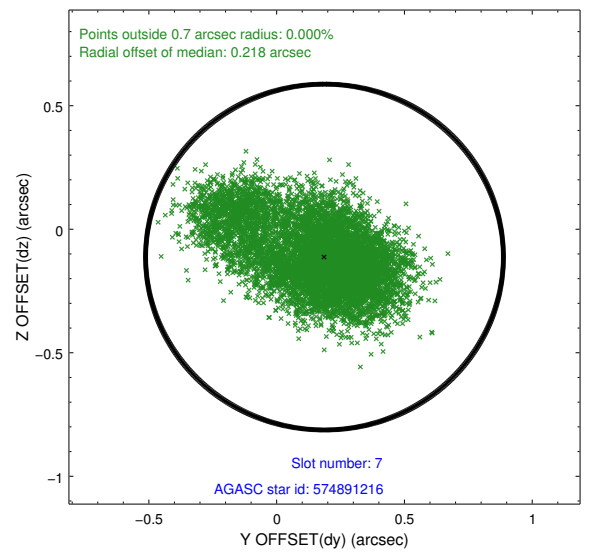
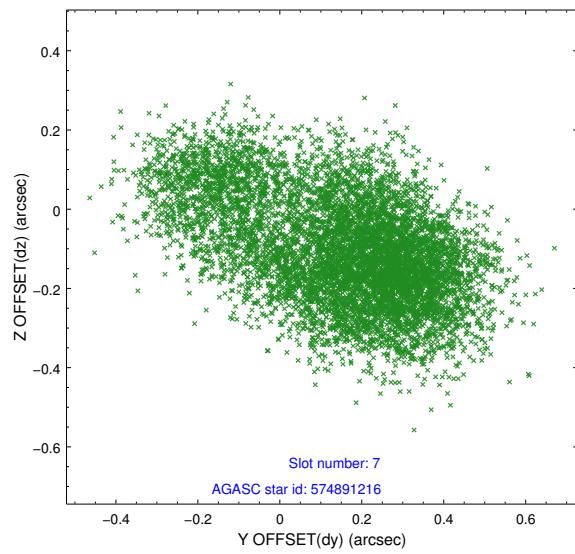
2.4.3 Slot 5



2.4.4 Slot 6

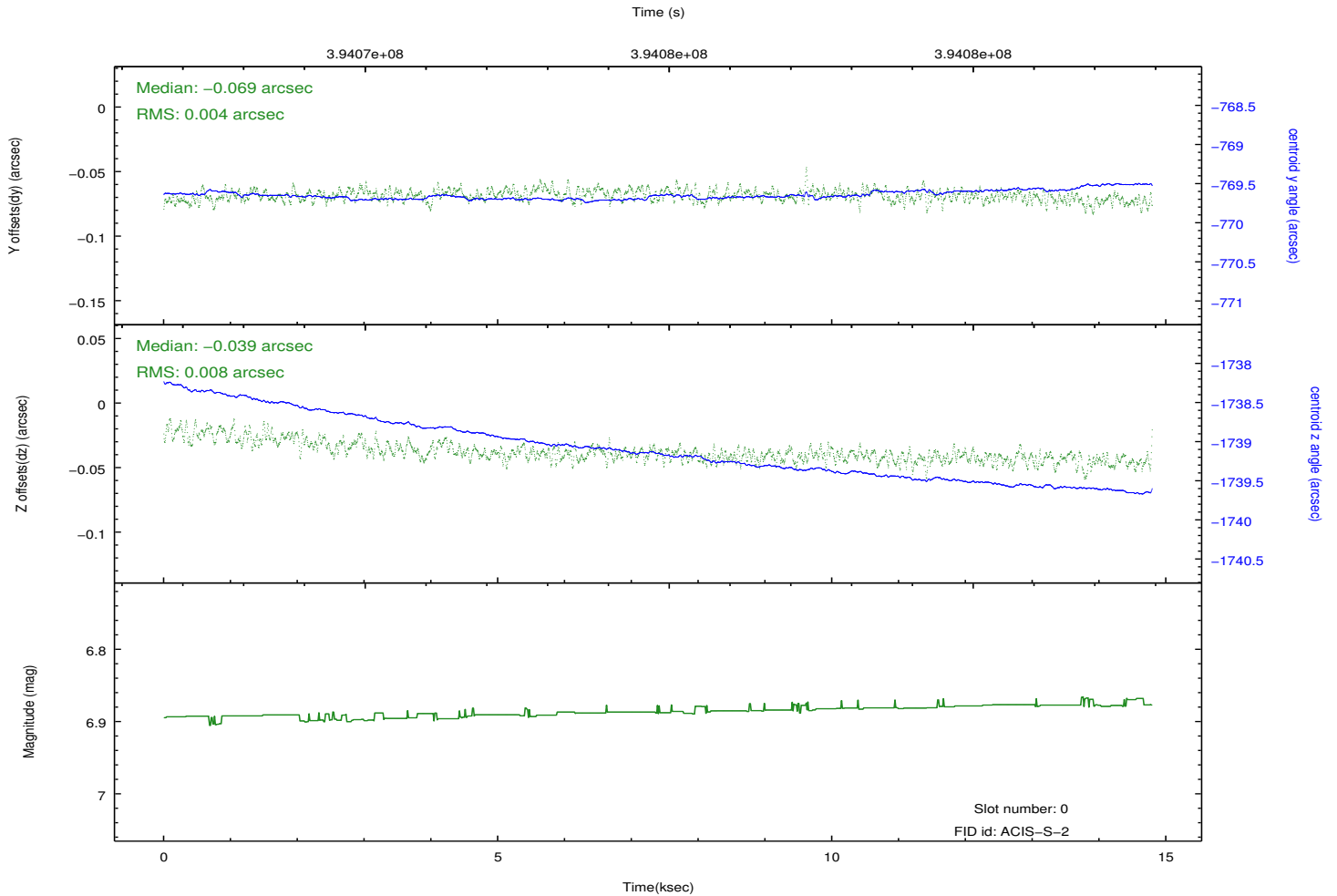
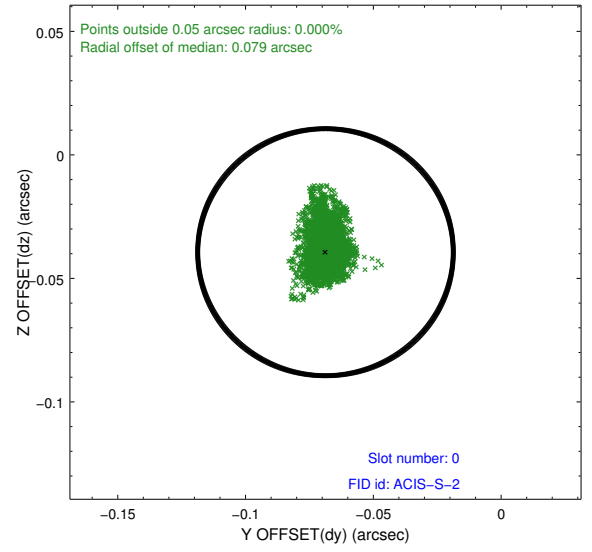
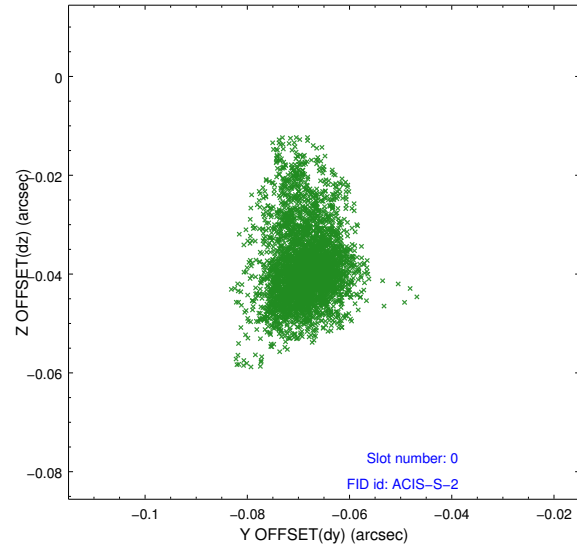


2.4.5 Slot 7

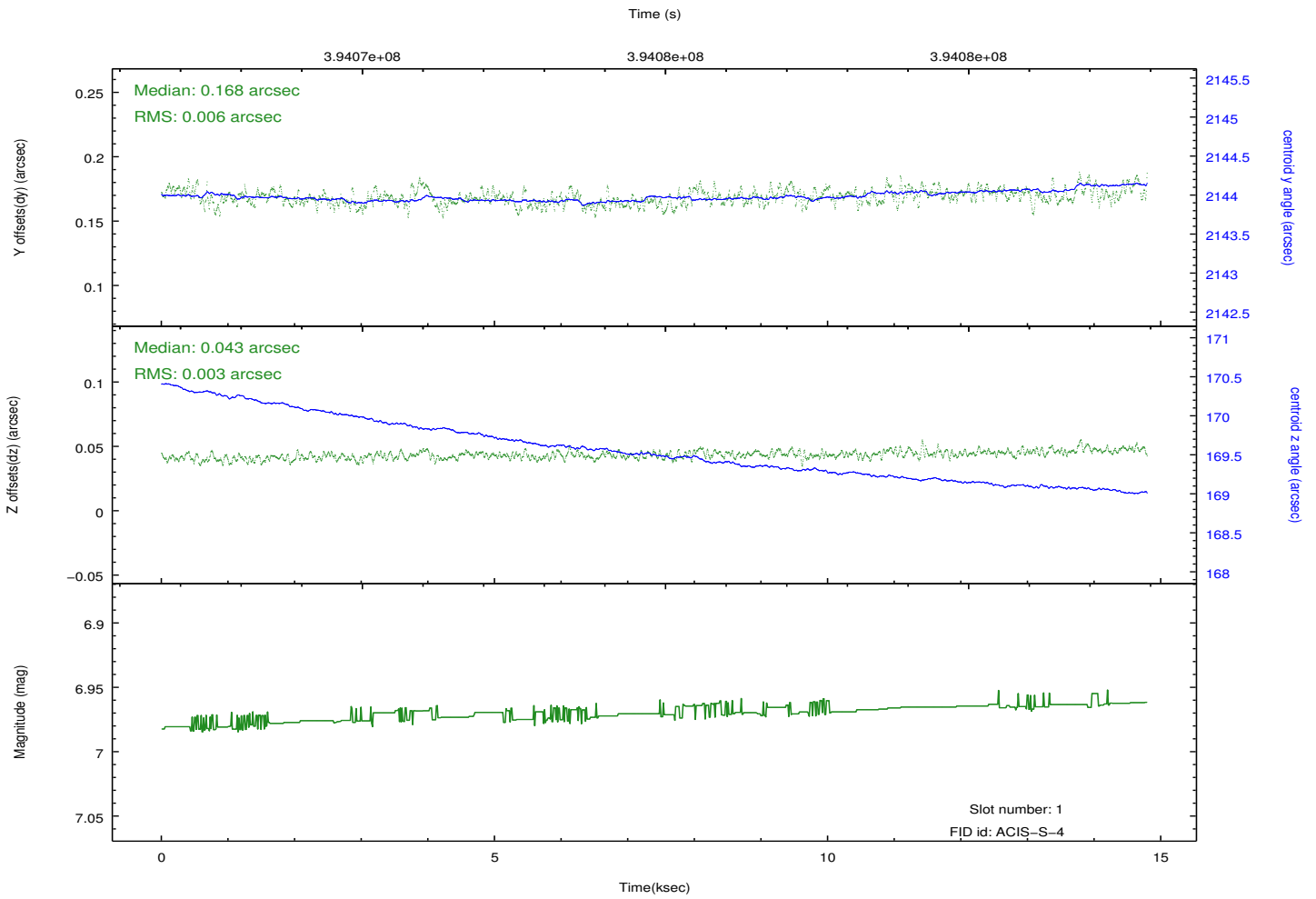
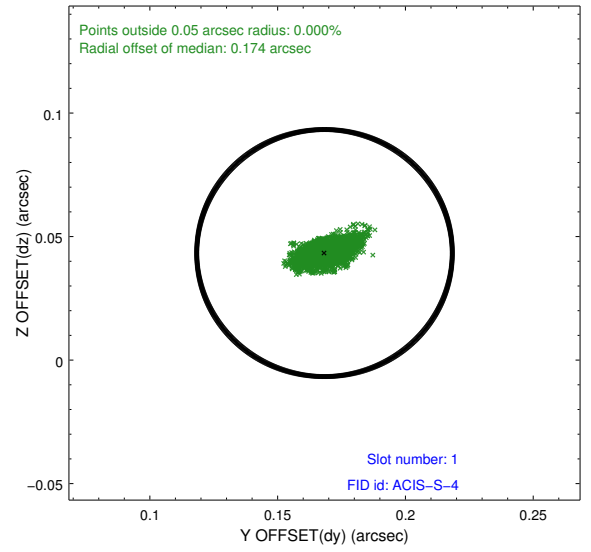
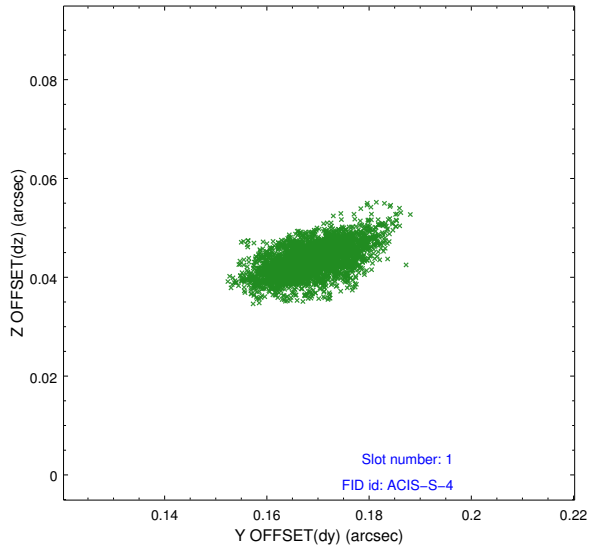


2.5 FID Slots

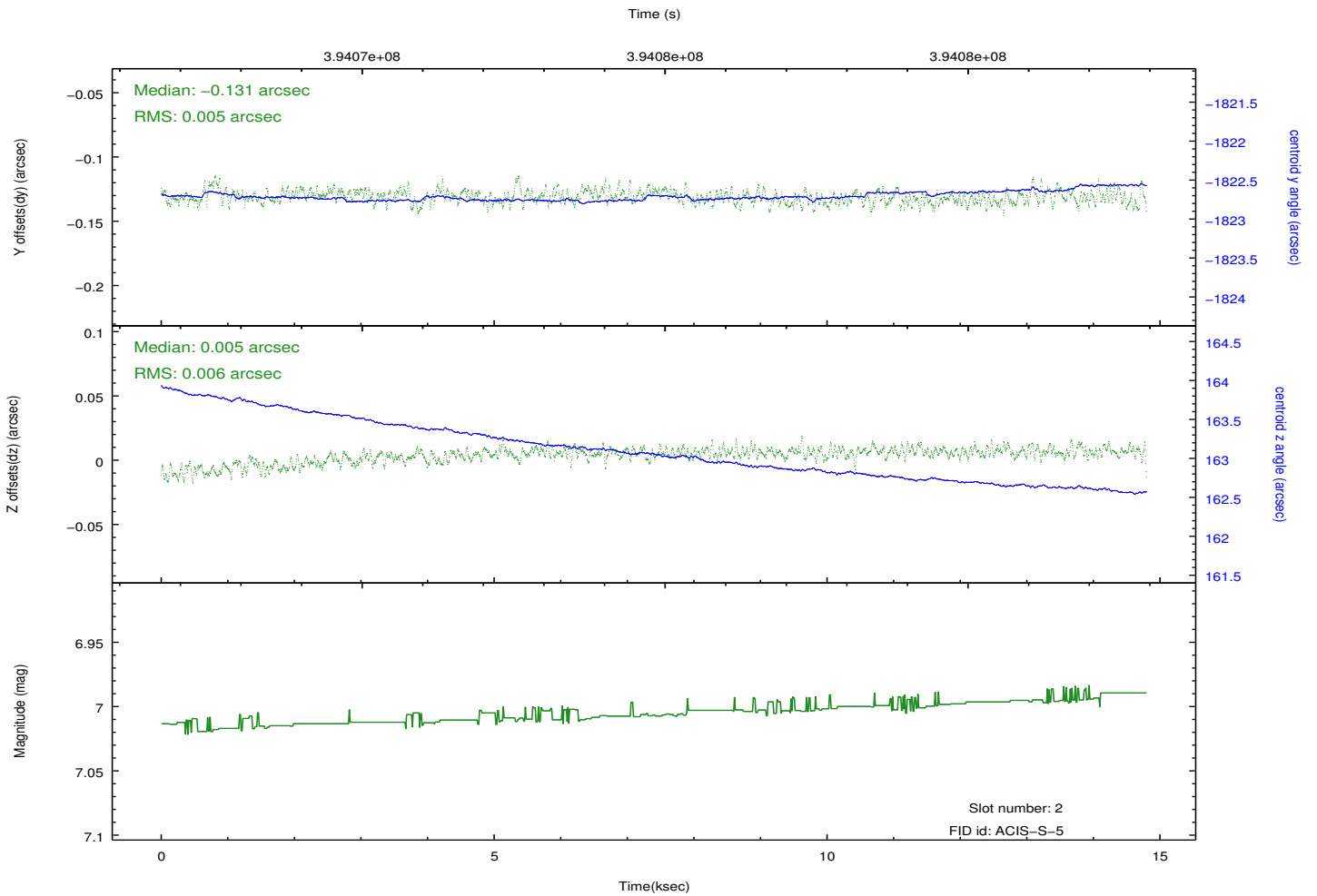
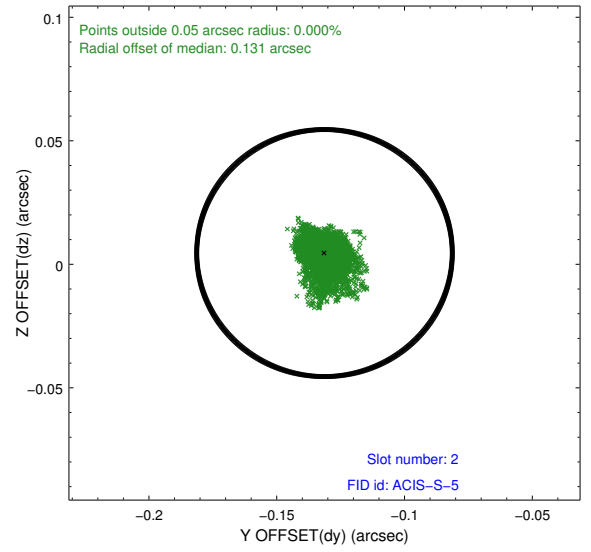
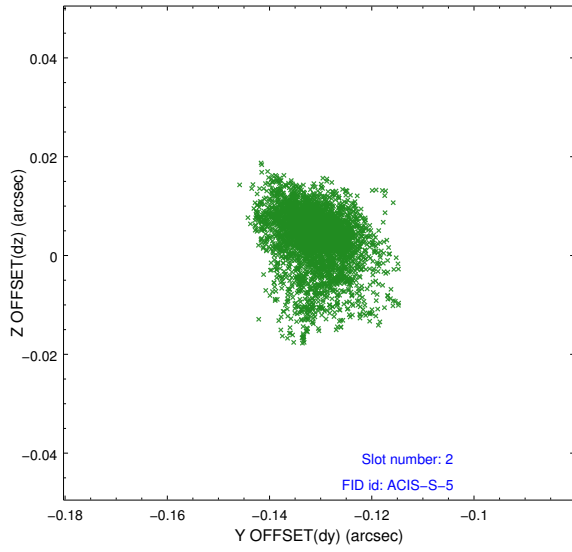
2.5.1 Slot 0



2.5.2 Slot 1



2.5.3 Slot 2



A Summary

A.1 Status

V&V Scientist	Jen Lauer
V&V Date (YYYY-MM-DD)	2012.07.06
V&V Edition	1
V&V Disposition and Status	OK
V&V Charge Time	13.950966586232

A.2 Comments