

V&V Reference Report

L2 ASCDS Version : 8.4.5

Observation 11679 - L2 Version 2
Chandra X-Ray Center

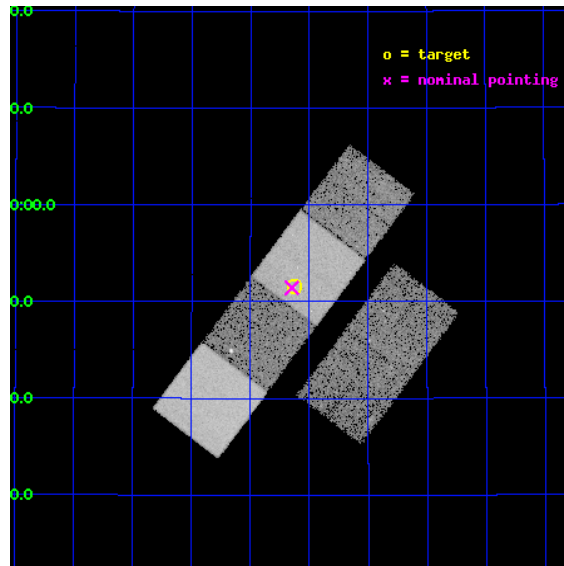
L2 Processing Date : Jul 3 2012

Contents

1	Front	2
2	OBI	3
2.1	OBI	3
2.1.1	Images	3
2.1.2	Bias	3
2.1.3	Parameters	4
2.1.4	Events	4
2.2	Compared Parameters	5
2.3	Aspect	6
2.4	Star Slots	9
2.4.1	Slot 3	9
2.4.2	Slot 4	10
2.4.3	Slot 5	11
2.4.4	Slot 6	12
2.4.5	Slot 7	13
2.5	FID Slots	14
2.5.1	Slot 0	14
2.5.2	Slot 1	15
2.5.3	Slot 2	16
A	Summary	17
A.1	Status	17
A.2	Comments	17

1 Front

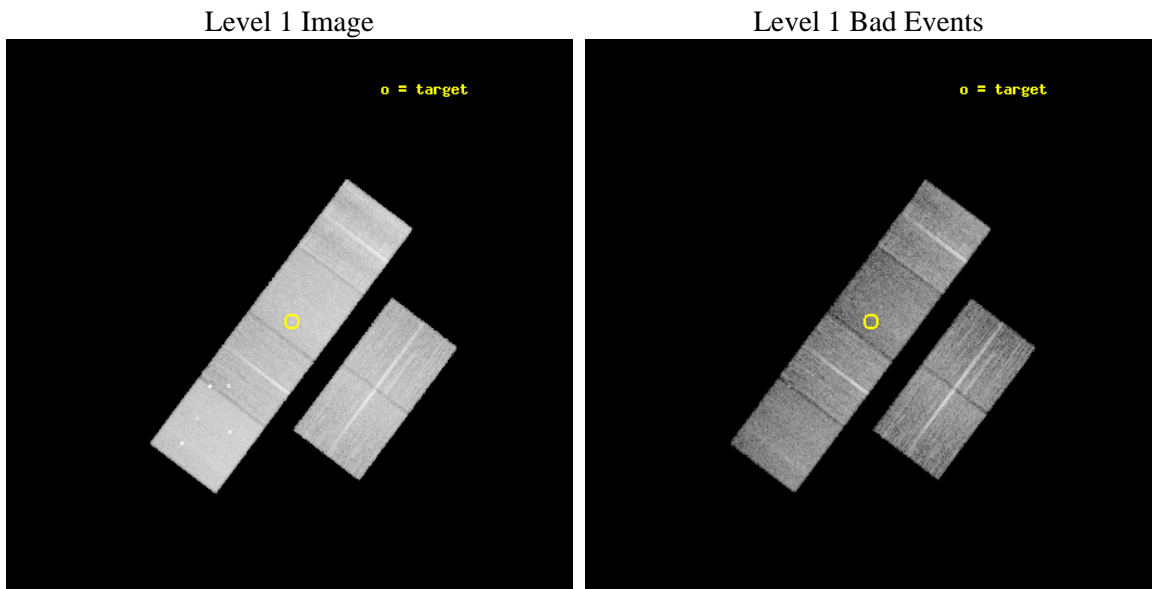
seq_num	702265	Sequence number
obs_id	11679	Observation id
title	Investigating the Nuclear Activity of Barred and Unbarred Spiral Galaxies	Proposal title
observer	Dr Leigh Jenkins	Principal investigator
object	NGC 5614	Source name
dtcycle	0	
cycle	P	events from which exps? Prim/Second/Both
ra_targ	216.031625	Observer's specified target RA [deg]
dec_targ	34.858861	Observer's specified target Dec [deg]
ra_nom	216.03709951456	Nominal RA [deg]
dec_nom	34.857099971543	Nominal Dec [deg]
roll_nom	306.93133123456	Nominal Roll [deg]
revision	2	Processing version of data
ontime	14754.857892513	Sum of GTIs [s]
livetime	14568.022997569	Livetime [s]
ontime2	14754.898962379	Sum of GTIs [s]
ontime3	14754.734772503	Sum of GTIs [s]
ontime5	14754.81685251	Sum of GTIs [s]
ontime6	14754.775842369	Sum of GTIs [s]
ontime7	14754.857892513	Sum of GTIs [s]
ontime8	14748.211771905	Sum of GTIs [s]
l2events	176160	Number of level 2 events



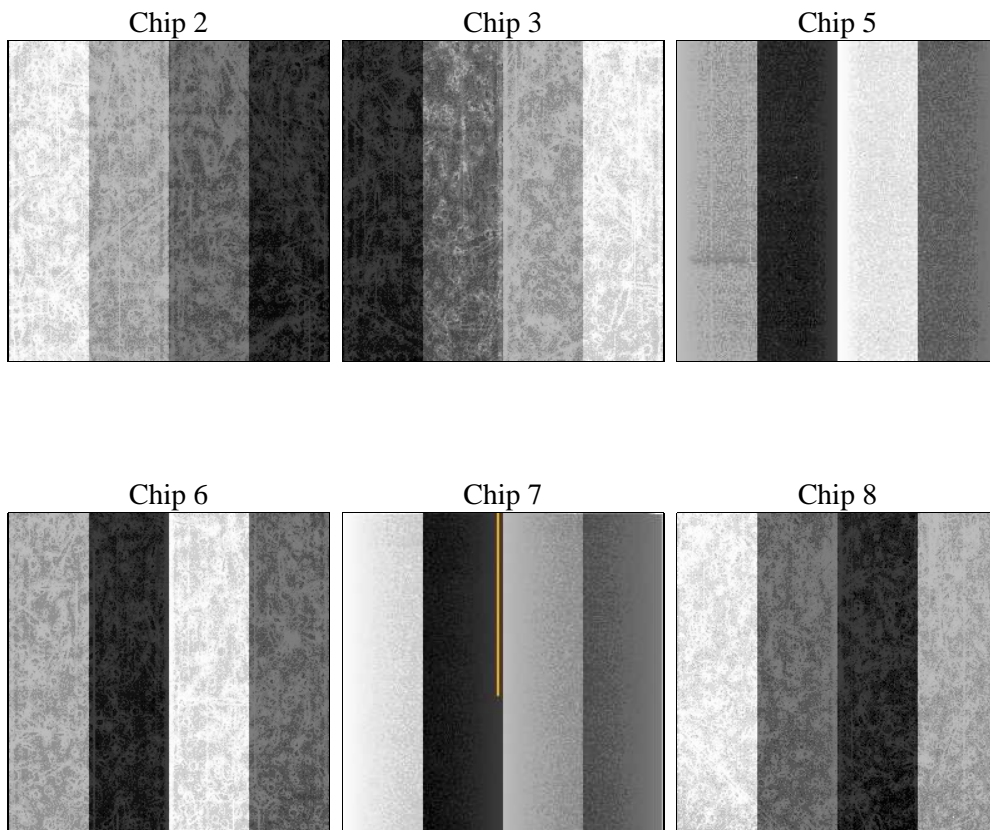
2 OBI

2.1 OBI

2.1.1 Images



2.1.2 Bias



2.1.3 Parameters

obi_num	0	Obi number	sched_exp_time	15000.000000	[s] Scheduled observation exposure time
ascdsver	8.4.5	Processing system revision	ontime	14754.857892513	Sum of GTIs [s]
caldbver	4.5.0	 	ontime2	14754.898962379	Sum of GTIs [s]
date	2012-07-04T00:03:52	Date and time of file creation	ontime3	14754.734772503	Sum of GTIs [s]
revision	2	Processing version of data	ontime5	14754.81685251	Sum of GTIs [s]
			ontime6	14754.775842369	Sum of GTIs [s]
			ontime7	14754.857892513	Sum of GTIs [s]
			ontime8	14748.211771905	Sum of GTIs [s]
			l1events	755120	Number of level 1 events

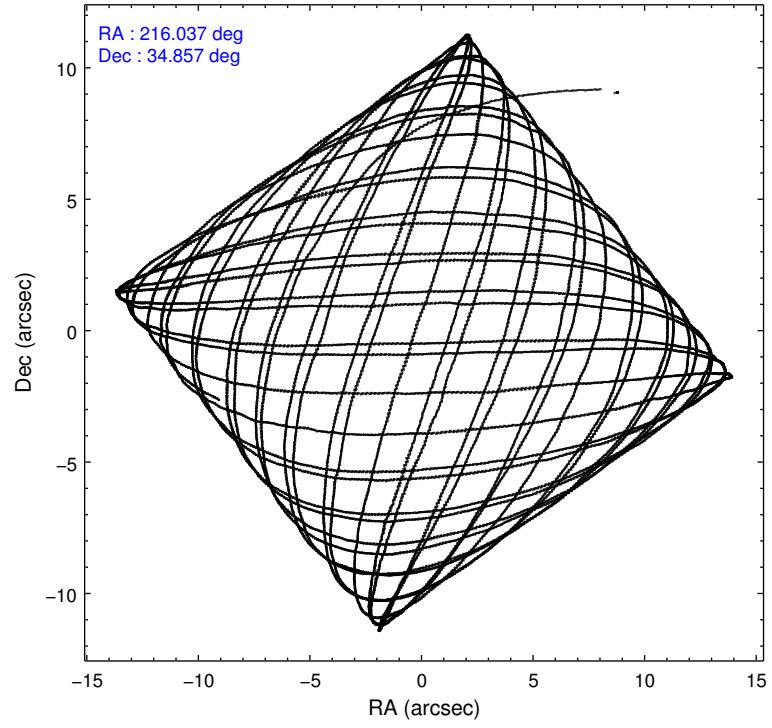
2.1.4 Events

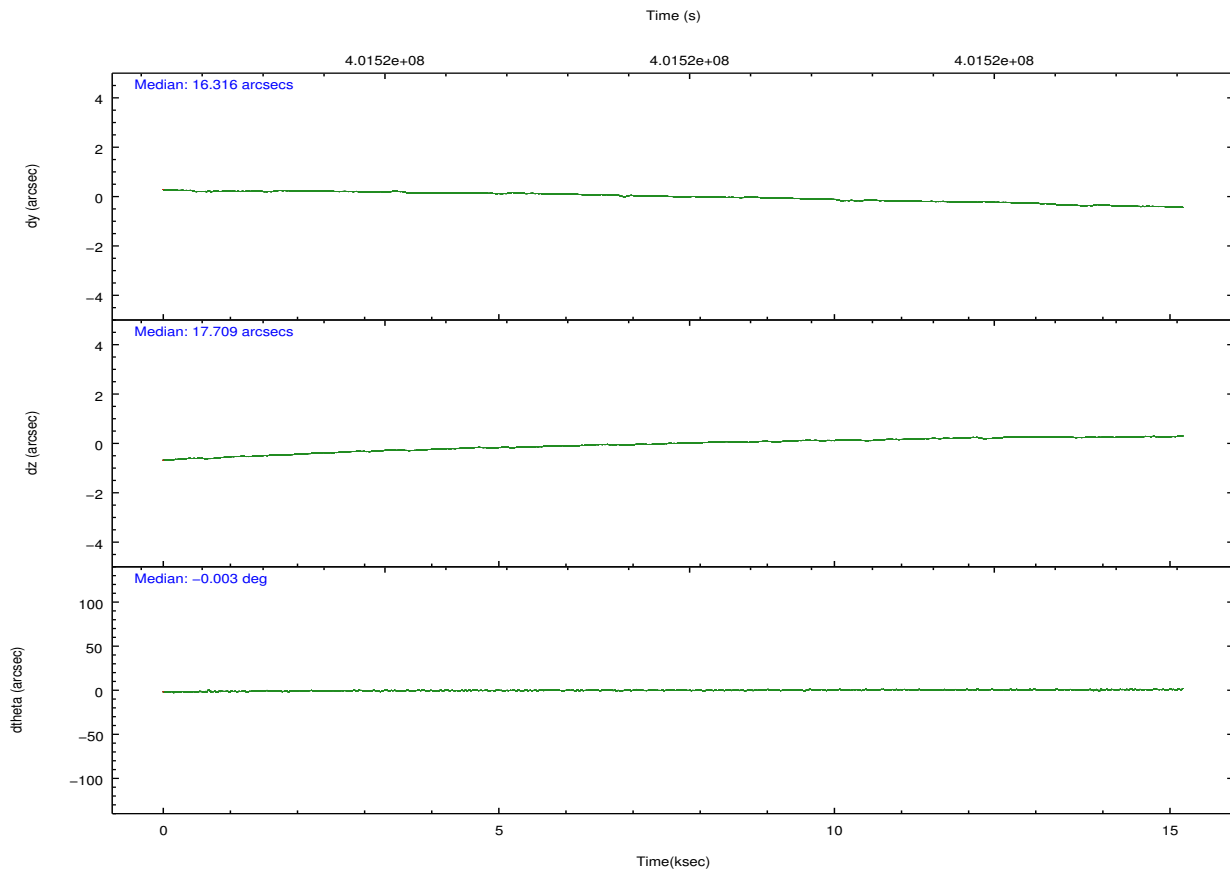
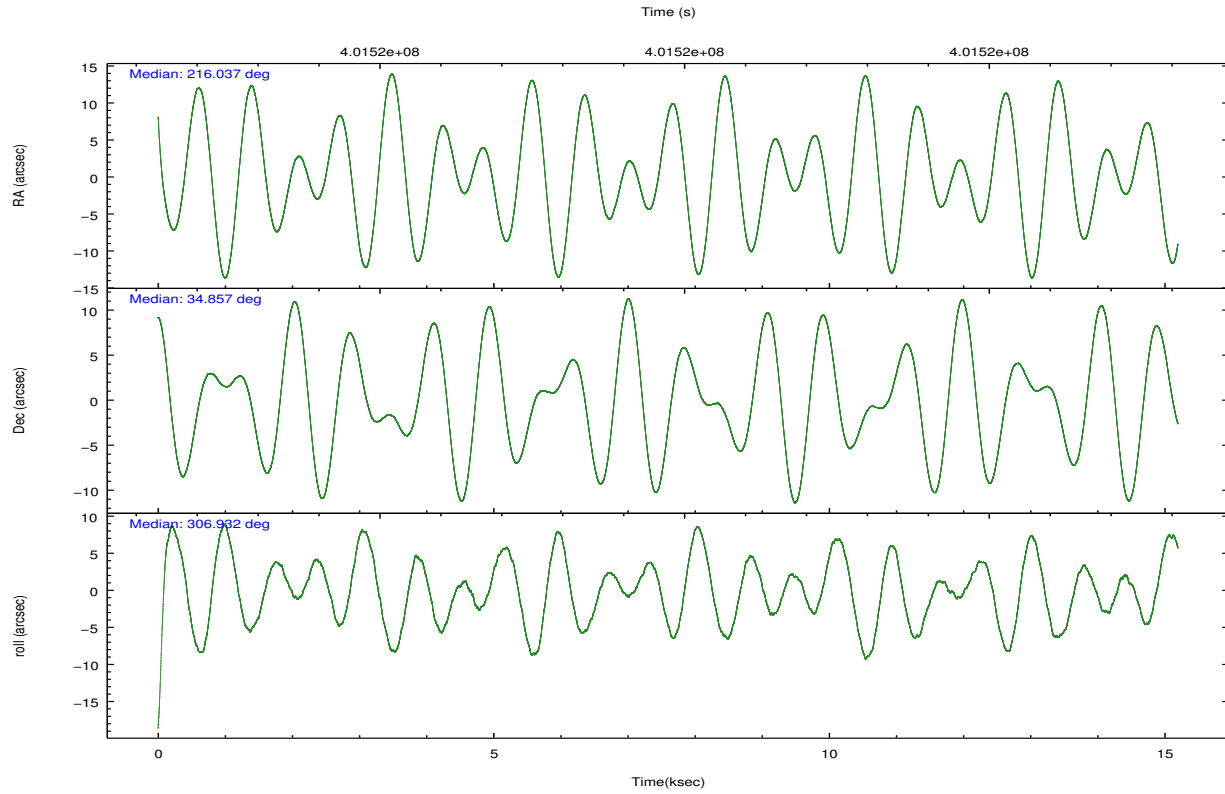
	ccd 2	ccd 3	ccd 5	ccd 6	ccd 7	ccd 8		ccd 2	ccd 3	ccd 5	ccd 6	ccd 7	ccd 8
level 1 events	108534	101110	162395	109199	131788	142094	grade 0 events	4072	3791	7501	4560	5600	11218
rejected events	97053	90306	82376	96756	72228	104702		3%	3%	4%	4%	4%	7%
rejected %	89%	89%	50%	88%	54%	73%	grade 1 events	77	68	361	60	168	128
								0%	0%	0%	0%	0%	0%
							grade 2 events	2823	2455	24336	2706	12295	8588
								2%	2%	14%	2%	9%	6%
							grade 3 events	1178	1181	3114	1265	5303	3909
								1%	1%	1%	1%	4%	2%
							grade 4 events	1222	1212	2950	1291	5291	3655
								1%	1%	1%	1%	4%	2%
							grade 5 events	4151	4749	12610	4845	13603	7121
								3%	4%	7%	4%	10%	5%
							grade 6 events	2188	2169	42139	2624	31077	10027
								2%	2%	25%	2%	23%	7%
							grade 7 events	92823	85485	69384	91848	58451	97448
								85%	84%	42%	84%	44%	68%

2.2 Compared Parameters

Parameter	Planned	Actual	Parameter	Planned	Actual
Instrument	ACIS	ACIS	Obspar format version number	7	7
Detector	ACIS-235678	ACIS-235678	Obspar file type	PREDICTED	ACTUAL
Grating	NONE	NONE	Obspar update status	NONE	UPDATED
Data mode	FAINT	FAINT	CCD I0 on	N	N
Observation mode	POINTING	POINTING	CCD I1 on	N	N
[deg] Pointing RA	216.006286	216.037099514565	CCD I2 on	O1	Y
[deg] Pointing Dec	34.867456	34.85709997154261	CCD I3 on	O2	Y
[deg] Pointing Roll	306.792333	306.9313312345622	CCD S0 on	N	N
[mm] SIM focus pos	-0.684267	-0.6828225247311905	CCD S1 on	Y	Y
[mm] SIM defocus	0	0.001444936568705701	CCD S2 on	Y	Y
[mm] SIM translation stage pos	-190.132523	-190.1425803651734	CCD S3 on	Y	Y
[mm] SIM translation stage offset	0	0.01005778216563158	CCD S4 on	Y	Y
[s] Observation start time (MET)	401512321.184000	401511420.08623	CCD S5 on	N	N
Observation start date	2010-09-22T03:10:55	2010-09-22T02:57:00	Number of optional ACIS chips dropped	0	0
[s] Observation end time (MET)	401527321.184000	401528232.13709	On-chip summing requested	N	N
Observation end date	2010-09-22T07:20:55	2010-09-22T07:37:12	Subarray requested	NONE	NONE
Read mode	TIMED	TIMED	Alternating exposures requested	N	N
			[s] Primary exposure time	0.000000	3.2

2.3 Aspect



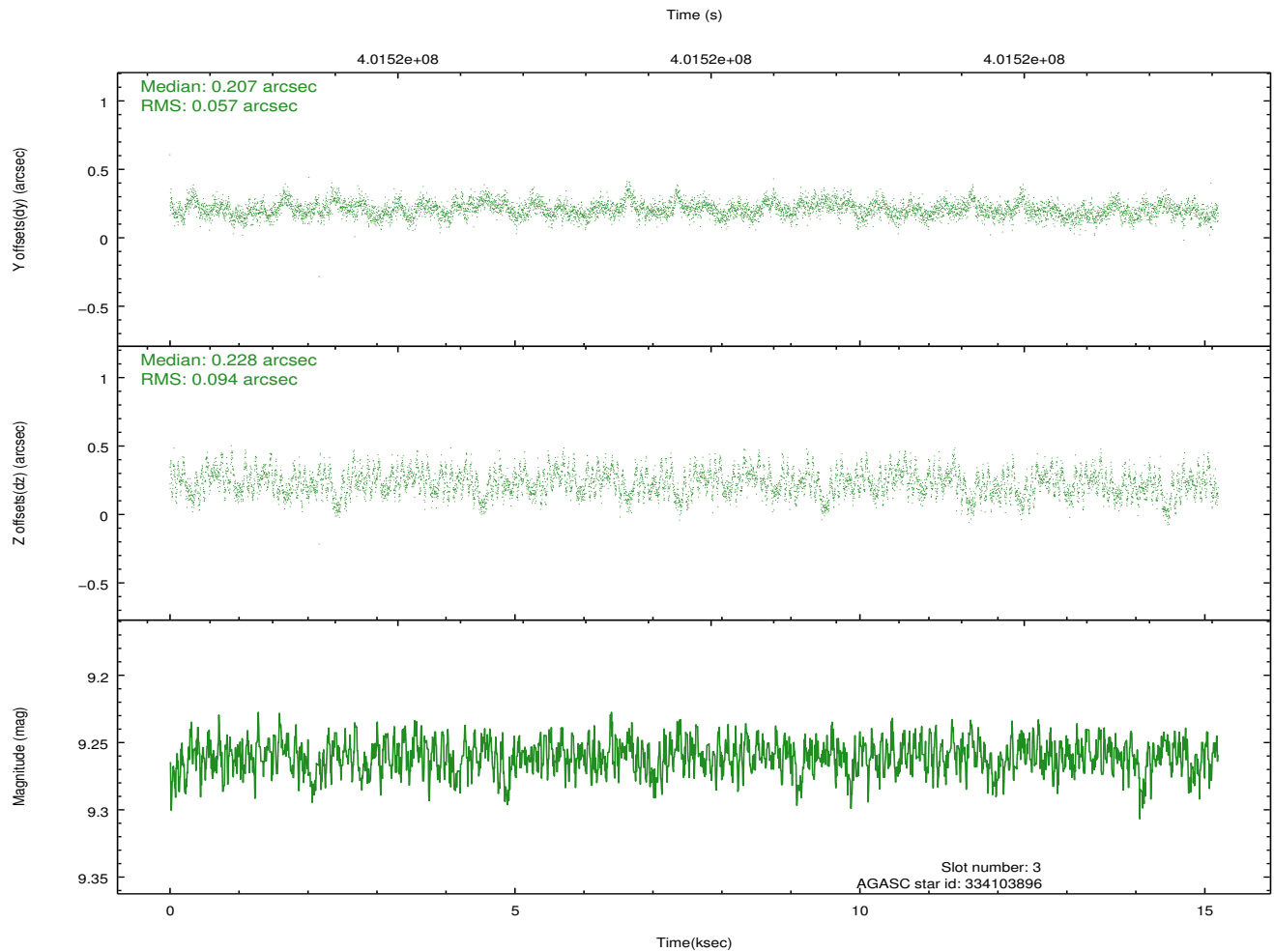
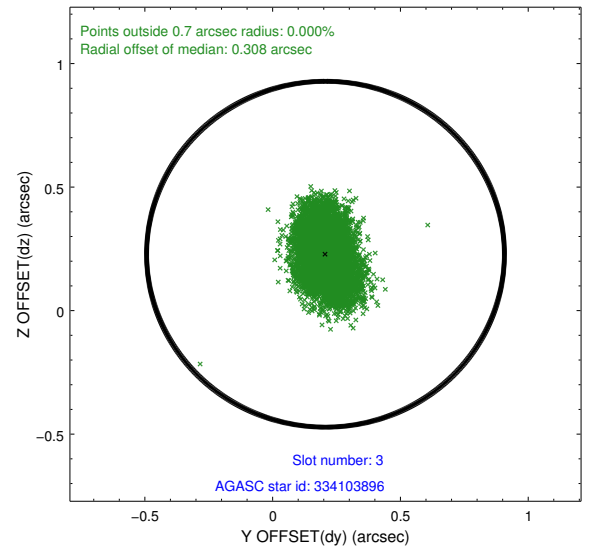
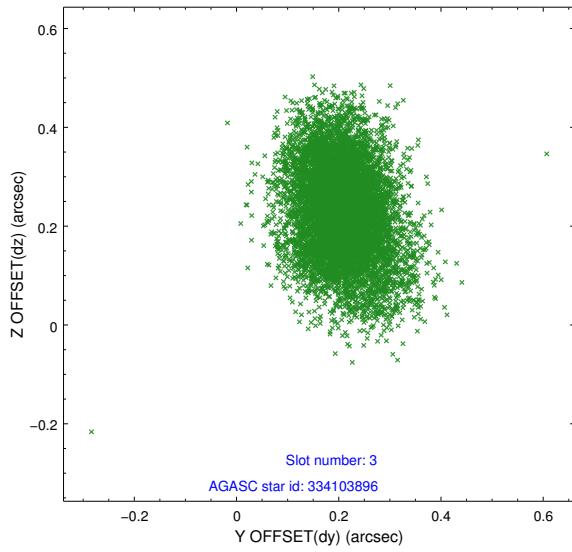


Slot Statistics

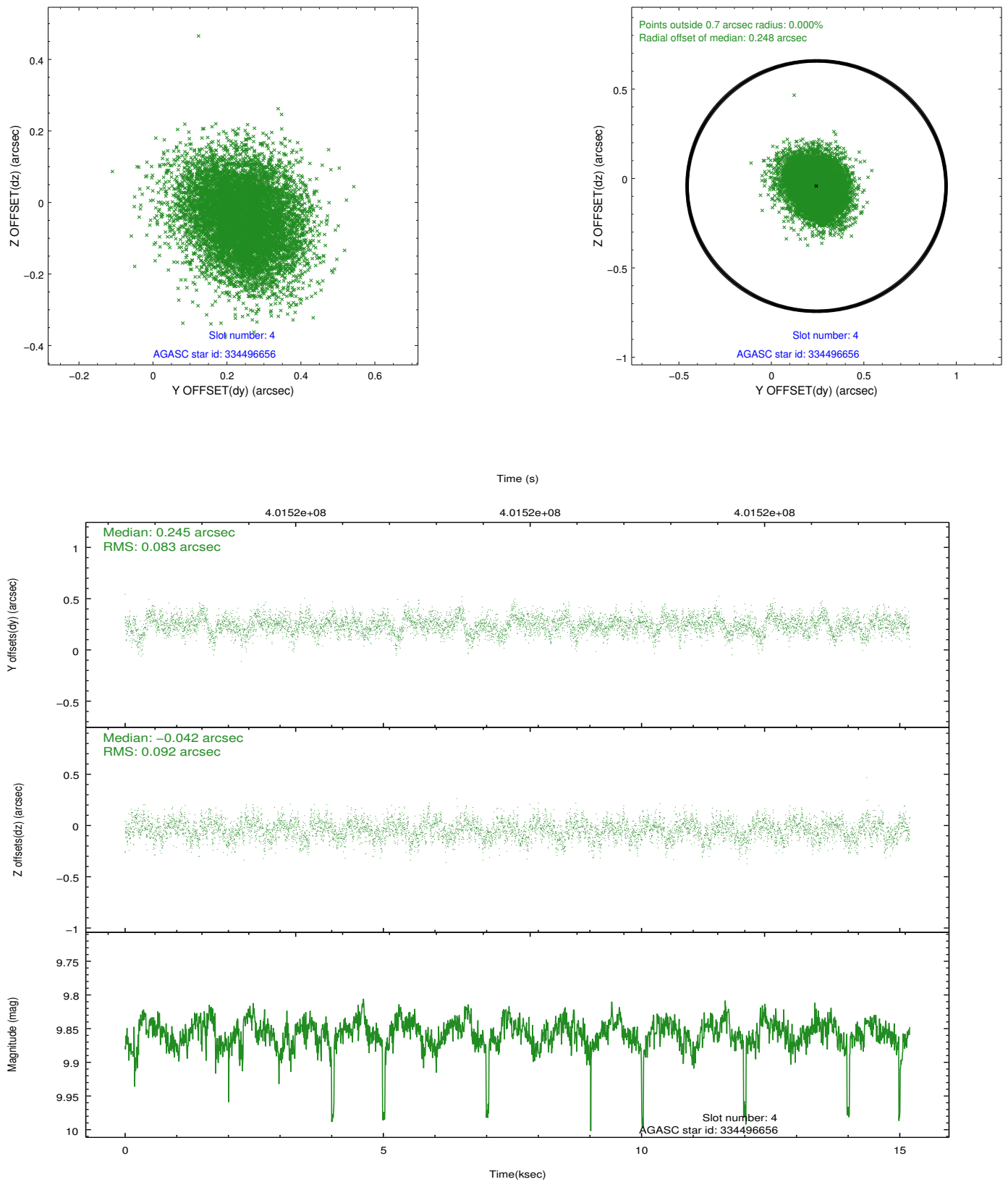
slot	status	id	mag	n_pts	med_dy	med_dz	dr1	dr2	ra	dec	mean_y	mean_z
0	FID	ACIS-S-2	6.90	3707	-0.071	-0.043	0.012	0.022	0.000000	0.000000	-769.41	-1739.08
1	FID	ACIS-S-4	6.98	3706	0.164	0.045	0.010	0.028	0.000000	0.000000	2144.01	169.13
2	FID	ACIS-S-5	7.01	3706	-0.126	0.006	0.011	0.021	0.000000	0.000000	-1821.89	163.18
3	GUIDE	334103896	9.26	7405	0.207	0.228	0.116	0.195	215.149512	34.721726	-1105.96	-2337.52
4	GUIDE	334496656	9.86	7382	0.245	-0.042	0.133	0.214	215.929218	35.031287	-607.83	171.19
5	GUIDE	334497312	9.84	7403	-0.026	0.023	0.160	0.269	215.482164	35.047592	-1447.16	-845.96
6	GUIDE	335021128	9.35	7404	-0.278	-0.391	0.113	0.186	216.159551	34.422539	1555.03	-594.95
7	GUIDE	335030384	8.82	7408	-0.158	0.190	0.092	0.143	216.806407	34.722197	1829.77	1588.67

2.4 Star Slots

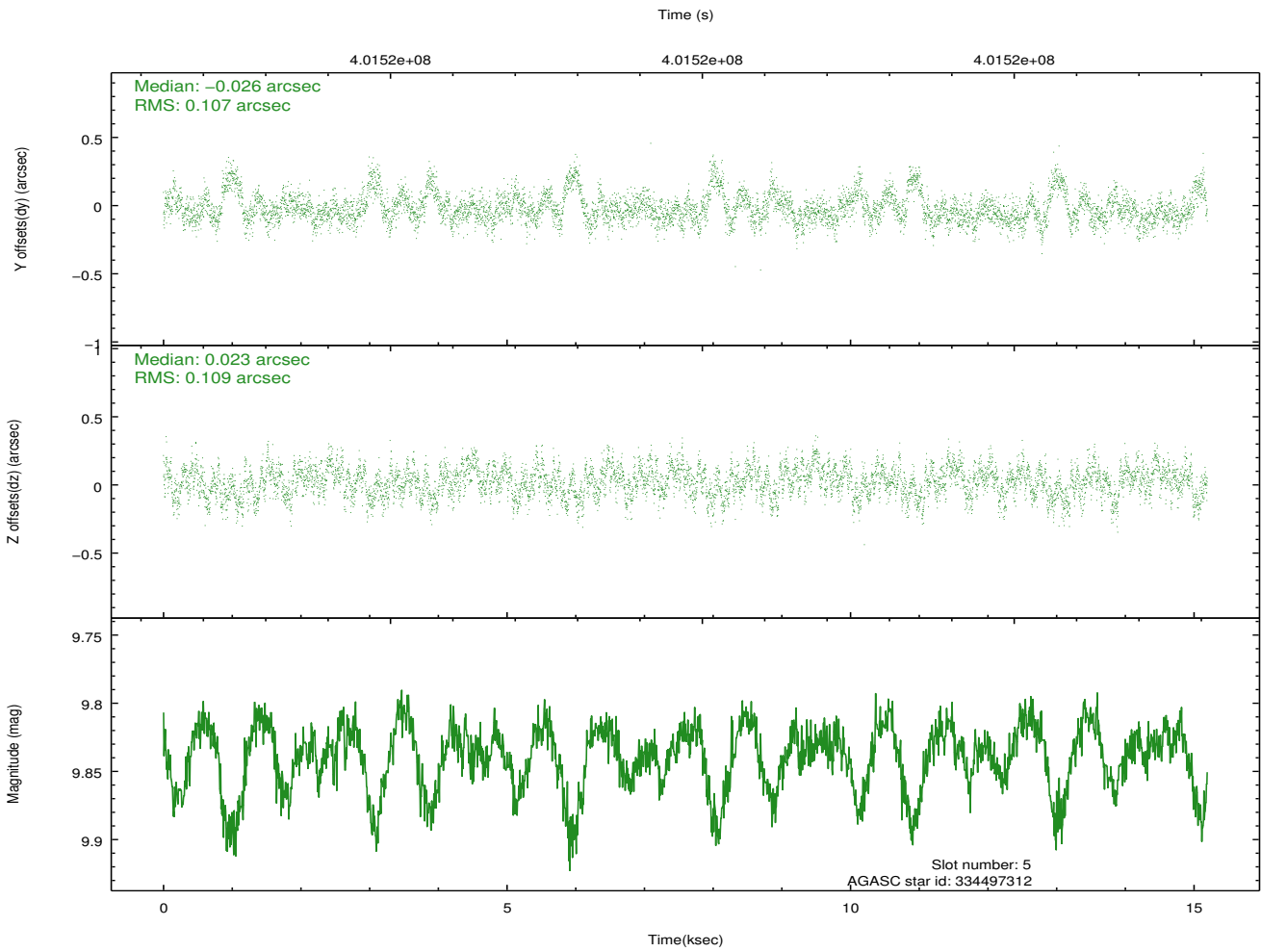
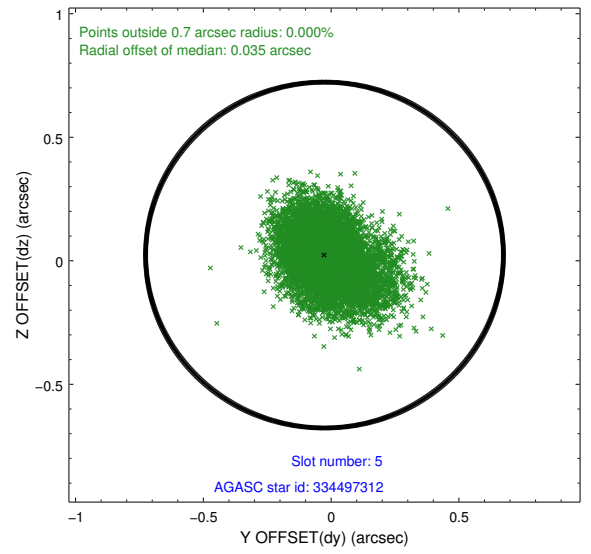
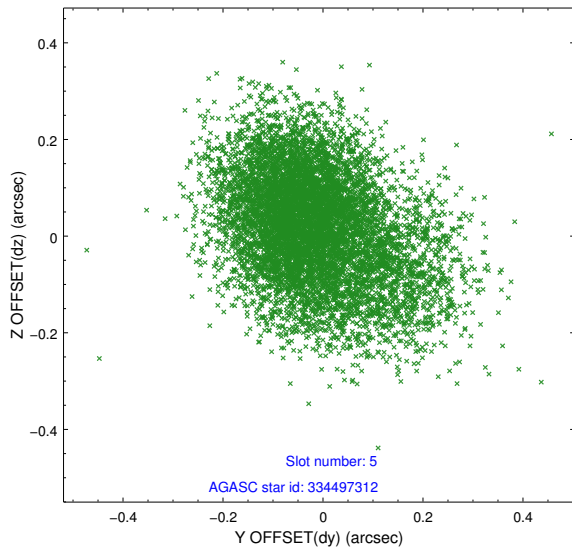
2.4.1 Slot 3



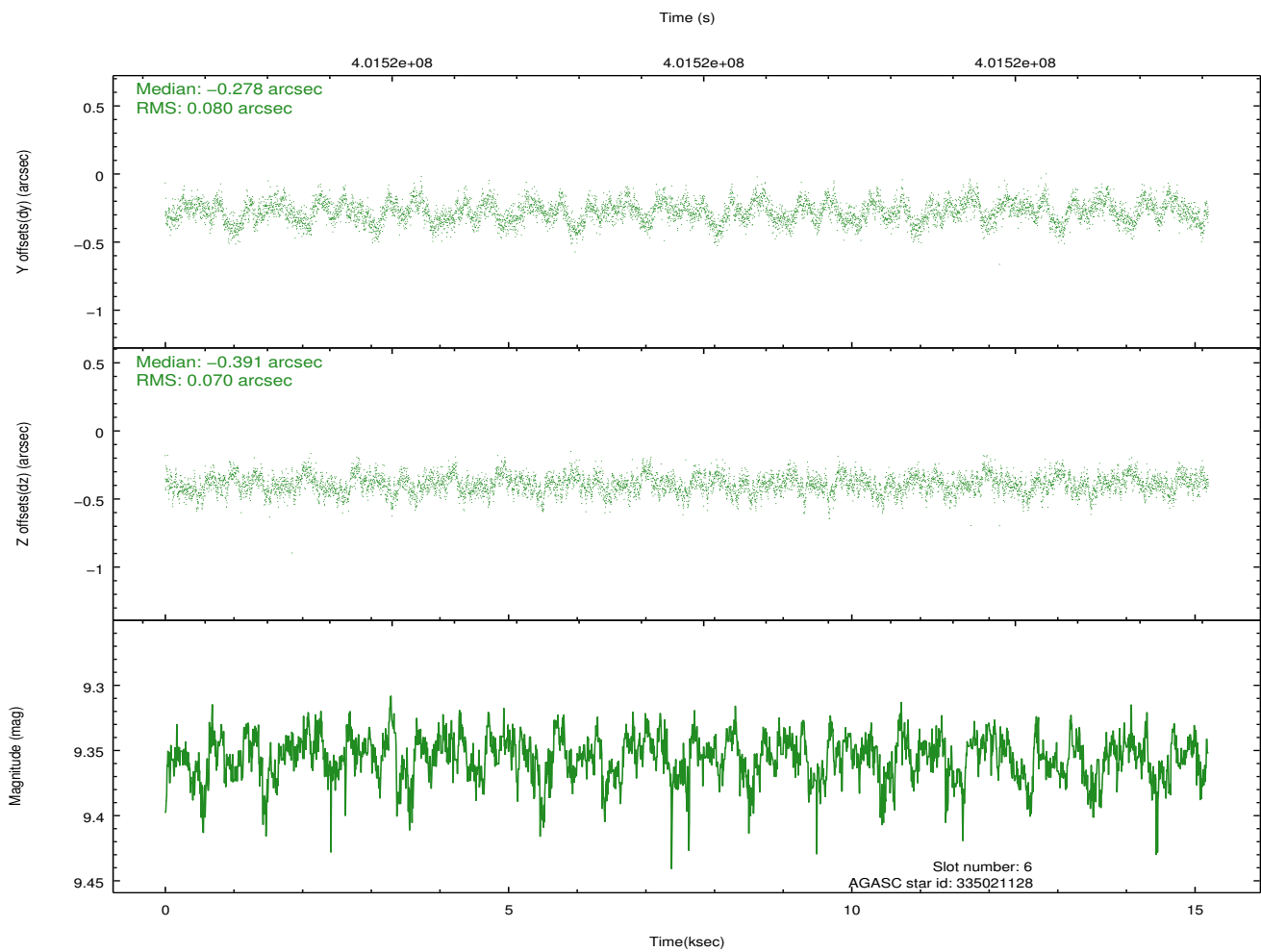
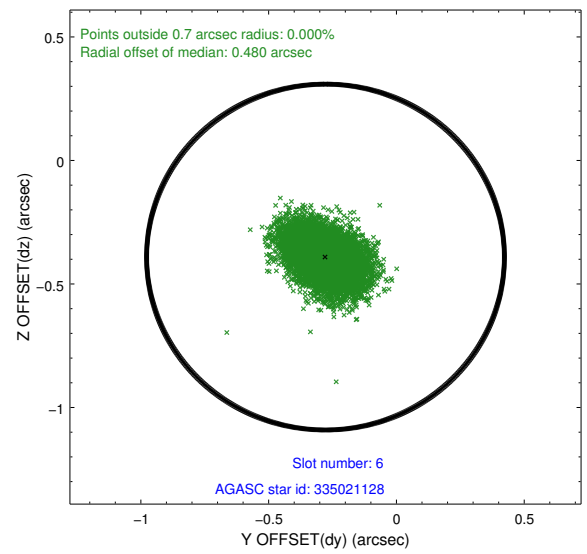
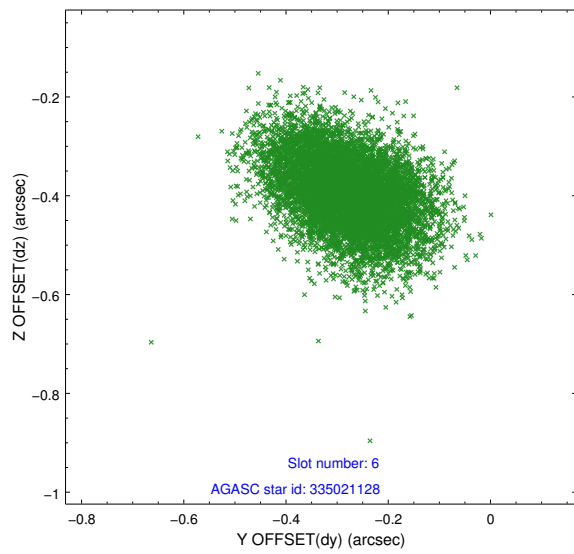
2.4.2 Slot 4



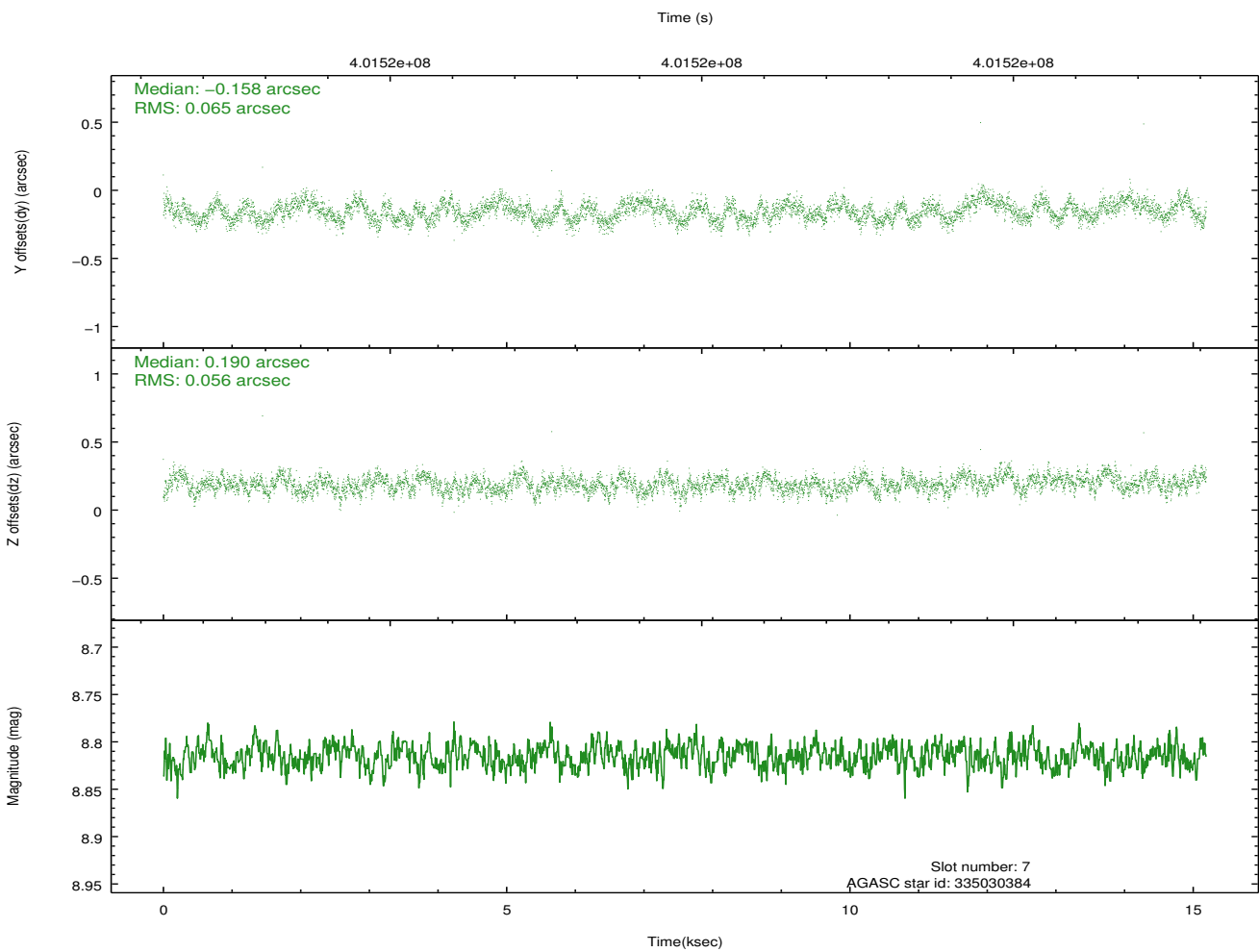
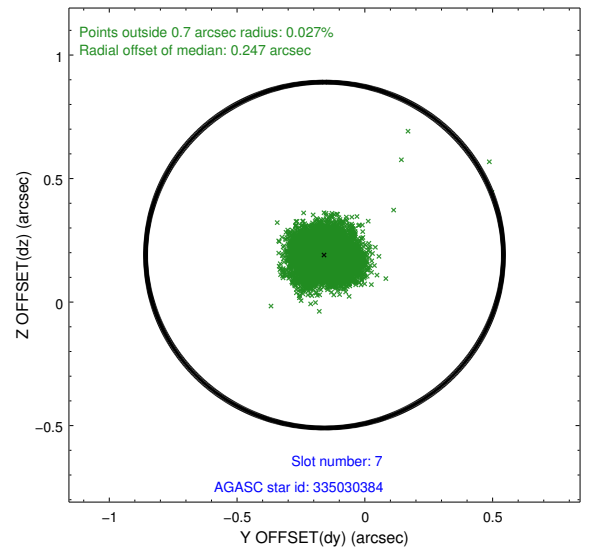
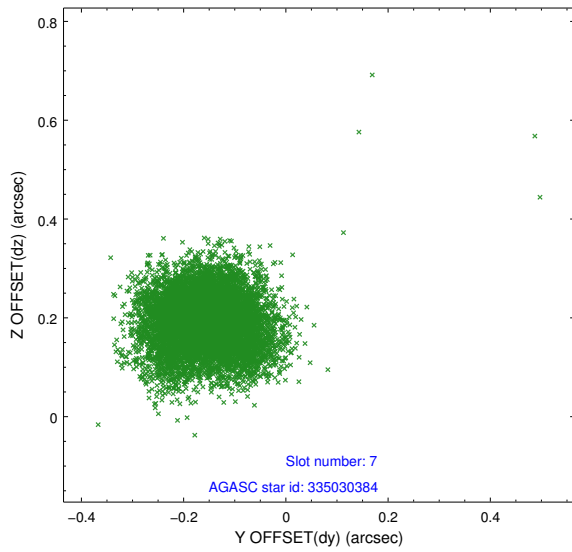
2.4.3 Slot 5



2.4.4 Slot 6

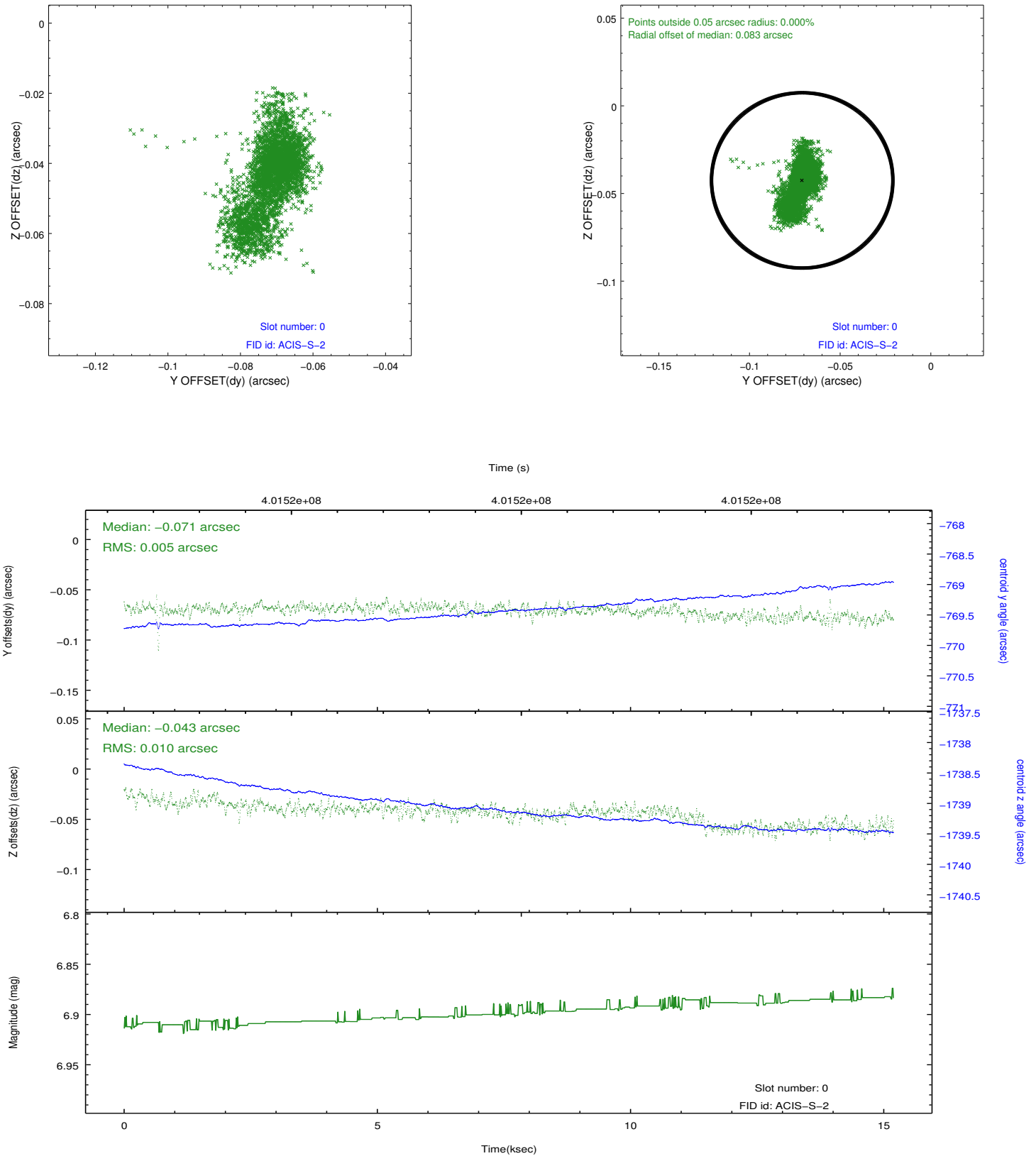


2.4.5 Slot 7

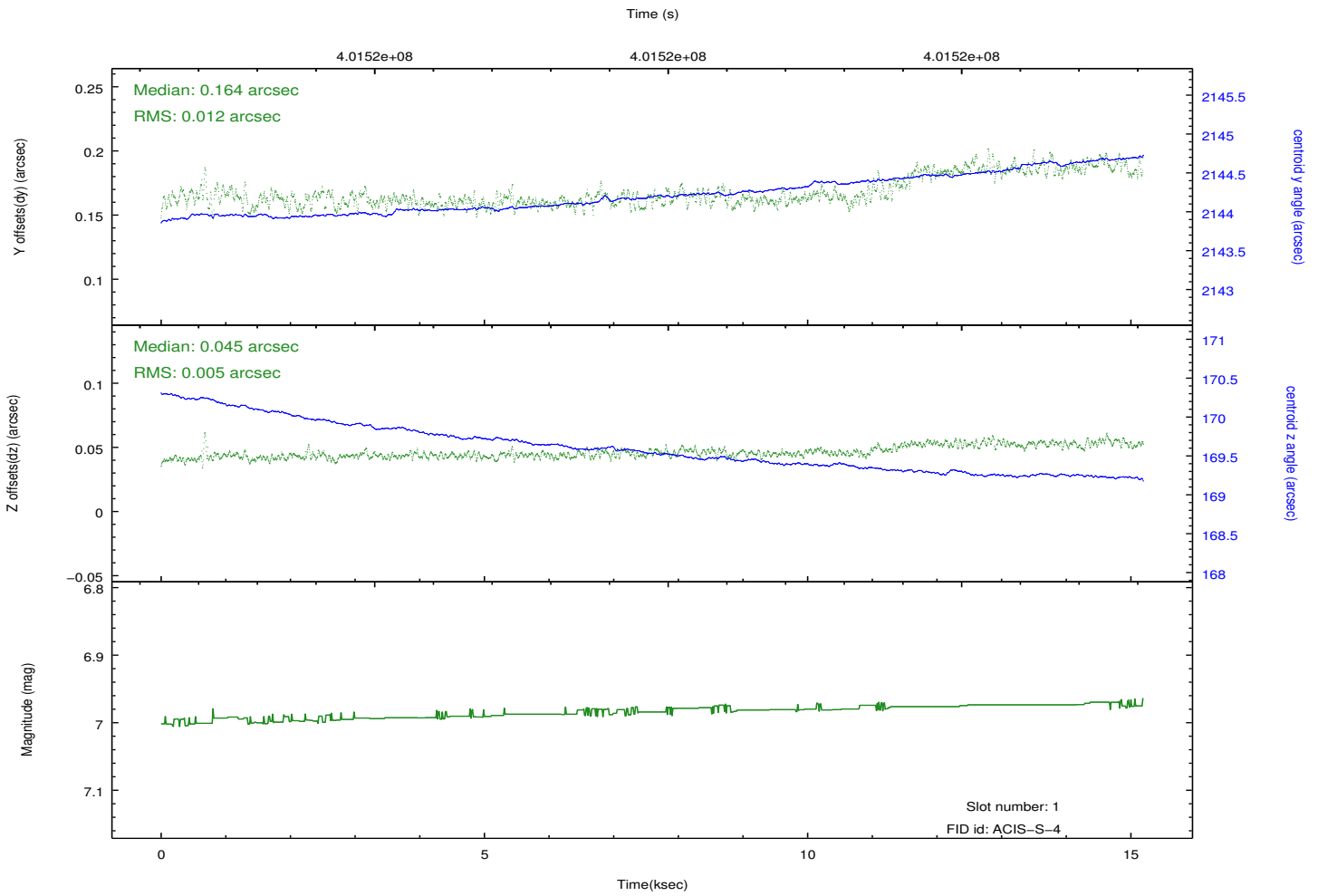
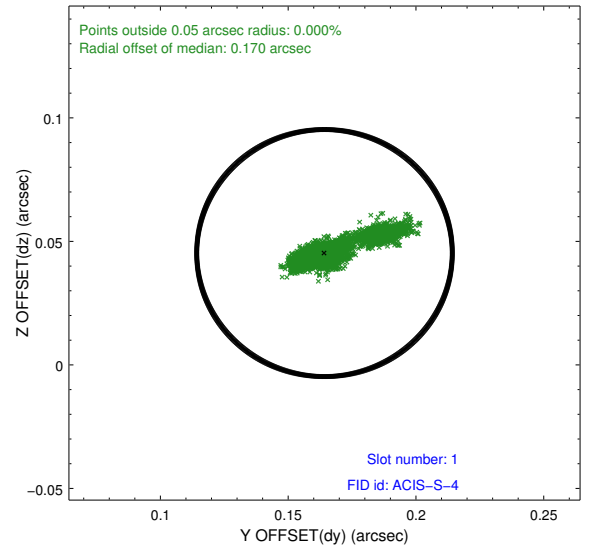
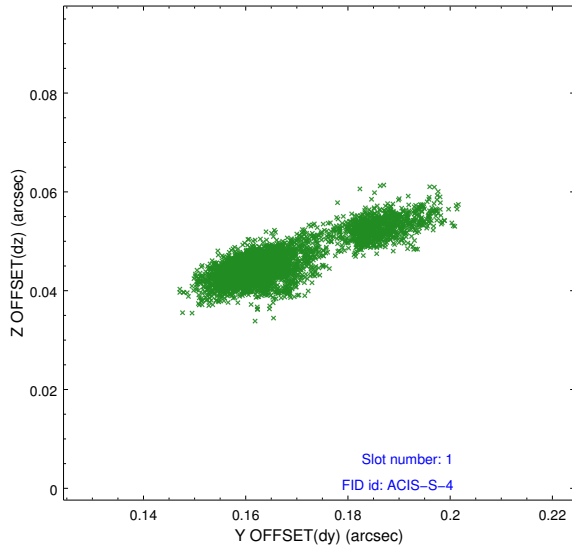


2.5 FID Slots

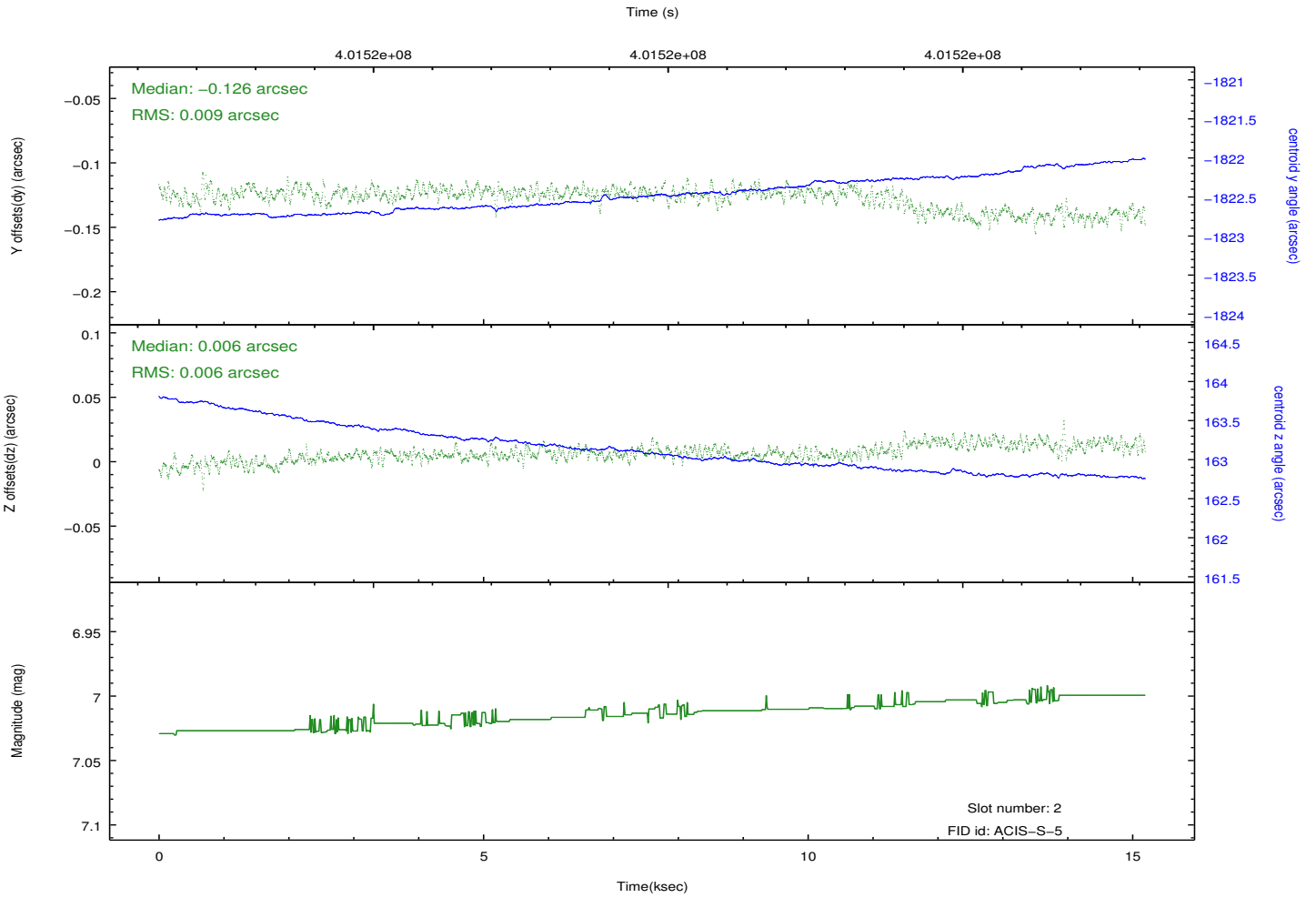
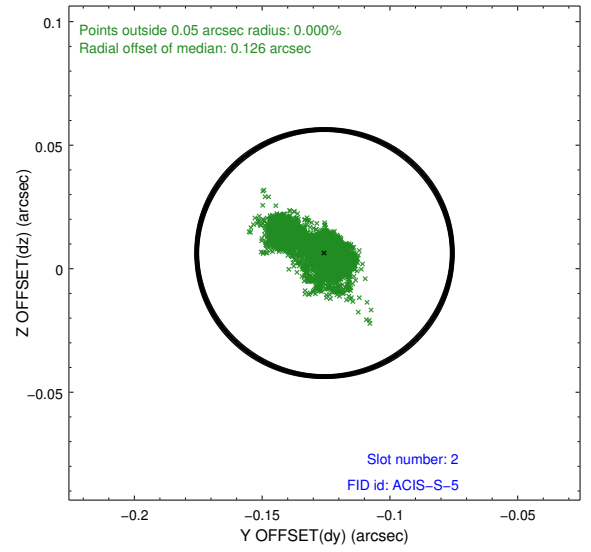
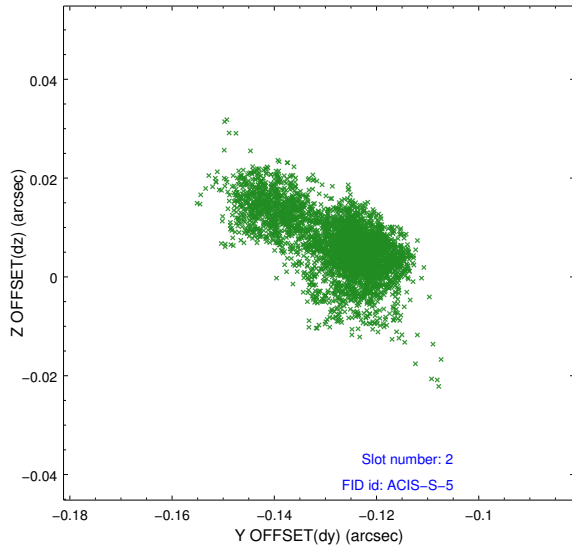
2.5.1 Slot 0



2.5.2 Slot 1



2.5.3 Slot 2



A Summary

A.1 Status

V&V Scientist	Jen Lauer
V&V Date (YYYY-MM-DD)	2012.07.12
V&V Edition	1
V&V Disposition and Status	OK
V&V Charge Time	14.754857888401

A.2 Comments