

V&V Reference Report

L2 ASCDS Version : 8.4.5

Observation 11749 - L2 Version 3
Chandra X-Ray Center

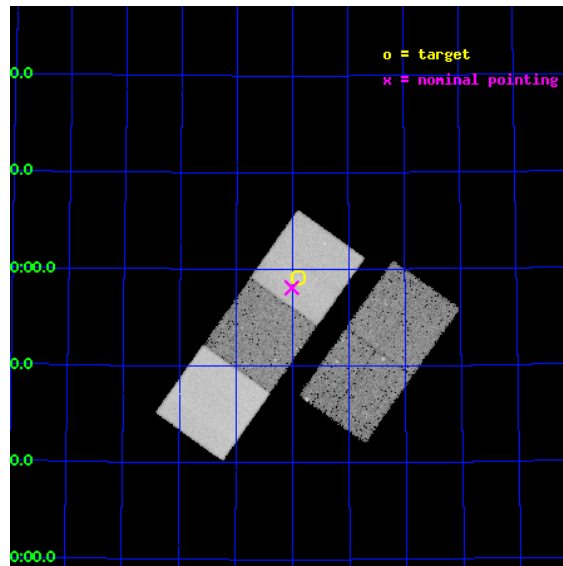
L2 Processing Date : Jul 20 2012

Contents

1	Front	2
2	OBI	3
2.1	OBI	3
2.1.1	Images	3
2.1.2	Bias	3
2.1.3	Parameters	4
2.1.4	Events	4
2.2	Compared Parameters	5
2.3	Aspect	6
2.4	Star Slots	9
2.4.1	Slot 3	9
2.4.2	Slot 4	10
2.4.3	Slot 5	11
2.4.4	Slot 6	12
2.4.5	Slot 7	13
2.5	FID Slots	14
2.5.1	Slot 0	14
2.5.2	Slot 1	15
2.5.3	Slot 2	16
A	Summary	17
A.1	Status	17
A.2	Comments	17

1 Front

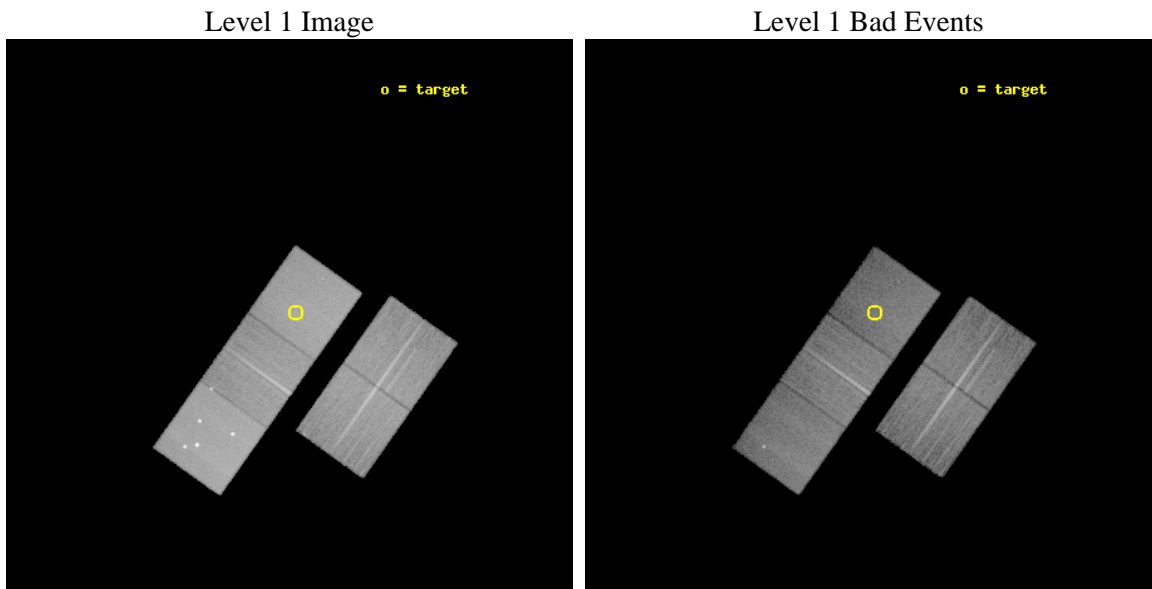
seq_num	800889	Sequence number
obs_id	11749	Observation id
title	Powerful Radio Sources in the Centers of Nearby Clusters	Proposal
observer	Dr Lukasz Stawarz	Principal investigator
object	Abell 0578	Source name
dtycycle	0	
cycle	P	events from which exps? Prim/Second/Both
ra_targ	111.225417	Observer's specified target RA [deg]
dec_targ	66.986222	Observer's specified target Dec [deg]
ra_nom	111.25267306801	Nominal RA [deg]
dec_nom	66.968314137078	Nominal Dec [deg]
roll_nom	305.37252923566	Nominal Roll [deg]
revision	3	Processing version of data
ontime	24781.400190592	Sum of GTIs [s]
liveltime	24457.6129533	Livetime [s]
ontime2	24781.400190592	Sum of GTIs [s]
ontime3	24781.400190592	Sum of GTIs [s]
ontime5	24781.400190592	Sum of GTIs [s]
ontime6	24778.259230316	Sum of GTIs [s]
ontime7	24781.400190592	Sum of GTIs [s]
l2events	280663	Number of level 2 events



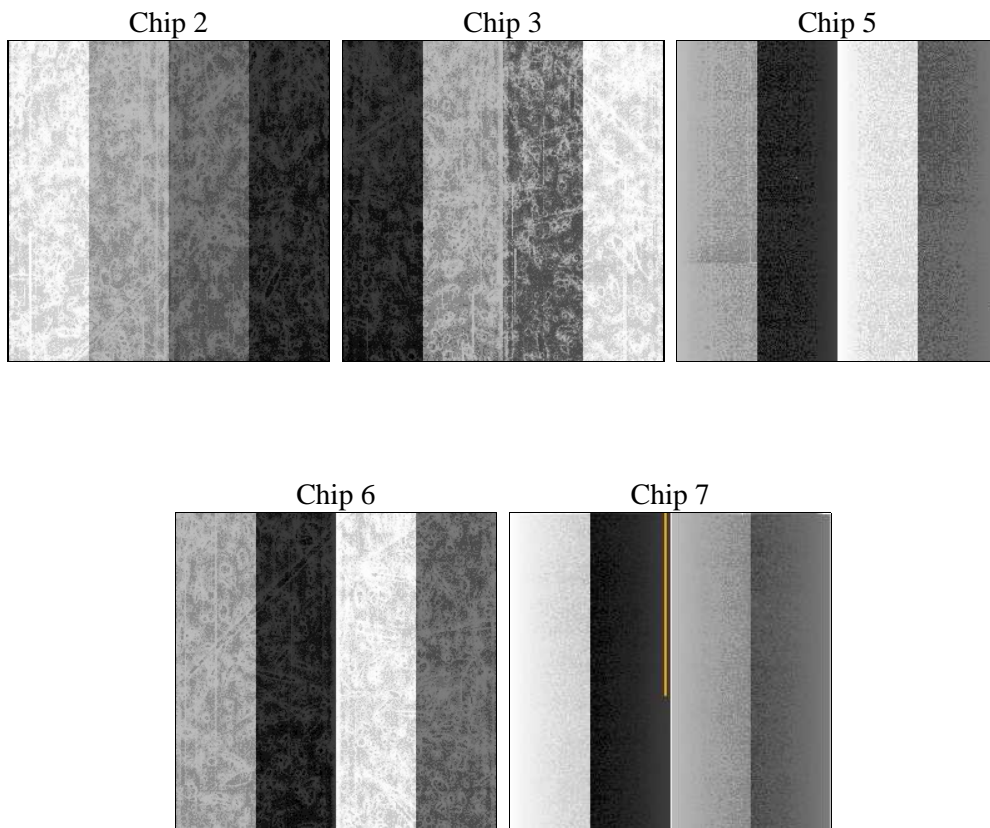
2 OBI

2.1 OBI

2.1.1 Images



2.1.2 Bias



2.1.3 Parameters

obi_num	0	Obi number	sched_exp_time	40000.070000	[s] Scheduled observation exposure time
ascdsver	8.4.5	Processing system revision	ontime	24781.400190592	Sum of GTIs [s]
caldbver	4.5.0	 	ontime2	24781.400190592	Sum of GTIs [s]
date	2012-07-20T17:41:01	Date and time of file creation	ontime3	24781.400190592	Sum of GTIs [s]
revision	3	Processing version of data	ontime5	24781.400190592	Sum of GTIs [s]
			ontime6	24778.259230316	Sum of GTIs [s]
			ontime7	24781.400190592	Sum of GTIs [s]
			l1events	1069177	Number of level 1 events

2.1.4 Events

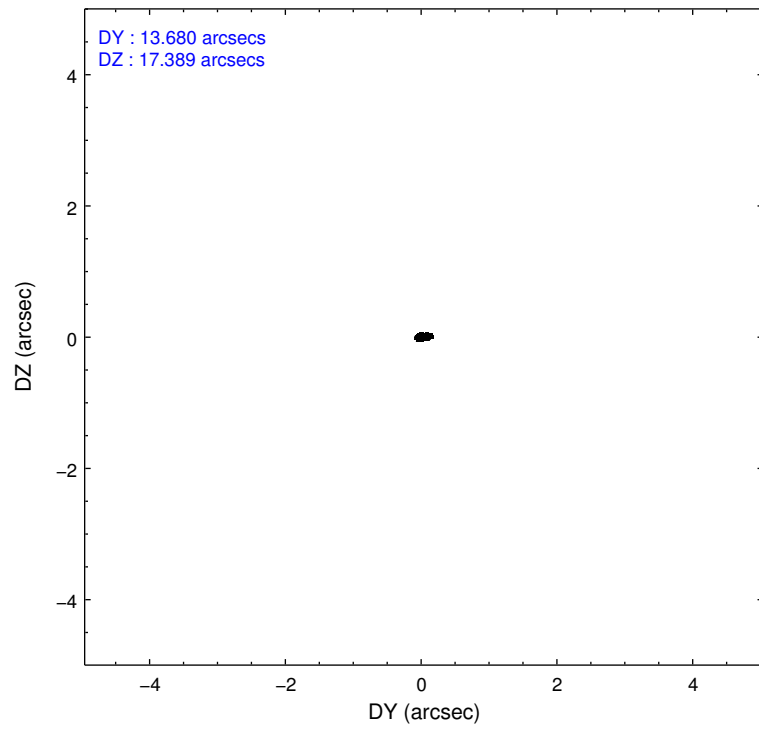
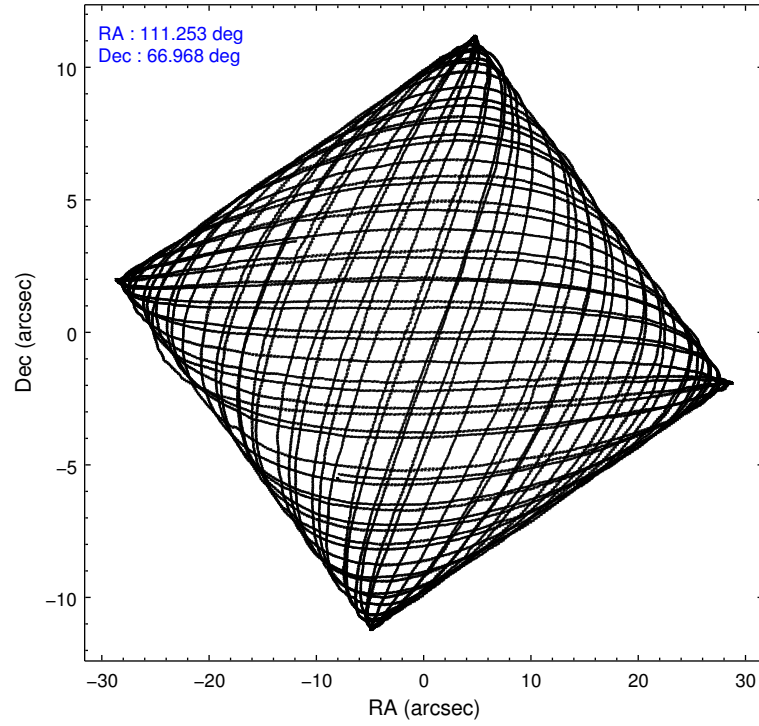
	ccd 2	ccd 3	ccd 5	ccd 6	ccd 7
level 1 events	185016	175862	291160	188826	228313
rejected events	165265	157231	141054	167704	123922
rejected %	89%	89%	48%	88%	54%

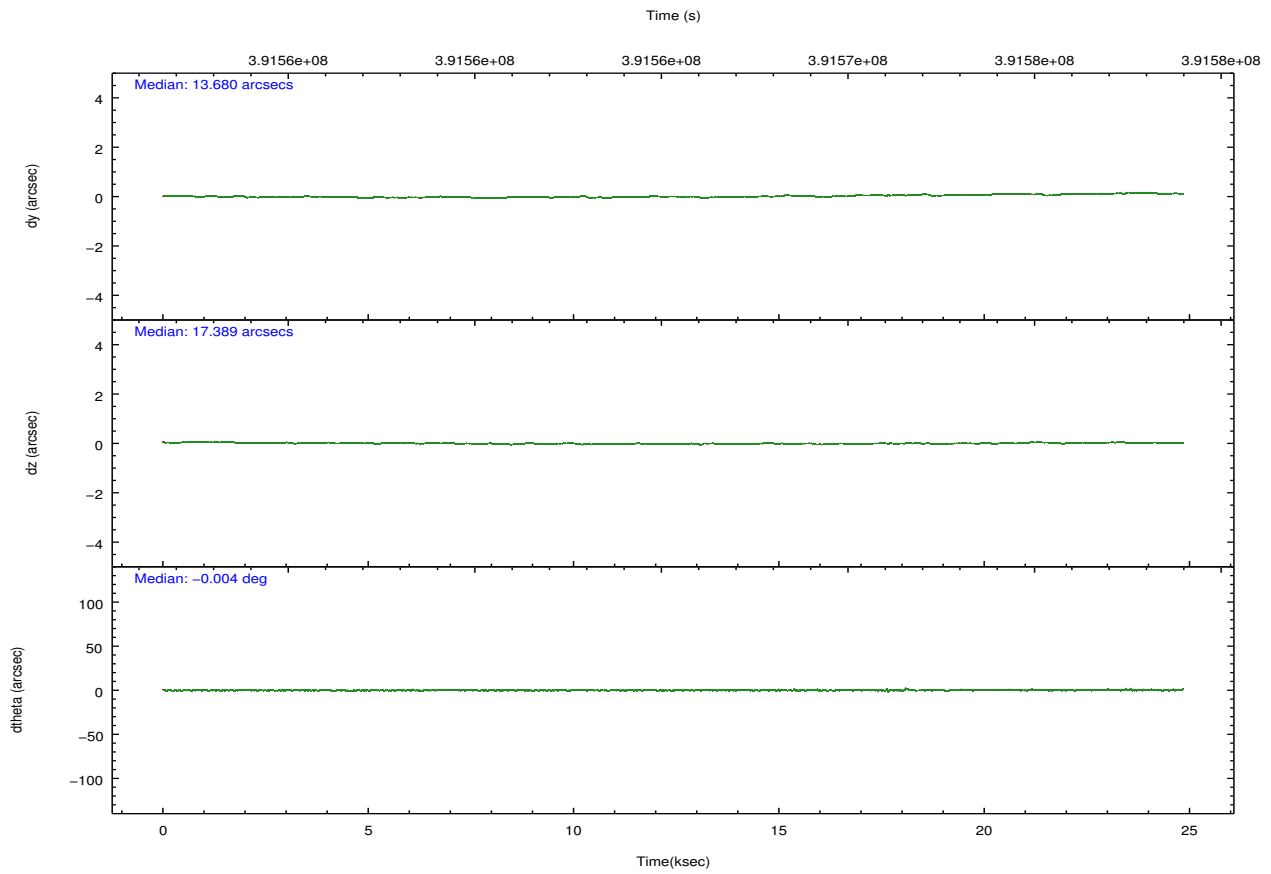
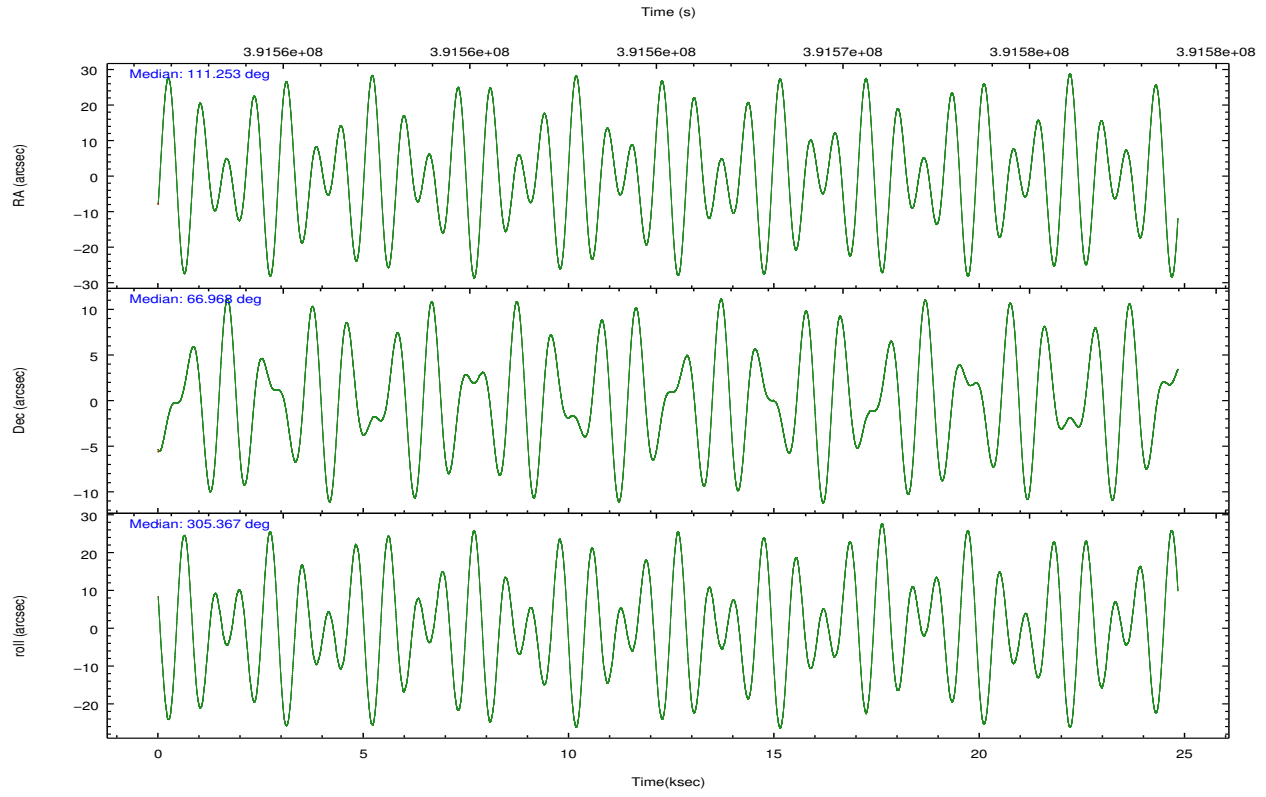
	ccd 2	ccd 3	ccd 5	ccd 6	ccd 7
grade 0 events	7279	6575	25392	7641	10535
	3%	3%	8%	4%	4%
grade 1 events	100	104	529	119	323
	0%	0%	0%	0%	0%
grade 2 events	4645	4087	42368	4767	21595
	2%	2%	14%	2%	9%
grade 3 events	2099	2133	5412	2163	9272
	1%	1%	1%	1%	4%
grade 4 events	2127	2057	5154	2162	9057
	1%	1%	1%	1%	3%
grade 5 events	6642	8419	21027	8441	22853
	3%	4%	7%	4%	10%
grade 6 events	3649	3820	72135	4437	54156
	1%	2%	24%	2%	23%
grade 7 events	158475	148667	119143	159096	100522
	85%	84%	40%	84%	44%

2.2 Compared Parameters

Parameter	Planned	Actual	Parameter	Planned	Actual
Instrument	ACIS	ACIS	Obspar format version number	7	7
Detector	ACIS-23567	ACIS-23567	Obspar file type	PREDICTED	ACTUAL
Grating	NONE	NONE	Obspar update status	OVERRIDE	OVERRIDE
Data mode	VFAINT	VFAINT	Number of optional ACIS chips dropped	0	0
Observation mode	POINTING	POINTING	On-chip summing requested	N	N
[deg] Pointing RA	111.188777	111.2526730680138	Subarray requested	NONE	NONE
[deg] Pointing Dec	66.979351	66.96831413707808	Alternating exposures requested	N	N
[deg] Pointing Roll	305.274716	305.3725292356573	[s] Primary exposure time	3.1	3.1
[mm] SIM focus pos	-0.6828225247311905	-0.6828225247311905			
[mm] SIM defocus	0.001444942264670179	0.001444942264670179			
[mm] SIM translation stage pos	-190.1425803651734	-190.1425803651734			
[mm] SIM translation stage offset	0.01005726120618533	0.01005726120618533			
[s] Observation start time (MET)	391552902.184000	391552902.184			
Observation start date	2010-05-29T20:40:36	2010-05-29T20:41:42			
[s] Observation end time (MET)	391577737.230000	391577737.23			
Observation end date	2010-05-30T03:35:37	2010-05-30T03:35:37			
Read mode	TIMED	TIMED			

2.3 Aspect



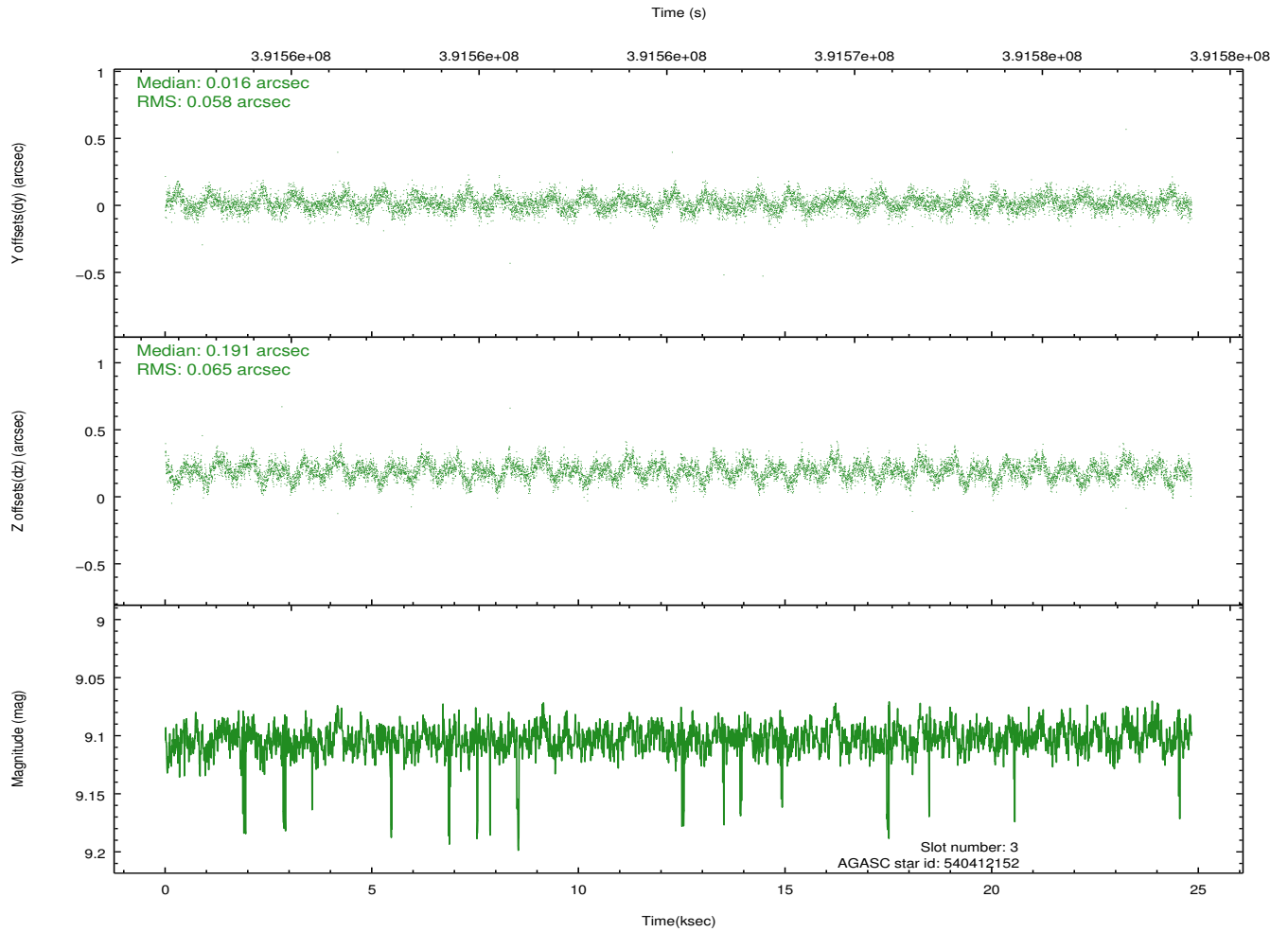
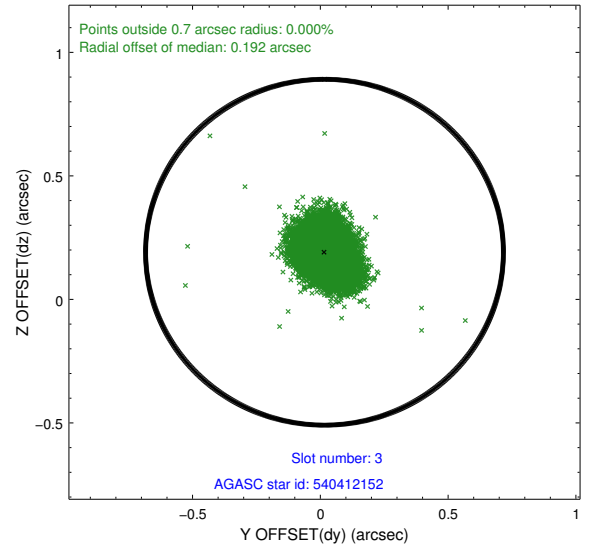
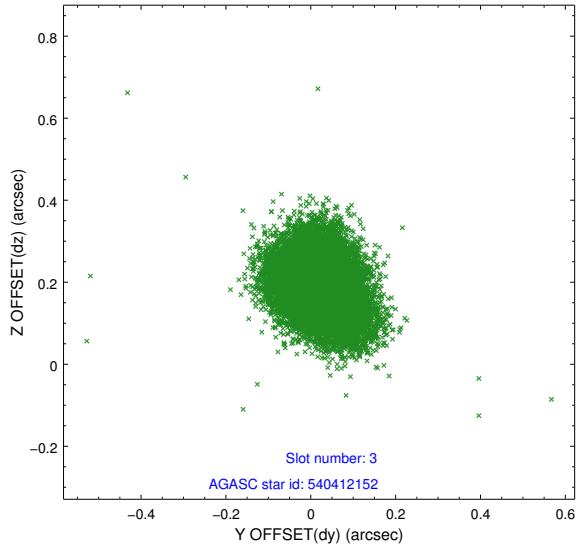


Slot Statistics

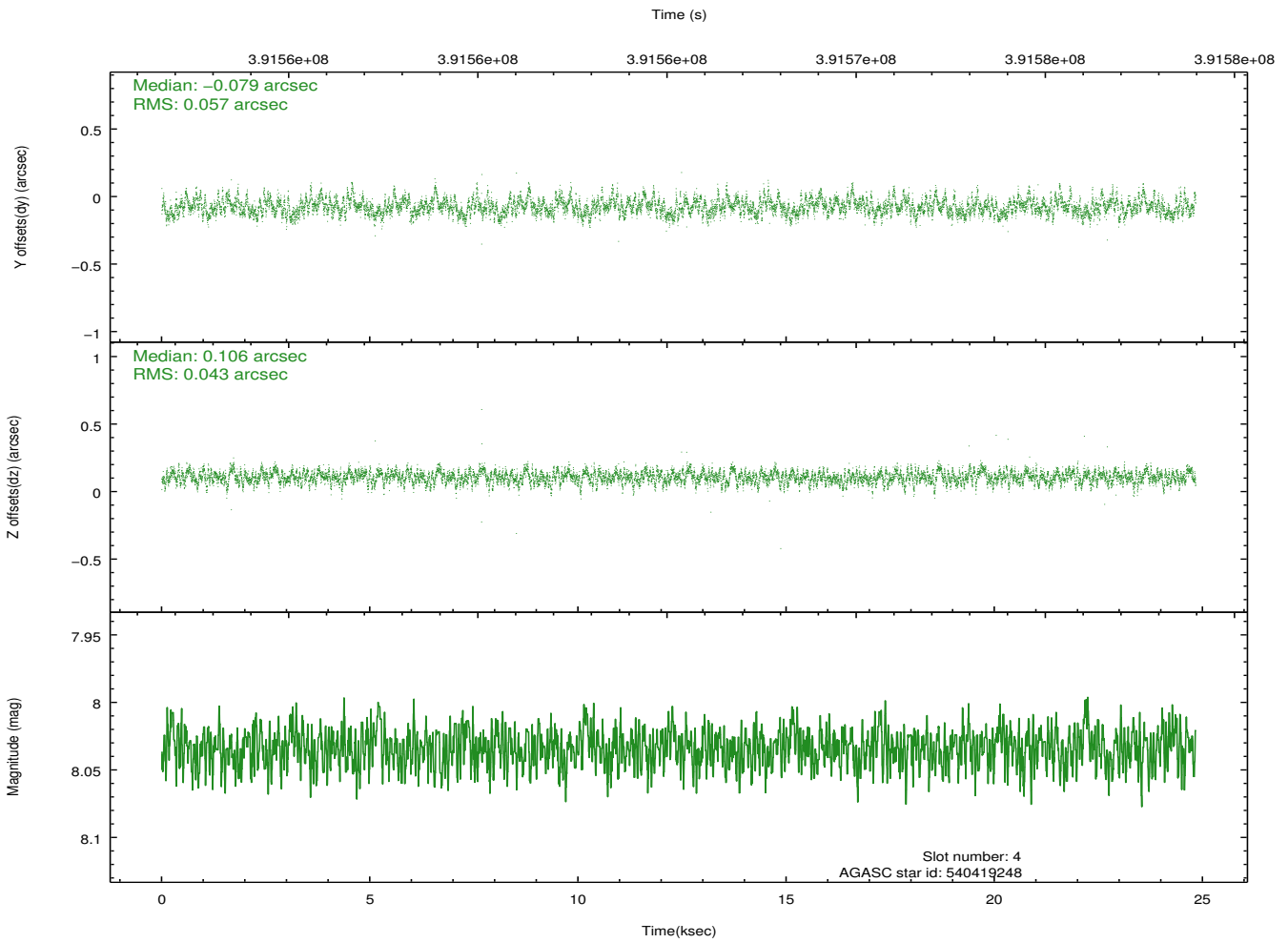
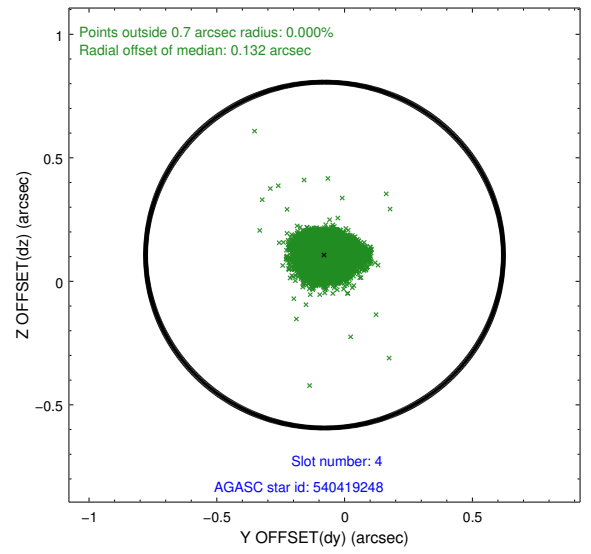
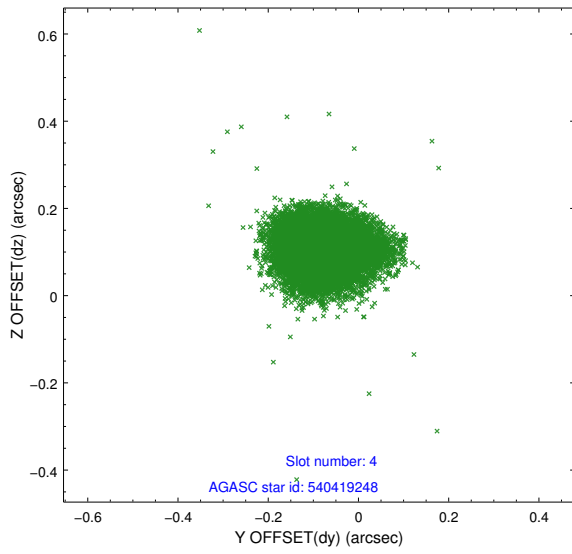
slot	status	id	mag	n_pts	med_dy	med_dz	dr1	dr2	ra	dec	mean_y	mean_z
0	FID	ACIS-S-1	6.96	6057	0.110	-0.063	0.006	0.011	0.000000	0.000000	929.48	-1734.49
1	FID	ACIS-S-5	6.99	6057	-0.161	0.077	0.006	0.012	0.000000	0.000000	-1819.68	163.13
2	FID	ACIS-S-6	7.09	6055	0.030	-0.002	0.007	0.011	0.000000	0.000000	394.88	807.11
3	GUIDE	540412152	9.10	12077	0.016	0.191	0.092	0.150	111.403131	66.566111	1391.69	-607.92
4	GUIDE	540419248	8.03	12112	-0.079	0.106	0.075	0.121	111.293899	67.147179	-408.12	468.86
5	GUIDE	540541248	7.31	12113	-0.135	-0.059	0.058	0.090	112.105278	66.872131	1055.77	840.70
6	GUIDE	540541936	7.14	12114	-0.094	-0.060	0.061	0.094	113.243974	66.937826	1756.55	2307.01
7	GUIDE	571476656	8.19	12111	0.288	-0.175	0.065	0.108	111.989788	67.671491	-1406.86	2337.39

2.4 Star Slots

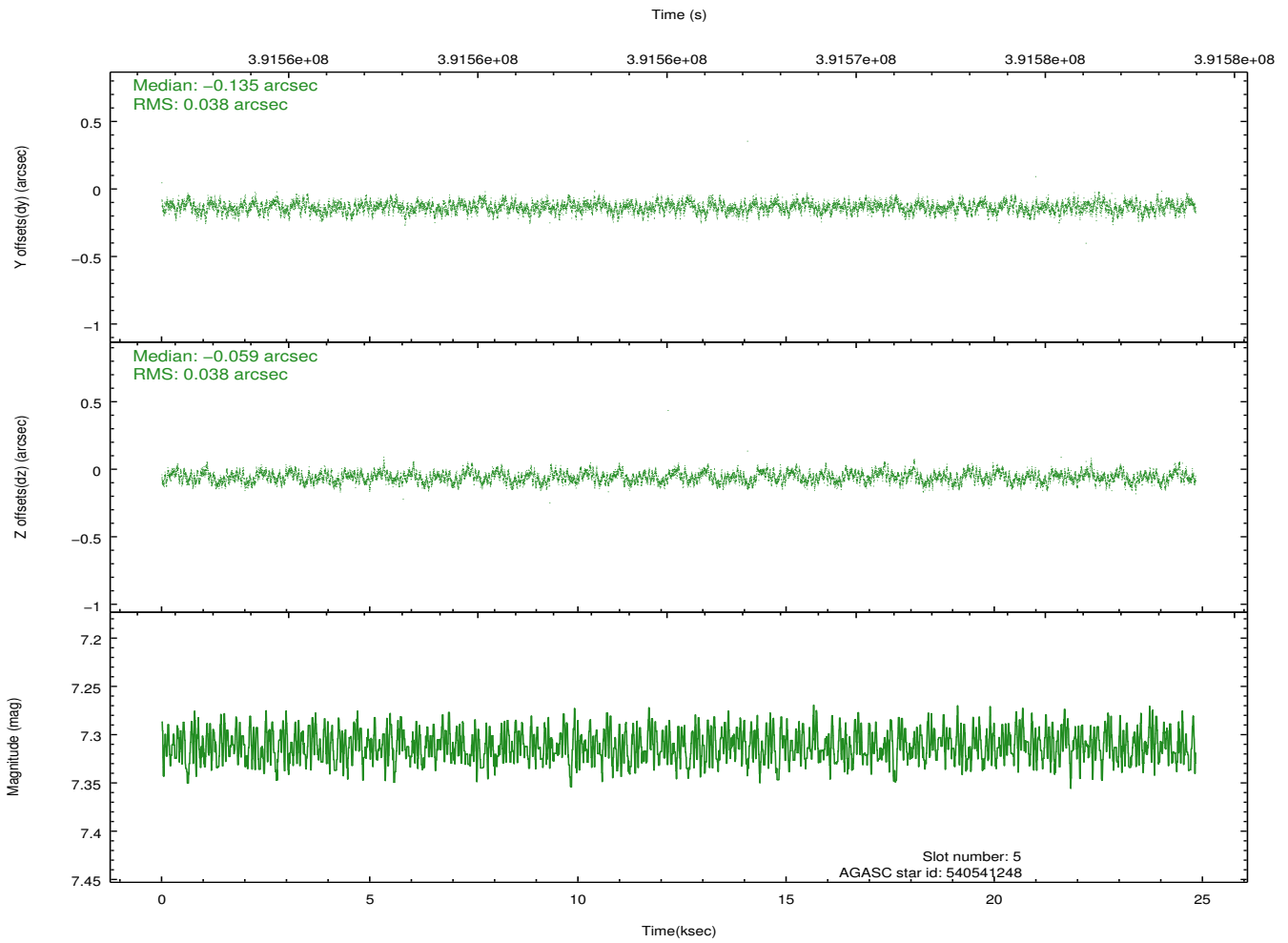
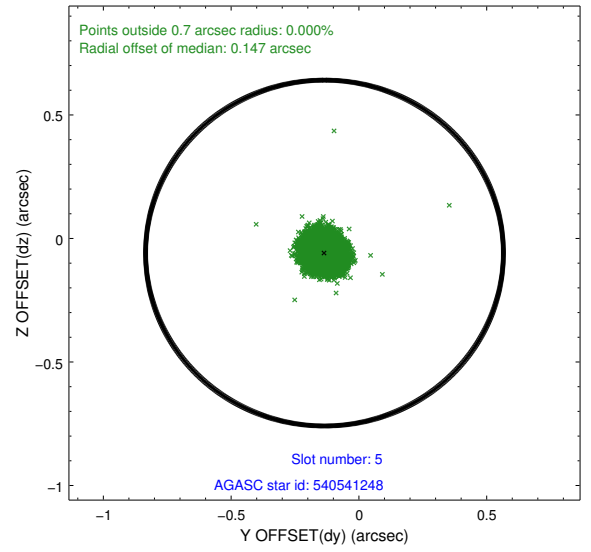
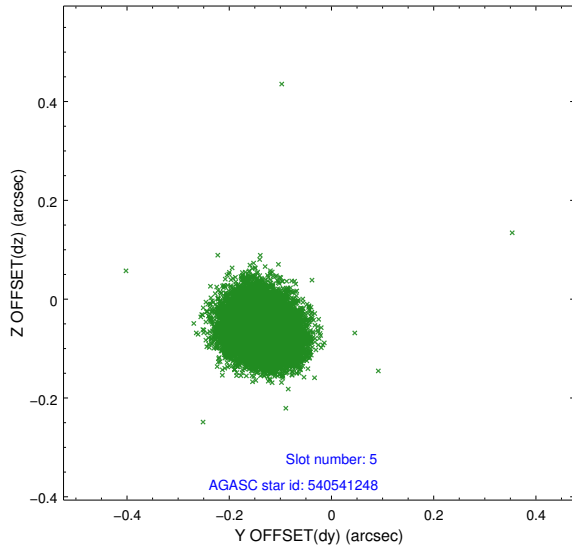
2.4.1 Slot 3



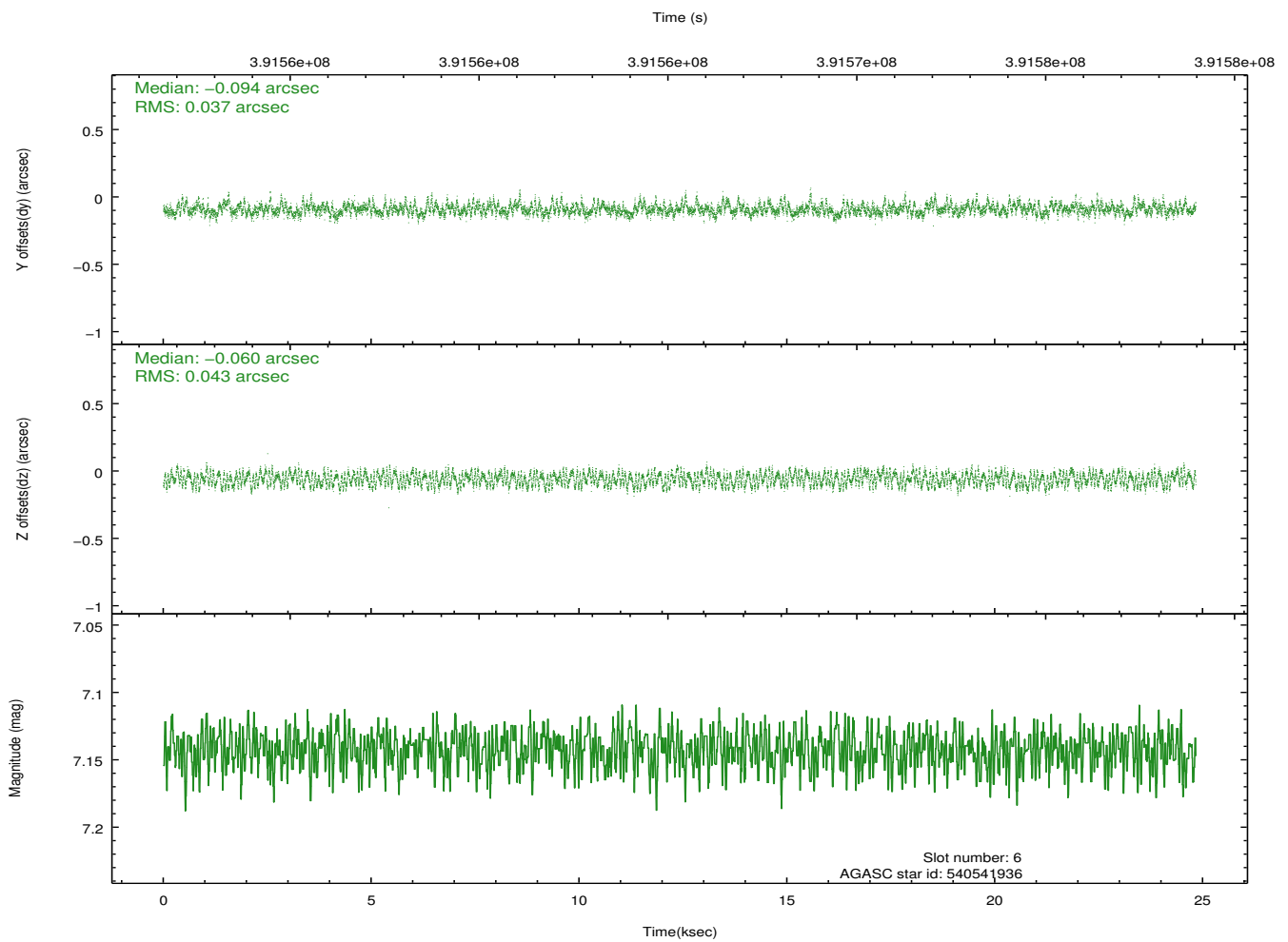
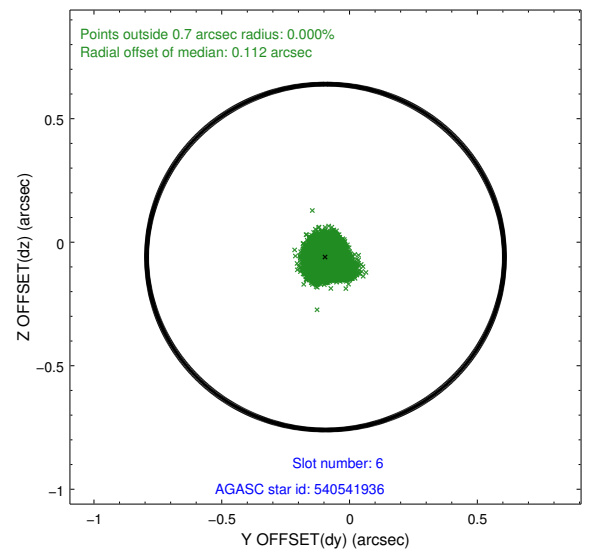
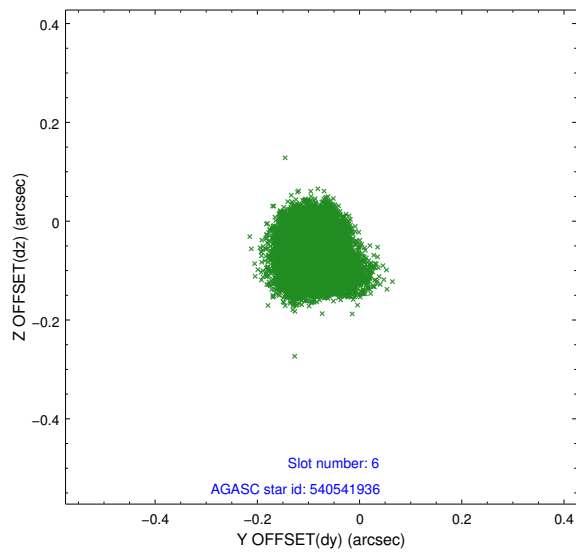
2.4.2 Slot 4



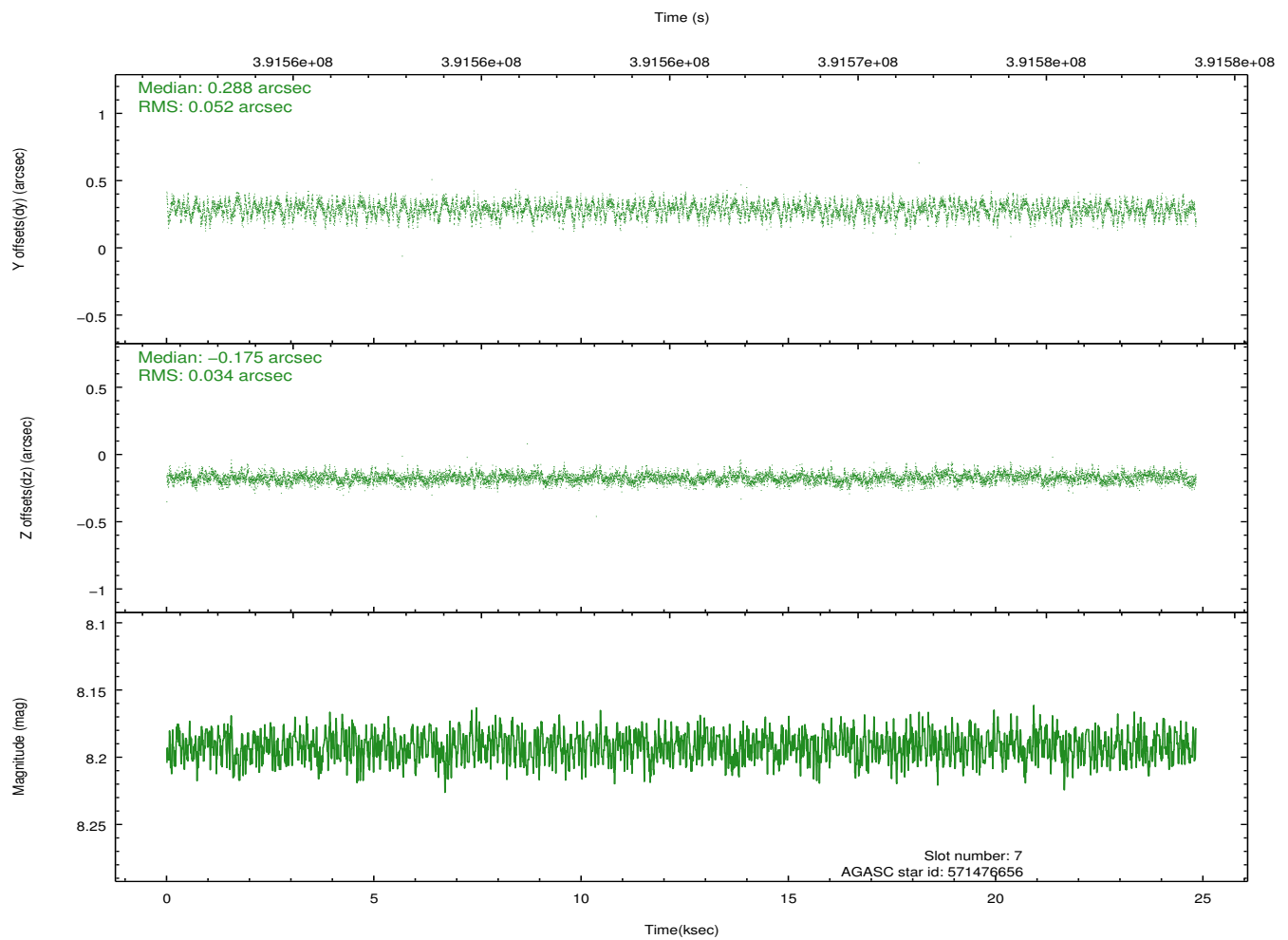
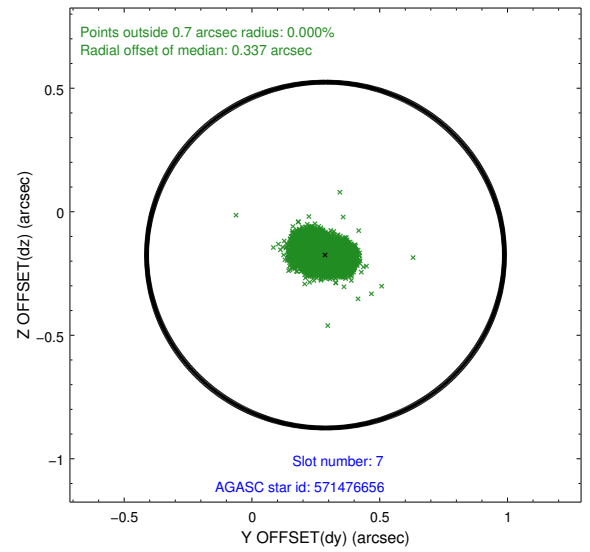
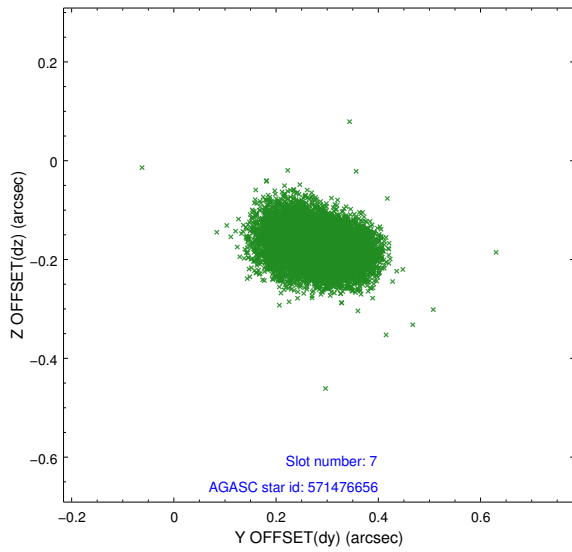
2.4.3 Slot 5



2.4.4 Slot 6

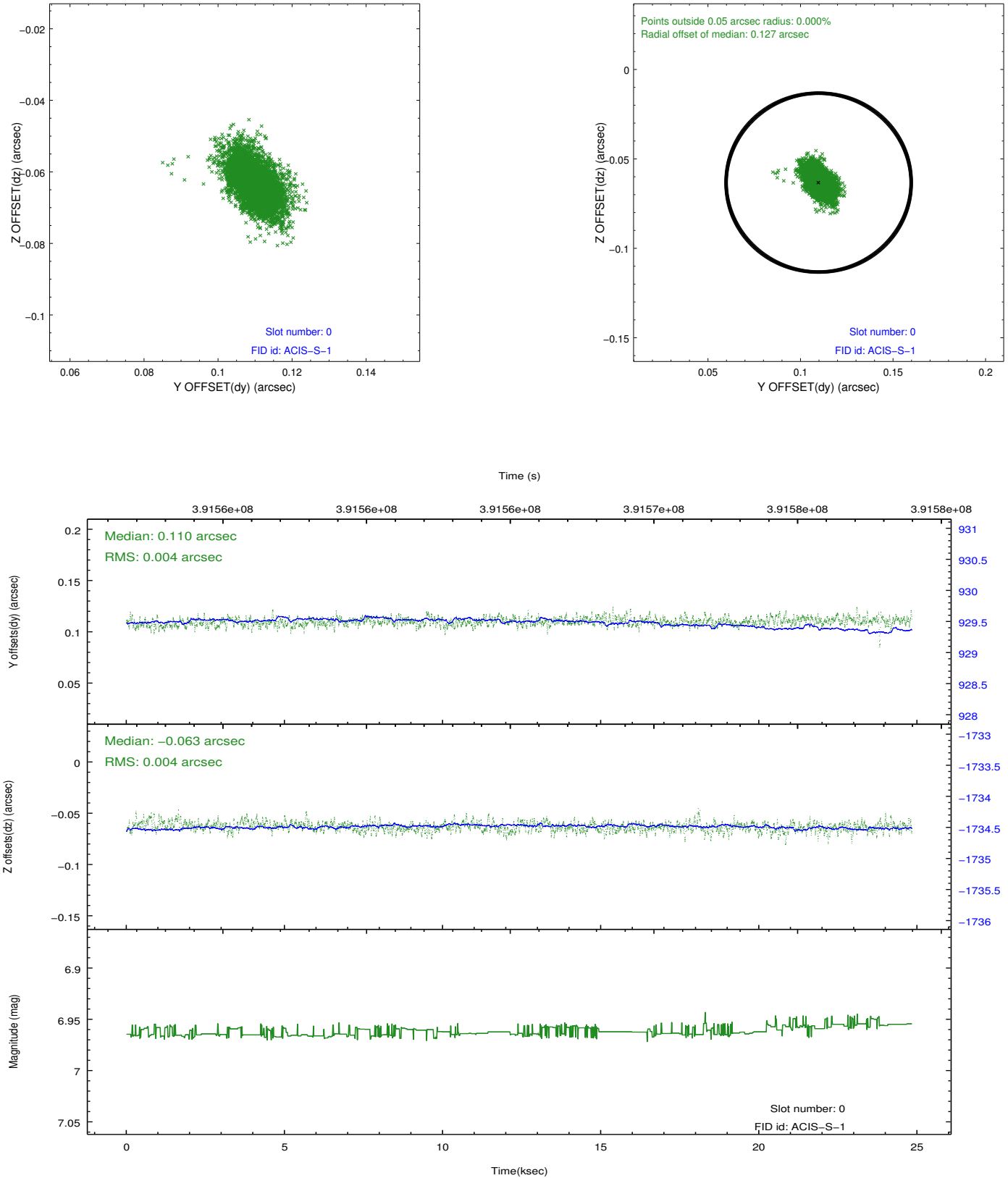


2.4.5 Slot 7

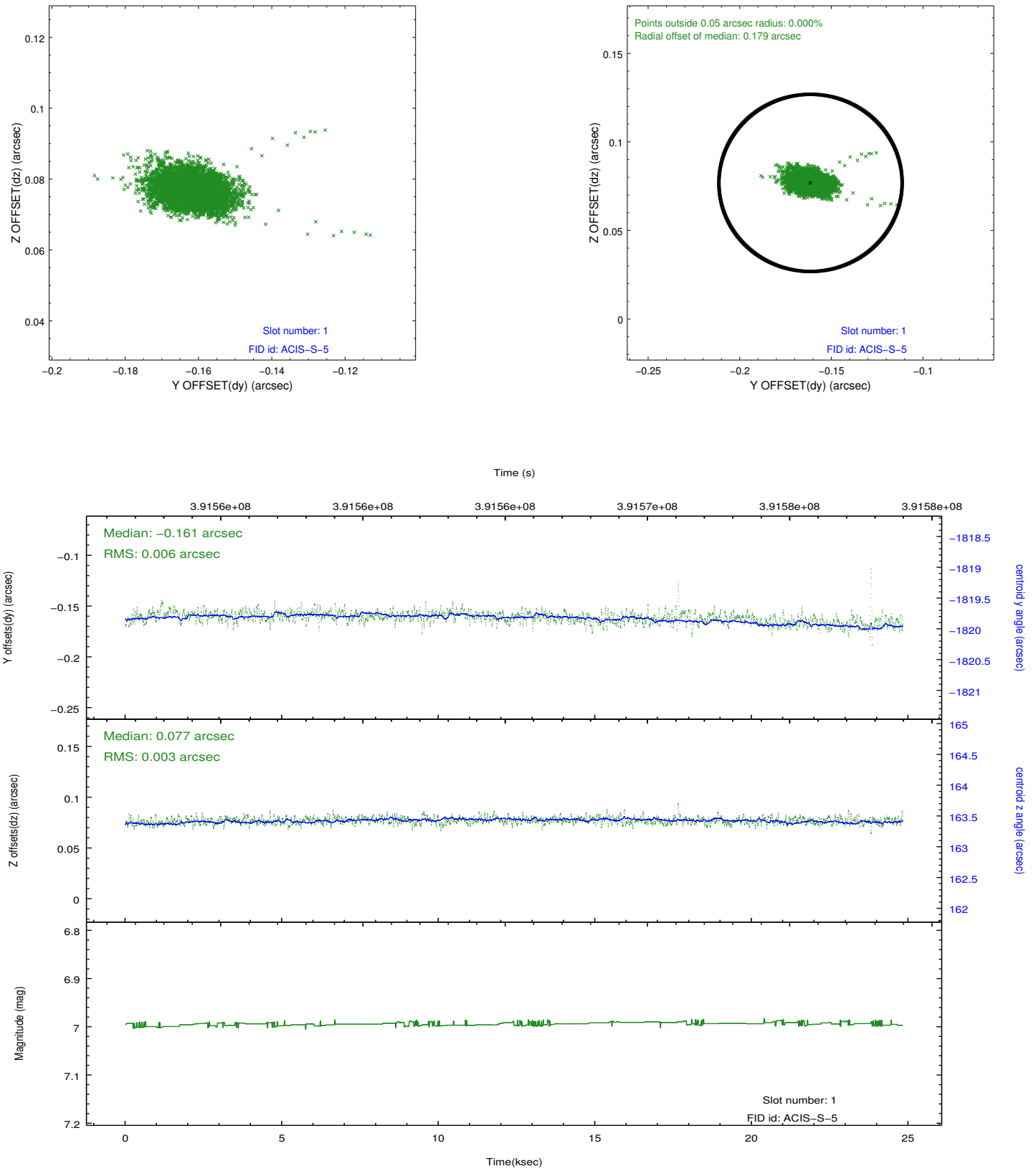


2.5 FID Slots

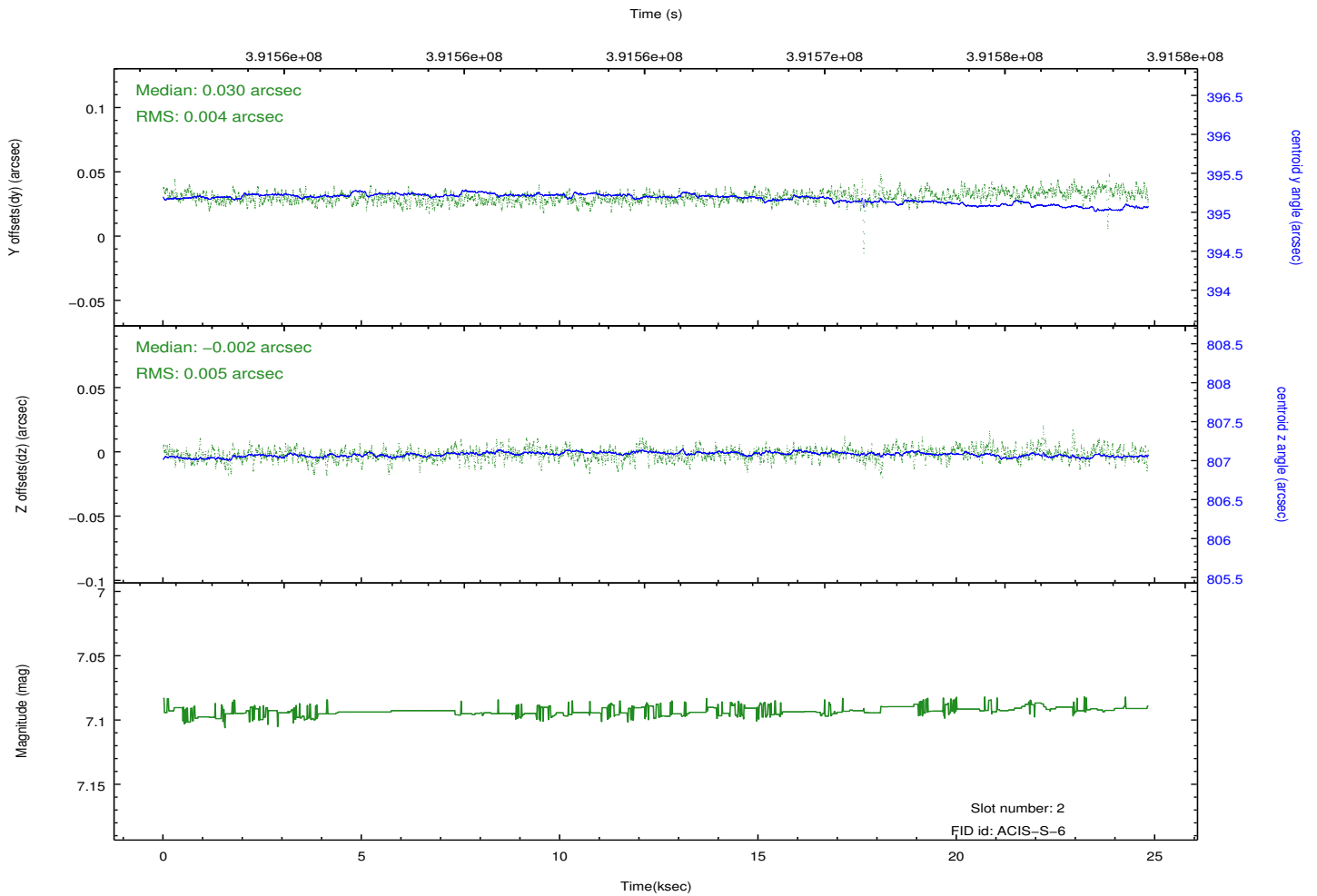
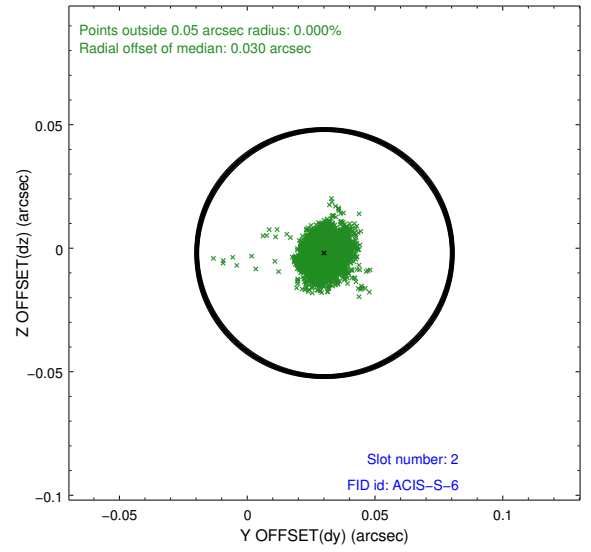
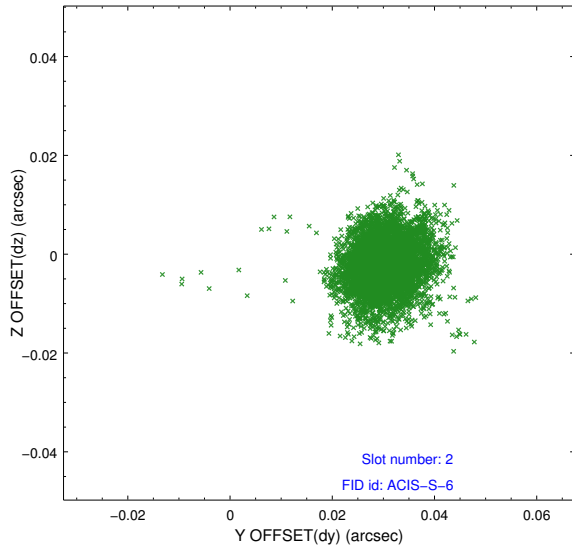
2.5.1 Slot 0



2.5.2 Slot 1



2.5.3 Slot 2



A Summary

A.1 Status

V&V Scientist	Jen Lauer
V&V Date (YYYY-MM-DD)	2012.07.22
V&V Edition	1
V&V Disposition and Status	OK
V&V Charge Time	24.942600191832

A.2 Comments

Charge time for this ObsId remains at previous value of 24.94 ks although with the current processing the charge time would have been 24.78 ksec.

=====

This observation was interrupted by a spacecraft anomaly. The science data in this obsid are unaffected by the anomaly.

=====

Joint Proposal: XMM