

V&V Reference Report

L2 ASCDS Version : 8.4.5

Observation 11819 - L2 Version 2
Chandra X-Ray Center

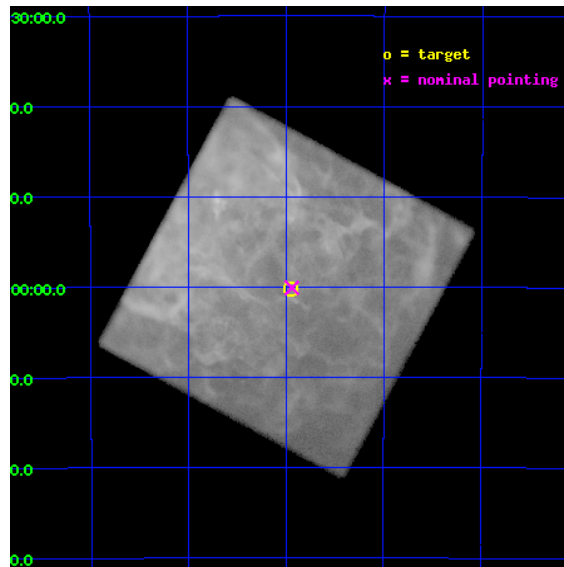
L2 Processing Date : Jul 1 2012

Contents

1	Front	2
2	OBI	3
2.1	OBI	3
2.1.1	Images	3
2.1.2	Parameters	4
2.1.3	Events	4
2.2	Compared Parameters	5
2.3	Aspect	6
2.4	Star Slots	9
2.4.1	Slot 3	9
2.4.2	Slot 4	10
2.4.3	Slot 5	11
2.4.4	Slot 6	12
2.4.5	Slot 7	13
2.5	FID Slots	14
2.5.1	Slot 0	14
2.5.2	Slot 1	15
2.5.3	Slot 2	16
A	Summary	17
A.1	Status	17
A.2	Comments	17

1 Front

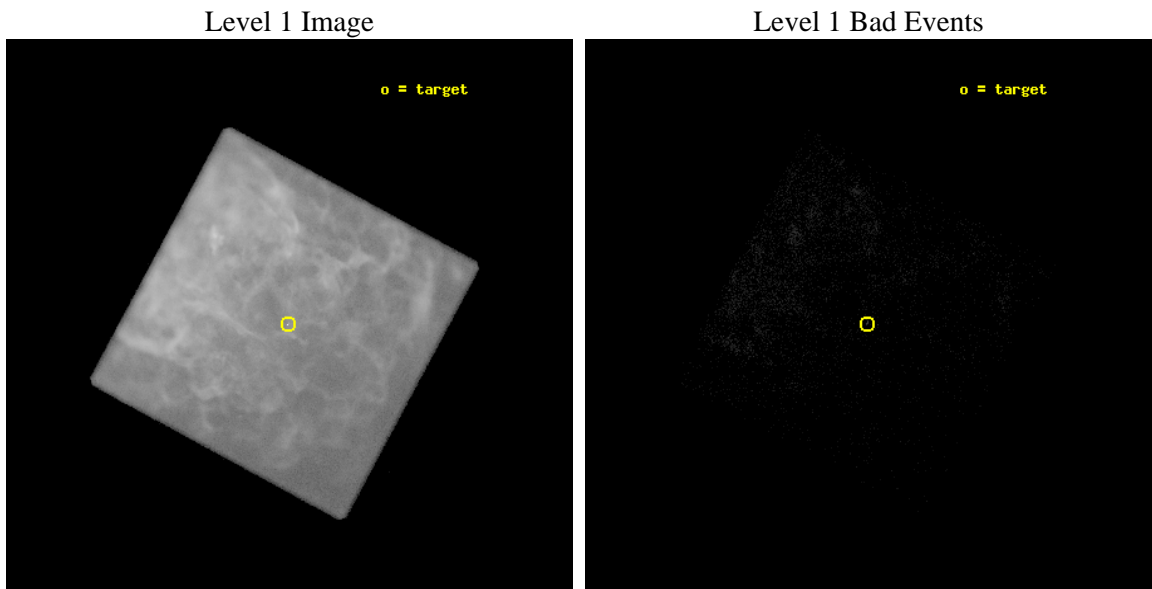
seq_num	401135	Sequence number
obs_id	11819	Observation id
title	Confirming the Proper Motion of the Neutron Star in Puppis-A	Propo
observer	Dr. Peter Predehl	Principal investigator
object	RXJ0822-4300	Source name
ra_targ	125.489583	Observer's specified target RA [deg]
dec_targ	-43.004361	Observer's specified target Dec [deg]
ra_nom	125.48504234535	Nominal RA [deg]
dec_nom	-43.001737762618	Nominal Dec [deg]
roll_nom	163.42342659234	Nominal Roll [deg]
revision	2	Processing version of data
ontime	33680.732973516	[s]
livetime	15467.0809556	Ontime multiplied by DTCOR
l2events	5460846	Number of level 2 events



2 OBI

2.1 OBI

2.1.1 Images



2.1.2 Parameters

obi_num	1	Obi number	sched_exp_time	33500.000000	[s] Scheduled observation exposure time
ascdsver	8.4.5	Processing system revision	ontime	33680.732973516	[s]
caldbver	4.5.0	 	l1events	6423785	Number of level 1 events
date	2012-07-01T17:22:17	Date and time of file creation			
revision	2	Processing version of data			

2.1.3 Events

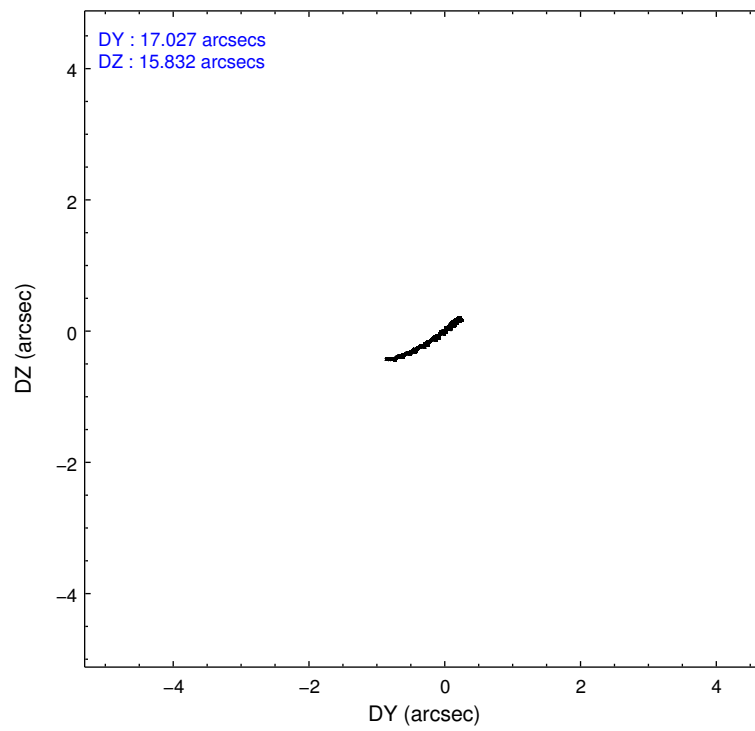
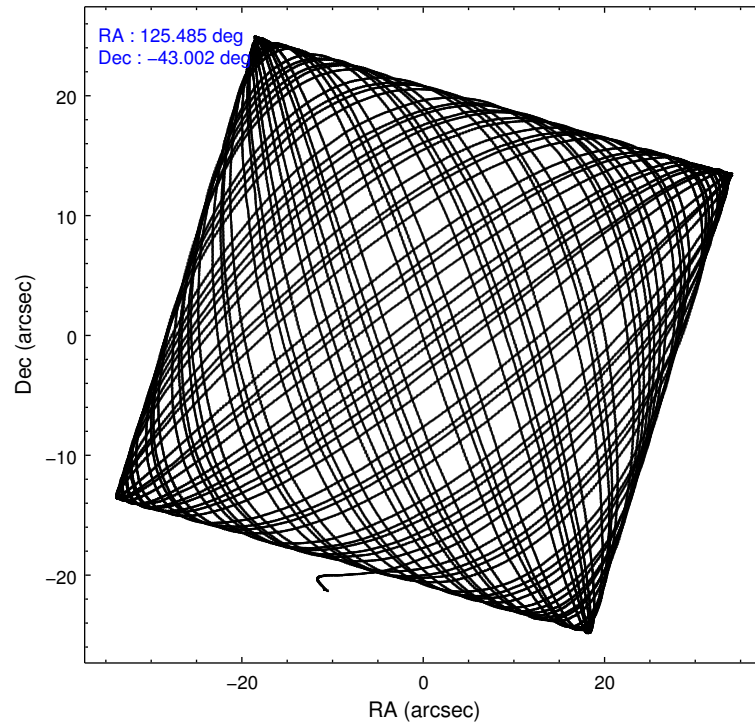
Level 1 Events

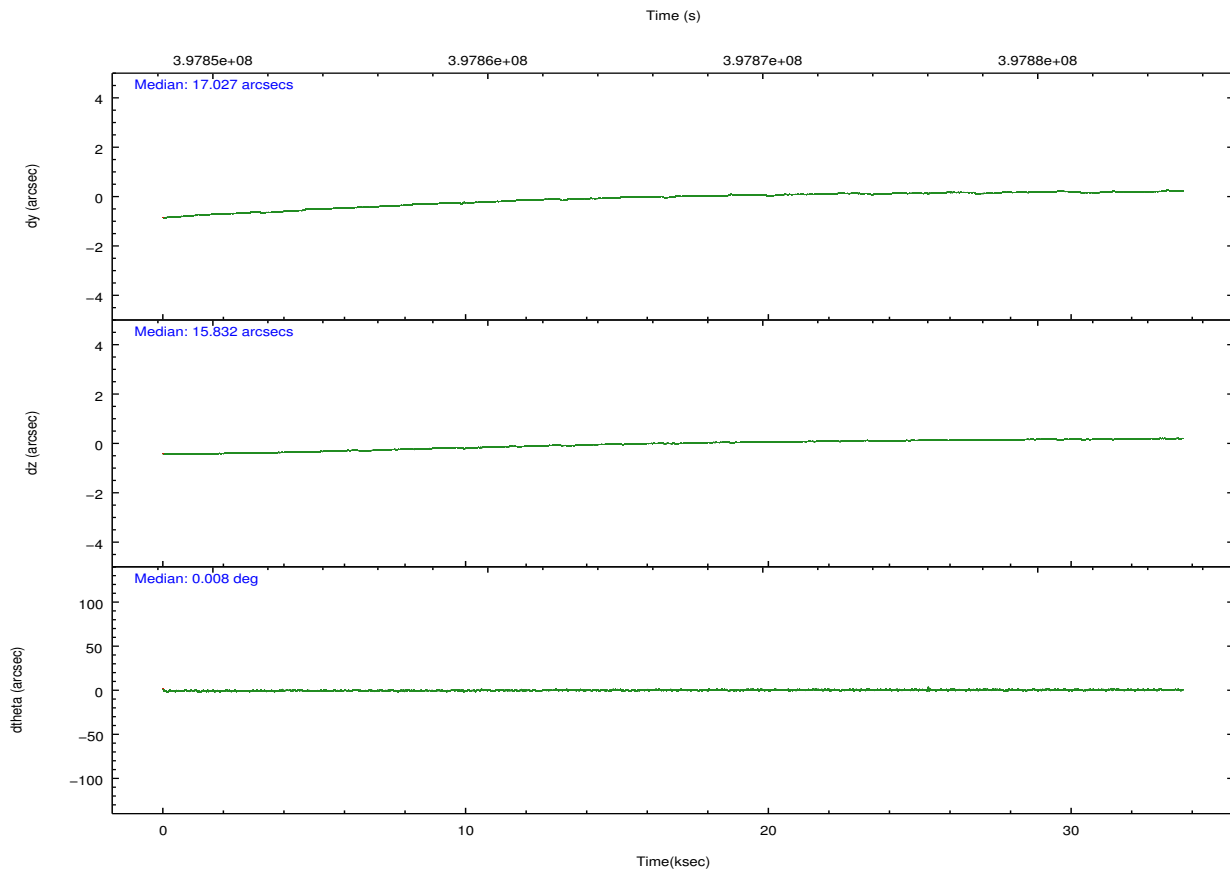
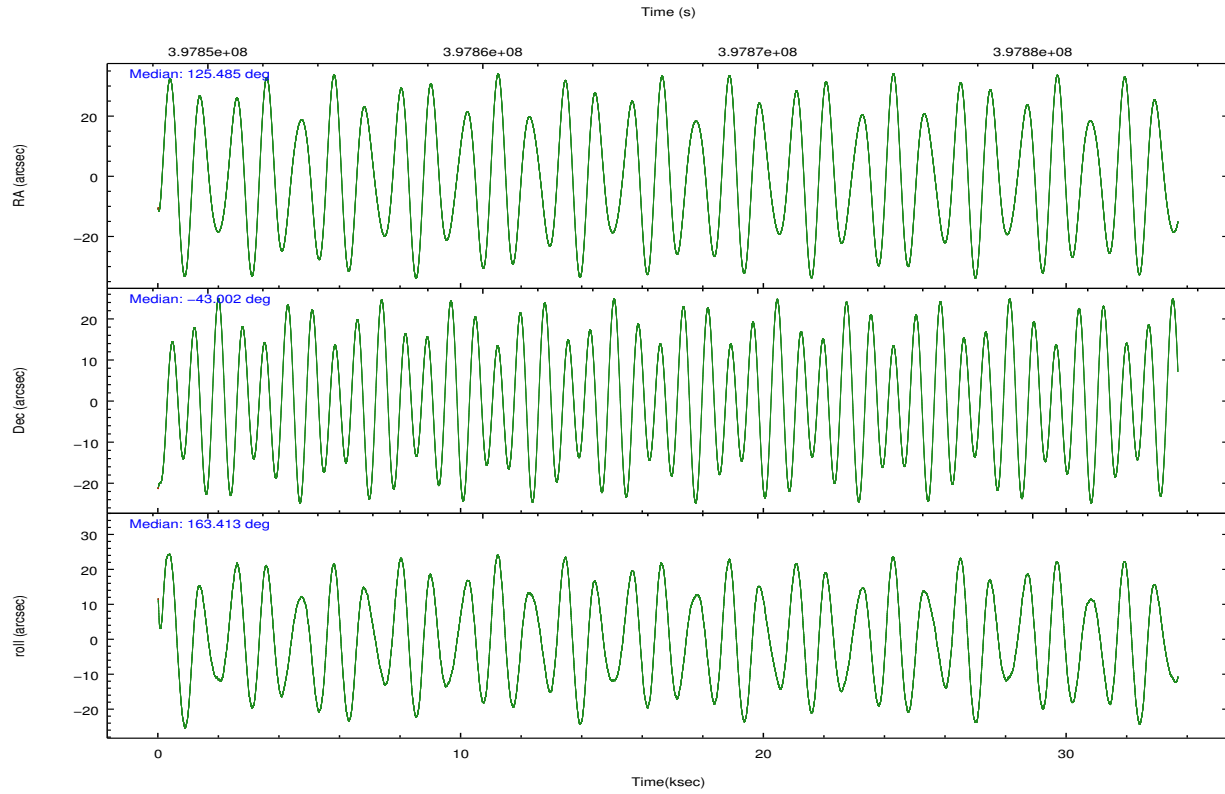
	segment 0
level 1 events	6423785
rejected events	213341
rejected %	3%

2.2 Compared Parameters

Parameter	Planned	Actual	Parameter	Planned	Actual
Instrument	HRC	HRC	Obspar format version number	7	7
Detector	HRC-I	HRC-I	Obspar file type	PREDICTED	ACTUAL
Grating	NONE	NONE	Obspar update status	NONE	UPDATED
Data mode	OBSERVING	OBSERVING			
Observation mode	POINTING	POINTING			
[deg] Pointing RA	125.521005	125.4850423453534			
[deg] Pointing Dec	-42.994815	-43.00173776261757			
[deg] Pointing Roll	163.543447	163.4234265923445			
[mm] SIM focus pos	-1.040293	-1.038866356238299			
[mm] SIM defocus	0	0.001426264420575141			
[mm] SIM translation stage pos	126.985494	126.9829799899862			
[mm] SIM translation stage offset	0	0.002508901615314585			
[s] Observation start time (MET)	397850081.184000	397848368.68595			
Observation start date	2010-08-10T17:53:35	2010-08-10T17:26:08			
[s] Observation end time (MET)	397883581.184000	397883714.78776			
Observation end date	2010-08-11T03:11:55	2010-08-11T03:15:14			

2.3 Aspect



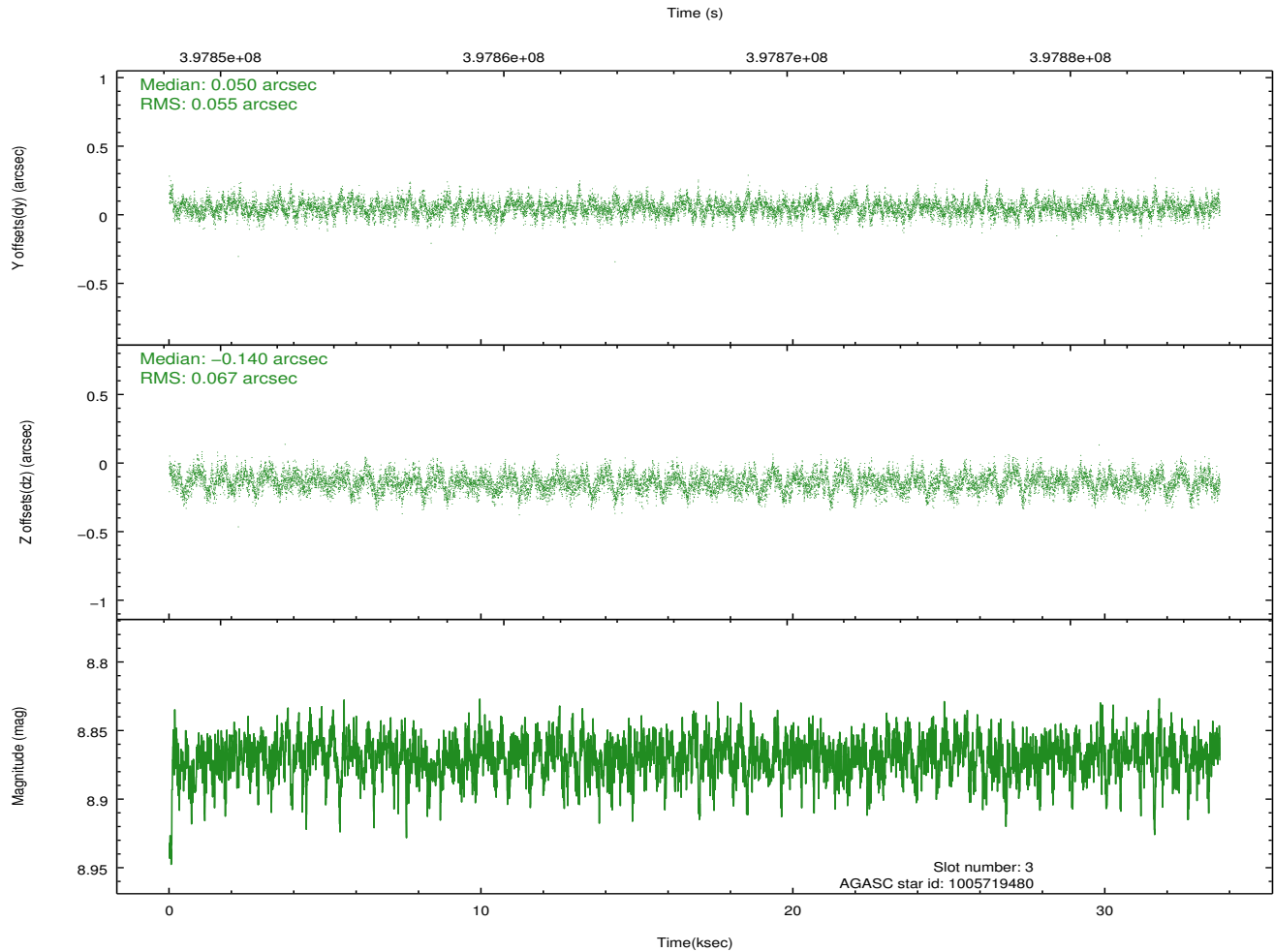
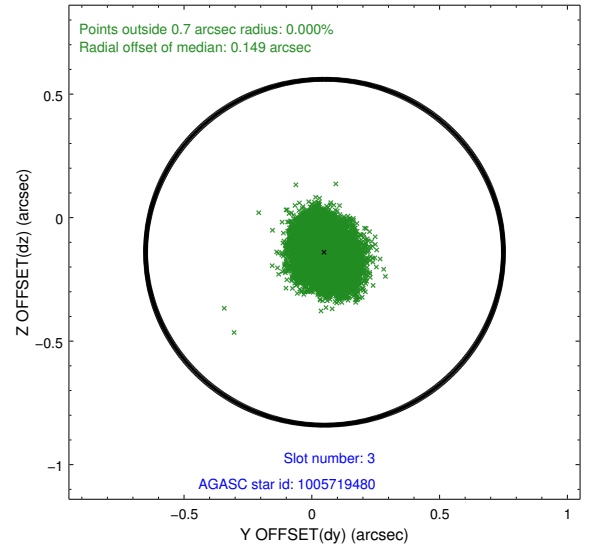
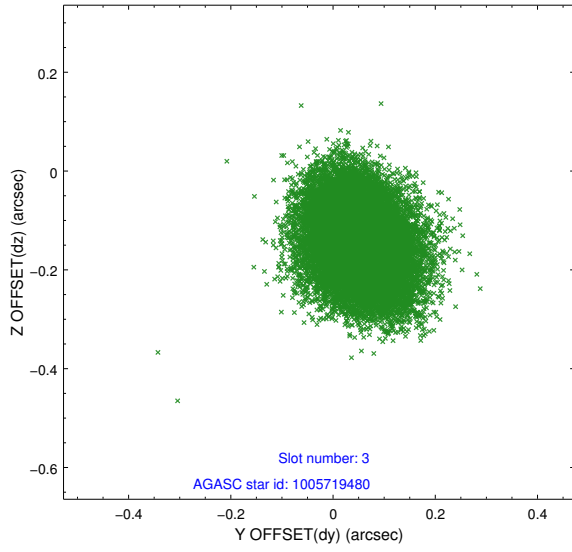


Slot Statistics

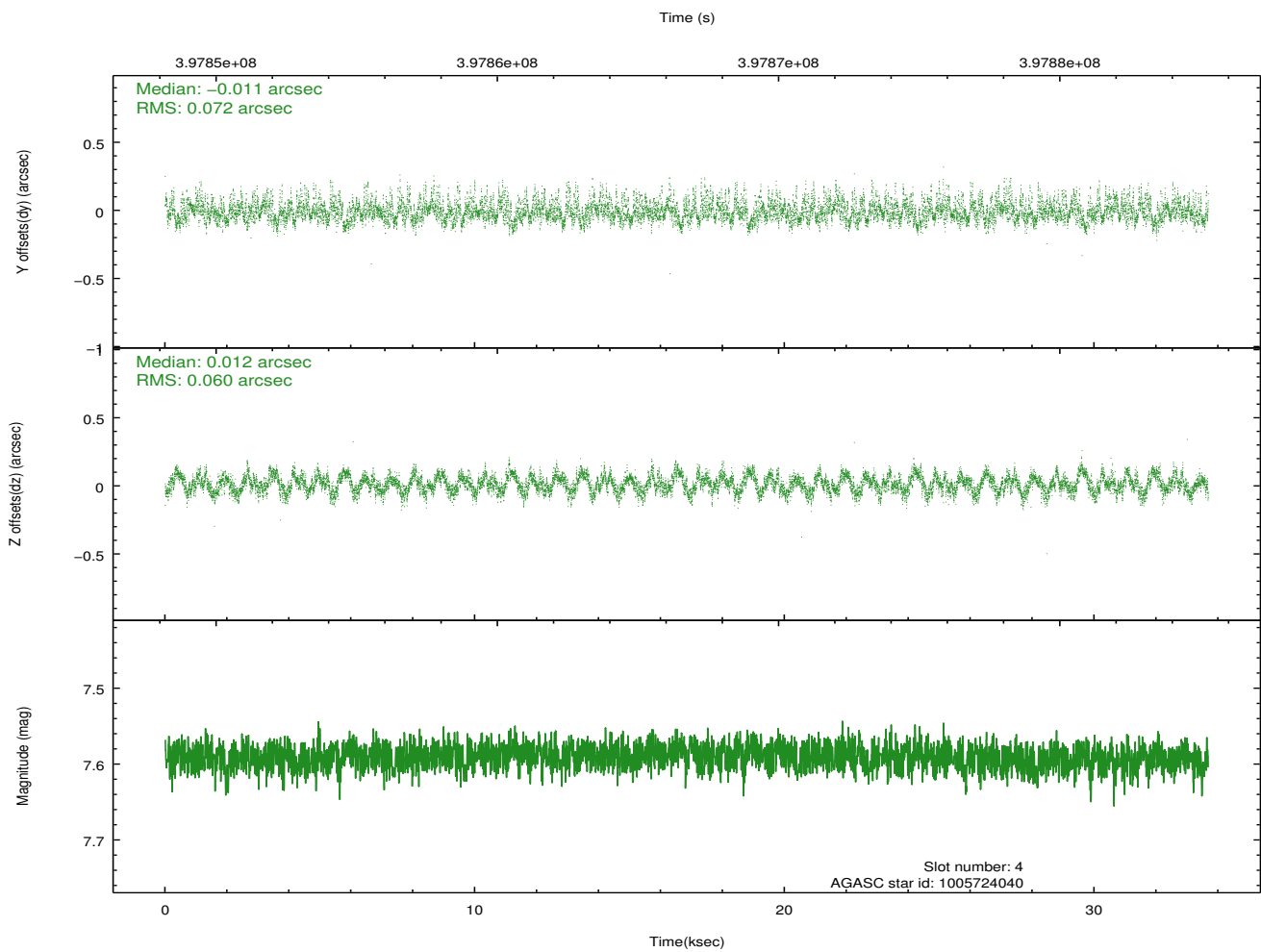
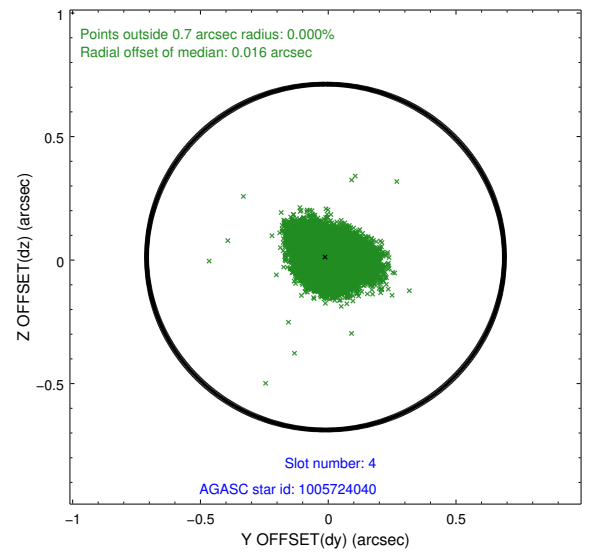
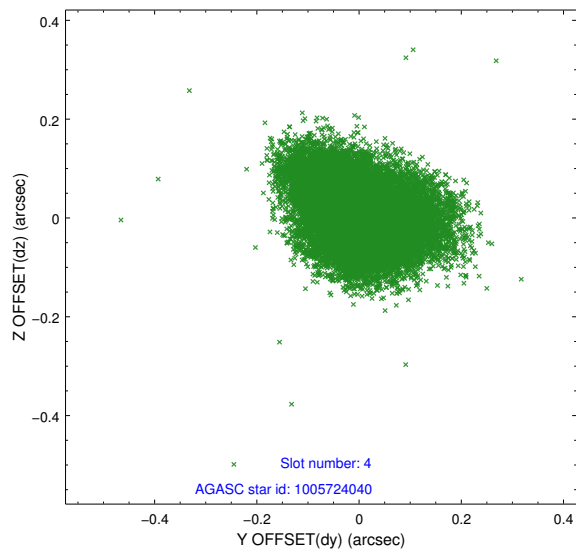
slot	status	id	mag	n_pts	med_dy	med_dz	dr1	dr2	ra	dec	mean_y	mean_z
0	FID	HRC-I-1	6.97	8216	-0.088	0.007	0.009	0.016	0.000000	0.000000	-772.83	-1303.89
1	FID	HRC-I-2	7.00	8215	0.211	-0.088	0.017	0.024	0.000000	0.000000	840.00	-1305.68
2	FID	HRC-I-3	7.04	8214	-0.004	-0.009	0.013	0.021	0.000000	0.000000	-1201.17	1000.50
3	GUIDE	1005719480	8.87	16420	0.050	-0.140	0.092	0.150	125.476619	-43.605627	-512.21	2141.77
4	GUIDE	1005724040	7.59	16424	-0.011	0.012	0.100	0.161	125.738175	-43.227880	-784.11	644.34
5	GUIDE	1005726872	7.38	16429	-0.060	-0.159	0.080	0.125	125.535449	-43.662820	-717.64	2295.61
6	GUIDE	1005723560	8.46	16417	0.034	0.120	0.084	0.139	126.279097	-43.364629	-2282.40	723.49
7	GUIDE	1005219184	9.87	16353	-0.020	0.169	0.154	0.253	125.451801	-42.433714	748.88	-1884.33

2.4 Star Slots

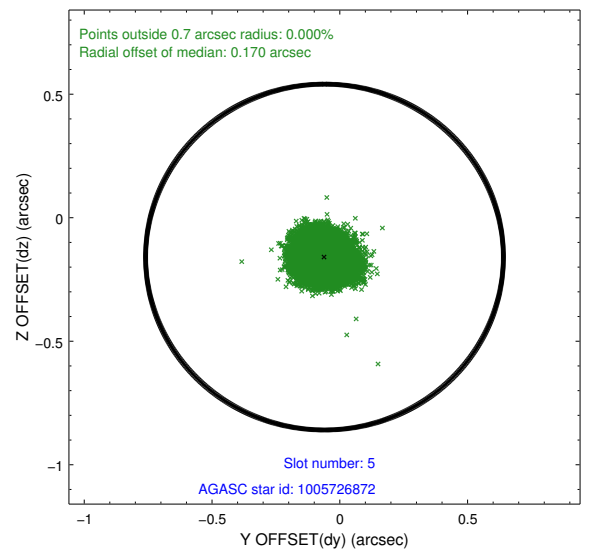
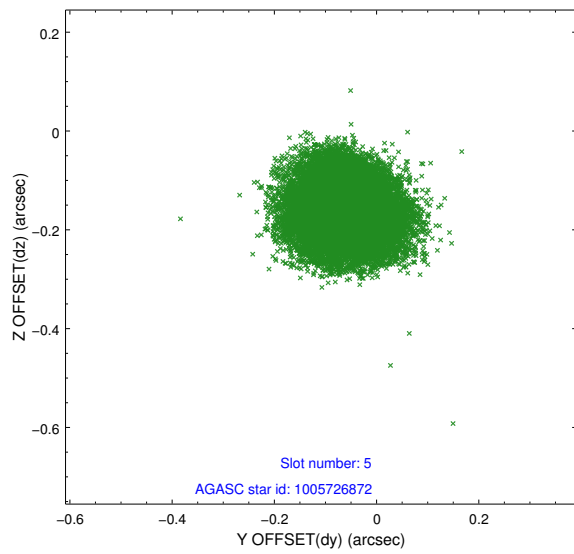
2.4.1 Slot 3



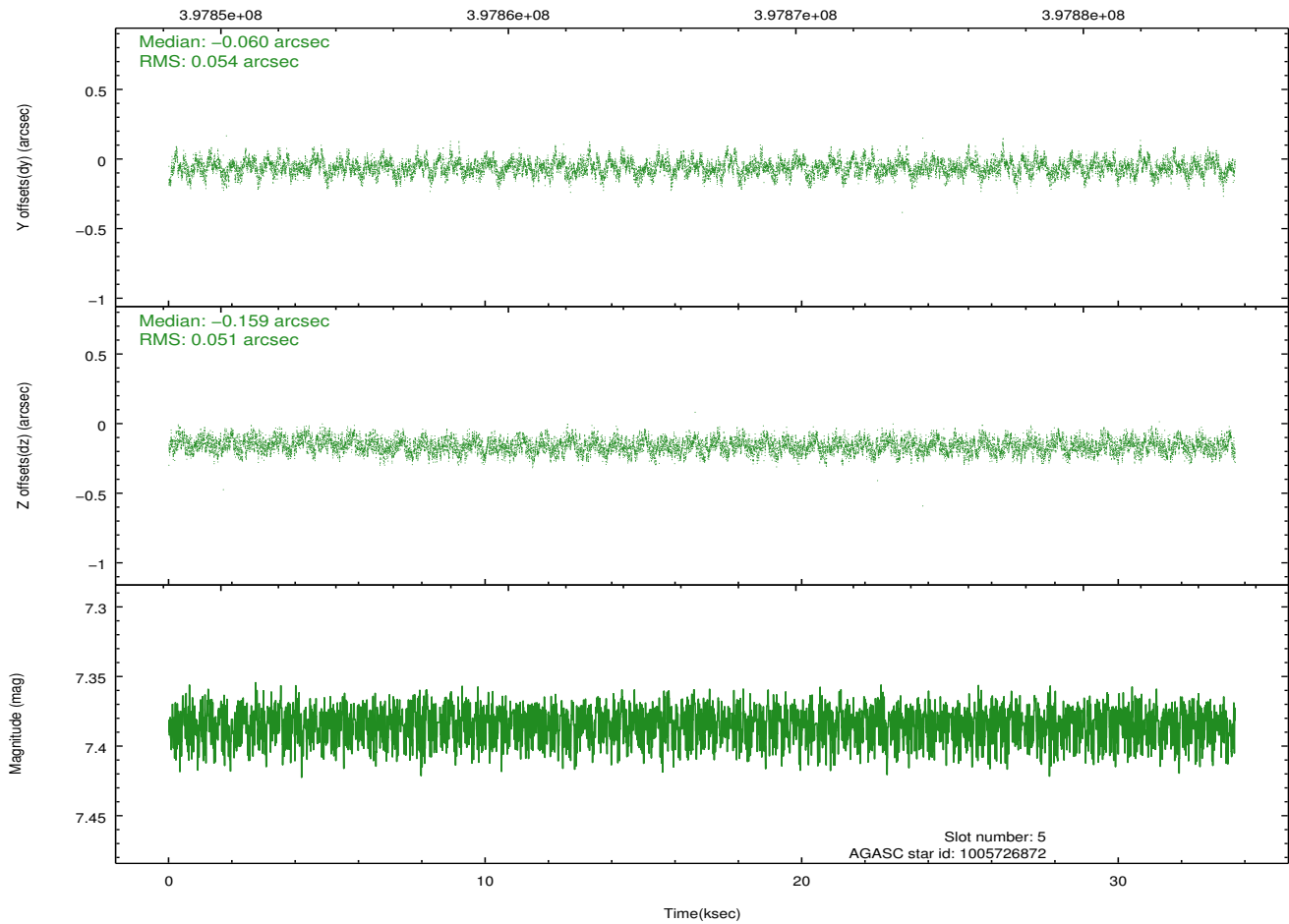
2.4.2 Slot 4



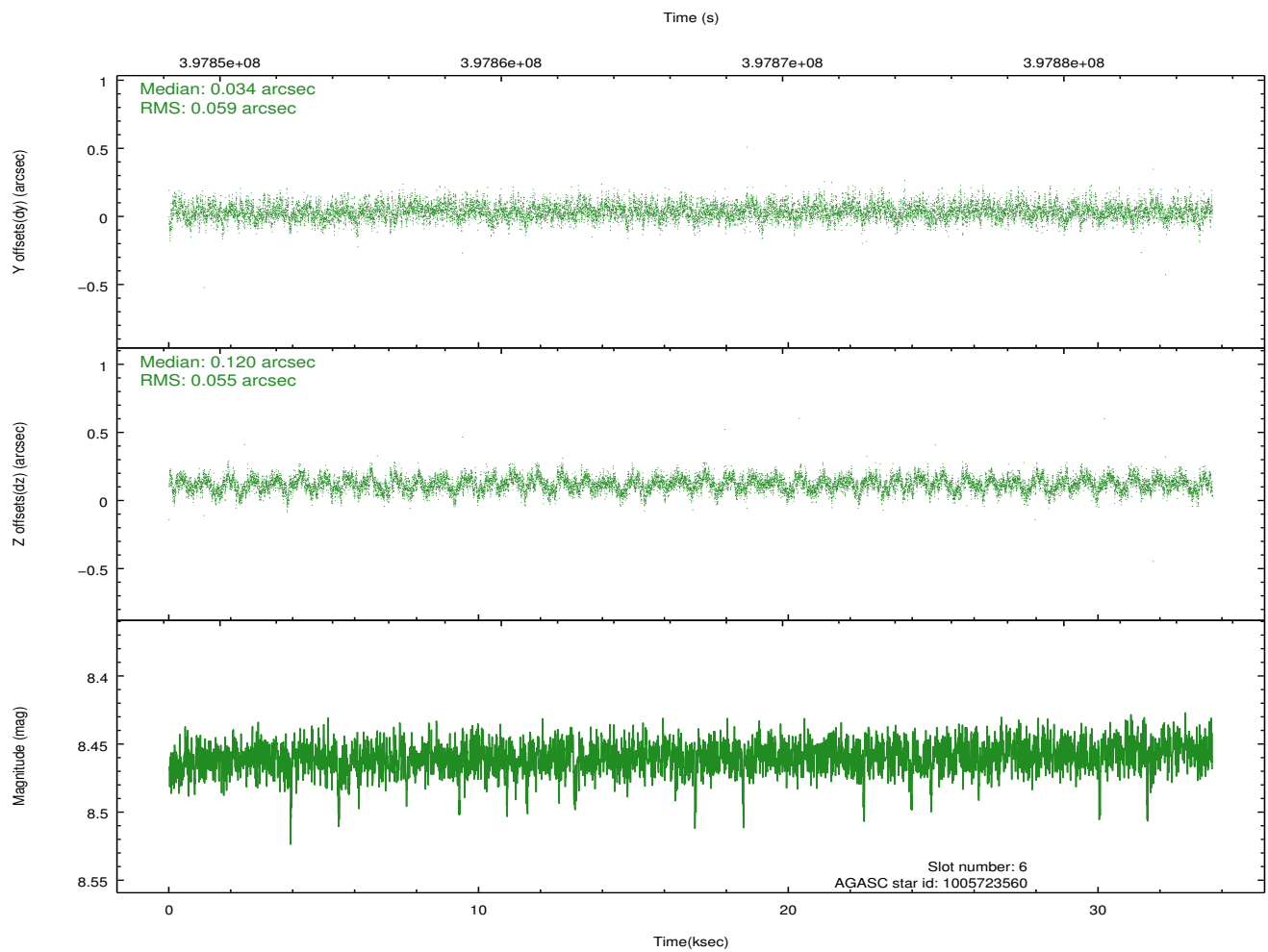
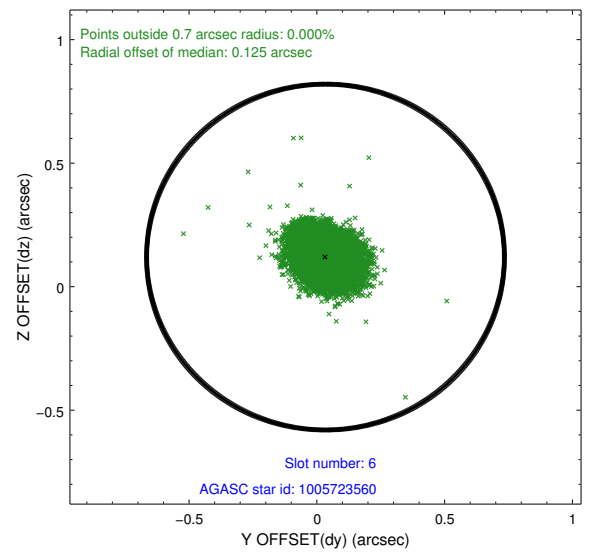
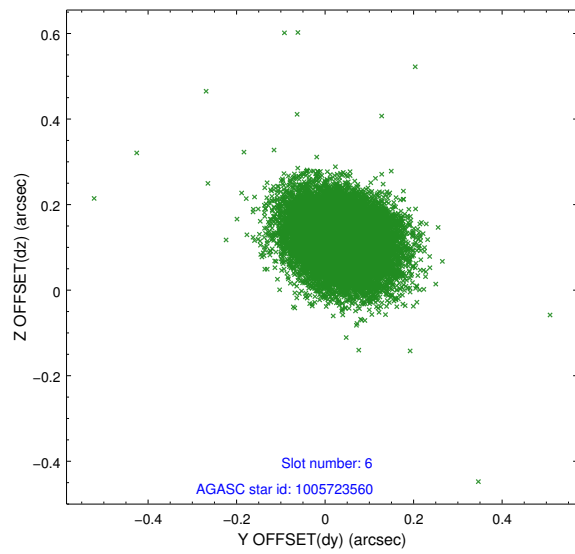
2.4.3 Slot 5



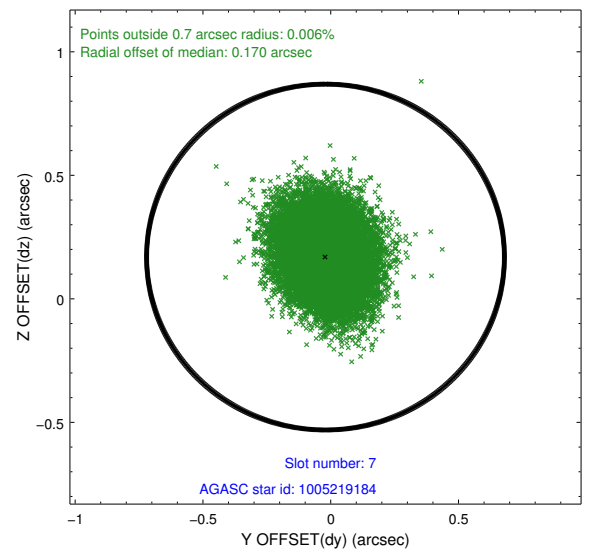
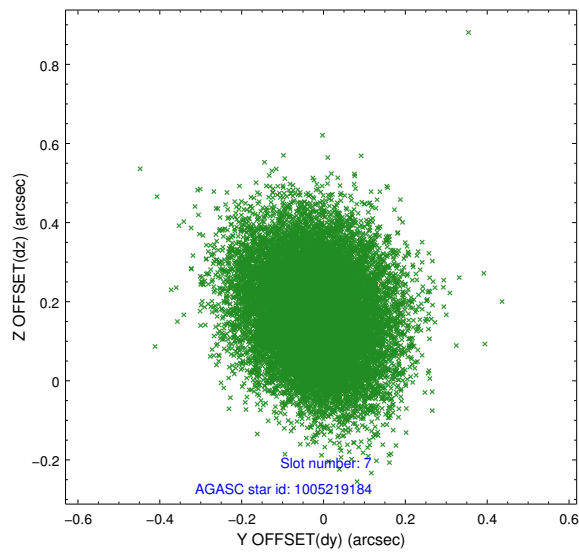
Time (s)



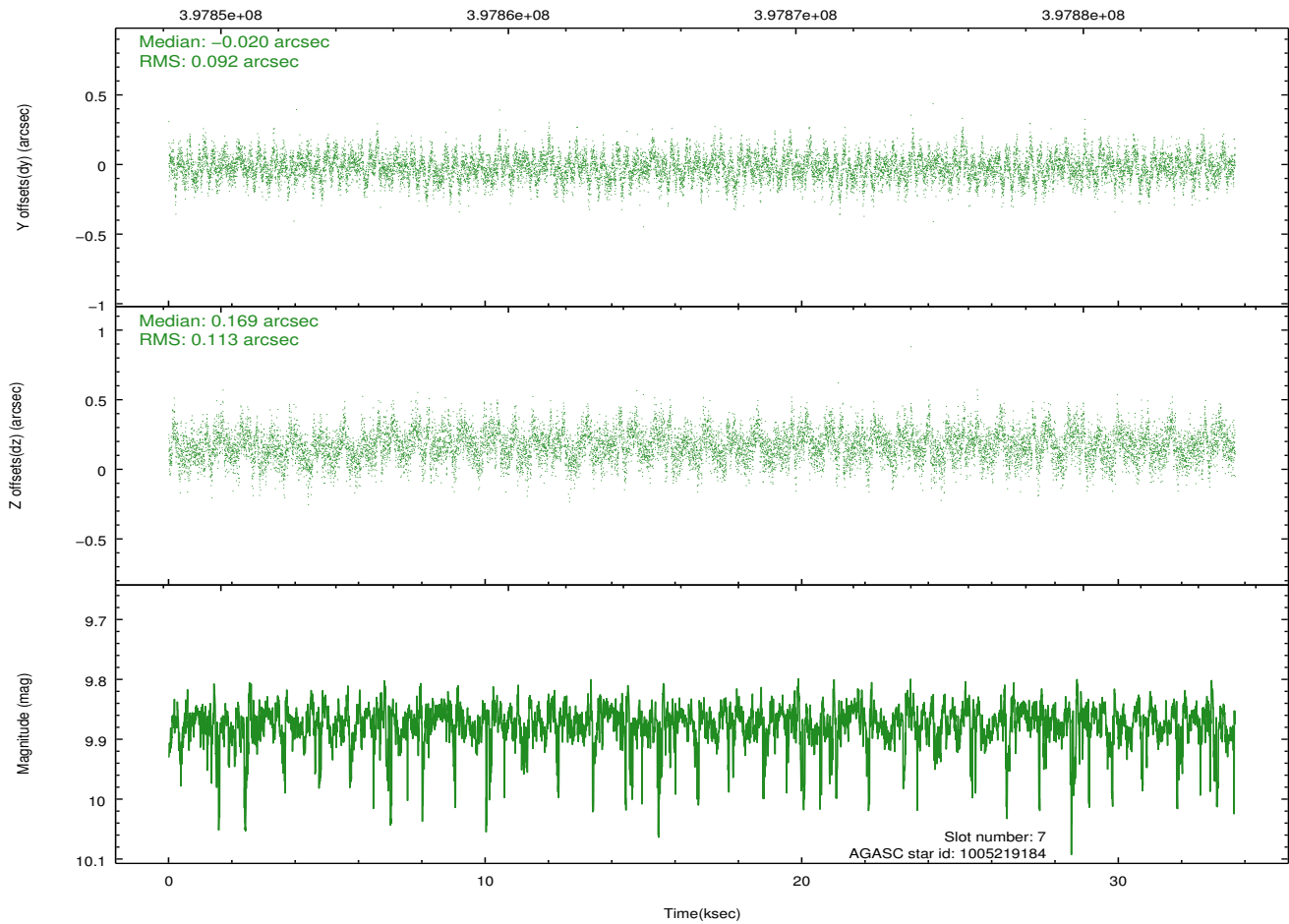
2.4.4 Slot 6



2.4.5 Slot 7

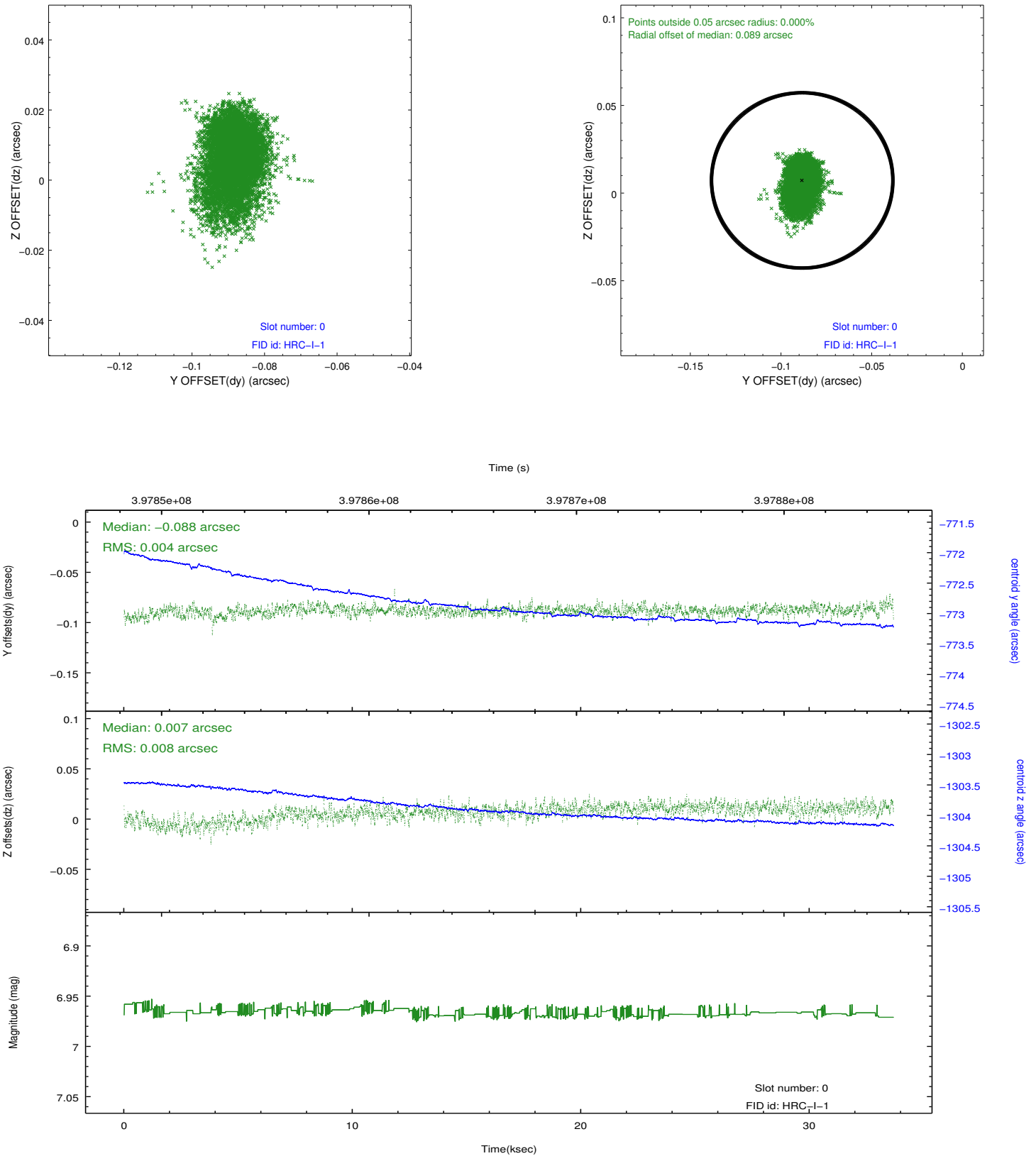


Time (s)

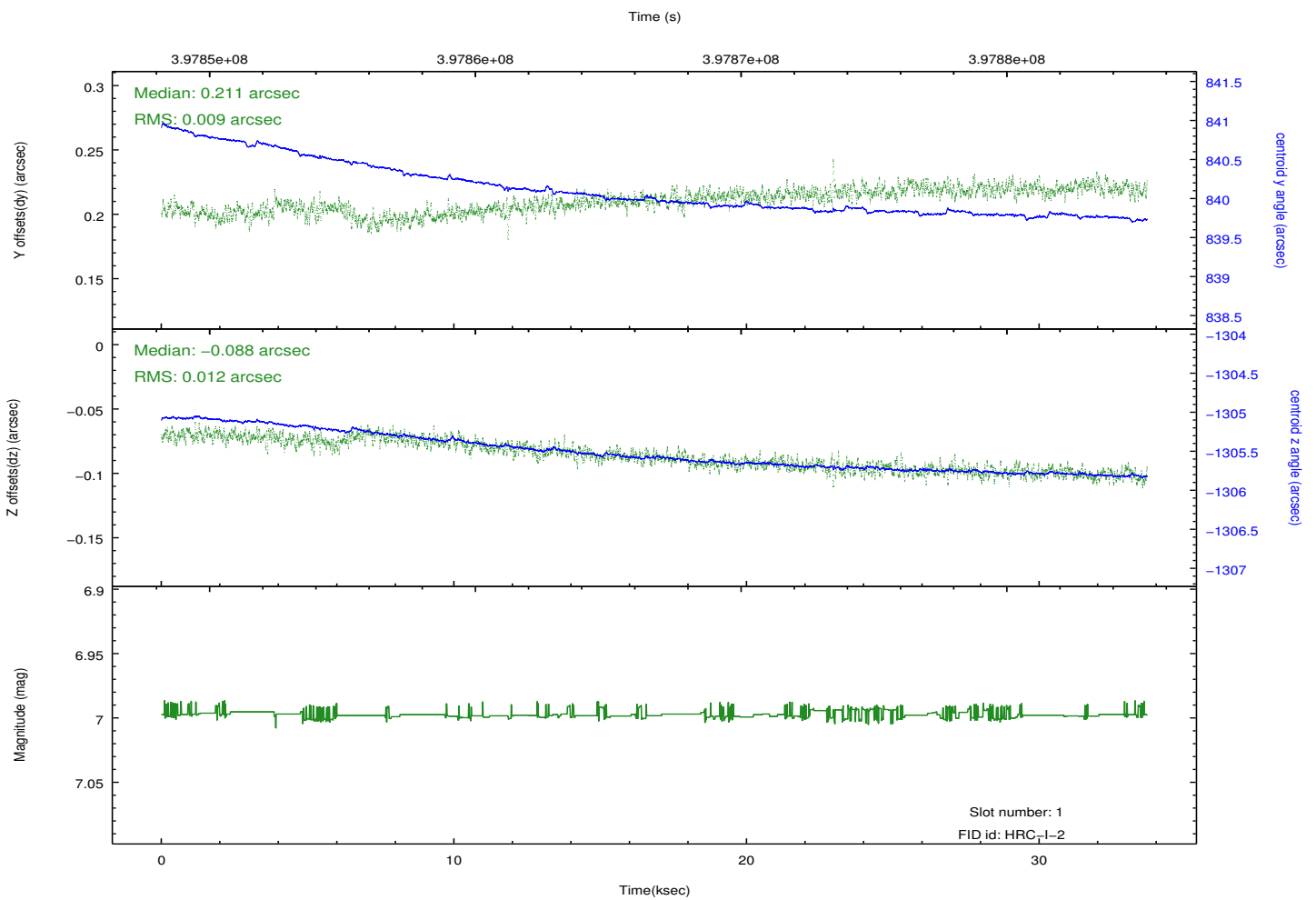
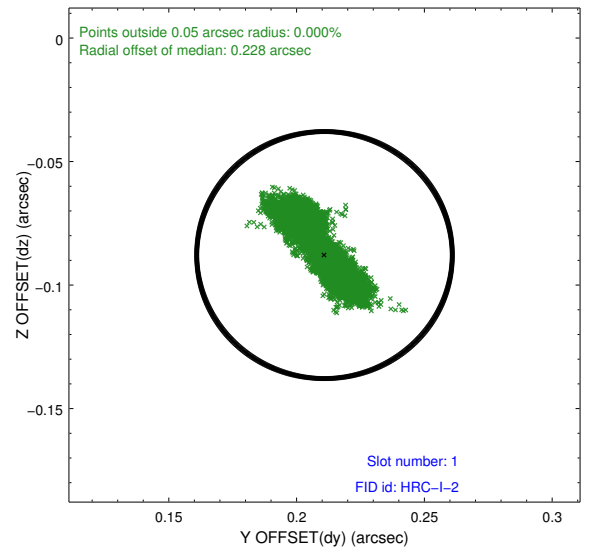
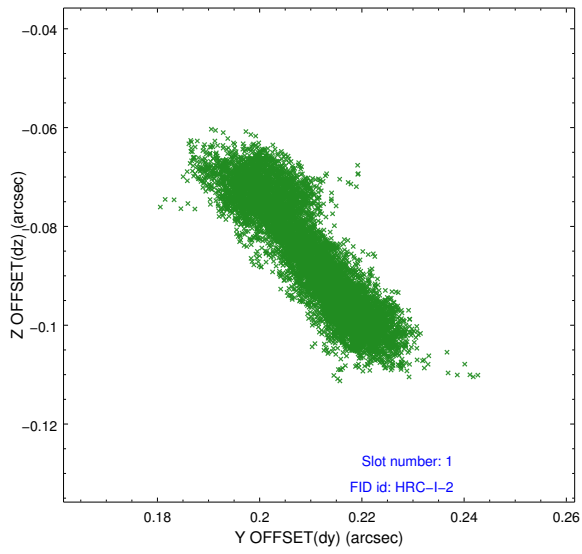


2.5 FID Slots

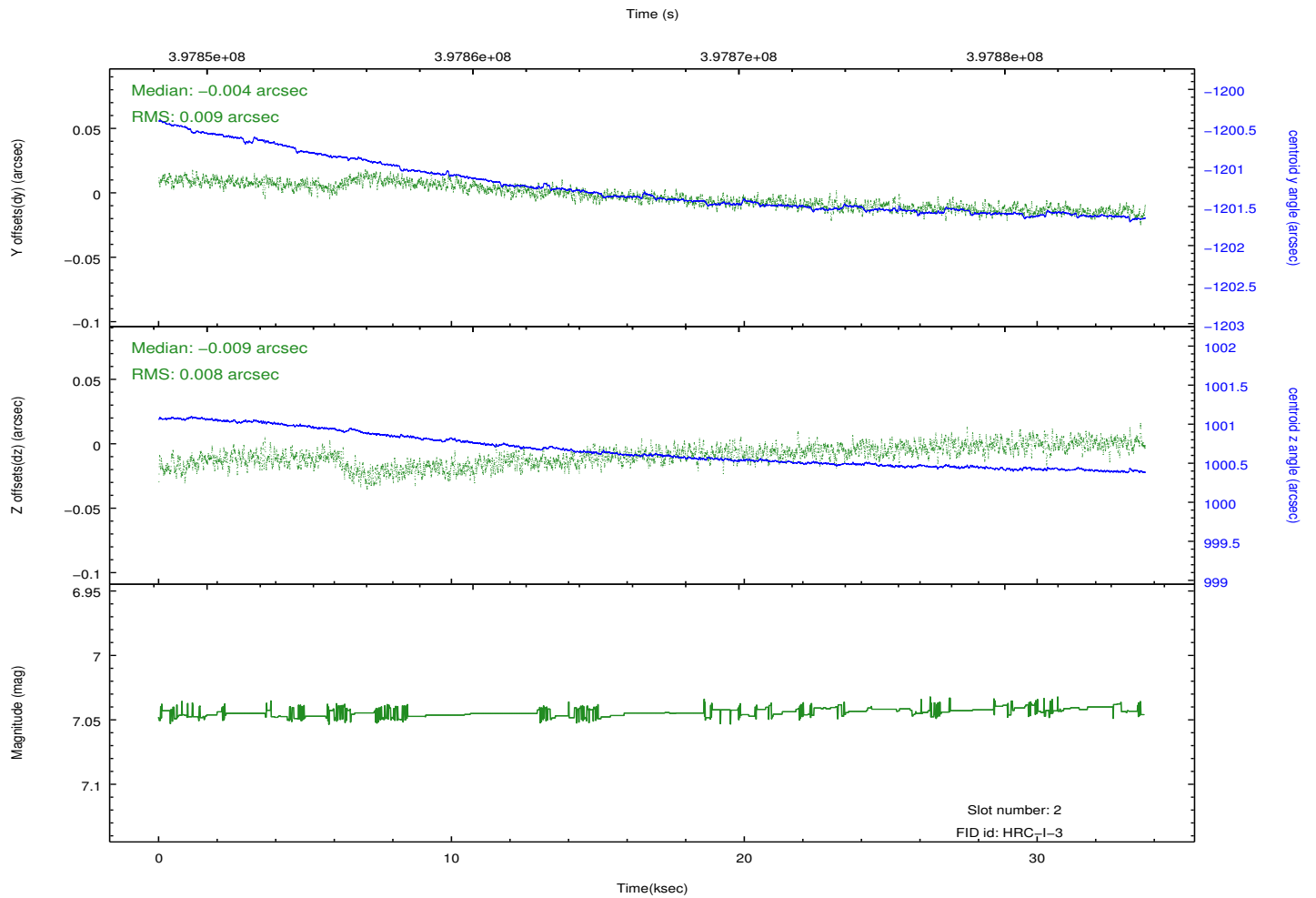
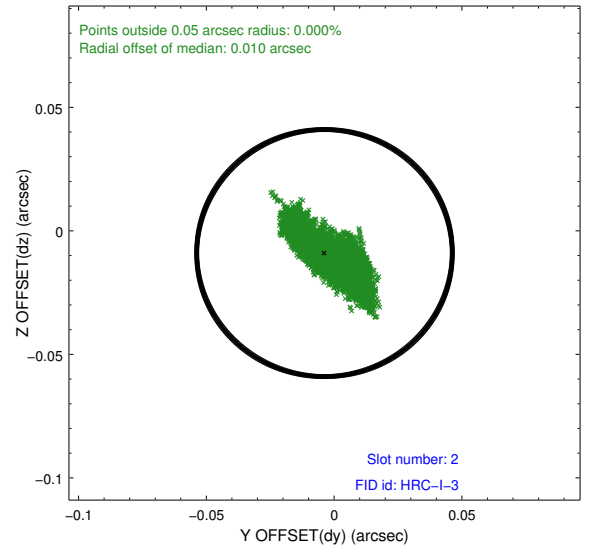
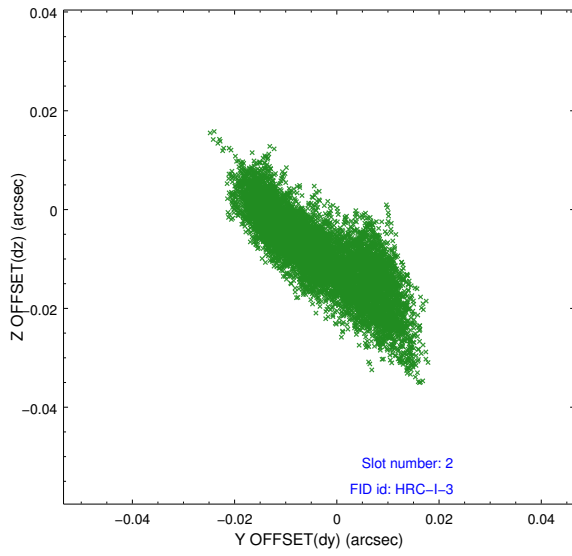
2.5.1 Slot 0



2.5.2 Slot 1



2.5.3 Slot 2



A Summary

A.1 Status

V&V Scientist	Beth Sundheim
V&V Date (YYYY-MM-DD)	2012.07.10
V&V Edition	1
V&V Disposition and Status	OK
V&V Charge Time	33.680732949376

A.2 Comments