

V&V Reference Report

L2 ASCDS Version : 8.4.5

Observation 11999 - L2 Version 2
Chandra X-Ray Center

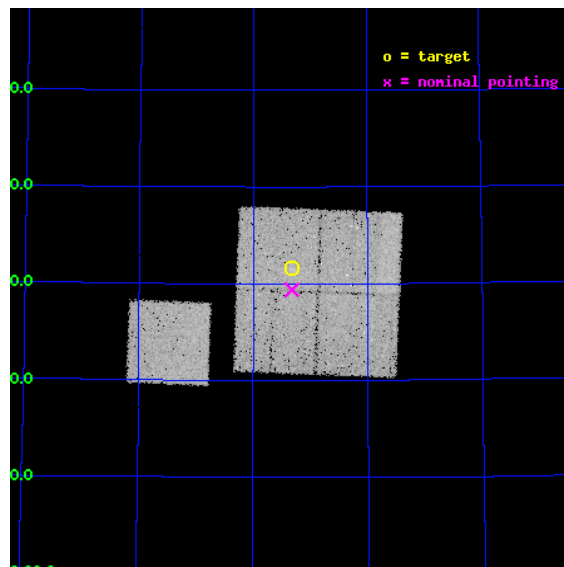
L2 Processing Date : Jun 14 2012

Contents

1	Front	2
2	OBI	3
2.1	OBI	3
2.1.1	Images	3
2.1.2	Bias	3
2.1.3	Parameters	4
2.1.4	Events	4
2.2	Compared Parameters	5
2.3	Aspect	6
2.4	Star Slots	9
2.4.1	Slot 3	9
2.4.2	Slot 4	10
2.4.3	Slot 5	11
2.4.4	Slot 6	12
2.4.5	Slot 7	13
2.5	FID Slots	14
2.5.1	Slot 0	14
2.5.2	Slot 1	15
2.5.3	Slot 2	16
A	Summary	17
A.1	Status	17
A.2	Comments	17

1 Front

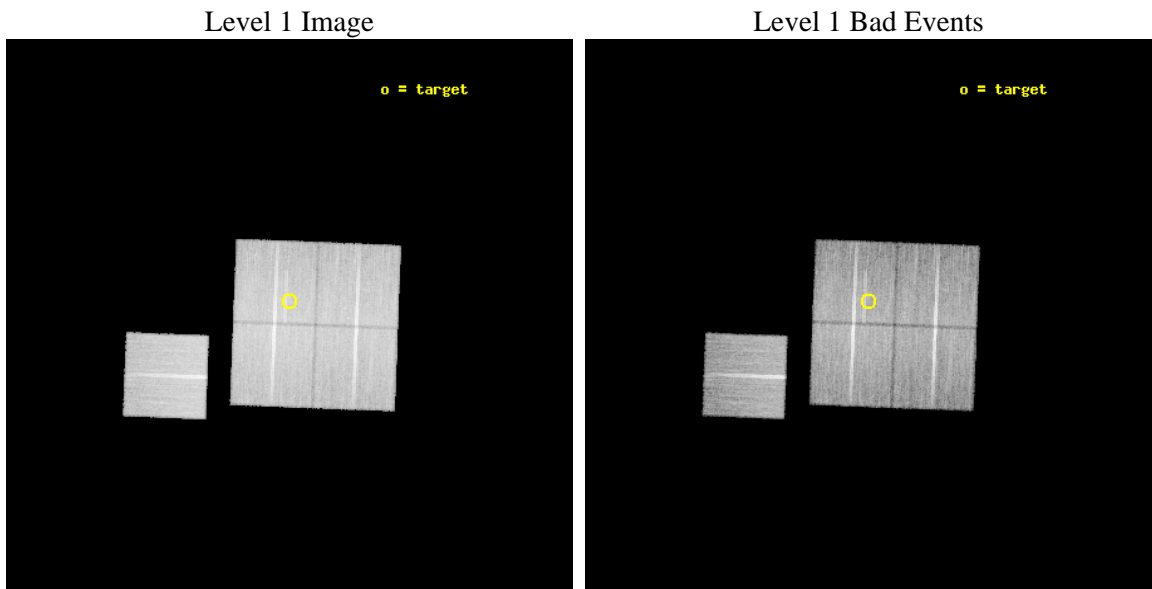
seq_num	800804	Sequence number
obs_id	11999	Observation id
title	Local versus Large Scale : The Active Galaxy Population in High-Redshift Clusters	Proposal title
observer	Prof Lori Lubin	Principal investigator
object	RX J1757.3+6631	Source name
dtcycle	0	
cycle	P	events from which exps? Prim/Second/Both
ra_targ	269.3325	Observer's specified target RA [deg]
dec_targ	66.5275	Observer's specified target Dec [deg]
ra_nom	269.33141361602	Nominal RA [deg]
dec_nom	66.48974826828	Nominal Dec [deg]
roll_nom	272.20969971767	Nominal Roll [deg]
revision	2	Processing version of data
ontime	25029.277440906	Sum of GTIs [s]
livetime	24702.251504854	Livetime [s]
ontime0	25035.559222221	Sum of GTIs [s]
ontime1	25032.418311656	Sum of GTIs [s]
ontime2	25038.700192571	Sum of GTIs [s]
ontime3	25029.277440906	Sum of GTIs [s]
ontime6	25029.277221918	Sum of GTIs [s]
l2events	93977	Number of level 2 events



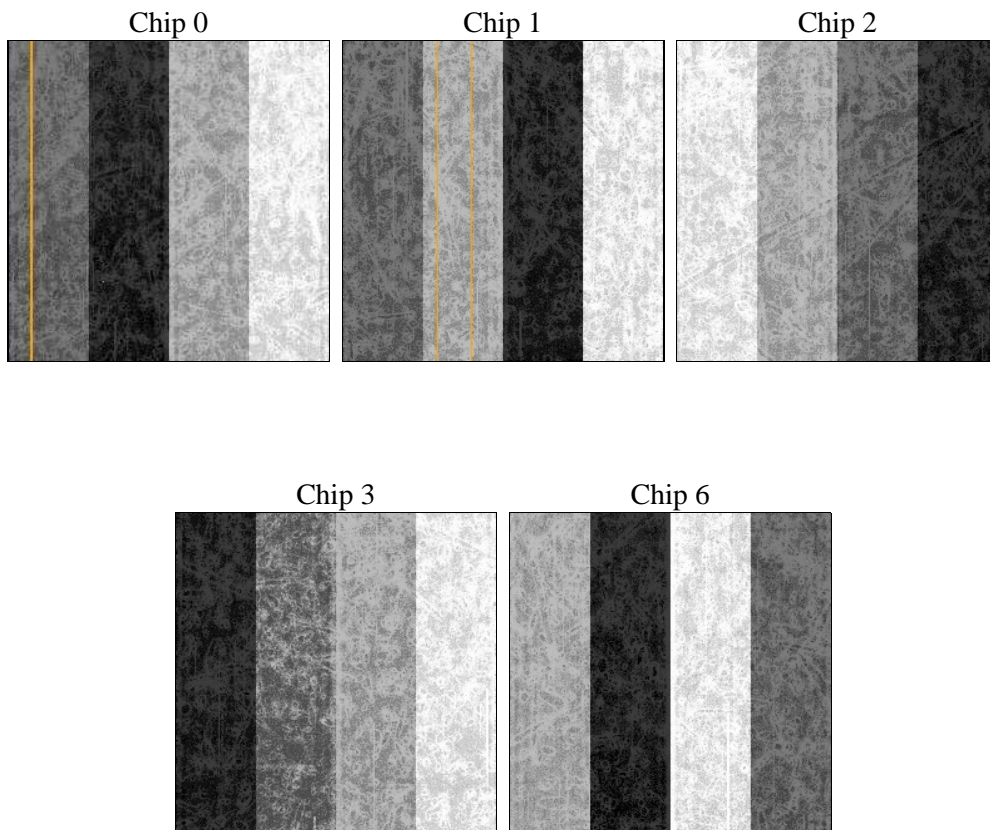
2 OBI

2.1 OBI

2.1.1 Images



2.1.2 Bias



2.1.3 Parameters

obi_num	0	Obi number	sched_exp_time	25000.000000	[s] Scheduled observation exposure time
ascdsver	8.4.5	Processing system revision	ontime	25029.277440906	Sum of GTIs [s]
caldbver	4.4.10	 	ontime0	25035.559222221	Sum of GTIs [s]
date	2012-06-14T12:44:58	Date and time of file creation	ontime1	25032.418311656	Sum of GTIs [s]
revision	2	Processing version of data	ontime2	25038.700192571	Sum of GTIs [s]
			ontime3	25029.277440906	Sum of GTIs [s]
			ontime6	25029.277221918	Sum of GTIs [s]
			l1events	1074785	Number of level 1 events

2.1.4 Events

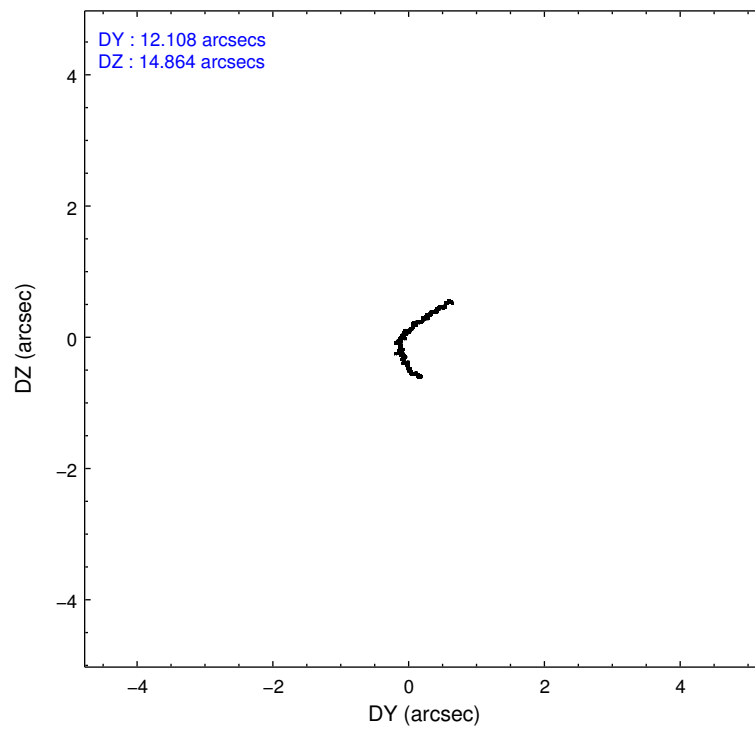
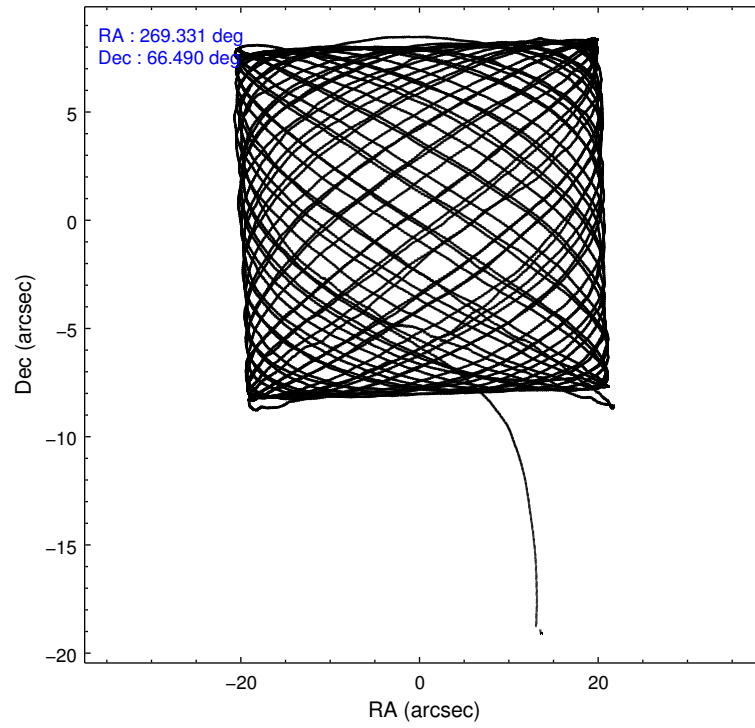
	ccd 0	ccd 1	ccd 2	ccd 3	ccd 6
level 1 events	202264	206175	226183	215721	224442
rejected events	180224	180805	204368	194506	201551
rejected %	89%	87%	90%	90%	89%

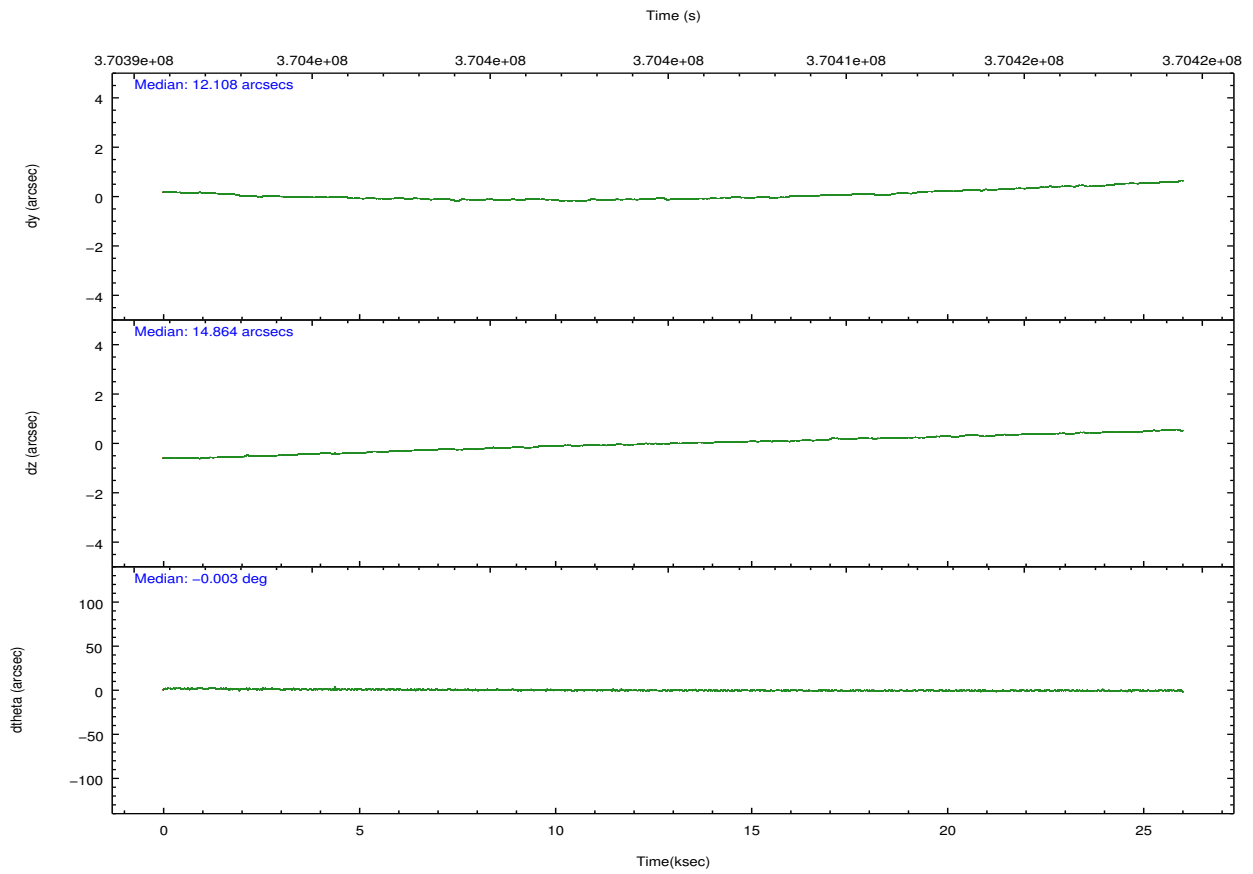
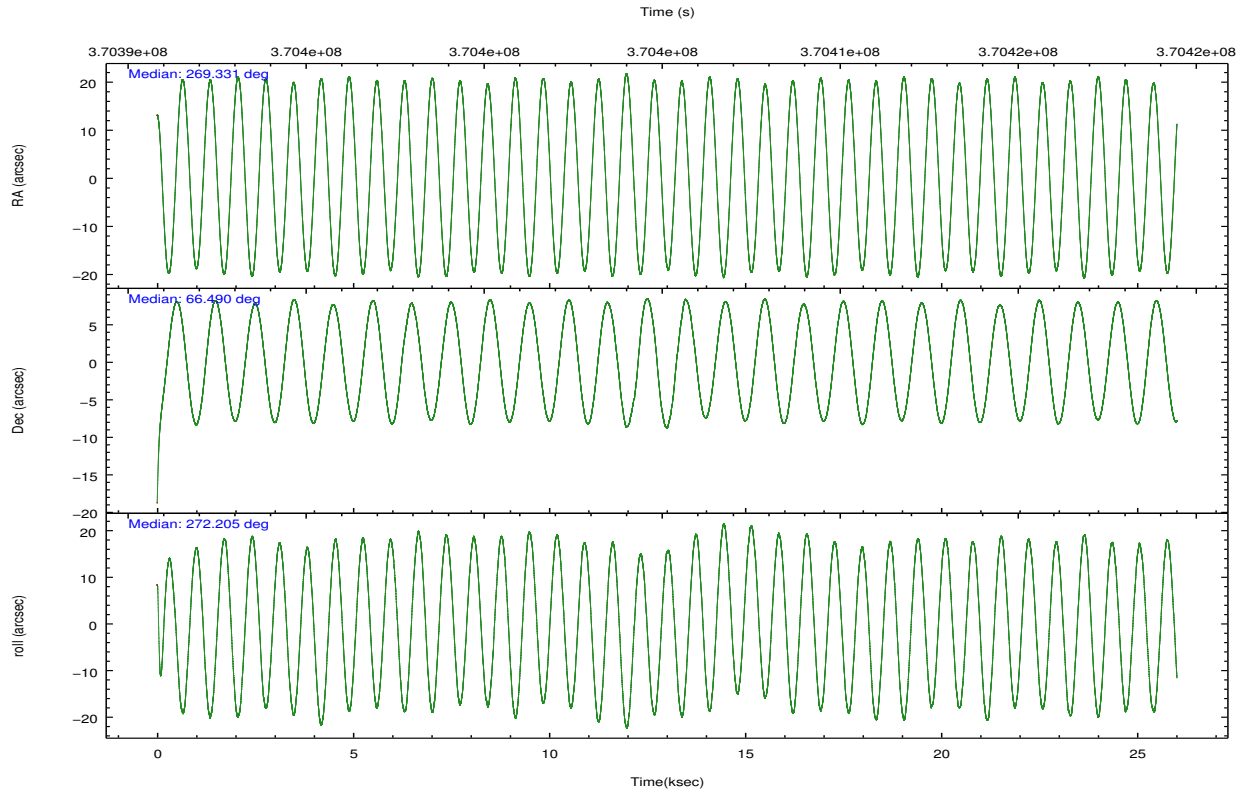
	ccd 0	ccd 1	ccd 2	ccd 3	ccd 6
grade 0 events	7636	9164	7648	7533	7844
	3%	4%	3%	3%	3%
grade 1 events	129	109	121	152	108
	0%	0%	0%	0%	0%
grade 2 events	5365	5935	5438	4659	5222
	2%	2%	2%	2%	2%
grade 3 events	2390	2634	2305	2310	2523
	1%	1%	1%	1%	1%
grade 4 events	2277	2586	2293	2418	2412
	1%	1%	1%	1%	1%
grade 5 events	8106	8719	7407	9095	9039
	4%	4%	3%	4%	4%
grade 6 events	4379	5061	4139	4315	4891
	2%	2%	1%	2%	2%
grade 7 events	171982	171967	196832	185239	192403
	85%	83%	87%	85%	85%

2.2 Compared Parameters

Parameter	Planned	Actual	Parameter	Planned	Actual
Instrument	ACIS	ACIS	Obspar format version number	7	7
Detector	ACIS-01236	ACIS-01236	Obspar file type	PREDICTED	ACTUAL
Grating	NONE	NONE	Obspar update status	NONE	UPDATED
Data mode	VFAINT	VFAINT	CCD I0 on	Y	Y
Observation mode	POINTING	POINTING	CCD I1 on	Y	Y
[deg] Pointing RA	269.294433	269.3314136160156	CCD I2 on	Y	Y
[deg] Pointing Dec	66.512961	66.4897482682801	CCD I3 on	Y	Y
[deg] Pointing Roll	272.034909	272.209699717672	CCD S0 on	N	N
[mm] SIM focus pos	-0.782348	-0.7809083437167272	CCD S1 on	N	N
[mm] SIM defocus	0	0.001439871863259334	CCD S2 on	O1	Y
[mm] SIM translation stage pos	-227.592463	-227.5933067819097	CCD S3 on	N	N
[mm] SIM translation stage offset	-6	-5.999146221020027	CCD S4 on	N	N
[s] Observation start time (MET)	370393130.184000	370391281.7808	CCD S5 on	N	N
Observation start date	2009-09-26T22:57:44	2009-09-26T22:28:01	Number of optional ACIS chips dropped	0	0
[s] Observation end time (MET)	370418130.184000	370418881.95719	On-chip summing requested	N	N
Observation end date	2009-09-27T05:54:24	2009-09-27T06:08:01	Subarray requested	NONE	NONE
Read mode	TIMED	TIMED	Alternating exposures requested	N	N
			[s] Primary exposure time	0.000000	3.1

2.3 Aspect



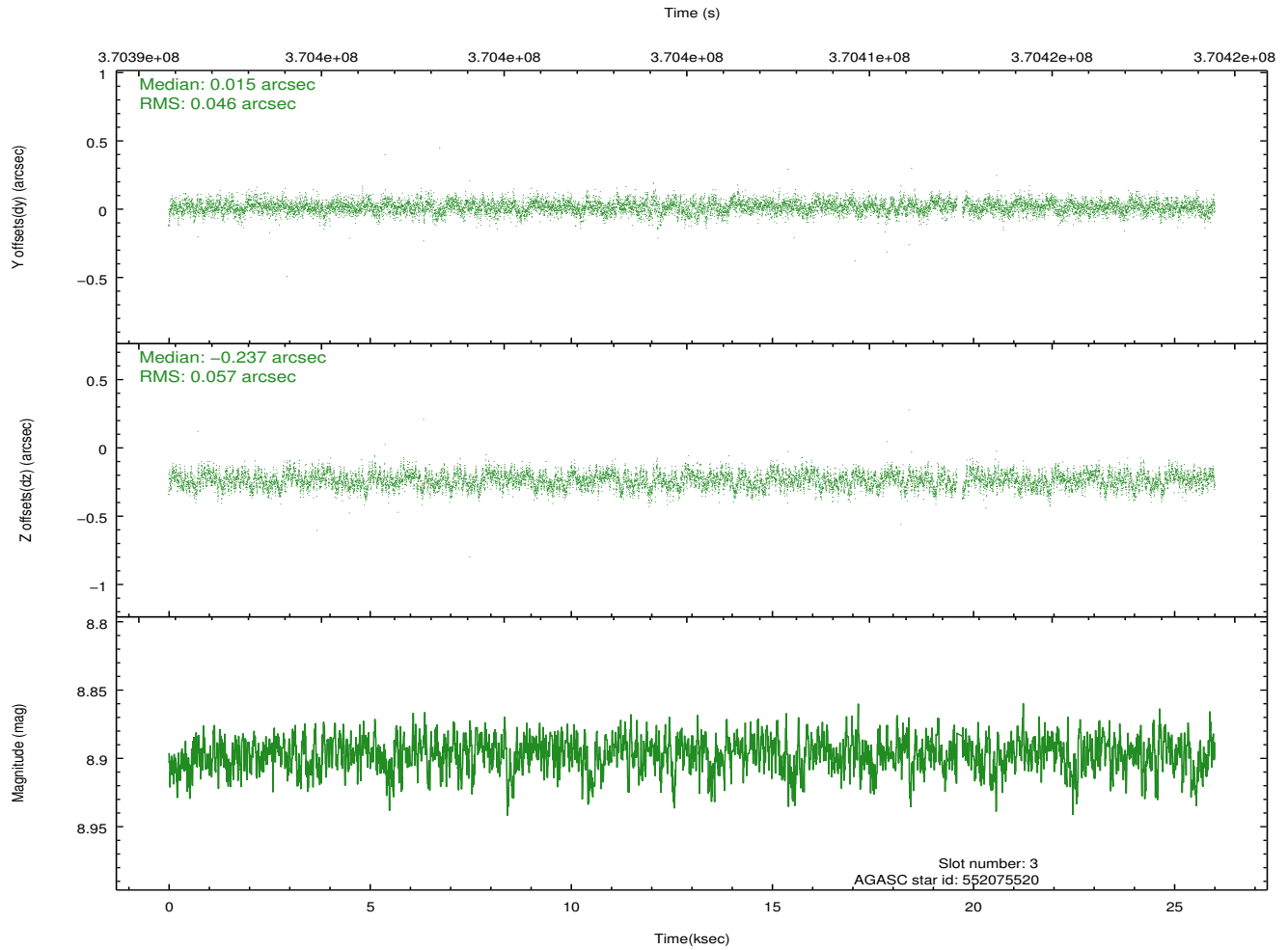
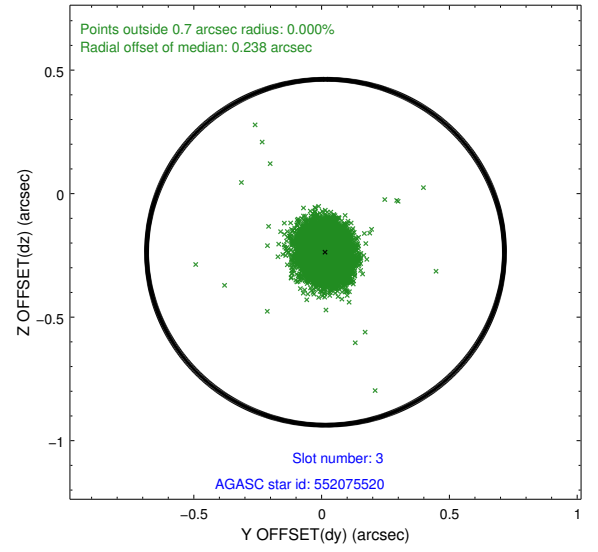
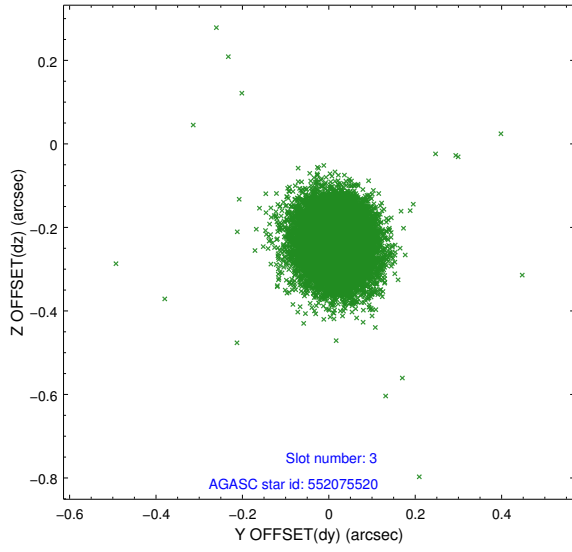


Slot Statistics

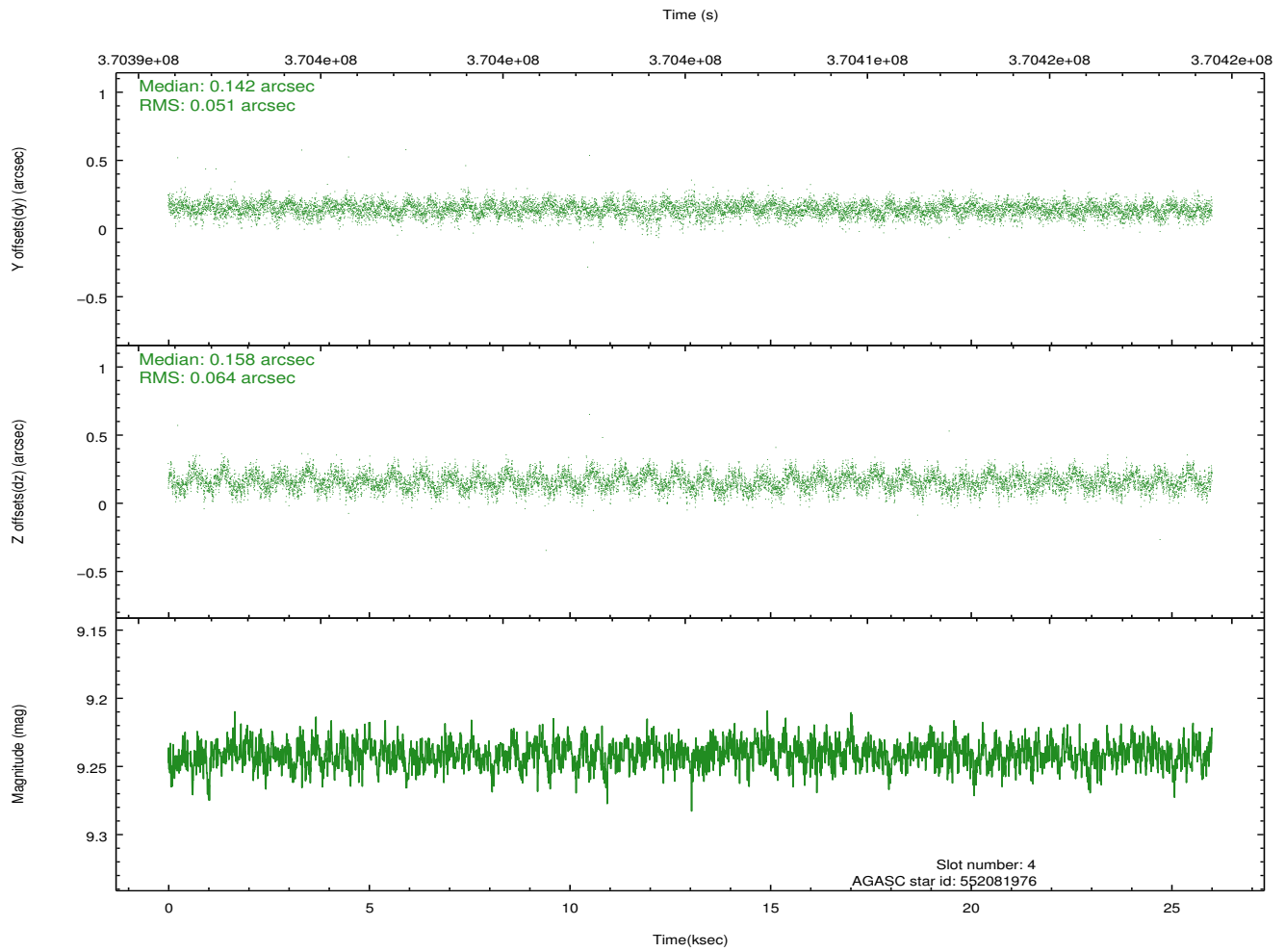
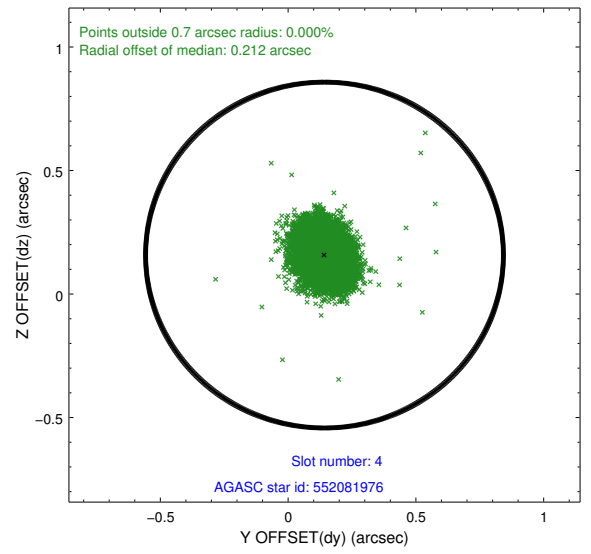
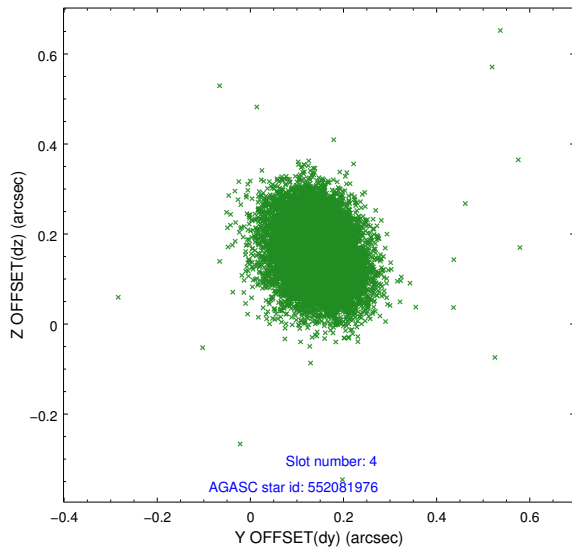
slot	status	id	mag	n_pts	med_dy	med_dz	dr1	dr2	ra	dec	mean_y	mean_z
0	FID	ACIS-I-1	6.97	6345	0.079	-0.034	0.010	0.020	0.000000	0.000000	927.34	-961.59
1	FID	ACIS-I-5	6.97	6345	-0.223	0.081	0.010	0.016	0.000000	0.000000	-1821.05	935.88
2	FID	ACIS-I-6	6.97	6345	0.051	0.023	0.011	0.019	0.000000	0.000000	392.69	1580.50
3	GUIDE	552075520	8.90	12621	0.015	-0.237	0.077	0.122	269.430358	66.310622	735.12	170.78
4	GUIDE	552081976	9.24	12677	0.142	0.158	0.086	0.140	269.000724	66.928627	-1510.60	-360.66
5	GUIDE	552084280	7.65	12683	-0.030	0.082	0.063	0.104	268.233478	66.419076	270.86	-1538.13
6	GUIDE	552206400	8.62	12685	-0.058	0.110	0.074	0.120	270.193803	65.897301	2252.62	1243.46
7	GUIDE	552213664	8.82	12549	-0.070	-0.118	0.082	0.130	270.812461	66.341359	668.87	2170.62

2.4 Star Slots

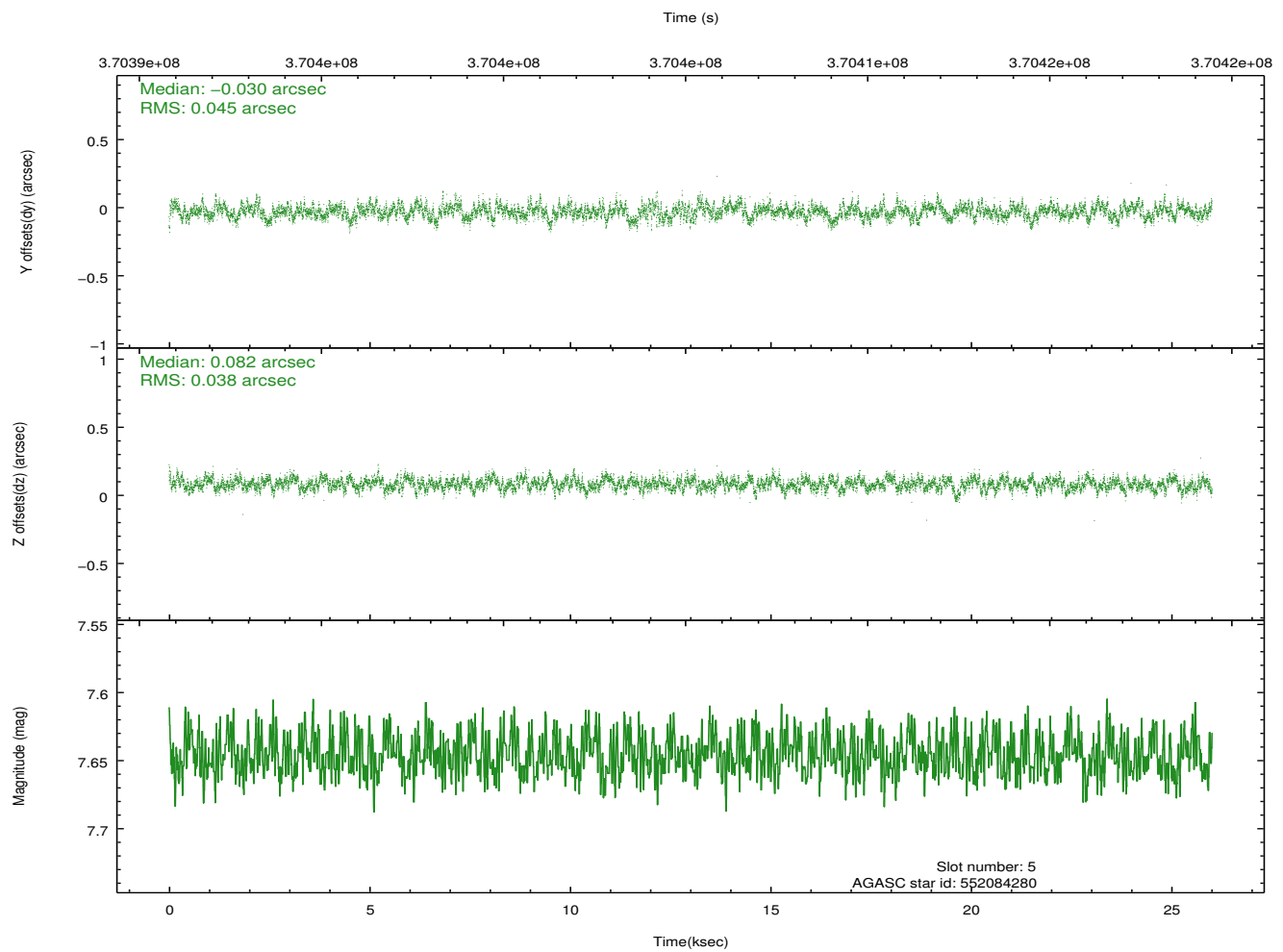
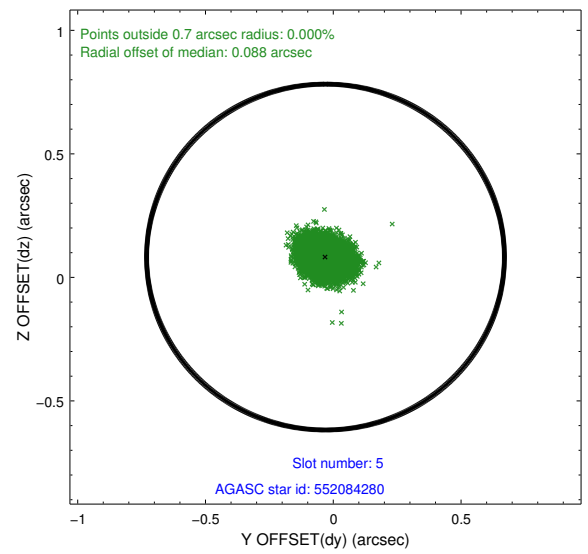
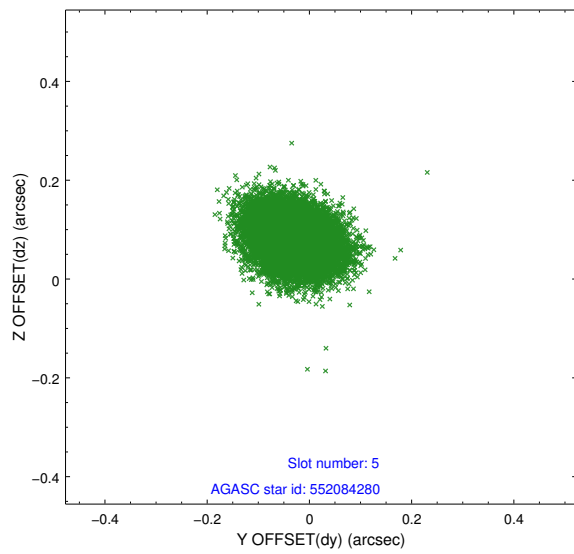
2.4.1 Slot 3



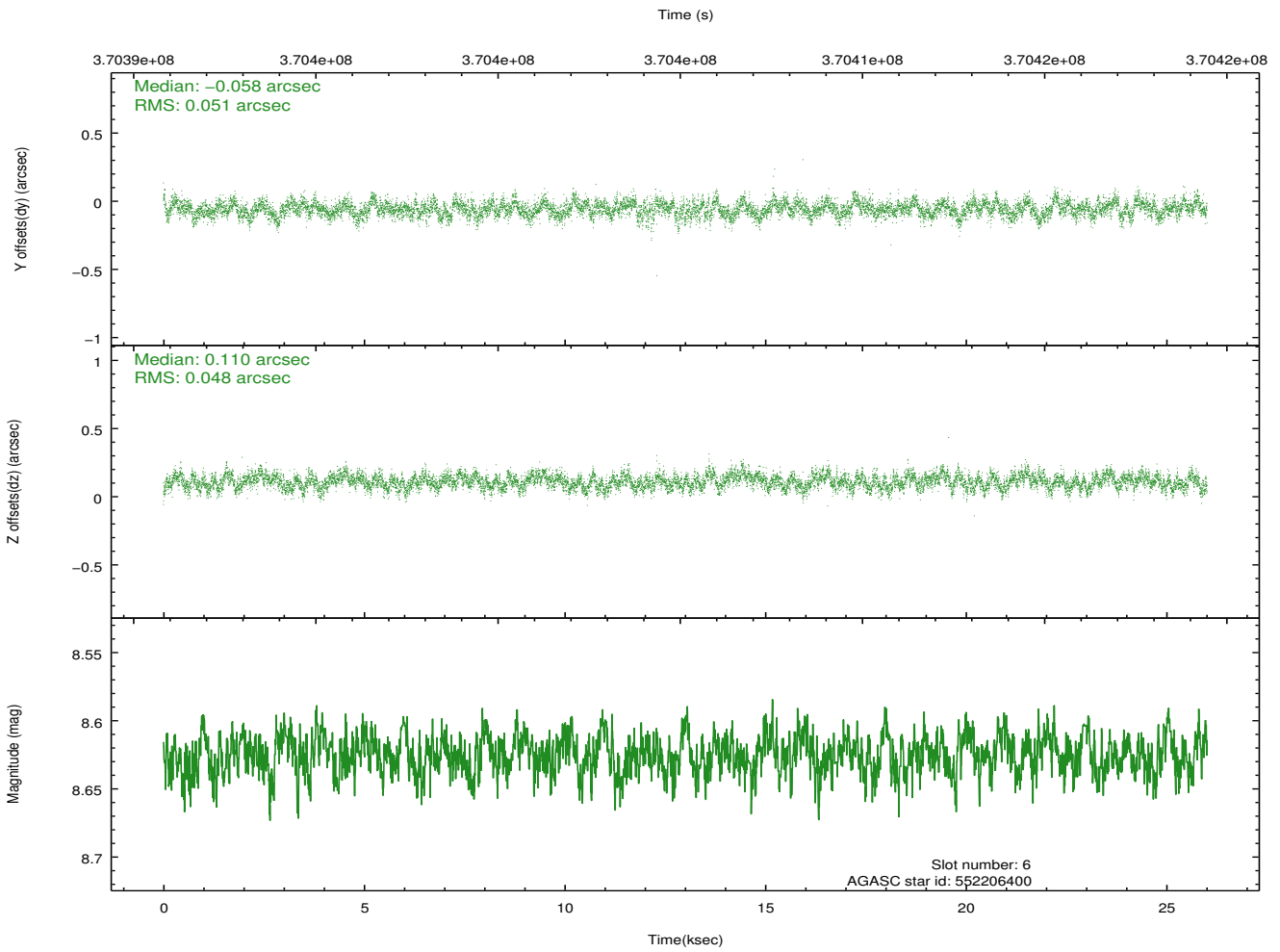
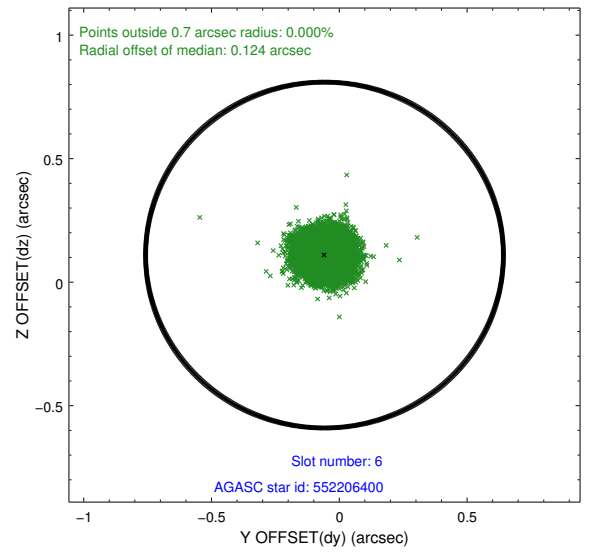
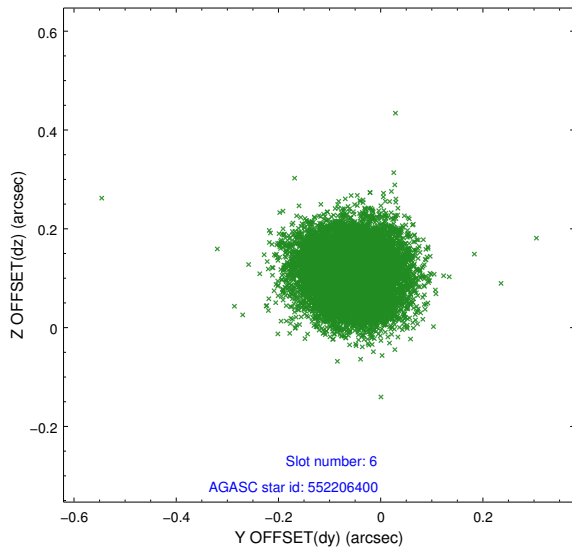
2.4.2 Slot 4



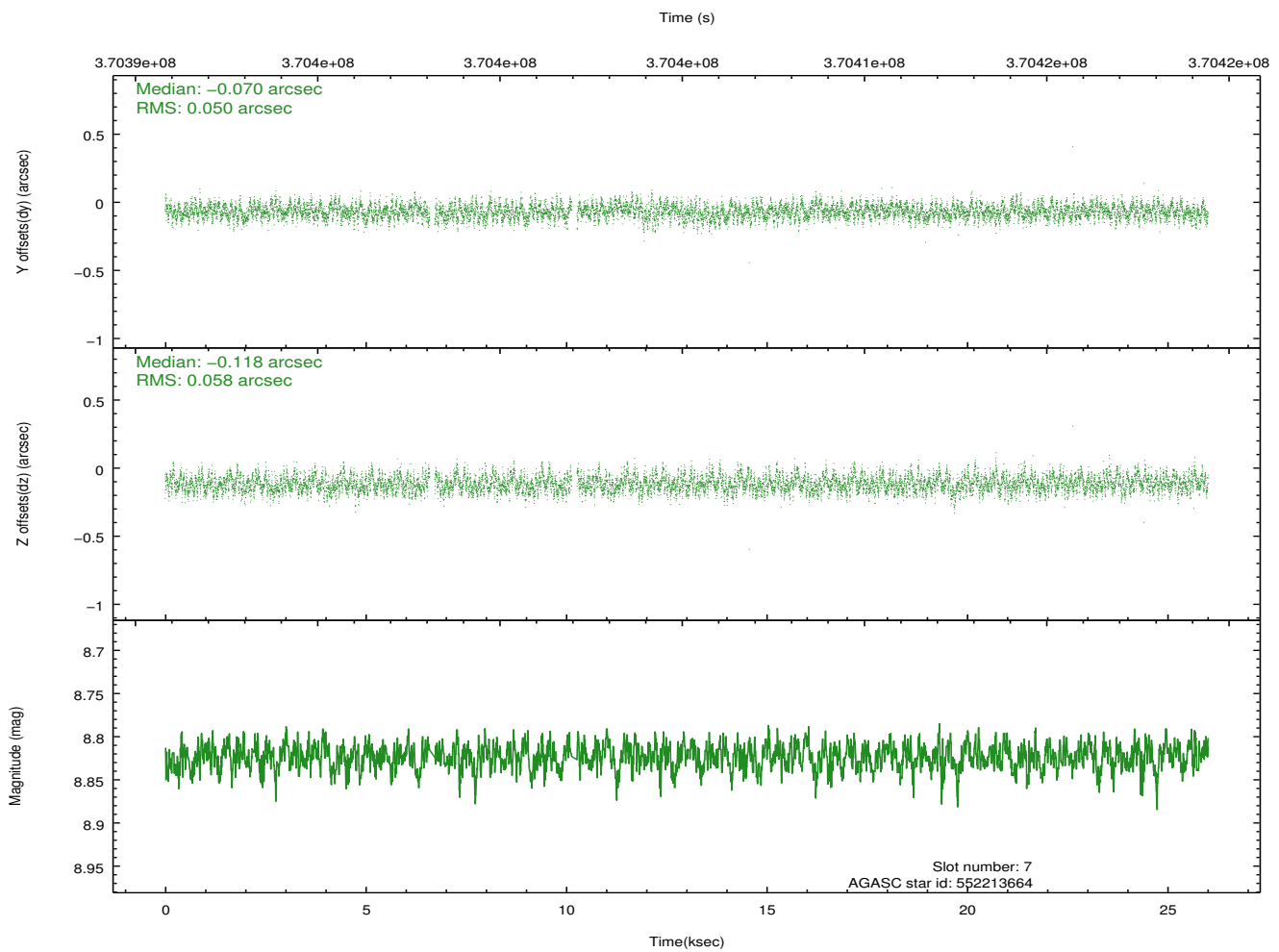
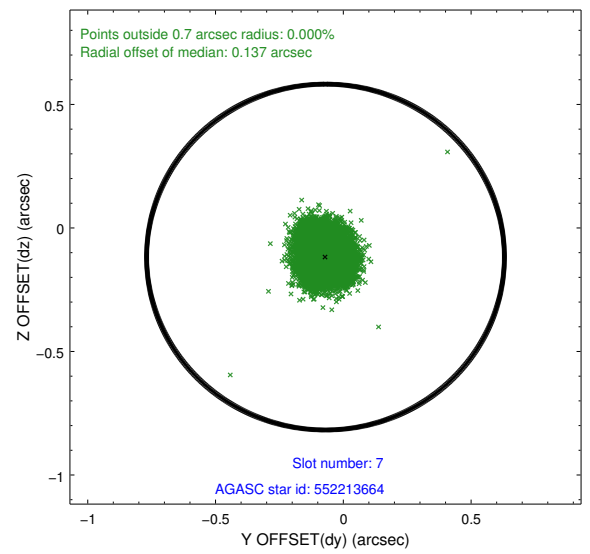
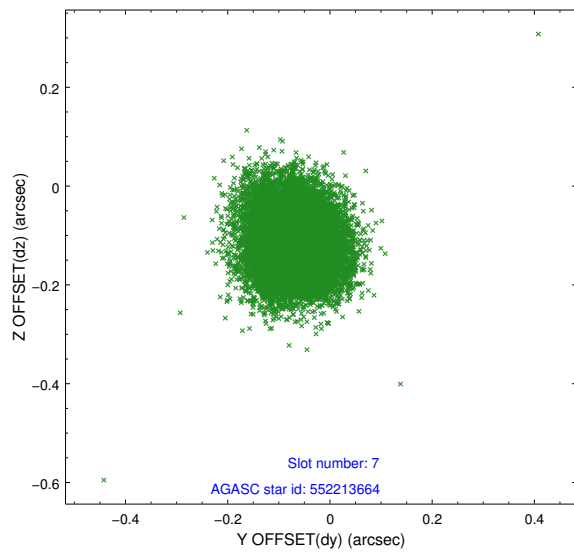
2.4.3 Slot 5



2.4.4 Slot 6

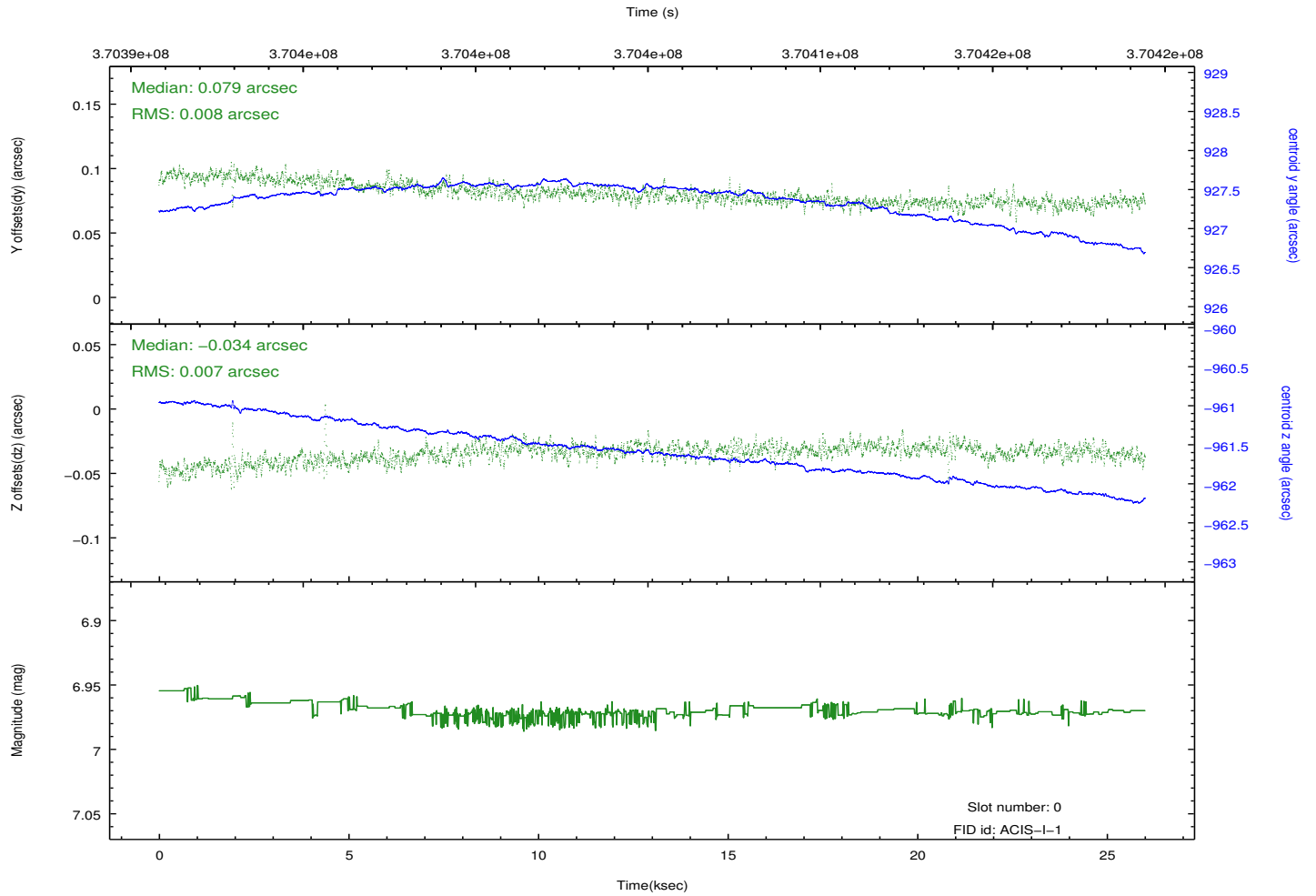
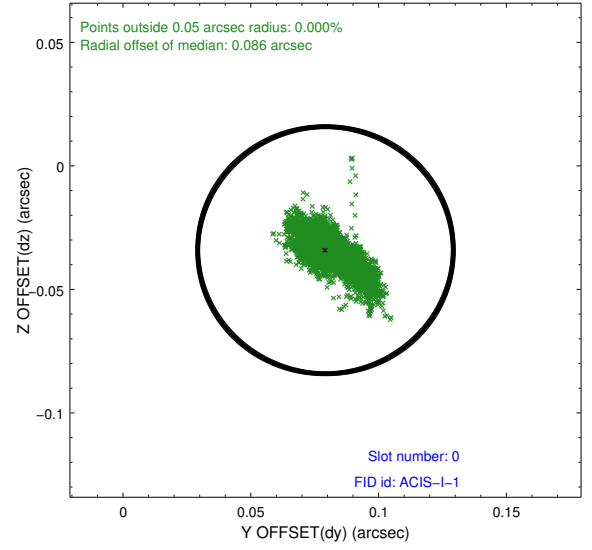
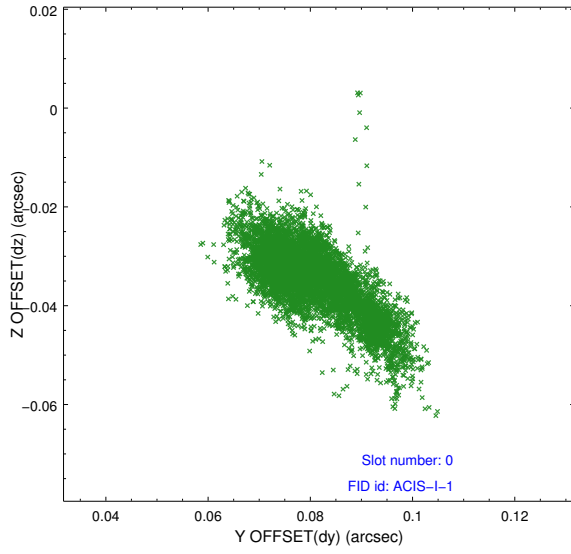


2.4.5 Slot 7

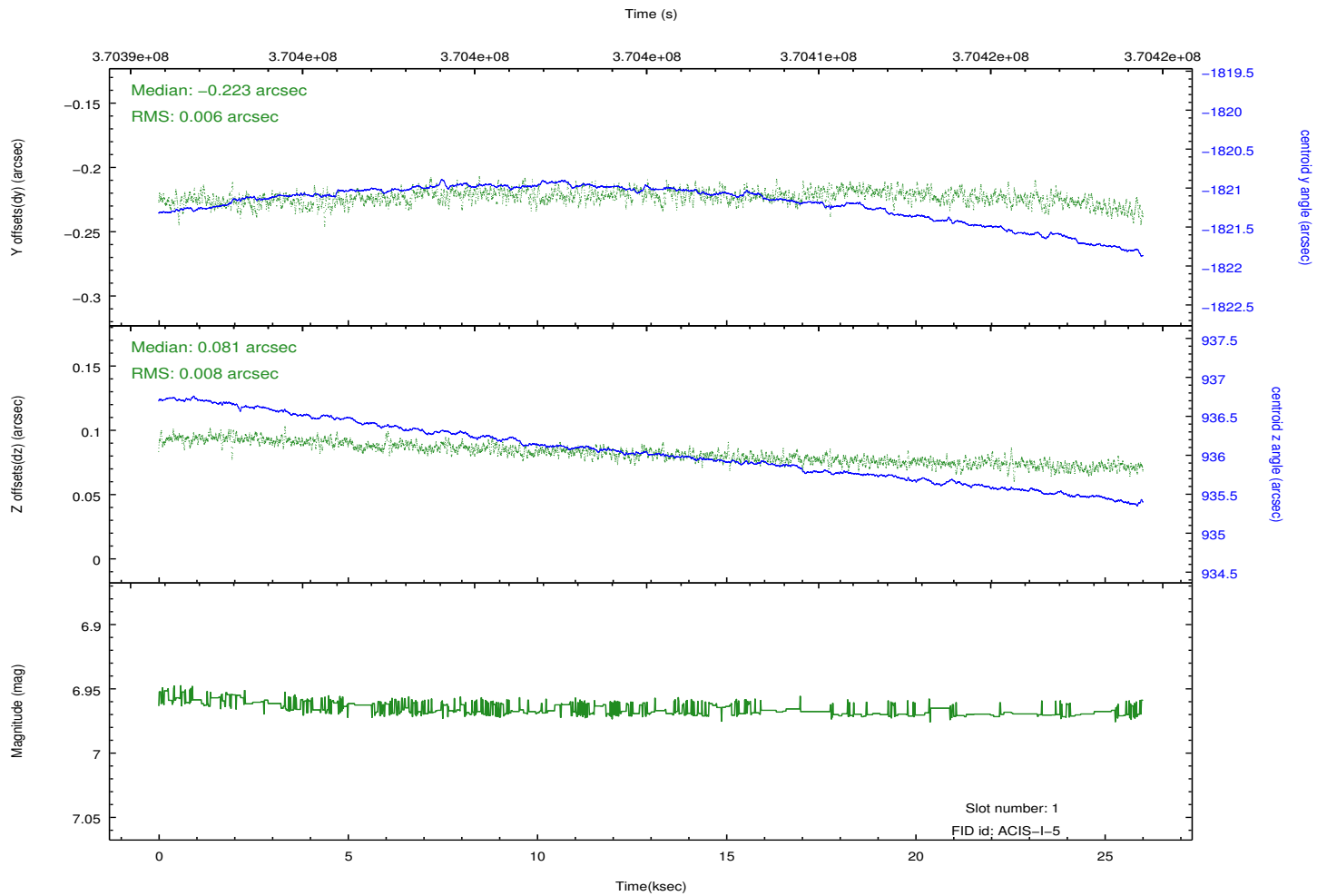
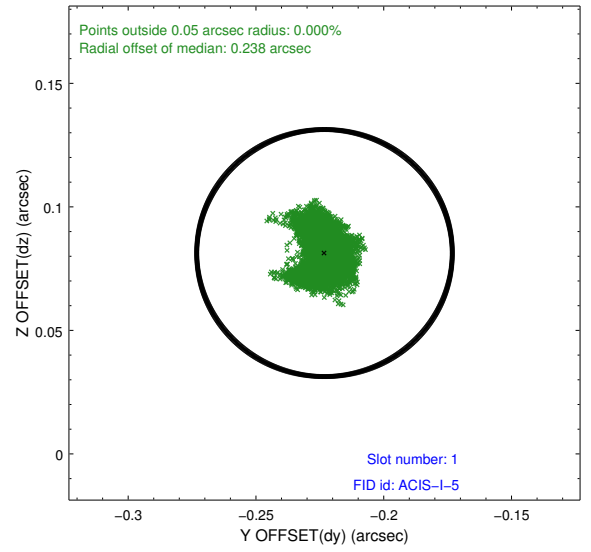
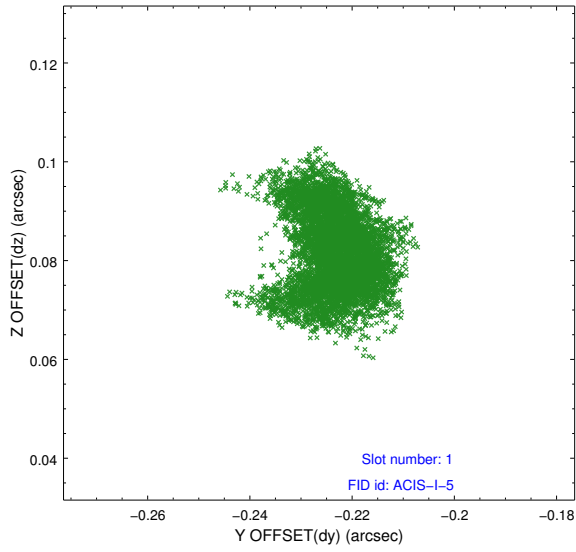


2.5 FID Slots

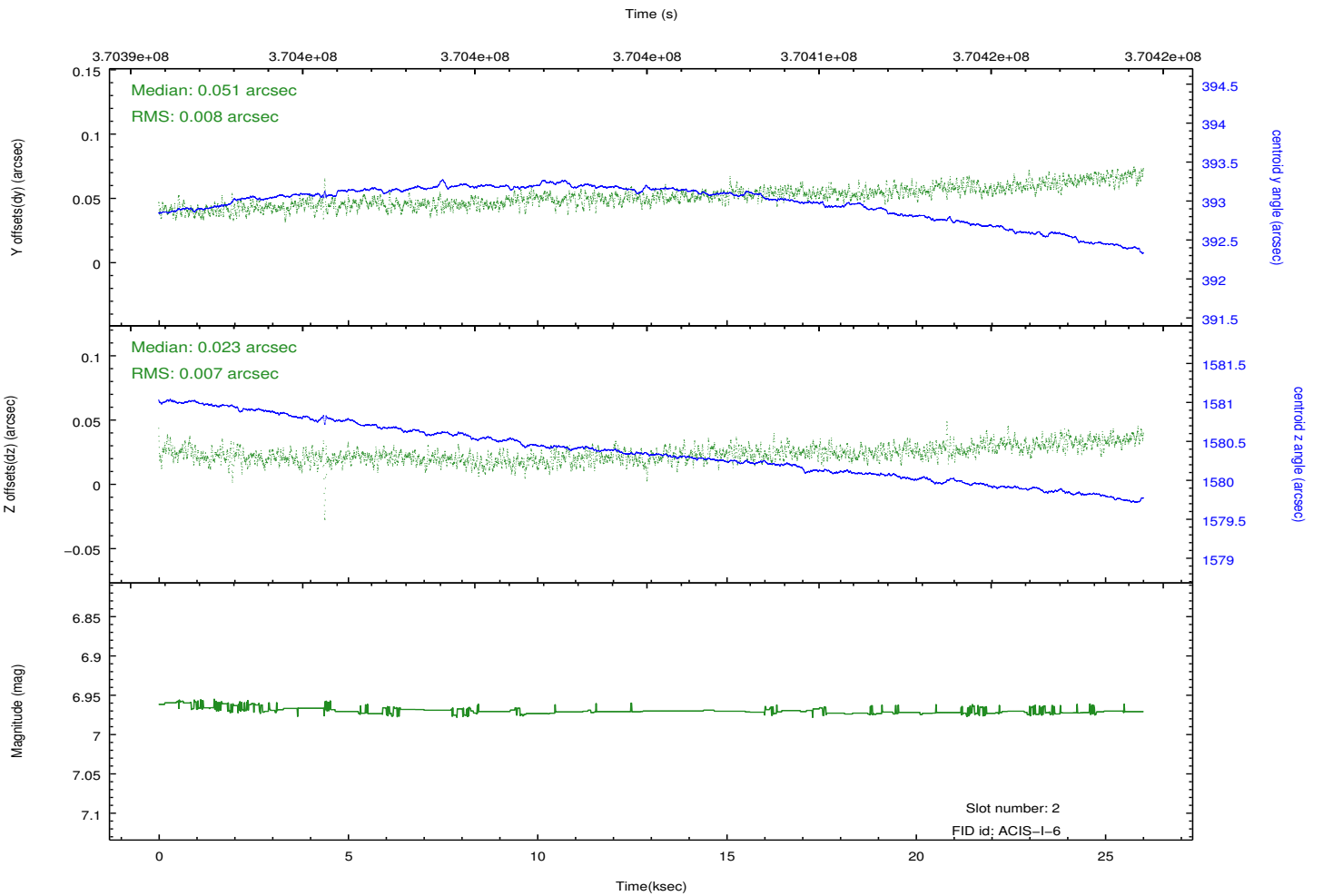
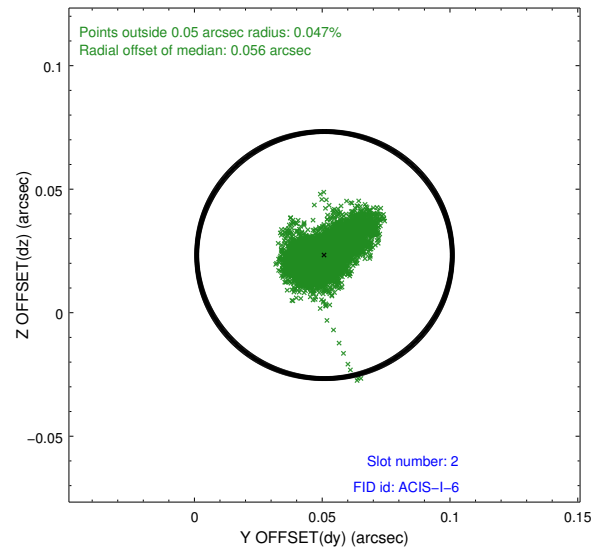
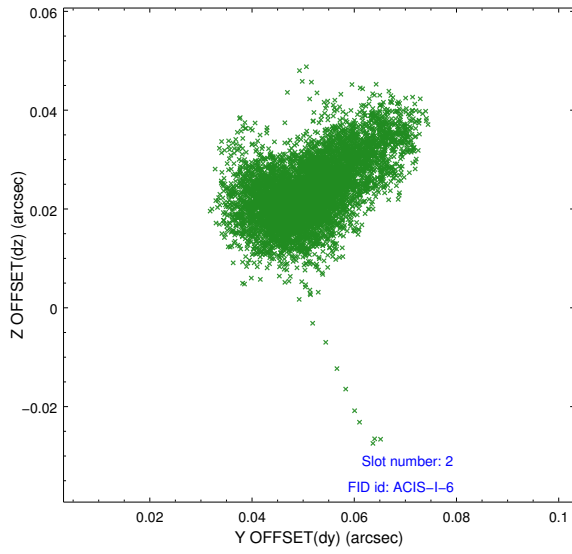
2.5.1 Slot 0



2.5.2 Slot 1



2.5.3 Slot 2



A Summary

A.1 Status

V&V Scientist	Beth Sundheim
V&V Date (YYYY-MM-DD)	2012.06.18
V&V Edition	1
V&V Disposition and Status	OK
V&V Charge Time	25.032377440989

A.2 Comments

Joint proposal with NRAO.