

V&V Reference Report

L2 ASCDS Version : 8.4.5

Observation 12039 - L2 Version 2
Chandra X-Ray Center

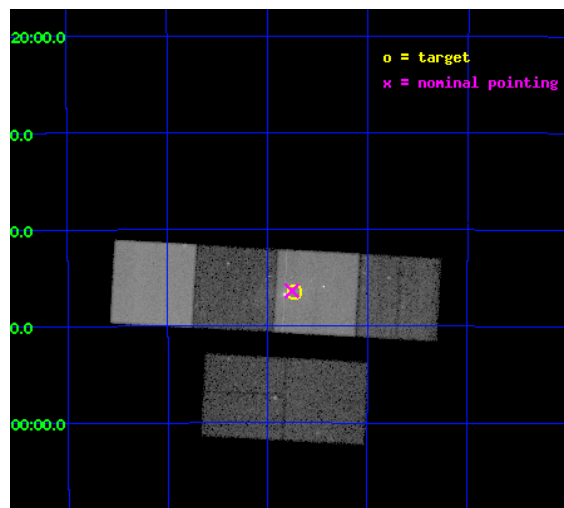
L2 Processing Date : Jun 17 2012

Contents

1	Front	2
2	OBI	3
2.1	OBI	3
2.1.1	Images	3
2.1.2	Bias	3
2.1.3	Parameters	4
2.1.4	Events	4
2.2	Compared Parameters	5
2.3	Aspect	6
2.4	Star Slots	9
2.4.1	Slot 3	9
2.4.2	Slot 4	10
2.4.3	Slot 5	11
2.4.4	Slot 6	12
2.4.5	Slot 7	13
2.5	FID Slots	14
2.5.1	Slot 0	14
2.5.2	Slot 1	15
2.5.3	Slot 2	16
A	Summary	17
A.1	Status	17
A.2	Comments	17

1 Front

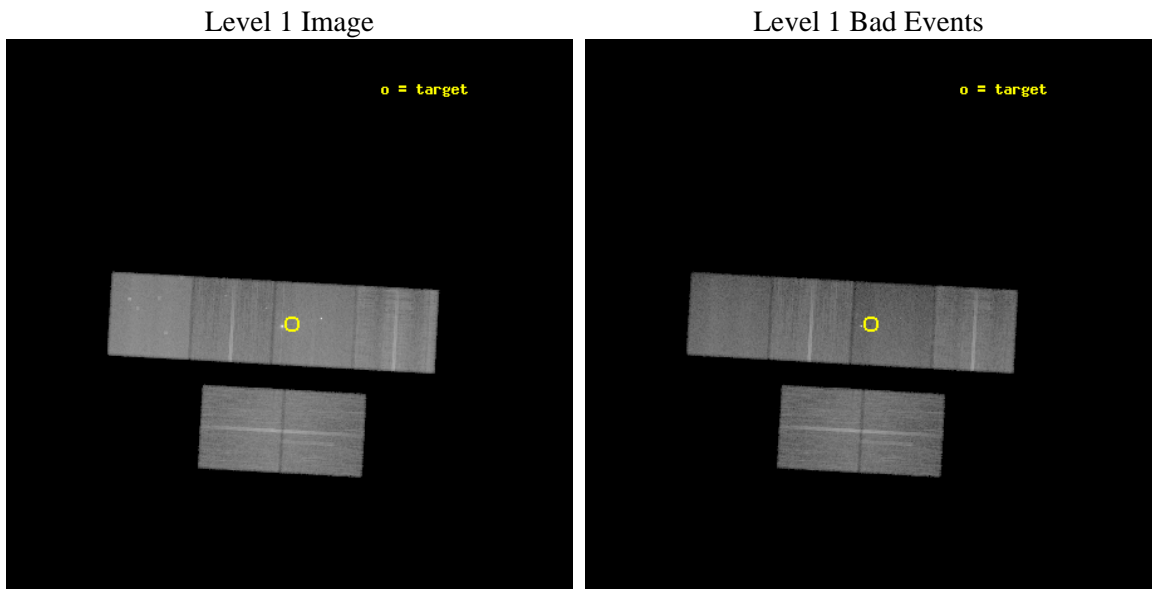
seq_num	702172	Sequence number
obs_id	12039	Observation id
title	Variability and particle acceleration in the jet of Pictor A	Propo
observer	Dr Martin Hardcastle	Principal investigator
object	Pictor A Jet	Source name
dtcycle	0	
cycle	P	events from which exps? Prim/Second/Both
ra_targ	79.933333	Observer's specified target RA [deg]
dec_targ	-45.775556	Observer's specified target Dec [deg]
ra_nom	79.939057373738	Nominal RA [deg]
dec_nom	-45.772802284976	Nominal Dec [deg]
roll_nom	3.160722884839	Nominal Roll [deg]
revision	2	Processing version of data
ontime	24041.599910498	Sum of GTIs [s]
livetime	23737.170696317	Livetime [s]
ontime2	24041.599910498	Sum of GTIs [s]
ontime3	24041.523983955	Sum of GTIs [s]
ontime5	24041.599910498	Sum of GTIs [s]
ontime6	24041.565023959	Sum of GTIs [s]
ontime7	24041.599910498	Sum of GTIs [s]
ontime8	24041.482943952	Sum of GTIs [s]
l2events	342338	Number of level 2 events



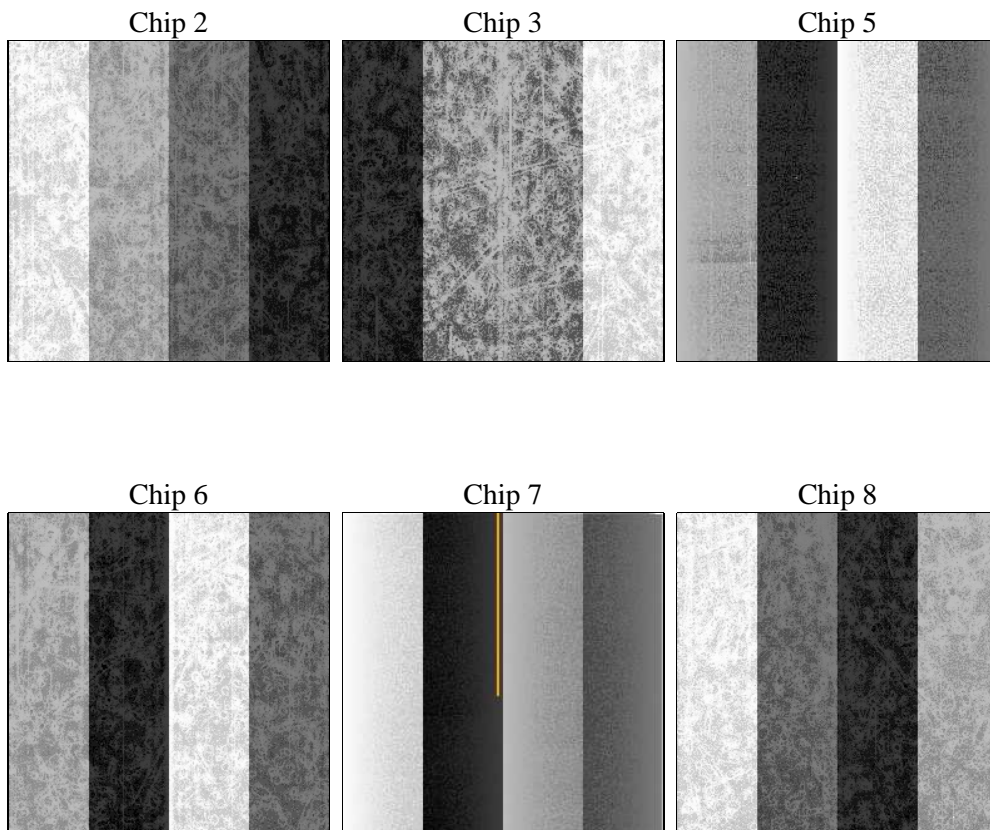
2 OBI

2.1 OBI

2.1.1 Images



2.1.2 Bias



2.1.3 Parameters

obi_num	0	Obi number	sched_exp_time	24000.000000	[s] Scheduled observation exposure time
ascdsver	8.4.5	Processing system revision	ontime	24041.599910498	Sum of GTIs [s]
caldbver	4.4.10	 	ontime2	24041.599910498	Sum of GTIs [s]
date	2012-06-17T17:42:37	Date and time of file creation	ontime3	24041.523983955	Sum of GTIs [s]
revision	2	Processing version of data	ontime5	24041.599910498	Sum of GTIs [s]
			ontime6	24041.565023959	Sum of GTIs [s]
			ontime7	24041.599910498	Sum of GTIs [s]
			ontime8	24041.482943952	Sum of GTIs [s]
			l1events	1462513	Number of level 1 events

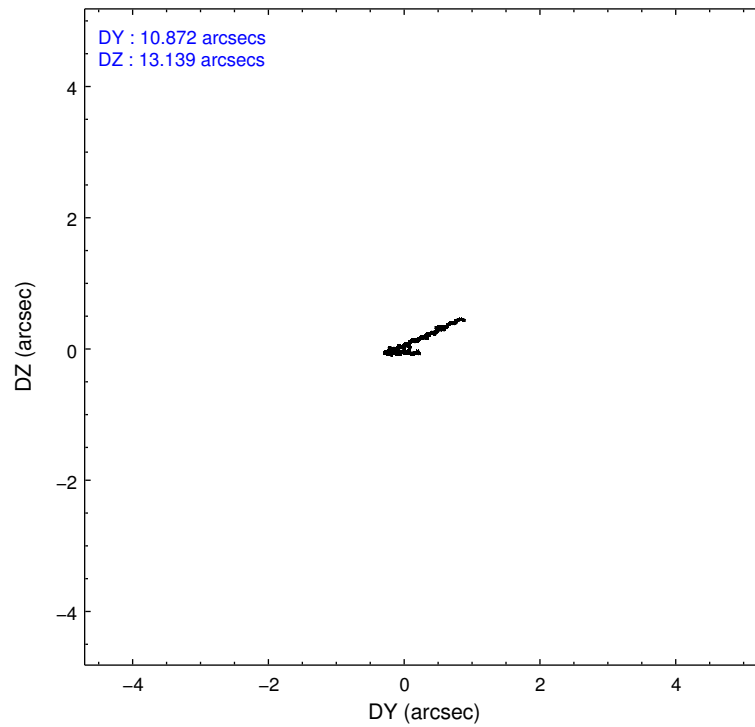
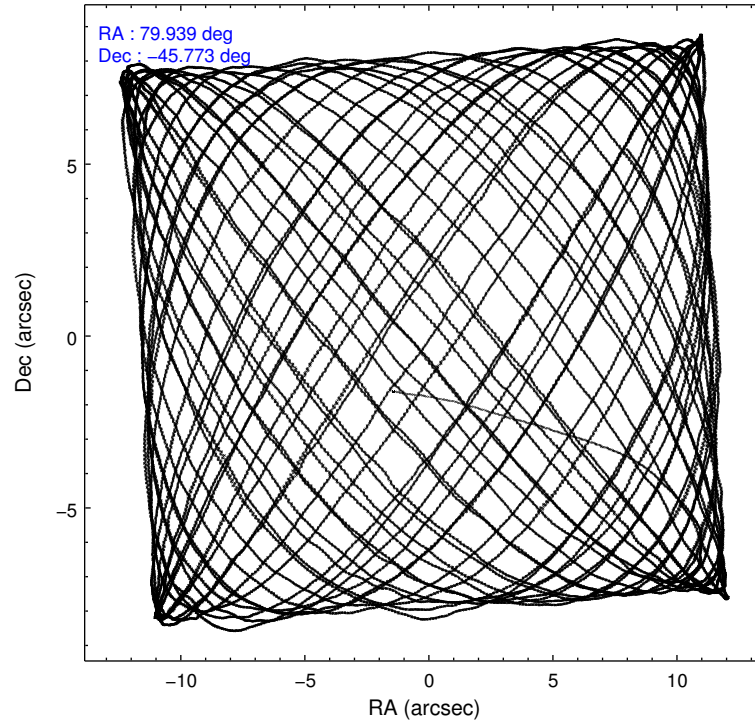
2.1.4 Events

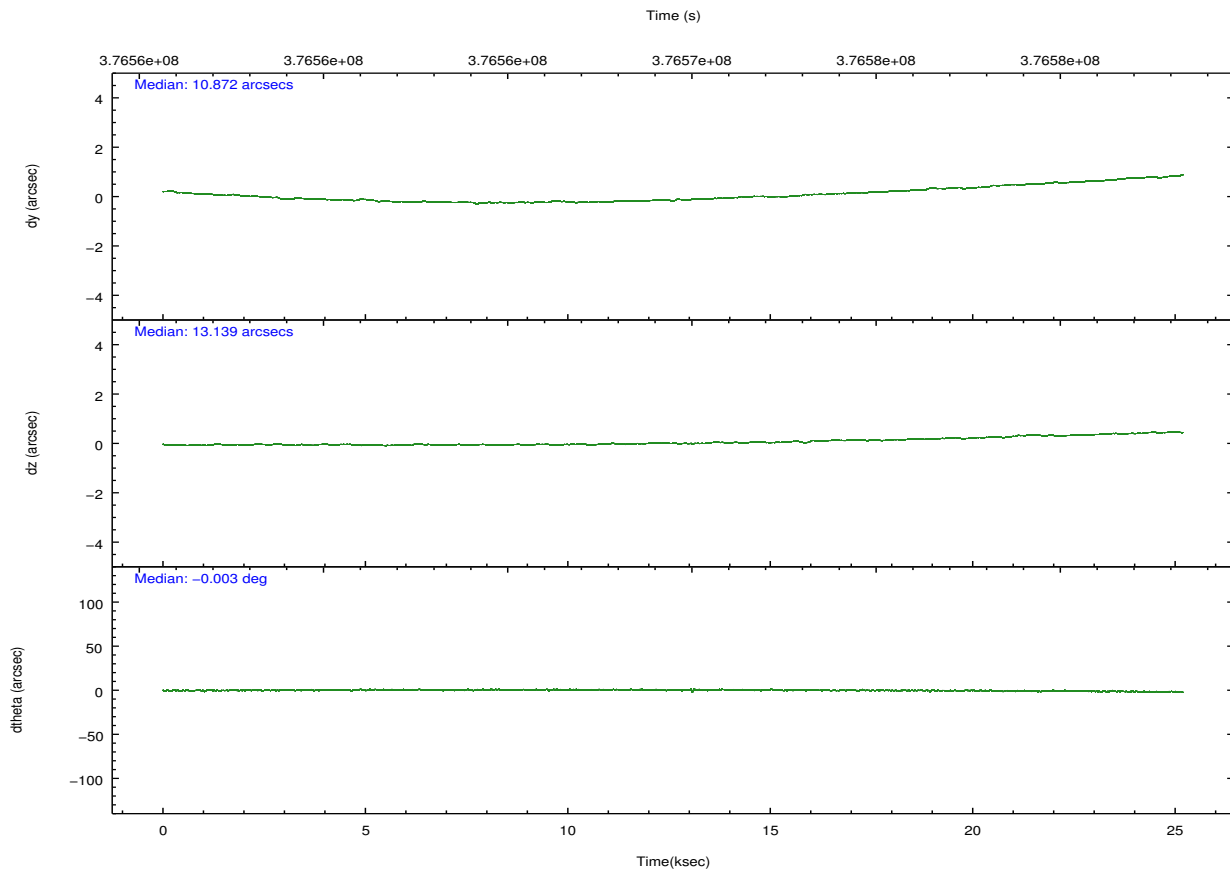
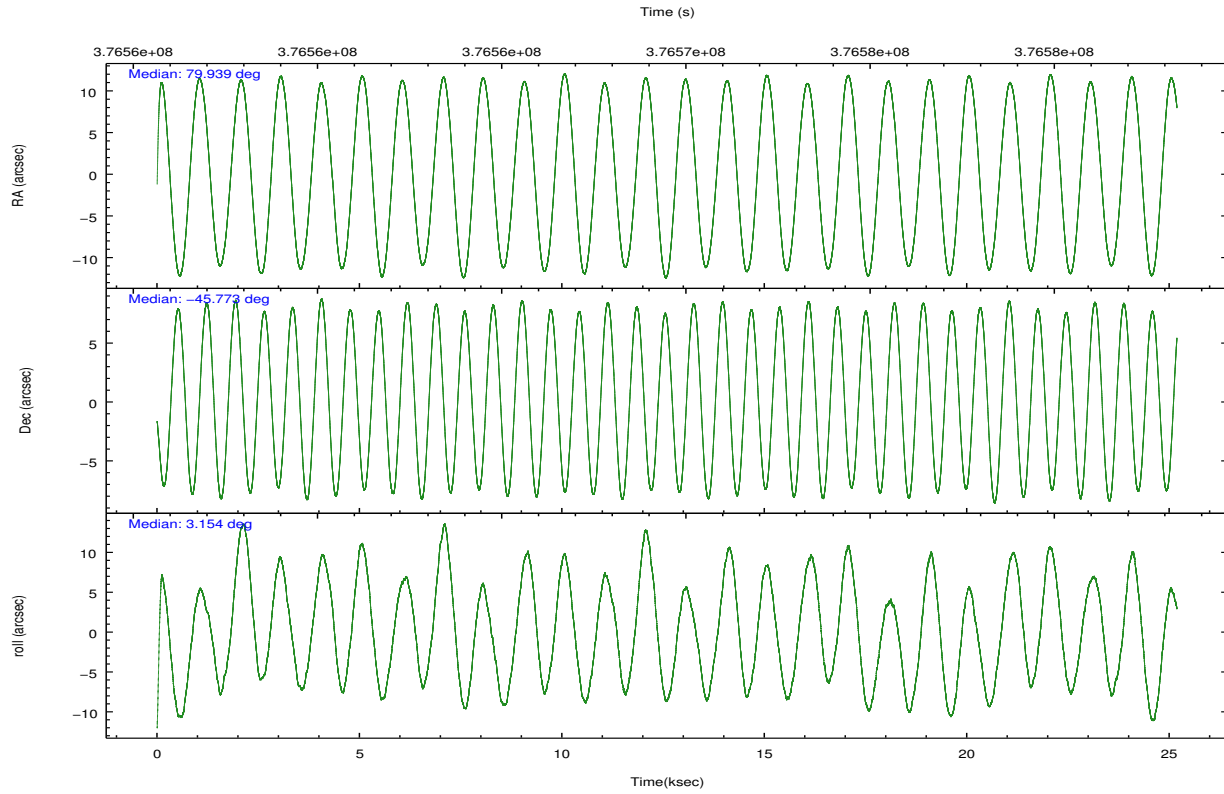
	ccd 2	ccd 3	ccd 5	ccd 6	ccd 7	ccd 8		ccd 2	ccd 3	ccd 5	ccd 6	ccd 7	ccd 8
level 1 events	219704	205910	296985	211713	259799	268402	grade 0 events	7790	6985	11644	8950	13842	20639
rejected events	198150	185942	150464	188150	135050	199250		3%	3%	3%	4%	5%	7%
rejected %	90%	90%	50%	88%	51%	74%	grade 1 events	134	120	616	96	499	242
								0%	0%	0%	0%	0%	0%
							grade 2 events	5296	4500	44660	5071	26550	15913
								2%	2%	15%	2%	10%	5%
							grade 3 events	2143	2214	6062	2393	11410	7425
								0%	1%	2%	1%	4%	2%
							grade 4 events	2262	2166	5600	2295	11338	6893
								1%	1%	1%	1%	4%	2%
							grade 5 events	7818	8741	23169	8736	26150	12686
								3%	4%	7%	4%	10%	4%
							grade 6 events	4066	4107	78568	4859	61626	18284
								1%	1%	26%	2%	23%	6%
							grade 7 events	190195	177077	126666	179313	108384	186320
								86%	85%	42%	84%	41%	69%

2.2 Compared Parameters

Parameter	Planned	Actual	Parameter	Planned	Actual
Instrument	ACIS	ACIS	Obspar format version number	7	7
Detector	ACIS-235678	ACIS-235678	Obspar file type	PREDICTED	ACTUAL
Grating	NONE	NONE	Obspar update status	NONE	UPDATED
Data mode	FAINT	FAINT	CCD I0 on	N	N
Observation mode	POINTING	POINTING	CCD I1 on	N	N
[deg] Pointing RA	79.906512	79.93905737373836	CCD I2 on	O2	Y
[deg] Pointing Dec	-45.788046	-45.77280228497595	CCD I3 on	O3	Y
[deg] Pointing Roll	2.980772	3.160722884839028	CCD S0 on	N	N
[mm] SIM focus pos	-0.684267	-0.6828225247311905	CCD S1 on	O1	Y
[mm] SIM defocus	0	0.001444936568705701	CCD S2 on	Y	Y
[mm] SIM translation stage pos	-190.132523	-190.1400660498719	CCD S3 on	Y	Y
[mm] SIM translation stage offset	0	0.00754346686406393	CCD S4 on	O4	Y
[s] Observation start time (MET)	376557909.184000	376556189.69134	CCD S5 on	N	N
Observation start date	2009-12-07T07:24:03	2009-12-07T06:56:29	Number of optional ACIS chips dropped	0	0
[s] Observation end time (MET)	376581909.184000	376582663.39267	On-chip summing requested	N	N
Observation end date	2009-12-07T14:04:03	2009-12-07T14:17:43	Subarray requested	NONE	NONE
Read mode	TIMED	TIMED	Alternating exposures requested	N	N
			[s] Primary exposure time	0.000000	3.2

2.3 Aspect



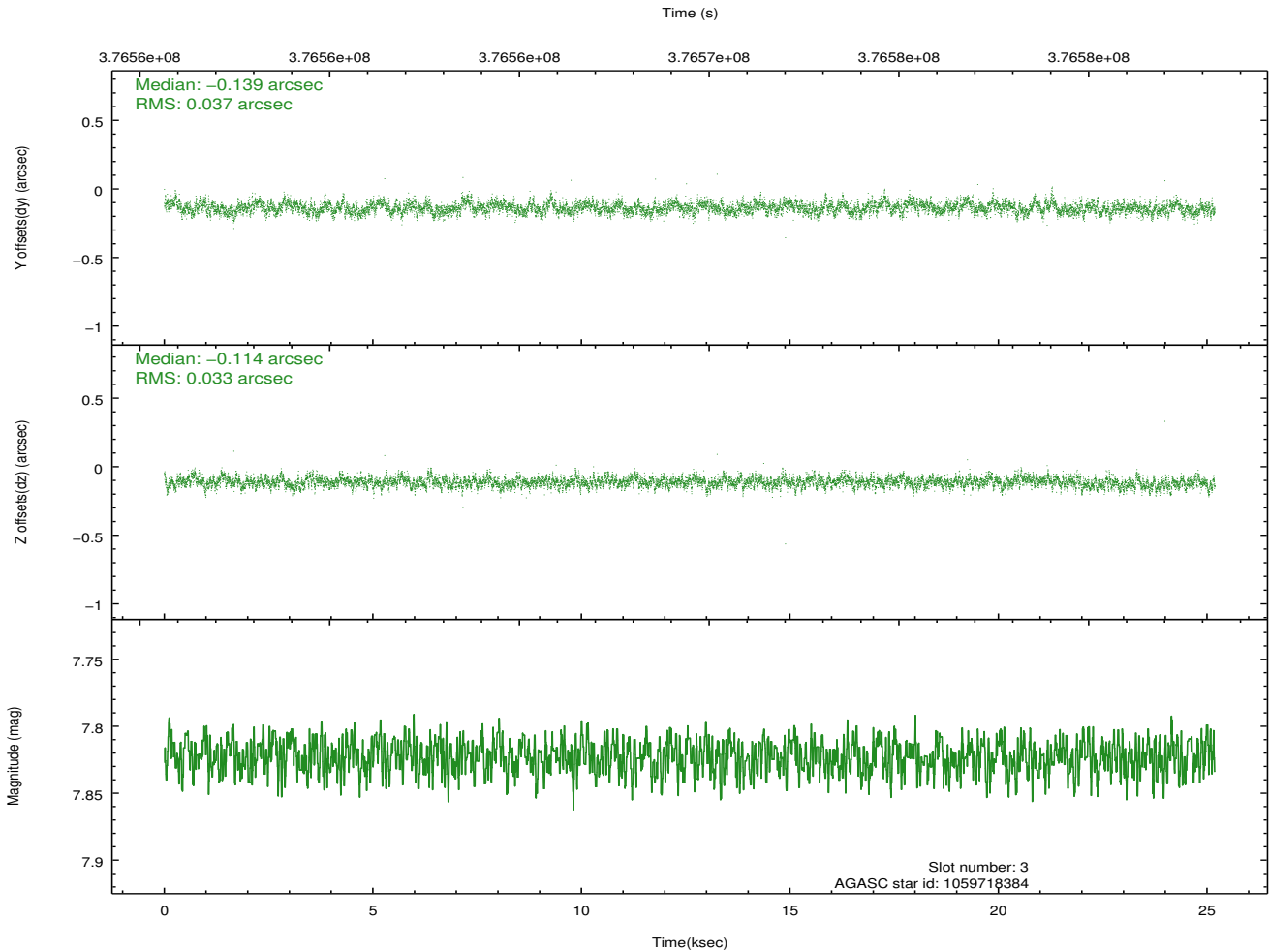
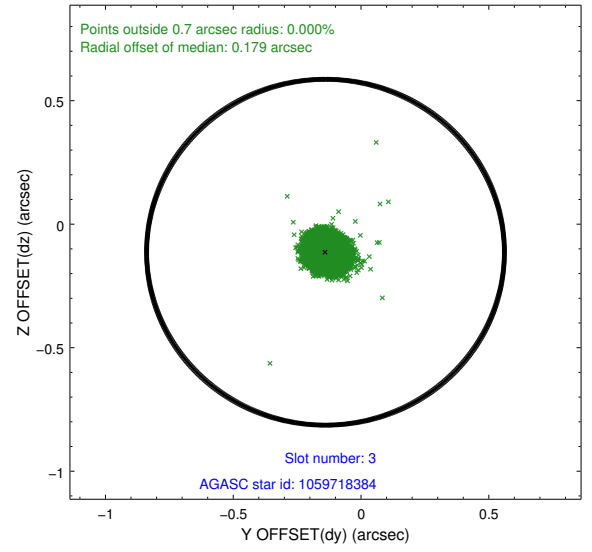
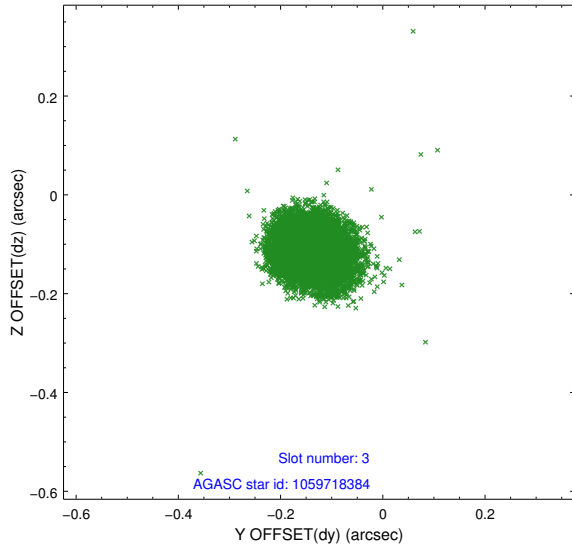


Slot Statistics

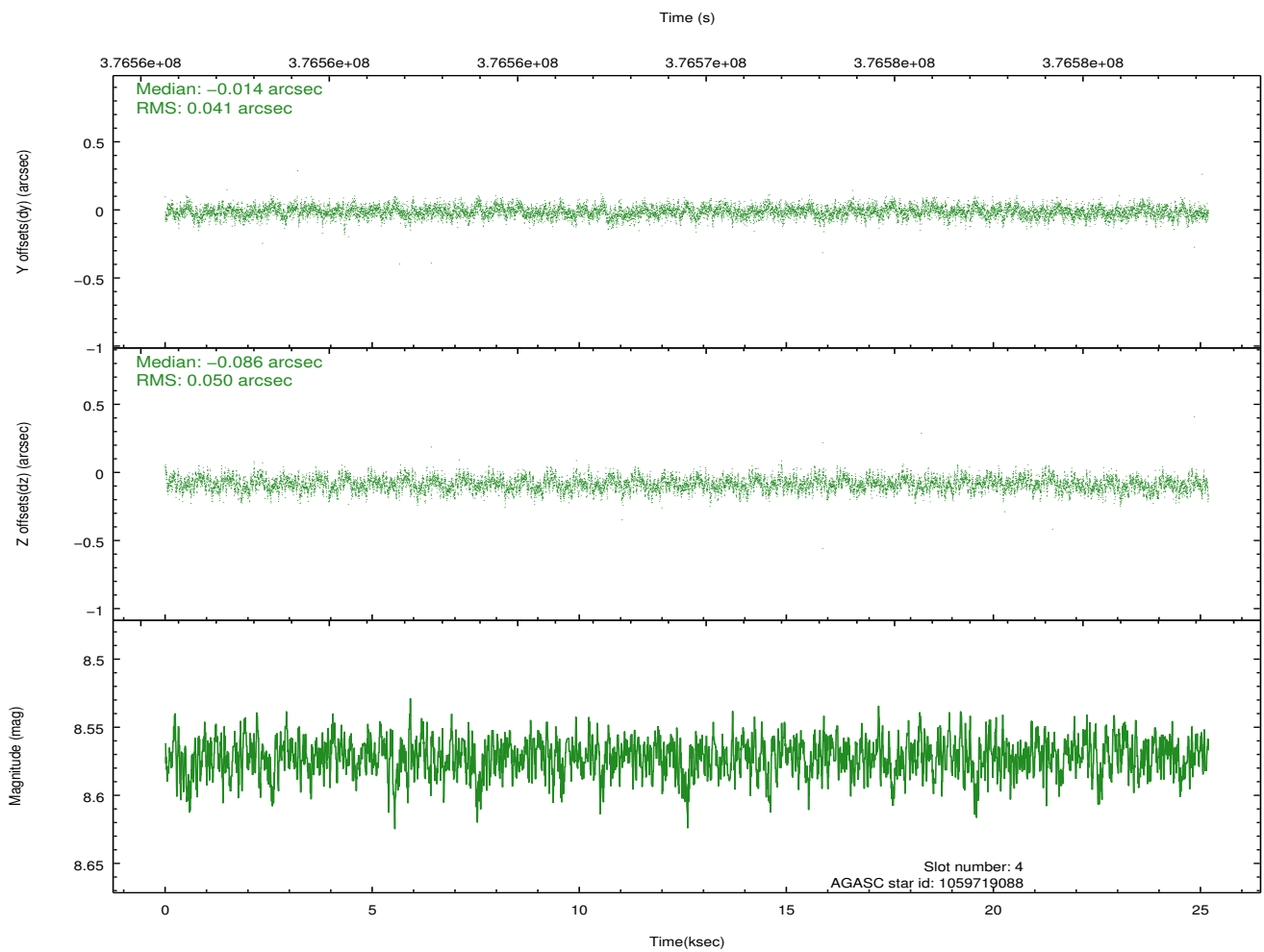
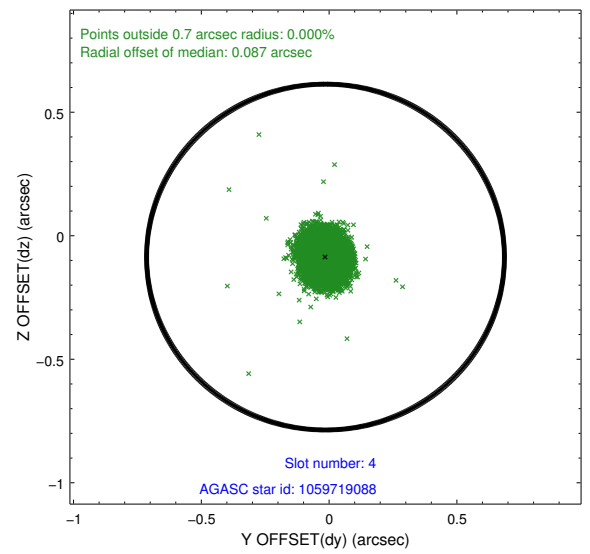
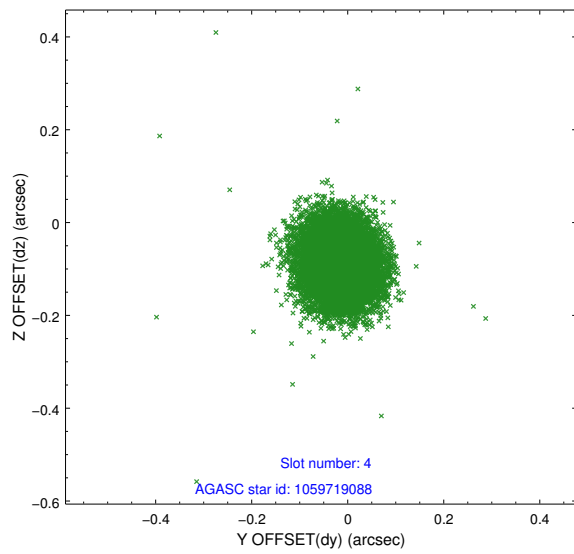
slot	status	id	mag	n_pts	med_dy	med_dz	dr1	dr2	ra	dec	mean_y	mean_z
0	FID	ACIS-S-2	6.90	6144	-0.039	-0.048	0.008	0.014	0.000000	0.000000	-763.88	-1734.59
1	FID	ACIS-S-4	6.99	6144	0.150	0.032	0.007	0.025	0.000000	0.000000	2149.55	173.83
2	FID	ACIS-S-5	7.02	6144	-0.142	0.025	0.008	0.018	0.000000	0.000000	-1816.65	167.66
3	GUIDE	1059718384	7.82	12285	-0.139	-0.114	0.052	0.086	80.663676	-45.411103	1981.17	1247.16
4	GUIDE	1059719088	8.57	12265	-0.014	-0.086	0.067	0.110	80.358941	-45.341185	1226.96	1544.45
5	GUIDE	1059720912	8.90	12247	0.085	-0.068	0.094	0.150	80.344072	-46.279067	995.86	-1824.47
6	GUIDE	1059720952	9.28	12236	0.123	0.104	0.099	0.167	80.539931	-46.279907	1482.21	-1856.17
7	GUIDE	1059722304	7.52	12287	-0.056	0.164	0.063	0.102	79.157586	-45.913736	-1896.84	-363.06

2.4 Star Slots

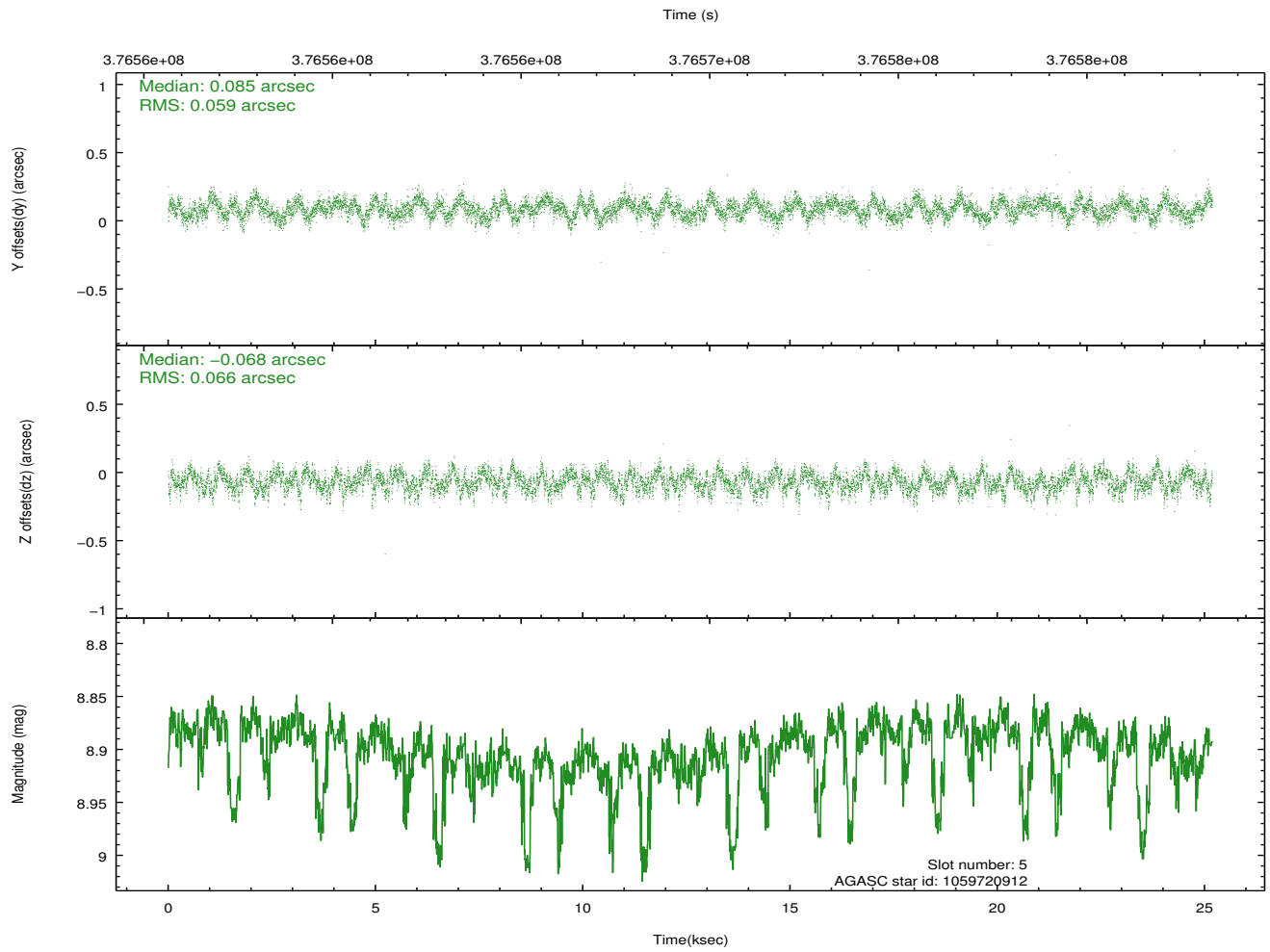
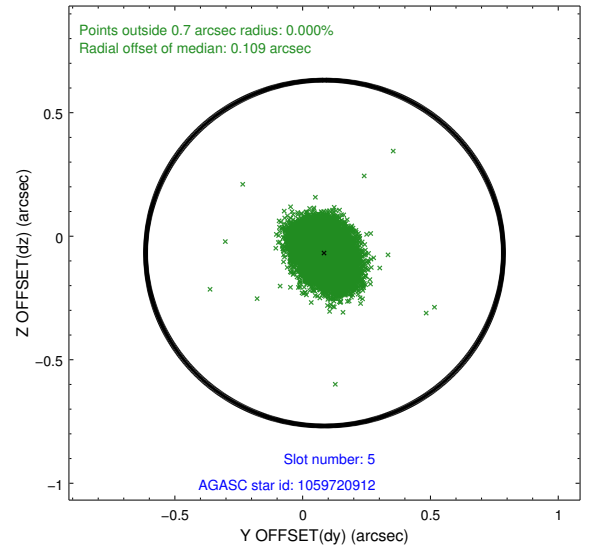
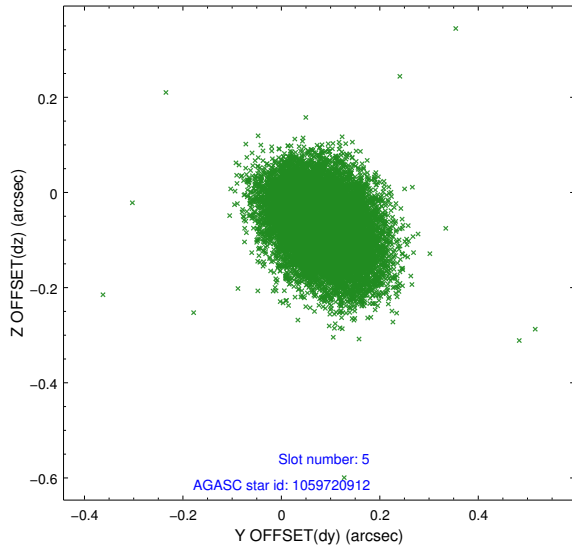
2.4.1 Slot 3



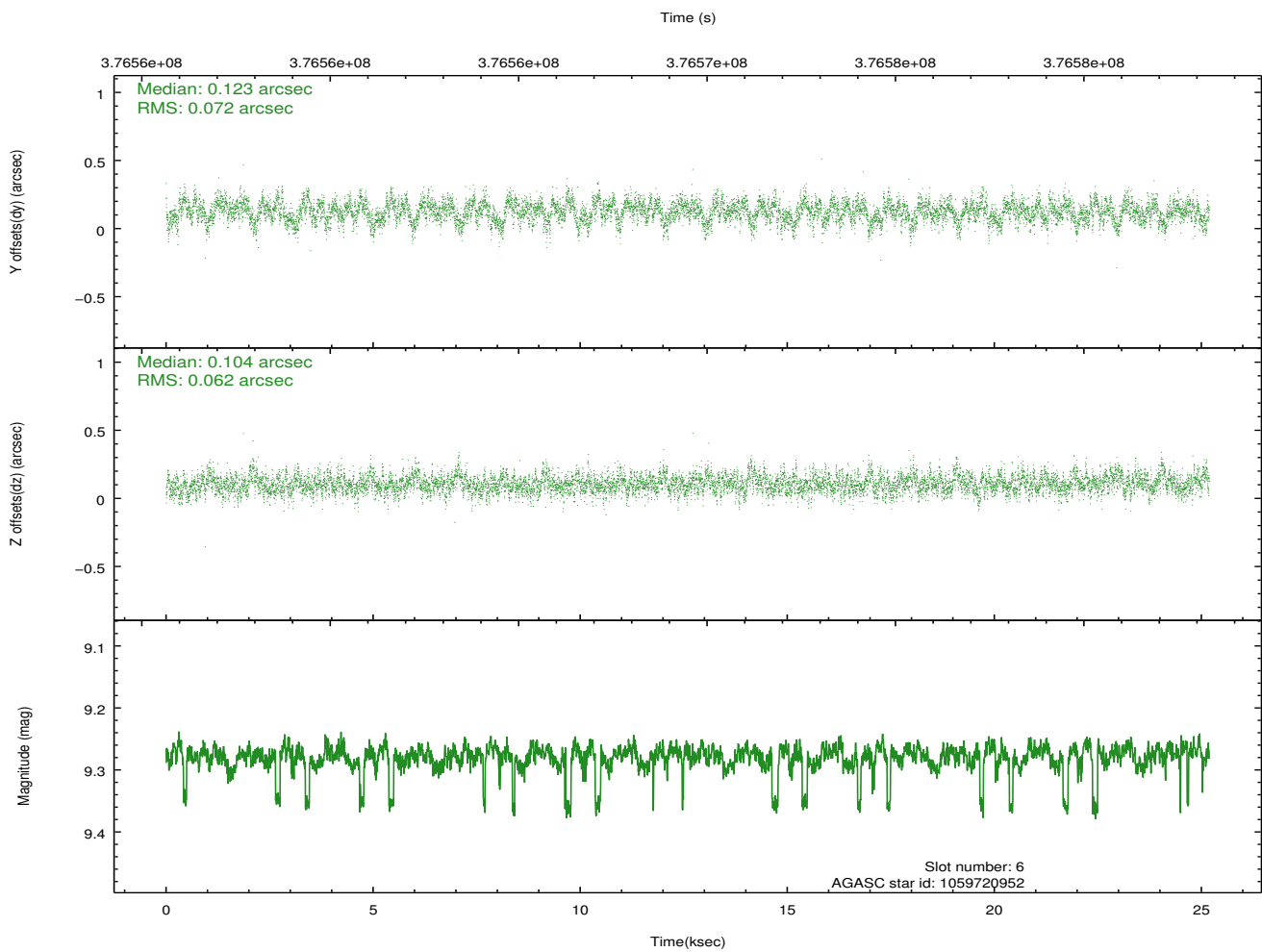
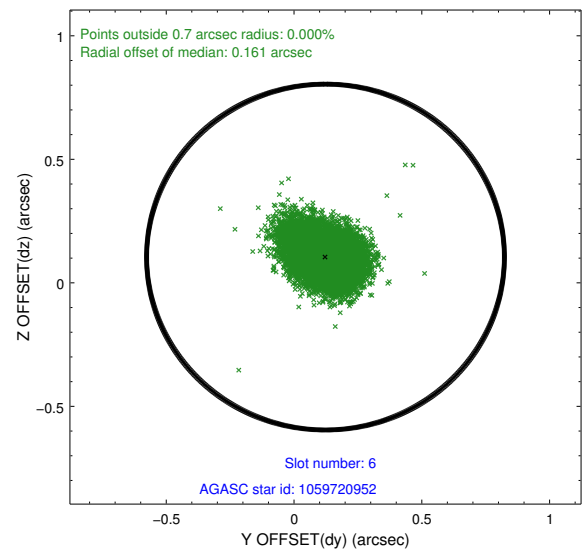
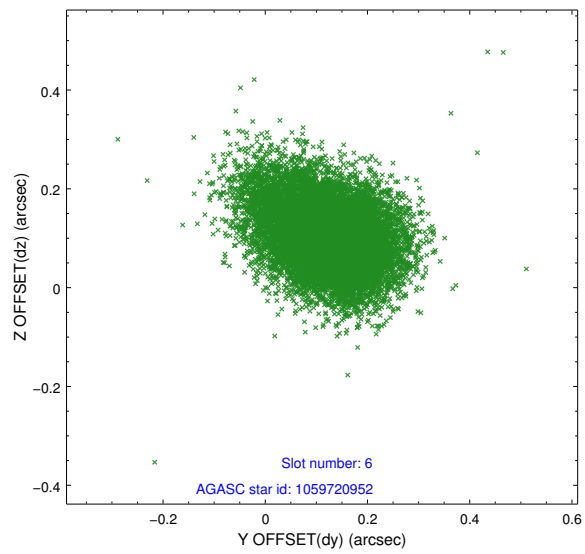
2.4.2 Slot 4



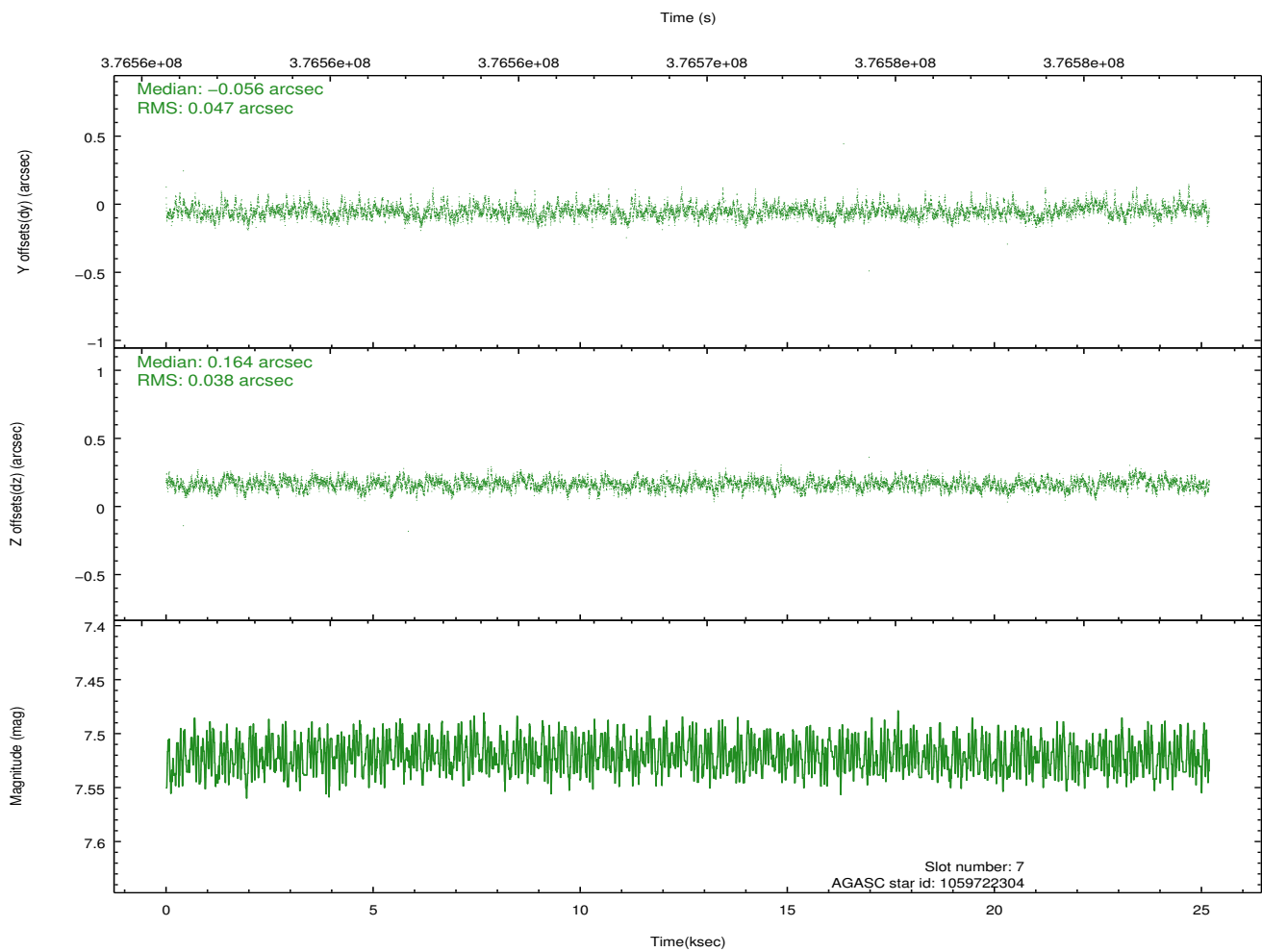
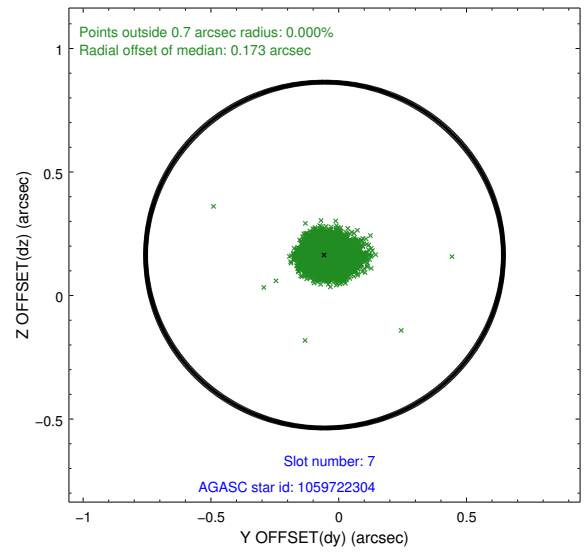
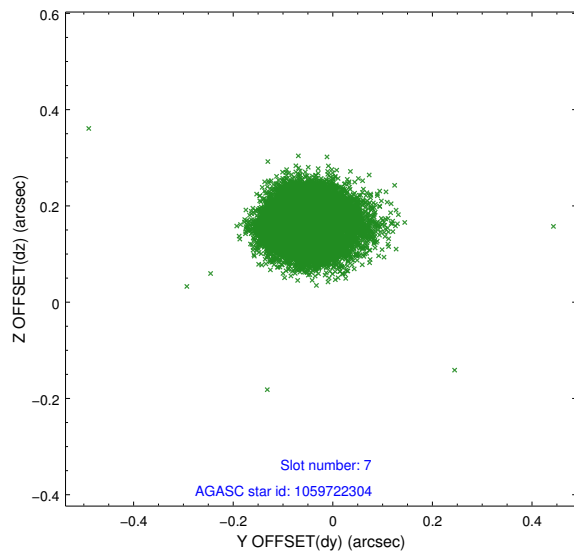
2.4.3 Slot 5



2.4.4 Slot 6

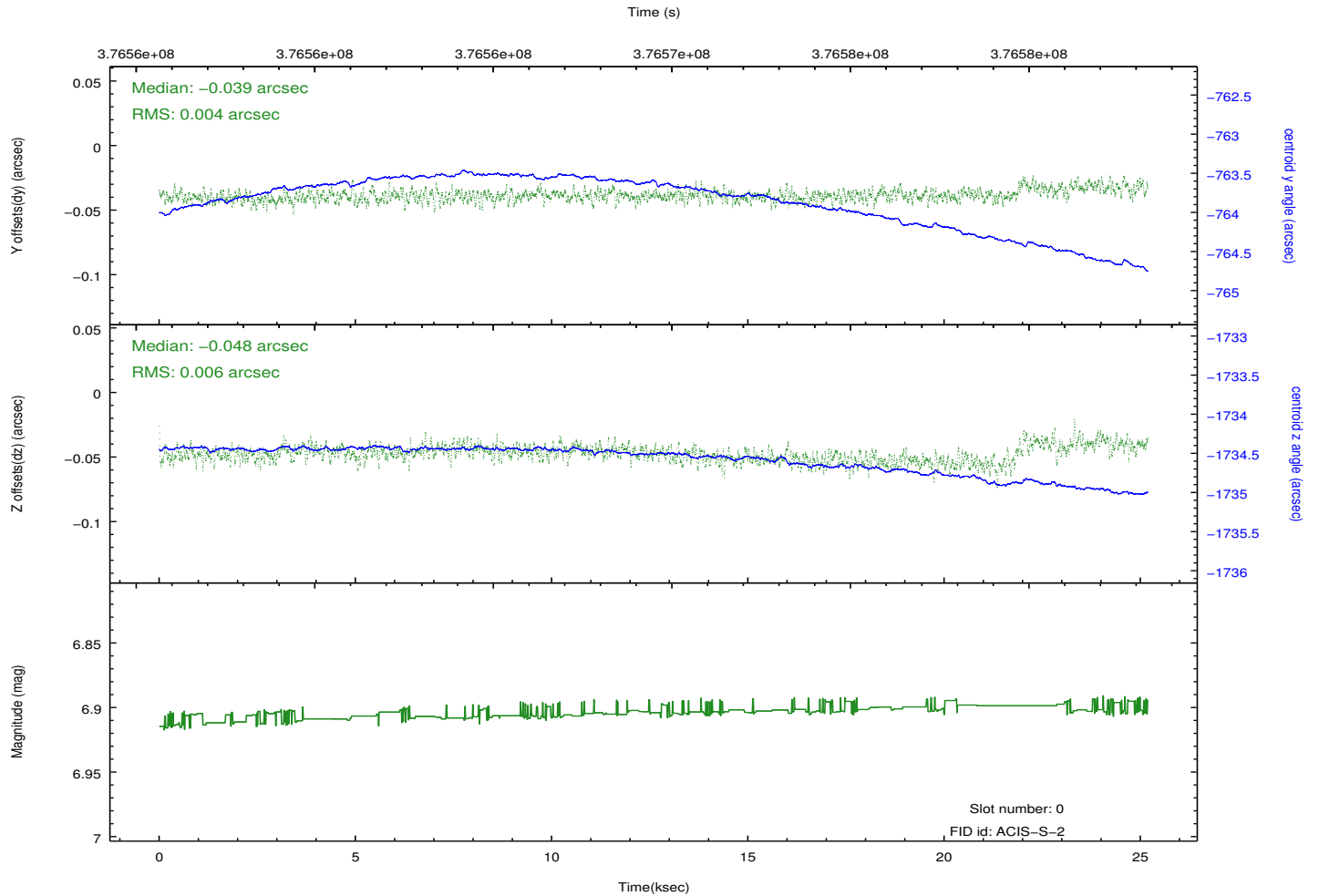
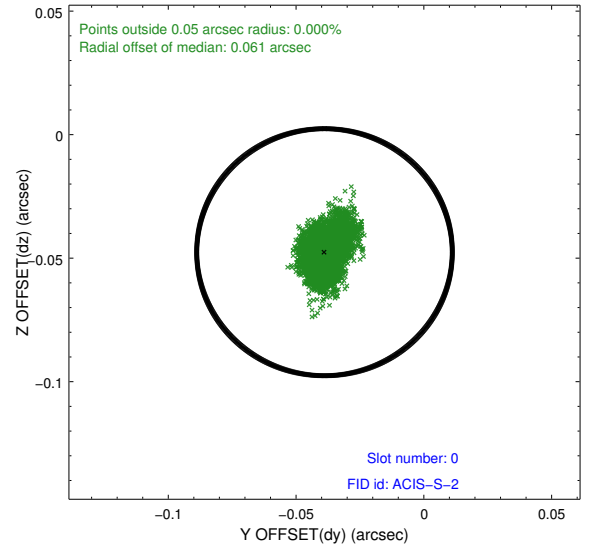
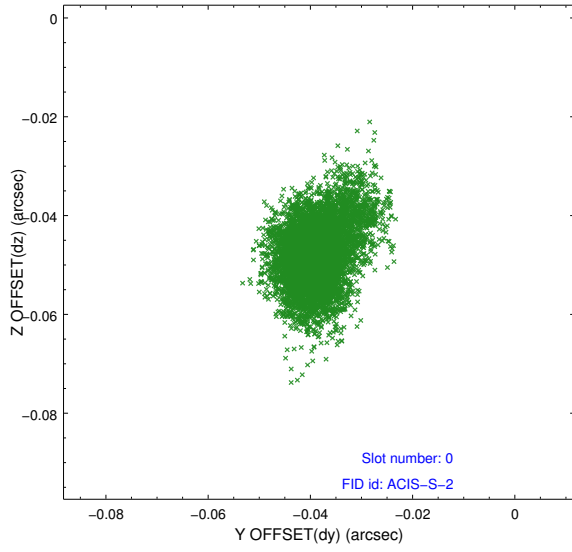


2.4.5 Slot 7

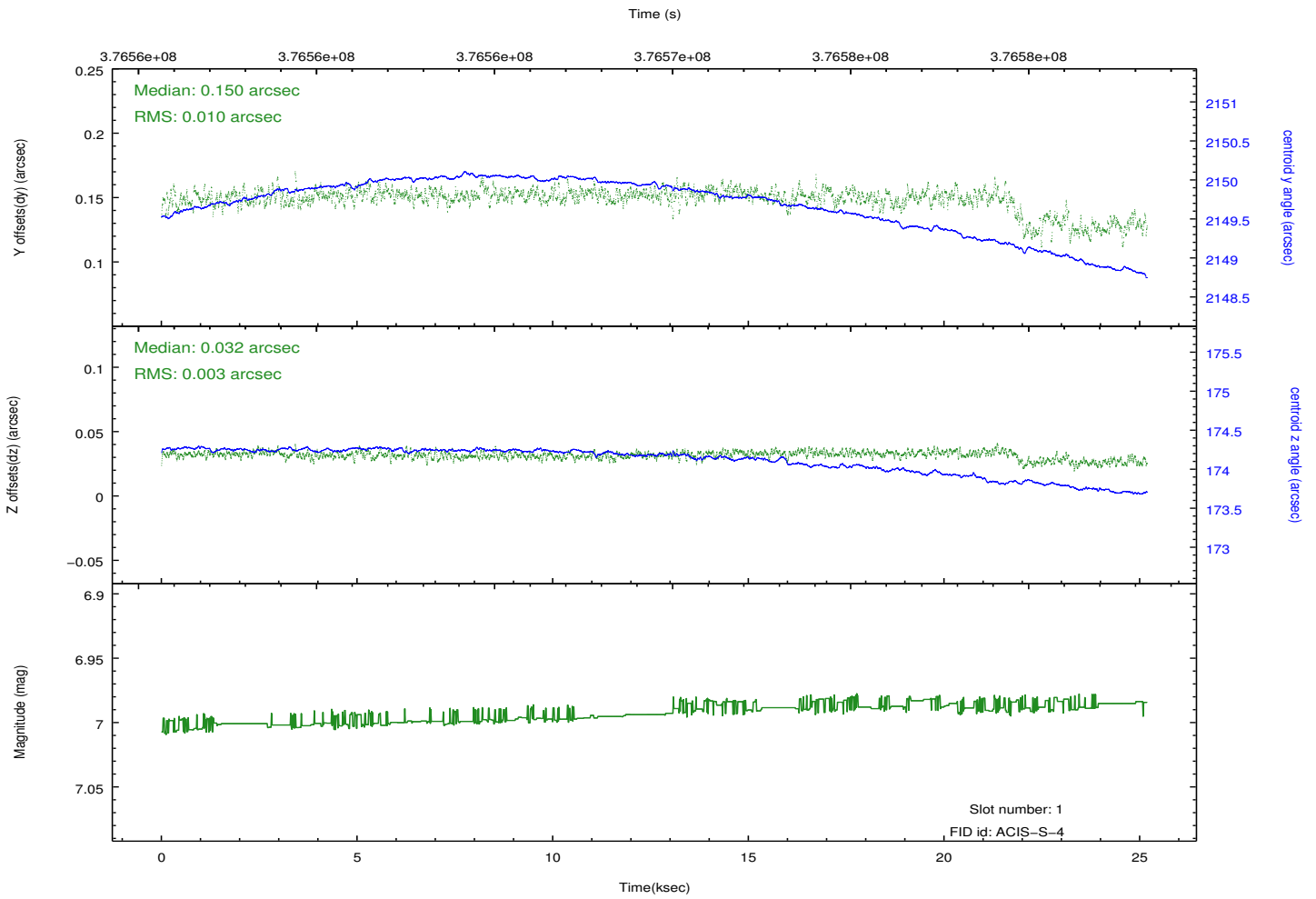
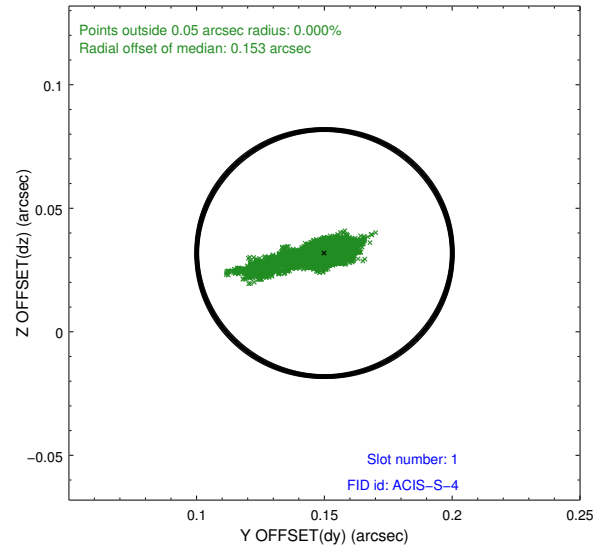
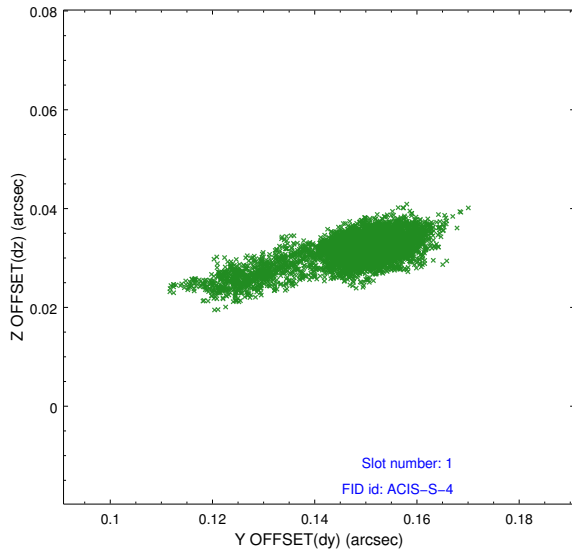


2.5 FID Slots

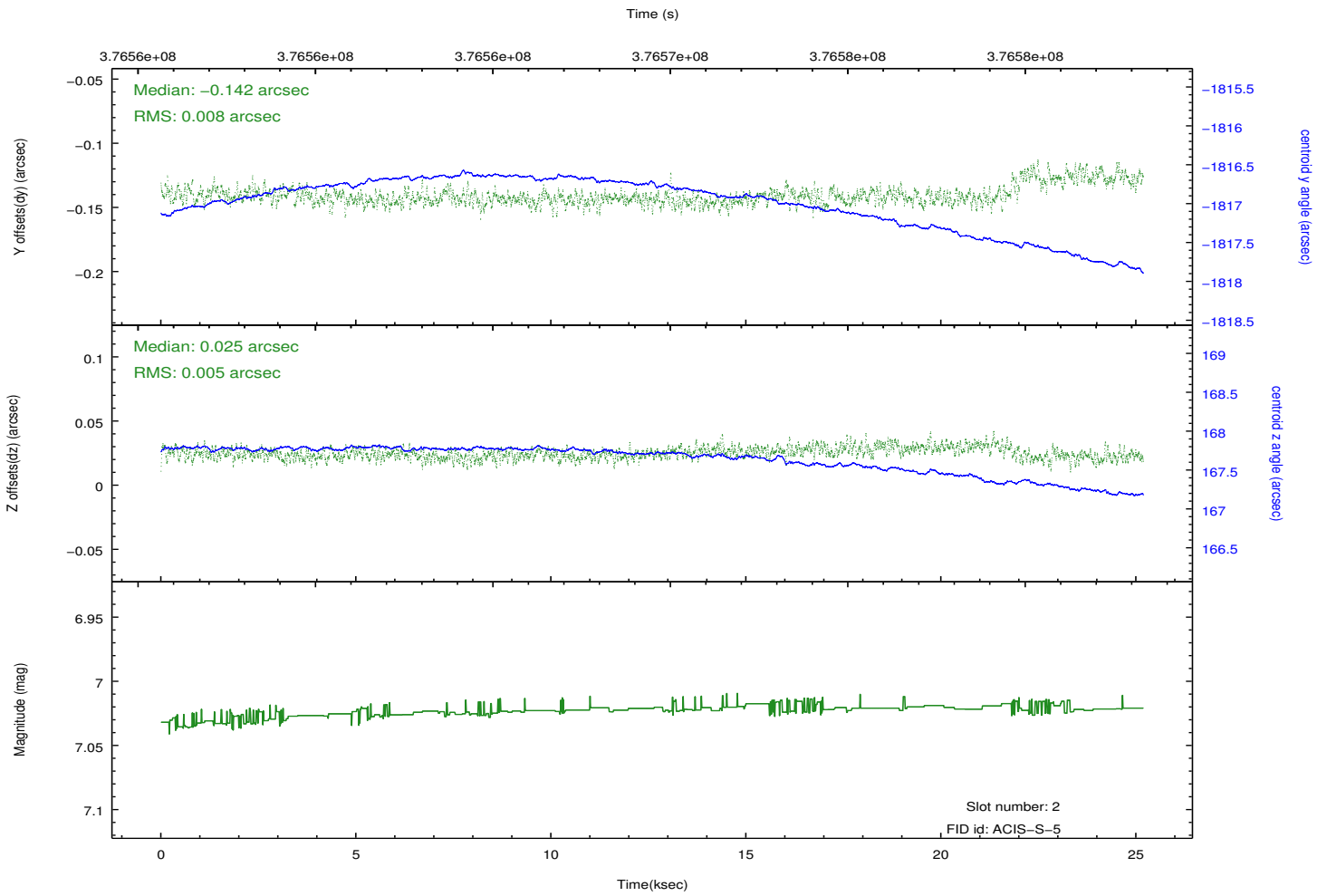
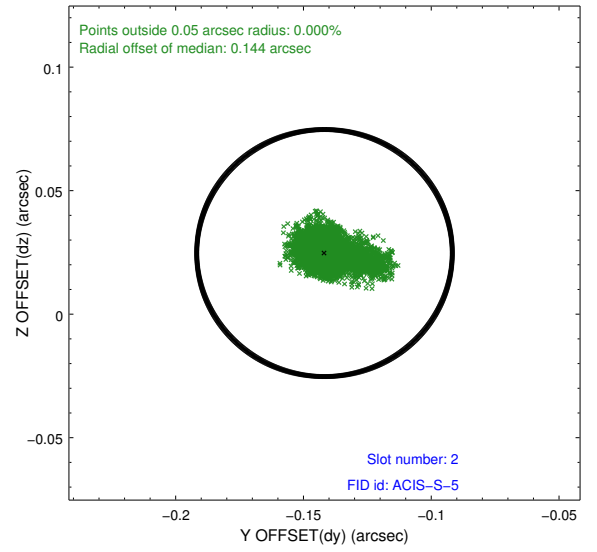
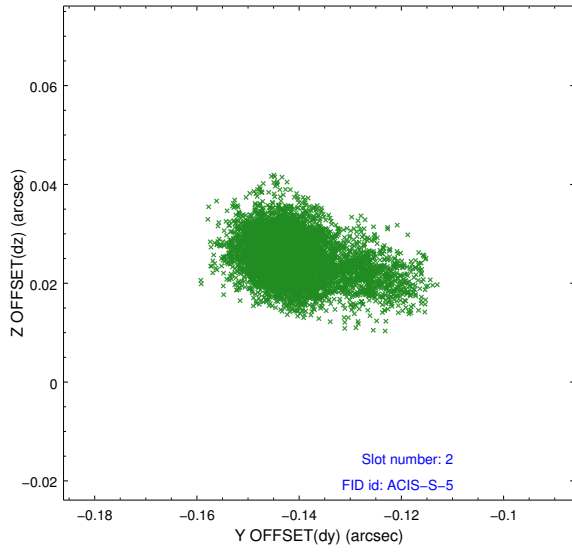
2.5.1 Slot 0



2.5.2 Slot 1



2.5.3 Slot 2



A Summary

A.1 Status

V&V Scientist	Jen Lauer
V&V Date (YYYY-MM-DD)	2012.06.21
V&V Edition	1
V&V Disposition and Status	OK
V&V Charge Time	24.041599910498

A.2 Comments

Roll constraint met.