

V&V Reference Report

L2 ASCDS Version : 8.4.3

Observation 12109 - L2 Version 2
Chandra X-Ray Center

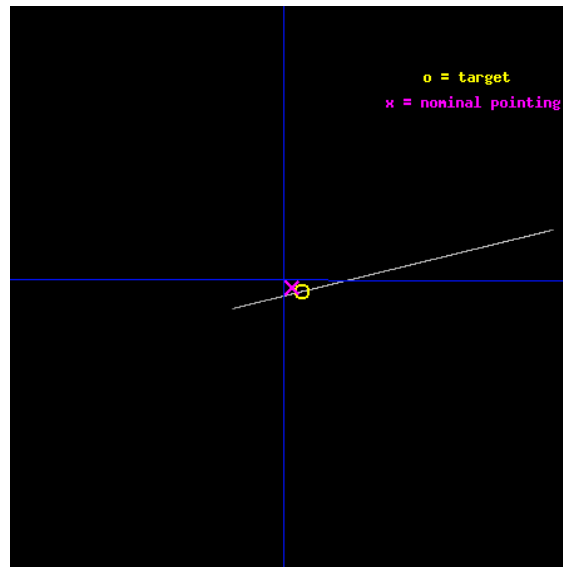
L2 Processing Date : Feb 3 2012

Contents

1	Front	2
2	OBI	3
2.1	OBI	3
2.1.1	Images	3
2.1.2	Bias	3
2.1.3	Parameters	4
2.1.4	Events	4
2.2	Compared Parameters	5
2.3	Aspect	6
2.4	Star Slots	9
2.4.1	Slot 3	9
2.4.2	Slot 4	10
2.4.3	Slot 5	11
2.4.4	Slot 6	12
2.4.5	Slot 7	13
2.5	FID Slots	14
2.5.1	Slot 0	14
2.5.2	Slot 1	15
2.5.3	Slot 2	16
A	Summary	17
A.1	Status	17
A.2	Comments	17

1 Front

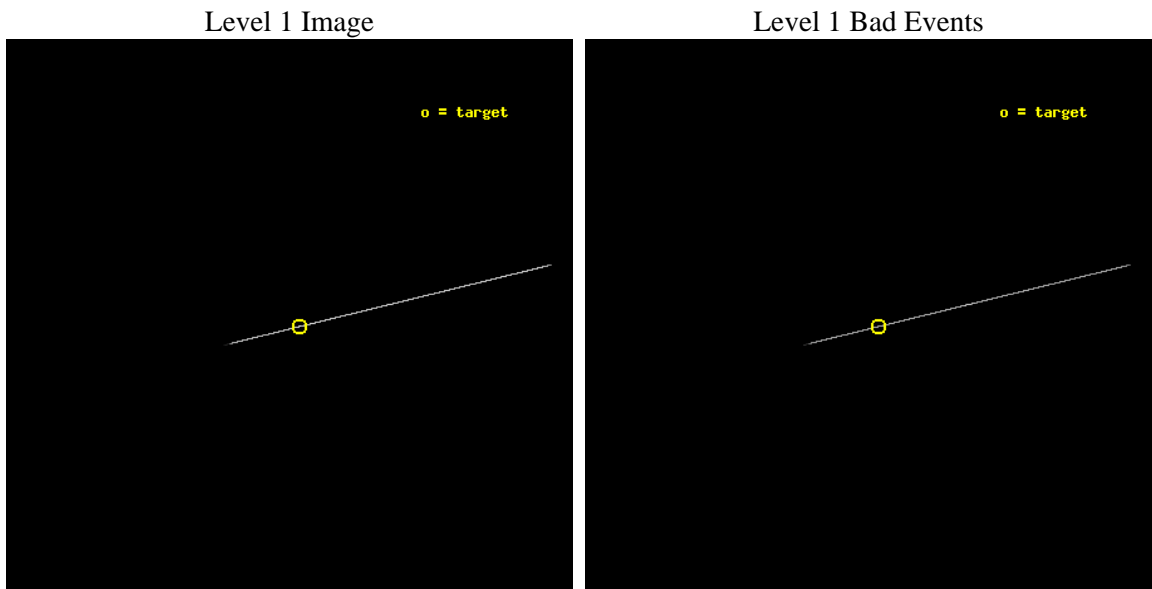
seq_num	501359	Sequence number
obs_id	12109	Observation id
title	Measuring the Magnetic Field of the CCO Pulsar in Puppis A	Proposa
observer	Prof. Jules Halpern	Principal investigator
object	PSR J0821-4300	Source name
ra_targ	125.48875	Observer's specified target RA [deg]
dec_targ	-43.004889	Observer's specified target Dec [deg]
ra_nom	125.49504932917	Nominal RA [deg]
dec_nom	-43.003379586207	Nominal Dec [deg]
roll_nom	346.34120759035	Nominal Roll [deg]
revision	2	Processing version of data
ontime	33131.25	Sum of GTIs [s]
livetime	33001.831054688	Livetime [s]
ontime7	33131.25	Sum of GTIs [s]
l2events	970523	Number of level 2 events



2 OBI

2.1 OBI

2.1.1 Images



2.1.2 Bias

Chip 7



2.1.3 Parameters

obi_num	0	Obi number	sched_exp_time	33000.000000	[s] Scheduled observation exposure time
ascdsver	8.4.3	Processing system revision	ontime	33131.25	Sum of GTIs [s]
caldbver	4.4.7	 	ontime7	33131.25	Sum of GTIs [s]
date	2012-02-03T15:59:00	Date and time of file creation	l1events	1297459	Number of level 1 events
revision	2	Processing version of data			

2.1.4 Events

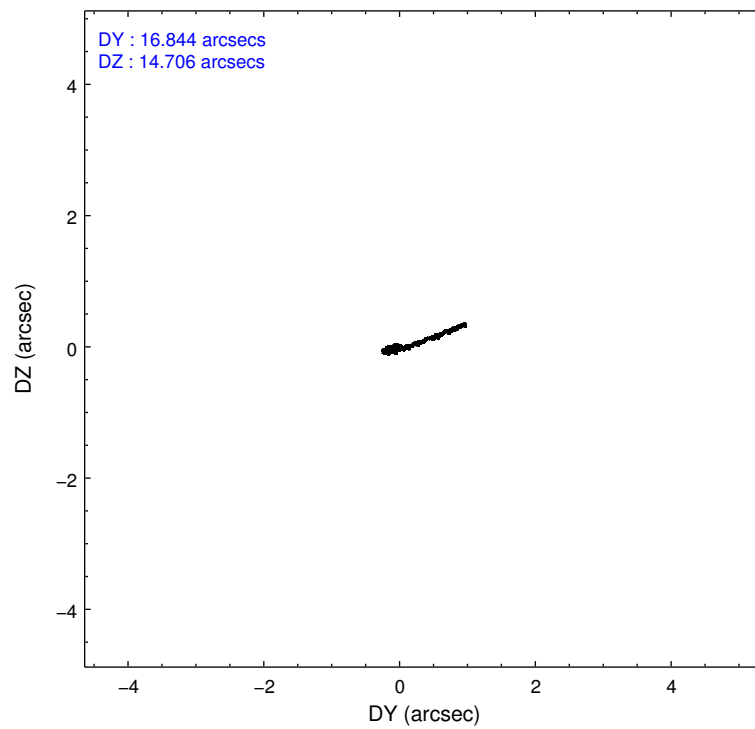
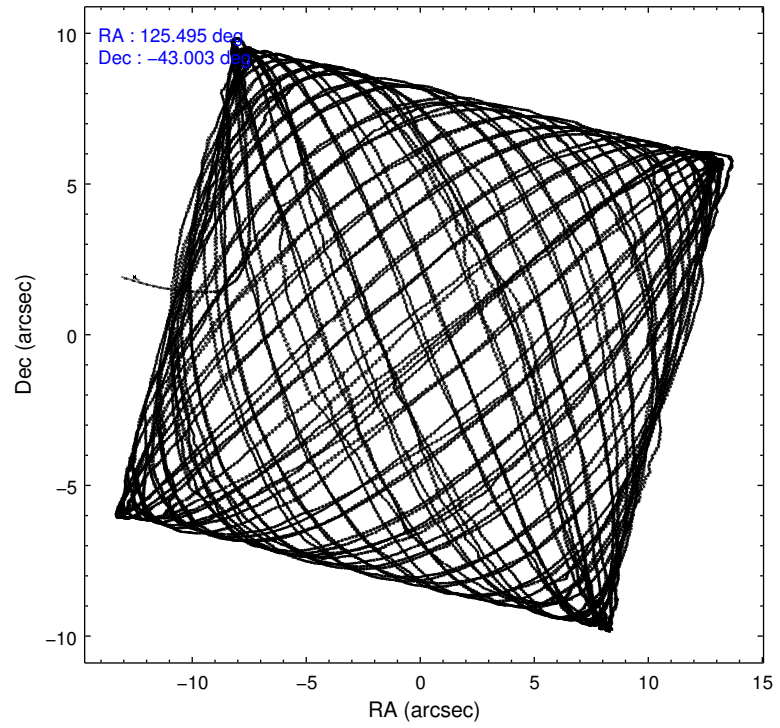
	ccd 7
level 1 events	1297459
rejected events	306700
rejected %	23%

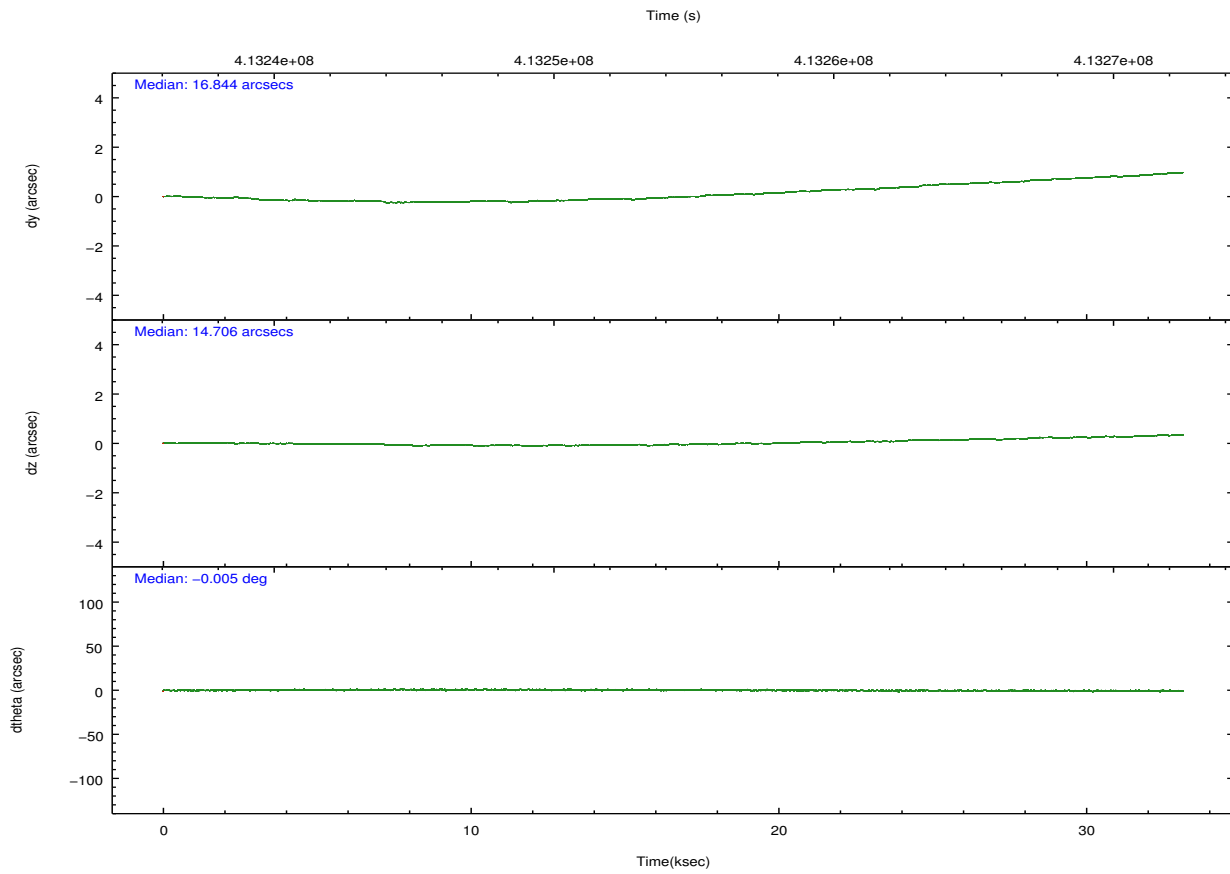
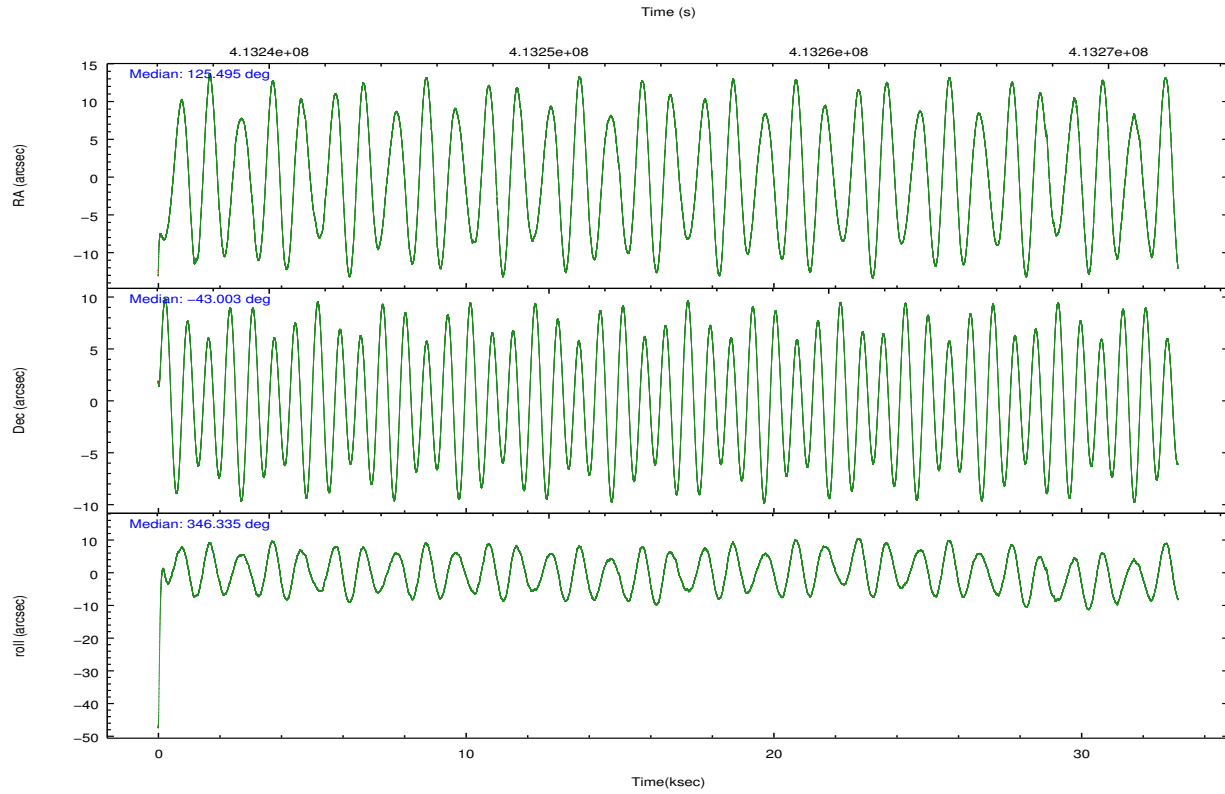
	ccd 7
grade 0 events	294045
	22%
grade 1 events	659
	0%
grade 2 events	290058
	22%
grade 3 events	104305
	8%
grade 4 events	103599
	7%
grade 5 events	35725
	2%
grade 6 events	201795
	15%
grade 7 events	267273
	20%

2.2 Compared Parameters

Parameter	Planned	Actual	Parameter	Planned	Actual
Instrument	ACIS	ACIS	Obspar format version number	7	7
Detector	ACIS-7	ACIS-7	Obspar file type	PREDICTED	ACTUAL
Grating	NONE	NONE	Obspar update status	NONE	UPDATED
Data mode	CC33_FAINT	CC33_FAINT	Number of optional ACIS chips dropped	0	0
Observation mode	POINTING	POINTING	On-chip summing requested	N	N
[deg] Pointing RA	125.459323	125.4950493291747	Subarray requested	NONE	NONE
[deg] Pointing Dec	-43.011439	-43.00337958620726	Alternating exposures requested	N	N
[deg] Pointing Roll	346.160231	346.341207590352	[s] Primary exposure time	0.000000	0
[s] Window start time (MET)	381369666.184000	381369666.184000			
[s] Window stop time (MET)	383788806.184000	383788806.184000			
[mm] SIM focus pos	-0.684267	-0.6828225247311905			
[mm] SIM defocus	0	0.001444936568705701			
[mm] SIM translation stage pos	-190.132523	-190.145094680475			
[mm] SIM translation stage offset	0	0.01257209746719923			
[s] Observation start time (MET)	413237826.184000	413236898.45318			
Observation start date	2011-02-04T20:16:00	2011-02-04T20:01:38			
[s] Observation end time (MET)	413270826.184000	413271681.31748			
Observation end date	2011-02-05T05:26:00	2011-02-05T05:41:21			
Read mode	CONTINUOUS	CONTINUOUS			

2.3 Aspect



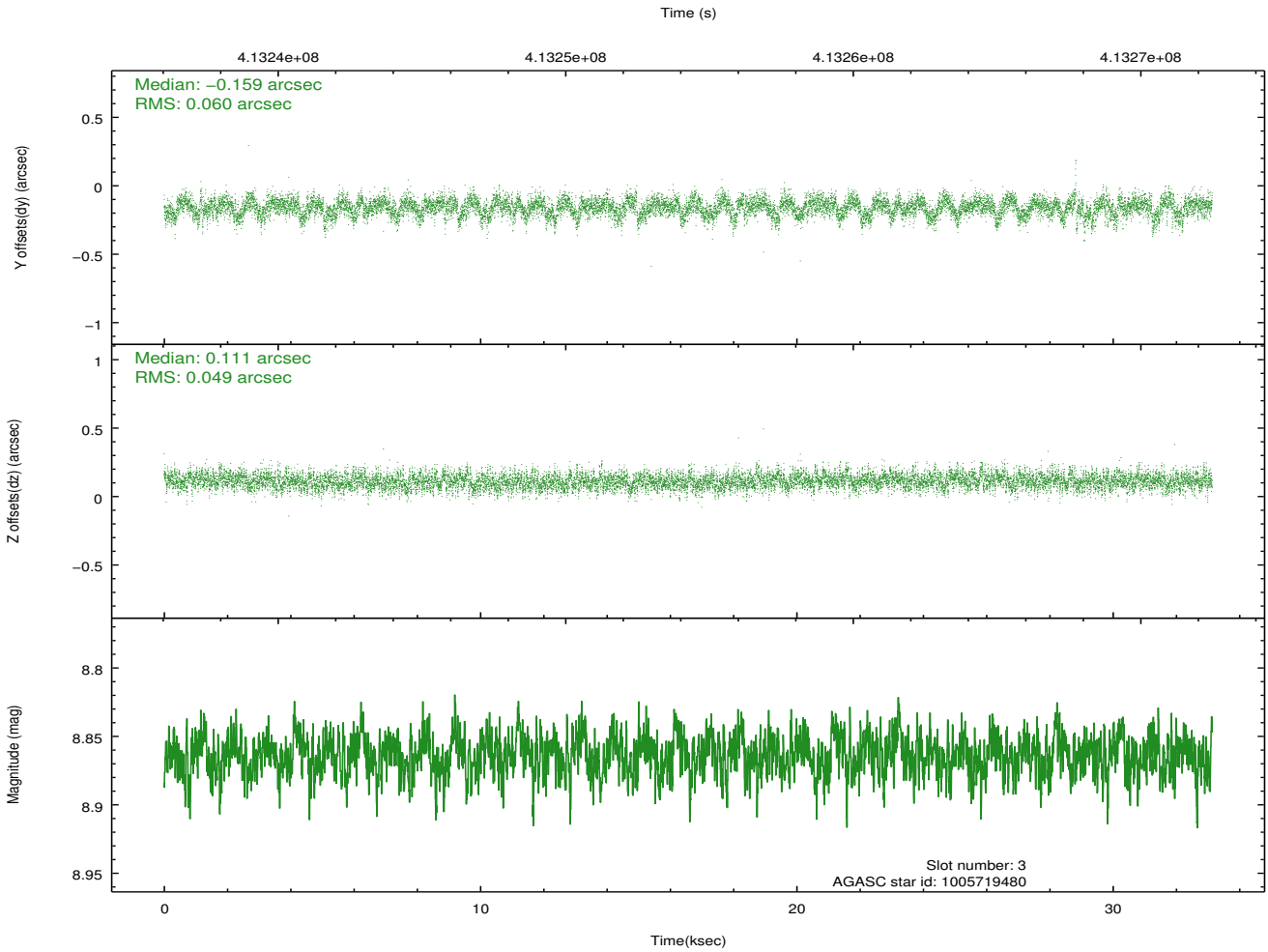
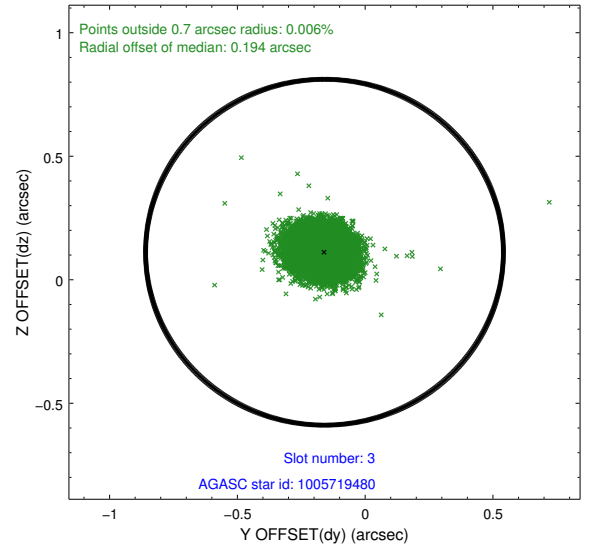
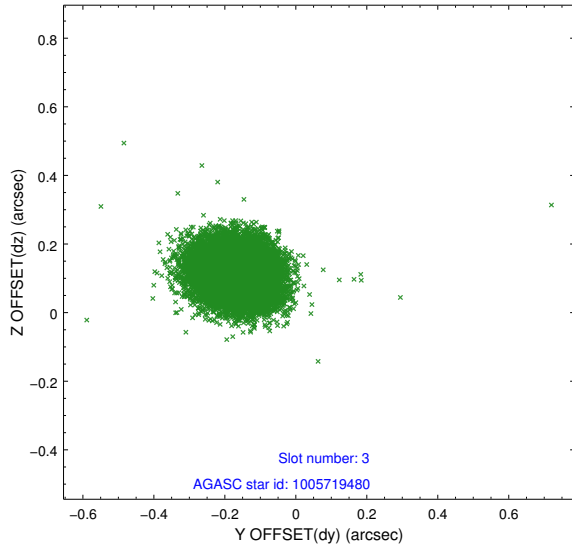


Slot Statistics

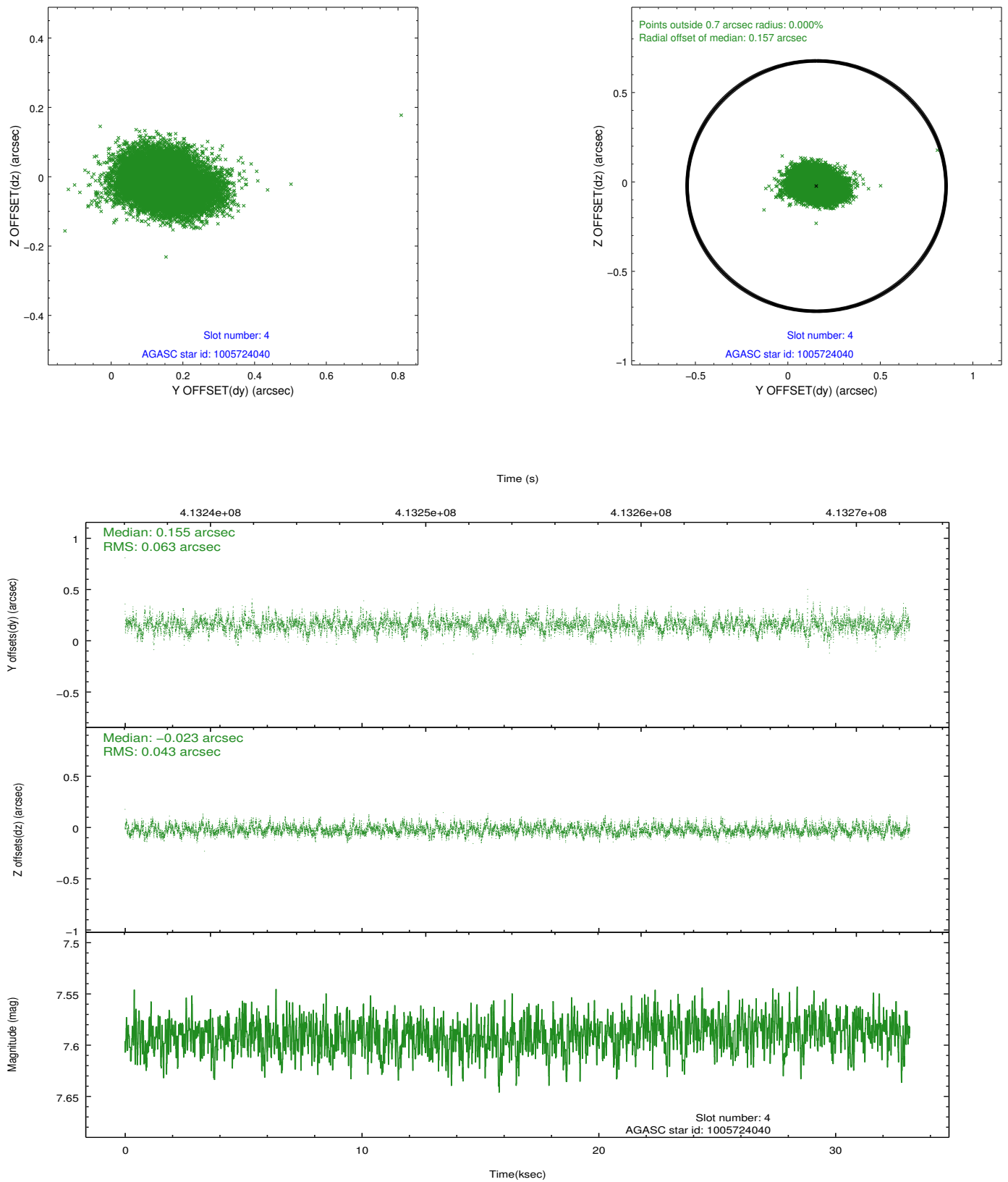
slot	status	id	mag	n_pts	med_dy	med_dz	dr1	dr2	ra	dec	mean_y	mean_z
0	FID	ACIS-S-2	6.99	8082	-0.090	-0.042	0.010	0.016	0.000000	0.000000	-770.09	-1736.07
1	FID	ACIS-S-4	7.07	8083	0.200	0.055	0.011	0.028	0.000000	0.000000	2143.43	172.49
2	FID	ACIS-S-5	7.10	8083	-0.141	-0.003	0.012	0.028	0.000000	0.000000	-1822.94	166.12
3	GUIDE	1005719480	8.86	16125	-0.159	0.111	0.081	0.134	125.476619	-43.605627	556.02	-2065.78
4	GUIDE	1005724040	7.59	16161	0.155	-0.023	0.080	0.135	125.738175	-43.227880	897.47	-582.57
5	GUIDE	1005726872	7.39	16157	-0.120	0.041	0.070	0.114	125.535449	-43.662820	754.00	-2229.07
6	GUIDE	1005064168	7.02	16165	0.003	-0.145	0.071	0.127	124.723843	-42.526737	-2309.63	1218.99
7	GUIDE	1005723560	8.48	16157	0.119	0.013	0.089	0.147	126.279097	-43.364629	2390.28	-730.91

2.4 Star Slots

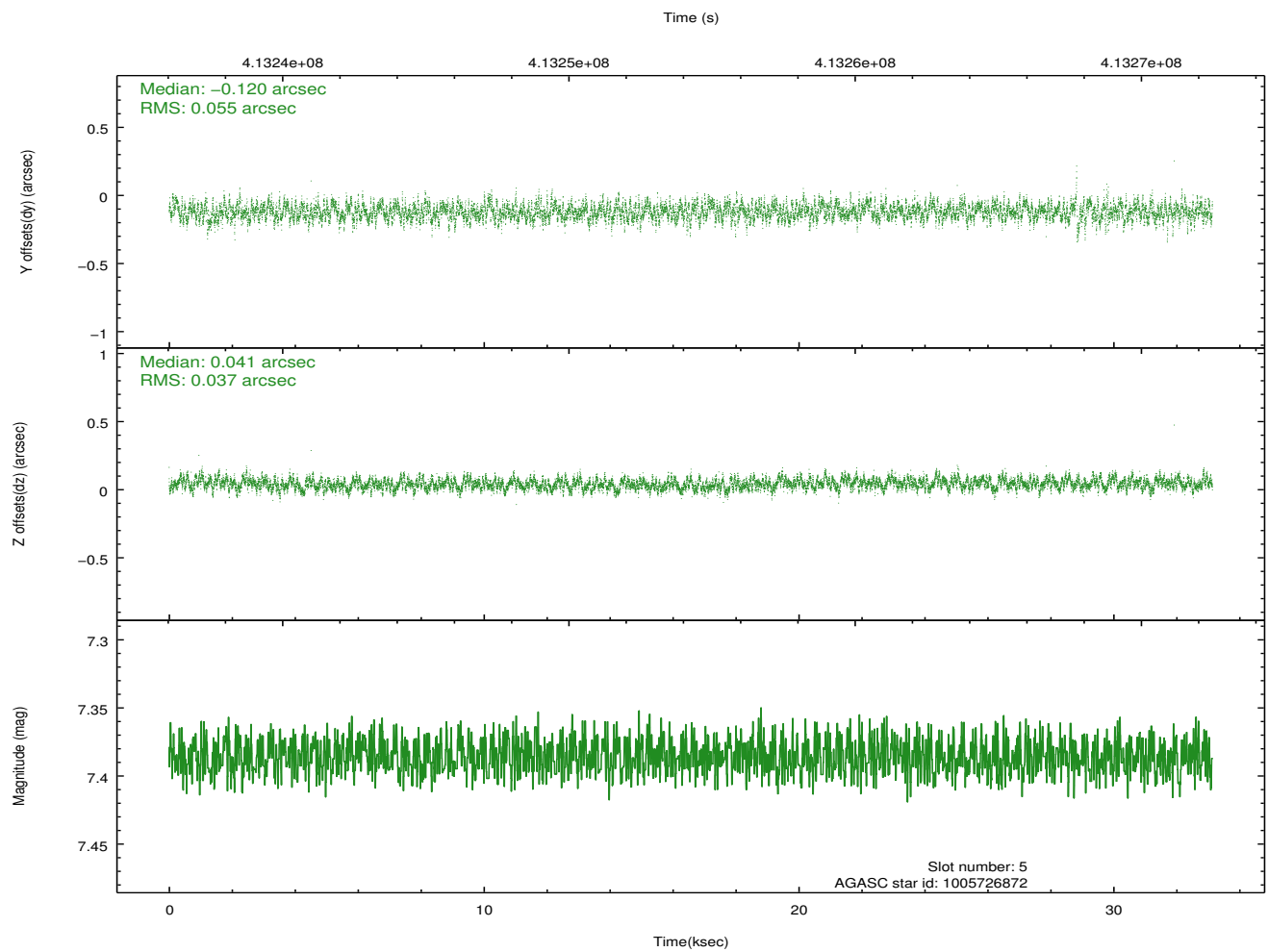
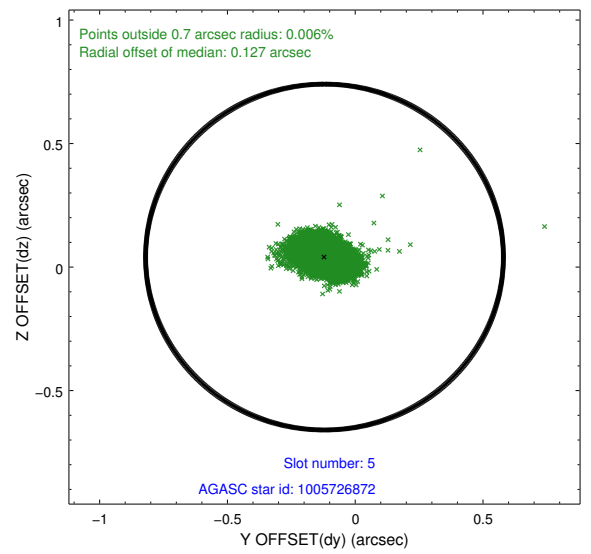
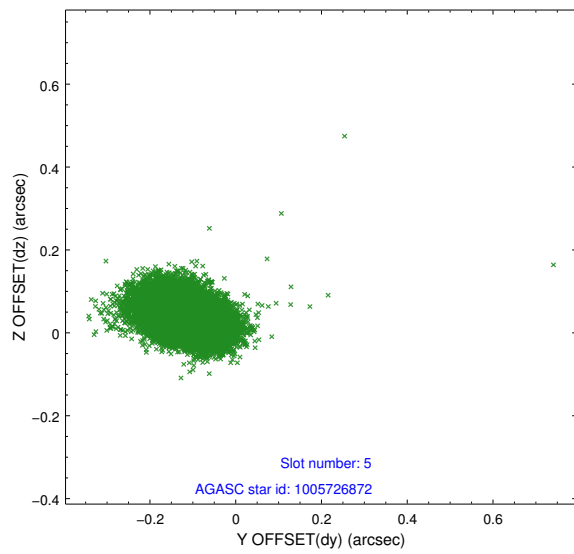
2.4.1 Slot 3



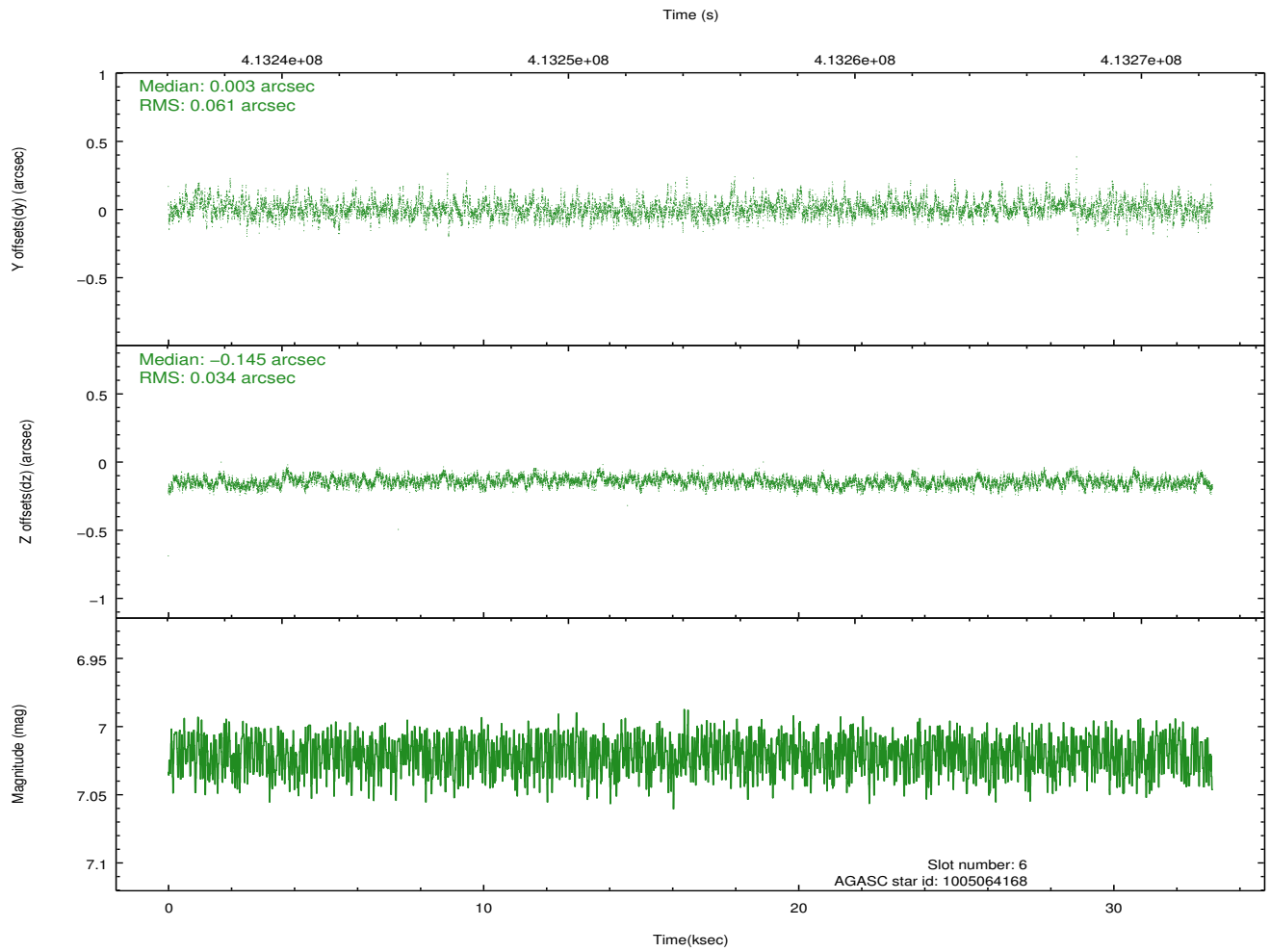
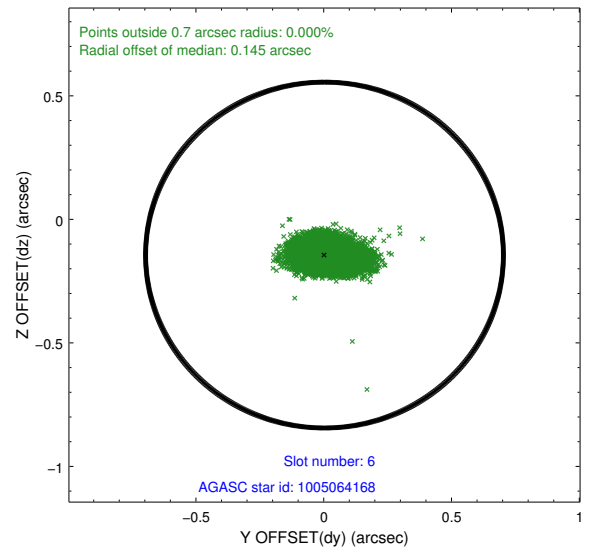
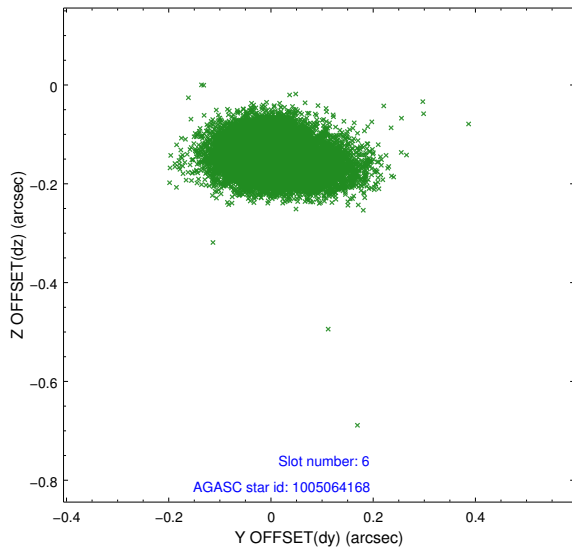
2.4.2 Slot 4



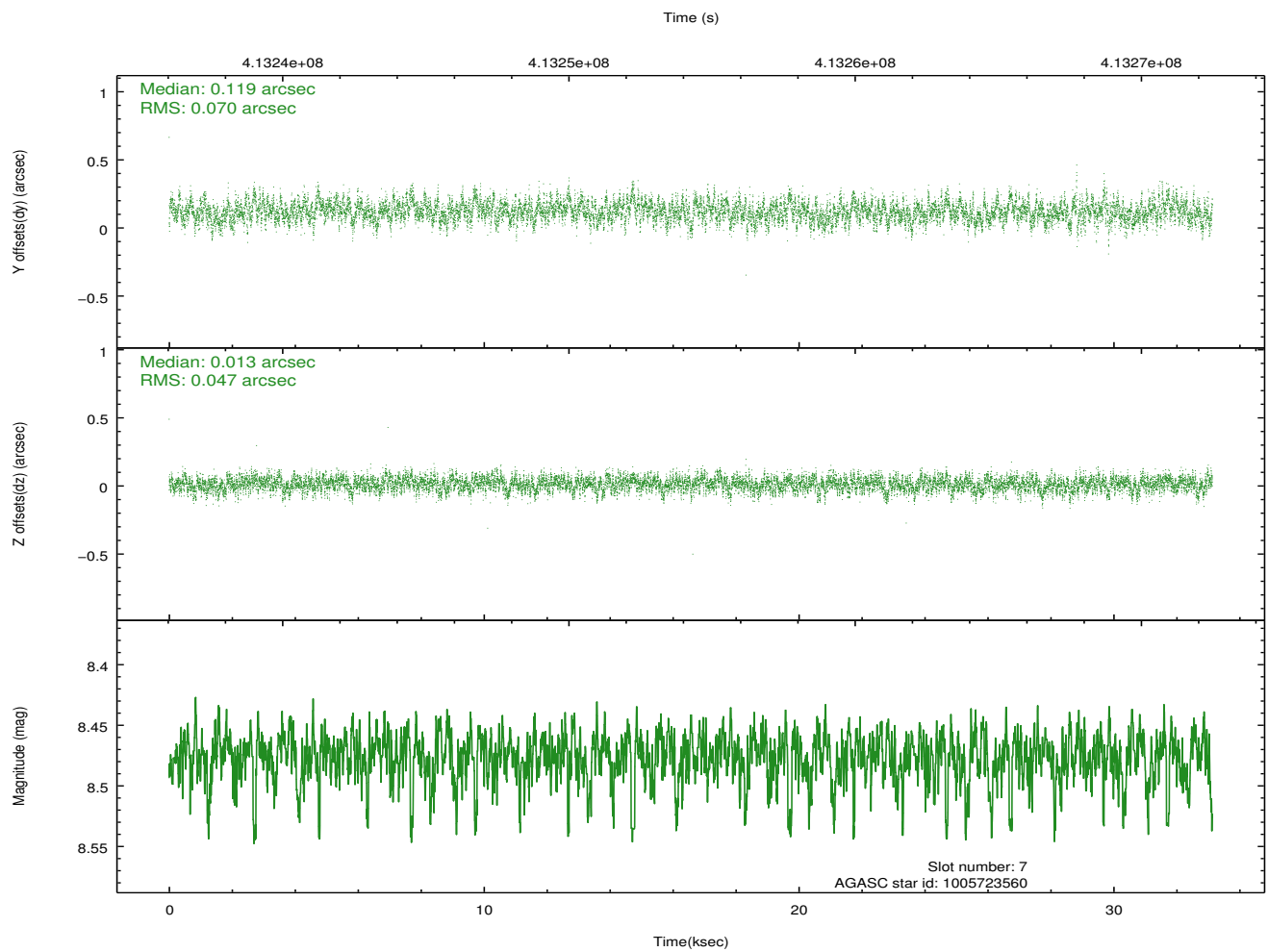
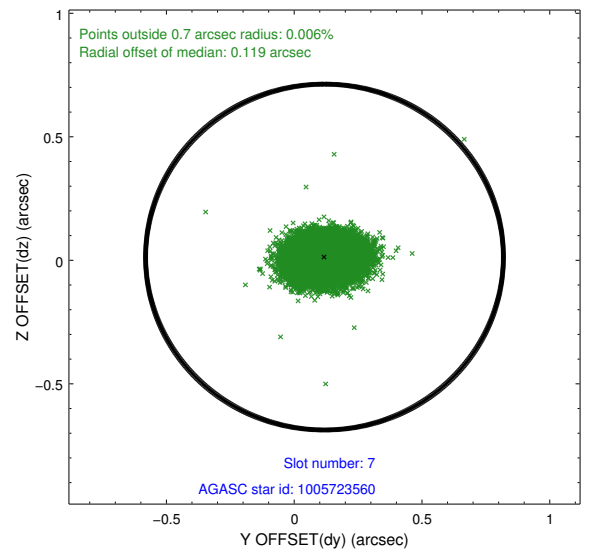
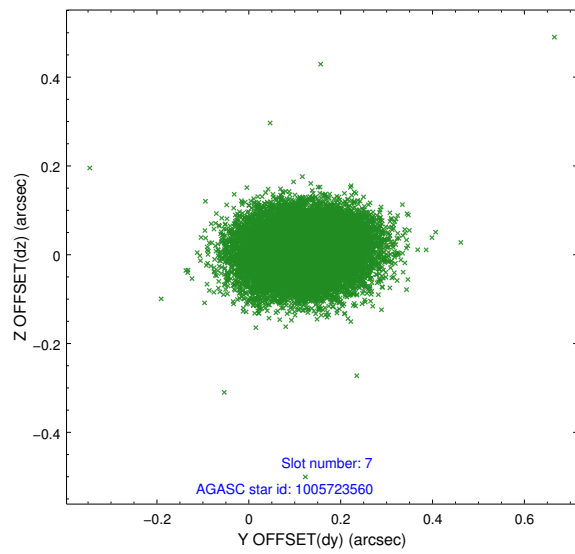
2.4.3 Slot 5



2.4.4 Slot 6

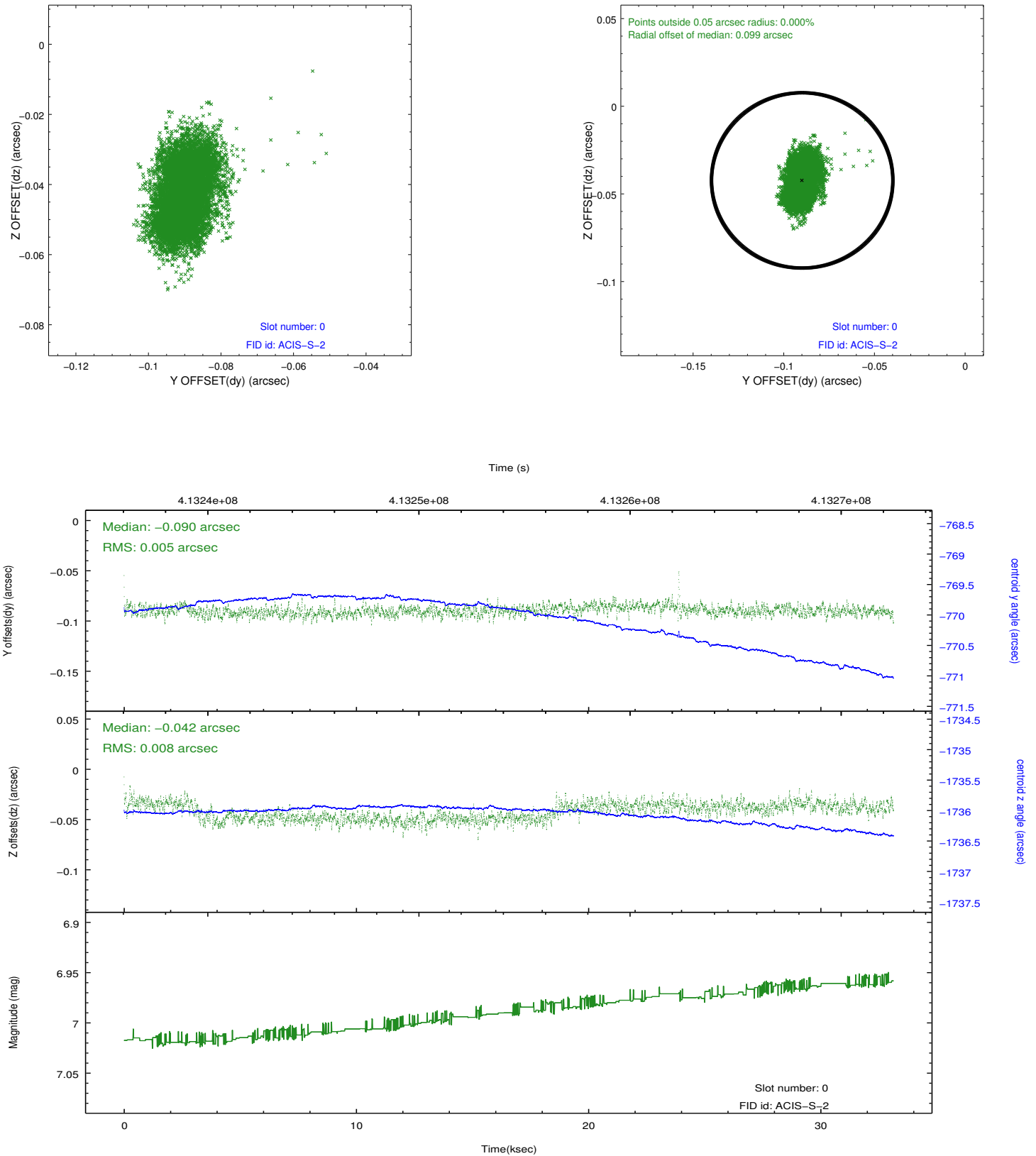


2.4.5 Slot 7

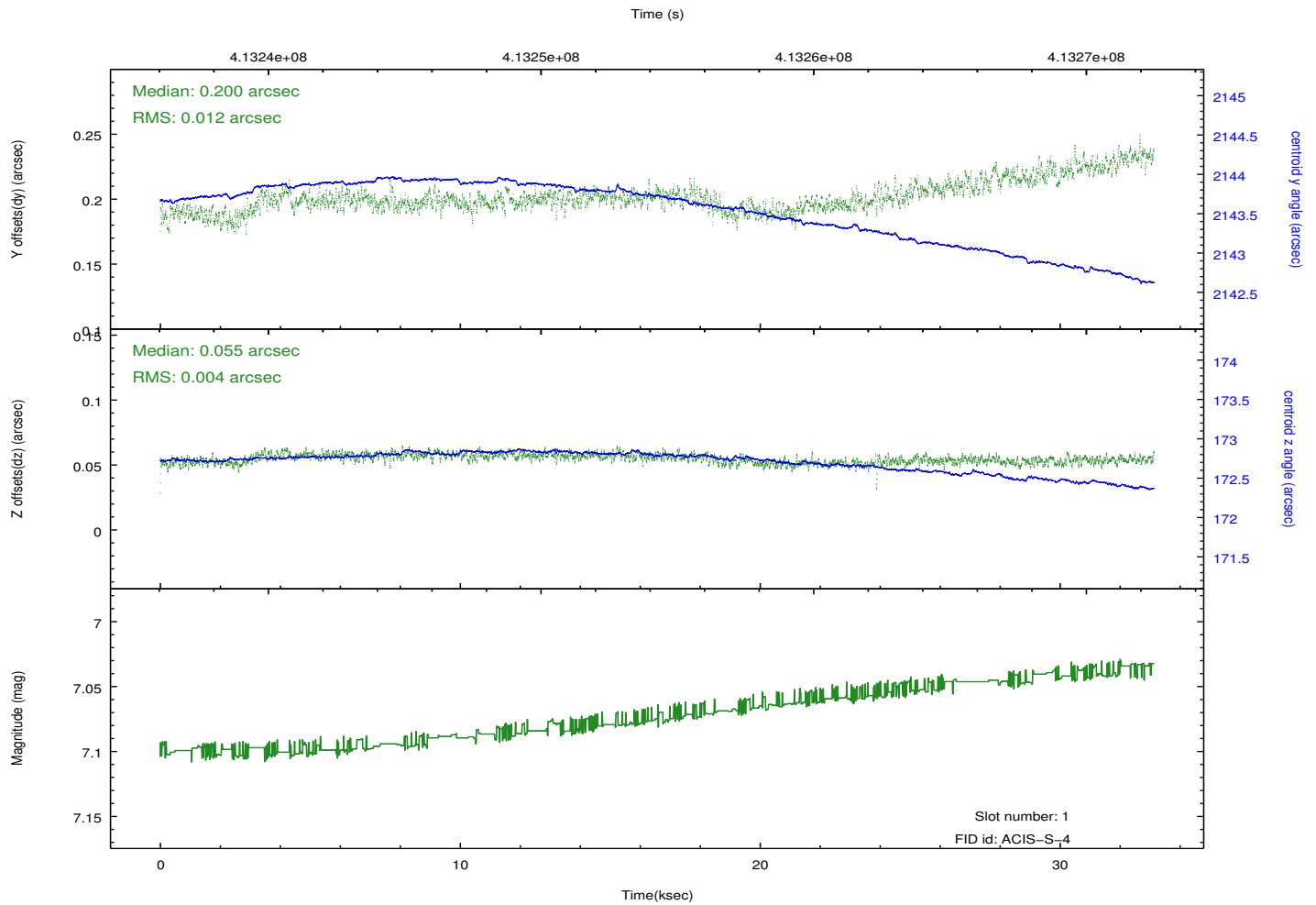
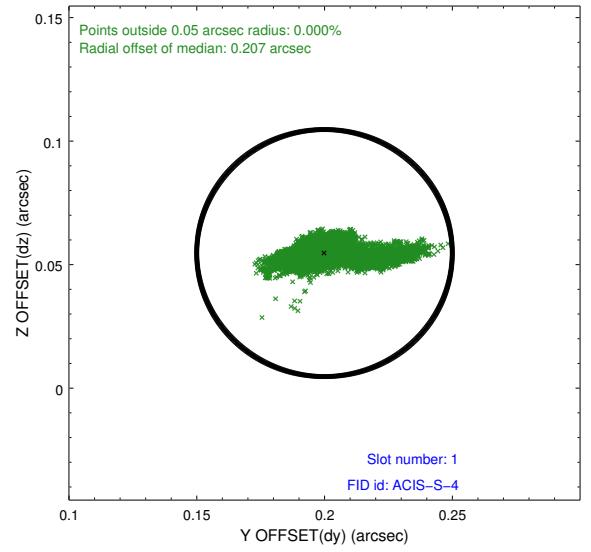
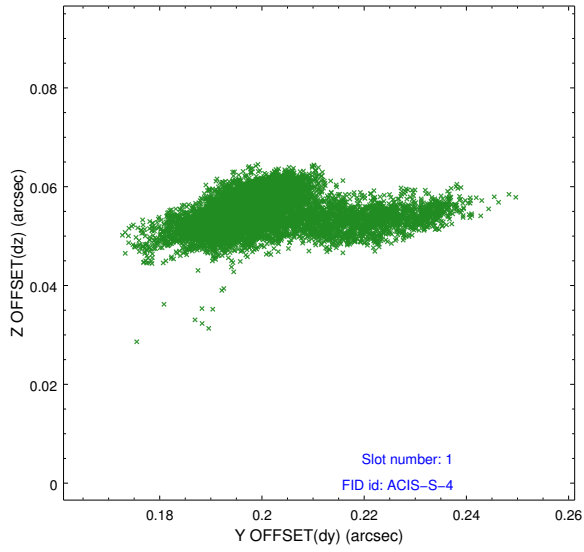


2.5 FID Slots

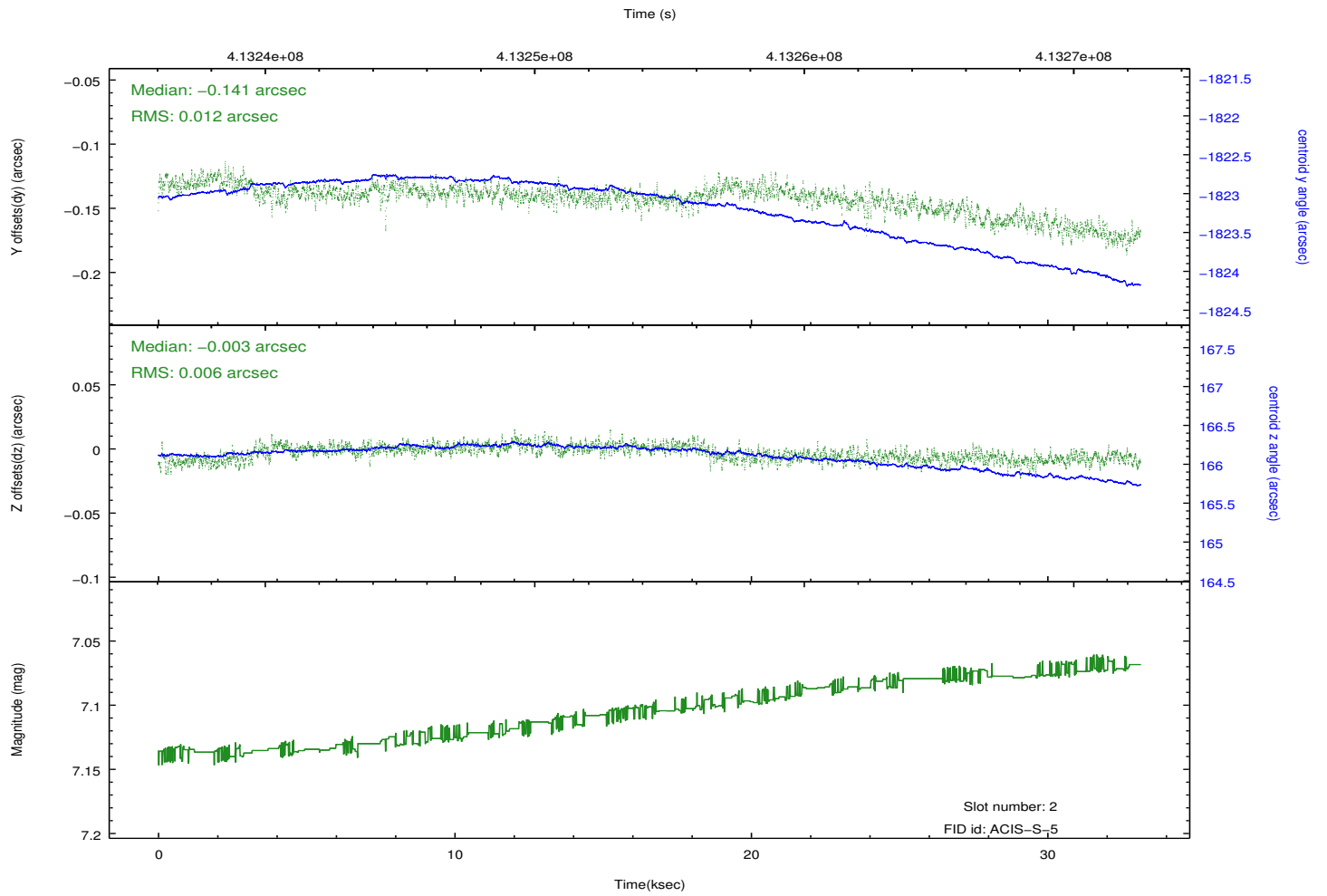
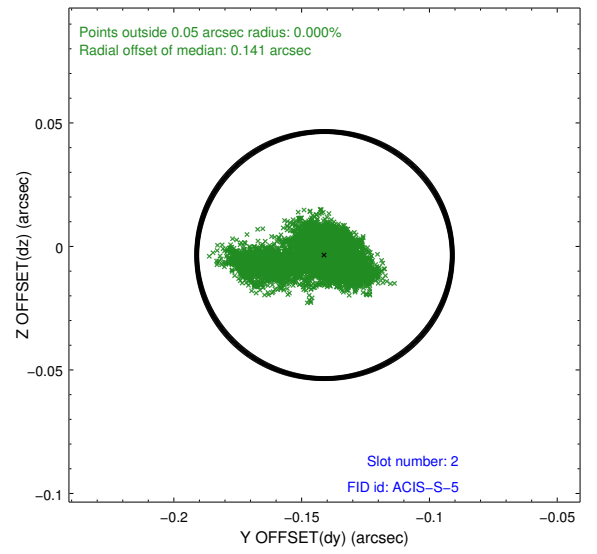
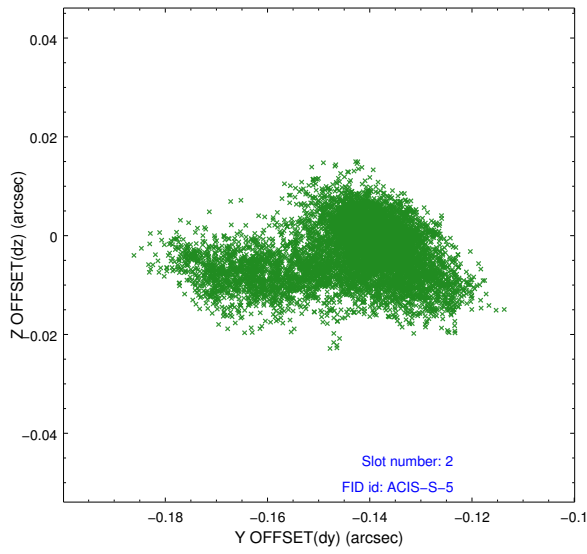
2.5.1 Slot 0



2.5.2 Slot 1



2.5.3 Slot 2



A Summary

A.1 Status

V&V Scientist	Joy Nichols
V&V Date (YYYY-MM-DD)	2012.02.08
V&V Edition	1
V&V Disposition and Status	OK
V&V Charge Time	33.13125

A.2 Comments