

V&V Reference Report

L2 ASCDS Version : 8.4.3

Observation 12189 - L2 Version 2
Chandra X-Ray Center

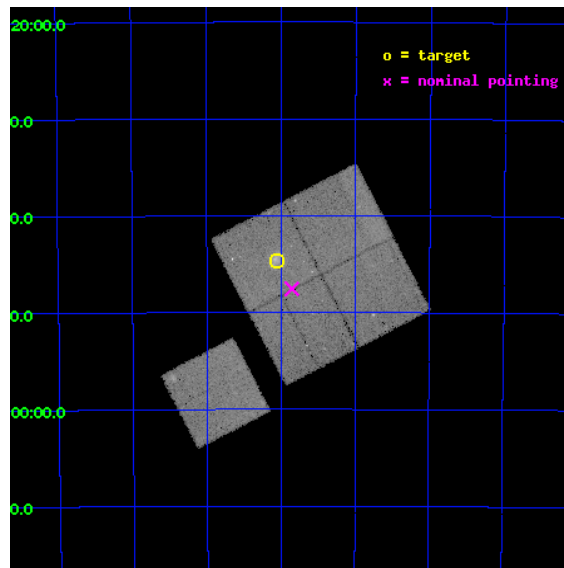
L2 Processing Date : Feb 29 2012

Contents

1	Front	2
2	OBI	3
2.1	OBI	3
2.1.1	Images	3
2.1.2	Bias	3
2.1.3	Parameters	4
2.1.4	Events	4
2.2	Compared Parameters	5
2.3	Aspect	6
2.4	Star Slots	9
2.4.1	Slot 3	9
2.4.2	Slot 4	10
2.4.3	Slot 5	11
2.4.4	Slot 6	12
2.4.5	Slot 7	13
2.5	FID Slots	14
2.5.1	Slot 0	14
2.5.2	Slot 1	15
2.5.3	Slot 2	16
A	Summary	17
A.1	Status	17
A.2	Comments	17

1 Front

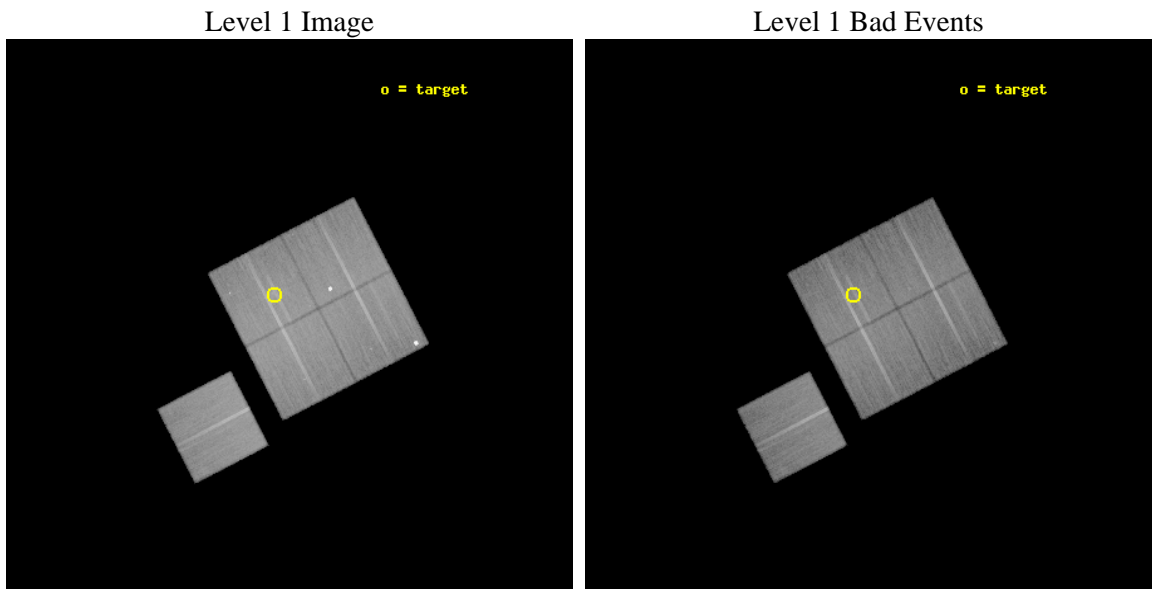
seq_num	800955	Sequence number
obs_id	12189	Observation id
title	Chandra Observations of SZ-selected Galaxy Clusters detected by the South Pole Telescope	Proposal title
observer	Prof. Gordon Garmire	Principal investigator
object	SPT-CLJ2106-5845	Source name
dtcycle	0	
cycle	P	events from which exps? Prim/Second/Both
ra_targ	316.515	Observer's specified target RA [deg]
dec_targ	-58.745306	Observer's specified target Dec [deg]
ra_nom	316.46354231983	Nominal RA [deg]
dec_nom	-58.792716139455	Nominal Dec [deg]
roll_nom	242.64564233703	Nominal Roll [deg]
revision	2	Processing version of data
ontime	48764.936596096	Sum of GTIs [s]
livetime	48127.786799244	Livetime [s]
ontime0	48767.954466343	Sum of GTIs [s]
ontime1	48767.995506346	Sum of GTIs [s]
ontime2	48768.036526442	Sum of GTIs [s]
ontime3	48764.936596096	Sum of GTIs [s]
ontime6	48767.913436294	Sum of GTIs [s]
l2events	151983	Number of level 2 events



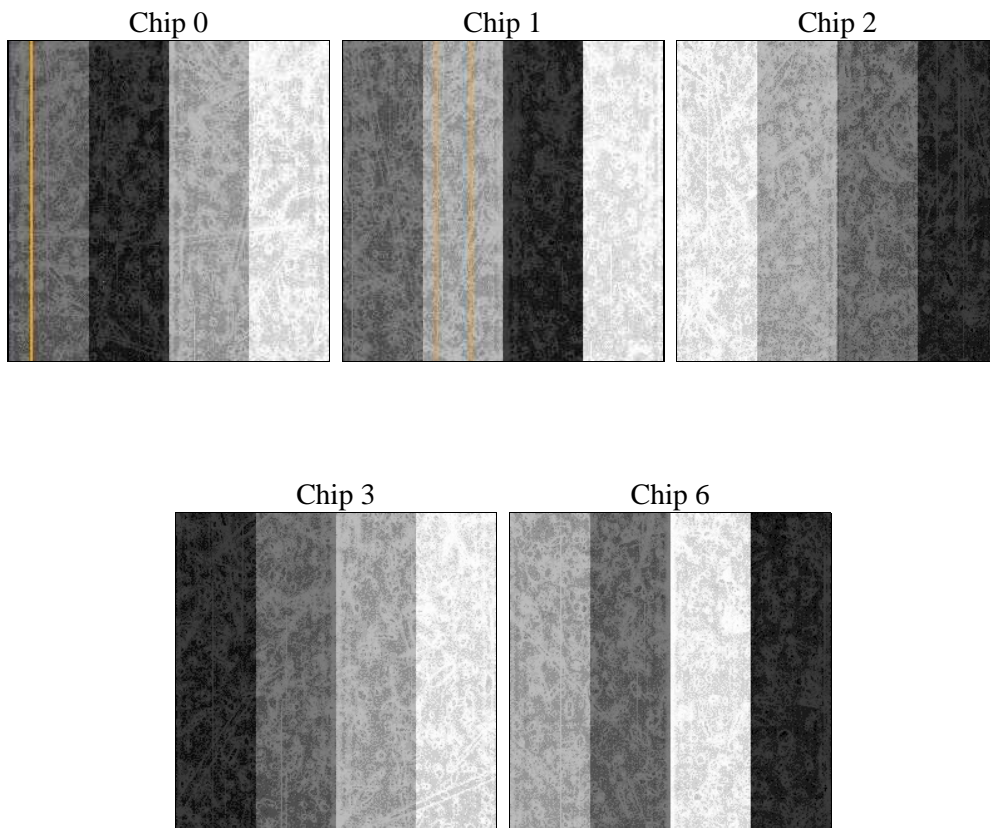
2 OBI

2.1 OBI

2.1.1 Images



2.1.2 Bias



2.1.3 Parameters

obi_num	0	Obi number	sched_exp_time	49000.000000	[s] Scheduled observation exposure time
ascdsver	8.4.3	Processing system revision	ontime	48764.936596096	Sum of GTIs [s]
caldsver	4.4.8	 	ontime0	48767.954466343	Sum of GTIs [s]
date	2012-02-29T13:45:36	Date and time of file creation	ontime1	48767.995506346	Sum of GTIs [s]
revision	2	Processing version of data	ontime2	48768.036526442	Sum of GTIs [s]
			ontime3	48764.936596096	Sum of GTIs [s]
			ontime6	48767.913436294	Sum of GTIs [s]
			l1events	1534272	Number of level 1 events

2.1.4 Events

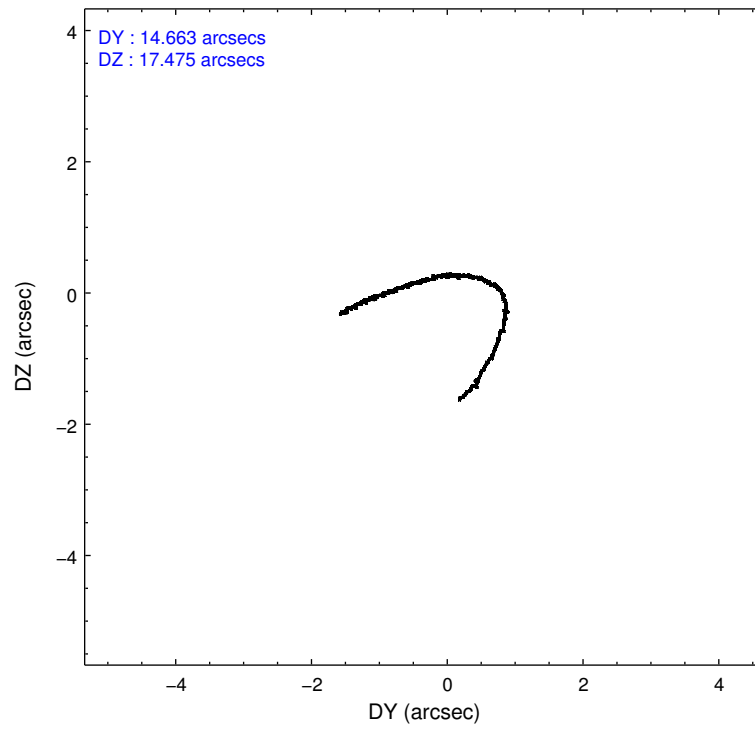
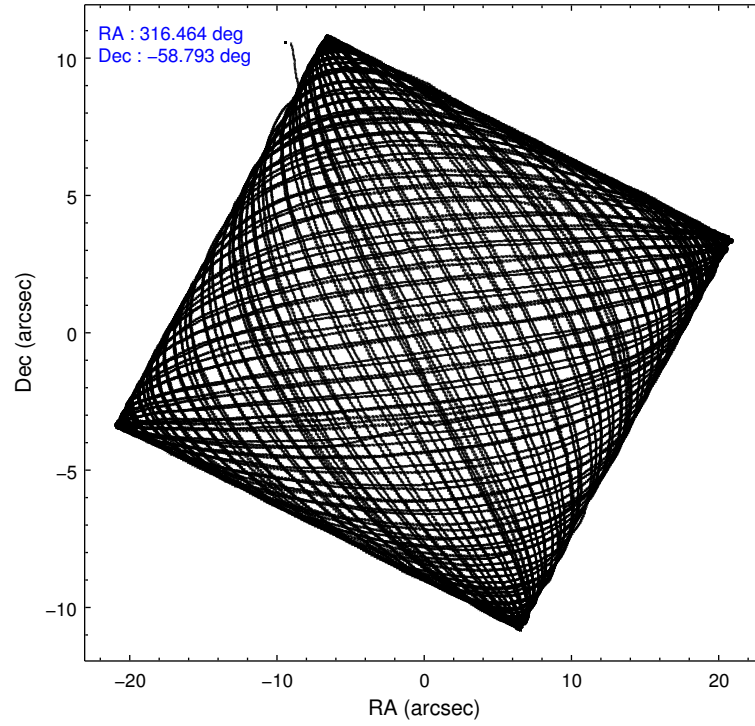
	ccd 0	ccd 1	ccd 2	ccd 3	ccd 6
level 1 events	300548	301852	312844	307626	311402
rejected events	246977	248096	278923	270864	275217
rejected %	82%	82%	89%	88%	88%

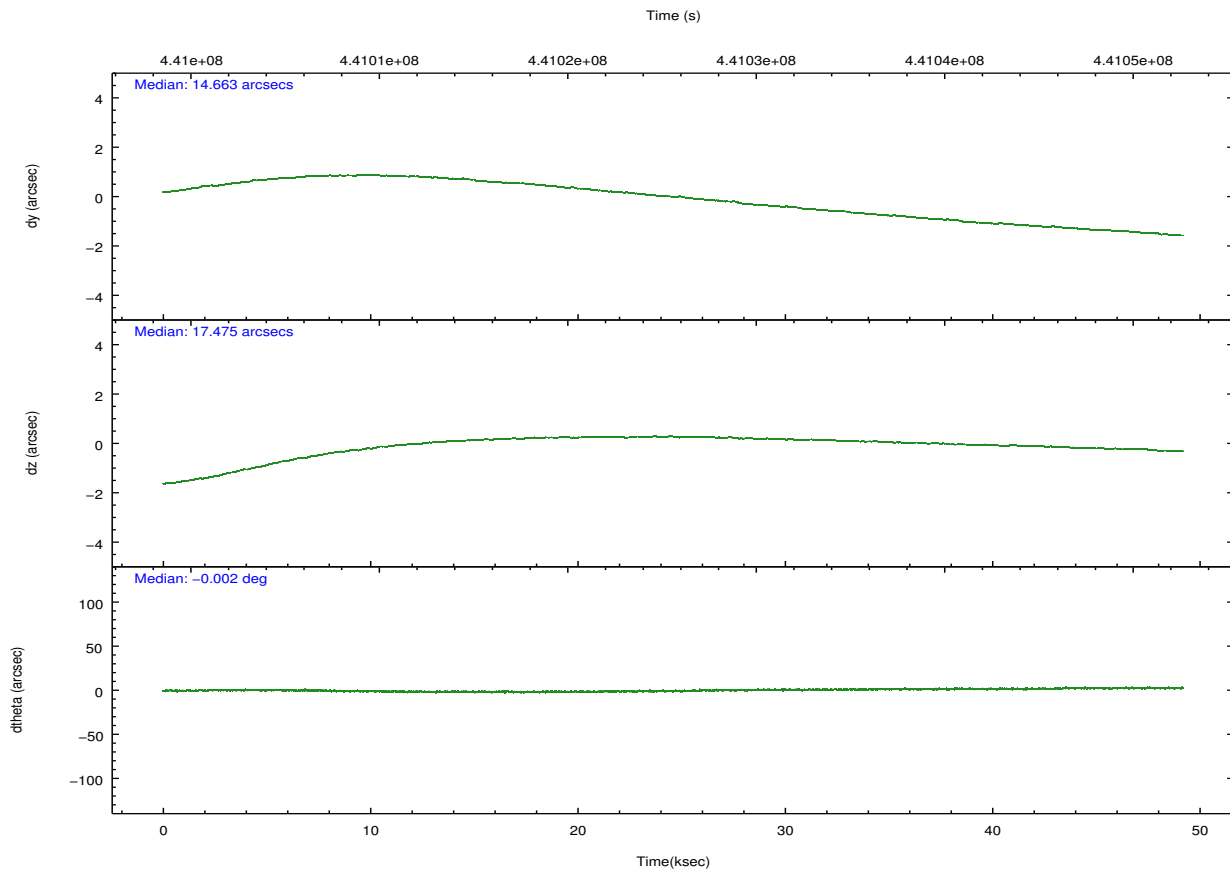
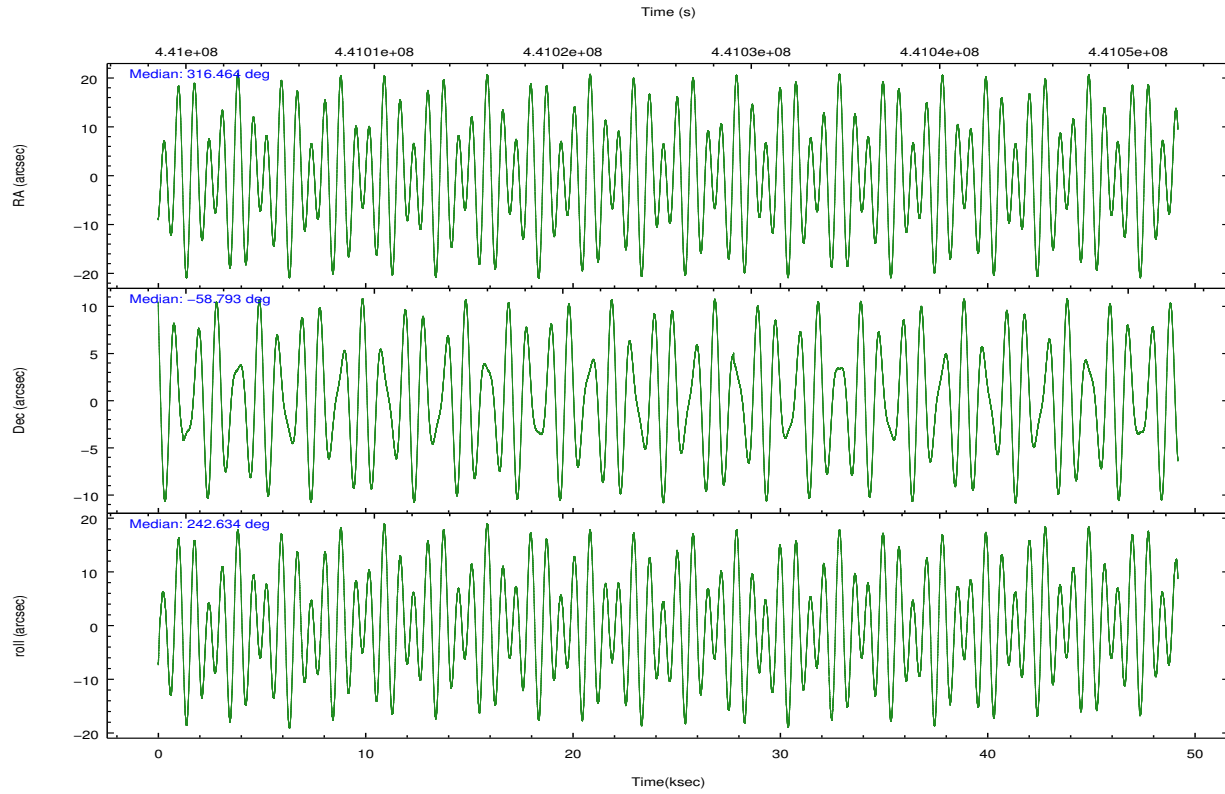
	ccd 0	ccd 1	ccd 2	ccd 3	ccd 6
grade 0 events	21455	28365	11907	14389	12603
	7%	9%	3%	4%	4%
grade 1 events	235	217	164	159	159
	0%	0%	0%	0%	0%
grade 2 events	17879	9383	8451	7961	8196
	5%	3%	2%	2%	2%
grade 3 events	3677	3874	3384	3654	3759
	1%	1%	1%	1%	1%
grade 4 events	3529	3962	3647	3764	3706
	1%	1%	1%	1%	1%
grade 5 events	13541	14346	12873	15289	14355
	4%	4%	4%	4%	4%
grade 6 events	7040	8183	6536	6997	7922
	2%	2%	2%	2%	2%
grade 7 events	233192	233522	265882	255413	260702
	77%	77%	84%	83%	83%

2.2 Compared Parameters

Parameter	Planned	Actual	Parameter	Planned	Actual
Instrument	ACIS	ACIS	Obspar format version number	7	7
Detector	ACIS-01236	ACIS-01236	Obspar file type	PREDICTED	ACTUAL
Grating	NONE	NONE	Obspar update status	NONE	UPDATED
Data mode	VFAINT	VFAINT	CCD I0 on	Y	Y
Observation mode	POINTING	POINTING	CCD I1 on	Y	Y
[deg] Pointing RA	316.460867	316.4635423198325	CCD I2 on	Y	Y
[deg] Pointing Dec	-58.765252	-58.79271613945453	CCD I3 on	Y	Y
[deg] Pointing Roll	242.434672	242.6456423370259	CCD S0 on	N	N
[mm] SIM focus pos	-0.782348	-0.7809083437167272	CCD S1 on	N	N
[mm] SIM defocus	0	0.001439871863259334	CCD S2 on	O2	Y
[mm] SIM translation stage pos	-225.842463	-225.8433433320239	CCD S3 on	O1	N
[mm] SIM translation stage offset	-7.75	-7.749109670905796	CCD S4 on	N	N
[s] Observation start time (MET)	441001165.184000	441000277.89302	CCD S5 on	N	N
Observation start date	2011-12-23T04:18:19	2011-12-23T04:04:37	Number of optional ACIS chips dropped	1	1
[s] Observation end time (MET)	441050165.184000	441051187.59571	On-chip summing requested	N	N
Observation end date	2011-12-23T17:54:59	2011-12-23T18:13:07	Subarray requested	NONE	NONE
Read mode	TIMED	TIMED	Alternating exposures requested	N	N
			[s] Primary exposure time	0.000000	3.1

2.3 Aspect





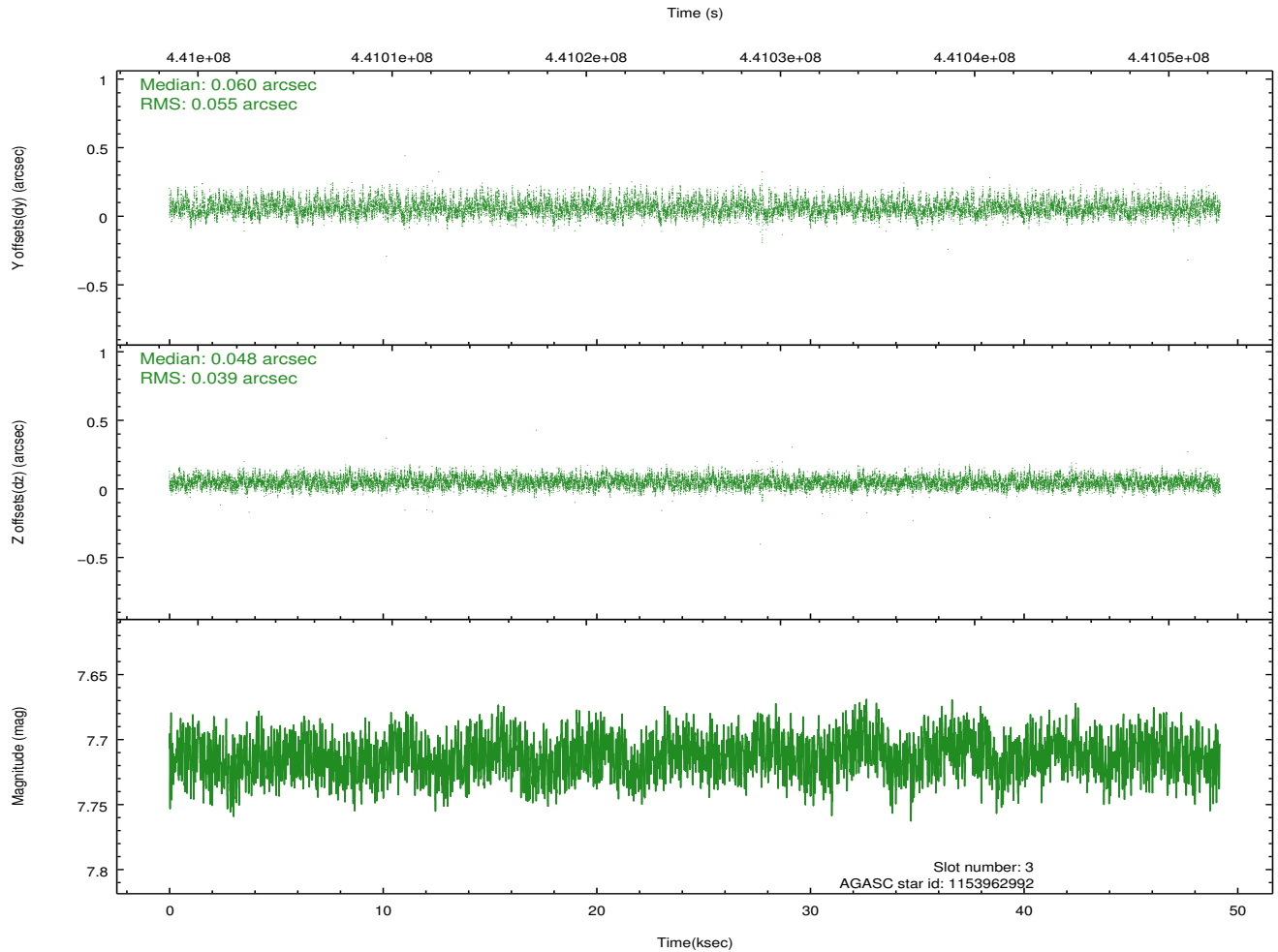
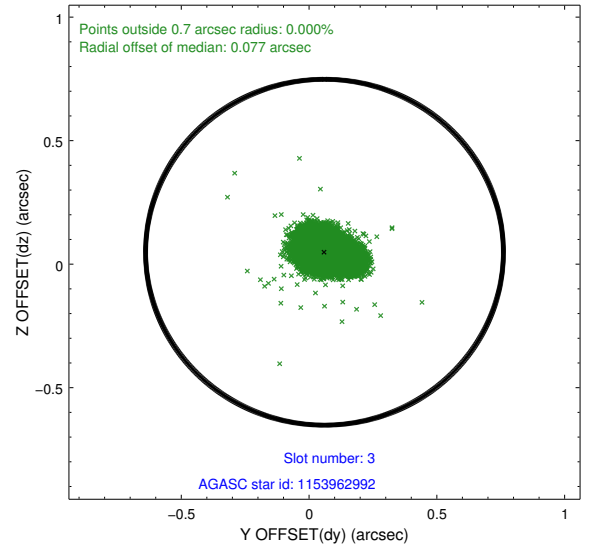
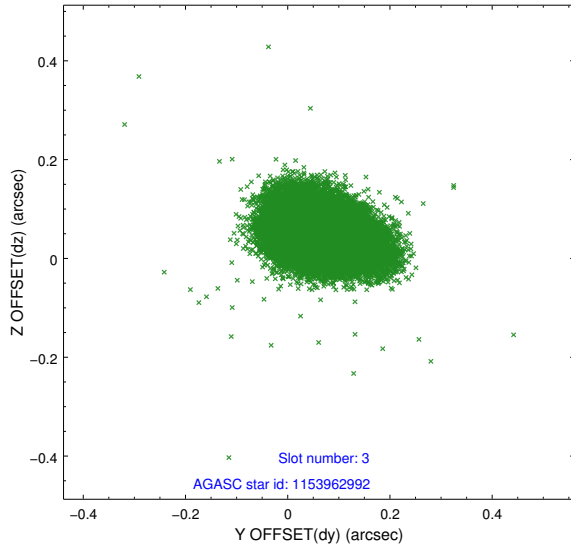
Slot Statistics

slot	status	id	mag	n_pts	med_dy	med_dz	dr1	dr2	ra	dec	mean_y	mean_z
0	FID	ACIS-I-1	7.02	11995	0.149	-0.088	0.017	0.027	0.000000	0.000000	924.96	-1000.17
1	FID	ACIS-I-5	7.02	11996	-0.306	0.123	0.012	0.021	0.000000	0.000000	-1823.61	897.53
2	FID	ACIS-I-6	7.03	11995	0.065	0.037	0.016	0.028	0.000000	0.000000	390.44	1541.93
3	GUIDE	1153962992	7.71	23984	0.060	0.048	0.070	0.117	316.142628	-58.933175	811.63	-243.44
4	GUIDE	1153965336	8.14	23978	-0.067	0.044	0.073	0.117	315.243619	-58.733759	971.12	-2058.82
5	GUIDE	1154095176	8.77	23959	0.102	0.032	0.088	0.148	316.791051	-59.049712	626.68	1016.55
6	GUIDE	1154097536	8.79	23960	-0.110	0.220	0.090	0.140	316.742212	-59.535633	2221.96	1739.87
7	GUIDE	1153964072	7.81	23988	0.010	-0.346	0.075	0.123	314.873316	-58.858808	1698.37	-2447.81

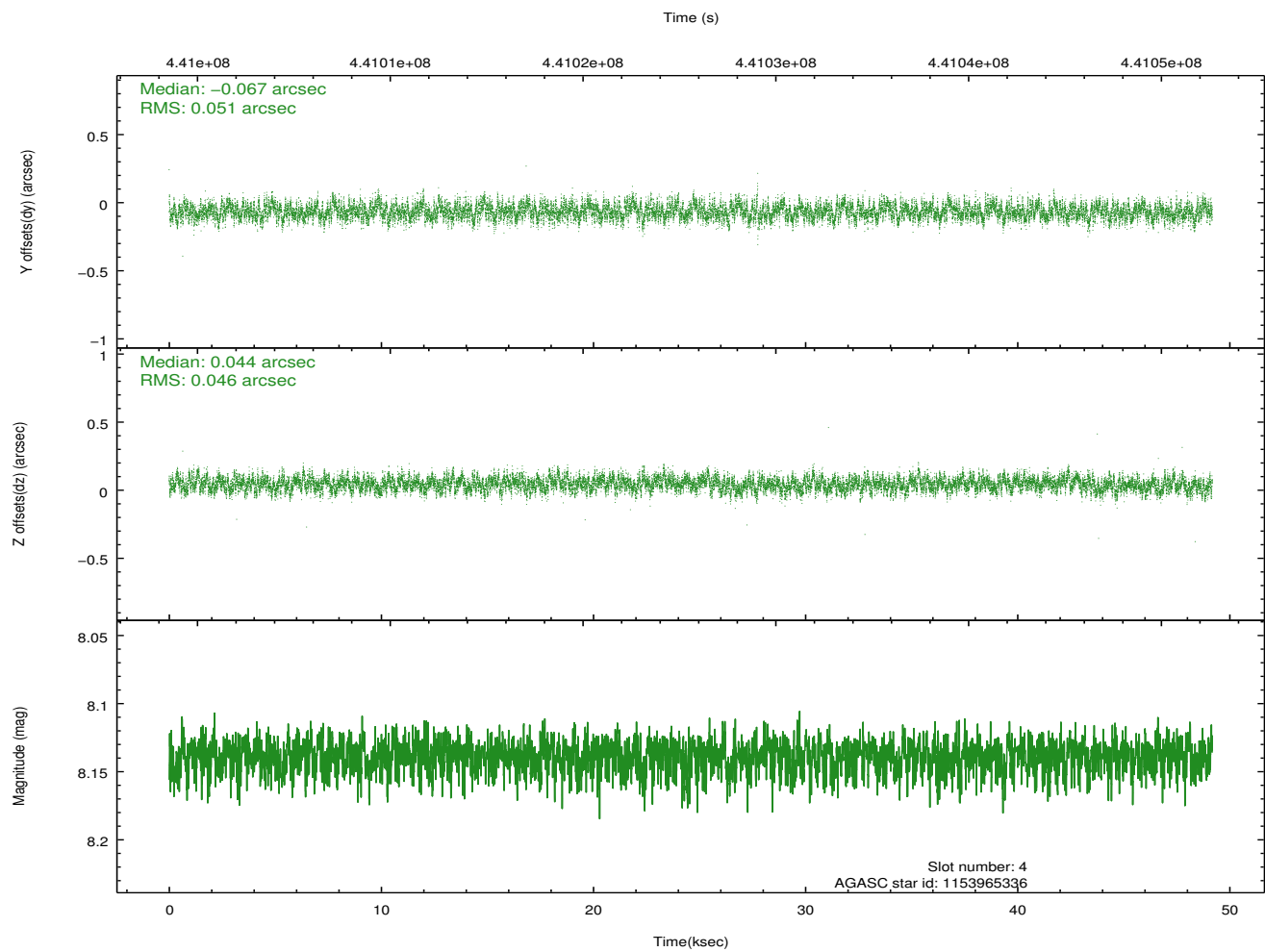
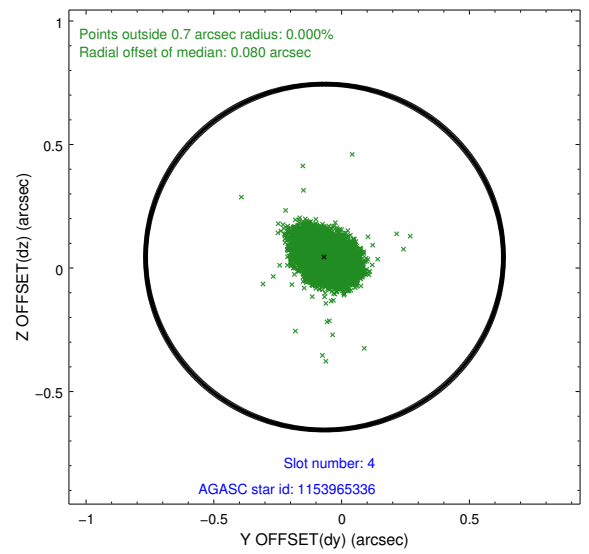
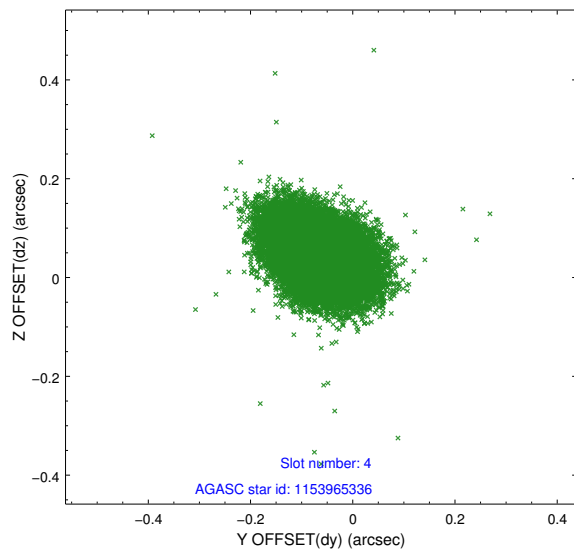
∞

2.4 Star Slots

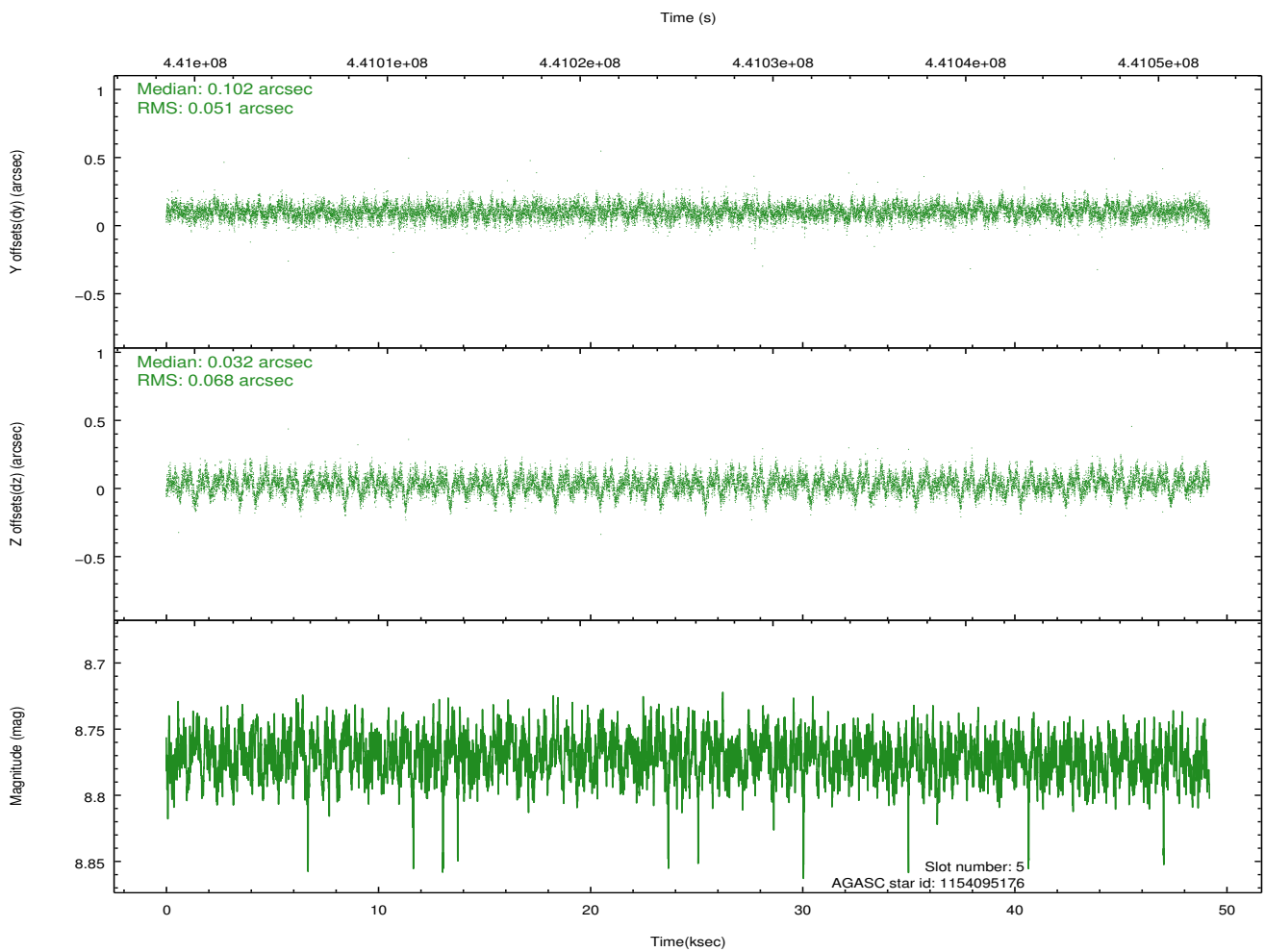
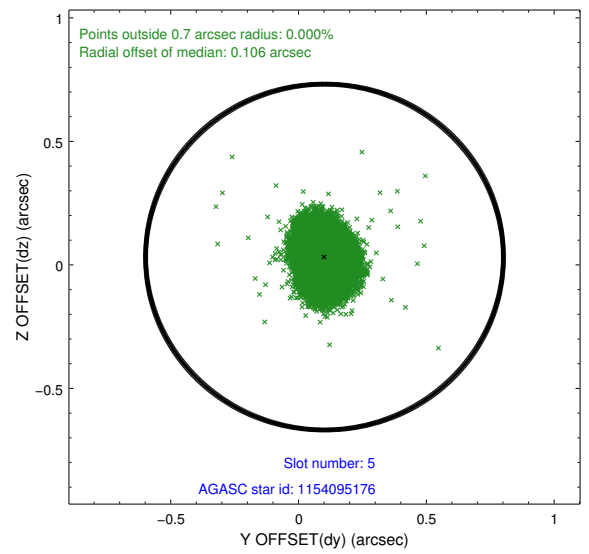
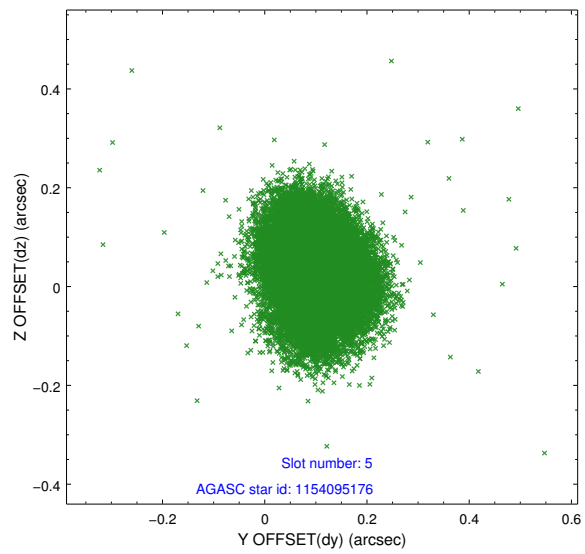
2.4.1 Slot 3



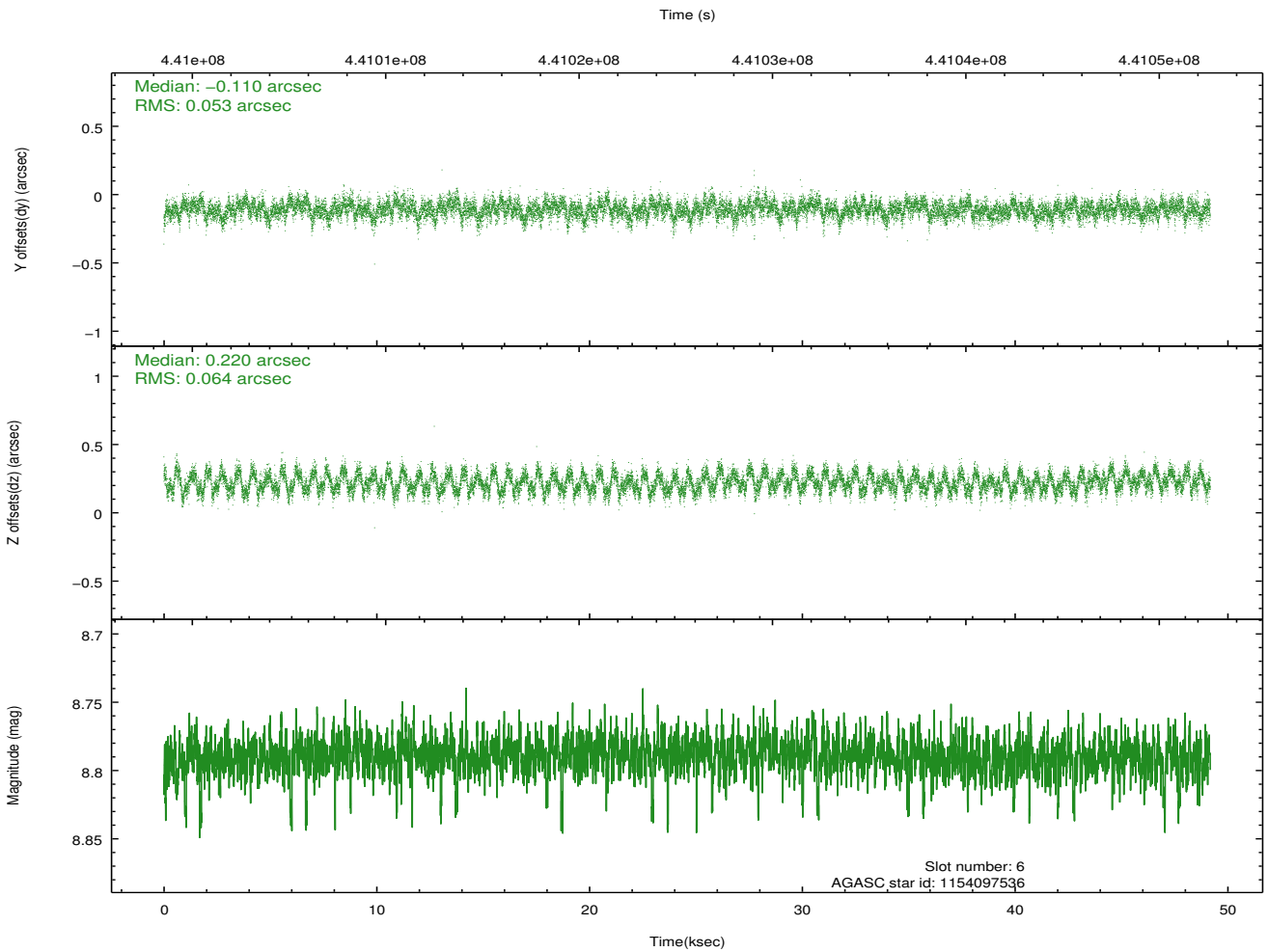
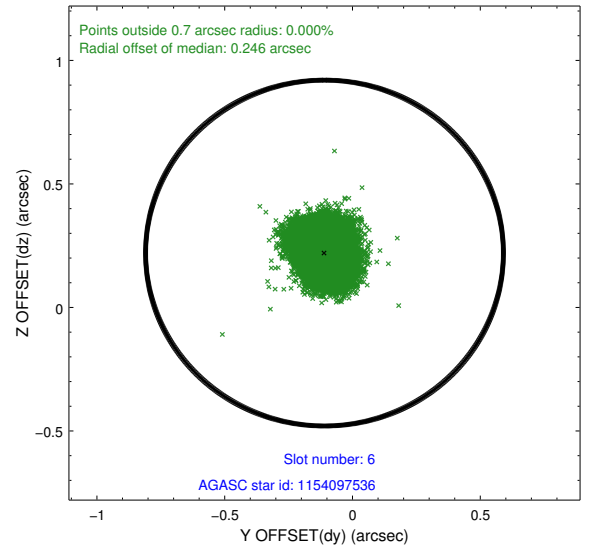
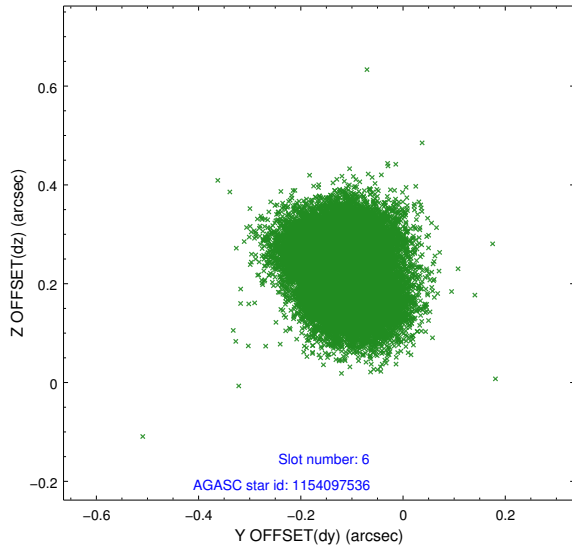
2.4.2 Slot 4



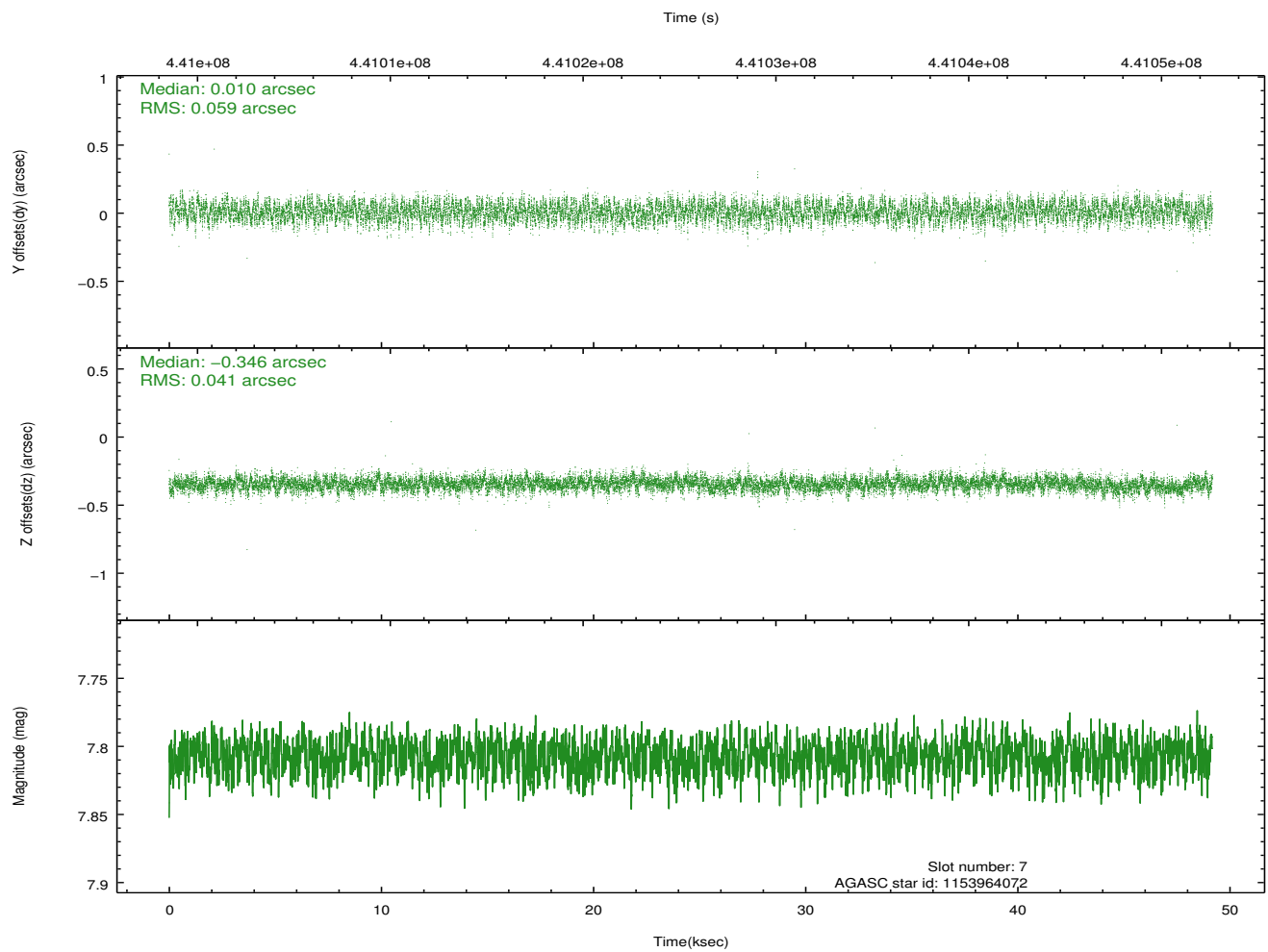
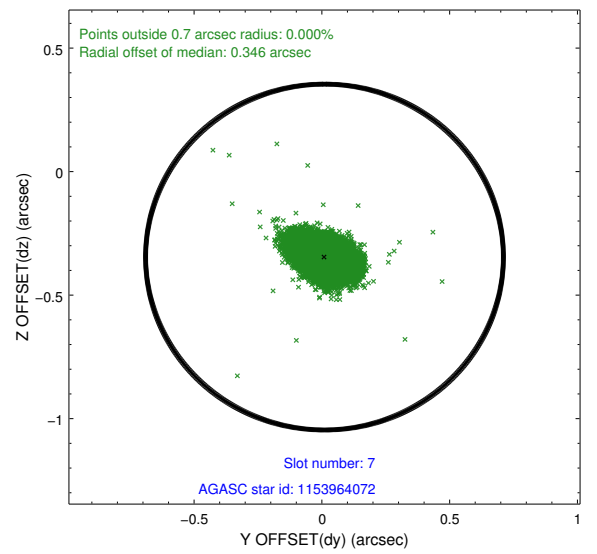
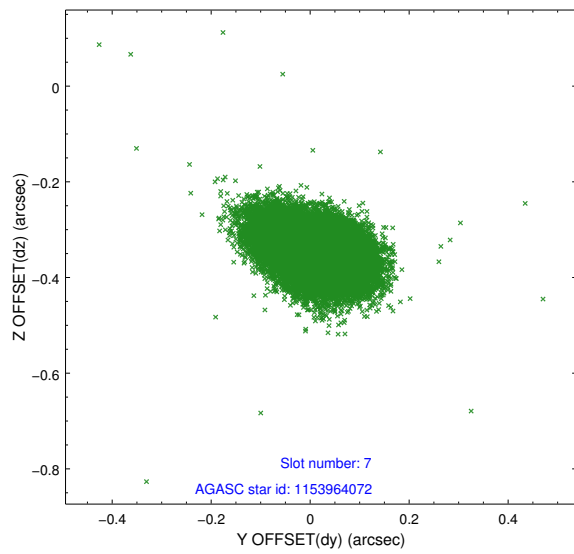
2.4.3 Slot 5



2.4.4 Slot 6

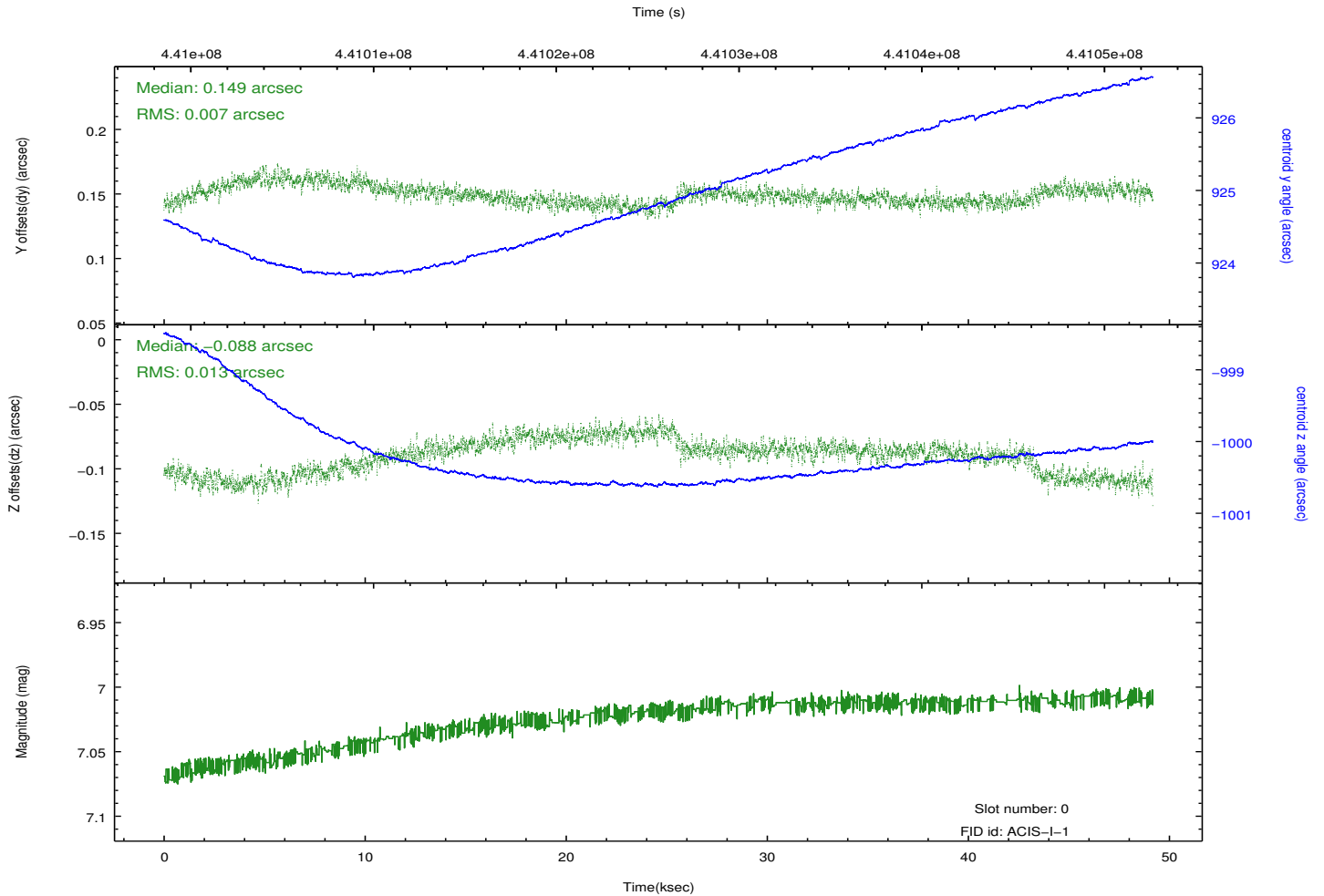
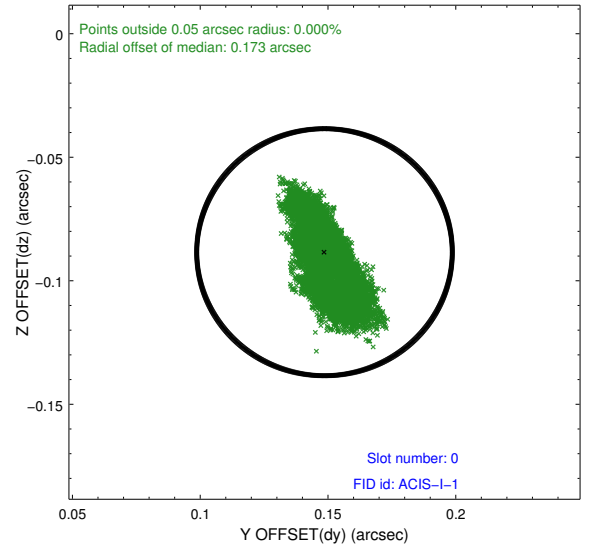
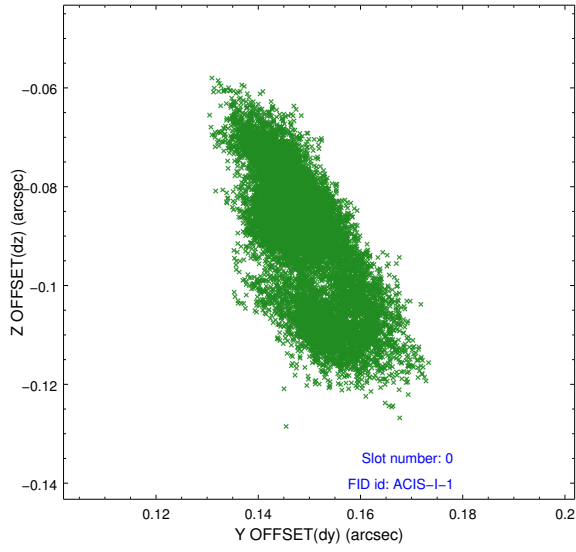


2.4.5 Slot 7

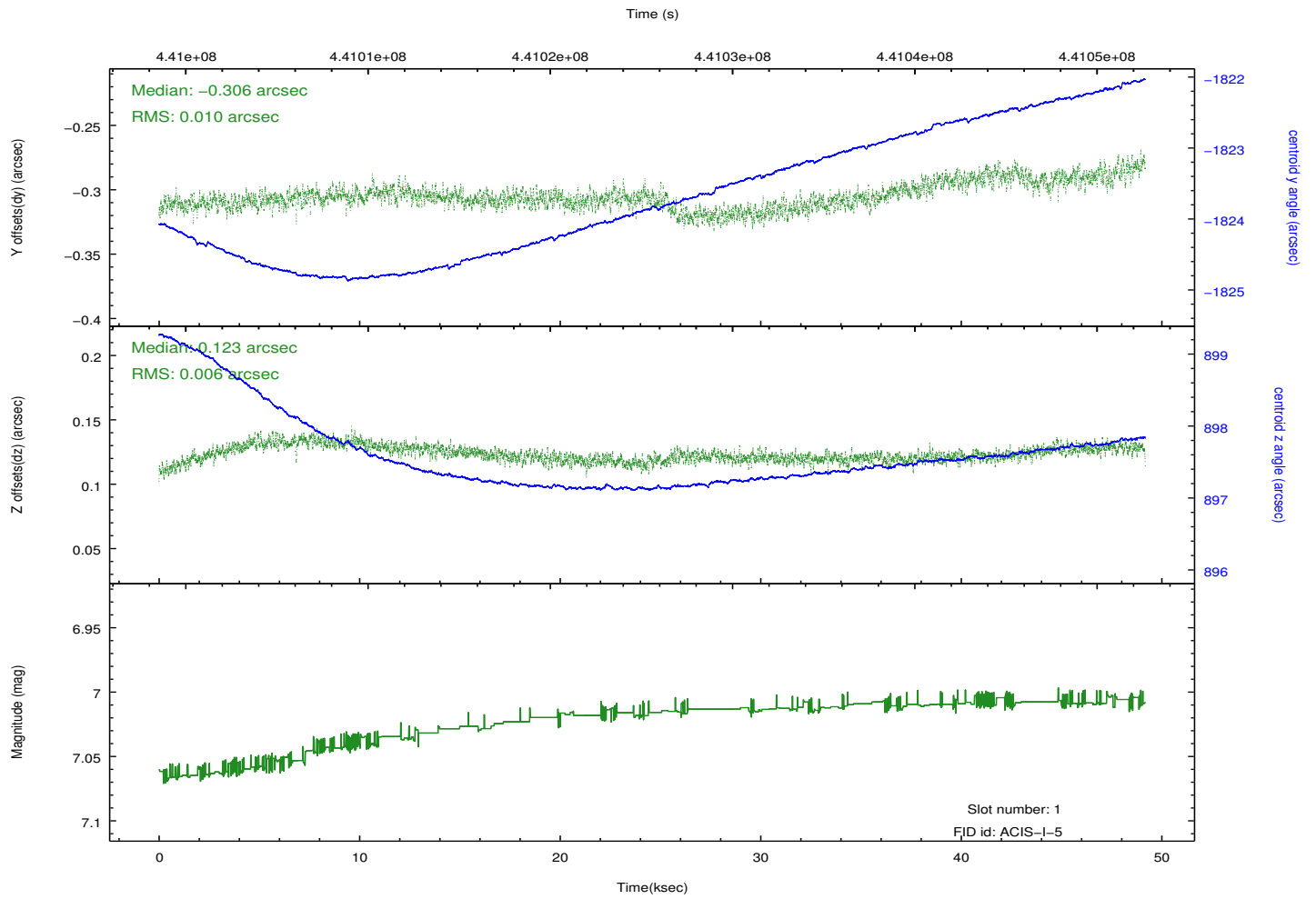
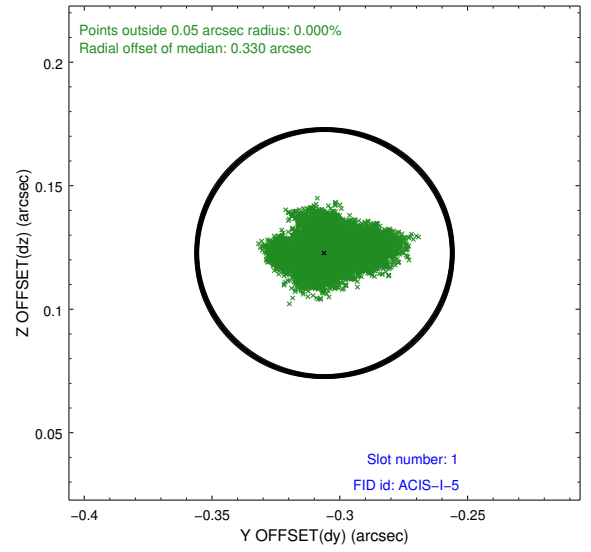
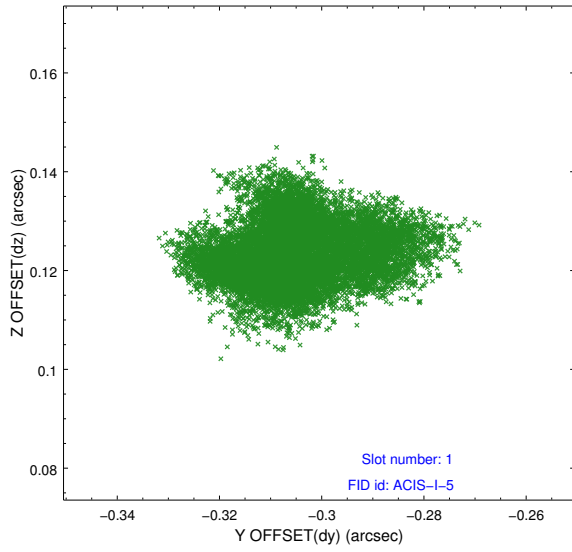


2.5 FID Slots

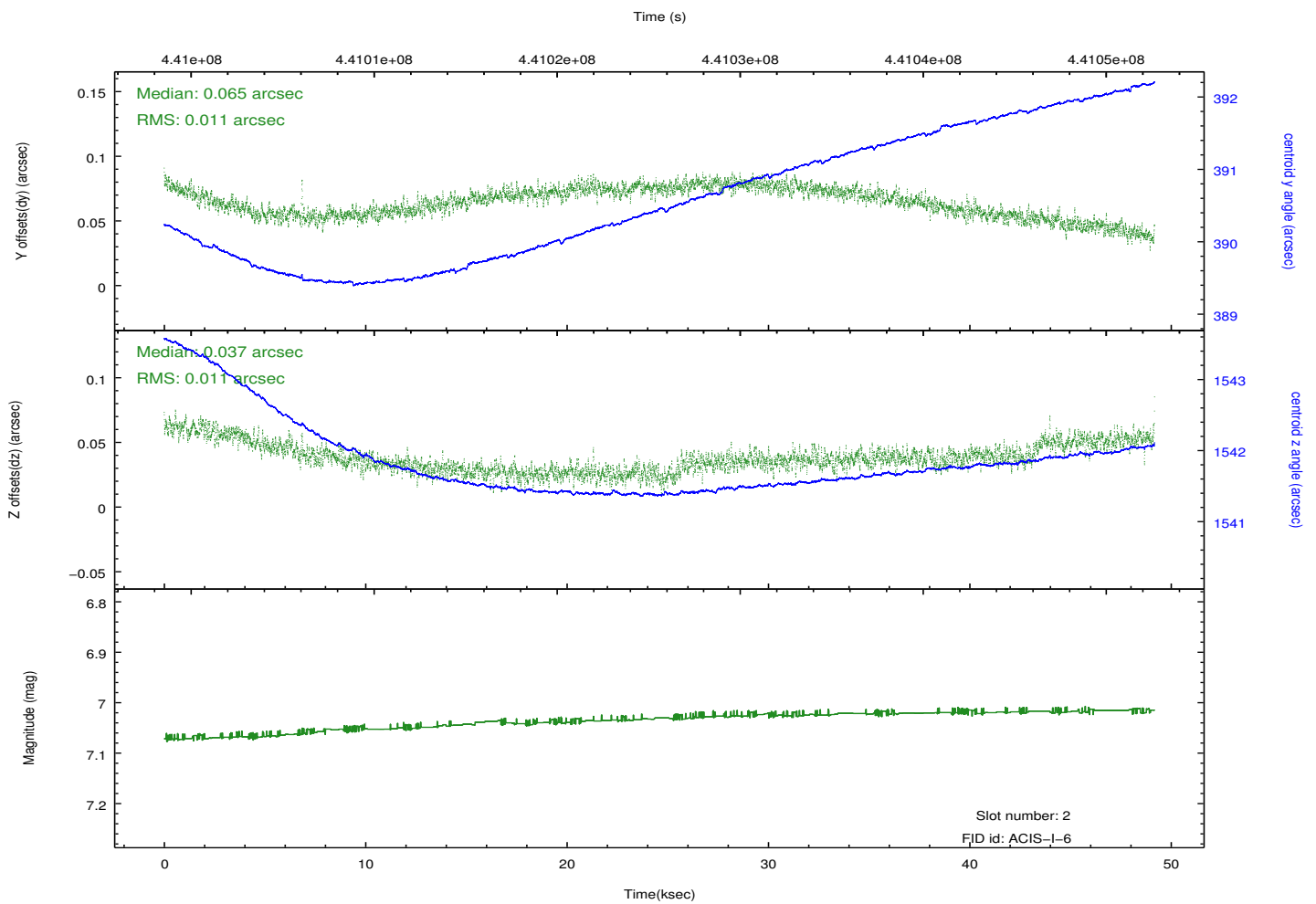
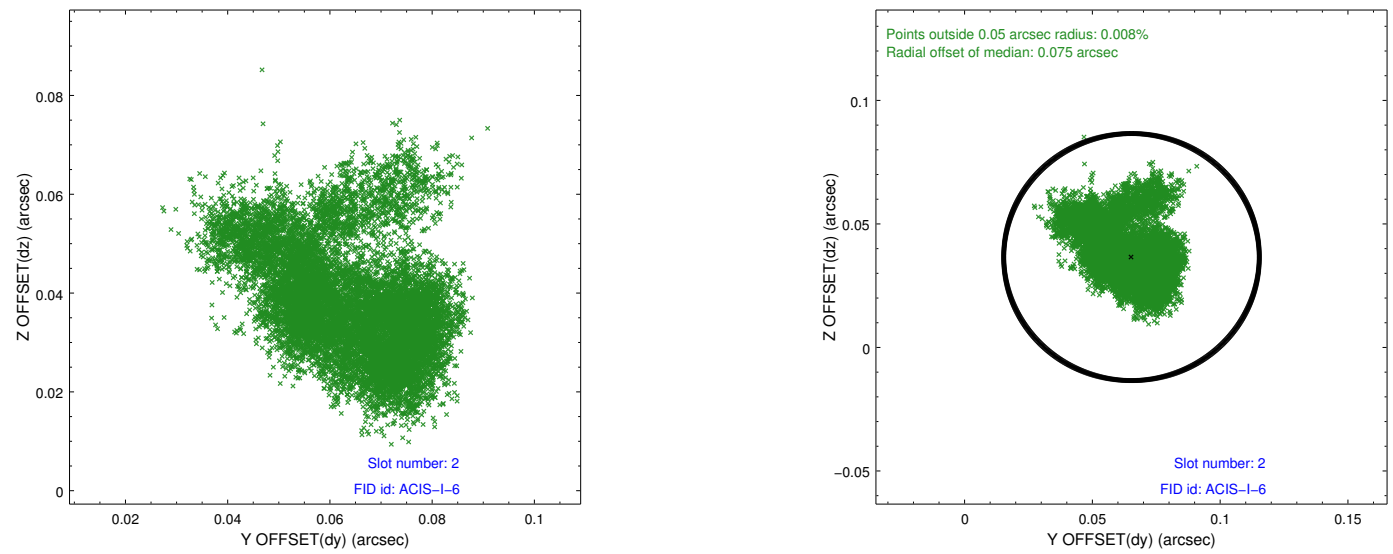
2.5.1 Slot 0



2.5.2 Slot 1



2.5.3 Slot 2



A Summary

A.1 Status

V&V Scientist	Jen Lauer
V&V Date (YYYY-MM-DD)	2012.02.29
V&V Edition	1
V&V Disposition and Status	OK
V&V Charge Time	48.764936598599

A.2 Comments