

# V&V Reference Report

## L2 ASCDS Version : 8.4.5

Observation 12219 - L2 Version 2  
Chandra X-Ray Center

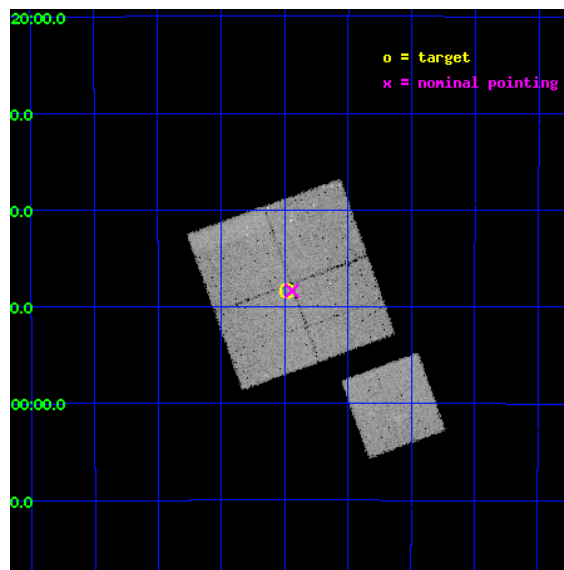
L2 Processing Date : Jun 28 2012

## Contents

<b>1</b>	<b>Front</b>	<b>2</b>
<b>2</b>	<b>OBI</b>	<b>3</b>
2.1	OBI . . . . .	3
2.1.1	Images . . . . .	3
2.1.2	Bias . . . . .	3
2.1.3	Parameters . . . . .	4
2.1.4	Events . . . . .	4
2.2	Compared Parameters . . . . .	5
2.3	Aspect . . . . .	6
2.4	Star Slots . . . . .	9
2.4.1	Slot 3 . . . . .	9
2.4.2	Slot 4 . . . . .	10
2.4.3	Slot 5 . . . . .	11
2.4.4	Slot 6 . . . . .	12
2.4.5	Slot 7 . . . . .	13
2.5	FID Slots . . . . .	14
2.5.1	Slot 0 . . . . .	14
2.5.2	Slot 1 . . . . .	15
2.5.3	Slot 2 . . . . .	16
<b>A</b>	<b>Summary</b>	<b>17</b>
A.1	Status . . . . .	17
A.2	Comments . . . . .	17

# 1 Front

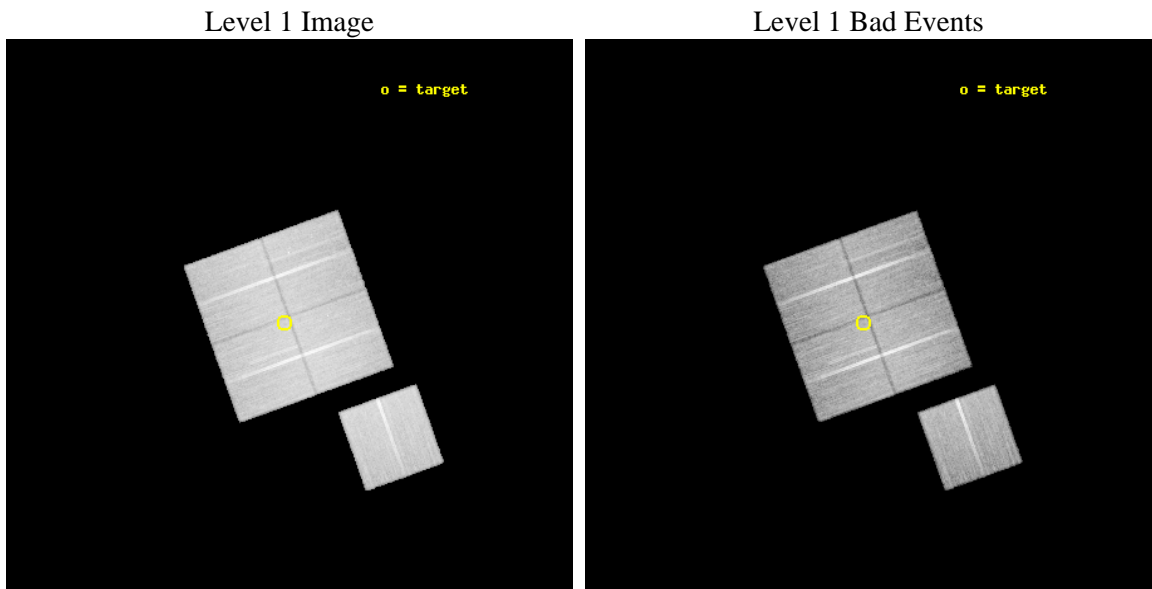
seq_num	900938	Sequence number
obs_id	12219	Observation id
title	The Chandra Deep Field-South Survey: An Ultradeep Chandra Legacy	P
observer	Dr. Harvey Tananbaum	Principal investigator
object	Chandra Deep Field-South	Source name
dtcycle	0	&#160
cycle	P	events from which exps? Prim/Second/Both
ra_targ	53.12	Observer's specified target RA [deg]
dec_targ	-27.806389	Observer's specified target Dec [deg]
ra_nom	53.11087243485	Nominal RA [deg]
dec_nom	-27.806024244432	Nominal Dec [deg]
roll_nom	160.2044213713	Nominal Roll [deg]
revision	2	Processing version of data
ontime	34106.014454484	Sum of GTIs [s]
livetime	33660.394267154	Livetime [s]
ontime0	34115.314235449	Sum of GTIs [s]
ontime1	34105.932304382	Sum of GTIs [s]
ontime2	34105.973274291	Sum of GTIs [s]
ontime3	34106.014454484	Sum of GTIs [s]
ontime6	34115.273195446	Sum of GTIs [s]
l2events	117321	Number of level 2 events



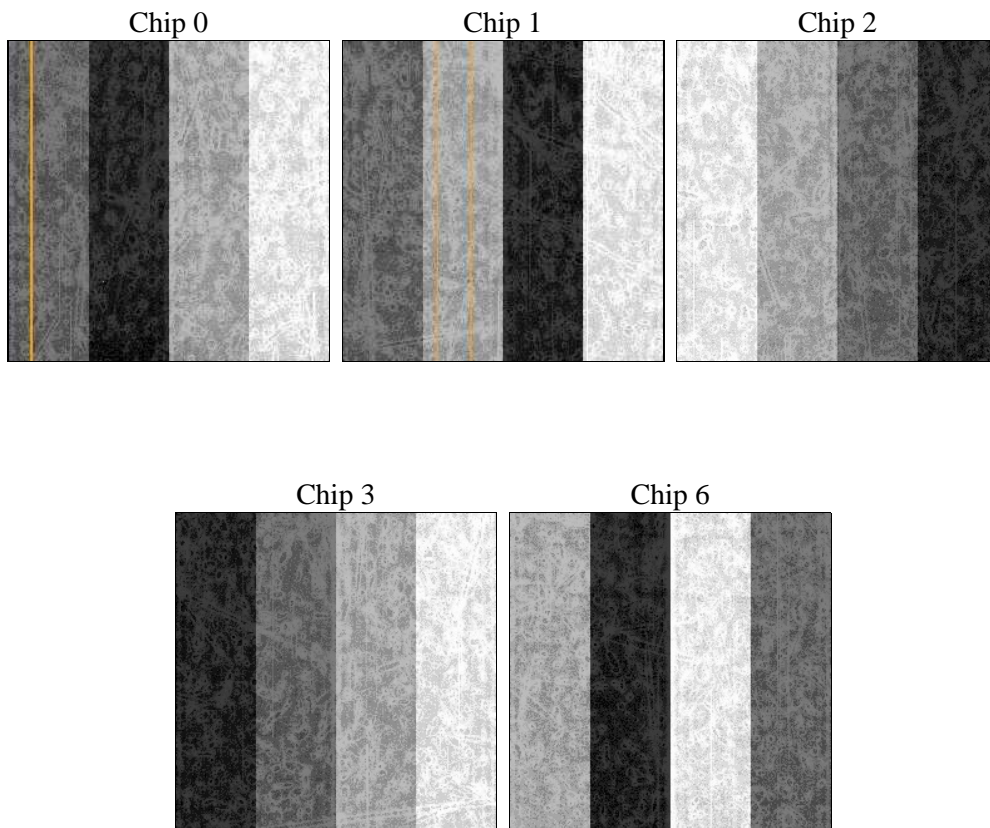
## 2 OBI

### 2.1 OBI

#### 2.1.1 Images



#### 2.1.2 Bias



### 2.1.3 Parameters

obi_num	1	Obi number	sched_exp_time	34069.000000	[s] Scheduled observation exposure time
ascdsver	8.4.5	Processing system revision	ontime	34106.014454484	Sum of GTIs [s]
caldbver	4.5.0	&#160	ontime0	34115.314235449	Sum of GTIs [s]
date	2012-06-28T04:56:21	Date and time of file creation	ontime1	34105.932304382	Sum of GTIs [s]
revision	2	Processing version of data	ontime2	34105.973274291	Sum of GTIs [s]
			ontime3	34106.014454484	Sum of GTIs [s]
			ontime6	34115.273195446	Sum of GTIs [s]
			l1events	1254599	Number of level 1 events

### 2.1.4 Events

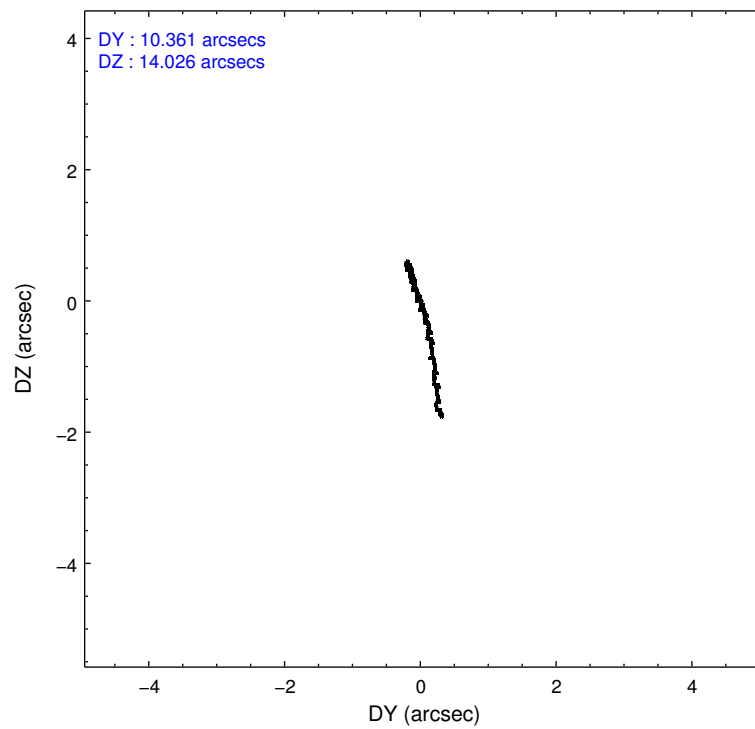
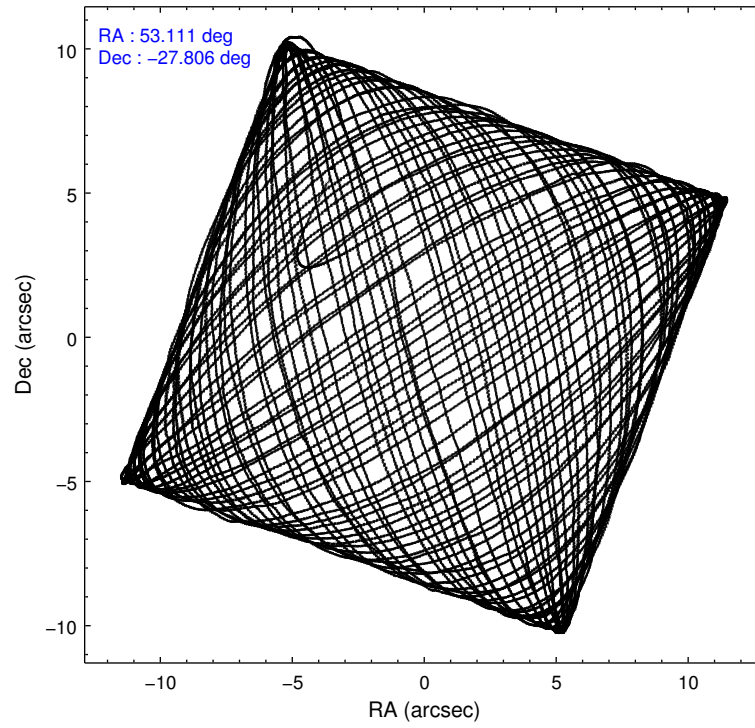
	ccd 0	ccd 1	ccd 2	ccd 3	ccd 6
level 1 events	236563	239834	264236	257333	256633
rejected events	208188	209244	237039	231884	228073
rejected %	88%	87%	89%	90%	88%

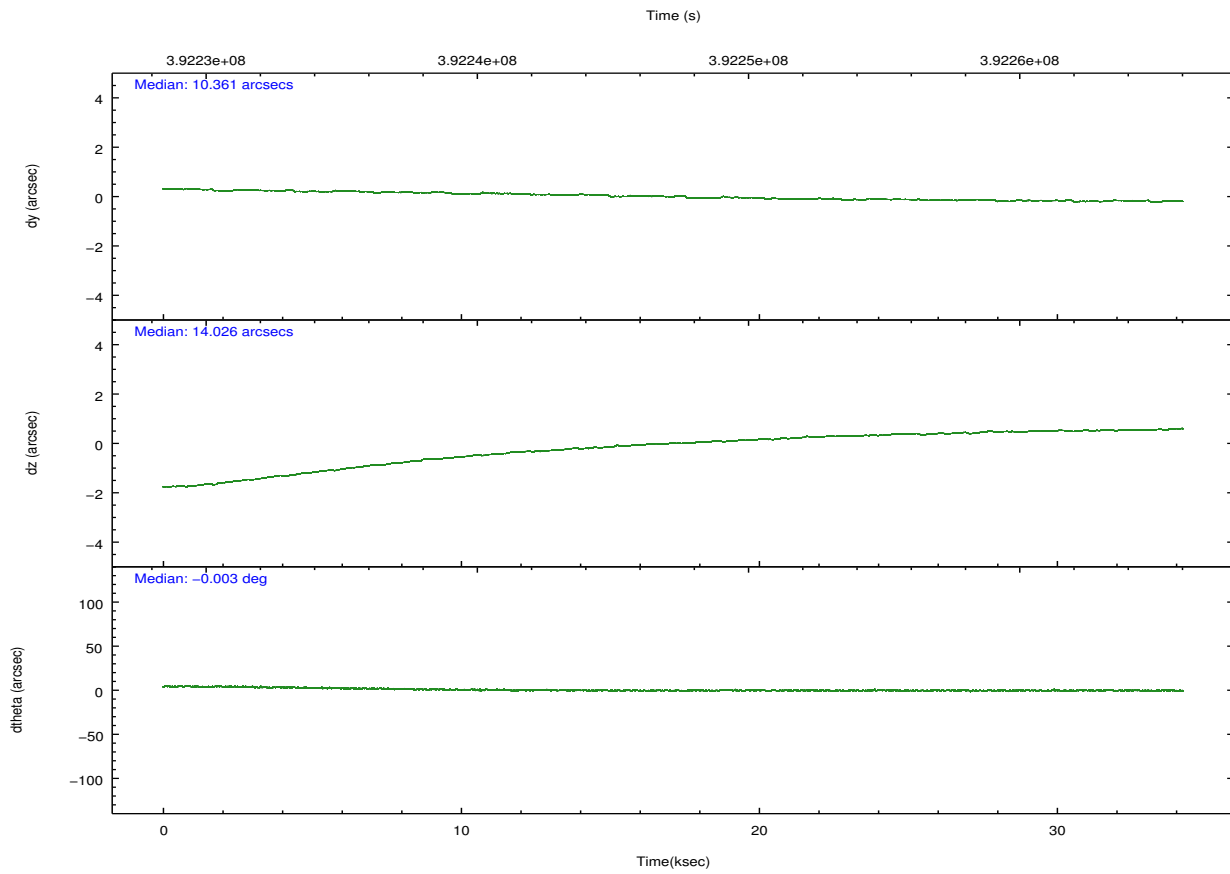
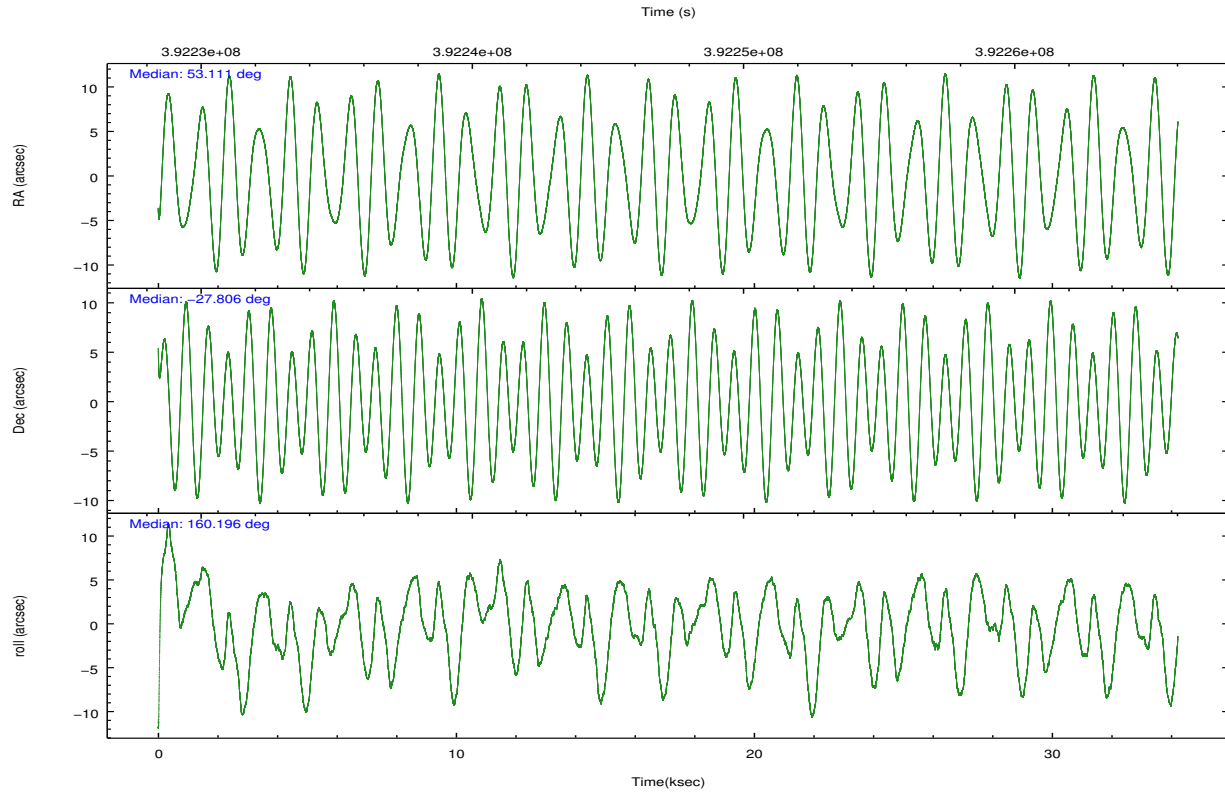
	ccd 0	ccd 1	ccd 2	ccd 3	ccd 6
grade 0 events	10347	10839	9730	8812	9810
	4%	4%	3%	3%	3%
grade 1 events	157	142	138	165	132
	0%	0%	0%	0%	0%
grade 2 events	6716	7204	6586	5755	6368
	2%	3%	2%	2%	2%
grade 3 events	3009	3134	2872	2847	3090
	1%	1%	1%	1%	1%
grade 4 events	2773	3153	2929	2770	2971
	1%	1%	1%	1%	1%
grade 5 events	10305	10927	9678	11603	11435
	4%	4%	3%	4%	4%
grade 6 events	5537	6265	5083	5273	6325
	2%	2%	1%	2%	2%
grade 7 events	197719	198170	227220	220108	216502
	83%	82%	85%	85%	84%

## 2.2 Compared Parameters

Parameter	Planned	Actual	Parameter	Planned	Actual
Instrument	ACIS	ACIS	Obspar format version number	7	7
Detector	ACIS-01236	ACIS-01236	Obspar file type	PREDICTED	ACTUAL
Grating	NONE	NONE	Obspar update status	NONE	UPDATED
Data mode	VFAINT	VFAINT	CCD I0 on	Y	Y
Observation mode	POINTING	POINTING	CCD I1 on	Y	Y
[deg] Pointing RA	53.141450	53.11087243485007	CCD I2 on	Y	Y
[deg] Pointing Dec	-27.801055	-27.80602424443151	CCD I3 on	Y	Y
[deg] Pointing Roll	160.010008	160.2044213712981	CCD S0 on	N	N
[mm] SIM focus pos	-0.782348	-0.7809083437167272	CCD S1 on	N	N
[mm] SIM defocus	0	0.001439871863259334	CCD S2 on	O1	Y
[mm] SIM translation stage pos	-233.592463	-233.5874344608287	CCD S3 on	N	N
[mm] SIM translation stage offset	0	-0.005018542100998502	CCD S4 on	N	N
[s] Observation start time (MET)	392230257.184000	392228980.66141	CCD S5 on	N	N
Observation start date	2010-06-06T16:49:51	2010-06-06T16:29:40	Number of optional ACIS chips dropped	0	0
[s] Observation end time (MET)	392264326.184000	392265177.51326	On-chip summing requested	N	N
Observation end date	2010-06-07T02:17:40	2010-06-07T02:32:57	Subarray requested	NONE	NONE
Read mode	TIMED	TIMED	Alternating exposures requested	N	N
			[s] Primary exposure time	0.000000	3.1

## 2.3 Aspect



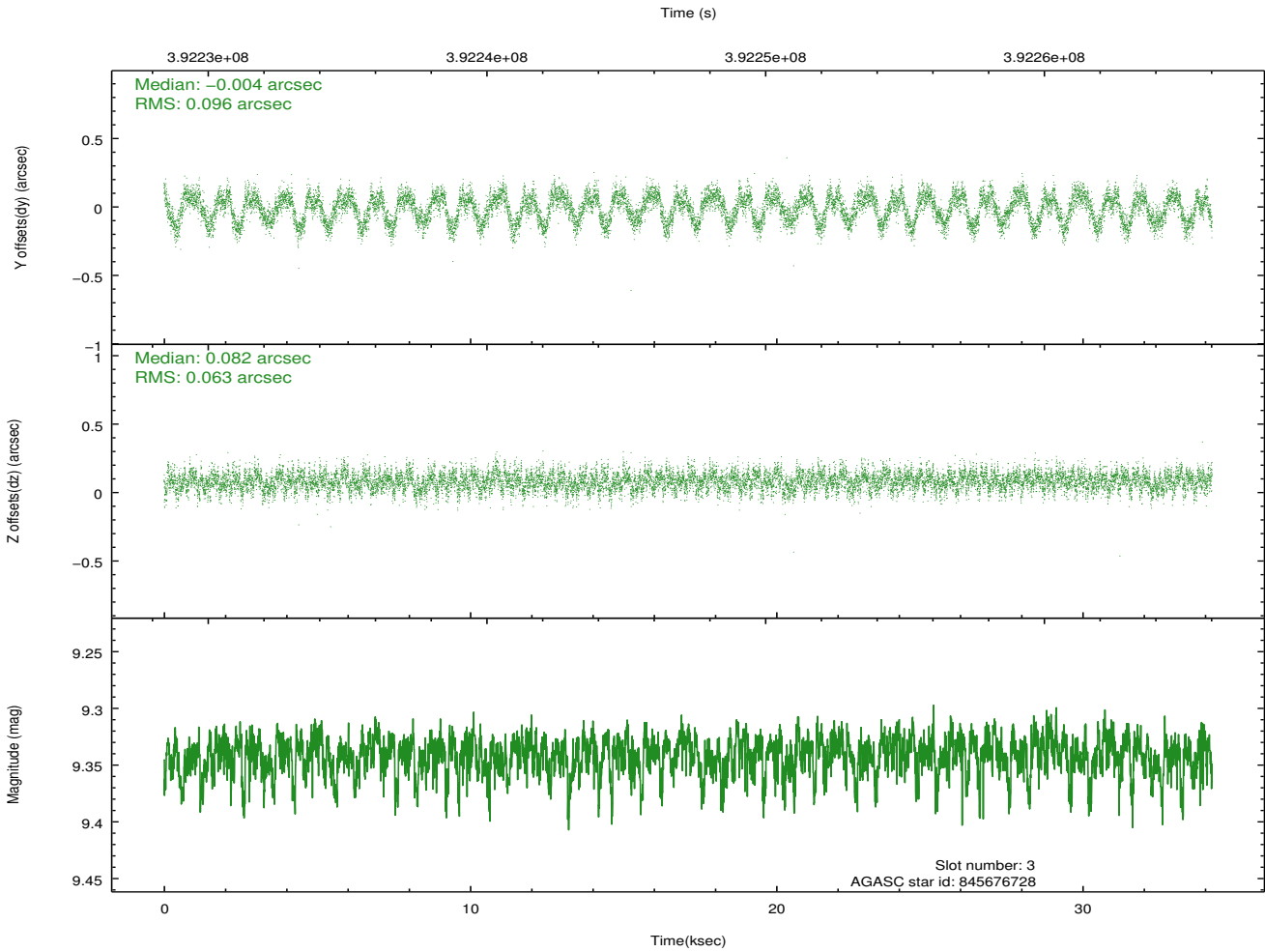
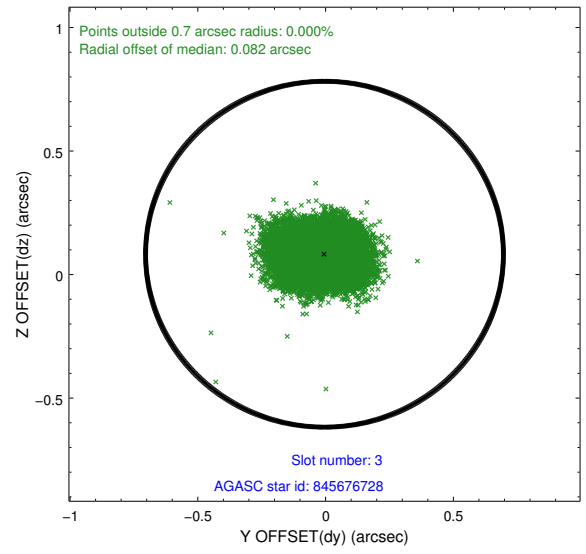
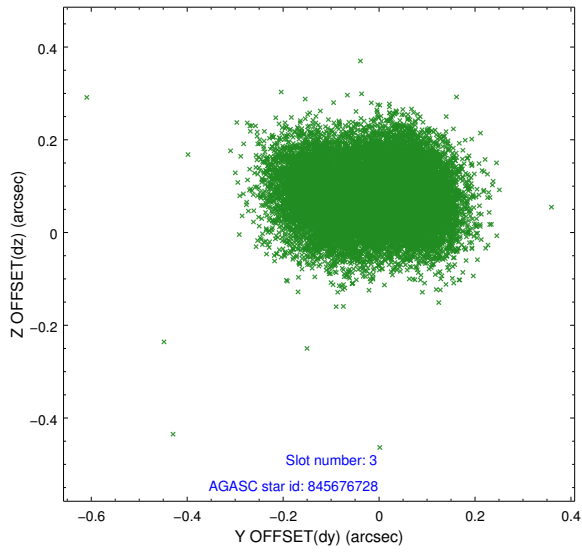


### Slot Statistics

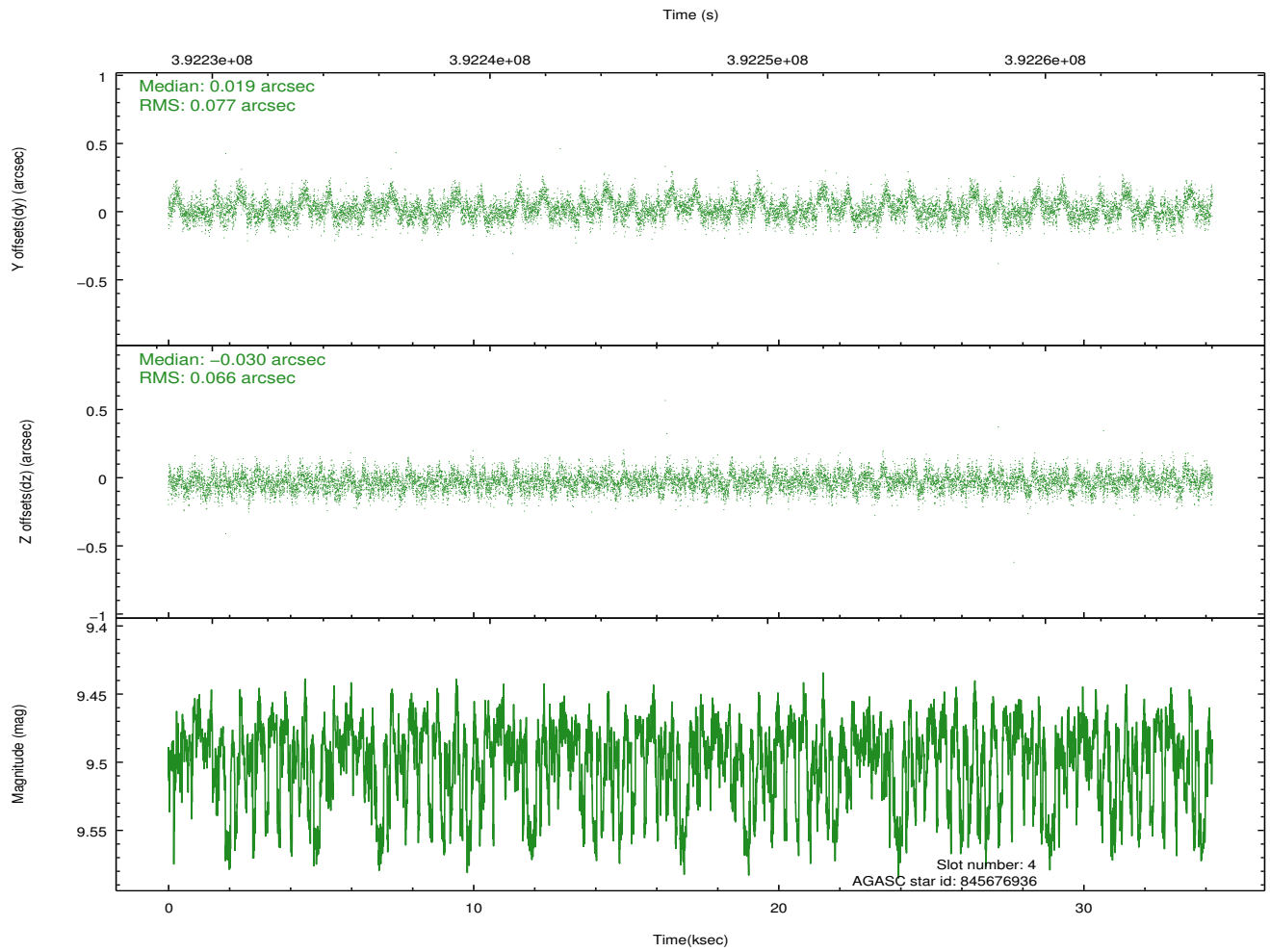
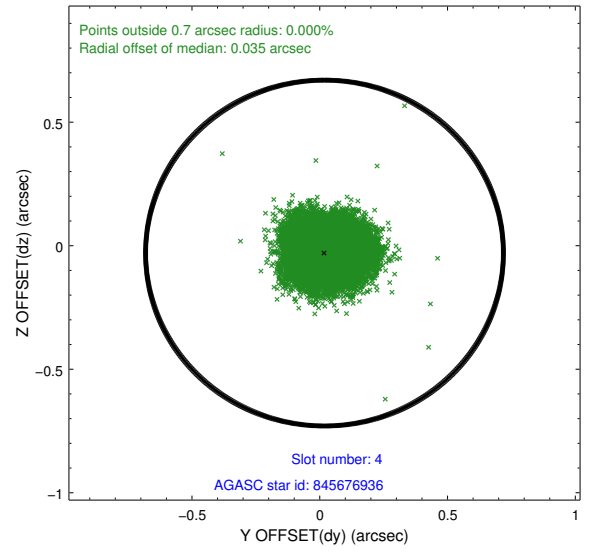
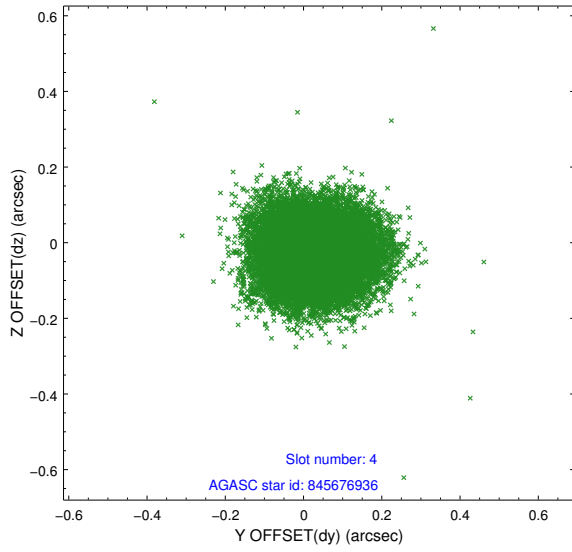
slot	status	id	mag	n_pts	med_dy	med_dz	dr1	dr2	ra	dec	mean_y	mean_z
0	FID	ACIS-I-1	7.07	8347	0.037	0.012	0.012	0.030	0.000000	0.000000	929.26	-837.36
1	FID	ACIS-I-5	7.06	8346	-0.191	0.052	0.013	0.023	0.000000	0.000000	-1819.08	1060.12
2	FID	ACIS-I-6	7.07	8347	0.065	0.006	0.022	0.032	0.000000	0.000000	394.74	1704.65
3	GUIDE	845676728	9.34	16670	-0.004	0.082	0.125	0.192	52.877179	-27.664318	959.96	-173.08
4	GUIDE	845676936	9.49	16649	0.019	-0.030	0.108	0.174	52.843773	-27.880153	792.25	592.68
5	GUIDE	845807880	8.81	16690	0.090	-0.181	0.094	0.176	53.382027	-27.886093	-824.03	26.82
6	GUIDE	845417688	9.96	16628	-0.041	0.287	0.158	0.250	54.025245	-27.354040	-2108.67	-2468.56
7	GUIDE	845816224	10.22	16666	-0.065	-0.158	0.162	0.283	53.578992	-28.631005	-2322.05	2337.33

## 2.4 Star Slots

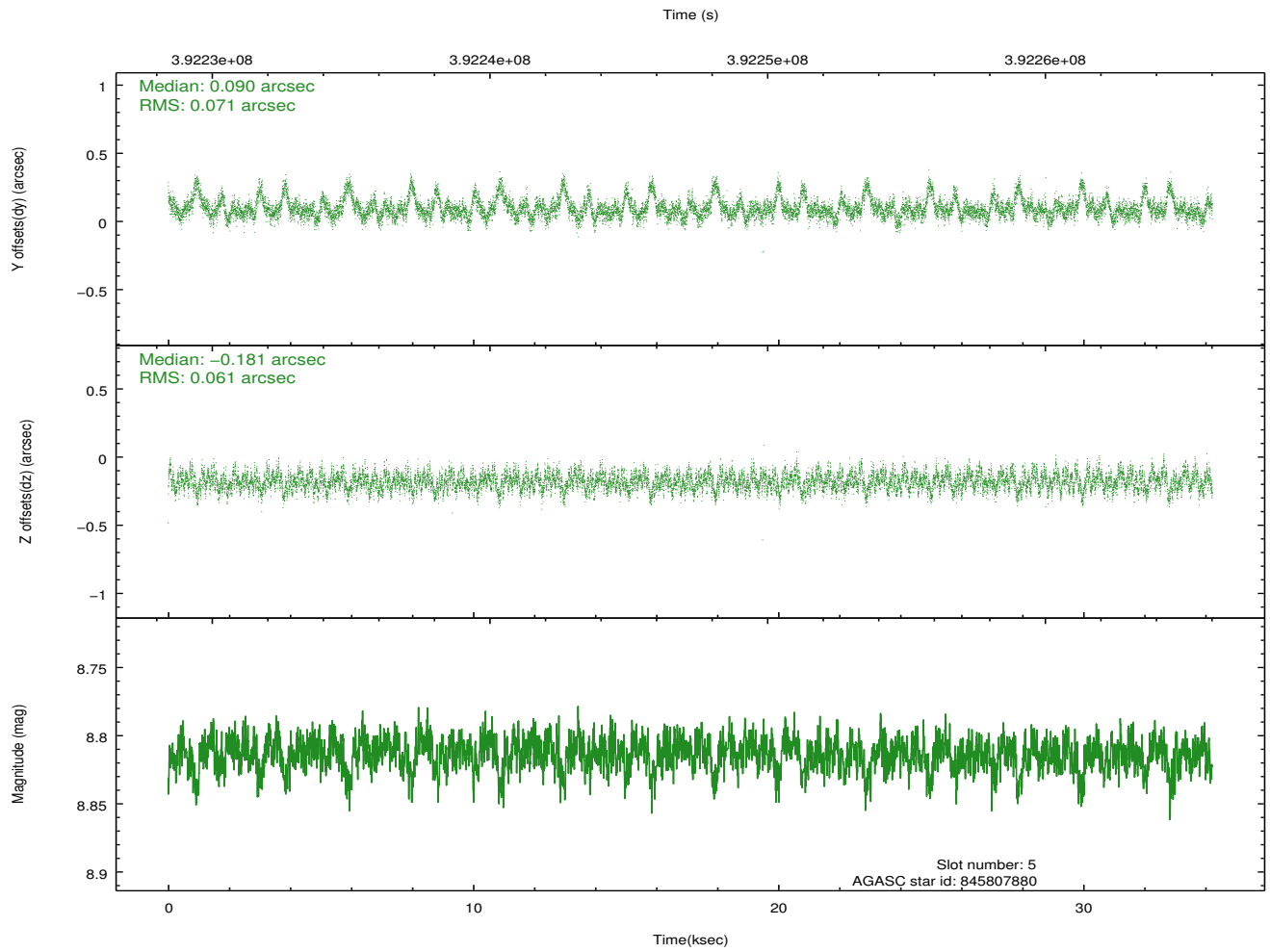
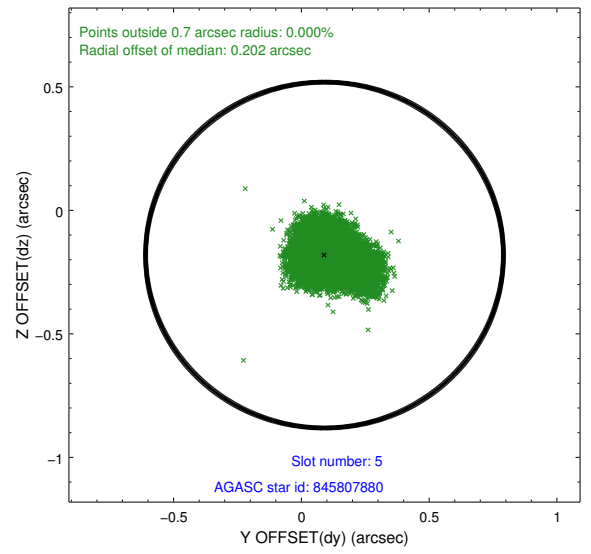
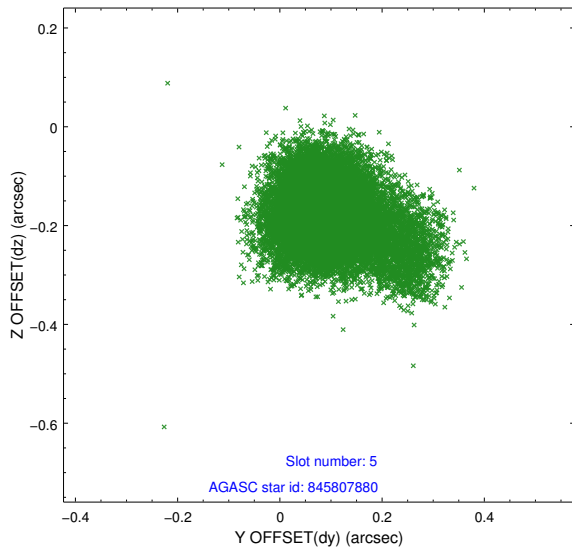
### 2.4.1 Slot 3



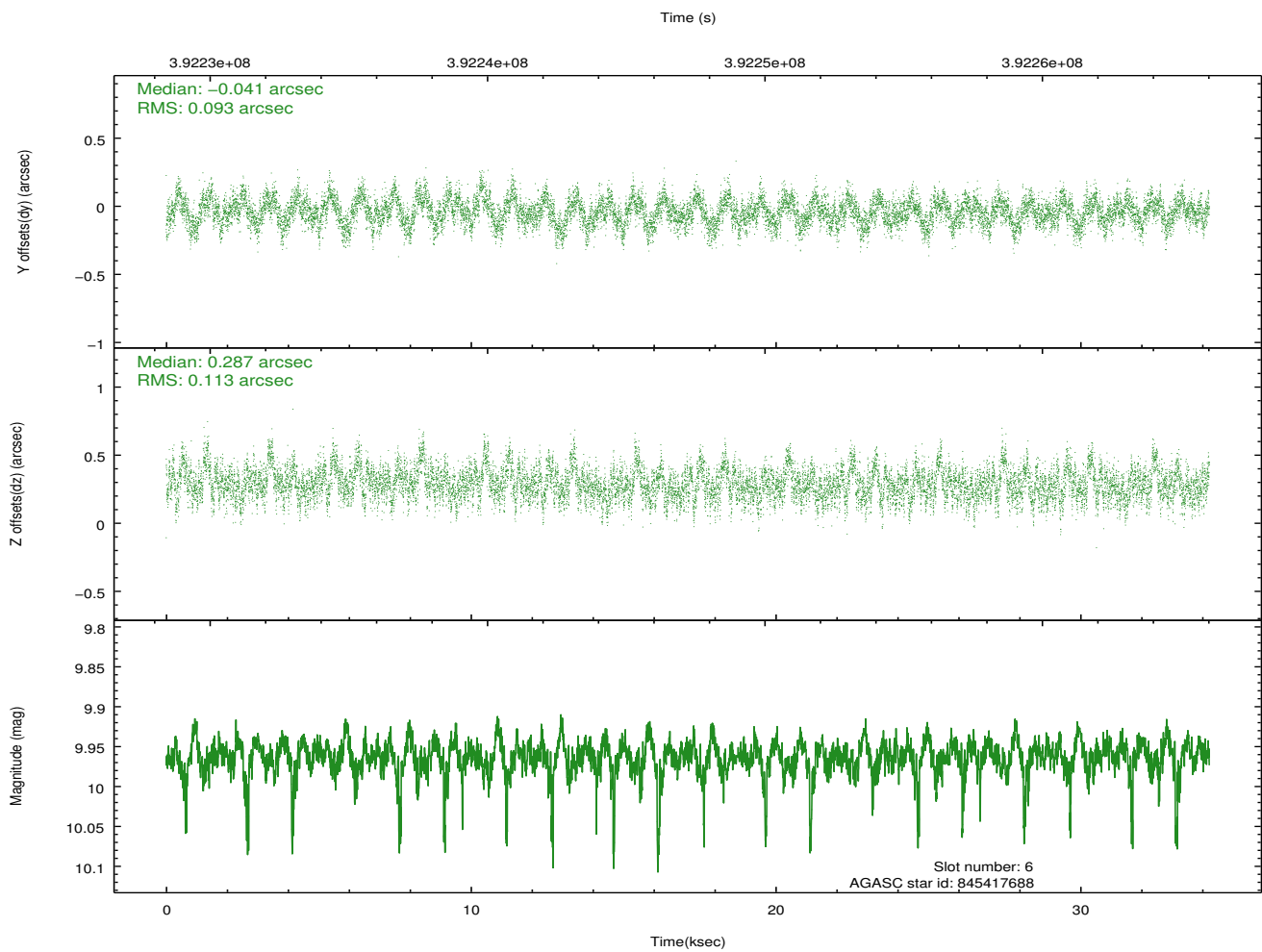
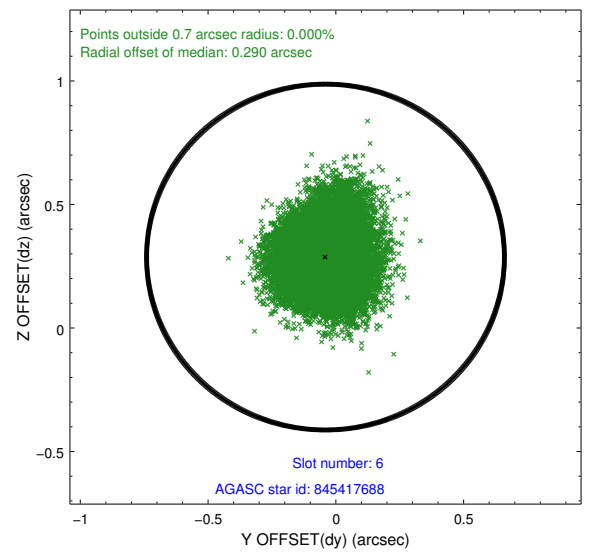
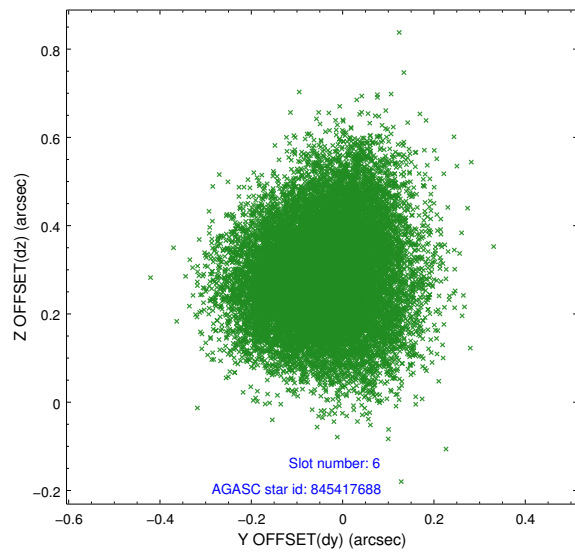
## 2.4.2 Slot 4



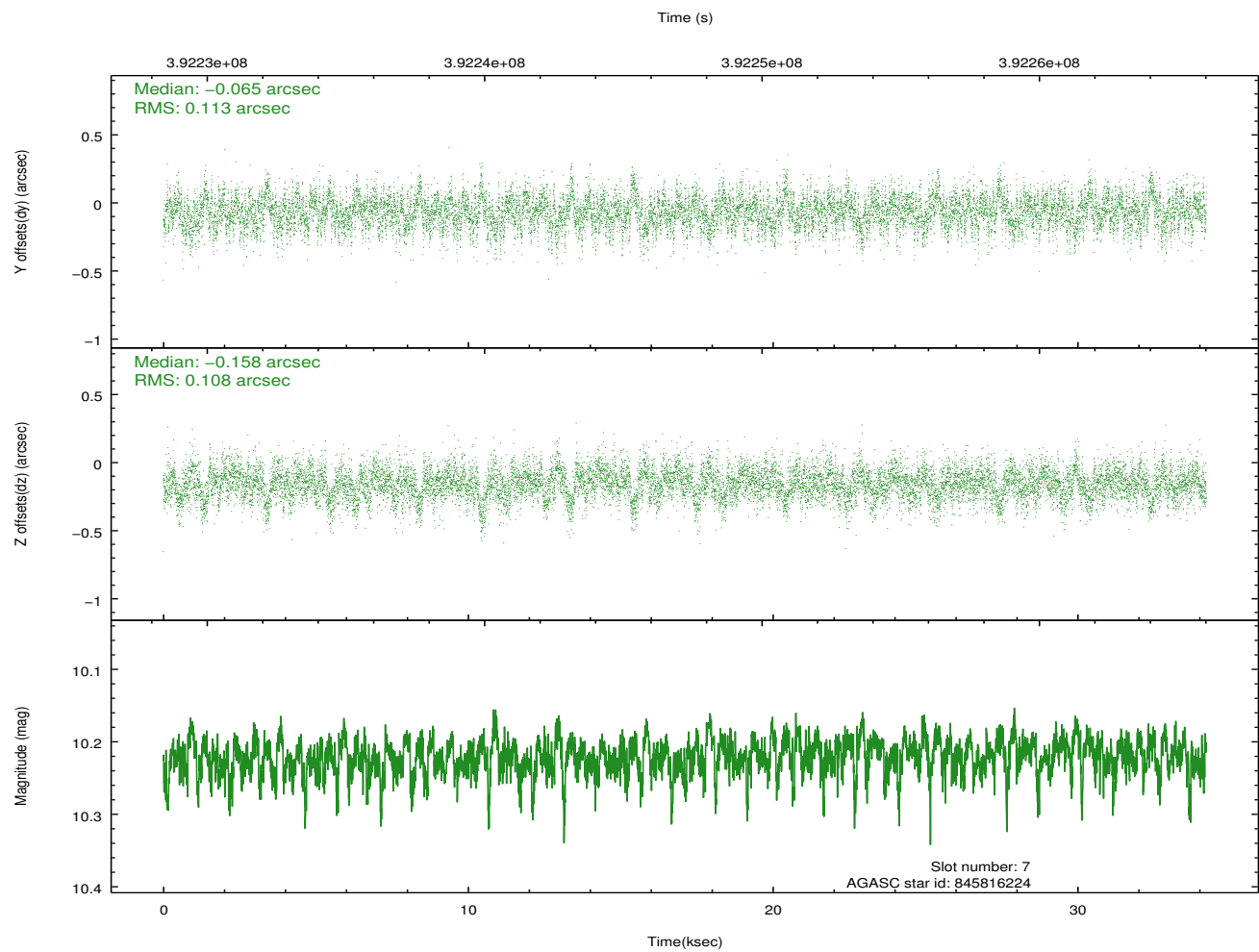
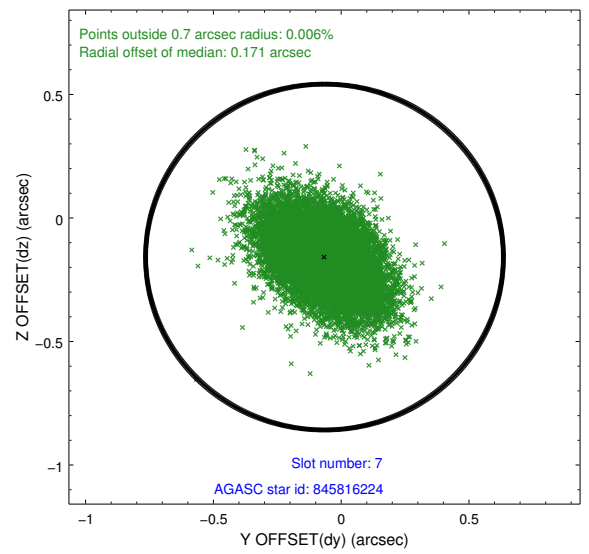
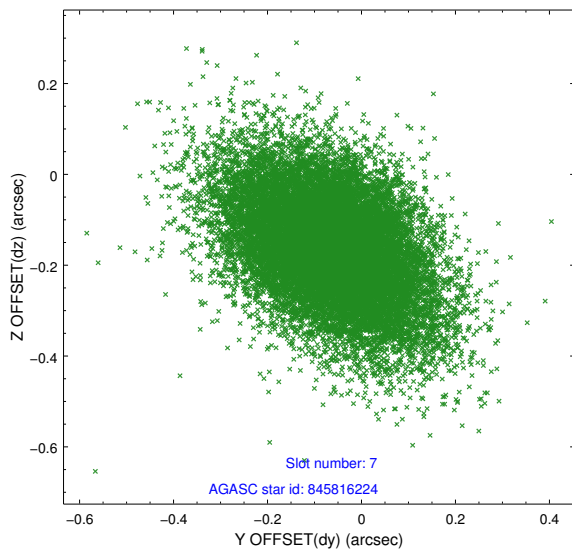
### 2.4.3 Slot 5



## 2.4.4 Slot 6

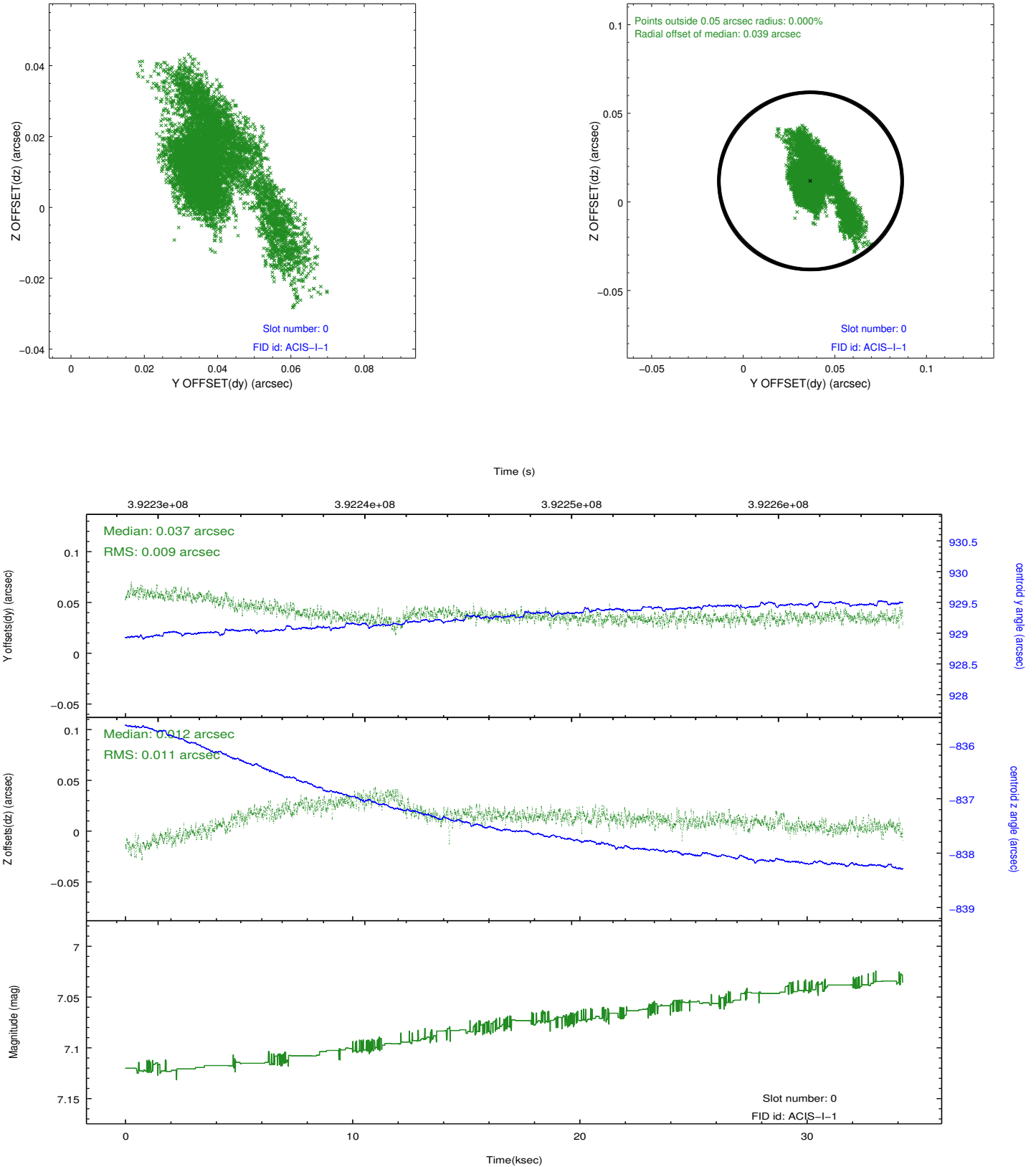


## 2.4.5 Slot 7

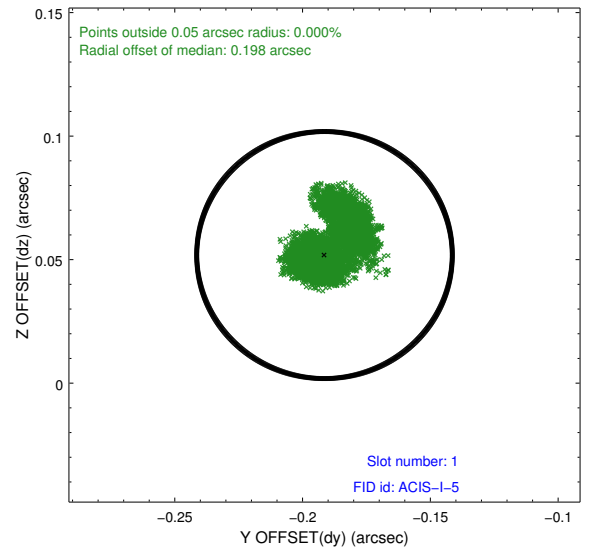
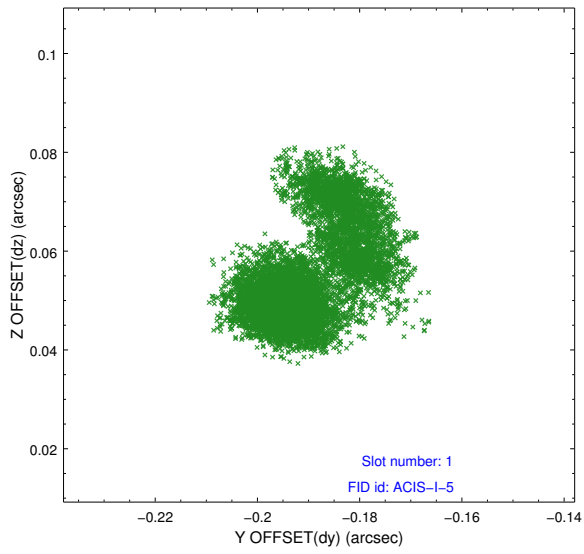


## 2.5 FID Slots

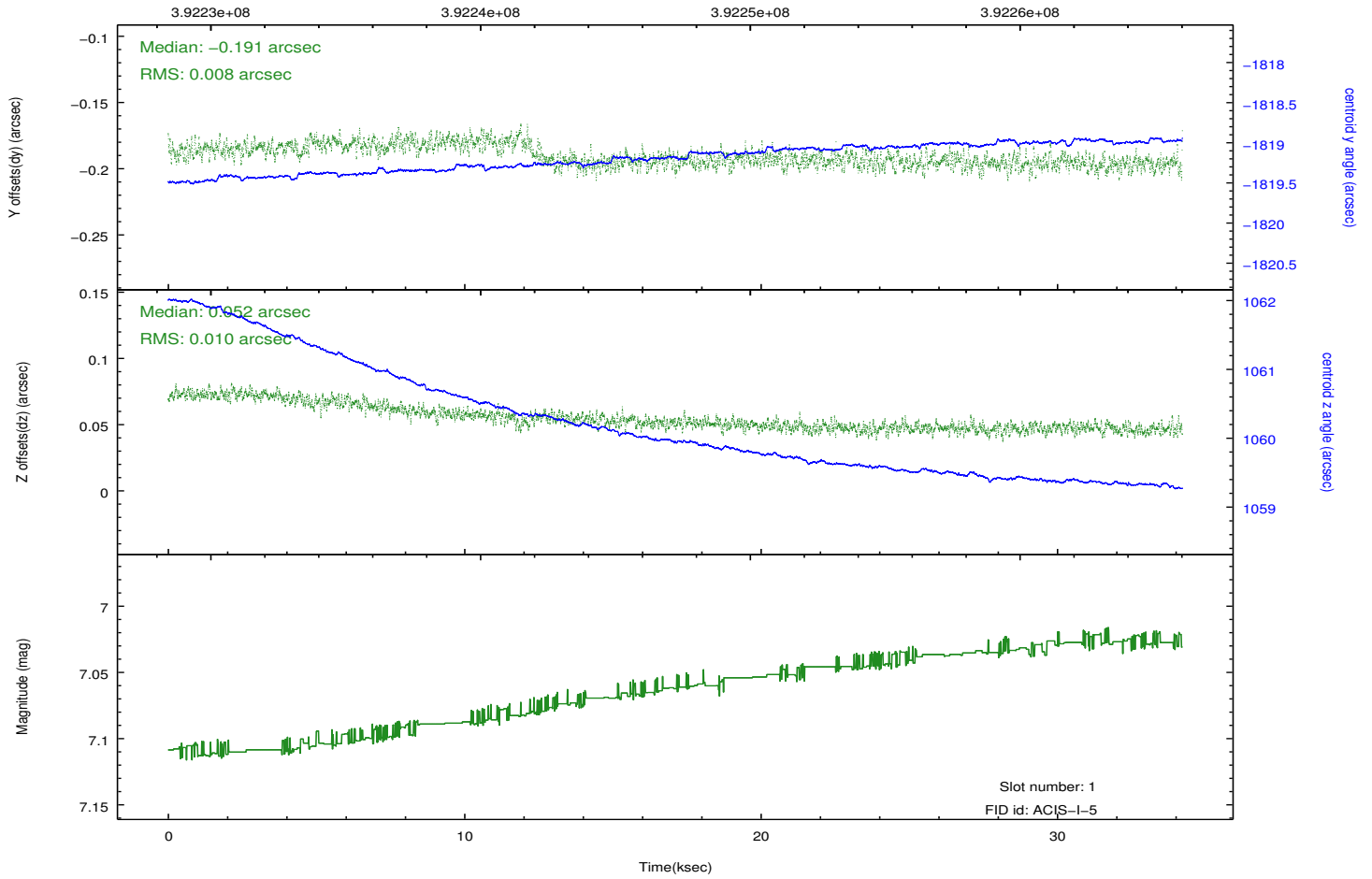
### 2.5.1 Slot 0



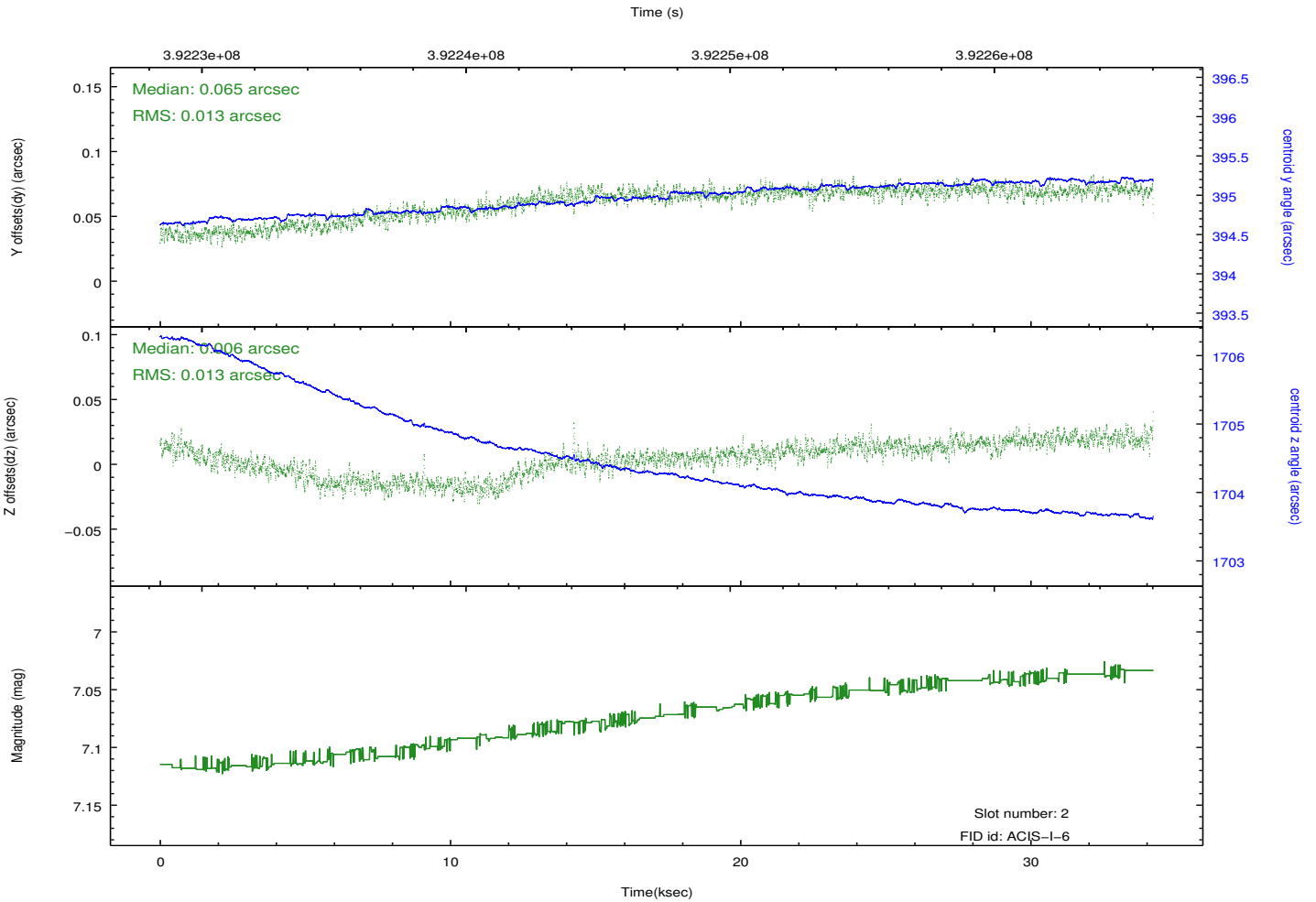
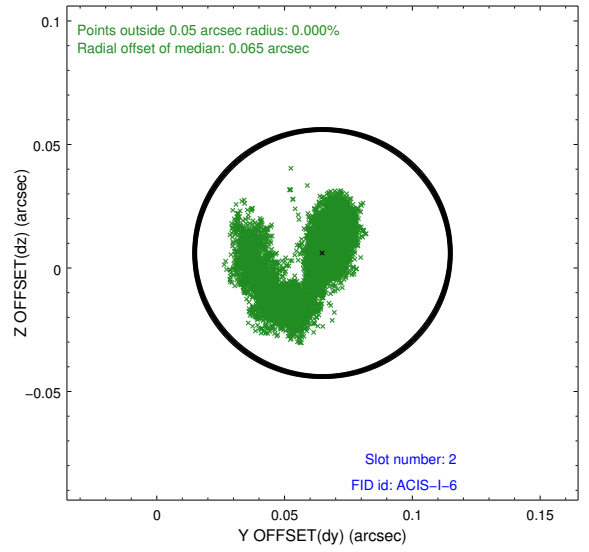
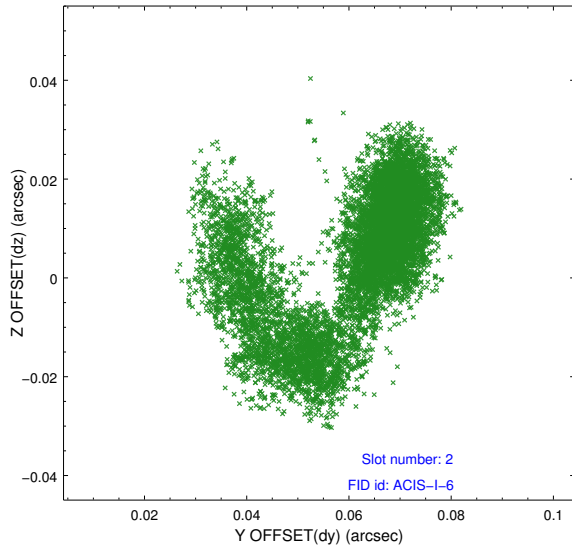
## 2.5.2 Slot 1



Time (s)



### 2.5.3 Slot 2



# A Summary

## A.1 Status

V&V Scientist	Beth Sundheim
V&V Date (YYYY-MM-DD)	2012.07.03
V&V Edition	1
V&V Disposition and Status	OK
V&V Charge Time	34.106014460742

## A.2 Comments