

V&V Reference Report

L2 ASCDS Version : 8.4.5

Observation 12229 - L2 Version 2
Chandra X-Ray Center

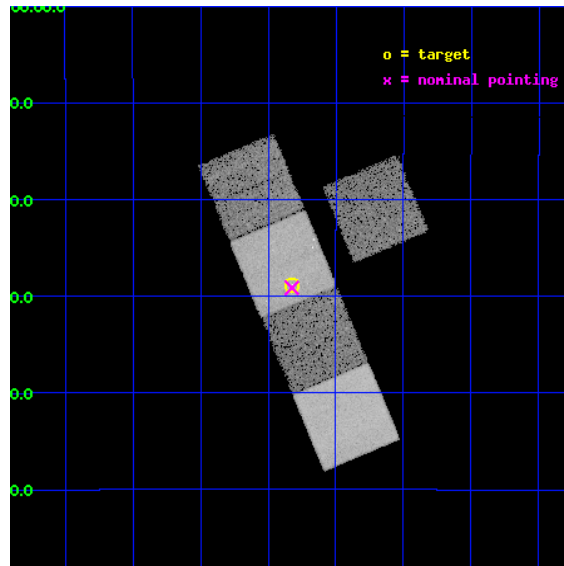
L2 Processing Date : Jun 28 2012

Contents

1	Front	2
2	OBI	3
2.1	OBI	3
2.1.1	Images	3
2.1.2	Bias	3
2.1.3	Parameters	4
2.1.4	Events	4
2.2	Compared Parameters	5
2.3	Aspect	6
2.4	Star Slots	9
2.4.1	Slot 3	9
2.4.2	Slot 4	10
2.4.3	Slot 5	11
2.4.4	Slot 6	12
2.4.5	Slot 7	13
2.5	FID Slots	14
2.5.1	Slot 0	14
2.5.2	Slot 1	15
2.5.3	Slot 2	16
A	Summary	17
A.1	Status	17
A.2	Comments	17

1 Front

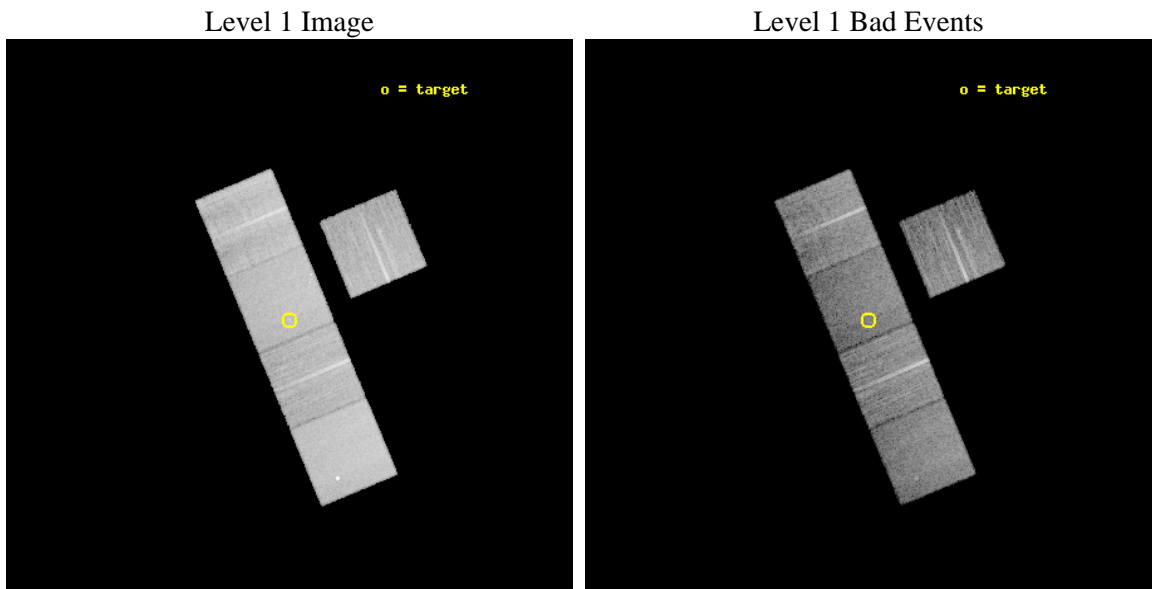
seq_num	501369	Sequence number
obs_id	12229	Observation id
title	Chandra Observations of the ultra-dark GRB 100615A	Proposal title
observer	Dr Andrew Levan	Principal investigator
object	GRB100615A	Source name
dtycycle	0	
cycle	P	events from which exps? Prim/Second/Both
ra_targ	177.205417	Observer's specified target RA [deg]
dec_targ	-19.481222	Observer's specified target Dec [deg]
ra_nom	177.20620656254	Nominal RA [deg]
dec_nom	-19.485988248816	Nominal Dec [deg]
roll_nom	247.28099777515	Nominal Roll [deg]
revision	2	Processing version of data
ontime	15037.308718681	Sum of GTIs [s]
livetime	14840.835209966	Livetime [s]
ontime3	15037.185598671	Sum of GTIs [s]
ontime5	15037.267678678	Sum of GTIs [s]
ontime6	15027.803747594	Sum of GTIs [s]
ontime7	15037.308718681	Sum of GTIs [s]
ontime8	15034.003568411	Sum of GTIs [s]
l2events	176826	Number of level 2 events



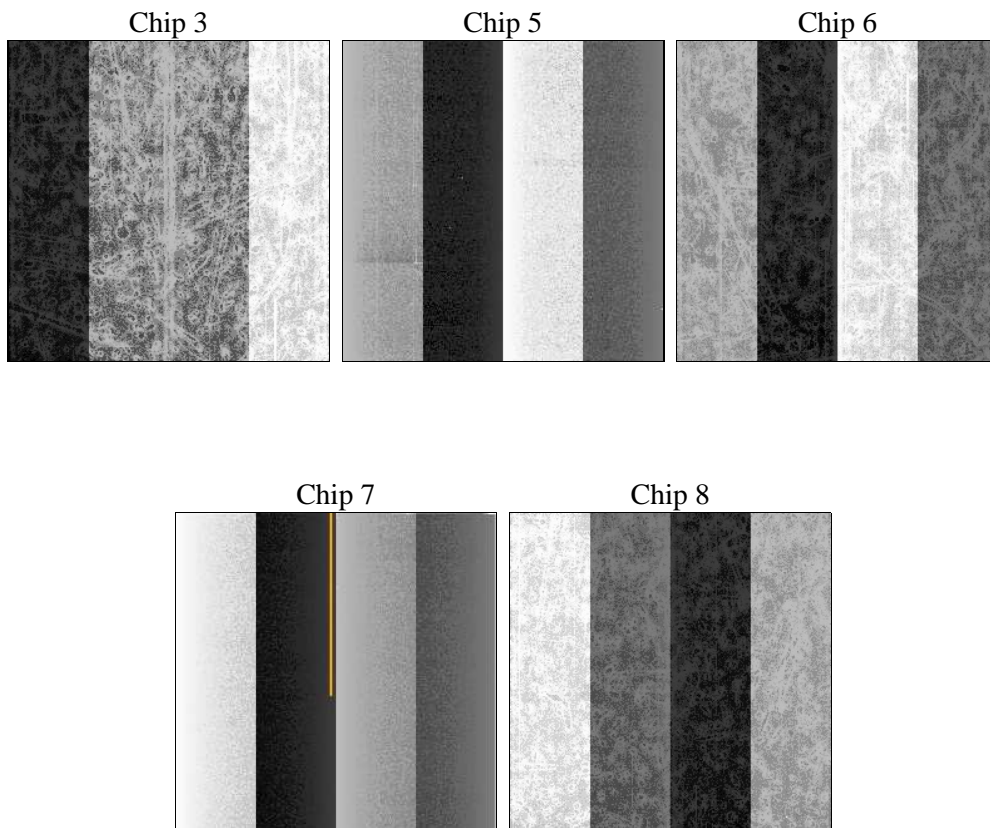
2 OBI

2.1 OBI

2.1.1 Images



2.1.2 Bias



2.1.3 Parameters

obi_num	0	Obi number	sched_exp_time	15000.000000	[s] Scheduled observation exposure time
ascdsver	8.4.5	Processing system revision	ontime	15037.308718681	Sum of GTIs [s]
caldbver	4.5.0	 	ontime3	15037.185598671	Sum of GTIs [s]
date	2012-06-28T20:40:24	Date and time of file creation	ontime5	15037.267678678	Sum of GTIs [s]
revision	2	Processing version of data	ontime6	15027.803747594	Sum of GTIs [s]
			ontime7	15037.308718681	Sum of GTIs [s]
			ontime8	15034.003568411	Sum of GTIs [s]
			l1events	677895	Number of level 1 events

2.1.4 Events

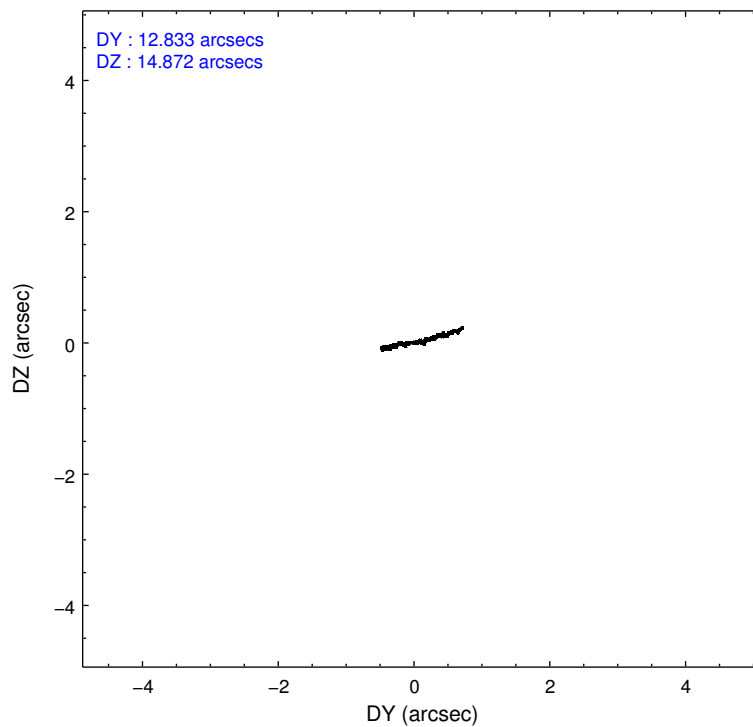
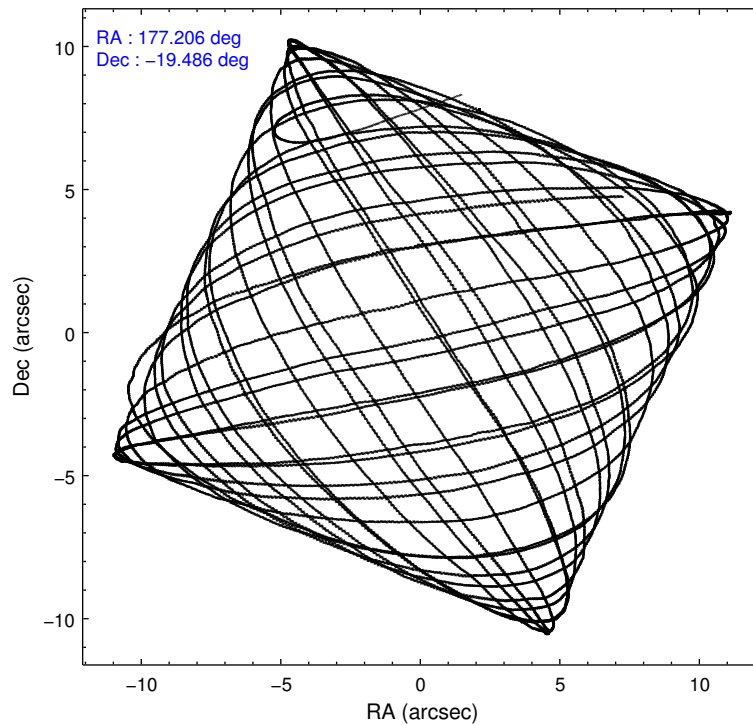
	ccd 3	ccd 5	ccd 6	ccd 7	ccd 8
level 1 events	108775	169400	114302	139600	145818
rejected events	97277	86441	101541	76087	106607
rejected %	89%	51%	88%	54%	73%

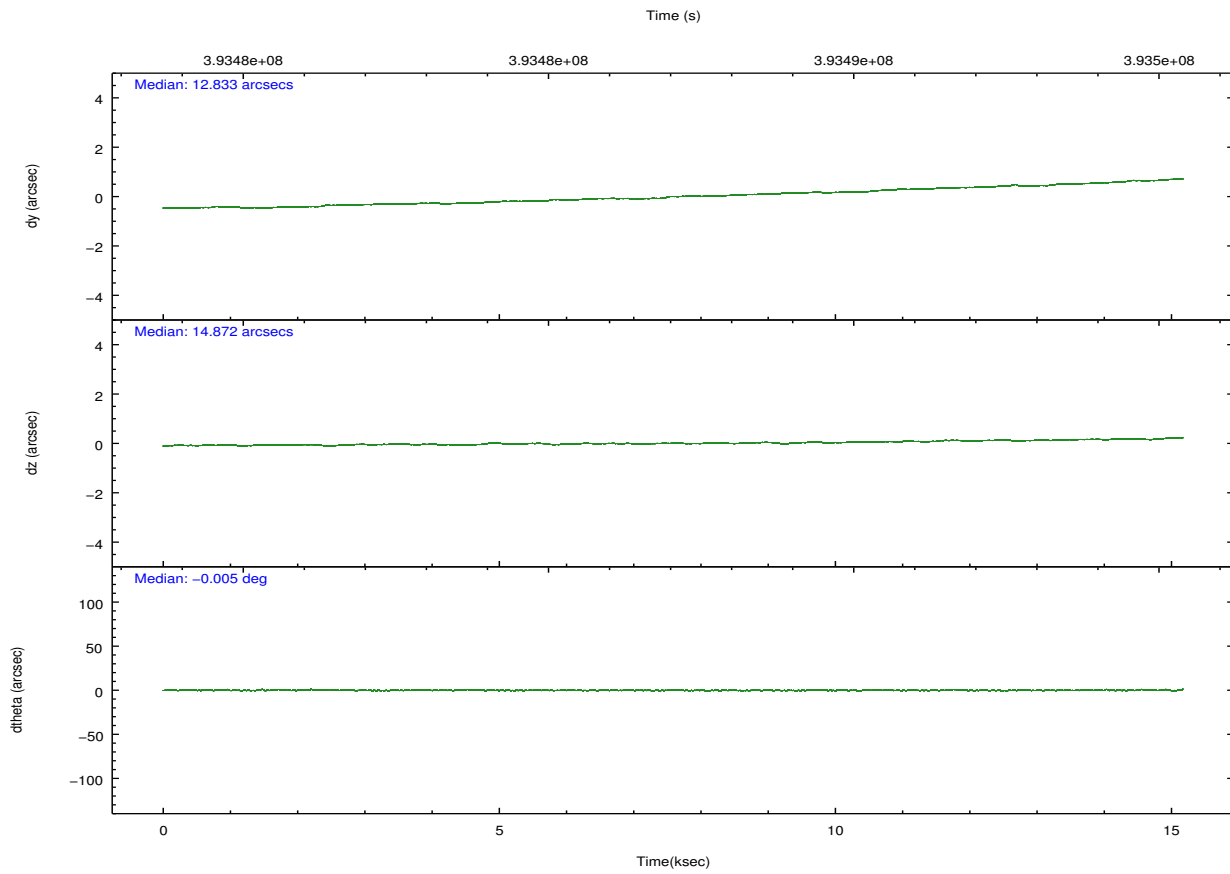
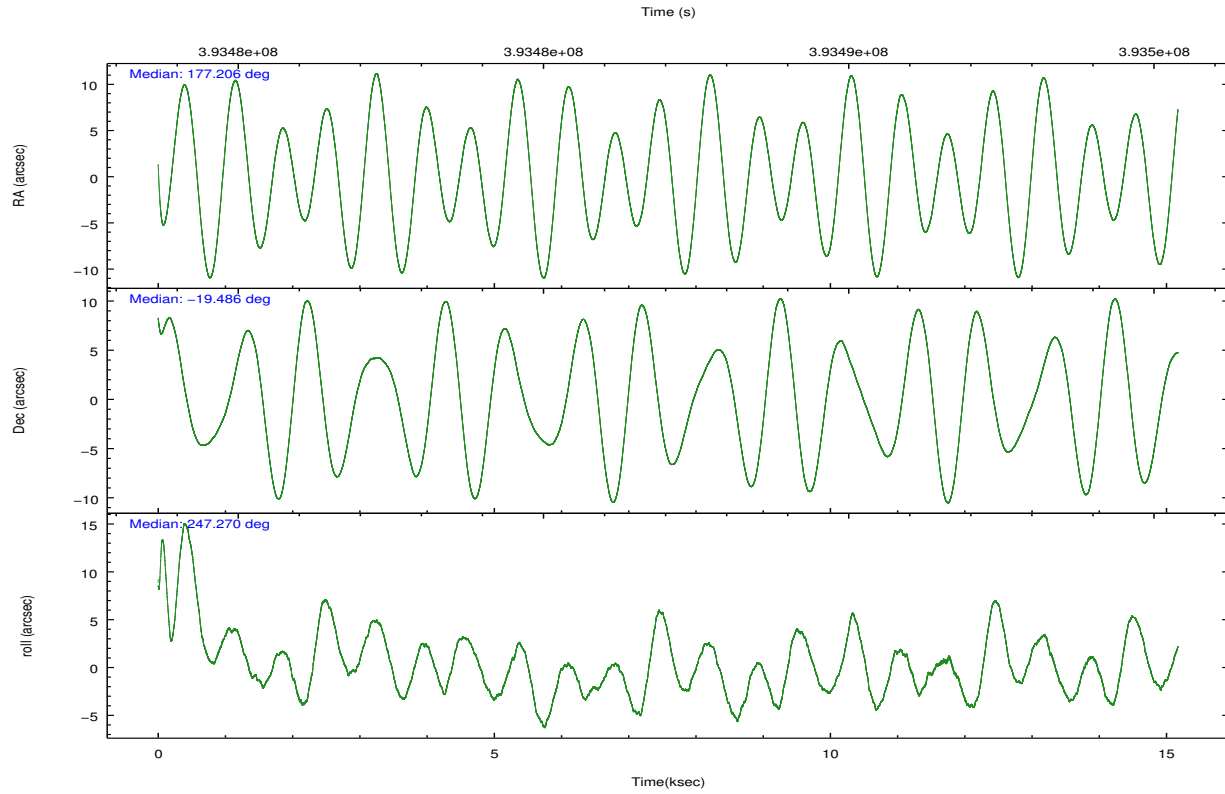
	ccd 3	ccd 5	ccd 6	ccd 7	ccd 8
grade 0 events	4115	6611	4421	6036	11863
	3%	3%	3%	4%	8%
grade 1 events	54	398	57	179	161
	0%	0%	0%	0%	0%
grade 2 events	2573	24953	2876	13339	9140
	2%	14%	2%	9%	6%
grade 3 events	1292	3555	1359	5632	4152
	1%	2%	1%	4%	2%
grade 4 events	1262	3364	1330	5641	3773
	1%	1%	1%	4%	2%
grade 5 events	5140	13172	5190	14392	7356
	4%	7%	4%	10%	5%
grade 6 events	2257	44518	2782	32890	10357
	2%	26%	2%	23%	7%
grade 7 events	92082	72829	96287	61491	99016
	84%	42%	84%	44%	67%

2.2 Compared Parameters

Parameter	Planned	Actual	Parameter	Planned	Actual
Instrument	ACIS	ACIS	Obspar format version number	7	7
Detector	ACIS-35678	ACIS-35678	Obspar file type	PREDICTED	ACTUAL
Grating	NONE	NONE	Obspar update status	NONE	UPDATED
Data mode	FAINT	FAINT	CCD I0 on	N	N
Observation mode	POINTING	POINTING	CCD I1 on	N	N
[deg] Pointing RA	177.202156	177.2062065625421	CCD I2 on	N	N
[deg] Pointing Dec	-19.458938	-19.48598824881646	CCD I3 on	O1	Y
[deg] Pointing Roll	247.123023	247.28099777515	CCD S0 on	N	N
[mm] SIM focus pos	-0.684267	-0.6828225247311905	CCD S1 on	Y	Y
[mm] SIM defocus	0	0.001444936568705701	CCD S2 on	Y	Y
[mm] SIM translation stage pos	-190.132523	-190.1400660498719	CCD S3 on	Y	Y
[mm] SIM translation stage offset	0	0.00754346686406393	CCD S4 on	Y	Y
[s] Observation start time (MET)	393479627.184000	393478440.86264	CCD S5 on	N	N
Observation start date	2010-06-21T03:52:41	2010-06-21T03:34:00	Number of optional ACIS chips dropped	0	0
[s] Observation end time (MET)	393494627.184000	393495491.73851	On-chip summing requested	N	N
Observation end date	2010-06-21T08:02:41	2010-06-21T08:18:11	Subarray requested	NONE	NONE
Read mode	TIMED	TIMED	Alternating exposures requested	N	N
			[s] Primary exposure time	0.000000	3.1

2.3 Aspect





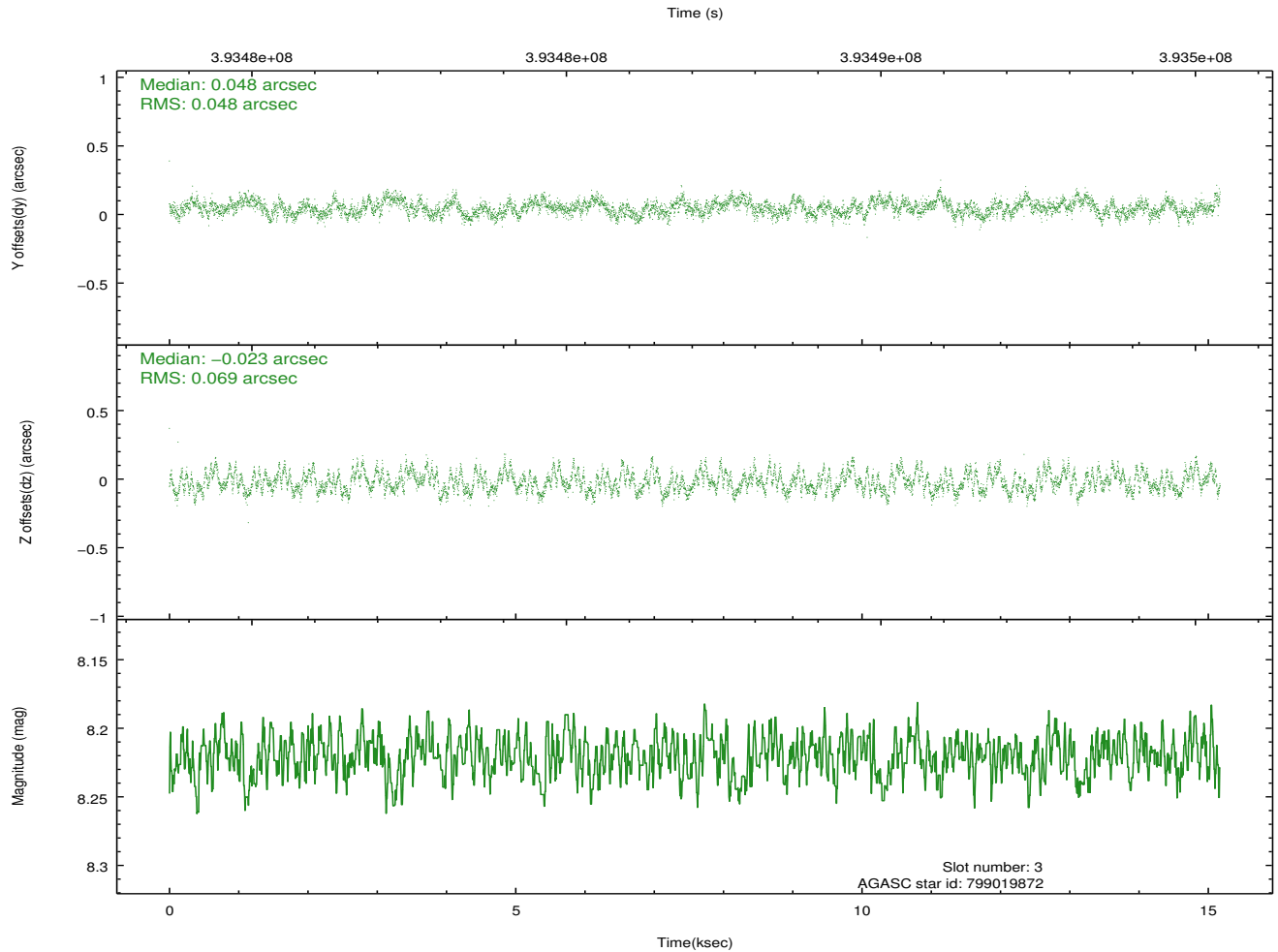
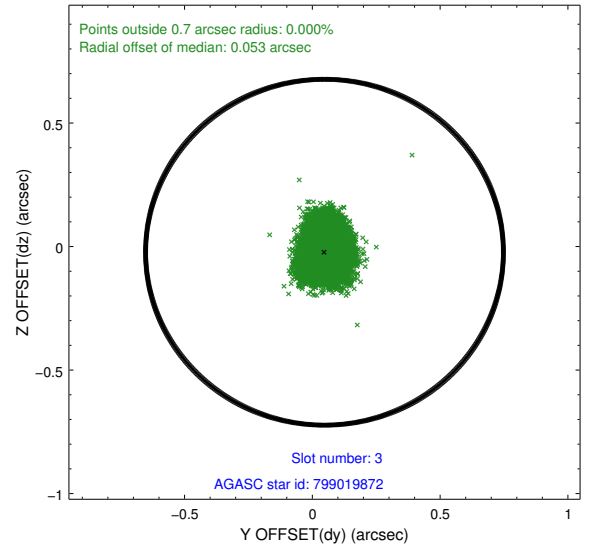
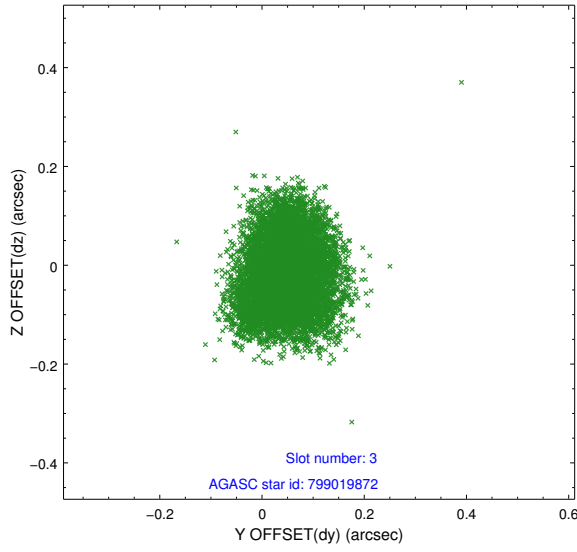
Slot Statistics

slot	status	id	mag	n_pts	med_dy	med_dz	dr1	dr2	ra	dec	mean_y	mean_z
0	FID	ACIS-S-2	6.91	3700	-0.053	-0.026	0.008	0.014	0.000000	0.000000	-765.78	-1736.31
1	FID	ACIS-S-4	7.00	3701	0.170	0.033	0.020	0.028	0.000000	0.000000	2147.55	171.98
2	FID	ACIS-S-5	7.03	3701	-0.149	0.002	0.016	0.023	0.000000	0.000000	-1818.38	165.88
3	GUIDE	799019872	8.22	7397	0.048	-0.023	0.092	0.141	176.862532	-19.196058	-421.24	-1431.81
4	GUIDE	799019880	8.57	7397	-0.180	0.202	0.077	0.121	176.856065	-18.933274	-1283.81	-1821.13
5	GUIDE	799027048	8.69	7394	-0.073	0.253	0.086	0.146	177.616285	-19.682768	198.44	1607.30
6	GUIDE	799019112	9.39	7376	0.033	-0.142	0.129	0.220	176.662800	-19.007037	-781.83	-2322.50
7	GUIDE	799026904	7.74	7400	0.176	-0.291	0.063	0.102	178.050822	-19.206191	-1953.54	2306.69

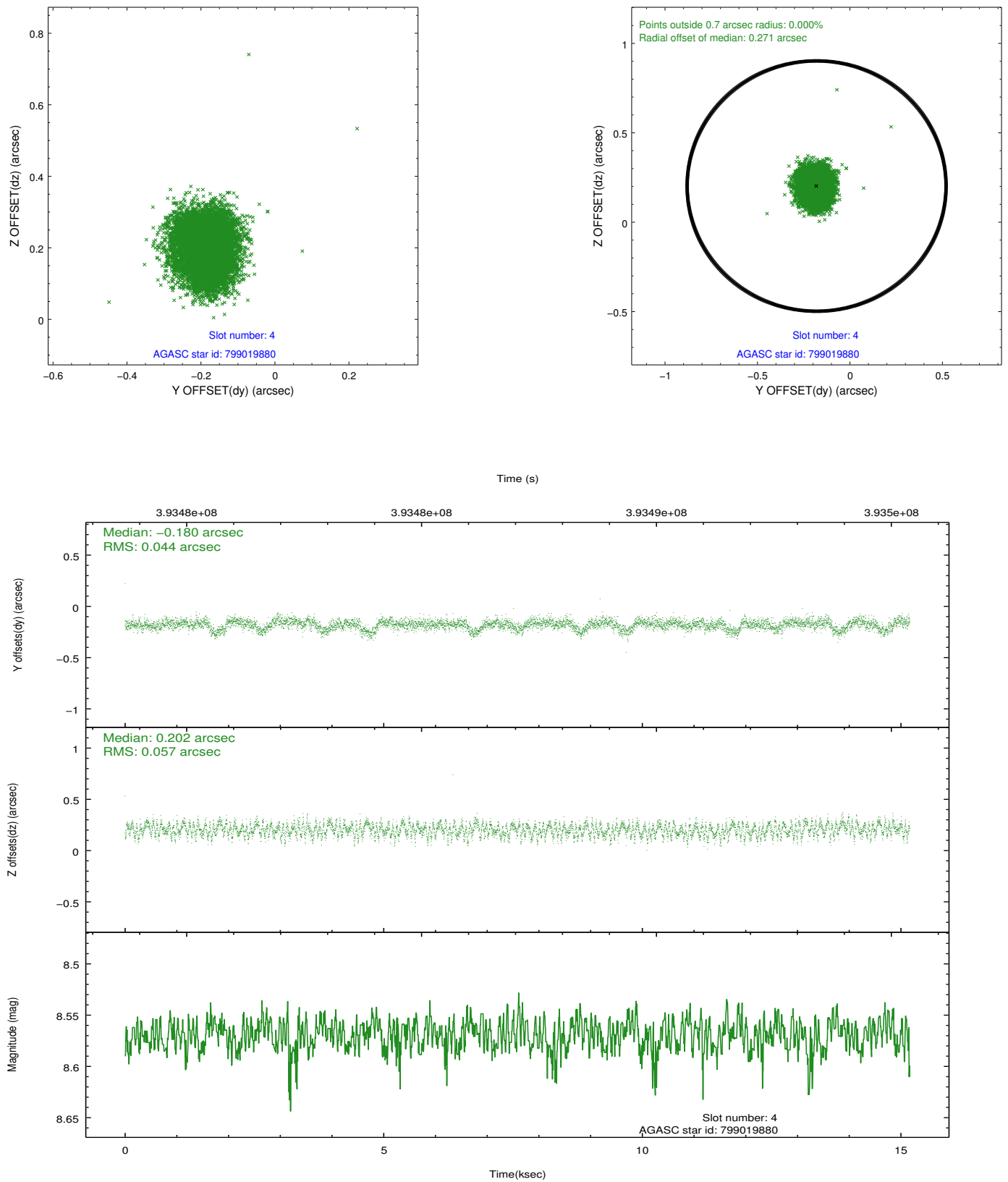
∞

2.4 Star Slots

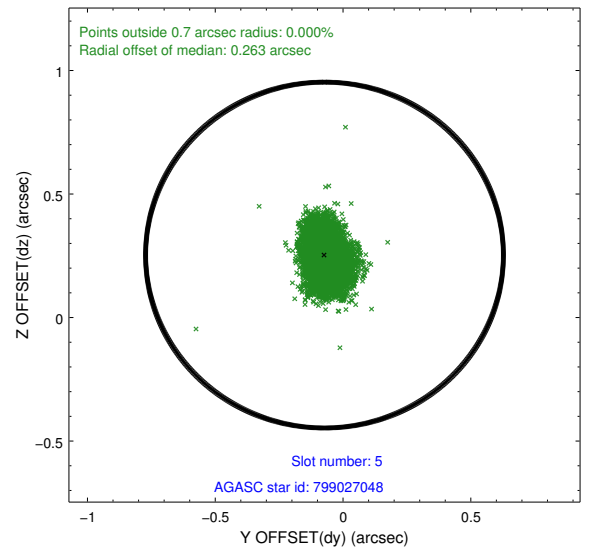
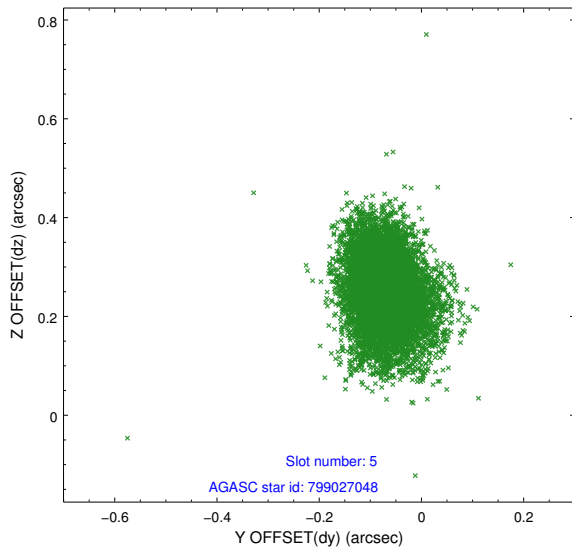
2.4.1 Slot 3



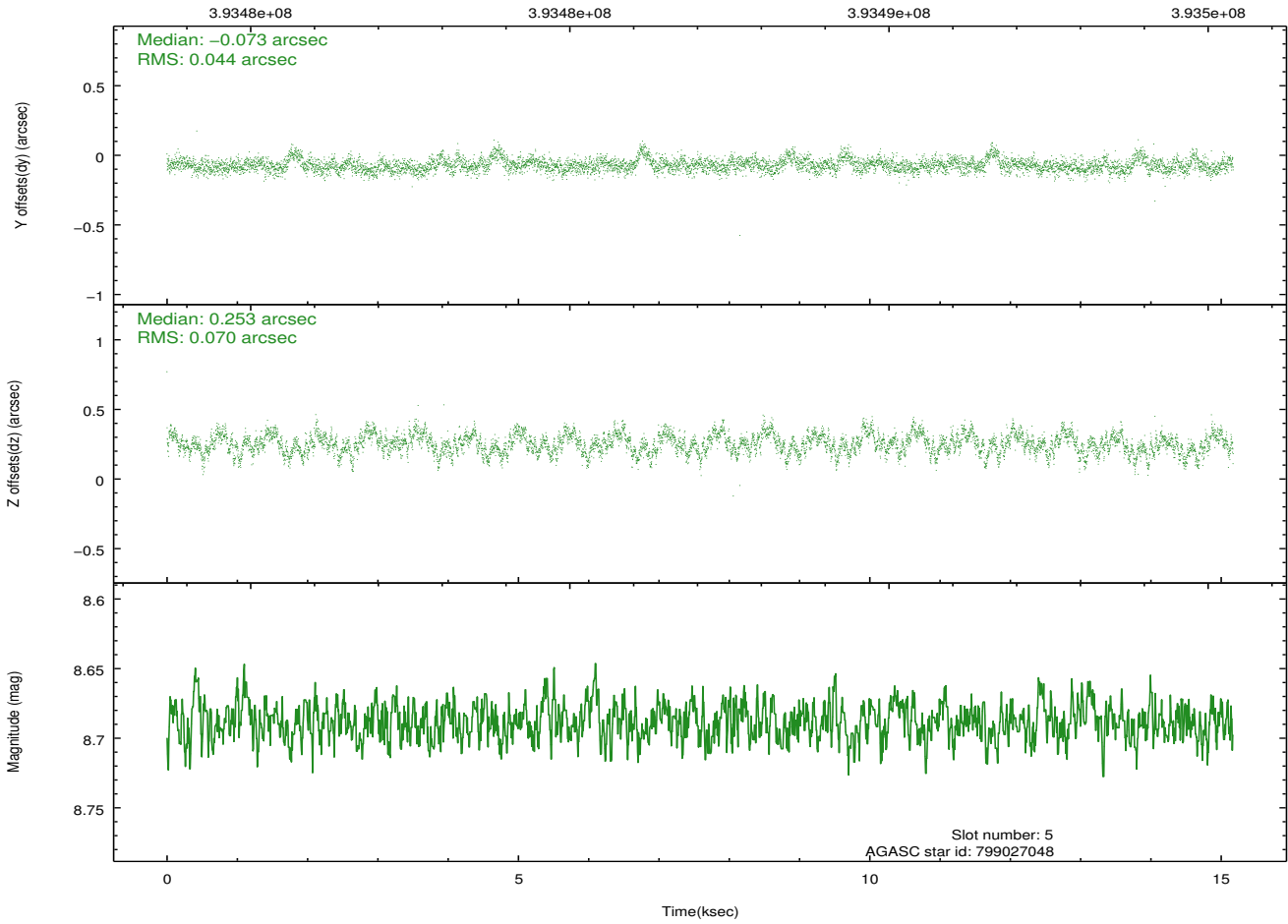
2.4.2 Slot 4



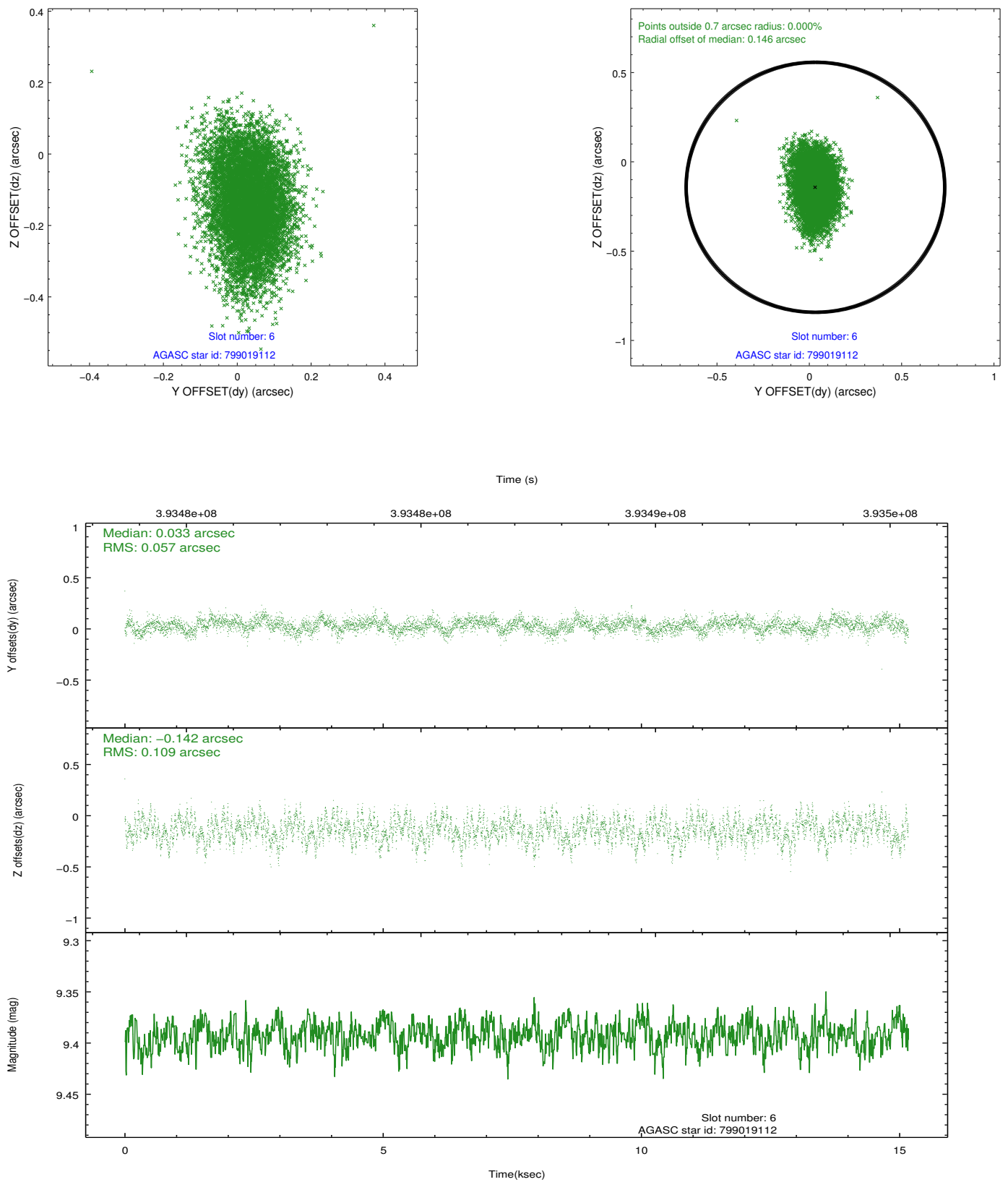
2.4.3 Slot 5



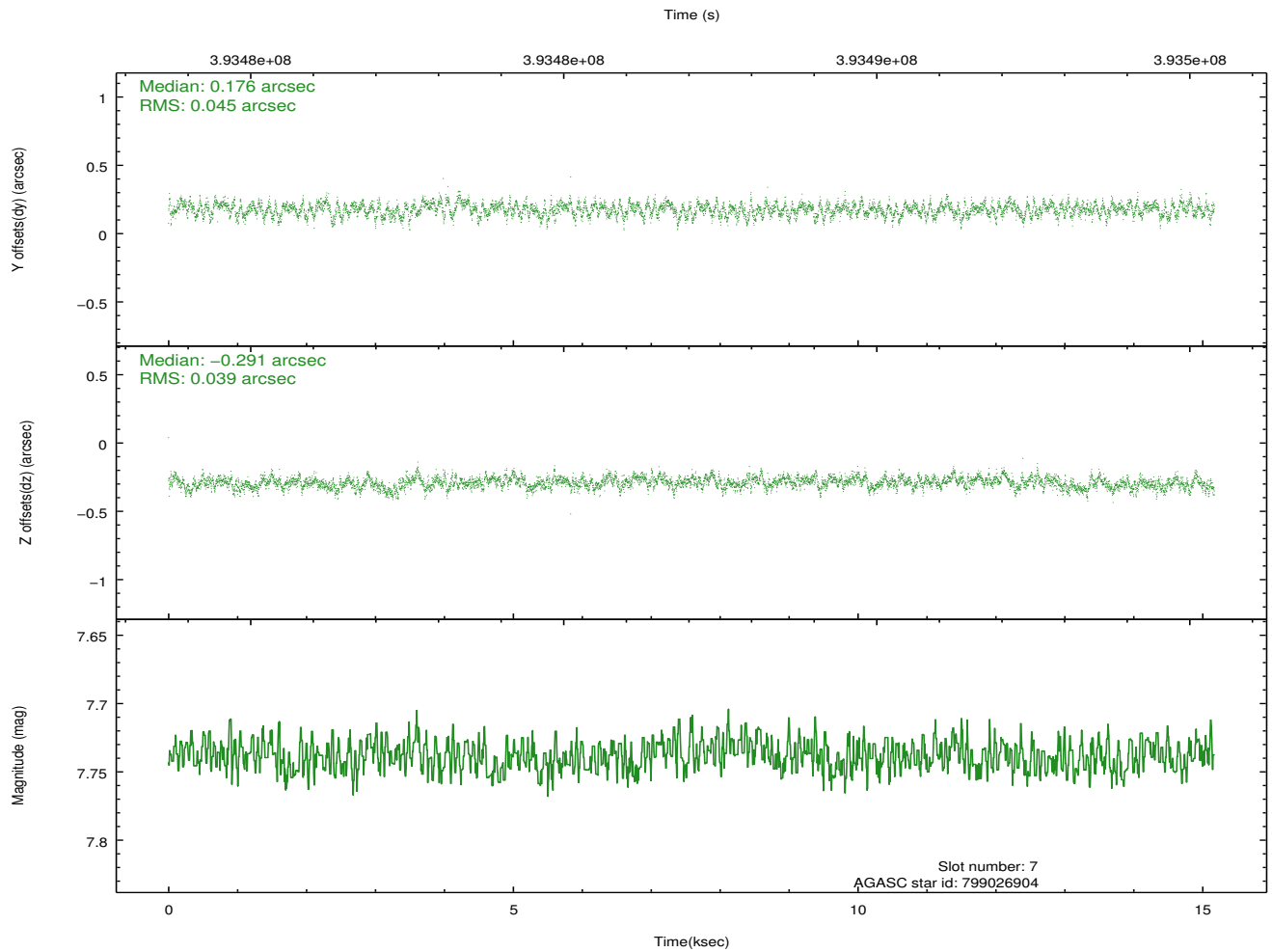
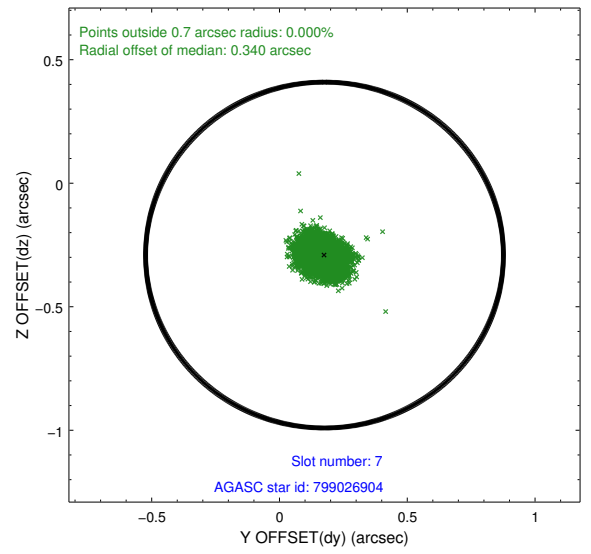
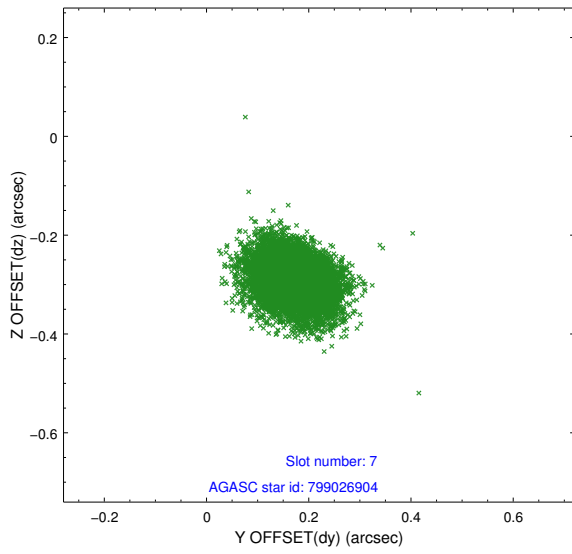
Time (s)



2.4.4 Slot 6

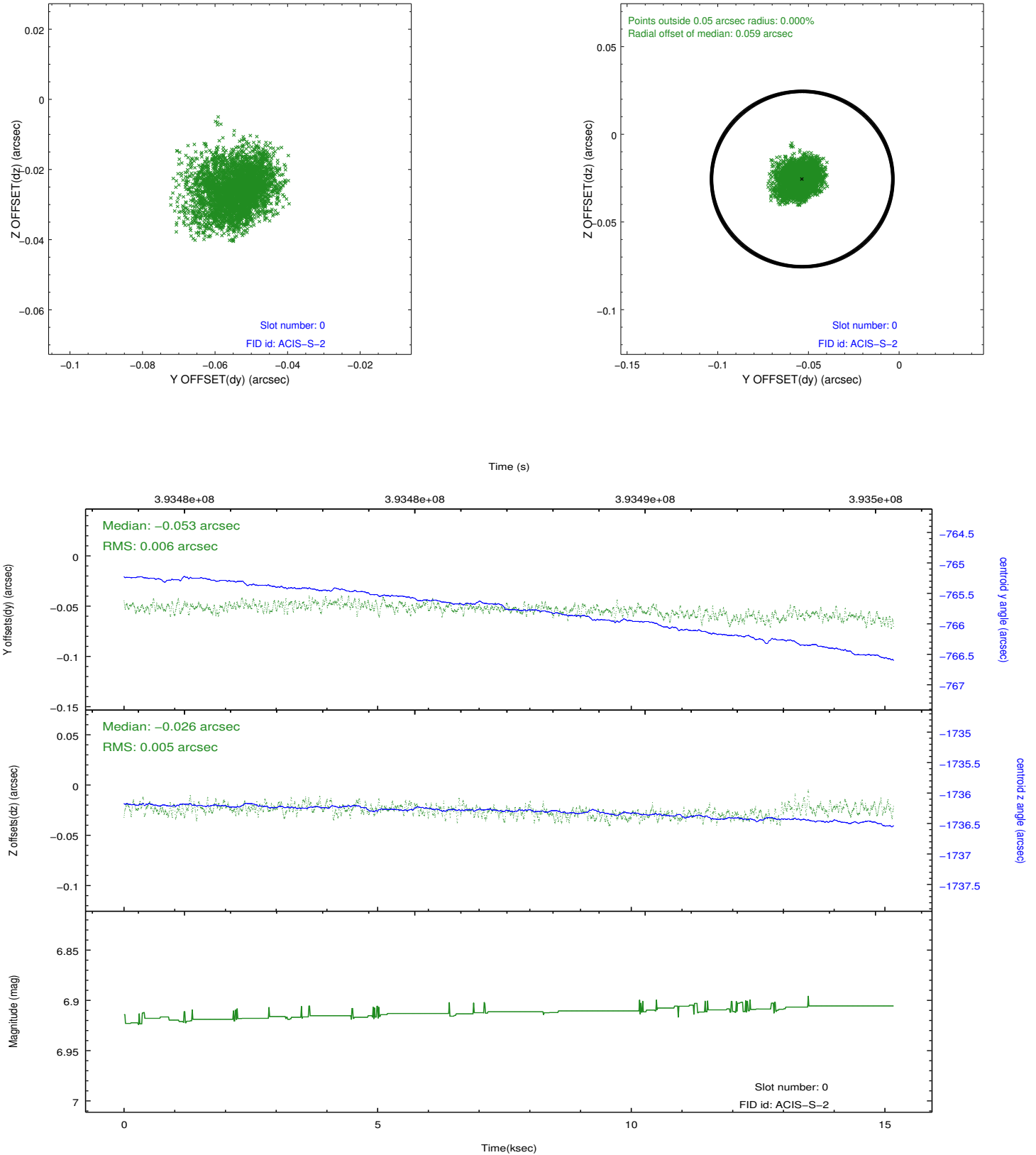


2.4.5 Slot 7

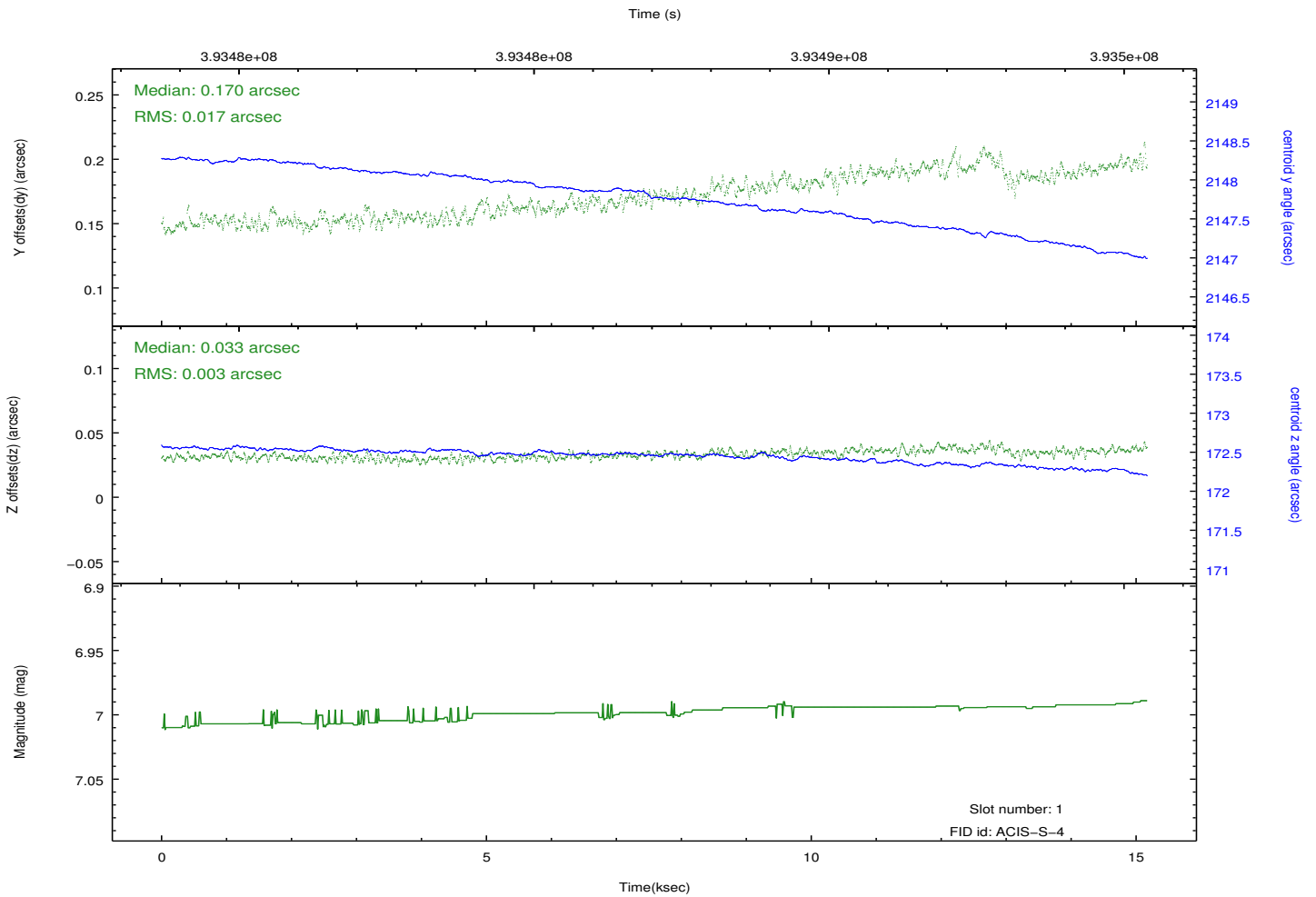
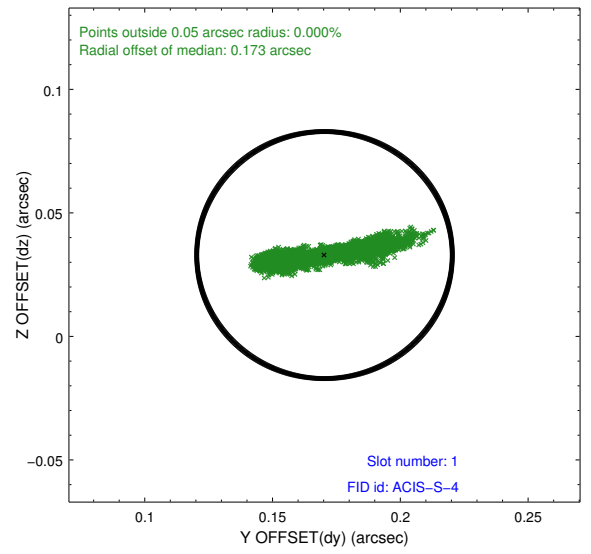
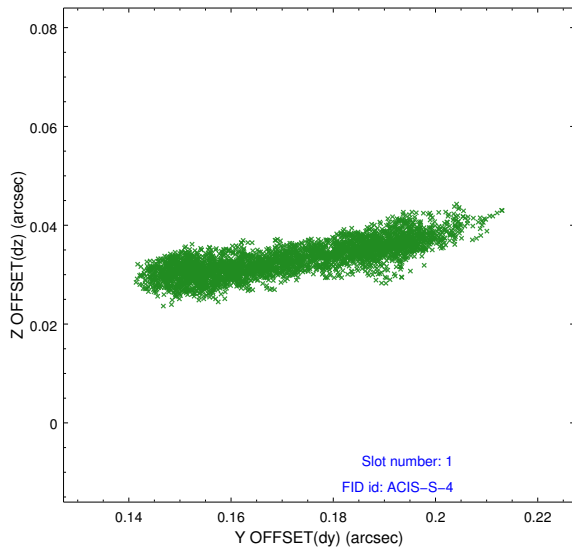


2.5 FID Slots

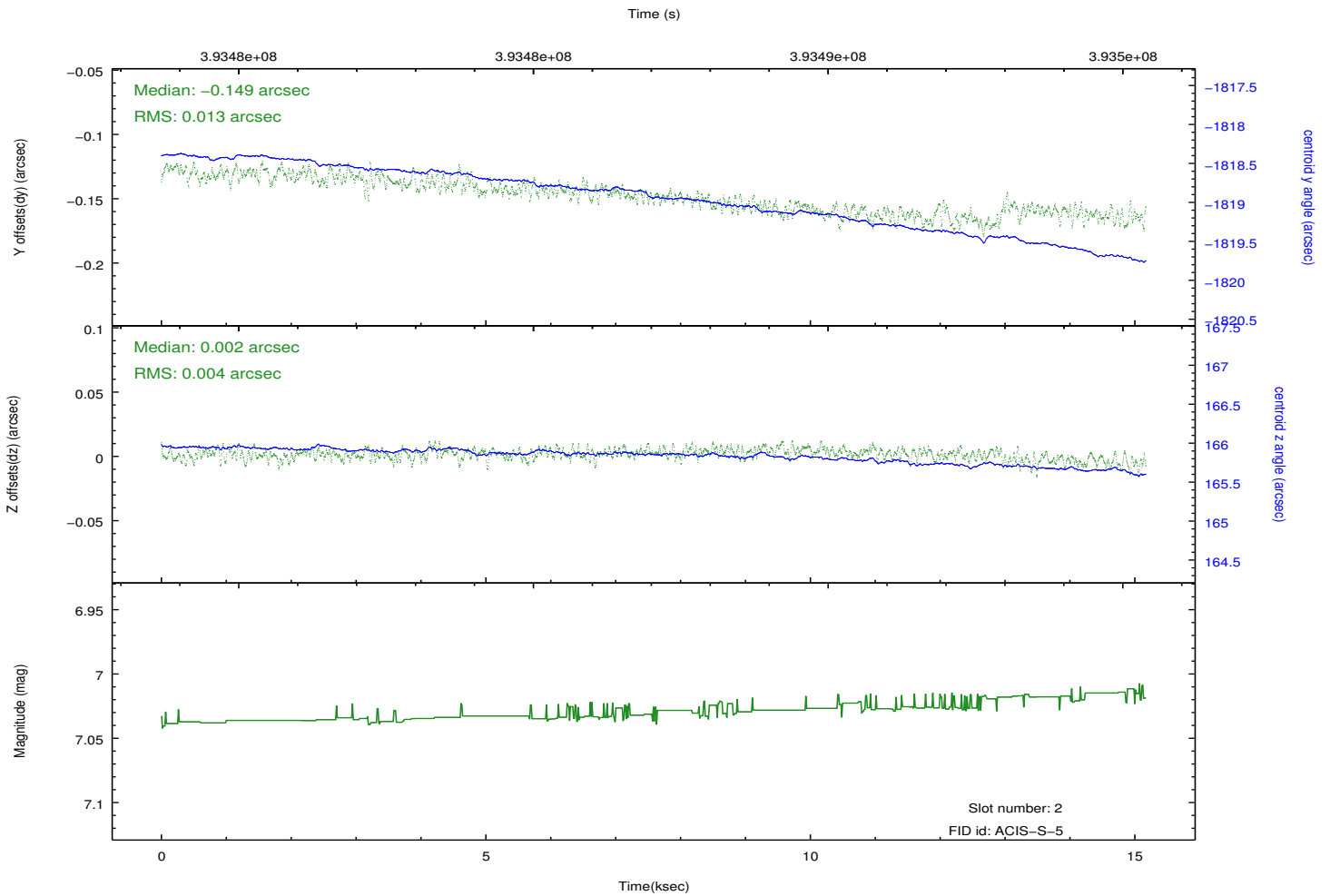
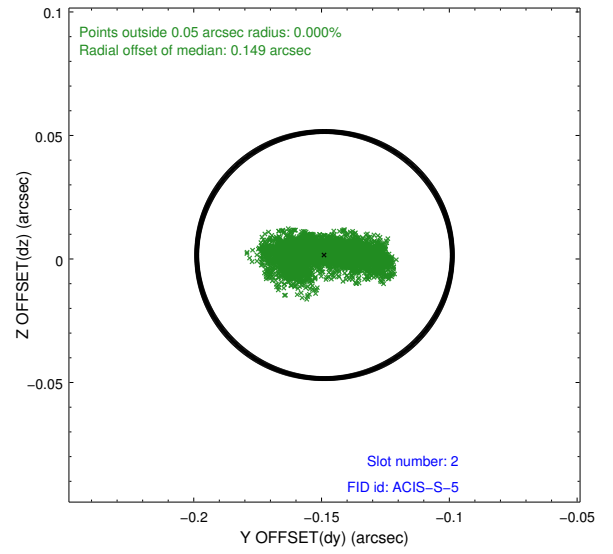
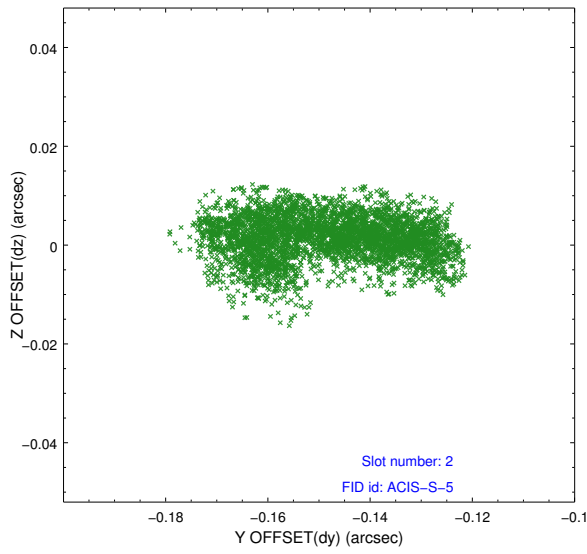
2.5.1 Slot 0



2.5.2 Slot 1



2.5.3 Slot 2



A Summary

A.1 Status

V&V Scientist	Jen Lauer
V&V Date (YYYY-MM-DD)	2012.07.05
V&V Edition	1
V&V Disposition and Status	OK
V&V Charge Time	15.03730871594

A.2 Comments