

V&V Reference Report

L2 ASCDS Version : 8.4.5

Observation 12249 - L2 Version 2
Chandra X-Ray Center

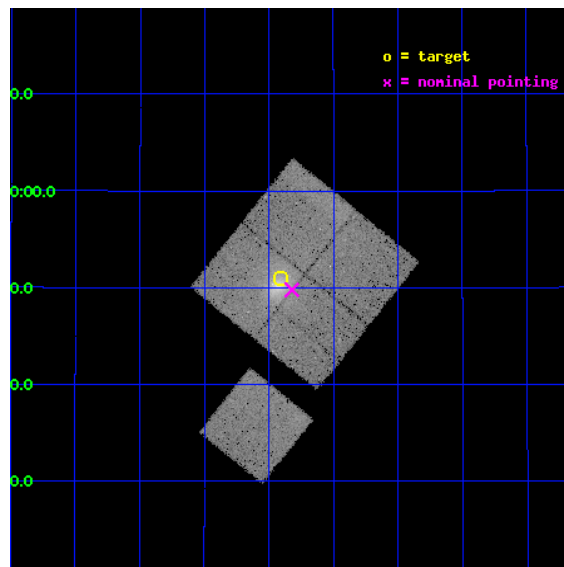
L2 Processing Date : Jul 3 2012

Contents

1	Front	2
2	OBI	3
2.1	OBI	3
2.1.1	Images	3
2.1.2	Bias	3
2.1.3	Parameters	4
2.1.4	Events	4
2.2	Compared Parameters	5
2.3	Aspect	6
2.4	Star Slots	9
2.4.1	Slot 3	9
2.4.2	Slot 4	10
2.4.3	Slot 5	11
2.4.4	Slot 6	12
2.4.5	Slot 7	13
2.5	FID Slots	14
2.5.1	Slot 0	14
2.5.2	Slot 1	15
2.5.3	Slot 2	16
A	Summary	17
A.1	Status	17
A.2	Comments	17

1 Front

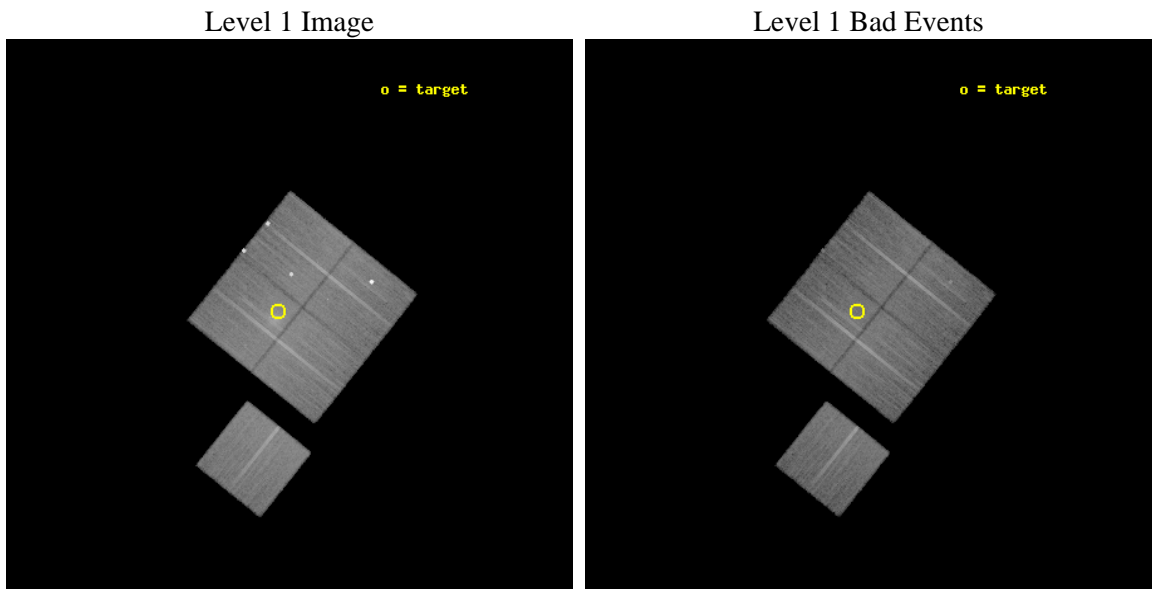
seq_num	800969	Sequence number
obs_id	12249	Observation id
title	Extending X-ray and Sunyaev-Zel'dovich effect calibrations to low mass galaxy clusters	Proposal title
observer	Dr Ben Maughan	Principal investigator
object	A2445	Source name
dtcycle	0	
cycle	P	events from which exps? Prim/Second/Both
ra_targ	336.727917	Observer's specified target RA [deg]
dec_targ	25.849	Observer's specified target Dec [deg]
ra_nom	336.70552475343	Nominal RA [deg]
dec_nom	25.8298212664	Nominal Dec [deg]
roll_nom	218.76259822155	Nominal Roll [deg]
revision	2	Processing version of data
ontime	27047.459187686	Sum of GTIs [s]
livetime	26694.06422135	Livetime [s]
ontime0	27047.459177792	Sum of GTIs [s]
ontime1	27044.318147361	Sum of GTIs [s]
ontime2	27047.459177792	Sum of GTIs [s]
ontime3	27047.459187686	Sum of GTIs [s]
ontime6	27047.459177792	Sum of GTIs [s]
l2events	104415	Number of level 2 events



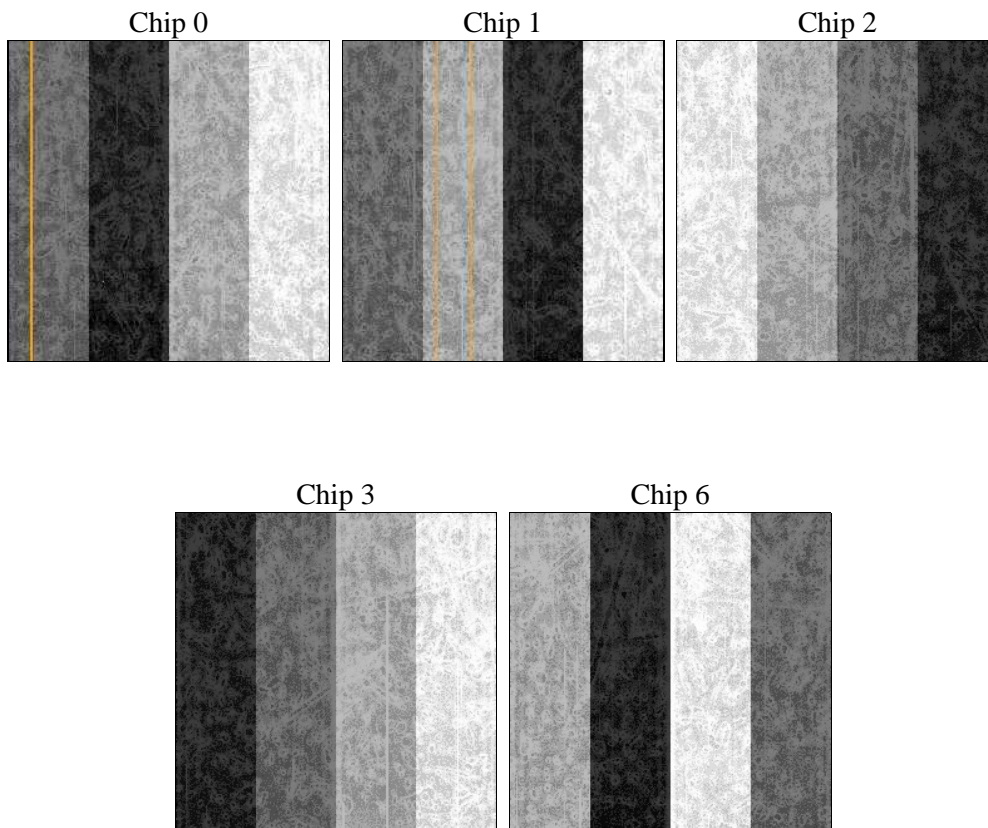
2 OBI

2.1 OBI

2.1.1 Images



2.1.2 Bias



2.1.3 Parameters

obi_num	0	Obi number	sched_exp_time	27000.000000	[s] Scheduled observation exposure time
ascdsver	8.4.5	Processing system revision	ontime	27047.459187686	Sum of GTIs [s]
caldsver	4.5.0	 	ontime0	27047.459177792	Sum of GTIs [s]
date	2012-07-03T09:00:13	Date and time of file creation	ontime1	27044.318147361	Sum of GTIs [s]
revision	2	Processing version of data	ontime2	27047.459177792	Sum of GTIs [s]
			ontime3	27047.459187686	Sum of GTIs [s]
			ontime6	27047.459177792	Sum of GTIs [s]
			l1events	1022524	Number of level 1 events

2.1.4 Events

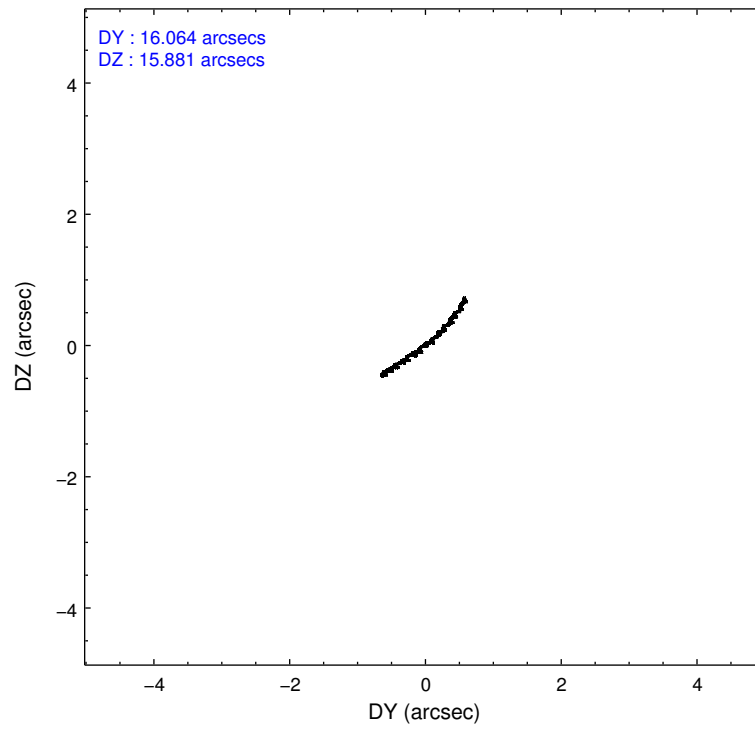
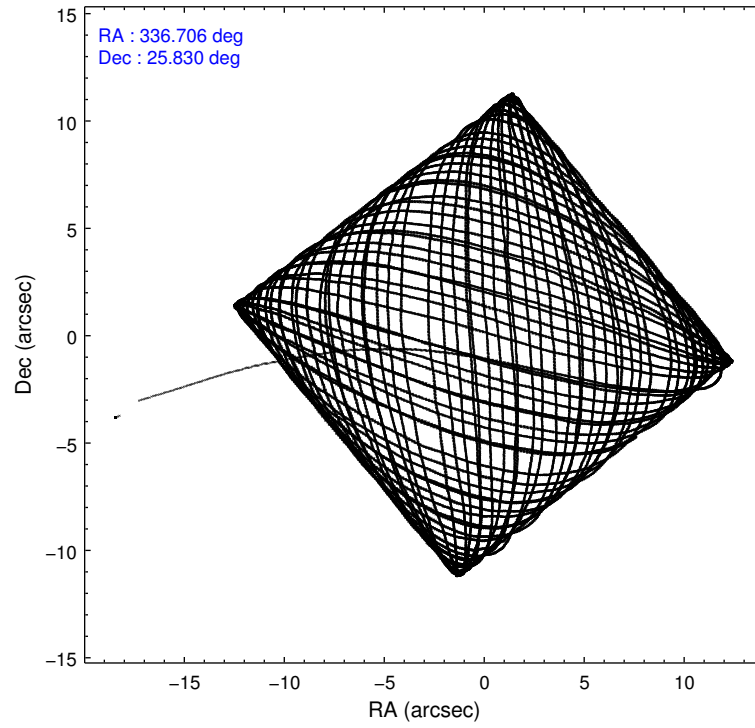
	ccd 0	ccd 1	ccd 2	ccd 3	ccd 6
level 1 events	205921	212523	205254	203939	194887
rejected events	160042	163434	183470	171267	173092
rejected %	77%	76%	89%	83%	88%

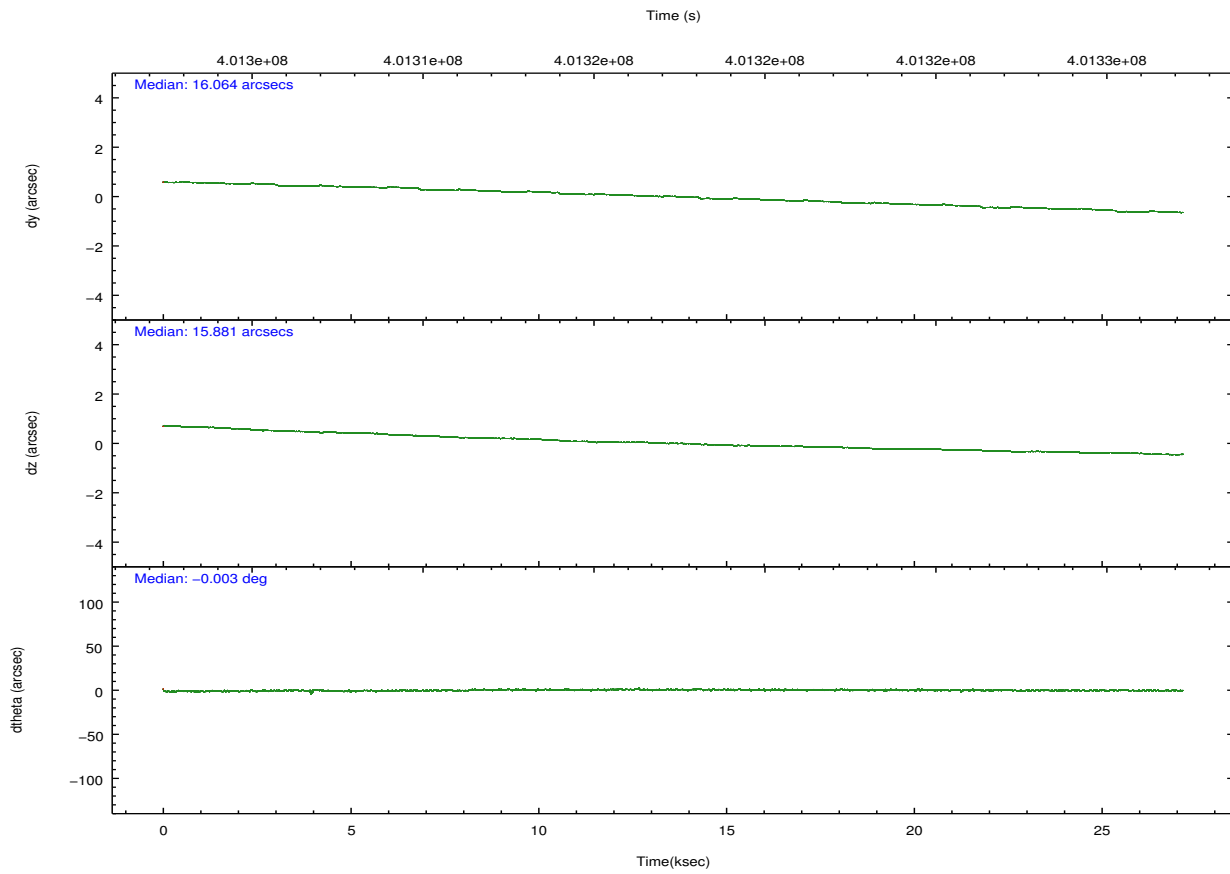
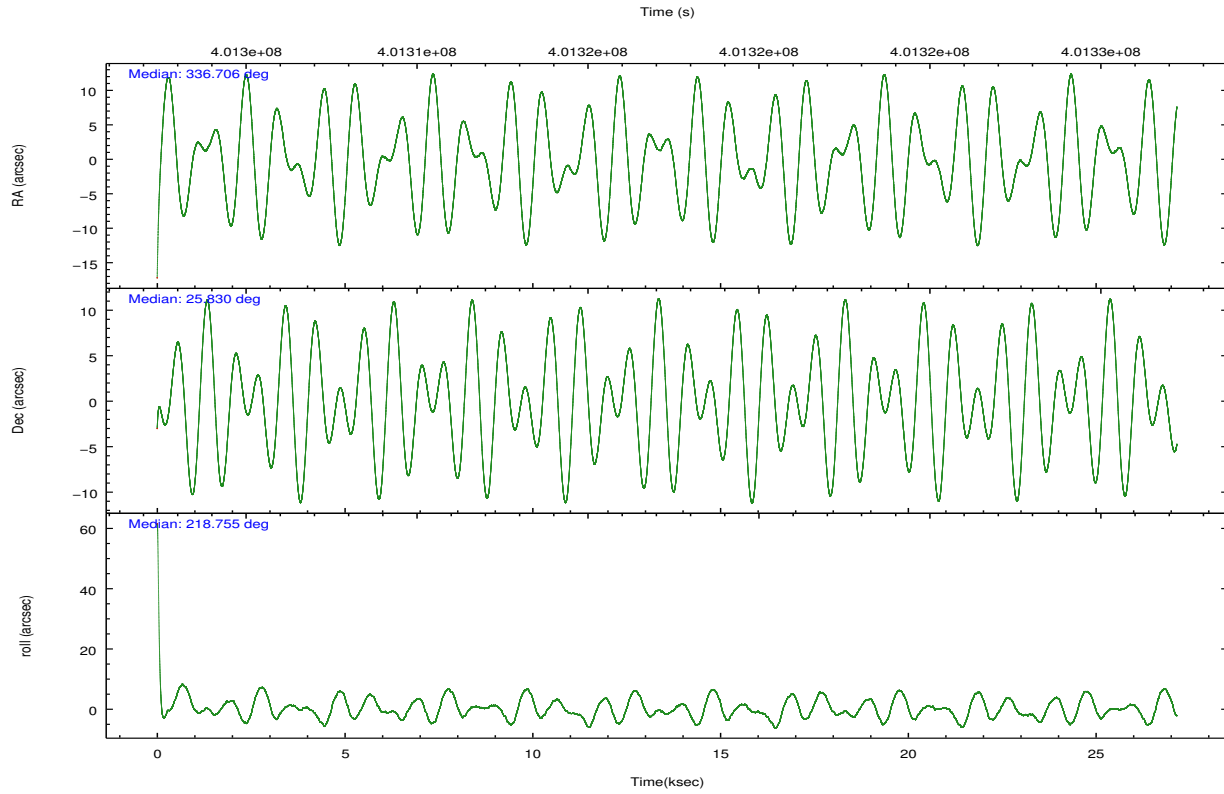
	ccd 0	ccd 1	ccd 2	ccd 3	ccd 6
grade 0 events	15514	26660	8240	17144	7434
	7%	12%	4%	8%	3%
grade 1 events	175	197	105	163	94
	0%	0%	0%	0%	0%
grade 2 events	21535	12563	5159	5819	4948
	10%	5%	2%	2%	2%
grade 3 events	2387	2474	2162	2552	2300
	1%	1%	1%	1%	1%
grade 4 events	2142	2411	2199	2579	2330
	1%	1%	1%	1%	1%
grade 5 events	8405	8832	7529	9310	8784
	4%	4%	3%	4%	4%
grade 6 events	4309	4988	4029	4587	4792
	2%	2%	1%	2%	2%
grade 7 events	151454	154398	175831	161785	164205
	73%	72%	85%	79%	84%

2.2 Compared Parameters

Parameter	Planned	Actual	Parameter	Planned	Actual
Instrument	ACIS	ACIS	Obspar format version number	7	7
Detector	ACIS-01236	ACIS-01236	Obspar file type	PREDICTED	ACTUAL
Grating	NONE	NONE	Obspar update status	NONE	UPDATED
Data mode	VFAINT	VFAINT	Number of optional ACIS chips dropped	0	0
Observation mode	POINTING	POINTING	On-chip summing requested	N	N
[deg] Pointing RA	336.716477	336.7055247534304	Subarray requested	NONE	NONE
[deg] Pointing Dec	25.855495	25.82982126639953	Alternating exposures requested	N	N
[deg] Pointing Roll	218.549109	218.7625982215535	[s] Primary exposure time	0.000000	3.1
[mm] SIM focus pos	-0.782348	-0.7809083437167272			
[mm] SIM defocus	0	0.001439871863259334			
[mm] SIM translation stage pos	-229.442463	-229.4438428438578			
[mm] SIM translation stage offset	-4.15	-4.148610159071865			
[s] Observation start time (MET)	401303896.184000	401302490.22551			
Observation start date	2010-09-19T17:17:10	2010-09-19T16:54:50			
[s] Observation end time (MET)	401330896.184000	401331764.22701			
Observation end date	2010-09-20T00:47:10	2010-09-20T01:02:44			
Read mode	TIMED	TIMED			

2.3 Aspect





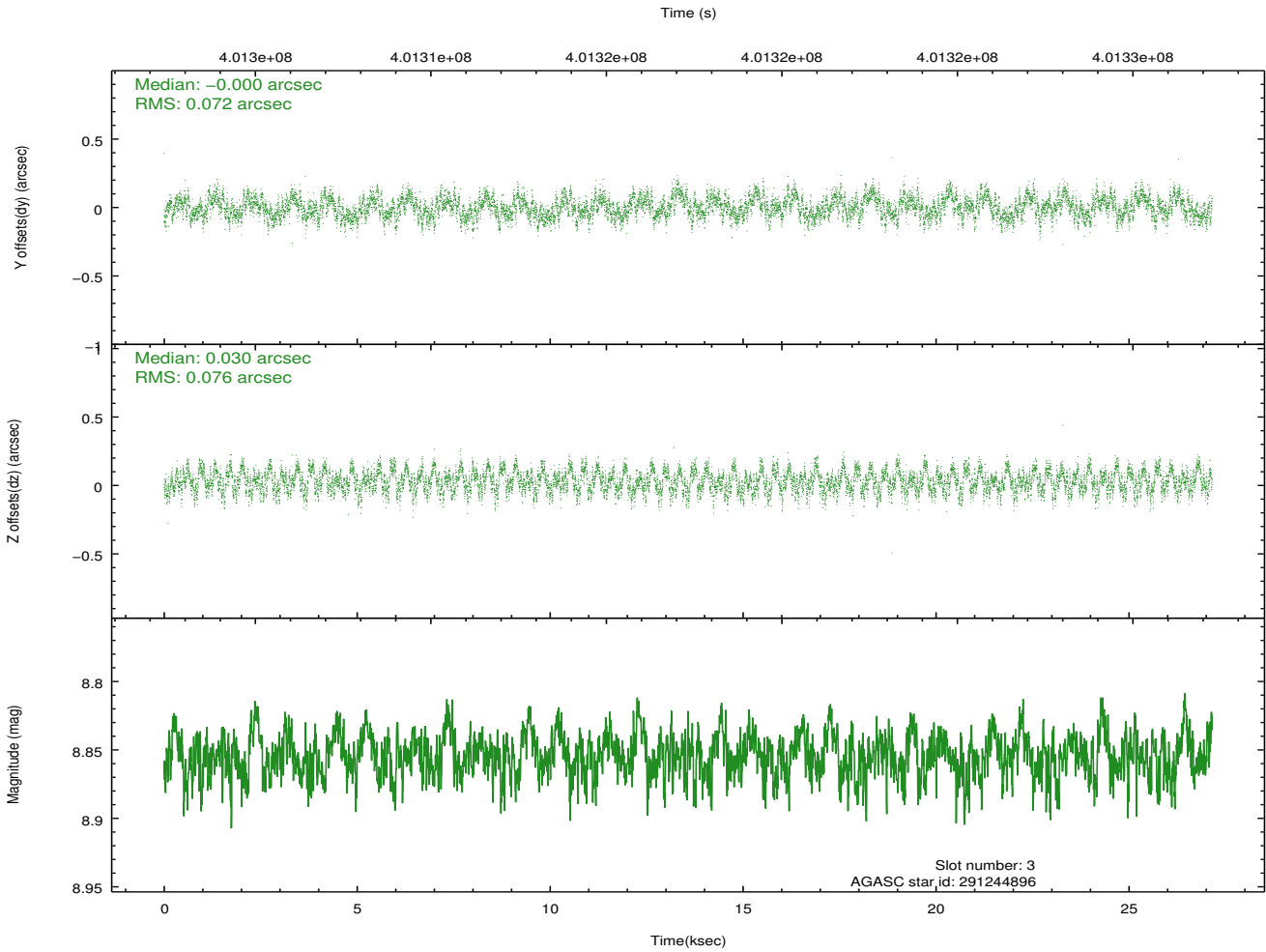
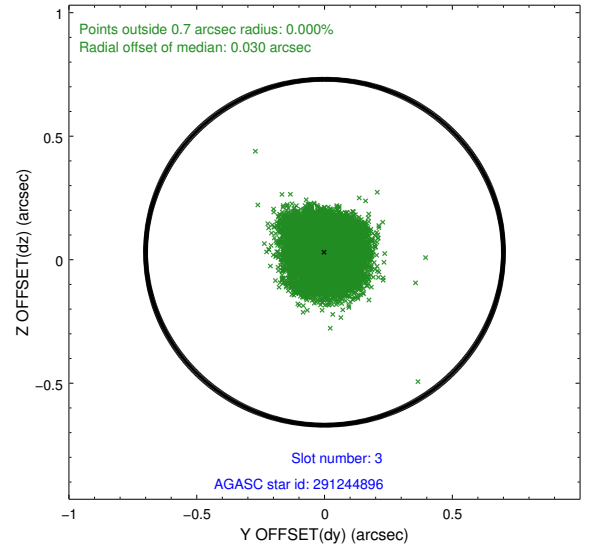
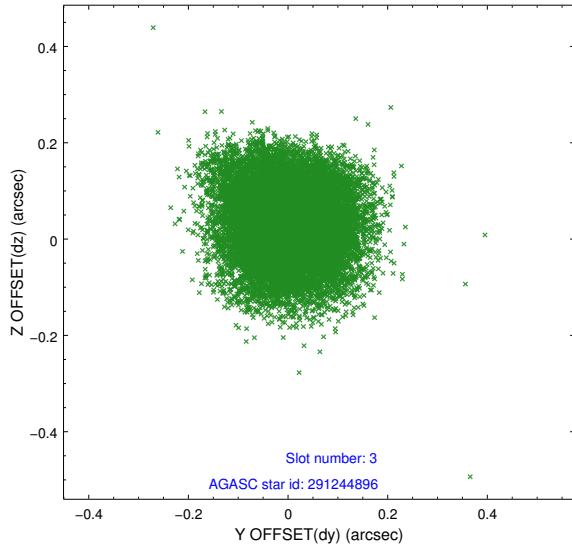
Slot Statistics

slot	status	id	mag	n_pts	med_dy	med_dz	dr1	dr2	ra	dec	mean_y	mean_z
0	FID	ACIS-I-1	7.07	6624	0.175	-0.056	0.012	0.021	0.000000	0.000000	923.49	-924.71
1	FID	ACIS-I-2	7.00	6624	-0.097	-0.023	0.015	0.032	0.000000	0.000000	-771.04	-930.65
2	FID	ACIS-I-5	7.06	6624	-0.171	0.151	0.012	0.021	0.000000	0.000000	-1825.19	972.89
3	GUIDE	291244896	8.85	13235	-0.000	0.030	0.114	0.174	335.944929	26.003327	1617.01	-1976.99
4	GUIDE	291383496	9.70	13215	-0.007	-0.035	0.121	0.199	337.209458	25.927611	-1412.73	790.18
5	GUIDE	291384088	9.91	13229	0.261	0.292	0.144	0.234	337.347877	25.818293	-1519.44	1376.60
6	GUIDE	291386512	9.36	13194	-0.238	-0.361	0.104	0.173	337.346299	25.514253	-837.90	2232.17
7	GUIDE	291775984	8.82	13237	-0.016	0.083	0.082	0.139	336.672359	26.516015	-1369.94	-1947.75

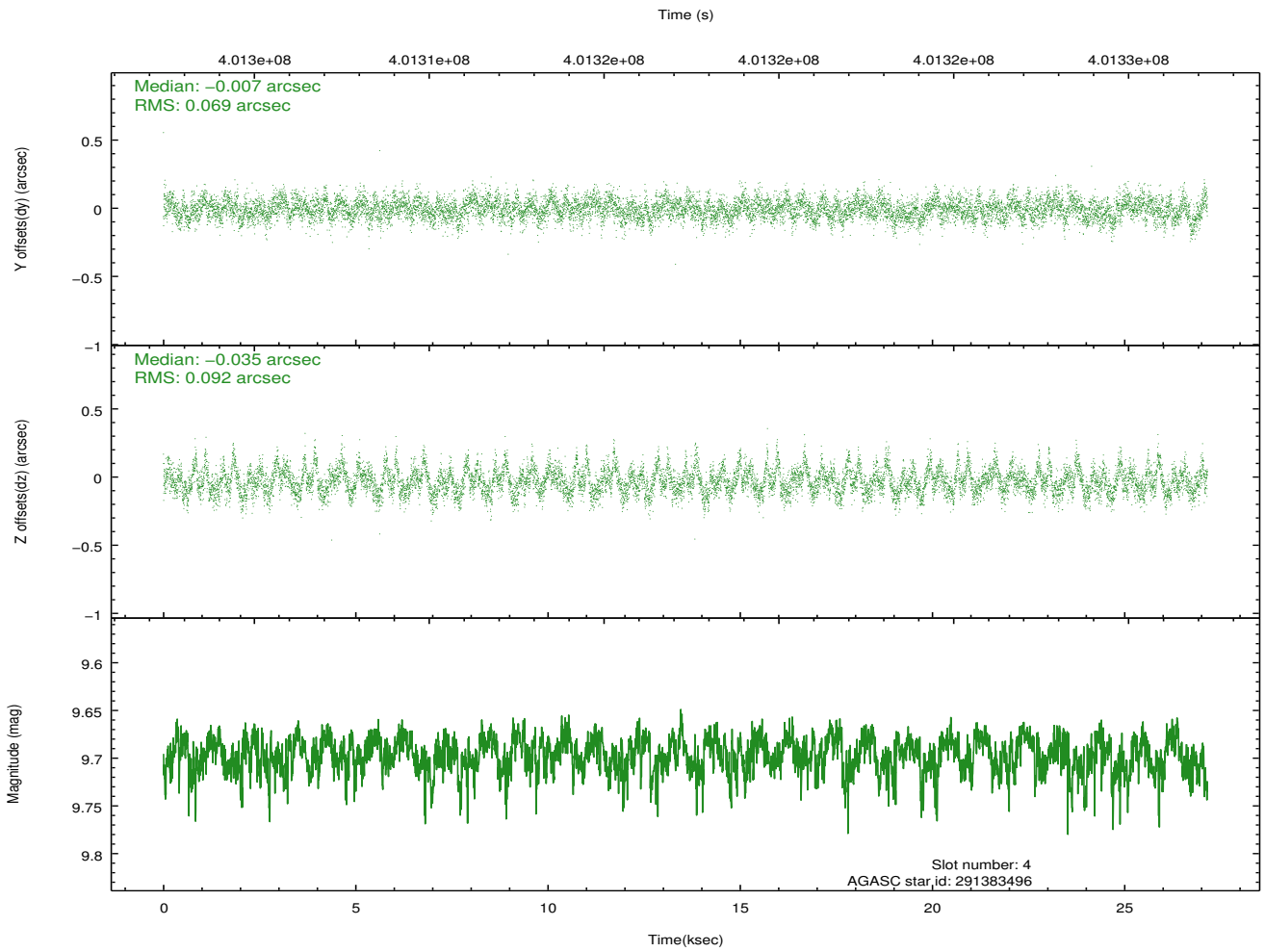
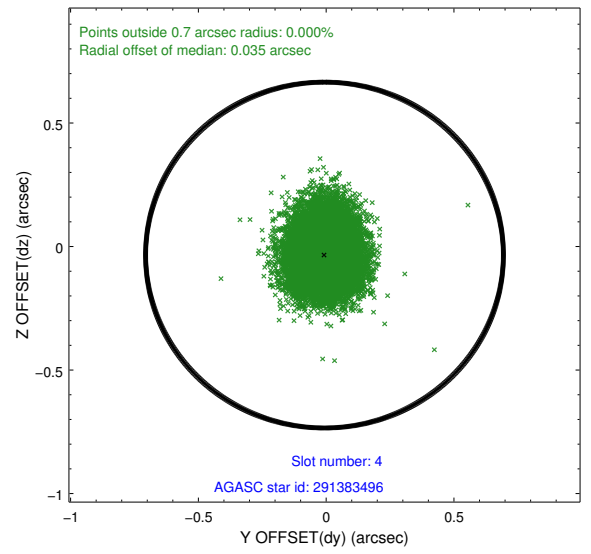
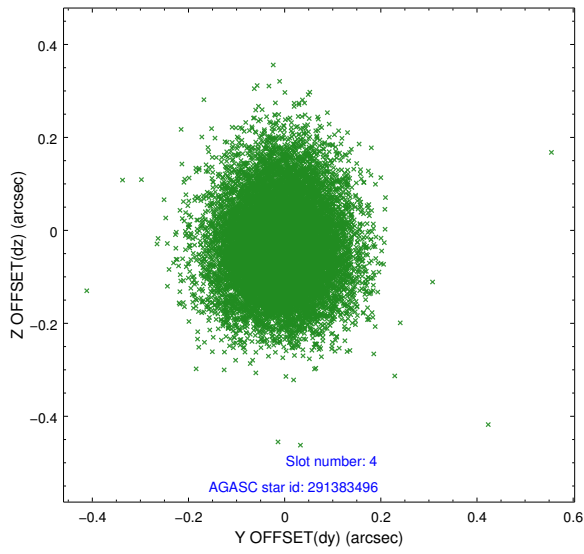
∞

2.4 Star Slots

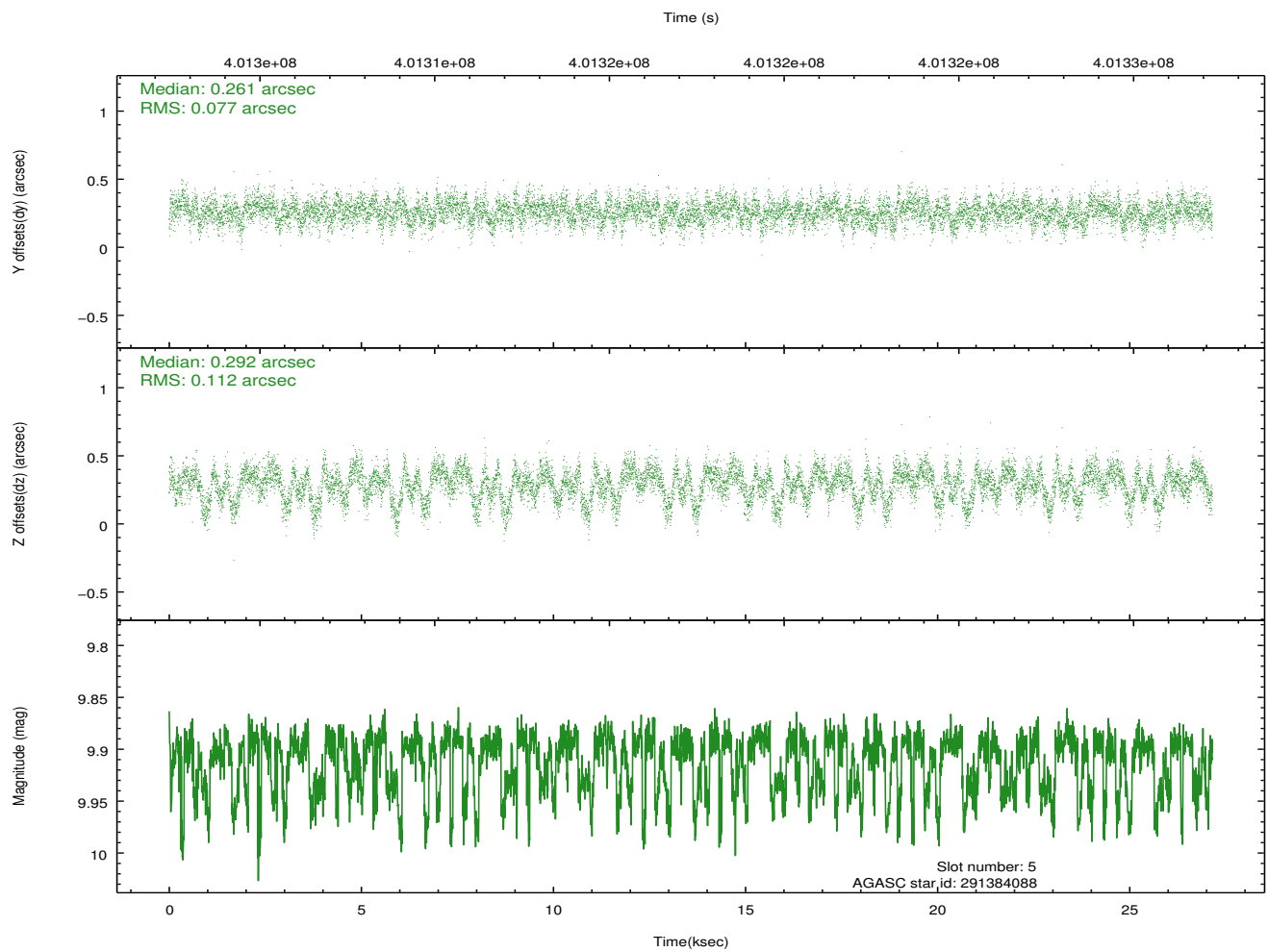
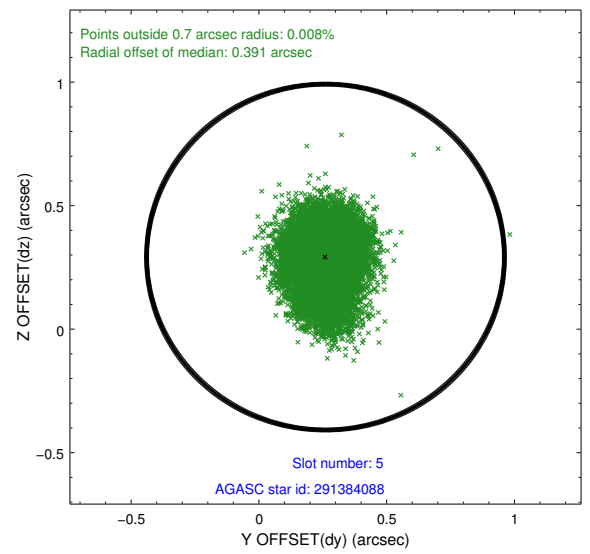
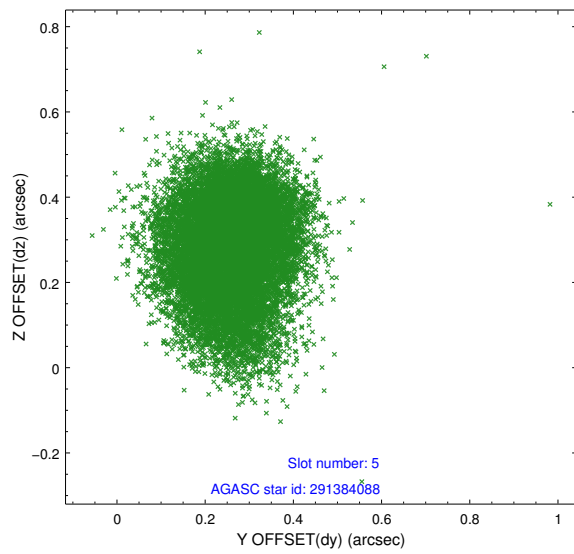
2.4.1 Slot 3



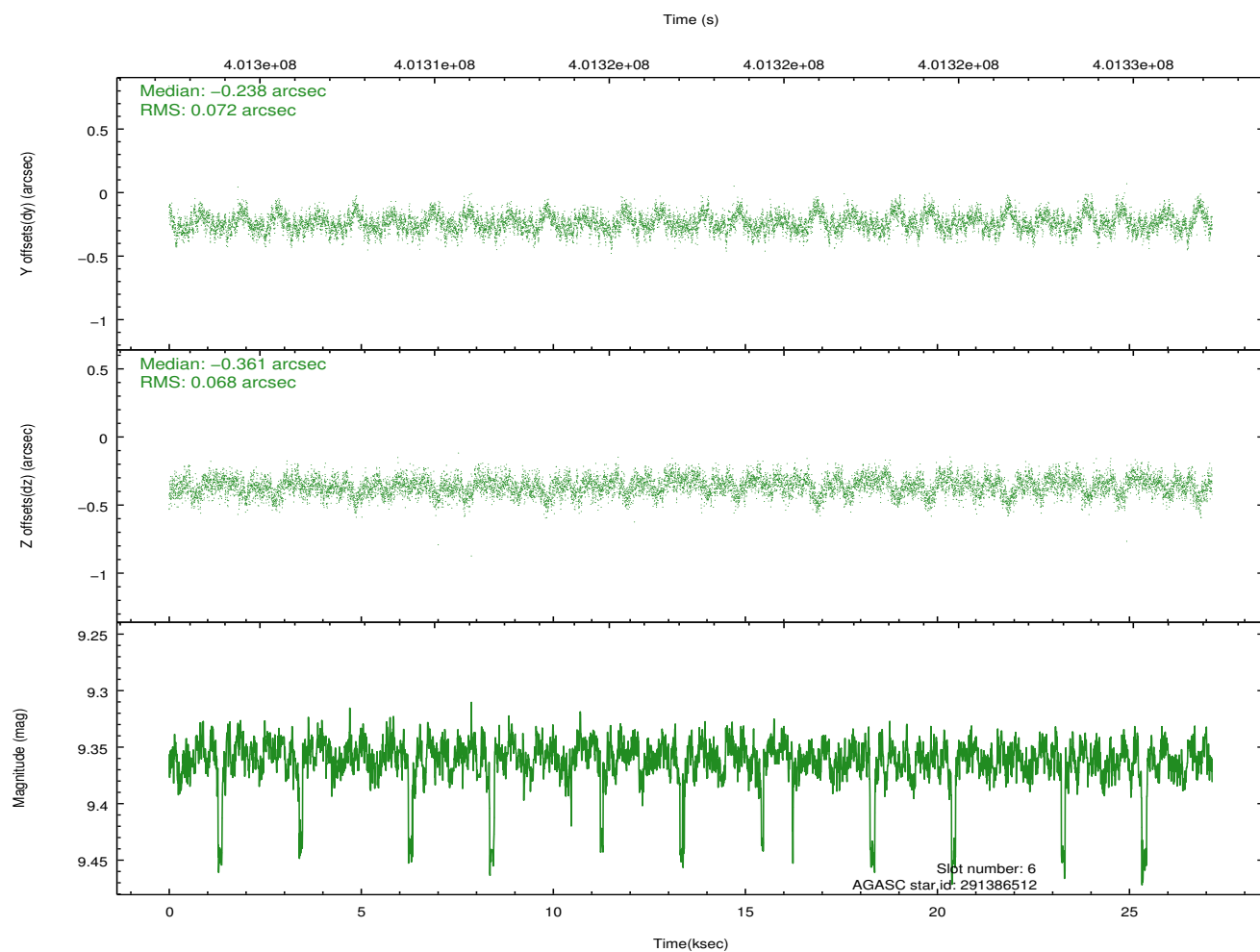
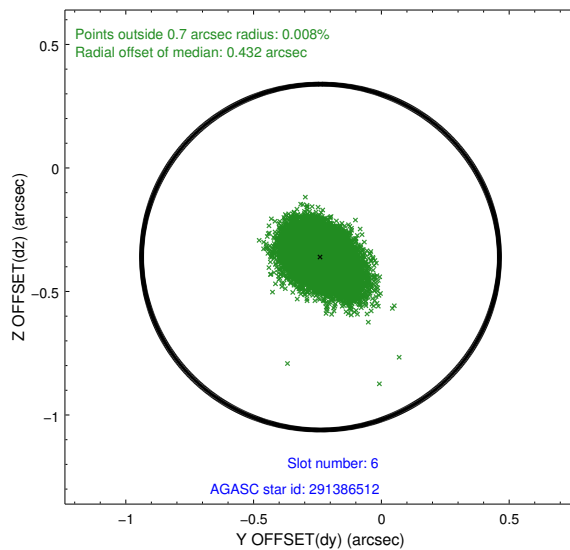
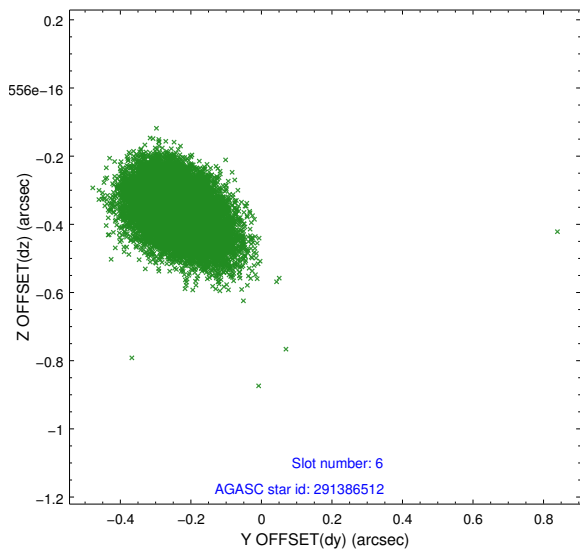
2.4.2 Slot 4



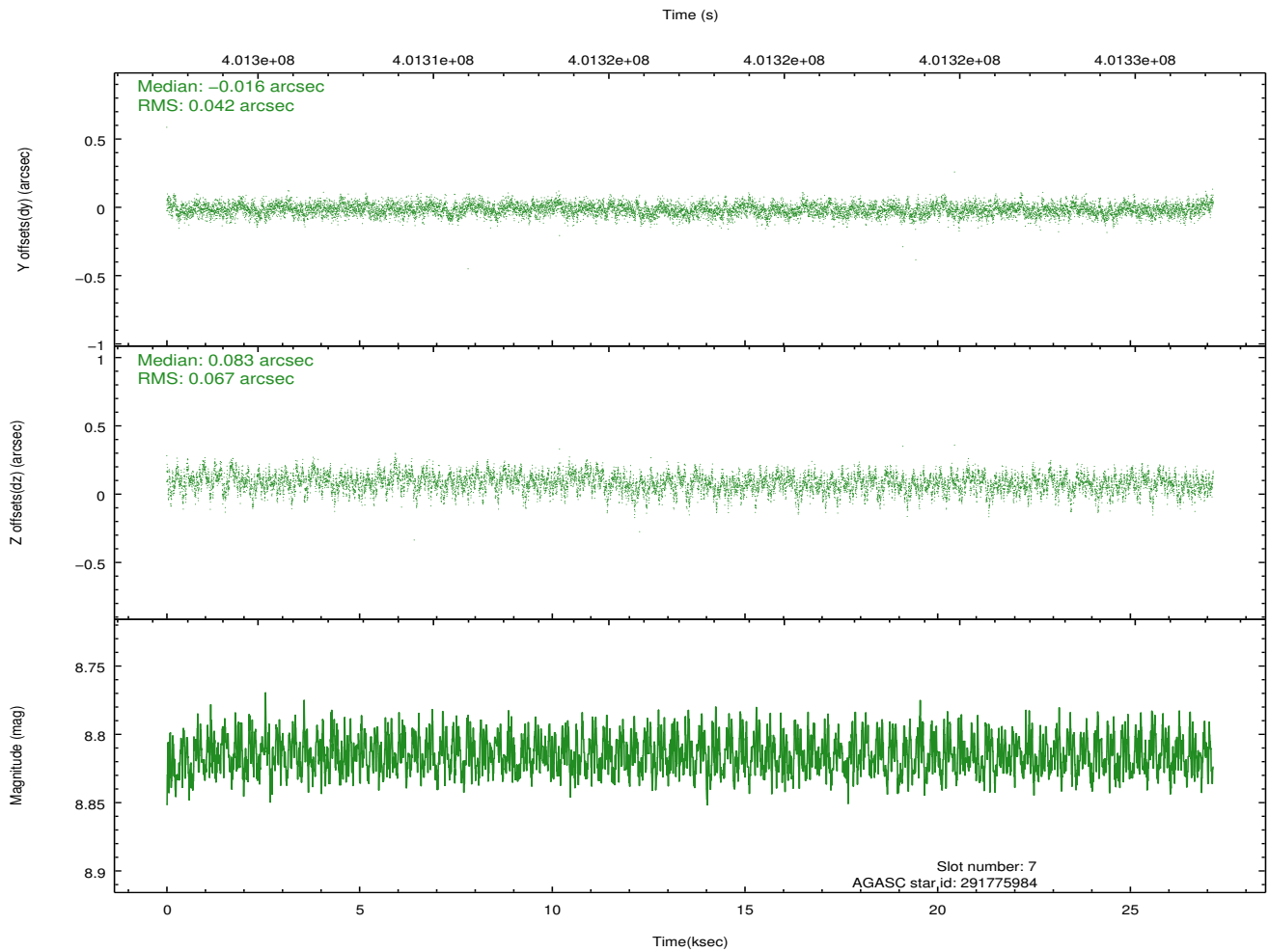
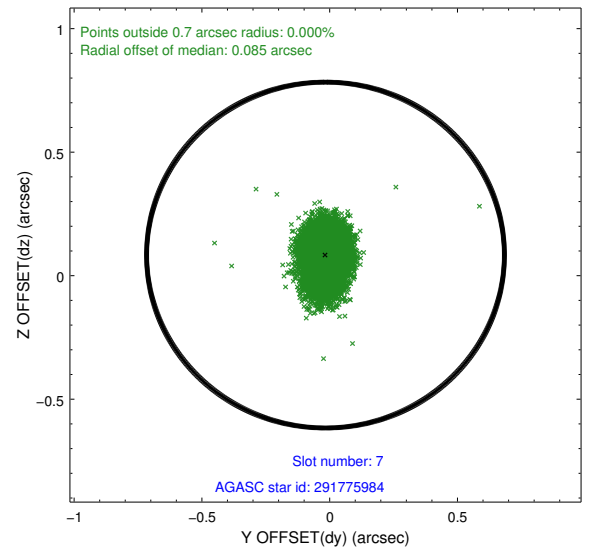
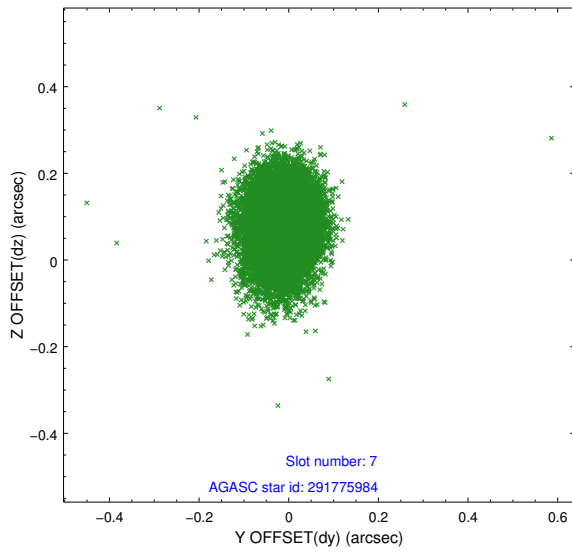
2.4.3 Slot 5



2.4.4 Slot 6

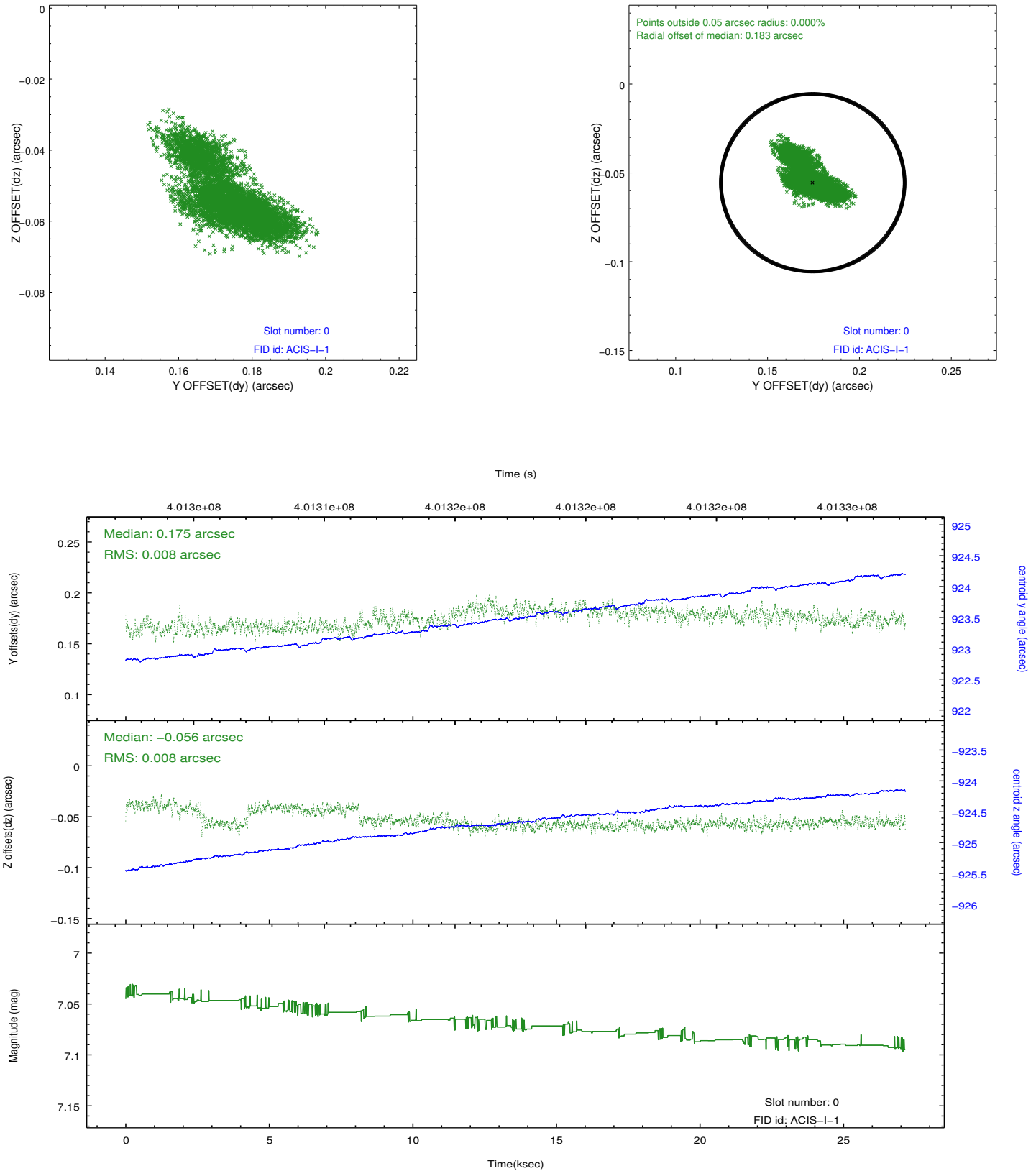


2.4.5 Slot 7

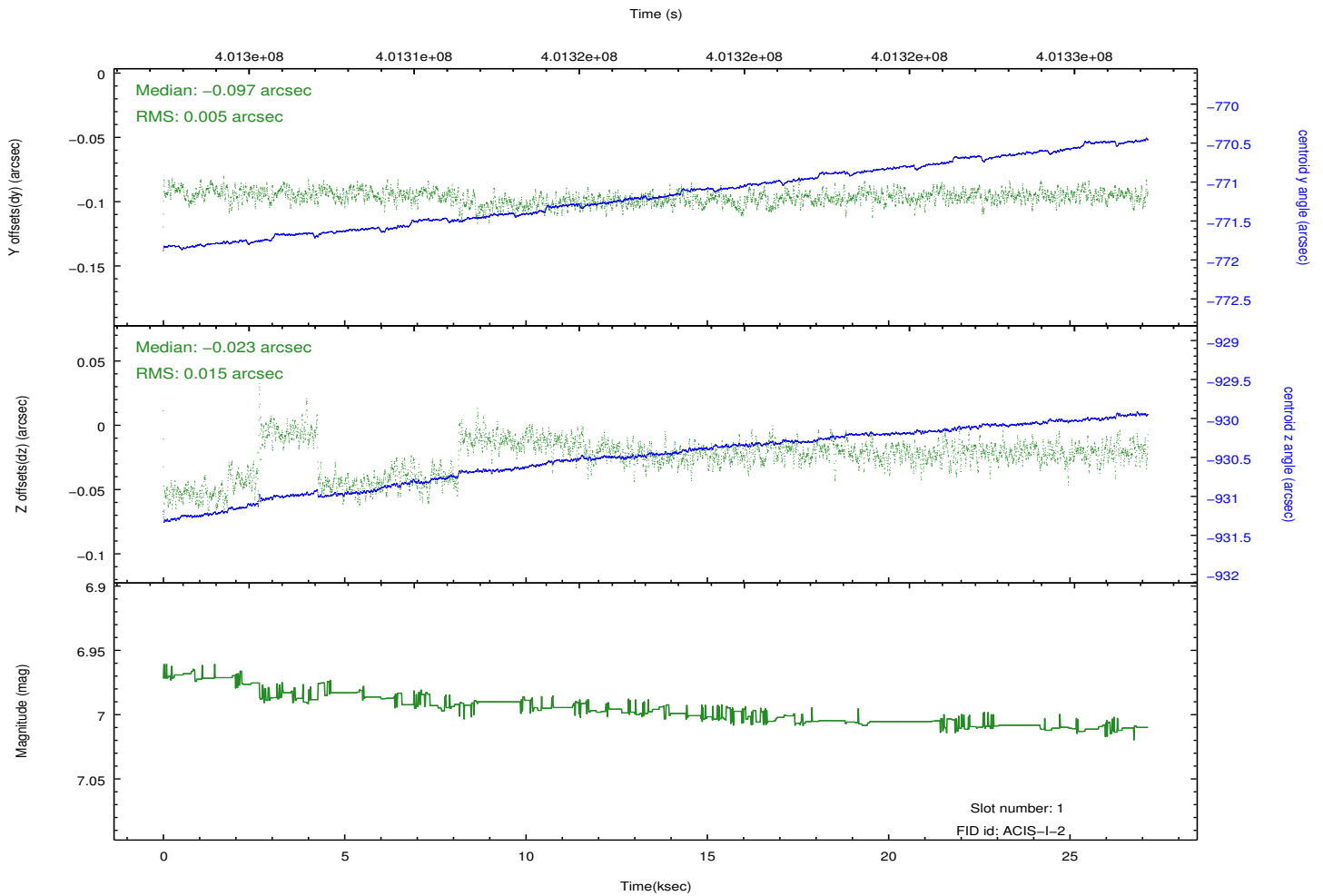
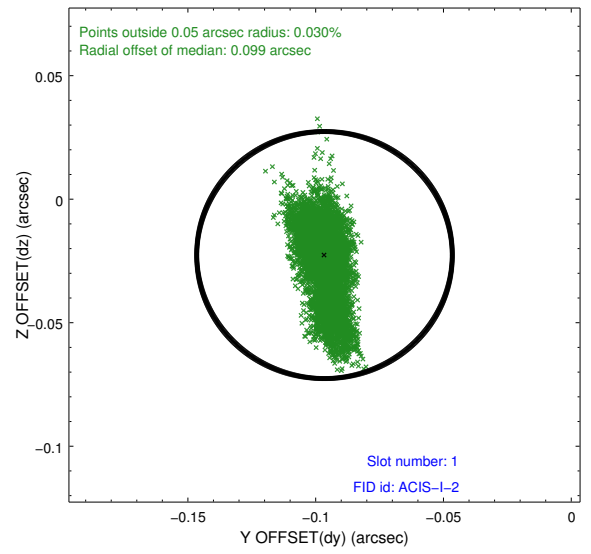
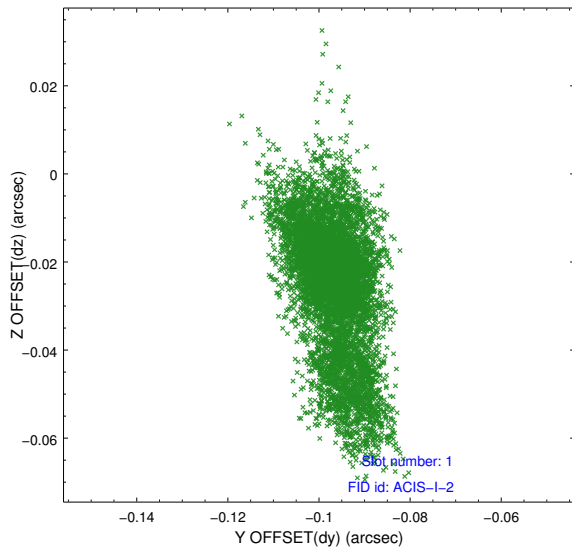


2.5 FID Slots

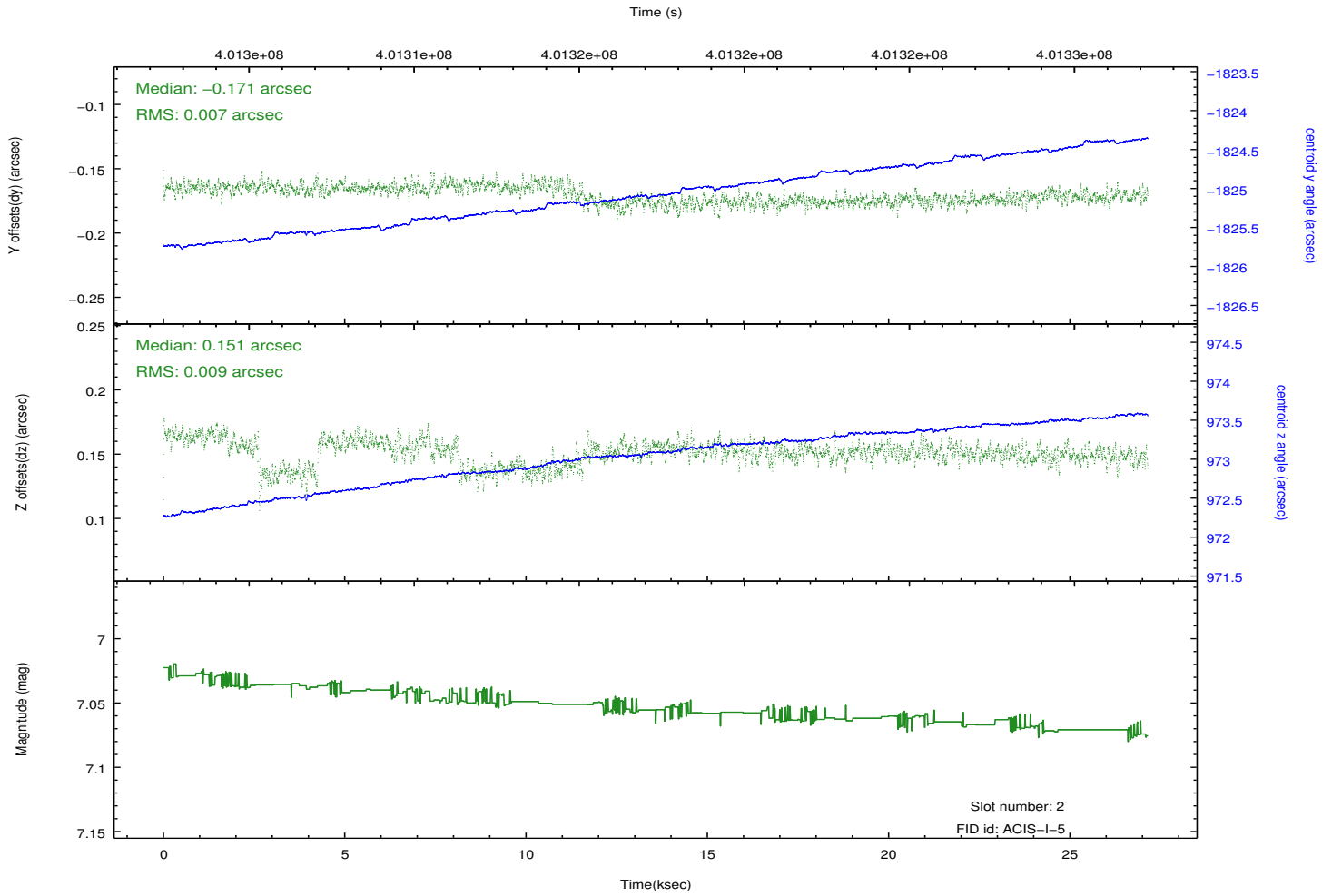
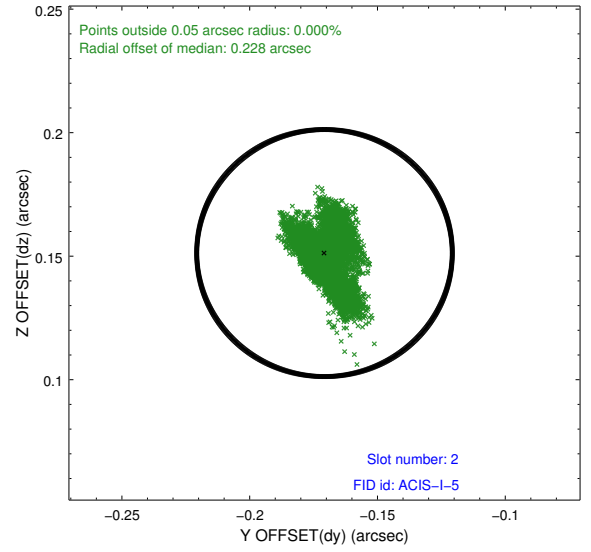
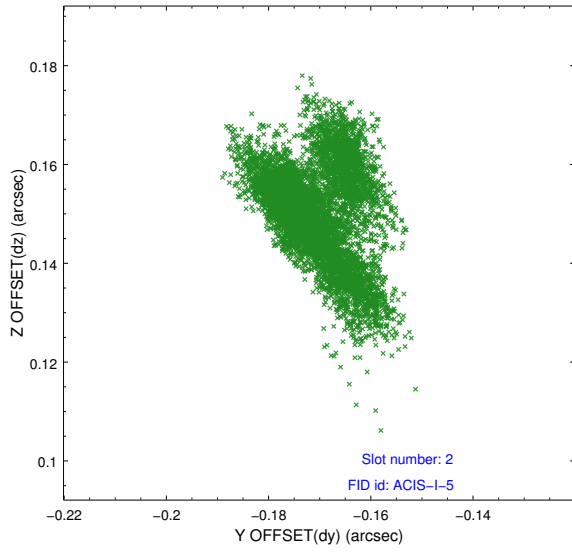
2.5.1 Slot 0



2.5.2 Slot 1



2.5.3 Slot 2



A Summary

A.1 Status

V&V Scientist	Jen Lauer
V&V Date (YYYY-MM-DD)	2012.07.11
V&V Edition	1
V&V Disposition and Status	OK
V&V Charge Time	27.047459187686

A.2 Comments