

V&V Reference Report

L2 ASCDS Version : 8.4.3

Observation 12529 - L2 Version 4
Chandra X-Ray Center

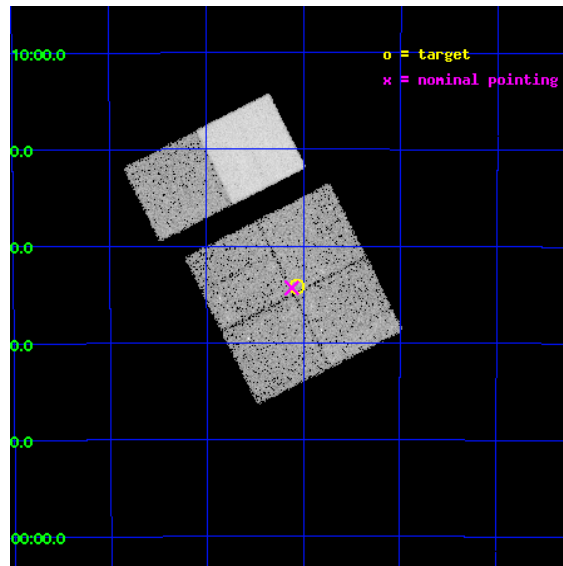
L2 Processing Date : Feb 12 2012

Contents

1	Front	2
2	OBI	3
2.1	OBI	3
2.1.1	Images	3
2.1.2	Bias	3
2.1.3	Parameters	4
2.1.4	Events	4
2.2	Compared Parameters	5
2.3	Aspect	6
2.4	Star Slots	9
2.4.1	Slot 3	9
2.4.2	Slot 4	10
2.4.3	Slot 5	11
2.4.4	Slot 6	12
2.4.5	Slot 7	13
2.5	FID Slots	14
2.5.1	Slot 0	14
2.5.2	Slot 1	15
2.5.3	Slot 2	16
A	Summary	17
A.1	Status	17
A.2	Comments	17

1 Front

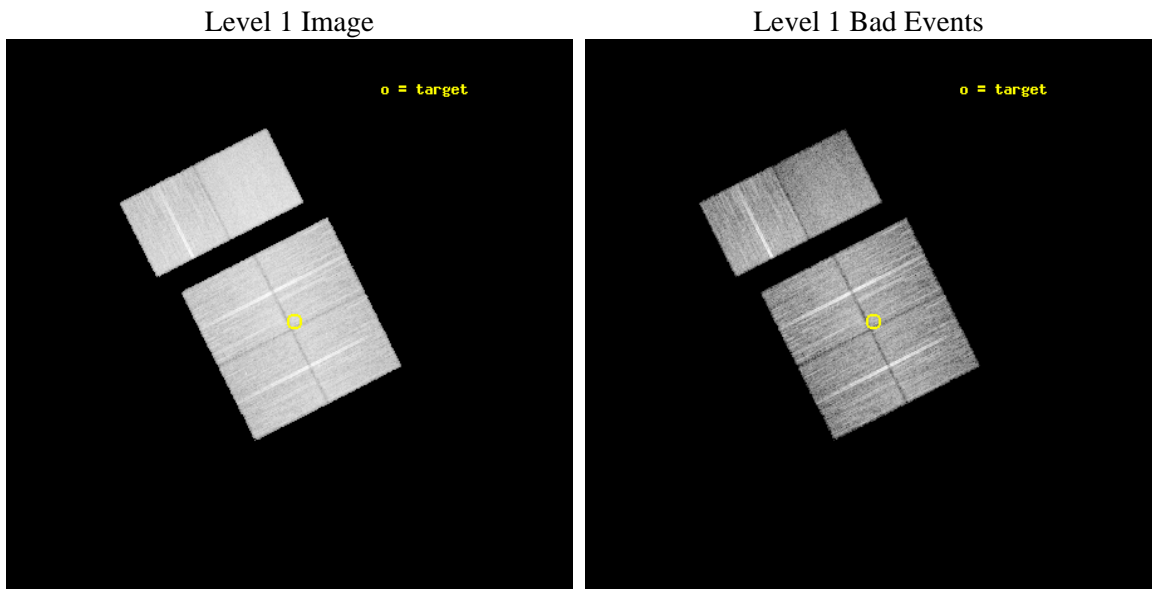
seq_num	401270	Sequence number
obs_id	12529	Observation id
title	Census of the Normal Spiral Arm Region	Proposal title
observer	Dr. John Tomsick	Principal investigator
object	Norma Region	Source name
dtcycle	0	
cycle	P	events from which exps? Prim/Second/Both
ra_targ	248.767893	Observer's specified target RA [deg]
dec_targ	-47.570723	Observer's specified target Dec [deg]
ra_nom	248.77974962614	Nominal RA [deg]
dec_nom	-47.572055928675	Nominal Dec [deg]
roll_nom	333.21744120117	Nominal Roll [deg]
revision	4	Processing version of data
ontime	19257.599928319	Sum of GTIs [s]
livetime	19013.748602493	Livetime [s]
ontime0	19257.599928319	Sum of GTIs [s]
ontime1	19257.599928319	Sum of GTIs [s]
ontime2	19257.599928319	Sum of GTIs [s]
ontime3	19257.599928319	Sum of GTIs [s]
ontime6	19257.599928319	Sum of GTIs [s]
ontime7	19257.599928319	Sum of GTIs [s]
l2events	133712	Number of level 2 events



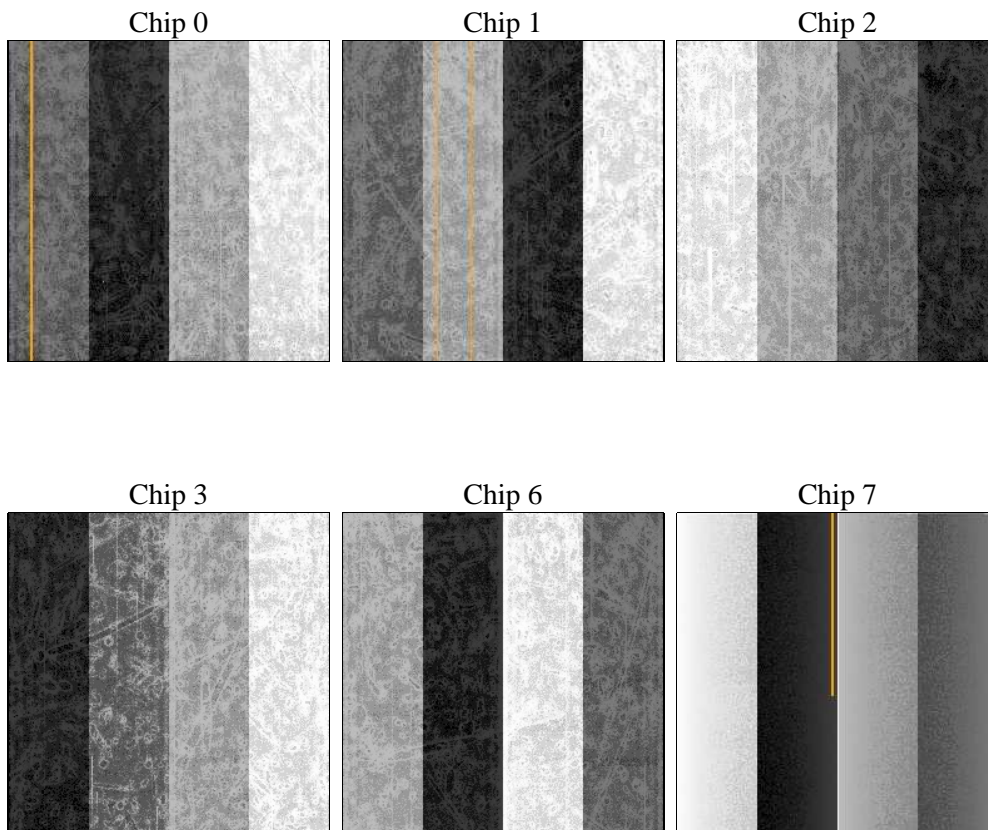
2 OBI

2.1 OBI

2.1.1 Images



2.1.2 Bias



2.1.3 Parameters

obi_num	0	Obi number	sched_exp_time	19500.000000	[s] Scheduled observation exposure time
ascdsver	8.4.3	Processing system revision	ontime	19257.599928319	Sum of GTIs [s]
caldsver	4.4.7	 	ontime0	19257.599928319	Sum of GTIs [s]
date	2012-02-12T11:48:54	Date and time of file creation	ontime1	19257.599928319	Sum of GTIs [s]
revision	4	Processing version of data	ontime2	19257.599928319	Sum of GTIs [s]
			ontime3	19257.599928319	Sum of GTIs [s]
			ontime6	19257.599928319	Sum of GTIs [s]
			ontime7	19257.599928319	Sum of GTIs [s]
			l1events	763181	Number of level 1 events

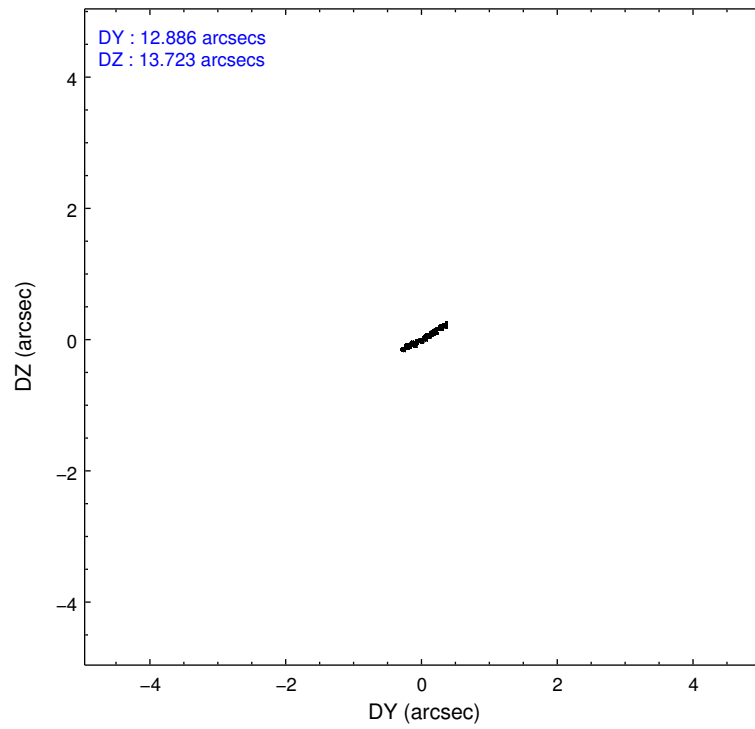
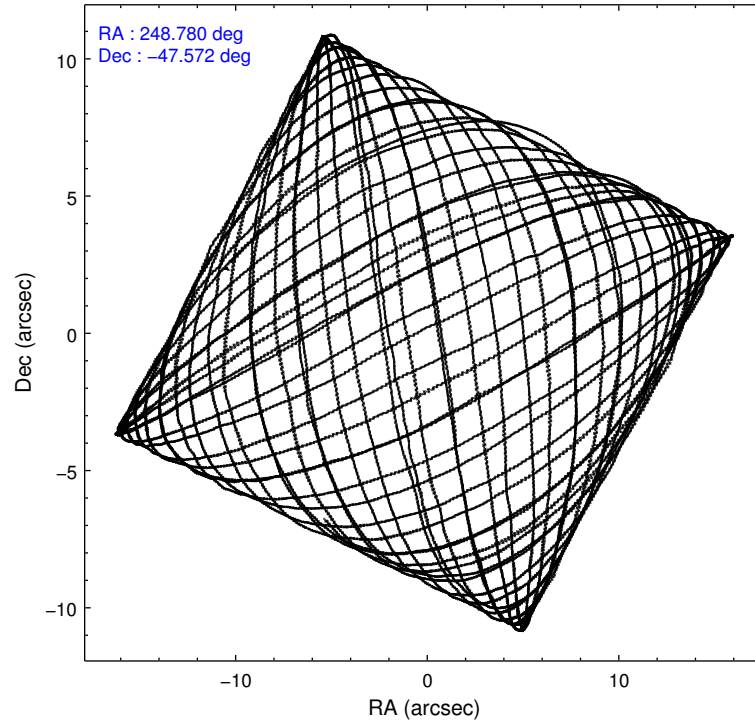
2.1.4 Events

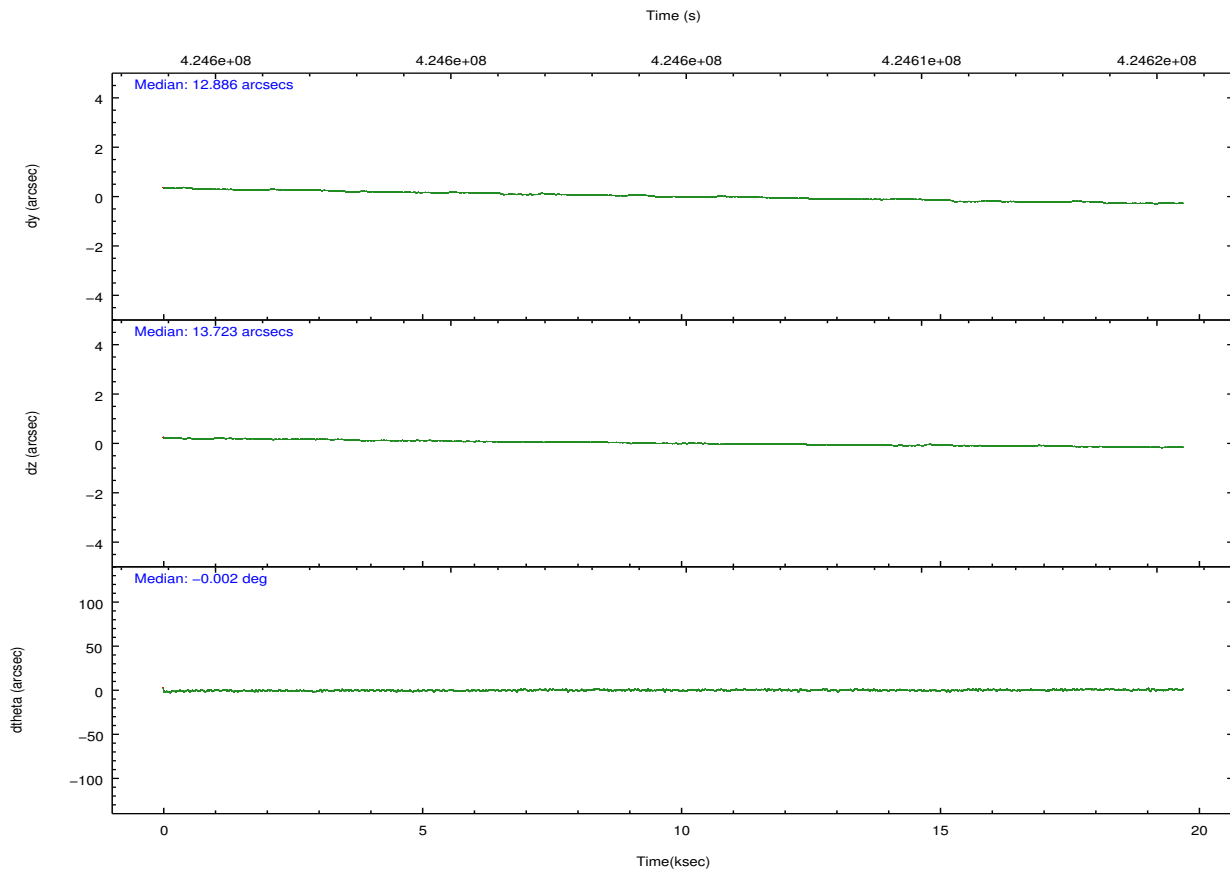
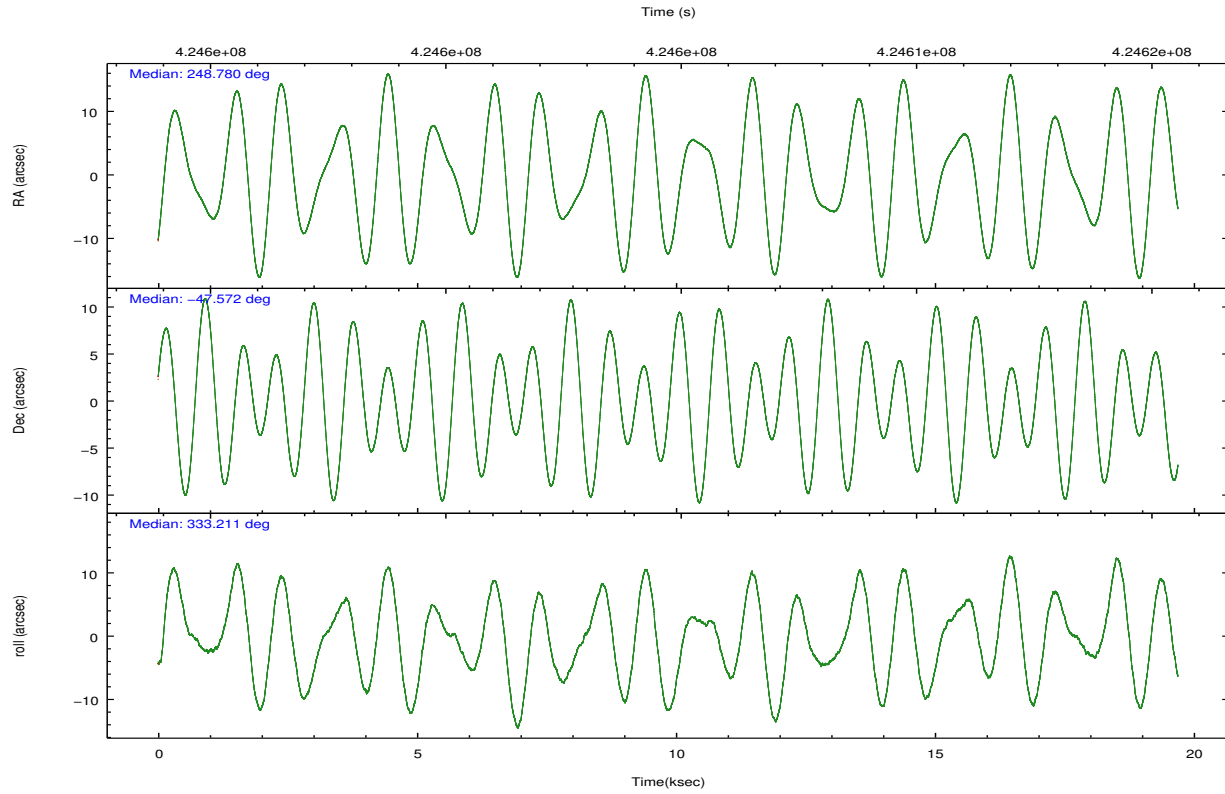
	ccd 0	ccd 1	ccd 2	ccd 3	ccd 6	ccd 7		ccd 0	ccd 1	ccd 2	ccd 3	ccd 6	ccd 7
level 1 events	109417	115525	127813	123834	129952	156640	grade 0 events	5851	6534	6136	5764	5765	6548
rejected events	94253	99184	112390	109317	114592	85822		5%	5%	4%	4%	4%	4%
rejected %	86%	85%	87%	88%	88%	54%	grade 1 events	67	67	85	79	82	169
								0%	0%	0%	0%	0%	0%
							grade 2 events	3668	3528	3627	3065	3439	14608
								3%	3%	2%	2%	2%	9%
							grade 3 events	1481	1543	1459	1434	1511	6385
								1%	1%	1%	1%	1%	4%
							grade 4 events	1391	1548	1491	1456	1408	6438
								1%	1%	1%	1%	1%	4%
							grade 5 events	4939	5568	4724	5894	5827	16182
								4%	4%	3%	4%	4%	10%
							grade 6 events	2775	3193	2712	2805	3239	36870
								2%	2%	2%	2%	2%	23%
							grade 7 events	89245	93544	107579	103337	108681	69440
								81%	80%	84%	83%	83%	44%

2.2 Compared Parameters

Parameter	Planned	Actual	Parameter	Planned	Actual
Instrument	ACIS	ACIS	Obspar format version number	7	7
Detector	ACIS-012367	ACIS-012367	Obspar file type	PREDICTED	ACTUAL
Grating	NONE	NONE	Obspar update status	NONE	UPDATED
Data mode	VFAINT	VFAINT	CCD I0 on	Y	Y
Observation mode	POINTING	POINTING	CCD I1 on	Y	Y
[deg] Pointing RA	248.739021	248.7797496261438	CCD I2 on	Y	Y
[deg] Pointing Dec	-47.573698	-47.57205592867523	CCD I3 on	Y	Y
[deg] Pointing Roll	332.978683	333.2174412011668	CCD S0 on	N	N
[mm] SIM focus pos	-0.782348	-0.7809083437167272	CCD S1 on	N	N
[mm] SIM defocus	0	0.001439871863259334	CCD S2 on	O2	Y
[mm] SIM translation stage pos	-233.592463	-233.5874344608287	CCD S3 on	O1	Y
[mm] SIM translation stage offset	0	-0.005018542100998502	CCD S4 on	N	N
[s] Observation start time (MET)	424595061.184000	424594685.2173	CCD S5 on	N	N
Observation start date	2011-06-16T07:03:15	2011-06-16T06:58:05	Number of optional ACIS chips dropped	0	0
[s] Observation end time (MET)	424614561.184000	424614695.26834	On-chip summing requested	N	N
Observation end date	2011-06-16T12:28:15	2011-06-16T12:31:35	Subarray requested	NONE	NONE
Read mode	TIMED	TIMED	Alternating exposures requested	N	N
			[s] Primary exposure time	0.000000	3.2

2.3 Aspect



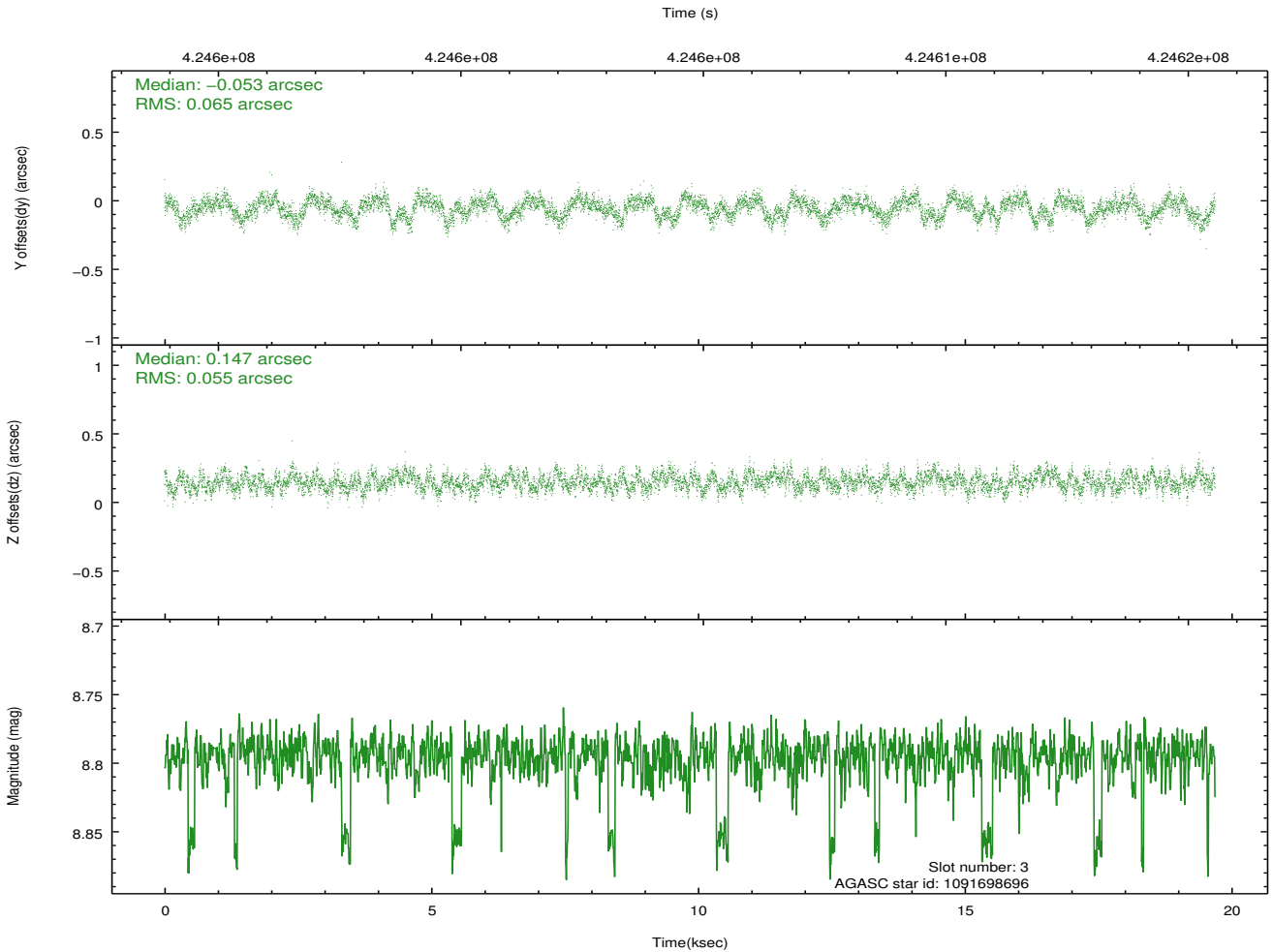
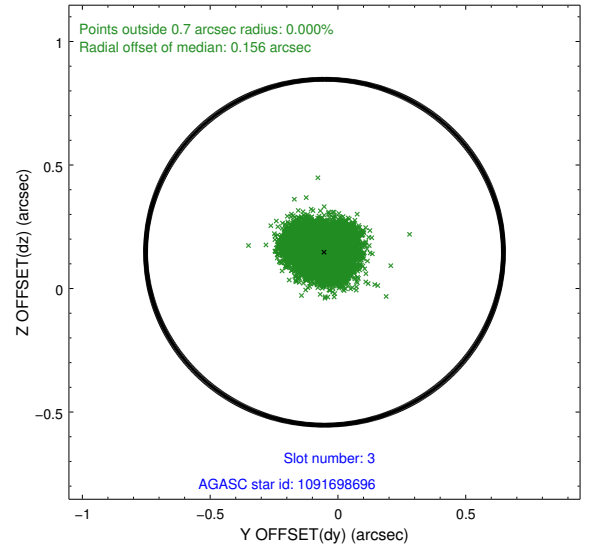
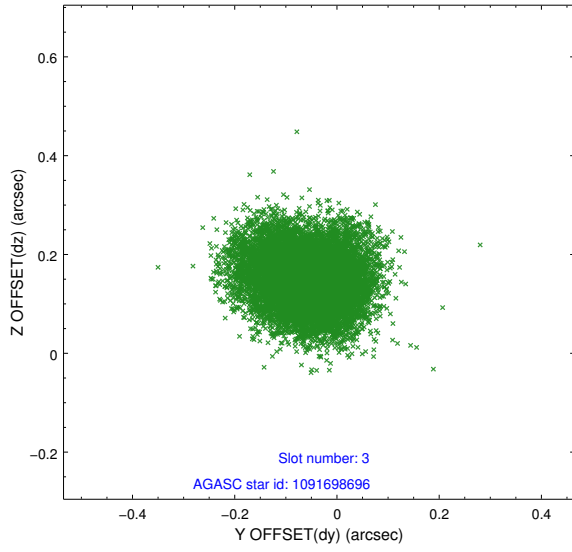


Slot Statistics

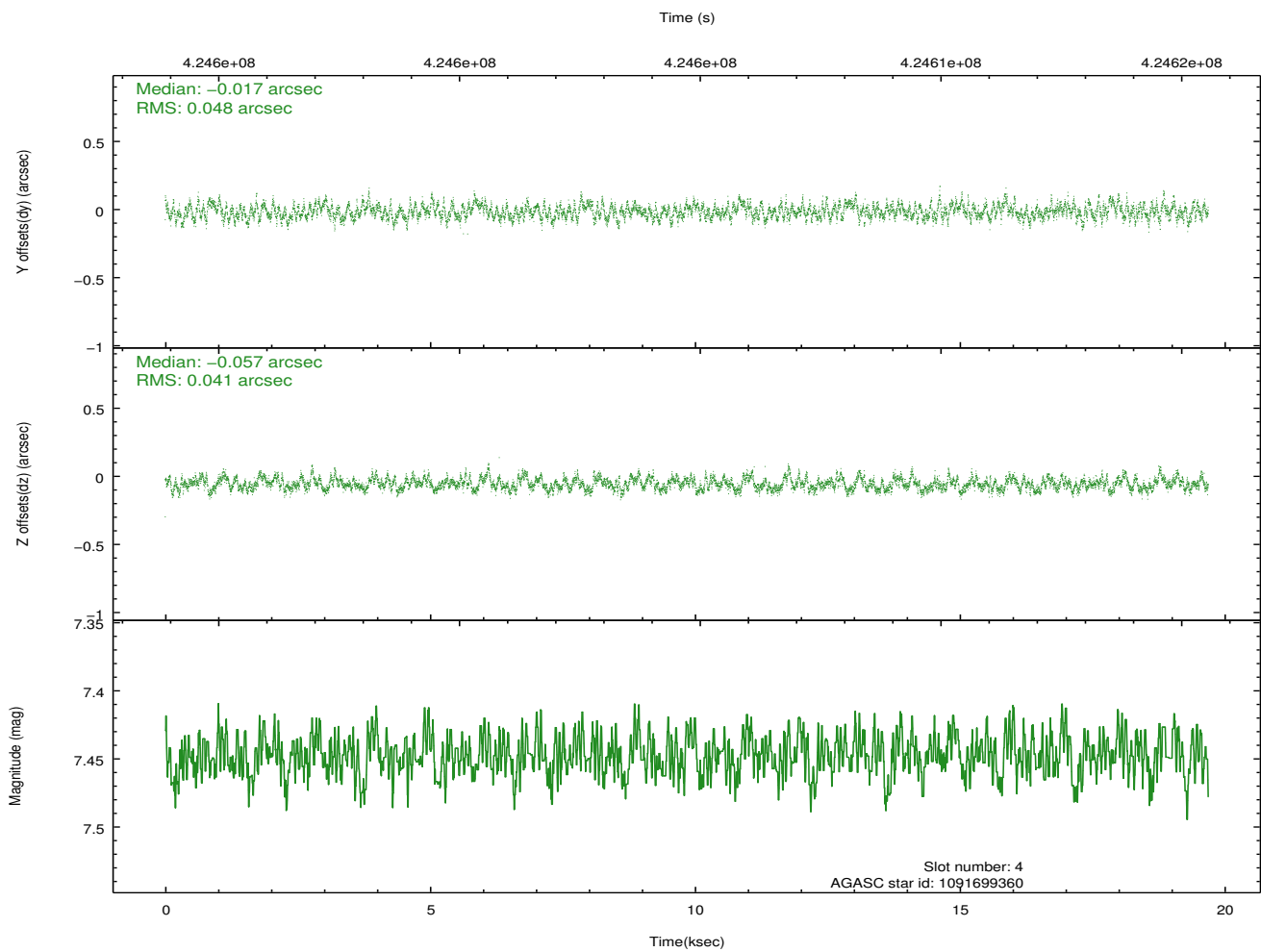
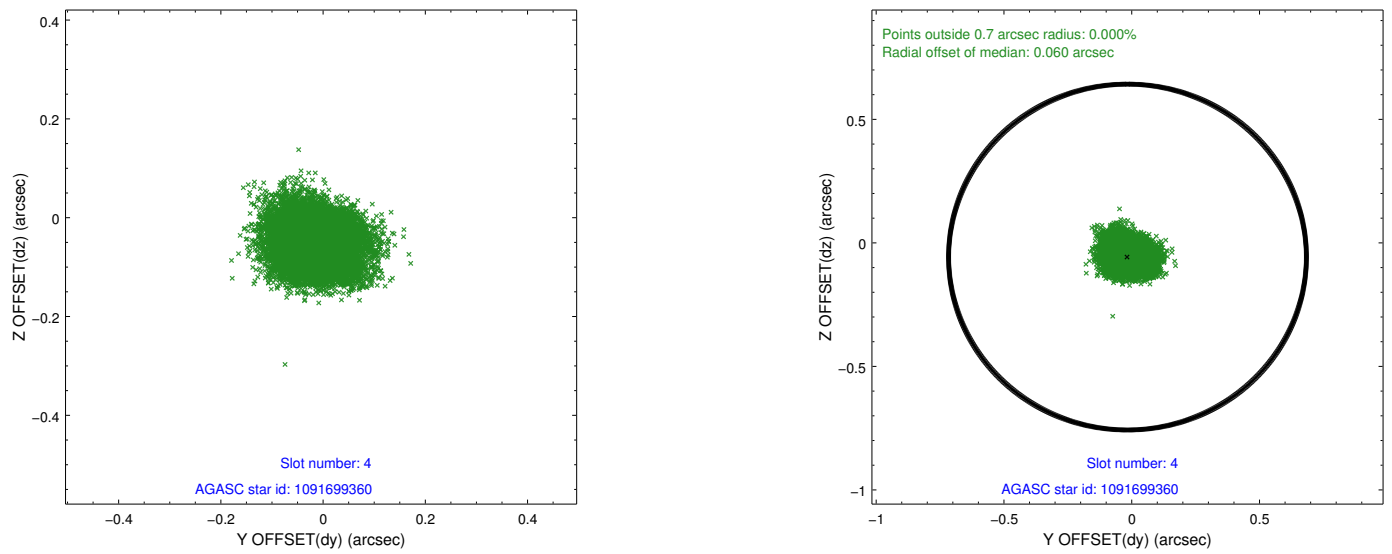
slot	status	id	mag	n_pts	med_dy	med_dz	dr1	dr2	ra	dec	mean_y	mean_z
0	FID	ACIS-I-4	7.03	4804	0.206	0.029	0.009	0.015	0.000000	0.000000	2146.78	1062.61
1	FID	ACIS-I-5	7.11	4804	-0.295	0.026	0.013	0.021	0.000000	0.000000	-1821.43	1060.50
2	FID	ACIS-I-6	7.10	4804	-0.010	0.012	0.010	0.016	0.000000	0.000000	391.93	1704.82
3	GUIDE	1091698696	8.80	9568	-0.053	0.147	0.092	0.144	248.529134	-48.079711	378.64	-1852.75
4	GUIDE	1091699360	7.45	9606	-0.017	-0.057	0.068	0.108	248.660725	-47.004364	-1102.39	1738.19
5	GUIDE	1091702440	8.72	9602	0.211	0.079	0.183	0.295	248.295809	-47.683380	-775.77	-842.48
6	GUIDE	1091709768	7.71	9606	-0.062	-0.179	0.078	0.120	249.435228	-47.706899	1723.95	332.15
7	GUIDE	1091709800	9.17	9600	-0.077	-0.001	0.093	0.152	249.801955	-47.310212	1889.27	2007.17

2.4 Star Slots

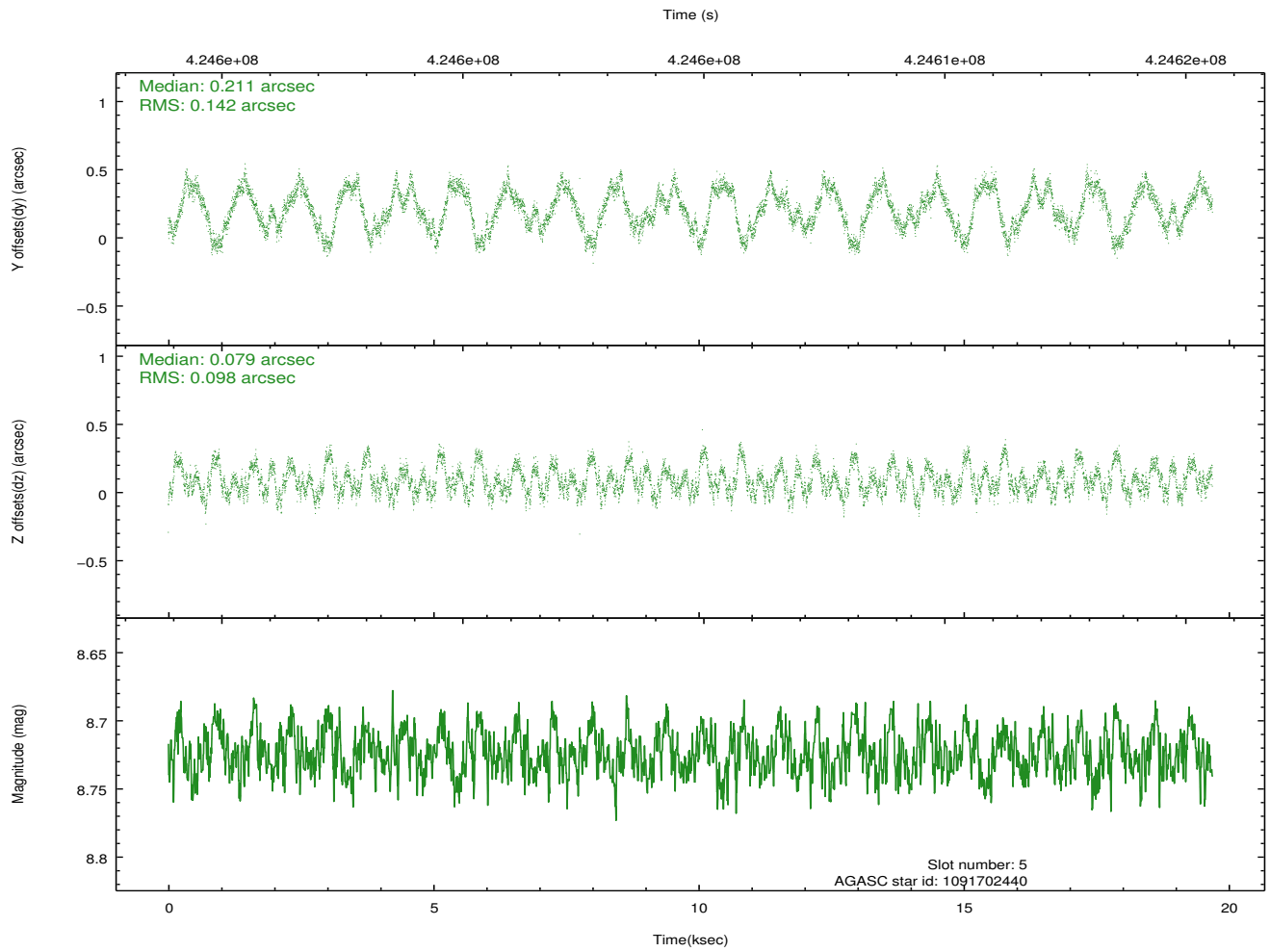
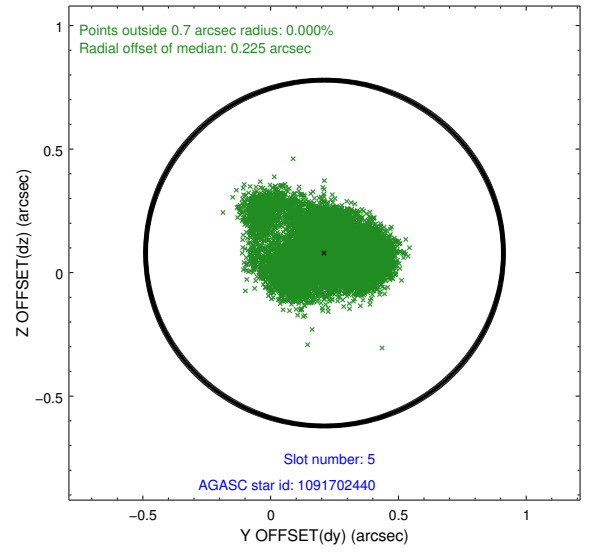
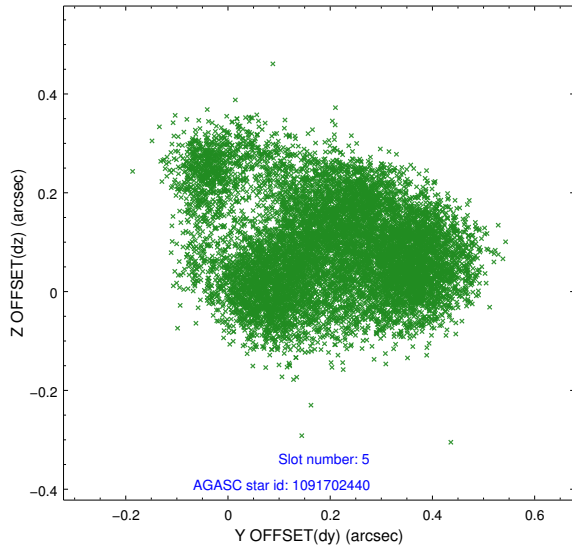
2.4.1 Slot 3



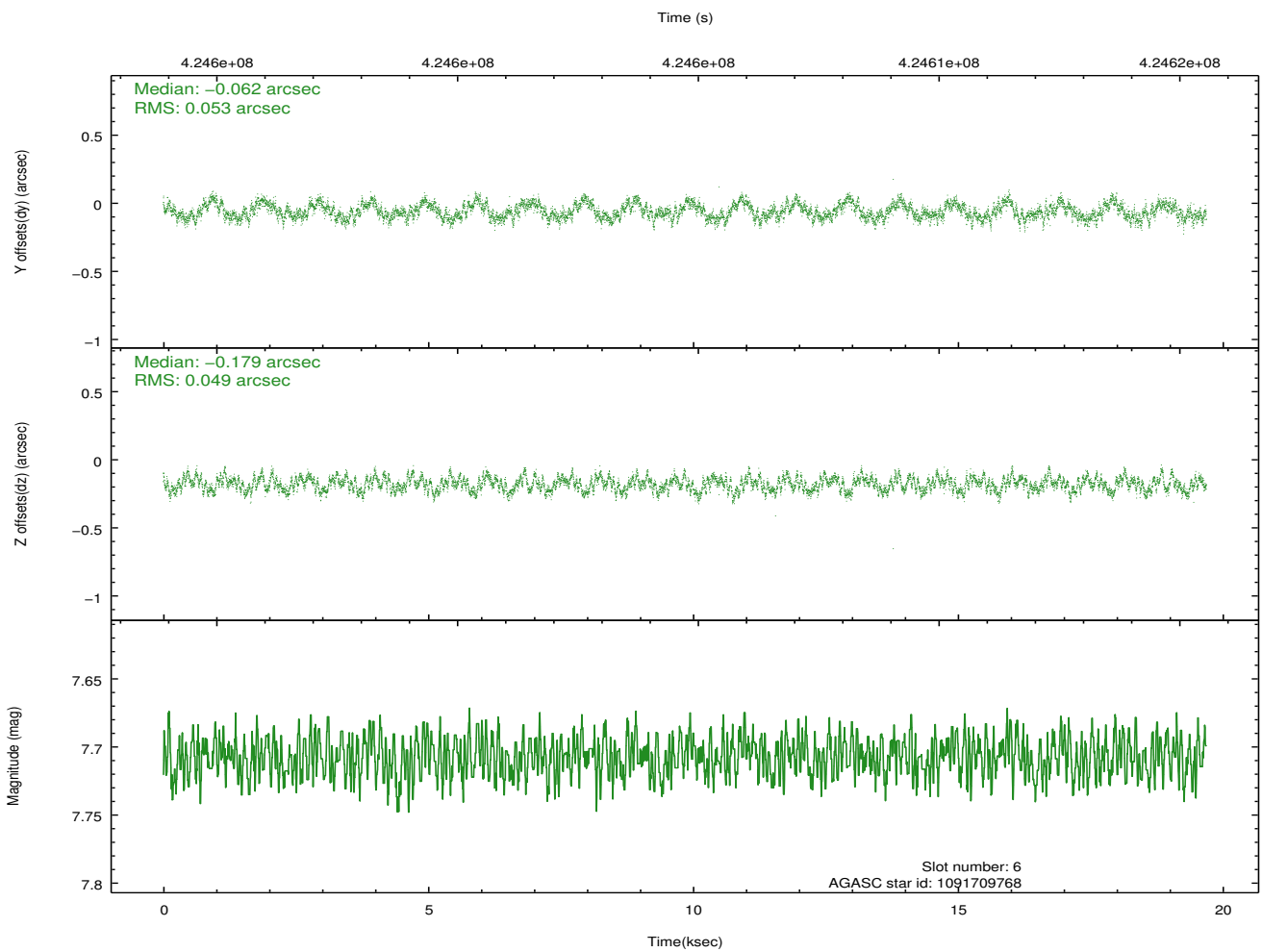
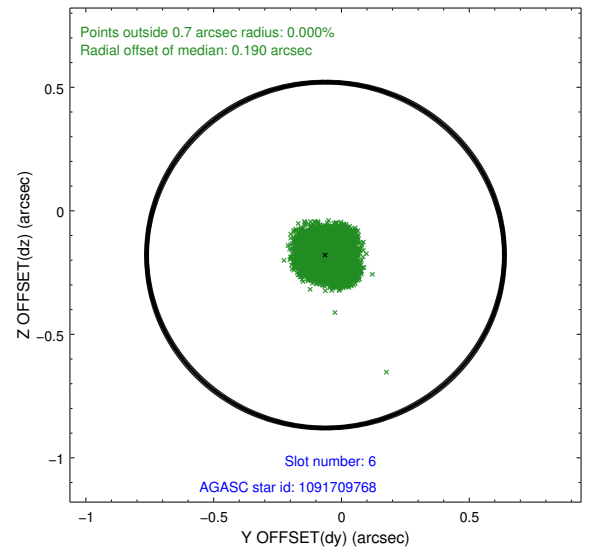
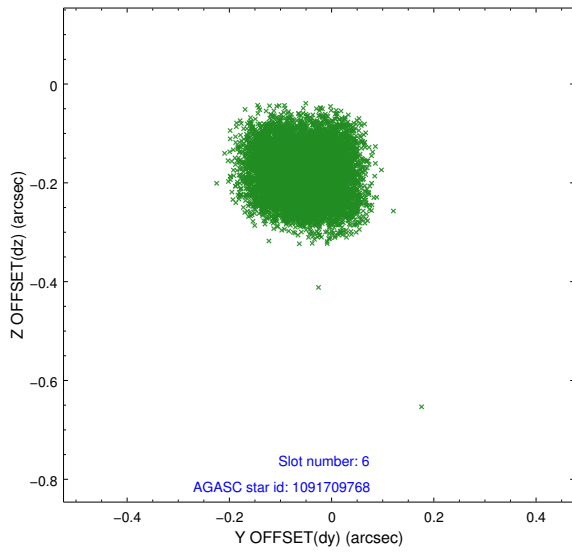
2.4.2 Slot 4



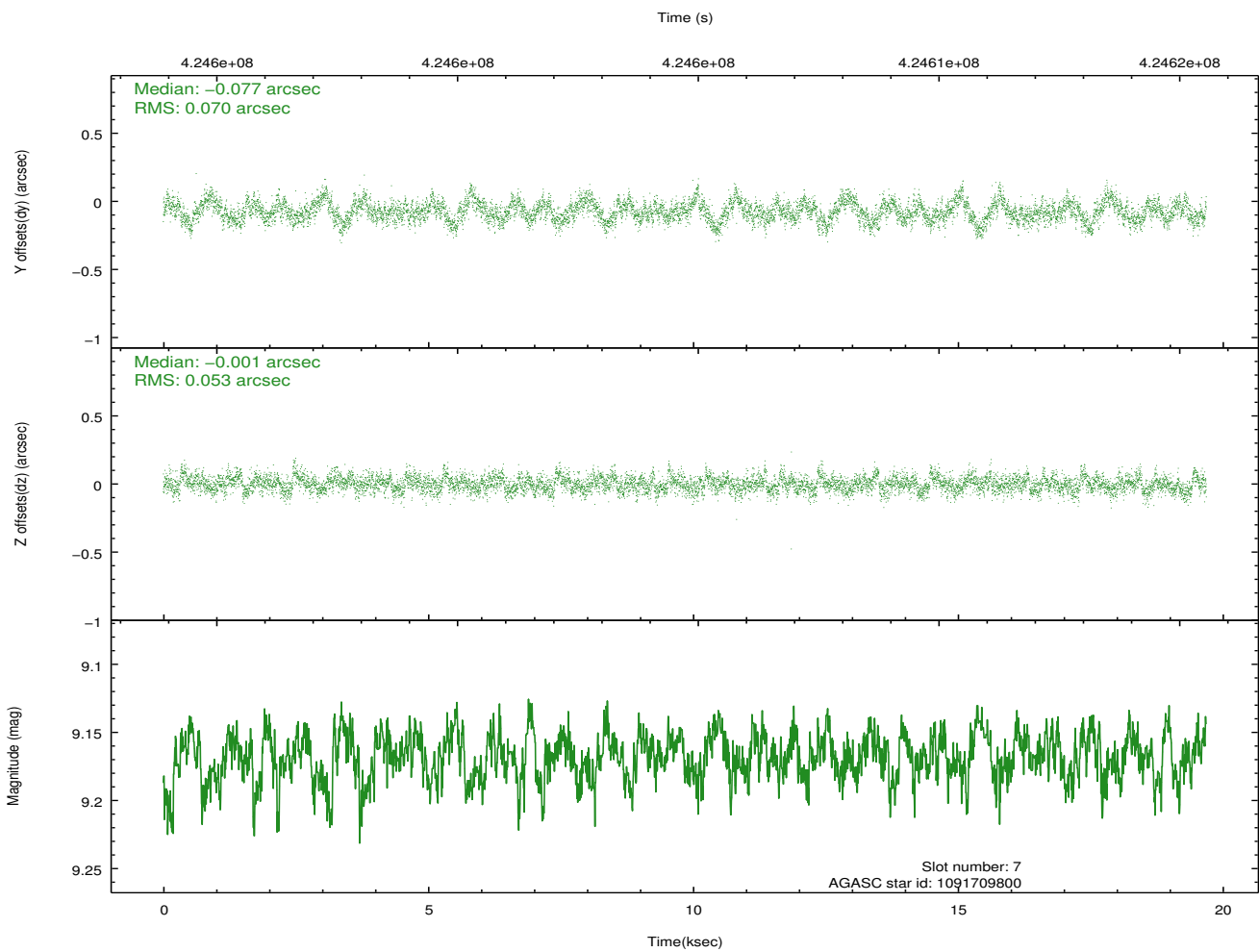
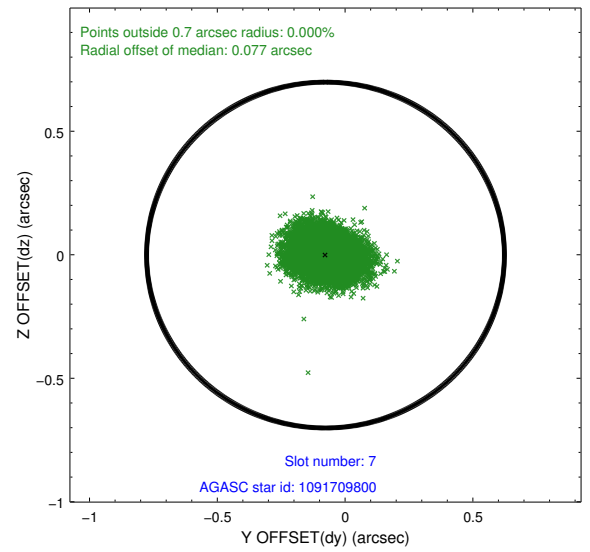
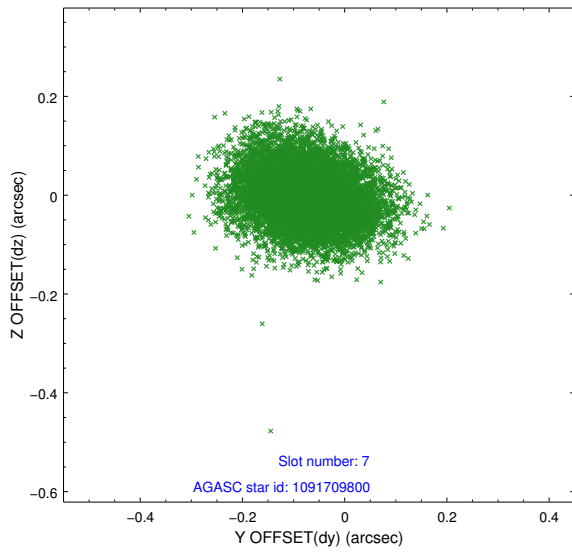
2.4.3 Slot 5



2.4.4 Slot 6

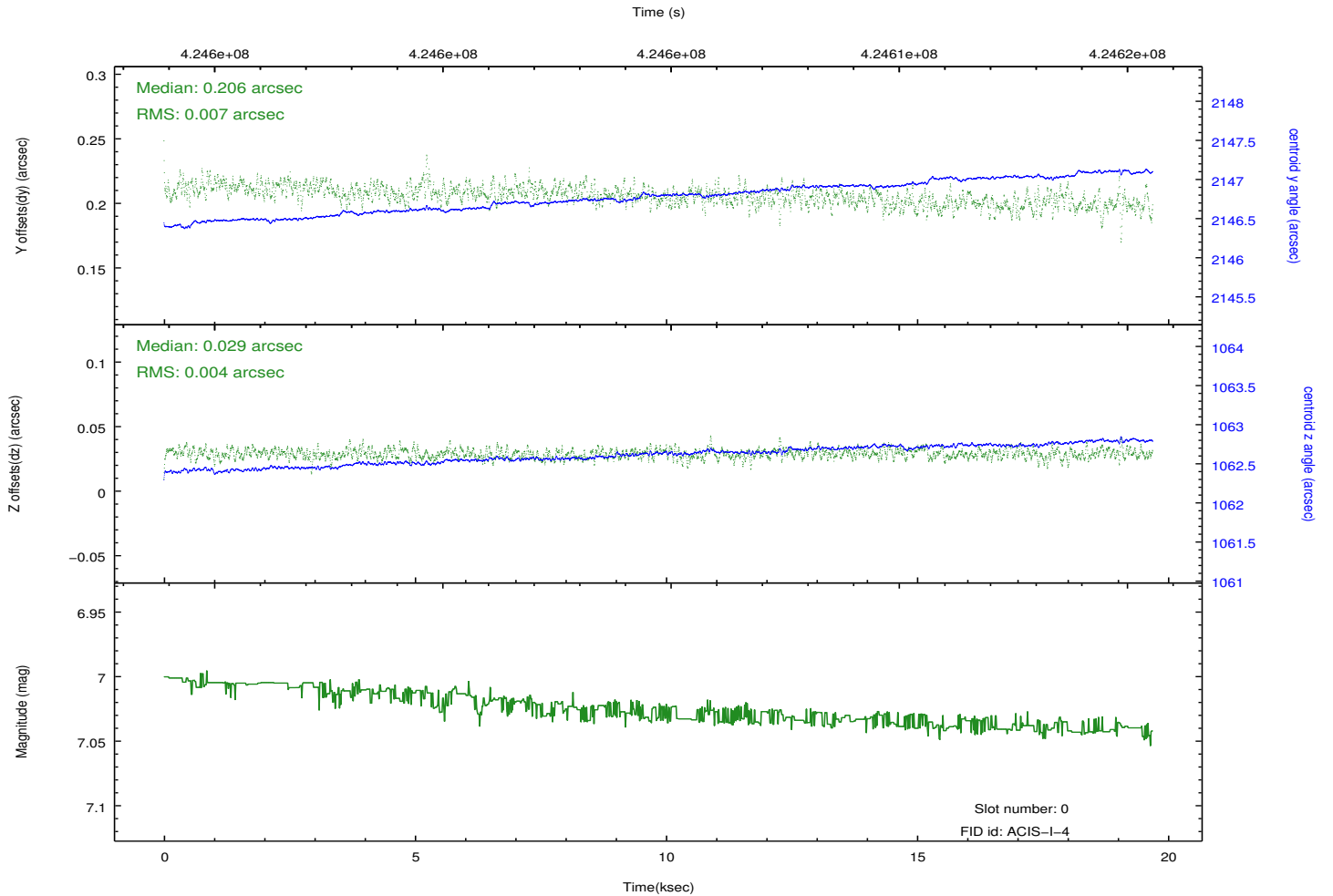
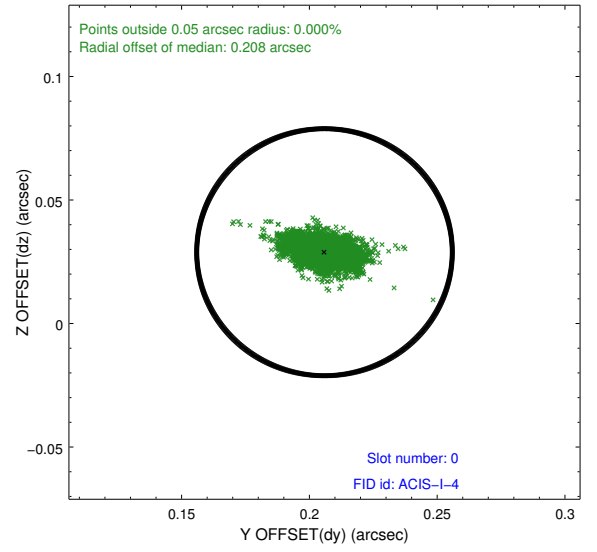
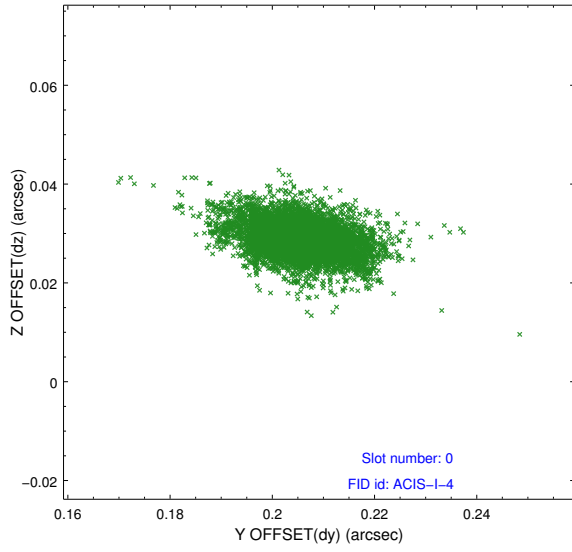


2.4.5 Slot 7

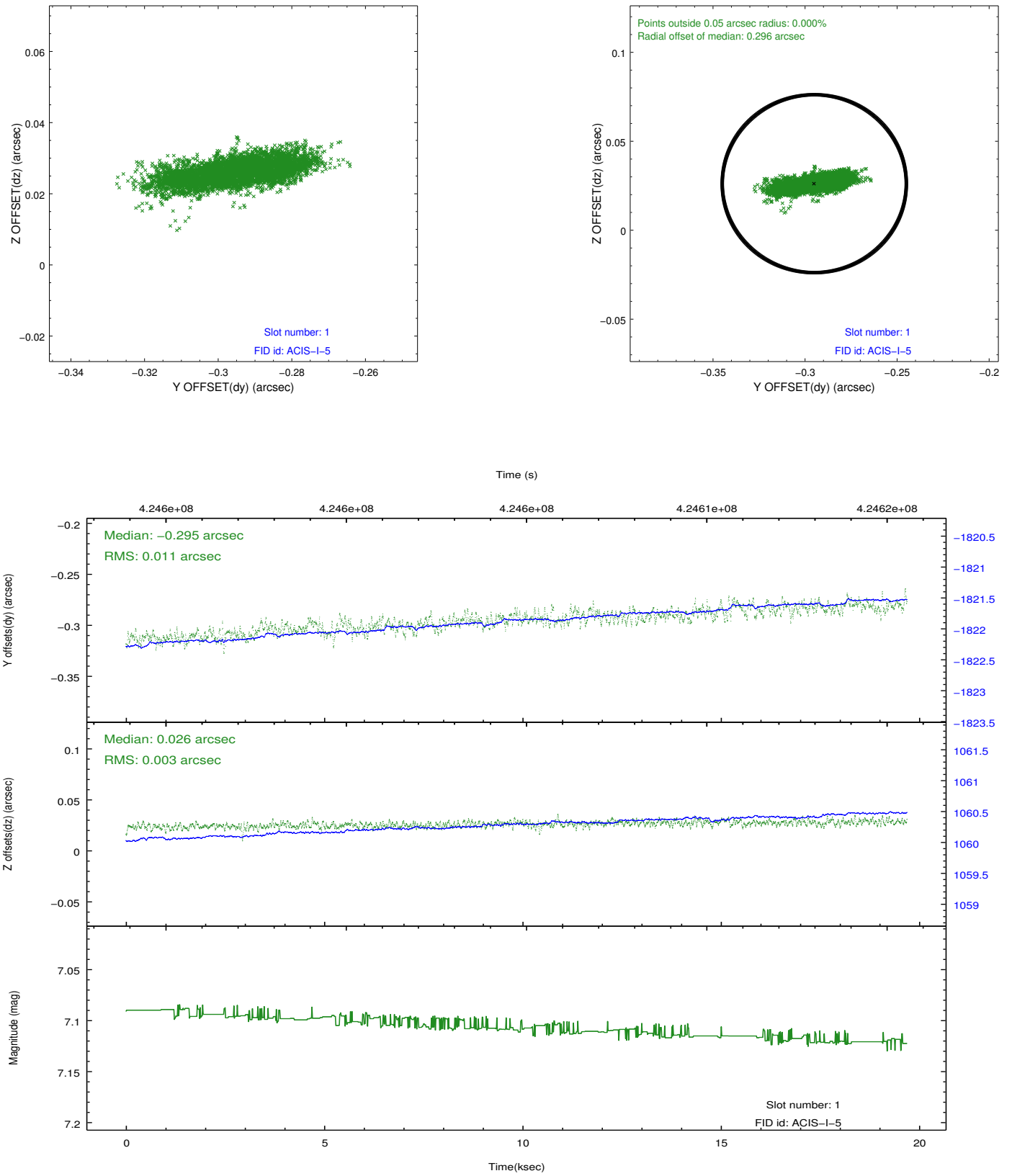


2.5 FID Slots

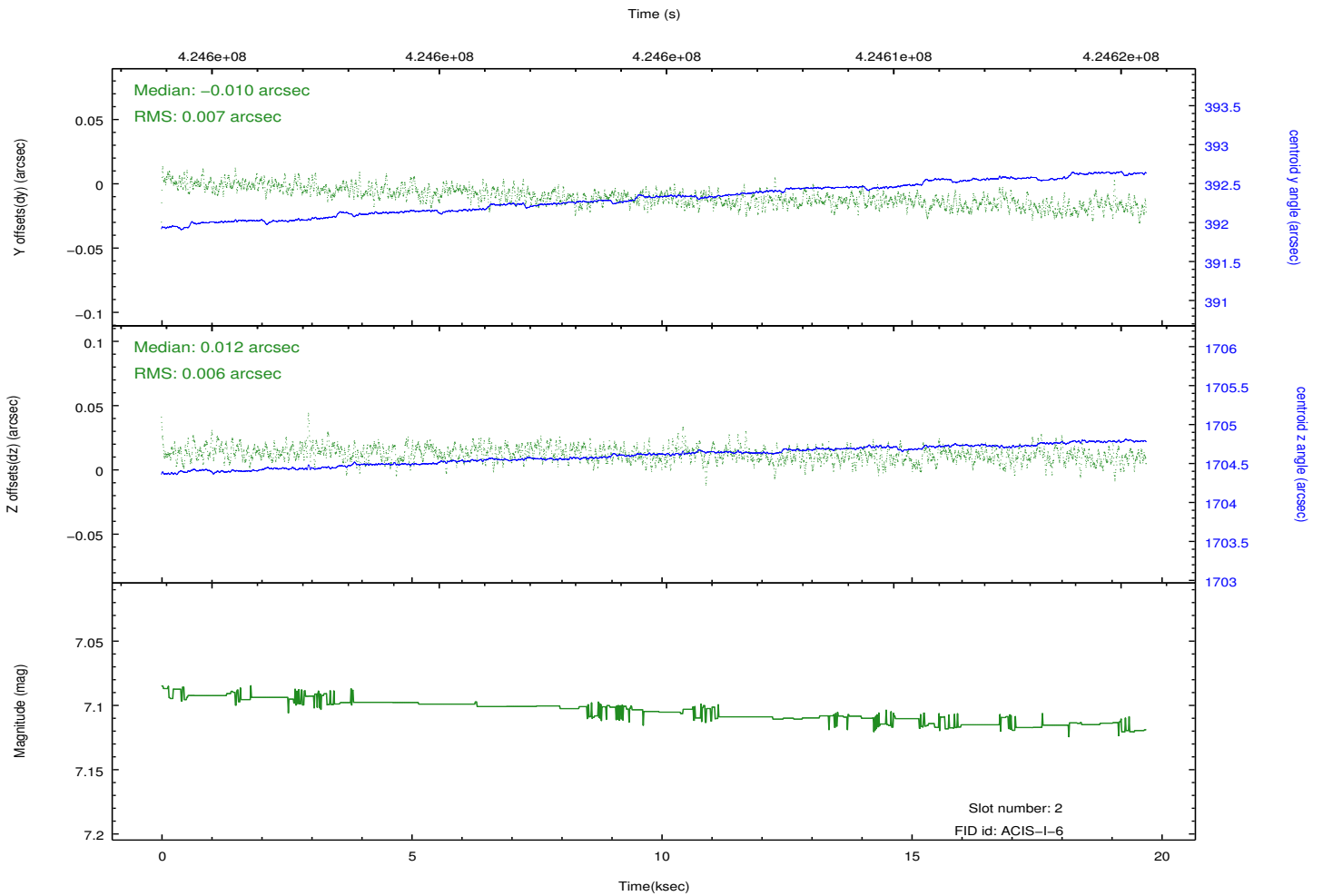
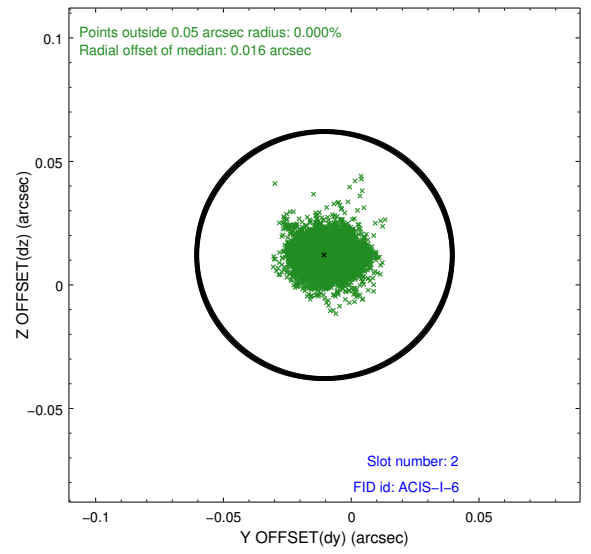
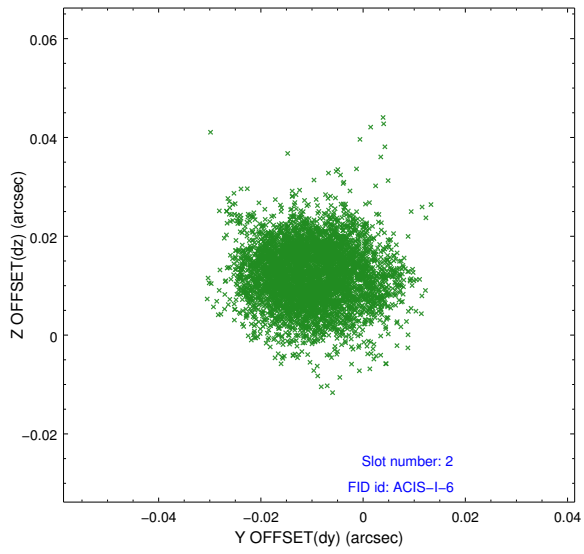
2.5.1 Slot 0



2.5.2 Slot 1



2.5.3 Slot 2



A Summary

A.1 Status

V&V Scientist	Jen Lauer
V&V Date (YYYY-MM-DD)	2012.02.14
V&V Edition	1
V&V Disposition and Status	OK
V&V Charge Time	19.257599928319

A.2 Comments

Joint proposal: NOAO