

V&V Reference Report

L2 ASCDS Version : 8.1.1

Observation 129 - L2 Version 6
Chandra X-Ray Center

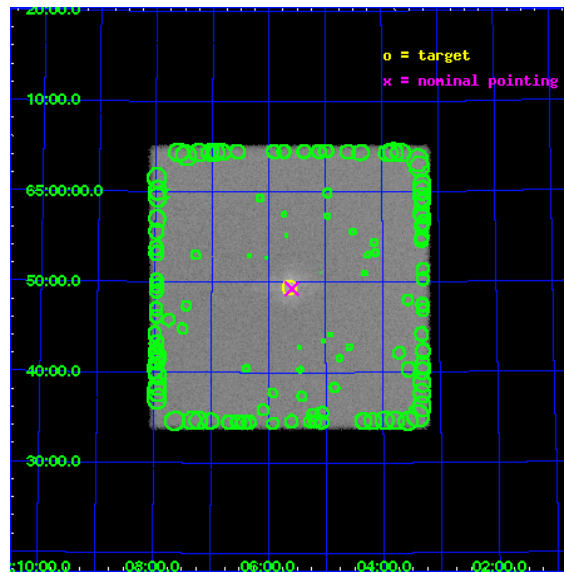
L2 Processing Date : Dec 21 2009

Contents

1	Front	2
2	OBI	3
2.1	OBI	3
2.1.1	Images	3
2.1.2	Parameters	4
2.1.3	Events	4
2.2	Compared Parameters	5
2.3	Aspect	6
2.4	Star Slots	9
2.4.1	Slot 3	9
2.4.2	Slot 4	10
2.4.3	Slot 5	11
2.4.4	Slot 6	12
2.4.5	Slot 7	13
2.5	FID Slots	14
2.5.1	Slot 0	14
2.5.2	Slot 2	15
3	Point Sources	16
A	Summary	17
A.1	Status	17
A.2	Comments	17

1 Front

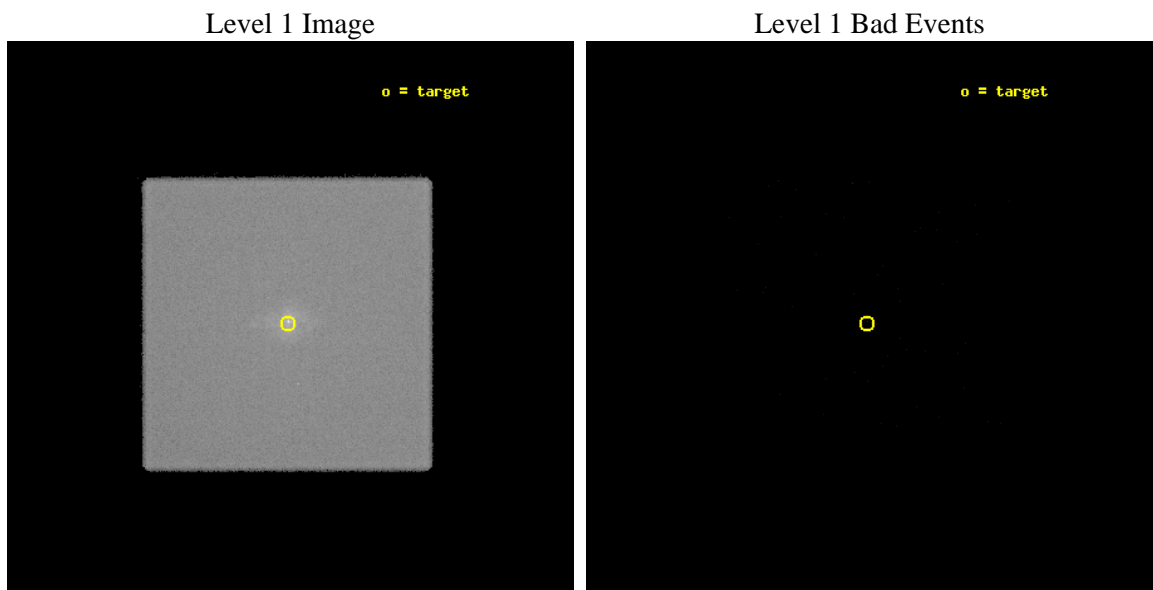
seq_num	500016	Sequence number
obs_id	129	Observation id
title	SEARCH FOR PULSARS	Proposal title
observer	Dr Steve Murray	Principal investigator
object	3C 58	Source name
ra_targ	31.408333	Observer's specified target RA
dec_targ	64.823333	Observer's specified target Dec
ra_nom	31.397958275733	Nominal RA
dec_nom	64.821575450197	Nominal Dec
roll_nom	224.97064734339	Nominal Roll
revision	6	Processing version of data
ontime	29276.307308473	[s]
livetime	29097.716887044	Ontime multiplied by DTCOR
l2events	857990	Number of level 2 events



2 OBI

2.1 OBI

2.1.1 Images



2.1.2 Parameters

obi_num	0	Obi number	sched_exp_time	29000.000000	Scheduled observation exposure time
ascdsver	8.1.2	Processing system revision	ontime	29276.307308473	[s]
caldbver	4.1.4	 	ll events	1324843	Number of level 1 events
date	2009-12-22T00:37:17	Date and time of file creation			
revision	5	Processing version of data			

2.1.3 Events

Level 1 Events

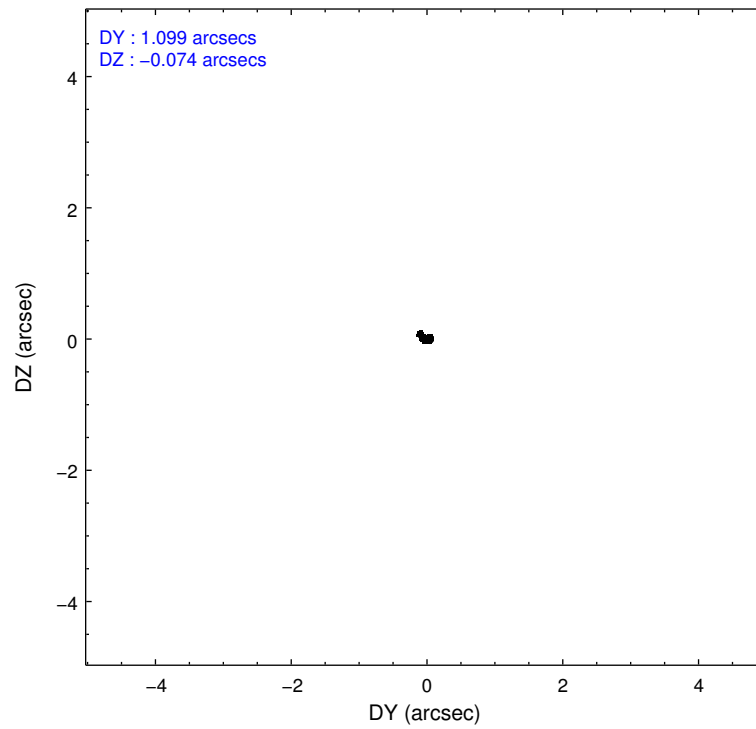
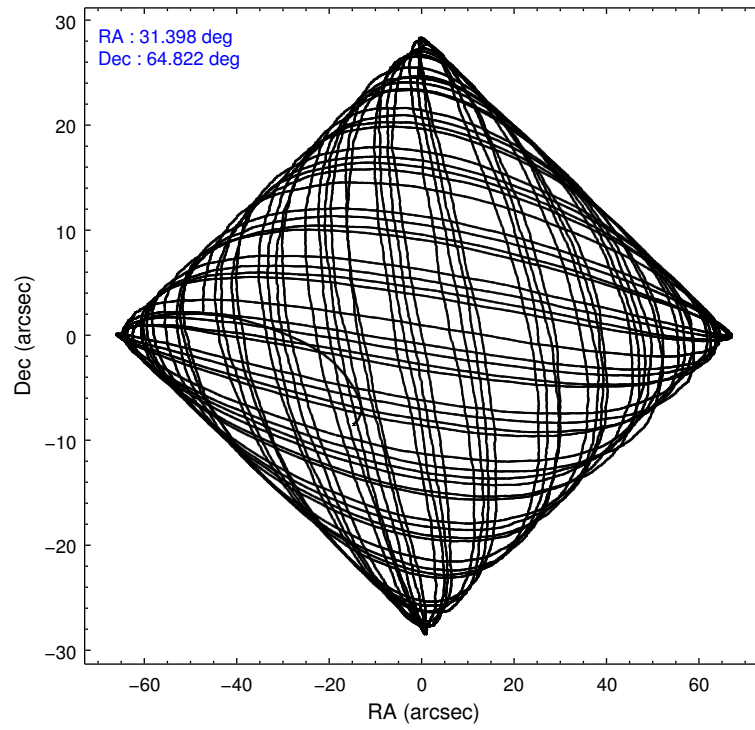
	segment 0
level 1 events	1324843
rejected events	2254
rejected %	0%

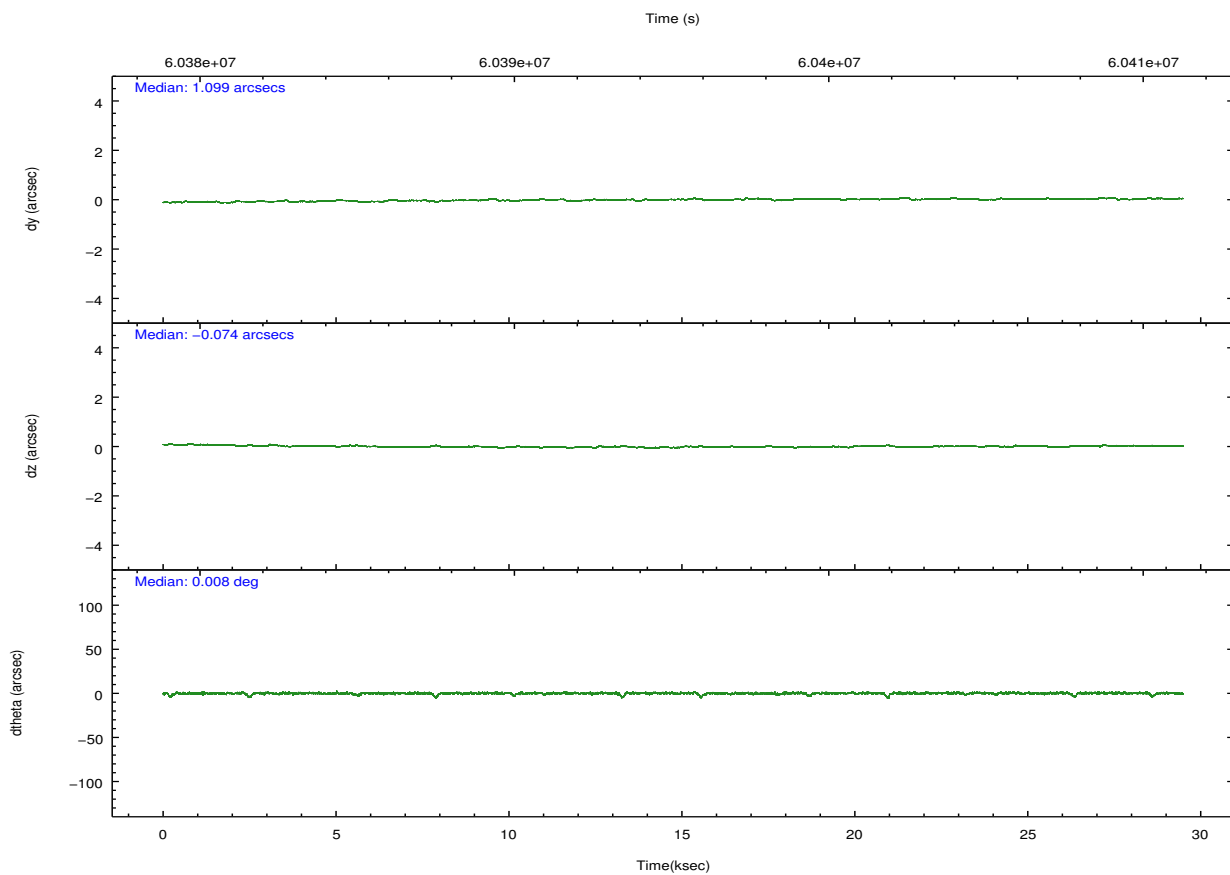
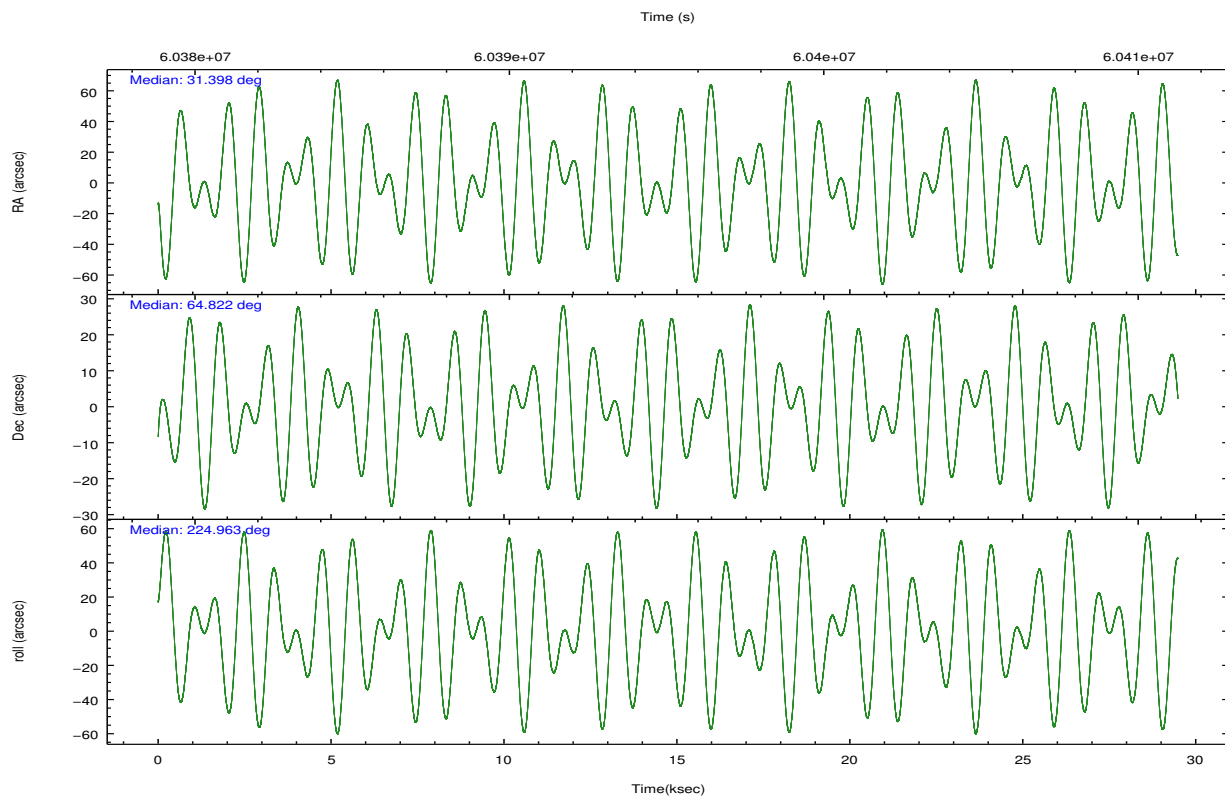
2.2 Compared Parameters

Parameter	Planned	Actual
Instrument	HRC	HRC
Detector	HRC-I	HRC-I
Grating	NONE	NONE
Data mode	OBSERVING	OBSERVING
Observation mode	POINTING	POINTING
Pointing RA	31.414363	31.39795827573289
Pointing Dec	64.848076	64.82157545019744
Pointing Roll	225.051287	224.970647343387
SIM focus pos (mm)	-1.040293	-1.038866356238299
SIM defocus (mm)	0	0.001426264420575141
SIM translation stage pos (mm)	126.985494	126.9829799899862
SIM translation stage offset (mm)	0	0.002508901615314585
Observation start time	60380790.184000	60379691.300404
Observation start date	1999-11-30T20:25:26	1999-11-30T20:08:11
Observation end time	60409790.184000	60410616.064022
Observation end date	1999-12-01T04:28:46	1999-12-01T04:43:36

Parameter	Planned	Actual
Obspar format version number	6	6
Obspar file type	PREDICTED	ACTUAL
Obspar update status	NONE	UPDATED

2.3 Aspect



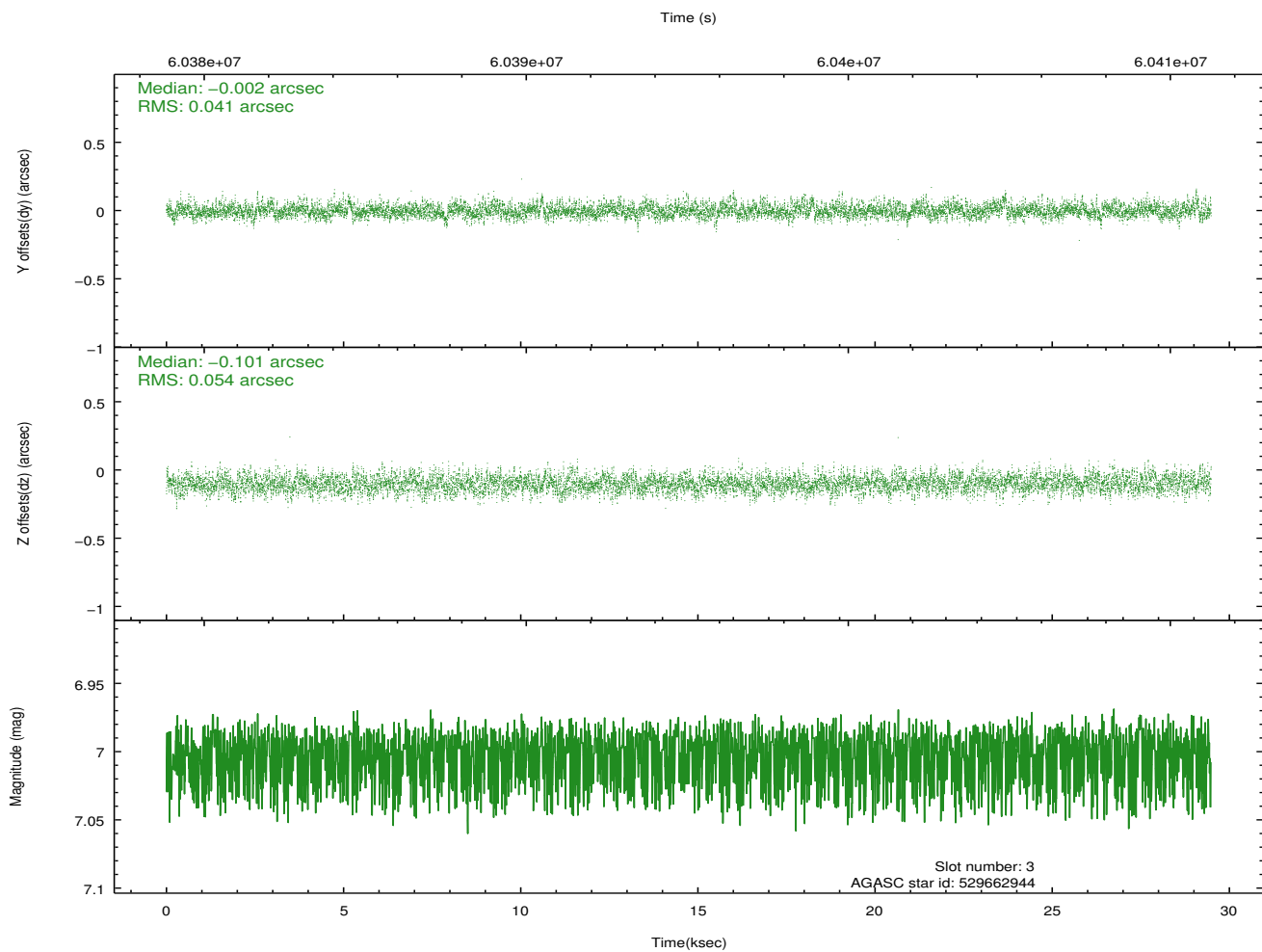
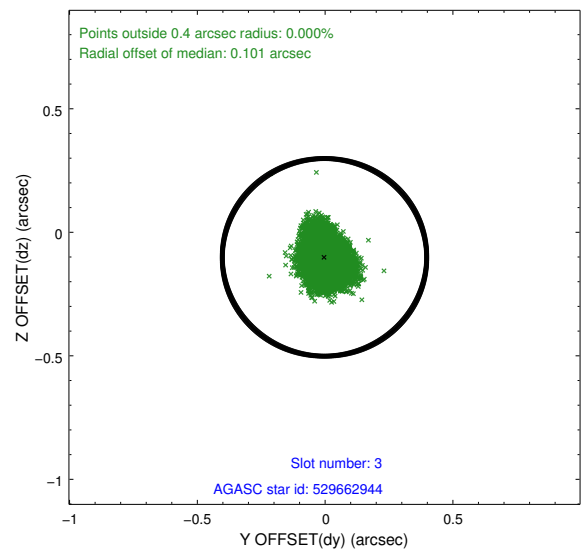
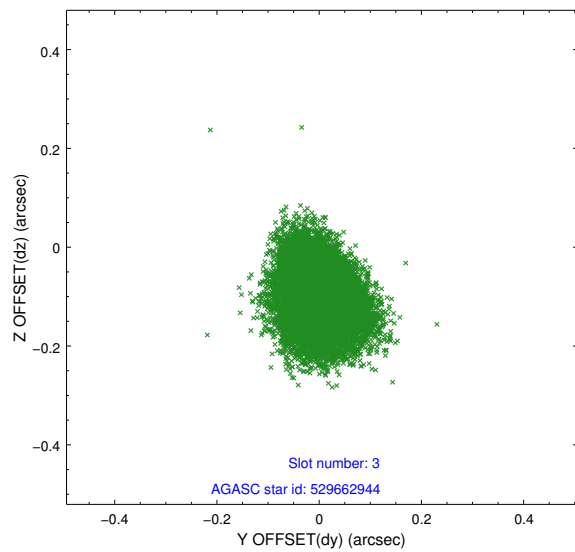


Slot Statistics

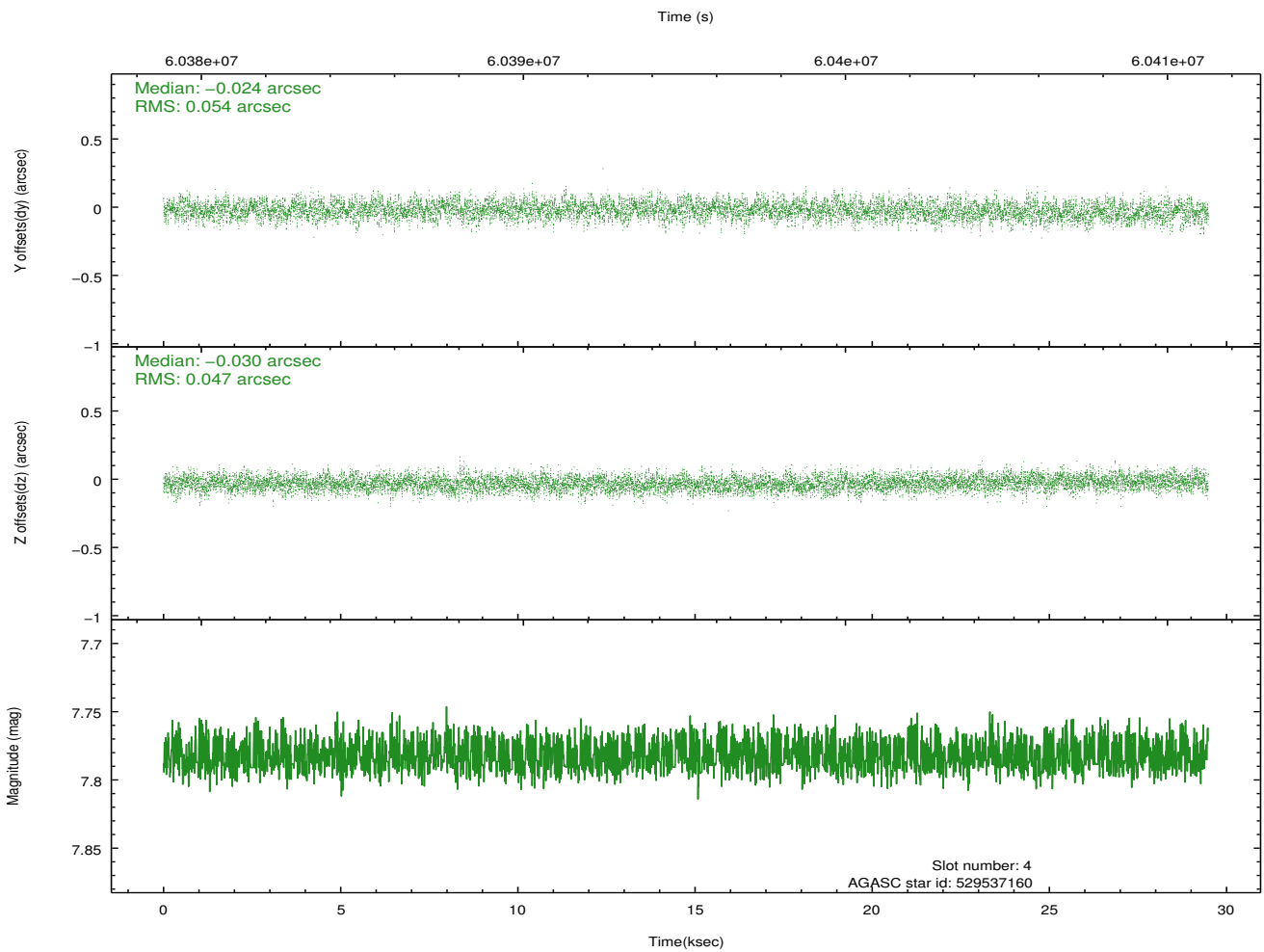
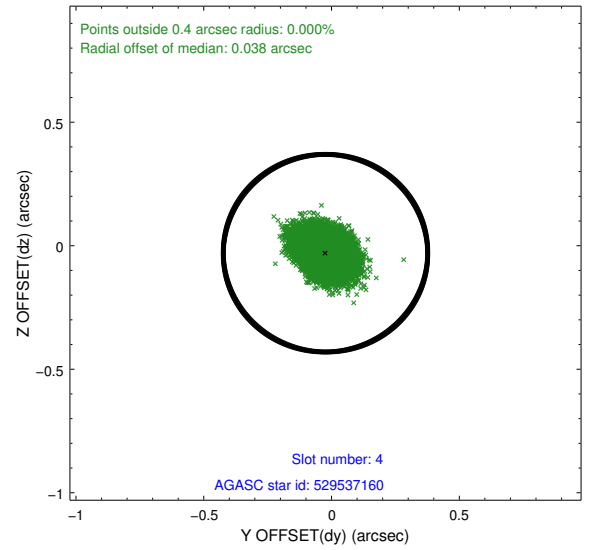
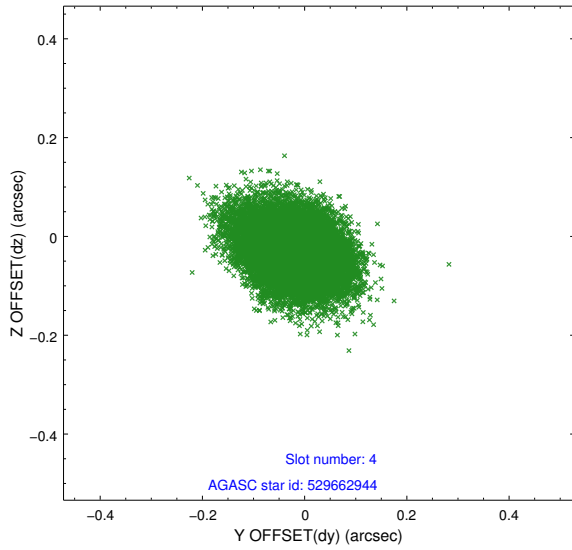
slot	status	id	mag	n_pts	med_dy	med_dz	dr1	dr2	ra	dec	mean_y	mean_z
0	FID	HRC-I-1	6.95	14384	0.030	-0.041	0.008	0.020	0.000000	0.000000	-756.48	-1287.62
1	OMITTED		0.00	0	0.000	0.000	0.000	0.000	0.000000	0.000000	0.00	0.00
2	FID	HRC-I-4	6.97	14384	0.044	-0.022	0.008	0.020	0.000000	0.000000	1286.26	1014.49
3	GUIDE	529662944	7.00	14383	-0.002	-0.101	0.072	0.118	31.166392	65.103499	-384.88	-916.39
4	GUIDE	529537160	7.78	14381	-0.024	-0.030	0.076	0.124	29.402071	64.782597	2313.34	-2052.16
5	GUIDE	529663328	7.81	14382	-0.093	0.056	0.093	0.145	33.449873	64.855010	-2251.93	2149.88
6	GUIDE	529673088	8.83	14378	0.119	0.021	0.077	0.125	30.560791	64.638256	1458.98	-403.91
7	GUIDE	529665672	9.40	14376	-0.002	0.055	0.104	0.166	32.707839	64.829181	-1364.54	1435.10

2.4 Star Slots

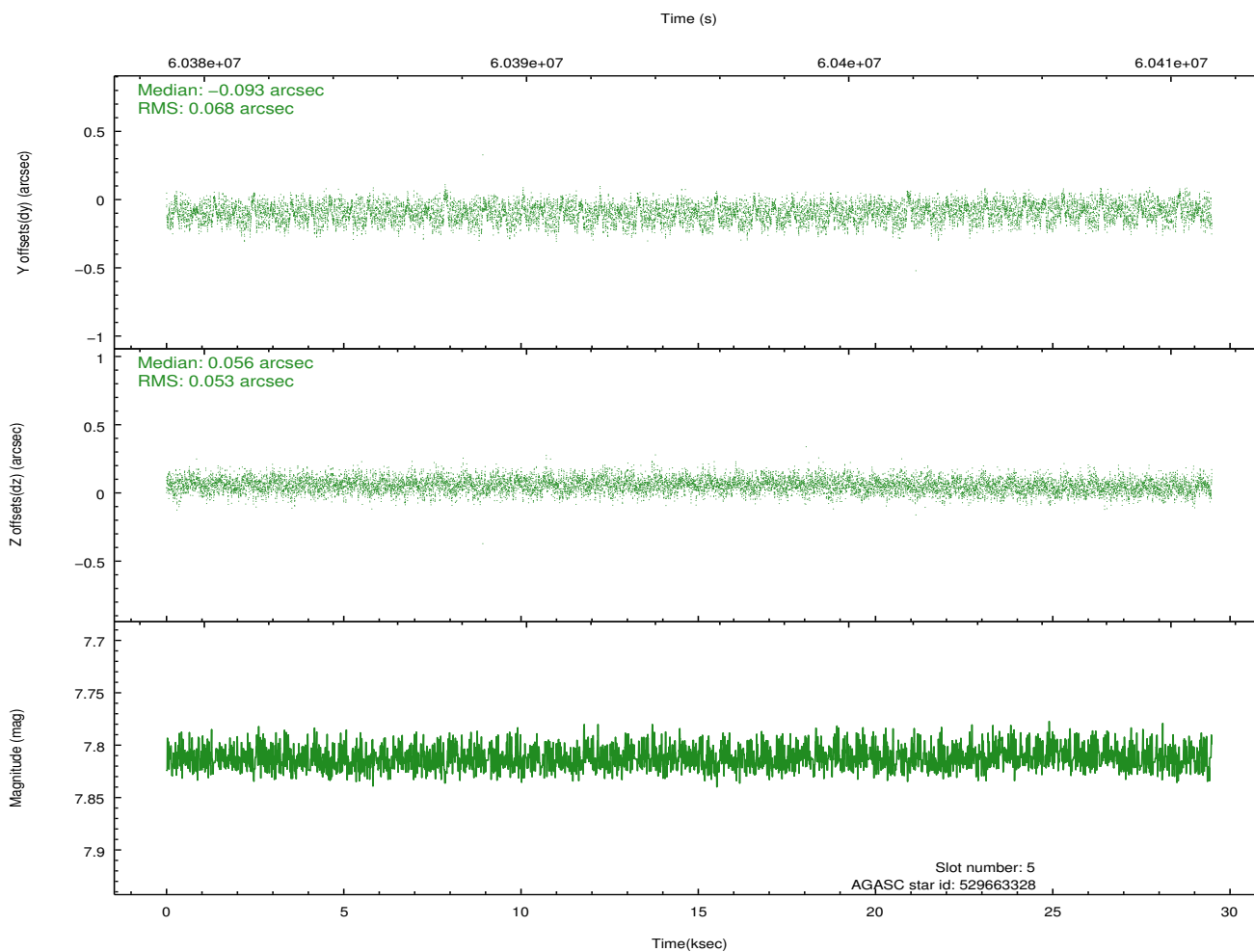
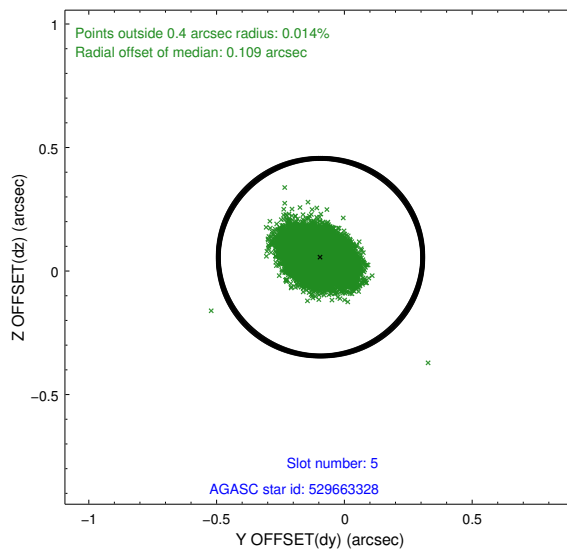
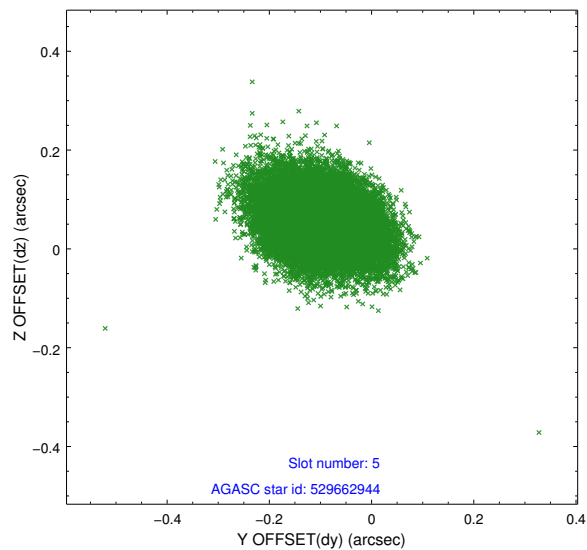
2.4.1 Slot 3



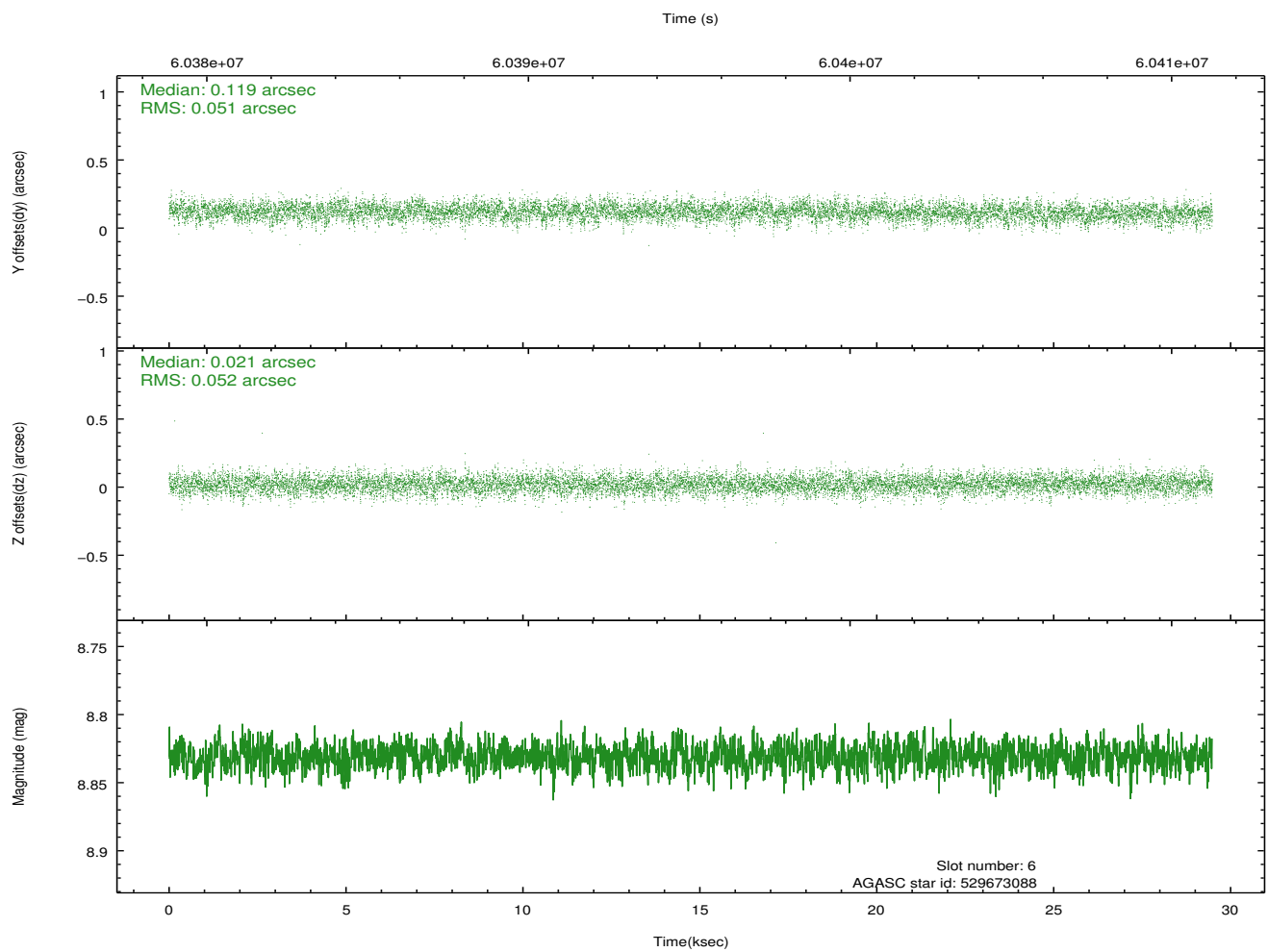
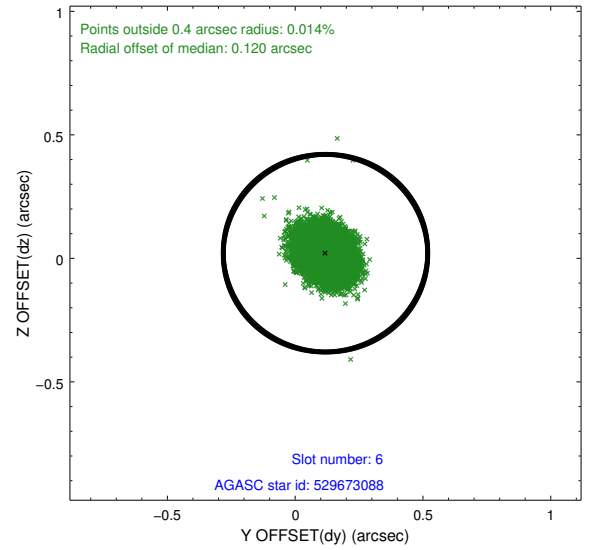
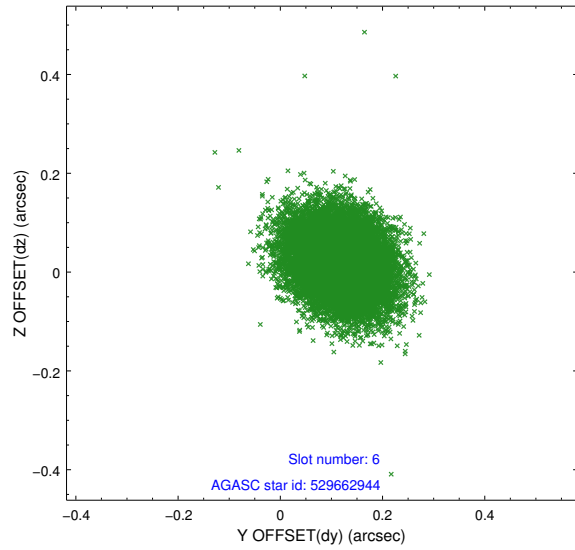
2.4.2 Slot 4



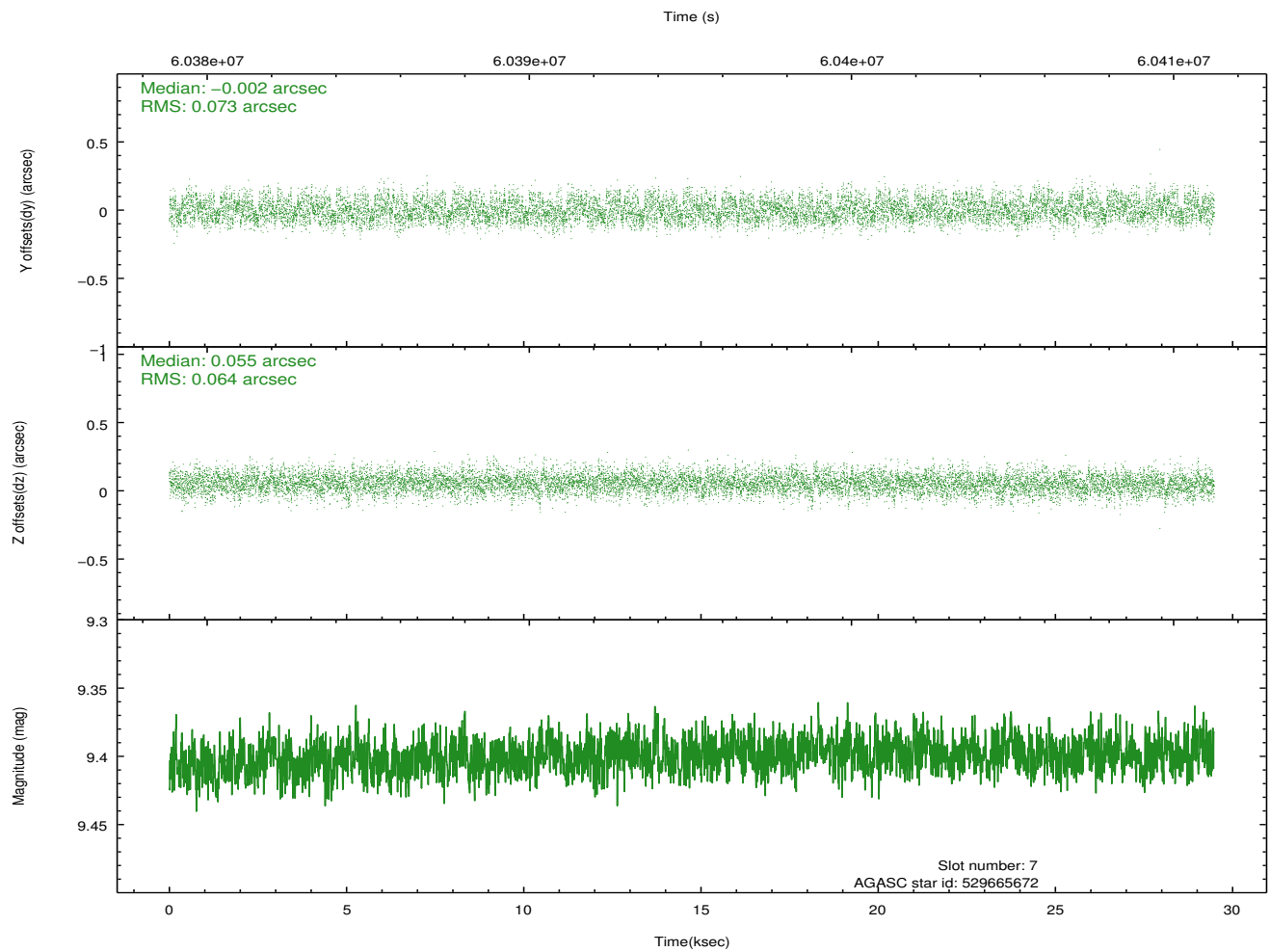
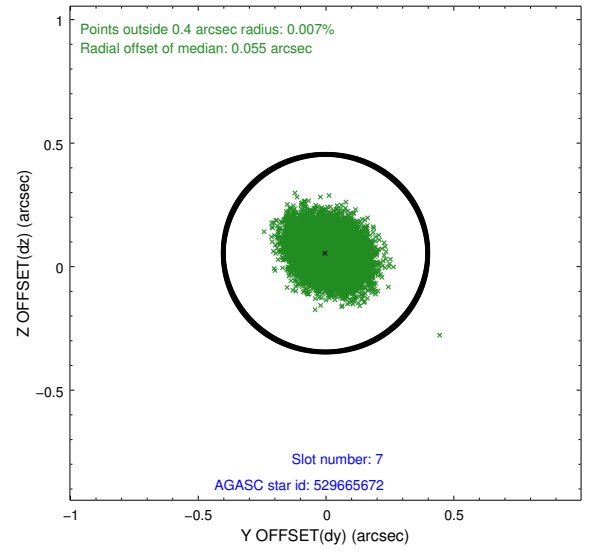
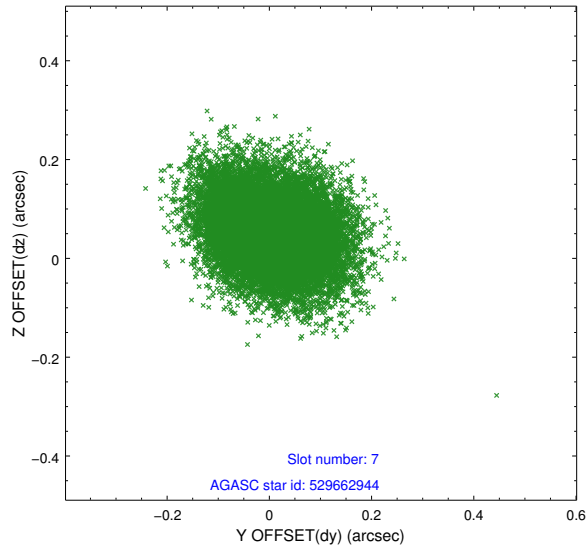
2.4.3 Slot 5



2.4.4 Slot 6

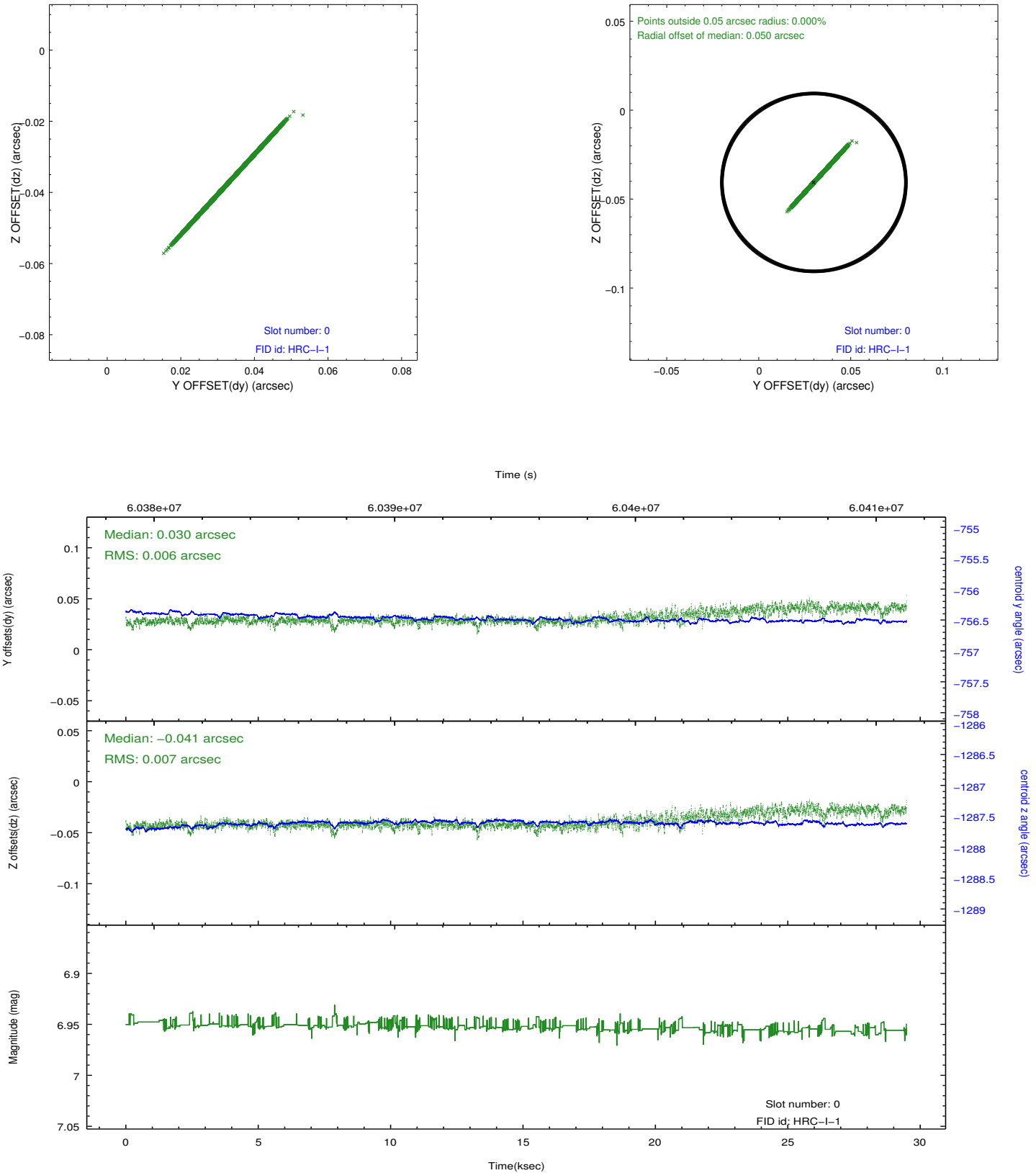


2.4.5 Slot 7

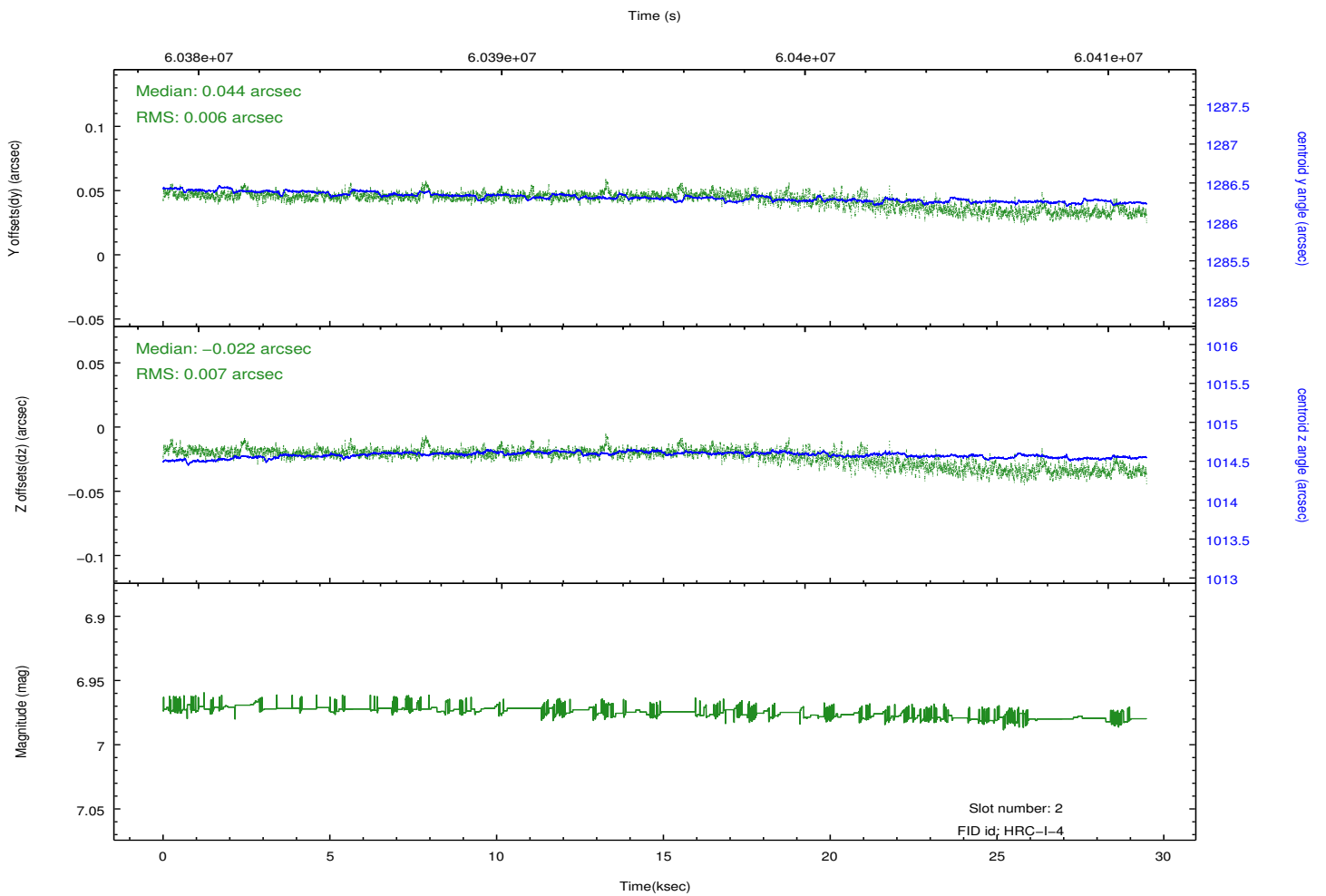
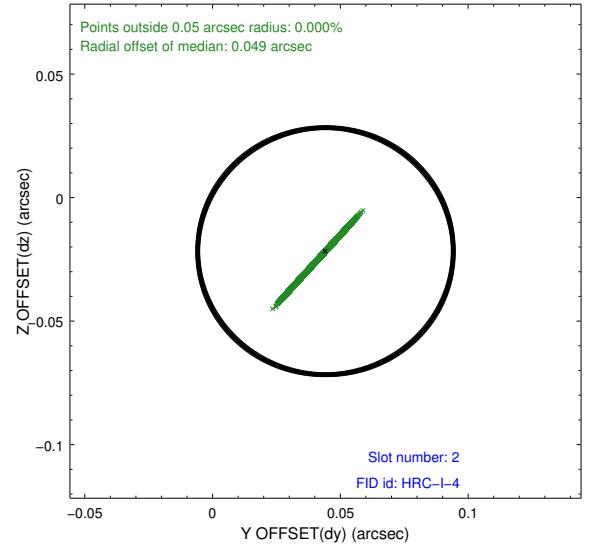
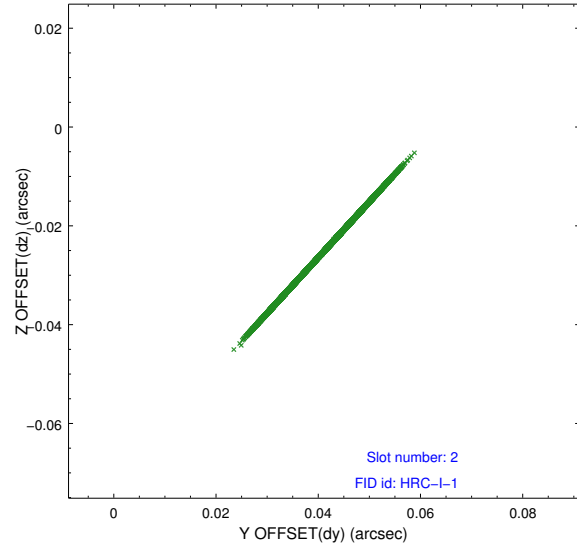


2.5 FID Slots

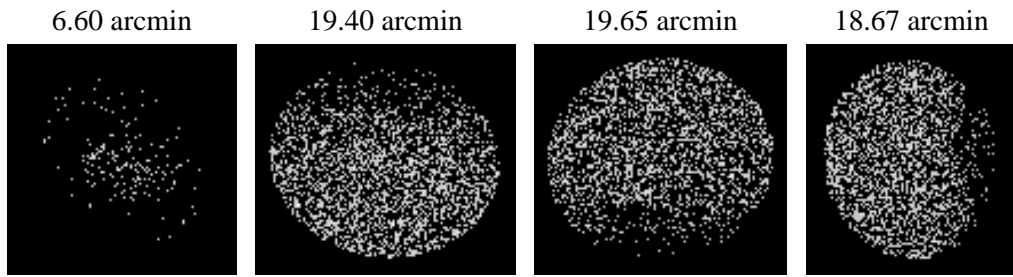
2.5.1 Slot 0



2.5.2 Slot 2



3 Point Sources



A Summary

A.1 Status

V&V Scientist	Beth Sundheim
V&V Date (YYYY-MM-DD)	2010.01.03
V&V Edition	1
V&V Disposition and Status	OK
V&V Charge Time	29.276

A.2 Comments

The fid light in slot 1 was removed from the aspect solution due to poor data quality. The aspect solution is not expected to be degraded by removing one fid light or guide star from the solution.