

V&V Reference Report

L2 ASCDS Version : 8.4.3

Observation 12929 - L2 Version 2
Chandra X-Ray Center

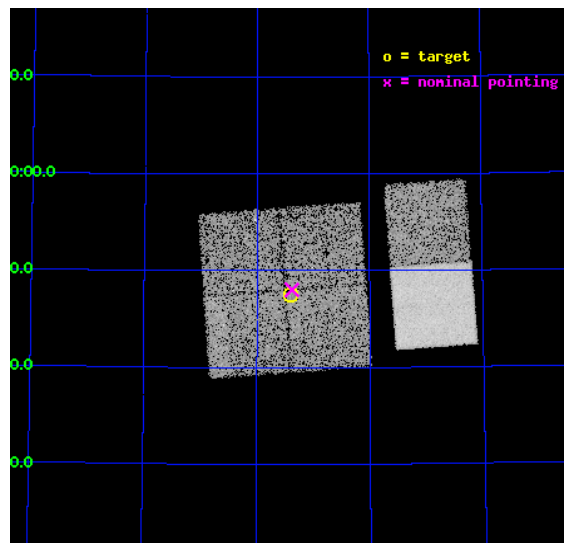
L2 Processing Date : Feb 6 2012

Contents

1	Front	2
2	OBI	3
2.1	OBI	3
2.1.1	Images	3
2.1.2	Bias	3
2.1.3	Parameters	4
2.1.4	Events	4
2.2	Compared Parameters	5
2.3	Aspect	6
2.4	Star Slots	9
2.4.1	Slot 3	9
2.4.2	Slot 4	10
2.4.3	Slot 5	11
2.4.4	Slot 6	12
2.4.5	Slot 7	13
2.5	FID Slots	14
2.5.1	Slot 0	14
2.5.2	Slot 1	15
2.5.3	Slot 2	16
A	Summary	17
A.1	Status	17
A.2	Comments	17

1 Front

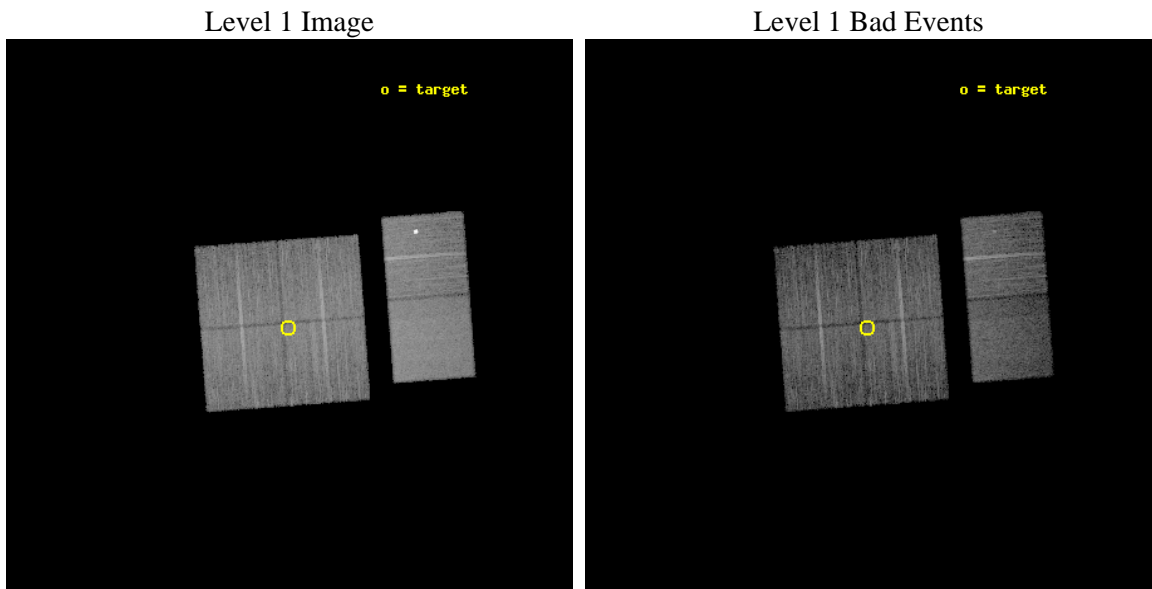
seq_num	900961	Sequence number
obs_id	12929	Observation id
title	Filling the 15 micron Gap: Search for Compton-thick Accretion with Chandra and AKARI in the NEP Deep Field	Proposal title
observer	Dr. Mirko Krumpe	Principal investigator
object	AKARI-NEP-Deep Field	Source name
dtcycle	0	
cycle	P	events from which exps? Prim/Second/Both
ra_targ	268.85	Observer's specified target RA [deg]
dec_targ	66.7925	Observer's specified target Dec [deg]
ra_nom	268.8454319758	Nominal RA [deg]
dec_nom	66.800428690084	Nominal Dec [deg]
roll_nom	85.712907141855	Nominal Roll [deg]
revision	2	Processing version of data
ontime	12054.399955153	Sum of GTIs [s]
livetime	11901.759884633	Livetime [s]
ontime0	12051.158974826	Sum of GTIs [s]
ontime1	12054.399955153	Sum of GTIs [s]
ontime2	12051.158954918	Sum of GTIs [s]
ontime3	12054.399955153	Sum of GTIs [s]
ontime6	12051.158974826	Sum of GTIs [s]
ontime7	12054.399955153	Sum of GTIs [s]
l2events	81199	Number of level 2 events



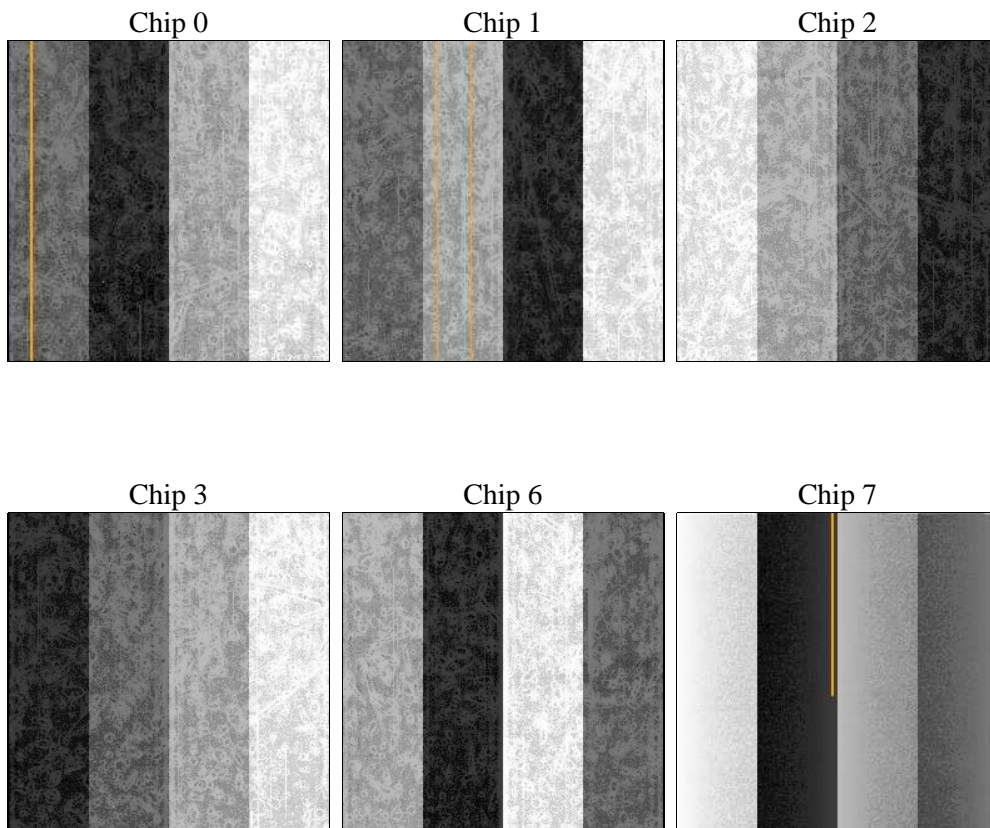
2 OBI

2.1 OBI

2.1.1 Images



2.1.2 Bias



2.1.3 Parameters

obi_num	0	Obi number	sched_exp_time	12000.000000	[s] Scheduled observation exposure time
ascdsver	8.4.3	Processing system revision	ontime	12054.399955153	Sum of GTIs [s]
caldbver	4.4.7	 	ontime0	12051.158974826	Sum of GTIs [s]
date	2012-02-06T07:01:49	Date and time of file creation	ontime1	12054.399955153	Sum of GTIs [s]
revision	2	Processing version of data	ontime2	12051.158954918	Sum of GTIs [s]
			ontime3	12054.399955153	Sum of GTIs [s]
			ontime6	12051.158974826	Sum of GTIs [s]
			ontime7	12054.399955153	Sum of GTIs [s]
			l1events	499797	Number of level 1 events

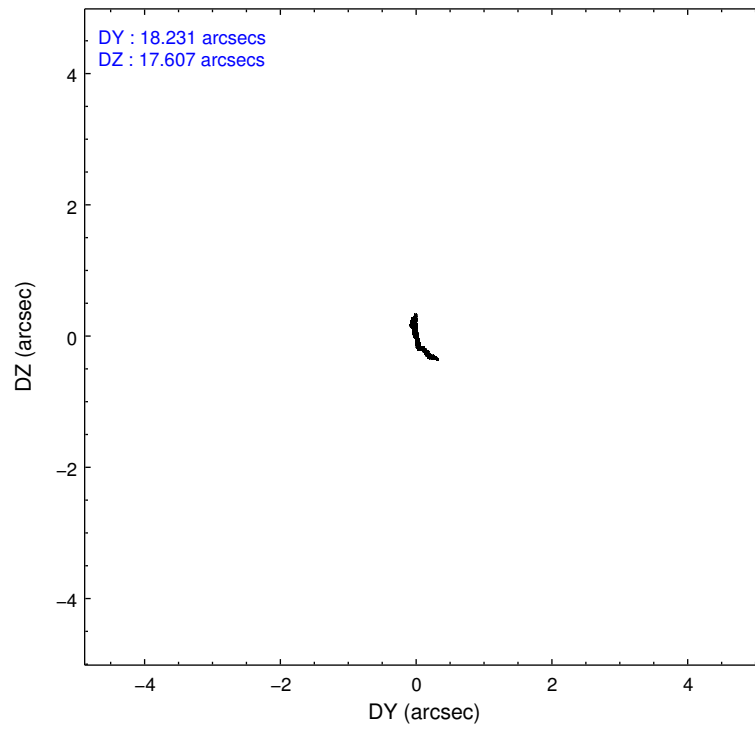
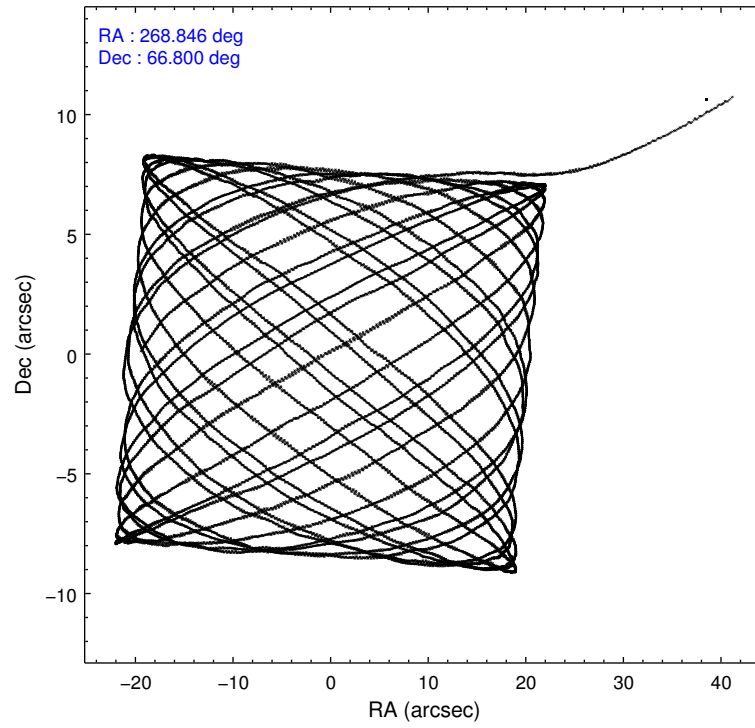
2.1.4 Events

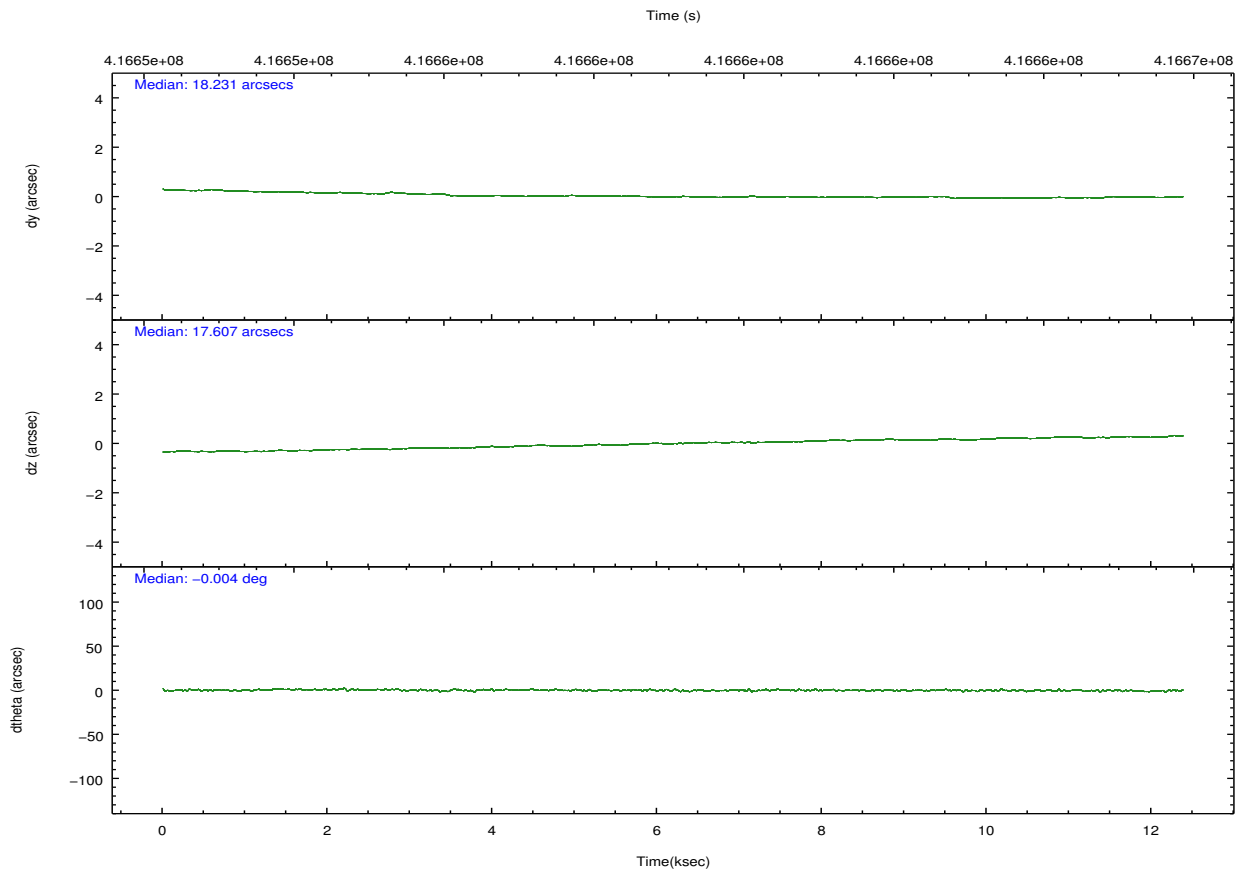
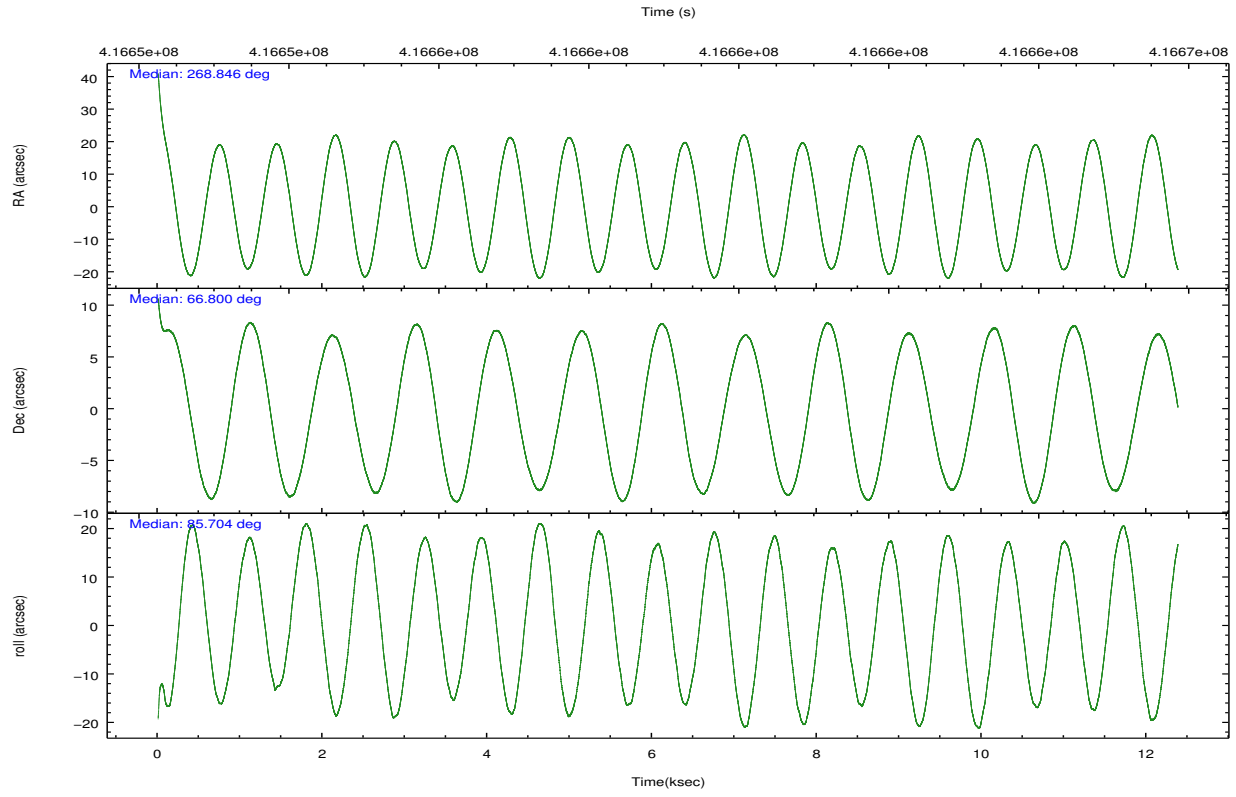
	ccd 0	ccd 1	ccd 2	ccd 3	ccd 6	ccd 7		ccd 0	ccd 1	ccd 2	ccd 3	ccd 6	ccd 7
level 1 events	71043	76120	79782	79114	93330	100408	grade 0 events	3064	3519	3010	2925	13604	3980
rejected events	62301	66102	71200	70818	73590	55663		4%	4%	3%	3%	14%	3%
rejected %	87%	86%	89%	89%	78%	55%	grade 1 events	41	52	57	49	130	140
								0%	0%	0%	0%	0%	0%
							grade 2 events	2140	2444	2126	1904	2086	9199
								3%	3%	2%	2%	2%	9%
							grade 3 events	980	1049	895	886	943	3980
								1%	1%	1%	1%	1%	3%
							grade 4 events	846	1023	911	858	1037	3873
								1%	1%	1%	1%	1%	3%
							grade 5 events	3388	3625	3309	3857	3942	10401
								4%	4%	4%	4%	4%	10%
							grade 6 events	1716	1984	1642	1725	2078	23734
								2%	2%	2%	2%	2%	23%
							grade 7 events	58868	62424	67832	66910	69510	45101
								82%	82%	85%	84%	74%	44%

2.2 Compared Parameters

Parameter	Planned	Actual	Parameter	Planned	Actual
Instrument	ACIS	ACIS	Obspar format version number	7	7
Detector	ACIS-012367	ACIS-012367	Obspar file type	PREDICTED	ACTUAL
Grating	NONE	NONE	Obspar update status	NONE	UPDATED
Data mode	VFAINT	VFAINT	CCD I0 on	Y	Y
Observation mode	POINTING	POINTING	CCD I1 on	Y	Y
[deg] Pointing RA	268.875901	268.8454319757983	CCD I2 on	Y	Y
[deg] Pointing Dec	66.775647	66.80042869008436	CCD I3 on	Y	Y
[deg] Pointing Roll	85.476198	85.71290714185456	CCD S0 on	N	N
[mm] SIM focus pos	-0.782348	-0.7809083437167272	CCD S1 on	N	N
[mm] SIM defocus	0	0.001439871863259334	CCD S2 on	O2	Y
[mm] SIM translation stage pos	-233.592463	-233.5874344608287	CCD S3 on	O1	Y
[mm] SIM translation stage offset	0	-0.005018542100998502	CCD S4 on	N	N
[s] Observation start time (MET)	416653254.184000	416652089.4675	CCD S5 on	N	N
Observation start date	2011-03-16T08:59:48	2011-03-16T08:41:29	Number of optional ACIS chips dropped	0	0
[s] Observation end time (MET)	416665254.184000	416665388.33069	On-chip summing requested	N	N
Observation end date	2011-03-16T12:19:48	2011-03-16T12:23:08	Subarray requested	NONE	NONE
Read mode	TIMED	TIMED	Alternating exposures requested	N	N
			[s] Primary exposure time	0.000000	3.2

2.3 Aspect



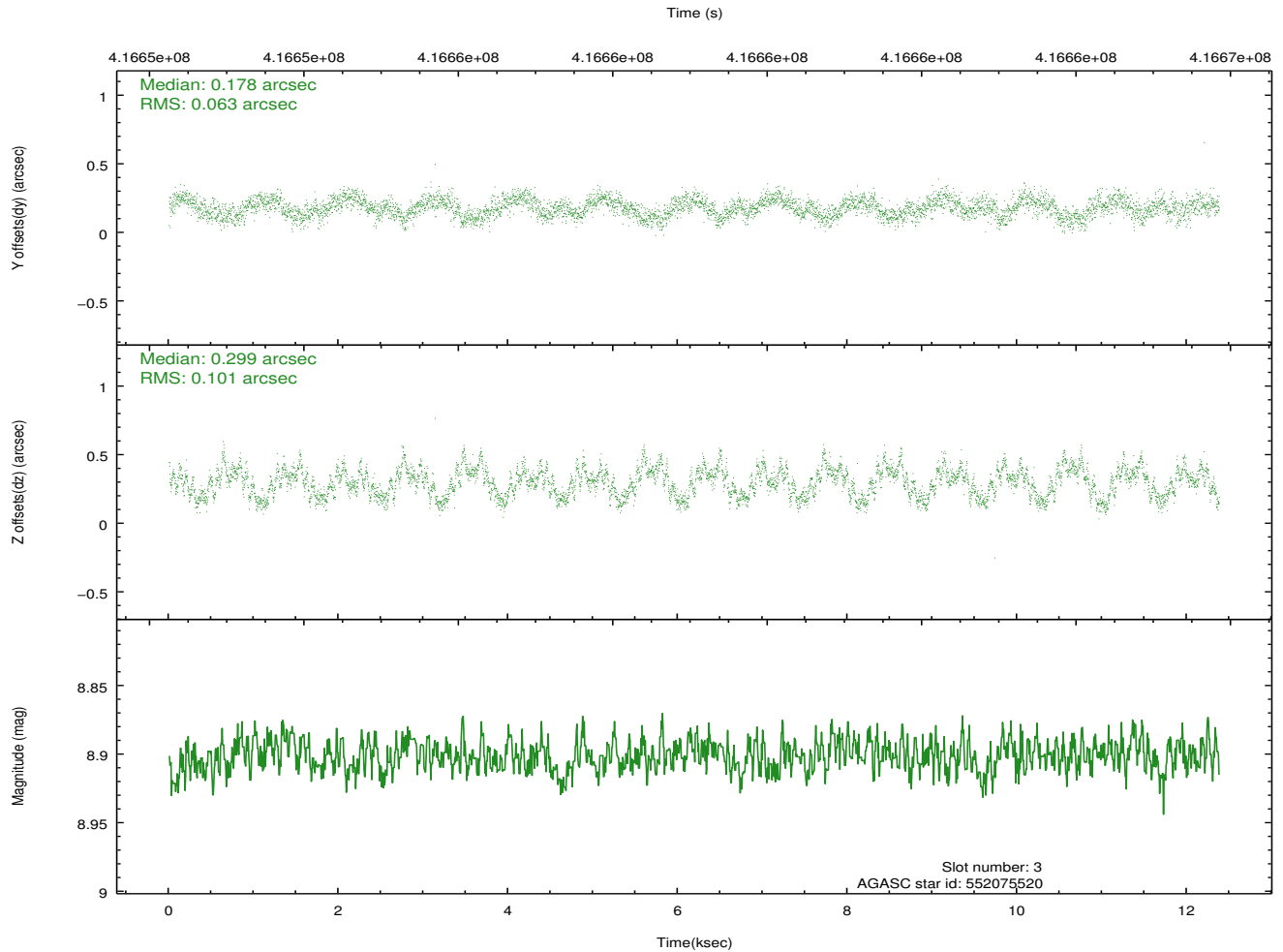
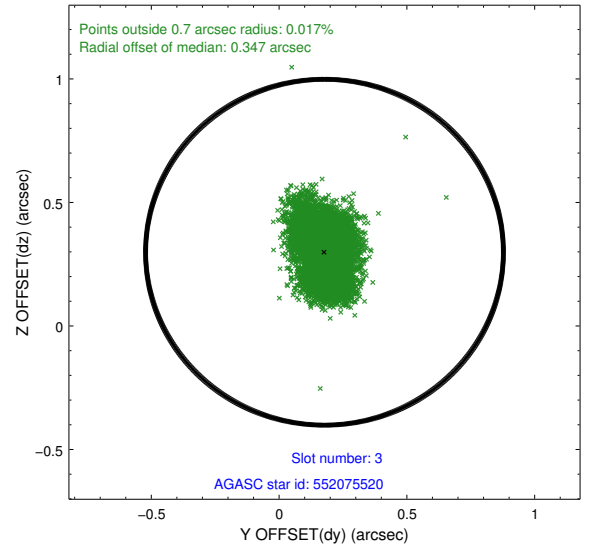
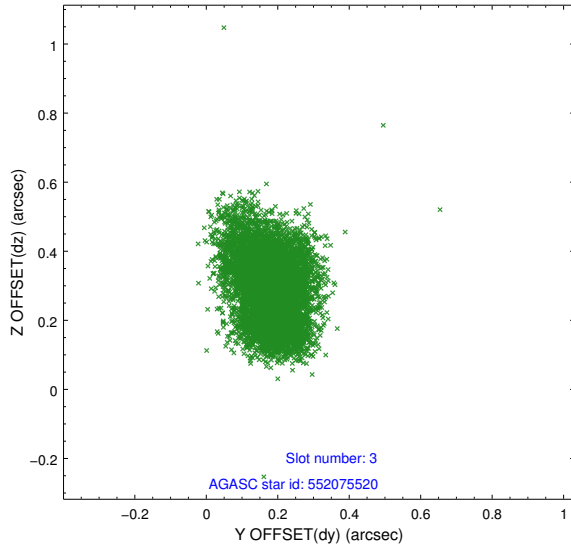


Slot Statistics

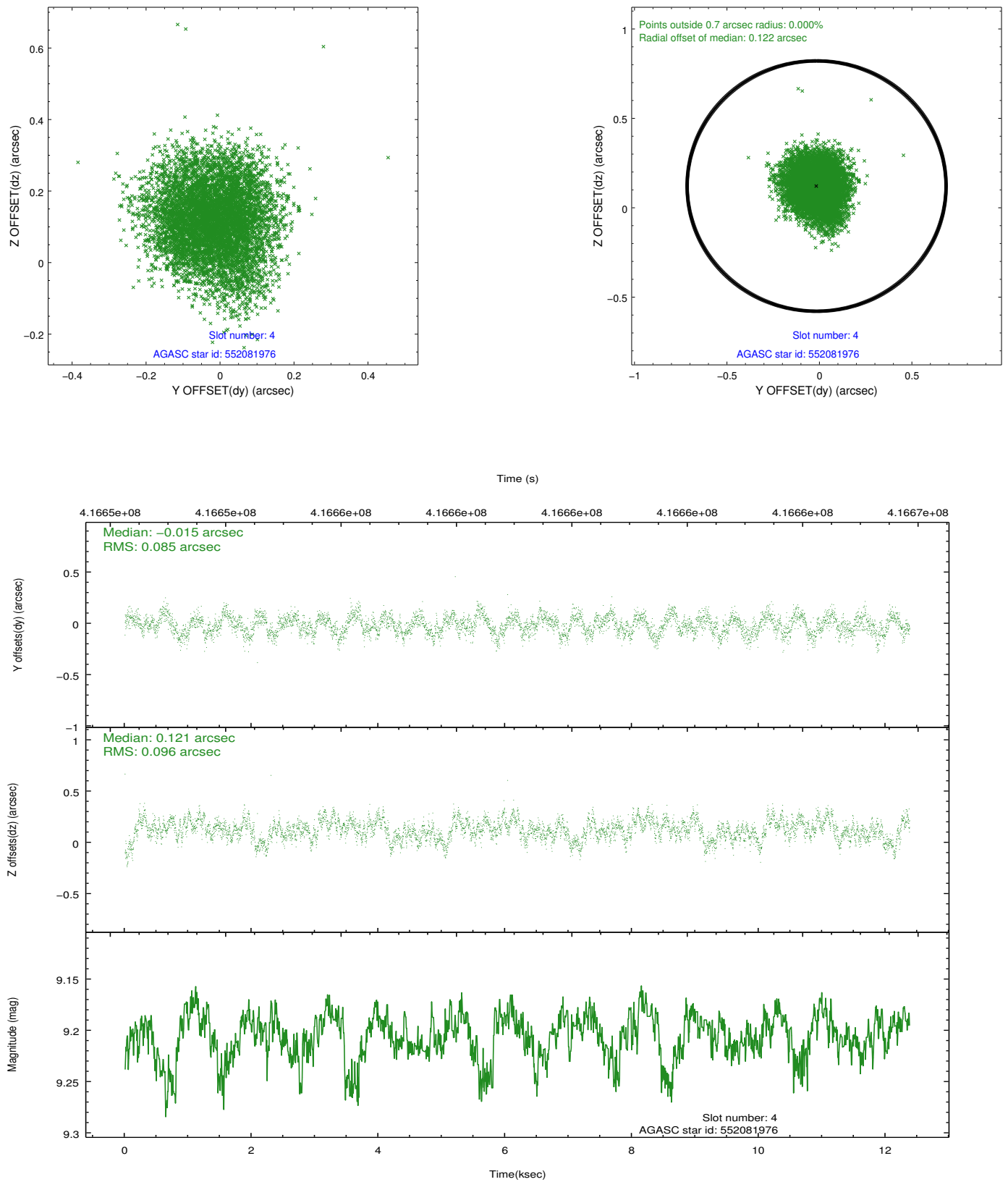
slot	status	id	mag	n_pts	med_dy	med_dz	dr1	dr2	ra	dec	mean_y	mean_z
0	FID	ACIS-I-2	6.95	3018	-0.088	-0.102	0.012	0.024	0.000000	0.000000	-773.13	-847.75
1	FID	ACIS-I-4	6.97	3019	0.251	0.081	0.007	0.013	0.000000	0.000000	2141.01	1058.52
2	FID	ACIS-I-5	7.02	3019	-0.264	0.090	0.010	0.019	0.000000	0.000000	-1826.69	1056.67
3	GUIDE	552075520	8.90	6037	0.178	0.299	0.130	0.198	269.430358	66.310622	-1601.88	-931.03
4	GUIDE	552081976	9.20	6034	-0.015	0.121	0.139	0.217	269.000724	66.928627	562.81	-131.80
5	GUIDE	552082392	9.69	6000	-0.304	-0.223	0.136	0.216	267.761612	66.950878	518.55	1616.53
6	GUIDE	552084280	7.64	6039	0.147	-0.088	0.089	0.141	268.233478	66.419076	-1347.77	821.67
7	GUIDE	552216648	9.76	6033	-0.005	-0.100	0.171	0.278	270.130141	67.075369	1231.69	-1666.06

2.4 Star Slots

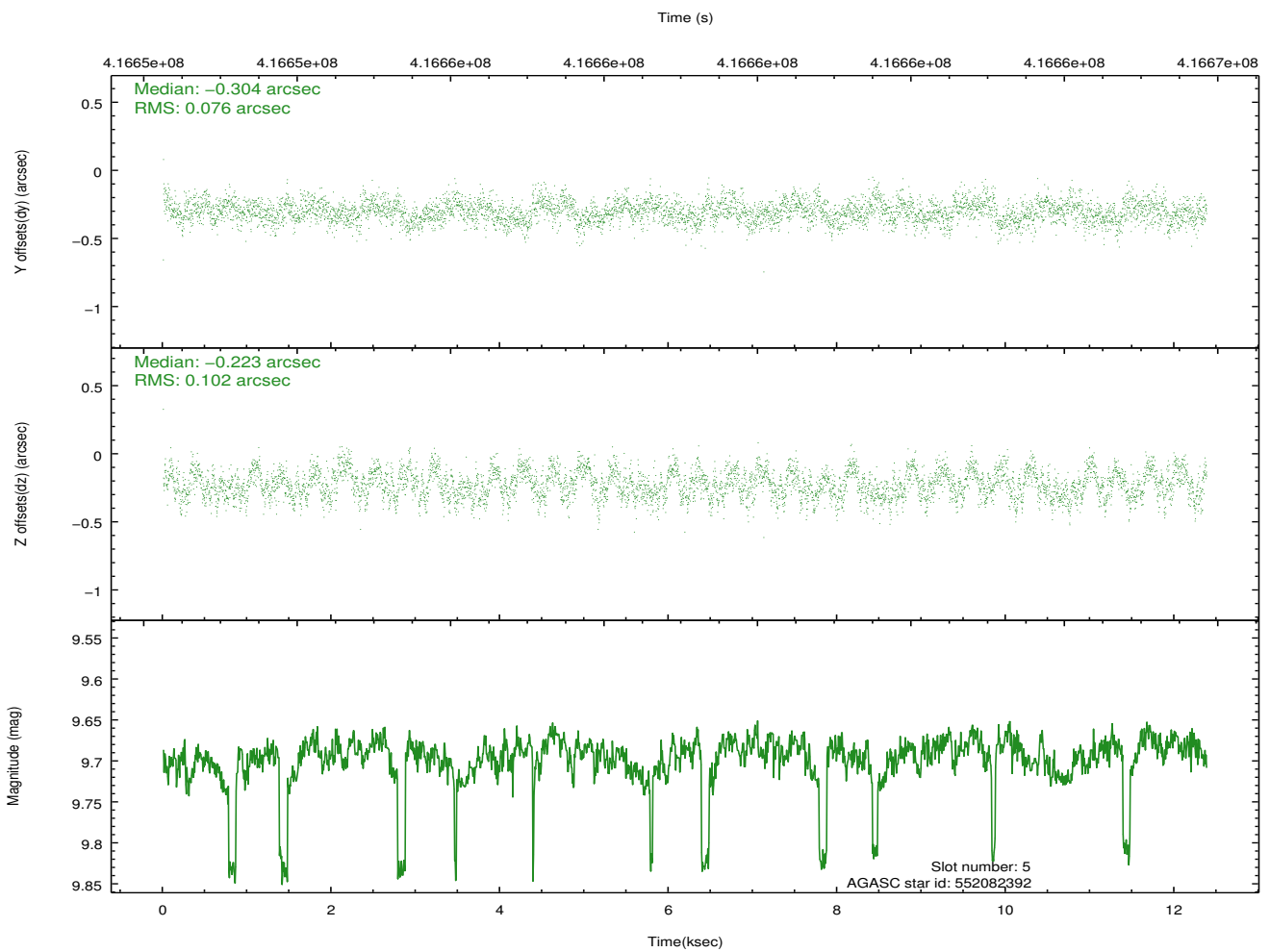
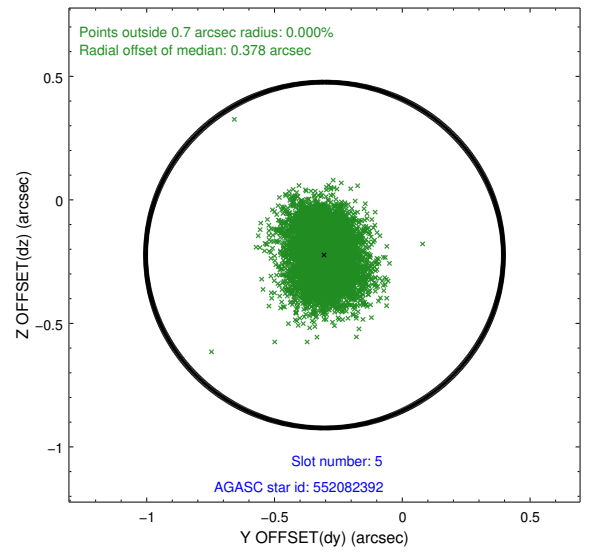
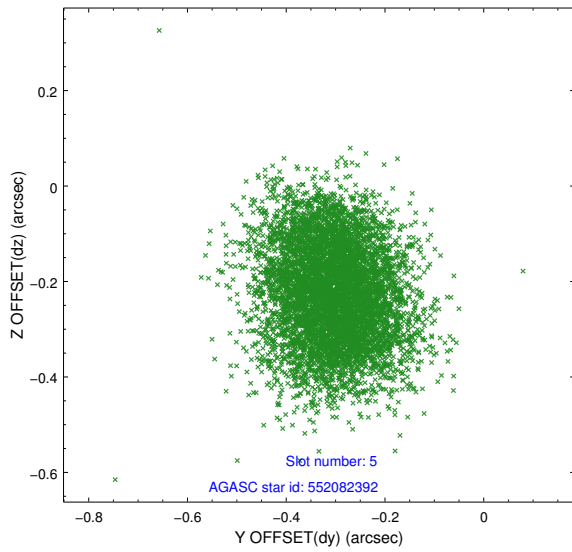
2.4.1 Slot 3



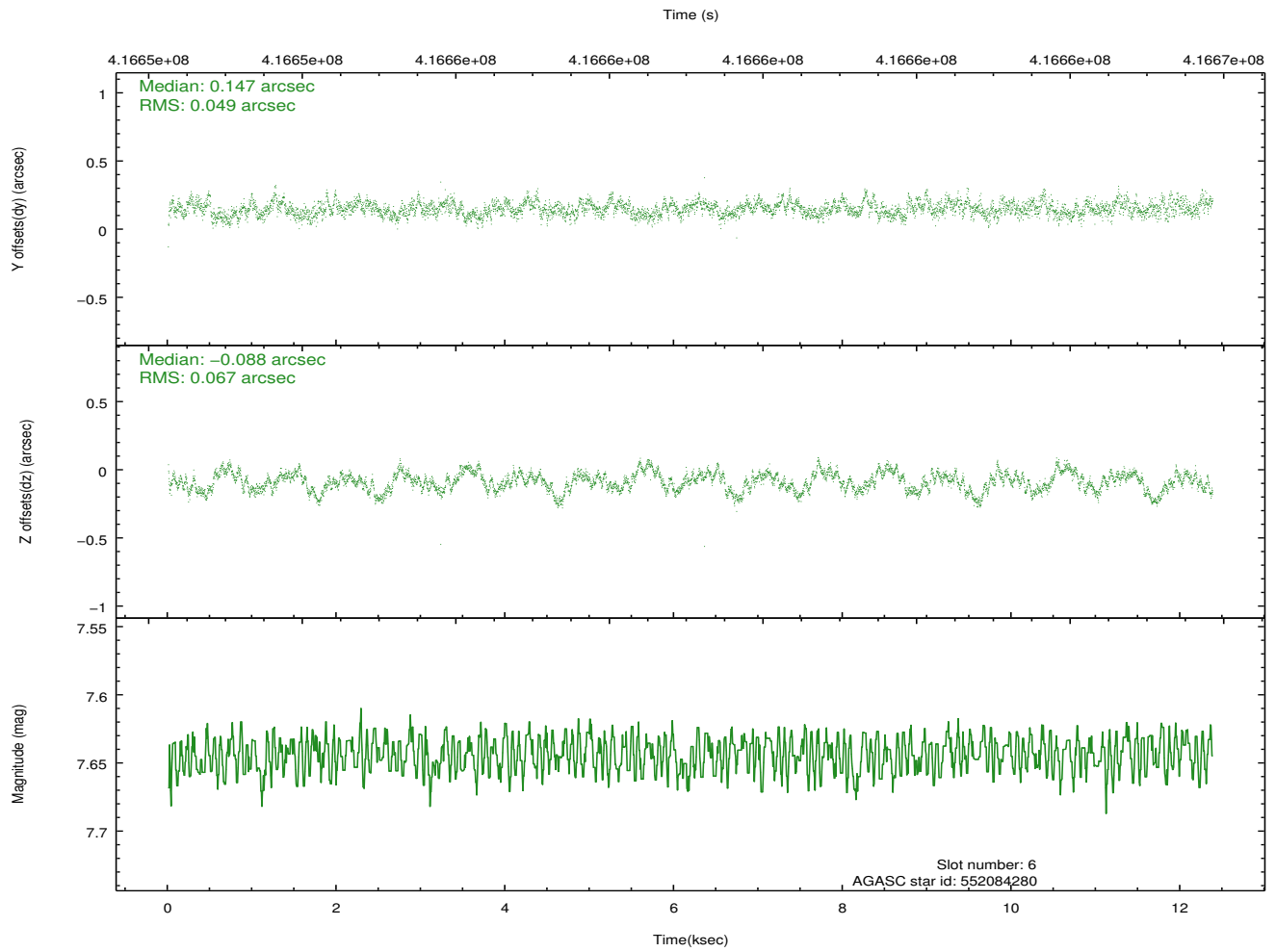
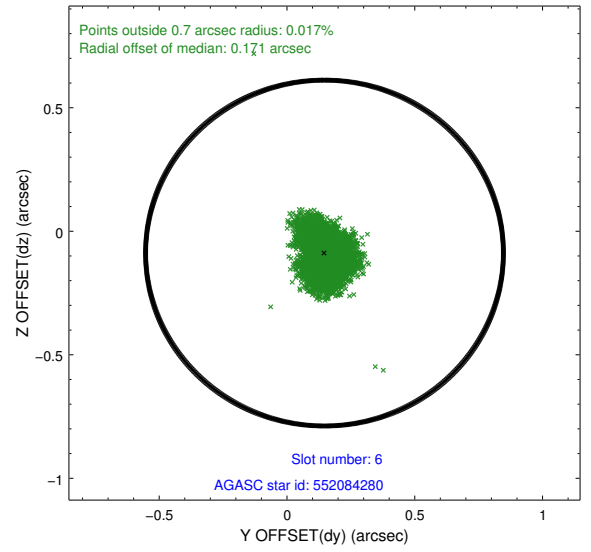
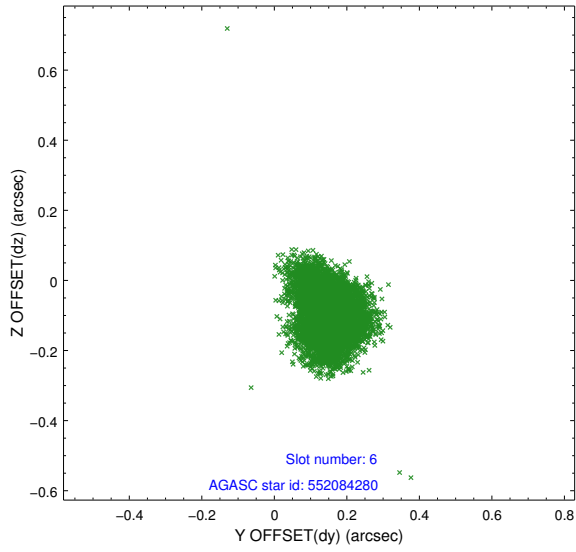
2.4.2 Slot 4



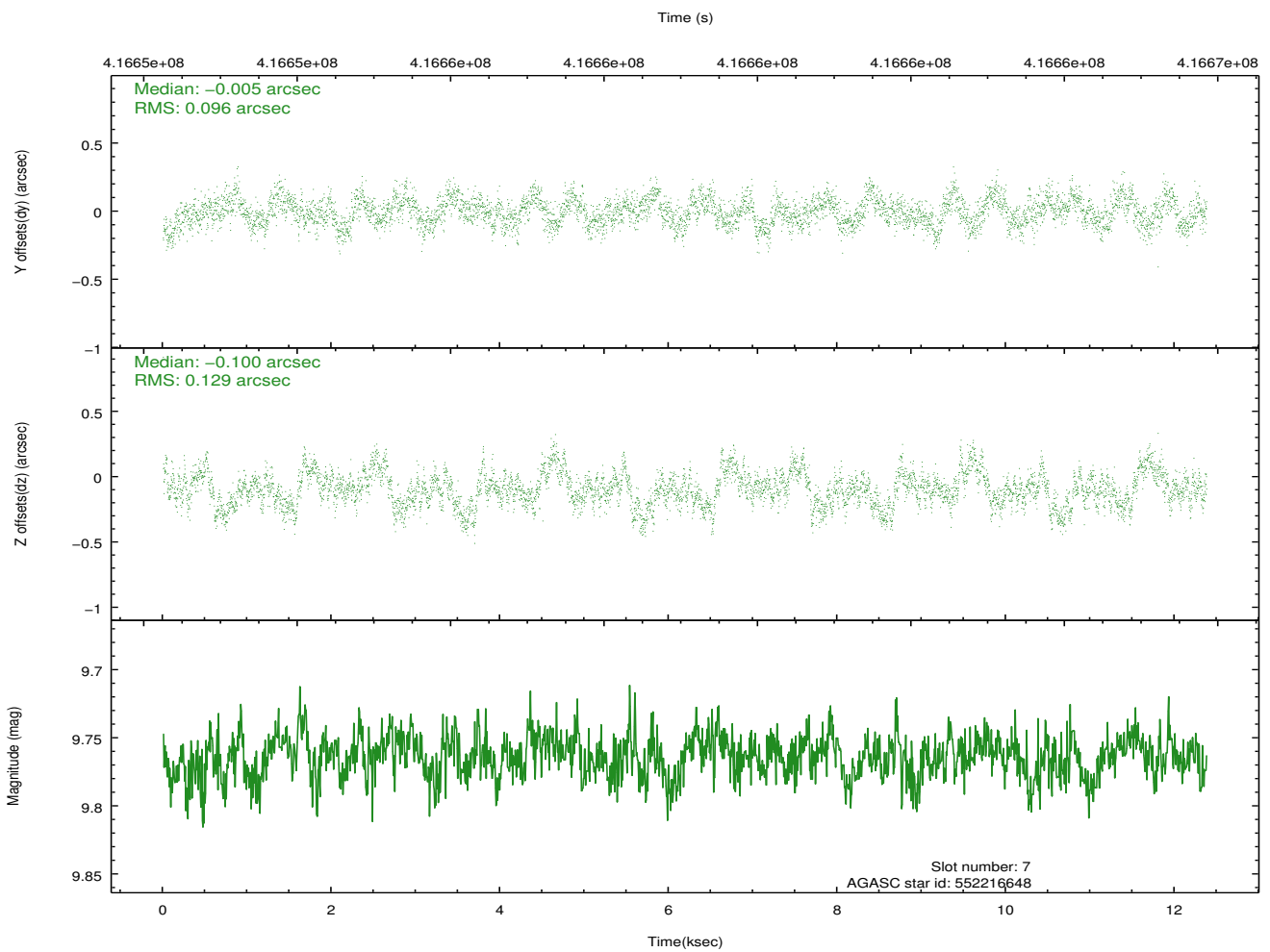
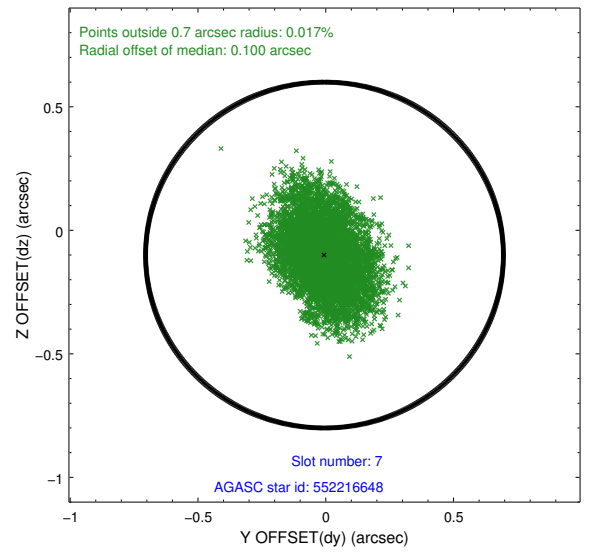
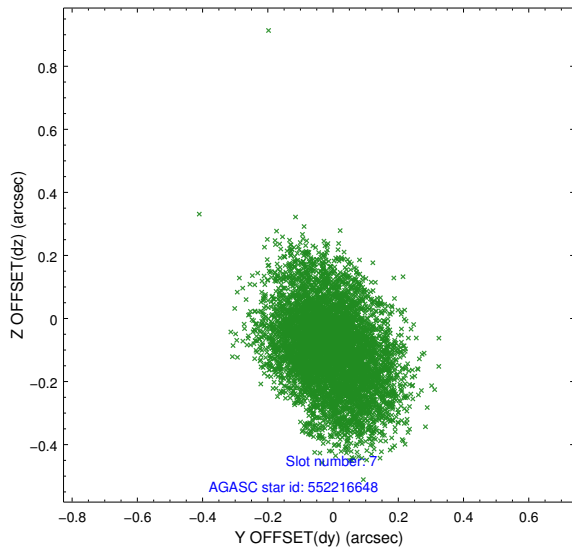
2.4.3 Slot 5



2.4.4 Slot 6

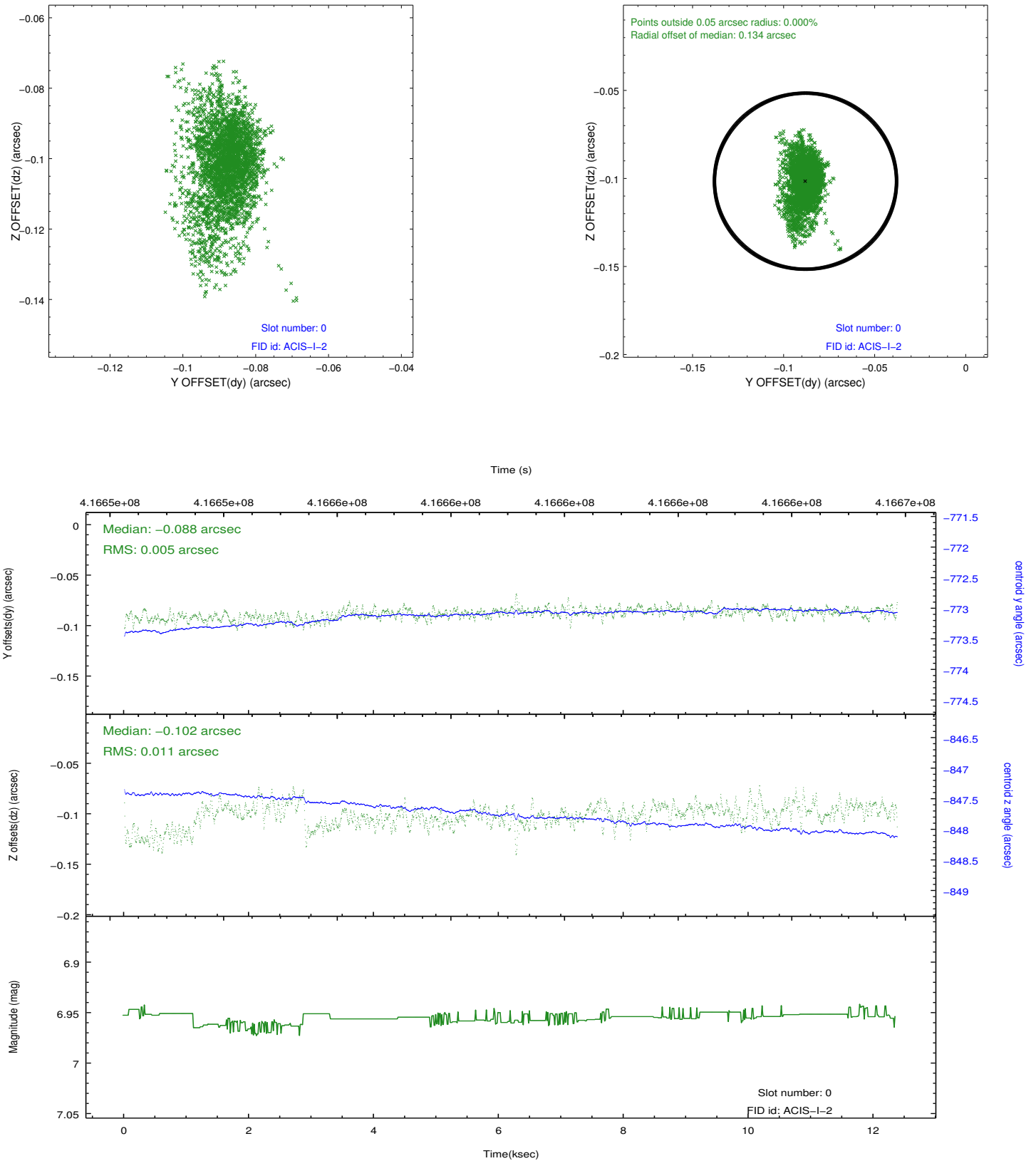


2.4.5 Slot 7

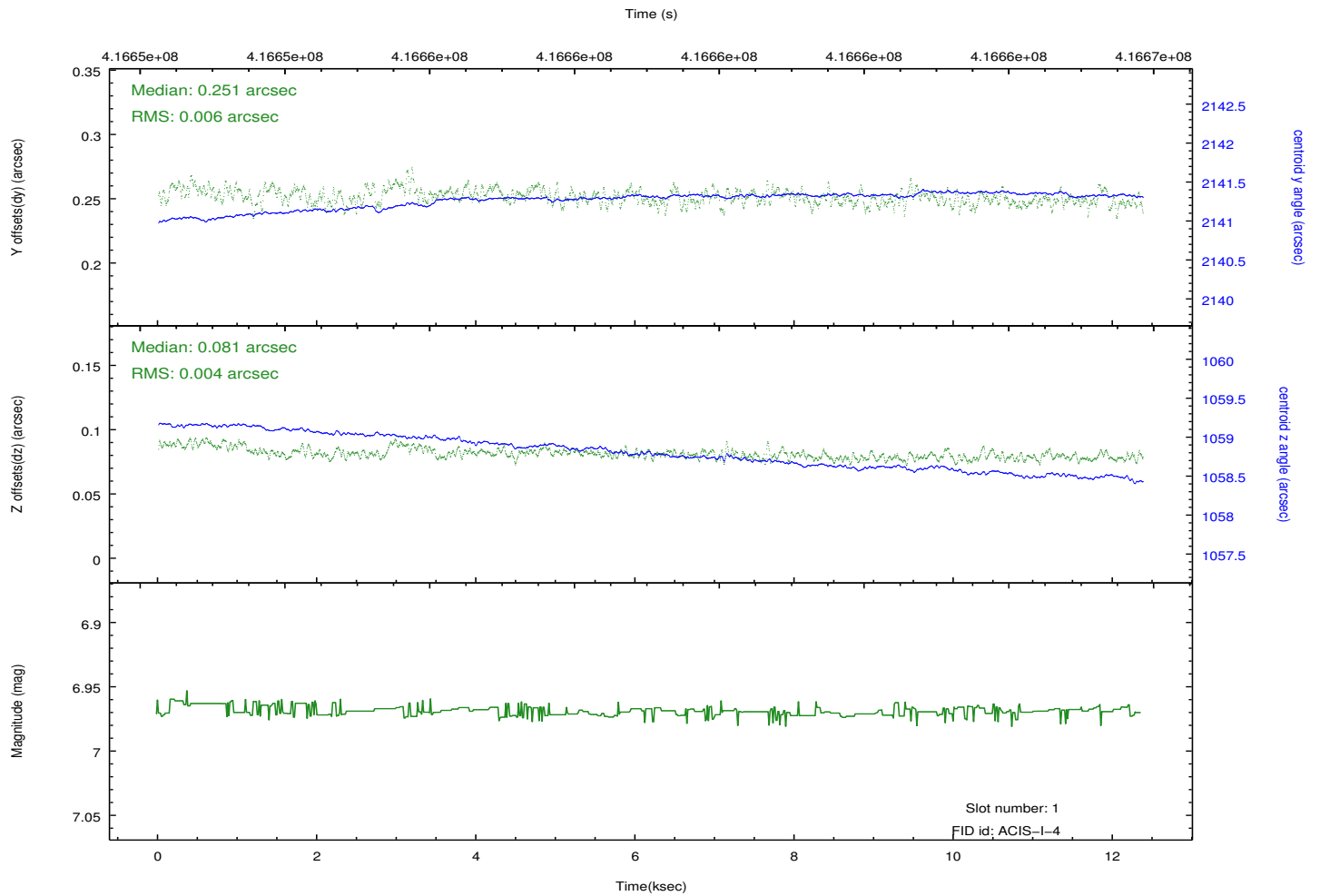
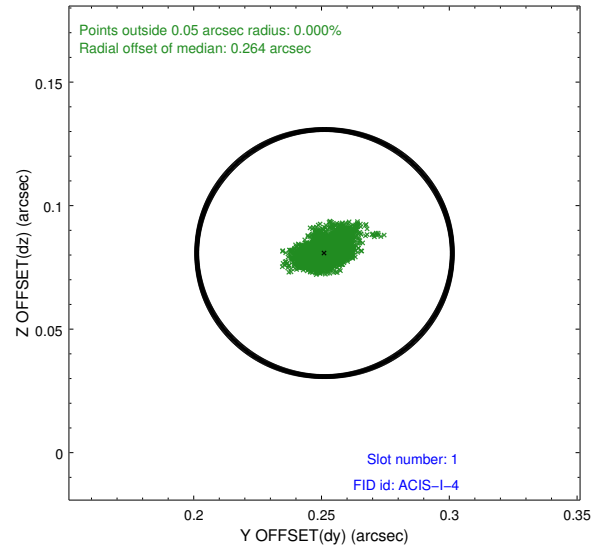
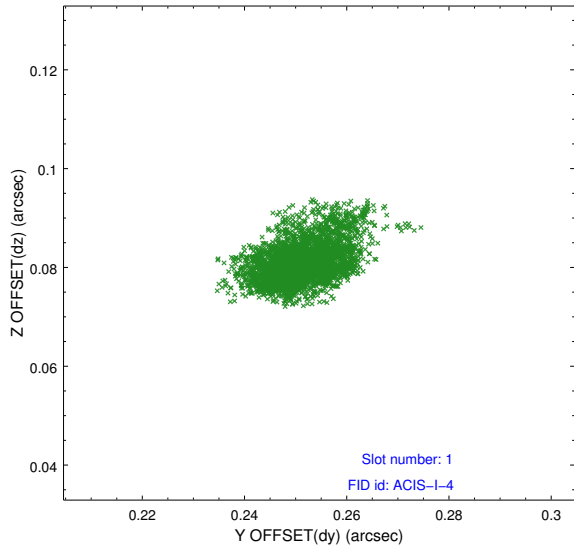


2.5 FID Slots

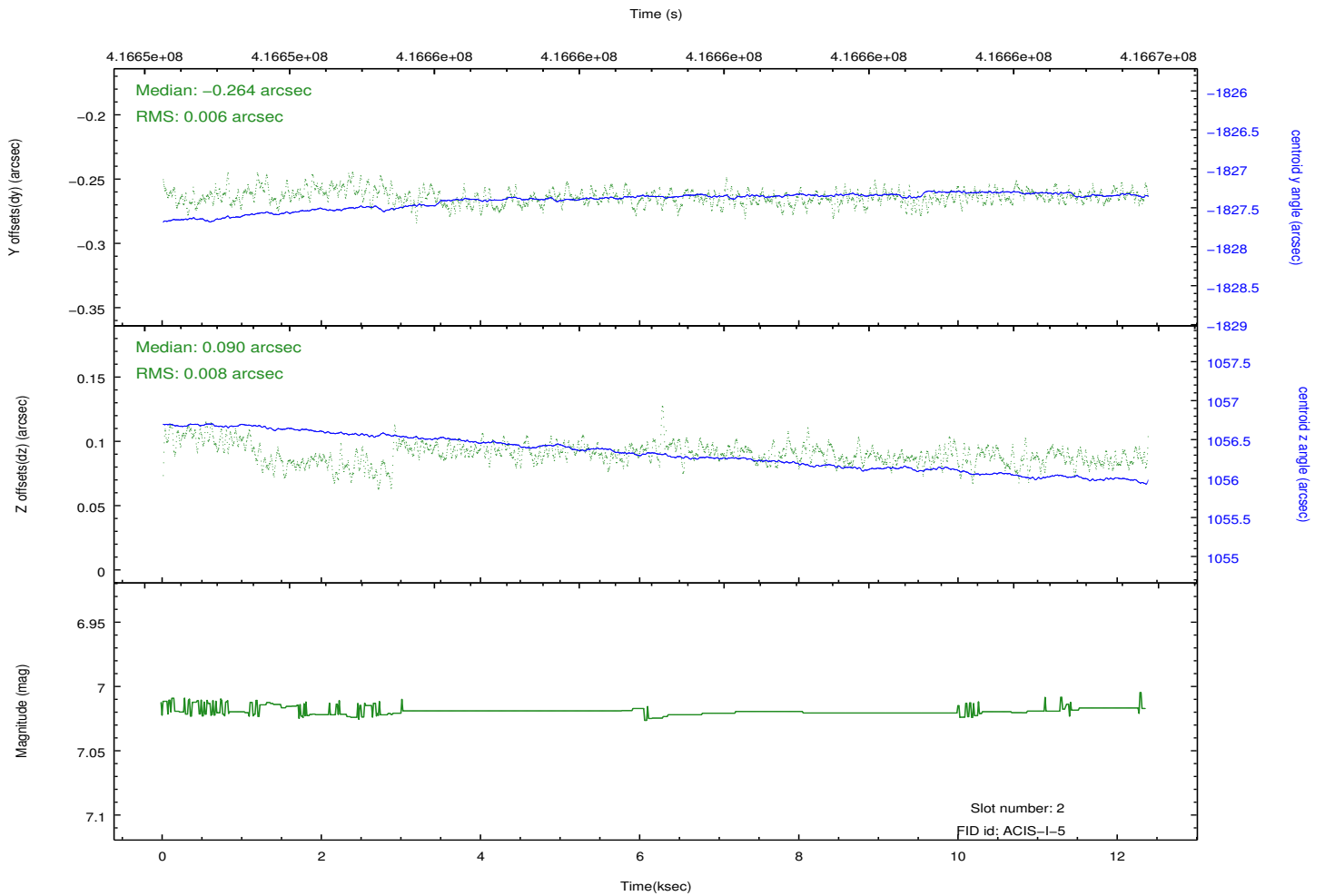
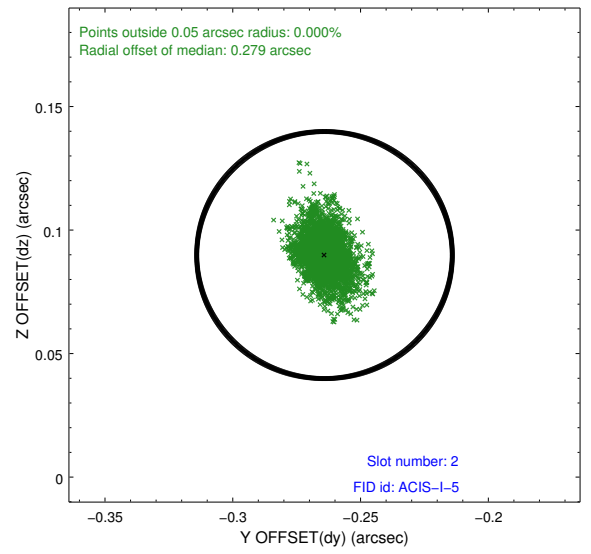
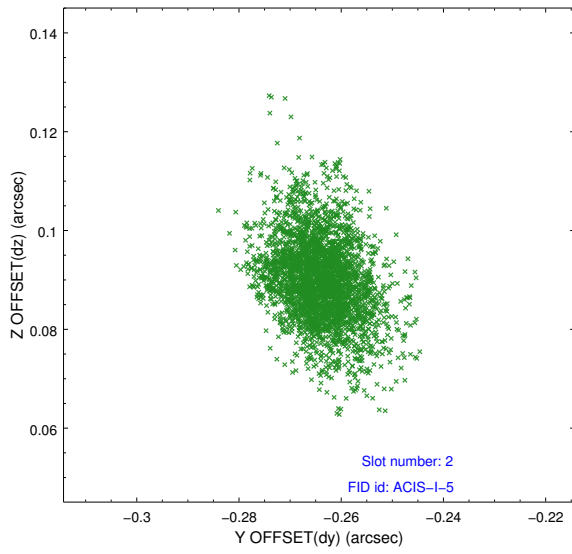
2.5.1 Slot 0



2.5.2 Slot 1



2.5.3 Slot 2



A Summary

A.1 Status

V&V Scientist	Jen Lauer
V&V Date (YYYY-MM-DD)	2012.02.08
V&V Edition	1
V&V Disposition and Status	OK
V&V Charge Time	12.054399955153

A.2 Comments

The data for this observation have been processed using the 'EDSER' sub-pixel event-repositioning algorithm of Li et al. (2004, ApJ, 610, 1204). Small-scale features should become sharper for sources near the aim point. The improvement will be less noticeable for off-axis sources where the size of the point-spread function is comparable to or larger than the size of an ACIS pixel. To take full advantage of the improvement, images should be binned on spatial scales smaller than the size of an ACIS pixel. Note that, at present, the point-spread function has not been calibrated for data to which the EDSEr algorithm has been applied. If dither was disabled for the observation, then the algorithm can introduce artificial aliasing effects on spatial scales smaller than a pixel. If you would prefer to use no sub-pixel adjustment or to apply a coordinate randomization, then use `acis_process_events` to reprocess the data with the parameter `pix_adj=NONE` or `RANDOMIZE`, respectively.

====

Roll preference met.